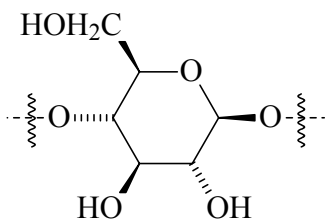
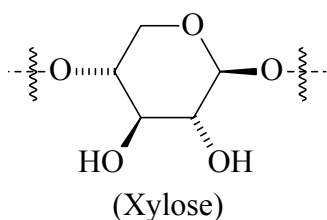
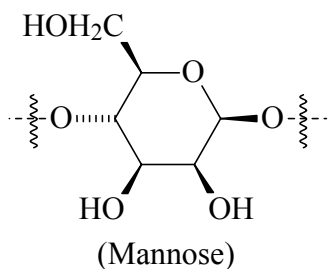


Figure 1: Structures of the monomeric units for the major polymeric constituents of cellulosic plant fibres. Typical monomers are shown for hemicellulose, pectin and lignin.

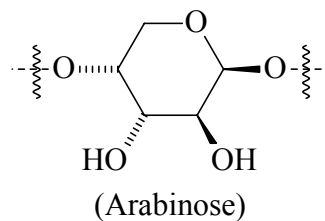
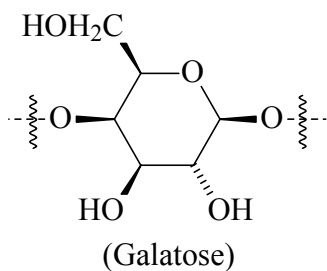
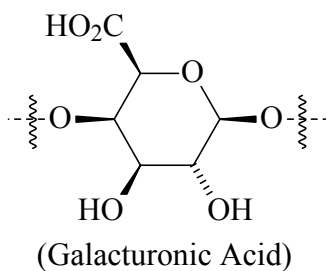
Cellulose:



Hemicellulose:



Pectin:



Lignin:
(Typical Unit)

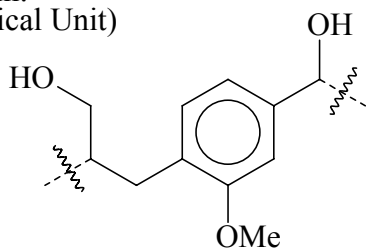


Figure 2: Infrared ATR spectra of the plant fibres recorded over the range 4000 – 750 cm^{-1} .

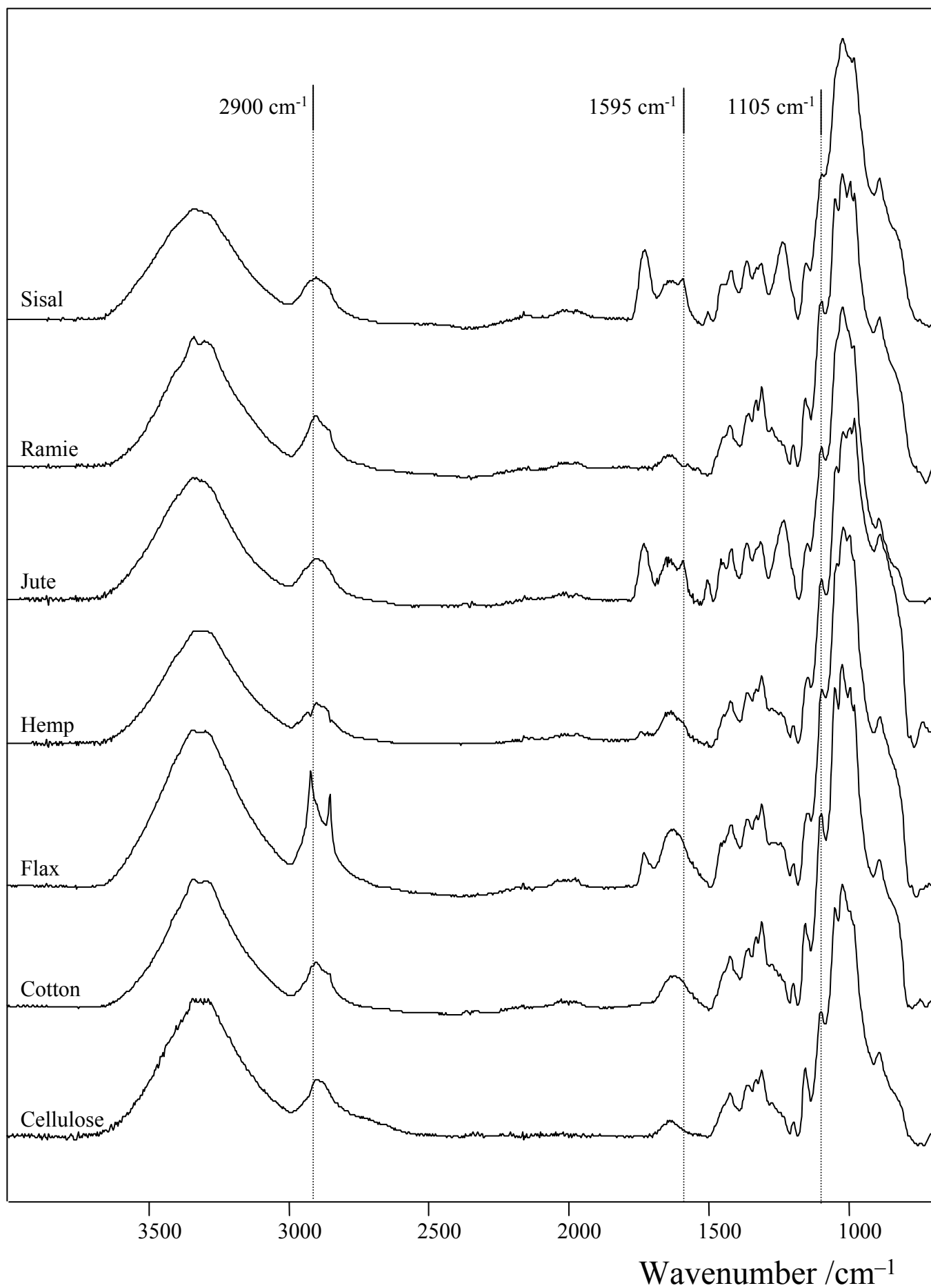


Figure 3: Plots of the intensity ratios, R_1 versus R_2 for (a) native fibres and (b) processed fibres. The envelopes denote the regions into which the combined data for the various species of fibre fall.

