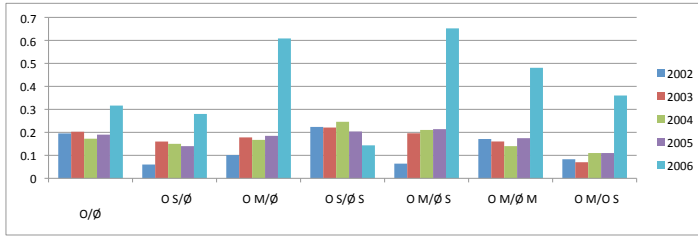
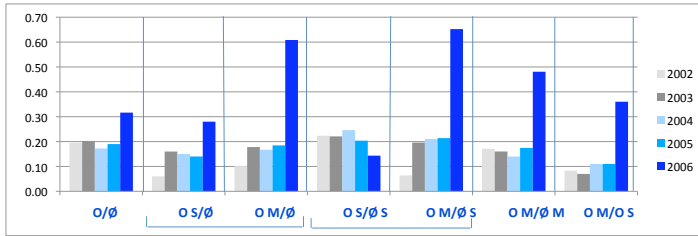


RE-COMPUTING MEANS (FIG 2) TO INCLUDE THE CASES OF ZERO-CITATION NUMERATORS EXCLUDED BY THE LOG RATIO



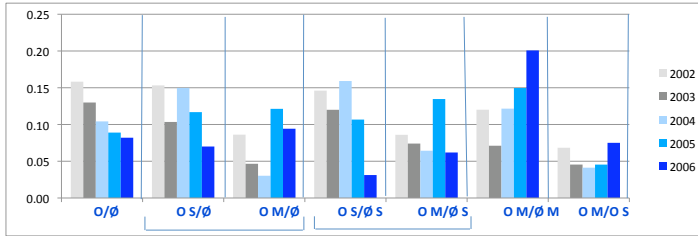
ABOVE: original Figure 2 for mean log raw-citation ratios (grouping slightly re-ordered for better comparison)

BELOW: Figure 2X colors re-coded to make it easier to align 2004-6 in shades of blue with recomputed means as well as with significance tests at end (but note that means are only roughly similar, not identical to the ones in the t-tests)



BELOW: Fig 2XX recomputed for cites + 1 to include in the means the 0-citation articles excluded from log citation ratios

Note that the directions (positive) and magnitudes remain about the same as in Fig 2X. Finer-scale comparisons are not justified because the Ns and samples differ.



BELOW: Tables for Figs 2/2X & 2XX followed by t-test significance levels for paired comparisons for 2004-6 values (only)

Note that the t-tests were done only on 2004-6 (because earlier not all the mandates had been begun) and that the data used were the raw citations, not the log ratios, so the 0-citation cases excluded from the means were not excluded from the significance tests.

RAW CITES	O/Ø	OS/Ø	OM/Ø	OS/ØS	OM/ØS	OM/ØM	OM/ØS
2002	0.20	0.06	0.10	0.22	0.06	0.17	0.08
2003	0.20	0.16	0.18	0.22	0.20	0.16	0.07
2004	0.17	0.15	0.17	0.25	0.21	0.14	0.11
2005	0.19	0.14	0.18	0.20	0.21	0.17	0.11
2006	0.32	0.28	0.61	0.14	0.65	0.48	0.36

CITES + 1	O/Ø	OS/Ø	OM/Ø	OS/ØS	OM/ØS	OM/ØM	OM/ØS
2002	0.16	0.15	0.09	0.15	0.09	0.12	0.07
2003	0.13	0.10	0.05	0.12	0.07	0.07	0.05
2004	0.10	0.15	0.03	0.16	0.06	0.12	0.04
2005	0.09	0.12	0.12	0.11	0.13	0.15	0.05
2006	0.08	0.07	0.09	0.03	0.06	0.20	0.08

Significance for paired t-tests for 2004-6 (identical for all figures because based on raw citation counts, not log ratios)  
 Original order, preceded by mean diffs + p only, re-ordered to match grouping in figures and tables above.

2004-6/p 1.28 p<.000 0.89 p<.003 0.71 p<.014 0.81 p<.007 0.65 p<.025 1.54 p<.026 0.83 p<.048  
 Original order:

		Paired Differences					t	df	Sig. (2-tailed)
		Mean	Std. Deviation	Std. Error Mean	95% Confidence Interval of the Difference				
					Lower	Upper			
Pair 1	O - Ø	1.282	7.402	0.250	0.791	1.772	5.125	875	0.000
Pair 2	OM - OS	0.834	7.898	0.421	0.006	1.662	1.982	351	0.048
Pair 3	OS - ØS	0.809	7.535	0.297	0.225	1.393	2.719	641	0.007
Pair 4	OM - ØM	1.540	9.526	0.684	0.191	2.888	2.251	193	0.026
Pair 5	OM - Ø	0.705	6.871	0.286	0.145	1.266	2.470	578	0.014
Pair 6	OS - Ø	0.890	7.475	0.295	0.312	1.469	3.023	643	0.003
Pair 7	OM - ØS	0.647	6.921	0.289	0.080	1.214	2.242	574	0.025

New order (re-ordered for easier alignment with figures above, though t-tests not strictly applicable to annual means)

		Paired Differences					t	df	Sig. (2-tailed)
		Mean	Std. Deviation	Std. Error Mean	95% Confidence Interval of the Difference				
					Lower	Upper			
Pair 1	O - Ø	1.282	7.402	0.250	0.791	1.772	5.125	875	0.000
Pair 2	OS - Ø	0.890	7.475	0.295	0.312	1.469	3.023	643	0.003
Pair 3	OM - Ø	0.705	6.871	0.286	0.145	1.266	2.470	578	0.014
Pair 4	OS - ØS	0.809	7.535	0.297	0.225	1.393	2.719	641	0.007
Pair 5	OM - ØS	0.647	6.921	0.289	0.080	1.214	2.242	574	0.025
Pair 6	OM - ØM	1.540	9.526	0.684	0.191	2.888	2.251	193	0.026
Pair 7	OM - OS	0.834	7.898	0.421	0.006	1.662	1.982	351	0.048