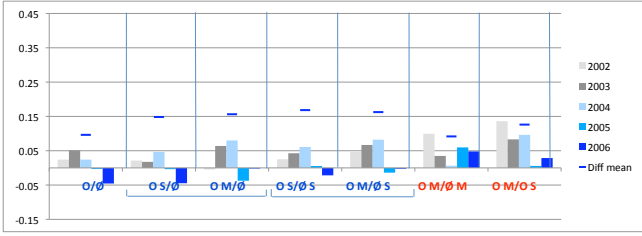
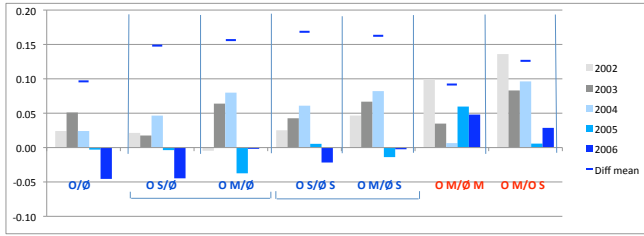


LOG CITATION RATIO MEANS AND PAIRED-SAMPLE T-TESTS FOR CITATION RANGES 0-4 AND 5+

1. Citations between 0 and 4

	O/Ø	O S/Ø	O M/Ø	O S/Ø S	O M/Ø S	O M/Ø M	O M/O S
2002	0.02	0.02	0.00	0.03	0.05	0.10	0.14
2003	0.05	0.02	0.06	0.04	0.07	0.03	0.08
2004	0.02	0.05	0.08	0.06	0.08	0.01	0.10
2005	0.00	0.00	-0.04	0.01	-0.01	0.06	0.01
2006	-0.05	-0.04	0.00	-0.02	0.00	0.05	0.03

--> rescaled to display jointly with mean differences from paired-sample t-tests



Paired Samples Test

		Paired Differences						t	df	Sig. (2-tailed)
		Mean	Std. Deviation	Std. Error Mean	95% Confidence Interval of the Difference					
					Lower	Upper				
Pair 1	O - Ø	0.096	1.133	0.040	0.018	0.175	2.399	796	0.017	
Pair 2	OM - OS	0.126	1.440	0.093	-0.057	0.309	1.360	240	Not Sig 0.175	
Pair 3	OS - ØS	0.168	1.232	0.053	0.065	0.272	3.186	542	0.002	
Pair 4	OM - ØM	0.092	1.420	0.131	-0.168	0.352	0.699	116	Not Sig 0.486	
Pair 5	OM - Ø	0.156	1.159	0.053	0.052	0.260	2.955	479	0.003	
Pair 6	OS - ØS	0.148	1.203	0.051	0.047	0.249	2.886	547	0.004	
Pair 7	OM - ØS	0.163	1.175	0.054	0.057	0.269	3.013	473	0.003	

Note that the OA Advantage is greater for the more citeable articles. (The effect is unlikely to be linear, and uncited articles of course have a special handicap in this sort of comparison. But this breakdown begins to reveal the shape of the OA Advantage.)

Note also that the log citation ratio means are only roughly comparable to the means from corresponding paired-sample t-tests (which apply only to 2004-2006 because not all the mandates were operative earlier than that).

See also the data on frequency of OA and non-OA articles at each citation level.

Our next analysis will also extend 2002-2008.

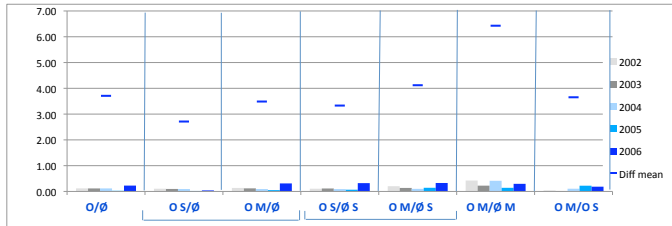
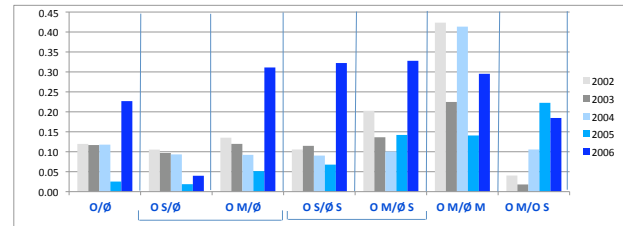
Paired Samples Test

		Paired Differences						t	df	Sig. (2-tailed)
		Mean	Std. Deviation	Std. Error Mean	95% Confidence Interval of the Difference					
					Lower	Upper				
Pair 1	O - Ø	0.096	1.133	0.040	0.018	0.175	2.399	796	0.017	
Pair 2	OS - Ø	0.148	1.203	0.051	0.047	0.249	2.886	547	0.004	
Pair 3	OM - Ø	0.156	1.159	0.053	0.052	0.260	2.955	479	0.003	
Pair 4	OS - ØS	0.168	1.232	0.053	0.065	0.272	3.186	542	0.002	
Pair 5	OM - ØS	0.163	1.175	0.054	0.057	0.269	3.013	473	0.003	
Pair 6	OM - ØM	0.092	1.420	0.131	-0.168	0.352	0.699	116	Not Sig 0.486	
Pair 7	OM - OS	0.126	1.440	0.093	-0.057	0.309	1.360	240	Not Sig 0.175	

2. Citations > 5

	O/Ø	O S/Ø	O M/Ø	O S/Ø S	O M/Ø S	O M/Ø M	O M/O S
2002	0.12	0.11	0.14	0.11	0.20	0.42	0.04
2003	0.12	0.10	0.12	0.11	0.14	0.22	0.02
2004	0.12	0.09	0.09	0.09	0.10	0.41	0.11
2005	0.03	0.02	0.05	0.07	0.14	0.14	0.22
2006	0.23	0.04	0.31	0.32	0.33	0.30	0.18

--> rescaled to display jointly with mean differences from paired-sample t-tests



Paired Samples Test

		Paired Differences						t	df	Sig. (2-tailed)
		Mean	Std. Deviation	Std. Error Mean	95% Confidence Interval of the Difference					
					Lower	Upper				
Pair 1	O - Ø	3.709	20.785	1.041	1.663	5.754	3.564	398	0.000	
Pair 2	OM - OS	3.653	17.923	1.679	0.327	6.978	2.176	113	0.032	
Pair 3	OS - ØS	3.331	16.464	0.965	1.431	5.231	3.451	290	0.001	
Pair 4	OM - ØM	6.428	19.179	2.379	1.676	11.180	2.702	64	0.009	
Pair 5	OM - Ø	3.487	17.559	1.277	0.968	6.007	2.730	188	0.007	
Pair 6	OS - Ø	2.712	16.483	0.945	0.852	4.572	2.869	303	0.004	
Pair 7	OM - ØS	4.120	17.974	1.340	1.476	6.764	3.075	179	0.002	

Paired Samples Test

		Paired Differences						t	df	Sig. (2-tailed)
		Mean	Std. Deviation	Std. Error Mean	Interval of the Difference					
					Lower	Upper				
Pair 1	O - Ø	3.709	20.785	1.041	1.663	5.754	3.564	398	0.000	
Pair 2	OS - Ø	2.712	16.483	0.945	0.852	4.572	2.869	303	0.004	
Pair 3	OM - Ø	3.487	17.559	1.277	0.968	6.007	2.730	188	0.007	
Pair 4	OS - Ø S	3.331	16.464	0.965	1.431	5.231	3.451	290	0.001	
Pair 5	OM - ØS	4.120	17.974	1.340	1.476	6.764	3.075	179	0.002	
Pair 6	OM - ØM	6.428	19.179	2.379	1.676	11.180	2.702	64	0.009	
Pair 7	OM - OS	3.653	17.923	1.679	0.327	6.978	2.176	113	0.032	