

# POLYMATH

## Group Show

24 February – 14 April 2012

Private View Thursday 23 February 2012

GV Art Gallery, 49 Chiltern Street, Marylebone, London W1U 6LY



Susan Aldworth, *Reassembling the Self*, Lithograph, 84 x 55 cm, 2012

*'Study the science of art and the art of science'* - Leonardo da Vinci

*Polymath*: a person of wide-ranging knowledge or learning *Oxford Dictionary*

**Artists:** Susan Aldworth, Andrew Carnie, Annie Cattrell, Katharine Dowson, Rachel Gadsden, David Marron, Dan Peyton, Helen Pynor and Nina Sellars.

GV Art's latest exhibition brings together 'polymath' works that create synergies and connect disparate ideas and different schools of thoughts. From David Marron's *Nervous Tissue* installation, to Susan Aldworth's *Reassembling the Self* lithographs, to Rachel Gadsden, whose *Unlimited Global Alchemy* will be presented as part of the 2012 Cultural Olympiad.

*Reassembling the Self*, a new suite of 14 lithographs by Susan Aldworth made at the Curwen Studio under the guidance of the legendary master printer Stanley Jones, is the culmination of her artist residency at the Institute of Neuroscience at Newcastle University, working on a collaborative project with patients and scientists to piece together some of the narratives that inform the diagnosis and experiences of schizophrenia. Aldworth will show two of these new works for the first time at *Polymath*.

As co-curator Dr Jonathan Hutt observes, 'A polymath doesn't look at what is there but uses existing knowledge to create something new and dynamic'. 'The polymath is almost a discipline in itself', explains David Marron. 'It aids a sensibility in attaining a reasoned level of thought.'

The most famous polymath is, of course, Leonardo da Vinci, who personified the concept of 'Renaissance Humanism' – which held that, to realise their full potential, a human had to acquire the widest spectrum of knowledge – and was the ultimate 'Renaissance Man'. But other polymaths have shaped the evolution of the world throughout history, including Aristotle (384-322BC), Galileo Galilei (1564-1624) and Steve Jobs (1955-2011).

---

The *Notes* panel from David Marron's *Nervous Tissue* featured in *Polymath* and works by Andrew Carnie, Annie Cattrell, Susan Aldworth, Katharine Dowson, Nina Sellars and Helen Pynor are featured in *Brains: The mind as matter* at Wellcome Collection, 29 March-17 June 2012.

#### NOTES FOR EDITORS:

**Curated** by Robert Devcic and Dr Jonathan Hutt

For more information on Rachel Gadsden's *Unlimited Global Alchemy*, see [www.unlimitedglobalalchemy.com/rachel-gadsden](http://www.unlimitedglobalalchemy.com/rachel-gadsden)

In Jan 2011 Gadsden was awarded one of the thirteen commissions in the second round of awards for Unlimited - the ground-breaking programme that celebrates arts and culture by Disabled and Deaf artists on an unprecedented scale for the London 2012 Cultural Olympiad. It is one of three commissions in this round created in collaboration with international partners and with funding contributed by the British Council. Unlimited is principally funded by the Olympic Lottery Distributor and is delivered in partnership between London 2012, Arts Council England, the Scottish Arts Council, Arts Council of Wales, Arts Council of Northern Ireland and the British Council.

<http://festival.london2012.com/events/9000961761>

The rest of Susan Aldworth's lithographic suites will be shown in the exhibition *Reassembling the Self* at the Hatton Gallery and Vane in Newcastle in September 2012. A solo display of Susan Aldworth's multi-image portraits of people with epilepsy will be shown as *The Portrait Anatomised* at the National Portrait Gallery in 2013.

**GV Art** is a contemporary art gallery which aims to explore and acknowledge the inter-relationship between art and science, and how the areas cross over and inform one another. The gallery produces exhibitions and events that create a dialogue focused on how modern man interprets and understands the advances in both areas and how an overlap in the technological and the creative, the medical and the historical are paving the way for new aesthetic sensibilities to develop.

"GV Art is fast becoming a central venue for the meeting of art and science." Philip Ball, *Chemistry World*, October 2011

Contact [media@gvart.co.uk](mailto:media@gvart.co.uk) for images & further information and interviews.

#### **VISITOR INFORMATION**

GV Art, 49 Chiltern Street  
London W1U 6LY  
nearest tube Baker Street  
Tel: 020 8408 9800  
Email: [info@gvart.co.uk](mailto:info@gvart.co.uk)  
Web : [www.gvart.co.uk](http://www.gvart.co.uk)

#### **GALLERY OPENING HOURS**

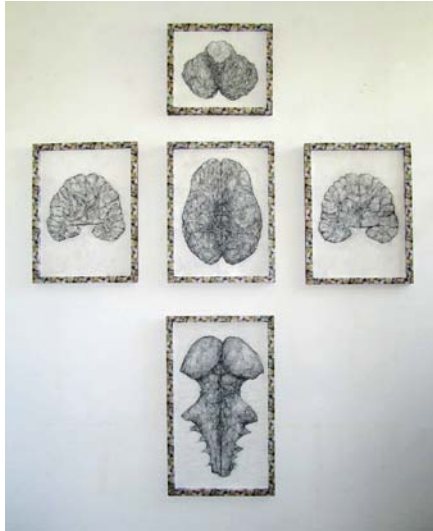
Tuesday to Friday 11am - 6pm,  
Saturdays 11am - 4pm  
or by appointment.  
Admission Free



# POLYMATH

## Images

---



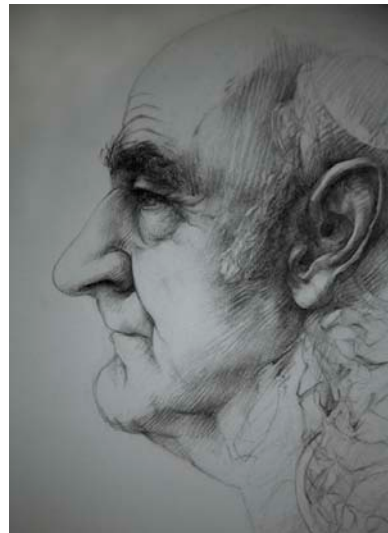
David Marron, *Nervous Tissue*, 2011



Rachel Gadsden, *In their Human Gloves*, 2007



Katharine Dowson, *Nebula (detail)*, 2009



Nina Sellars, *Stelarc portrait Prato*, 2010