



# Prenatal Origins of Temperament: Fetal Growth, Brain Structure, and Inhibitory Control in Adolescence

Wolff Schlotz<sup>1,2,3\*</sup>, Keith M. Godfrey<sup>2,4</sup>, David I. Phillips<sup>2</sup>

**1** Institute of Psychology, University of Regensburg, Regensburg, Germany, **2** MRC Lifecourse Epidemiology Unit, Southampton, United Kingdom, **3** Faculty of Social and Human Sciences, University of Southampton, Southampton, United Kingdom, **4** NIHR Southampton Biomedical Research Centre, University of Southampton and University Hospital Southampton NHS Foundation Trust, Southampton, United Kingdom

## Abstract

**Objective:** Individual differences in the temperamental dimension of effortful control are constitutionally based and have been associated with an adverse prenatal developmental environment, with structural brain alterations presenting a potential mechanism. We investigated this hypothesis for anatomically defined brain regions implicated in cognitive and inhibitory motor control.

**Methods:** Twenty-seven 15–16 year old participants with low, medium, or high fetal growth were selected from a longitudinal birth cohort to maximize variation and represent the full normal spectrum of fetal growth. Outcome measures were parent ratings of attention and inhibitory control, thickness and surface area of the orbitofrontal cortex (lateral (LOFC) and medial (MOFC)) and right inferior frontal gyrus (rIFG), and volumetric measures of the striatum and amygdala.

**Results:** Lower birth weight was associated with lower inhibitory control, smaller surface area of LOFC, MOFC and rIFG, lower caudate volume, and thicker MOFC. A mediation model found a significant indirect effect of birth weight on inhibitory control via caudate volume.

**Conclusions:** Our findings support a neuroanatomical mechanism underlying potential long-term consequences of an adverse fetal developmental environment for behavioral inhibitory control in adolescence and have implications for understanding putative prenatal developmental origins of externalizing behavioral problems and self-control.

**Citation:** Schlotz W, Godfrey KM, Phillips DI (2014) Prenatal Origins of Temperament: Fetal Growth, Brain Structure, and Inhibitory Control in Adolescence. PLoS ONE 9(5): e96715. doi:10.1371/journal.pone.0096715

**Editor:** Cornelis B. Lambalk, VU University Medical Center, Netherlands

**Received:** October 11, 2013; **Accepted:** April 10, 2014; **Published:** May 6, 2014

**Copyright:** © 2014 Schlotz et al. This is an open-access article distributed under the terms of the Creative Commons Attribution License, which permits unrestricted use, distribution, and reproduction in any medium, provided the original author and source are credited.

**Funding:** This work was supported by grants from the Medical Research Council and Wessex Medical Research. Subjects were drawn from a cohort study originally funded by Wellbeing of Women. WS was supported by German Research Foundation (Deutsche Forschungsgemeinschaft) fellowship grant DFG SCHL 1708/1-1. KMG is supported by the National Institute for Health Research through the NIHR Southampton Biomedical Research Centre. The funders had no role in study design, data collection and analysis, decision to publish, or preparation of the manuscript.

**Competing Interests:** The authors have declared that no competing interests exist.

\* E-mail: wolff.schlotz@ur.de

## Introduction

Effortful control (EC) is a temperamental dimension that describes individual differences in self-regulation, or the ability to exert behavioral control, including attentional focusing and inhibitory control [1]. Children and adolescents high in EC are able to inhibit a dominant response or activate a subdominant response, to maintain a sustained focus of attention, and to plan behavior. Individual differences in EC are likely to affect individual adjustment, success, health and well-being later in life. For example, low EC has been shown to be a risk factor for both internalizing and externalizing problems [2,3,4,5,6], might have evocative effects on mother's teaching strategies [7], and influence academic development [8]. Recently, a related but broader construct of self-control in childhood, including lack of control, persistence and attention as well as impulsivity, has been shown to predict adult physical health, substance dependence, personal finances and criminal offending [9]. Because of such broad and substantial potential consequences, investigating the origins of individual differences in EC is of high relevance.

Differences in EC are thought to be constitutionally based, which implies a biological basis. It has been suggested that genetic factors as well as maturation and experience are the primary factors affecting individual differences in EC [1]. Besides these factors, individual differences in behavior and mental health have been associated with an adverse prenatal developmental environment [10,11]. Birth weight across the full normal range is an indicator of prenatal adversity and has been associated with EC and executive functions in children [12,13,14]. In addition, a number of studies demonstrated associations of birth weight with symptoms of attention-deficit/hyperactivity disorder (ADHD) [12,15,16,17,18,19,20]. Because EC and ADHD symptoms are conceptually and empirically related [3,21], we have suggested that EC might mediate the association between prenatal adversity and ADHD symptoms [12].

However, the mechanisms underlying the association between birth weight and EC are unknown. A number of studies recently demonstrated associations between birth weight and global and regional brain morphology across the full normal range of birth weight in broad age samples including children, adolescents and

adults [22,23,24]. Structural changes in brain development might be associated with individual differences in temperamental traits such as EC later in life [12,25]. In this study, we explore if specific alterations in brain structure might present a mechanism for putative fetal origins of EC in adolescence.

It has been suggested that EC is based on the executive attention network, which is involved in resolving conflict between other brain networks and is thought to underlie cognitive and emotional self-regulation [26]. Functional neuroimaging of activation during tasks that require cognitive control or response inhibition suggested that the executive attention network consists of the anterior cingulate cortex (ACC) and prefrontal, particularly orbitofrontal, cortical areas [26,27]. Consistently, effortful control has been shown to be associated with left orbitofrontal cortex (OFC) volume in adolescents [25], and structural deficits in ADHD have repeatedly been observed in OFC and anterior cingulate areas [28].

However, as mentioned above, EC is a heterogeneous construct including lower order facets, particularly attention and inhibitory control. Akin to this heterogeneity it has been suggested that executive attention functions, reflected in anterior cingulate activation, should be distinguished from executive motor control [29], or, similarly, cognitive control from control over overt behavior, e.g. motor inhibition and impulse control [30]. Inhibitory motor control has been shown to implicate prefrontal cortical areas and fronto-striatal circuits, with the right inferior frontal gyrus (rIFG) and striatum, particularly caudate, thought to be important areas for effective response inhibition [31,32,33,34,35]. Support for the relevance of a fronto-striatal pathway in inhibitory motor control comes from observations of activation in the lateral and medial frontal cortex, putamen and caudate during response inhibition tasks [36,37,38,39,40,41]; deficits in volumes of prefrontal cortical and basal ganglia structures in ADHD patients [28,32,42,43]; and correlations of frontal gray matter and caudate volume with physician and parent ratings of ADHD symptoms [44]. In addition, higher ratings on nonplanning, motor and cognitive impulsivity were associated with higher bilateral caudate activity during an inhibitory control task [39] and lower OFC volume [45,46,47]. In support of the notion that prenatal factors might affect the development of this pathway, a recent study has demonstrated shape contraction and smaller volume of the caudate bilaterally in boys with relatively low birth weight born at a short gestational age [48], and birth weight was shown to be correlated with caudate volume in another study [22].

In addition, a number of studies suggested a neural basis for impulse control based on a circuit including ventromedial prefrontal cortex (VMPFC), anterior cingulate cortex (ACC) and amygdala [39,49]. As impulsivity is a construct closely related to (low) inhibitory control, this circuit might also be implicated in long-term effects of prenatal adversity on inhibitory control, and recent data has reported a link between prenatal maternal depression and lower fractional anisotropy and axial diffusivity in the right amygdala of infants at birth (but no association with amygdala volume) [50], as well as associations between maternal cortisol levels in early gestation and child left amygdala volume at 7 years of age [51].

Based on these findings we hypothesized that an adverse prenatal developmental environment might lead to deficits in attention and inhibitory control in adolescence, and that such associations would be based on effects of prenatal adversity on brain development resulting in specific structural changes. The aim of our study was to investigate in a longitudinal birth cohort (1) whether birth weight across the normal spectrum (an indicator of fetal adversity) is associated with attention and inhibitory

control in adolescence, and (2) if structural characteristics of OFC, rIFG, ACC, striatum and amygdala statistically mediate such associations.

## Materials and Methods

### Study design and participants

This is a follow-up study of children of mothers recruited for a longitudinal birth cohort study at 17 or less weeks of gestation at the Princess Anne Maternity Hospital in Southampton, UK [52]. A subgroup of 139 singleton children was recruited for a study when they were 7–9 years old [53,54]. For the follow-up study reported here, families of this subsample were contacted again when the children were approximately 14–15 years old. The local NHS National Research Ethics Service Committee Oxfordshire REC B approved the study and both parent and children gave written informed consent. Participants received a reimbursement of £140 to cover travel costs and their time invested.

Data on birth weight and gestational age were used to generate groups of participants to be recruited for the MRI study with the aim of having the full normal spectrum of fetal growth represented by the sample. In a first step, five participants born before the 37th week of gestation were excluded to prevent any confounding effect of preterm birth. The remaining 134 participants were then allocated to five groups based on sex-specific fetal growth (FG; birth weight adjusted for gestational age) by regressing birth weight on gestational age and using quintiles of the residuals for group allocation separately for males and females. This resulted in equally sized groups of low FG ( $n = 27$ ), low-medium FG ( $n = 27$ ), medium FG ( $n = 27$ ), medium-high FG ( $n = 27$ ) and high FG ( $n = 26$ ). To represent the full normal spectrum of FG and increase power of the hypothesis tests only those 80 participants in the low, medium and high FG groups were included in the study. Of those, addresses of 27 were not traceable; the remaining participants were contacted by telephone and screened for exclusion criteria. Twenty-four participants were excluded because they wore dental braces ( $n = 6$ ), did not want to participate ( $n = 12$ ), reported symptoms of claustrophobia ( $n = 2$ ), had metal implants ( $n = 2$ ) or suffered from epilepsy ( $n = 1$ ), and one participant was surplus to requirements. Thus, 29 adolescents were recruited into the MRI study. After MRI scanning, one participant was excluded due to poor image quality, and one participant had a very small total brain volume at 2.5 SD below the sample mean and therefore was excluded from all brain analyses. Thus, the resulting total sample size was  $n = 27$  ( $n_{\text{lowFG}} = 8$ ;  $n_{\text{mediumFG}} = 12$ ;  $n_{\text{highFG}} = 7$ ). The 27 participants included in the study did not differ from the 53 excluded in terms of age, sex, birth weight, and gestational age (all  $p > .24$ ).

### Measurements

**Data collected at birth.** At birth, the infant's weight was measured using digital scales; the infant's gestational age at birth was calculated from the date of the last menstrual period, confirmed by ultrasound [52].

**Temperamental factors.** Inhibitory control and attention were measured by parent reports on two subscales of the Early Adolescent Temperament Questionnaire – Revised (EATQ-R) [55]. The scale Attention measures the capacity to focus and shift attention when desired (6 items; Cronbach's  $\alpha = .81$ ). Item examples are “Finds it easy to really concentrate on a problem” and “When interrupted or distracted, forgets what s/he was about to say” (reverse scored). The scale Inhibitory Control measures the capacity to plan and to suppress inappropriate responses (5 items; Cronbach's  $\alpha = .58$ ). Item examples are “Has a hard time

waiting his/her turn to speak when excited” (reverse scored), and “Is usually able to stick with his/her plans and goals”. The scores on the two scales in this sample correlated significantly ( $r = .50$ ,  $p = .006$ ).

### MR imaging

Imaging data were acquired at the Oxford Centre for Clinical Magnetic Resonance Research, John Radcliffe Hospital, Oxford, UK, on a 3.0 Tesla TIM Trio scanner (Siemens, Erlangen, Germany). T1-weighted structural images for the structural analysis were acquired using a 3D magnetization prepared rapid gradient echo (MPRAGE) sequence. The voxel resolution was  $1 \times 1 \times 1 \text{ mm}^3$  with an acquisition matrix of  $174 \times 192 \times 192$  and the following parameters: TR = 2040 ms; TE = 4.7 ms; inversion time (TI) = 900 ms; flip angle =  $8^\circ$ . Acquisition duration for this sequence was 5 min and 56 s. The sequence was acquired twice during the same session for each adolescent.

### Image analysis

Cortical reconstruction and volumetric segmentation was performed with the FreeSurfer v5.1.0 imaging analysis suite (<https://surfer.nmr.mgh.harvard.edu>). This process included motion correction and averaging of the two T1-weighted images acquired for each subject, removal of non-brain tissue, and segmentation of white matter and subcortical grey matter volumetric structures [56]. Cortical thickness and surface area were obtained by reconstructing the grey/white matter boundary and the pial surface of the cortex [56]. Cortical thickness was calculated as the closest distance from the grey/white matter boundary to the pial surface at each surface location. Average cerebral cortical thickness and area for regions of interest (ROIs) were based on automated parcellation of the cortex into units based on gyral and sulcal structure using the Desikan-Killiany atlas [57]. Total brain volume was calculated by the volume of all brain labels [56].

Anatomical cortical ROIs were defined as the medial orbitofrontal cortex (MOFC), lateral orbitofrontal cortex (LOFC), ACC (comprising rostral and caudal anterior cingulate) and rIFG (comprising pars opercularis, pars triangularis and pars orbitalis). Exact anatomical boundaries and reliability of the parcellation are described elsewhere [57]. Average cortical thickness (CT) and surface area (SA) of these ROIs were used for hypothesis testing. Volumetric subcortical segmentation was based on validated automated procedures [56]; subcortical ROIs comprised the striatal areas of caudate, putamen and pallidum, and the amygdala. Figure 1 shows the ROIs for this study. Apart from rIFG, we used the total (left + right) CT, SA or volume of the structures, as we had no *a priori* hypotheses on hemisphere specificity. In addition, results of an exploratory whole-brain analysis are shown in the supporting information (for results of surface area analysis see Figure S1 in File S1; for results of cortical thickness analysis see Figures S2 and S3, both in File S1).

### Statistical analysis

The main analysis focused on a potential mediating effect of structural brain characteristics for associations between fetal adversity and behavioral measures of attention and inhibitory control. Indicators of average CT, SA and volume were exported from FreeSurfer into Stata v12.1 (StataCorp, College Station, Texas). We used birth weight as a continuous predictor of brain structure and behaviour in hierarchical least squares multiple linear regression models. Potential mediation effects were tested by estimating path models including indirect effects using Mplus v6.11 (Muthén & Muthén, Los Angeles, California). Tests were

conducted in the following order. First, associations between birth weight and behavioral measures (attention, behavioral inhibition) were tested. Second, associations between fetal adversity and brain structure in adolescence were tested by regressing structural brain characteristics of the ROIs defined above on birth weight. Third, behavioral measures were regressed on those structural brain indicators that showed significant associations with birth weight in the step before. All three association tests should reveal statistically significant associations for a mediating effect to be plausible. Therefore, mediation models were tested only for those behavioral measures and brain structures that fulfilled these criteria. To control for potential sex differences in birth weight and brain structure, all analyses were adjusted for sex. Brain analyses were additionally adjusted for intracranial volume (ICV) by including ICV as a covariate into the regression. To explore potential prenatal and postnatal confounding variables, we also included maternal smoking and drinking alcohol during pregnancy, parity and social class as covariates in additional models. All hypotheses were tested using a significance level of  $p < .05$ .

## Results

Table 1 shows characteristics of the study participants. Gender proportions were similar in the three groups (Fisher's exact test,  $p = .90$ ), and mean age did not significantly differ between the groups ( $F = 0.22$ ,  $p = .80$ ). As intended by design, groups had a similar mean gestational age ( $F = 0.32$ ,  $p = .73$ ), whereas mean birth weight differed between groups (Low v Medium FG:  $t = 2.67$ ,  $p = .016$ ; Low v High FG:  $t = 5.37$ ,  $p < .001$ ; Medium v High FG:  $t = 4.79$ ,  $p < .001$ ). Thus, the total sample represents fetal growth adjusted for gestational age across the full normal spectrum of birth weight.

### Birth weight and behavior

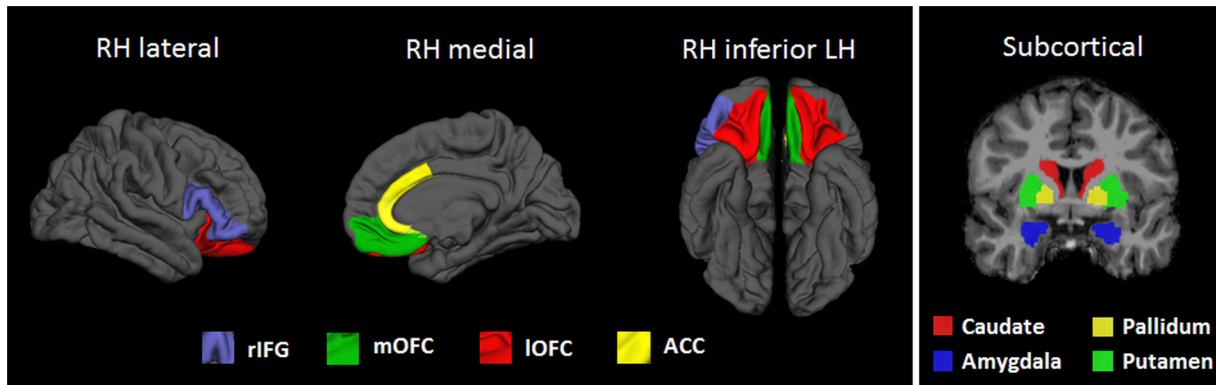
Birth weight significantly predicted inhibitory control ( $\beta = 0.41$ ,  $p = .043$ ,  $\Delta R^2 = .15$ ), but not attention ( $\beta = 0.06$ ,  $p = .76$ ). Thus, consistent with our hypothesis, adolescents born at higher birth weight showed more behavior indicative of higher inhibitory control as reported by their parents, with birth weight explaining 15% of the variance in inhibitory control. In contrast, attention was not significantly related to fetal growth. Adjusting the models for maternal smoking, drinking alcohol, parity and social class did not change the results (supporting information, Table S1 in File S1).

### Birth weight and brain structure

Birth weight was positively associated with total brain volume ( $\beta = 0.33$ ,  $p = .001$ ,  $\Delta R^2 = .10$ ), total gray matter ( $\beta = 0.26$ ,  $p = .023$ ,  $\Delta R^2 = .06$ ) and white matter volume ( $\beta = 0.34$ ,  $p = .022$ ,  $\Delta R^2 = .10$ ).

Table 2 shows the results of regressions of cortical ROIs on birth weight. Whereas adolescents born at a higher birth weight showed larger SA in rIFG and both medial and lateral OFC, no significant associations were observed for ACC. Birth weight was also significantly negatively related to thickness of the medial OFC, explaining between 10 and 22% of variance in cortex morphology. Figure 2 illustrates the statistically significant associations found.

Results of regression analysis testing associations of birth weight with volumes of subcortical ROIs are shown in Table 3. Caudate volume showed a significant positive association, with birth weight explaining 21% of the variance in caudate volume. This effect is illustrated Figure 2. In contrast, volumes of the other investigated subcortical structures were not significantly related to birth weight.



**Figure 1. Cortical and subcortical anatomical target regions of interest (ROIs) for this study.** LH: Left hemisphere; RH: Right hemisphere; rIFG: Right inferior frontal gyrus; LOFC: lateral orbitofrontal cortex; MOFC: medial orbitofrontal cortex; ACC: Anterior cingulate cortex. doi:10.1371/journal.pone.0096715.g001

Adjusting the models for maternal smoking, drinking alcohol, parity and social class did not change the results (supplemental material, Table S1 in File S1).

#### Inhibitory control, birth weight and brain structure

Results so far suggest SA of rIFG, LOFC and MOFC, CT of MOFC, and caudate volume as potential mediators of the relationship between birth weight and inhibitory control. To establish a potential mediational path, we next tested for associations between these structural indices and inhibitory control scores. Regression models showed no significant relationship for any of the cortical structures, all explaining almost no variance in inhibitory control (rIFG SA:  $\beta = 0.06$ ,  $p = .82$ ,  $\Delta R^2 = .00$ ; LOFC SA:  $\beta = 0.09$ ,  $p = .71$ ,  $\Delta R^2 = .01$ ; MOFC SA:  $\beta = 0.05$ ,  $p = .85$ ,  $\Delta R^2 = .00$ ; MOFC CT:  $\beta = -0.03$ ,  $p = .89$ ,  $\Delta R^2 = .00$ ). In contrast, caudate volume was significantly and positively associated with inhibitory control, explaining 20% of variance ( $\beta = 0.53$ ,  $p = .015$ ,  $\Delta R^2 = .20$ ), thus qualifying as a potential mediator of the relationship between birth weight and inhibitory control.

A formal mediation test using path analysis tested the indirect effect of birth weight on inhibitory control via caudate volume (Figure 3). Confirming results presented above, paths from birth weight to caudate and from caudate to inhibitory control were highly significant, and the initially significant association between birth weight and inhibitory control became non-significant when caudate volume was entered in the model. The model confirmed

that the indirect pathway effect from birth weight to inhibitory control via caudate volume was significant (indirect  $\beta = 0.29$ ;  $p = .025$ ).

#### Discussion

The results of our study suggest that an adverse fetal developmental environment, indicated by fetal growth across the full normal spectrum, may affect inhibitory control in adolescence, and that this effect may be mediated through subtle changes in subcortical brain structures involved in executive motor control.

Of the two facets of effortful control studied here, only inhibitory control and not attention was associated with birth weight. Whether this is due to methodological factors (e.g. limited statistical power; parent report rating scales as opposed to self-report ratings or cognitive tests; differences in measurement reliability), or reflects specificity in long-term consequences of fetal adversity in adolescence is not clear. For inhibitory control we were able to detect a significant indirect effect of birth weight via caudate volume, suggesting that fetal adversity might be linked to behavior in adolescence via alterations in brain development.

We found that birth weight was positively associated with total brain, gray and white matter volume, as well as cortical surface area in both LOFC and MOFC, and in rIFG. With regards to subcortical structures, birth weight was positively associated with caudate volume, but not with other striatal areas or the amygdala.

**Table 1. Characteristics of the sample as represented by three groups of fetal growth.**

	Low FG group (n = 8)	Medium FG group (n = 12)	High FG group (n = 7)
Age (years) <sup>a</sup>	16.0 (0.36)	15.9 (0.41)	16.0 (0.34)
Age range (years)	15.4–16–6	15.1–16.4	15.5–16.4
Female <sup>b</sup>	3 (37%)	6 (50%)	4 (50%)
Birth weight (kg) <sup>a</sup>	3.2 (0.49)	3.5 (0.28)	4.1 (0.26)
Birth weight range (kg)	2.4–3.6	3.1–4.2	3.7–4.5
Gestational age (weeks) <sup>a</sup>	40.3 (1.56)	39.8 (1.36)	40.1 (1.56)
Gestational age range (weeks)	37.9–42.3	38.1–43.3	38.1–41.7

Note that the only statistically significant differences between groups was in birth weight (see text for details).

<sup>a</sup>M (SD);

<sup>b</sup>n (%); FG: Fetal growth.

doi:10.1371/journal.pone.0096715.t001

**Table 2.** Associations of birth weight with bilateral structural measures of cortical regions of interest.

	Surface area			Cortical thickness		
	$\beta$	p	$\Delta R^2$	$\beta$	p	$\Delta R^2$
LOFC	<b>0.45</b>	<b>.010</b>	<b>.17</b>	-0.24	.24	.05
MOFC	<b>0.35</b>	<b>.029</b>	<b>.11</b>	<b>-0.51</b>	<b>.016</b>	<b>.22</b>
rIFG	<b>0.35</b>	<b>.035</b>	<b>.10</b>	-0.02	.93	.00
ACC	0.24	.20	.05	-0.06	.79	.00

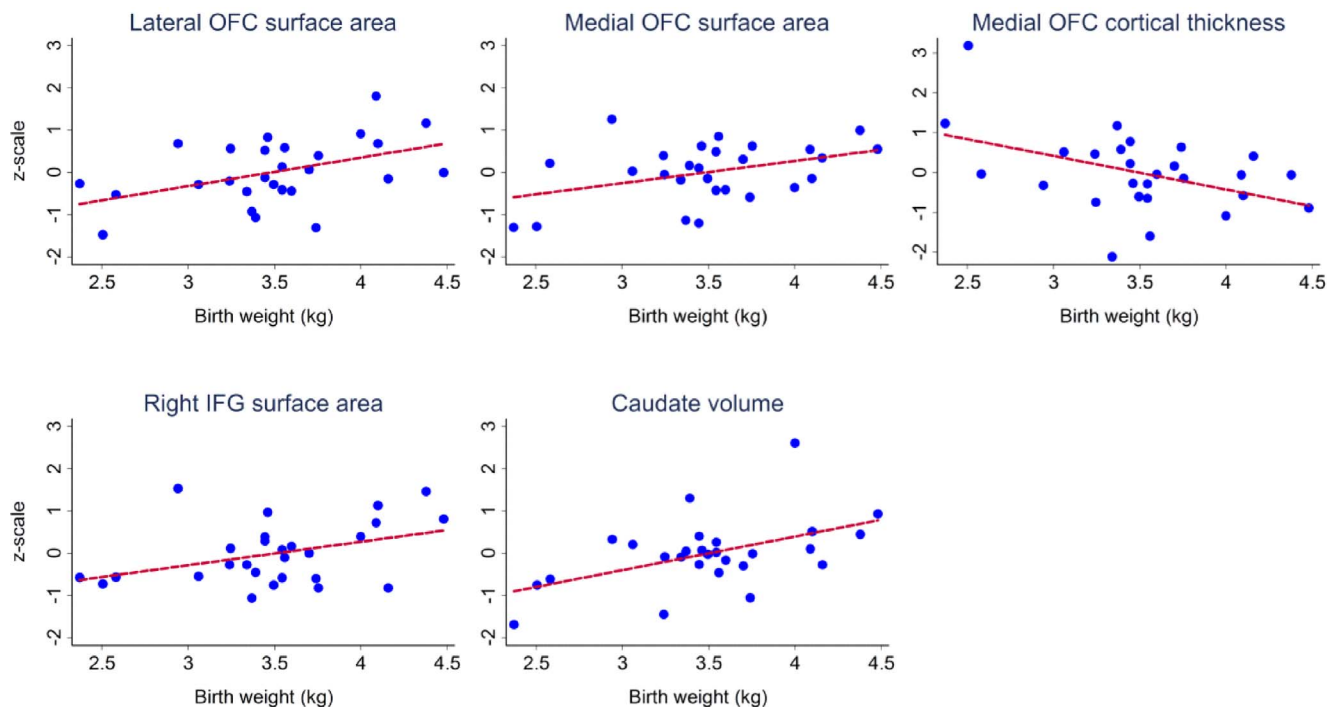
Note. Adjusted for sex and intracranial volume. LOFC: lateral orbitofrontal cortex; MOFC: medial orbitofrontal cortex; rIFG: Right inferior frontal gyrus; ACC: Anterior cingulate cortex.

doi:10.1371/journal.pone.0096715.t002

These findings are largely consistent with recent studies in larger samples that found birth weight effects for surface areas similar to our frontal cortical ROIs [22,23,24] as well as caudate volume [22,48]. Associations in our study reflect relatively large effects with 10–22% of variance in brain structure explained by birth weight. In comparison, Walhovd and colleagues [22] reported effects that explained 3% of variance in total brain volume and 4% in caudate volume. A number of study design factors are possible reasons for the larger effects found in our study. First, we residualized birth weight for gestational age and our results therefore more accurately reflect effects of fetal growth. Second, we selected participants from three groups representing the full spectrum of fetal growth; including the extreme groups might have increased statistical power in our study. Finally, we used data from a longitudinal birth cohort with birth weight recordings done at birth by nurses using digital scales, as opposed to birth weights being recalled by parents or participants at the time of the neuroimaging session, thus reducing unsystematic variance due to recall bias. Nevertheless, our study still had limited statistical

power due to the relatively small sample, which might explain some of our negative findings.

In contrast to cortical surface area, a significant association with cortical thickness was found only for the MOFC. Adolescents with lower fetal growth had a thicker MOFC averaged across hemispheres. This finding is consistent with earlier studies of samples covering childhood to young adult age groups showing that cortical thickness was not or only very weakly associated with indicators of fetal growth in both monozygotic and dizygotic twins [23], in a larger sample of adolescents [22], and in both schizophrenia patients and healthy controls [24]. In children and adolescents born small-for-gestational age, thickening of frontal cortical areas was found, although the effects were rather small [58,59]. As brain development is characterized by progressive cortical thinning during adolescence [60] these results might indicate a maturational delay of orbitofrontal cortex in adolescents with low fetal growth. Alternatively, the weak associations found here might be due to opposing effects of fetal growth and overall brain size on cortical thickness. However, we also found birth



**Figure 2.** Scatter plots showing statistically significant associations between birth weight and neuroanatomical variables residualized for sex and intracranial volume.

doi:10.1371/journal.pone.0096715.g002

**Table 3.** Associations of birth weight with volume of subcortical gray matter regions of interest.

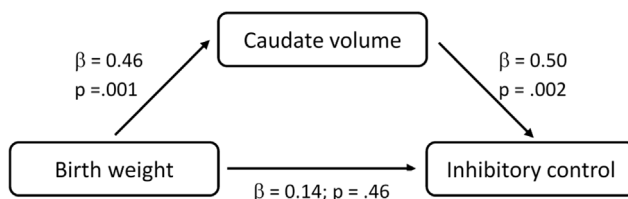
	$\beta$	p	$\Delta R^2$
Amygdala	0.03	.90	.00
Caudate	<b>0.50</b>	<b>.005</b>	<b>.21</b>
Putamen	-0.01	.95	.00
Pallidum	0.11	.55	.01

Note. Adjusted for sex and intracranial volume.

doi:10.1371/journal.pone.0096715.t003

weight to be more strongly, and positively, associated with white matter volume than gray matter volume. Although speculative, together with our cortical thickness finding this could indicate a less extensive architecture of white matter tracts in adolescents with low fetal growth, suggesting that future studies examining connectivity of gray and white matter areas using Diffusion Tensor Imaging might reveal important additional information on potential effects of fetal adversity on brain structure in adolescence.

It has been suggested that the striatum is particularly vulnerable to perinatal hypoxic-ischemic events [61] and intraventricular hemorrhage [33], leading to reduced cognitive and behavioral control in affected individuals. In addition, experimental animal studies have shown that an adverse intrauterine environment due to hypoxic-ischemic injury and inflammatory insults can lead to neuronal death, white matter damage, and reduced brain growth [62,63]. In guinea pigs, reduced uteroplacental blood flow has been shown to lead to reduced brain weight and reduced basal ganglia volume lasting into adolescence [64]. Therefore, long-term consequences of fetal adversity are possible and the behavioral consequences suggested by our results are plausible. However, what remains unclear is to what extent our findings represent maturational delay or impairment of normal brain development. Also, our study does not allow any causal conclusions, as alternative explanations cannot be ruled out. It is well known that genetic and postnatal environmental factors contribute to brain development [65,66]. As effects of birth weight on brain structure were demonstrated within monozygotic twin pairs [23], genetic effects seem to be an unlikely alternative explanation. Including maternal smoking and drinking alcohol, parity and social class in our models did not change any of the associations observed. However, continuation of adversity in postnatal life and residual confounding variables could not be controlled in more detail in our study.



**Figure 3. Mediation analysis for the effect of birth weight on inhibitory control via caudate volume.** Model adjusted for sex and intracranial volume. Coefficients shown are standardized regression coefficients. The total indirect effect of birth weight on inhibitory control was statistically significant at  $p = .025$ . Omitting caudate volume from the analysis, birth weight was associated with inhibitory control,  $\beta = 0.41$ ,  $p = .043$ .

doi:10.1371/journal.pone.0096715.g003

The finding of a positive association between caudate volume and inhibitory control in daily life is consistent with neuroscience models that postulate a major involvement of striatal areas in inhibitory motor control [33,34,41,67,68] and findings of reduced caudate volume in ADHD [69]. However, contrary to our expectations, none of the other brain structures investigated were associated with inhibitory control. This could be due to limited reliability of the behavioral scale, limited statistical power, or it might indicate structural differences that do not translate into function. Using fMRI with an inhibitory control task could provide some clarification of this question, which might be highly relevant as the neural mechanisms of stopping have an effect on the broader construct of self-control [67], which itself is associated with behavioral problems, adjustment, and health and wealth later in life [2,9].

The main limitations of our study were the relatively low internal consistency of the Inhibitory Control scale and limited statistical power due to a relatively small sample. The internal consistency of a scale is dependent on the number of items and the observed scale score variance. For a short scale of five items and a relatively homogenous and small sample the internal consistency observed in this study can be considered acceptable for a group study. Nevertheless, both limitations mean that some relevant associations might have been missed.

In summary, this study demonstrated that an adverse fetal developmental environment might lead to reduced inhibitory control in adolescence, and that reduced caudate volume might mediate this association. As inhibitory control is an integral part of self-control, identifying such pathways originating in prenatal life might in the future help to improve well-being through targeted early preventative action such as educational or nutritional intervention [70,71,72]. However, the exact mechanisms by which prenatal factors might affect behavior and well-being later in life first need to be defined more clearly. Concerning brain development, future studies need to investigate additional effects of fetal adversity such as alterations of neural connectivity and differential functional activation of potentially relevant areas.

## Supporting Information

**File S1 Combined supporting information, containing results of vertex-wise analyses (Figures S1, S2, and S3) and results of adjustment for potentially confounding covariates (Table S1).**

(DOCX)

## Acknowledgments

We acknowledge generous assistance from Professor Irene Tracey and the Oxford Centre for Clinical Magnetic Resonance Research, John Radcliffe Hospital, Oxford, UK.

## Author Contributions

Conceived and designed the experiments: WS KMG DIP. Performed the experiments: WS. Analyzed the data: WS. Wrote the paper: WS KMG DIP.

## References

- Rothbart MK, Bates JE (2006) Temperament. In: Damon W, Lerner R, Eisenberg N, editors. *Handbook of child psychology*. 6th ed. New York: Wiley. pp. 99–166.
- Eisenberg N, Spinrad TL, Fabes RA, Reiser M, Cumberland A, et al. (2004) The relations of effortful control and impulsivity to children's resiliency and adjustment. *Child Dev* 75: 25–46.
- Nigg JT (2006) Temperament and developmental psychopathology. *J Child Psychol Psychiatry* 47: 395–422.
- Olson SL, Sameroff AJ, Kerr DC, Lopez NL, Wellman HM (2005) Developmental foundations of externalizing problems in young children: the role of effortful control. *Dev Psychopathol* 17: 25–45.
- Lengua LJ, Bush NR, Long AC, Kovacs EA, Trancik AM (2008) Effortful control as a moderator of the relation between contextual risk factors and growth in adjustment problems. *Dev Psychopathol* 20: 509–528.
- Ormel J, Oldehinkel AJ, Ferdinand RF, Hartman CA, De Winter AF, et al. (2005) Internalizing and externalizing problems in adolescence: general and dimension-specific effects of familial loadings and preadolescent temperament traits. *Psychol Med* 35: 1825–1835.
- Eisenberg N, Vidmar M, Spinrad TL, Eggum ND, Edwards A, et al. (2010) Mothers' teaching strategies and children's effortful control: A longitudinal study. *Dev Psychol* 46: 1294–1308.
- Blair C, Razza RP (2007) Relating effortful control, executive function, and false belief understanding to emerging math and literacy ability in kindergarten. *Child Dev* 78: 647–663.
- Moffitt TE, Arseneault L, Belsky D, Dickson N, Hancox RJ, et al. (2011) A gradient of childhood self-control predicts health, wealth, and public safety. *Proc Natl Acad Sci U S A* 108: 2693–2698.
- Schlotz W, Phillips DI (2009) Fetal origins of mental health: Evidence and mechanisms. *Brain Behav Immun* 23: 905–916.
- Räikkönen K, Pesonen A-K, Roseboom TJ, Eriksson JG (2012) Early determinants of mental health. *Best Practice & Research Clinical Endocrinology & Metabolism* 26: 599–611.
- Schlotz W, Jones A, Godfrey KM, Phillips DI (2008) Effortful control mediates associations of fetal growth with hyperactivity and behavioural problems in 7- to 9-year-old children. *J Child Psychol Psychiatry* 49: 1228–1236.
- Phua DY, Rifkin-Graboi A, Saw SM, Meaney MJ, Qiu A (2012) Executive functions of six-year-old boys with normal birth weight and gestational age. *PLoS ONE* 7: e36502.
- Li-Grining CP (2007) Effortful control among low-income preschoolers in three cities: Stability, change, and individual differences. *Dev Psychol* 43: 208–221.
- Lahti J, Raikonen K, Kajantie E, Heinonen K, Pesonen AK, et al. (2006) Small body size at birth and behavioural symptoms of ADHD in children aged five to six years. *J Child Psychol Psychiatry* 47: 1167–1174.
- Heinonen K, Raikonen K, Pesonen AK, Andersson S, Kajantie E, et al. (2010) Behavioural symptoms of attention deficit/hyperactivity disorder in preterm and term children born small and appropriate for gestational age: a longitudinal study. *BMC Pediatr* 10: 91.
- Hultman CM, Torrang A, Tuvtblad C, Cnattingius S, Larsson JO, et al. (2007) Birth Weight and Attention-Deficit/Hyperactivity Symptoms in Childhood and Early Adolescence: A Prospective Swedish Twin Study. *J Am Acad Child Adolesc Psychiatry* 46: 370–377.
- Linnet KM, Wisborg K, Agerbo E, Secher NJ, Thomsen PH, et al. (2006) Gestational age, birth weight, and the risk of hyperkinetic disorder. *Arch Dis Child* 91: 655–660.
- Wiles NJ, Peters TJ, Heron J, Gunnell D, Emond A, et al. (2006) Fetal growth and childhood behavioral problems: results from the ALSPAC cohort. *Am J Epidemiol* 163: 829–837.
- Halmoy A, Klungsoyr K, Skjaerven R, Haavik J (2012) Pre- and perinatal risk factors in adults with attention-deficit/hyperactivity disorder. *Biol Psychiatry* 71: 474–481.
- Martel MM, Gremillion ML, Roberts B (2012) Temperament and Common Disruptive Behavior Problems in Preschool. *Pers Ind Diff* 53: 874–879.
- Walhovd KB, Fjell AM, Brown TT, Kuperman JM, Chung Y, et al. (2012) Long-term influence of normal variation in neonatal characteristics on human brain development. *Proc Natl Acad Sci U S A* 109: 20089–20094.
- Raznahan A, Greenstein D, Lee NR, Clasen LS, Giedd JN (2012) Prenatal growth in humans and postnatal brain maturation into late adolescence. *Proc Natl Acad Sci U S A* 109: 11366–11371.
- Haukvik UK, Rimol LM, Roddey JC, Hartberg CB, Lange EH, et al. (2014) Normal Birth Weight Variation Is Related to Cortical Morphology Across the Psychosis Spectrum. *Schizophr Bull* 40: 410–419.
- Whittle S, Yucel M, Fornito A, Barrett A, Wood SJ, et al. (2008) Neuroanatomical correlates of temperament in early adolescents. *J Am Acad Child Adolesc Psychiatry* 47: 682–693.
- Rothbart MK, Sheese BE, Posner MI (2007) Executive Attention and Effortful Control: Linking Temperament, Brain Networks, and Genes. *Child Dev Perspect* 1: 2–7.
- Horn NR, Dolan M, Elliott R, Deakin JF, Woodruff PW (2003) Response inhibition and impulsivity: an fMRI study. *Neuropsychologia* 41: 1959–1966.
- Cubillo A, Halari R, Smith A, Taylor E, Rubia K (2012) A review of fronto-striatal and fronto-cortical brain abnormalities in children and adults with Attention Deficit Hyperactivity Disorder (ADHD) and new evidence for dysfunction in adults with ADHD during motivation and attention. *Cortex* 48: 194–215.
- Nigg JT (2000) On inhibition/disinhibition in developmental psychopathology: views from cognitive and personality psychology and a working inhibition taxonomy. *Psychol Bull* 126: 220–246.
- Aron AR (2007) The neural basis of inhibition in cognitive control. *Neuroscientist* 13: 214–228.
- Jahfari S, Waldorp L, van den Wildenberg WP, Scholte HS, Ridderinkhof KR, et al. (2011) Effective connectivity reveals important roles for both the hyperdirect (fronto-subthalamic) and the indirect (fronto-striatal-pallidal) fronto-basal ganglia pathways during response inhibition. *J Neurosci* 31: 6891–6899.
- Chambers CD, Garavan H, Bellgrove MA (2009) Insights into the neural basis of response inhibition from cognitive and clinical neuroscience. *Neurosci Biobehav Rev* 33: 631–646.
- Casey BJ, Tottenham N, Fossella J (2002) Clinical, imaging, lesion, and genetic approaches toward a model of cognitive control. *Dev Psychobiol* 40: 237–254.
- Wiecki TV, Frank MJ (2013) A computational model of inhibitory control in frontal cortex and basal ganglia. *Psychol Rev* 120: 329–355.
- Aron AR, Behrens TE, Smith S, Frank MJ, Poldrack RA (2007) Triangulating a cognitive control network using diffusion-weighted magnetic resonance imaging (MRI) and functional MRI. *J Neurosci* 27: 3743–3752.
- Casey BJ, Castellanos FX, Giedd JN, Marsh WL, Hamburger SD, et al. (1997) Implication of right frontostriatal circuitry in response inhibition and attention-deficit/hyperactivity disorder. *J Am Acad Child Adolesc Psychiatry* 36: 374–383.
- Chikazoe J, Jimura K, Asari T, Yamashita K, Morimoto H, et al. (2009) Functional dissociation in right inferior frontal cortex during performance of go/no-go task. *Cereb Cortex* 19: 146–152.
- Durston S, Thomas KM, Yang Y, Uluğ AM, Zimmerman RD, et al. (2002) A neural basis for the development of inhibitory control. *Developmental Science* 5: F9–F16.
- Brown SM, Manuck SB, Flory JD, Hariri AR (2006) Neural basis of individual differences in impulsivity: contributions of corticolimbic circuits for behavioral arousal and control. *Emotion* 6: 239–245.
- Rubia K, Smith AB, Brammer MJ, Taylor E (2003) Right inferior prefrontal cortex mediates response inhibition while mesial prefrontal cortex is responsible for error detection. *Neuroimage* 20: 351–358.
- Li CS, Yan P, Sinha R, Lee TW (2008) Subcortical processes of motor response inhibition during a stop signal task. *Neuroimage* 41: 1352–1363.
- Durston S, Hulshoff Pol HE, Schnack HG, Buitelaar JK, Steenhuis MP, et al. (2004) Magnetic resonance imaging of boys with attention-deficit/hyperactivity disorder and their unaffected siblings. *J Am Acad Child Adolesc Psychiatry* 43: 332–340.
- Sowell ER, Thompson PM, Welcome SE, Henkenius AL, Toga AW, et al. (2003) Cortical abnormalities in children and adolescents with attention-deficit hyperactivity disorder. *Lancet* 362: 1699–1707.
- Castellanos FX, Lee PP, Sharp W, Jeffries NO, Greenstein DK, et al. (2002) Developmental trajectories of brain volume abnormalities in children and adolescents with attention-deficit/hyperactivity disorder. *JAMA* 288: 1740–1748.
- Matsuo K, Nicoletti M, Nemoto K, Hatch JP, Peluso MA, et al. (2009) A voxel-based morphometry study of frontal gray matter correlates of impulsivity. *Hum Brain Mapp* 30: 1188–1195.
- Schilling C, Kuhn S, Romanowski A, Banaschewski T, Barbot A, et al. (2013) Common structural correlates of trait impulsiveness and perceptual reasoning in adolescence. *Hum Brain Mapp* 34: 374–383.
- Boes AD, Bechara A, Tranel D, Anderson SW, Richman L, et al. (2009) Right ventromedial prefrontal cortex: a neuroanatomical correlate of impulse control in boys. *Social Cognitive and Affective Neuroscience* 4: 1–9.
- Qiu A, Rifkin-Graboi A, Zhong J, Phua DY, Lai YK, et al. (2012) Birth weight and gestation influence striatal morphology and motor response in normal six-year-old boys. *Neuroimage* 59: 1065–1070.
- Bechara A (2005) Decision making, impulse control and loss of willpower to resist drugs: a neurocognitive perspective. *Nat Neurosci* 8: 1458–1463.

50. Rifkin-Graboi A, Bai J, Chen H, Hameed WB, Sim LW, et al. (2013) Prenatal maternal depression associates with microstructure of right amygdala in neonates at birth. *Biol Psychiatry* 74: 837–844.
51. Buss C, Davis EP, Shahbaba B, Pruessner JC, Head K, et al. (2012) Maternal cortisol over the course of pregnancy and subsequent child amygdala and hippocampus volumes and affective problems. *Proc Natl Acad Sci U S A* 109: E1312–E1319.
52. Godfrey K, Walker-Bone K, Robinson S, Taylor P, Shore S, et al. (2001) Neonatal bone mass: influence of parental birthweight, maternal smoking, body composition, and activity during pregnancy. *J Bone Miner Res* 16: 1694–1703.
53. Jones A, Godfrey KM, Wood P, Osmond C, Goulden P, et al. (2006) Fetal growth and the adrenocortical response to psychological stress. *J Clin Endocrinol Metab* 91: 1868–1871.
54. Schlotz W, Jones A, Phillips NM, Godfrey KM, Phillips DI (2007) Size at birth and motor activity during stress in children aged 7 to 9 years. *Pediatrics* 120: e1237–e1244.
55. Ellis LK, Rothbart MK (2001) Revision of the Early Adolescent Temperament Questionnaire. Biennial Meeting of the Society for Research in Child Development. Minneapolis, Minnesota.
56. Fischl B, Salat DH, Busa E, Albert M, Dieterich M, et al. (2002) Whole brain segmentation: automated labeling of neuroanatomical structures in the human brain. *Neuron* 33: 341–355.
57. Desikan RS, Segonne F, Fischl B, Quinn BT, Dickerson BC, et al. (2006) An automated labeling system for subdividing the human cerebral cortex on MRI scans into gyral based regions of interest. *Neuroimage* 31: 968–980.
58. De Bie HM, Ostrom KJ, Boersma M, Veltman DJ, Barkhof F, et al. (2011) Global and regional differences in brain anatomy of young children born small for gestational age. *PLoS ONE* 6: e24116.
59. Martinussen M, Fischl B, Larsson HB, Skranes J, Kulseng S, et al. (2005) Cerebral cortex thickness in 15-year-old adolescents with low birth weight measured by an automated MRI-based method. *Brain* 128: 2588–2596.
60. O'Donnell S, Noseworthy MD, Levine B, Dennis M (2005) Cortical thickness of the frontopolar area in typically developing children and adolescents. *Neuroimage* 24: 948–954.
61. Lou HC (1996) Etiology and pathogenesis of attention-deficit hyperactivity disorder (ADHD): significance of prematurity and perinatal hypoxic-haemodynamic encephalopathy. *Acta Paediatr* 85: 1266–1271.
62. Mallard EC, Rees S, Stringer M, Cock ML, Harding R (1998) Effects of chronic placental insufficiency on brain development in fetal sheep. *Pediatr Res* 43: 262–270.
63. Rees S, Harding R, Walker D (2008) An adverse intrauterine environment: implications for injury and altered development of the brain. *Int J Dev Neurosci* 26: 3–11.
64. Rehn AE, Van Den Buuse M, Copolov D, Briscoe T, Lambert G, et al. (2004) An animal model of chronic placental insufficiency: relevance to neurodevelopmental disorders including schizophrenia. *Neuroscience* 129: 381–391.
65. Fox SE, Levitt P, Nelson CA 3rd (2010) How the timing and quality of early experiences influence the development of brain architecture. *Child Dev* 81: 28–40.
66. Paus T (2013) How environment and genes shape the adolescent brain. *Horm Behav* 64: 195–202.
67. Aron AR, Durston S, Eagle DM, Logan GD, Stinear CM, et al. (2007) Converging evidence for a fronto-basal-ganglia network for inhibitory control of action and cognition. *J Neurosci* 27: 11860–11864.
68. Jahfari S, Stinear CM, Claffey M, Verbruggen F, Aron AR (2010) Responding with restraint: what are the neurocognitive mechanisms? *J Cogn Neurosci* 22: 1479–1492.
69. Valera EM, Faraone SV, Murray KE, Seidman IJ (2007) Meta-analysis of structural imaging findings in attention-deficit/hyperactivity disorder. *Biol Psychiatry* 61: 1361–1369.
70. Muennig P, Schweinhart L, Montie J, Neidell M (2009) Effects of a prekindergarten educational intervention on adult health: 37-year follow-up results of a randomized controlled trial. *Am J Public Health* 99: 1431–1437.
71. Berglund SK, Westrup B, Hagglof B, Hernell O, Domellof M (2013) Effects of iron supplementation of LBW infants on cognition and behavior at 3 years. *Pediatrics* 131: 47–55.
72. Makrides M, Anderson A, Gibson RA, Collins CT (2013) Improving the neurodevelopmental outcomes of low-birthweight infants. *Nestle Nutrition Institute workshop series* 74: 211–221.