

1

On Forensic Use of Biometrics, with Face and Ear Recognition

Banafshe Arbab-Zavar¹, Xingjie Wei², John D. Bustard¹, Mark S. Nixon¹
and Chang-Tsun Li²

¹*University of Southampton, UK*, ²*University of Warwick, UK*

1.1 Introduction

This chapter examines the use of biometrics techniques within forensic science. It discusses the historic connections between the subjects and then examines face and ear biometrics in detail. The detailed examination starts from one of the most common and familiar biometric features - face - and then introduces a new biometric feature - ear - into forensics.

Face is the natural means for human beings to recognise each other. Face biometric applications are widely used in our daily lives. However, currently no fully automatic face recognition system is accepted by the judicial system. This chapter introduces the manual and computer-aided forensic face recognition, explains the differences between automatic face recognition system (biometrics) and forensics and outlines the current progress towards addressing the challenges existing in face recognition.

Ear biometrics is a potentially important biometric feature, and there has been much research progress. The current state of formal validation of ears as a forensic tool is discussed and a set of morphological features along with an analysis of their discriminatory powers are presented. These features are important in deciding whether there is enough information available for identification in case of missing features. The terminology associated with these features may also assist with communicating ear comparison results to juries, an important step in making such evidence effective at trial.

1.2 Biometrics and Forensics

Forensic science largely concerns the analysis of crime: its existence, the perpetrator(s) and the modus operandi. The science of biometrics has been developing approaches that can

be used to automatically identify individuals by personal characteristics. The relationship of biometrics and forensics centres primarily on identifying people: the central question is whether a perpetrator can reliably be identified from scene-of-crime data or can reliably be excluded, wherein the reliability concerns reasonable doubt. The personal characteristics which can be used as biometrics include face, finger, iris, gait, ear, electroencephalogram (eeg), handwriting, voice and palm. Those which are suited to forensic use concern traces left at a scene-of-crime, such as latent fingerprints, palmprints or earprints, or traces which have been recorded, such as face, gait or ear in surveillance video. So far, biometrics have primarily been used to assure identity (in immigration and commerce etc.) and there is a natural linkage to forensics.

One of the earliest attempts to use biometric data for identification dates back to the 1880s when the French criminologist Alphonse Bertillon proposed a method based on anthropometric measurements. Bertillon suggested this method as a means for classification and sorting of the records of individuals and searching among them (Bertillon 1893). In 1890, Bertillon set forth a set of standards for forensic photography. He also developed a taxonomy to describe some of the physiological features of the head, including: nose, forehead, and ear. He called this *portrait parlé* or *spoken portrait* (Bertillon 1890). The combination of the anthropometric measurements and the *spoken portrait* developed by Bertillon is called *Bertillonage* and was fast adopted by the police and the judicial systems. Around the same time, Hendry Faulds proposed the use of fingerprints for identification (Faulds 1880). Although fingerprints were first considered with scepticism, they gradually replaced Bertillonage as the main method of forensic identification, especially after the West v. West case concerning a pair of suspects who could not be disambiguated by the Bertillon's methods. Among the advantages of fingerprints over Bertillonage was their relative ease of use and that one could not find traces of Bertillonage's anthropometric measurements at the scene of crime while fingerprints were in abundance. The later developments in biometrics largely followed the development of computer vision techniques, enabling identification by other bodily attributes.

In *Frye v. United States* 1923, a federal court was faced with the question of expert evidence admissibility. The court concluded that the expert evidence could be admitted to court only if this expertise had gained *general acceptance* in the field in which it belongs. In 1993, in *Daubert v. Merrell Dow Pharmaceuticals* a new standard for expert evidence admissibility was introduced by the U.S. supreme court. In this, the proffered expert testimony must be shown to be based on reliable foundations. To show this, it is required to determine if the proffered science has been tested, if this testing was based on a sound methodology and also to take into account the results of this testing. This new standard was considered as a paradigm shift (Saks and Koehler 2005) and it was suggested that fingerprints could be one of the first forensic methods to make this transition since the required large databases already exist in this field. In fact, the use of handwriting and fingerprint evidence has been challenged for use in court procedure 1999, leading to a study of whether fingerprints are permanent and unique (Pankanti et al. 2002). This raised concerns in: the fallibility of fingerprint evidence; the performance in degraded imagery; the performance of available techniques and the need for its improvement. Such debate is not new in science since the development of any new technique must be justified in terms of societal use. Further, when it is to be deployed in serious crime where punishment can be severe then error cannot be tolerated. Indeed, the need for individualisation as a forensic

paradigm was later to be questioned (Cole 2009). The current state of the art of biometrics in forensics is more nascent than established. The first IEEE/IAPR International Workshop on Biometrics and Forensics (IWBF) was held only recently in early 2013, arising from the EU-sponsored ICT COST Action IC1106 on Integrating Biometrics and Forensics for the Digital Age (http://www.cost.eu/domains_actions/ict/Actions/IC1106). Just earlier the first Workshop on Databases in Biometrics, Forensics and Security Applications (DBforBFS) was held as satellite workshop of the 2013 BTW Conference (on database systems in Business, Technology and Web). The technical programs for these workshops considered face, hand-based, behavioural and other biometrics and forensics together with considerations of performance and database construction, especially for forensic deployment and analysis. There have been other previous conference sessions, and the successful emergence of conferences in new specialist topics generally underlines not only their contemporary nature, but also the importance of an emerging new subject.

When fingerprints were suggested by in 1880, little investigation had been performed over their individuality and there was no mention of the error rates for the identification predictions. In courts, other expertise were also being offered and admitted which seriously lacked the backing of proper scientific testing and statistical measures of performance. In this respect, many mistakes were made and are still being made. Saks and Koehler (2005) reported that in 86 DNA exoneration cases the error due to forensic science testing errors is ranked very high at 63% and that it is second only to the eyewitness errors with 71%. In terms of performance, the main aim of biometrics is to verify if a person has a claimed identity (a so called *on-to-one matching*) and identification (*one-to-many matching* where a subject is compared with a database). In forensics, the conclusion concerns likelihood between a suspect and evidence. In fingerprints evidence can lead to three conclusions: individualisation, exclusion or inconclusiveness (Champod 2000). The probability of matching can also be graded as impossible, possible, probable or very likely. In DNA analysis, the potential error rate is usually couched in terms of the likelihood of mismatch, which is another representation of probability.

In terms of the literature, the majority of approaches describe analysis of latent fingerprints. However, there is also use of voice for speaker identification, face identification, dental biometrics, DNA and handwriting, which are all established biometrics in their own right (Dessimoz and Champod 2008). In terms of emerging biometrics, so far there has been one deployment of gait biometrics for identification (Bouchrika et al. 2011; Guan and Li 2013; Guan et al. 2013) and there is now a system aimed at such use (Iwama et al. 2012). Soft biometrics is a more recent interest and can handle low quality surveillance data (Park and Jain 2010). Ears were considered in Bertillon's pioneering early study where the ear was described as the most identifying part of an individual and proposed a method for ear classification, and the length of the ear was one of the eleven measures that were used. One early forensics study (Spaun 2007) described interest in facial and ear individualization, adding the possibility of exploring additional biometrics including hands and gait and observing that additional ear analyses are needed. Instead of databases of hundreds of ears, thousands of ears, or more.

Manual and automated biometric techniques can be used to analyse and interpret biometric traces in the following three tasks of forensics: (1) demonstrate the existence of an offense, (2) investigate an offense, and (3) individualise a perpetrator. There are many examples of using biometrics in the above tasks: identity verification (e.g. criminal ID management) and

identification (e.g. suspect or victim identification), forensic intelligence (e.g. case linking from biometric traces), criminal investigation (e.g. suspect rank list generation), forensic evaluation (e.g. biometric evidence value description), etc. In this chapter, to introduce the use of biometrics in forensics, we will first start from face biometrics which is a natural way for humans to identify each other and then we concentrate on the forensic possibility of using ears as a biometric given that ears are currently topical in biometrics.

1.3 Why face ?

Since the advent of photography, both government agencies and private organizations have kept face photo collections of people (e.g. personal identification documents, passports, membership cards, etc.). With the wide use of digital cameras, smart phones and CCTVs, face images can be easily generated every day. In addition, these images can be rapidly transmitted and shared through the highly developed Internet (e.g. social network) nowadays. Face is the most common and familiar biometric trait in our daily lives. Therefore, there are more opportunities to acquire and analyse face images of a questioned person (e.g. suspect, witness or victim) for forensic investigation purposes.

Face recognition has a long history and receives research interests from not only computer scientists, but also neuroscientists and psychologists (Sinha et al. 2006). Compared with other biometric traits, face has several advantages that make it one of the most preferred biometric traits for human identification:

- *Biological nature*: Face is a very convenient biometric characteristic used by humans in the recognition of people, which makes it probably the most common biometric trait for authentication and authorization purposes. For example, in access control, it is easy for administrators to track and analyse the authorised person from his/her face data after authentication. Whereas fingerprint or iris recognition systems require an expert with professional skills to provide reliable confirmation. The help from users can improve the reliability and applicability of the recognition systems.
- *Non-intrusion*: Different from fingerprint and iris collections, facial images can be easily acquired from a distance without physical contact. People feel more comfortable for using face as identifier in daily lives. A face recognition system can collect biometric data in a user-friendly way, which is easily accepted by public.
- *Less cooperation*: Compared with iris and fingerprint, face recognition has a lower requirement of user cooperation. In some particular applications such as surveillance, a face recognition system can identify a person without active participation from the subjects.

The first attempt to identify a subject by comparing a pair of facial photographs was reported in a British court in 1871 (Porter and Doran 2000). Face recognition is one of the most important tasks in forensic investigations if there is any video or image material available from a crime scene. Forensic experts perform manual examination of facial images to match the images of a suspect's face. The use of automated facial recognition systems will not only improve the efficiency of forensic work performed but also standardise the comparison process.

1.4 Forensic face recognition

In the past, before the use of computers, face recognition was already widely used in forensics. Bertillon's work was one of the first systematic approaches to face recognition in forensics (Bertillon 1893) as we mentioned in Section 1.2. Currently forensic face recognition is mainly performed manually by humans. In a typical forensic face recognition scenario, a forensic expert is given two face images: one is from a suspect (e.g. a mug-shot image) and the other is from a questioned person (i.e. the perpetrator). The forensic expert will give a value which represents the degree to which the two images appear to come from the same person.

There are usually four categories of approaches in forensic face recognition (Ali et al. 2010; Dessimoz and Champod 2008): *holistic comparison*, *morphological analysis*, *anthropometry*, and *superimposition*. The choice of a specific approach depends on the face images to be compared and generally a fusion of these methods is applied in the real case analysis scenarios. For face comparison, currently there is no standard procedure and agreed upon guideline among forensic researchers. Some working groups such as the Facial Identification Scientific Working Group (FISWG²) of FBI, the International Association for Identification (IAI³) and the European Network of Forensic Science Institutes (ENFSI⁴) are devoting to develop standards and guidelines for forensic face comparison.

- *Holistic comparison*. In holistic comparison, faces are compared as a whole by the forensic experts. This is the simplest way and can be performed as a pre-step for other methods. Automatic face recognition systems can be designed to help for this not only on one-to-one comparison but also on one image compared to a large-scale gallery database.
- *Morphological analysis*. In morphological analysis, the local features of the face will be analysed and compared by the forensic experts who are trained in that discipline. They carry out an exhaustive analysis on the similarities and differences in observed faces, trait by trait on nose, mouth, eyebrows, etc., even the soft traits such as marks, moles, wrinkles, etc. The location and distribution of local facial features are considered but not explicitly measured compared with anthropometry based approaches. One example of the examined facial features currently used by the Netherlands Forensic Institute⁵ are summarised in Table 1.1 (Meuwly 2012). It can be seen from the table that both internal and external features of the face are considered. These features are usually fall into two categories (Spaun 2011): (1) *class characteristics* which can place an individual within a group (e.g. facial shape, shape of the nose, freckles, etc.) and (2) *individual characteristics* which are unique to distinguish the individual (e.g. skin marks, scars, creases, wrinkles, etc.). Generally, the forensic experts need to make the conclusion based on the following comparison criteria for these local features: (1) *Similar*: imaging conditions are not optimal, in a sense that differences might be invisible; (2) *No observation*: observation is not possible due to circumstances; and (3) *Different*: observed differences may be explained by differences in the imaging conditions.

²<https://www.fiswg.org/>

³<http://www.theiai.org/>

⁴<http://www.enfsi.eu/>

⁵<http://www.forensicinstitute.nl/>

Table 1.1 Example of facial features examined

Feature	Characteristic
Face	Shape, proportions, hairline
Forehead	Shape, bumps, horizontal creases, eyebrows
Eyes	Distance, angle fissure, colour, eye slit shape, creases, bags, wrinkles
Nose	Length, width, prominence, symmetry, shape of tip and nostrils, septum
Mid part of face	Cheekbones, cheek line, cheek-eye groove, cheek-nose groove
Ear	Size, protrusion, shape of helix and antihelix, darwin's tubercle, earlobe
Mouth	Size, shape, upper lip, lower lip
Mouth area	Shape of philtrum, moustache and shadow, beard and shadow
Chin	Shape, groove between mouth and chin, dimple, double chin
Low jaw	shape
Throat	Adam's apple
Distinctive feature	Skin marks, scars, creases and wrinkles

- *Anthropometry.* Anthropometry refers to the measurement of the human individual, which can be used for human identification. Different from morphological analysis, in face anthropometry, the quantification measurements (e.g. spatial distance and angles) between specific facial landmarks (e.g. the mid-line point between the eyebrows, the lowest point on the free margin of the ear lobe, the midpoint of the vermilion border of the lower lip, the most anterior midpoint of the chin, etc.) are used for comparison. However, usually blemishes on the face such as scars are not considered. When anthropometric measurements are taken from photographs rather than from the face of a living person, it is called *photo-anthropometry*. The face images being compared should be taken from the same angle and direction and has a high quality to be able to detect the facial landmarks. These requirements limit the use of anthropometry approaches in uncontrolled scenarios (e.g. surveillance situations). At present, anthropometry based methods are suitable to be used to exclude the questioned person rather than to make a positive identification.
- *Superimposition.* In superimposition, one face image is overlaid onto another and the forensic experts need to determine whether there is an alignment and correspondence of the facial features. These images should be captured under the same pose and be processed to the same scale. This category of approaches is not accurate due to their high requirement that the compared images should be taken under the same conditions. Generally, in forensics, superimposition can be performed not only between two face images but also between a face and a skull (Ibañez et al. 2011). In addition, superimposition is also widely used in forensic facial reconstruction (Aulsebrook et al. 1995) which aims to recreate the face of an individual (whose identity is often not known) for recognition purpose. Automatic face recognition system can be developed in the direction of modelling a 3D face/head model to compare with a 2D query image. In this way, the pose, angle and orientation of the face can be adjusted using the 3D models.

Notice that in the aforementioned forensic face recognition methods, ears are also considered as an external feature of the face. The ear is an important emerging biometric

trait and is stable throughout adulthood. We will discuss the use of ear biometrics in the forensic tasks later.

1.5 Automatic face recognition methods

A general automatic face recognition system usually consists of the following modules: face detector, feature extractor and matcher. Face detector crops the face area from the background. Feature extractor then extracts effective information from face images for distinguishing different individuals. Usually pre-processing such as face alignment by the facial landmarks and face normalization (e.g. scale, illumination condition) will be performed before feature extraction. Then the matcher will compare two faces by the extracted features. Face recognition performance highly relies on the extracted features and classification algorithms used to distinguish faces.

In the early time, the main recognition approaches are geometric feature-based methods which rely on measurements between specific facial landmarks. This is similar as the anthropometry based methods in the forensic face recognition. The first attempts to automatic face recognition started in 1965 (Chan and Bledsoe 1965) in a semi-automated mode where a set of facial features were extracted from the photographs by humans. The first fully automatic face recognition system was developed by Kanade in 1973 (Kanade 1973), which was a milestone at that time. In 1990s, the linear subspace analysis approaches and the statistical models became the mainstream. The popular methods included Eigenface (Turk and Pentland 1991), Local Feature Analysis (LFA) (Penev and Atick 1996), Fisherface (Belhumeur et al. 1997), Elastic Graph Matching (EGM) (Wiskott et al. 1997), Active Shape Model (ASM) (Cootes et al. 1995) and Active Appearance Model (AAM) (Cootes et al. 1998). From the late 90s to present, the research of face recognition has focused on the uncontrolled and uncooperative scenarios (e.g. large pose changes, illumination and expression variations, low resolution, partially occluded faces, etc.). Illumination core model (Georghiades et al. 2001), 3D Morphable Model (Romdhani et al. 2002) and Locally Linear Embedding (LLE) (Roweis and Saul 2000), Sparse Representation based Classification (SRC) (Wright et al. 2009) are the representative methods in this period. A systematic survey of automatic face recognition can be found in the work of Zhao et al. (2003).

Over the past decades, major advances occurred in automatic face recognition. The false reject rate (FRR) of the best performing face recognition algorithm has decreased from 79% in 1993 to 1% in 2006 at a false accept rate (FAR) of 0.1% (Phillips et al. 2010). However, the performance in unconstrained environment is still unsatisfactory. Although biometric face recognition has been successfully used in the field of security (e.g. access control, video surveillance, etc.), until now, there is no automatic face recognition system that has been accepted by the judicial system. A full and systematic assessment of the automatic face recognition technology must be conducted under realistic conditions before it can be utilised for forensic applications.

1.6 Role of automatic face recognition in forensics

An automatic face recognition system is used in the forensic face recognition scenarios for helping on queries against a large gallery database (e.g. mug-shots images). The query can be a *one-to-many search* to determine matches to a query image from a gallery of images, or a

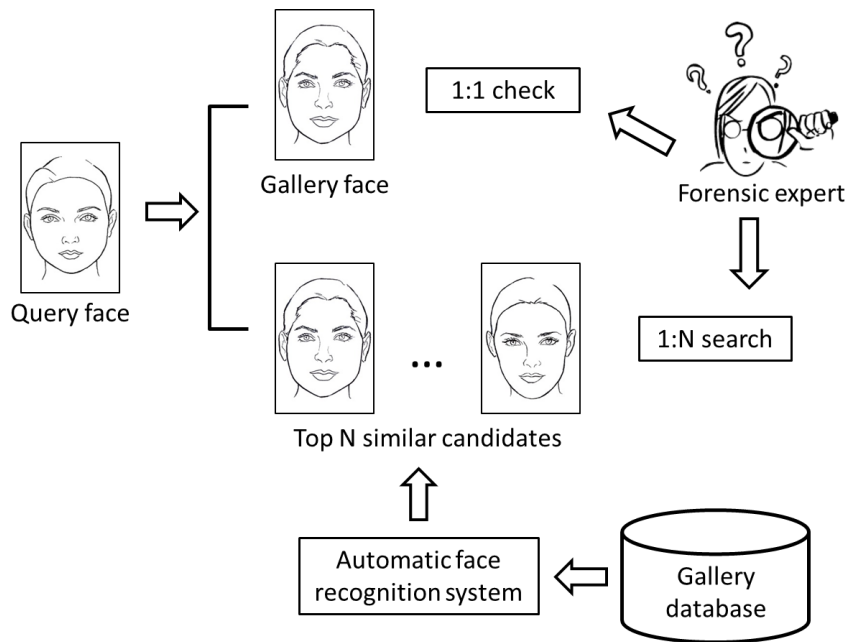


Figure 1.1 Schematic of forensic face recognition process.

one-to-one check to verify the identity of an individual. Automatic face recognition systems are usually used as an assistant tool in forensics approaches as we introduced before. Figure 1.1 shows the schematic of forensic face recognition process. Forensic face recognition is not yet fully automatic. There are several differences between face recognition system in biometric and forensic context (Ali et al. 2010):

- **Mechanism.** Different from the biometric system which is usually based on the decision mechanism, a forensic system produces a substantial number of candidates which need to be reviewed by the forensic experts.
- **Accuracy.** Forensic face recognition usually requires higher accuracy than that in biometrics. The consequences of a wrong conclusion made by forensic face recognition are far more severe than for most other biometric face recognition applications.
- **Time.** Compared with biometric applications which usually have real-time requirements, forensic face recognition can be carried out *off-line*. It has fewer time constraints and generally includes humans in the process loop to guarantee the overall accuracy of the final conclusion.
- **Measurement.** In biometric face recognition systems, the performance measures are based on similarity scores. This is not suitable to the judicial system where the objective is to give a degree of support for one hypothesis against another incorporating the prior knowledge about the case. In forensic face recognition, the conclusion made by the expert will on a grading scale in the form of a measure of support for favour or

against identity. For example, it can be stated as: no support, limited support, moderate support, strong support and very strong support.

1.7 Challenges and trends of face recognition

Like in many biometric applications, the appearance variations caused by the unconstrained conditions are still challenges for face recognition in the context of forensic scenarios. Currently automatic face recognition system is only regarded as an assistant tool in forensic tasks. This section will discuss several specific face recognition problems which may also be difficult even for forensic experts. These challenges should be addressed in the future research in both biometric and forensic face recognition (Jain et al. 2011).

1.7.1 *Partial/occluded face recognition*

In the real-world environment, a face may be captured in arbitrary pose without the user's cooperation. It's very likely that the image only contains a partial face due to non-frontal pose, underexposure or overexposure, and other object in front of the face (Liao et al. 2013). In forensic face recognition, it is needed to find a suspect in the crowd by matching a partially occluded face with stored gallery database.

Currently there are two main research perspectives in partial/occluded face recognition: *reconstruction* and *patch-matching*. The first one represents a face as a linear combination of base face images (Wagner et al. 2012; Wei et al. 2012; Wright et al. 2009) or feature descriptors (Liao et al. 2013). Then the partial/occluded query face is assigned to the class with the minimal reconstruction error. The latter one (Tan et al. 2009; Wei et al. 2013) partitions a face image into sub-patches wherein features are extracted. Recognition is performed based on the unaffected parts of the face. In 2013, Klontz and Jain from Michigan State University conducted a case study (Klontz and Jain 2013) that using the photographs of the two suspects in the Boston Marathon bombings to match against a background set of mug-shots. The suspects' photographs released by the FBI were captured under uncontrolled environment and their faces were partially occluded by sunglasses and hats (Comcowich 2013). The study shows that current commercial automatic face recognition system has the notable potential to assist law enforcement. But the matching accuracy was not accurate enough and more progress must be made to increase the utility in unconstrained face images.

1.7.2 *Heterogeneous face recognition*

Heterogeneous face recognition involves matching two face images from alternate imaging modalities. This is very piratical in forensic scenarios. In the London riots in 2011, the police use face recognition system to help to find the riot suspects of being involved in the unrest. The images of suspects are usually came from various sources, e.g. still images captured from closed-circuit cameras, pictures gathered by officers, footage taken by the police helicopters or images snapped by members of the public. These images are usually from various sources from different modalities. In addition, in some extreme situations, only a particular modality of a face image is available. For example, in night-time environments, infrared imaging may be the only modality for acquiring a useful face image of a suspect. But the stored mug-shots by the police are visible band images. Another example is the sketch-photograph matching.

When no photograph of a suspect is available, a forensic sketch is often generated according to the description of an eye-witness. Matching sketches against face photographs is very important for forensic investigation.

There are three categories of approaches in current heterogeneous face recognition. The first one is the *feature based method* (Klare and Jain 2010; Klare et al. 2011; Lei and Li 2009) which represents face images with discriminative features that are invariant in different imaging modalities. The second one is the *synthesis based method* (Tang and Wang 2004; Wang and Tang 2009; Zhang et al. 2010) which converts a face image in one modality (e.g. sketch) into another (e.g. photograph). And the third one is the *prototype based method* (Klare and Jain 2013) which reduces the gap between two modalities by using the prototype as a bridge. 2D-3D face matching is a future research direction since face can be represented by heterogeneous features in the 3D and 2D modalities in the real-world cases.

1.7.3 Face recognition across ageing

Facial ageing is a complex process that affects both the shape and texture (e.g. skin tone or wrinkles) of a face. The typical application scenario of face recognition systems against ageing effect is to detect if a particular person is present in a database (e.g. missing children identification and suspect watch-list check). As the age between a query and a reference image of the same subject increases, the accuracy of recognition system generally decreases.

In automatic face recognition, ageing effect in human faces has been studied in two directions: (1) developing *age estimation techniques* to classify face images based on age (Geng et al. 2007; Guo et al. 2008) and (2) developing *ageing robust systems* to perform recognition. In the early time, researchers tried to simulate the ageing effects by developing the ageing function and then performing automatic age estimation based on that (Lanitis et al. 2002). But modelling the complex shape or texture variations of a face across ageing is a very challenging task. Nowadays, researchers propose the generative ageing model (Li et al. 2011) which learns a parametric ageing model in the 3D domain to generate synthetic images and reduce the age gap between query and reference images. One most challenging aspect of face recognition across ageing is that it must address all other unconstrained variations as well. Pose, expression, and illumination changes can occur when two images of a person are taken years apart.

Up to now, we have introduced the forensic use of face recognition and discussed some challenges needed to be addressed in both biometric and forensic face recognition in the future. In the real forensic scenarios, usually a combination of information from different biometric traits is applied for case analysis. In the following sections, we will introduce one emerging biometrics - ear which is highly related to face but has its own advantages. Since the forensic use of ear as a biometric is in a different stage of its life cycle compared to face, as well as looking at the methods of comparison, we will discuss the earlier question of admissibility in court. Earprints and ear images are considered separately as two different representations of ear. The less familiar features of ear, along with their correlations and variability are also discussed.

1.8 Ears as a Means of Forensic Identification

Although ears are an external part of the head, and are often visible they do not tend to attract human attention and a vocabulary to describe them is lacking. As for the latent prints, the common ones to be found in crime scenes are of fingertips, palms, and feet. Although earprints may also be found in crime scenes fingerprints are much more abundant. The fact that the forensic use of ears and some of the other biometric traits was halted by the advent of fingerprints is partly due to this practical advantage. Dutch courts have admitted numerous cases of earprint related evidence (Van der Lugt C 2001). Earprints have also been used as a means of personal identification in other countries, such as the United States, UK, Germany and Switzerland. In Germany both earprints and ear images have been used for identification (Champod et al. 2001). In Switzerland, latent earprints have been used to assist in the early stages of investigation in burglary cases (R. v. Mark Dallagher 2002). While in a number of higher profile cases the reliability of earprint evidence has been challenged, been refused admittance or caused erroneous convictions. The evidence regarding earprints is mainly contested due to three main factors: (1) pressure deformation; and (2) the lack of generally accepted methodologies for comparison and (3) the lack of large scale testing.

A study of potential identification capabilities of ears was performed by Alfred Iannarelli who examined over 10,000 ear samples over 38 years (Iannarelli 1989). and developed the Iannarelli System of Ear Identification. His system essentially consists of taking a number of measurements from a set of landmark points on the ear. He concluded:

”Through 38 years of research and application in earology, the author has found that in literally thousands of ears that were examined by visual means, photographs, ear prints, and latent ear print impressions, no two ears were found to be identical”

Despite his extensive experience with different forms of ear representation in forensics, in 1985 the Florida trial court of *State v. Polite* 1985 did not recognize him as an expert on earprint identification on the grounds that his ear identification method was not generally accepted in the scientific community. The court also raised concerns over the effects of pressure deformation on the appearance of earprints and also over the lack of studies concerning the comparison of earprints and refused to accept the earprint identification evidence altogether. The later development of ears as a biometric was to rely on the pioneering work of Iannarelli.

1.9 Can Ear Biometrics help?

Ear biometric recognition is the study of automatic or semi-automatic methods for human identification or verification using 2D or 3D ear images. In comparison to the forensic references to the usage of ear morphology for recognition, the automated recognition of ear images in the context of machine vision is a recent development. Burge and Burger Burge and Burger (1998) were amongst the first to investigate the automated recognition of ears. Inspired by the earlier work of Iannarelli, they conducted a proof of concept study where the viability of the ear as a biometric was discussed theoretically, in terms of the uniqueness and measurability over time, and examined in practice through the implementation of a computer vision algorithm. Since then, there have been many ear biometric methods looking at 2D and

3D images of the ear while also attempting to overcome challenges such as occlusion, pose variation and illumination conditions.

The advantages that ear biometric studies can offer the field of ear forensic identification are twofold. Firstly, to advance and inform earprint recognition methods, and secondly, to introduce and facilitate the new emerging application of identification at a distance from surveillance footage. Pressure deformation is one of the main reasons why earprint evidence is contested. Being composed of malleable parts, the appearance of an earprint can be much influenced by the amount of pressure which is applied in making the print. A 3D model of the ear, as offered by 3D ear biometrics methods, may be useful in predicting the appearance of its earprint under different amounts of pressure. Another hindering factor for the application of earprints for identification is the missing features of the ear in an earprint. Due to the different elevations of the external ear parts, some of the ear components are commonly missing in earprints. Owing to the missing information, it can be debated that earprints present less variability than ear images. We will show that the insights offered by the ear biometric studies as to the degree of discrimination provided by different ear features can be used to evaluate the information content of ear prints for identification.

Ear images from surveillance cameras have also been considered for forensic identification. Although this is considered a new development in the field of ear forensic identification, it is the core problem in ear biometrics. Thus the methodologies developed in ear biometrics may be readily transferable for use in this application. Automatic biometrics methods can also offer desirable properties for efficient processing of large datasets and attribute the performance and error rate directly to specific methodologies. Using automatic biometric methods can also provide reproducible results and eliminate operator bias. The time is now ripe for the application of biometrics in forensics.

In the next section, we will review earprint identification, its role as forensic evidence, its shortcomings and possible improvements. In section 1.11, we will look at specific automatic biometric methods and how they can be used for forensic identification from surveillance capturing, and in section 1.12 we will review the discriminant capabilities of individual ear features and how they can be used to infer the level of confidence in predictions from data which are prone to having missing features.

1.10 Earprints in Forensics

Earprints, which may be found in up to 15% of crime scenes (Rutty et al. 2005), are latent prints left behind as a result of the ear touching a surface, for example while listening at a door. In a legal context, the evidence regarding earprints could be utilized for various purposes including: dismissing a suspect, increasing evidence against a suspect or identifying possible suspects (Meijerman et al. 2004). Earprints have been used as a means of personal identification in different countries, however, in a number of cases the reliability of earprint evidence has been challenged. Figure 1.2 shows some sample earprints.

1.10.1 Earprint – a Challenged Forensic Evidence

In the cases involving earprint evidence for positive identification, two issues have been the main source of dispute. One is the admissibility of this evidence and the other is its reliability. In the United States and under the Daubert standard, all forensic expertise is

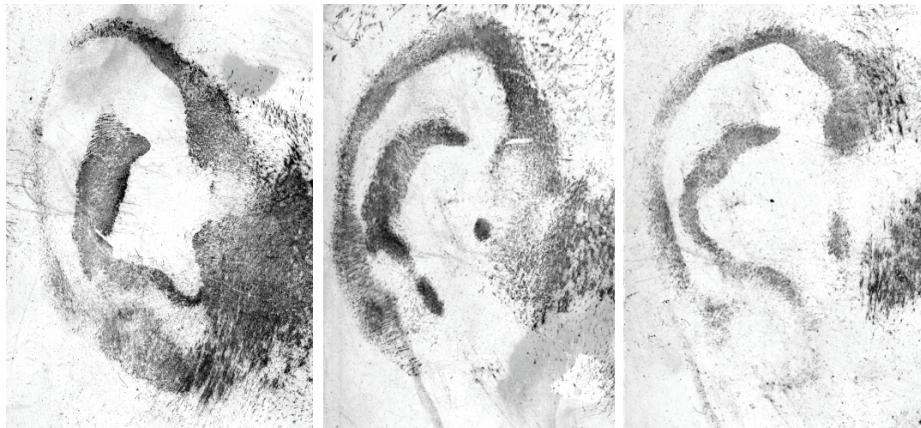


Figure 1.2 Sample earprints (from Meijerman (2006)).

subjected to a scientific scrutiny over its reliability and accuracy. In this setting, the judge acts as a *gatekeeper* and determines whether the proffered forensic evidence accords to that standard. The forensic science in question does not need to be error free to be admissible; indeed there is always a level of error involved. However, a measure of this error should be made available through rigorous testing. This, however, is not a straightforward task while the question regarding the size of the dataset, which is needed to obtain the required reliability and the statistical evaluation of performance, has not been addressed.

The admissibility of earprint evidence was a key issue in the case of *State v. Wayne Kunze* 1999. In Washington State in 1996, David Wayne Kunze was charged with aggravated murder amongst other charges. The key evidence against Kunze was a latent earprint found at the scene. Prior to the trial, Kunze moved for excluding any evidence of earprint identification. Subsequently, the trial court convened a Frye hearing on the matter and many ear experts and latent print experts were called. The hearing concluded that earprint identification has indeed gained general acceptance and thus the earprint evidence was admitted. However, later at the appeal court, after reviewing the evidence given at this pre-trial hearing, the appeal court concluded that general acceptance was not obtained "if there is a significant dispute between qualified experts as to the validity of scientific evidence", and since the hearing clearly showed such dispute, the appeal court ruled that the trial court erred by allowing the expert witnesses to testify and that a new trial was required. In the case of *State v. Polite* (US, Florida trial court) 1985, the court also refused to admit the earprint evidence. In excluding the earprint evidence the judge raised concerns over the unknown effect of pressure deformation and insufficient scientific background to establish reliability and validity of earprint identification.

Relevancy is another guideline for admissibility under Daubert. Relevancy is defined as (Rule 401, Federal Rules of Evidence): "Evidence is relevant if: (1) it has any tendency to make a fact more or less probable than it would be without the evidence; and (2) the fact is of consequence in determining the action".

In the United Kingdom, in the appeal court of *Mark Dallagher* 2002, the court examined

the question of expert evidence admissibility. In 1998, in the Crown Court at Leeds, Mark Dallagher was convicted of murder and sentenced to life imprisonment. In this trial an earprint discovered at the scene of crime was one of the main pieces of the evidence against the defendant. Two expert witnesses testified that the defendant was the certain or highly likely maker of the latent earprints. No expert evidence was called on behalf of the defendant and the defence did not seek to exclude the evidence of the prosecution experts. Fresh evidence against the use of earprints for positive identification was offered as grounds for appeal. The appeal court subsequently refused the appellant's argument that if this expert evidence was available at the trial the prosecution's expert evidence should have been excluded. For this, references were made to other cases, such as *R. v. Clarke* 1995 on facial mapping expert evidence:

"It is essential that our criminal justice system should take into account modern methods of crime detection. It is no surprise, therefore, that tape recordings, photographs and films are regularly placed before juries. Sometimes that is done without expert evidence, but, of course, if that real evidence is not sufficiently intelligible to the jury without expert evidence, it has always been accepted that it is possible to place before the jury the opinion of an expert in order to assist them in their interpretation of the real evidence."

And continuing:

"We are far from saying that such evidence may not be flawed. It is, of course, essential that expert evidence, going to issues of identity, should be carefully scrutinised. Such evidence could be flawed. It could be flawed just as much as the evidence of a fingerprint expert could be flawed. But it does not seem to us that there is any objection in principle."

The appeal court concluded that the expert evidence could not possibly be considered irrelevant, or so unreliable that it should be excluded. Albeit, the appeal court eventually quashed the conviction and ordered a retrial on the grounds that it seemed that if the fresh evidence was given at the trial it might have affected the jury's approach toward the crucial earprint identification evidence.

In the appeal court of *R. v. Mark Kempster* 2008, the admissibility of the ear evidence was also a cause of debate. In 2001, Mark Kempster was convicted of multiple counts of burglary and attempted burglary at Southampton Crown Court. One of the main pieces of evidence against him was a positive identification of an earprint which was recovered from the scene of crime as his earprint. He appealed against the conviction twice and in 2008 the appeal was brought on the ground that relevant fresh evidence might have undermined the expert prosecution evidence, of positive earprint identification. In the court of appeal, the defence argued against the admissibility of earprint evidence. The defence also argued that while earprint evidence may be used for excluding a suspect, a positive identification cannot be obtained using earprint evidence. Both the prosecution and defence experts agreed that this area of science was in its infancy. However, they disagreed on the results of comparing the earprint found at the scene and the prints of the appellant. The appeal court eventually concluded that the earprint evidence was admissible, and could be used by the jury to decide if it was indeed the appellant who left the mark at the scene. The judge, thus, directed the jury:

”First of all consider the evidence of the earprint. Are you sure that the earprint was Mr Kempster’s? If you are not sure then you must acquit Mr Kempster on Count 1.”

And the jury subsequently quashed the conviction on count 1 burglary. Thus, again, although the earprint evidence was admitted its reliability was challenged. Whether the earprint evidence is blocked out as an inadmissible expertise or is challenged on its reliability, it is apparent that it does not hold an assured status as a forensic method for positive identification. Next, we will look into the reasons for this and discuss as to how a more reliable earprint evidence maybe obtained.

1.10.2 Pressure Deformation

Due to their different elevation and flexibility, ear ridges react differently to the changes in pressure and cause large intra-individual variations. The unknown effects of pressure deformation is one of the main reasons why earprint evidence is contested. To overcome this problem, it has been suggested that for each ear the control prints can be captured using different amounts of pressure and when comparing these control prints to a latent print only the best match would be considered. Junod et al. (2012) also proposed to combine the different earprint samples of an ear to build an earprint model. Hypothesising that in practise a perpetrator will be listening for a sound, Alberink and Ruifrok (2007) proposed that a more realistic dataset of control prints can be acquired by applying a *functional force*. In this, the donors were instructed to listen for a sound behind a glass surface.

A different and perhaps a more comprehensive approach may be offered using a 3D model or a 3D image of the donor ear. Combined with a model of external ear part-wise elasticity, the 3D model can be used to synthesize a set of possible earprints that can be generated by an individual ear. A 3D model of the ear can be acquired using a range scanner (Chen and Bhanu 2007; Yan and Bowyer 2007). There are also methods which use 2D ear images to infer the 3D model of the ear (Bustard and Nixon 2010a; Cadavid and Abdel-Mottaleb 2008).

1.10.3 Variability and Missing Features

The evidence regarding the variability of ear morphology is regarded as relevant but not directly usable in the field of earprint identification, since not all the parts of the ear leave a mark in an earprint. Due to the different elevations of the external ear parts, some of the ear components are commonly missing in earprints. The parts of the ear which are frequently seen in earprints are: helix; anti-helix; tragus; and anti-tragus, while lobe and crus of helix are not so common (Meijerman et al. 2004). Owing to the missing information, it can be debated that earprints present less variability than ear images (Dessimoz and Champod 2008). Also, the amount of pressure can affect the amount of information which has been left behind in the print.

Dessimoz and Champod (2008) hypothesises over the discrimination power of the features in different representations of ear morphology data due to the varying quality of the data. They referred to this discrimination power of the data as *selectivity* and discussed that the data with highest selectivity is of ear images captured under controlled conditions. The rest of the source data in order of diminishing selectivity are: ear image occluded by hair; reference

earprint; ear image taken with a surveillance camera at a distance; and finally an earprint obtained from a crime scene. Note that the traditional biometrics and forensic applications of the ear morphology are at the either end of this selectivity spectrum. Dessimoz et al. did not explain how they arrived at this selectivity ranking. However, we suspect that, in this, the missing parts as well as the pressure deformation are the main reasons for the low selectivity of the earprints. Indeed, there is a concern that not all potentially discriminant parts of the ear are present in an earprint. This leads to the question of what features there are in an ear shape and just how discriminant they are. The findings of ear biometrics studies where occlusion and therefore missing part have been investigated may be of useful to this discussion. Arbab-Zavar and Nixon (2011) have also investigated as to the origin of each part of the ear morphology and its discrimination powers. Ear parts are further discussed in section 1.12.

1.10.4 Statistical Analysis of Performance

So far there has been relatively little analysis of earprint performance for forensic identification. The statistical analysis of performance and error rates corresponding to earprint identification was the focus of the EU-funded project Forensic Ear Identification (FearID) in 2002-2005. In this project, an earprint dataset with 7364 prints from 1229 donors from three counties was acquired (Alberink and Ruifrok 2007). For this three left and three right earprints were gathered for each donor. Also, one or two simulated crime scene prints were taken for one out of 10 donors. A semi-automatic classification method was proposed to compare the prints, and each pair of prints was classified as matching or non-matching. In this, after the earprint were lifted from the surface, first a polyline is drawn manually following the earprint contour, and then connect structures are determined using these polylines. The width and the curvature of these structures is the basis for comparison between the prints. An equal error rate (EER) of 3.9% for comparison of reference prints (per side) and an EER of 9.3% for the comparison of simulated crime scene prints with the reference prints are obtained using this method. Junod et al. (2012) have also experimented with this data. In this, the ear prints are manually segmented and pre-aligned. An earprint model is then computed for each ear (per side) by further aligning the input earprint images of that ear using a multi-resolution registration algorithm and obtaining the superposition of the aligned prints. The same alignment method is then used in testing to compute the similarity between a given earprint and a model earprint. Junod et al. reports a 2.3% EER for the comparison of simulated crime scene prints with the reference prints and a 0.5% EER for the comparison of reference earprints. It should also be noted that in this study some of the poor quality simulated prints have been removed from the dataset. Also the reference prints of the ears which had less than 3 earprint samples are not considered.

1.11 From Earprints to Ear images

The effects of deformation due to pressure and the fact that some components are missing, potentially, causes large intra-individual variation in earprints, resulting in a more challenging recognition problem than ear image recognition. In biometrics, 2D or 3D images of the ear are commonly used. These images are traditionally captured in controlled environments. More recent methods have looked into improving the robustness of the algorithms and easing the

controls over the image capture procedures. With rapid deployment of surveillance cameras, the number of crimes recorded on surveillance footage is also growing fast. These footage are often characterized by poor quality while effects such as occlusion, shadows and noise are commonplace. With further development of biometric approaches towards more robust methods on one hand and the increase of crime scene surveillance footage, which calls for methods of recognition at a distance, on the other, it appears that the two fields are rapidly moving towards each other.

Compared to earprints, the use of ear images for identification has been explored and examined more frequently. Abaza et al. (2013) provides a list of available ear image databases which can be used for ear biometric studies. Some of the most commonly used among these databases are: the UND database (Yan and Bowyer 2005) which includes 2D and 3D images of 415 individuals; XM2VTS database (Messer et al. 1999) comprising of 2D ear images of 295 subjects taken in four time-lapsed sessions; and USTB database (UST 2005) with 500 subjects and with pose variation and partial occlusion. In biometrics, the focus is to design the most effective and robust algorithms to perform identification. Notice that the focus in biometrics has shifted compared to that we have discussed before in forensics. In forensics, the main focus was to determine "the error rates for earprint individualization"; in biometrics, the main focus is to determine "the error rates of a specific algorithm performing ear image recognition". In biometrics, it is presumed that the identification using ear images is a viable task, especially in the relatively small datasets that are considered, and the no upper limit is envisaged for the recognition performance.

The automatic recognition of ear images removes the operator bias, and so long as the probe images are comparable to the training and validation images in terms of overall quality, resolution, occlusion, illumination and pose variations the error rates reported for an algorithm are a good estimate of the reliability of the algorithm's predictions for new data. In this, the size of the validation set compared to the size of potential candidate set is also a factor which needs to be considered. However, determining the required size of the training and validation sets for each recognition problem is an open question. It should also be noted that these methods are often complex and unintuitive. Often it is not possible to point out the differences and similarities between two ear images explicitly. This is unfortunate as such descriptions can be useful for the jury.

1.11.1 Ear biometrics methods

Iannarelli (1989) proposed a method based on 12 measurements taken between a number of landmark points on an ear image. These landmark points were determined manually. An automated method based on similar measurements would primarily rely on accurate positioning and segmentation of the landmarks. This is a challenging task to perform automatically. On the other hand, an automatic analysis of samples can capture a more detailed signature, describing the sample, one which may not be viable to obtain manually. Also, there is the obvious benefit of being able to automatically search within a large dataset of samples. It is worth noting here that even the same ear would appear different, albeit slightly, in different images. Identification is possible when the intra-individual variations are smaller than the inter-individual variations. In other words, identification is possible when the samples from the same individual are more similar to each other than to the samples from other individuals. Therefore in addition to the information content of the individuals the

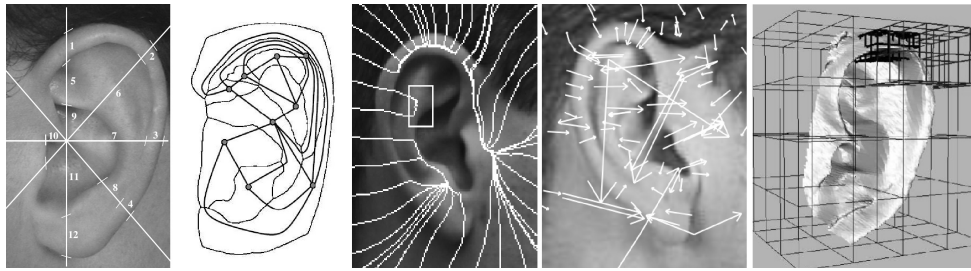


Figure 1.3 From left to right: the Iannarelli's manual measurement system; Burge and Burgers' adjacency graph; Hurley et al.s' force field; Arbab-Zavar and Nixons' keypoints; and Yan and Bowyers' 3D model.

method of calculating the similarity is relevant.

One of the first ear biometric algorithms was introduced by Burge and Burger (1998) in 1998. They modelled each individual ear with an adjacency graph which was calculated from a Voronoi diagram of the ear curves. However, they did not provide an analysis of biometric potential. Hurley et al. (2005) used force field feature extraction to map the ear to an energy field which highlights *potential wells* and *potential channels* as features achieving a recognition rate of 99.2% on a dataset of 252 images from 63 subjects. Naseem et al. (2008) have proposed the use of sparse representation, following its successful application in face recognition. Arbab-Zavar and Nixon (2011) proposed a parts-based model approach which was guided by the biological cues as to the independent parts of the external ear morphology. The ear model was derived by a stochastic clustering on a set of scale invariant features of a training set. The model description was extended by a wavelet-based analysis with a specific aim of capturing information in the ear's boundary structures. A recognition rate of 97.4% was achieved using this method on a dataset of 458 images from 150 individuals. Statistical methods such as PCA, ICA and LDA have also been used in ear biometrics (Chang et al. 2003; Hurley et al. 2005; Zhang et al. 2005; Zhang and Jia 2007). These statistical methods can obtain satisfactory results in controlled environments. However they have almost no invariance properties, thus they rely on the acquisition and pre-processing stages to window and align the data. Figure 1.3 shows the Iannarelli's manual measurements as well as Burge and Burgers' adjacency graph, Hurley et al.s' force field, Arbab-Zavar and Nixons' keypoints and Yan and Bowyers' 3D model.

The 3D structure of the ear has also been exploited, and good results have been obtained (Chen and Bhanu 2007; Passalis et al. 2007; Yan and Bowyer 2007). Yan and Bowyer (2007) captured and segmented the 3D ear images and used Iterative Closest Point (ICP) registration to achieve a 97.8% recognition rate on a database of 415 individuals. Chen and Bhanu (2007) proposed a 3D ear detection and recognition system. Using a local surface descriptor and ICP for recognition, they reported recognition rates of 96.8% and 96.4% on two different data sets. Although using 3D can improve the performance, using 2D images is consistent with deployment in surveillance or other planar image scenarios. A survey of ear biometrics has been recently provided by Abaza et al. (2013).

1.11.2 *Are ear biometrics methods robust?*

One of the main advantages of ear biometrics is that recognition may be made at a distance, such as in surveillance videos. The images captured by a surveillance system are generally of poor quality; they might be partially occluded; the pose might not be the most desired one for identification; while poor illumination and shadows may also deter the image quality. Therefore, the automatic processing of such images requires the use of robust methods.

Bustard and Nixon (2010b) pointed out that, presently, in order to obtain good recognition rates in the area of ear biometrics it is required that the samples be captured under controlled conditions. Moving toward an unconstrained ear recognition method was the main goal of (Bustard and Nixon 2010b). The proposed method includes a registration which computes a homography transform between the probe and gallery images using scale-invariant feature transform (SIFT) point matches. In recognition, a pixel-based distance measure is used to compare the registered and normalized images. The robustness of the method is then tested in presence of pose variation, occlusion, background clutter, resolution, and noise. It has been shown that this method can handle pose variations of up to $\pm 13^\circ$ and occlusions of up to 18%, while also showing good robustness properties in the other tested cases.

Model-based methods are generally more equipped to handle noise and occlusion. Using a localized description is another way of increasing robustness to occlusion. Inevitably, some of the information will be lost as a result of occlusion. However, other measurements can also be affected by the change in the overall appearance. It is these measurements which a localized approach can keep from being spoiled. Arbab-Zavar and Nixon (2011) demonstrated the performance advantages of their hybrid method, including a parts-based model extended by a wavelet-based analysis capturing information in the ears boundary structures, in occlusion. In this, they have compared the performance of their method with a robust PCA (RPCA) as a representative of holistic methods. Figure 1.4 shows the results of this comparison. On test set A, the hybrid method performs better than RPCA for as much as 30% of occlusion. The results on test set C exhibit the degrading effect of less accurate registration, which is obtained automatically, on RPCA. In contrast, the hybrid classification maintains good performance, and clearly outperforms RPCA on test set C. Test set C is also more challenging than test set A in terms of number of individuals and overall image quality. Yuan et al. (2010) proposed a localized approach with high redundancy between the local descriptions. They generated a set of 28 overlapping sub-windows for each image and used neighbourhood-preserving embedding to extract the features for each sub-window. In recognition, a weighted majority voting is used for fusion at decision level.

3D ear images have been used to overcome the difficulties encountered with variations in pose and lighting. Various recognition algorithms have been proposed (Chen and Bhanu 2007; Yan and Bowyer 2007) demonstrating high recognition performances. However, range scanners are required to capture the 3D images. Other methods have been proposed to extract the 3D information of the ear for recognition using a set of 2D images from different poses. Shape from shading (Cadavid and Abdel-Mottaleb 2008) and a B-Spline pose manifold (Zhang and Liu 2008) are two examples of these methods. Similar to the methods which work with range data, the data requirements of these methods also restricts their viability for surveillance scenarios. In a more promising approach, Bustard and Nixon (2010a) proposed a new technique for constructing a 3D morphable model of the face profile and the ear using a single image.

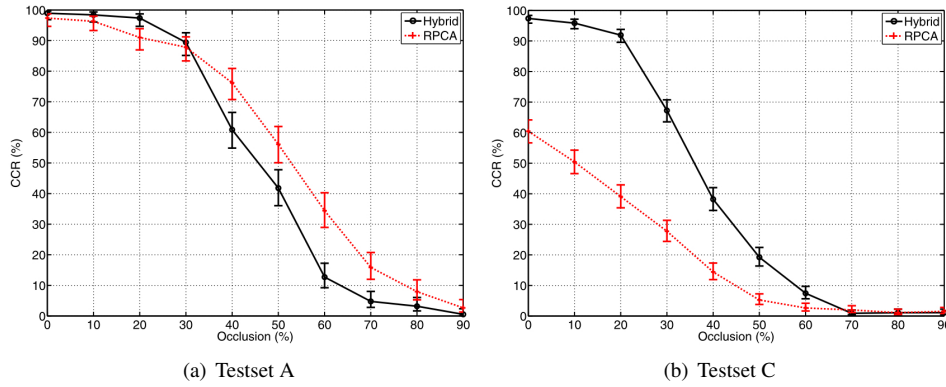


Figure 1.4 The hybrid classifier versus RPCA in occlusion on testsets A and C (from Arbab-Zavar and Nixon (2011)).

1.12 Ear Morphology Features

Perhaps one of the main questions which is encountered in the forensic identification is this question: "is there enough information available to make a positive identification?". Hoogstrate et al. (2001) asked a similar question from two groups of operators: forensic experts and laymen. For this, multiple video captures using standard surveillance equipment were made from 22 subjects under different conditions. A mask was overlaid on the video showing only the ear part. Each participant was presented with 40 sets of paired videos and for each pair they were asked: (1) Is there enough information in the video for individualization or exclusion; and (2) Are the individuals in the two videos the same person? Hoogstrate et al. derived two main conclusions from their experiments: (1) the quality of the video influences the participant's decision of whether they have enough information; and (2) the forensically trained persons were able to determine if they had sufficient information. Note that the dataset for this study was small and the experiment was conducted under closed set assumption. Albeit, this raises an important question of which are the ear's discriminating features and how the performance accuracy and confidence levels are affected when different parts of the ear are not visible.

The significance of various parts of the ear for identification has been rarely studied in the field of ear forensics or ear biometrics. In our earlier work (Arbab-Zavar and Nixon 2011), we have looked into identifying the various parts of the ear morphology and investigate as to their discriminatory powers. This study was guided by accounts of embryonic development of the external ear. The study of ear embryology reveals that the external ear is the result of 6 nodules whose unequal growth and coalescence give the final shape of the external ear. A conclusion was drawn that there should be a limited information redundancy between these parts since they are thought to be developed independently. Therefore missing the information of any of these parts could not be fully recovered by the other visible parts. Some of the information content is thereby lost and our capability to perform identification using this data is weakened.

The separability and variability of ear parts was investigated via two very different

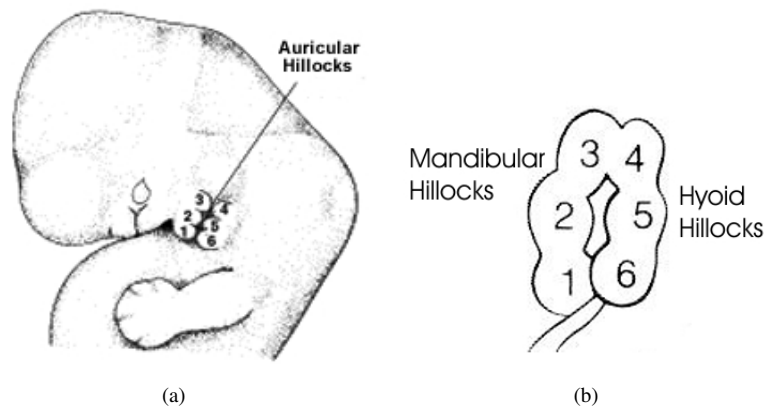


Figure 1.5 (a) The six auricular hillocks in a six week old human embryo (Sadler 2006). (b) Mandibular and Hyoid hillocks (Davis 1987).

approaches. The first approach was based on statistical analysis of shape within a dataset of ears. In this, a part based model was learned from a dataset of ear images. The parts are arbitrary scaled circular neighbourhoods, called the keypoints, which are detected and described via the SIFT descriptor (Lowe 2004). SIFT provides a histogram description of edges within a local area. A parts-based model was then built via clustering of the detected keypoints in different images. The second approach was based on embryonic development of the external ear and the embryological understanding of ear abnormalities. In this, cues from the ear abnormalities were used to hypothesise as to the independent parts of the ear. It was also considered that the most variable parts of the ear are those which are most frequently the site of ear abnormalities. These parts also provide a valuable set of features that can be used to communicate with juries.

The initial appearance of the external ear in the human embryo is in the shape of six individual hillocks occurring in the fifth week of embryonic life (Streeter 1922). Figure 1.5(a) shows a drawing of a six week old embryo with its auricular hillocks numbered. As illustrated in figure 1.5(b), the external ear originates from the tissue of the mandibular and the hyoid arches, which are separated by a cleft, which gives rise to the external auditory canal. It is the unequal growth and coalescence of these six hillocks that gives the shape of the definitive auricle in a newborn baby. This is the reason for our interest in ear embryology – the premise of local and independent structures within the auricle is appealing to the classification purpose.

Streeter (1922), who provided one of the most extensive accounts of external ear embryology, argued against the individual development of the auricular hillocks and suggested that the external ear comes into existence as an intact and continuous structure which elaborates into its final form. However there is a wide range of defects which disturb the smooth continuity of the auricle. These can be best described as the failure of fusion or the lack of correct alignment of the various hillocks, which further insists on the role of separate structures in the formation of the definitive auricle (Davis 1987; Hunter and Yotsuyanagi 2005). Some other malformations can be described as excessive growth beyond,

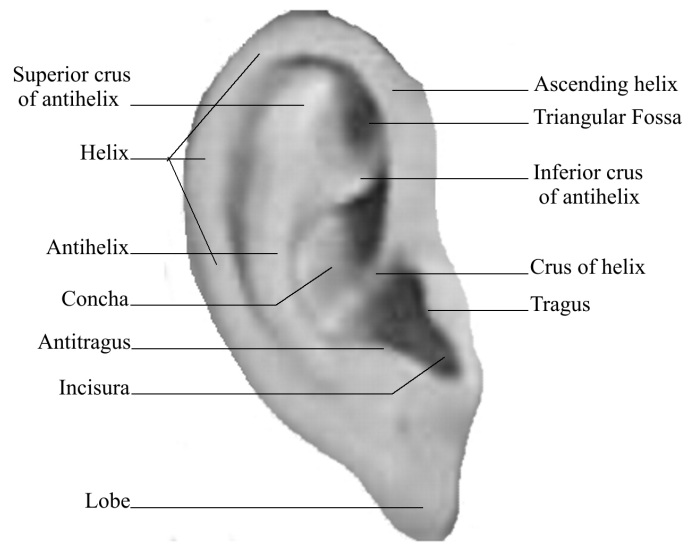


Figure 1.6 The terminology of the ear

or, underdevelopment beneath the thresholds of normality. Thereby the site of such anomaly is also where a considerable variation is introduced; it is unlikely that an abnormality will be observed in locations of more constant structures.

The findings of (Arbab-Zavar and Nixon 2011) have been revisited here with an eye towards earprint identification and the missing parts. Figure 1.6 shows the common terminology of the external ear.

1.12.1 Inferior crus of antihelix and the crus of helix

One of the most noteworthy outcomes of this analysis is regarding two parts the inferior crus of antihelix and the crus of helix. According to Streeter, these two parts are the least variant parts of the ear. Seemingly contradictory, these two parts are also detected as the most significant parts of the ear model. It was discussed in (Arbab-Zavar and Nixon 2011) that this is caused by the models varying capability in detecting the parts. Demonstrating that these parts are the most frequently and accurately detected parts in different ears, it is hypothesized that the comparative consistency of these parts helps with learning them via a clustering method. Therefore not being the most variant part of the ear, and in fact if we go by the Streeter's evaluation of these parts the least variant parts of the ear, become the most significant parts of the ear model. This emphasizes the importance of choosing the algorithm for ear image or ear print comparison. Noting that some of the parts are not detected using the parts- based model. The other reliable and consistent parts are considered as focal point for detecting the other under-presented parts of helix and antihelix. Considering the earprints, it can perhaps be considered fortunate that two of the parts which often do not leave a print are actually the least varying parts of the ear. Thus their absence is least significant.

1.12.2 *Helix, antihelix and scapha*

The outer ear rim, the helix, may be attributed to as many as three out of six embryonic hillocks. Ascending helix, the portion of the helix immediately attached to the crus of helix, is assigned to an individual hillock by Streeter (1922) and Sulik (1995). An anomaly called the *lop ear* is the product of the absence of the ascending helix, while the rest of the parts have their normal shape (Hunter and Yotsuyanagi 2005). Two other defects exhibit conspicuous clefts separating the ascending helix from the rest of the helical components on either side (Davis 1987; Park and Roh 1999). The ascending helix is also detected by the parts model and is the third most significant part of the model. As for the rest of the helix, there are two major hypotheses regarding its formation: suggested by His, the upper and lower helical components, including the helix and antihelix, are derived from hillocks 4 and 5 respectively; while Streeter believes that a single hillock (5th) gave rise to the helix and the antihelix is the product of hillock 4. In accordance with the first hypothesis, the upper helical region appears to be subject to considerable growth variations. Cryptotia and Satyr ear are two anomalies exhibiting underdevelopment of this region (Hunter and Yotsuyanagi 2005). The upper and lower helical regions have been detected as separate parts in the parts-model and are both among the 7 most significant parts of the model. On the other hand, the emergence of the scapha, the concave surface of free portion lying between the antihelix and the helix, provides a margin and allows the helix and antihelix to have some degree of independent development which is better described by Streeter's hypothesis. The antihelix, as mentioned above is subject to variations of the upper helical region, while the lower parts are more constant. Due to the limitation of the circular image descriptor which was the basis local area unit of the model parts, the elongated parts such as the helix and anti-helix were not captured adequately. A specialized representation and method was then applied to capture the variations of the two elongated structures of the helix and anti-helix separately. A recognition rate of 91.9% is achieved with helix and antihelix dominant representation on a dataset with 458 images from 150 individuals (Arbab-Zavar and Nixon 2011). In this the part model obtains an 89.1% recognition rate. The combination of these two methods yields a significant improvement with a 97.4% recognition rate and further suggests that independent information content have been captured by these two methods. Also note that the helix and antihelix dominate the earprint mark. However, the upper antihelix region of the superior and the inferior cruses of antihelix are commonly missing in these prints.

1.12.3 *The lobe*

Lobe is one of the only parts of the ear which lends itself to categorical classification. Three types of lobe are: well-formed; attached; and no lobe. In forensics, ear lobes are used in international standard for identification in Disaster Victim Identification (DVI) 2008. Note also that ear piercing, which is a semi-permanent body modification, was reported by Abbas et al. to occur in 46% of their population sample of 400 adults (Abbas and Rutty 2005). They reported that, in about 95% of the cases with ear piercing, the piercing occurs on the lobe. They noted that the presence or absence of such piercing itself is a useful attribute for forensic identification. The ear lobe is the only part of the ear which is composed of fat rather than cartilage. This part continues to grow and change shape as the person grows older

(Meijerman 2006). Albeit, it could exhibit a variety of shapes, and in a database with a small time lapse between the captured samples it can be comparatively discriminant.

1.12.4 Tragus and antitragus

In Otocephaly, which is a syndrome accompanied by an anomaly of the auricle, the tragus is missing. Other tragal anomalies may exhibit extensions or duplications of the tragus flesh (Hunter and Yotsuyanagi 2005), indicating a rich variation in the shape of this component. In contrast, antitragus has been little discussed in the analyses of ear anomalies. Tragus and antitragus are also commonly found on earprints.

1.12.5 Concha

Concha is the part of the external ear which will almost certainly be missing from the earprint. The depth of this cavity is the main feature of this component. The Mozart ear is characterized by its shallow concha and it was also discussed that there is a correlation between the depth of the concha and the sensitivity of the ear to hearing sounds. However, this feature is also absent in 2D ear images.

1.13 Conclusions

Given that biometrics concerns automatically establishing identity and forensics requires confirmation of identity, it is perhaps surprising that the inclusion of biometrics is not further advanced within the forensic community. For this to be achieved, agreement standards for acceptability needed to be reached and these are relatively new to biometrics. Given its long history, it is no surprise there is a richer literature in identifying subjects from fingerprints and fingerprint biometrics is becoming well established for latent fingerprint recognition. The translation of other biometrics such as face and ear is considerably less advanced.

This chapter has outlined the historical connections between biometrics and forensics and examined the face and ear biometrics in more detail. Face and ear information can be captured easily in images and at a distance. There is a known taxonomy for their description and it is accepted that people can be identified by their face and ears. The development of face and ears is known and their basic patterns are well understood. There is a rich variety of approaches for face and ear biometrics and these are steeped in pattern recognition and computer vision. However, currently there are no generally accepted standards for forensic face comparison. A full and systematic assessment of the automatic face recognition technology must be conducted under realistic conditions before it can be utilised for forensic applications.

On the other hand, for the emerging field of ear biometrics, the challenges exist in introducing this new biometric feature into forensics. Research shows that using ears has similar performance to other biometrics, using similar methods, though the research is as yet not so deep or popular as that for the more established biometrics. As such, ears can then be deployed in scene of crime analysis where images of an ear are available, and the ear has actually already been deployed in this way. The notion that people can be recognised from a latent earprint has a more chequered history. This arises when a subject's ear makes contact with a surface, say for listening in purposes. Naturally, there are problems with image quality as there are for latent fingerprints and the problem is confounded by the absence of

modelling of the change in print with ear deformation, though a combination of 3D shape analysis (which exists for ears) with a 3D plastic membrane could offer understanding in this direction. As it stands, the ear clearly has the potential to be one of the stock of biometrics in digital forensics both for imagery and for recorded prints - and given its proven identification capability it appears well worthy of future study in this respect. It is worth noting that the habituation of suspects to surveillance video has led to a more routine use of concealment of the face and ears and this could be addressed by soft biometrics which is a much newer to the research area (Reid et al. 2013).

References

- Abaza A, Ross A, Hebert C, Harrison MAF and Nixon MS 2013 A survey on ear biometrics. *ACM Computing Surveys*.
- Abbas A and Rutty GN 2005 Ear piercing affects earprints: the role of ear piercing in human identification. *Journal of Forensic Sciences* **50**(2), 386–392.
- Alberink I and Ruifrok A 2007 Performance of the fearid earprint identification system. *Forensic Science International* **166**, 145–154.
- Ali T, Veldhuis RNJ and Spreeuwens LJ 2010 Forensic face recognition: A survey. Technical Report TR-CTIT-10-40, Centre for Telematics and Information Technology University of Twente, Enschede.
- Arbab-Zavar B and Nixon MS 2011 On guided model-based analysis for ear biometrics. *Computer Vision and Image Understanding* **115**(4), 487–502.
- Aulsebrook W, Iscan M, Slabbert J and Becker P 1995 Superimposition and reconstruction in forensic facial identification: a survey. *Forensic Science International* **75**(2-3), 101 – 120.
- Belhumeur P, Hespanha J and Kriegman D 1997 Eigenfaces vs. fisherfaces: recognition using class specific linear projection. *Pattern Analysis and Machine Intelligence, IEEE Transactions on* **19**(7), 711 –720.
- Bertillon A 1890 *La photographie judiciaire, avec un appendice sur la classification et l'identification anthropométriques*. Gauthier-Villars, Paris.
- Bertillon A 1893 *Identification anthropométrique; instructions signalétiques*. Impr. administrative, Melun.
- Bouchrika I, Goffredo M, Carter J and Nixon M 2011 On using gait in forensic biometrics. *Journal of Forensic Sciences* **56**(4), 882–889.
- Burge M and Burger W 1998 Ear biometrics In *Biometrics: Personal Identification in a Networked Society* (ed. Jain A, Bolle R and Pankanti S) Kluwer Academic pp. 273–286.
- Bustard J and Nixon M 2010a 3d morphable model construction for robust ear and face recognition *Computer Vision and Pattern Recognition (CVPR), 2010 IEEE Conference on*, pp. 2582–2589.
- Bustard J and Nixon M 2010b Toward unconstrained ear recognition from two-dimensional images. *Systems, Man and Cybernetics, Part A: Systems and Humans, IEEE Transactions on* **40**(3), 486–494.
- Cadavid S and Abdel-Mottaleb M 2008 3-d ear modeling and recognition from video sequences using shape from shading. *Information Forensics and Security, IEEE Transactions on* **3**(4), 709–718.
- Champod C 2000 Encyclopedia of forensic sciences *Identification/Individualization: Overview and Meaning of ID* Academic Press.
- Champod C, Evett IW and Kuchler B 2001 Earmarks as evidence: a critical review. *Journal of forensic sciences* **46**(6), 1275–1284.
- Chan H and Bledsoe W 1965 A man-machine facial recognition system: Some preliminary results *Technical Report*.
- Chang K, Bowyer K, Sarkar S and Victor B 2003 Comparison and combination of ear and face images in appearance-based biometrics. *Pattern Analysis and Machine Intelligence, IEEE Transactions on* **25**(9), 1160–1165.
- Chen H and Bhanu B 2007 Human ear recognition in 3d. *Pattern Analysis and Machine Intelligence, IEEE Transactions on* **29**(4), 718–737.
- Cole SA 2009 Forensics without uniqueness, conclusions without individualization: the new epistemology of forensic identification. *Law, Probability and Risk* **8**(3), 233–255.
- Comcowich G 2013 Remarks of special agent in charge richard deslauriers at press conference on bombing investigation. <http://www.fbi.gov/boston/news-and-outreach/press-room/2013-press-releases/>.
- Cootes T, Edwards G and Taylor C 1998 Active appearance models In *Computer Vision – ECCV'98* (ed. Burkhardt H and Neumann B) vol. 1407 of *Lecture Notes in Computer Science* Springer Berlin Heidelberg pp. 484–498.
- Cootes T, Taylor C, Cooper D and Graham J 1995 Active shape models-their training and application. *Computer Vision and Image Understanding* **61**(1), 38 – 59.
- Daubert v. Merrell Dow Pharmaceuticals 1993 (92-102), 509 U.S. 579.
- Davis J 1987 Surgical embryology *Aesthetic and reconstructive otoplasty* Springer Verlag New York pp. 93–125.

- Dessimoz D and Champod C 2008 Linkages between biometrics and forensic science In *Handbook of Biometrics* (ed. Jain A, Flynn P and Ross A) Springer US pp. 425–459.
- Faulds H 1880 On the skin-furrows of the hand. *Nature* **22**(574), 605.
- Frye v. United States 1923 293 F. 1013 (D.C. Cir 1923).
- Geng X, Zhou ZH and Smith-Miles K 2007 Automatic age estimation based on facial aging patterns. *Pattern Analysis and Machine Intelligence, IEEE Transactions on* **29**(12), 2234–2240.
- Georghiades AS, Belhumeur PN and Kriegman DJ 2001 From few to many: Illumination cone models for face recognition under variable lighting and pose. *Pattern Analysis and Machine Intelligence, IEEE Transactions on* **23**(6), 643–660.
- Guan Y and Li CT 2013 A robust speed-invariant gait recognition system for walker and runner identification *Biometrics (ICB), 2013 International Conference on*, pp. 1–8.
- Guan Y, Wei X, Li CT, Marcialis GL, Roli F and Tistarelli M 2013 Combining gait and face for tackling the elapsed time challenges *IEEE International Conference on Biometrics: Theory, Applications, and Systems (BTAS)*.
- Guo G, Fu Y, Dyer C and Huang T 2008 Image-based human age estimation by manifold learning and locally adjusted robust regression. *Image Processing, IEEE Transactions on* **17**(7), 1178–1188.
- Hoogstrate AJ, den Heuvel HV and Huyben E 2001 Ear identification based on surveillance camera images. *Science & Justice* **41**(3), 167–172.
- Hunter AGW and Yotsuyanagi T 2005 The external ear: More attention to detail may aid syndrome diagnosis and contribute answers to embryological questions. *American journal of medical genetics* **135A**, 237–250.
- Hurley DJ, Nixon MS and Carter JN 2005 Force field feature extraction for ear biometrics. *Computer Vision and Image Understanding* **98**, 491–512.
- Iannarelli A 1989 *Ear Identification*. Paramount Publishing Company, Freemont, California.
- Ibañez O, Cordon O, Damas S and Santamaria J 2011 Modeling the skull-face overlay uncertainty using fuzzy sets. *Fuzzy Systems, IEEE Transactions on* **19**(5), 946–959.
- International Criminal Police Organization INTERPOL 2008 Disaster victim identification. <http://www.interpol.int/Public/DisasterVictim/Default.asp>.
- Iwama H, Muramatsu D, Makihara Y and Yagi Y 2012 Gait-based person-verification system for forensics *Biometrics: Theory, Applications and Systems (BTAS), 2012 IEEE Fifth International Conference on*, pp. 113–120.
- Jain A, Klare B and Park U 2011 Face recognition: Some challenges in forensics *Automatic Face Gesture Recognition and Workshops (FG 2011), 2011 IEEE International Conference on*, pp. 726–733.
- Junod S, Pasquier J and Champod C 2012 The development of an automatic recognition system for earmark and earprint comparisons. *Forensic Science International* **222**, 170–178.
- Kanade T 1973 Picture processing system by computer complex and recognition of human faces *doctoral dissertation, Kyoto University*.
- Klare B and Jain A 2010 Heterogeneous face recognition: Matching nir to visible light images *Pattern Recognition (ICPR), 2010 20th International Conference on*, pp. 1513–1516.
- Klare B, Li Z and Jain A 2011 Matching forensic sketches to mug shot photos. *Pattern Analysis and Machine Intelligence, IEEE Transactions on* **33**(3), 639–646.
- Klare BF and Jain AK 2013 Heterogeneous face recognition using kernel prototype similarities. *Pattern Analysis and Machine Intelligence, IEEE Transactions on* **35**(6), 1410–1422.
- Klontz JC and Jain AK 2013 A case study on unconstrained facial recognition using the boston marathon bombings suspects. *Technical Report MSU-CSE-13-4*.
- Lanitis A, Taylor C and Cootes T 2002 Toward automatic simulation of aging effects on face images. *Pattern Analysis and Machine Intelligence, IEEE Transactions on* **24**(4), 442–455.
- Lei Z and Li S 2009 Coupled spectral regression for matching heterogeneous faces *Computer Vision and Pattern Recognition, 2009. CVPR 2009. IEEE Conference on*, pp. 1123–1128.
- Li Z, Park U and Jain A 2011 A discriminative model for age invariant face recognition. *Information Forensics and Security, IEEE Transactions on* **6**(3), 1028–1037.
- Liao S, Jain A and Li S 2013 Partial face recognition: Alignment-free approach. *Pattern Analysis and Machine Intelligence, IEEE Transactions on* **35**(5), 1193–1205.
- Lowe DG 2004 Distinctive image features from scale-invariant keypoints. *International Journal of Computer Vision* **60**(2), 91–110.
- Meijerman L 2006 *Inter- and intra individual variation in earprints* PhD thesis Department of Anatomy and Embryology, Leiden University.
- Meijerman L, Sholl S, Conti FD, Giacon M, van der Lugt C, Drusini A, Vanezis P and Maat G 2004 Exploratory study on classification and individualisation of earprints. *Forensic Science International* **140**, 91–99.
- Messer K, Matas J, Kittler J, Luetttin J and Maitre G 1999 XM2VTSDB: The extended M2VTS database *Second International Conference on Audio and Video-based Biometric Person Authentication (AVBPA)*, Washington D.C.
- Meuwly D 2012 The use of biometric information in forensic practice.

- Naseem I, Togneri R and Bennamoun M 2008 Sparse representation for ear biometrics In *Advances in Visual Computing* (ed. Bebis G, Boyle R, Parvin B, Koracin D, Remagnino P, Porikli F, Peters J, Klosowski J, Arns L, Chun Y, Rhyne TM and Monroe L) vol. 5359 of *Lecture Notes in Computer Science* Springer Berlin Heidelberg pp. 336–345.
- Pankanti S, Prabhakar S and Jain A 2002 On the individuality of fingerprints. *Pattern Analysis and Machine Intelligence, IEEE Transactions on* **24**(8), 1010–1025.
- Park C and Roh TS 1999 Congenital upper auricular detachment. *Plastic and Reconstructive Surgery* **104**(2), 488–490.
- Park U and Jain A 2010 Face matching and retrieval using soft biometrics. *Information Forensics and Security, IEEE Transactions on* **5**(3), 406–415.
- Passalis G, Kakadiaris IA, Theoharis T, Toderici G and Papaioannou T 2007 Towards fast 3d ear recognition for real-life biometric applications *Advanced Video and Signal Based Surveillance, 2007. AVSS 2007. IEEE Conference on*, pp. 39–44.
- Penev PS and Atick JJ 1996 Local feature analysis: a general statistical theory for object representation. *Network: Computation in Neural Systems* **7**(3), 477–500.
- Phillips P, Scruggs W, O'Toole A, Flynn P, Bowyer K, Schott C and Sharpe M 2010 Frvt 2006 and ice 2006 large-scale experimental results. *Pattern Analysis and Machine Intelligence, IEEE Transactions on* **32**(5), 831–846.
- Porter G and Doran G 2000 An anatomical and photographic technique for forensic facial identification. *Forensic science international* **114**(2), 97–105.
- R. v. Clarke 1995 2 Cr. App. R. 425.
- R. v. Kempster 2008 EWCA Crim 975.
- R. v. Mark Dallagher 2002 EWCA Crim 1903.
- Reid D, Nixon M and Stevenage S 2013 Soft biometrics; human identification using comparative descriptions. *Pattern Analysis and Machine Intelligence, IEEE Transactions on* (in press).
- Romdhani S, Blanz V and Vetter T 2002 Face identification by fitting a 3d morphable model using linear shape and texture error functions In *Computer Vision – ECCV 2002* (ed. Heyden A, Sparr G, Nielsen M and Johansen P) vol. 2353 of *Lecture Notes in Computer Science* Springer Berlin Heidelberg pp. 3–19.
- Roweis ST and Saul LK 2000 Nonlinear dimensionality reduction by locally linear embedding. *Science* **290**(5500), 2323–2326.
- Rutty GN, Abbas A and Crossling D 2005 Could earprint identification be computerised? an illustrated proof of concept paper. *International Journal of Legal Medicine* **119**(6), 335–343.
- Sadler TW 2006 *Langman's medical embryology* tenth edn. Lippincott Williams & Wilkins.
- Saks MJ and Koehler JJ 2005 The coming paradigm shift in forensic identification science. *Science* **309**(5736), 892–895.
- Sinha P, Balas B, Ostrovsky Y and Russell R 2006 Face recognition by humans: Nineteen results all computer vision researchers should know about. *Proceedings of the IEEE* **94**(11), 1948–1962.
- Spaun N 2011 Face recognition in forensic science In *Handbook of Face Recognition* (ed. Li SZ and Jain AK) Springer London pp. 655–670.
- Spaun NA 2007 Forensic biometrics from images and video at the federal bureau of investigation *Biometrics: Theory, Applications, and Systems, 2007. BTAS 2007. First IEEE International Conference on*, pp. 1–3.
- State v. David Wayne Kunze 1999 Court of Appeals of Washington, Division 2. 97 Wash.App. 832, 988 P.2d 977.
- State v. Polite 1985 No. 84-525 (14th Judicial Circuit, Fla. Jun. 10, 1985).
- Streeter GL 1922 Development of the auricle in the human embryo. *Contribution to Embryology* (69), 111–139.
- Sulik KK 1995 Embryology of the ear In *Hereditary hearing loss and its syndromes* (ed. Gorlin RJ, Toriello HV and Cohen MM) Oxford University Press pp. 22–42.
- Tan X, Chen S, Zhou ZH and Liu J 2009 Face recognition under occlusions and variant expressions with partial similarity. *Information Forensics and Security, IEEE Transactions on* **4**(2), 217–230.
- Tang X and Wang X 2004 Face sketch recognition. *Circuits and Systems for Video Technology, IEEE Transactions on* **14**(1), 50–57.
- Turk M and Pentland A 1991 Face recognition using eigenfaces *Computer Vision and Pattern Recognition, 1991. Proceedings CVPR '91., IEEE Computer Society Conference on*, pp. 586–591.
- USA v. Byron Mitchell 1999 Criminal Action No. 96-407, US District Court for the Eastern District of Pennsylvania.
- UST 2005 University of science and technology beijing ustb database. <http://www1.ustb.edu.cn/resb/en/index.htm>.
- Van der Lugt C 2001 *Earprint Identification*. Elsevier Bedrijfsinformatiem, Gravenhage.
- Wagner A, Wright J, Ganesh A, Zhou Z, Mobahi H and Ma Y 2012 Toward a practical face recognition system: Robust alignment and illumination by sparse representation. *Pattern Analysis and Machine Intelligence, IEEE Transactions on* **34**(2), 372–386.
- Wang X and Tang X 2009 Face photo-sketch synthesis and recognition. *Pattern Analysis and Machine Intelligence, IEEE Transactions on* **31**(11), 1955–1967.
- Wei X, Li CT and Hu Y 2012 Robust face recognition under varying illumination and occlusion considering structured sparsity *Digital Image Computing Techniques and Applications (DICTA), 2012 International Conference on*, pp. 1–7.

- Wei X, Li CT and Hu Y 2013 Face recognition with occlusion using dynamic image-to-class warping (dicw) *Automatic Face and Gesture Recognition (FG), 2013 10th IEEE International Conference and Workshops on*, pp. 1–6.
- Wiskott L, Fellous JM, Kuiger N and Von der Malsburg C 1997 Face recognition by elastic bunch graph matching. *Pattern Analysis and Machine Intelligence, IEEE Transactions on* **19**(7), 775–779.
- Wright J, Yang A, Ganesh A, Sastry S and Ma Y 2009 Robust face recognition via sparse representation. *Pattern Analysis and Machine Intelligence, IEEE Transactions on* **31**(2), 210–227.
- Yan P and Bowyer K 2005 A fast algorithm for icp-based 3d shape biometrics *Automatic Identification Advanced Technologies, 2005. Fourth IEEE Workshop on*, pp. 213–218.
- Yan P and Bowyer K 2007 Biometric recognition using 3d ear shape. *Pattern Analysis and Machine Intelligence, IEEE Transactions on* **29**(8), 1297–1308.
- Yuan L, Wang Z and Mu Z 2010 Ear recognition under partial occlusion based on neighborhood preserving embedding *SPIE, Biometric Technology for Human Identification VII*.
- Zhang HJ, Mu ZC, Qu W, Liu LM and Zhang CY 2005 A novel approach for ear recognition based on ica and rbf network *Machine Learning and Cybernetics, 2005. Proceedings of 2005 International Conference on*, vol. 7, pp. 4511–4515 Vol. 7.
- Zhang W, Wang X and Tang X 2010 Lighting and pose robust face sketch synthesis In *Computer Vision – ECCV 2010* (ed. Daniilidis K, Maragos P and Paragios N) vol. 6316 of *Lecture Notes in Computer Science* Springer Berlin Heidelberg pp. 420–433.
- Zhang X and Jia Y 2007 Symmetrical null space LDA for face and ear recognition. *Neurocomputing* **70**, 842–848.
- Zhang Z and Liu H 2008 Multi-view ear recognition based on b-spline pose manifold construction *Intelligent Control and Automation, 2008. WCICA 2008. 7th World Congress on*, pp. 2416–2421.
- Zhao W, Chellappa R, Phillips PJ and Rosenfeld A 2003 Face recognition: A literature survey. *ACM Computing Surveys* **35**(4), 399–458.