

RESEARCH ARTICLE

Viral Infection of Human Lung Macrophages Increases PDL1 Expression via IFN β

Karl J. Staples^{1*}, Ben Nicholas¹, Richard T. McKendry¹, C. Mirella Spalluto¹, Joshua C. Wallington¹, Craig W. Bragg¹, Emily C. Robinson¹, Kirstin Martin¹, Ratko Djukanović^{1,2}, Tom M. A. Wilkinson^{1,2}

1 Academic Unit of Clinical and Experimental Sciences, University of Southampton Faculty of Medicine, Sir Henry Wellcome Laboratories, Southampton General Hospital, Southampton, United Kingdom,

2 Southampton NIHR Respiratory Biomedical Research Unit, Southampton General Hospital, Southampton, United Kingdom

* k.staples@southampton.ac.uk



OPEN ACCESS

Citation: Staples KJ, Nicholas B, McKendry RT, Spalluto CM, Wallington JC, Bragg CW, et al. (2015) Viral Infection of Human Lung Macrophages Increases PDL1 Expression via IFN β . PLoS ONE 10(3): e0121527. doi:10.1371/journal.pone.0121527

Academic Editor: Dennis W Metzger, Albany Medical College, UNITED STATES

Received: December 9, 2014

Accepted: February 3, 2015

Published: March 16, 2015

Copyright: © 2015 Staples et al. This is an open access article distributed under the terms of the [Creative Commons Attribution License](https://creativecommons.org/licenses/by/4.0/), which permits unrestricted use, distribution, and reproduction in any medium, provided the original author and source are credited.

Data Availability Statement: All relevant data are within the paper and its Supporting Information files.

Funding: This work was part funded by a project grant from Asthma UK (08/026) and the British Medical Association HC Roscoe Award 2013 to KJS. RTM was funded by a Medical Research Council 4-year studentship. The funders had no role in study design, data collection and analysis, decision to publish, or preparation of the manuscript.

Competing Interests: Dr. Staples has read the journal's policy and the authors of this manuscript have the following competing interests: KJS, BLN,

Abstract

Lung macrophages are an important defence against respiratory viral infection and recent work has demonstrated that influenza-induced macrophage PDL1 expression in the murine lung leads to rapid modulation of CD8+ T cell responses via the PD1 receptor. This PD1/PDL1 pathway may downregulate acute inflammatory responses to prevent tissue damage. The aim of this study was to investigate the mechanisms of PDL1 regulation by human macrophages in response to viral infection. *Ex-vivo* viral infection models using influenza and RSV were established in human lung explants, isolated lung macrophages and monocyte-derived macrophages (MDM) and analysed by flow cytometry and RT-PCR. Incubation of lung explants, lung macrophages and MDM with X31 resulted in mean cellular infection rates of 18%, 18% and 29% respectively. Viral infection significantly increased cell surface expression of PDL1 on explant macrophages, lung macrophages and MDM but not explant epithelial cells. Infected MDM induced IFN γ release from autologous CD8+ T cells, an effect enhanced by PDL1 blockade. We observed increases in PDL1 mRNA and IFN β mRNA and protein release by MDM in response to influenza infection. Knockdown of IFN β by siRNA, resulted in a 37.5% reduction in IFN β gene expression in response to infection, and a significant decrease in PDL1 mRNA. Furthermore, when MDM were incubated with IFN β , this cytokine caused increased expression of PDL1 mRNA. These data indicate that human macrophage PDL1 expression modulates CD8+ cell IFN γ release in response to virus and that this expression is regulated by autologous IFN β production.

Introduction

The optimal immune response to respiratory viral infections requires a coordinated and balanced response from an array of innate and adaptive responses. Although the influenza virus primarily infects the respiratory epithelium, this virus can also infect and replicate in human alveolar macrophages[1–3]. Macrophages are not only a key line of defence in the respiratory

RD and TMAW have applied for a patent for the explant infection model (PCT/GB2010/050821 "Ex Vivo Modelling of Therapeutic Interventions"). RD is a co-founder and holds shares in Synairgen Plc. These interests do not alter the authors' adherence to PLOS ONE policies on sharing data and materials. The remaining authors declare no conflict of interest.

tract, responsible for phagocytosis and clearance of infectious organisms but are also orchestrators of the adaptive immune response through presentation of antigen and by the cytokines they release[4,5]. Direct infection of airway macrophages has been postulated as a key mechanism in the development of secondary bacterial infection of the airway leading to consequent pneumonia as described in 1918 influenza pandemic cases[3]. It has also been hypothesised that the mortality associated with novel strains of influenza (e.g. H5N1), is due to increases in macrophage cytokine release[6] highlighting a key role in the control of the inflammatory response.

Recent studies have suggested that macrophage expression of Programmed Death Ligand (PDL)-1 is important in regulating T cell responses to influenza infection[7]. PDL1 is the ligand for the Programmed Cell Death (PD) receptor 1, which is a member of the CD28 family of T cell receptors with CD80 and CD86 being ligands for CD28. In the standard model of T cell receptor (TCR) activation, activation of CD28 provides a necessary co-stimulation to prevent T cell anergy[8]. In contrast, binding of PDL1 to PD1 causes inhibition of TCR-mediated phosphatidylinositol-3-kinase (PI3Kinase) activation leading to inhibition of T cell proliferation and cytokine release[9]. The increased expression and activation of the PD1/PDL1 axis in chronic viral infections such as HIV and Hepatitis C (HCV) can lead to progressive loss of T cell function[10,11]. However, it was only recently that a role for this PD1/PDL1 pathway has been elucidated in the control of immune function in acute infections and increased PDL1 expression in response to pathogens was demonstrated to be crucial for impairment of CD8 cytotoxicity[7] and the development of regulatory T cells[12]. We have recently demonstrated that CD4 cytotoxic T cells play an important role in protecting against severe influenza infection. This work demonstrated an additional role for MHC class II expressing cells and T helper cell responses[13] highlighting the potential importance of macrophage-T cell interactions in the control of influenza infection.

Whilst PDL1 expression has been shown to be increased on human airway macrophages in response to respiratory viral infections[7], the mechanisms of the expression of this ligand on macrophages in response to influenza has not been fully elucidated. Therefore we used a validated *ex vivo* human lung model of influenza infection[14], where we have demonstrated infection of resected lung tissue using immunohistochemistry and flow cytometry, by the expression of viral nucleoprotein (NP)-1[14]. In this *ex vivo* model we have observed NP1 positivity only in epithelial cells and macrophages suggesting that these are the two major cell types for which the virus has tropism. In addition to explant tissue we have used lung macrophages and monocyte-derived macrophages (MDM)[15,16] to further explore the effects of influenza infection on macrophage expression of PDL1.

Materials and Methods

Ethics

The collection of lung tissue and blood was approved by and performed in accordance with the ethical standards of the Southampton and South West Hampshire Research Ethics Committee (LREC no: 09/H0504/109 for tissue and 08/H0504/138 for blood). Written informed consent was obtained from all participants.

Ex vivo infection of lung parenchymal tissue

Resected human lung tissue was obtained from patients undergoing airway re-section surgery at our regional thoracic surgical unit. *Ex vivo* infection of resected lung tissue was carried out as previously described[14].

Lung macrophage isolation

Parenchymal tissue, distant from the resection margin and any gross pathology, was dissected from the lobe and stored briefly in PBS (maximum 30 min) during transport to the laboratory and macrophages were isolated according to previously published protocols[38].

Monocyte Isolation & differentiation

Monocytes were isolated from human peripheral blood mononuclear cells (PBMC) and differentiated into macrophages as previously described[17].

Isolation of CD8+ T cells

CD8+ T cells were isolated from the monocyte-depleted PBMC suspension using CD8+ microbeads (Miltenyi-Biotec, Bisley, UK) according to the manufacturer's instructions. CD8+ T cells that resulted from this separation step were frozen at -80°C in 10% (v/v) DMSO/HI-FBS for use in later ELISpot analysis.

Infection of lung macrophages and MDMs

Influenza A virus strain X31 was supplied at a concentration of 4×10^7 pfu/ml (a kind gift of 3VBiosciences). Inactivated virus (UVX31) was prepared by exposure of the X31 to an ultra-violet (UV) light source for 2 h. Macrophages were incubated for 2 h with no virus, or 4000 pfu (lung) or 500 pfu (MDM) of X31 or UVX31. Cells were then washed and incubated for a further 22 h at 37°C , 5% CO_2 . Supernatants were harvested for cytokine analysis, HA shedding and LDH assays. Cells were collected using non-enzymatic cell dissociation solution (Sigma, Poole, UK) for immediate flow cytometry analysis or lysed and stored at -80°C for RNA analysis.

A similar method was used to infect MDM with Respiratory Syncytial Virus (RSV—strain M37—Meridian Life Science Inc, Memphis, USA). Inactivated RSV (UV-RSV) was prepared by exposure of the X31 to an ultra-violet (UV) light source for 2 h. 500 μl of stock RSV (3.5×10^6 pfu) was diluted 1:1 in basal RPMI; and a 1:10 dilution was made in each well and incubated for 2 h at 37°C . MDMs were then washed with basal RPMI and cultured in RS RPMI for a further 22 h.

Flow cytometry analysis

Samples were resuspended in FACS buffer (PBS, 0.5% w/v BSA, 2 mM EDTA) containing 2 mg/ml human IgG before being incubated on ice in the dark for 30 min in the presence of fluorescently-labelled antibodies or isotype controls (all BD Biosciences, Oxford, UK). Intracellular staining for viral nucleoprotein (NP)-1, was performed using BD Cytofix/Cytoperm kit according to manufacturer's instructions, and AlexaFluor 488 (AF488)-conjugated anti-NP1 antibody (HB-65, a kind gift of 3VBiosciences). Flow cytometric analysis was performed on a FACSAria using FACSDiva software v5.0.3 (all BD).

ELISpot

MDM were either not infected, or were treated with 2.5×10^4 pfu/ml X31 Influenza A H3N2 virus at 37°C for 2 h prior to loading on a 1-DIK antibody (MabTech, Stockholm, Sweden) coated 0.45 μm MultiScreen-IP Filter Plates (Millipore, Watford, UK) at a concentration of 5×10^4 MDM/well. 2.5×10^5 monocyte-depleted PBMC or 1×10^5 CD8+ T cells were then added to MDM-containing wells in the presence or absence of anti-PDL1 or isotype control antibodies (10 $\mu\text{g}/\text{ml}$ —eBiosciences) and incubated at 37°C for a further 22 h. ELISpot was then carried

out according to manufacturer's instructions (MabTech). In initial experiments, no IFN γ staining was seen in wells containing infected MDM or lymphocytes alone (data not shown). Peripheral blood T cells do not appear to be infected when exposed to X31 ([S3 Fig.](#)).

siRNA experiments

After isolation, monocytes were cultured in GM-CSF media as described above for 11 d before cells were washed with basal RPMI. One hundred microliters of GM-CSF media was added to the cultures before incubating with 50 nM scrambled siRNA or siRNA specific to IFN β using 6 μ l HiPerFect (Qiagen, Manchester, UK) for 24 h in GM-CSF media. MDM were subsequently infected with influenza as previously described and IFN β and PDL1 mRNA expression were analysed using RT-PCR.

RNA Isolation & RT-PCR

RNA was extracted from macrophages using a Stratagene Microprep Kit. Reverse transcription was carried out using a nanoScript Reverse Transcriptase kit and PCR amplifications for cytokine gene expression (*IFN α* , *IFN β* , *IFN γ* , *IL10*, *PDL1*) were performed. Gene expression was normalized to β_2 -microglobulin gene expression and quantified using the $\Delta\Delta C_T$ method.

Supernatant analyses

IFN β concentrations in culture supernatants were measured by ELISA according to the manufacturer's instructions (MSD, Gaithersburg, USA). Culture supernatants were analysed by Luminex assay as per manufacturer's instructions (Bio-Rad). LDH release was measured using CytoTox 96 Non-Radioactivity Cytotoxicity Assay according to the manufacturer's instructions (Promega, Southampton, UK). Release of viral hemagglutinin was measured using a dot blot assay on nitrocellulose membrane detected using a rabbit polyclonal anti-influenza serum. The bound rabbit antibodies were detected using the Bio-Rad anti-Rabbit HRP detection system according to the manufacturer's instructions.

Statistics

Statistical analyses were performed using a paired Student's t-test (GraphPad Prism v6, GraphPad Software Inc., San Diego, USA). Results were considered significant if $p < 0.05$.

For a full description of all the methods used please see [S1 Methods](#).

Results

Influenza infection of lung explants increases macrophage PDL1 expression

Using the flow cytometry gating strategy we optimised for detection of epithelial cells (EpCAM+) and macrophages (CD45+HLA-DR+—[Fig. 1](#)) in the lung explants we quantified the percentage of cells that expressed NP1 in each of these cell types. Approximately 32% of macrophages expressed NP1, as did a mean of 16% of epithelial cells ([Fig. 2A & B](#)). This staining was specific to infection and viral replication and not just uptake or binding of the virus to the cell surface, as NP1 staining was not increased above baseline when tissue was incubated with UV-irradiated virus ([Fig. 2A & B](#)).

In the same samples we could also analyse the epithelial and macrophage PDL1 expression induced by influenza infection. Prior to infection PDL1 expression was broadly expressed by all the cells in both populations as assessed by comparison to isotype control staining. Macrophages expressed more than double the amount of PDL1 (specific mean fluorescence intensity

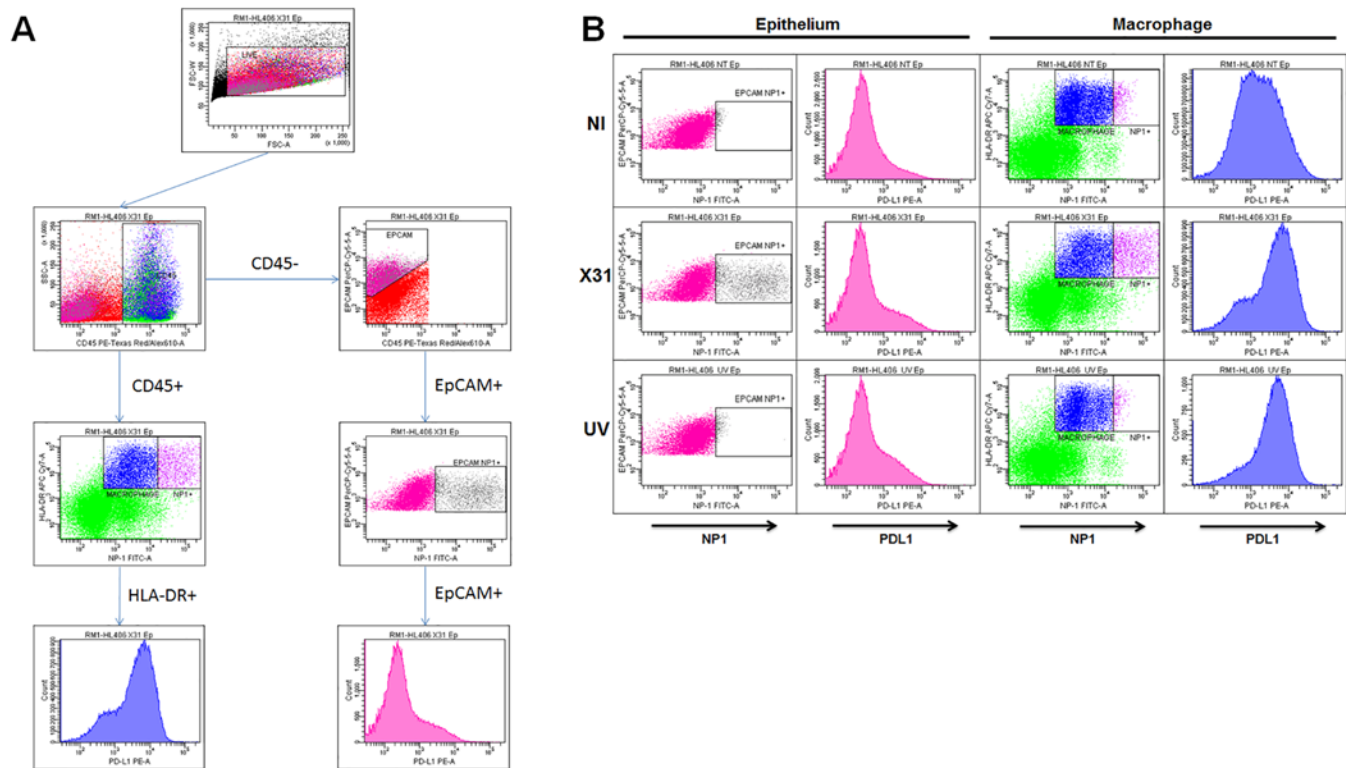


Fig 1. Ex vivo infection of human lung explants. After resting explanted lung tissue overnight, 1×10^6 pfu/ml H3N2 X31 influenza virus or a UV-irradiated aliquot of virus (UVX31) was added for 2 h. After washing, media was replaced and the tissue was incubated for a further 22 h followed by collagenase digestion and flow cytometry analysis **A**) Gating strategy for identification of CD45+HLADR+ macrophages and CD45-EpCAM+ epithelial cells expressing viral NP1 and PDL1 from lung tissue. **B**) FACS plots demonstrating increases in influenza infection (NP1) with corresponding increases in PDL1 expression. Plots are representative of nine independent experiments.

doi:10.1371/journal.pone.0121527.g001

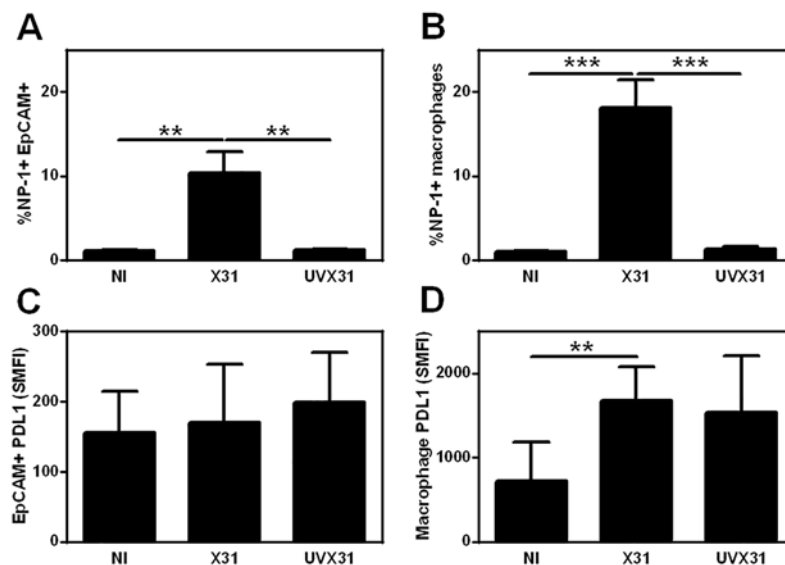


Fig 2. Quantification of infection of human lung explants. Histograms showing flow cytometry data of viral NP1 (% cells) and PDL1 expression (specific mean fluorescence intensity—SMFI) in epithelial cells (**A** & **C**) and macrophages (**B** & **D**). Data are expressed as means \pm SE of 9 independent experiments. Data analysed using a paired t-test ** $p < 0.01$. *** $p < 0.0001$.

doi:10.1371/journal.pone.0121527.g002

(SMFI 255) compared to epithelial cells (SMFI 102). Upon exposure to virus there was no significant increase in epithelial PDL1 expression (Fig. 1B & 2C). In contrast there was a significant increase in PDL1 expression by macrophages infected with X31 and cells exposed to the UV-inactivated virus (Fig. 1B & 2D).

Isolated lung macrophages also express PD-L1 in response to X31 infection

To further assess whether this increase in PDL1 expression was due to the tissue milieu or specific to macrophage infection alone, we infected lung macrophages washed out of resected tissue and isolated cells using adherence to plastic. Using non-infected (NI) cells to set a gate for detection of >1% we observed significant numbers of lung macrophages (mean 18%) expressing NP1 compared to both NI and cells exposed to UV-inactivated virus (UVX31—mean 1.7%—Fig. 3A). Infection of the macrophages also caused a significant increase in macrophage activation as assessed by cell surface expression of HLA-DR (Fig. 3B).

In contrast to explant macrophages, prior to infection, isolated lung macrophages expressed little or no PDL1, suggesting that basal PDL1 expression is sustained by the tissue microenvironment. Despite this low basal expression, PDL1 could still be significantly increased in response to live virus but not to UVX31 (Fig. 3C). Expression of PDL1 however was not limited to the cells co-expressing NP1 (Fig. 3D), suggesting that soluble mediators released by the infected cells were responsible for the upregulation of PDL1 on the whole population of macrophages.

MDM respond to influenza infection similarly to lung macrophages

As the number of macrophages that could be isolated from tissue explants was a potential limiting factor in our study, we generated MDM as previously described [17] to model lung macrophages and assessed whether MDM responded similarly to tissue-derived cells. In initial experiments, the concentration of virus used was titrated to minimise virus-induced toxicity as measured by LDH release into the supernatant and to give similar levels of infection seen in tissue macrophages (see S1 Fig.).

Using flow cytometry, we detected significant amounts of NP1 expression in X31-exposed MDM after 22 h, but not from UVX31-exposed cells (Fig. 4A). At the same time, we observed significant HA release into the culture media from X31-infected cells after 22 h compared to MDM infected for 2 h, but not from cells treated with UVX31 (Fig. 4B). As the dose of virus used was associated with minimal cell death (S1B Fig.), these data suggest that not only is viral replication occurring in MDM but that new virus is being shed from the surface of these cells.

Similarly to explant macrophages, we observed low basal levels of PDL1 on the MDM cell surface and this expression was significantly increased in response to infection with X31 but not UV-inactivated virus (Fig. 4D). Expression of the MHC class II molecule, HLA-DR, was also significantly increased upon infection of MDM with X31 as was CD86 (Fig. 4C and S1C Fig.), suggesting activation and upregulation of antigen-presentation pathways in these cells. In contrast, the expression of CD14 and PDL2 was not significantly altered in response to viral infection (S1D & E Fig.).

In order to discover if influenza infection increased PDL1 surface expression on MDM by activating PDL1 gene expression, we analysed RNA isolated from MDM infected with UV-inactivated or live virus for 24 h by RT-PCR. Viral infection caused a significant 6.4-fold increase in the steady-state levels of PDL1 mRNA when compared to uninfected cells and exposure to UVX31 did not lead to an increase in expression of this gene (Fig. 4E). Moreover, this effect was not limited to influenza, as infecting the MDM with respiratory syncytial virus (RSV) also increased PDL1 expression (S2 Fig.).

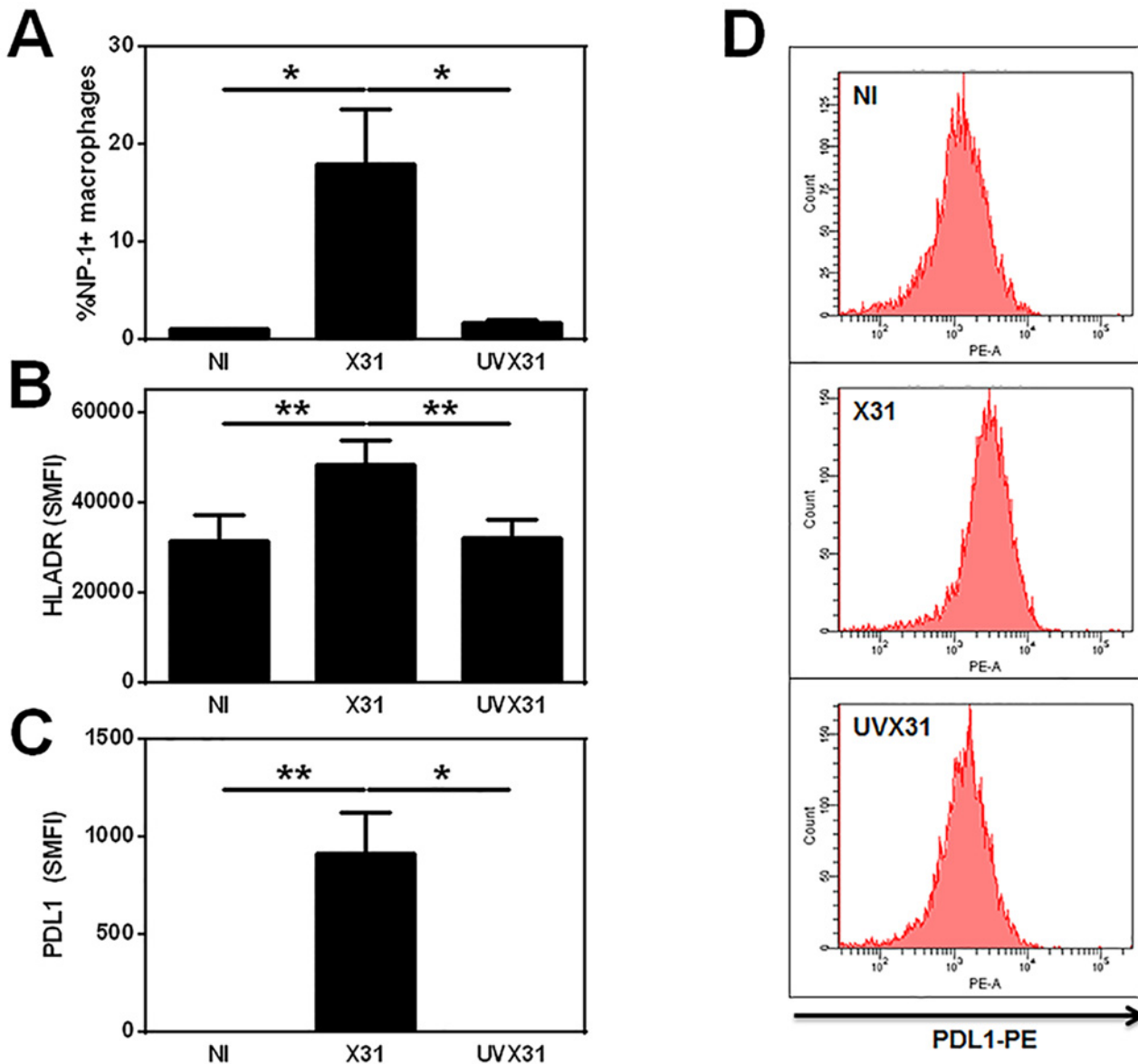


Fig 3. Infection of human lung macrophages by X31. Human lung macrophages were isolated by plate adherence prior to infection with 4000 pfu/ml of H3N2 X31 influenza virus or a UV-irradiated aliquot of virus (UVX31) for 2 h. After washing, media was replaced and the cells incubated for a further 22 h before supernatants and cells were harvested. Cells were analysed for intracellular viral NP1 expression or cell surface expression of HLA-DR and PD-L1 using flow cytometry. Histograms showing flow cytometry data of **A**) Viral NP1 expression (% cells), **B**) HLA-DR expression (specific mean fluorescence intensity—SMFI) and **C**) PDL1 expression (SMFI) from isolated human lung macrophages are expressed as means \pm SE of 4 independent experiments. **D**) Representative histograms demonstrating increase in PDL1 expression in response to influenza infection are shown. Data analysed using a paired t-test * $p < 0.05$, ** $p < 0.01$.

doi:10.1371/journal.pone.0121527.g003

Functional consequence of virus-induced PDL1 expression

To assess the functional significance of this virus-induced PDL1 expression by macrophages, we co-cultured autologous lymphocytes with influenza infected macrophages and analysed IFN γ release using ELISpot (Fig. 5). X31-infected MDM elicited significantly greater IFN γ release than uninfected or UVX31-exposed cells (Fig. 5A) although there was a trend for greater IFN γ release from autologous lymphocytes co-incubated with UVX31-exposed cells compared to uninfected

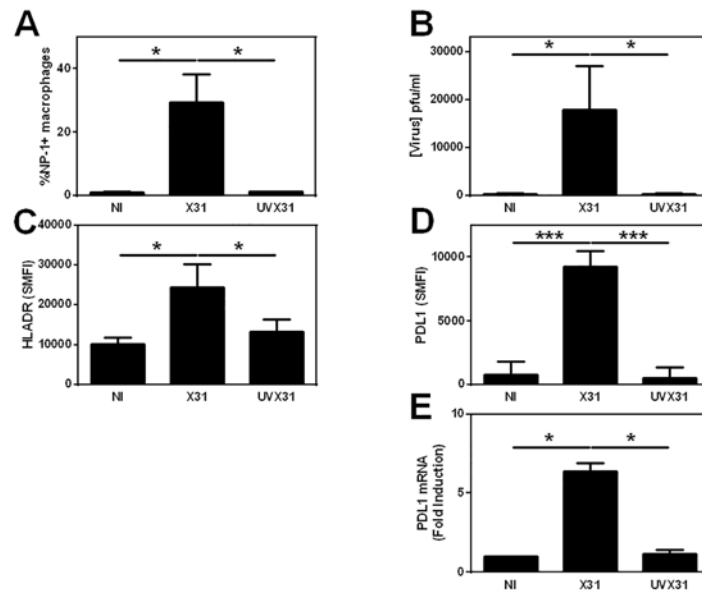


Fig 4. Infection of MDMs by X31. MDM were differentiated in the presence of 2 ng/ml GM-CSF for 12 d prior to infection with 500 pfu/ml of H3N2 X31 influenza virus or a UV-irradiated aliquot of virus (UVX31) for 2 h. After washing, media was replaced and the cells incubated for a further 22 h before supernatants and cells were harvested. Cells were analysed using flow cytometry and RT-PCR, supernatant was analysed using dot blot. Histograms showing infected MDM expression of **A**) Viral NP1 expression (% cells n = 7), **B**) release of hemagglutinin into supernatants (n = 10) **C**) cell surface HLA-DR expression (specific mean fluorescence intensity—SMFI n = 7) **D**), PDL1 expression (SMFI n = 7) **E**) PDL1 gene expression (n = 6). Data are expressed as means ± SE of n independent experiments and analysed using a paired t-test * p<0.05, ** p<0.01. *** p<0.001.

doi:10.1371/journal.pone.0121527.g004

cultures (p = 0.0659). We extended these investigations by incubating the infected macrophages with autologous CD8+ T cells and again observed a significant increase in the amount of IFN γ detected (Fig. 5B). Moreover, the amount of IFN γ released by autologous T cells was significantly enhanced when the infected MDM-CD8+ cell cultures from every donor were incubated in the presence of a PDL1 blocking antibody (10 μ g/ml), when compared to incubating with an isotype control antibody (Fig. 5C). These data suggest that the PDL1 on the macrophage surface is negatively regulating CD8+ T cell activation in line with previous investigations [7].

Influenza infection induces pro-inflammatory cytokine expression in MDM

The observation that increased macrophage PDL1 expression was not limited solely to NP1 + cells, suggested that soluble factors released by the infected cells were responsible for the up-regulation of PDL1. Since the release and expression of interferons (IFNs) is the archetypal response to viral infection we therefore investigated the expression of these cytokines by MDM infected with X31.

MDM were exposed to virus for 2 h, washed and lysed immediately or media replaced and incubated for a further 22 h before cell lysis. IFN γ gene expression was below the limit of detection (>40 cycles) at both time points in these experiments and was not detectable in any of the MDM culture supernatants in line with our ELISpot data (data not shown). In contrast IFN β , was elevated after infection with X31 for 2 h (data not shown), and this expression was significantly increased after 24 h infection (Fig. 6A). Relative induction of IFN α was lower than IFN β but followed a similar pattern with significant expression after infection for 24 h. No IFN β

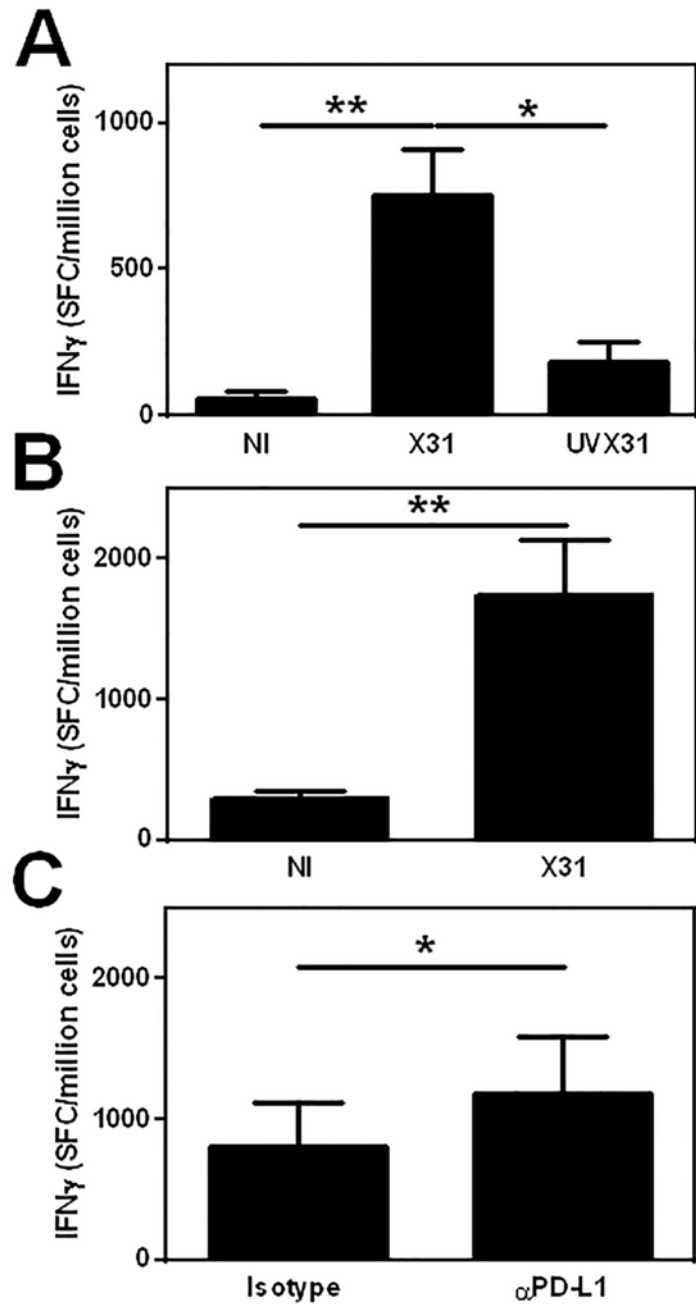


Fig 5. Functional effect of PDL1 on T cell activation. MDM were differentiated in the presence of 2 ng/ml GM-CSF for 12 d prior to infection with 500 pfu/ml of H3N2 X31 influenza virus or a UV-irradiated aliquot of virus (UVX31) for 2 h. Infected MDM were transferred to a coated ELISpot plate and autologous lymphocytes added and incubated for a further 22 h before IFN γ release was measured using ELISpot. **A**) 2.5×10^5 monocyte-depleted PBMC co-cultured with 5×10^4 autologous MDM not infected (NI) or treated with X31 or UVX31 (n = 5). **B**) 1×10^5 CD8+ T cells co-cultured with 5×10^4 autologous MDM NI or infected with X31 (n = 6) **C**) 1×10^5 CD8+ T cells co-cultured with 5×10^4 autologous MDM infected with X31 in the presence of 10 μ g/ml anti-PDL1 antibody or isotype control (n = 5). Data are expressed as means \pm SE of n independent experiments and analysed using a paired t-test * p<0.05, ** p<0.01.

doi:10.1371/journal.pone.0121527.g005

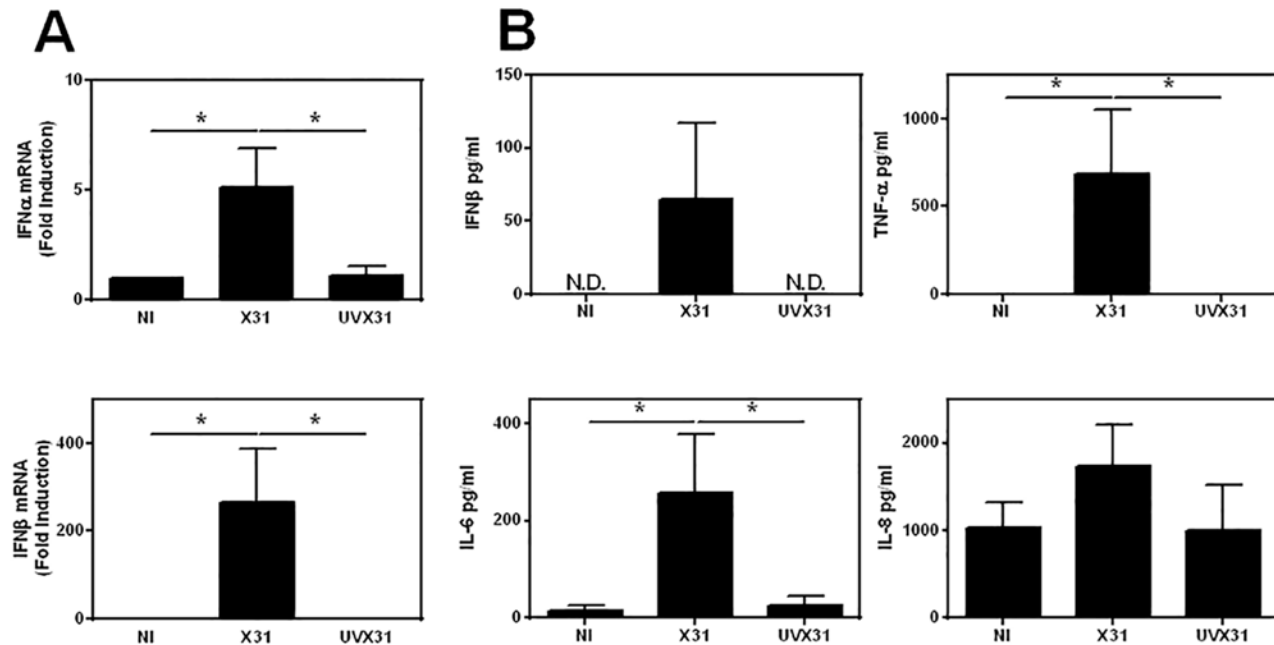


Fig 6. Effects of influenza infection on MDM cytokine expression. MDM were differentiated in the presence of 2 ng/ml GM-CSF for 12 d prior to infection with 500 pfu/ml of H3N2 X31 influenza virus or a UV-irradiated aliquot of virus (UVX31) for 2 h. After washing, media was replaced and the cells incubated for a further 22 h before supernatants and cells were harvested. Inflammatory cytokine expression was measured by **A**) real time PCR (IFN α , IFN β n = 6) and **B**) ELISA (IFN β , TNF α , IL-6, IL-8 n = 6) N.D. = not detected. PCR data were normalised to β 2MG and are expressed as mean fold induction over the non-infected (NI) sample \pm SEM of 6 independent experiments. ELISA data are expressed as means \pm SE of 6 independent experiments. Data analysed using a paired t-test. * $p < 0.05$, ** $p < 0.01$.

doi:10.1371/journal.pone.0121527.g006

could be detected in any supernatants from uninfected or UVX31 exposed cells, but detectable levels of IFN β were released into the MDM culture supernatants in response to 24 h infection with X31 (64.7 ± 52.5 pg/ml n = 6—Fig. 6B). Furthermore, infecting MDM with RSV also caused a significant upregulation of IFN β gene expression underlining the importance of this cytokine in antiviral responses (Supporting Information Fig. 2B).

Significant increases in TNF and IL-6, but not IL-8 were also detected in supernatants from X31 infected MDMs when compared to uninfected cells (Fig. 6B). To exclude a role for TNF and IL-6 in the upregulation of PDL1 by macrophages we incubated MDM with TNF and IL-6 (both 10 ng/ml) for 24 h. TNF only induced a modest 1.5-fold increase in PDL1 surface expression, whilst IL-6 (10 ng/ml) had no effect on PDL1 expression (both n = 3—data not shown).

Role of virus-induced IFN β in PDL1 expression

Since type I IFN expression was observed in response to influenza infection and previous studies have suggested that these cytokines could induce PDL1 expression [18,19], we investigated whether rhIFN β could induce PDL1 gene expression in our MDM model (Fig. 7A). We observed a dose dependent-increase in PDL1 steady-state mRNA expression in response to IFN β after 24 h. Using 50 IU of rhIFN β we saw a 2.9-fold increase in PDL1 gene expression increasing to 4.3-fold at 100 IU of this cytokine.

We confirmed that influenza infection induces PDL1 via release of IFN β by using short interfering (si)RNA directed against IFN β . After isolation, monocytes were cultured in GM-CSF media for 11 d before incubating with scrambled siRNA or siRNA specific to IFN β for 24 h in GM-CSF media. MDM were infected with influenza as previously described and IFN β and

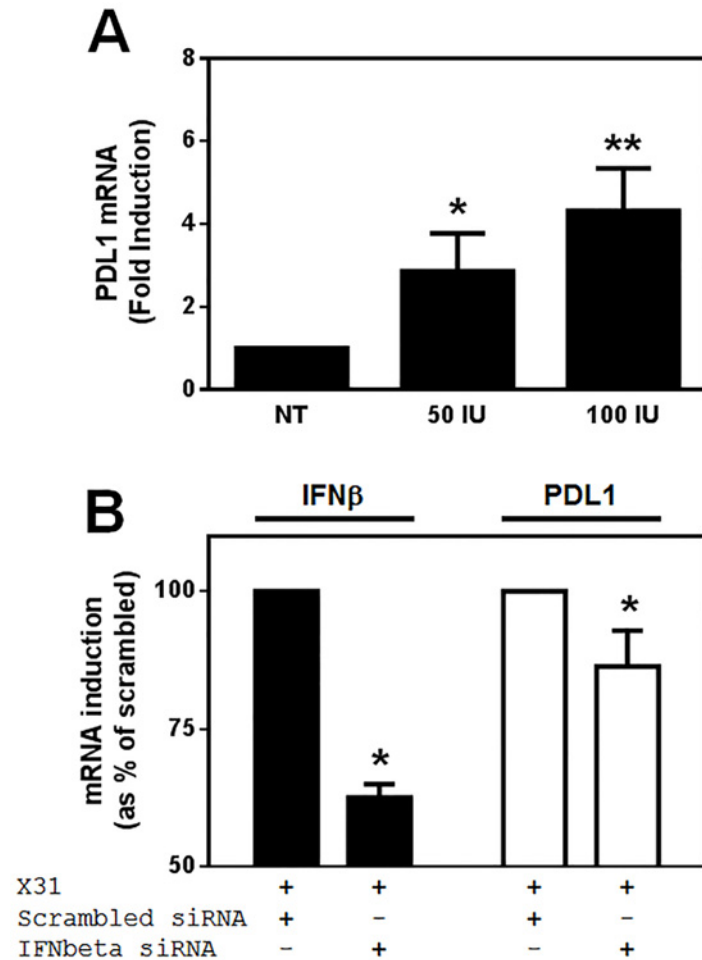


Fig 7. Regulation of PDL1 mRNA expression by influenza infection and IFNβ. **A)** PDL1 gene expression was assessed in MDM differentiated in the presence of 2 ng/ml GM-CSF for 12 d before incubation with the indicated doses of rhIFNβ for 24 h using RT-PCR (n = 5). **B)** MDM were differentiated in the presence of 2 ng/ml GM-CSF for 11 d before transfection with non-specific siRNA or siRNA specific for IFNβ in the presence of GM-CSF for 24 h. MDM were then infected with 500 pfu/ml of H3N2 X31 influenza virus or a UV-irradiated aliquot of virus (UVX31) for 2 h. After washing, media was replaced and the cells incubated for a further 22 h before cells were harvested for RT-PCR analysis of IFNβ and PDL1 mRNA expression (n = 6). PCR data were normalised to β2MG and are expressed as mean fold induction over the non-infected (NI) sample ± SEM of n independent experiments. Data analysed using a paired t-test * p<0.05, ** p<0.01.

doi:10.1371/journal.pone.0121527.g007

PDL1 mRNA expression were analysed using RT-PCR. Compared to the scrambled siRNA, the specific RNA significantly inhibited IFNβ mRNA expression by 37% (Fig. 7B). However despite this limited inhibition of IFNβ message, PDL1 mRNA was also significantly inhibited by siRNA targeted against IFNβ, albeit to a lesser degree (14% inhibition).

Discussion

In the present study, we have demonstrated for the first time that in the acute phase of influenza infection macrophages are the primary cells in the human lung expressing PDL1. This macrophage PDL1 expression has functional effects on autologous co-cultured CD8+ T cells. Furthermore, these changes in PDL1 expression were not limited to NP1+ cells and hence appear to be mediated by release of IFNβ. Whilst the expression of PDL1 by human macrophages

has been investigated in response to both HIV and HCV infection, to our knowledge this is the first investigation into the mechanisms of regulation of this molecule in human macrophages infected with respiratory viruses, such as RSV and influenza.

Influenza infection of the airway is known to affect the macrophage functions of phagocytosis and bacterial killing[20], but the question as to whether this was mediated by exogenous factors or by infection of the macrophages themselves has remained open. Early studies demonstrated that virus-induced suppression of antibacterial defences was mediated by lymphocytes[21]. Subsequent studies have suggested that it is the cytokines released by lymphocytes, such as IFN γ and IL-10 that mediate the suppressive effects of virus[1,22–24]. However, as influenza can infect and replicate in human alveolar macrophages[1], the reciprocal effects of influenza-infected macrophages on lymphocyte function have remained largely unexplored. The recent study by Erickson et al (2012) demonstrating that influenza infection of the lung can upregulate PDL1 expression on both the airway epithelium and macrophages and that this upregulation directly reduces CD8 T cell effector function highlights the dynamic relationship between infected macrophages and T cells[7]. In contrast to this previous study we did not observe an up-regulation in epithelial PDL1 expression in response to influenza infection. However, Erickson et al (2012) analysed post-mortem lung samples from individuals with severe influenza infection and thus the epithelial PDL1 expression observed may be at a more advanced stage of infection than our acute infection model can reflect[7]. Furthermore, our data suggest the importance of macrophage PDL1 expression controlling T cell responses earlier on in infection.

Expression of the T cell stimulatory molecules, HLA-DR and CD86, as well as the inhibitory PDL1 protein was induced on influenza-infected macrophages. HLA-DR is a component of the Major Histocompatibility Class (MHC) II complex involved in antigen presentation to CD4⁺ T cells[25], whilst CD86 is classically associated with activation of the CD28 signalling pathway[26]. Why the infected macrophage should upregulate both stimulatory and inhibitory signals at the same time and the functional significance of this is open for speculation. Previous investigators have suggested that there is equilibrium between expression of these markers and the activation state, with inhibitory signalling being predominant when CD80/CD86 expression is low[27]. Selenko-Gebauer et al (2003) hypothesised that PDL1 expression may function as an immunological rheostat to set a T cell activation threshold[27]. One further possibility is suggested by the fact that both CD80 and CD86 can induce signalling by the inhibitory CTLA-4 receptor on T cells as well as activating the CD28 pathway[28], therefore an inhibitory milieu may be propagated via the infected macrophage. This may be especially important in the lung as unconstrained inflammation can lead to lung function impairment and death[6].

Both type I and type II IFNs have been demonstrated to increase macrophage PDL1 expression[9]. We observed a trend towards increased blood T cell IFN γ release in response to the UV-inactivated virus and it is likely that there are more virus-specific memory T cells in the lung than in the blood. The release of IFN γ from lung resident memory T cells may therefore explain the difference in PDL1 expression between tissue macrophages and isolated macrophages exposed to UVX31. However, as IFN γ was not expressed by isolated macrophages in response to infection we focused on the role of type I IFNs in PDL1 expression in isolated cells. Levels of IFN β released from uninfected MDM were below the limit of detection, whereas influenza infection caused MDM to release measurable quantities of IFN β and addition of as little as 50 IU of this cytokine caused an increase in PDL1 mRNA expression. This amount of IFN β corresponds to approximately 250 pg of IFN β which is within the same order of magnitude as that detected from our infected-MDM by ELISA. Furthermore, we have used siRNA targeted against IFN β to demonstrate a role for this cytokine in the influenza-induced expression of PDL1. Significant attempts to optimise the efficiency of the knockdown by varying the amounts of siRNA

and transfection reagent and the time of siRNA addition, but we were unable to improve the knockdown beyond a maximum of approximately 45%. It is possible that knockdown could be improved further by reducing the number of cells to be transfected but in this investigation we had to strike a balance between efficient siRNA transfection and optimized influenza infection. We therefore opted to retain the conditions optimal for influenza infection. Despite the moderate knockdown of IFN β mRNA induced by the specific siRNA, PDL1 could still be significantly inhibited. This effect seems to be specific to IFN β as in preliminary experiments we did not observe any effect of IFN α knockdown on PDL1 expression (data not shown). These observations are in line with previous work showing a significant increase in PDL1 expression on blood monocytes in multiple sclerosis patients undergoing IFN β therapy[19].

The data presented herein may have implications for understanding the mechanisms of the virus-induced exacerbations of chronic respiratory diseases, such as severe asthma[29]. Asthma has long been associated with a skewing of lung immunity away from a Th1 (i.e. IFN γ producing) response to a high Th2 (i.e. IL-4/13 producing) response[30] and more recent work has demonstrated no significant induction of IFN γ in BAL cells from asthma patients experimentally challenged with rhinovirus[31]. Additionally, previous work has demonstrated a defect in both epithelial[32,33] and bronchoalveolar lavage cell[29] production of type I and type III IFNs in asthma in response to viral infection. Thus, in addition to the increase of viral replication resulting from decreased IFN production, the worsening of symptoms and increased inflammatory burden associated with asthma exacerbations may also be enhanced by decreased IFN-induced PDL1 expression failing to adequately control the inflammatory response to virus. Further work will be required to fully assess this possibility.

In conclusion, PDL1 expression is a primary response of monocytes/macrophages to viral infection, whether that be in the liver[11], the blood[34] or the lung[7]. Moreover the role of IFNs in upregulating PDL1 is not confined to monocytes/macrophages as IFN α and IFN γ have both been shown to increase expression of PDL1 in hepatocytes[35]. Taken together with our data using influenza and RSV, we suggest that this increased PDL1 expression is a common host response to infection by different virus families. The question remains as to why this host response mechanism in response to virus has developed and what its functional significance is? Perhaps it is a means by which anti-viral responses can be restrained before the resulting inflammation can cause too much tissue damage, as has been suggested in the liver[36]. Or, as has been suggested for HIV, this mechanism has been subverted by the virus to prevent viral clearance[37]. In terms of influenza, PDL1 co-inhibition of virus-specific memory T cells may explain the partial responses to immunization and poor cross protection from one influenza season to the next.

Supporting Information

S1 Methods. A full description of all the methods used to generate the data contained within this paper.

(DOC)

S1 Fig. Viability and cell surface marker expression of infected MDM. MDM were infected with increasing concentrations of X31 virus for 24 h and A) cells were analysed for viral NP-1 expression using flow cytometry and the percentage of NP1+ cells were gated using uninfected cells as a negative control. B) supernatants were harvested for LDH analysis. Data are expressed as means \pm SE of 3 independent experiments. C—E) Histograms showing infected MDM expression of cell surface C) CD86 expression (specific mean fluorescence intensity—SMFI n = 4) and B) PDL2 expression (SMFI n = 7) E) CD14 expression (SMFI n = 4) expressed as means \pm SE of n independent experiments. ** P<0.01, *** P<0.001

(PPTX)

S2 Fig. Infection of MDM by RSV. After infection with RSV, MDM were lysed and expression of A) RSV-N gene at 2 h and 24 h post infection, B) IFN β gene expression at 24 h and C) PDL1 gene expression were measured by RT-PCR and normalized to β 2-microglobulin. Data are expressed as mean \pm SE $2^{-\Delta\Delta Ct}$ values of 7 independent experiments. * $P < 0.05$, ** $P < 0.01$. (PPTX)

S3 Fig. Analysis of sensitivity of lymphocytes to X31 infection. A) MDMs or lymphocytes were treated with UVX31 or X31 for 2 h before washing. 5×10^4 MDMs were added to wells of an ELISPOT plate and were co-cultured with 2.5×10^5 lymphocytes. Wells not containing MDMs (T only), and wells containing MDMs only were also measured for their ability to produce IFN γ . The ELISPOT plate was incubated at 37°C for 18 h before analysis. Mean and SEM shown of 3 independent experiments. Paired students t test was performed. $p < 0.05$ (*). B) Graph showing mean percentage (\pm SE $n = 3$ independent experiments) infection of CD14 $^+$ monocytes, CD4 $^+$ and CD8 $^+$ T lymphocytes fractions of PBMC cultures exposed to increasing concentrations of X31 influenza virus for 20 h as assessed by flow cytometry. C) Representative FACS plots of 3 independent experiments at the highest dose of virus used are shown. (PPTX)

Acknowledgments

The authors wish to thank Dr Tilman Sanchez-Elsner and Dr Anthony Williams for their critical review of the manuscript and Richard Jewell and Dr Carolann MacGuire of the University of Southampton Faculty of Medicine Flow Cytometry Unit. We would also like to express our appreciation to the staff of the Southampton NIHR Respiratory Biomedical Research Unit. We extend our gratitude to all the volunteers who gave of their time and enthusiasm to make this research possible. **Ethics approval:** The study was approved by the Southampton and South West Hampshire Research Ethics Committee, Southampton, U.K.

Author Contributions

Conceived and designed the experiments: KJS BN CMS RD TMAW. Performed the experiments: KJS BN RTM CMS JCW CWB ECR KM. Analyzed the data: KJS BN CMS RTM TMAW. Wrote the paper: KJS TMAW.

References

1. Rodgers BC, Mims CA (1982) Influenza virus replication in human alveolar macrophages. *J Med Virol* 9: 177–184. PMID: [7097255](#)
2. Wang J, Nikrad MP, Travanty EA, Zhou B, Phang T, Gao B, et al. (2012) Innate immune response of human alveolar macrophages during influenza A infection. *PLoS One* 7: e29879. doi: [10.1371/journal.pone.0029879](#) PMID: [22396727](#)
3. Sheng ZM, Chertow DS, Ambroggio X, McCall S, Przygodzki RM, Cunningham RE, et al. (2011) Autopsy series of 68 cases dying before and during the 1918 influenza pandemic peak. *Proc Natl Acad Sci U S A* 108: 16416–16421. doi: [10.1073/pnas.1111179108](#) PMID: [21930918](#)
4. Sibille Y, Reynolds HY (1990) Macrophages and polymorphonuclear neutrophils in lung defense and injury. *Am Rev Respir Dis* 141: 471–501. PMID: [2405761](#)
5. Nicod LP (1999) Pulmonary defence mechanisms. *Respiration* 66: 2–11. PMID: [9973683](#)
6. Cheung CY, Poon LL, Lau AS, Luk W, Lau YL, Shortridge KF, et al. (2002) Induction of proinflammatory cytokines in human macrophages by influenza A (H5N1) viruses: a mechanism for the unusual severity of human disease? *Lancet* 360: 1831–1837. PMID: [12480361](#)
7. Erickson JJ, Gilchuk P, Hastings AK, Tollefson SJ, Johnson M, Downing MB, et al. (2012) Viral acute lower respiratory infections impair CD8 $^+$ T cells through PD-1. *J Clin Invest* 122: 2967–2982. doi: [10.1172/JCI62860](#) PMID: [22797302](#)

8. Schwartz RH (1992) Costimulation of T lymphocytes: the role of CD28, CTLA-4, and B7/BB1 in interleukin-2 production and immunotherapy. *Cell* 71: 1065–1068. PMID: [1335362](#)
9. Keir ME, Francisco LM, Sharpe AH (2007) PD-1 and its ligands in T-cell immunity. *Curr Opin Immunol* 19: 309–314. PMID: [17433872](#)
10. Day CL, Kaufmann DE, Kiepiela P, Brown JA, Moodley ES, Reddy S, et al. (2006) PD-1 expression on HIV-specific T cells is associated with T-cell exhaustion and disease progression. *Nature* 443: 350–354. PMID: [16921384](#)
11. Golden-Mason L, Palmer B, Klarquist J, Mengshol JA, Castelblanco N, Rosen HR (2007) Upregulation of PD-1 expression on circulating and intrahepatic hepatitis C virus-specific CD8+ T cells associated with reversible immune dysfunction. *J Virol* 81: 9249–9258. PMID: [17567698](#)
12. Amarnath S, Mangus CW, Wang JC, Wei F, He A, Kapoor V, et al. (2011) The PDL1-PD1 axis converts human TH1 cells into regulatory T cells. *Sci Transl Med* 3: 111ra120. doi: [10.1126/scitranslmed.3003130](#) PMID: [22133721](#)
13. Wilkinson TM, Li CK, Chui CS, Huang AK, Perkins M, Liebner JC, et al. (2012) Preexisting influenza-specific CD4+ T cells correlate with disease protection against influenza challenge in humans. *Nat Med* 18: 274–280. doi: [10.1038/nm.2612](#) PMID: [22286307](#)
14. Nicholas B, Staples KJ, Moese S, Ward J, North MC, Wilkinson TMA, et al. (2012) Validation Of Anti-Host Cell Influenza Targets Using A Novel Human Lung Tissue Model. *Am J Respir Crit Care Med* 185: A5716.
15. Tudhope SJ, Finney-Hayward TK, Nicholson AG, Mayer RJ, Barnette MS, Barnes PJ, et al. (2008) Different mitogen-activated protein kinase-dependent cytokine responses in cells of the monocyte lineage. *J Pharmacol Exp Ther* 324: 306–312. PMID: [17921189](#)
16. Taylor AE, Finney-Hayward TK, Quint JK, Thomas CM, Tudhope SJ, Wedzicha JA, et al. (2010) Defective macrophage phagocytosis of bacteria in COPD. *Eur Respir J* 35: 1039–1047. doi: [10.1183/09031936.00036709](#) PMID: [19897561](#)
17. Staples KJ, Hinks TS, Ward JA, Gunn V, Smith C, Djukanovic R (2012) Phenotypic characterization of lung macrophages in asthmatic patients: Overexpression of CCL17. *J Allergy Clin Immunol* 130: 1404–1412 e1407. doi: [10.1016/j.jaci.2012.07.023](#) PMID: [22981793](#)
18. Boasso A, Hardy AW, Landay AL, Martinson JL, Anderson SA, Dolan MJ, et al. (2008) PDL-1 upregulation on monocytes and T cells by HIV via type I interferon: restricted expression of type I interferon receptor by CCR5-expressing leukocytes. *Clin Immunol* 129: 132–144. doi: [10.1016/j.clim.2008.05.009](#) PMID: [18650129](#)
19. Schreiner B, Mitsdoerffer M, Kieseier BC, Chen L, Hartung HP, Weller M, et al. (2004) Interferon-beta enhances monocyte and dendritic cell expression of B7-H1 (PD-L1), a strong inhibitor of autologous T-cell activation: relevance for the immune modulatory effect in multiple sclerosis. *J Neuroimmunol* 155: 172–182. PMID: [15342209](#)
20. Warshauer D, Goldstein E, Akers T, Lippert W, Kim M (1977) Effect of influenza viral infection on the ingestion and killing of bacteria by alveolar macrophages. *Am Rev Respir Dis* 115: 269–277. PMID: [842940](#)
21. Jakab GJ (1982) Immune impairment of alveolar macrophage phagocytosis during influenza virus pneumonia. *Am Rev Respir Dis* 126: 778–782. PMID: [7149441](#)
22. van der Sluijs KF, van Elden LJ, Nijhuis M, Schuurman R, Pater JM, Florquin S, et al. (2004) IL-10 is an important mediator of the enhanced susceptibility to pneumococcal pneumonia after influenza infection. *J Immunol* 172: 7603–7609. PMID: [15187140](#)
23. Sun K, Metzger DW (2008) Inhibition of pulmonary antibacterial defense by interferon-gamma during recovery from influenza infection. *Nat Med* 14: 558–564. doi: [10.1038/nm1765](#) PMID: [18438414](#)
24. Hang do TT, Choi EJ, Song JY, Kim SE, Kwak J, Shin YK (2011) Differential effect of prior influenza infection on alveolar macrophage phagocytosis of *Staphylococcus aureus* and *Escherichia coli*: involvement of interferon-gamma production. *Microbiol Immunol* 55: 751–759. doi: [10.1111/j.1348-0421.2011.00383.x](#) PMID: [21895747](#)
25. Sundberg EJ, Deng L, Mariuzza RA (2007) TCR recognition of peptide/MHC class II complexes and superantigens. *Semin Immunol* 19: 262–271. PMID: [17560120](#)
26. Greenwald RJ, Freeman GJ, Sharpe AH (2005) The B7 family revisited. *Annu Rev Immunol* 23: 515–548. PMID: [15771580](#)
27. Selenko-Gebauer N, Majdic O, Szekeres A, Hofler G, Guthann E, Korthauer U, et al. (2003) B7-H1 (programmed death-1 ligand) on dendritic cells is involved in the induction and maintenance of T cell anergy. *J Immunol* 170: 3637–3644. PMID: [12646628](#)
28. Chen L (2004) Co-inhibitory molecules of the B7-CD28 family in the control of T-cell immunity. *Nat Rev Immunol* 4: 336–347. PMID: [15122199](#)

29. Sykes A, Edwards MR, Macintyre J, del Rosario A, Bakhsholiani E, Trujillo-Torralbo MB et al. (2012) Rhinovirus 16-induced IFN-alpha and IFN-beta are deficient in bronchoalveolar lavage cells in asthmatic patients. *J Allergy Clin Immunol* 129: 1506–1514 e1506. doi: [10.1016/j.jaci.2012.03.044](https://doi.org/10.1016/j.jaci.2012.03.044) PMID: [22657407](https://pubmed.ncbi.nlm.nih.gov/22657407/)
30. Robinson DS, Hamid Q, Ying S, Tsicopoulos A, Barkans J, Bentley AM, et al. (1992) Predominant TH2-like bronchoalveolar T-lymphocyte population in atopic asthma. *N Engl J Med* 326: 298–304. PMID: [1530827](https://pubmed.ncbi.nlm.nih.gov/1530827/)
31. Message SD, Laza-Stanca V, Mallia P, Parker HL, Zhu J, Kebabze T, et al. (2008) Rhinovirus-induced lower respiratory illness is increased in asthma and related to virus load and Th1/2 cytokine and IL-10 production. *Proc Natl Acad Sci U S A* 105: 13562–13567. doi: [10.1073/pnas.0804181105](https://doi.org/10.1073/pnas.0804181105) PMID: [18768794](https://pubmed.ncbi.nlm.nih.gov/18768794/)
32. Wark PA, Johnston SL, Bucchieri F, Powell R, Puddicombe S, Laza-Stanca V, et al. (2005) Asthmatic bronchial epithelial cells have a deficient innate immune response to infection with rhinovirus. *J Exp Med* 201: 937–947. PMID: [15781584](https://pubmed.ncbi.nlm.nih.gov/15781584/)
33. Contoli M, Message SD, Laza-Stanca V, Edwards MR, Wark PA, Bartlett NW, et al. (2006) Role of deficient type III interferon-lambda production in asthma exacerbations. *Nat Med* 12: 1023–1026. PMID: [16906156](https://pubmed.ncbi.nlm.nih.gov/16906156/)
34. Trabattoni D, Saresella M, Biasin M, Boasso A, Piacentini L, Ferrante P, et al. (2003) B7-H1 is up-regulated in HIV infection and is a novel surrogate marker of disease progression. *Blood* 101: 2514–2520. PMID: [12468426](https://pubmed.ncbi.nlm.nih.gov/12468426/)
35. Muhlbauer M, Fleck M, Schutz C, Weiss T, Froh M, Blank C, et al. (2006) PD-L1 is induced in hepatocytes by viral infection and by interferon-alpha and-gamma and mediates T cell apoptosis. *J Hepatol* 45: 520–528. PMID: [16876901](https://pubmed.ncbi.nlm.nih.gov/16876901/)
36. Xie Z, Chen Y, Zhao S, Yang Z, Yao X, Guo S, et al. (2009) Intrahepatic PD-1/PD-L1 up-regulation closely correlates with inflammation and virus replication in patients with chronic HBV infection. *Immunol Invest* 38: 624–638. PMID: [19811426](https://pubmed.ncbi.nlm.nih.gov/19811426/)
37. Khan N, Gowthaman U, Pahari S, Agrewala JN (2012) Manipulation of costimulatory molecules by intracellular pathogens: veni, vidi, vici!! *PLoS Pathog* 8: e1002676. doi: [10.1371/journal.ppat.1002676](https://doi.org/10.1371/journal.ppat.1002676) PMID: [22719245](https://pubmed.ncbi.nlm.nih.gov/22719245/)
38. Sallusto F, Lanzavecchia A (1994) Efficient presentation of soluble antigen by cultured human dendritic cells is maintained by granulocyte/macrophage colony-stimulating factor plus interleukin 4 and down-regulated by tumor necrosis factor alpha. *J Exp Med* 179: 1109–1118. PMID: [8145033](https://pubmed.ncbi.nlm.nih.gov/8145033/)