

Effects of frontal and plan solidities on aerodynamic parameters and the roughness sublayer in turbulent boundary layers

M. Placidi and B. Ganapathisubramani[†]

Aerodynamics and Flight Mechanics Research Group
Faculty of Engineering and the Environment
University of Southampton, SO17 1BJ, UK

(Received ?; revised ?; accepted ?. - To be entered by editorial office)

Experiments were conducted in the fully-rough regime on surfaces with large relative roughness height ($h/\delta \approx 0.1$, where h is the roughness height and δ is the boundary layer thickness). The surfaces were generated by distributed LEGOTM bricks of uniform height, arranged in different configurations. Measurements were made with both floating-element drag-balance and high-resolution particle image velocimetry on six configurations with different frontal solidity, λ_F , at fixed plan solidity, λ_P , and vice versa, for a total of twelve rough-wall cases. Results indicate that the drag reaches a peak value $\lambda_F \approx 0.21$ or a constant $\lambda_P = 0.27$, whilst it monotonically decreases for increasing values of λ_P for a fixed $\lambda_F = 0.15$. This is in contrast with previous studies in the literature based on cube roughness that show a peak in drag for both λ_F and λ_P variations. The influence of surface morphology on the depth of the roughness sublayer (RSL) is also investigated. Its depth is found to be inversely proportional to the roughness length, y_0 . A decrease in y_0 is usually accompanied by a thickening of the the RSL and vice-versa. Proper orthogonal decomposition analysis was also employed. The shapes of the most energetic modes calculated using the data across the entire boundary layer are found to be self-similar across the twelve rough-walls cases, however, when the analysis is restricted to the roughness sublayer, differences that depend on the wall morphology are apparent. Moreover, the energy content of the POD modes within the RSL suggest that the effect of increased frontal solidity is to redistribute the energy towards the larger-scales (i.e. larger portion of energy is within the first few modes) whilst the opposite is found for variation of plan solidity.

Key words:

1. Introduction and background

Surface roughness is found in abundance in natural environments and plays an important role in a variety of practical and engineering applications. Nevertheless, while rough-walls are of great importance, they are much less understood than their smooth-wall counterpart (Jimenez 2004). It is well established that, compared to the law of the wall for smooth-walls, any rough surface morphology results in a downward shift in the logarithmic portion of the velocity profile. For a rough-wall boundary layer, the velocity

[†] Email address for correspondence: g.bharath@soton.ac.uk

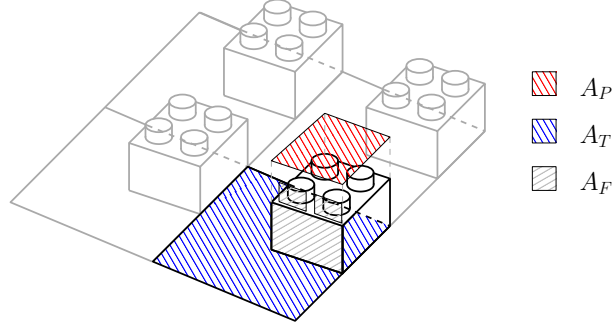


FIGURE 1. Definition of frontal and plan solidities. Black lines identify a single repeated unit, grey lines show how adjacent units are linked together to build the wall morphology. Inspired by Grimmond & Oke (1999).

profile in the log-region can be expressed as:

$$U^+ = \frac{1}{\kappa} \ln \left(\frac{y-d}{y_0} \right) \equiv \frac{1}{\kappa} \ln (y-d)^+ + B - \Delta U^+, \quad (1.1)$$

where κ is the von Kármán constant and B is the smooth-wall intercept. It is important to point out that the left-hand-side expression is only valid in fully-rough conditions (i.e. $y_0^+ > 2$ as from Castro 2007) where viscous effects at the surface are negligible, as in the current study. The downward shift of the log-region is represented by the roughness length y_0 in meteorology, or equivalently by ΔU^+ in the engineering community. d is referred to as the zero-plane displacement, which Jackson (1981) proposed to be interpreted as the height at which the mean surface drag appears to act.

Early experimental studies of rough surfaces were focused on high-density rough-walls. For these wall morphologies, a good defining parameter was found to be the “equivalent sand roughness”, h_s (Nikuradse 1933). However, since Schlichting (1937), the tendency has been to characterise the effect of regularly distributed roughness using two density parameters: frontal and plan solidities. The frontal solidity, λ_F , is defined as the total projected frontal area of the roughness elements per unit wall-parallel area, while the plan solidity, λ_P , is the ratio between the plan area and the unit wall-parallel area, as highlighted in figure 1. It is important to highlight that this roughness characterisation is far from universal (i.e. valid for any rough-wall). As it is not in the intension of the authors to investigate the latter, previous studies are followed to facilitate comparisons and highlight some of the limitations of this formulation. In the current study, the roughness is classified via three parameters: λ_F , λ_P , h/δ .

Various studies have examined the effect of surface morphology on drag, and attempted to find correlations for $y_0 = f(\lambda_F, \lambda_P)$. These studies mainly classified the flow into two regimes: sparse ($\lambda_F < 0.15$), in which y_0 increases with solidity, and dense ($\lambda_F \geq 0.15$), for which y_0 decreases. This is because, as the density increases so does the roughness of the system, but a point comes where adding new elements merely serves to reduce the effective drag of those already present due to mutual sheltering; that is, they start to smoothen the roughness of the system (Grimmond & Oke 1999). Comprehensive reviews of different morphometric drag-prediction algorithms and an analysis of their accuracy can be found in Grimmond & Oke (1999), Macdonald (1998) and more recently

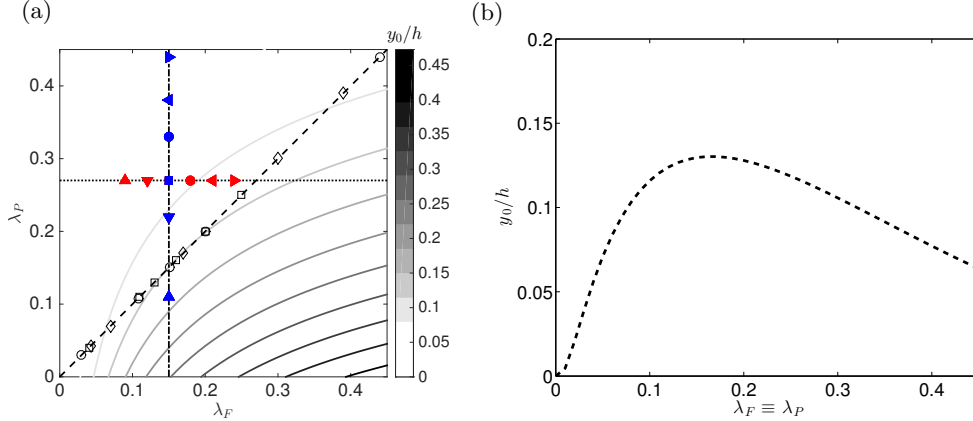


FIGURE 2. (a) Contour plot of the Macdonald’s prediction of the roughness length behaviour as a function of λ_F and λ_P calculated using the expressions presented in Macdonald (1998) with $Cd = 1.2$, $k = 0.41$, $\beta = 1$ and $A = 4.43$. Colorbar shows y_0/h . Dashed line represents $\lambda_F \equiv \lambda_P$ (cubes), dot-dashed line represents variation of λ_P at fixed λ_F and dotted line stands for variation of λ_F at fixed λ_P . Filled symbols indicate the current experiment while empty symbols indicate respectively \circ Kanda *et al.* (2004), \diamond Hagishima *et al.* (2009) and \square Leonardi & Castro (2010). A cut along the dashed in figure (a) is presented in (b).

in Millward-Hopkins *et al.* (2011) and Kanda *et al.* (2013). The main limitation of these above-mentioned studies is the fact that the suggested correlations $y_0 = y_0(\lambda_F, \lambda_P)$ are calculated over a collection of data sets from disparate sources with significantly different boundary conditions and characterised by geometrically different roughness elements. Regardless, amongst the morphometric bulk drag prediction methods, Macdonald’s (1998) appears to be widely used as it incorporates a broader range of scenarios when compared to other methods (Grimmond & Oke 1999 and Millward-Hopkins *et al.* 2011). Figure 2(a) shows its prediction for y_0 as a function of λ_F and λ_P . Figure 2(b) shows the well-established empirical relationship between drag and λ_F . This has been observed in previous studies on rough-wall boundary layers as reported by Grimmond & Oke (1999) and Jimenez (2004). However, the effect of plan solidity on bulk quantities is not clear. Additionally, effects of large roughness elements on these correlations remain unresolved. Castro (2007) pointed out that, although there is a substantial literature on rough-wall flows and there have been a number of attempts to develop useful correlations relating the surface friction to boundary-layer parameters over a wide range of surface roughness, such correlations have mainly considered only small h/δ and it is not known how adequate they are at larger values of h/δ or what the critical value h/δ should be.

Most previous studies that systematically explored the effect of surface morphology on drag were carried out with cubical roughness elements. These studies include both numerical and physical experiments (Cheng & Castro 2002b; Coceal & Belcher 2004; Kanda *et al.* 2004; Cheng *et al.* 2007; Hagishima *et al.* 2009; Santiago *et al.* 2008; Leonardi & Castro 2010 among various others). Open symbols in figure 2(a) show the cases examined in these studies. Any conclusion regarding the relationship between plan solidity and drag deduced from these studies is limited, since for cube roughness, λ_F is equal to λ_P . Similarly, any study on regular geometric staggered arrays of roughness for which the frontal and plan solidities are related by a mathematical relation (provided that there is no mutual sheltering between the elements) will lie on a similar curve to the dashed line in figure 2(a), although with a different slope. This means that the isolated effect of one of these two parameters will remain undetected. Isolating the effect of the two solidities

is only possible by following the dotted line and the dot-dashed line (or any alternative lines parallel to those), i.e., varying λ_F at a fixed λ_P and vice-versa. These branches have not been explored before. In this study, we explore the behaviour of drag along those dotted and dot-dashed lines in figure 2(a) in turbulent boundary layers with relatively large roughness elements ($h/\delta \approx 0.1$, where h is the height of the roughness element and δ is the local boundary layer thickness).

The aim of this study is to examine the individual effects of frontal and plan solidities at a constant $h/\delta \approx 0.1$ on drag and roughness sublayer. In order to do so, a systematic series of experiments were carried out by varying λ_F at a fixed λ_P and vice-versa. A total of twelve different configurations were tested and the resulting data, that covers the entire regime of solidities (sparse to dense), will be used to examine the drag generated by the different surfaces as well as their effect on the roughness sublayer. This will enable us to not only isolate the effects of λ_P and λ_F on the drag but also to examine the spatial similarity of the flow in case of strong roughness ($h/\delta \approx 0.1$).

2. Experimental Facility and Details

2.1. Experimental Facility

The experiments were carried out in a suction wind tunnel at the University of Southampton. The same facility has been used for previous rough-wall studies such as Reynolds & Castro (2008) and Amir & Castro (2011). The tunnel has a working section of 4.5 m in length, with a 0.9 m \times 0.6 m cross-section. The free-stream turbulence intensity in the tunnel has been verified through hot wire anemometry measurements, to be homogeneous across the cross-section and less than 0.3%. In this study, (x, y, z) are the streamwise, wall-normal and spanwise directions, respectively, with the plane $y = 0$ being the bottom surface of the baseboard onto which the roughness elements were located, as shown in figure 3(a). The mean and fluctuating velocities along these three directions are denoted as (U, V, W) and (u, v, w) , respectively. The point statistics presented in this paper are obtained by ensemble averaging over a number of PIV realisations followed by spatial averaging across the PIV field-of-view (FOV). Experiments were conducted in nominally zero-pressure-gradient (ZPG) as the acceleration parameter ($K = (\nu/U_e^2)[dU_e/dx]$) was less than 5×10^{-8} .

2.2. Roughness morphology

For rough surfaces, this study used LEGOTM baseboards onto which LEGOTM bricks (or blocks) were distributed in different patterns. Twelve different patterns were adopted in order to systematically examine the individual effects of frontal and plan solidities on the structure of the turbulence. Although not shown here for brevity, the effect of the incoming boundary layer (due to the baseboard) has been quantified. This was found to be negligible as the flow is in equilibrium and fully-developed over the bricks at the measurement location. Figure 3 shows the geometry of a LEGOTM element and the basic repetitive units adopted to generate the different patterns in analysis (frontal and plan solidities variations in figure 3(b) left and right respectively). A single dark square in the top view is a single LEGOTM brick. This brick has a streamwise \times spanwise dimension of 7.8 mm \times 7.8 mm and its height is $h = 11.4$ mm (which includes the pin at the top) as shown in figure 3(a). Patterns LF1 to LF6 represent cases for which the frontal solidity is varied at a fixed plan solidity whilst, in cases LP1 to LP6 the plan solidity is varied at fixed frontal solidity. These variations follow the dotted and dot-dashed lines in figure 2(a). The different cases were designed on the basis of previous studies that show the location of the peaks in y_0 at $\lambda_P = 0.27$ and $\lambda_F = 0.15$ (Grimmond & Oke 1999 and

Jimenez 2004). Progressive repositioning of the downstream roughness elements in the sheltered regions of the upstream obstacles, has allowed us to achieve variations in plan solidity at fixed frontal solidity. The same sheltering principle is applied to obtain the cases with varying λ_F at fixed λ_P . This has enabled the examination of the behaviour of the bulk quantities along the dotted and dot-dashed lines in figure 2(a). The filled symbols in 2(a) indicate the cases studied in this paper. The unit wall-parallel area of each repetitive units was also kept fixed at $70.2 \text{ mm} \times 39 \text{ mm}$ and $46.8 \text{ mm} \times 46.8 \text{ mm}$ for the frontal and plan variation cases respectively. In evaluating λ_F and λ_P , the complete LEGOTM bricks have been considered (including the pins on top of the blocks, as shown in figure 1).

2.3. Floating-element drag-balance

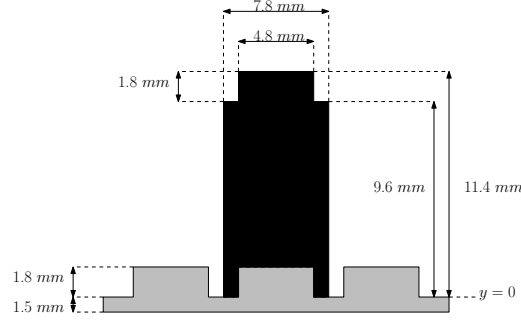
The drag generated by the different wall morphologies was directly measured via a floating element balance (which was based on the design of Krogstad & Efros 2010). This balance was placed approximately 4 m downstream along the test section (the flow developed initially over the baseboard for 1.7 m and a further 2.3 m over the bricks). Figure 4 shows a schematic of the balance. A measurement patch (replica of the testing surface) is positioned in the tunnel floor through a cut hole; this element is mechanically connected to a two-arm lever system which converts the horizontal stress acting at the wall into a wall-normal load. A $370 \text{ mm} \times 370 \text{ mm}$ patch of the roughness was mounted on the top of the vertical arm of the balance to act as sensing element. The measuring element was centred in a hole cut at the bottom of the wind tunnel floor surrounded by approximately 1.5 mm gap to allow movement (i.e. readings onto the scale). It was important to prevent any possible airflow through this gap around the tile, as this would affect the measurements. As the present work is carried out in a suction wind tunnel, the static pressure inside the tunnel was always significantly lower than the atmospheric pressure. This necessitated mounting the entire balance in a sealed box, so that the measured force was not influenced. The sealed box was made out of soft plastic sheet. The static pressure inside both the tunnel and the box were monitored to prevent pressure difference effect. This was found to be negligible within the measurement uncertainty. The relatively big sensing element's size, compared to the original version in Krogstad & Efros (2010), allows a number of repeated units to be included in the measurements patch. The lever system, which rests on a knife edge, allows mechanical amplification of the forces based on the mutual length of the arms. The normal load is then measured by a high-sensitivity off-the-shelf precision *Ohaus* scale with a sensitivity of 0.01 g (Gold Series no. TAJ602/A). The measurement resolution, in the worst case, was typically 2.5×10^{-4} the applied load. For additional details on the balance, the reader is referred to the original design in Krogstad & Efros (2010) and Efros (2011).

2.4. Particle image velocimetry

2.4.1. Planar PIV

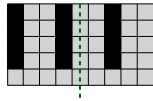
Particle Image Velocimetry (PIV) measurements were taken for all patterns at a freestream velocity, U_∞ , of 11.5 m/s. The test location was at the same streamwise location as the skin-friction measurements. As will be shown later, at this freestream velocity the flow over all surfaces is considered to meet fully-rough conditions (or very close to it) to within the uncertainty of the skin-friction measurements. The flow was seeded with vaporised glycol-water solution particles (1 μm in diameter) illuminated with a 0.7 mm thick laser sheet produced by a pulsed New Wave Nd:YAG laser system operating at 200 mJ. The position of the laser sheet with respect to the roughness configuration is indicated by dashed lines in figure 3(b). Streamwise wall-normal (x, y)

(a) Side view

(b) Top View (basic square unit: $7.8 \times 7.8 \text{ mm}^2$)**Pattern: LF1**

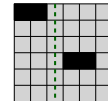
$\lambda_F = 0.09$

$\lambda_P = 0.27$

**Pattern: LP1**

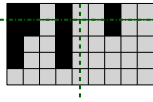
$\lambda_P = 0.11$

$\lambda_F = 0.15$

**Pattern: LF2**

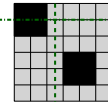
$\lambda_F = 0.12$

$\lambda_P = 0.27$

**Pattern: LP2**

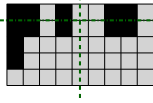
$\lambda_P = 0.22$

$\lambda_F = 0.15$

**Pattern: LF3**

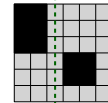
$\lambda_F = 0.15$

$\lambda_P = 0.27$

**Pattern: LP3**

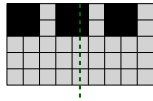
$\lambda_P = 0.27$

$\lambda_F = 0.15$

**Pattern: LF4**

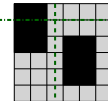
$\lambda_F = 0.18$

$\lambda_P = 0.27$

**Pattern: LP4**

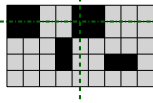
$\lambda_P = 0.33$

$\lambda_F = 0.15$

**Pattern: LF5**

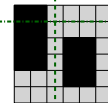
$\lambda_F = 0.21$

$\lambda_P = 0.27$

**Pattern: LP5**

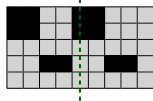
$\lambda_P = 0.39$

$\lambda_F = 0.15$

**Pattern: LF6**

$\lambda_F = 0.24$

$\lambda_P = 0.27$

**Pattern: LP6**

$\lambda_P = 0.44$

$\lambda_F = 0.15$

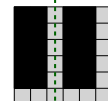


FIGURE 3. (a) LEGOTM brick geometry, (b) roughness elements' patterns with varying λ_F at $\lambda_P = \text{const} = 0.27$ (left) and roughness elements' patterns with varying λ_P at $\lambda_F = \text{const} = 0.15$ (right). Dashed and dash-dotted lines in (b) indicate the position of the laser sheet during the measurements with the respect of each repeated unit for the 2D and 3D PIV setup respectively. Dimensions are not in scale for ease of readability. Flow is top to bottom in (b).

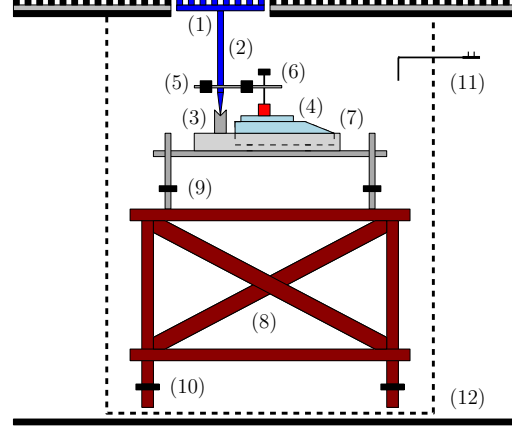


FIGURE 4. Schematic of the floating element drag balance. Components: (1) measurement patch, (2) two-arm lever system, (3) knife edge, (4) precision scale, (5) counterbalance weights, (6) load-transfer adjustment pin, (7) H-frame containing the scale, (8) base structure, (9) fine adjustment feet, (10) rough adjustment feet, (11) Pitot tube, (12) sealed box.

planes were acquired at the spanwise centreline of the test section by a 16 *M pixel* high-resolution camera equipped with Nikon 105 *mm* f/8 lenses at a fixed sampling frequency of 0.8 *Hz*. This is so that statistically uncorrelated measurements are acquired for each image pair. For each run, 2000 image pairs were acquired and processed with *DaVis 8.0* software. The setup allowed a field of view of 200 *mm* \times 136 *mm* (approximately $1.8\delta \times 1.3\delta$ streamwise-wall-normal for each roughness configurations). Velocity vectors were obtained using 16 \times 16 *pixel*² final interrogation windows with 50% overlap. The resulting spatial resolution is approximately 0.7 *mm* \times 0.7 *mm* for all cases and successive vectors are spaced at half that distance (due to 50% overlap). Images were preprocessed with averaged minimum intensity background subtraction. After this procedure, a field of 97–99% good vectors was achieved, minimising the need of interpolation (when necessary a local mean interpolation was used).

The time delay between laser pulses across all the cases was chosen such that the pixel displacement in the freestream was approximately 15 pixels. This ensures that the bias error of the PIV velocity measurements is less than 1% of the full-scale velocity (given that the sub-pixel determination has an uncertainty of about ± 0.1 pixels - see Adrian & Westerweel 2011). The overall uncertainty in turbulence quantities was determined, following Benedict & Gould (1996) and was found to be less than 1% in the mean velocity, 5% and 8% for the streamwise and normal turbulence intensities and 10% for the shear stresses. These values are also in line with previous PIV-based studies on rough-wall turbulent flows (e.g. Wu & Christensen 2007).

The resolution of the current 2D data sets ranges between 28 to 42 wall-units, due to differences in the skin friction velocities generated by the different surface morphologies. The different local resolution has a tangible effect on the turbulence statistics, in particular on the higher-order quantities. Therefore, for all the 2D PIV results presented herein, the data sets have been filtered with a low-pass Gaussian filter designed to match the local resolution at $l_{2D}^+ = 45$. It must be noted that this filtered spatial resolution is comparable (if not better) than previous cross-wire and PIV based measurements presented in the literature.

2.4.2. Stereoscopic PIV

Given the high relative roughness height (h/δ), spanwise flow heterogeneity is to be expected within the roughness sublayer. To investigate this, stereoscopic PIV measurements were also carried out in wall-normal-spanwise (y, z) plane at roughly the same location of the 2D measurements. Two cameras with the same specifications as for the 2D measurements were used to acquire 1500 digital image pairs. A FOV covering a minimum of two spanwise repeated-units ($1.5\delta \times 1.5\delta$ spanwise-wall-normal) was resolved. A 1.5mm thick laser sheet was used to illuminate the particles and the time delay between the laser pulses ($\Delta t = 20\mu\text{s}$) had to be reduced accordingly so that the particles would not leave the laser sheet plane. This reduced Δt has an influence on the averaged pixel displacement of the particles, and hence the PIV uncertainty. Measurements were carried out only across six cases: LF2, LF3, LF5 and LP2, LP4, LP5 as these represent conditions for sparse, medium and dense solidity regimes. The cameras were oriented at an angle of approximately 25° to the measurement plane axis, which is appropriate to accurately resolve the out-of-plane velocity component (Raffel *et al.* 1998). Scheimpflug adaptors were mounted on the lenses to help maintain focus across the entire field of view by orienting the lens plane at an angle to the image plane, as discussed in Raffel *et al.* (1998). A two-plane calibration target was used for calibration, and self-calibration using *Davis 8.0* was applied to improve the quality of the final velocity field (typically up to 2-pixel correction was used). Velocity vectors were obtained using 32×32 *pixel*² final interrogation windows with 50% overlap. This resolution is coarser than the planar PIV measurement, however, given the nature of measurements (i.e. flow perpendicular to laser sheet) and the thickness of laser sheet, this interrogation window is deemed sufficient. The worst case resolution (l_{3D}^+) across the different cases was approximately 120 wall-units, therefore for the same reasons previously discussed, the 3D dataset has been filtered to match the local resolution across cases at $l_{3D}^+ = 125$. This is comparable to similar measurements in the literature.

2.5. Indirect estimate of skin-friction

The skin friction velocity, $U_\tau = \sqrt{\tau_w/\rho}$, where τ_w is the wall total shear stress and ρ is the density of the fluid, is commonly assumed to be the average Reynolds shear stress in the log-region. In this paper, we refer to this as an indirect method for determining skin-friction velocity. Cheng & Castro (2002b) in their experiments on different urban roughnesses (all with $\lambda_F \equiv \lambda_P = 0.25$) demonstrated that an optimum estimation for the skin friction velocity can be obtained from spatially averaged Reynolds shear stress within both the roughness sublayer (RSL) and the inertial sublayer (ISL). The reader is referred to § 3.2 for further details on these regions. This shows that by spatially averaging over a roughness repeating unit, the logarithmic region can be extended to the roughness sublayer. In our investigation, the average across the streamwise direction and over a single repetitive unit yielded, within experimental uncertainty, the same results. Furthermore, Cheng *et al.* (2007) also argued that for boundary-layer flows over staggered arrays of cubical elements, the $\rho\bar{u}\bar{v}$ underestimates the surface stress by some 25%. Therefore, a corrected estimate should be used, defined as (Reynolds & Castro 2008),

$$U_\tau = 1.12\sqrt{-\bar{u}\bar{v}} \Big|_{2 < y/h < 3}; \quad (2.1)$$

where the Reynolds shear stress is evaluated from the plateau region in the roughness sublayer (as in Flack *et al.* 2005 and Castro 2007). Both these above-mentioned approaches yield a U_τ value that is within 5% of each other. This value is also similar to

the U_τ obtained by assuming it to be the maximum of the Reynolds shear stresses as in other studies in the literature (Manes *et al.* 2011).

2.6. Determination of aerodynamic parameters

the skin friction velocity is known (as measured via the drag-balance), a least-square-fit procedure was adopted to evaluate the zero-plane displacement, d , and the roughness length, y_0 . This procedure is applied on the mean velocity field that was obtained by first ensemble averaging the data followed by streamwise averaging across the entire FOV. The log-layer is assumed to exist for $1.5h \leq y \leq 0.2\delta$ as in Schultz & Flack (2005). The fitting procedures were carried out with $\kappa = 0.38$ for all surfaces. This value is close to the value of κ suggested by Marusic *et al.* (2013), for high Reynolds number smooth-wall boundary layers, where $\kappa = 0.39 \pm 0.02$. A different choice of κ alters the numerical values of y_0 and d but not the trends shown in the following sections. It is important to highlight that, although is of common practice, fitting velocity profiles to determine the unknowns in equation 1.1, bares great uncertainty. This is due to the difficulties, particularly at the large h/δ , in determining both the skin friction velocity and the log-law boundaries (Acharya *et al.* 1986; Castro 2007; Segalini *et al.* 2013). The reduction of the wall-normal range of the logarithmic layer, due to the increasing importance of the RSL is another important factor to take into account.

3. Results and discussion

Section 3.1 shows the effect of the surface morphology on the aerodynamic parameters. Section 3.2 examines the effect of the wall morphology on the roughness sub layer (RSL). Finally section 3.3 introduces the details of the proper orthogonal decomposition analysis and its implementation to examine the global spatial structure of the flow over different types of roughness. The turbulent kinetic energy content at different flow scales is also investigated.

3.1. Effect of surface morphology on aerodynamic parameters

Before examining the effect of the surface morphologies on aerodynamic parameters, it is useful to determine if these surfaces are fully-rough, in order to ensure that the results presented herein are solely due to the different roughness morphologies, rather than the product of a change in Reynolds number (i.e. viscous effects). There is general consensus in the literature that fully-rough conditions are attained when $y_0^+ > 2$ (Castro 2007) to $h_s^+ > 70$ (Flack *et al.* 2005). Here h_s is the equivalent sand-grain roughness as in Nikuradse (1933). Recent findings have cast doubt on these limits and pointed out that, depending on the surface morphology, values up to $y_0^+ > 10$ might be necessary to guarantee the fully-rough conditions (Castro *et al.* 2013). In order to assess if the surfaces in the current study are in the fully-rough regime, the friction coefficient, $C_f = 2(U_\tau/U_\infty)^2$, was measured with the drag-balance at different inflow velocities and hence, different Reynolds numbers ($Re_h = U_\infty h/\nu$). Velocity range in between 11.5 to 20 m/s were considered and the results are presented in figure 5(a) & (b) for the frontal and plan solidity cases respectively. It is clear that the variation in the measured friction coefficient at different velocities is within the limits of uncertainty. It follows that, within the measurement uncertainty, all cases in both λ_F and λ_P are to be considered in the fully-rough regime, i.e. Reynolds number independent. Hence, if differences are observed in the aerodynamic parameters, these are purely an effect of surface morphology. It should be pointed out that additional velocities were tested (down to 6 m/s). These results are here omitted as the measurement resolution was lower than the presented cases. However,

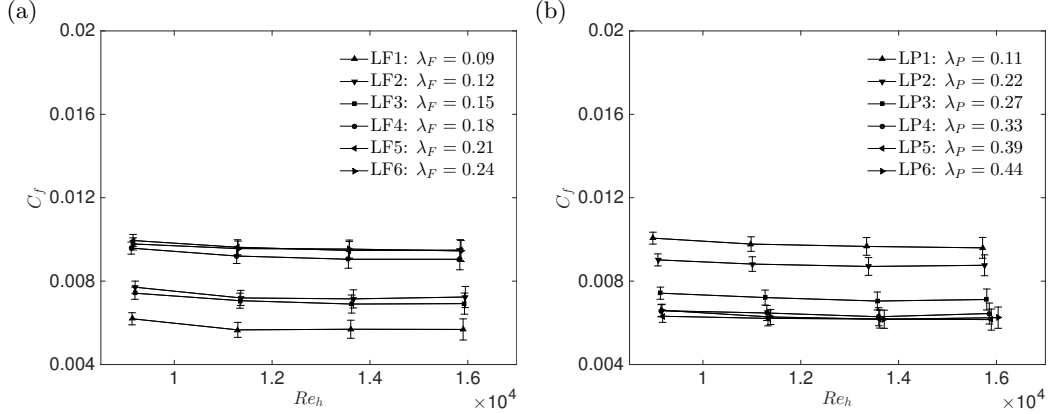


FIGURE 5. Skin friction coefficient, C_f , as a function of Reynolds number, as a function of (a) λ_F ($\lambda_P = \text{const} = 0.27$) and (b) λ_P ($\lambda_F = \text{const} = 0.15$).

these clearly showed Reynolds number dependance of the skin friction (i.e. transitionally rough regimes). Increasing the Reynolds number, nevertheless, C_f shows the plateaux described above, which is an indication that the “fully rough regime” is reached.

The validity of the Reynolds-stress method (via fitting of equation 2.1) for the skin friction determination can be established by comparing the results with the direct friction-balance measurements. The value of C_f as a function of the normalised momentum thickness, θ/y_0 , is shown in figure 6. In particular, figure 6(a) shows results for the indirect method (via equation 2.1) and figure 6(b) using the direct method (friction-balance) for skin-friction estimation. This type of plot was first proposed by Castro (2007) and will allow us to estimate if the current data agrees with previous findings. Most of the results from rough-wall studies have been found to scatter around the two curves (for different values of wake parameter Π) shown in figure 6 (Castro 2007). It can be seen that our data using both methods are consistent with previous results in the literature. The indirect measurements results (via equation 2.1) compare well with the direct measurements (within 10%) given the uncertainty in determination of the skin-friction velocity (Acharya *et al.* 1986) and the log-law boundaries used to determine the roughness length (Segalini *et al.* 2013). The skin friction values obtained via the floating-element drag-balance are used in all our analysis. Relevant boundary-layer characteristics of all the cases are given in table 1. It can be seen from the table that all cases have $y_0^+ \geq 10$ and hence we conform to the revised estimates for fully-rough conditions.

Figure 7(a) shows the mean velocity profiles in inner scales for the different cases of λ_F at fixed λ_P . It can be seen that, compared to a smooth-wall case (equation 1.1 with $d = 0$, $B = 5$ and $\Delta U^+ = 0$), the roughness is responsible for a uniform downward shift of the log-region, as expected. The plain baseboard case, referring to the wind tunnel floor being covered only with baseboard but no bricks, is also reported for comparison. It shows that the presence of the blocks (case LF1 to LF6) is indeed responsible for generating a further shift of the log-law compared to the baseboard case. Figure 7(b) shows the behaviour of the mean velocity profiles for the different λ_P cases. Once again the roughness is responsible for a downward shift of the log-law region. According to Jimenez (2004), the log-layer over a rough surface should remain intact only for $h/\delta < 1/40$, so that the velocity profiles should be self-similar in the other region. However, when $h/\delta > 1/40$, a situation similar to flows over obstacles is encountered and the universality of velocity statistics breaks down. A discussion on the critical relative roughness height, h/δ , for which Townsend’s similarity hypothesis fails is outside the scope of this study. However,

Data set	λ_F	λ_P	$\delta^*(mm)$	$\theta(mm)$	$d(mm)$	$U_e(m/s)$	$U_\tau(m/s)$	Re_τ	δ/h	δ/h_s	y_0^+
LF1	0.09	0.27	19	13	11.2	11.57	0.65	5110	10	69	10
LF2	0.12	0.27	27	16	6.7	11.61	0.73	6313	11	31	28
LF3	0.15	0.27	26	16	9.1	11.65	0.71	6140	11	36	24
LF4	0.18	0.27	28	16	8.5	11.53	0.80	6919	11	16	61
LF5	0.21	0.27	32	18	7.0	11.63	0.82	7092	11	13	77
LF6	0.24	0.27	31	17	8.3	11.64	0.81	7005	11	14	69
LP1	0.15	0.11	35	19	5.7	11.54	0.81	7642	12	12	89
LP2	0.15	0.22	30	17	7.7	11.57	0.78	6746	11	16	60
LP3	0.15	0.27	28	16	11.4	11.58	0.71	6140	11	30	29
LP4	0.15	0.33	27	16	10.4	11.50	0.67	5794	11	31	26
LP5	0.15	0.39	24	15	11.1	11.49	0.66	5189	10	39	18
LP6	0.15	0.44	21	13	11.1	11.42	0.67	5268	10	54	14

TABLE 1. Relevant experimental parameters for frontal and plan solidities variation. U_τ values reported are obtained via floating-element drag-balance. This value of U_τ is used in all subsequent analysis. The aerodynamic parameters are calculated through a log-law fit with $\kappa = 0.38$ in the range $1.5h \leq y \leq 0.2\delta$. The U_e values reported herein are from the PIV results.

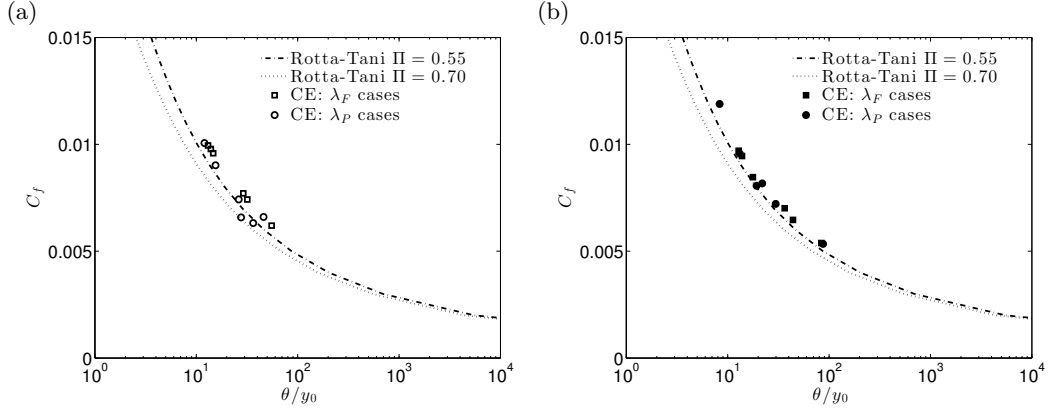


FIGURE 6. Variation of C_f as a function of θ/y_0 for (a) Reynolds-stress method (via fitting of equation 2.1) and (b) drag-balance method (direct measurement). Dot and dashed-dotted curves refer to the standard two-parameter family results with wake strength of $\Pi = 0.55$ and 0.7 . The roughness length, y_0 , is calculated via a least-square-fit procedure for $1.5h < y < 0.2\delta$.

it can be clearly observed in figure 7 that a log-law seems to be well-defined for all velocity profiles. This is not unique given that previous studies (Castro 2007; Amir & Castro 2011, amongst others) have shown that some rough-walls conform to outer-layer similarity up to $h/\delta \approx 0.2$, which is even more severe than the morphologies presented herein. It is therefore anticipated that Jimenez's criterion seems to be unnecessarily restrictive, given that these surfaces show mean velocity similarity.

To further quantify the effect of the surface morphology on the bulk drag, the roughness function can be calculated. Figure 8 shows the normalised roughness length, y_0/h , as a function of both solidities. It is shown in figures 8(a) & (b) that the behaviour of the roughness length as a function of frontal and plan solidity is drastically different. Figure 8(a) shows that the roughness length (which is related to the total drag) increases in the sparse regime, and indicates a marginal decrease after the peak for increased values of

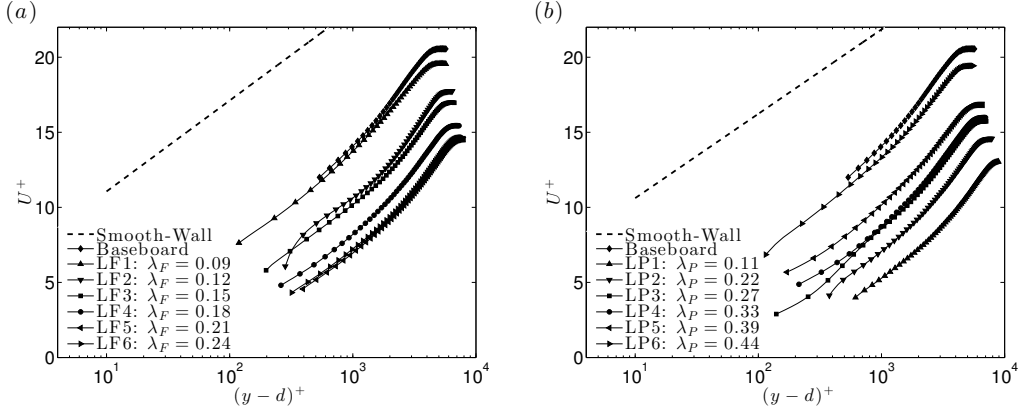


FIGURE 7. Mean velocity profiles in inner scales as a function of (a) λ_F ($\lambda_P = \text{const} = 0.27$) and (b) λ_P ($\lambda_F = \text{const} = 0.15$). Solid lines represent the real data resolution whilst markers are spaced every five vectors for clarity.

frontal solidity, as in Leonardi *et al.* (2003) and Leonardi & Castro (2010). Within the range of solidity explored herewith, the bulk drag seems to reach a peak at $\lambda_F = 0.21$ for a fixed $\lambda_P = 0.27$. The roughness length results, in figure 8(a), closely follow the skin friction trends as a function of both the solidities, as shown in table 1. The drag-peak location herein is partially in contrast with previous studies, for which it was found at $\lambda_P \equiv \lambda_F \approx 0.15$ (Hagishima *et al.* 2009; Leonardi & Castro 2010; Kanda *et al.* 2004) and $\lambda_P \equiv \lambda_F \approx 0.16$ (Santiago *et al.* 2008; Coceal & Belcher 2004). These differences are perhaps not surprising giving the high uncertainty in the fitting procedure which results in the visible scatter of the data for different studies in figure 8(a), even when values of similar frontal and plan solidity are considered. This scatter could also be partly due to the fact that prescribing a set of λ_F and λ_P values, results in a non unique mapping of a roughness geometry - i.e. different geometries can generate the same combination of solidities. Furthermore all the previous studies used cubical elements, for which $\lambda_F \equiv \lambda_P$ while in the current experiment the plan solidity has been kept constant. Additionally, the comparable studies also have different h/δ values. Finally, given that the current dataset is a collection of discrete points, the reported peak at $\lambda_F = 0.21$ only implies that the effective peak value should be located somewhere in the range $\lambda_F = 0.18 - 0.24$ which is consistent with previous findings. It is important to note that this result only apply within $0.11 \leq \lambda_F \leq 0.27$, as no information is available outside this range.

It must be highlighted that the existence of this peak in the bulk drag is not necessarily in agreement with Macdonald's prediction, which prescribes a monotonic increase of the drag as the element's frontal density increases. Given the scatter in data, it is difficult to interpret this further. However, as emphasised previously, in the current experiment the influence of frontal and plan solidity have been decoupled keeping one of the two parameters fixed at a time and trend does suggest a peak in drag for λ_F at a given λ_P . The behaviour of the bulk drag with plan solidity is shown in figure 8(b) and it reveals a completely different feature. The roughness length is found to monotonically decrease, as the plan density increases. It is not possible to compare this behaviour with previous studies for which $\lambda_F \equiv \lambda_P$, since in that case changes in one solidity parameter result in modifying the other one.

It is expected that the roughness length should increase as the elements' frontal density increases, reaching a peak beyond which it should decrease, for further increase in roughness density. This expected behaviour is verified in the case of frontal density variation,

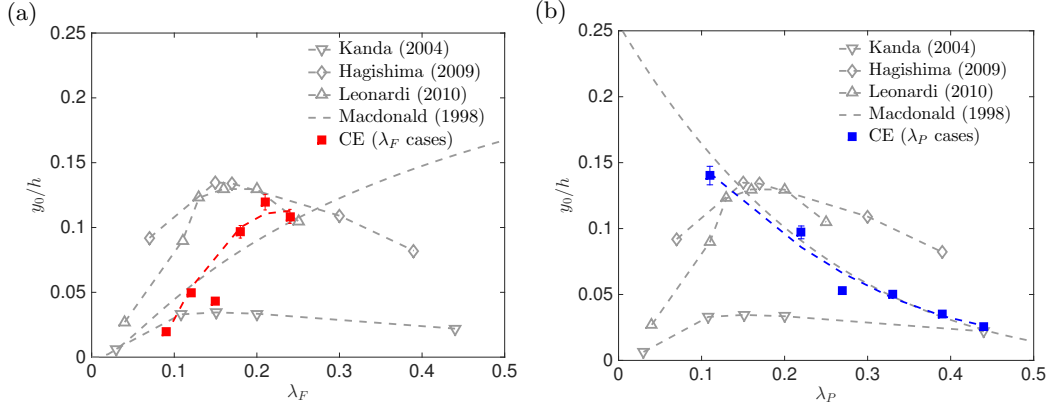


FIGURE 8. Normalised roughness length, y_0/h , as a function of (a) λ_F and (b) λ_P . Current experiment refers to values obtained by log-law least-square fit between $1.5h < y < 0.2\delta$.

which shows a peak for $\lambda_F = 0.21$. An increase in frontal solidity (cases LF1 to LF6) increases the frontal blockage, reducing the free-space available for the flow, forcing it up and over the elements, and hence resulting in a drag increase. However, for plan solidity cases, the bulk drag monotonically decreases with increasing λ_P . This could be due to the fact that progressive increase of the plan area at fixed λ_F , and hence at fixed unit wall-parallel area (as in cases LP1 to LP6) results in a transition from “k-type” to “d-type” roughness. This progressive transition results in a decrease in drag with increasing plan solidity. It must be noted that we use the “k-type” or “d-type” terms only to relate to the flow mechanisms that are shown to be associated with these classifications and not to the type of roughness. The flow behaviour between the roughness elements, following Grimmond & Oke (1999), depends upon the ratio between the roughness height, h , and the average streamwise spacing between elements, W_c (the width of the channel between subsequent elements). An “isolated flow regime” is expected when $h/W_c < 0.3$, a “wake interference regime” for $0.3 < h/W_c < 0.65$ and a “skimming flow regime” for $h/W_c > 0.65$. It is easy to verify from figure 3(b) that, while the average spacing is almost constant for the λ_F variation, the same is not true for the λ_P cases. In the latter, in fact, this spacing decreases from case LP1 to LP6. This is because of the necessity to keep the unit wall-parallel area fixed, enforcing changes in plan solidity at fixed λ_F . Therefore, this results in cases LF1 to LF6 all belonging to the “wake interference regime” ($h/W_c \approx 0.39$), while a transition between the “isolated flow regime” toward the “skimming regime” is to be expected between cases LP1 and LP6 (h/W_c ranging between $0.27 - 0.55$).

It is certainly possible under some circumstances that an increase in frontal blockage can be in competition with the transition from “k-type” to “d-type” (i.e. changes in h/W_c). In those cases, the bulk drag of different surfaces with different λ_F and λ_P can be a constant. Alternately, depending on the pattern of the repeating unit, the drag could even decrease with increasing λ_P . A sketch that describes the scenarios discussed above is shown in figures 10 and 11 respectively. Figures 10(a) to (c) show a progressive increase of the spanwise blockage in the flow. This results in the flow raising upward toward the top of the elements and over them (i.e. “k-type”) resulting in an increase in bulk drag. Figure 11(d) to (f) shows a representation of the transition mechanism with elements in subsequent repeated units becoming closer to each other, resulting in the formation of stable vortices in the grooves between the elements. This ensures that the eddy shedding from the elements into the flow, is progressively more negligible. These

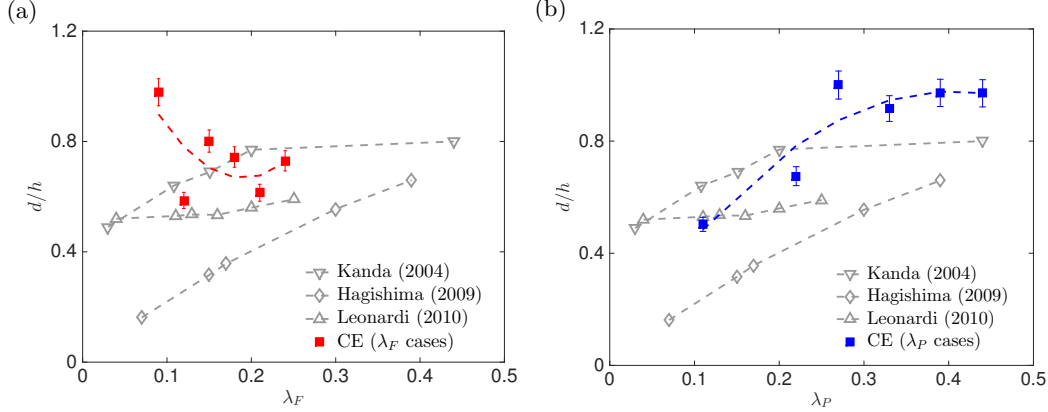


FIGURE 9. Normalised zero-plane displacement, d/h , as a function of (a) λ_F and (b) λ_P . Current experiment refers to values obtained by log-law least square fit between $1.5h < y < 0.2\delta$.

stable recirculation vortices are effectively isolating the elements from the flow (i.e. “d-type”), which rides almost undisturbed over the elements resulting in a reduction of the generated drag.

In addition to the roughness length, the values of the zero-plane displacement, d , as a function of frontal and plan solidities have also been calculated and are shown in figures 14(a) & (b) for frontal and plan solidities, respectively. Since a value of $d > h$ would be physically meaningless (Jackson 1976), these values are forced to be $d = h$ as in Iyengar & Farell (2001). It is clearly visible in figure 14(b) that the virtual origin increases with an increase in plan solidity till it approaches its asymptote at $d = h$. The latter is qualitatively consistent with previous studies which have shown that the zero plane displacement tends to assume larger values (i.e. d tends to h) as the plan solidity increases (Kanda *et al.* 2004; Hagishima *et al.* 2009; Leonardi & Castro 2010). This trend is also consistent with the predictions from Macdonald (1998). Although the quality of the fit deteriorates, an opposite trend seems to emerge in figure 14(a). For a frontal solidity variation, the virtual origin decreases as λ_F increases. It must be noted that the trend followed by previous studies does not capture the conditions of the present experiments - the data was obtained over cube roughness and hence the behaviour with λ_F is exactly the same as for λ_P .

3.2. Effect of surface morphology on the roughness sublayer

Given the high relative roughness ($h/\delta \approx 0.1$), flow heterogeneity along the spanwise direction are to be expected at least within the roughness sublayer. This region has usually been identified to extend up to five roughness heights (Cheng & Castro 2002a; Flack *et al.* 2007). To investigate the flow heterogeneity, results from stereoscopic PIV measurements in the wall-normal-spanwise (y, z) plane are presented. Contour plots of mean streamwise velocity are shown in figure 12 for both λ_F and λ_P cases on the left and right column, respectively. The extent of the field of view has been cropped so that two to three entire repeated units are contained in the presented graphs, hence allowing the effect of the edges of the single unit to be taken into account. To facilitate the interpretation of the figures, the bricks locations are also highlighted in the figure. Three/four bricks combined represent one repeated unit for the λ_F cases while only two bricks combine to form the λ_P cases (as in figure 3(b)) keeping the overall size of the FOV roughly the same. Full black bricks stand for elements in the measurement plane whilst dashed lines

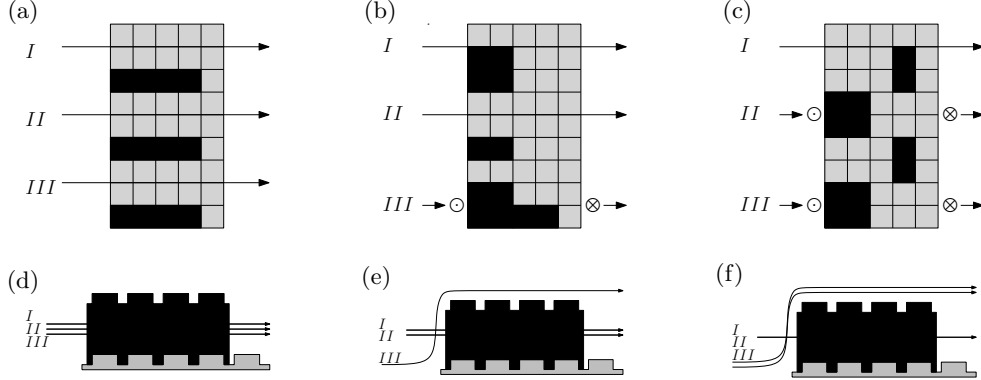


FIGURE 10. Different elements' field patterns and associated flow regimes for increasing λ_P . LF1 (left), LF3 (centre) and LF5 (right). Symbols \odot stand for arrows pointing toward the reader and symbolise path lines of particles that deviate upward, symbols \otimes stand for path lines of particles that deviate downward. Flow is left to right.

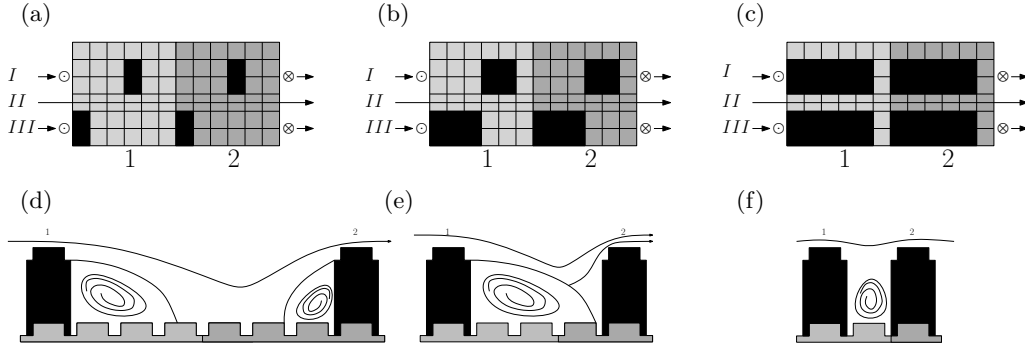


FIGURE 11. Different elements' field patterns and associated flow regimes for increasing λ_P . LP1 (left), LP3 (centre) and LP6 (right). Symbols \odot stand for arrows pointing toward the reader and symbolise path lines of particles that deviate upward, symbols \otimes stand for path lines of particles that deviate downward. Flow is left to right. Light and dark grey areas in (a), (b) and (c) indicate subsequent elements' repetitive units.

represent bricks out of the measurement plane, yet in the same repeated unit. For the frontal solidity cases (in figure 12 on the left), a mean flow distortion due to the elements' field for low values of y/h is clearly visible. This effect is much greater for the λ_F cases than for the λ_P cases (in figure 12 on the right). For all cases, the contour lines appear reasonably flat farther away from crest of the roughness elements suggesting a localised effect of roughness. Moreover very little differences in mean streamwise velocity across the span are found above $5h$ height, which is therefore suggested to be the upper edge of the roughness sublayer.

There is very little information available in the literature on the definitions used to determine the depths of the inertial sublayer (ISL) and roughness sublayer (RSL), and this is subject of on-going debate (Cheng & Castro 2002*b,a*). However, there is some consensus on the necessity to look at the Reynolds shear stress characteristics. It is outside the scope of this paper to further investigate the best way to define these regions and therefore definitions from previous literature are followed (Raupach *et al.* 1991; Cheng *et al.* 2007; Cheng & Castro 2002*b*). The upper boundary of the RSL is defined as the location where the spatially-spanwise-averaged wall-normal profiles converge to within 10%. Similarly, the ISL is defined as the region where the vertical variation of the

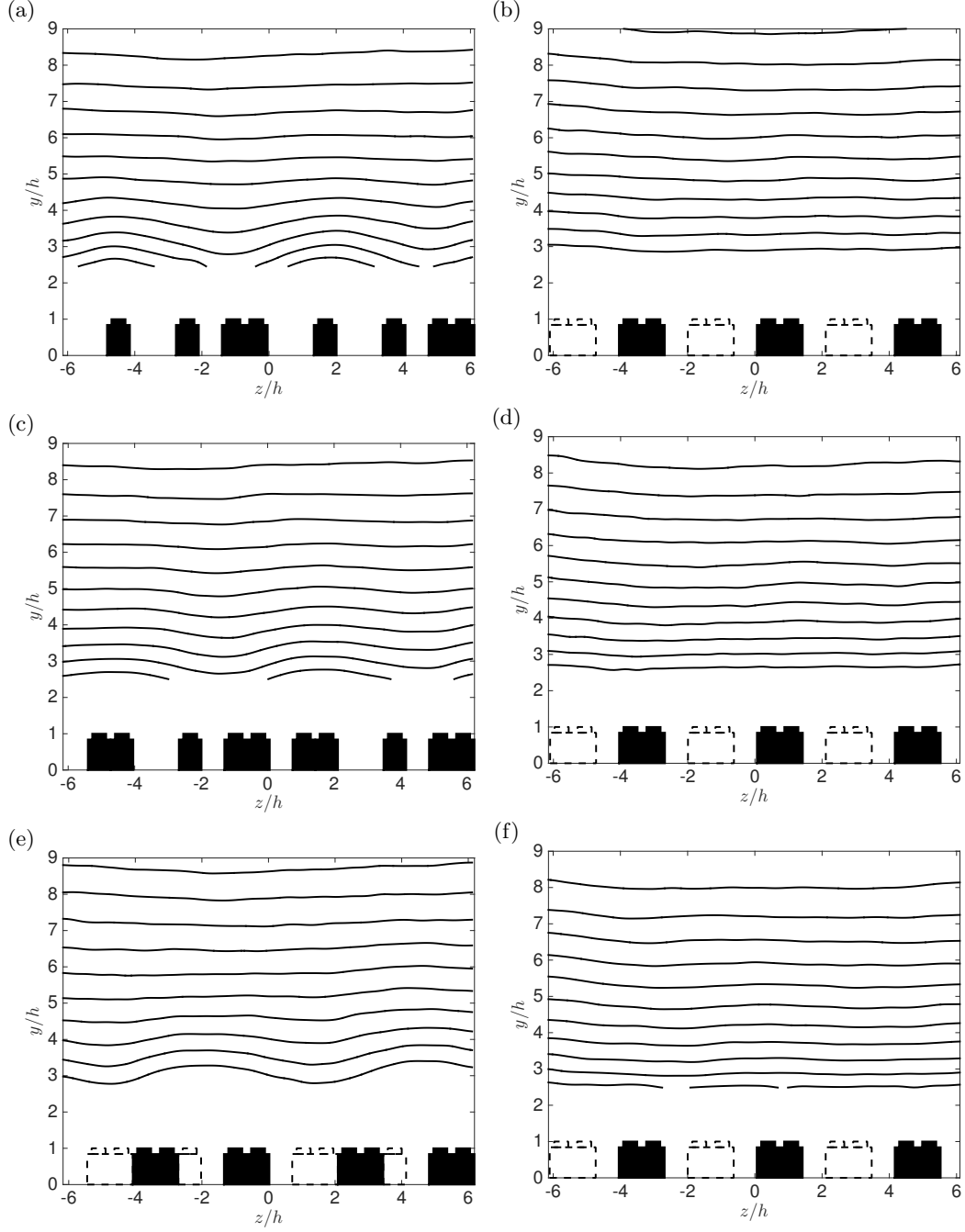


FIGURE 12. Mean (ensemble-averaged) streamwise velocity contours, U , in the (y, z) plane for sparse (top), medium (centre) and dense regimes (bottom) as a function of λ_F ($\lambda_P = \text{const} = 0.27$) on the left and λ_P ($\lambda_F = \text{const} = 0.15$) on the right. Lowest contour level $U/U_e = 0.5$, contour spacing of 0.05. Bricks in the measurement plane are represented in full black, whilst bricks out of the measurement plane in the same repeated unit are identified by dashed lines. The mean flow is in to the plane along positive x axis.

shear stress may be neglected or its variation is within a certain threshold (i.e. $< 5\%$). Both these regions are defined relative to the mean (ensemble) Reynolds shear stresses spatially-averaged across the FOV.

Figure 13 shows the extent of the above-mentioned regions within the boundary layer for frontal and plan solidity variation on the left and right column, respectively. Grey solid marks indicate profiles along the spanwise direction across the entire FOV, which included more than one complete repeated unit. In all these graphs, the roughness height is defined from the bottom of the legoboard (i.e. the actual wall $y = 0$). The height of the roughness elements is marked by a dashed black line and it is constant. For all cases, the extent of the RSL is found to be confined to $\approx 5h$ which is consistent with previous findings (Flack *et al.* 2007). Moreover, for the frontal solidity cases ((a), (c) and (e)) the RSL depth seems to reach a minimum to then increase again as the λ_F increases. Therefore, the extent of this region follows a reverse trend when compared to that of the roughness length (or bulk drag) behaviour (in figure 8(a)). It seems that an increase in drag results in a decrease of the RSL depth and vice-versa. This same trend is found for the plan solidity cases ((b), (d) and (f)) where the extent of the RSL seems to increase with the solidity, whilst the drag was found to decrease (see figure 8(b)). The above-mentioned observations are summarised in figures 14(a) & (b) that show the variation of RSL and ISL as a function of λ_F and λ_P , respectively. It is important to note that differences can arise depending on the choice of threshold used to define the regions, however, the trend across all cases was found to be unaffected by the magnitude of the threshold.

It is worth noting that recent studies (Mejia-Alvarez & Christensen 2013; Barros & Christensen 2014) have experimentally shown that mean flow heterogeneities exist in the spanwise-wall-normal plane of rough-wall turbulent boundary layers, particularly over a complex roughness which exhibited large-scale streamwise-elongated patches of elevated height. This heterogeneity extend outside the RSL all the way to the freestream. This phenomenon is due to the presence of spanwise-wall-normal mean secondary flow in the form of mean streamwise vorticity associated with counter-rotating boundary layer-scale circulations (Barros & Christensen 2014). The latter induces regions of high and low momentum (HMPs and LMPs respectively). Such patterns are also in agreement with the behaviour found by Reynolds *et al.* (2007) for flow over regular cubical roughness. The mean-flow heterogeneity in both cases were here found to be in correspondence of the periodic spanwise roughness spacing. However, although some of the cases herein in examination resemble Barros & Christensen (2014)'s geometry (in particular case LP6), the current investigation found no trace of this heterogeneity in the freestream. This is in disagreement with the aforementioned studies and it is perhaps due to the fact that the spanwise spacing between elements in the cases examined in the current study is not significant enough to induce this characteristic behaviour. Further exploration of this aspect is outside the scope of this work.

3.3. Proper orthogonal decomposition

To explore the spatial characteristics and the behaviour of the flow and its dependence on wall morphology, a snapshot based proper orthogonal decomposition (POD) analysis has been carried out (Berkooz *et al.* 1993). This technique generates a basis for modal decomposition of ensemble of instantaneous fluctuating velocity fields and provides the most efficient way of identifying the motions which, on average, contain a majority of the turbulent kinetic energy (TKE) in the flow. The energy contribution of the singular value across the modes, hence its shape, depends on the local spatial resolution of the data set, as discussed in Pearson *et al.* (2013). This is because the energy content of each

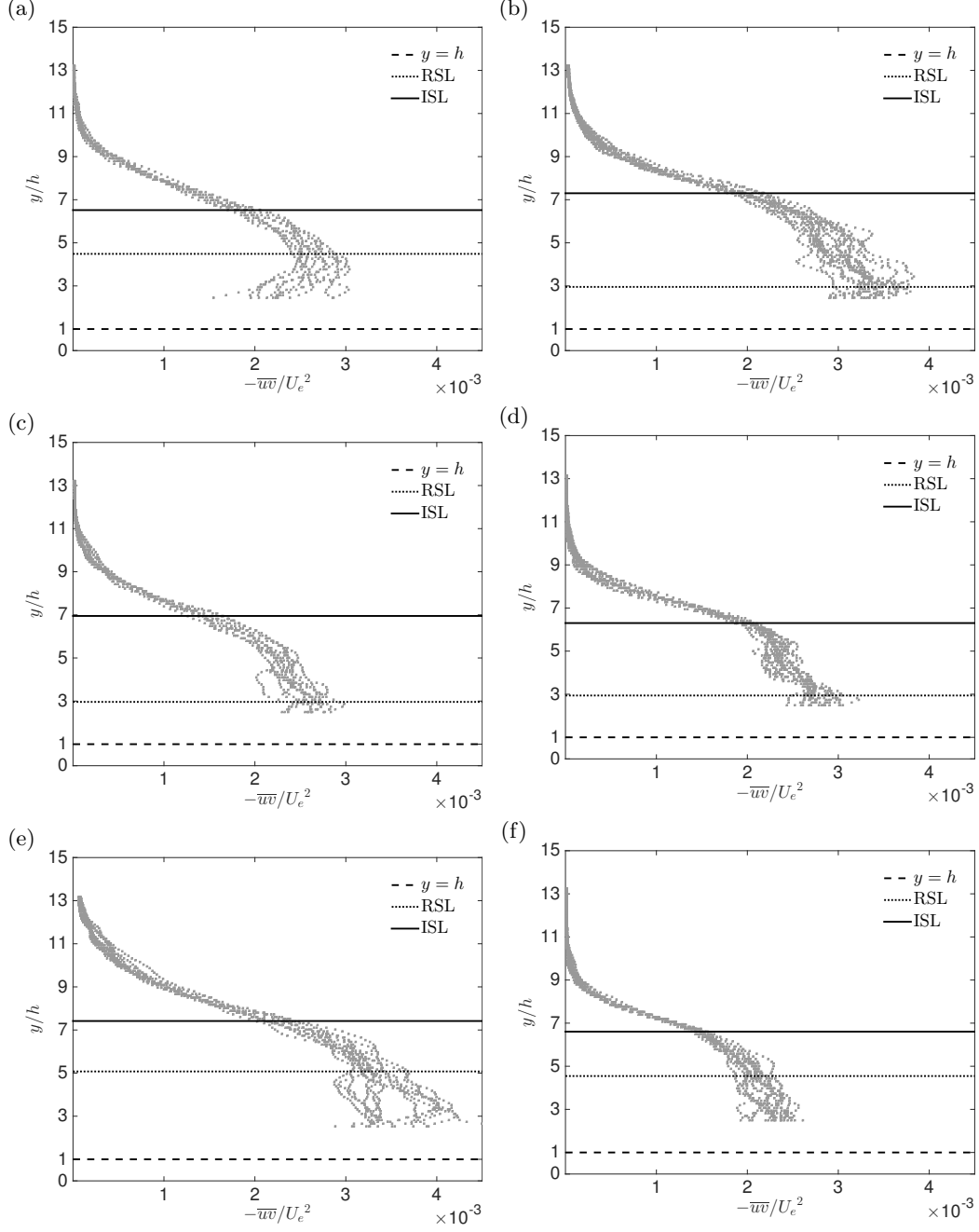


FIGURE 13. Normalised Reynolds shear stress profiles, $-\overline{uv}/U_e^2$, for sparse (top), medium (centre) and dense regimes (bottom) as a function of λ_F ($\lambda_P = \text{const} = 0.27$) on the left and λ_P ($\lambda_F = \text{const} = 0.15$) on the right. Grey solid symbols represents the shear stress data (only one in every five vectors is shown for clarity), dashed black line shows $y = h$ (canopy layer) whilst dotted and solid black lines represent the extent of the RSL and ISL respectively.

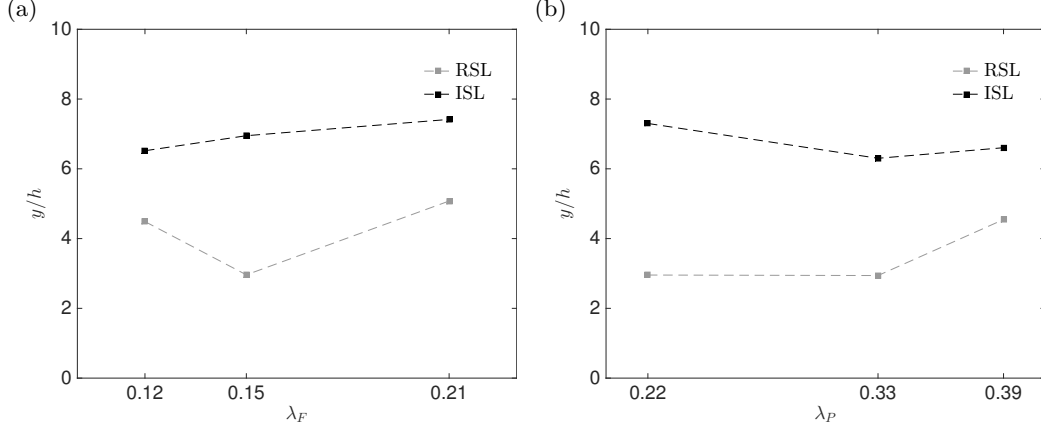


FIGURE 14. RSL and ISL depths as a function of (a) λ_F ($\lambda_P = \text{const} = 0.27$) and (b) λ_P ($\lambda_F = \text{const} = 0.15$). Only available 3D data sets are presented.

i th mode depends on the smallest resolved scale in the flow (i.e. in the data set). The global resolution of the current 2D data set ranges in between 30 to 40 wall-units, due to differences in the skin friction velocity generated by the different surface morphologies. This results in a variation of the Kármán number in the range of $Re_\tau \approx 4900 - 7500$. For this reason, the current data set has been filtered with a low-pass Gaussian filter designed to match the local resolution at $l_{2D}^+ = 45$. Moreover, the FOV across the different cases is also matched to the region $-0.6\delta < x < 0.6\delta$ in the streamwise and $1.5h \leq y \leq \delta$ in the wall-normal direction to allow for meaningful comparisons. The result presented herein were obtained performing the POD calculation over the combined (u, v) data.

Figure 15 shows contour plots of the shape of the first four energetic POD modes. These are specific to one case (i.e. LF2, $\lambda_F = 0.09$, $\lambda_P = 0.27$), although were found to be consistent (and indistinguishable) in shape and order across all surface morphologies, regardless of the regime. For comparison the first four modes for LP2 ($\lambda_F = 0.15$, $\lambda_P = 0.11$) are shown in figure 16. The rest of the results are omitted for the sake of brevity. This similarity is remarkable considering the different patterns adopted to generate the morphologies (see figure 3(b)) and is a testimony of some form of universality across rough-walls. Regions of high and low streamwise momentum (or vice-versa), which are highlighted in black and white respectively are clearly visible in figure 15 (although the colorbar is arbitrary). The shape of the most energetic mode (mode 1) is characterised by an elongated large-scale high (or low) momentum region. Mode 2 embodies instead an inclined shear layer that separates a high-momentum region below it from a low-momentum region appearing above it (or vice-versa since the sign of the values is arbitrary and will depend on the eigenvalue itself). Similar shape is assumed by mode 3 where the inclination of the shear layer is reversed compared to the flow direction. Mode 4 is dominated by three distinctive regions: two localised low-momentum regions are separated by an elongated forward-leaning streamwise high-momentum region. As Adrian *et al.* (2000) discussed, while POD modes are not representative of the actual coherent structures present in the flow, but more of the energy of those structures, they do provide a qualitative glimpse of the dominant flow field associated with each mode and its variability from one mode to another. A trend of increasingly smaller structures for higher modes is generally found throughout all cases. Therefore, the low-order modes tend to be associated with large-scale structure, whilst the higher-order modes are representative of increasingly smaller scales. Comparison of the first ten modes across all

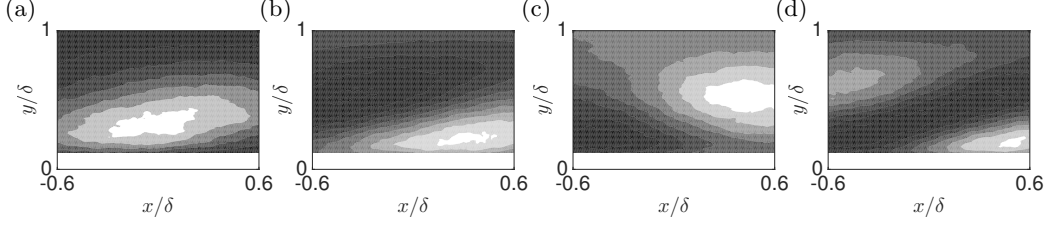


FIGURE 15. First four low-order POD modes for LF2 case. Flow is left to right. POD modes are calculated on the combined (u, v) field.

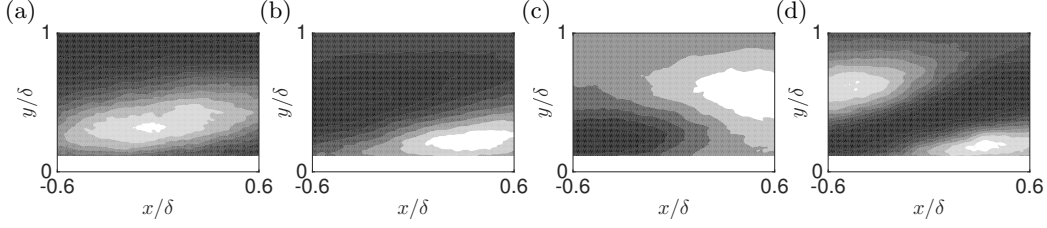


FIGURE 16. First four low-order POD modes for LP2 case. Flow is left to right. POD modes are calculated on the combined (u, v) field.

the morphologies show identical mode shapes indicating that there is a degree of structural similarity regardless of roughness morphology (here omitted for brevity). Yet, the aerodynamic parameters are very different across the cases.

The differences in flow structure that perhaps lead to the differences in the aerodynamic parameters might not be evident when the structure of the entire boundary layer is examined using analysis of POD modes. It might be more meaningful to employ this analysis confined to the roughness sublayer so as to isolate any difference in the flow structures between the different roughness morphologies.

3.3.1. Effect of surface morphology of the structure of the RSL

To further investigate the effect of the surface morphology in the near-canopy (or near-wall) layer, the same POD analysis can be carried but this time only focussing on the roughness sublayer. As shown in the previous sections, this region appears to be where the roughness effect is confined. For this purpose, the POD analysis was carried out, as in the previous case, but the field-of-view was restricted to the roughness sublayer: $-0.6\delta < x < 0.6\delta$ in the streamwise and $1.5h < y < 5h$ in the wall-normal direction. The chosen vertical limit is based on the consensus in literature as the extent of the roughness sublayer ($y/h \approx 3 - 5$ as in Flack *et al.* (2007)). Figure 17 shows the result of this procedure for the frontal solidity cases. The top row, (a) to (d), shows results for the sparse regime (i.e. LF2) while the bottom row, (e) to (h), shows similar plots in the dense regime (i.e. LF5). The mode shapes appear to be qualitatively the same in this “near-canopy” fields, however, it must be highlighted that, for ease of readability, the y-axis is “stretched” compared to previous cases in figures 15 and 16. The only difference between the two regimes (i.e. sparse vs. dense) is that modes 3 and 4 switch their order between sparse and dense regimes. Mode 4 in the sparse regime seems to correspond to mode 3 in the dense and vice-versa. This suggests that the relative energy content in mode 3 compared to mode 4 is higher in one case and is lower in the other. The mode number where this change in mode shape occurs is named the “cut-off” mode and can be taken to represent the breakdown of the spatial similarity of the flow within the roughness sublayer. Note that this breakdown was not present in the full-field modes, where the

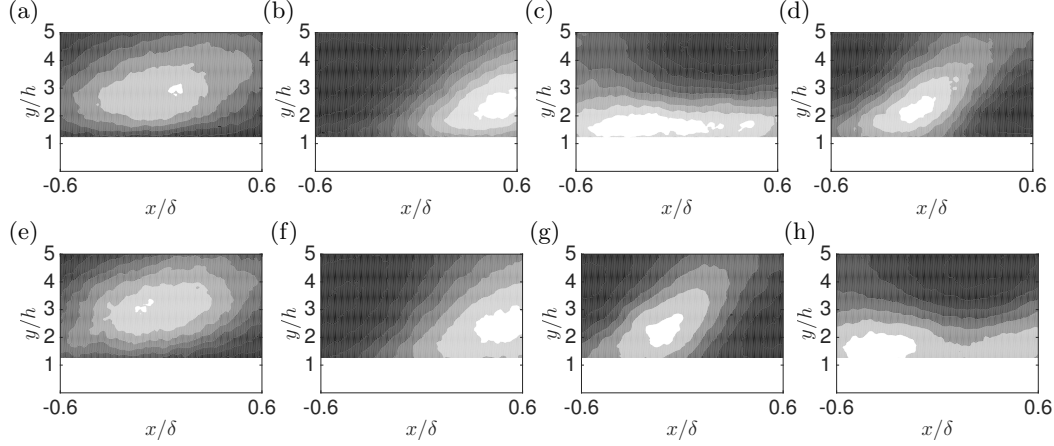


FIGURE 17. First four low order POD modes in the roughness sublayer for (a-d) sparse regime and (e-h) dense frontal solidity regime. Flow is left to right. POD modes are calculated on the combined (u, v) field. Note that the aspect ratio of these figures have been changed to highlight the roughness sublayer. The wall-normal direction has been stretched compared to figures 15 and 16.

energy in the outer region seemingly dominates the energy contained in the roughness sublayer. Physically, this means that a redistribution of energy across scales has taken place, therefore, the energy relevant scales are different in size/shape for the different regimes. An increase in frontal solidity results in redistributing the energy towards scales that are inclined to the wall (mode 3 compared to mode 4). A similar POD analysis for the plan solidity cases is shown in figure 18. It is noticeable that the mode shapes appear similar to previously discussed full-field cases and that for this solidity variation, the energy redistribution is absent. This suggests that there is a higher degree of spatial similarity in the energy containing motions in the roughness sublayer across the different plan solidities.

These findings are consistent with the hypothesis presented in § 3.1. When the frontal solidity increases, the flow is progressively forced up and over the elements, hence a degradation of the local coherency is observed at high λ_F values, introducing energy in to scales that are inclined to the wall, which is revealed by the appearance of the “cut-off” mode. This process is entirely absent for λ_P variations as the frontal blockage is fixed, hence the cut-off mode does not appear in the RSL as the flow over the canopy is not significantly altered.

3.3.2. Effect of surface morphology on energy distribution across scales

Table 2 shows the fractional turbulent kinetic energy (FTKE) contribution E_i , of the i th POD mode, ϕ_i , to the total TKE for the λ_F and λ_P cases. It can be seen that cases with lower λ_F tend to be characterised by lower energy content in the first POD mode. For example, mode 1 for the LF1 case contains only $\approx 20\%$ of the total energy, while for the LF3 and LF6 cases, its content reaches $\approx 22\%$ and $\approx 25\%$, respectively. This seems to suggest that the effect of an increased frontal solidity would be to redistribute the energy toward the lowest-order POD modes and therefore the larger-scales. It can also be inferred that the plan solidity cases present an opposite trend, where the first mode for the sparse case contains almost 26% of the total TKE while the contribution of the same mode for the medium and dense regimes (LP4 and LP6 cases for example) are only 21% and 22% respectively.

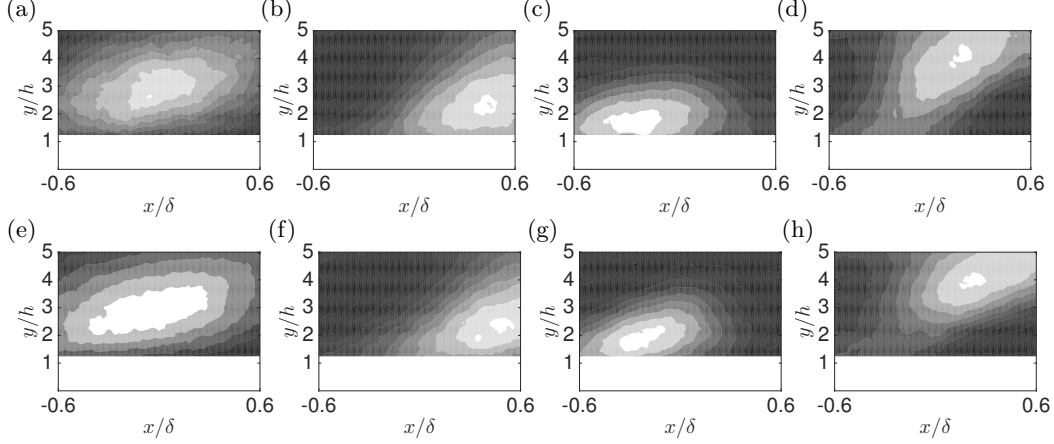


FIGURE 18. First four low order POD modes in the roughness sublayer for (a-d) sparse regime and (e-h) dense plan solidity regime. Flow is left to right. POD modes are calculated on the combined (u, v) field. Note that the aspect ratio of these figures have been changed to highlight the roughness sublayer. The wall-normal direction has been stretched compared to figures 15 and 16.

The cumulative turbulent kinetic energy (CTKE) is also presented in table 2. The CTKE of the first four modes contributes to $\approx 44\%$ of the total TKE for the densest case, LF6, while it only represent contributions of $\approx 37\%$ for the sparsest case, LF1. This further confirms that an increased frontal solidity results in a redistribution of energy towards lower modes. The opposite is true for the plan solidity cases. Similar trends can also be inferred from the number of modes necessary to contribute to the 50% of the total turbulent kinetic energy which is progressively lower for increased λ_F , while it increases for an increased λ_P . The reader's attention is also drawn on the fact that more than ≈ 600 modes are needed to capture 95% of the resolved TKE from the (x, y) plane PIV measurements in both cases. This reflects the complexity of these flows owing to the wide range of statistically important spatial scales present at these Reynolds numbers. These observations strongly suggest that the effect of an increased frontal solidity would be to redistribute the energy toward the highest energy POD modes. This could be an indication of an increase in coherency of the turbulent structures in the denser regimes. The opposite trend is found instead for the plan solidity variation. Increasing the λ_P redistributes the energy toward the higher-order modes, hence the smaller scales.

4. Conclusions

Experiments were conducted in the fully-rough regime on surfaces consisting of distributed LegoTM bricks of uniform height, with $h/\delta \approx 0.1$. Measurements were made on six different surface morphologies with systematically increasing λ_F at fixed λ_P and six surfaces with varying λ_P at fixed λ_F . This study examines the impact of surface morphology on wall-flows and could serve as benchmark data for validation of numerical simulations and other prediction models.

Results show, for the first time, the individual effect of frontal and plan solidities on various quantities in a controlled experiment. The non-dimensional roughness length reaches a peak value for $\lambda_F = 0.21$, while it monotonically decreases with increasing λ_P . This is contrary to previous results obtained by examining the flow over cube roughness where the effects of λ_F and λ_P are coupled. This also suggests that morphometric studies

Dataset	E_1	E_2	E_3	E_4	$\sum_{i=1}^4 E_i$	$0.5\sum_{i=1}^n E_i$
<hr/>						
LF1	20	8	5	4	37	10
LF2	22	9	6	4	41	8
LF3	22	10	5	4	41	8
LF4	23	9	5	4	41	8
LF5	25	10	5	5	44	6
LF6	25	9	5	5	44	6
<hr/>						
LP1	26	10	5	4	45	6
LP2	22	10	5	4	40	8
LP3	19	8	8	4	39	9
LP4	21	9	5	4	39	9
LP5	22	8	5	4	39	9
LP6	22	9	5	4	39	9

TABLE 2. Fractional TKE, E_i and cumulative TKE $\sum_{i=1}^n E_i$ content versus mode number. $0.5\sum_{i=1}^n E_i$ refers instead to the number of modes necessary to resolve the 50% of the turbulent kinetic energy contained in the flow. POD modes are calculated on the combined (u, v) field only within the roughness sublayer.

purely based on the geometry of roughness elements might not prove accurate and further studies are required to identify appropriate correlations relating the geometry of the wall to its generated drag.

An investigation into the depth of the roughness sublayer has revealed different behaviours for variation in frontal and plan solidities. The RSL depth, however, is found to follow the same trend in both cases, i.e., it appears to be inversely proportional to the roughness length (or bulk drag). A decrease in drag is usually accompanied by a thickening of the the RSL and vice versa.

The use of proper orthogonal decomposition analysis to infer spatial similarity of flows over different wall morphologies was also demonstrated. The overall flow structure and the relative energy content across the different roughness morphologies appears to be very similar. However the relative energy content in some energy-containing modes within the roughness sublayer changes with increasing frontal solidity while it remains the same with increasing plan solidity.

Finally, the relative energy content in the POD modes strongly suggest that the effect of increasing λ_F is to redistribute a larger proportion of the energy to the highest energy POD modes (i.e. the larger scales) while increasing λ_P redistributes the energy toward the smaller scales (or higher-order POD modes).

Acknowledgements

We gratefully acknowledge the support from the European Research Council under the European Union's Seventh Framework Programme (FP7/2007-2013) / ERC Grant agreement No. 277472. We also thank Lloyd's Register Foundation (LRF) as well as the Faculty of Engineering and the Environment for supporting this research.

REFERENCES

- ACHARYA, M, BORNSTEIN, J & ESCUDIER, M P 1986 Turbulent boundary layers on rough surfaces. *Experiments in Fluids* **4**, 33–47.
- ADRIAN, R J, CHRISTENSEN, K T & LIU, Z C 2000 Analysis and interpretation of instantaneous turbulent velocity fields. *Experiments in Fluids* pp. 275–290.
- ADRIAN, R J & WESTERWEEEL, J 2011 *Particle Image Velocimetry*. Cambridge University Press.
- AMIR, M & CASTRO, I P 2011 Turbulence in rough-wall boundary layers: universality issues. *Experiments in Fluids* **51**, 313–326.
- BARROS, JULIO M & CHRISTENSEN, KENNETH T 2014 Observations of turbulent secondary flows in a rough-wall boundary layer. *Journal of Fluid Mechanics* **748**, R1.
- BENEDICT, L H & GOULD, R D 1996 Towards better uncertainty estimates for turbulence statistics. *Experiments in Fluids* **22**, 129–136.
- BERKOOZ, G, HOLMES, P & LUMLEY, J L 1993 The proper orthogonal decomposition in the analysis of turbulent flows. *Annual Review of Fluid Mechanics* **25**, 539–575.
- CASTRO, I P 2007 Rough-wall boundary layers: mean flow universality. *Journal of Fluid Mechanics* **585**, 469–485.
- CASTRO, I P, SEGALINI, A & ALFREDSSON, P H 2013 Outer-layer turbulence intensities in smooth- and rough-wall boundary layers. *Journal of Fluid Mechanics* **727**, 119–131.
- CHENG, H & CASTRO, I P 2002a Near-wall flow development after a step change in surface roughness. *Boundary-Layer Meteorology* **105**, 411–432.
- CHENG, H & CASTRO, I P 2002b Near wall flow over urban-like roughness. *Boundary-Layer Meteorology* **105**, 411–432.
- CHENG, H, HAYDEN, P, ROBINS, A G & CASTRO, I P 2007 Flow over cube arrays of different packing densities. *Journal of Wind Engineering and Industrial Aerodynamics* **95** (8), 715–740.
- COCEAL, O & BELCHER, S E 2004 A canopy model of mean winds through urban areas. *Quarterly Journal of the Royal Meteorological Society* **130** (599), 1349–1372.
- EFROS, V 2011 Structure of turbulent boundary layer over a 2-D roughness. PhD thesis, Norwegian University of Science and Technology.
- FLACK, K A, SCHULTZ, M P & CONNELLY, J S 2007 Examination of a critical roughness height for outer layer similarity. *Physics of Fluids* **19** (9), 095104.
- FLACK, K A, SCHULTZ, M P & SHAPIRO, T A 2005 Experimental support for Townsend's Reynolds number similarity hypothesis on rough walls. *Physics of Fluids* **17** (3), 035102.
- GRIMMOND, C S B & OKE, T R 1999 Aerodynamic properties of urban areas derived, from analysis of surface form. *Journal of Applied Meteorology* **38**, 1262–1292.
- HAGISHIMA, A, TANIMOTO, J, NAGAYAMA, K & MENO, S 2009 Aerodynamic Parameters of Regular Arrays of Rectangular Blocks with Various Geometries. *Boundary-Layer Meteorology* **132**, 315–337.
- IYENGAR, A K S & FARELL, C 2001 Experimental issues in atmospheric boundary layer simulations: roughness length and integral length scale determination. *Journal of Wind Engineering and Industrial Aerodynamics* **89**, 1059–1080.
- JACKSON, P. S. 1976 The propagation of modified flow downstream of a change in roughness. *Quart. J. Roy. Meteorol. Soc.* **102**, 924–933.
- JACKSON, P. S. 1981 On the displacement height in the logarithmic velocity profile. *Journal of Fluid Mechanics* **111**, 15–25.
- JIMENEZ, J 2004 Turbulent flows over rough walls. *Annual Review of Fluid Mechanics* **36**, 173–196.
- KANDA, M, INAGAKI, A, MIYAMOTO, T, GRYCHKA, M & RAASCH, S 2013 A New Aerodynamic Parametrization for Real Urban Surfaces. *Boundary-Layer Meteorology* **148** (2), 357–377.
- KANDA, M, MORIWAKI, R & KASAMATSU, F 2004 Large-eddy simulation of turbulent organized structures within and above explicitly resolved cube arrays. *Boundary-Layer Meteorology* **112** (2), 343–368.
- KROGSTAD, P A & EFROS, V 2010 Rough wall skin friction measurements using a high resolution surface balance. *International Journal of Heat and Fluid Flow* **31** (3), 429–433.
- LEONARDI, S & CASTRO, I P 2010 Channel flow over large cube roughness: a direct numerical simulation study. *Journal of Fluid Mechanics* **651**, 519–539.
- LEONARDI, S, ORLANDI, P, SMALLEY, R J, DJENIDI, L & ANTONIA, R A 2003 Direct numerical

- simulations of turbulent channel flow with transverse square bars on one wall. *Journal of Fluid Mechanics* **491**, 229–238.
- MACDONALD, R W 1998 An improved method for the estimation of surface roughness of obstacle arrays. *Boundary-Layer Meteorology* **97**, 1857–1864.
- MANES, C, POGGI, D & RIDOLFI, L 2011 Turbulent boundary layers over permeable walls: scaling and near-wall structure. *Journal of Fluid Mechanics* **687**, 141–170.
- MARUSIC, I., MONTY, J P, HULTMARK, M & SMITS, A J 2013 On the logarithmic region in wall turbulence. *Journal of Fluid Mechanics* **716**, R3–1–R3–11.
- MEJIA-ALVAREZ, R & CHRISTENSEN, K T 2013 Wall-parallel stereo particle-image velocimetry measurements in the roughness sublayer of turbulent flow overlying highly irregular roughness. *Physics of Fluids* **25** (11), 115109.
- MILLWARD-HOPKINS, J T, TOMLIN, A S, MA, L, INGHAM, D & POURKASHANIAN, M 2011 Estimating Aerodynamic Parameters of Urban-Like Surfaces with Heterogeneous Building Heights. *Boundary-Layer Meteorology* **141** (3), 467–490.
- NIKURADSE, J 1933 Laws of flow in rough pipes. *NACA Tech. Memo.* 1292 .
- PEARSON, D S, GOULART, P J & GANAPATHISUBRAMANI, B 2013 Turbulent separation upstream of a forward-facing step. *Journal of Fluid Mechanics* **724**, 284–304.
- RAFFEL, M., WILLERT, C. & KOMPENHANS, J. 1998 *Particle Image Velocimetry*, 2nd edn. Berlin: Springer Verlag.
- RAUPACH, M R, ANTONIA, R A & RAJAGOPALAN, S 1991 Rough-Wall Turbulent Boundary Layers. *Applied Mechanics Reviews* **44** (1), 1–25.
- REYNOLDS, R T & CASTRO, I P 2008 Measurements in an urban-type boundary layer. *Experiments in Fluids* **45**, 141–156.
- REYNOLDS, R T, HAYDEN, P, CASTRO, I P & ROBINS, A G 2007 Spanwise variations in nominally two-dimensional rough-wall boundary layers. *Experiments in Fluids* **42**, 311–320.
- SANTIAGO, J L, COCEAL, O, MARTILLI, A & BELCHER, S E 2008 Variation of the Sectional Drag Coefficient of a Group of Buildings with Packing Density. *Boundary-Layer Meteorology* **128**, 445–457.
- SCHLICHTING, H 1937 Experimental investigation of the problem of surface roughness. *NACA TM* **823**, 1–60.
- SCHULTZ, M P & FLACK, K A 2005 Outer layer similarity in fully rough turbulent boundary layers. *Experiments in Fluids* **38** (3), 328–340.
- SEGALINI, A, ÖRLÜ, R & ALFREDSSON, P H 2013 Uncertainty analysis of the von Kármán constant. *Experiments in Fluids* **54**, 1460.
- WU, Y & CHRISTENSEN, K T 2007 Outer-layer similarity in the presence of a practical rough-wall topography. *Physics of Fluids* **19** (8), 085108.