



Effect of Early Exercise Engagement on Cardiovascular and Cerebrovascular Health in Stroke and TIA Patients: Clinical Trial Protocol

James Faulkner^{1*}, Jeremy Lanford², Danielle Lambrick³, Lee Stoner¹, Brandon Woolley¹, Terry O'Donnell^{4,5}, Lai-kin Wong² and Yu-Chieh Tzeng^{4,5}

¹School of Sport and Exercise, Massey University, Wellington, New Zealand

²Wellington Hospital, Riddiford St, Newtown, Wellington, New Zealand

³Institute of Food, Nutrition and Human Health, Massey University, Wellington, New Zealand

⁴Cardiovascular Systems Laboratory, University of Otago, Wellington, New Zealand

⁵Centre for Translational Physiology, University of Otago, New Zealand

Abstract

Objective: This study will investigate the efficacy of implementing either an early or delayed exercise intervention on cardiovascular and cerebrovascular health for newly diagnosed stroke and high-risk Transient Ischaemic Attack (TIA) patients.

Methods: The study is a randomized, parallel group clinical trial. Patients will be recruited from a local hospital based on inclusion/exclusion criteria. Participants will attend a baseline assessment within 2 to 7 days of stroke or TIA diagnosis. The assessment will consist of a series of cardiovascular and cerebrovascular primary and secondary outcome measures which will be assessed during some or all of the following: at rest, during a postural challenge, during a cerebral autoregulation and CO₂ reactivity test and/or during an incremental exercise test. Primary outcome measures include vascular risk factors (resting blood pressure, blood lipid profile etc), arterial stiffness of the carotid artery and blood velocity of the carotid artery and middle cerebral artery. Secondary outcome measures include cerebral autoregulation, physical fitness, and central and peripheral blood pressure. Following the baseline assessment, participants will be randomized to either a 12-week exercise programme which will commence within 7 days (early) or 28 days (delayed) of stroke/TIA diagnosis, or to a usual care control group. The exercise programme will consist of twice weekly, 60 minute, prescribed aerobic exercise sessions, and one 30 minute home-based aerobic exercise session. An identical assessment will be implemented post-intervention. Given the practical implications of the study, the clinical significance of early or delayed exercise engagement will be assessed for each outcome variable.

Conclusion: This study will advance our knowledge concerning the timing, importance and viability of exercise as a secondary prevention strategy for improving health outcomes for stroke and TIA patients. The study will provide much needed objective data for stroke and high-risk TIA patients concerning the physiological effect of regular exercise participation.

Keywords: Exercise; TIA; Randomized controlled trial; Secondary prevention; Peripheral vascular diseases; Arterial stiffness; Blood velocity

Introduction

Stroke is a leading cause of death in the Western World, and is a prominent cause of chronic disability, causing significant physical and cognitive impairments [1]. Stroke is broadly classified into two main types: ischaemic and haemorrhagic, with the former accounting for more than 85% of cases [1]. Approximately 15% of all strokes are heralded by a Transient Ischaemic Attack (TIA) [2]. TIAs are ischaemic brain attacks with focal cerebral or retinal symptoms that last <24 h, usually <1 h [3]. Meta-analyses have demonstrated the short-term risk of stroke after TIA to be between 3-10% at 2 days, and 9-17% at 90 days [1].

Many people who present with a TIA have predisposing modifiable vascular risk factors such as hypertension, tobacco use, diabetes mellitus, hyperlipidaemia, obesity and physical inactivity [4]. The primary preventative strategy used to reduce the risk of a recurrent stroke or TIA includes the prescription of anti-platelet- or anti-coagulation agents, as well as blood pressure- and lipid lowering treatments [5]. However, it has been suggested that 80% of recurrent vascular events could be prevented through a comprehensive multi-factorial lifestyle strategy which may include the implementation of physical activity, dietary advice and lifestyle modification [6]. Exercise-based Cardiac Rehabilitation (CR), which utilises a multi-factorial strategy, has been shown to improve each of the aforementioned risk

factors (i.e., improved blood pressure and blood lipid profile), and reduce morbidity and mortality among Coronary Artery Disease (CAD) patients [7].

To date, a limited number of non-pharmacological interventions for secondary prevention of stroke following TIA have been investigated [8], with only two Randomized Controlled Trials (RCT) examining the efficacy of regular physical activity participation [7,9]. The beneficial effect of regular exercise participation, implemented within the acute or sub-acute phase, has been shown with improvements in vascular risk factors (i.e., blood pressure, total cholesterol) and aerobic fitness in TIA [6,9] and ischaemic stroke patients [7]. However, the RCTs implemented by Lennon and Blake [7] and Faulkner et al. [9] did not explore a number of physiological markers that may serve to enhance our understanding of the effects of exercise on cardio- and

***Corresponding author:** James Faulkner, School of Sport & Exercise, Massey University, Wellington, Private Bag 756, 6140, Wellington, New Zealand, Tel: (04) 801 5799 62104; Fax: (04) 801 4994; E-mail: J.Faulkner@massey.ac.nz

Received December 12, 2013; **Accepted** January 22, 2014; **Published** January 24, 2014

Citation: Faulkner J, Lanford J, Lambrick D, Stoner L, Woolley B, et al. (2014) Effect of Early Exercise Engagement on Cardiovascular and Cerebrovascular Health in Stroke and TIA Patients: Clinical Trial Protocol. J Clin Trials 4: 154. doi:10.4172/2167-0870.1000154

Copyright: © 2014 Faulkner J, et al. This is an open-access article distributed under the terms of the Creative Commons Attribution License, which permits unrestricted use, distribution, and reproduction in any medium, provided the original author and source are credited.

cerebrovascular health within this population group (i.e., arterial stiffness, cerebral blood flow regulation). As a consequence of the limited number of investigations, particularly in the acute phase [5], no recommendations can be drawn with respect to guiding best practice for this population group [8].

Early mobilization and better blood pressure control have been suggested to be the greatest contributors to improved health outcomes with newly diagnosed stroke patients [10]. Early mobilization has been promoted within published stroke guidelines [10], although the practice remains controversial due to inconclusive evidence [11]. A recent meta-analysis of randomized and non-Randomized Controlled Trials (RCT) demonstrated that stroke survivors may benefit from cardiovascular exercise during the sub-acute stage as it may contribute to improvements in peak oxygen uptake and walking distance [12]. In theory, improvements in these measures of aerobic capacity may be aligned with an improved vascular profile, and reduced risk of recurrent cerebrovascular events. However, the authors defined the commencement of an exercise programme within 6 months of stroke diagnosis to be 'early' [12]. There is little clear consensus about what constitutes 'early' and thus what the optimal time to start a rehabilitation program is. In the acute and sub-acute phase of stroke care, getting the balance right between diagnosis, medical interventions and exercise rehabilitation can be challenging. Improving our understanding of the impact of the rehabilitation intervention on brain recovery, cardiovascular health and functional restoration should be a priority for stroke and TIA research, particularly as it has major implications for public health.

This study will investigate the efficacy of implementing either an early or delayed exercise intervention on cardiovascular and cerebrovascular health for newly diagnosed stroke or high-risk TIA patients. It is the intention that the present study will provide significant pilot data for a fully-funded randomized controlled trial, and may provide direction for future exercise prescription policy in this population cohort.

Methods

Research design

This is a dual-centre, randomized, parallel group clinical trial. This study is designed pragmatically to ensure that it reflects a potential real life application of an exercise intervention for stroke and high risk TIA patients.

Patient population

All stroke referrals are reviewed by specialist neurologists at a hospital and appropriate diagnostic tests are undertaken (stroke classification, side of body affected) including the National Institutes of Health Stroke Scale (NIHSS) and modified Barthel Index. The NIHSS is used to objectively quantify the impairment caused by stroke or TIA. It is composed of 11 items, each of which scores a specific ability (i.e., motor arm and motor leg function) between 0 (normal function) and 4 (significant impairment) [13]. The modified Barthel Index is used to establish the degree of independence during hospital admission [14]. The Neurology department uses scores of 13 out of 20 as an indicator that the patient may be suitable for discharge home [14], pending on the home situation, the available help, previous function and diagnostic criteria.

Inclusion criteria

- Those diagnosed with a stroke or high risk TIA (with ABCD²

score ≥ 4), after review by a specialist stroke physician.

- Those living within Wellington City and the Greater Wellington region.

Exclusion criteria

- Oxygen dependence, uncontrolled angina, unstable cardiac conditions (i.e., atrial fibrillation), uncontrolled diabetes mellitus, major medical conditions, claudication, febrile illness, significant cognitive impairment, immobile, age >85 years

Randomization

Participants will be randomized on completion of a baseline assessment (Figure 1). Participants will be assigned, using simple randomization, to either:

- i) a 12-week exercise programme which will commence within 7 days of stroke/TIA diagnosis ('early')
- ii) a 12-week exercise programme which will commence 28 days after stroke/TIA diagnosis ('delay')
- iii) Usual care control group (i.e. no additional supportive strategies will be implemented).

Details of the allocated group will be given on a piece of paper contained within sequentially numbered, opaque sealed envelopes. The randomization procedures will be prepared by an investigator with no clinical involvement in the trial. Although participants and the health and exercise practitioners will be aware of the allocated treatment condition, outcome assessors and data analysts will be blinded to the allocation.

For those participants randomized to the 'delay' exercise group, an additional assessment session will be conducted prior to the commencement of their exercise programme. This assessment will include all measures conducted in the initial baseline assessment. The purpose of this session is to identify any changes in cardiovascular and cerebrovascular health since the initial stroke/TIA diagnosis.

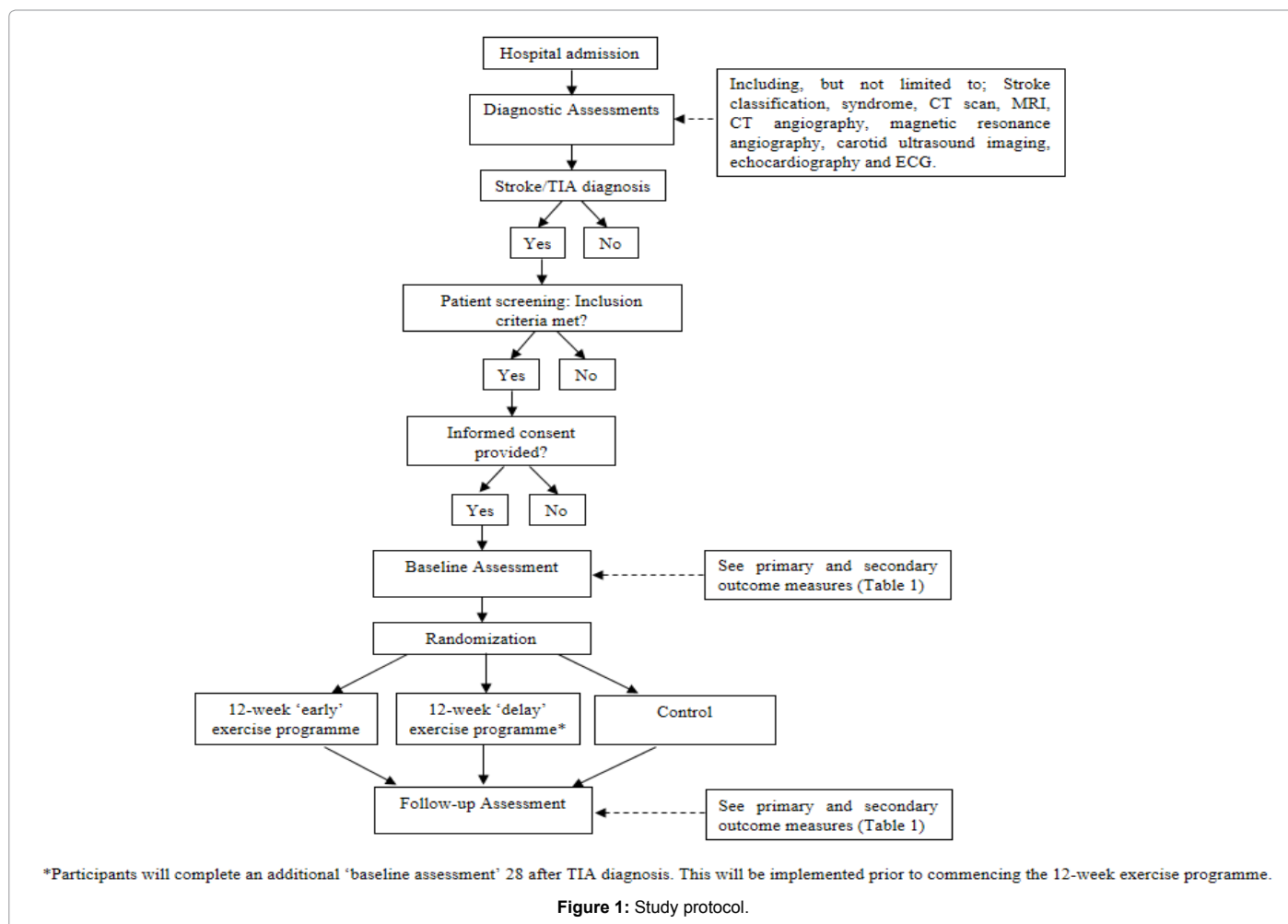
Baseline laboratory assessment and outcome measures

A baseline laboratory assessment will take place following hospital discharge and within 2 to 4 days of stroke/TIA diagnosis. Participants will be fasted (>10 hours) prior to the laboratory assessment. Primary and secondary outcome measures will be monitored during the assessment (Table 1). These measures include stiffness and blood velocity of the carotid artery, blood velocity of the middle cerebral artery, central and peripheral blood pressures and an Electrocardiogram (ECG). These cardiovascular and cerebrovascular outcome measures will be completed during all or some of the following; 20 minutes supine rest, during a postural challenge, a cerebral autoregulation and CO₂ reactivity test and/or an exercise test (Figure 2). The postural challenge will use a modified tilt table [15], in which the researchers will manually lift a hinged table 60° over 1.5s. The exercise test will be completed on a cycle ergometer. This test will be continuous and incremental, commencing at a low-intensity (30 W) and getting progressively harder (30 W every 2 minutes). The exercise test will be terminated when the subject reports volitional exhaustion physiological responses are observed from the ECG (e.g. 2 mm ST depression).

Identical assessments will occur at the follow-up assessment (post-intervention).

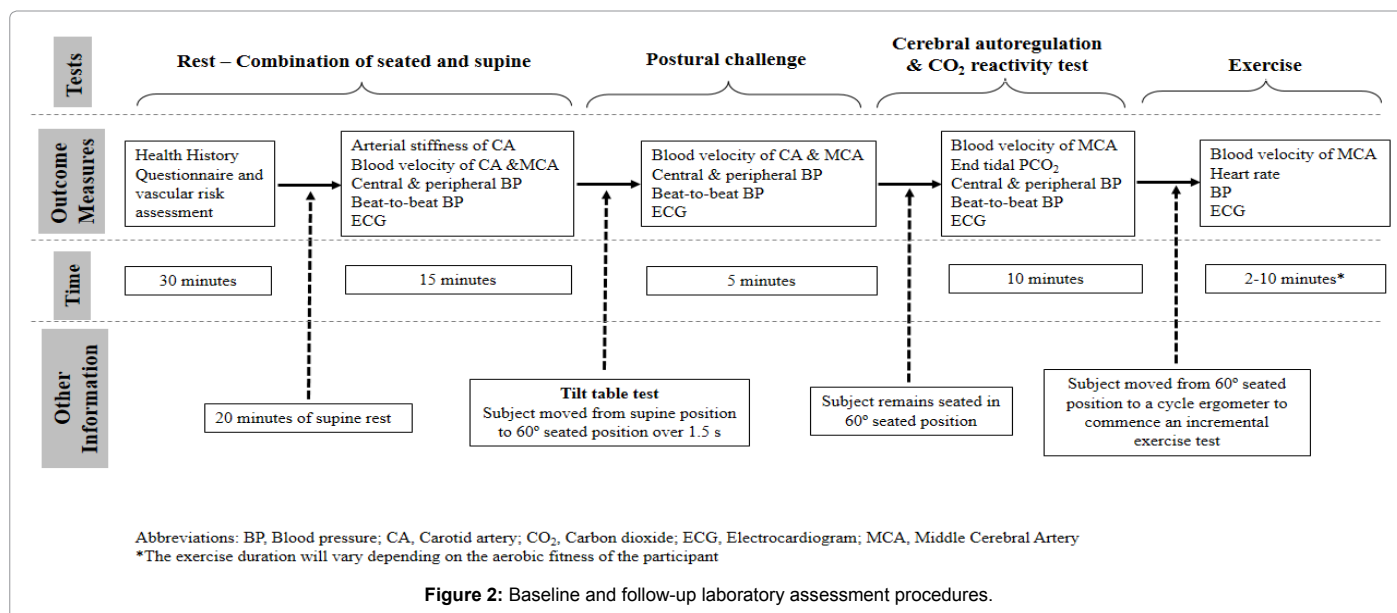
12 week exercise programme

Participants randomized to the exercise programme ('early' and



Dependent variable	Procedure / measures	Study outcome	Type of measurement
Health History Questionnaire [18]	• Questionnaire to identify family history, personal history and signs and symptoms of cardiovascular disease, and to provide a lifestyle evaluation	Secondary	Rest
Vascular risk factors [18]	• Fasted blood lipid profile (total cholesterol, high-intensity lipoproteins etc.) and blood glucose (capillary sample). • Resting supine systolic and diastolic blood pressure. • Body weight, body mass index, waist and hip circumference.	Primary	Rest
Arterial stiffness of carotid artery	• Following 20 minutes post-supine rest, local arterial stiffness of the carotid arteries will be imaged 1-2 cm proximal to the bifurcation using B-mode ultrasound.	Primary	Rest
Blood velocity of carotid artery	• Doppler ultrasonography will be used to calculate bilaterally volumetric blood flow in the carotid artery. Blood flow will be recorded using a Doppler spectral trace for 3 minutes during supine rest, during the postural challenge, and for 5-minutes post-modified tilt test.	Primary	Rest, postural tilt
Blood velocity of Middle Cerebral Artery (MCA)	• Transcranial Doppler (TCD) ultrasonography will continuously measure cerebral blood flow.	Primary	Rest, postural tilt, exercise
Central & peripheral blood pressures	• Pulse wave analysis will investigate central blood pressures, augmentation index and arterial stiffness.	Secondary	Rest
Beat-to-beat blood pressure	• Finger photoplethysmography	Secondary	Rest, postural tilt
Cerebral autoregulation and CO ₂ reactivity test	• Cerebrovascular reactivity to changes in the partial pressure of arterial CO ₂ is a recognised indicator of brain vascular reserve [19]. Sitting in a recumbent (60°) position, participants will breathe a CO ₂ gas mixture (5% CO ₂ , 21% O ₂ , balanced N ₂) for 100 s followed by 100 s of voluntary hyperventilation until the partial pressure of end tidal CO ₂ decreases by 4mmHg or more relative to baseline. Changes in the MCA blood velocity relative to changes in end tidal PCO ₂ and blood pressure will be assessed.	Secondary	Rest
Physical fitness	• A peak and/or symptom limited exercise ECG on a cycle ergometer will be undertaken to determine whether it is clinically safe for participants to engage in the exercise programme. This test will be continuous and incremental. Participants' ECG, heart rate, blood pressure and blood velocity of the MCA will be continuously recorded.	Secondary	Exercise

Table 1: Study outcomes which will be measured at the baseline and follow-up assessments.



'delay' group) will take part in a twice weekly, group focused (3 to 5 patients) aerobic exercise session, for a period of 12 weeks. Exercise will be prescribed on a one-to-one basis by a health and exercise practitioner. Each session will be for 60 minutes, incorporating 30 to 45 minutes of aerobic exercise (walking, cycling etc). The remaining exercise session will consist of flexibility and balance exercises. Blood pressure, heart rate and RPE will be measured prior to, during and following each bout of aerobic exercise. Participants will exercise between 60 and 95% of age-predicted maximal heart rate during each aerobic exercise tasks. The exercise intensity will increase by ~5% each week, although the rate of progression will be dependent upon how the subject feels during each session. Exercise practitioners will ensure that participants do not exercise above 95% of their age-predicted maximal heart rate, or beyond intensities defined by their cardiac risk as identified from the baseline ECG assessment.

Participants will also be asked to complete an additional home-based exercise session, consisting of 30 minutes walking.

Ethical approval and informed consent

The study protocol has received ethical approval from the New Zealand Health and Disability Ethics Committee. The study has also been registered with the Australian and New Zealand Clinical Trials Registry: ACTRN12613000869774. Written informed consent will be obtained from all study participants.

Data monitoring body

A Research Steering Committee will meet once every 3 months to discuss data and safety monitoring (i.e., adverse events) and to provide advice on implementation of the research outcomes and outputs. The steering committee will include members of the research team and external stakeholders from the University sector, Hospital and community.

Sample size

Sixty participants will be recruited and evenly allocated to each of the three groups to enable an appropriate sample size to be calculated for a larger trial.

Data analysis

The number of subjects which will be screened for inclusion, and the number of individuals who decide not to participate in the study will be tracked. Participant compliance and adherence to the assessment and exercise sessions will be monitored.

Baseline characteristics of the three study groups will be described by means and standard deviations, and percentages as appropriate for the level of measurement and distributions of the data. Baseline characteristics will be compared between groups using a series of one-way analysis of variance (ANOVA). Two-way repeated measures ANOVAs: Condition (early, delay, control) by Time (baseline, post-intervention), will be used to compare all primary and secondary outcome measures. Where statistical differences are observed from the preceding analyses, post-hoc analyses for multiple comparisons will be conducted (Bonferroni adjusted t-tests; Tukeys HSD). An intention-to-treat analysis will be used on all consented subjects who are unable to attend the follow-up assessment. Effect sizes will be reported to describe the importance of the relevant findings in practical terms.

Discussion

The high prevalence of a recurrent TIA or stroke underscores the need for appropriate secondary prevention strategies. Regular physical activity participation may be an important strategy which may yield favourable improvements in physiological outcome measures for these population groups. A recent meta epidemiological study has demonstrated that exercise should be more widely used in the secondary prevention of cardiovascular and cerebrovascular events, and rehabilitation after stroke [16]. In fact, the findings of this review suggest that exercise and many drug interventions are similar in terms of their mortality benefits, and as such, exercise should be considered a viable alternative to, or alongside, drug therapy [16]. However, the scientific rigor behind implementing exercise programmes soon after diagnosis remains controversial [17] due to inconclusive evidence [11]. Although recent research has shown the aerobic and vascular benefit of exercise for ischaemic stroke and TIA patients [7,9], a more comprehensive understanding of the physiological effect of exercise on cardio- and cerebrovascular health outcomes is needed, along with the

time domain (early, delayed) for when it should be implemented. An improved understanding of when rehabilitation programmes should be implemented is required to ensure an optimal environment for brain recovery, cardiovascular health and functional restoration. With so few exercise based RCTs being implemented worldwide [16], this is a novel and highly important area of research which requires significant consideration [18,19].

This study may significantly contribute to our knowledge in stroke and TIA rehabilitation, prevent recurrent vascular events and may be a viable secondary prevention strategy which could reduce the mounting health care costs associated with stroke and TIA. The study will provide much needed objective data for stroke and high-risk TIA patients concerning the physiological effect of regular exercise participation. Importantly, this study will identify the effect of patients engaging in exercise immediately following stroke/TIA diagnosis (early) or following a delay. Given the practical implications of the present study, we will examine the clinical significance of early or delayed exercise engagement for each outcome variable.

Acknowledgement of Support

The study team would like to thank the Massey University Research Fund and University of Otago for their financial support.

References

1. Go AS, Mozaffarian D, Roger VL, Benjamin EJ, Berry JD, et al. (2013) Heart disease and stroke statistics--2013 update: a report from the American Heart Association. *Circulation* 127: e6-6e245.
2. Hankey G (1996) Impact of treatment of people with transient ischaemic attack on stroke incidence and public health. *Cerebrovasc Dis* 6: 26-33.
3. Hörer S, Schulte-Altedorneburg G, Haberl RL (2011) Management of patients with transient ischemic attack is safe in an outpatient clinic based on rapid diagnosis and risk stratification. *Cerebrovasc Dis* 32: 504-510.
4. Wolf PA, Clagett GP, Easton JD, Goldstein LB, Gorelick PB, et al. (1999) Preventing ischemic stroke in patients with prior stroke and transient ischemic attack : a statement for healthcare professionals from the Stroke Council of the American Heart Association. *Stroke* 30: 1991-1994.
5. Lennon O, Galvin R, Smith K, Doody C, Blake C (2013) Lifestyle interventions for secondary disease prevention in stroke and transient ischaemic attack: a systematic review. *Eur J Prev Cardiol* 2013 Mar 11. [Epub ahead of print].
6. Prior PL, Hachinski V, Unsworth K, Chan R, Mytka S, et al. (2011) Comprehensive cardiac rehabilitation for secondary prevention after transient ischemic attack or mild stroke: I: feasibility and risk factors. *Stroke* 42: 3207-3213.
7. Lennon O, Carey A, Gaffney N, Stephenson J, Blake C (2008) A pilot randomized controlled trial to evaluate the benefit of the cardiac rehabilitation paradigm for the non-acute ischaemic stroke population. *Clin Rehabil* 22: 125-133.
8. MacKay-Lyons M, Thornton M, Ruggles T, Che M (2013) Non-pharmacological interventions for preventing secondary vascular events after stroke or transient ischemic attack. *Cochrane Database Syst Rev* 3:CD008656.
9. Faulkner J, Lambrick D, Woolley B, Stoner L, Wong LK, et al. (2013) Effects of early exercise engagement on vascular risk in patients with transient ischemic attack and nondisabling stroke. *J Stroke Cerebrovasc Dis* 22: e388-396.
10. Adams HP Jr, Adams RJ, Brott T, del Zoppo GJ, Furlan A, et al. (2003) Guidelines for the early management of patients with ischemic stroke: A scientific statement from the Stroke Council of the American Stroke Association. *Stroke* 34: 1056-1083.
11. Bernhardt J, Dewey H, Thrift A, Collier J, Donnan G (2008) A very early rehabilitation trial for stroke (AVERT): phase II safety and feasibility. *Stroke* 39: 390-396.
12. Stoller O, de Bruin ED, Knols RH, Hunt KJ (2012) Effects of cardiovascular exercise early after stroke: systematic review and meta-analysis. *BMC Neurol* 12: 45.
13. Adams HP Jr, Davis PH, Leira EC, Chang KC, Bendixen BH, et al. (1999) Baseline NIH Stroke Scale score strongly predicts outcome after stroke: A report of the Trial of Org 10172 in Acute Stroke Treatment (TOAST). *Neurology* 53: 126-131.
14. McDowell I (1996) Measuring health: A guide to rating scales and questionnaires. Oxford University Press, Oxford.
15. Murrell CJ, Cotter JD, George K, Shave R, Wilson L, et al. (2011) Cardiorespiratory and cerebrovascular responses to head-up tilt II: influence of age, training status and acute exercise. *Exp Gerontol* 46: 1-8.
16. Naci H, Ioannidis JPA (2013) Comparative effectiveness of exercise and drug interventions on mortality outcomes: metaepidemiological study. *BMJ* 347: f5577.
17. Diserens K, Michel P, Bogouslavsky J (2006) Early mobilisation after stroke: Review of the literature. *Cerebrovasc Dis* 22: 183-190.
18. ACSM's guidelines for exercise testing and prescription (2013). Lippincott, Williams and Wilkins, Philadelphia.
19. Markus H, Cullinane M (2001) Severely impaired cerebrovascular reactivity predicts stroke and TIA risk in patients with carotid artery stenosis and occlusion. *Brain* 124: 457-467.

Citation: Faulkner J, Lanford J, Lambrick D, Stoner L, Woolley B, et al. (2014) Effect of Early Exercise Engagement on Cardiovascular and Cerebrovascular Health in Stroke and TIA Patients: Clinical Trial Protocol. *J Clin Trials* 4: 154. doi:[10.4172/2167-0870.1000154](https://doi.org/10.4172/2167-0870.1000154)

Submit your next manuscript and get advantages of OMICS Group submissions

Unique features:

- User friendly/feasible website-translation of your paper to 50 world's leading languages
- Audio Version of published paper
- Digital articles to share and explore

Special features:

- 300 Open Access Journals
- 25,000 editorial team
- 21 days rapid review process
- Quality and quick editorial, review and publication processing
- Indexing at PubMed (partial), Scopus, EBSCO, Index Copernicus and Google Scholar etc
- Sharing Option: Social Networking Enabled
- Authors, Reviewers and Editors rewarded with online Scientific Credits
- Better discount for your subsequent articles

Submit your manuscript at: www.omicsonline.org/submission/