



# Long-term perspectives on terrestrial and aquatic carbon cycling from palaeolimnology

Suzanne McGowan,<sup>1,2\*</sup> N. John Anderson,<sup>3</sup> Mary E. Edwards,<sup>4</sup> Peter G. Langdon,<sup>4</sup> Vivienne J. Jones,<sup>5</sup> Simon Turner,<sup>5</sup> Maarten van Hardenbroek,<sup>4</sup> Erika Whiteford<sup>3</sup> and Emma Wiik<sup>3,6</sup>

Lakes are active processors and collectors of carbon (C) and thus recognized as quantitatively important within the terrestrial C cycle. Better integration of palaeolimnology (lake sediment core analyses) with limnological C budgeting approaches has the potential to enhance understanding of lacustrine C processing and sequestration. Palaeolimnology simultaneously assimilates materials from across lake habitats, terrestrial watersheds, and airsheds to provide a uniquely broad overview of the terrestrial-atmospheric-aquatic linkages across different spatial scales. The examination of past changes over decadal–millennial timescales via palaeolimnology can inform understanding and prediction of future changes in C cycling. With a particular, but not exclusive, focus on northern latitudes we examine the methodological approaches of palaeolimnology, focusing on how relatively standard and well-tested techniques might be applied to address questions of relevance to the C cycle. We consider how palaeolimnology, limnology, and sedimentation studies might be linked to provide more quantitative and holistic estimates of lake C cycling and budgets. Finally, we use palaeolimnological examples to consider how changes such as terrestrial vegetation shifts, permafrost thaw, the formation of new lakes and reservoirs, hydrological modification of inorganic C processing, land use change, soil erosion and disruption to global nitrogen and phosphorus cycles might influence lake C cycling. © 2015 The Authors. *WIREs Water* published by Wiley Periodicals, Inc.

How to cite this article:

*WIREs Water* 2016, 3:211–234. doi: 10.1002/wat2.1130

\*Correspondence to: [suzanne.mcgowan@nottingham.ac.uk](mailto:suzanne.mcgowan@nottingham.ac.uk)

<sup>1</sup>School of Geography, University of Nottingham, Nottingham, UK

<sup>2</sup>School of Geography, University of Nottingham Malaysia Campus, Semenyih, Malaysia

<sup>3</sup>Department of Geography, Loughborough University, Loughborough, UK

<sup>4</sup>Geography and Environment, University of Southampton, Southampton, UK

<sup>5</sup>Environmental Change Research Centre, Department of Geography, University College London, London, UK

<sup>6</sup>Limnology Laboratory, Department of Biology, University of Regina, Regina, Canada

Conflict of interest: The authors have declared no conflicts of interest for this article.

## INTRODUCTION

Quantification of the terrestrial carbon (C) cycle is paramount to understanding global climate change, and lakes, as ‘landscape chimneys,’ play a key role in terrestrial C processing.<sup>1</sup> Most lakes are considered to be net C sources to the atmosphere, emitting carbon dioxide (CO<sub>2</sub>) and methane (CH<sub>4</sub>), and are highly active C processing hotspots.<sup>1–4</sup> Yet lakes also simultaneously sequester C in their sediments, comprising one of the largest stores of organic C (OC) on the continents.<sup>5–8</sup> A major challenge therefore exists in trying to quantify relative rates of C evasion versus sequestration in lakes and the

influence this has on C fluxes from land, through river basins and to the ocean. Global estimates suggest that annual net lake C evasion exceeds sequestration and inland waters receive 1.9 PgC year<sup>-1</sup> from streams and rivers of which 0.2 PgC year<sup>-1</sup> accumulates as sediment, 0.8 PgC year<sup>-1</sup> is evaded to the atmosphere and 0.9 PgC year<sup>-1</sup> is delivered to the oceans,<sup>9</sup> although the rates of C evasion in lakes<sup>4</sup> and rivers<sup>10</sup> might be higher. Therefore, the 'active pipe model' highlights that lakes are not simply passive vessels for C transport, but play a critical role in C processing of sufficient magnitude to alter regional C budgets.<sup>9</sup> In this review, we outline the contribution that the long-term and integrative perspective offered by palaeolimnology can make in understanding the complex interplay of physical, chemical, and biological processes, which influence these C pathways in lakes.

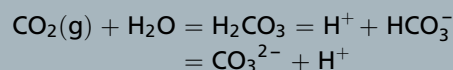
C within lake ecosystems can be separated into four major pools (Box 1). Dissolved inorganic C (DIC; as CO<sub>2</sub>) may be fixed into organic form by autotrophs (through photosynthesis or chemosynthesis; autotrophy), and reciprocally organic C can be oxidized/mineralized through physical, chemical, and biological (e.g., respiration/heterotrophy) processes to CO<sub>2</sub> (aerobic conditions) or CH<sub>4</sub> (anaerobic conditions). The balance of these processes determines whether organic and inorganic C entering a lake is emitted to the atmosphere as a gas, incorporated into the particulate C pool to be collected in sedimentary deposits or exported downstream. Understanding how these processes will change in the future is key to calibrating the terrestrial C cycle.<sup>1</sup> One way to address this issue is to use the past as an analogue for future scenarios. Palaeolimnology, the investigation of lake sediments, provides a direct methodology for documenting C inventories in water bodies. Furthermore, through sediment proxies (Figure 1) it is possible to identify past changes in C flux from land to lake as well as gaining qualitative insights into the ways in which it is processed. Distinctive from most limnological approaches, which often focus solely on pelagic measurements (in the water column), palaeolimnology integrates C from all components of the catchment and lake ecosystem, including the benthos. Because benthic production accounts for a large proportion of primary productivity in many lakes,<sup>11,12</sup> this integration has the potential to provide a more holistic overview of changes in whole-ecosystem C processing, which can be used to refine regional C budgets.<sup>13</sup>

One major unresolved question is how processing of terrestrial C within lakes and wetlands will alter with future global environmental change (GEC),

## BOX 1

### FORMS OF CARBON IN LAKE ECOSYSTEMS

Dissolved inorganic carbon (DIC): Carbon dioxide (CO<sub>2</sub>) is the major DIC pool and either passes into lakes from the atmosphere, or is produced *in situ* by respiration and oxidation of organic material. When dissolved in water to form carbonic acid, it can dissociate as follows dependent on pH:



DIC links atmospheric and aquatic C pools.

Particulate inorganic carbon (PIC): PIC includes solid inorganic carbonate material, usually calcium carbonate (as aragonite or calcite). In lakes, PIC accumulates in sediments, but is sometimes found suspended in the water when mass production by phytoplankton causes 'whiting events.' PIC precipitation is common in lakes within carbonate-rich catchments and closed-basin lakes where salts accumulate. Charophytes may become encrusted in calcium carbonate deposits, or 'marl,' which can be a significant component of the lake sedimentary C pool.

Dissolved organic carbon (DOC): DOC includes molecules in water usually classified as <0.45 μm in size. Dissolved organic matter (DOM) is also used to describe organic material. Allochthonous DOM delivered to lakes is often brown-coloured (CDOM) deriving from partly decomposed terrestrial vegetation and soils including humic and fulvic acids, as well as lower molecular weight (Mr) compounds. Autochthonous DOC/DOM sources are usually lower Mr and colourless C compounds, released as metabolic byproducts by lake microbes and organisms. DOM is important in the terrestrial C cycle because it is highly mobile and can be utilized by heterotrophic bacteria as an energy source.

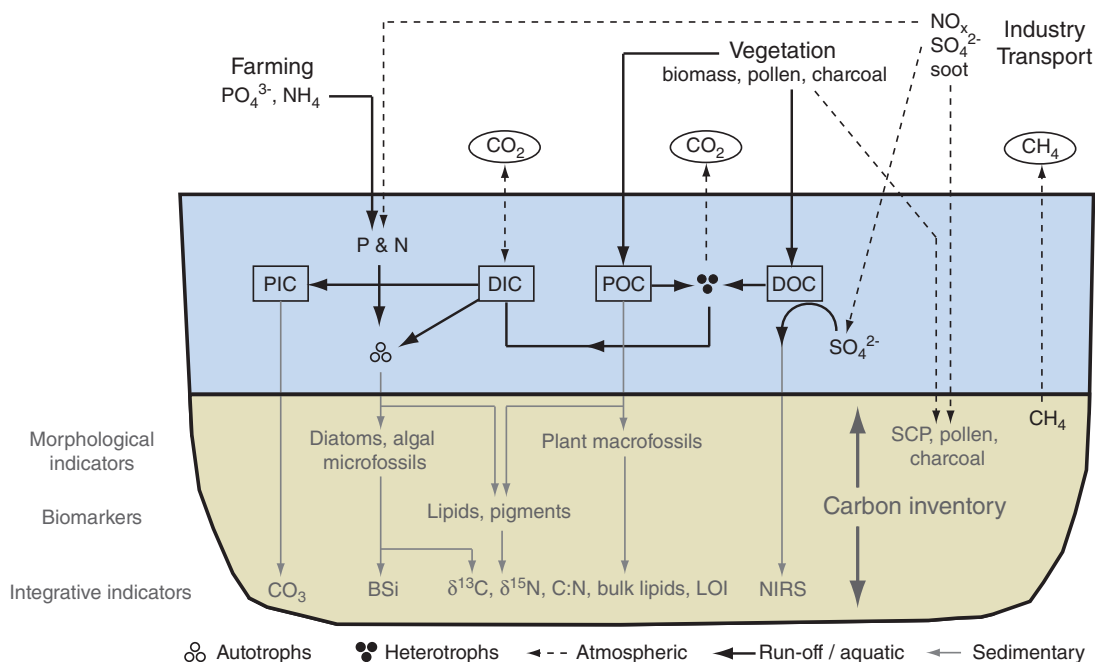
Particulate organic carbon (POC) (and particulate organic matter, POM) includes particles >45 μm, which exist in lakes either suspended in the water or collected in the lake bottom as sediments. Autochthonous POM may include living organisms such as bacteria, phytoplankton, zooplankton, and plants or detrital remains of decaying organisms. Allochthonous POM includes particulate matter such as vegetation remains and soil erosion washed into lakes and air-transported materials such as dust, pollen, and particulate contaminants.

because this may be an important feedback for greenhouse gas production or sequestration. Common approaches to this question use surveys across latitudinal gradients to understand how lakes process C within different biomes.<sup>14,15</sup> This ‘space for time substitution’ approach can provide analogues for how lakes function within different climatic, edaphic, and biogeochemical circumstances, and thus guide likely trajectories of future change. Such approaches are, however, only achievable in areas with high lake density and so have been focused on northern latitudes, where the majority of lakes occur.<sup>16</sup> Spatial surveys are only partially satisfactory for investigating C cycling because many other factors co-vary spatially, particularly between mid-high latitudes where the major climatic and vegetation transitions occur.<sup>4,17</sup> For example, seasonal change in day length differs substantially between temperate-Arctic areas but most measurements of lake C processing have been conducted in boreal and temperate regions, which retain daylight during the winter and have greater anthropogenically derived nutrient burdens.<sup>18</sup> The under ice period is important because heterotrophy dominates leading to major CH<sub>4</sub> degassing during the ice melt period,<sup>19–21</sup> but little is known of under ice processes, particularly in Arctic lakes.<sup>22</sup> Therefore, half or more of the annual lake C cycle within

the Earth’s most lake-rich regions is probably inadequately quantified.<sup>16</sup> Where spatial comparisons have limitations for projecting future change in individual regions, the temporal approach of palaeolimnology has the potential to address some of these issues, especially when combined with comparisons across landscapes.<sup>23,24</sup>

### HOW CAN WE MEASURE ‘C CYCLING’ USING PALAEO LIMNOLOGY?

C cycling is a rather general term, but understanding the role of lakes within the terrestrial C cycle requires knowledge of lake C pools and the processes that alter relative shifts between them. Lake sediments sequentially archive material from the watershed, airshed (allochthonous), and lake environment (autochthonous) allowing direct comparison of how terrestrial, atmospheric, and aquatic processes are coupled through time (Figure 1). Although not implicitly process-based, well-designed palaeolimnological studies, which use a selection of well-chosen proxies are able to address many questions of relevance to C cycling. The section below focuses on routinely applied standard palaeolimnological techniques.



**FIGURE 1** | Schematic showing the origin and processing pathways of commonly used palaeolimnological proxies in lake sediments (grey), including the influence of modifications by anthropogenic and natural processes (agriculture, fossil fuel combustion, and changes in terrestrial vegetation cover). Carbon (C) pools in lake waters (blue) include particulate inorganic C (PIC), dissolved inorganic C (DIC), particulate organic C (POC), and dissolved organic C (DOC).

## C Inventories

Palaeolimnology can directly measure the amount of C sequestered within lacustrine basins (the C standing stock) and variability in past rates of C accumulation. Sedimentary C content can be estimated through by loss-on-ignition (LOI) after burning at 550°C (organic) and 925°C (carbonate) and correcting for C content,<sup>25,26</sup> or via an elemental analyzer on acidified (to remove inorganic carbonates) or non-acidified sediments.<sup>27</sup> These straightforward methods estimate the relative C in organic and inorganic (usually carbonate) forms versus minerogenic material (including biogenic silica, BSi).<sup>28</sup> In areas where lake formation dates are known, regional estimates of lake C stocks are possible using lake morphometry and volumetric density-corrected calculations of sediment.<sup>5,29,30</sup> Sediment cores dated using a combination of <sup>210</sup>Pb, <sup>137</sup>Cs, radiocarbon (<sup>14</sup>C) and other techniques can be used to quantify changes in the C accumulation rate (CAR), for an overview of changes in C processing over longer timescales.<sup>31</sup> Most palaeolimnological studies are based on a single sediment core taken from the deepest central part of the basin where sediment focusing occurs (fine particles are preferentially deposited in deeper parts of the lake basin).<sup>32</sup> Estimates of whole-basin CARs require correction for sediment focusing, which can be achieved in recent sediments using the ratio of sediment <sup>210</sup>Pb flux: regional atmospheric <sup>210</sup>Pb flux<sup>33,34</sup> or through multiple coring.<sup>35</sup> Seismic surveys are informative in larger or deeper lake basins with heterogeneous sediment coverage,<sup>35–37</sup> or where gas hydrates might be important for C budgets.<sup>38</sup>

## Morphological 'Fossil' Macro- And Microscopic Remains

Terrestrial pollen, spores, and plant macrofossils provide a relatively direct assessment of land vegetation cover<sup>39</sup> and, by inference, the presence of allochthonous C pools, soil development, and precipitation (Figure 1). Therefore, these proxies may be used to estimate the potential for changes in DOC runoff or soil erosion into lakes.<sup>40,41</sup> Other allochthonous and wind-borne morphological remains indicative of processes relevant to C-cycling may derive from coal-fired power stations, which emit soot particles and pollutants,<sup>42</sup> or from fires on land, which release charcoal into lake air- and watersheds.<sup>43</sup> Many autochthonous primary producers in lakes leave identifiable remains in sediments, especially diatoms (frustules), chrysophytes (cysts and scales), cyanobacteria (akinetes), dinoflagellates (cysts), and the chlorophyte alga *Pediastrum* (cell walls).<sup>44</sup> If fluxes are

quantified from dated cores a provisional estimate of changes in primary productivity of the source organism is possible.<sup>45</sup> However, sedimentary remains are only a remnant of the original community because of decomposition and differential preservation, and some remains such as cysts are formed during particular life stages.<sup>46</sup> Therefore, most estimates of past microfossil flux are used to infer relative measures of productivity changes through time rather than whole-basin estimates (c.f. Ref 32). Nevertheless, estimation of microfossil flux is a relatively straightforward but under-utilized technique to quantify variability in autochthonous C sequestration rates by individual groups of biota. Numerous primary and secondary consumers also leave sedimentary remains (e.g., chironomids, cladocera, oribatid mites, and sponge spicules<sup>47</sup>). Indicator taxa tolerant to oxygen stress (e.g., *Chironomus*) can be used to infer hypolimnetic anoxia, which has implications for sediment C preservation and methanogenesis.<sup>48</sup> Using a combination of proxies it is possible to reconstruct paleo-food webs<sup>49</sup> to infer past changes in lake functioning. For example, major shifts between benthic and pelagic primary and secondary production in shallow lakes can infer changes in major habitats for autotrophic C production, processing and energy flows.<sup>50,51</sup>

## Biochemical Indicators of C Processing

Many morphological remains decompose before deposition in sediments and in these cases biochemical markers (biomarkers) may be used as sedimentary proxies.<sup>52</sup> These may include chlorophyll and carotenoid pigments, indicative of certain algal and bacterial groups (e.g., cryptophytes and cyanobacteria) and used to estimate autochthonous primary production.<sup>53</sup> Some bacteriochlorophylls and carotenoids from obligate anaerobic photosynthetic bacteria (e.g., Chlorobiaceae and Chromatiaceae) can be used to infer anoxia, with associated implications for the preservation of sedimentary C. Other ultraviolet radiation (UVR)-screening pigments such as scytonemin and derivatives are produced by some microbes on exposure to UVR and so their production relative to other pigments can quantify water staining by CDOM.<sup>54</sup> Other lipid biomarkers include a range of hydrocarbons and carboxylic acids, alcohols, and ketones, which can be used as individual biomarkers, e.g., dinostanol (a sterol chlorin ester biomarker for dinoflagellates),<sup>55</sup> phenolic compounds from coniferous trees,<sup>52</sup> hopanoid biomarkers from heterotrophic bacteria,<sup>56,57</sup> archaeols from methanogenic archaea,<sup>58,59</sup> and specific fatty acids and hopanoids



from CH<sub>4</sub>-oxidizing bacteria.<sup>60,61</sup> With the exception of chlorophyll and carotenoid pigments, many individual lipid biomarkers are present in low sedimentary concentrations however, which restricts their routine and high-resolution application in sediment analyses. As analytical techniques evolve and knowledge of affinities develops it is clear that organic geochemistry and emerging techniques such as ancient DNA will provide further insights into lake C processing.<sup>62</sup>

### Integrative Sedimentary Geochemistry

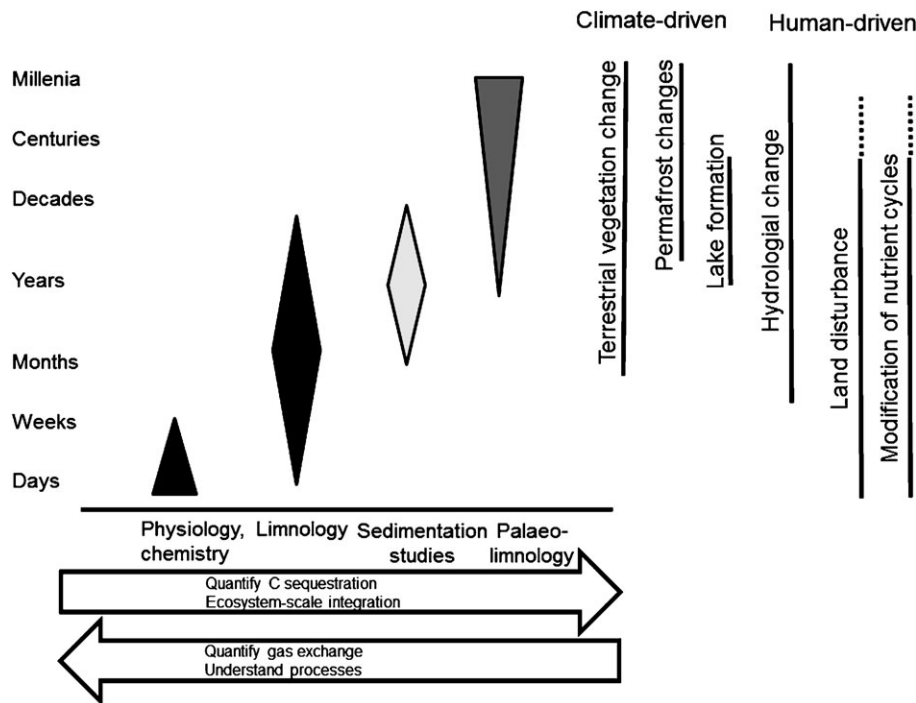
An alternative or complementary approach to specific biomarker methods is to use integrative measures on the OM fraction in sediments to evaluate broad shifts in source and process. The atomic ratio of carbon:nitrogen (C:N) is commonly used to infer the source of sediment OM because terrestrial material usually contains more C-rich cellulose and lignin than autochthonous algal material, which has a lower C:N ratio. Ratios of long (more common in terrestrial vegetation) and short chain (more common in aquatic organisms) alcohols and *n*-alkanes can be similarly compared to infer relative terrestrial fluxes.<sup>52,63</sup> Near infra-red spectrometry (NIRS) is a nondestructive spectral measure of sediment properties, which correlates with water column DOC concentrations at the time of sediment deposition, although the basis of this correlation remains unclear.<sup>64,65</sup> C stable isotopes are widely used in palaeolimnology and whilst the principles underlying isotopic fractionation are theoretically well understood, interpreting bulk (c.f. organism-specific) lake  $\delta^{13}\text{C}$  ratios in sediment profiles requires thorough understanding of the lake-catchment system. Sedimentary  $\delta^{13}\text{C}$  can be measured within the organic ( $\delta^{13}\text{C}_{\text{org}}$ ) and inorganic ( $\delta^{13}\text{C}_{\text{inorg}}$ ) sediment fractions and may record shifts in terrestrial/aquatic contributions to the lake basin and changes in process (including diagenesis).<sup>63,66</sup> For example,  $\delta^{13}\text{C}$  values in DIC fixed during photosynthesis may depend on lake-atmosphere CO<sub>2</sub> exchange, algal productivity rates, and decomposition of terrestrial OM into DIC, which is then incorporated into algal material.<sup>67</sup> DIC derived from CH<sub>4</sub>-depleted  $\delta^{13}\text{C}$  ratios may be effectively incorporated and preserved in the head capsules of chironomids<sup>68,69</sup> and the  $\delta^{13}\text{C}$  values of aquatic macrophyte remains have been used to reconstruct HCO<sub>3</sub><sup>-</sup> concentrations.<sup>70</sup> Changes in catchment vegetation (e.g., C3 versus C4 plants) are also important drivers of sedimentary  $\delta^{13}\text{C}_{\text{org}}$ ,<sup>71</sup> but extraction of isotopes from isolated organic fractions such as leaf waxes can refine terrestrial vegetation

reconstructions.<sup>72</sup> BSi analysis is a rapid alternative to microfossil analysis for quantifying sedimentary contributions from siliceous biota<sup>73</sup> and the fractionation of stable silicon isotopes  $\delta^{30}\text{Si}$  can indicate palaeoproductivity.<sup>74</sup> Radiocarbon dating of terrestrial plant macrofossil and contemporary sediments frequently shows offset ages.<sup>75</sup> Whilst these discrepancies are regarded as troublesome for deriving accurate chronologies, they are informative of past lake water equilibration with atmospheric CO<sub>2</sub> and incorporation of 'old' C from the catchment (e.g., through permafrost melt), which can become incorporated into sedimentary OM.<sup>76</sup>

### QUANTITATIVE INTEGRATION OF PALAEO-LIMNOLOGY AND LIMNOLOGY

The previous examples describe how palaeolimnology can be used to directly quantify lake C inventories, CARs and changes in source materials accumulated in lake basins, and thus fill gaps in understanding of C sequestration and associated processes that are impossible to measure using limnological techniques<sup>8</sup> (Figure 2). Improvements in the application of palaeolimnology might be achieved by a more critical consideration of sediment redistribution and focusing processes, which need to be accounted for when comparing sediment accumulation rates among different lakes.<sup>33,77</sup> However, quantitative interpretation of palaeolimnology also requires stronger integration with limnology and sedimentation studies. Commonly, linkages between the sediment record and limnological conditions are established by correlating limnological conditions with sediments through space or time. Hence, in general, more C is sequestered in productive than unproductive lakes (c.f. 11 m of sediment in Denmark with 2 m Greenland over the Holocene<sup>31,78</sup>). However, direct correlations between lake productivity and C sequestration are far too simplistic because they ignore the roles of allochthonous C delivery, the processes which cause decomposition and preservation of C in the water column and sediment focusing. Measurements in the water column and sediments can complement palaeolimnological observations to facilitate improved interpretations. Next, we explore how lake sediments are formed and the processes which change them during and after deposition to consider how this influences the interpretation of C cycling using palaeolimnology.

Sedimentation of C first requires production of particulate C that is composed of sources from inside



**FIGURE 2** | Conceptual model illustrating how palaeolimnology integrates with other methodologies in quantification of terrestrial-aquatic carbon (C) cycling, and the elements that can be best quantified by each method (arrows). The breadth of the shapes indicates how widely the methodology has been applied at each timescale and the intensity of shading indicates the relative frequency that each type of technique has generally been applied. The majority of C cycling studies in lakes thus far have focused on physiological/chemical and limnological processes, although there are a growing number of palaeolimnological studies dedicated to this topic. In comparison there are fewer quantitative studies of C sedimentation using techniques such as sediment traps to understand whole lake C budgets; such studies are vital to bridge the gap between palaeo/limnological methods. Timescales of operation for a range of global environmental change processes discussed in the latter half of the review are presented for comparison.

and outside of the lake. Allochthonous POC can be a significant component in lake sediments from erodible catchments with organic soils,<sup>35,79</sup> whereas in-lake production of POC depends strongly on the autotrophic–heterotrophic balance and food web processes. Up to 95% of DOC may be removed from lake pools by photochemical mineralization to CO<sub>2</sub>, which in turn is influenced by physical processes such as lake mixing.<sup>80,81</sup> It is not possible to directly measure the resulting gaseous emissions from lakes using palaeolimnology, but sediments provide a means of validating and guiding such limnological gas measurements. For example, sedimentary  $\delta^{13}\text{C}$  analyses might identify whether methanogenesis is important to the overall lake C budget to determine whether gas measurements, which may be temporally discontinuous, have effectively captured all relevant processes.<sup>68,82</sup> Microbial processing of DOM also provides a pathway for POC (sediment) production because heterotrophic organisms utilize DOM as an energy source and are an important component of the POC pool, detectable by sedimentary C isotope

and other organic biomarker analyses.<sup>83</sup> Heterotrophic consumption of DOM releases nutrients (‘the microbial loop’), which can fertilize growth of autotrophic algal POC, but phototrophic productivity rates are moderated by light absorption by CDOM.<sup>4</sup> Each of these POC sources is available for consumption and incorporation into higher parts of the lake food web.<sup>84</sup> These factors interact to determine the overall composition, abundance, and fate of the POC pool, and hence the sediment record that is ultimately preserved and detected by palaeolimnology.<sup>85,86</sup>

Sedimentation studies demonstrate that only a small fraction of the C fixed or processed in lakes ends up in sediments.<sup>87,88</sup> For example, approximately 90% of algal pigments and 85% of C is oxidized before leaving the epilimnion, so that ca. 6% of C reaches lake sediments.<sup>52</sup> Models describe how lake depth and morphometry greatly influences these values because shorter sinking times for seston provide fewer opportunities for mineralization; thus incorporation of C should be most efficient and C sequestration rates should be greater in shallow

lakes.<sup>36,88,89</sup> Counteracting this is the influence of bioturbation, resuspension, oxygenated sediment conditions, and generally faster flushing rates that exist in shallower lakes, which can enhance degradation after deposition, encourage export from the lake and reduce C burial efficiency.<sup>90–92</sup> Lake morphometry is also important because C sequestration varies spatially within basins, with sediment focusing in the deeper areas distal from degradation pressures in the littoral zone.<sup>93,94</sup> Such considerations are highly relevant for C budgets in lake-rich landscapes because most lakes globally are small and shallow.<sup>16</sup> Benthic algal production usually exceeds planktonic production in shallow lakes but the relative influence that this has on C sequestration is poorly quantified.<sup>11</sup> Because some palaeolimnological proxies such as diatoms can indicate relative planktonic: benthic production, sediment core analyses provide a simple but, as yet, under-utilized means to quantify how benthic–pelagic balances influence net C sequestration.

Another important process to be considered is changes to the sediment record following deposition.<sup>8</sup> Most sediment decomposition occurs in the first 5 years after deposition (e.g., around 20% of the C and 30% of the N is mineralized over this timescale).<sup>66,88,95</sup> Selective loss of nitrogenous OM in the upper sediments reflects the lability of compounds such as proteins and chlorophylls in comparison to terrestrial materials such as lignins and cellulose.<sup>96</sup> Below this zone, the preservation of sedimentary OM is more stable,<sup>88</sup> and therefore many lake C sequestration studies exclude the less stable upper ca. 10 cm of sediment because it is unrepresentative.<sup>33</sup> Mineralization of C in lake sediments is positively correlated with lake temperature, with projected future temperature increases leading to a 4–27% decline in lake OC burial.<sup>97</sup> However, warming also increases the delivery of pelagic OC to sediments, which may offset a reduction in burial efficiency of OC from mineralization.<sup>86</sup> The importance of the sediment–water interface in methanogenesis is also becoming more widely recognized.<sup>8</sup> In the light of these complex and interacting processes, palaeolimnology is able to integrate net C sequestration under different climatic conditions to provide an overview of likely C sequestration trajectories. For example, comparisons of Holocene sediment cores in an undisturbed region of Greenland show that mean CARs do not differ substantially between warmer and cooler periods, suggesting that although C production and mineralization rates might have changed, other factors that influence C sequestration (e.g., land to lake DOC flux, C production changes

associated with water level fluctuations) have compensated for them in this region.<sup>31</sup> Holocene core surveys in Europe and North America similarly attribute fluctuations in CARs to land use rather than climate.<sup>30</sup> Therefore, whilst limnological measurements of DOC fluxes or gas/dissolved gas measurements can quantify land–water C fluxes on short-medium timescales,<sup>98–100</sup> palaeolimnology can be used for long-term validation of lake C budgets. There is much scope for establishing the drivers and mechanisms of CAR variability using multiproxy palaeolimnology.

## GEC AND THE C CYCLE

Many GEC processes that influence lakes and their watersheds operate on timescales that cannot be effectively addressed using ‘real-time’ physiological, limnological, or sedimentation measurements (Figure 2). Palaeolimnology can be used to understand GEC processes retrospectively where lake measurements do not exist and provide information on the decadal–millennial timescales relevant to many GEC processes. The next section considers possible future trends in C dynamics in lakes, with examples of how lake sediment records can be used to understand the fate of C within changing terrestrial–aquatic systems.

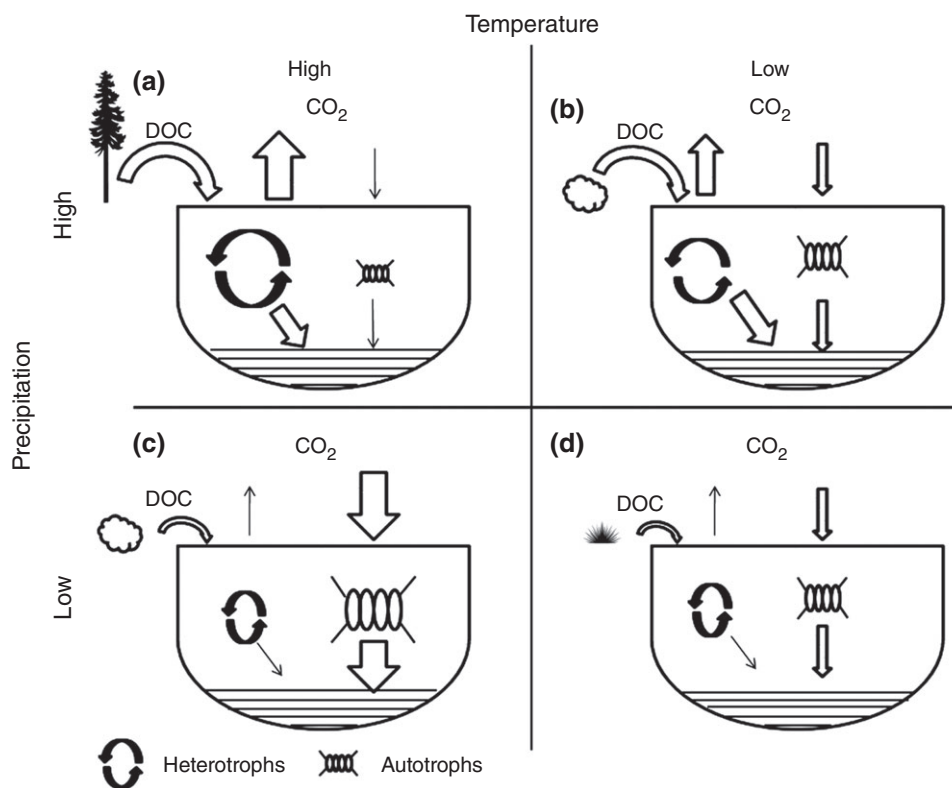
## Climate-Driven Vegetation Changes

Climate change can alter the type and density of terrestrial vegetation cover<sup>101</sup> with implications for the availability and quality of C transported (usually as DOC) from land to water.<sup>84,99,102</sup> As the northward spread of shrubs into tundra regions indicates, vegetation biomes are changing and will continue to change with future warming.<sup>103–106</sup> Climate also affects DOC delivery to lakes by altering precipitation and flow paths, which are themselves influenced by soil and vegetation development.<sup>85,107</sup> These influences on C cycling are evident when comparing lakes over different biomes (Figure 3). Some of the differences in lake C processing described in Figure 3 can be detected in surface sediments of lakes collected across vegetation transitions indicating the potential for palaeolimnology. Pollen and macrofossils are well-established indicators of terrestrial vegetation used to identify vegetation assemblages on regional to continental scales.<sup>117</sup> NIRS analysis of surface sediments demonstrates that DOC concentrations are lower in Swedish lakes above treeline (e.g., Figure 3(b)) compared to those with forested catchments where the DOC supply is more abundant

(Figure 3(a)).<sup>65</sup> In line with this observation, relative abundance of algal UVR-screening compounds are higher (clearer water) and C:N ratios lower (less terrestrially derived C) in surface sediments of lakes above treeline.<sup>118</sup> Presence of tree cover appears to suppress autotrophic production (measured as sedimentary pigments) in lakes with forested catchments, because light is limited in brown-stained lakes.<sup>15,118,119</sup> Lakes with limited catchment soil and vegetation development (e.g., Antarctic, High Arctic, and montane lakes; Figure 3(d)) often have extremely low DOC concentrations and UVR-screening pigments such as scytonemin can form a significant

proportion of the sedimentary pigment assemblage.<sup>115,120,121</sup> These spatial surveys validate the utility of certain palaeolimnological proxies in detecting the presence and effects of vegetation cover around lakes.

Such spatial observations are reflected in temporal changes of sediment records. In montane lakes that have transitioned between forested and alpine conditions, scarcity of vegetation-derived DOC inhibits primary production through UVR damage during alpine periods.<sup>122</sup> This response is more subtle in Swedish lakes at boreal-tundra treeline where low-intermediate DOC concentrations promote



**FIGURE 3** | Representation of how temperature and precipitation influence dissolved organic C (DOC) fluxes and processing within lakes and watersheds from mid-high latitudes during the summer ice-free growth periods of different climatic zones (after Ref 108). The size of the arrows indicates the relative flux or influence of each component. In 'humid and warm' boreal regions with forest cover (a) lakes are generally net heterotrophic because allochthonous DOC from terrestrial vegetation and soils is the dominant lakewater C pool, staining waters brown, limiting light penetration for autotrophic photosynthesis and providing an energy source for heterotrophs ('the microbial loop').<sup>4,98</sup> (b) In cooler regions above treeline with high-moderate precipitation (e.g., shrub tundra, and tundra heath) where permafrost restricts DOC transport and low temperatures impede terrestrial vegetation decomposition,<sup>109,110</sup> lake waters with intermediately colored with DOC<sup>111</sup> and lakes are usually weakly heterotrophic. (c) In areas of low precipitation with warm growth season temperatures (e.g., continental interiors with prairie/steppe or savannah vegetation), terrestrial vegetation growth and external DOC transport are limited by moisture availability, recalcitrant, and colorless DOC characterizes the lakewaters<sup>85,107,112</sup> and dissolved inorganic C (DIC) is usually the most abundant C pool in waters<sup>113</sup> leading to optimal conditions for autotrophic production. (d) In cold regions with low precipitation and minimal vegetation development (High Arctic, polar deserts, and Montane), allochthonous DOC sources are scarce and nutrients may strongly limit autotrophic processes with the C (and nutrient) budgets often supplemented by wind-blown dusts.<sup>114</sup> Severe lack of DOC may limit algal growth through ultraviolet radiation damage.<sup>115,116</sup> Note that the diagram represents only growth season conditions, and complete estimates lake autotrophy/heterotrophy must include the winter period which is usually ice-covered.



autotrophic production by increasing light availability, but due to greater baseline DOC abundance no UVR-screening pigments are produced.<sup>123</sup> Treeline changes in the Tamyra Peninsula, Russia increased land-lake fluxes of terrestrially derived C (with low  $\delta^{13}\text{C}$  values) during warmer and more humid conditions in the earlier Holocene and increased autochthonous uptake of  $\text{CO}_2$  (with high  $\delta^{13}\text{C}$  values) when treeline retreated.<sup>124</sup> Similarly at Khariney Lake (NE Russia), spruce forest expansion coincided with high NIRS-inferred DOC concentration in the water column and after tree-line retreat, optical transparency of the lake increased.<sup>125</sup> As well as promoting DOC delivery to lakes, enhanced precipitation promotes mire formation (inferred from pollen and peat studies) and both processes can control lake water total organic C (TOC), pH (inferred from diatoms), and color (inferred from NIRS).<sup>126</sup> Fire frequency (measured as charcoal) is also important in removing catchment vegetation and, despite temporary charcoal inputs, leads to lower lake-water TOC concentrations.<sup>126</sup> This and other studies suggest that the simple presence of vegetation is not always the primary driver of lake C processing. For example, shrub expansion in the Alaskan tundra had less influence on lake biota (diatoms and chironomids) than flooding caused by thermokarst expansion.<sup>127</sup> Fluxes of terrestrial DOC and POC (measured as C:N ratio and macrofossils of *Coenococcus*, *Sphagnum*, and *Empetrum*) in lakes from Greenland increased during the wetter Neoglacial conditions, but changes in lake C processing (as  $\delta^{13}\text{C}$ ) were most pronounced where changes in lake hydrological balance (and hence C delivery) were greatest.<sup>41</sup> Together, these palaeolimnological studies argue that precipitation/hydrology (delivery of DOC) might have a greater influence than vegetation cover (availability of DOC)<sup>128</sup> over lake C fluxes and processing,<sup>127,129</sup> providing guidance on how conceptual models developed from spatial observations (Figure 3) might be further developed. To date, however, relatively few studies have explicitly linked these processes with lake C sequestration rates and this is an area where palaeolimnology could contribute further quantitative understanding.

### Permafrost Thaw

In the next century, substantial near-surface permafrost degradation is projected to occur and thaw depth will increase.<sup>106</sup> Permafrost soils store immense amounts of frozen C, but warming threatens to activate that store.<sup>2,130–133</sup> The presence of water bodies and wetland areas is a key control on C processing in

permafrost areas as it can shift frozen C sinks into C sources.<sup>134,135</sup> Thermokarst ponds and lakes form on peaty soils or on Yedoma (deep deposits of ice-rich silt) across large parts of Siberia, Alaska, and Canada when thawing of frozen ground results in volume loss and mass failure of the land surface.<sup>136</sup> These water bodies are active sites for methanogenesis and  $\text{CO}_2$  ebullition<sup>137</sup> and may have released sufficient quantities of  $\text{CH}_4$  to influence global thermal forcing.<sup>138,139</sup> However, over the past 15,000 years some estimates suggest that thaw lakes have buried more C than they emitted.<sup>95,140</sup> Although much permafrost research has focused on C-rich areas of the Arctic and subarctic, many Arctic areas (e.g., High Arctic and polar deserts) currently have thinly developed soils due to exceptionally low temperatures, low productivity, and a lack of liquid water. In the High Arctic, as temperature increases and soils develop they are expected to become net  $\text{CH}_4$ <sup>141</sup> and  $\text{CO}_2$ <sup>142</sup> sinks. Consequently, the High Arctic has the potential to remain a strong C sink when other permafrost regions are transformed to a net C source as a result of future warming.<sup>142</sup>

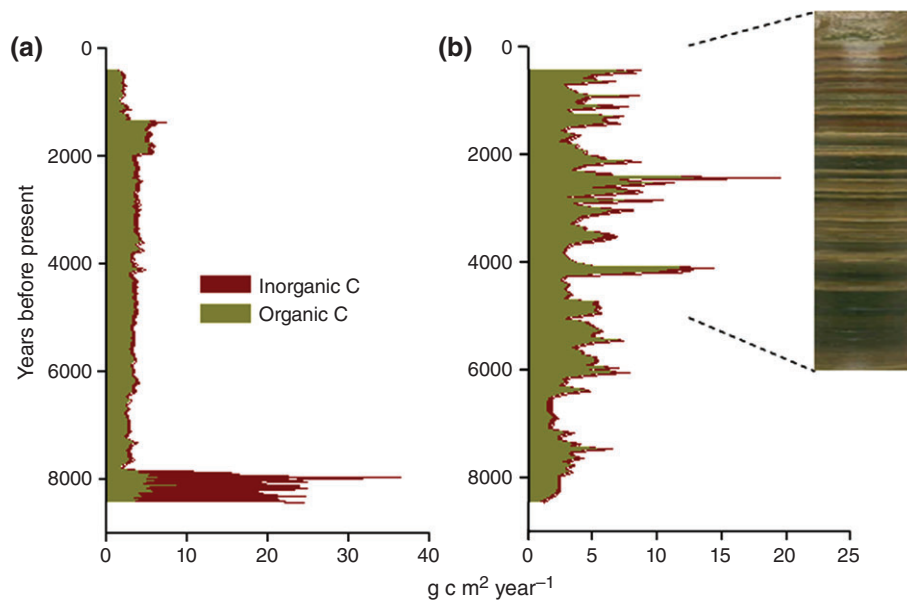
Permafrost thaw should increase the influx of C (DOC and POC) and other nutrients to lakes (Figure 3). Indeed, palaeolimnological records of  $\delta^{13}\text{C}$  and organic  $\delta^{15}\text{N}$  imply greater fluxes of N as well as C from soils into lakes when hydrological pathways are open.<sup>124</sup> Thermokarst processes that increase flooding cause greater DIC and N influx into lakes (as recorded by higher  $\delta^{15}\text{N}_{\text{org}}$  and lower  $\delta^{13}\text{C}_{\text{org}}$ ) leading to changes in aquatic biota.<sup>127</sup> In contrast with these predictions, limnological analyses show that lakes with thermokarst slumps are clearer and have lower nutrient concentrations than ones without slumps<sup>143,144</sup> and palaeolimnology shows that periphytic diatom abundance and diversity increases after slumping suggesting that water gets clearer.<sup>145</sup> After formation of thermokarst ponds, DOC concentrations systematically decline and C pools in waters shift from soil-derived to autochthonous (algal-derived).<sup>111</sup> These studies suggest that there is no simple and synchronous lake response to permafrost melt and highlight the need for systematic regional-scale palaeolimnological investigations, although the issues for sediment dating in permafrost areas where 'old C' is actively redistributed need addressing.<sup>146</sup>

### Formation of New Lakes

Glacial recession, as projected over the next century<sup>106</sup> could form entire lake districts with exceptionally lake-rich landscapes. Palaeolimnology shows

that newly exposed land surfaces after glacial recession have very specific characteristics. Carbonate can be abundant in certain glacial deposits and weathering of this material is intense in the first few centuries after recession.<sup>147,148</sup> Sediments deposited shortly after the formation of a small lake (SS2, South-west Greenland) are predominantly composed of carbonate because active weathering sequesters CO<sub>2</sub> as HCO<sub>3</sub><sup>-</sup><sup>149</sup> resulting in very high (>30 gC m<sup>-2</sup> year<sup>-1</sup>) CARs in this early period (Figure 4(a)). Newly created lake waters are usually ion-rich and, if receiving glacial meltwater, have a high loading of glacial flour leading to high minerogenic sedimentation rates.<sup>152</sup> DOC is usually scarce because of the absence of terrestrial vegetation and thus the water is very UVR transparent with glacial flour scattering the light and creating an environment suited to cyanobacteria with UVR-screening pigments.<sup>122,150</sup> Marl-secreting charophytes can thrive in these early postglacial base-rich conditions and diatom diversity is usually low.<sup>153</sup> This condition is reliant on the availability of alkaline glacial till material and may not characterize areas of noncarbonate geology or nonerosive glacial

regimes.<sup>154,155</sup> Generally though, OC production shortly after lake inception is focused within benthic areas, and limited to specialized taxa but IC sequestration is often dominant. After this initial period of rapid inorganic C sequestration, which usually lasts a few centuries, soil development (dependent on climate) begins to influence lake C processing.<sup>148,156</sup> Lake catchments in humid climates may develop thick peaty soils, which are a rich DOC source, but the delivery of C to lakes depends on hydrological pathways (e.g., permafrost presence, delivery of groundwater, and podzolization).<sup>157</sup> The consequences of this successional change are that lake water pH and calcium (Ca) concentrations usually decline whereas C and N increase.<sup>147</sup> Although the effects of this on overall C fluxes are unknown, it is clear from Lake SS2 that C sequestration declined fivefold after soil development (Figure 4(a)). Along with soil development, vegetation succession can influence C cycling by impeding sediment transport from land<sup>158</sup> and influencing N availability through presence of N<sub>2</sub>-fixing plants such as alder.<sup>159</sup> There is great potential for the application of



**FIGURE 4** | Inorganic and organic carbon (C) accumulation rates (not focusing-corrected) over the past ca. 8000 years in (a) freshwater Lake SS2<sup>150</sup> and (b) closed-basin oligosaline lake Braya Sø,<sup>151</sup> which are located with a few kilometers of each other in the Kangerlussuaq area of West Greenland. The high inorganic calcium carbonate deposition around 8000 years ago Lake SS2 sediments is most likely caused by intense weathering of carbonate minerals derived from glacial till, which declined when soils established. The absence of this feature in Braya Sø indicates heterogeneity of carbonate deposition in this area. Afterwards, mean uncorrected C accumulation rates (CARs) were similar in both lakes, but the much greater variability in Braya Sø is caused by fluctuations in water levels, and hence altered conditions for organic C production and deposition, including periods of anoxia in the bottom of the lake when autotrophic purple sulfur bacteria (that leave purple bands in the sediment—inset) were important in C processing. Distinct carbonate laminations in the Braya Sø sediments (inset) indicate periods of intense IC deposition, and yet IC is proportionally much less important than organic C in sediments of this lake. In both lakes, although there was a transition from warmer to cooler conditions ca. 4500 years ago, this had little impact on CARs; instead changes in the hydrological balance influenced CARs in Braya Sø, which is closed-basin and therefore hydrologically sensitive.

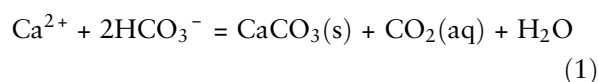
palaeolimnology to better understand links between C sequestration and lake–landscape ontogeny.<sup>160</sup>

Palaeolimnology is also well placed to understand changes in C cycling within lakes and standing waters that are formed by nonglacial processes. Holocene connectivity between land and sea has altered through relative sea-level changes,<sup>161</sup> including glacio-isostatic adjustments<sup>162,163</sup> leading to isolation of lake basins from the sea. Most palaeolimnology studies to date have focused on reconstruction of past sea levels using isolation basins.<sup>164</sup> However, marine–freshwater transitions cause fundamental changes in ecosystem structure such as changes in water residence time and stratification, shifts in nutrient limitation, and major reorganization of biotic communities. Visible transitions in sediment stratigraphies show how sediments of isolation basins are more C-rich than marine basins,<sup>165</sup> and physical connectivity with the sea influences CARs in coastal fjords.<sup>166</sup> Globally, the damming of rivers created at least 1000 new reservoirs per year between 1950 and 1970<sup>167</sup> with hydroelectric reservoirs alone (20% of all reservoirs) now covering  $3.4 \times 10^5$  km<sup>2</sup> of global land surface.<sup>168</sup> Future reservoir creation is acknowledged as one of the major drivers of changes in greenhouse gas fluxes between inland waters and the atmosphere,<sup>4</sup> and damming has trapped 1–3 billion metric tons of C in reservoirs over the past 50 years.<sup>169</sup> Reservoirs can be a particularly important CH<sub>4</sub> source, especially in the tropics where they were created by flooding forests with C-rich soils.<sup>168,170</sup> Reservoir sediment accumulation is strongly correlated with CH<sub>4</sub> production, highlighting a role for palaeolimnology in tracking potential changes in CH<sub>4</sub> fluxes.<sup>171</sup> As reservoirs get older, intensity of C processing from the flooded terrestrial OM may subside and be replaced by autochthonous production, dependent on external nutrient supply.<sup>172</sup> There is great potential to explore these ideas using palaeolimnology, but issues associated with heterogeneous sedimentation in the disturbed reservoir environments must be considered.<sup>173,174</sup>

## Hydrological Change and Inorganic C Processing

Inorganic C dynamics are important components of the C cycle in saline and hard-water lakes.<sup>4,175</sup> Allochthonous IC sources to lakes usually depend on catchment geology and surficial deposits with groundwater inputs being important in limestone regions.<sup>176,177</sup> Calcium carbonate (CaCO<sub>3</sub>) can form directly from photosynthesis if soluble Ca<sup>2+</sup> ions are present causing ‘lake whiting’ during phytoplankton

blooms (Eq. (1)). In this case, CaCO<sub>3</sub> precipitates around algal cells because the alkaline microenvironment caused by photosynthesis causes cells to act as nucleation sites.<sup>178</sup> This process is an effective vector for PIC deposition into sediments and can be enhanced during warmer years in some lakes.<sup>179</sup> Several types of aquatic plants are well known for CaCO<sub>3</sub> (marl) precipitation and can be important contributors to the sediment C sink.<sup>180,181</sup> Inorganic precipitation and sedimentation of carbonates can also occur in lakes through simple concentration, which is common in closed-basin (endorheic) lakes that lack an outflow and become saline when there is a precipitation deficit<sup>151</sup> (e.g., Figure 4(b)). Sustained CaCO<sub>3</sub> precipitation may cause lake waters to become dominated by sulfate rather than bicarbonate<sup>182</sup> and this process also has implications for lake–atmosphere C fluxes because it causes CO<sub>2</sub> enhancement of lake water at high salinities<sup>183</sup>:



These precipitation legacies preserved in lake sediments as PIC are useful in explaining present day patterns in water chemistry.<sup>184</sup> Saline lakes (>1000 μS cm<sup>-1</sup> conductivity and comprising one-fifth of the global lake surface area) are considered especially important in the C cycle<sup>185</sup> because CO<sub>2</sub> exchange with the atmosphere is chemically enhanced (up to threefold) by hydration reactions of CO<sub>2</sub> with hydroxide ions and water molecules in the lake boundary layer.<sup>186</sup>

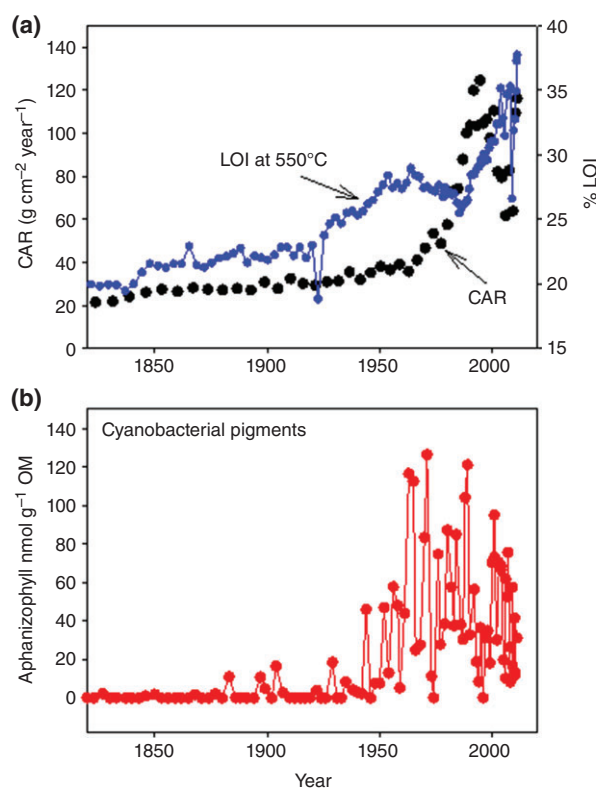
Palaeolimnology shows that past climate changes had a marked influence on IC cycling in many lakes, especially endorheic basins that are particularly responsive to climate.<sup>187</sup> Lake hydrological closure often leads to deposition of sediments that are more enriched in carbonates, as external sedimentary inputs decline.<sup>188</sup> However, higher relative abundance of IC may not necessarily translate to an increase in C sequestration rates (Figure 4). Concentration of lake waters through hydrological closure can increase carbonate sequestration and induce a switch from calcite to aragonite deposition as lake closure progresses,<sup>189</sup> but excessive evapoconcentration may cause a switch from carbonate to gypsum (CaSO<sub>4</sub>·2H<sub>2</sub>O).<sup>177</sup> In-lake processes such as meromixis and localized evaporation at lake margins can also affect ratios of calcite:gypsum deposition.<sup>187</sup> Transition from prairie to forest in North America around 4000 years ago led to the abrupt loss of annual carbonate-C laminations and predominantly

organic C burial in hydrologically closed lake basins.<sup>5,190</sup> The converse transition from forest to prairie close to this region led to heavier  $\delta^{13}\text{C}$  in sedimentary carbonates indicating that less DIC was derived from isotopically light terrestrial sources or lake primary producers.<sup>189</sup>

### Land Use Change and Soil Erosion

Soil erosion from humans has increased global river sediment transport by  $2.3 \pm 0.6$  billion metric tons per year during the Anthropocene. However, land disturbance by humans has altered C sequestration in lake basins for millennia in many regions.<sup>85,191</sup> It is apparent that over mid- to late-Holocene timescales humans can have a greater impact on sediment loads than climate.<sup>30,33,192</sup> Agricultural development alters vegetation cover and hydrological pathways, e.g., via land drainage,<sup>193</sup> and so can directly influence DOC and POC fluxes to lakes.<sup>194</sup> For example, lakewater TOC concentrations in Sweden have been extensively influenced over the past ca. 500 years by changes in agricultural practices.<sup>195,196</sup> Sediment delivery following major human impact can increase 5- to 10-fold.<sup>158,192</sup> Although erosion of C-rich soils might enhance CARs in lakes, the relationship between lake C cycling and soil erosion is rarely this simple because erosion associated with the removal of forest cover often leads to minerogenic inwash (registered as higher sedimentation rates and lower sedimentary C content). Soil erosion is also often associated with eutrophication, which increases autochthonous OC production<sup>194</sup> (Figure 5). Therefore, abrupt increases in sediment accumulation rate often follow on from land disturbance, but it is unclear whether they result in increased CARs as much of the input is minerogenic.<sup>198–200</sup> Many tropical regions are now experiencing major land disturbance associated with development which, when associated with intense monsoon rains, may have a significant influence on allochthonous POC loads.<sup>201</sup>

A major indirect effect of land disturbance is that nutrients are more efficiently transferred from the land to lakes, and/or applied as fertilizers in intensive agricultural regimes. The resultant change in lake nutrient balances can fuel a greater proportion of algal-derived C as algal growth is fertilized (Figure 5).<sup>197</sup> Hence, OC and diatom accumulation rates increased after medieval land disturbances in Sweden.<sup>45</sup> Changes to land cover may also influence sediment C preservation because sediment laminations sometimes cease after removal of forest cover indicating greater physical mixing in the water column.<sup>202,203</sup> In contrast, bottom-water anoxia may be



**FIGURE 5** | Sediment core measurements from Blelham Tarn, a small lake in the English Lake District taken from<sup>197</sup> showing changes in (a) organic C (OC) burial rates (focusing-corrected) and loss-on-ignition (LOI) at 550°C as an estimate of the % organic content and (b) concentrations of the cyanobacterial pigment aphanizophyll expressed relative to the organic content of the sediment. The proportional increase in aphanizophyll relative to OM in the sediment indicates that cyanobacteria associated with lake eutrophication, became proportionally more important within the lake C budget after ca. 1950 when piped water and sewerage systems were installed in a village within the lake catchment. The general increase in C accumulation rate (CAR) started before 1950 and is associated with agricultural intensification, with peak CARs during the 1980–1990s associated with high livestock densities, and soil erosion. Soil erosion led to a decline in LOI, due to dilution of the %OM by minerogenic material, but the CARs show that it had the net effect of stimulating C burial, probably from enhanced eutrophication. The upper sediments have very high LOI, possibly due to incomplete C degradation, but also because of the decline in soil erosion when livestock densities were reduced.

initiated by lake catchment disturbance, as occurred with early native Iroquoian horticultural activity (AD 1268–1486) in North America.<sup>204</sup> Meta-analysis of multiple sediment cores has shown that agricultural intensification has increased C sequestration rates up to eightfold in lakes from North America<sup>33,205</sup> and Europe,<sup>33</sup> although increases in Europe have been sustained for longer throughout the 20th century. Therefore, in highly disturbed mid-latitude



regions (30–50°N), human-induced burial of C in lakes generally exceeds that driven by climatic changes.

### Disruptions to Lake Biogeochemistry

The chemical balance of many lakes has been greatly altered by the delivery of human-derived pollutants during the Anthropocene.<sup>206</sup> To service human population growth and urban expansion, lakes have been used as receptacles for sewage or sewage effluent.<sup>207</sup> Unprocessed sewage has a high OM content and so may stimulate heterotrophic bacterial activity and CO<sub>2</sub> efflux from lakes. Secondary-treated sewage effluent has less OM but often remains enriched in nitrogen and phosphorus which fertilize autotrophic algal growth and so CO<sub>2</sub> uptake. The apparent benefit of enhancing C sequestration capability of lakes through fertilization is, however, offset by reduction in water quality and other ecosystem services,<sup>208</sup> and the general resilience of lakes to be forced into net autotrophy.<sup>209</sup> However, it is clear that relatively more sediment OM derives from autochthonous sources after lake fertilization<sup>200</sup> (Figure 5). Increased sedimentation rates are a positive feedback for enhancement of OM preservation,<sup>88</sup> but severe sediment anoxia can lead to methanogenesis, which may cancel out the C sequestration benefits.<sup>210,211</sup> In shallow lakes, fertilization can stimulate planktonic production at the expense of benthic plants and algae, which are very efficient C sequesterers.<sup>212</sup> These compensatory whole-ecosystem effects are very difficult to monitor using standard limnological techniques and here sedimentary analyses can provide a useful overview.<sup>213</sup> Lake eutrophication can shift algal communities over longer timescales, as described by the Si depletion hypothesis,<sup>214</sup> whereby P fertilization initially stimulates diatom production and sedimentary C sequestration, but long-term burial of Si leads to eventual replacement of siliceous algae with cyanobacteria.<sup>32</sup> As well as creating a water quality issue, little is known of the effects on mass C sequestration of such changes in algal communities.

Major modifications to the N cycle through fossil fuel combustion and artificial fertilizer production have led to the fertilization of many remote lakes through atmospheric deposition. Palaeolimnology has highlighted the widespread nature of this issue using <sup>15</sup>N stable isotopes as tracers.<sup>215,216</sup> It is estimated that 1.0–2.3 GtC year<sup>-1</sup> of terrestrial C storage may have been stimulated by anthropogenic increases in nitrogen deposition in the past century.<sup>217</sup> Lakes are not well integrated into this

estimate, despite the knowledge that N deposition can significantly modify lake ecology and, hence, C sequestration potential.<sup>218,219</sup> Atmospheric pollution also causes acidification of surface waters in poorly buffered acid-sensitive regions,<sup>220</sup> leaving strata of soot particles and metal pollution in lake sediments.<sup>42,221</sup> Acidification makes lake waters more transparent because it coagulates, bleaches, and oxidizes colored DOM<sup>98,222</sup> and therefore alters habitat availability for lake biota.<sup>223,224</sup> Palaeolimnology shows how acidification-induced water clarity increases (traced using UVR pigments) lead to either expansion of benthic algal growth (increased C sequestration)<sup>225</sup> or when acidification is extreme, suppression of algal production through UVR damage.<sup>226</sup> Acidification can also lead to long-term Ca depletion in lakes, altering lake biota, with implications for OC and IC cycling.<sup>227</sup> In recent decades, there is evidence for widespread lake water browning through increasing DOC concentrations, as lakes recover from acidification across North America and Europe.<sup>228,229</sup> Understanding how such processes interact with the recovery of in-lake biota and other stressors will be critical in quantifying changes in lake C processing in the future.<sup>230</sup>

### CONCLUSIONS

Many of the routine methods and techniques used in palaeolimnological studies can contribute to the interpretation of terrestrial-aquatic C cycling. Previous palaeolimnological studies applied to address other research questions are often of relevance to C cycling, and there is scope for further exploitation of this knowledge base. In comparison with limnological techniques, palaeolimnology has the specific advantages of being able to address questions on timescales of relevance to many GEC processes and of providing information that integrates spatially (habitat–lake–watershed–airshed) and temporally (annual–decadal). This integrative perspective is highly valuable in identifying which sources and processes might be quantitatively important to overall lake C budgets and in directing where limnological investigations need to be focused. Palaeolimnology techniques are well suited to quantifying C sequestration rates in lake basins but, unlike limnological techniques, cannot be used for directly estimating gas fluxes. However, closer integration of limnology and palaeolimnology together with quantitative sediment trap studies is key to providing holistic and quantitative understanding of lake C cycles and budgets and their relevance for earth system processes.



## ACKNOWLEDGMENTS

We thank the two reviewers of this manuscript for their insightful and helpful comments, and to Heather Moorhouse for providing the data for Figure 5. Many of the concepts in this review have been discussed and developed as part of the NERC-funded project NE/K000349/1 'Lakes and the Arctic carbon cycle.'

## FURTHER READING

Einsele G, Yan J, Hinderer M. Atmospheric carbon burial in modern lake basins and its significance for the global carbon budget. *Glob Planet Change* 2001, 30:167–195. doi:10.1016/S0921-8181(01)00105-9.

## REFERENCES

- Prairie YT. Carbocentric limnology: looking back, looking forward. *Can J Fish Aquat Sci* 2008, 65:543–548. doi:10.1139/f08-011.
- Kling GW, Kipphut GW, Miller MC. The flux of CO<sub>2</sub> and CH<sub>4</sub> from lakes and rivers in arctic Alaska. *Hydrobiologia* 1992, 240:23–36. doi:10.1007/BF00013449.
- Hanson PC, Pollard AI, Bade DL, Predick K, Carpenter SR, Foley JA. A model of carbon evasion and sedimentation in temperate lakes. *Glob Change Biol* 2004, 10:1285–1298. doi:10.1111/j.1529-8817.2003.00805.x.
- Tranvik LJ, Downing JA, Cotner JB, Loiselle SA, Striegl RG, Ballatore TJ, Dillon P, Finlay K, Fortino K, Knoll LB. Lakes and reservoirs as regulators of carbon cycling and climate. *Limnol Oceanogr* 2009, 54:2298–2314. doi:10.4319/lo.2009.54.6\_part\_2.2298.
- Dean WE, Gorham E. Magnitude and significance of carbon burial in lakes, reservoirs, and peatlands. *Geology* 1998, 26:535–538. doi:10.1130/0091-7613(1998)026<0535:MASOCB>2.3.CO;2.
- Stallard RF. Terrestrial sedimentation and the carbon cycle: coupling weathering and erosion to carbon burial. *Glob Biogeochem Cycles* 1998, 12:231–257. doi:10.1029/98GB00741.
- Alin SR, Johnson TC. Carbon cycling in large lakes of the world: a synthesis of production, burial, and lake-atmosphere exchange estimates. *Glob Biogeochem Cycles* 2007, 21:GB3002. doi:10.1029/2006GB002881.
- Cole J. Freshwater in flux. *Nat Geosci* 2013, 6:13–14. doi:10.1038/ngeo1696.
- Cole JJ, Prairie YT, Caraco NF, McDowell WH, Tranvik LJ, Striegl RG, Duarte CM, Kortelainen P, Downing JA, Middelburg JJ. Plumbing the global carbon cycle: integrating inland waters into the terrestrial carbon budget. *Ecosystems* 2007, 10:172–185. doi:10.1007/s10021-006-9013-8.
- Raymond PA, Hartmann J, Lauerwald R, Sobek S, McDonald C, Hoover M, Butman D, Striegl R, Mayorga E, Humborg C. Global carbon dioxide emissions from inland waters. *Nature* 2013, 503:355–359. doi:10.1038/nature12760.
- Vadeboncoeur Y, Vander Zanden MJ, Lodge DM. Putting the lake back together: reintegrating benthic pathways into lake food web models. *Bioscience* 2002, 52:44–54. doi:10.1641/0006-3568(2002)052[0044:PTLBTR]2.0.CO;2.
- Ask J, Karlsson J, Persson L, Ask P, Byström P, Jansson M. Whole-lake estimates of carbon flux through algae and bacteria in benthic and pelagic habitats of clear-water lakes. *Ecology* 2009, 90:1923–1932. doi:10.1890/07-1855.1.
- McGowan S, Leavitt PR. The role of paleoecology in whole-ecosystem science. In: Miao S, Carstenn S, Nungesser M, eds. *Real World Ecology*. New York: Springer; 2009, 161–208. doi:10.1007/978-0-387-77942-3\_7.
- Cole JJ, Caraco NF, Kling GW, Kratz TK. Carbon dioxide supersaturation in the surface waters of lakes. *Science* 1994, 265:1568–1570. doi:10.1126/science.265.5178.1568.
- Jansson M, Bergström A-K, Blomqvist P, Drakare S. Allochthonous organic carbon and phytoplankton/bacterioplankton production relationships in lakes. *Ecology* 2000, 81:3250–3255. doi:10.1890/0012-9658(2000)081[3250:AOCAPB]2.0.CO;2.
- Verpoorter C, Kutser T, Seekell DA, Tranvik LJ. A global inventory of lakes based on high-resolution satellite imagery. *Geophys Res Lett* 2014, 41:6396–6402. doi:10.1002/2014GL060641.
- Sobek S, Tranvik LJ, Prairie YT, Kortelainen P, Cole JJ. Patterns and regulation of dissolved organic carbon: an analysis of 7,500 widely distributed lakes. *Limnol Oceanogr* 2007, 52:1208–1219. doi:10.4319/lo.2007.52.3.1208.
- Elser JJ, Andersen T, Baron JS, Bergström A-K, Jansson M, Kyle M, Nydick KR, Steger L, Hessen DO.

- Shifts in lake N:P stoichiometry and nutrient limitation driven by atmospheric nitrogen deposition. *Science* 2009, 326:835–837. doi:10.1126/science.1176199.
19. Tulonen T, Kankaala P, Ojala A, Arvola L. Factors controlling production of phytoplankton and bacteria under ice in a humic, boreal lake. *J Plankton Res* 1994, 16:1411–1432. doi:10.1093/plankt/16.10.1411.
  20. Michmerhuizen CM, Striegl RG, McDonald ME. Potential methane emission from north-temperate lakes following ice melt. *Limnol Oceanogr* 1996, 41:985–991. doi:10.4319/lo.1996.41.5.0985.
  21. Striegl RG, Michmerhuizen CM. Hydrologic influence on methane and carbon dioxide dynamics at two north-central Minnesota lakes. *Limnol Oceanogr* 1998, 43:1519–1529. doi:10.4319/lo.1998.43.7.1519.
  22. Hampton SE, Moore MV, Ozersky T, Stanley EH, Polashenski CM, Galloway AW. Heating up a cold subject: prospects for under-ice plankton research in lakes. *J Plankton Res* 2015, 37:277–284. doi:10.1093/plankt/fbv002.
  23. McGowan S, Leavitt PR, Hall RI, Wolfe BB, Edwards TW, Karst-Riddoch T, Vardy SR. Interdecadal declines in flood frequency increase primary production in lakes of a northern river delta. *Glob Change Biol* 2011, 17:1212–1224. doi:10.1111/j.1365-2486.2010.02304.x.
  24. Anderson NJ. Landscape disturbance and lake response: temporal and spatial perspectives. *Freshw Rev* 2014, 7:77–120. doi:10.1608/FRJ-7.2.811.
  25. Heiri O, Lotter AF, Lemcke G. Loss on ignition as a method for estimating organic and carbonate content in sediments: reproducibility and comparability of results. *J Paleolimnol* 2001, 25:101–110. doi:10.1023/A:1008119611481.
  26. Dean WE. Determination of carbonate and organic matter in calcareous sediments and sedimentary rocks by loss on ignition: comparison with other methods. *J Sediment Petrol* 1974, 44:242–248. doi:10.1306/74D729D2-2B21-11D7-8648000102C1865D.
  27. Meyers PA, Teranes JL. Sediment organic matter. In: Last WM, Smol JP, eds. *Tracking environmental change using lake sediments*. Dordrecht: Kluwer; 2001, 239–270. doi:10.1007/0-306-47670-3\_9.
  28. Tenzer GE, Meyers PA, Knoop P. Sources and distribution of organic and carbonate carbon in surface sediments of Pyramid Lake, Nevada. *J Sediment Res* 1997, 67:884–890. doi:10.1306/D4268667-2B26-11D7-8648000102C1865D.
  29. Campbell I, Campbell C, Vitt D, Kelker D, Laird L, Trew D, Kotak B, LeClair D, Bayley S. A first estimate of organic carbon storage in Holocene lake sediments in Alberta, Canada. *J Paleolimnol* 2000, 24:395–400. doi:10.1023/A:1008103605817.
  30. Kastowski M, Hinderer M, Vecsei A. Long-term carbon burial in European lakes: analysis and estimate. *Glob Biogeochem Cycles* 2011, 25:GB3019. doi:10.1111/gcb.12491.
  31. Anderson NJ, D'andrea W, Fritz SC. Holocene carbon burial by lakes in SW Greenland. *Glob Change Biol* 2009, 15:2590–2598. doi:10.1029/2010GB003874.
  32. Anderson NJ. A whole-basin diatom accumulation rate for a small eutrophic lake in Northern Ireland and its palaeoecological implications. *J Ecol* 1989, 77:926–946. doi:10.2307/2260814.
  33. Anderson NJ, Dietz R, Engstrom D. Land-use change, not climate, controls organic carbon burial in lakes. *Proc R Soc Lond B Biol Sci* 2013, 280:20131278. doi:10.1098/rspb.2013.1278.
  34. Anderson NJ, Bennion H, Lotter A. Lake eutrophication and its implications for organic carbon sequestration in Europe. *Glob Change Biol* 2014, 20:2741–2751. doi:10.1111/gcb.12584.
  35. Kortelainen P, Pajunen H, Rantakari M, Saarnisto M. A large carbon pool and small sink in boreal Holocene lake sediments. *Glob Change Biol* 2004, 10:1648–1653. doi:10.1111/j.1365-2486.2004.00848.x.
  36. Ferland ME, Giorgio PA, Teodoru CR, Prairie YT. Long-term C accumulation and total C stocks in boreal lakes in northern Québec. *Glob Biogeochem Cycles* 2012, 26:GB0E04. doi:10.1029/2011GB004241.
  37. Lowag J, Bull J, Vardy M, Miller H, Pinson L. High-resolution seismic imaging of a Younger Dryas and Holocene mass movement complex in glacial Lake Windermere, UK. *Geomorphology* 2012, 171:42–57. doi:10.1016/j.geomorph.2012.05.002.
  38. Vanneste M, De Batist M, Golmshtok A, Kremlev A, Versteeg W. Multi-frequency seismic study of gas hydrate-bearing sediments in Lake Baikal, Siberia. *Mar Geol* 2001, 172:1–21. doi:10.1016/S0025-3227(00)00117-1.
  39. Prentice I, Harrison S, Bartlein P. Global vegetation and terrestrial carbon cycle changes after the last ice age. *New Phytol* 2011, 189:988–998. doi:10.1111/j.1469-8137.2010.03620.x.
  40. Heggen MP, Birks HH, Anderson NJ. Long-term ecosystem dynamics of a small lake and its catchment in west Greenland. *Holocene* 2010, 20:1207–1222. doi:10.1177/0959683610371995.
  41. Leng MJ, Wagner B, Anderson NJ, Bennike O, Woodley E, Kemp SJ. Deglaciation and catchment ontogeny in coastal south-west Greenland: implications for terrestrial and aquatic carbon cycling. *J Quat Sci* 2012, 27:575–584. doi:10.1002/jqs.2544.
  42. Rose N. Inorganic fly-ash spheres as pollution tracers. *Environ Pollut* 1996, 91:245–252. doi:10.1016/0269-7491(95)00044-5.
  43. Whitlock C, Larsen C. Charcoal as a fire proxy. In: Smol JP, Birks HJB, Last WM, eds. *Tracking*

- Environmental Change Using Lake Sediments*. Vol. 3, Terrestrial, Algal and Siliceous Indicators. Dordrecht: Kluwer Academic Publishers; 2001, 75–97. doi:10.1007/0-306-47668-1-5.
44. Bunting L, Leavitt PR, Gibson CE, McGee EJ, Hall VA. Degradation of water quality in Lough Neagh, Northern Ireland, by diffuse nitrogen flux from a phosphorus-rich catchment. *Limnol Oceanogr* 2007, 52:354–369. doi:10.4319/lo.2007.52.1.0354.
  45. Anderson NJ, Renberg I, Segerstrom U. Diatom production responses to the development of early agriculture in a boreal forest lake-catchment (Kassjön, northern Sweden). *J Ecol* 1995, 83:809–822. doi:10.2307/2261418.
  46. Ryves DB, Juggins S, Fritz SC, Battarbee RW. Experimental diatom dissolution and the quantification of microfossil preservation in sediments. *Palaeogeogr Palaeoclimatol Palaeoecol* 2001, 172:99–113. doi:10.1016/S0031-0182(01)00273-5.
  47. Smol JP, Birks HJB, Last WM. Tracking environmental change using lake sediments. *Zoological Indicators*, vol. 4. Dordrecht: Kluwer Academic Publishers; 2002. doi:10.1007/0-306-47671-1.
  48. Brodersen KP, Pedersen O, Lindegaard C, Hamburger K. Chironomids (Diptera) and oxygen-regulatory capacity: an experimental approach to paleolimnological interpretation. *Limnol Oceanogr* 2004, 49:1549–1559. doi:10.4319/lo.2004.49.5.1549.
  49. Rawcliffe R, Sayer CD, Woodward G, Grey J, Davidson TA, Jones JL. Back to the future: using palaeolimnology to infer long-term changes in shallow lake food webs. *Freshw Biol* 2010, 55:600–613. doi:10.1111/j.1365-2427.2009.02280.x.
  50. Davidson TA, Sayer CD, Perrow M, Bramm M, Jeppesen E. The simultaneous inference of zooplanktivorous fish and macrophyte density from sub-fossil cladoceran assemblages: a multivariate regression tree approach. *Freshw Biol* 2010, 55:546–564. doi:10.1111/j.1365-2427.2008.02124.x.
  51. Wiik E, Bennion H, Sayer CD, Davidson TA, McGowan S, Patmore IR, Clarke SJ. Ecological sensitivity of marl lakes to nutrient enrichment: evidence from Hawes Water, UK. *Freshw Biol* 2015, 60:2226–2247. doi:10.1111/fwb.12650.
  52. Meyer PA, Ishiwatari R. Lacustrine organic geochemistry—an overview of indicators of organic matter sources and diagenesis in lake sediments. *Org Geochem* 1993, 20:867–900. doi:10.1016/0146-6380(93)90100-P.
  53. McGowan S. Pigment studies. In: Elias S, Mock CJ, eds. *Encyclopedia of Quaternary Sciences*. Amsterdam: Elsevier; 2013. Vol. 3, 326–338. doi:10.1016/B978-0-444-53643-3.00235-1.
  54. Leavitt PR, Vinebrooke RD, Donald DB, Smol JP, Schindler DW. Past ultraviolet radiation environments in lakes derived from fossil pigments. *Nature* 1997, 388:457–459. doi:10.1038/41296.
  55. Tani Y, Kurihara K, Nara F, Itoh N, Soma M, Soma Y, Tanaka A, Yoneda M, Hirota M, Shibata Y. Temporal changes in the phytoplankton community of the southern basin of Lake Baikal over the last 24,000 years recorded by photosynthetic pigments in a sediment core. *Org Geochem* 2002, 33:1621–1634. doi:10.1016/S0146-6380(02)00107-9.
  56. Talbot HM, Farrimond P. Bacterial populations recorded in diverse sedimentary bihopanoid distributions. *Org Geochem* 2007, 38:1212–1225. doi:10.1016/j.orggeochem.2007.04.006.
  57. Sessions AL, Zhang L, Welander PV, Doughty D, Summons RE, Newman DK. Identification and quantification of polyfunctionalized hopanoids by high temperature gas chromatography–mass spectrometry. *Org Geochem* 2013, 56:120–130. doi:10.1016/j.orggeochem.2012.12.009.
  58. Naeher S, Niemann H, Peterse F, Smittenberg RH, Zigah PK, Schubert CJ. Tracing the methane cycle with lipid biomarkers in Lake Rotsee (Switzerland). *Org Geochem* 2014, 66:174–181. doi:10.1016/j.orggeochem.2013.11.002.
  59. Carnevali MP, Rohrsen M, Williams M, Michaud A, Adams H, Berisford D, Love G, Priscu J, Rassuchine O, Hand K. Methane sources in arctic thermokarst lake sediments on the North Slope of Alaska. *Geobiology* 2015, 13:181–197. doi:10.1111/gbi.12124.
  60. Costello AM, Auman AJ, Macalady JL, Scow KM, Lidstrom ME. Estimation of methanotroph abundance in a freshwater lake sediment. *Environ Microbiol* 2002, 4:443–450. doi:10.1046/j.1462-2920.2002.00318.x.
  61. Van Winden JF, Talbot HM, Kip N, Reichart G-J, Pol A, McNamara NP, Jetten MS, den Camp HJO, Damste JSS. Bacteriohopanepolyol signatures as markers for methanotrophic bacteria in peat moss. *Geochim Cosmochim Acta* 2012, 77:52–61. doi:10.1016/j.gca.2011.10.026.
  62. Anderson-Carpenter LL, McLachlan JS, Jackson ST, Kuch M, Lumibao CY, Poinar HN. Ancient DNA from lake sediments: bridging the gap between paleoecology and genetics. *BMC Evol Biol* 2011, 11:30. doi:10.1186/1471-2148-11-30.
  63. Tolu J, Gerber L, Boily J-F, Bindler R. High-throughput characterization of sediment organic matter by pyrolysis–gas chromatography/mass spectrometry and multivariate curve resolution: a promising analytical tool in (paleo) limnology. *Anal Chim Acta* 2015, 23:93–102. doi:10.1016/j.aca.2015.03.043.
  64. Korsman T, Nilsson M, Oehman J, Renberg I. Near-infrared reflectance spectroscopy of sediments: a potential method to infer the past pH of lakes. *Environ Sci*

- Technol* 1992, 26:2122–2126. doi:10.1021/es00035a008.
65. Rosén P, Dábakk E, Renberg I, Nilsson M, Hall R. Near-infrared spectrometry (NIRS): a new tool for inferring past climatic changes from lake sediments. *Holocene* 2000, 10:161–166. doi:10.1191/095968300670554274.
66. Galman V, Rydberg J, de-Luna SS, Bindler R, Renberg I. Carbon and nitrogen loss rates during aging of lake sediment: changes over 27 years studied in varved lake sediment. *Limnol Oceanogr* 2008, 53:1076–1082. doi:10.4319/lo.2008.53.3.1076.
67. Maberly SC, Barker PA, Stott AW, De Ville MM. Catchment productivity controls CO<sub>2</sub> emissions from lakes. *Nat Clim Change* 2013, 3:391–394. doi:10.1038/nclimate1748.
68. Van Hardenbroek M, Heiri O, Parmentier F-JW, Bastviken D, Ilyashuk B, Wiklund J, Hall R, Lotter A. Evidence for past variations in methane availability in a Siberian thermokarst lake based on δ<sup>13</sup>C of chitinous invertebrate remains. *Quat Sci Rev* 2013, 66:74–84. doi:10.1016/j.quascirev.2012.04.009.
69. Frossard V, Verneaux V, Millet L, Jenny JP, Arnaud F, Magny M, Perga ME. Reconstructing long-term changes (150 years) in the carbon cycle of a clear-water lake based on the stable carbon isotope composition (δ<sup>13</sup>C) of chironomid and cladoceran subfossil remains. *Freshw Biol* 2014, 59:789–802. doi:10.1111/fwb.12304.
70. Herzsuh U, Mischke S, Meyer H, Plessen B, Zhang C. Using variations in the stable carbon isotope composition of macrophyte remains to quantify nutrient dynamics in lakes. *J Paleolimnol* 2010, 43:739–750. doi:10.1007/s10933-009-9365-0.
71. Wooller MJ, Swain DL, Ficken KJ, Agnew ADQ, Street-Perrott FA, Eglinton G. Late quaternary vegetation changes around Lake Rutundu, Mount Kenya, East Africa: evidence from grass cuticles, pollen and stable carbon isotopes. *J Quat Sci* 2003, 18:3–15. doi:10.1002/jqs.725.
72. Huang YA, Street-Perrott FA, Metcalfe SE, Brenner M, Moreland M, Freeman K. Climate change as the dominant control on glacial–interglacial variations in C<sub>3</sub> and C<sub>4</sub> plant abundance. *Science* 2001, 293:1647–1651. doi:10.1126/science.1060143.
73. Conley DJ. An interlaboratory comparison for the measurement of biogenic silica in sediments. *Mar Chem* 1988, 63:39–48. doi:10.1016/S0304-4203(98)00049-8.
74. Panizzo VN, Swann GEA, Mackay AW, Vologina E, Sturm M, Pashley V, Horstwood MSA. Insights into the transfer of silicon isotopes into the sediment record. *Biogeosci Discuss* 2015, 12:9369–9391. doi:10.5194/bgd-12-9369-2015.
75. Björck S, Bennike O, Possnert G, Wohlfarth B, Digerfeldt G. A high-resolution <sup>14</sup>C dated sediment sequence from southwest Sweden: age comparisons between different components of the sediment. *J Quat Sci* 1998, 13:85–89. doi:10.1002/(SICI)1099-1417(199801/02).
76. Dutta K, Schuur E, Neff J, Zimov S. Potential carbon release from permafrost soils of Northeastern Siberia. *Glob Change Biol* 2006, 12:2336–2351. doi:10.1111/j.1365-2486.2006.01259.x.
77. Hilton J, Lishman J, Allen P. The dominant processes of sediment distribution and focusing in a small, eutrophic, monomictic lake. *Limnol Oceanogr* 1986, 31:125–133. doi:10.4319/lo.1986.31.1.0125.
78. Bradshaw EG, Rasmussen P, Odgaard BV. Mid- to late-Holocene land-use change and lake development at Dallund Sø, Denmark: synthesis of multiproxy data, linking land and lake. *Holocene* 2005, 15:1152–1162. doi:10.1191/0959683605hl887rp.
79. McGowan S, Grauert M, Anderson NJ. A late Holocene record of landscape degradation from Heygsvatn, the Faroe Islands. *Palaeogeogr Palaeoclimatol Palaeoecol* 2008, 264:11–24. doi:10.1016/j.palaeo.2008.03.003.
80. Forsius M, Saloranta T, Arvola L, Salo S, Verta M, Ala-Opas P, Rask M, Vuorenmaa J. Physical and chemical consequences of artificially deepened thermocline in a small humic lake—a paired whole-lake climate change experiment. *Hydrol Earth Syst Sci* 2010, 14:2629–2642. doi:10.5194/hess-14-2629-2010.
81. Cory RM, Ward CP, Crump BC, Kling GW. Sunlight controls water column processing of carbon in arctic fresh waters. *Science* 2014, 345:925–928. doi:10.1126/science.1253119.
82. Eller G, Deines P, Grey J, Richnow H-H, Krüger M. Methane cycling in lake sediments and its influence on chironomid larval δ<sup>13</sup>C. *FEMS Microbiol Ecol* 2005, 54:339–350. doi:10.1016/j.femsec.2005.04.006.
83. Jansson M, Persson L, De Roos AM, Jones RI, Tranvik LJ. Terrestrial carbon and intraspecific size-variation shape lake ecosystems. *Trends Ecol Evol* 2007, 22:316–322. doi:10.1016/j.tree.2007.02.015.
84. Marcarelli AM, Baxter CV, Mineau MM, Hall RO Jr. Quantity and quality: unifying food web and ecosystem perspectives on the role of resource subsidies in freshwaters. *Ecology* 2011, 92:1215–1225. doi:10.1890/10-2240.1.
85. Hanson PC, Hamilton DP, Stanley EH, Preston N, Langman OC, Kara EL. Fate of allochthonous dissolved organic carbon in lakes: a quantitative approach. *PLoS ONE* 2011, 6:e21884. doi:10.1371/journal.pone.0021884.
86. Kritzberg ES, Granéli W, Björk J, Brönmark C, Hallgren P, Nicolle A, Persson A, Hansson LA. Warming and browning of lakes: consequences for pelagic carbon metabolism and sediment delivery. *Freshw Biol* 2014, 59:325–336. doi:10.1111/fwb.12267.



87. Leavitt PR. A review of factors that regulate carotenoid and chlorophyll deposition and fossil pigment abundance. *J Paleolimnol* 1993, 9:109–127. doi:10.1007/BF00677513.
88. Cuddington K, Leavitt PR. An individual-based model of pigment flux in lakes: implications for organic biogeochemistry and paleoecology. *Can J Fish Aquat Sci* 1999, 56:1964–1977. doi:10.1139/f99-108.
89. Sobek S, Durisch-Kaiser E, Zurbrugg R, Wongfun N, Wessels M, Pasche N, Wehrli B. Organic carbon burial efficiency in lake sediments controlled by oxygen exposure time and sediment source. *Limnol Oceanogr* 2009, 54:2243–2254. doi:10.4319/lo.2009.54.6.2243.
90. Kristensen P, Sondergaard M, Jeppesen E. Resuspension in a shallow eutrophic lake. *Hydrobiologia* 1992, 228:101–109. doi:10.1007/BF00006481.
91. Dong X, Bennion H, Battarbee R, Yang X, Yang H, Liu E. Tracking eutrophication in Taihu Lake using the diatom record: potential and problems. *J Paleolimnol* 2008, 40:413–429. doi:10.1007/s10933-007-9170-6.
92. Mackay EB, Jones ID, Folkard AM, Barker P. Contribution of sediment focussing to heterogeneity of organic carbon and phosphorus burial in small lakes. *Freshw Biol* 2012, 57:290–304. doi:10.1111/j.1365-2427.2011.02616.x.
93. den Heyer C, Kalff J. Organic matter mineralization rates in sediments: a within- and among-lake study. *Limnol Oceanogr* 1998, 43:695–705. doi:10.4319/lo.1998.43.4.0695.
94. Anderson NJ. Spatial pattern of recent sediment and diatom accumulation in a small, monomictic, eutrophic lake. *J Paleolimnol* 1990, 3:143–160. doi:10.1007/BF00414068.
95. Sobek S. Climate science: cold carbon storage. *Nature* 2014, 511:415–417. doi:10.1038/nature13643.
96. Cranwell PA. Decomposition of aquatic biota and sediment formation: lipid components of two blue-green algal species and of detritus resulting from microbial attack. *Freshw Biol* 1976, 6:481–488. doi:10.1111/j.1365-2427.1976.tb01639.x.
97. Gudaszczyk C, Bastviken D, Steger K, Premke K, Sobek S, Tranvik LJ. Temperature-controlled organic carbon mineralization in lake sediments. *Nature* 2010, 466:478–481. doi:10.1038/nature09186.
98. Molot LA, Dillon PJ. Storage of terrestrial carbon in boreal lake sediments and evasion to the atmosphere. *Glob Biogeochem Cycles* 1996, 10:483–492. doi:10.1029/96GB01666.
99. Sobek S, Tranvik LJ, Cole JJ. Temperature independence of carbon dioxide supersaturation in global lakes. *Glob Biogeochem Cycles* 2005, 19:GB2003. doi:10.1029/2004GB002264.
100. Lepistö A, Futter MN, Kortelainen P. Almost 50 years of monitoring shows that climate, not forestry, controls long-term organic carbon fluxes in a large boreal watershed. *Glob Change Biol* 2014, 20:1225–1237. doi:10.1111/gcb.12491.
101. Tape K, Sturm M, Racine C. The evidence for shrub expansion in northern Alaska and the Pan-Arctic. *Glob Change Biol* 2006, 12:686–702. doi:10.1111/j.1365-2486.2006.01128.x.
102. Lapierre JF, Giorgio PA. Geographical and environmental drivers of regional differences in the lake pCO<sub>2</sub> versus DOC relationship across northern landscapes. *J Geophys Res: Biogeosci* 2005–2012, 2012:117. doi:10.1029/2012JG001945.
103. Bhatt US, Walker DA, Reynolds MK, Comiso JC, Epstein HE, Jia G, Gens R, Pinzon JE, Tucker CJ, Tweedie CE. Circumpolar Arctic tundra vegetation change is linked to sea ice decline. *Earth Interact* 2010, 14:1–20. doi:10.1175/2010EI315.1.
104. Tape KD, Verbyla D, Welker JM. Twentieth century erosion in Arctic Alaska foothills: The influence of shrubs, runoff, and permafrost. *J Geophys Res: Biogeosci* 2005–2012, 2011:116. doi:10.1029/2011JG001795.
105. Cahoon SMP, Sullivan PF, Shaver GF, Welker JM, Post E. Interactions among shrub cover and the soil microclimate may determine future Arctic carbon budgets. *Ecol Lett* 2012, 15:1415–1422. doi:10.1111/j.1461-0248.2012.01865.x.
106. Climate Change 2013. The Physical Science Basis. Working Group I Contribution to the Fifth Assessment Report of the Intergovernmental Panel on Climate Change. Cambridge, United Kingdom and New York, USA.
107. Kothawala DN, Stedmon CA, Müller RA, Weyhenmeyer GA, Köhler SJ, Tranvik LJ. Controls of dissolved organic matter quality: evidence from a large-scale boreal lake survey. *Glob Change Biol* 2014, 20:1101–1114. doi:10.1111/gcb.12488.
108. Mulholland P. Large-scale patterns in dissolved organic carbon concentration, flux, and sources. In: Findlay S, ed. *Aquatic Ecosystems: Interactivity of Dissolved Organic Matter*. New York: Academic Press/Elsevier Science; 2002, 139–159.
109. Sjögersten S, Wookey PA. The impact of climate change on ecosystem carbon dynamics at the Scandinavian mountain birch forest-tundra heath ecotone. *AMBIO* 2009, 38:2–10. doi:10.1579/0044-7447-38.1.2.
110. Pries CEH, Schuur EA, Crummer KG. Holocene carbon stocks and carbon accumulation rates altered in soils undergoing permafrost thaw. *Ecosystems* 2012, 15:162–173. doi:10.1007/s10021-011-9500-4.
111. Pokrovsky OS, Shirokova LS, Kirpotin SN, Audry S, Viers J, Dupre B. Effect of permafrost thawing on organic carbon and trace element colloidal speciation in the thermokarst lakes of western Siberia.



- Biogeosciences* 2011, 3:565–583. doi:10.5194/bg-8-565-2011.
112. Anderson NJ, Stedmon CA. The effect of evapoconcentration on dissolved organic carbon concentration and quality in lakes of SW Greenland. *Freshw Biol* 2007, 52:280–289. doi:10.1111/j.1365-2427.2006.01688.x.
  113. Finlay K, Vogt RJ, Bogard MJ, Wissel B, Tutolo BM, Simpson GL, Leavitt PR. Decrease in CO<sub>2</sub> efflux from northern hardwater lakes with increasing atmospheric warming. *Nature* 2015, 519:215–218. doi:10.1038/nature14172.
  114. Barrett JE, Virginia RA, Lyons WB, McKnight DM, Priscu JC, Doran PT, Fountain AG, Wall DH, Moorhead D. Biogeochemical stoichiometry of Antarctic dry valley ecosystems. *J Geophys Res: Biogeosci* 2005–2012, 2007:112. doi:10.1029/2005JG000141.
  115. Hodgson DA, Vyverman W, Verleyen E, Sabbe K, Leavitt PR, Taton A, Squier A, Keely BJ. Environmental factors influencing the pigment composition of in situ benthic microbial communities in east Antarctic lakes. *Aquat Microb Ecol* 2004, 37:247–263. doi:10.3354/ame037247.
  116. Bothwell ML, Sherbot DM, Pollock CM. Ecosystem response to solar ultraviolet-B radiation: influence of trophic-level interactions. *Science* 1994, 265:97–100. doi:10.1126/science.265.5168.97.
  117. Prentice C, Guiot J, Huntley B, Jolly D, Cheddadi R. Reconstructing biomes from palaeoecological data: a general method and its application to European pollen data at 0 and 6 ka. *Clim Dyn* 1996, 12:185–194. doi:10.1007/BF00211617.
  118. Reuss N, Leavitt PR, Hall RI, Bigler C, Hammarlund D. Development and application of sedimentary pigments for assessing effects of climatic and environmental changes on subarctic lakes in northern Sweden. *J Paleolimnol* 2009, 43:149–169. doi:10.1007/s10933-009-9323-x.
  119. Sobek S, Algesten G, Bergström AK, Jansson M, Tranvik LJ. The catchment and climate regulation of pCO<sub>2</sub> in boreal lakes. *Glob Change Biol* 2003, 9:630–641. doi:10.1046/j.1365-2486.2003.00619.x.
  120. Michelutti N, Douglas MS, Lean DR, Smol JP. Physical and chemical limnology of 34 ultra-oligotrophic lakes and ponds near Wynniatt Bay, Victoria Island, Arctic Canada. *Hydrobiologia* 2002, 482:1–13. doi:10.1023/A:1021201704844.
  121. Verleyen E, Hodgson DA, Sabbe K, Vyverman W. Late Holocene changes in ultraviolet radiation penetration recorded in an East Antarctic lake. *J Paleolimnol* 2005, 34:191–202. doi:10.1007/s10933-005-4402-0.
  122. Leavitt PR, Cumming BF, Smol JP, Reasoner M, Pienitz R, Hodgson DA. Climatic control of ultraviolet radiation effects on lakes. *Limnol Oceanogr* 2003, 48:2062–2069. doi:10.4319/lo.2003.48.5.2062.
  123. Reuss NS, Hammarlund D, Rundgren M, Segerstrom U, Eriksson L, Rosen P. Lake ecosystem responses to Holocene climate change at the subarctic tree-line in Northern Sweden. *Ecosystems* 2010, 13:393–409. doi:10.1007/s10021-010-9326-5.
  124. Wolfe BB, Edwards TWD. Hydrologic control on the oxygen–isotope relation between sediment cellulose and lake water, western Taimyr Peninsula, Russia: implications for the use of surface sediment calibrations in paleolimnology. *J Paleolimnol* 1997, 18:283–291. doi:10.1023/A:1007997422237.
  125. Jones V, Solovieva N, Self A, McGowan S, Rosén P, Salonen J, Seppä H, Väiranta M, Parrott E, Brooks S. The influence of Holocene tree-line advance and retreat on an arctic lake ecosystem: a multi-proxy study from Kharinei Lake, North Eastern European Russia. *J Paleolimnol* 2011, 46:123–137. doi:10.1007/s10933-011-9528-7.
  126. Rosén P, Hammarlund D. Effects of climate, fire and vegetation development on Holocene changes in total organic carbon concentration in three boreal forest lakes in northern Sweden. *Biogeosciences* 2007, 4:975–984. doi:10.5194/bg-4-975-2007.
  127. Medeiros AS, Taylor DJ, Couse M, Hall RI, Quinlan R, Wolfe BB. Biological and nutrient responses to catchment disturbance and warming in small lakes near the Alaskan tundra–taiga boundary. *Holocene* 2014, 24:1308–1319. doi:10.1177/0959683614540955.
  128. Engstrom DR. Influence of vegetation and hydrology on the humus budgets of Labrador lakes. *Can J Fish Aquat Sci* 1987, 44:1306–1314. doi:10.1139/f87-154.
  129. Kokfelt U, Rosén P, Schoning K, Christensen TR, Förster J, Karlsson J, Reuss N, Rundgren M, Callaghan TV, Jonasson C. Ecosystem responses to increased precipitation and permafrost decay in subarctic Sweden inferred from peat and lake sediments. *Glob Change Biol* 2009, 15:1652–1663. doi:10.1111/j.1365-2486.2009.01880.x.
  130. Walvoord MA, Striegl RG. Increased groundwater to stream discharge from permafrost thawing in the Yukon River basin: potential impacts on lateral export of carbon and nitrogen. *Geophys Res Lett* 2007, 34:L12402. doi:10.1029/2007GL030216.
  131. Frey KE, McClelland JW. Impacts of permafrost degradation on arctic river biogeochemistry. *Hydrol Process* 2009, 23:169–182. doi:10.1002/hyp.7196.
  132. Grosse G, Harden J, Turetsky M, McGuire AD, Camill P, Tarnocai C, Frolking S, Schuur EA, Jorgenson T, Marchenko S. Vulnerability of high-latitude soil organic carbon in North America to

- disturbance. *J Geophys Res: Biogeosci* 2005–2012, 2011:116. doi:10.1029/2010JG001507.
133. Schuur EA, Bockheim J, Canadell JG, Euskirchen E, Field CB, Goryachkin SV, Hagemann S, Kuhry P, Laflour PM, Lee H. Vulnerability of permafrost carbon to climate change: implications for the global carbon cycle. *BioScience* 2008, 58:701–714. doi:10.1641/B580807.
  134. Yvon-Durocher G, Allen AP, Bastviken D, Conrad R, Gudasz C, St-Pierre A, Thanh-Duc N, Del Giorgio PA. Methane fluxes show consistent temperature dependence across microbial to ecosystem scales. *Nature* 2014, 507:488–491. doi:10.1038/nature13164.
  135. Nauta A, Heijmans MM, Blok D, Limpens J, Elberling B, Gallagher A, Li B, Petrov RE, Maximov TC, van Huissteden J. Permafrost collapse after shrub removal shifts tundra ecosystem to a methane source. *Nat Clim Change* 2015, 5:67–70. doi:10.1038/nclimate2446.
  136. Lee H, Schuur EA, Vogel JG, Lavoie M, Bhadra D, Staudhammer CL. A spatially explicit analysis to extrapolate carbon fluxes in upland tundra where permafrost is thawing. *Glob Change Biol* 2011, 17:1379–1393. doi:10.1111/j.1365-2486.2010.02287.x.
  137. Abnizova A, Siemens J, Langer M, Boike J. Small ponds with major impact: the relevance of ponds and lakes in permafrost landscapes to carbon dioxide emissions. *Glob Biogeochem Cycles* 2012, 26:GB2041. doi:10.1029/2011GB004237.
  138. Walter K, Edwards M, Grosse G, Zimov S, Chapin F. Thermokarst lakes as a source of atmospheric CH<sub>4</sub> during the last deglaciation. *Science* 2007, 318:633–636. doi:10.1126/science.1142924.
  139. Packalen MS, Finkelstein SA, McLaughlin JW. Carbon storage and potential methane production in the Hudson Bay Lowlands since mid-Holocene peat initiation. *Nat Commun* 2014, 5:4078. doi:10.1038/ncomms5078.
  140. Anthony KW, Zimov S, Grosse G, Jones MC, Anthony P, Chapin F III, Finlay J, Mack M, Davydov S, Frenzel P. A shift of thermokarst lakes from carbon sources to sinks during the Holocene epoch. *Nature* 2014, 511:452–456. doi:10.1038/nature13560.
  141. Jørgensen CJ, Johansen KML, Westergaard-Nielsen A, Elberling B. Net regional methane sink in High Arctic soils of northeast Greenland. *Nat Geosci* 2015, 8:20–23. doi:10.1038/ngeo2305.
  142. Lupascu M, Welker J, Seibt U, Maseyk K, Xu X, Czimczik C. High Arctic wetting reduces permafrost carbon feedbacks to climate warming. *Nat Clim Change* 2014, 4:51–55. doi:10.1038/nclimate2058.
  143. Mesquita PS, Wrona FJ, Prowse TD. Effects of retrogressive permafrost thaw slumping on sediment chemistry and submerged macrophytes in Arctic tundra lakes. *Freshw Biol* 2010, 55:2347–2358. doi:10.1111/j.1365-2427.2010.02450.x.
  144. Thompson MS, Wrona FJ, Prowse TD. Shifts in plankton, nutrient and light relationships in small tundra lakes caused by localized permafrost thaw. *Arctic* 2012, 65:367–376. doi:10.2307/41758906.
  145. Thienpont JR, Rühland KM, Pisaric MF, Kokelj SV, Kimpe LE, Blais JM, Smol JP. Biological responses to permafrost thaw slumping in Canadian Arctic lakes. *Freshw Biol* 2013, 58:337–353. doi:10.1111/fwb.12061.
  146. Bouchard F, Francus P, Pienitz R, Laurion I. Sedimentology and geochemistry of thermokarst ponds in discontinuous permafrost, subarctic Quebec, Canada. *J Geophys Res: Biogeosci* 2005–2012, 2011:116. doi:10.1029/2011JG001675.
  147. Engstrom DR, Fritz SC, Almendinger JE, Juggins S. Chemical and biological trends during lake evolution in recently deglaciated terrain. *Nature* 2000, 408:161–166. doi:10.1038/35041500.
  148. Norton SA, Perry RH, Saros JE, Jacobson GL Jr, Fernandez IF, Kopáček J, Wilson TA, SanClements MD. The controls on phosphorus availability in a Boreal lake ecosystem since deglaciation. *J Paleolimnol* 2011, 46:107–122. doi:10.1007/s10933-011-9526-9.
  149. Tank SE, Frey KE, Striegl RG, Raymond PA, Holmes RM, McClelland JW, Peterson BJ. Landscape-level controls on dissolved carbon flux from diverse catchments of the circumboreal. *Glob Biogeochem Cycles* 2012, 26:GB0E02. doi:10.1029/2012GB004299.
  150. Anderson NJ, Brodersen KP, Ryves DB, McGowan S, Johanssen LS, Jeppesen E, Leng MJ. Climate versus in-lake processes as controls on the development of community structure in a low-Arctic lake (South-West Greenland). *Ecosystems* 2008, 11:307–324. doi:10.1007/s10021-007-9123-y.
  151. McGowan S, Ryves DB, Anderson NJ. Holocene records of effective precipitation in West Greenland. *Holocene* 2003, 13:239–249. doi:10.1191/0959683603hl610rp.
  152. Anderson NJ, Liversidge A, McGowan S, Jones M. Lake and catchment response to Holocene environmental change: spatial variability along a climate gradient in southwest Greenland. *J Paleolimnol* 2012, 48:209–222. doi:10.1007/s10933-012-9616-3.
  153. Birks HH, Battarbee RW, Birks HJB. The development of the aquatic ecosystem at Kråkenes lake, western Norway, during the late-glacial and early-Holocene – a synthesis. *J Paleolimnol* 2000, 23:91–114. doi:10.1023/A:1008079725596.
  154. Jones VJ, Stevenson AC, Battarbee RW. Acidification of lakes in Galloway, South West Scotland: a diatom and pollen study of the post-glacial history of the

- Round Loch of Glenhead. *J Ecol* 1989, 77:1–23. doi:10.2307/2260912.
155. Michelutti N, Wolfe AP, Briner JP, Miller GH. Climatically controlled chemical and biological development in Arctic lakes. *J Geophys Res: Biogeosci* 2005–2012, 2007:112. doi:10.1029/2006JG000396.
156. Fritz SC, Engstrom DR, Juggins S. Patterns of early lake evolution in boreal landscapes: a comparison of stratigraphic inferences with a modern chronosequence in Glacier Bay, Alaska. *Holocene* 2004, 14:828–840. doi:10.1191/0959683604hl763rp.
157. Fritz SC, Anderson NJ. The relative influences of climate and catchment processes on Holocene lake development in glaciated regions. *J Paleolimnol* 2013, 49:349–362. doi:10.1007/s10933-013-9684-z.
158. Dearing J. Lake sediment records of erosional processes. In: Smith JP, Appleby PG, Battarbee RW, Dearing J, Flower R, Haworth EY, Oldfield F, O'Sullivan P, eds. *Environmental History and Palaeolimnology*. Netherlands: Springer; 1991, 99–106. doi:10.1007/978-94-011-3592-4\_13.
159. Engstrom D, Fritz SC. Coupling between primary terrestrial succession and the trophic development of lakes at Glacier Bay, Alaska. *J Paleolimnol* 2006, 35:873–880. doi:10.1007/s10933-005-5858-7.
160. Law A, Anderson NJ, McGowan S. Spatial and temporal variability of lake ontogeny in south-western Greenland. *Quat Sci Rev* 2015, 126:1–16. doi:10.1016/j.quascirev.2015.08.005.
161. Holmes JA. A late Quaternary ostracod record from Wallywash Great Pond, a Jamaican marl lake. *J Paleolimnol* 1998, 19:115–128. doi:10.1023/A:1007967122665.
162. Bradley RS, Retelle MJ, Ludlam SD, Hardy DR, Zolitschka B, Lamoureux SF, Douglas MSV. The Taconite Inlet Lakes Project: a systems approach to paleoclimatic reconstruction. *J Paleolimnol* 1996, 16:97–110. doi:10.1007/BF00176930.
163. Willén E. Four decades of research on the Swedish large lakes Mälaren, Hjälmaren, Vättern and Vänern: the significance of monitoring and remedial measures for a sustainable society. *AMBIO* 2001, 30:458–466. doi:10.1579/0044-7447-30.8.458.
164. Long AJ, Roberts DH, Wright MR. Isolation basin stratigraphy and Holocene relative sea-level change on Arveprinsen Ejland, Disko Bugt, West Greenland. *J Quat Sci* 1999, 14:323–345. doi:10.1002/(SICI)1099-1417(199907)14:4<323::AID-JQS442>3.0.CO;2-0.
165. Long AJ, Woodroffe SA, Roberts DH, Dawson S. Isolation basins, sea-level changes and the Holocene history of the Greenland Ice Sheet. *Quat Sci Rev* 2011, 30:3748–3768. doi:10.1016/j.quascirev.2011.10.013.
166. Lewis JP, Ryves DB, Rasmussen P, Knudsen KL, Petersen KS, Olsen J, Leng MJ, Kristensen P, McGowan S, Philippsen B. Environmental change in the Limfjord, Denmark (ca 7500–1500 cal yrs BP): a multiproxy study. *Quat Sci Rev* 2013, 78:126–140. doi:10.1016/j.quascirev.2013.05.020.
167. Available at: <http://www.internationalrivers.org/questions-and-answers-about-large-dams>. (Accessed November 6, 2015).
168. Barros N, Cole JJ, Tranvik LJ, Prairie YT, Bastviken D, Huszar VL, Del Giorgio P, Roland F. Carbon emission from hydroelectric reservoirs linked to reservoir age and latitude. *Nat Geosci* 2011, 4:593–596. doi:10.1038/ngeo1211.
169. Syvitski JP, Vörösmarty CJ, Kettner AJ, Green P. Impact of humans on the flux of terrestrial sediment to the global coastal ocean. *Science* 2005, 308:376–380. doi:10.1126/science.1109454.
170. Fearnside PM. Do hydroelectric dams mitigate global warming? The case of Brazil's Curuá-Una Dam. *Mitig Adapt Strat Glob Chang* 2005, 10:675–691. doi:10.1007/s11027-005-7303-7.
171. Maeck A, DelSontro T, McGinnis DF, Fischer H, Flury S, Schmidt M, Fietzek P, Lorke A. Sediment trapping by dams creates methane emission hot spots. *Environ Sci Technol* 2013, 47:8130–8137. doi:10.1021/es4003907.
172. Hall RI, Leavitt PR, Dixit AS, Quinlan R, Smol JP. Limnological succession in reservoirs: a palaeolimnological comparison of two methods of reservoir formation. *Can J Fish Aquat Sci* 1999, 56:1109–1121. doi:10.1139/f99-047.
173. Tibby J, Gell P, Hancock G, Clark M. Complex reservoir sedimentation revealed by an unusual combination of sediment records, Kangaroo Creek Reservoir, South Australia. *J Paleolimnol* 2010, 43:535–549. doi:10.1007/s10933-009-9349-0.
174. Teodoru CR, Del Giorgio PA, Prairie YT, St-Pierre A. Depositional fluxes and sources of particulate carbon and nitrogen in natural lakes and a young boreal reservoir in Northern Québec. *Biogeochemistry* 2013, 113:323–339. doi:10.1007/s10533-012-9760-x.
175. Marce R, Obrador B, Morgui J-A, Lluís Riera J, Lopez P, Armengol J. Carbonate weathering as a driver of CO<sub>2</sub> supersaturation in lakes. *Nat Geosci* 2015, 8:107–111. doi:10.1038/ngeo2341.
176. Webster KE, Soranno PA, Maines SB, Kratz TK, Bowser CJ, Dillon PJ, Campbell P, Fee EJ, Hecky RE. Structuring features of lake districts: landscape controls on lake chemical responses to drought. *Freshw Biol* 2000, 43:499–515. doi:10.1046/j.1365-2427.2000.00571.x.
177. Hodell DA, Brenner M, Curtis JH. Terminal Classic drought in the northern Maya lowlands inferred from multiple sediment cores in Lake Chichancanab (Mexico). *Quat Sci Rev* 2005, 24:1413–1427. doi:10.1016/j.quascirev.2004.10.013.
178. Schultze-Lam S, Beveridge TJ, Des Marais DJ. Whiting events: biogenic origin due to the

- photosynthetic activity of cyanobacterial picoplankton. *Limnol Oceanogr* 1997, 42:133–141. doi:10.4319/lo.1997.42.1.0133.
179. Hodell DA, Schelske CL, Fahnenstiel GL, Robbins LL. Biologically induced calcite and its isotopic composition in Lake Ontario. *Limnol Oceanogr* 1998, 43:187–199. doi:10.4319/lo.1998.43.2.0187.
  180. Wiik E, Bennion H, Sayer CD, Willby NJ. Chemical and biological responses of marl lakes to eutrophication. *Freshw Rev* 2013, 6:35–62. doi:10.1608/FRJ-6.2.630.
  181. Pukacz A, Pelechaty M, Frankowski M. Carbon dynamics in a hardwater lake: effect of charophyte biomass on carbonate deposition. *Pol J Ecol* 2014, 62:695–705.
  182. Gorham E, Dean WE, Sanger JE. The chemical composition of lakes in the north-central United States. *Limnol Oceanogr* 1983, 28:287–301. doi:10.4319/lo.1983.28.2.0287.
  183. Barkan E, Luz B, Lazar B. Dynamics of the carbon dioxide system in the Dead Sea. *Geochim Cosmochim Acta* 2001, 65:355–368. doi:10.1016/S0016-7037(00)00540-8.
  184. Anderson NJ, Harriman R, Ryves DB, Patrick ST. Dominant factors controlling variability in the ionic composition of West Greenland lakes. *Arct Antarct Alp Res* 2001, 33:418–425. doi:10.2307/1552551.
  185. Duarte CM, Prairie YT, Montes C, Cole JJ, Striegl R, Melack J, Downing JA. CO<sub>2</sub> emissions from saline lakes: a global estimate of a surprisingly large flux. *J Geophys Res: Biogeosci* 2008, 113:G04041. doi:10.1029/2007JG000637.
  186. Wanninkhof R, Knox M. Chemical enhancement of CO<sub>2</sub> exchange in natural waters. *Limnol Oceanogr* 1996, 41:689–697. doi:10.4319/lo.1996.41.4.0689.
  187. Last WM, Vance RE. The Holocene history of Oro Lake, one of the western Canada's longest continuous lacustrine records. *Sediment Geol* 2002, 148:161–184. doi:10.1016/S0037-0738(01)00216-0.
  188. Verschuren D. Reconstructing fluctuations of a shallow East African lake during the past 1800 yrs from sediment stratigraphy in a submerged crater basin. *J Paleolimnol* 2001, 25:297–311. doi:10.1023/A:1011150300252.
  189. Valero-Garcés BL, Laird KR, Fritz SC, Kelts K, Ito E, Grimm EC. Holocene climate in the Northern Great Plains inferred from sediment stratigraphy, stable isotopes, carbonate geochemistry, diatoms, and pollen at Moon Lake, North Dakota. *Quat Res* 1997, 48:359–369. doi:10.1006/qres.1997.1930.
  190. Dean WE. The carbon cycle and biogeochemical dynamics in lake sediments. *J Paleolimnol* 1999, 21:375–393. doi:10.1023/A:1008066118210.
  191. Evans M, Quine T, Kuhn N. Geomorphology and terrestrial carbon cycling. *Earth Surf Process Landf* 2013, 38:103–105. doi:10.1002/esp.3337.
  192. Dearing JA, Jones RT. Coupling temporal and spatial dimensions of global sediment flux through lake and marine sediment records. *Glob Planet Change* 2003, 39:147–168. doi:10.1016/S0921-8181(03)00022-5.
  193. Foster ID, Chapman A, Hodgkinson R, Jones A, Lees J, Turner S, Scott M. Changing suspended sediment and particulate phosphorus loads and pathways in underdrained lowland agricultural catchments; Herefordshire and Worcestershire, UK. In: Kronvang B, ed. *The Interactions between Sediments and Water*. Netherlands: Springer; 2003, 119–126. doi:10.1007/978-94-017-3366-3\_17.
  194. Enters D, Lücke A, Zolitschka B. Effects of land-use change on deposition and composition of organic matter in Frickenhauser See, northern Bavaria, Germany. *Sci Total Environ* 2006, 369:178–187. doi:10.1016/j.scitotenv.2006.05.020.
  195. Cunningham L, Bishop K, Mettävainio E, Rosén P. Paleocological evidence of major declines in total organic carbon concentrations since the nineteenth century in four nemoboreal lakes. *J Paleolimnol* 2011, 45:507–518. doi:10.1007/s10933-010-9420-x.
  196. Meyer-Jacob C, Tolu J, Bigler C, Yang H, Bindler R. Early land use and centennial scale changes in lake-water organic carbon prior to contemporary monitoring. *Proc Natl Acad Sci USA* 2015, 112:6579–6584. doi:10.1073/pnas.1501505112.
  197. Moorhouse HL, McGowan S, Jones MD, Barker P, Leavitt PR, Brayshaw SA, Haworth EY. Contrasting effects of nutrients and climate on algal communities in two lakes in the Windermere catchment since the late 19th century. *Freshw Biol* 2014, 59:2605–2620. doi:10.1111/fwb.12457.
  198. Battarbee RW. Observations on the recent history of Lough Neagh and its drainage basin. *Philos Trans R Soc Lond B Biol Sci* 1978, 281:303–345. doi:10.1098/rstb.1978.0001.
  199. Leavitt PR, Vinebrooke RD, Hall RI, Wilson SE, Smol JP, Vance RE, Last WM. Multiproxy record of prairie lake response to climatic change and human activity: Clearwater Lake, Saskatchewan. *Bull Geol Surv Canada* 1999, 534:125–138.
  200. McGowan S, Barker P, Haworth EY, Leavitt PR, Maberly SC, Pates J. Humans and climate as drivers of algal community change in Windermere since 1850. *Freshw Biol* 2012, 57:260–277. doi:10.1111/j.1365-2427.2011.02689.x.
  201. Kim B, Choi K, Kim C, Lee U-H, Kim Y-H. Effects of the summer monsoon on the distribution and loading of organic carbon in a deep reservoir, Lake Soyang, Korea. *Water Res* 2000, 34:3495–3504. doi:10.1016/S0043-1354(00)00104-4.



202. Fritz SC. Lake development and limnological response to prehistoric and historic land-use in Diss, Norfolk, U.K. *J Ecol* 1989, 77:182–202. doi:10.2307/2260924.
203. Scully NM, Leavitt PR, Carpenter SR. Century-long effects of forest harvest on the physical structure and autotrophic community of a small temperate lake. *Can J Fish Aquat Sci* 2000, 57:50–59. doi:10.1139/f00-115.
204. Ekdahl E, Teranes JL, Guilderson TP, Turton CL, McAndrews JH, Wittkop CA, Stoermer EF. Prehistorical record of cultural eutrophication from Crawford Lake, Canada. *Geology* 2004, 32:745–748. doi:10.1130/G20496.1.
205. Heathcote AJ, Downing JA. Impacts of eutrophication on carbon burial in freshwater lakes in an intensively agricultural landscape. *Ecosystems* 2012, 15:60–70. doi:10.1007/s10021-011-9488-9.
206. Lewis SL, Maslin MA. Defining the anthropocene. *Nature* 2015, 519:171–180. doi:10.1038/nature14258.
207. Edmondson WT. Lake Washington. In: O'Sullivan PE, Reynolds CS, O'Sullivan PE, Bugenyi FWB, Butorina L, Cowan GI, eds. *The Lakes Handbook: Lake Restoration and Rehabilitation*. Oxford: Blackwell; 2005.
208. Jeppesen E, Jensen JP, Søndergaard M, Lauridsen T, Landkildehus FY. Trophic structure, species richness and biodiversity in Danish lakes: changes along a phosphorus gradient. *Freshw Biol* 2000, 45:201–218. doi:10.1046/j.1365-2427.2000.00675.x.
209. Cole JJ, Pace ML, Carpenter SR, Kitchell JF. Persistence of net heterotrophy in lakes during nutrient addition and food web manipulations. *Limnol Oceanogr* 2000, 45:1718–1730. doi:10.4319/lo.2000.45.8.1718.
210. Hollander DJ, Smith MA. Microbially mediated carbon cycling as a control on the  $\delta^{13}\text{C}$  of sedimentary carbon in eutrophic Lake Mendota (USA): new models for interpreting isotopic excursions in the sedimentary record. *Geochim Cosmochim Acta* 2001, 65:4321–4337. doi:10.1016/S0016-7037(00)00506-8.
211. Deines P, Grey J. Site-specific methane production and subsequent methane mediation within Esthwaite Water, UK. *Arch Hydrobiol* 2006, 167:317–334. doi:10.1127/0003-9136/2006/0167-0317.
212. Vadeboncoeur Y, Jeppesen E, Vander Zanden MJ, Schierup HH, Christoffersen K, Lodge DM. From Greenland to green lakes: cultural eutrophication and the loss of benthic pathways in lakes. *Limnol Oceanogr* 2003, 48:1408–1418. doi:10.4319/lo.2003.48.4.1408.
213. McGowan S, Leavitt PR, Hall RI. A whole-lake experiment to determine the effects of winter droughts on shallow lakes. *Ecosystems* 2005, 8:694–708. doi:10.1007/s10021-003-0152-x.
214. Schelske CL, Hodell DA. Using carbon isotopes of bulk sedimentary organic matter to reconstruct the history of nutrient loading and eutrophication in Lake Erie. *Limnol Oceanogr* 1995, 40:918–929. doi:10.4319/lo.1995.40.5.0918.
215. Holtgrieve GW, Schindler DE, Hobbs WO, Leavitt PR, Ward EJ, Bunting L, Chen G, Finney BP, Gregory-Eaves I, Holmgren S. A coherent signature of anthropogenic nitrogen deposition to remote watersheds of the northern hemisphere. *Science* 2011, 334:1545–1548. doi:10.1126/science.1212267.
216. Turner SD, Rose NL. *Dataset: Nitrogen and Carbon Isotope Data from 210Pb Dated Lake Sediment Cores in the United Kingdom*. NERC: UK; 2015. doi:10.5285/4b53b1d7-f290-4b47-97e9-9f9ec79f3003.
217. Schindler DW, Bayley S. The biosphere as an increasing sink for atmospheric carbon: estimates from increased nitrogen deposition. *Global Biogeochem Cycles* 1993, 7:717–733. doi:10.1029/93GB02562.
218. Wolfe AP, Baron JS, Cornett RJ. Anthropogenic nitrogen deposition induces rapid ecological changes in alpine lakes of the Colorado front range (USA). *J Paleolimnol* 2001, 25:1–7. doi:10.1023/A:1008129509322.
219. Hu Z, Anderson NJ, Yang X, McGowan S. Catchment-mediated atmospheric nitrogen deposition drives ecological change in two alpine lakes in SE Tibet. *Glob Change Biol* 2014, 20:1614–1628. doi:10.1111/gcb.12435.
220. Schöpp W, Posch M, Mylona S, Johansson M. Long-term development of acid deposition (1880–2030) in sensitive freshwater regions in Europe. *Hydrol Earth Syst Sci Discuss* 2003, 7:436–446. doi:10.5194/hess-7-436-2003v.
221. Jones V, Kreiser A, Appleby P, Brodin Y-W, Dayton J, Natkanski J, Richardson N, Rippey B, Sandoy S, Battarbee R. The recent palaeolimnology of two sites with contrasting acid-deposition histories. *Philos Trans R Soc Lond B Biol Sci* 1990, 327:397–402. doi:10.1098/rstb.1990.0081.
222. Schindler DW, Curtis PJ, Parker BR, Stainton MP. Consequences of climate warming and lake acidification for UV-B penetration in North American boreal lakes. *Nature* 1996, 379:705–708. doi:10.1038/379705a0.
223. Findlay DL, Kasian SEM, Turner MT, Stainton MP. Responses of phytoplankton and epilithon during acidification and early recovery of a lake. *Freshw Biol* 1999, 42:159–175. doi:10.1046/j.1365-2427.1999.00458.x.
224. Frost TM, Fischer JM, Klug JL, Arnott SE, Montz PK. Trajectories of zooplankton recovery in the Little Rock Lake whole-lake acidification



- experiment. *Ecol Appl* 2006, 16:353–367. doi:10.1890/04-1800.
225. Vinebrooke RD, Dixit SS, Graham MD, Gunn JM, Chen YW, Belzile N. Whole-lake algal responses to a century of acidic industrial deposition on the Canadian Shield. *Can J Fish Aquat Sci* 2002, 59:483–493. doi:10.1139/f02-025.
226. Leavitt PR, Findlay DL, Hall RI, Smol JP. Algal responses to dissolved organic carbon loss and pH decline during whole-lake acidification: evidence from paleolimnology. *Limnol Oceanogr* 1999, 44:757–773. doi:10.4319/lo.1999.44.3\_part\_2.0757.
227. Jeziorski A, Tanentzap AJ, Yan ND, Paterson AM, Palmer ME, Korosi JB, Rusak JA, Arts MT, Keller WB, Ingram R. The jellification of north temperate lakes. *Proc R Soc Lond B Biol Sci* 2015, 282:20142449. doi:10.1098/rspb.2014.2449.
228. Monteith DT, Stoddard JL, Evans CD, de Wit HA, Forsius M, Høgåsen T, Wilander A, Skjelkvale BL, Jeffries DS, Vuorenmaa J, et al. Dissolved organic carbon trends resulting from changes in atmospheric deposition chemistry. *Nature* 2007, 450:537–541. doi:10.1038/nature06316.
229. Solomon CT, Jones SE, Weidel BC, Buffam I, Fork ML, Karlsson J, Larsen S, Lennon JT, Read JS, Sadro S. Ecosystem consequences of changing inputs of terrestrial dissolved organic matter to lakes: current knowledge and future challenges. *Ecosystems* 2015, 18:376–389. doi:10.1007/s10021-015-9848-y.
230. Curtis CJ, Battarbee RW, Monteith DT, Shilland EM. The future of upland water ecosystems of the UK in the 21st century: a synthesis. *Ecol Indic* 2014, 37:412–430. doi:10.1016/j.ecolind.2013.10.012.