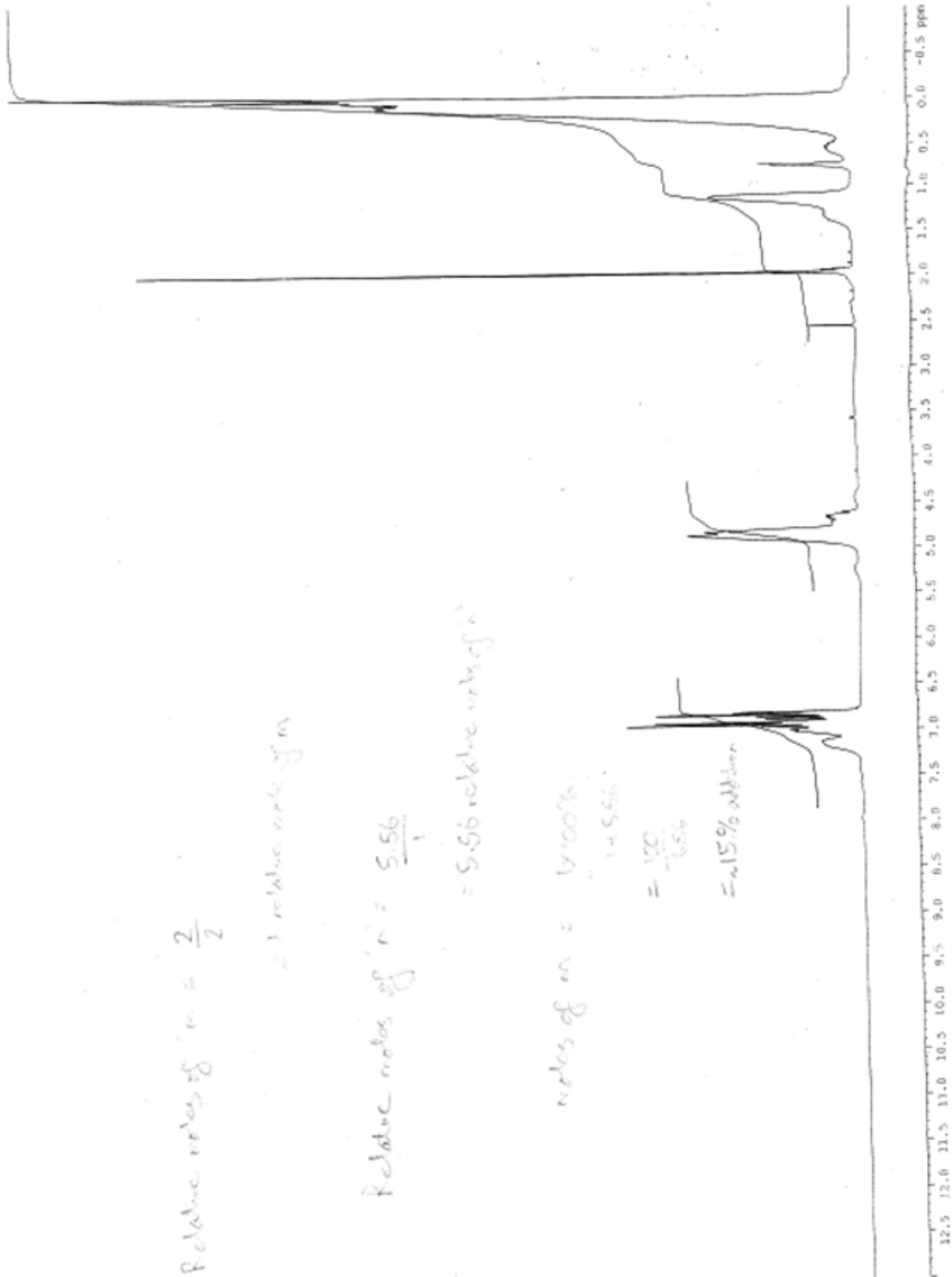


DJW.6625.20.poly(methyloctyl)siloxane (8). <sup>1</sup>H NMR 15percent conversion.ja2313djw2.010.esp



Current Data Parameters  
 NAME: J02313DJW2  
 EXPNO: 10  
 PROCNO: 1

F2 - Acquisition Parameters  
 Date\_ 20130123  
 Time\_ 17.10  
 INSTRUM: spect  
 PROBRD: 5 mm QNP 1H/13  
 PULPROG: zgpg30  
 TD: 32768  
 SOLVENT: Tol  
 NS: 64  
 DS: 4  
 SWH: 5995.204 Hz  
 FIDRES: 0.182559 Hz  
 AQ: 2.7329031 sec  
 RG: 96.5  
 CW: 83.400 uWHz  
 DE: 6.00 uWHz  
 TE: 298.2 K  
 O1: 1.0000000 sec  
 PCREST: 0.0000000 sec  
 POWER: 0.0150000 sec

\*\*\*\*\* CHANNEL f1 \*\*\*\*\*  
 NUCL1: 1H  
 P1: 12.10 uSec  
 PL1: 3.00 dB  
 SFO1: 300.1315006 MHz

F2 - Processing parameters  
 SI: 16384  
 SF: 300.1300553 MHz  
 EQ: 0  
 LB: 0.30 Hz  
 GB: 0  
 PC: 1.00  
 SR: 55.29 MHz

DJW.6625.20.poly(methyloctyl)siloxane (8).<sup>13</sup>C NMR  
 15 percent conversion.ja2313djw2.011.esp



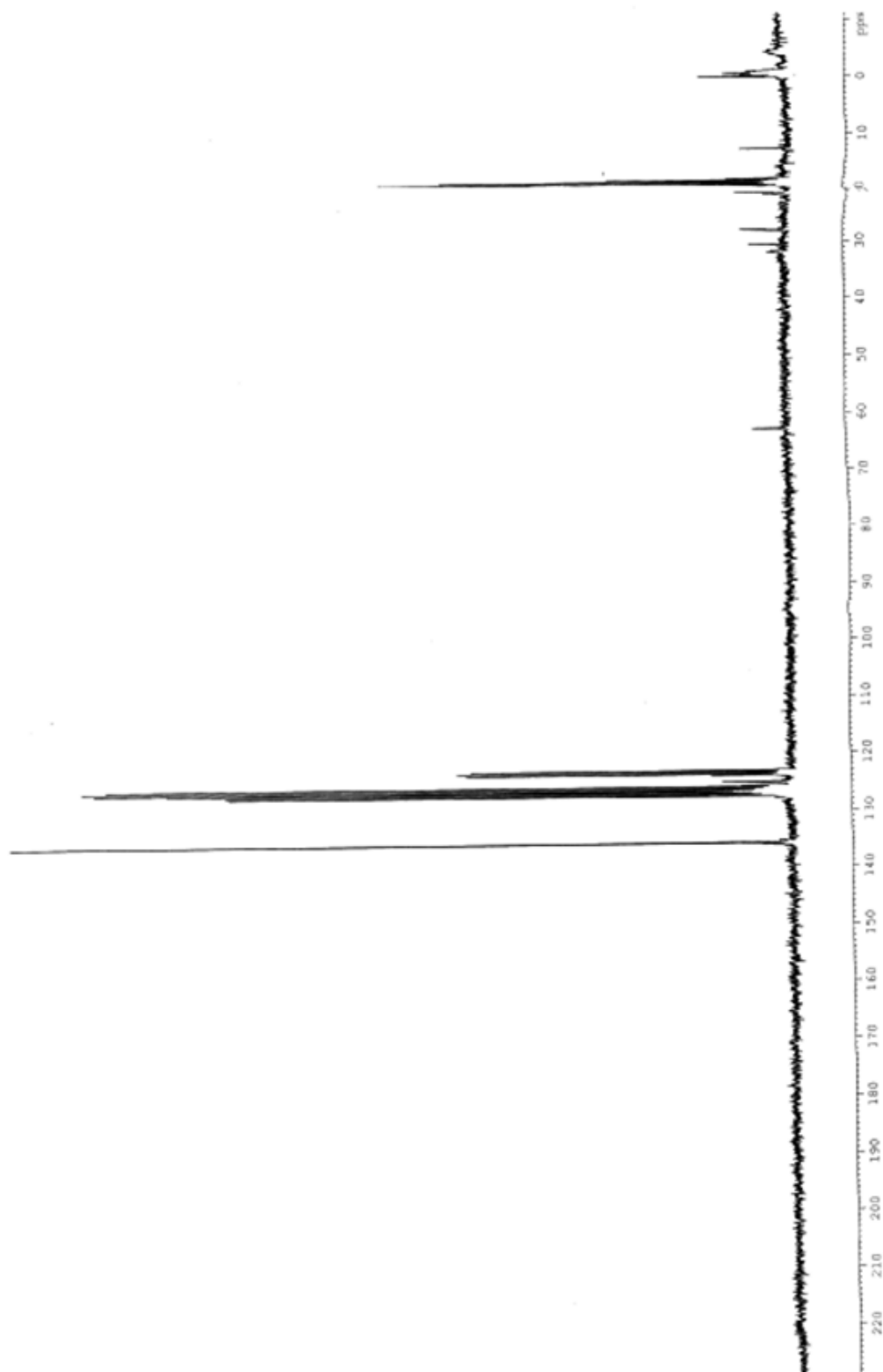
Current Data Parameters  
 NAME ja2313djw2  
 EXPNO 11  
 PROCNO 1

F2 - Acquisition Parameters  
 Date\_ 20130123  
 Time 17:28  
 INSTRUM spect  
 PULPROG zgpg30  
 SOLVENT Tol  
 NS 512  
 DS 4  
 SWH 18115.841 Hz  
 FWHM 0.552855 Hz  
 AQ 0.3084468 sec  
 RG 4597.6  
 DM 27.600 usec  
 DE 6.00 usec  
 TE 298.2 K  
 D1 1.00000000 sec  
 d11 0.05000000 sec  
 DELTA 0.05000000 sec  
 ACQFT 0.00500000 sec  
 MCHWZ 0.01500000 sec

===== CHANNEL f1 =====  
 NUC1 <sup>13</sup>C  
 P1 7.30 usec  
 PL1 0.00 dB  
 SFO1 75.4760505 MHz

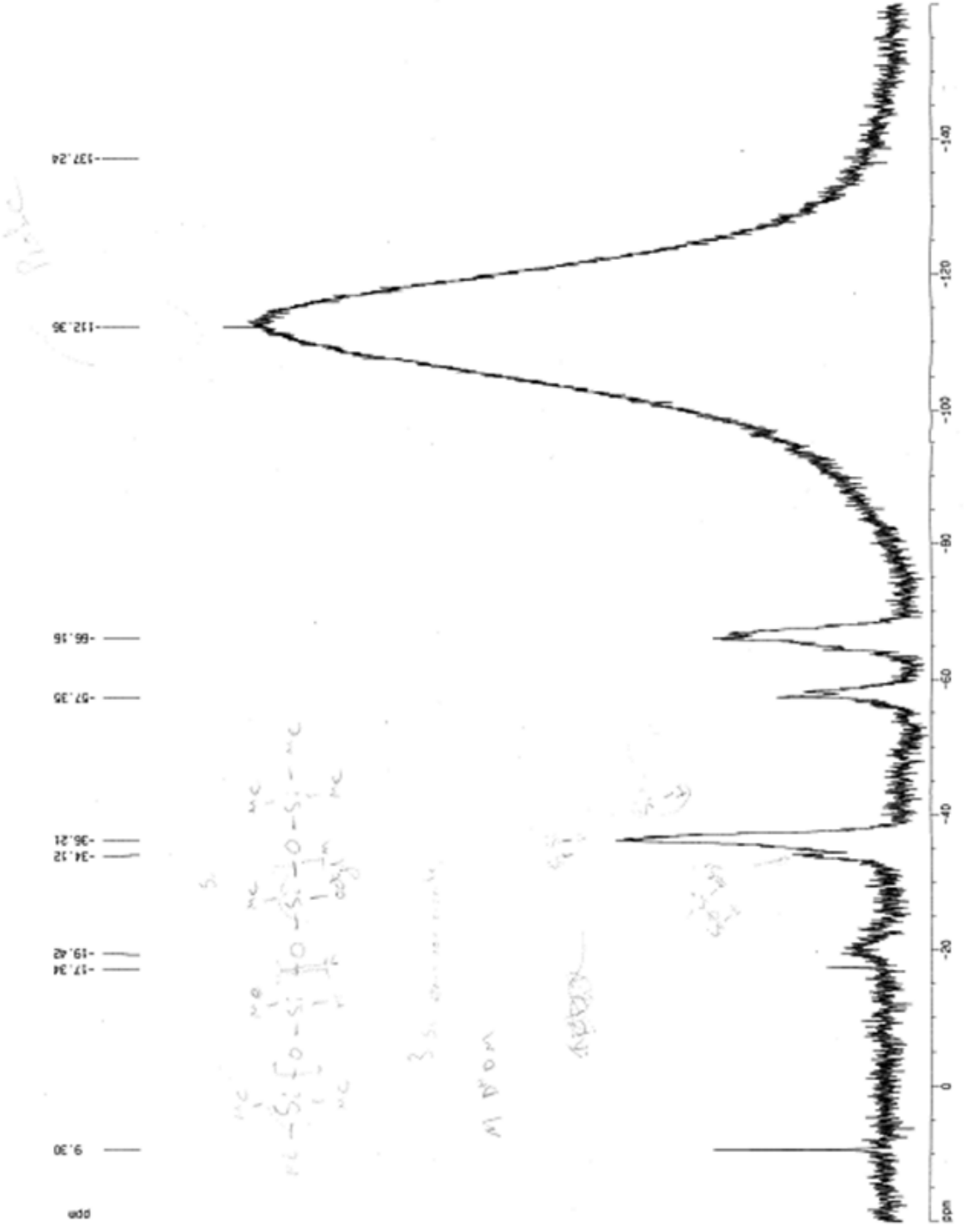
===== CHANNEL f2 =====  
 C1P2P2 waltz16  
 NUC2 <sup>13</sup>C  
 P2 80.00 usec  
 PL2 3.00 dB  
 PL12 20.00 dB  
 PL13 20.00 dB  
 SFO2 300.1315007 MHz

F2 - Processing parameters  
 SI 32768  
 SF 75.4678476 MHz  
 KW 6M  
 SSB 0  
 LB 2.00 Hz  
 GB 0  
 FC 1.40  
 SR 98.60 MHz



# DJW.6625.20.poly(methyloctyl)siloxane (8).<sup>29</sup>Si NMR.ma0113njwdjw1.001.esp

DJW/6625/20 (polymethyloctyl)siloxane) <sup>29</sup>Si NMR (referenced to TMS in D2O): D2O external lock (spacer)



Current Data Parameters  
 NAME #40113njwdjw1  
 EXPNO 3  
 PROCNO 3  
 F2 - Acquisition Parameters  
 Date\_ 20130301  
 Time 10.44  
 INSTRUM 60x400  
 PROBHD 10 mm BBO BB-  
 PULPROG zgpg30  
 TD 65536  
 SOLVENT D2O  
 NS 1821  
 DS 2  
 SWH 23609.523 Hz  
 FIDRES 0.363304 Hz  
 AQ 1.3703661 sec  
 RG 114  
 DM 21.000 usec  
 DE 6.00 usec  
 TE 300.0 K  
 D1 5.00000000 sec  
 D11 0.03000000 sec  
 \*\*\*\*\* CHANNEL f1 \*\*\*\*\*  
 NUC1 29Si  
 P1 15.00 usec  
 PL1 -4.00 dB  
 SFO1 79.496262 MHz  
 \*\*\*\*\* CHANNEL f2 \*\*\*\*\*  
 CPDPRG2 waltz16  
 NUC2 1H  
 P2 140.00 usec  
 PL2 120.00 dB  
 PL12 13.00 dB  
 SFO2 400.1320007 MHz  
 F2 - Processing parameters  
 SI 32768  
 SF 79.496005 MHz  
 MDW EM  
 SSB 0  
 LB 3.00 Hz  
 GB 0  
 PC 1.40  
 SR 45.00 Hz  
 ID NMR plot parameters  
 CX 30.00 cm  
 F1P 20.000 ppm  
 F1 1569.69 Hz  
 F2P -160.000 ppm  
 F2 -12719.14 Hz  
 PPMCK 6.00000 ppm/cm  
 HQCK 475.95759 Hz/cm

DJW.6625.20.poly(methyloctyl)siloxane (8).FT-IR 15percent conversion

