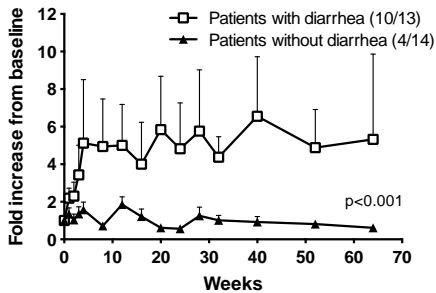
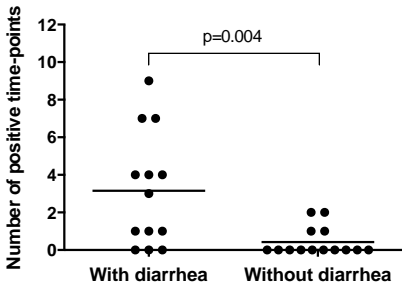


Figure 4

A



C



B

		Patients with diarrhea														Responses/ patient			
		Week	0	1	2	3	4	8	12	16	20	24	28	32	40	52	64		
Arm-I	101																	4	
	103																	0	
	106																	4	
	107																	0	
	113																	1	
Arm-II	115																	9	
	201																	7	
	202																	1	
	205																	3	
	210																	4	
	212																	1	
	213																	7	
	214																	0	
	Responses/ week		0	2	4	4	2	3	4	2	4	4	4	4	5	1	2	0	Total 41
			Patients without diarrhea														Responses/ patient		
		Week	0	1	2	3	4	8	12	16	20	24	28	32	40	52	64		
Arm-I	102																	0	
	104																	0	
	105																	0	
	108																	0	
	109																	1	
	110																	0	
	111																	0	
Arm-II	112																	1	
	114																	0	
	203																	2	
	206																	0	
	207																	2	
Responses/ week		0	0	0	1	1	0	2	1	0	0	0	1	0	0	0	0	Total 6	