

Supplement of Biogeosciences, 13, 4843–4861, 2016
<http://www.biogeosciences.net/13/4843/2016/>
doi:10.5194/bg-13-4843-2016-supplement
© Author(s) 2016. CC Attribution 3.0 License.



Supplement of

Coccolithophore responses to environmental variability in the South China Sea: species composition and calcite content

Xiaobo Jin et al.

Correspondence to: Chuanlian Liu (liucl@tongji.edu.cn)

The copyright of individual parts of the supplement might differ from the CC-BY 3.0 licence.

Figure S1: The maps of sea level and geostrophic velocities anomalies at the sampling dates of individual station in the South China Sea.

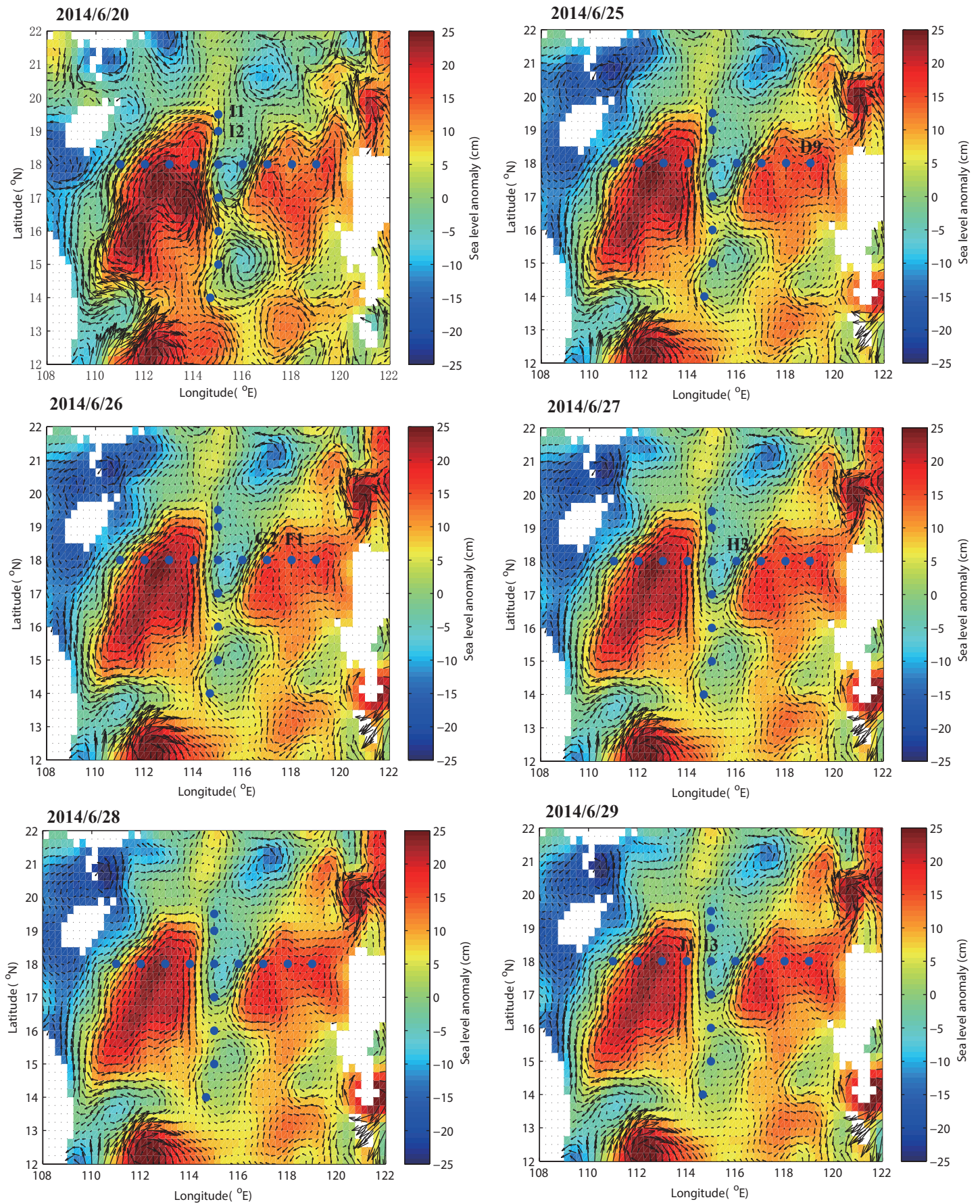


Figure S1 (continued): The maps of sea level and geostrophic velocities anomalies at the sampling dates of individual station in the South China Sea.

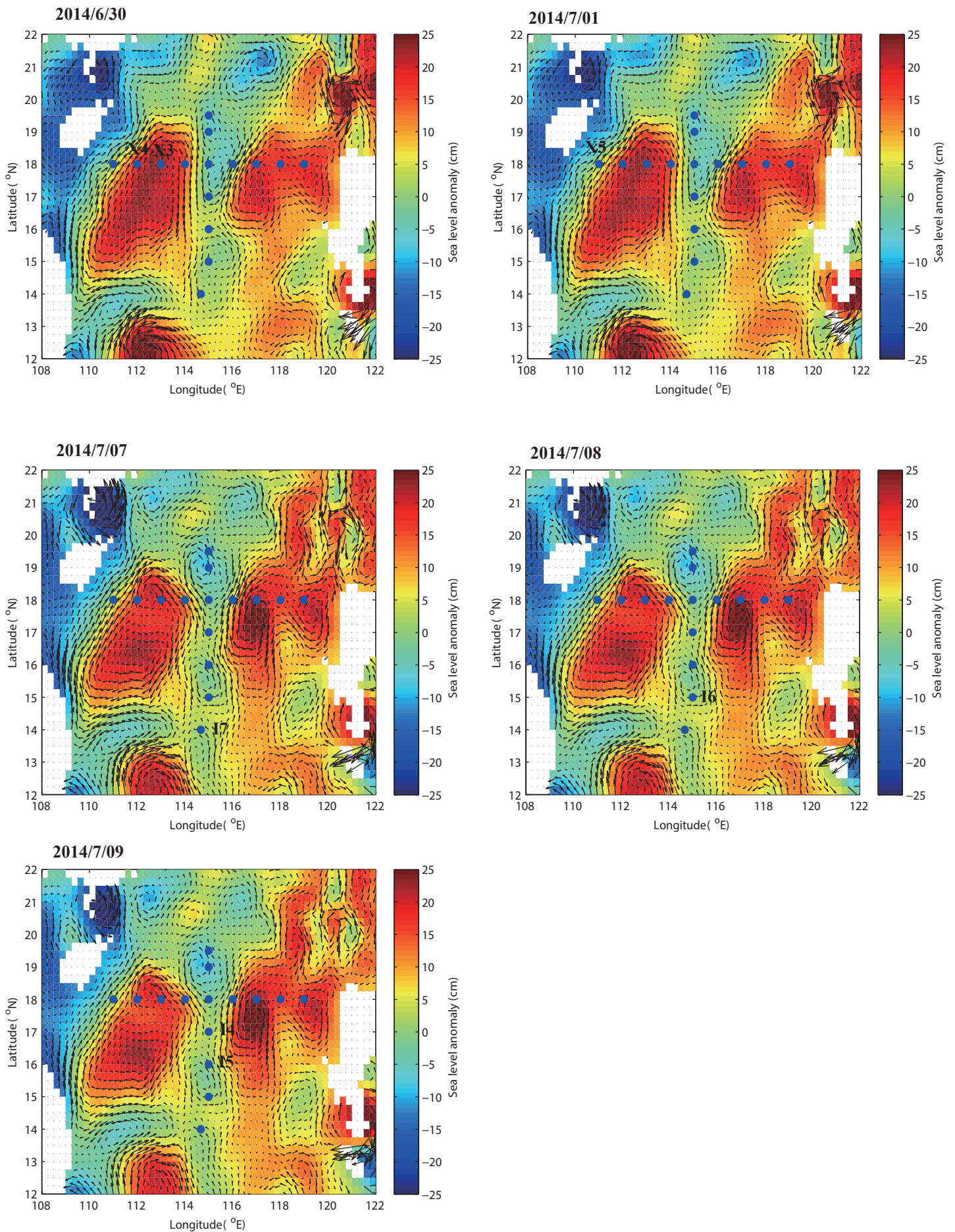


Figure S2: Hierarchical cluster analysis based on the Bray-Curtis similarity resemblance constructed from square root transformed absolute coccolithophore abundance. Samples (station label+depth) were divided into three groups (group 1 (a), group 2 (b), group 3 (c)) at 40 similarity with group average linkage.

