

# Identifying key influences for planning acceptance of onshore wind turbines

*Michael Harper, Ben Anderson, Patrick James, AbuBakr Bahaj*

Paper presented in "Proceedings of ECOS 2017 - The 30th International Conference on Efficiency, Cost, Optimization, Simulation and Environmental Impact of Energy Systems, July 2 - July 6 2017, San Diego, California, USA"

This version presents the final draft and is available through EPrints: <https://eprints.soton.ac.uk/408181/>

## Abstract

There is a global drive to develop renewable energy power generation to reduce environmental impacts and enhance energy security especially through indigenous resources. Wind energy conversion both on and offshore is one of the most effective technologies to provide sustainable power. In the deployments of such technologies, geographical information systems are extensively used to identify suitable sites for the installation of wind turbines. However, there are concerns that such approaches fail to model site suitability accurately, and in particular fail to account for the difficulties faced in gaining planning permission. This study has explored whether the planning success of proposed wind turbine projects can be predicted using a range of geospatial parameters based on Great Britain as a case study. Logistic regression is used to assess the relationship between appropriate variables and planning outcome. The results indicate that the size of the project, percentage of the local population with high levels of qualifications, the average age, and local political composition emerge as key influences affecting planning approval. To the authors' knowledge, this is the first study which has quantitatively linked regional social and political data to the planning outcome of wind turbines. These findings can help reduce the level of planning issues encountered for proposed wind turbine, improving the accuracy of GIS modelling of wind turbines.

## Keywords

Onshore Wind, Logistic Regression, Planning, Demographics, Great Britain, GIS

## 1 Introduction

Increased environmental concern and issues surrounding security of supply have led to a global drive to develop renewable energy systems. In the European Union, over \$40 billion is invested annually in renewable energy technologies (mostly wind and solar) and it is expected to increase by a further 50% by 2020 (UNEP 2016).

Onshore wind power generation is now competitive with fossil energy in many countries and is one of the most mature renewable energy technologies available. However, there are major technical challenges in identifying suitable sites for wind turbine farms. Projects often face strong local opposition, as can be seen from the low acceptance rates of wind turbines in Great Britain, with over 50% of onshore projects rejected (DECC 2016).

A large number of geospatial models have been produced to determine site suitability for wind farms (Atici et al. 2015, Aydin, Kentel, and Duzgun (2010), Baban and Parry (2001), Gass et al. (2013), Van Haaren and Fthenakis (2011), Hansen (2005), Janke (2010), Lee, Chen, and Kang (2009), Miller and Li (2014), Neufville (2013), Noorollahi, Yousefi, and Mohammadi (2015), Sliz-Szkliniarz and Vogt (2011), SQW Energy (2010), Voivontas et al. (1998), Q. Wang, M'Ikiugu, and Kinoshita (2014), Watson and Hudson (2015), Yue and Wang (2006)), but such models are highly sensitive to the underlying modelling assumptions, and there has been limited validation of these models against actual developments patterns. A few studies have aimed to rigorously quantify key influences on historical planning outcomes (Haggett and Toke 2006, Horst and Toke (2010), Rensburg, Kelley, and Jeserich (2015), Toke, Breukers, and Wolsink (2008)), but such analysis has yet to be integrated within a full geospatial model.

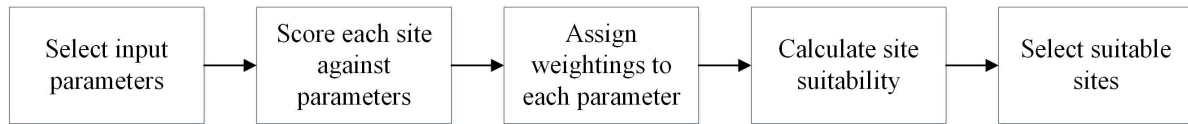


Figure 1: Typical stages of geospatial models for assessing wind turbine site suitability

The overall objective of the programme of work to which this paper contributes is to build an overarching model integrating resource availability and likely acceptability of onshore wind turbine projects. This paper presents the first stage of this analysis, assessing which parameters influence wind turbine planning outcomes utilising a range of physical, geographical, demographic and political parameters. In doing so, it responds to calls to merge qualitative and quantitative analysis of wind projects to gain a greater understanding of project approval (Langer et al. 2016).

The work presented here has four parts: a review of existing literature relevant to onshore wind modelling; collection and processing of appropriate data sources used within the analysis; research methodology and results and finally discussion of the theoretical and practical implications of the research and further research opportunities.

## 2 Background

Geographic Information Systems (GIS) are tools designed to capture, store, manipulate, analyse, manage, and present spatial or geographic data (Malczewski 2004). They are used extensively to assist in locating wind farms, and combine a range of geospatial information into the decision-making of wind energy development (Resch et al. 2014). Early work by Voivontas et al. (Voivontas et al. 1998) and Baban and Parry (Baban and Parry 2001) provide examples of such analysis, and established the structure for an international range of studies which have largely followed the approach outlined in Figure 1

Similar parameters are used throughout the studies, and ideal sites are typically identified as having high average wind speeds; not being close to urban areas; not in protected landscapes (e.g. National Parks); not close to airports (to minimise radar interference); close to roads for access and finally close to power lines for grid connection. However the weights for each parameter in subsequent predictive models have traditionally been determined using surveys and questionnaires (Baban and Parry 2001, Aydin, Kentel, and Duzgun (2010), Neufville (2013), Atici et al. (2015)) or previous literature (Gass et al. 2013, Q. Wang, M'ikiugu, and Kinoshita (2014), Watson and Hudson (2015)). To the authors' knowledge, there have been no attempts to statistically validate the relative importance of parameters used and it is therefore unclear whether the parameters currently used are actually appropriate for site approval rates. In a significant contribution, this paper derives these weights using a statistically rigorous methodology and then tests their ability to correctly predict planning outcomes.

In addition, there is increased awareness of the wider social challenges surrounding the development since geographical variables in themselves are insufficient to explain patterns of implementation of wind power (Toke, Breukers, and Wolsink 2008, Devine-Wright (2005)). Recent studies have explored how planning decisions were influenced by key actors (e.g. local communities, planning authorities, project developers) (Toke, Breukers, and Wolsink 2008, Haggett and Toke (2006)) and local characteristics (Horst and Toke 2010). In particular, a study by Van Rensburg et al. (Rensburg, Kelley, and Jeserich 2015) explored wind farms project planning approval against a range of technological and institutional process variables. The results suggested a number of variables appeared significant for planning including the proximity to Natura 2000 sites (an EU protected habitat designation); sites with high bird sensitivity; hub height and project installed capacity. In addition, the study noted that proximity of the nearest dwellings and wind speeds appeared insignificant, a finding which counters the views reported within many previous studies. Other work has investigated the social factors that may influence planning decisions (Langer et al. 2016, Álvarez-Farizo and Hanley (2002), P. A. Groothuis, Groothuis, and Whitehead (2008), Krueger, Parsons, and Firestone (2011), Jones and Richard Eiser (2010)). For example, studies within Great Britain suggest that support for wind developments decreases as both income and age increase [31], and people with higher levels of qualifications are less likely to support projects (Krueger, Parsons, and Firestone 2011). However, whilst these potential social factors have been identified, there have been no attempts to include these parameters within

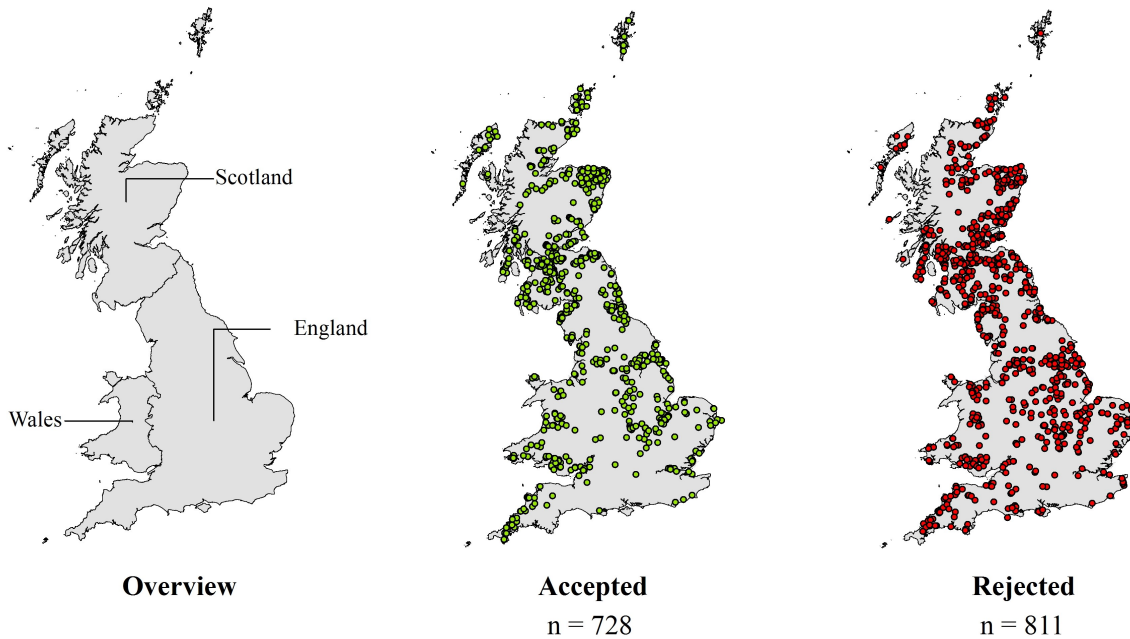


Figure 2: Location of onshore wind turbine planning applications used within the study. Location data extracted from the Renewable Energy Planning Database

geospatial analysis of potential turbine developments. This work therefore integrates the demographic and political parameters into geospatial analysis with the aim of improving the validity of such a model.

In consequence this paper builds upon many of the concepts developed by Van Rensburg et al., but aims to apply these concepts to a broader range of geospatial, demographic and political datasets.

### 3 Data and Variables

An extensive literature review was conducted to identify geospatial and social parameters which have been connected to the planning outcomes of wind turbine applications. Parameters were collated from existing geospatial models, and reviewing qualitative and quantitative studies. The key sources included Baban and Parry (Baban and Parry 2001), Langer et al. (Langer et al. 2016) and European Wind Energy Association (European Wind Energy Association 2012).

#### 3.1 Study Region

The study was conducted across Great Britain (England, Scotland & Wales). This was chosen because of the broadly similar categorisation of land types, nature designation, data availability and legislation across these regions.

#### 3.2 Data Sources

Information for turbine planning applications was collected through the Renewable Energy Planning Database (REPD) (DECC 2016) with planning dates between January 1991 and December 2016 ( $n=1755$ ). Detailed information for each planning application includes the location; year of application; number of turbines; turbine capacity and planning decision.

The planning permission status was summarised to two variables: accepted and rejected. Figure 2 highlights the location of the sites the distribution of these points and the planning status.

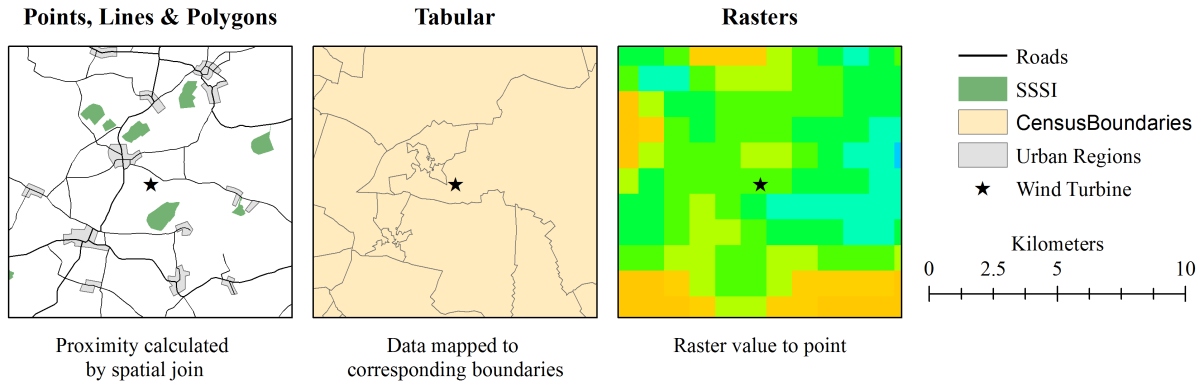


Figure 3: Mapping of Parameter data to turbine locations

Wind speeds were taken from the Numerical Objective Analysis of Boundary Layer (NOABL) wind speed database, which provides estimated annualised wind speed at 45m elevation at a resolution of 1km grid (DTI 2001). This source is used extensively by wind assessment studies conducted within the UK [4, 10, 17]. Physical features including roads, railways and urban areas were collected from OS Strategi (Ordnance Survey 2016). The electricity transmission network and Airport location data (civil and military) were extracted from Open Street Maps (OSM) (OSM 2016).

Site elevation and slope is used by a number of studies to determine site suitability (Baban and Parry 2001, Janke (2010)). Elevation was extracted from a Digital Elevation Model (DEM) of Europe at a 25m resolution (EEA 2013). This data was then used to calculate the slope using the slope calculation tool within ArcGIS 10.2.

Census data was collected at the Lower Super Output Area (LSOA) and Data Zone (Scotland) which represents regions with a population between 1000 and 3000 people. Data was collected for mean age; social grade (percentage of higher social class AB, representing higher & intermediate managerial, administrative, professional occupations); tenure (ownership of homes) and levels of qualifications (percentage of population with university degree).

Planning decisions for turbines are influenced by the Local Planning Authority, which are the local political bodies within the UK (HM Government 2014). In total, there are 405 local authorities across England, Scotland and Wales. Data was collected for the Conservatives; Labour, Liberal Democrat and the Scottish National Party (SNP), which between them hold 95% of seats within Great Britain.

### 3.3 Data Transformations

The data sources came in a range of formats including points, lines and polygons (roads, urban regions etc.), tabular (census and political data) and rasters (wind speed, elevation, slope) as highlighted in Figure 3. These parameters had to be summarised for each wind turbine farms within the model. ArcGIS 10.3 was used to aggregate the datasets as follows:

- **Points, lines and polygons:** A spatial join was completed to find the distance to the nearest feature for each turbine. A value of 0 is given if the turbine is within the feature.
- **Tabular:** corresponding political and census boundaries were used to map the tabular data, and turbines assigned the value of the region. In addition, political data was filtered to the year of the planning application to determine the political balance at the time of planning.
- **Raster:** The tool "Raster Value to Point" was used to extract the values for each site. The complete list of parameters used within the analysis is shown in Appendix A.

## 4 Methodology

A logistic regression analysis was conducted to model the factors associated with a positive planning outcome of wind turbine applications using the predictor variables listed in Table 2. A hierarchical approach was applied to the model building by adding variables sequentially based on the following order of priority: Physical attributes of the site; Distance to Features; Environmental and Natural Designations; Social (Census) Data and finally Political Data. This order was selected to reflect the current approach of geospatial studies, which as mentioned above, generally do not consider the last two.

For each additional set of parameters added to the model, diagnostic checks were made to ensure that the assumptions of logistic regression were maintained. Each parameter was checked for linearity of the logit for independent variables, absence of multicollinearity and independence of variables (Harrell 2001). Any parameters which violated these conditions were removed from the model. The overall fit of the model was assessed using Pearson chi-squared, Psuedo R<sup>2</sup> values and the residual deviance. Internal validation was used to assess the predictive accuracy of the model (Hosmer and Lemeshow 2004).

Once all parameters had been included within the model, a parsimonious model (one that accomplishes a desired level of explanation or prediction with as few predictor variables as possible) was produced to remove uninfluential parameters [44]. The Akaike Information Criterion (AIC) was used to determine the best fitting subset of parameters. This method avoids the issues associated with step-wise approaches of parameter removal (Harrell 2001) and resulted in nine effective parameters.

In addition, regional differences in parameters effects between England, Scotland and Wales were hypothesised due to differing population densities (England: 413/km<sup>2</sup>, Wales: 149/km<sup>2</sup>, Scotland: 68/km<sup>2</sup>) (ONS 2013) as well as differing institutional support, with Scotland in particular placing a greater emphasis on the development of onshore wind [46]. To test this, separate logistic regression models were produced for each country. These re-used the subset of influential nine parameters (see Figure 5) with the additional inclusion of Wind Speed, which had been suggested to be influential in previous research (Rensburg, Kelley, and Jeserich 2015).

## 5 Results

Table 1 provides the results from the parsimonious logistic regression analysis associating planning approval for all available cases. Statistically significant positive trends (e.g. increase in the parameter increases success rates) were observed for Number of Turbine; Distance to Urban Regions; Distance to National Parks; Percentage of local council Liberal Democrat and Percentage of local council Labour. Negative associations were found for Qualifications above L4 (university degree); Mean Age and Distance to Natura 2000 sites. The odds ratios (OR) are shown for each parameter in Figure 4, whereby an OR = 1 means the parameter does not affect odds of the planning outcome, OR > 1 indicate the parameters positively influence planning acceptance, OR < 1 represents a negative parameter influence.

As noted, the reduced parameter set of parameters were also used to assess models for England, Scotland and Wales separately and the odds ratios for each parameter for these models are shown in Figure ??.

Finally, a summary of the different logistic models is shown in Table 2.

## 6 Discussion

The “all countries” model highlighted several key parameters, as shown in Figure ??. First, for project characteristics, the number of turbines appears significant in determining project success although the magnitude of the effect is relatively small. It is suggested that developers are more likely to appeal the decisions made against larger wind farms, as rejection of such projects would result in a large loss of revenue.

A number of physical parameters have been identified as significant. The distance to urban areas has been highlighted as an indicator, although with considerable uncertainty as the confidence intervals indicate. There are a number of potential causes for this: firstly, it could indicate that high wind speed sites suitable for development tend to be naturally less populated (i.e. hilly, isolated regions). Additionally, it may reflect a so-called “Not in My Back Yard” (NIMBY) view from local population, with project in closer proximity to

Table 1: Logistic Regression results for the AIC optimised model.

Variable	Estimate	Std. Error	Pr	Sig.	Odds Ratio	2.50%	97.50%
(Intercept)	1.675	0.755	0.027	*	5.337	1.220	23.596
Number of Turbines	0.017	0.007	0.010	**	1.018	1.005	1.032
Distance to Urban Region	0.158	0.051	0.002	**	1.171	1.060	1.295
Distance to National Park	0.008	0.002	0.000	***	1.008	1.005	1.011
Distance to Ramsar	0.007	0.004	0.089	.	1.007	0.999	1.014
Distance to SPA	-0.013	0.006	0.041	*	0.987	0.974	0.999
Qualifications, L4	-0.036	0.007	0.000	***	0.965	0.952	0.978
Mean Age	-0.043	0.016	0.006	**	0.958	0.928	0.988
Political, Labour Share	0.009	0.003	0.001	***	1.009	1.004	1.015
Political, Liberal Democrat	0.009	0.004	0.030	*	1.009	1.001	1.017

Table 2: A summary of the logistic regression models

Variable	Full	Reduced	Nested: England	Nested: Scotland	Nested: Wales
Observations	1476	1476	646	698	132
Parameters	27	9	10	11	10
Nagelkerke R <sup>2</sup>	0.11	0.1	0.11	0.16	0.24
Pearson Chi-squared	113.7	111.9	51.5	89.3	25.9
Residual deviance	1932	1932	833	895	157
Model Accuracy	60%	62%	60%	65%	57%

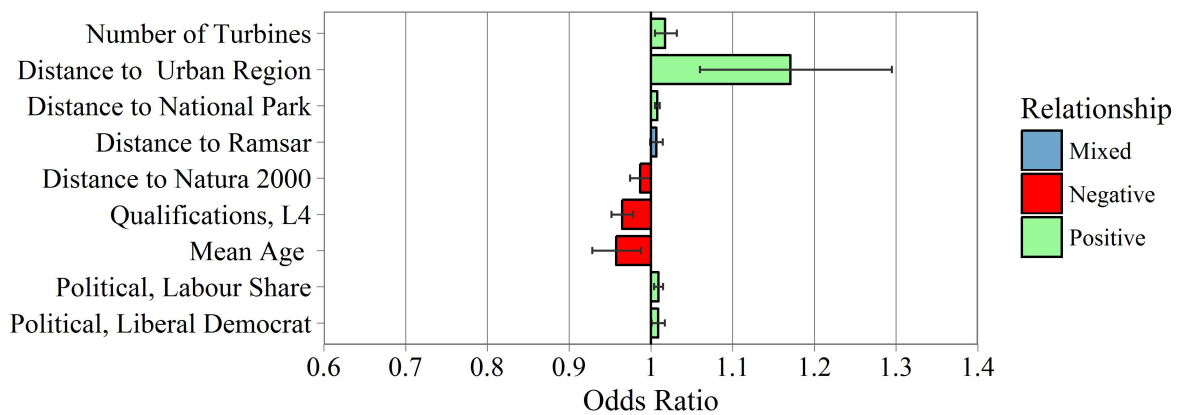


Figure 4: Odds plot for the reduced logistic regression mode. Error bars show the 95 confidence interval.

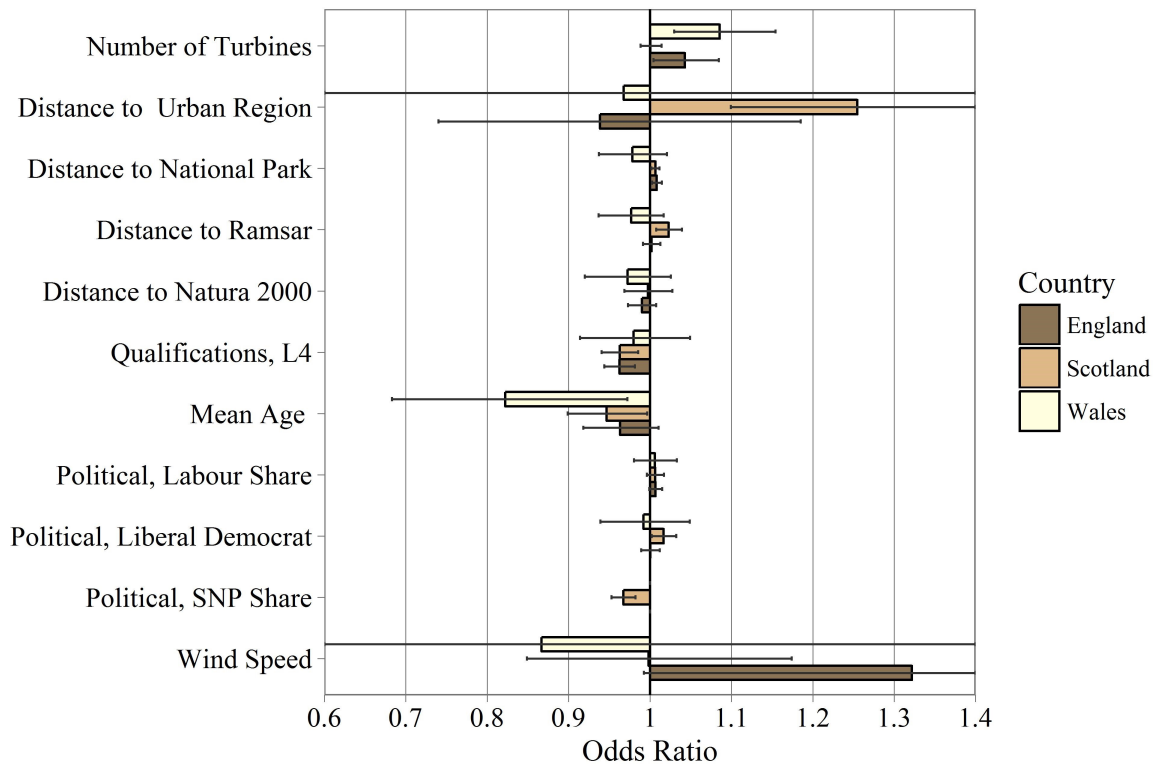


Figure 5: Odds plot for the nested logistic regression models for England, Scotland and Wales. Error bars indicate 95 confidence intervals.

urban areas being more likely to be rejected. However, there are conflicting views in literature whether NIMBY views impact wind turbines, with a range of positive (Haggett and Toke 2006, Jones and Richard Eiser (2010)) and negative (Rensburg, Kelley, and Jeserich 2015, Devine-Wright (2005), Populus (2005)) studies.

For Landscape and environmental designations, distance to National Parks and Natura 2000 sites were indicated as significant, although have marginal impacts. It had been expected that such parameters would be more influential, as the visual impact of wind turbine land is often stated as a reason for project refusal (Jones and Richard Eiser 2010).

Both the level of qualifications, and the mean age of the local populous have been retained as significant parameters for Demographic variables. It is suggested that regions of higher education may be more effective in organising campaign groups against such projects. This supports the hypothesis developed by Van der Horst and Toke (Horst and Toke 2010) that developers were “keen to avoid relatively privileged communities and target areas where people are thought to less likely put up a fight”.

For political variables, the percentage of local council authority control for Liberal Democrats and Labour both appear significant. It is suggested that this may be because these parties are broadly supportive of wind projects at a national level, and as such, local planning decisions may be more favourable for proposed projects. In addition, other studies have highlighted that voters of these parties are personally more in favour of onshore wind (Populus 2005), which may result in less local objection against projects in areas where they have stronger support.

There are notable parameters which do not prove influential, including wind speed and the proximity to airports. This may reflect that these parameters represent technical challenges which can be investigated in the early stages of project development, and therefore any sites that are not suitable will not seek planning permission.

Figure 5 highlights that, as hypothesised, the odds ratios for parameters vary by country, although the reduced number of cases in each model increases the uncertainty substantially as indicated by the confidence intervals. It can be seen that parameters such as Turbine Capacity; Wind Speed and Distance to Urban Regions show differing relationships for each country. These suggest that there may be differing motives for projects within each country as well as differential planning constraints. For example, projects within England appear to place

higher emphasis on wind speed. It should be noted that the wind resource is more marginal in England, and it is suggested that low wind speed may be an easy way for projects to be rejected.

For the Scotland model, the percentage of local council authority control for SNP appears significant, with increased percentage resulting in a lower acceptance rate. However, upon further inspection, this was deemed to be a potential confounding variable with the year of application: SNP have increased their share of council seats between 1990 and 2016 from 15% to 35%, while at the same time the average acceptance rates have reduced from around 75% to 40% across that period. This parameter therefore appears to capture a national trend, rather than highlighting any local political influences.

As shown in Table 3, there is a relatively low level of fit with Psuedo R<sup>2</sup> values of 0.1. Splitting the model into England, Scotland and Wales marginally improved these values to 0.11, 0.16 and 0.24, suggesting the model was a better fit for Scotland and Wales. However, while the accuracy of the Scotland model improved against the “all countries” model (60% to 65%), the Wales only model has decreased to 57%, suggesting that this model has been overfitted due to the reduced number of observations ( $n = 132$ ).

## 7 Conclusions & Implications

This paper has investigated the influence of geospatial, environmental, demographic and political attributes on the probability of wind farm planning approval in Great Britain between 1990 and 2016. The study findings reveal that local demographic and political parameters appear to influence the planning outcomes of projects, and that many of the geospatial parameters typically integrated into wind turbine models appear insignificant in determining site approval. To the authors' knowledge, such quantitative findings have not previously been demonstrated using such datasets.

It appears that certain demographics are less accepting of onshore wind in Great Britain. Given that UK planning policy has now devolved power locally and allowing local communities to have the final say on projects [48], there may be a clear block to development in certain regions in the country.

In addition, the results raise concerns of the predictive ability of existing geospatial modelling in locating wind turbine sites. These findings provide evidence to support existing literature that GIS tools in themselves are of limited applicability (D. Toke 2005, Malczewski (2004)), and supports the conclusion that greater emphasis needs to be given to the non-physical elements of a project (e.g. Community engagement with the scheme from an early stage) (Toke, Breukers, and Wolsink 2008, Wolsink (2000), Warren and McFadyen (2010)).

Because of the low model fit, future work aims to integrate more detailed information about specific wind turbine sites. It has not been possible to include detailed information of the project development within the analysis. Studies have highlighted that the interaction of developers with local communities are key indicators of positive planning approval outcomes (D. Toke 2005, Devine-Wright (2005), Wustenhagen, Wolsink, and Burer (2007)).

It should be noted that the parameters used to derive these findings are obtained with context to Great Britain, and therefore may have limited applicability internationally, and therefore should be applied with caution outside of this region. There are opportunities to expand upon this work by exploring the international context of the finding to widen its applicability.

## Acknowledgments

This work is part of the activities of the Energy and Climate Change Division and the Sustainable Energy Research Group at the University of Southampton [www.energy.soton.ac.uk](http://www.energy.soton.ac.uk). It is also supported by ESPRC under grant EP/J017698/1, Transforming the Engineering of Cities to Deliver Societal and Planetary Wellbeing and the Faculty of Engineering and Environment at the University of Southampton.

## Supplementary Files

The supporting data and analysis is available on Southampton Eprints (<https://eprints.soton.ac.uk/408181/>) and through GitHub (<https://github.com/mikey-harper/WindStatisticalAnalysis>)



Table 3: Summary of data sources used within model

ID	Category	Variable	Source	Data Type	Variable Value	Value Type	Unit
1	Turbine	Wind Turbine Planning Data	REPD	Tabular	Planning Outcome	Categorical	Accept/Reject
2		Turbine Capacity		Tabular	Megawatts/turbine	Continuous	MW
3		Number of Turbines		Tabular		Continuous	
4		Year		Tabular		Discrete	
5		Country		Tabular		Categorical	
6	Resource	Wind Speed	NOABL	Raster	Annualised Wind Speed	Continuous	m/s
7	Features	Airports	OpenGeo	Points	Distance to Feature	Continuous	km
8		Roads *	OS Strategi	Lines	Distance to Feature	Continuous	km
9		Railways		Lines	Distance to Feature	Continuous	km
10		Urban Areas		Polygons	Distance to Feature	Continuous	km
11		HV Powerlines **		Lines	Distance to Feature	Continuous	km
12	Landscape	Areas of Outstanding Natural Beauty	National Heritage	Polygons	Distance to Feature	Continuous	km
13		National Parks		Polygons	Distance to Feature	Continuous	km
14		Heritage Coast		Polygons	Distance to Feature	Continuous	km
15	Nature	Special Protection Areas		Polygons	Distance to Feature	Continuous	km
16		National Nature Reserve		Polygons	Distance to Feature	Continuous	km
17		Sites of Special Scientific Interest		Polygons	Distance to Feature	Continuous	km
18		Special Areas of Conservation		Polygons	Distance to Feature	Continuous	km
19	Geographic	Elevation	EU DEM	Raster	Height above sea level	Integer	m
20		Slope	Derived from 18	Raster	Gradient	Continuous	%
21	Census	Level of Qualification	ONS	Tabular	Higher than L4 ***	Continuous	%
22		Age		Tabular	Mean	Continuous	Years
23		Social Grade		Tabular	Social Grade AB ****	Continuous	%
24		Tenure		Tabular	Home Ownership	Continuous	%
25	Political	Conservatives	Populus	Tabular	Percentage of Council	Continuous	%
26		Labour		Tabular	Percentage of Council	Continuous	%
27		Liberal Democrat		Tabular	Percentage of Council	Continuous	%

<sup>a</sup> \* Roads are broken into four main categories: Motorways, A Roads, B Roads and Minor Roads. \*\* High Voltage network at 140-400kV. \*\*\* L4 represents degree level or above. \*\*\*\* AB represents Higher & intermediate managerial, administrative, professional occupation

## References

- Atici, Kazim Baris, Ahmet Bahadir Simsek, Aydin Ulucan, and Mustafa Umur Tosun. 2015. "A GIS-based Multiple Criteria Decision Analysis approach for wind power plant site selection." *Utilities Policy* 37. Elsevier Ltd: 86–96. doi:10.1016/j.jup.2015.06.001.
- Aydin, Nazli Yonca, Elcin Kentel, and Sebnem Duzgun. 2010. "GIS-based environmental assessment of wind energy systems for spatial planning: A case study from Western Turkey." *Renewable and Sustainable Energy Reviews* 14 (1): 364–73. doi:10.1016/j.rser.2009.07.023.
- Álvarez-Farizo, Begoa, and Nick Hanley. 2002. "Using conjoint analysis to quantify public preferences over the environmental impacts of wind farms. An example from Spain." *Energy Policy* 30 (2): 107–16. doi:10.1016/S0301-4215(01)00063-5.
- Baban, Serwan M J, and Tim Parry. 2001. "Developing and applying a GIS-assisted approach to locating wind farms in the UK." *Renewable Energy* 24 (1): 59–71. doi:10.1016/S0960-1481(00)00169-5.
- DECC. 2016. "Renewable Energy Planning Data." <https://www.gov.uk/government/collections/renewable-energy-planning-data>.
- Devine-Wright, Patrick. 2005. "Beyond NIMBYism: Towards an integrated framework for understanding public perceptions of wind energy." *Wind Energy* 8 (2): 125–39. doi:10.1002/we.124.
- DTI. 2001. "NOABL Windspeed Database." <https://goo.gl/6BALyv>.
- EEA. 2013. "Digital Elevation Model over Europe (EU-DEM)." <http://www.eea.europa.eu/data-and-maps/data/eu-dem/#tab-european-data>.
- European Wind Energy Association. 2012. *Wind Energy - The Facts: A Guide to the Technology, Economics and Future of Wind Power*. Routledge.
- Gass, Viktoria, Johannes Schmidt, Franziska Strauss, and Erwin Schmid. 2013. "Assessing the economic wind power potential in Austria." *Energy Policy* 53 (2013). Elsevier: 323–30. doi:10.1016/j.enpol.2012.10.079.
- Groothuis, Peter A., Jana D Groothuis, and John C Whitehead. 2008. "Green vs. green: Measuring the compensation required to site electrical generation windmills in a viewshed." *Energy Policy* 36 (4): 1545–50. doi:10.1016/j.enpol.2008.01.018.
- Haggett, Claire, and David Toke. 2006. "Crossing the great divide-using multi-method analysis to understand opposition to windfarms." *Public Administration* 84 (1): 103–20. doi:10.1111/j.0033-3298.2006.00495.x.
- Hansen, H. S. 2005. "GIS-based Multi-Criteria Analysis of Wind Farm Development." *Proceedings of the 10th Scandinavian Research Conference on Geographical Information Science*, 75–87.
- Harrell, Frank E. 2001. *Regression modeling strategies. With applications to linear models, logistic regression, and survival analysis*. doi:10.1007/978-1-4757-3462-1.
- HM Government. 2014. "Planning Portal Northern Ireland."
- Horst, Dan van der, and David Toke. 2010. "Exploring the landscape of wind farm developments; local area characteristics and planning process outcomes in rural England." *Land Use Policy* 27 (2): 214–21. doi:10.1016/j.landusepol.2009.05.006.
- Hosmer, David W, and Stanley Lemeshow. 2004. *Applied Logistic Regression Second Edition*. doi:10.1002/0471722146.
- Janke, J. R. 2010. "Multicriteria GIS modeling of wind and solar farms in Colorado." *Renewable Energy* 35: 2228–34. <http://people.umass.edu/bethanyb/Janke, 2010.pdf>.
- Jones, Christopher R., and J. Richard Eiser. 2010. "Understanding 'local' opposition to wind development in the UK: How big is a backyard?" *Energy Policy* 38 (6). Elsevier: 3106–17. doi:10.1016/j.enpol.2010.01.051.
- Krueger, Andrew D., George R. Parsons, and Jeremy Firestone. 2011. "Valuing the visual disamenity of offshore wind power projects at varying distances from the shore: An application on the Delaware

- shoreline." *Land Economics* 87 (2): 268–83. <http://www.scopus.com/inward/record.url?eid=2-s2.0-79951908702&partnerID=tZOtx3y1>.
- Langer, Katharina, Thomas Decker, Jutta Roosen, and Klaus Menrad. 2016. "A qualitative analysis to understand the acceptance of wind energy in Bavaria." *Renewable and Sustainable Energy Reviews* 64. Elsevier: 248–59. doi:10.1016/j.rser.2016.05.084.
- Lee, Amy H I, Hsing Hung Chen, and He Yau Kang. 2009. "Multi-criteria decision making on strategic selection of wind farms." *Renewable Energy* 34 (1): 120–26. doi:10.1016/j.renene.2008.04.013.
- Malczewski, Jacek. 2004. "GIS-based land-use suitability analysis: A critical overview." *Progress in Planning* 62 (1): 3–65. doi:10.1016/j.progress.2003.09.002.
- Miller, Adam, and Ruopu Li. 2014. "A Geospatial Approach for Prioritizing Wind Farm Development in Northeast Nebraska, USA." *ISPRS International Journal of Geo-Information* 3 (3): 968–79. doi:10.3390/ijgi3030968.
- Neufville, Laurence. 2013. "Wind farm Site Suitability Selection using Multi-Criteria Analysis (MCA) and Spatial Modelling," no. July: 1–29.
- Noorollahi, Younes, Hossein Yousefi, and Mohammad Mohammadi. 2015. "Multi-criteria decision support system for wind farm site selection using GIS." *Sustainable Energy Technologies and Assessments* 13. Elsevier Ltd: 38–50. doi:10.1016/j.seta.2015.11.007.
- ONS. 2013. "2011 Census, Quick Statistics for Wales on National Identity, Passports Held and Country of Birth."
- Ordnance Survey. 2016. "OS Strategi." <https://data.gov.uk/dataset/strategi>.
- OSM. 2016. "Overpass API." <https://overpass-turbo.eu/>.
- Populus. 2005. "Energy Balance of Power Poll Fieldwork : July 1st-6th 2005," 1–23.
- Rensburg, Thomas M. van, Hugh Kelley, and Nadine Jeserich. 2015. "What influences the probability of wind farm planning approval: Evidence from Ireland." *Ecological Economics* 111. Elsevier B.V.: 12–22. doi:10.1016/j.ecolecon.2014.12.012.
- Resch, Bernd, Günther Sagl, Tobias Törnros, Andreas Bachmaier, Jan-Bleicke Eggers, Sebastian Herkel, Sattaya Narmsara, and Hartmut Gündra. 2014. "GIS-Based Planning and Modeling for Renewable Energy: Challenges and Future Research Avenues." *ISPRS International Journal of Geo-Information* 3 (2): 662–92. doi:10.3390/ijgi3020662.
- Sliz-Szkliniarz, Beata, and Joachim Vogt. 2011. "GIS-based approach for the evaluation of wind energy potential: A case study for the Kujawsko-Pomorskie Voivodeship." *Renewable and Sustainable Energy Reviews* 15 (3). Elsevier Ltd: 1696–1707. doi:10.1016/j.rser.2010.11.045.
- SQW Energy. 2010. "Renewable and Low-carbon Energy Capacity Methodology Methodology for the English Regions." January.
- Toke, Dave. 2005. "Explaining wind power planning outcomes: Some findings from a study in England and Wales." *Energy Policy* 33 (12): 1527–39. doi:10.1016/j.enpol.2004.01.009.
- Toke, David, Sylvia Breukers, and Maarten Wolsink. 2008. "Wind power deployment outcomes: How can we account for the differences?" *Renewable and Sustainable Energy Reviews* 12 (4): 1129–47. doi:10.1016/j.rser.2006.10.021.
- UNEP. 2016. "Global trends in renewable energy." <https://goo.gl/OGtPT4>.
- Van Haaren, Rob, and Vasilis Fthenakis. 2011. "GIS-based wind farm site selection using spatial multi-criteria analysis (SMCA): Evaluating the case for New York State." *Renewable and Sustainable Energy Reviews* 15 (7). Elsevier Ltd: 3332–40. doi:10.1016/j.rser.2011.04.010.
- Voivontas, D., D. Assimacopoulos, a. Mourelatos, and J. Corominas. 1998. "Evaluation of renewable energy potential using a GIS decision support system." *Renewable Energy* 13 (3): 333–44. doi:10.1016/S0960-1481(98)00006-8.
- Wang, Qianna, Martin Mwirigi M'ikiugu, and Isami Kinoshita. 2014. "A GIS-based approach in support of spatial planning for renewable energy: A case study of Fukushima, Japan." *Sustainability (Switzerland)* 6 (4):

2087–2117. doi:10.3390/su6042087.

Warren, Charles R., and Malcolm McFadyen. 2010. "Does community ownership affect public attitudes to wind energy? A case study from south-west Scotland." *Land Use Policy* 27 (2): 204–13. doi:10.1016/j.landusepol.2008.12.010.

Watson, Joss J W, and Malcolm D. Hudson. 2015. "Regional Scale wind farm and solar farm suitability assessment using GIS-assisted multi-criteria evaluation." *Landscape and Urban Planning* 138. Elsevier B.V.: 20–31. doi:10.1016/j.landurbplan.2015.02.001.

Wolsink, Maarten. 2000. "Wind power and the NIMBY-myth: institutional capacity and the limited significance of public support." *Renewable Energy* 21 (1): 49–64. doi:10.1016/S0960-1481(99)00130-5.

Wustenhagen, Rolf, Maarten Wolsink, and Mary Jean Burer. 2007. "Social acceptance of renewable energy innovation: An introduction to the concept." *Energy Policy* 35 (5): 2683–91. doi:10.1016/j.enpol.2006.12.001.

Yue, Cheng D., and Shi Sian Wang. 2006. "GIS-based evaluation of multifarious local renewable energy sources: A case study of the Chigu area of southwestern Taiwan." *Energy Policy* 34 (6): 730–42. doi:10.1016/j.enpol.2004.07.003.