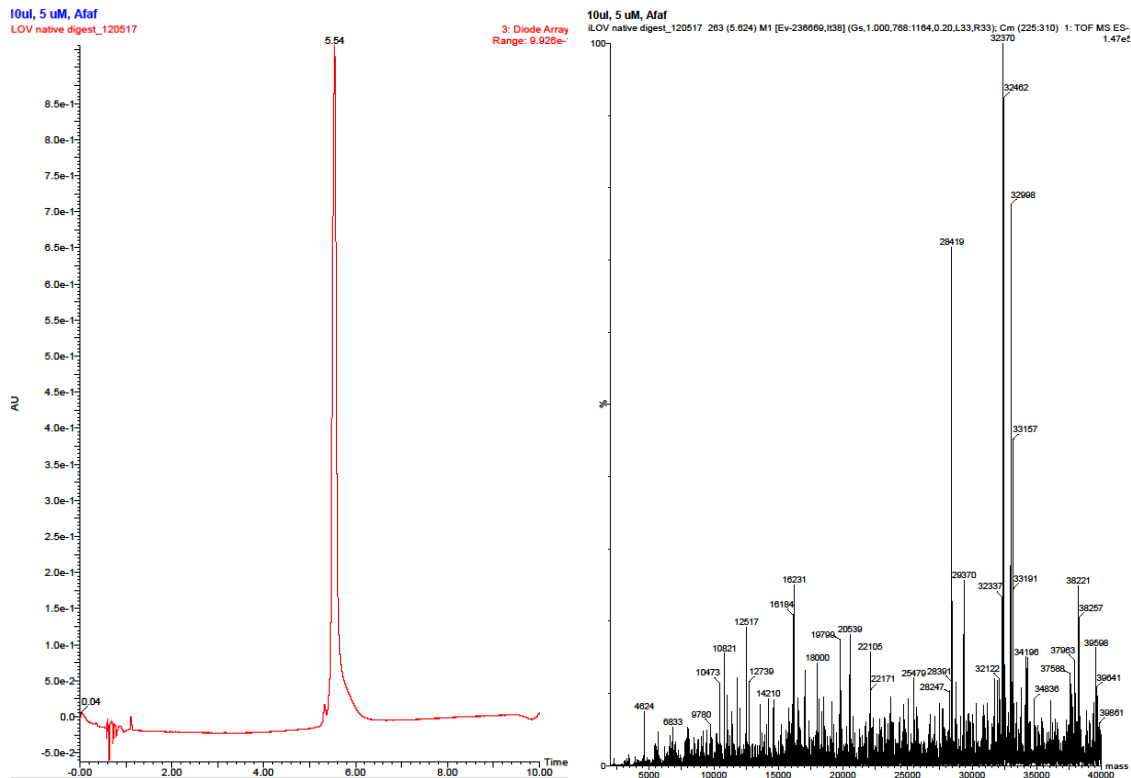


Analysis of the Acil-digested genes.

Acil restriction endonuclease sites are highlighted in green.

Unmodified, click-linked iLOV



Forward:

F1: pTATGATTGAAAAAACTTTGTTATTACCGATC (9900, has not been detected)

F2: pCGCGCCTGCCAGATAACCCTATCATCTTGCATCCGATGGCTTCTGGAGCTGACGGAATATAG
CCGTGAGGAAATTCTGGGGCGCAATGCC (calc: 28419, found : 28419)

F3: pCGCTTTTTACAGGGTCCAGAAACCGACCAGGCTACTGTTCAAAGATTCTGTGACGCTATTCGCG
ACCAGCGTGAAACGACCGTTCAGCTGATCAACTATACAAAAG (calc: 32995, found: 32998)

F4: pCGGTAAAAAATTTTGAATTTGTTACACCTTCAGCCGGTGC GTGATCAGAAAGGCGAGCTGCA
ATACTTTATTGGGGTTCAGTTAGATGGATCCGATCATGTGG (calc: 32368, found: 32370)

A peak at 38221 was observed, one explanation could be incomplete digestion of F1+F2 with loss of the phosphate group at the 5'-end

Reverse

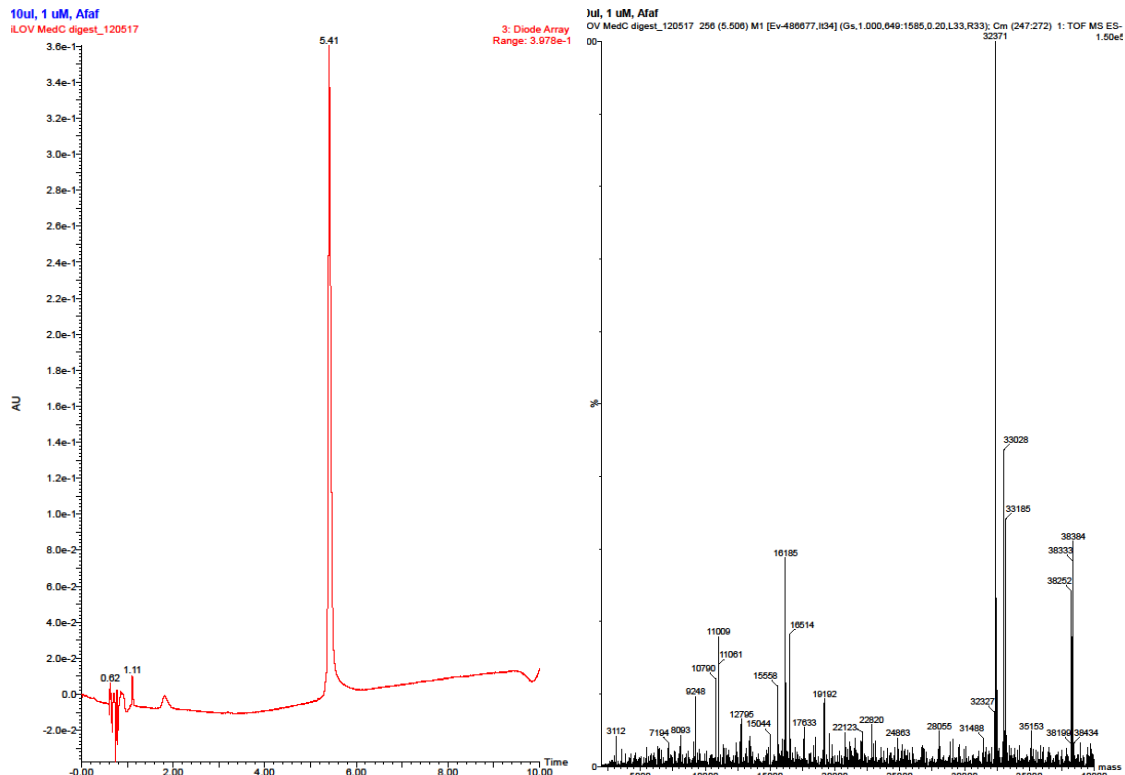
R1:AATCCACATGATCGGATCCATCTAACTGAACCCCAATAAAGTATTGCAGCTCGCCTTTCTGATCA
CGCACCGGCTGAAGGTGTAACAAATCCAAAATTTTAC (calc:, 32460, found:32462) this fraction was detected with no phosphate at the 5'-end

R2: pCGCTTTTGGTATAGTTGATCAGCTGAACGGTCGTTTCACGCTGGTCGCGAATAGCGTCACGAAT
CTTTTGAACAGTAGCCTGGTCGGTTTCTGGACCCTGTAAAAAG (calc:, 33154, found: 33157)

R3: CGGCGCATTGCGCCCCAGAATTCCTCACGGCTATATTCCGTCAGCTCCAGGAAGCCATCGGATGC
AAAGATGATAGGGTTATCTGGCAGGC (calc:, 28388, found: 28391) small peak was detected

R4: pCGGATCGGTAATAACAAAGTTTTTTTCAATCA (calc:, 9901, has not been detected)

5-meC click-linked iLOV



Forward:

F1+F2: pTATGATTGAAAAAACTTTGTTATTACCGATC^mCG^mCGCCGTGCCAGATAACCCTATCATCTT
GCATCCGATGGCTTCTGGAGCTGACGGAATATAGCCGTGAGGAAATTCTGGGGCGCAATGCC

(calc with no p: 38250, found: 38252; calc with p: 38330, found: 38333). As expected due to the presence of Me dC at the restriction site, undigested strand F1+F2 was detected.

F3: pCGCTTTTTACAGGGTCCAGAAACCGACCAGGCTACTGTTCAAAGATTCTGTGACGCTATT^mCG^m
CGACCAGCGTGAAACGACCGTTCAGCTGATCAACTATACAAAAG (calc: 33023, found: 33028)

F4: pCGGTAAAAAATTTTGGAAATTTGTTACACCTTCAGCCGGTTCGTGATCAGAAAGGCGAGCTGCA
ATACTTTATTGGGGTTCAGTTAGATGGATCCGATCATGTGG (calc: 32368, found: 32371)

Reverse

R1: AATCCACATGATCGGATCCATCTAACTGAACCCAATAAAGTATTGCAGCTCGCCTTTCTGATCA
CGACCGGCTGAAGGTGTAACAAATCCAAAATTTTAC (calc: 32460, found: 32463) this
fraction was detected with no phosphate at the 5'-end

R2: pCGCTTTTGGTATAGTTGATCAGCTGAACGGTCTTTTCACGCTGGT^mCG^mCGAATAGCGTCACGA
ATCTTTTGAACAGTAGCCTGGTCGGTTTCTGGACCCTGTAAAAAG (calc: 33182, found: 33185)

R3+R4: pCGG GCATTGCGCCCCAGAATTCCTCACGGCTATATTCCGTCAGCTCCAGGAAGCCATCGG
ATGCAAAGATGATAGGGTTATCTGGCAGG^mC^mCGG ATCGGTAATAACAAAGTTTTTTTCAATCA
(calc: 38379, found:38384). As expected due to the presence of Me dC at the restriction site,
undigested strand R3+R4 was detected.