

Analytical traces for oligonucleotides used in this study, as listed in Supplementary Table 1

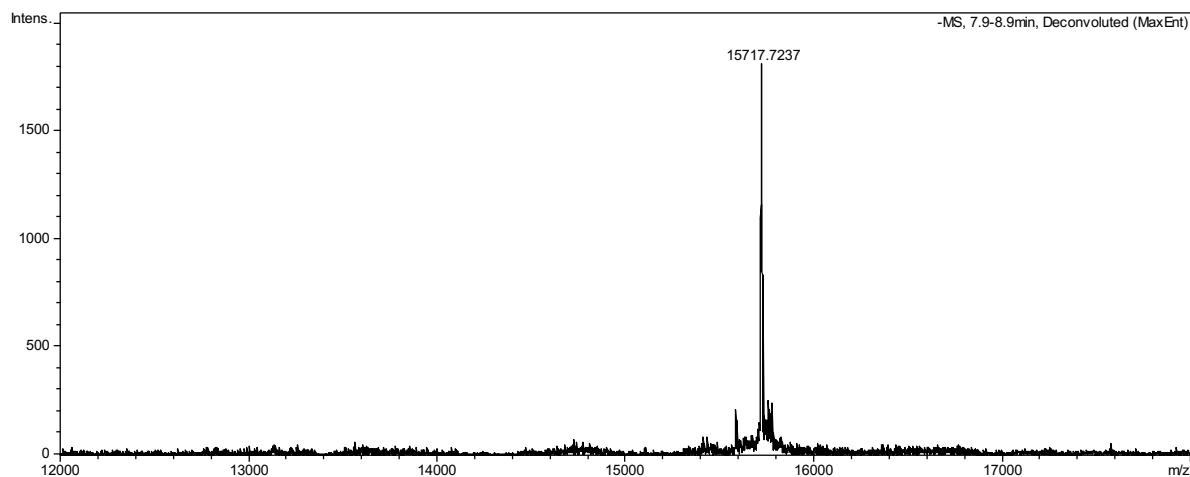
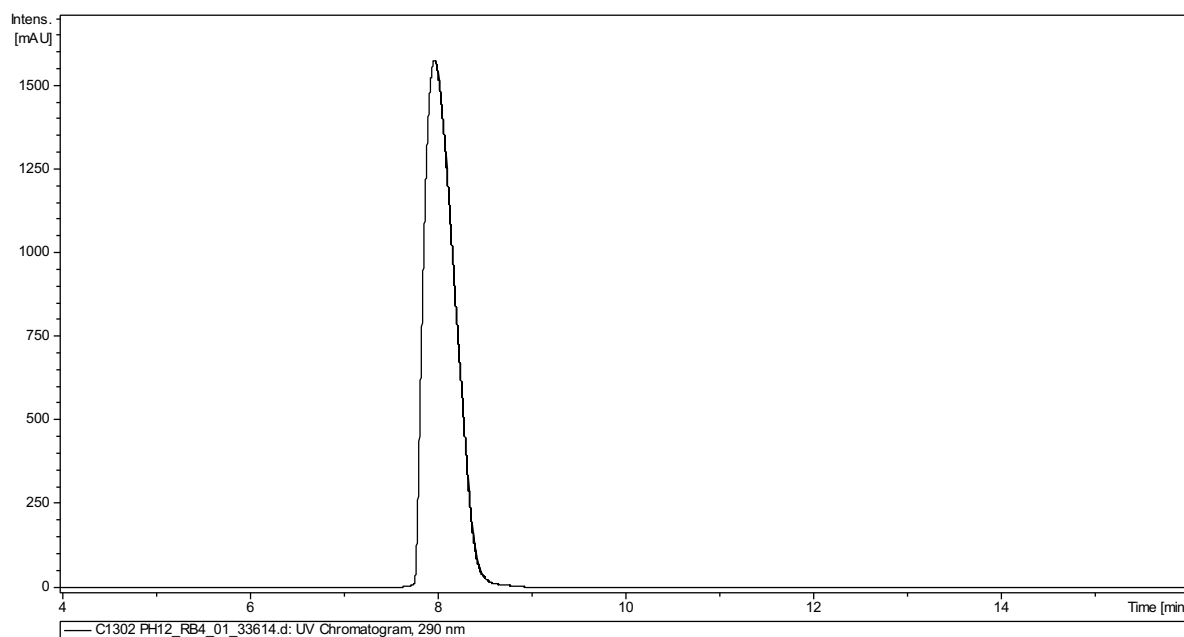
For all following oligonucleotides:

^P = 5'-phosphate, ^K = 3'-alkyne, ^Z = 5'-azide, ^mC = 5-methylcytosine, fluo = fluorescent oligo, underline = restriction site included to enable ligation of insert into vector, X = amino C6 dT labelled with sulfo-Cy3 active ester (from Lumiprobe, Life Science solutions, Cat. no.: 41320), Y = amino C6 dT labelled with Oregon green 488 active ester (Molecular Probes, Cat. no.: 06185).

MS recorded on Bruker Daltonics micro-TOF in ES-(negative mode). Masses were calculated using the OligoAnalyzer 3.1 tool by IDT

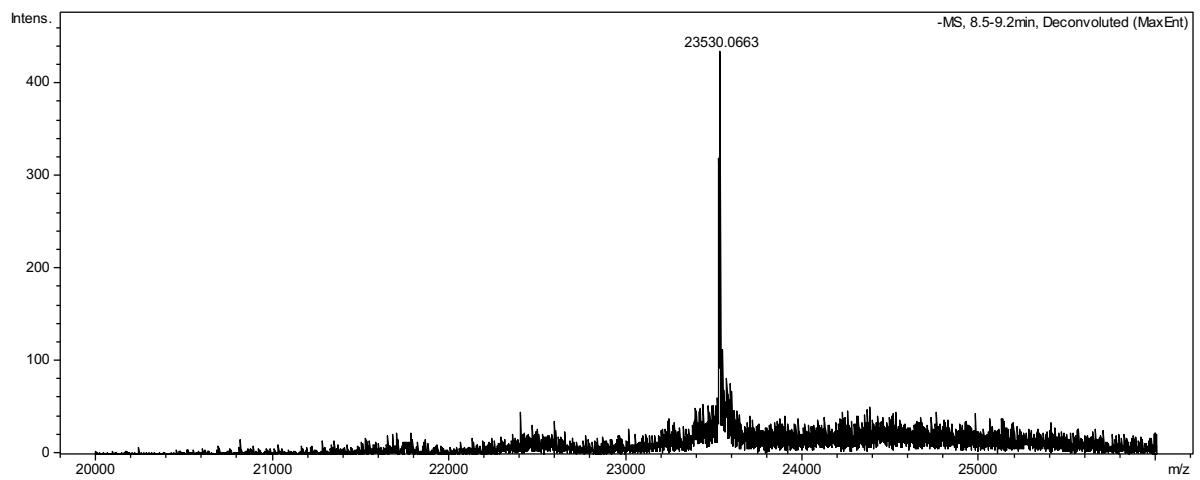
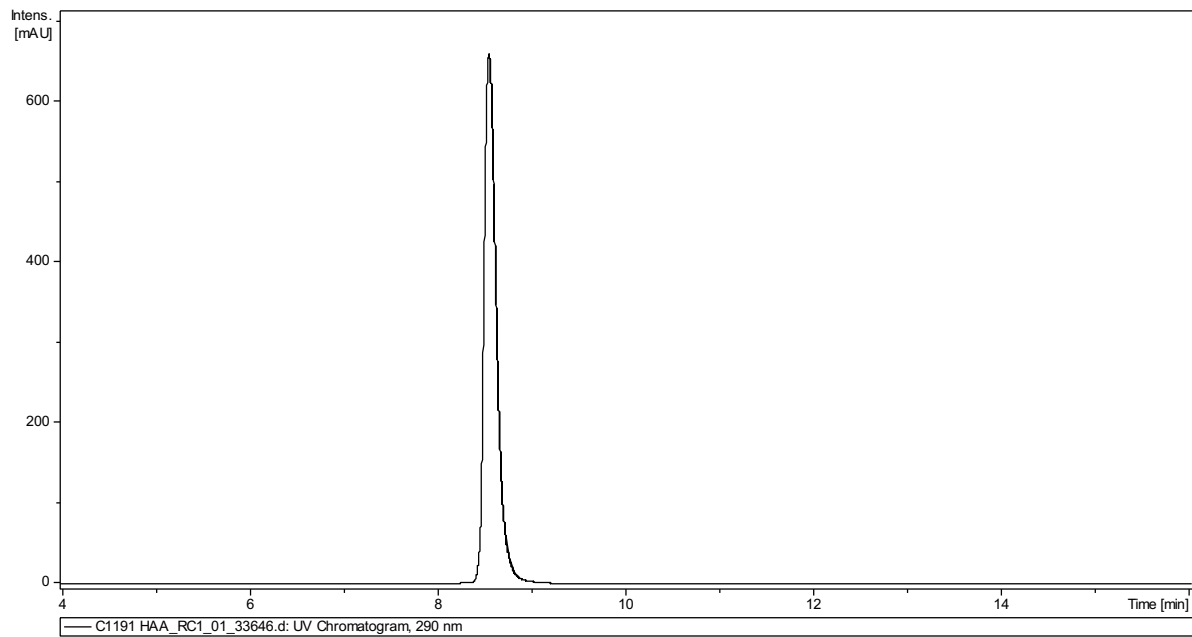
F1 calculated mass = 15716.62

^PTATGATTGAAAAAACTTTGTTATTACCGATCCGCGCCTGCCAGATAACC^K



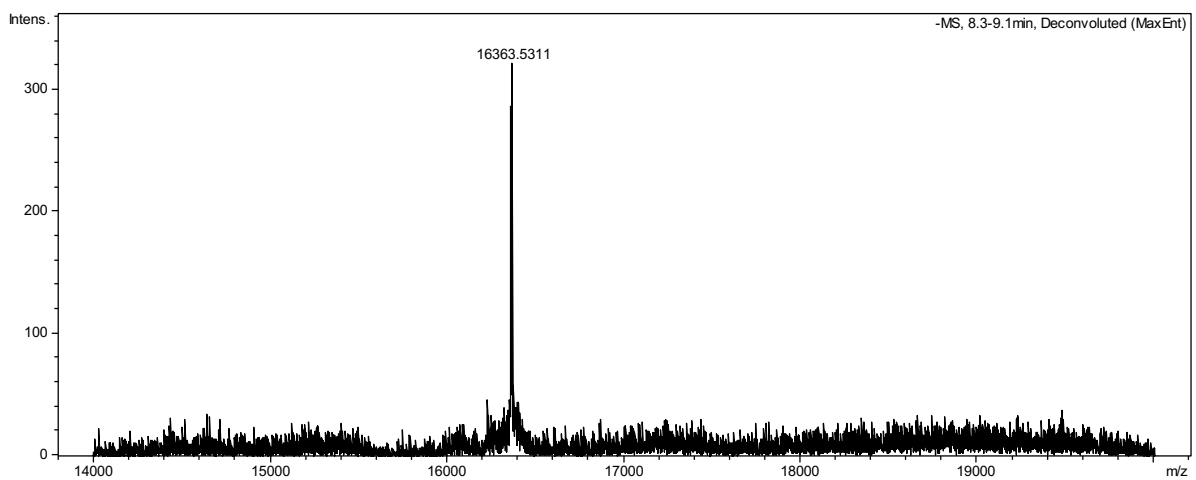
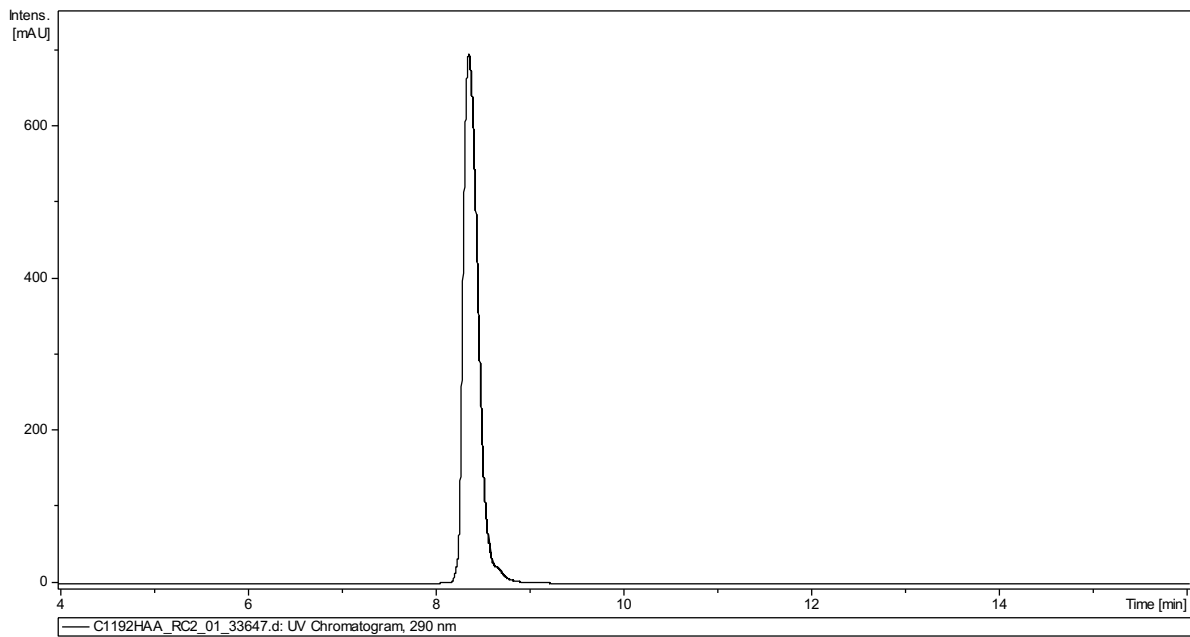
F2 calculated mass = 23528.30

²ATCATCTTTGCATCCGATGGCTTCCTGGAGCTGACGGAATATAGCCGTGAGGAAATTCTGGG
GCGCAATGCCG^K



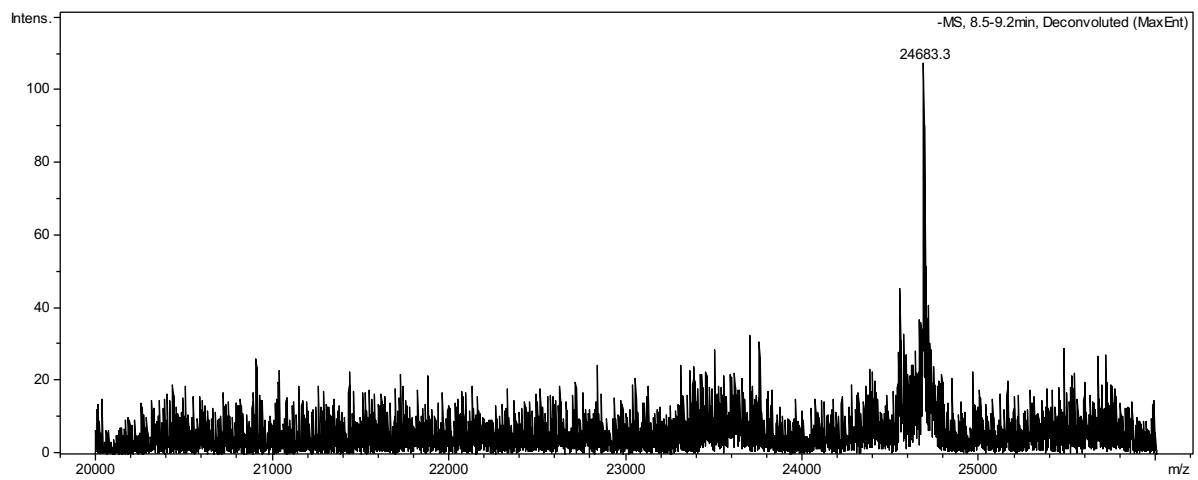
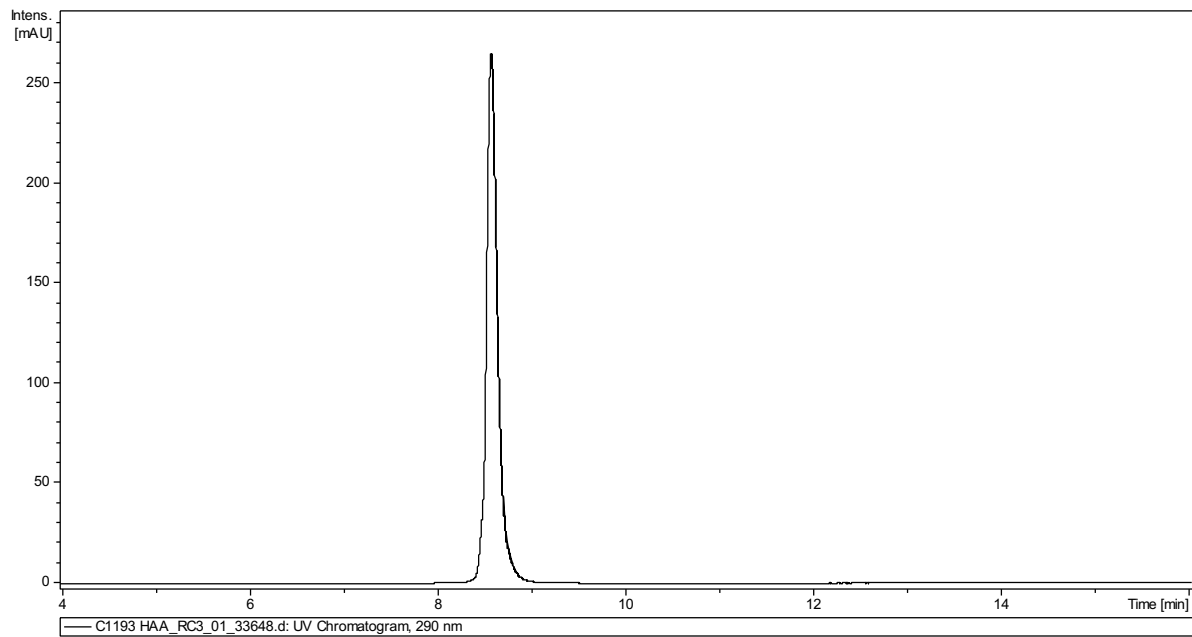
F3 calculated mass = 16362.88

²TTTTACAGGGTCCAGAAACCGACCAGGCTACTGTTCAAAAGATTCGTGACG^K



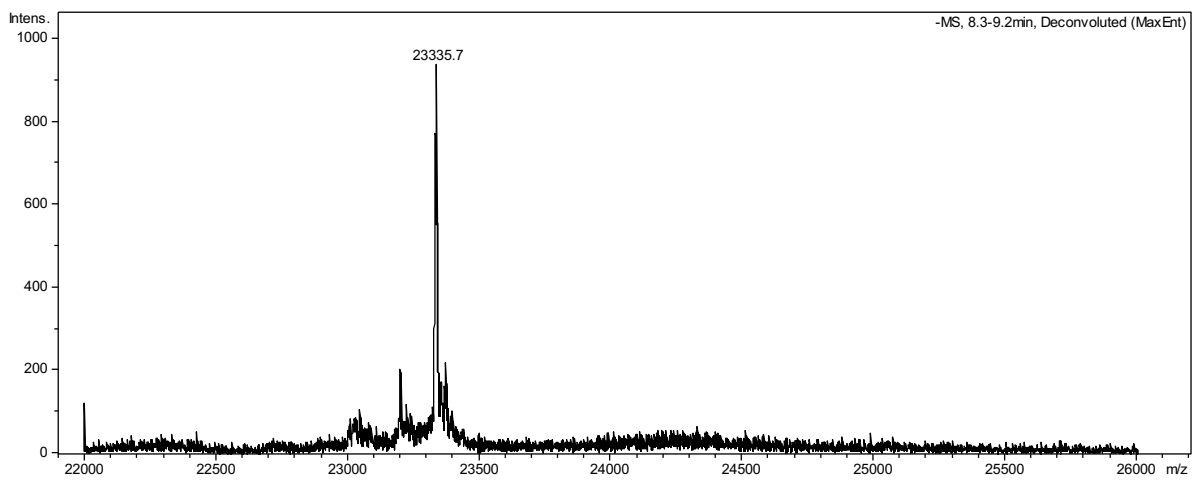
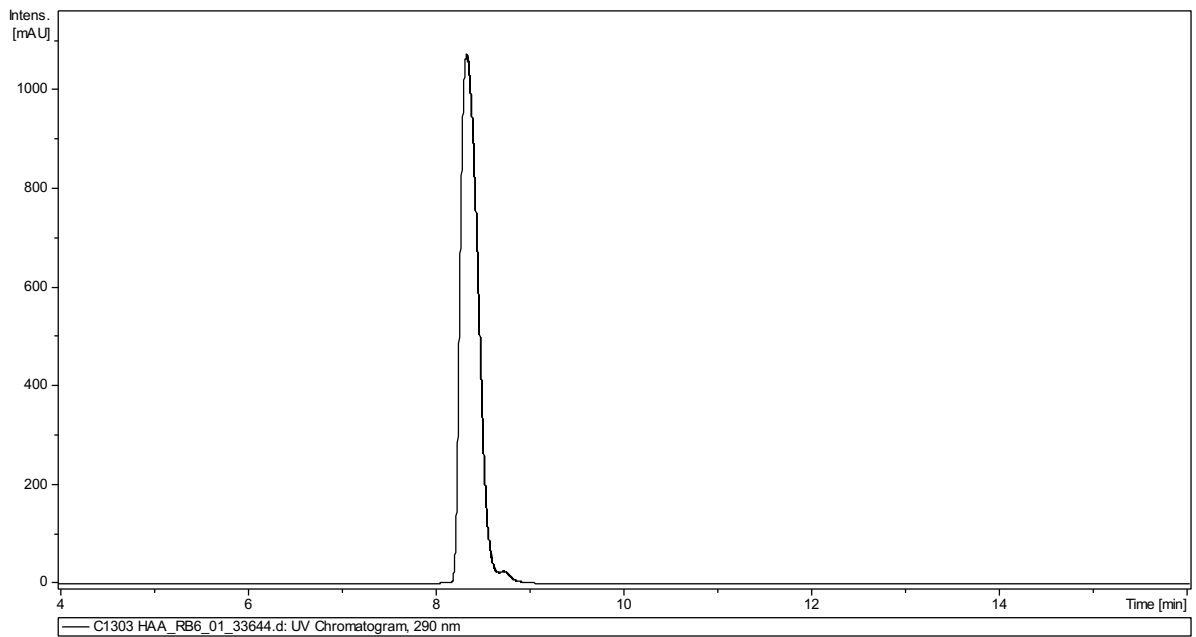
F4 calculated mass = 24684.11

²ATTCGCGACCAGCGTGAAACGACCGTTCAGCTGATCAACTATACCAAAGCGGTAAAAAATT
TTGGAATTTGTTACAC^K



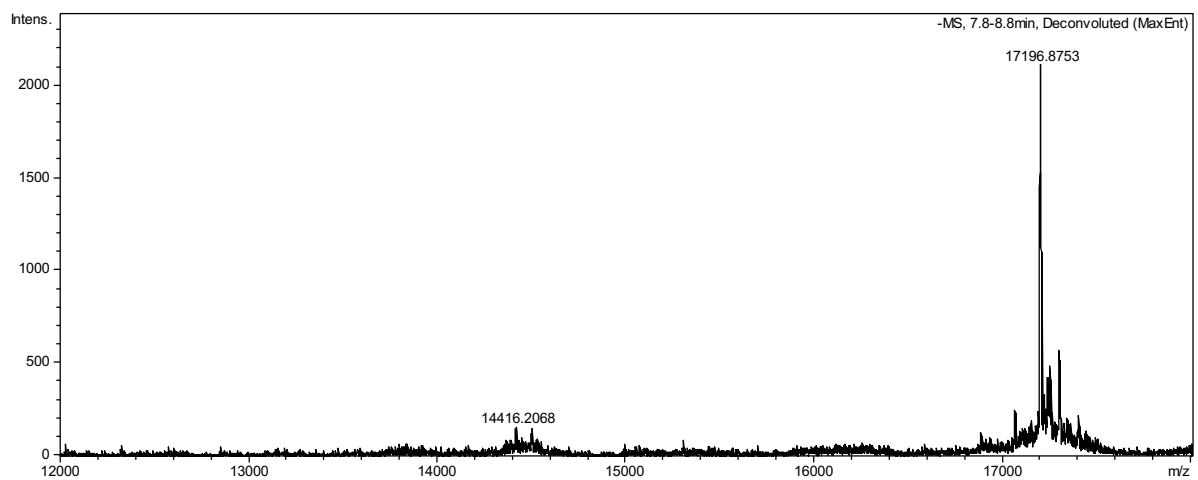
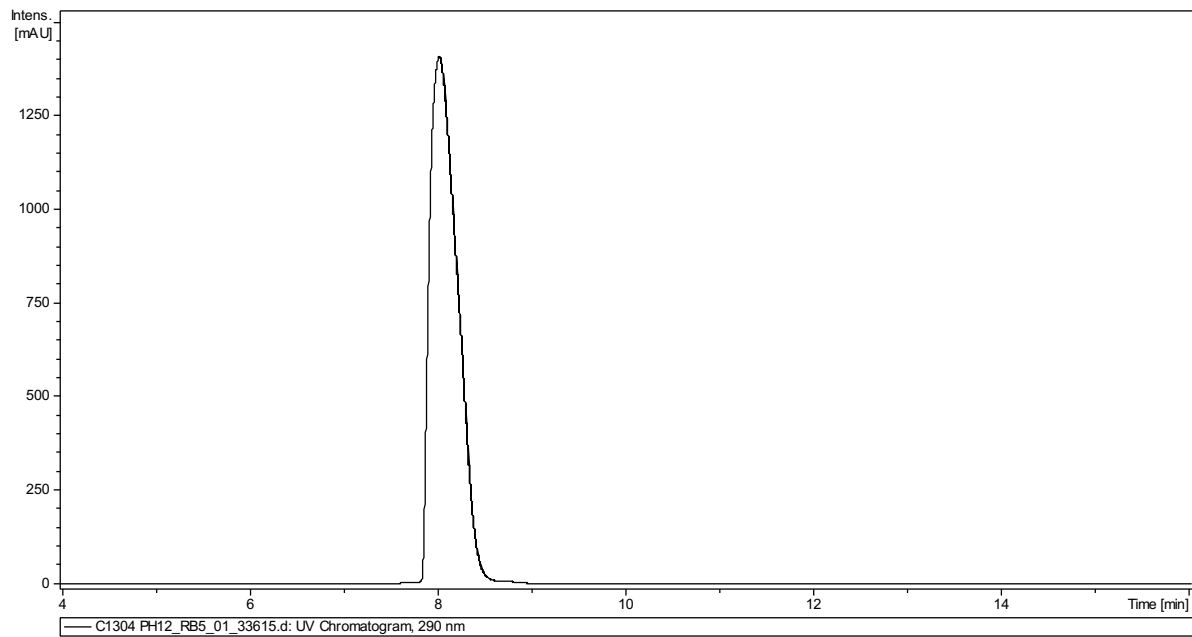
F5 calculated mass = 23335.38

²TCAGCCGGTGCGTGATCAGAAAGGCGAGCTGCAATACTTTATTGGGGTTTCAGTTAGATGGAT
CCGATCATGTGG



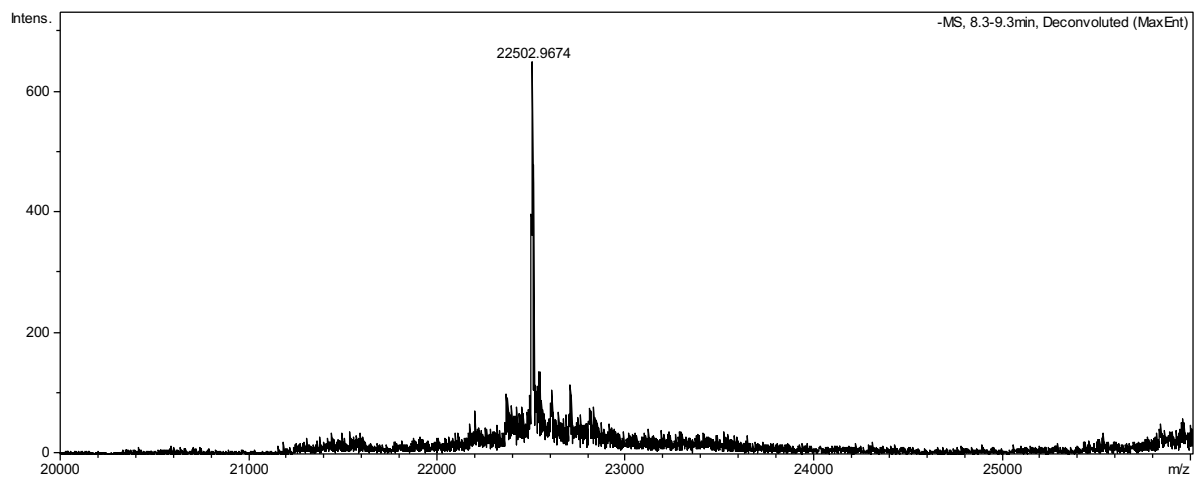
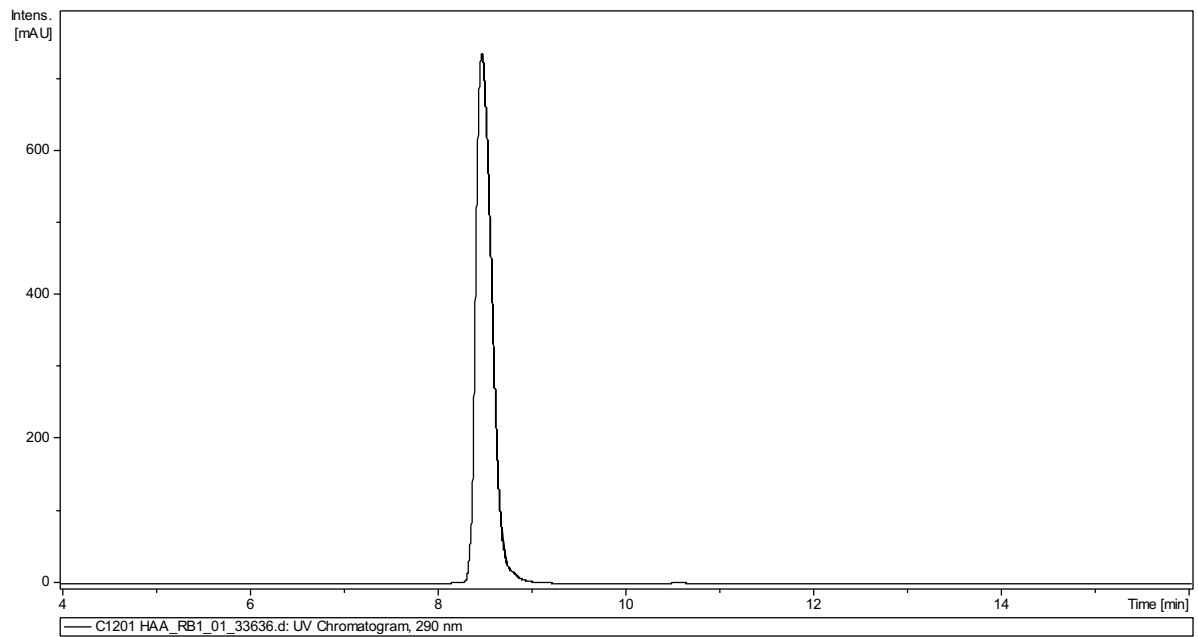
R1 calculated mass = 17195.55

^PAATTCCACATGATCGGATCCATCTAACTGAACCCCAATAAAGTATTGCAGCTCGC^K



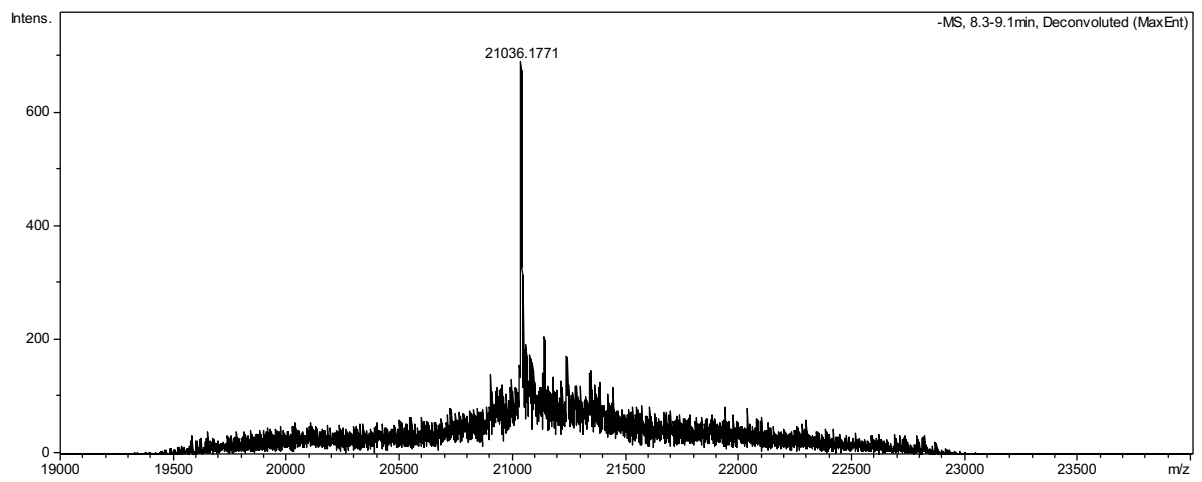
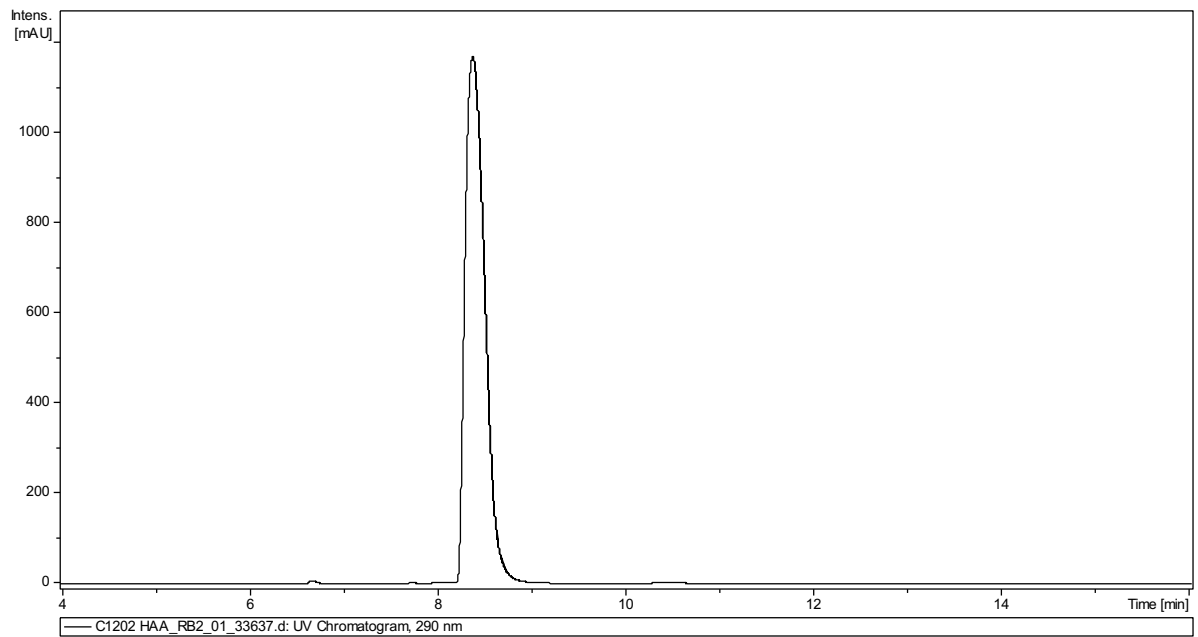
R2 calculated mass = 22502.72

²TTCTGATCACGCACCGGCTGAAGGTGTAACAAATTCCAAAATTTTTTACCGCTTTTGGTATAG
TTGATCAG^K



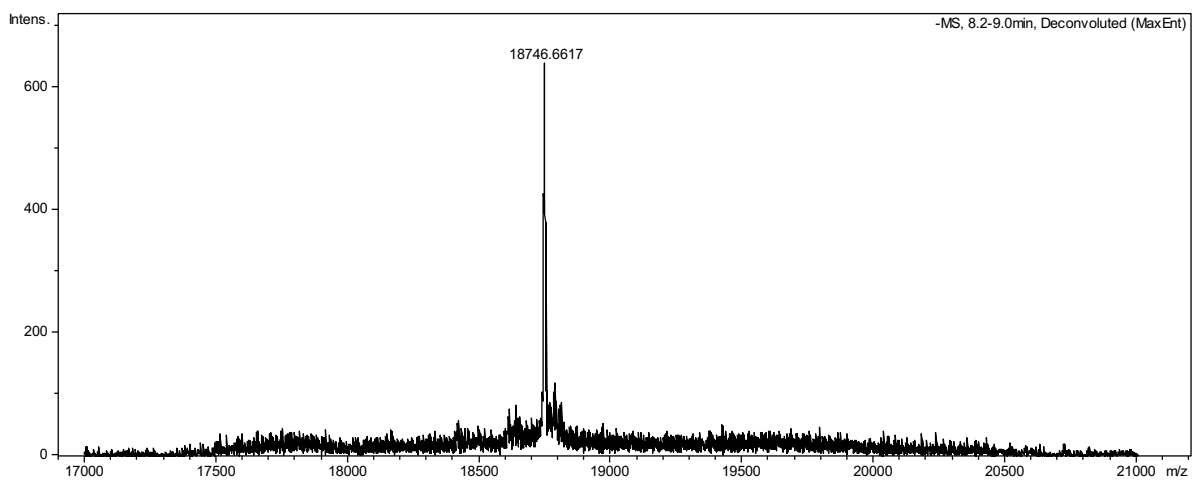
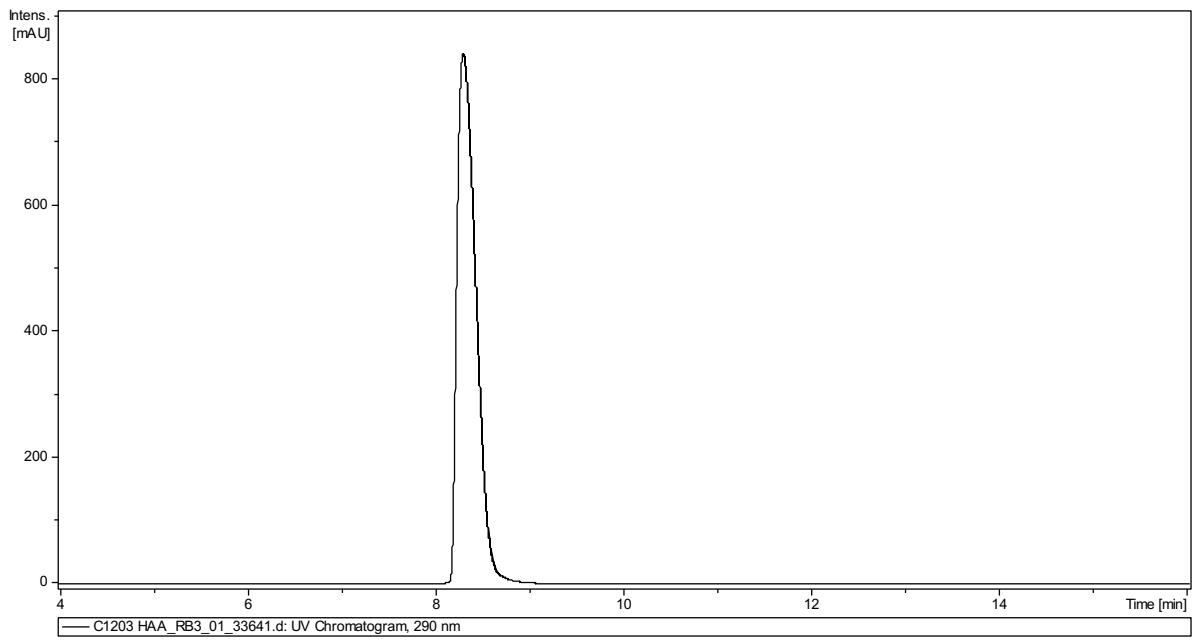
R3 calculated mass = 21037.75

^ZGAACGGTCGTTTCACGCTGGTCGCGAATAGCGTCACGAATCTTTTGAACAGTAGCCTGGTTCG
GTTT^K



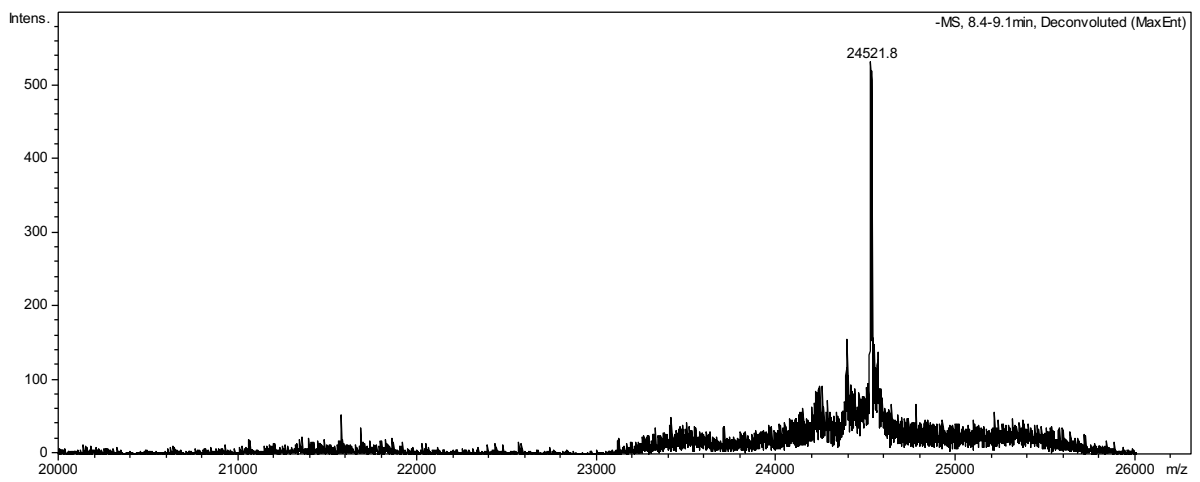
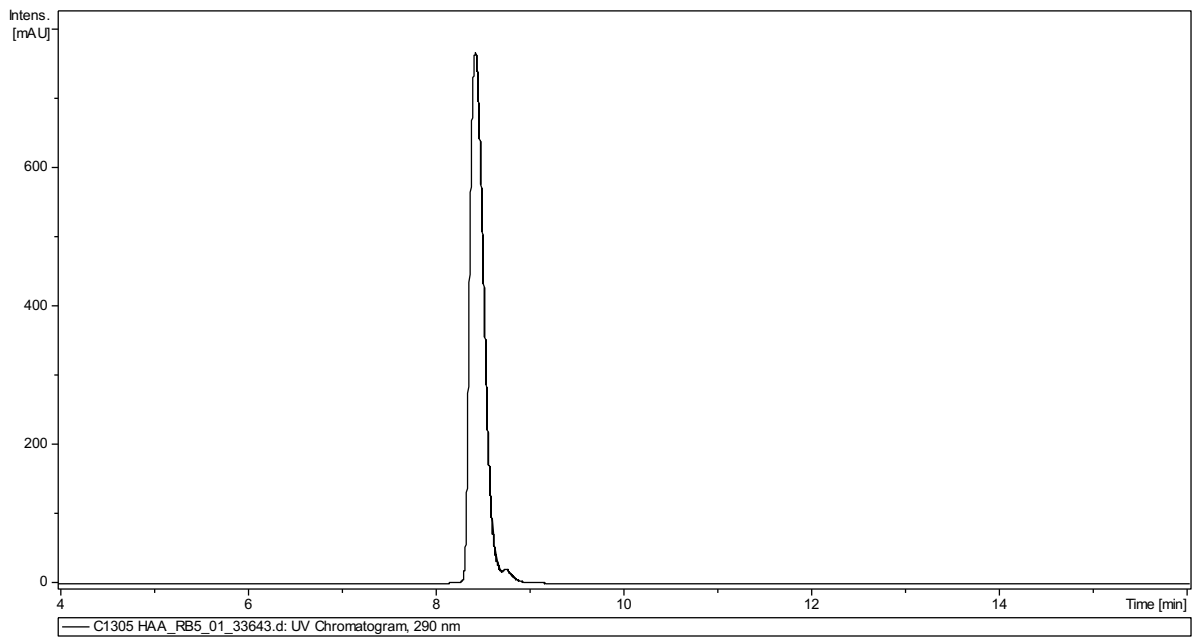
R4 calculated mass = 18747.35

^ZGGACCCTGTAAAAAGCGGGCATTGCGCCCCAGAATTCCTCACGGCTATATTCCGTCAG^K



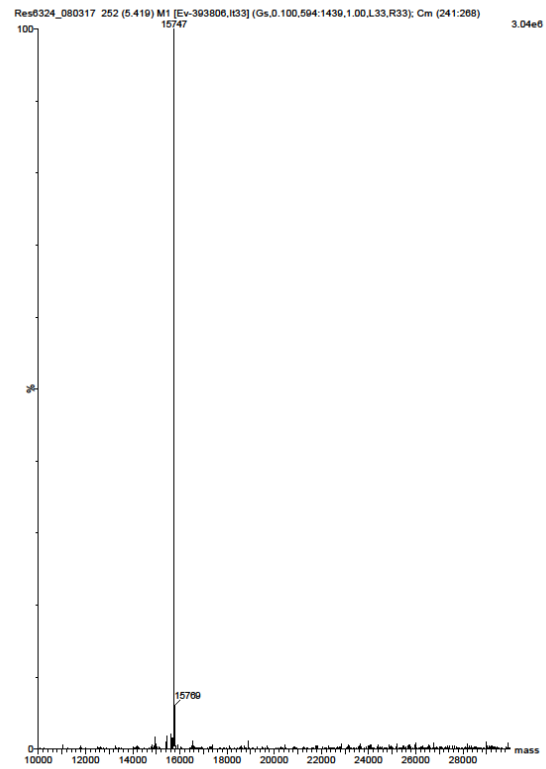
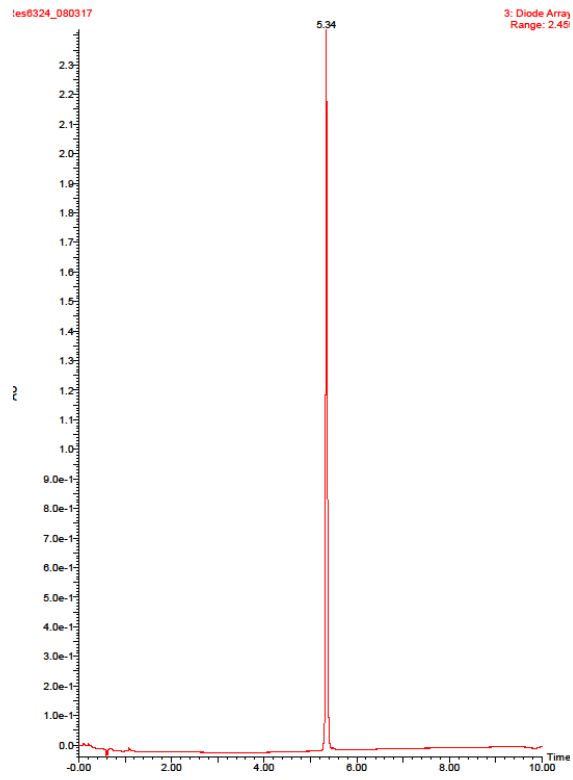
R5 calculated mass = 24525.17

²CCAGGAAGCCATCGGATGCAAAGATGATAGGGTTATCTGGCAGGCGCGGATCGGTAATAAC
AAAGTTTTTTTCAATCA



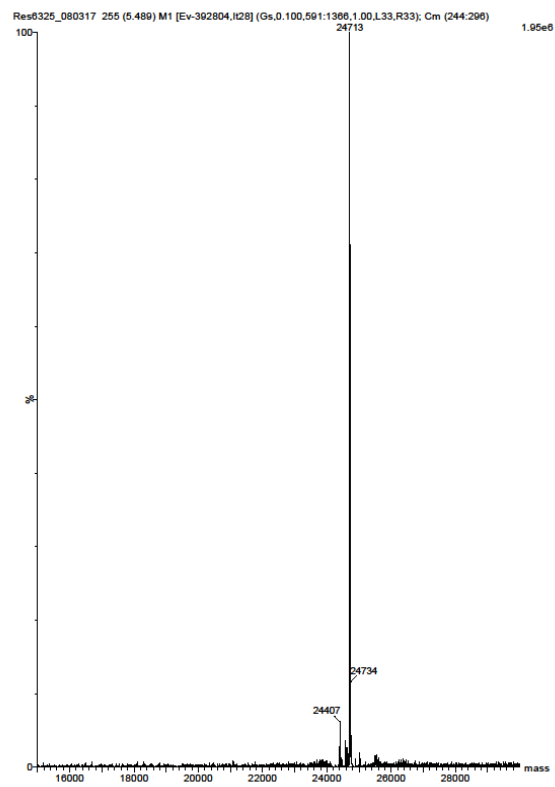
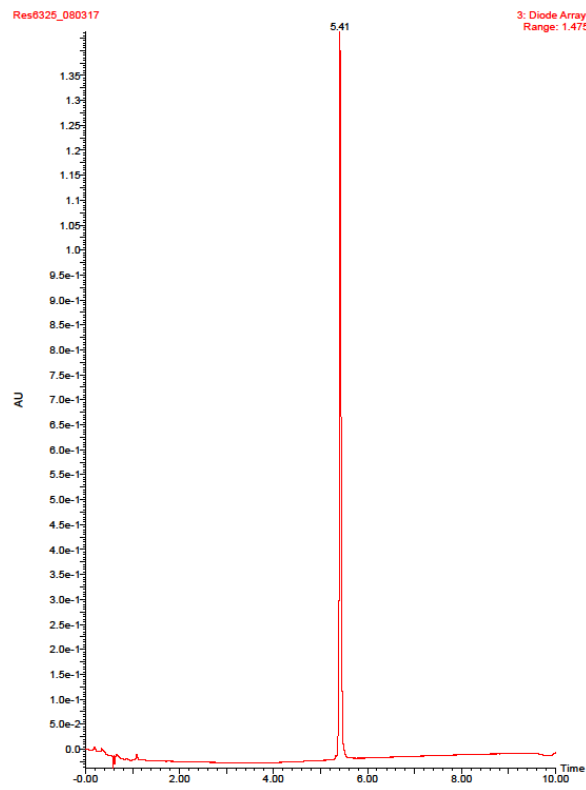
^mcF1 calculated mass = 15745

P_{TATGATTGAAAAAACTTTGTTATTACCGATC}^mCG^mCGCCTGCCAGATAACCC^K



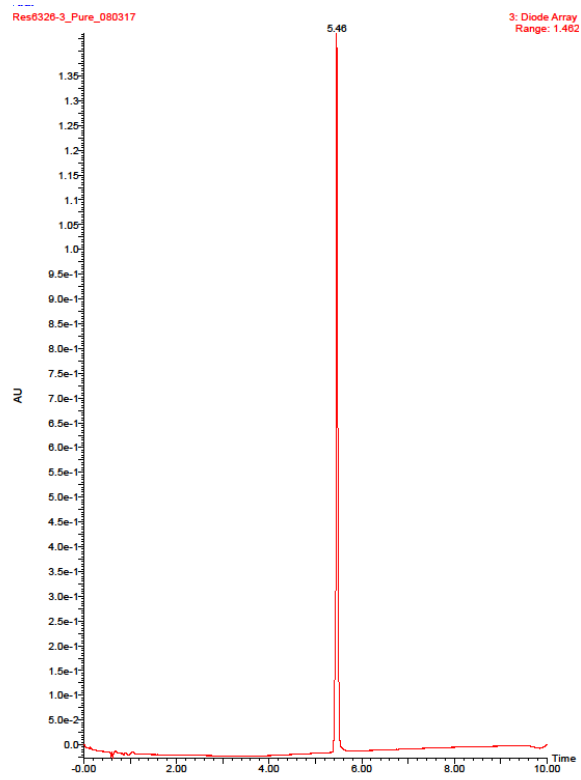
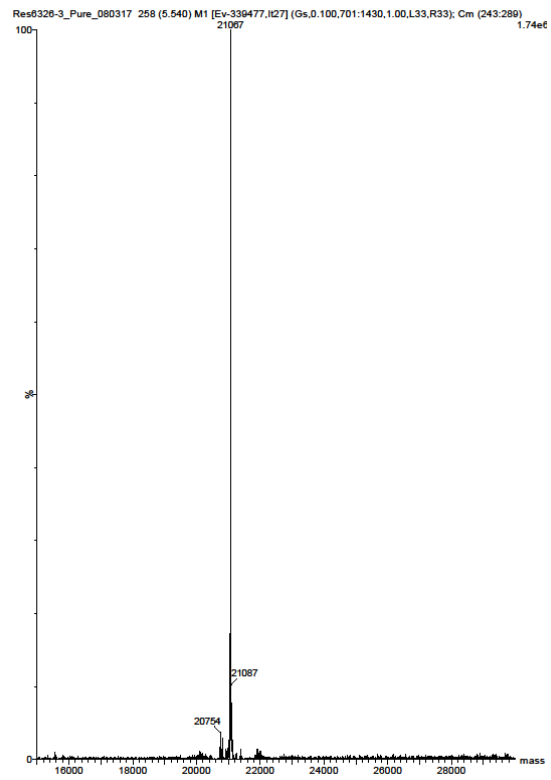
^mcF4 calculated mass = 24712

ZTATT^mCG^mCGACCAGCGTGAAACGACCGTTCAGCTGATCAACTATACCAAAG
CGGTAAAAATTTTGAATTTGTTACACC^K



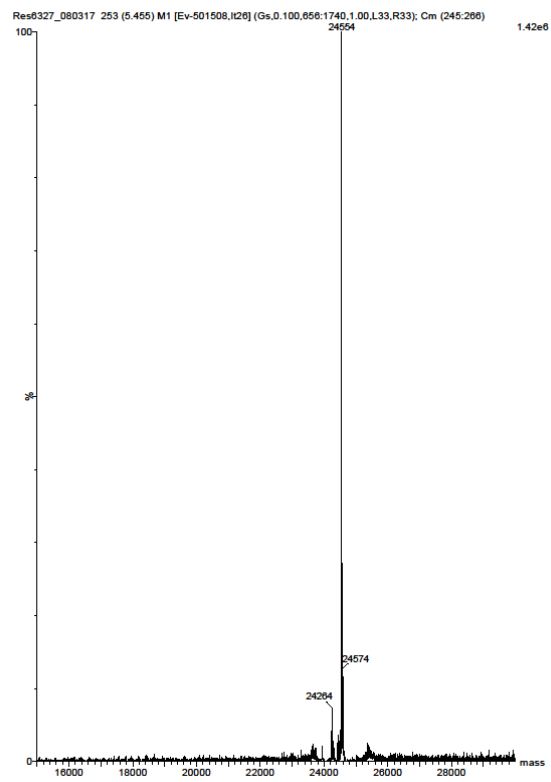
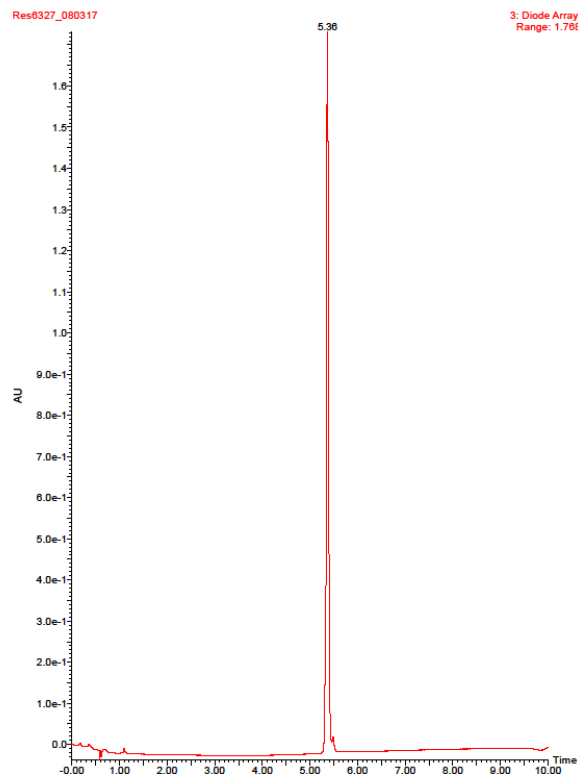
^mcR3 calculated mass = 21066

Z⁺TGAACGGTCGTTTCACGCTGGT^mCG^mCGAATAGCGTCACGAATCTTTTGAACAG TAGCCTGGTC GGTTTC^K



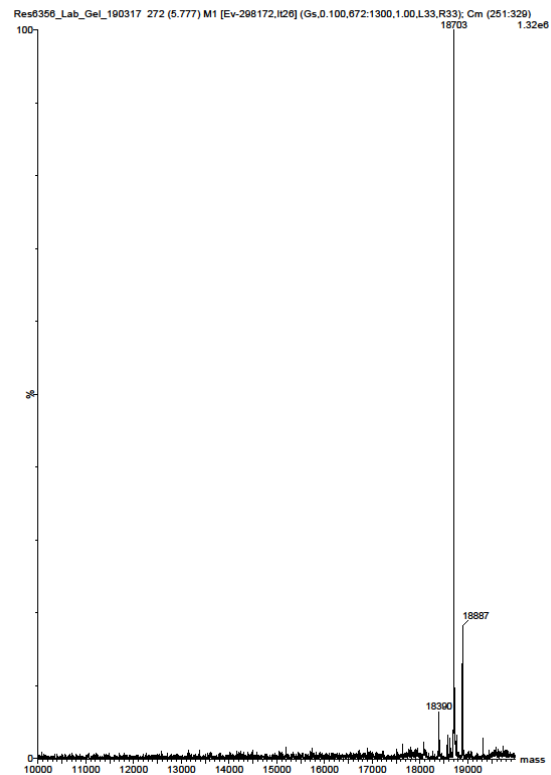
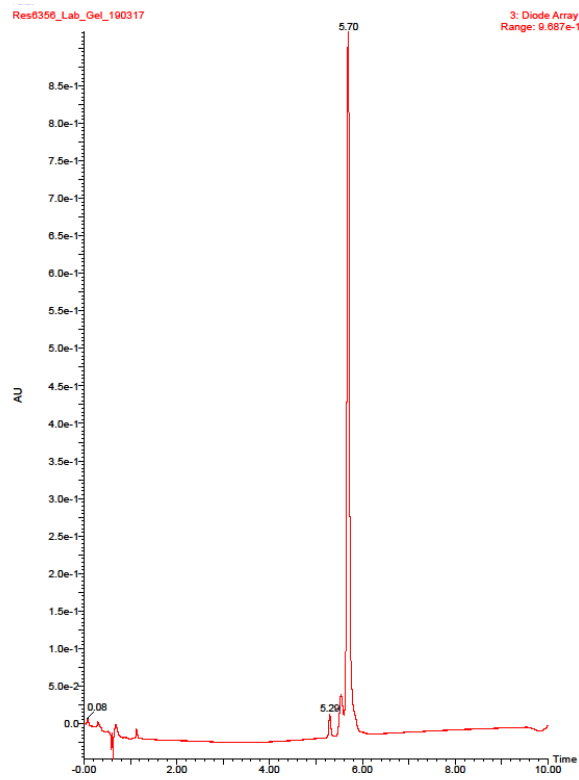
^mcR5 calculated mass = 24553

^ZTCCAGGAAGCCATCGGATGCAAAGATGATAGGGTTATCTGGCAGG^mCG^mCGGATC
GGTAATAACAAAGTTTTTTTCAATCA



fluo R1 calculated mass = 18704

P AATTCCACATGATCGGATCCATCTAACXGAACCCCAATAAAGTATTGCAGCXCGCC^K



fluo F5 calculated mass = 24660

²TTCAGCCGGTGCGTGAYCAGAAAGGCGAGCTGCAATACTYTATTGGGGTTC
AGTTAGATGGATCCGATCATGTGG

