



Spatiotemporal variations in rainfall and temperature in Ghana over the twentieth century, 1900-2014

Tawia Abbam^{1*}, Fiifi Amoako Johnson², Jadu Dash³, Sabu S. Padmadas²

¹Department of Social Statistics and Demography, Faculty of Social, Human and Mathematical Sciences, University of Southampton, UK, ²Department of Social Statistics and Demography & Centre for Global Health, Population, Poverty and Policy (GHP3), Faculty of Social, Human and Mathematical Sciences, University of Southampton, UK, ³Geography and Environment, Faculty of Social, Human and Mathematical Sciences, University of Southampton, UK

* Correspondence to:

Tawia Abbam

Building 58 Room 1021

University of Southampton

SO17 1BJ

T.Abbam@soton.ac.uk

This article has been accepted for publication and undergone full peer review but has not been through the copyediting, typesetting, pagination and proofreading process which may lead to differences between this version and the Version of Record. Please cite this article as doi: 10.1002/2017EA000327

Abstract Climate-dependent subsistence agriculture remains the main livelihood for most populations in Ghana. The spatiotemporal variations in rainfall and temperature have influence particularly in poorly developed agrarian regions with limited or no irrigation infrastructure. Therefore, a systematic understanding of climate patterns across space and time is important for mitigating against food insecurity and household poverty. Using over a century of high-spatial resolution data, this study examines the spatiotemporal variations in rainfall and temperature across Ghana to identify climate-stressed locations with potential effect on the production of major staple crops. The data for the analysis were drawn from the University of Delaware's Gridded Precipitation and Temperature Monthly Climatology version 4.01. The analysis was restricted to the main crop-growing periods (March to December). The Mann-Kendall nonparametric regression test was used to examine significant changes in rainfall variability and temperature at the district level. The results show that Ghana's climate has become progressively drier over the last century and prone to drought conditions. The most climate-stressed districts are clustered within the three northern regions (Upper West, Upper East and Northern) and the Western region. The most recent census in Ghana shows that the three northern regions also have the highest prevalence of subsistence agriculture. The findings from this study have implications for targeted interventions such as the Ghanaian government's recent policy initiative aimed at alleviating rural poverty by encouraging youth participation in agriculture along with efforts to intensifying crop production using modern farming techniques.

Key Points

- Ghana's climate has become progressively drier over the last century. The temperature has increased significantly across Ghana whilst rainfall has declined mainly in the northern and southwestern parts of the country.
- The regions with high prevalence of subsistence agriculture are those experiencing significant increases in temperature and decreases in rainfall.
- Variability in total annual rainfall has declined significantly towards the northern part of the country and around the Volta Lake.

Key words: Climate variability; Rainfall; Temperature; Subsistence agriculture; Spatial; Spatiotemporal variation; Ghana

Accepted Article

1. Introduction

Rainfall and temperature are key climatic drivers for agricultural production. The variations in the amount of rainfall and temperature across space and time can significantly influence agricultural yields, which in turn can have a substantial effect on food security and household income. This is particularly the case in most parts of Africa, including Ghana, where climatic conditions continue to threaten agricultural production, as well as the livelihoods of people living in poor and marginalised rural communities [Barrios *et al.*, 2008; Cooper *et al.*, 2008; Roudier *et al.*, 2011; Antwi-Agyei *et al.*, 2012].

Agriculture is an important sector for social and economic development in Ghana. About one-half of Ghanaian households are engaged in the agricultural sector, contributing to 22 percent of the country's Gross Domestic Product [Ghana Statistical Service, 2014; Kayode *et al.*, 2014]. The dependence on agriculture in Ghana varies considerably by geographical regions and rural-urban areas. According to the 2010 population and housing census, 76.1 percent of rural households are engaged in agricultural activities [Kayode *et al.*, 2014]. At the regional level, 84 percent of households in the Upper East region are engaged in agriculture compared to only 7 percent in Greater Accra [Kayode *et al.*, 2014]. More than 95 percent of agricultural households in Ghana are engaged in crop farming [Kayode *et al.*, 2014]. Agriculture in Ghana is mostly on a subsistence basis, with about 90 percent of farm-holdings being less than two hectares [MoFA, 2015]. Of the 7.8 million hectares of agricultural land under cultivation, only 0.4 percent is irrigated, with the remaining 99.6 percent dependent on rainfall [MoFA, 2015].

High night-time temperatures of 32°C compared to 27°C could decrease rice yields by 90 percent, and under drought conditions (below two standard deviations of the mean total annual rainfall) maize yields could fall by 1.7 percent for each degree-day spent

above 30°C [Thornton et al., 2014]. Rowhani et al., [2011] showed that a simultaneous increase in mean temperatures and decrease in rainfall results in reducing maize, sorghum and rice yields. Households engaged in agricultural activities are usually the most vulnerable in terms of coping with crop production losses attributed to uncertainty in rainfall and temperature [Wossen and Berger, 2015]. However, the measurement of rainfall and temperature and related uncertainty can be methodologically challenging in terms of availability, type and quality of robust spatial and socioeconomic data.

There is evidence to suggest that traditional societies relied on local knowledge to predict rainfall and temperature patterns, however, due to the rapidly changing climate, this is no longer effective, thus increasing the vulnerability of farmers to climate stressors such as droughts, floods and timing of rainfall [Thornton et al., 2014]. Whilst there are many technological innovations and interventions including effective irrigation systems for enhancing agricultural production, they are out of financial reach for most Ghanaian smallholder farmers who rely solely on essential rainfall and temperature for crop production [Thornton et al., 2014]. Therefore, understanding the variability in the quantity and timing of rainfall and temperature is important for predicting crop yields for smallholder farmers.

There are very limited studies that examine climate trends in Ghana. Previous studies that have analysed the spatiotemporal variations in rainfall and temperature have used station-level data with a sparse geographical mix, yielding low spatial coverage, inconsistent and missing data across space and time [Le Barbé et al., 2002; Endreny and Imbeah, 2009; Oduro-Afryie and Adukpo, 2009; Owusu and Waylen, 2009; Arku, 2012; Lacombe et al., 2012; Nkrumah et al., 2014]. Le Barbé et al.,'s study (2002) of West Africa analysed mean annual rainfall from 300 gauges over an area of 1700000km² to measure the occurrence rate and magnitude of convective storms between 1950 and 1990. Whilst their results concurred with previous studies showing a decline in rainfall

from the 1970s, the selected network of gauges did not cover Ghana. However, using annual maximum rainfall from satellite precipitation bins and eight gauges [Endreny and Imbeah, 2009]; standardised deviation of mean annual rainfall derived from 30 monthly rainfall gauges [Oduro-Afryie and Adukpo, 2009]; and mean annual rainfall and standard deviation derived from 15 stations [Owusu and Waylen, 2009]; studies have confirmed similar patterns of declining rainfall and rainfall variability over Ghana from the 1970s. Most of these studies used interpolated station data due to the sparsely-distributed network of gauges providing continuous data (daily, monthly, yearly), and national level analyses covered only limited time periods (mostly between 1950 and the present day). These periods also correspond with the mid-twentieth century onset of extreme global temperature rise in response to high levels of greenhouse gases, however, it is unclear whether the results suggest climate change or climate variability.

Arku's study [2012] used data between 1966 and 2005 with a subset period of 1981 and 2000, and concluded that there has not been a continuous period (of at least ten years) of either positive or negative change and hence there was no change in climate. National analyses often mask the spatiotemporal variations in rainfall and temperature at the small geographic level. On the other hand, micro-level analysis of districts and regions focus on intra-regional variations, with little or no systematic intra- and inter-regional comparisons [Geografisk, 1997; Neumann et al., 2007; Owusu et al., 2008; Nyatuame et al., 2014; Issahaku et al., 2016]. Issahaku et al.'s study [2016] of rainfall and temperature variation in the Upper East region of Ghana from 1954 to 2014 used monthly average temperature and average annual rainfall station data to find increases in day and night time temperatures and decreases in rainfall. However, the aggregation of the data masked out the local variations between districts and agro-ecological areas.

The goal of this research is to investigate the spatiotemporal variations in rainfall and temperature across Ghana and identify locations with multiple climatic stresses on

crop producing areas using historical long-term datasets dating back to more than 100 years (1900-2014). In this research, climatic stress is defined by significant increases or decreases in rainfall and/or temperature at over the period of the dataset.

To understand the potential effects of the changes in rainfall and temperature on crop production we considered the main crop growing months (March to December) of major staple crops in Ghana, including maize, rice, sorghum, cassava, millet and yam [MoFA, 2015]. We analyzed the mean, minimum and maximum annual temperature and the total and standard deviation of the annual rainfall using a seven-year moving-average window [Jones and Thornton, 2003; Thornton et al., 2009, 2014; Rowhani et al., 2011; Amikuzuno and Donkoh, 2012; Issahaku and Maharjan, 2013]. These measurement indicators enable us to conduct a systematic assessment of the quality and quantity of crop production and the likelihood of drought and flood conditions.

2. Study Area

Ghana is located on the Gulf of Guinea in West Africa covering 23,884,245 hectares of land and water area between latitudes 4°N and 11°N and longitudes 4°W and 2°E [Nkrumah et al., 2014; MoFA, 2015]. The country is demarcated into 10 regions and 216 districts, covering five broadly categorised agro-ecological (Coastal Savannah, Evergreen, Deciduous Forest, Transitional and Savannah) zones (Figure 1). The 2010 Ghana Population and Housing Census (GPHC) enumerated 24,658,832 people across the whole country [Ghana Statistical Service, 2013].

The three northern regions (Upper West, Upper East and Northern), which are predominantly agro-ecologically Savannah, are the most sparsely inhabited, constituting 41 percent of the total land area but only 17.1 percent of the population. Over three-quarters of households in these regions (Upper West – 77.1 percent, Upper East – 83.7 percent and Northern – 75.5 percent) are engaged in subsistence agriculture [Kayode et al., 2014]. The three regions are the most poorly-developed regions in terms of extreme poverty incidence [Online et al., 2010]. Ashanti, Brong

Ahafo and Eastern regions, which are mainly Transitional and Deciduous Forest areas producing cocoa, timber and minerals, constitute 19.4 percent, 9.64 percent and 10.7 percent of the national population, respectively [Kayode *et al.*, 2014]. The share of agricultural activities is also high in these regions: Ashanti (36.6 percent); Brong Ahafo (68.5 percent) and Eastern (59.2 percent) [Kayode *et al.*, 2014].

Western region is mostly Evergreen and Deciduous Forest, and highly economically-active with a vibrant harbour, several large- and small-scale mines and offshore oil fields [Online *et al.*, 2010]. About one-half of households in the region are directly engaged in agricultural activities. Greater Accra (predominantly Coastal) and Ashanti (predominantly Deciduous Forest) are the most developed and urbanised regions in the country, with 16.3 percent and 19.4 percent of the national population, respectively and the lowest in terms of agricultural activity (Greater Accra – 6.6 percent, Ashanti – 36.6 percent). The Volta region cuts across three agro-ecological (Coastal, Deciduous Forest and Savannah) zones. It constitutes 8.6 percent of the population and is made up of subsistence agriculture (58.8 percent of households) and fishing communities [Kayode *et al.*, 2014]. Central region, primarily Deciduous Forest and Coastal, is the fourth poorest region and constitutes 8.9 percent of the population, with fishing and agriculture as the main economic activities [Online *et al.*, 2010; Kayode *et al.*, 2014].

The mean annual temperature varies from 26.1°C at the southwest coast of Western region to 28.9°C at the northeast border of the Upper East, but can reach up to 40°C in the northeast [MoFA, 2015]. Conversely, mean annual rainfall varies from approximately 1000mm in the northeast border of the Upper East region to 2200mm in the southwest coast of Western region. The coastal zone is an arid area experiencing only mean annual rainfall of 800mm [MoFA, 2015]. The three northern regions, with the highest dependence on subsistence agriculture, experience the second lowest amount of rainfall (annual average of approximately 1000mm) and the highest temperatures (annual average of 28.9°C) [MoFA, 2015]. Brong Ahafo, Ashanti, Eastern,

Central and Volta regions, also with high dependence of subsistence agriculture, experience a mean annual rainfall of 800mm to 1,500mm and mean annual temperatures of 26.4°C [Ghana Statistical Service, 2012, 2012, 2012, 2012; GSS, 2013].

Given the high dependence on subsistence agriculture in Ghana and the high spatial variations in rainfall and temperature, there is a dire need to understand the spatiotemporal variations in rainfall and temperature at sufficient spatial resolution and identify climate stressed localities.

[---Figure 1 about here---]

3. Data

The data for the analysis are derived from the University of Delaware's Gridded Precipitation and Temperature Monthly Climatology version 4.01 (UoD PTMC). The UoD PTMC version 4.01 data are extracted using 12,857 air-temperature and 17,721 precipitation stations across the world. Due to the uneven spread and geographically-disperse nature of weather stations, Climatologically Aided Interpolation (CAI) procedures were used to interpolate monthly rainfall and temperature averages to a 0.5 degree by 0.5 degree of latitude/longitude grid [Matsuura and Willmott, 2015]. The CAI uses an enhanced distance-weighting method that reduces cross-validation errors. Cross-validation of spatial and station-by-station data is carried out to check interpolation errors and to reduce network biases on cross validation results. The results of *Manzanas et al.*, [2014], who use a quality-controlled dataset consisting of 14 gauges from the Ghana Meteorological Agency (GMet) as a reference for the period from 1961-2010, support the use of the gauge-based UoD PTMC product. The UoD product does not correct for undercatch bias correction, however, research shows that accounting for rain gauge undercatch may not be important in Africa [Maidment et al., 2014]. Furthermore, other analyses have shown that mathematically correcting for rain gauge undercatch bias produces similar results of annual and seasonal mean rainfall [Schneider et al., 2014].

The advantage of the UoD PTMC version 4.01 is the availability of high-spatial resolution data and longer temporal records with no missing observations (available for researchers at no cost). The data for the analysis consist of monthly rainfall and temperature averages from 1900 to 2014. In total five variables were derived:

- i. total annual rainfall (sum of monthly rainfall averages),
- ii. rainfall variability (standard deviation of a moving seven-year window of the total annual rainfall),
- iii. mean minimum annual temperature (mean of the monthly minimum temperatures),
- iv. mean annual temperature (mean of the monthly temperatures), and
- v. mean maximum annual temperature (mean of the monthly maximum temperatures).

The analysis was restricted to the months March to December to coincide with major cropping period.

To examine the changes in temperature, the minimum and maximum monthly temperatures were extracted for each grid (122 grids in total) by year and the mean annual temperature was computed for the months March to December for each grid. All three indicators were analysed due to their importance for crop growth [*Jones and Thornton, 2003; Thornton et al., 2009, 2014; Rowhani et al., 2011; Amikuzuno and Donkoh, 2012; Issahaku and Maharjan, 2013*]. The total rainfall and the standard deviation of the total rainfall for March to December was computed for each grid by year. West African rainfall variability operates on three dominant time scales: multi-decadal (>20 years), quasi-decadal (8-18 years) and interannual (2-8 years) [*Dieppois et al., 2015*]. A number of studies [*Opoku-Ankomah and Cordery, 1994; Koranteng and McGlade, 2001; Owusu and Waylen, 2009; Mawunya et al., 2012*] have shown a link between sea surface temperatures, rainfall and El Niño–Southern Oscillation (ENSO) (which operates on a 4-7 year cycle) across Ghana. In order to identify any break

periods that indicate a shift in rainfall trends, we chose the finer resolution interannual time scales, which also correspond to the ENSO cycle. To calculate rainfall variability, the standard deviation of total annual rainfall was calculated using a moving window to smooth out irregularities and capture the overall direction of the trend. Moving windows of analysis of 4, 5, 6 and 7 years were tested on annual rainfall using the `(runsd(df, year))` function in R programming language, and the seven-year window showed the strongest line of best fit. The computation of 108 standard deviations (1900-1906, 1901-1907, 1902-1908...2008-2014) was performed. The Mann-Kendall trend test was then applied to these values (`mk.test(x)`) in order to test the trend in variability over time.

4. Methodology

To examine interannual and decadal variability in total rainfall over the study period, the Lamb Index [Kouakou *et al.*, 2016] was used. The Lamb index I_i determines whether precipitation in a given year of the study period is excess, normal or deficit. The index is computed using equation (1),

$$I_i = \frac{P_i - P}{\sigma} \quad (1)$$

where I_i is the Lamb index for year i , P_i is the value of the annual rainfall of the year i , and P and σ are the average rainfall and standard deviation computed over the study period. I_i greater than 0.5 is classified as excess rainfall, I_i between -0.5 and 0.5 is classified as normal rainfall, whilst I_i less than -0.5 is classified as deficit rainfall. In addition, in order to assess inter-decadal variability in mean annual rainfall and mean annual temperatures over the study period, the decadal means and the decadal mean ratios were computed. The decadal mean ratios were evaluated by using the period 2005-2014 as the reference period, with ratios less than 1 signifying a deficit in either recent rainfall or temperature. Ratios greater than 1 signify an increase in either recent

rainfall or temperature.

The Mann-Kendall nonparametric regression test was used to examine significant changes ($p < 0.05$) in rainfall variability (total and average seven-year moving window standard deviation), and temperature (mean, minimum and maximum) [Lacombe *et al.*, 2012]. The Mann-Kendall nonparametric regression analyses the sign of the difference between the later-measured observation and all earlier-measured observations. This results in a total of $n(n - 1)/2$ possible pairs of data, where n is the total number of observations:

$$\text{Let } \theta = y_{i+1} - y_i \quad (2)$$

where y_i is observation at time i and θ is the difference between the observations at time i and time $i + 1$. The test statistic S is then given by (3), the sum of the integers,

$$S = \sum_{i=1}^{n-1} \sum_{j=i+1}^n \text{sgn}(y_{i+1} - y_j) \quad (3)$$

where n is the number of observations and $\text{sgn}(\theta)$ is given by (4),

$$\text{sgn}(\theta) = \begin{cases} 1 & \text{if } \theta > 0 \\ 0 & \text{if } \theta = 0 \\ -1 & \text{if } \theta < 0 \end{cases} \quad (4)$$

The mean of S is $E[S] = 0$ and the variance σ^2 is

$$\sigma^2 = \{n(n - 1)(2n + 5) - \sum_{i=1}^p t_{i+1}(t_{i+1} - 1)(2t_{(i+1)+5})\}/18 \quad (5)$$

where p is the number of the tied groups in the data set and t_{i+1} is the number of data points in the $i + 1$ th tied group. Tied groups refers to observations in the dataset that have the same values.

A large positive value of S indicates an increased trend and a large negative S indicates a decreased trend, whereas a small S is an indication of no trend. To test for significant changes over time a τ test statistic with a range of -1 to +1 is calculated

$$\tau = \frac{S}{n(n-1)/2} \quad (6)$$

where both s and τ are significantly different from zero ($p < 0.05$), then this is an indication of a significant change in rainfall and temperature. The p-value is calculated as in Warren and Gilbert, [1988] pp. 209-213 for $n > 40$. We considered areas with significant ($p < 0.05$) changes in rainfall or temperature as climate-stressed.

5. Results

5.1. Temporal variations in rainfall

Over the last century, Ghana's climate during the crop-growing seasons has become drier and more prone to drought conditions. Based on the Mann-Kendall non-parametric regression on data from 1900 to 2014, the mean annual rainfall and rainfall variability in the growing seasons have declined significantly, $p=0.014$ and $p=0.002$, respectively. The decadal mean has declined from a high of 1308mm in the 1960s to 1147mm for the period 2005-2014. The decadal mean ratios show that the current climate (2005-2014) is the driest and that there was a significant wet period in the 1960s. The ratio of mean decadal precipitation between 2005-2014 and 1960-1969 is 0.88 indicating a comparative deficit in recent rainfall. Analysis of rainfall indices shows that mean annual rainfall in the growing season of Ghana's major staple crops is characterised by high interannual variability of rainfall at the national scale (Figure 2). Two major rainfall periods can be identified: an excess period from 1900 to 1970, where the estimated Lamb rainfall indices are generally both positive and in excess, suggesting a wet climate prone to heavy rains and floods (1969 and 1964 are the wettest years in the index). The second period, from the 1970s is marked by a sudden

shift to a drier climate with rare years in excess (1980, 1990, 1992, 2000 and 2008 only). The estimated Lamb rainfall indices are generally negative, indicating a tendency towards drought (25 of the last 45 years have been in rainfall deficit), particularly in the years 1978, 1983, 1984, 1991, 1993, 1999 and 2002.

[---Figure 2 about here---

5.2. Temporal variations in temperature

Mean, minimum and maximum temperatures have all increased significantly over time ($p=0.017$, $p=0.012$ and $p=0.022$, respectively). The mean decadal temperature has increased by 0.6°C from 26.8°C (1900-1910) to 27.4°C (2006-2015). The first half of the twentieth century (1900 to 1950) is characterized by multi-decadal oscillations in the mean temperature (Figure 3), followed by a prolonged drop in the decadal mean temperature from the 1940s (26.9°C) of 0.2°C to 0.3°C respectively throughout the 1950s (26.7°C) and 1960s (26.6°C). The shift towards the current warmer climate commences in the 1970s. Since 2000 the mean annual and decadal temperatures have consistently been in excess of 27°C , prior to which the mean decadal temperature peaked at 26.9°C in the 1940s. Figure 3 clearly shows that from the 1970s, Ghana has been experiencing increasing temperature coupled with decreasing total rainfall.

[---Figure 3 about here---

5.3. Spatial variations in total rainfall and rainfall variability

Figure 4 shows that total annual rainfall has declined significantly in the Upper West, Upper East and Western regions as well as in the districts of Northern region that border the Upper West and Upper East. In the Upper West, the mean decadal rainfall from 1900 to 1909 was 1122mm but declined to 1068mm between 1950 and 1959, and further declined to 964mm between 2005 and 2014. The Upper West experienced significant decreases ($p<0.05$) in total rainfall as well as in rainfall variability in all

districts (Figure 4). In the Upper East, the decline in total rainfall was mainly observed from the 1960s. Between 1950 and 1959, the mean decadal rainfall was 1081mm but declined to about 979mm between 2005 and 2014. In the Upper East region, all the districts except Pusiga experienced either a significant decline in total rainfall or rainfall variability or both. Builsa North, Builsa South, Kasena Nankana East and Kasena Nankana West districts experienced significant declines in total annual rainfall only; Bawku and Binduri districts experienced significant declines in rainfall variability only, whilst Bawku West, Bolgatanga Municipal, Bongo, Garu Tempene, Nabdam and Talensi districts experienced significant declines in both. In Northern region, Bunkpurugu Yunyoo, East Mamprusi, Mamprugu Moagduri, Sawla-Tuna-Kalba and West Mamprusi districts observed both significant declines in total annual rainfall and rainfall variability; Chereponi district experienced a significant decline in total annual rainfall whilst Kumbungu and North Gonja districts experienced significant declines in rainfall variability (see Figure 5).

In Southern Ghana, significant declines in total rainfall was observed mostly amongst districts in Western region – which has been experiencing a decadal average decline in total rainfall since the 1960s from 1716mm between 1960 and 1969 to 1374mm between 2005 and 2014. Twelve out of the 22 districts in Western region experienced significant declines in total annual rainfall. However, only Bia East experienced significant declines in both total annual rainfall and rainfall variability. The only district to experience significant decline in both total annual rainfall and rainfall variability in the region of Brong Ahafo was the Asunafo North Municipal district. However, neighbouring districts to Asunafo North Municipal experienced significant declines in rainfall variability. Although localities around the Volta Lake did not experience significant declines in total annual rainfall, they did experience significant declines in rainfall variability. Significant increase in rainfall variability was observed only in the districts of Abura-Asebu-Kwamankese, Cape Coast Metropolis, Ekumfi and Mfantsiman in Central region.

[---Figures 4 and 5 about here---]

5.4. Spatial variations in the mean, minimum and maximum temperatures

Figure 6 shows significant increases in mean, minimum and maximum temperatures in most parts of Ghana. The districts that have not experienced significant increases in mean temperature were concentrated in the Upper East, Upper West and Volta regions. Similar spatial patterns were observed for minimum temperatures in addition to districts in Brong Ahafo and Western regions. All districts except a few in Ashanti and Volta regions have experienced significant increases in maximum temperature.

Examining decadal averages from 1900 to 2014, the results shows that the largest increase in mean temperature of 1.34°C (from 26.03°C between 1900 and 1909 to 27.37°C between 2005 and 2014) was recorded in Greater Accra. The smallest increases in mean temperature were recorded in the three warmest regions (Upper West [1900–1909 = 27.67°C, 2005-2014 = 28.04°C, $\Delta = 0.37^\circ\text{C}$]; Upper East [1900–1909 = 28.19°C, 2005-2014 = 28.77°C, $\Delta = 0.58^\circ\text{C}$]; and Northern [1900–1909 = 27.74°C, 2005-2014 = 28.32°C, $\Delta = 0.58^\circ\text{C}$]). The results show that as we move from the warmer northern climate to the cooler climate of the South the increase in mean temperatures becomes larger.

[---Figure 6 about here---]

5.5. Spatial intersection between total annual rainfall, rainfall variability and mean temperature

To identify potential climate stressed areas we examine the spatial intersection between total annual rainfall, rainfall variability and mean temperature (Figure 7). We grouped them into four broad categories: (a) decrease in rainfall ($p < 0.05$) and no change in temperature; (b) increase in temperature ($p < 0.05$) and no change in rainfall; (c) decrease in rainfall ($p < 0.05$) and increase in temperature ($p < 0.05$); (d) no significant

change in temperature or rainfall. The results show that most parts of Ghana are climate-stressed. The Upper West showed a significant decline in rainfall, whereas the districts in the north of Northern region comprise one of the highly-susceptible areas showing a decline in rainfall and an increase in temperature. Bunkpurugu Yunyoo, East Mamprusi, West Mamprusi and Mamprugu Moagduri districts in Ghana's Northern region have experienced significant decreases in total annual rainfall and significant increases in mean temperature (c) plus significant declines in rainfall variability. These changes were also observed for Garu Tempene and Bawku West districts in the Upper East, Wa East district in the Upper West, Bia East district in Western region and Asunafo North Municipality in Brong Ahafo. Although a number of districts in the western area of Western region (Jomoro, Sefwi Akontombra, Sefwi Bibiani-Ahwiaso Bekwai, Sefwi Wiawso, Aowin, Suaman, Bodi, Juabeso, Wassa Amenfi West and Wassa Amenfi Central) and Chereponi district in Northern region have also experienced significant decreases in total annual rainfall and increases in mean temperature (c), they did not observe significant changes in rainfall variability.

Kasena Nankana West, Kasena Nankana East, Builsa South and Builsa North districts in the Upper East and Bia West district in Western region recorded significant decreases in total annual rainfall but no significant change in mean temperature (a). Similar results were found in Bolgatanga Municipal, Bongo, Talensi and Nabdam districts in the Upper East, Wa Municipal, Jirapa, Sissala West, Lambussie Karni, Wa West, Sissala East, Nadowli-Kaleo, Daffiama Bussie, Lawra and Nandom districts in the Upper West and Sawla-Tuna-Kalba districts in Northern region. However, these districts experienced significant decreases in rainfall variability in addition.

Furthermore, the results show that large parts of Ghana experienced significant increases in mean temperature but no change in total annual rainfall (b) nor a change in rainfall variability, except for Bawku Municipal and Binduri districts in the Upper East, North Gonja and Kumbungu in Northern region and Dormaa East, Berekum Municipal,

Dormaa West and Dormaa Central Municipality in Brong Ahafo. It is interesting to note that only the districts around the Volta Lake experienced significant declines in rainfall variability with no significant change in temperature or rainfall (d). The coastal districts of Abura-Asebu-Kwamankese, Cape Coast Metropolis, Mfantiman and Ekumfi in Central region experienced a significant increase in mean temperature and an increase in rainfall variability.

[---Figure 7 about here---]

6. Discussion

Using gridded climate data, this study systematically analysed the historical changes in temperature and rainfall in Ghana and identified climate-stressed localities that may have a potential effect on crop production. Our study is the first of its kind to examine the spatial intersection between total annual rainfall, rainfall variability and temperature at the national level in Ghana. The results of the study are consistent with previous subnational-level analysis [Ofori-Sarpong and Annor, 2001; Neumann *et al.*, 2007; Issahaku *et al.*, 2016], national studies [Geografisk, 1997; Paeth and Hense, 2004; Oduro-Afriyie and Adukpo, 2009; Owusu and Waylen, 2009; Arku, 2012; Lacombe *et al.*, 2012; Nkrumah *et al.*, 2014], and regional-level results [Giannini *et al.*, 2008], although none of these has examined the spatial interaction of all three indicators: total rainfall, rainfall variability and temperature. However, it is important to note that the effect of these indicators on crop yield are not independent [Issahaku and Maharjan, 2013].

This research is timely given that the Government of Ghana has recently prioritised agriculture as one of the key sectors for development with the aim of alleviating poverty through modernisation and improved productivity [Ministry of Finance, 2017]. The Government's strategy includes the provision of improved seeds, dams, extension services, supply of fertilisers, marketing and e-agriculture as well as encouraging youth participation in the sector. The findings of this study provide rich information on

climate-stressed areas affected by variations in rainfall and temperature across space and indicators for food production interventions and effective allocation of agricultural resources.

The findings clearly establish evidence that districts in the Upper West, Upper East, Northern and Western regions are the most climate-stressed areas in Ghana. These districts in the last 115 years have experienced significant and different patterns of declines in rainfall, rainfall variability and increases in temperature. The results show that most parts of Ghana experienced significant increases in temperature but not in rainfall or rainfall variability. The largest increase in temperature was observed in the cooler southern parts (Greater Accra, Central and Eastern regions) of the country, whilst the changes were smaller in the warmer northern parts of the country. It is interesting to note that the districts of Abura-Asebu-Kwamankese, Cape Coast Metropolis, Ekumfi and Mfantsiman in Central region were the only districts to experience a significant increase in rainfall variability. Another interesting finding from the study was that although most districts in close proximity to the Volta Lake did not experience significant changes in total rainfall or temperature, they did experience significant declines in rainfall variability.

In the three northern regions (Savannah agro-ecological zone) where we have identified significant declines in total annual rainfall, rainfall variability and increase in temperature, there could be a potential negative effect on millet, sorghum and yam yields, which are important staples in the region. Crop models have been used to simulate sorghum and millet yield changes under 35 possible future climate conditions (combinations of -20% to 20% precipitation anomalies and +0 to 6°C temperature anomalies) in West Africa [Sultan *et al.*, 2013; MoFA, 2015]. Simulation results showed that in almost all cases (31/35) yields were negatively-affected and that when warming increased beyond +2°C, a change in rainfall no longer counteracted the negative effect warming is known to have on yields. In the Evergreen and Deciduous Forest agro-

ecological zones of Western region, most districts experienced declines in rainfall and increases in temperature. There could be a potential reduction in rice yields in these zones as a result, whilst at the same time research shows that warming could benefit maize yields [Thornton *et al.*, 2009]. Additional evidence demonstrates that these changes could result in a reduction in yam yields but may increase maize and cassava yields [Amikuzuno and Donkoh, 2012; Issahaku and Maharjan, 2013, 2014].

7. Conclusions

These results clearly demonstrate that the pattern of changes in rainfall and temperature is spatially-heterogeneous, and mitigating these effects would require developing a local-scale adaptation policy. Given the findings from this study, it is important that further research is undertaken to examine how the changes, especially at the intersection of rainfall, rainfall variability and temperature variations, have affected crop production in Ghana and the resultant effects on the livelihoods and wellbeing of the population, particularly marginalised rural communities mainly dependent on subsistence agriculture. This will help the government to design and implement targeted interventions linking agricultural sectors with other development sectors.

8. Data Limitations

The UoD PTMC v4.01 product has some limitations. The dataset's accuracy is dependent upon the spatial coverage of the station-record network, and relies on the background climatology in station-sparse areas. The GHCN documents records from 18 data stations 1973-2017. However, there is no detail on the longevity and consistency of the records.

Nevertheless, the product has been verified against other global-gridded products such as the CRU, GPCC and UDEL (UoD) datasets over China in Sun *et al.*, [2014], and the CRU, ETH, and CHCAM data sets over the European alpine region in Efthymiadis *et al.*, [2006]. These studies show that prior to the 1920s-1930s the global station records

were sparser and, whilst there are differences between the datasets' temporal scale results, the trends are the same.

The scope of the paper did not encompass the correction of the precipitation records for cross validation errors. Over Ghana cross-validation errors range over space and time (months) between 0 (mm) and 50 (mm) [Matsuura and Willmott, 2015].

Despite these limitations, the results of this paper's analysis of the long-term cumulative changes in climate support the existing body of evidence that shows the break in rainfall regime in the 1960s-1970s and the decline in rainfall and rainfall variability post-1970 [Ofori-Sarpong and Annor, 2001; Oduro-Afriyie and Adukpo, 2009; Owusu and Waylen, 2009]. The authors also conducted a spatially disaggregated validation of the UoD PTMC v4.01 country-wide total annual rainfall against the CHIRPS v2.0. Despite different methods of measurement and different spatial aggregations of the dataset, we found a statistically-significant correlation between the two.

Acknowledgments

We are grateful to Kenji Matsuura and Cort J. Willmott of the University of Delaware (<http://climate.geog.udel.edu/~climate/>) for providing us with the data and Julio Pastor Guzman of the University of Southampton for his guidance on the development of R codes. We also acknowledge the Mayflower scholarship, Faculty of Social, Human and Mathematical Sciences, University of Southampton for funding Tawia Abbam's doctoral research at the University of Southampton.

Acknowledgement is also made to the Student Awards Agency for Scotland for providing funding to support Tawia Abbam for her doctoral research at the University of Southampton. We thank the Editor and the anonymous Reviewers for providing us with constructive feedback and invaluable comments.

References:

- Amikuzuno, J., and S. A. Donkoh (2012), Climate Variability and Yields of Major Staple Food Crops in Northern Ghana., *African Crop Sci. J.*, 20(Issue Supplement s2), 349–360.
- Antwi-Agyei, P., E. D. G. Fraser, A. J. Dougill, L. C. Stringer, and E. Simelton (2012), Mapping the vulnerability of crop production to drought in Ghana using rainfall, yield and socioeconomic data, *Appl. Geogr.*, 32(2), 324–334, doi:10.1016/j.apgeog.2011.06.010.
- Arku, F. S. (2012), Rainfall data as a case for investigation into Climate Change in Ghana, *Int. J. Basic Appl. Sci.*, 1(4), 347–362, doi:10.14419/ijbas.v1i4.209.
- Le Barbé, L., T. Lebel, and D. Tapsoba (2002), Rainfall variability in West Africa during the years 1950-90, *J. Clim.*, 15(2), 187–202, doi:10.1175/1520-0442(2002)015<0187:RVIWAD>2.0.CO;2.
- Barrios, S., B. Ouattara, and E. Strobl (2008), The impact of climatic change on agricultural production: Is it different for Africa?, *Food Policy*, 33(4), 287–298, doi:10.1016/j.foodpol.2008.01.003.
- Cooper, P. J. M., J. Dimes, K. P. C. Rao, B. Shapiro, B. Shiferaw, and S. Twomlow (2008), Coping better with current climatic variability in the rain-fed farming systems of sub-Saharan Africa: An essential first step in adapting to future climate change?, *Agric. Ecosyst. Environ.*, 126(1–2), 24–35, doi:10.1016/j.agee.2008.01.007.
- Dieppois, B., A. Durand, M. Fournier, A. Diedhiou, B. Fontaine, N. Massei, Z. Nouaceur, and D. Sebag (2015), Low-frequency variability and zonal contrast in Sahel rainfall and Atlantic sea surface temperature teleconnections during the last century, *Theor. Appl. Climatol.*, 121(1–2), 139–155, doi:10.1007/s00704-014-1229-5.
- Efthymiadis, D., P. D. Jones, K. R. Briffa, I. Auer, R. Böhm, W. Schöner, C. Frei, and J. Schmidli (2006), Construction of a 10-min-gridded precipitation data set for the Greater Alpine Region for 1800–2003, *J. Geophys. Res. Atmos.*, 111(1), doi:10.1029/2005JD006120.

Endreny, T. A., and N. Imbeah (2009), Generating robust rainfall intensity-duration-frequency estimates with short-record satellite data, *J. Hydrol.*, 371(1–4), 182–191, doi:10.1016/j.jhydrol.2009.03.027.

Geografisk (1997), Estimation of Surface Temperature and Rainfall in Ghana, *Tidsskr. Bind*, 97.

Ghana Statistical Service (2012), *2010 Population and Housing Census*.

Ghana Statistical Service (2013), 2010 POPULATION & HOUSING CENSUS, 2010 *Popul. Hous. Census - Natl. Anal. Rep.*, 305–337.

Ghana Statistical Service (2014), Statistics for Development and Progress: Gross Domestic Product 2011, *Ghana Stat. Serv. Stat. Dev. Prog. Natl. Accounts Stat. 2014*, (April), 1–8.

Giannini, A., M. Biasutti, and M. M. Verstraete (2008), A climate model-based review of drought in the Sahel: Desertification, the re-greening and climate change, *Glob. Planet. Change*, 64(3–4), 119–128, doi:10.1016/j.gloplacha.2008.05.004.

Gilbert, R. O. (1987), *Statistical Methods for Environmental Pollution Monitoring*.

GSS (2013), *Report 2010 Population and Housing Report. Regional Analytical Report. Ashanti Region*.

Issahaku, A.-R., B. B. Champion, and R. Edziyie (2016), Rainfall and temperature changes and variability in the Upper East Region of Ghana, *Earth Sp. Sci.*, 3(8), 284–294, doi:10.1002/2016EA000161.

Issahaku, Z. A., and K. L. Maharjan (2013), Climate change impact on revenue of major food crops in Ghana: Structural ricardian cross-sectional analysis, *Communities Livelihood Strateg. Dev. Ctries.*, 19(4), 13–32, doi:10.1007/978-4-431-54774-7_2.

Issahaku, Z. A., and K. L. Maharjan (2014), Communities and Livelihood Strategies in Developing Countries, *Communities Livelihood Strateg. Dev. Ctries.*, 13–32, doi:10.1007/978-4-431-54774-7.

Jones, P. G., and P. K. Thornton (2003), The potential impacts of climate change on maize production in Africa and Latin America in 2055, *Glob. Environ. Chang.*,

13(1), 51–59, doi:10.1016/S0959-3780(02)00090-0.

Kayode, G. A., M. Amoakoh-Coleman, C. Brown-Davies, D. E. Grobbee, I. A. Agyepong, E. Ansah, and K. Klipstein-Grobusch (2014), *Quantifying the validity of routine neonatal healthcare data in the Greater Accra Region, Ghana*.

Koranteng, K. A., and J. M. McGlade (2001), Climatic trends in continental shelf waters off Ghana and in the Gulf of Guinea, 1963–1992, *Oceanol. Acta*, 24(2), 187–198, doi:10.1016/S0399-1784(01)01140-9.

Kouakou, A., E. Lawin, B. Kamagaté, A. Dao, I. Savané, and B. Srohourou (2016), Rainfall Variability across the Agneby Watershed at the Agboville Outlet in Côte d'Ivoire, West Africa, *Hydrology*, 3(4), 43, doi:10.3390/hydrology3040043.

Lacombe, G., M. McCartney, and G. Forkuor (2012), Drying climate in Ghana over the period 1960–2005: evidence from the resampling based Mann Kendall test at local and regional levels, *Hydrol. Sci. J.*, 57(8), 1594–1609.

Maidment, R. I., D. Grimes, R. P. Allan, E. Tarnavsky, M. Marcstringer, T. Hewison, R. Roebeling, and E. Black (2014), The 30 year TAMSAT african rainfall climatology and time series (TARCAT) data set, *J. Geophys. Res.*, 119(18), 10619–10644, doi:10.1002/2014JD021927.

Manzanas, R., L. K. Amekudzi, K. Preko, S. Herrera, and J. M. Gutiérrez (2014), Precipitation variability and trends in Ghana: An intercomparison of observational and reanalysis products, *Clim. Change*, 124(4), 805–819, doi:10.1007/s10584-014-1100-9.

Matsuura, K., and C. J. Willmott (2015), Terrestrial Precipitation: 1900–2014 Gridded Monthly Time Series, *Arch. (Version 4.01)*. Available from: http://www-das.uwyo.edu/~geerts/cwx/notes/chap10/global_precip.html

Mawunya, F. D., S. G. K. Adiku, K. B. Laryea, M. Yangyuoru, and E. Atika (2012), Characterisation of seasonal rainfall for cropping schedules, *West African J. Appl. Ecol.*, 19(1), 107–118.

Ministry of Finance (2017), *The Budget Statement of the Government of Ghana for the 2017 Financial Year*.

MoFA (2015), *Facts and Figures (2014) : Agriculture in Ghana*.

Neumann, R., G. Jung, P. Laux, and H. Kunstmann (2007), Climate trends of temperature, precipitation and river discharge in the volta basin of West Africa, *Int. J. River Basin Manag.*, 5(1), 17–30, doi:10.1080/15715124.2007.9635302.

Nkrumah, F., N. A. B. Klutse, D. C. Adukpo, K. Owusu, K. A. Quagraine, A. Owusu, and W. Gutowski (2014), Rainfall Variability over Ghana: Model versus Rain Gauge Observation, *Int. J. Geosci.*, 5(7), 673–683, doi:10.4236/ijg.2014.57060.

Nyatuame, M., V. Owusu-Gyimah, and F. Ampyaw (2014), Statistical Analysis of Rainfall Trend for Volta Region in Ghana, *Int. J. Atmos. Sci.*, 2014, 1–11, doi:10.1155/2014/203245.

Oduro-Afriyie, K., and D. Adukpo (2009), Spectral characteristics of the annual mean rainfall series in Ghana, *West African J. Appl. Ecol.*, 9(1), 1–9, doi:10.4314/wajae.v9i1.45687.

Ofori-Sarpong, E., and J. Annor (2001), Rainfall over Accra, 1901-90, *Weather*, 56, 55–62.

Online, R., F. A. Johnson, H. Chandra, J. J. Brown, and S. S. Padmadas (2010), District-level Estimates of Institutional Births in Ghana: Application of Small Area Estimation Technique Using Census and DHS Data District-level Estimates of Institutional Births in Ghana: Application of Small Area Estimation Technique Using Census and , *J. Off. Stat. an Int. Q.*, 26(2), 341–359.

Opoku-Ankomah, Y., and I. Cordery (1994), Atlantic Sea Surface Temperatures and Rainfall Variability in Ghana, *J. Clim.*, 7(4), 551–558, doi:10.1175/1520-0442(1994)007<0551:ASSTAR>2.0.CO;2.

Owusu, K., and P. Waylen (2009), Trends in spatio-temporal variability in annual rainfall in Ghana (1951-2000), *Weather*, 64(5), 115–120, doi:10.1002/wea.255.

Owusu, K., P. Waylen, and Y. Qiu (2008), Changing rainfall inputs in the Volta basin: Implications for water sharing in Ghana, *GeoJournal*, 71(4), 201–210, doi:10.1007/s10708-008-9156-6.

Paeth, H., and A. Hense (2004), SST versus climate change signals in West African

rainfall: 20th-century variations and future projections, *Clim. Change*, 65(1–2), 179–208, doi:10.1023/B:CLIM.0000037508.88115.8a.

Roudier, P., B. Sultan, P. Quirion, and A. Berg (2011), The impact of future climate change on West African crop yields: What does the recent literature say?, *Glob. Environ. Chang.*, 21(3), 1073–1083, doi:10.1016/j.gloenvcha.2011.04.007.

Rowhani, P., D. B. Lobell, M. Linderman, and N. Ramankutty (2011), Climate variability and crop production in Tanzania, *Agric. For. Meteorol.*, 151(4), 449–460, doi:10.1016/j.agrformet.2010.12.002.

Schneider, U., A. Becker, P. Finger, A. Meyer-Christoffer, M. Ziese, and B. Rudolf (2014), GPCC's new land surface precipitation climatology based on quality-controlled in situ data and its role in quantifying the global water cycle, *Theor. Appl. Climatol.*, 115(1–2), 15–40, doi:10.1007/s00704-013-0860-x.

Sultan, B., P. Roudier, P. Quirion, A. Alhassane, B. Muller, M. Dingkuhn, P. Ciais, M. Guimberteau, S. Traore, and C. Baron (2013), Assessing climate change impacts on sorghum and millet yields in the Sudanian and Sahelian savannas of West Africa, *Environ. Res. Lett.*, 8(1), 14040, doi:10.1088/1748-9326/8/1/014040.

Sun, Q., C. Miao, Q. Duan, D. Kong, A. Ye, Z. Di, and W. Gong (2014), Would the “real” observed dataset stand up? A critical examination of eight observed gridded climate datasets for China, *Environ. Res. Lett.*, 9(1), doi:10.1088/1748-9326/9/1/015001.

Thornton, P. K., P. G. Jones, G. Alagarswamy, and J. Andresen (2009), Spatial variation of crop yield response to climate change in East Africa, *Glob. Environ. Chang.*, 19(1), 54–65, doi:10.1016/j.gloenvcha.2008.08.005.

Thornton, P. K., P. J. Ericksen, M. Herrero, and A. J. Challinor (2014), Climate variability and vulnerability to climate change: A review, *Glob. Chang. Biol.*, 20(11), 3313–3328, doi:10.1111/gcb.12581.

Wossen, T., and T. Berger (2015), Climate variability, food security and poverty: Agent-based assessment of policy options for farm households in Northern Ghana, *Environ. Sci. Policy*, 47, 95–107, doi:10.1016/j.envsci.2014.11.009.

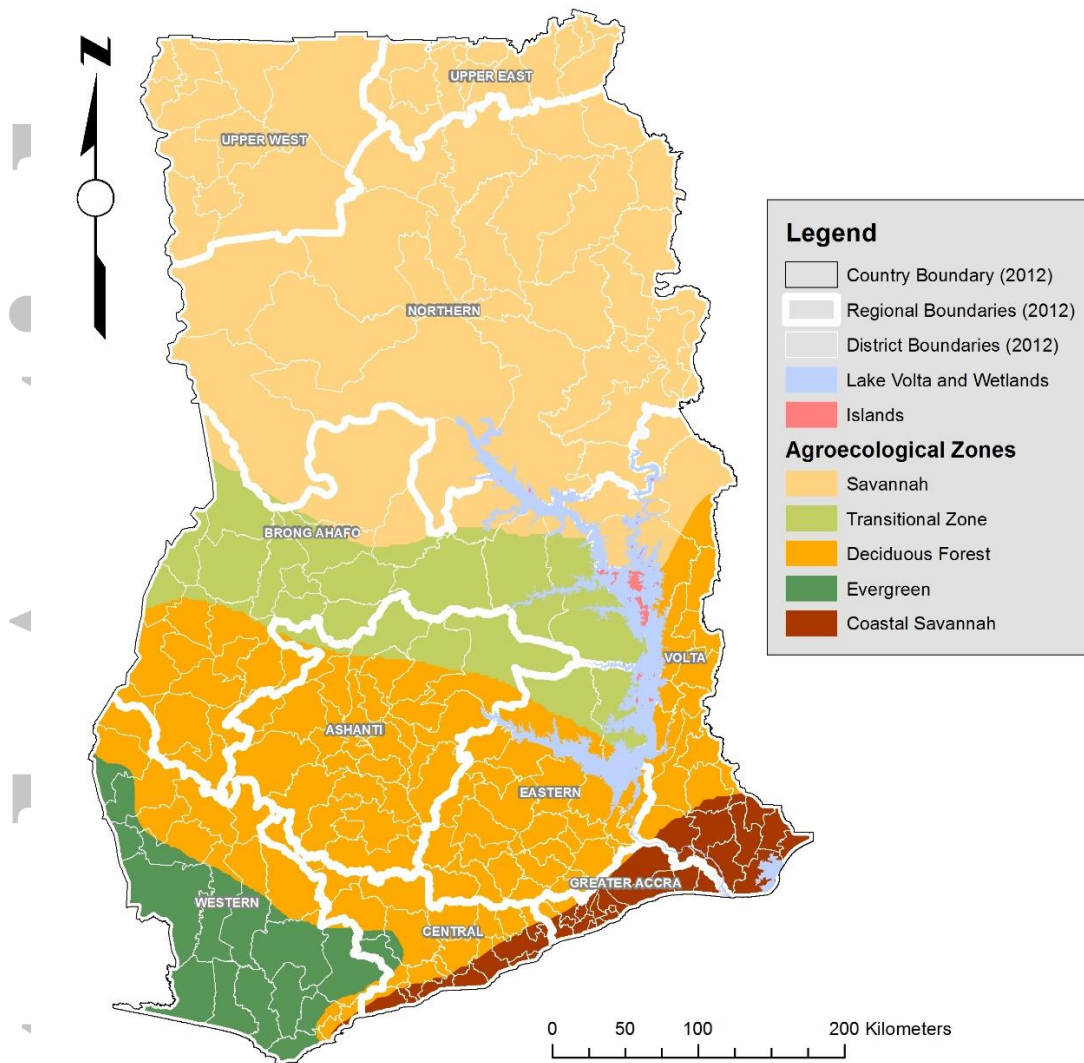


Figure 1. Agro-ecological zones of Ghana: Savannah, Transitional Zone, Deciduous Forest, Evergreen and Coastal Savannah. Source (Harvest Choice 2005).

ACCEPT

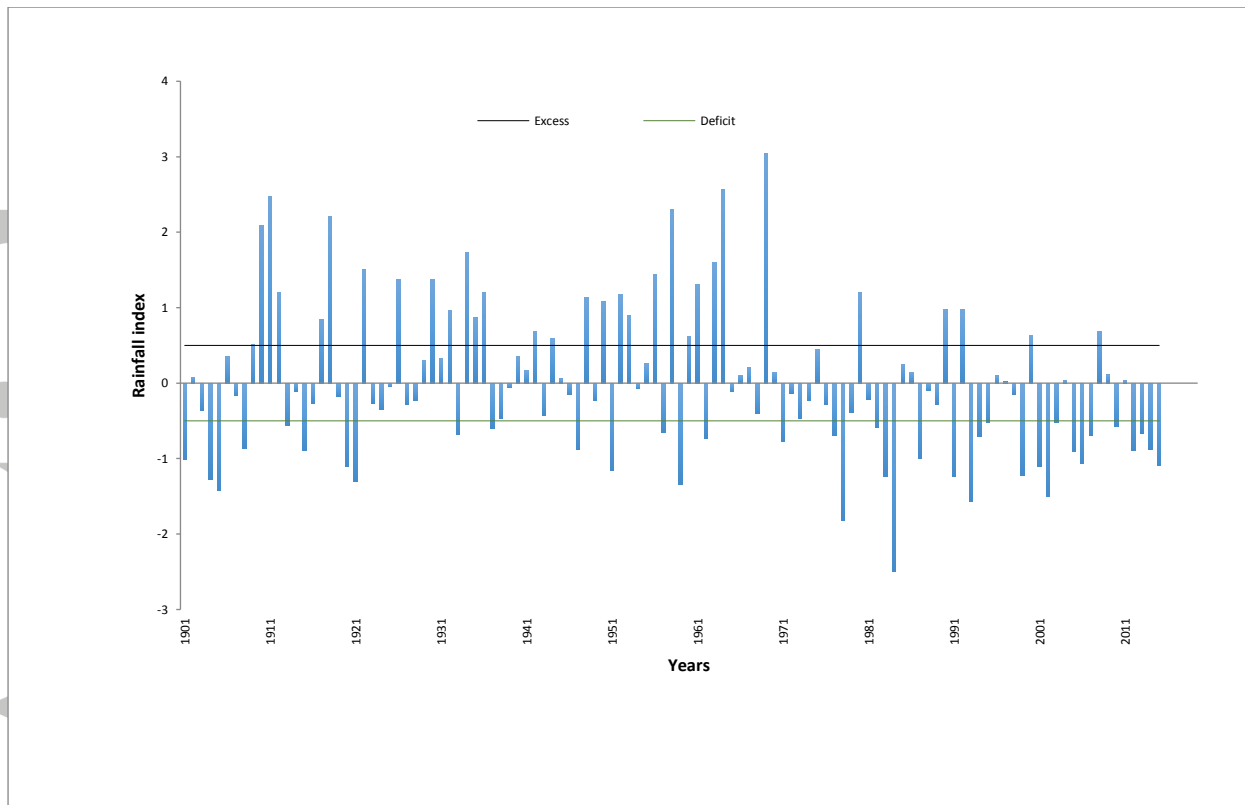


Figure 2. Interannual variability of precipitation rates using the Lamb Index, Ghana, 1900-2014

Accepted

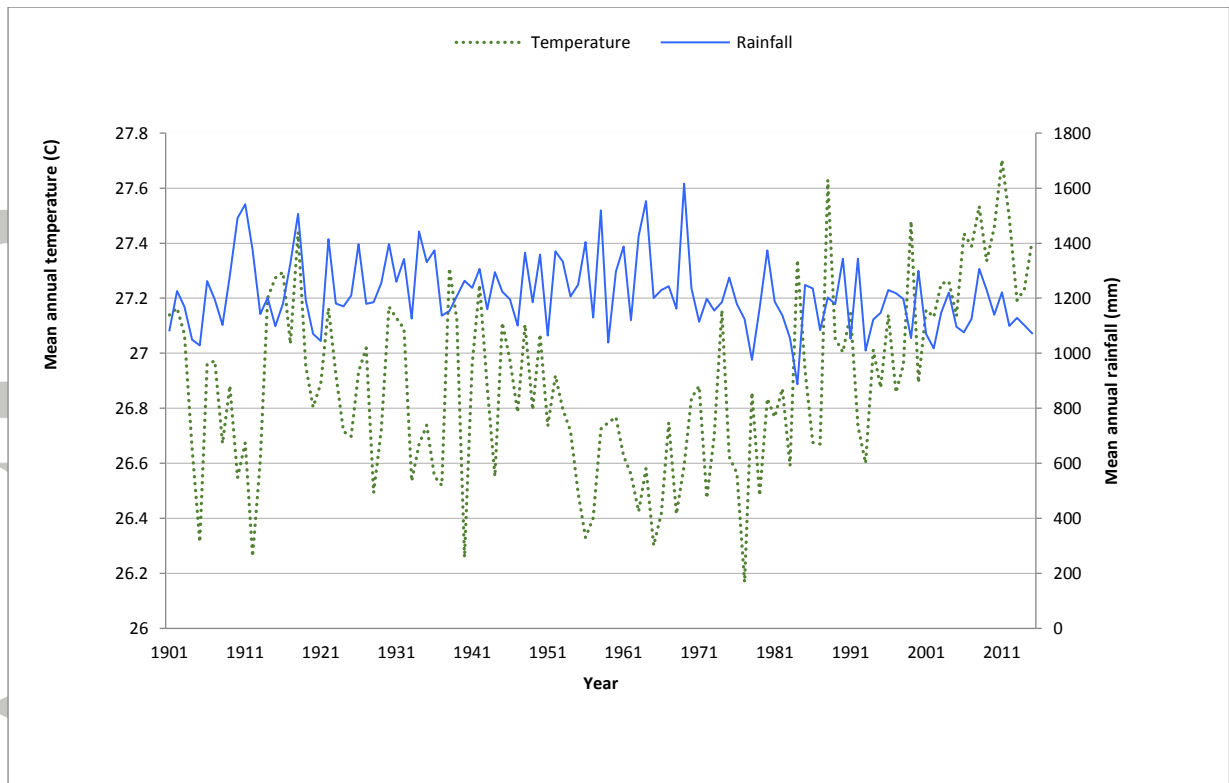


Figure 3. Mean annual rainfall and temperature over Ghana, 1900-2014 (rainfall - solid line; temperature - broken line)

Accepted

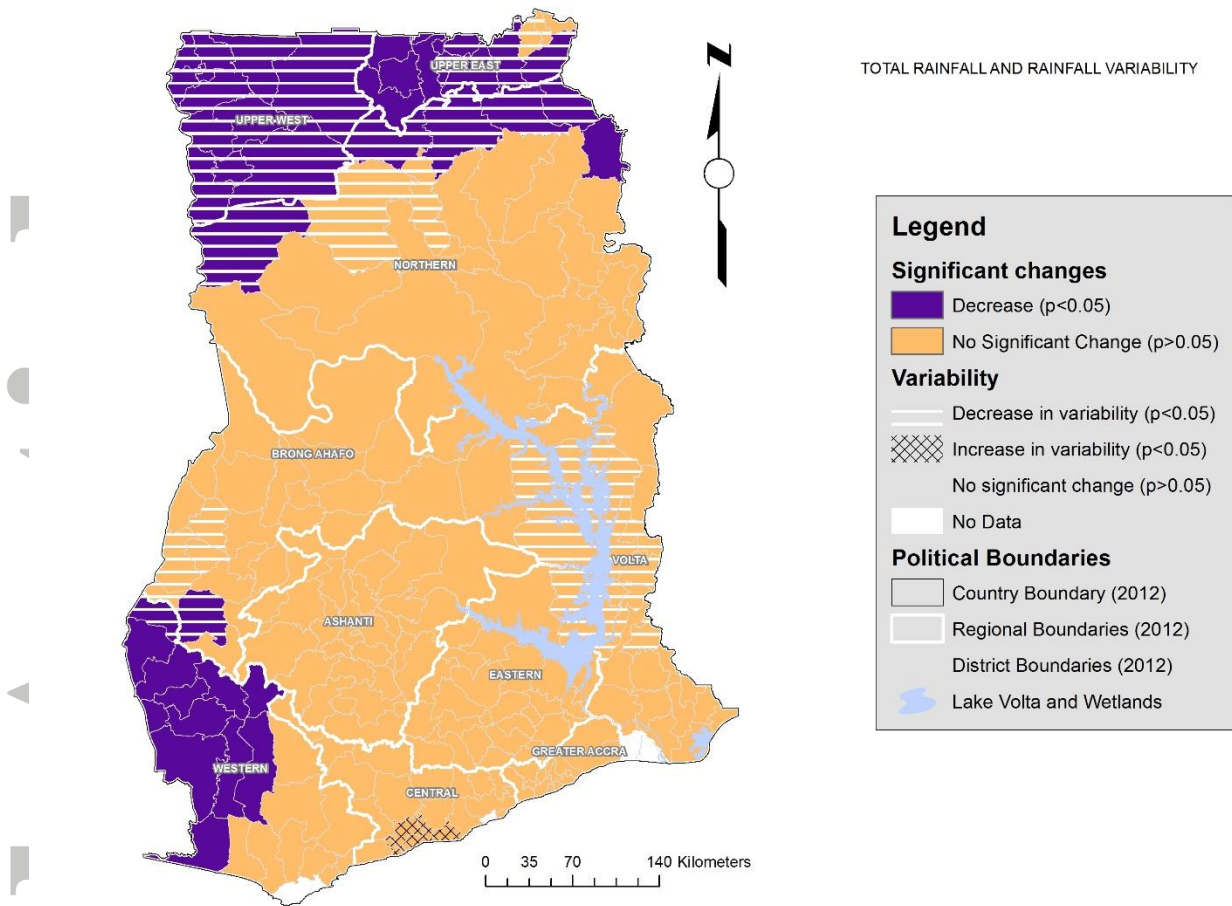


Figure 4. Mann-Kendall spatial analysis of total annual rainfall and rainfall variability

Accepted

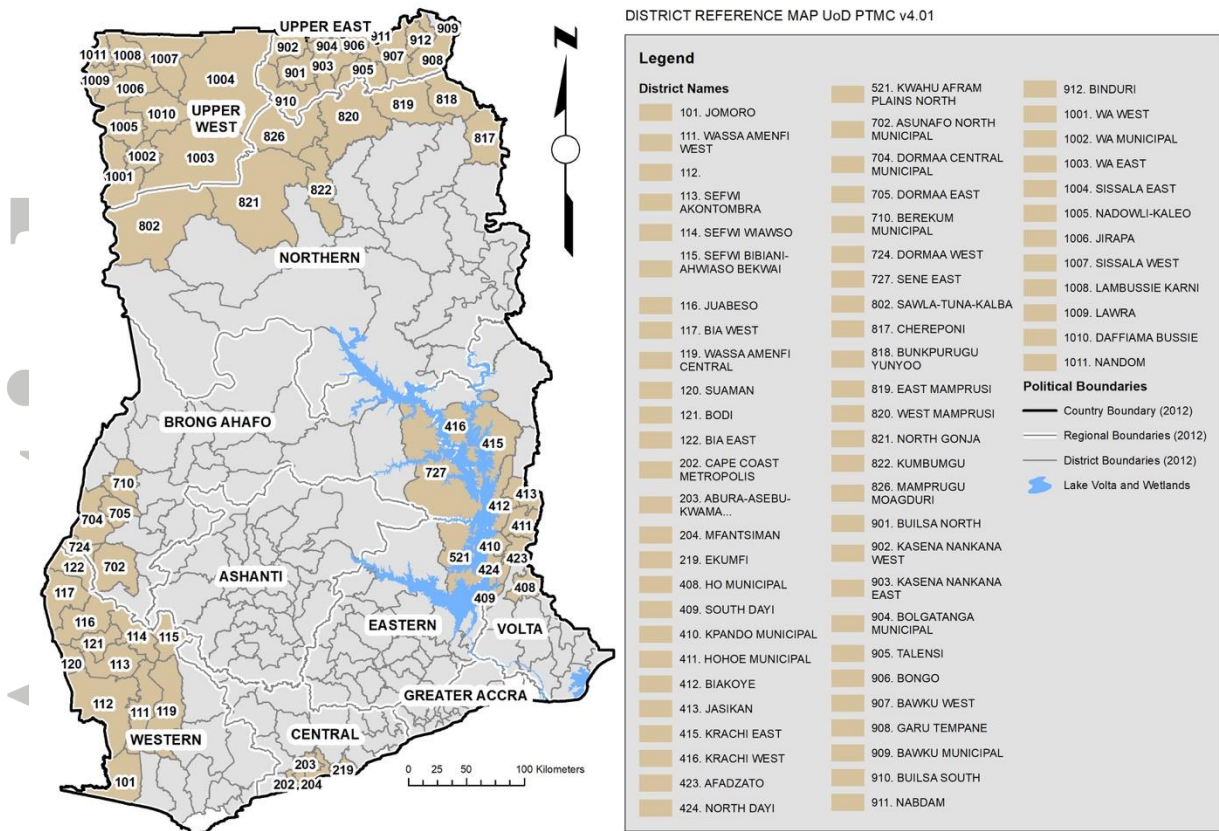


Figure 5 Map of districts referenced in Results section.

Accepted

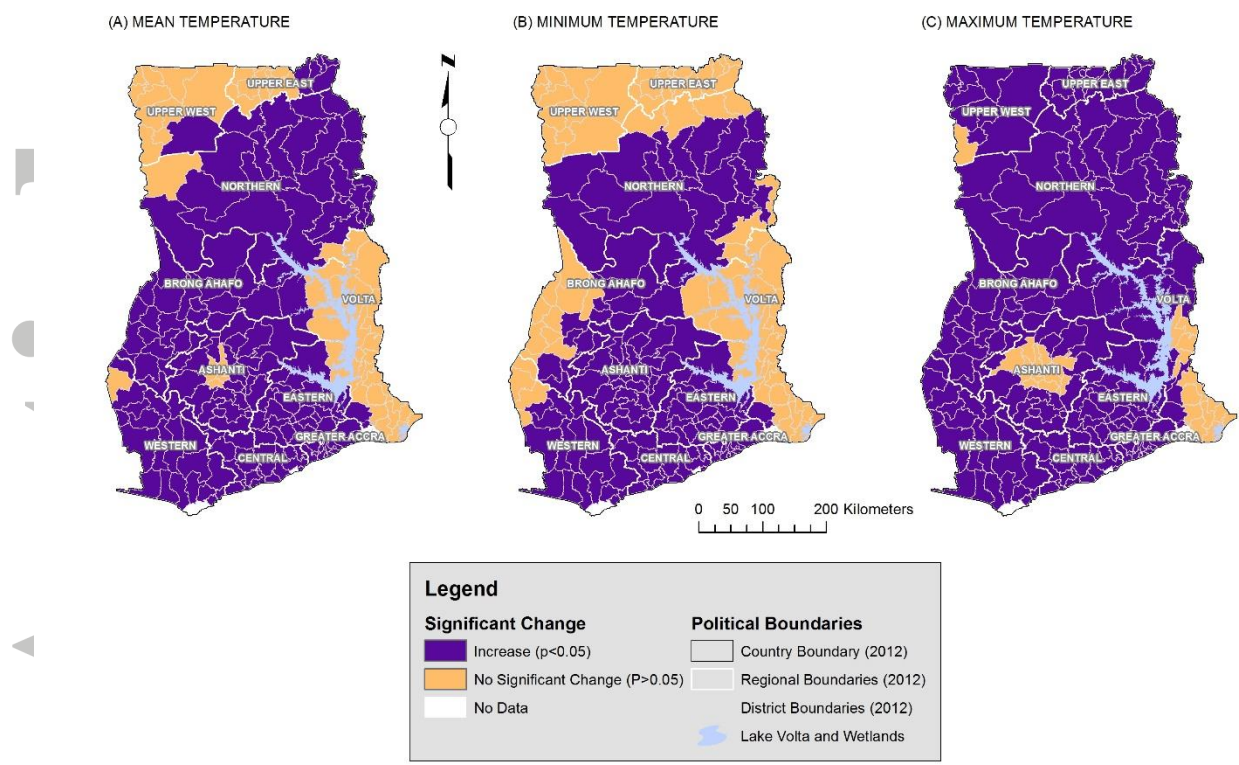


Figure 6. Visualised results of the Mann-Kendall spatial analysis of mean, minimum and maximum annual temperature changes over Ghana between 1900 and 2014.

Accepted

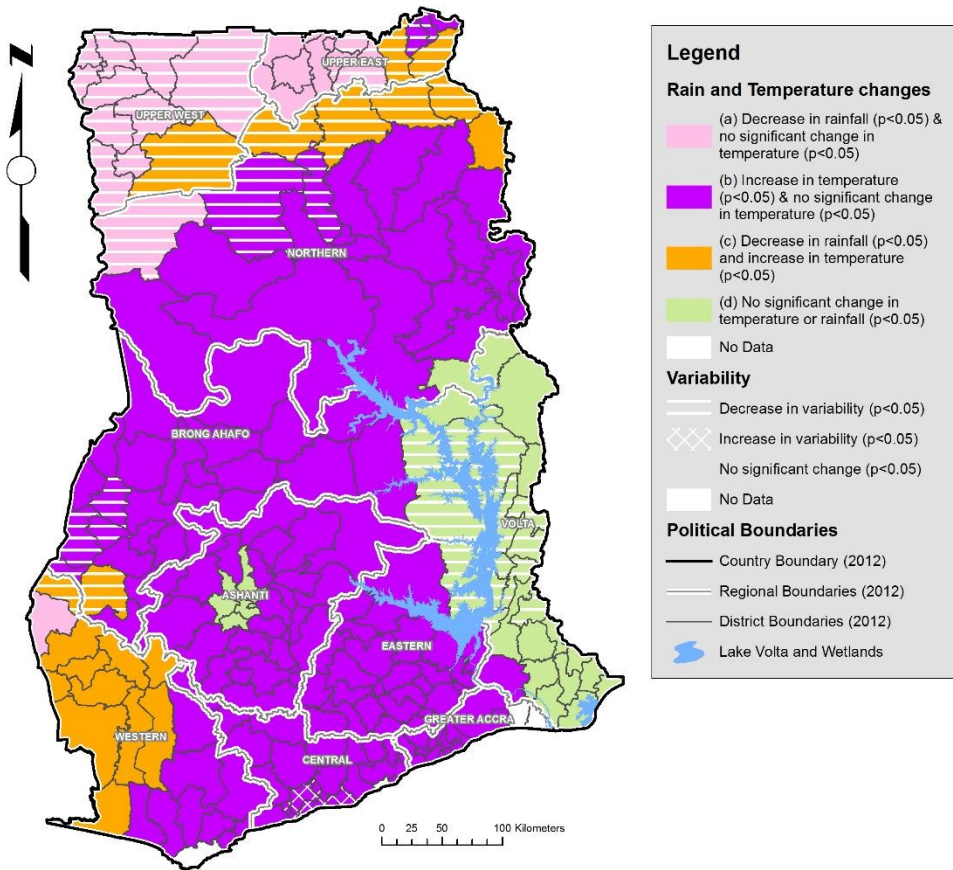


Figure 7. Intersection analysis of both significant and no significant changes in total annual rainfall, rainfall variability and mean annual temperatures for the identification of climate-stressed localities in Ghana, 1900-2014.

Accepted