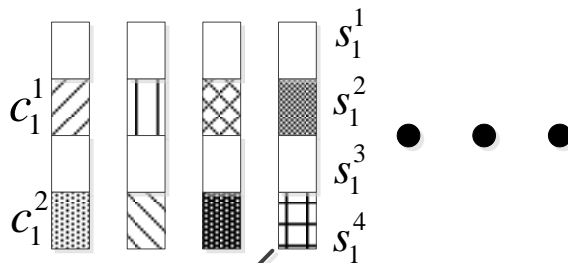


SCMA encoder at BS :  $N=2, \Omega=4, U=6, M_u=4$

1<sup>st</sup> mobile user's

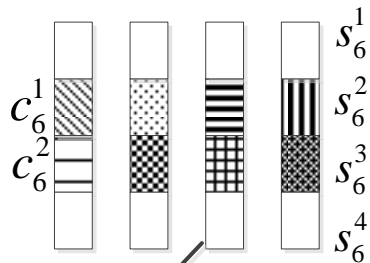
SCMA codebook:



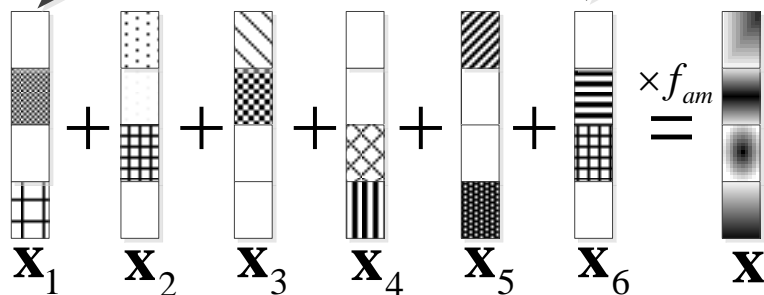
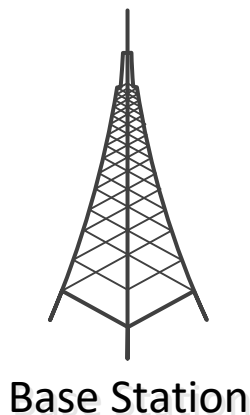
(1,1)

6<sup>th</sup> mobile user's

SCMA codebook:



(1,0)



$\mathbf{h}_1$

$\mathbf{h}_u$

$\mathbf{h}_6$

1<sup>st</sup> mobile user

$u^{\text{th}}$  mobile user

6<sup>th</sup> mobile user