

Single technology appraisal

Addendum 2 to the ERG report: Daratumumab in combination with bortezomib and dexamethasone for treating relapsed or refractory multiple myeloma. Survival estimates.

Produced by Southampton Health Technology Assessments Centre
(SHTAC)

Authors Neelam Kalita, Research Fellow (Health Economics), SHTAC
Karen Pickett, Research Fellow, SHTAC
Joanne Lord, Professorial Fellow, SHTAC
Geoff Frampton, Senior Research Fellow, SHTAC
G. Lily Yao, Associate Professor (Health Economics), Southampton University
Joanna Picot, Senior Research Fellow, SHTAC

Addendum date 23/05/2018

Commercial in confidence information relating to the Patient Access Schemes is underlined and highlighted in green for comparators and underlined and highlighted in blue for the CAA and Patient Access Scheme for daratumumab (monotherapy and combination therapy respectively).

Table 1 Overall survival: CS base case (CASTOR independently fitted, 2L)

OS distribution	DBd		Bd	
	5 year	10 year	5 year	10 year
Exponential	63.1%	39.7%	39.6%	15.6%
Weibull	58.0%	28.4%	33.5%	8.7%
Log normal	67.0%	51.6%	47.3%	30.6%
Log logistic	61.8%	40.5%	41.1%	22.7%
Gompertz	31.2%	0.0%	21.3%	0.0%
Generalised gamma	52.1%	1.9%	16.8%	0.0%

Table 2 Overall survival: Company base case and scenarios *

Scenario	Year	Percentage alive		
		DBd	Bd	Cd
Company base case: DBd log-logistic / Bd Gompertz/ HR Cd vs. Bd 0.83	5	61.8%	21.3%	27.6%
	10	40.5%	0.0%	0.1%
DBd Weibull / Bd Gompertz	5	58.0%	21.3%	27.6%
	10	28.4%	0.0%	0.1%
DBd exponential / Bd Gompertz	5	63.1%	21.3%	27.6%
	10	39.7%	0.0%	0.1%
DBd log-logistic / Bd Weibull	5	61.8%	33.5%	40.2%
	10	40.5%	8.7%	13.1%
DBd Weibull / Bd Weibull	5	58.0%	33.5%	40.2%
	10	28.4%	8.7%	13.1%
Unadjusted for subsequent treatment	5	59.9%	20.0%	26.2%
	10	38.5%	0.0%	0.0%
Adjusted for Bd duration: HR Cd vs. Bd 0.57	5	61.8%	21.3%	41.4%
	10	40.5%	0.0%	1.2%

* No impact on other scenarios

Table 3 Overall survival: ERG preferred analysis and scenarios *

Scenario	Year	Percentage alive		
		DBd	Bd	Cd
ERG base case: Bd Weibull / HR DBd vs. Bd 0.53 / Cd vs. Bd 0.55	5	56.0%	33.5%	54.8%
	10	27.4%	8.7%	26.1%
2L: HR DBd vs. Bd 0.50 / Cd vs. Bd 0.57	5	57.8%	33.5%	53.5%
	10	29.5%	8.7%	24.8%
Unadjusted for subsequent treatment	5	55.3%	32.7%	54.0%
	10	25.9%	7.8%	24.6%
Unadjusted for Bd duration: HR Cd vs. Bd 0.80	5	56.0%	33.5%	41.5%
	10	27.4%	8.7%	14.1%
Equal hazards from 5 years	5	56.0%	33.5%	54.8%
	10	14.6%	8.7%	14.3%

* No impact on other scenarios

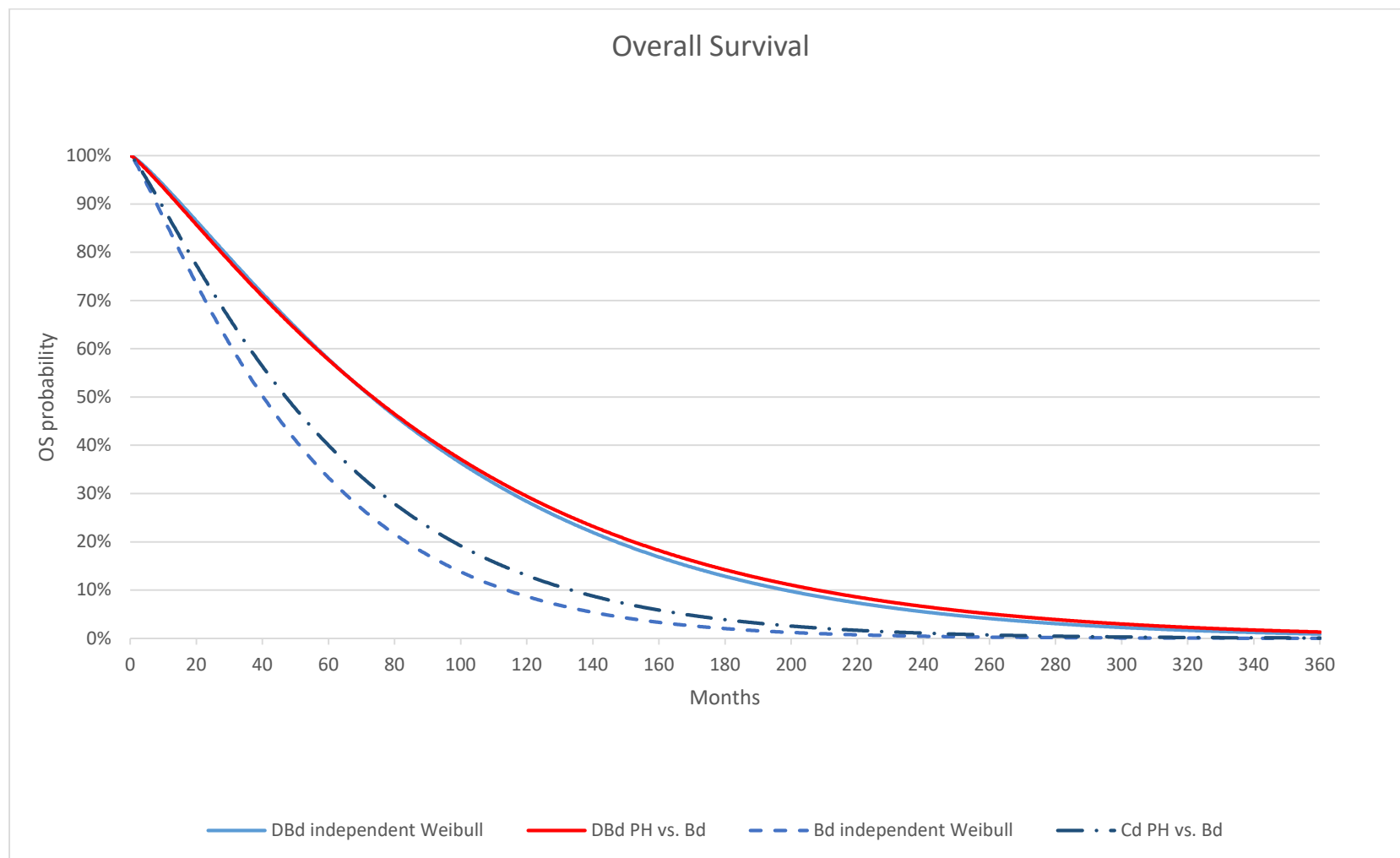


Figure 1 OS extrapolation: Weibull functions with and without proportional hazards assumption for DBd vs. Bd