

Scenario

As experienced in doing a risk assessment, you are asked to conduct the risk assessment for a person with visual impairment navigating spaces in Building 53 (Mountbatten), University of Southampton using the building rating system (BRS). There are 7 spaces to be assessed as follows:

- Main Foyer (Wide-open area)
- Seminar Room (Large, and movable space)
- Zepler Student Laboratory (Large, and fix space)
- Office (Small space)
- Restrooms e.g accessible and public toilets
- Horizontal Circulation e.g. corridor and pathway
- Vertical Circulation e.g. stairs and lifts

All success criteria will be first used in the manually operated audit as pass/fail checklist for measuring the level of accessibility. In the auditing process, there will be four options that users can select, which will affect the score at the end of the process, as follows:

Pass	The space passes the requirement
Fail	The space fails the requirement
Can't tell	Users cannot tell either pass or fail due to technical difficulties, which will require the further (visual) inspection to fulfil the measurement indicated by (*) asterisk after the Conformance is given or a note for further inspection. <u>This will not be accounted in measuring the level of accessibility.</u>
Not applicable (N/A)	Users cannot tell either pass or fail due to no existence of the particular object referred in the requirement. <u>This will not be accounted in measuring the level of accessibility.</u>

Focus Group Questions

1. Would you prefer to use this system frequently when doing a risk assessment for space designs?
2. Did you find the system unnecessarily complex?
3. Did you think the system was easy to use?
4. Do you think you would need the support of a technical person to be able to use this system?
5. Did you find the various functions in this system were well integrated?
6. Did you find there was too much inconsistency in this system?
7. Did you think most people would learn to use this system very quickly?
8. Did you find the system very cumbersome to use?
9. Did you feel very confident using the system?
10. Did you need to learn a lot of things before I could get going with this system?

Section 1 Main Foyer (Wide-open space)

Task: Audit following requirements in Conformance A, AA, and AAA in the given area.

Direction: Circle Pass, Fail, Can't tell, N/A for each requirements in tables below.

Foyer Space - Conformance A						
Categories	Provisions: Must-have items					
Approaching	R.1	The approach to the reception area is smooth and level	Pass	Fail		N/A
Reception Desk	R.2	The reception desk is logically placed	Pass	Fail		N/A
	R.3	The position of the reception desk is identifiable from the entrance to the building	Pass	Fail		N/A
	R.4	Lighting at the desk is appropriate to allow the face of the receptionist to be clearly seen	Pass	Fail		N/A
	R.5	Reflective glass screen is not provided at the reception desk	Pass	Fail		N/A
Lighting	R.6	Lighting to the reception area is appropriate to allow easy communication and comfort for users	Pass	Fail		N/A
	R.7	The minimum average illuminance at floor level in the reception area is 300 lux	Pass	Fail		N/A

Foyer Space - Conformance AA						
Categories	Provisions: Should-have items					
Approaching	R.8	Directional signage to identify the position of the reception area is appropriate in terms of provision and design	Pass	Fail	Can't tell	N/A
Reception Desk	R.9	There is sufficient maneuvering space in front of the reception desk	Pass	Fail	Can't tell	N/A
	R.10	Lighting at the desk is sufficient to enable the completion of any forms, etc.	Pass	Fail	Can't tell	N/A
	R.11	Lighting provides a minimum illuminance at reception desk level of 500 lux	Pass	Fail	Can't tell	N/A

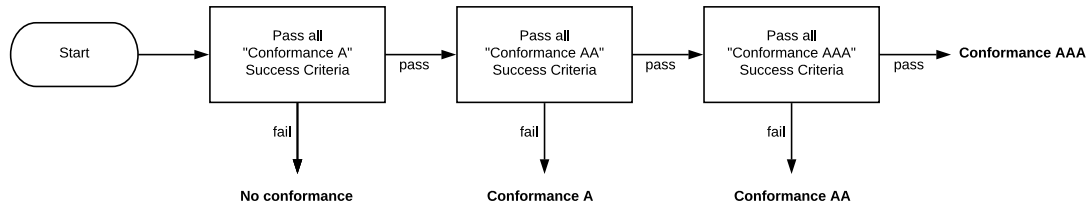
Foyer Space - Conformance AAA						
Categories	Provisions: Could-have items					
Reception Desk	R.12	Communication is possible across the desk from the standing or seated position	Pass	Fail	Can't tell	N/A
	R.13	Illuminance at the desk is controllable				
Seating	R.14	A variety of seating in terms of seat height and with and without arms is provided	Pass	Fail	Can't tell	N/A

... Continued on next page

Foyer Space - Conformance AAA						
Categories	Provisions: Could-have items					
R.15	Seating is sufficiently robust to allow someone to use the arms as assistance when sitting or standing	Pass	Fail	Can't tell	N/A	
R.16	Seating contrasts visually with all backgrounds against which it will be viewed	Pass	Fail	Can't tell	N/A	

Result: Space Classification

Direction: Follow the following flowchart and fill out the final result below.



Note 1: “Can’t tell” and “N/A” are not taken into account in the space classification.

Note 2: If there is “Can’t tell”, there will be a further inspection.

Space classification: _____

Section 2 Seminar (Large, and movable space)

Task: Audit following requirements in Conformance A, AA, and AAA in the given area.

Direction: Circle Pass, Fail, Can't tell, N/A for each requirements in tables below.

General space Space - Conformance A						
Categories	Provisions: Must-have items					
General	G.1	Circulation routes around the room are free of obstacles	Pass	Fail		N/A
	G.2	Most furniture is against the walls in order to provide a clear space in the center of the room	Pass	Fail		N/A
Lighting	G.3	Sufficient lighting is provided at minimum of 100 lux	Pass	Fail		N/A
	G.4	There is an even level of light throughout the room and no dark areas	Pass	Fail		N/A
	G.5	Table and Floor lamps are positioned to avoid trailing wires and risk of trips or bumps	Pass	Fail		N/A
	G.6	Lighting is well-positioned to prevent shadows from objects or from people moving around the room	Pass	Fail		N/A
Sockets, Controls, and Equipment	G.7	There are sufficient and suitable placed electrical sockets for all equipment to be used without trailing wires	Pass	Fail		N/A

General space Space - Conformance AA						
Categories	Provisions: Should-have items					
General	G.8	People with visual impairment should be able to gain access to all the facilities in the room	Pass	Fail	Can't tell	N/A
Lighting	G.9	Lights are individually switched and can be dimmed	Pass	Fail	Can't tell	N/A
Sockets, Controls, and Equipment	G.10	All sockets and controls for heating, windows, lights and electrical equipment can be used without moving furniture	Pass	Fail	Can't tell	N/A

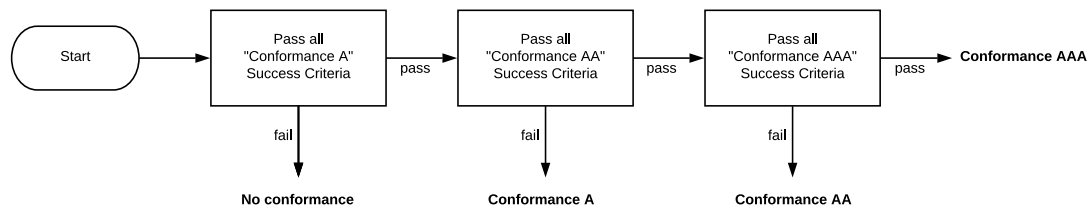
General space Space - Conformance AAA						
Categories	Provisions: Could-have items					
Lighting	G.11	Task lighting is available wherever it may be required (e.g., over drawer, dressing tables, beside bed and at desks)	Pass	Fail	Can't tell	N/A
	G.12	Vertical blinds are provided in order to reduce glares	Pass	Fail	Can't tell	N/A

... Continued on next page

General space Space - Conformance AAA						
Categories	Provisions: Could-have items					
Sockets, Controls, and Equipment	G.13	Tactile is provided on the controls and equipment	Pass	Fail	Can't tell	N/A
Emergency	G.14	Telephone is provided next to an electrical socket suitable for lighting and connection of call system or telecare equipment	Pass	Fail	Can't tell	N/A
Guide dog	G.15	There is sufficient space for a guide dog's bed and equipment	Pass	Fail	Can't tell	N/A

Result: Space Classification

Direction: Follow the following flowchart and fill out the final result below.



Note 1: “Can’t tell” and “N/A” are not taken into account in the space classification.

Note 2: If there is “Can’t tell”, there will be a further investigation.

Space classification: _____

Task: Audit following requirements in Conformance A, AA, and AAA in the given area.

Direction: Circle Pass, Fail, Can't tell, N/A for each requirements in tables below.

Task: Audit following requirements in Conformance A, AA, and AAA in the given area.

Direction: Circle Pass, Fail, Can't tell, N/A for each requirements in tables below.

General space Space - Conformance A						
Categories	Provisions: Must-have items					
General	G.1	Circulation routes around the room are free of obstacles	Pass	Fail	N/A	
	G.2	Most furniture is against the walls in order to provide a clear space in the center of the room	Pass	Fail	N/A	
Lighting	G.3	Sufficient lighting is provided at minimum of 100 lux	Pass	Fail	N/A	
	G.4	There is an even level of light throughout the room and no dark areas	Pass	Fail	N/A	
	G.5	Table and Floor lamps are positioned to avoid trailing wires and risk of trips or bumps	Pass	Fail	N/A	
	G.6	Lighting is well-positioned to prevent shadows from objects or from people moving around the room	Pass	Fail	N/A	
Sockets, Controls, and Equipment	G.7	There are sufficient and suitable placed electrical sockets for all equipment to be used without trailing wires	Pass	Fail	N/A	

General space Space - Conformance AA						
Categories	Provisions: Should-have items					
General	G.8	People with visual impairment should be able to gain access to all the facilities in the room	Pass	Fail	Can't tell	N/A
Lighting	G.9	Lights are individually switched and can be dimmed	Pass	Fail	Can't tell	N/A
Sockets, Controls, and Equipment	G.10	All sockets and controls for heating, windows, lights and electrical equipment can be used without moving furniture	Pass	Fail	Can't tell	N/A

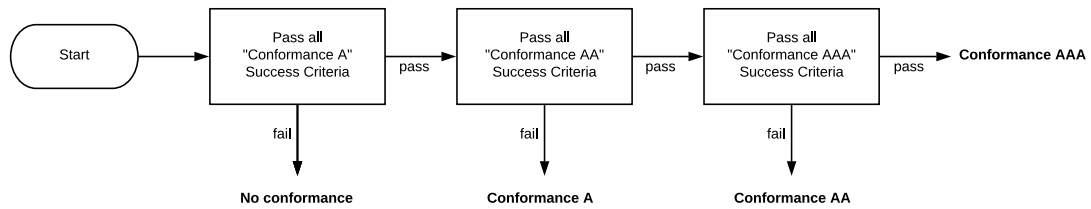
General space Space - Conformance AAA						
Categories	Provisions: Could-have items					
Lighting	G.11	Task lighting is available wherever it may be required (e.g., over drawer, dressing tables, beside bed and at desks)	Pass	Fail	Can't tell	N/A
	G.12	Vertical blinds are provided in order to reduce glares	Pass	Fail	Can't tell	N/A

... Continued on next page

General space Space - Conformance AAA						
Categories	Provisions: Could-have items					
Sockets, Controls, and Equipment	G.13	Tactile is provided on the controls and equipment	Pass	Fail	Can't tell	N/A
Emergency	G.14	Telephone is provided next to an electrical socket suitable for lighting and connection of call system or telecare equipment	Pass	Fail	Can't tell	N/A
Guide dog	G.15	There is sufficient space for a guide dog's bed and equipment	Pass	Fail	Can't tell	N/A

Result: Space Classification

Direction: Follow the following flowchart and fill out the final result below.



Note 1: “Can’t tell” and “N/A” are not taken into account in the space classification.

Note 2: If there is “Can’t tell”, there will be a further inspection.

Space classification: _____

Section 3 Office (Small space)

Task: Audit following requirements in Conformance A, AA, and AAA in the given area.

Direction: Circle Pass, Fail, Can't tell, N/A for each requirements in tables below.

General space Space - Conformance A						
Categories	Provisions: Must-have items					
General	G.1	Circulation routes around the room are free of obstacles	Pass	Fail		N/A
	G.2	Most furniture is against the walls in order to provide a clear space in the center of the room	Pass	Fail		N/A
Lighting	G.3	Sufficient lighting is provided at minimum of 100 lux	Pass	Fail		N/A
	G.4	There is an even level of light throughout the room and no dark areas	Pass	Fail		N/A
	G.5	Table and Floor lamps are positioned to avoid trailing wires and risk of trips or bumps	Pass	Fail		N/A
	G.6	Lighting is well-positioned to prevent shadows from objects or from people moving around the room	Pass	Fail		N/A
Sockets, Controls, and Equipment	G.7	There are sufficient and suitable placed electrical sockets for all equipment to be used without trailing wires	Pass	Fail		N/A

General space Space - Conformance AA						
Categories	Provisions: Should-have items					
General	G.8	People with visual impairment should be able to gain access to all the facilities in the room	Pass	Fail	Can't tell	N/A
Lighting	G.9	Lights are individually switched and can be dimmed	Pass	Fail	Can't tell	N/A
Sockets, Controls, and Equipment	G.10	All sockets and controls for heating, windows, lights and electrical equipment can be used without moving furniture	Pass	Fail	Can't tell	N/A

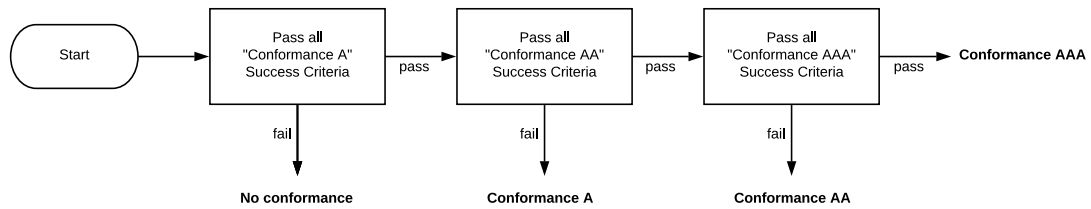
General space Space - Conformance AAA						
Categories	Provisions: Could-have items					
Lighting	G.11	Task lighting is available wherever it may be required (e.g., over drawer, dressing tables, beside bed and at desks)	Pass	Fail	Can't tell	N/A
	G.12	Vertical blinds are provided in order to reduce glares	Pass	Fail	Can't tell	N/A

... Continued on next page

General space Space - Conformance AAA						
Categories	Provisions: Could-have items					
Sockets, Controls, and Equipment	G.13	Tactile is provided on the controls and equipment	Pass	Fail	Can't tell	N/A
Emergency	G.14	Telephone is provided next to an electrical socket suitable for lighting and connection of call system or telecare equipment	Pass	Fail	Can't tell	N/A
Guide dog	G.15	There is sufficient space for a guide dog's bed and equipment	Pass	Fail	Can't tell	N/A

Result: Space Classification

Direction: Follow the following flowchart and fill out the final result below.



Note 1: “Can’t tell” and “N/A” are not taken into account in the space classification.

Note 2: If there is “Can’t tell”, there will be a further inspection.

Space classification: _____

Section 4 Accessible Washroom

Task: Audit following requirements in Conformance A, AA, and AAA in the given area.

Direction: Circle Pass, Fail, Can't tell, N/A for each requirements in tables below.

Accessible Washroom Space - Conformance A					
Categories	Provisions: Mush-have items				
Layout	AW.1	The maximum travel distance (combined horizontal and vertical) to an accessible washroom with an appropriate transfer side is 40m	Pass	Fail	N/A
Door	AW.2	Door opens outwards, and it must not encroach into the accessible route OR Door opens inwards, and it must be removed easily in case of emergency	Pass	Fail	N/A
WC	AW.3	The space between the WC and the wall is kept clear to allow a carer to assist if required	Pass	Fail	N/A
	AW.4	The seat is securely fixed and is of good quality	Pass	Fail	N/A
Lighting	AW.5	A white pull cord for the light is provided adjacent to the door OR A device is installed which automatically switches on the light when the toilet door is opened	Pass	Fail	N/A
	AW.6	A lighting is not activated by a passive infrared (PIR) motion detector	Pass	Fail	N/A
	AW.7	The lighting provided a minimum 100 lux at floor level	Pass	Fail	N/A
	AW.8	The lighting must not produce glare	Pass	Fail	N/A
Visual contrast	AW.9	The sanitary fittings and facilities provided adequate via contrast with their background	Pass	Fail	N/A
	AW.10	Visual contrast is provided at between the wall and floor junction	Pass	Fail	N/A
Other essential features	AW.11	The floor covering is slip-resistant	Pass	Fail	N/A
	AW.12	Wall tiles or finishes are non-reflective	Pass	Fail	N/A
	AW.13	Facilities for disposable items are provided in a manner that does not impinge upon the clear space (transfer and maneuvering) within the WC	Pass	Fail	N/A

Accessible Washroom Space - Conformance AA					
Categories	Provisions: Should-have items				
Accessibility	AW.14	Signage indicating the route to, and position to the toilet facilities is adequate	Pass	Fail	Can't tell

... Continued on next page

Accessible Washroom Space - Conformance AA						
Categories	Provisions: Should-have items					
	AW.15	Accessible washroom is provided at every location where standard toilet facilities are provided	Pass	Fail	Can't tell	N/A
	AW.16	The accessible washroom is unisex toilet facility that can be accessed independently of other toilet accommodation	Pass	Fail	Can't tell	N/A
	AW.17	The accessible washroom is able to be locked by lever type	Pass	Fail	Can't tell	N/A
Layout	AW.18	There is minimum clear space of 1750mm by 1750mm	Pass	Fail	Can't tell	N/A
WC	AW.19	The flush is a spatula type	Pass	Fail	Can't tell	N/A
	AW.20	The flush is on the open transfer side	Pass	Fail	Can't tell	N/A
Dispensers	AW.21	There is a single-sheet toilet paper dispenser within easy reach of the WC	Pass	Fail	Can't tell	N/A
Grab rails	AW.22	There is a drop-down rail that is easy to operate from the seated position place 350mm from the center line of the WC	Pass	Fail	Can't tell	N/A
	AW.23	There is a vertical grab rail that extends between 800mm and 1400mm above from floor level and is placed to the open side of the WC, its center line 470mm from the center of the WC	Pass	Fail	Can't tell	N/A
	AW.24	There is a grab rail on the wall adjacent to the WC that is 600mm long and is placed 680mm above from floor level. One end of the grab rail is 250 mm away from the wall supporting the WC	Pass	Fail	Can't tell	N/A
	AW.25	There is a grab rail on the door at a height that will enable user to pull the door closed	Pass	Fail	Can't tell	N/A
	AW.26	The diameter of all grab rails is between 32mm and 35mm, and they are easy to grip even when wet	Pass	Fail	Can't tell	N/A
Washing and drying hands	AW.27	There is a wall-supported wash hand basin provided with the top of the basin 720-740mm above from floor level	Pass	Fail	Can't tell	N/A
	AW.28	The basin is 140-160mm away from the WC	Pass	Fail	Can't tell	N/A
Alarm	AW.29	An emergency assistance alarm should be provided with a pull cord reachable from the bath or shower and adjacent floor area	Pass	Fail	Can't tell	N/A

Accessible Washroom Space - Conformance AAA

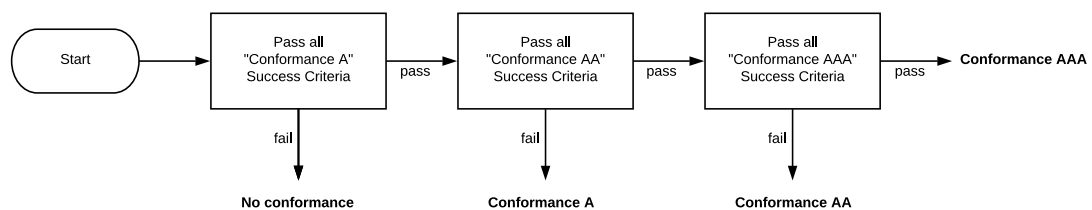
Categories	Provisions: Could-have items					
WC	AW.30	There is a low-level cistern that could be used as a backrest	Pass	Fail	Can't tell	N/A

... Continued on next page

Accessible Washroom Space - Conformance AAA						
Categories	Provisions: Could-have items					
	OR A backrest with padded section has been provided 680mm above from floor level					
Dispensers	AW.31	There is a dispenser for hand wipes within easy reach of the WC	Pass	Fail	Can't tell	N/A
Grab rails	AW.32	There are two vertical grab rails placed both side of the wash hand basin, which extend between 800mm and 1400mm above from floor level	Pass	Fail	Can't tell	N/A
Washing and drying hands	AW.33	A single-leave mixer tap is provided	Pass	Fail	Can't tell	N/A
	AW.34	A soap dispenser is provided	Pass	Fail	Can't tell	N/A
	AW.35	The temperature of the water is controllable	Pass	Fail	Can't tell	N/A
	AW.36	A manually operated or automatic proximity warm-air dryer with the activation button at 1200mm above from floor level is provided adjacent to the hand basin	Pass	Fail	Can't tell	N/A
Other essential features	AW.37	Coat hooks are provided at 1050mm and 1400mm above from floor level	Pass	Fail	Can't tell	N/A
	AW.38	A mirror is provided above the hand basin	Pass	Fail	Can't tell	N/A

Result: Space Classification

Direction: Follow the following flowchart and fill out the final result below.



Note 1: “Can’t tell” and “N/A” are not taken into account in the space classification.

Note 2: If there is “Can’t tell”, there will be a further inspection.

Space classification: _____

Section 5 Horizontal Circulation

Task: Audit following requirements in Conformance A, AA, and AAA in the given area.

Direction: Circle Pass, Fail, Can't tell, N/A for each requirements in tables below.

Horizontal Circulation Space - Conformance A					
Categories	Provisions: Mush-have items				
Corridors and Passageways	H.1	Corridors have a minimum clear width of 1200 mm	Pass	Fail	N/A
	H.2	Doors along the corridors must not open into circulation routes OR Otherwise they must be recessed	Pass	Fail	N/A
Surfaces	H.3	Corridors are splayed or rounded at corners	Pass	Fail	N/A
	H.4	The floor surface finishes are firm	Pass	Fail	N/A
	H.5	The floor surface is matt OR low reflectivity	Pass	Fail	N/A
	H.6	The Floor surfaces are slip-resistant, especially when wet	Pass	Fail	N/A
	H.7	The floor surfaces are not shiny and potentially slippery	Pass	Fail	N/A
	H.8	The pattern of any floor covering is plain or with a subtle pattern	Pass	Fail	N/A
Wall	H.9	Junctions between finishes are level and firmly fixed	Pass	Fail	N/A
	H.10	Appropriate visual contrast is provided at the junction of the floor with the wall	Pass	Fail	N/A
Glazed walls	H.11	Wall surfaces are smooth to touch	Pass	Fail	N/A
	H.12	Appropriately designed manifestation is provided to glass screens	Pass	Fail	N/A
Screens and doors	H.13	Manifestation contrast with the background against which it is viewed, both from inside and outside, in all lighting situations	Pass	Fail	N/A
Internal Doors	H.14	The minimum clear opening width of all internal doors is 750 mm	Pass	Fail	N/A
	H.15	If double doors are provided, the minimum clear opening width of one leaf of the doors is 750 mm	Pass	Fail	N/A
	H.16	There is swing protection for all doors that open into the circulation routes OR Otherwise, the doors are recessed	Pass	Fail	N/A
	H.17	All door furniture (handles, kicking plates and finger plates) contrasts visually with the surface of the door	Pass	Fail	N/A
	H.18	The internal door is capable of being operated in manual, powered and/or power-assisted mode	Pass	Fail	N/A
	H.19	Internal doors are clearly identifiable in terms of visual contrast with the surrounding wall	Pass	Fail	N/A

... Continued on next page

Horizontal Circulation Space - Conformance A						
Categories	Provisions: Mush-have items					
	H.20	The leading edge of all internal doors is visually contrasted and is clearly visible when open	Pass	Fail		N/A
	H.21	For glass doors that may be held open, they are protected with appropriate guarding to prevent people from colliding with the leading edge	Pass	Fail		N/A
	H.22	Glass door (within a glazed screen) are clearly differentiated from the adjacent glazed screen by a visually contrasting strip to the top and both sides of the door	Pass	Fail		N/A
	H.23	For glass doors that may be held open, they are protected with appropriate guarding to prevent people from colliding with the leading edge	Pass	Fail		N/A
Lobbies	H.24	Internal lobbies are apparently designed to allow easy maneuverability (1200 mm minimum space is preferred)	Pass	Fail		N/A
lighting	H.25	The minimum illuminance at floor surface level is 100 lux	Pass	Fail		N/A
Acoustics	H.26	The surfaces to the floor or walls must not adversely affect the acoustics	Pass	Fail		N/A

Horizontal Circulation Space - Conformance AA						
Categories	Provisions: Should-have items					
Corridors and Passageways	H.27	The a series of double doors of unequal width are provided along the circulation routes, the wider leaf is on the same side of the corridor throughout its length	Pass	Fail	Can't tell	N/A
Glazed walls, screens and doors	H.28	The manifestation is located at two levels: lower area: 850 mm - 1000 mm above from floor level upper area: 1400 mm - 1600 mm above from floor level	Pass	Fail	Can't tell	N/A
	H.29	Manifestation on glass doors is in the form of a logo or sign at least 150 mm high and repeated on adjacent screens OR Manifestation is provided in the form of a decorative feature such as broken lines or continuous bands at least 50 mm high	Pass	Fail	Can't tell	N/A
Internal Doors	H.30	There is a minimum 300 mm clear space beside the leading edge	Pass	Fail	Can't tell	N/A
	H.31	Door handles are lever style	Pass	Fail	Can't tell	N/A

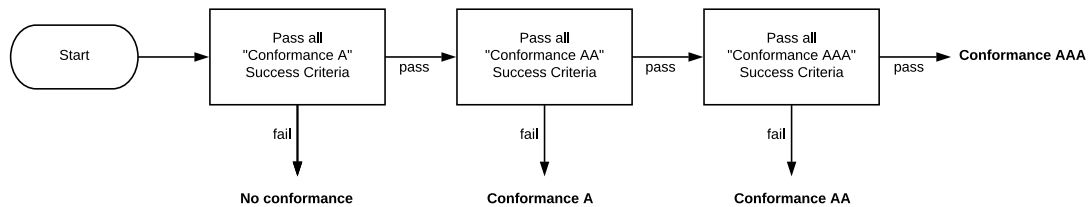
... Continued on next page

Horizontal Circulation Space - Conformance AA						
Categories	Provisions: Should-have items					
	H.32	Door and side panels wider than 450 mm are provided with minimum zones of visibility (vision panels) that extend between 500 mm and 800 mm above from floor level, and between 1150 and 1500 mm above from floor level	Pass	Fail	Can't tell	N/A

Horizontal Circulation Space - Conformance AAA						
Categories	Provisions: Could-have items					
Handrails	H.33	A handrail is provided along the length of the corridors	Pass	Fail	Can't tell	N/A
Internal Doors	H.34	Delayed action door closers are provided	Pass	Fail	Can't tell	N/A

Result: Space Classification

Direction: Follow the following flowchart and fill out the final result below.



Note 1: “Can’t tell” and “N/A” are not taken into account in the space classification.

Note 2: If there is “Can’t tell”, there will be a further inspection.

Space classification: _____

Section 6 Vertical circulation - Lifts

Task: Audit following requirements in Conformance A, AA, and AAA in the given area.

Direction: Circle Pass, Fail, Can't tell, N/A for each requirements in tables below.

Vertical circulation – Lifts Space - Conformance A						
Categories	Provisions: Mush-have items					
Lift Cars	VL.1	The entrance door to the lift has a clear opening width of at least 800mm	Pass	Fail		N/A
	VL.2	The floor surface inside the lift is firm	Pass	Fail		N/A
	VL.3	The floor surface inside the lift is slip-resistant	Pass	Fail		N/A
	VL.4	Flooring to the lift is light in color which is visually contrasted	Pass	Fail		N/A
Calling the lift	VL.5	The position of the lift landing and car doors are distinguishable visually from the adjoining walls	Pass	Fail		N/A
Using the lift	VL.6	The door remain open for at least 5 seconds	Pass	Fail		N/A
	VL.7	The door reactivating device operates on infrared or photo eye sensors	Pass	Fail		N/A
Contrast and Lighting	VL.8	The position of the lift is adequately identified using visual contrast and is well-illuminated	Pass	Fail		N/A
	VL.9	Minimum illuminance within the car is 100 lux	Pass	Fail		N/A
General	VL.10	The surface finishes used within the lift are not highly reflective	Pass	Fail		N/A
	VL.11	The surface finishes used within the lift do not create an unacceptable acoustic environment	Pass	Fail		N/A

Vertical circulation – Lifts Space - Conformance AA						
Categories	Provisions: Should-have items					
Lift Cars	VL.12	A handrail is provided on three sides inside the lift	Pass	Fail	Can't tell	N/A
	VL.13	The handrail can be easily gripped (32-50mm diameter or 50mm wide and 39mm deep)	Pass	Fail	Can't tell	N/A
	VL.14	The handrail is located at 900mm above from floor level	Pass	Fail	Can't tell	N/A
Calling the lift	VL.15	The position of the buttons to call the lift is logical	Pass	Fail	Can't tell	N/A
	VL.16	The call panel is clearly distinguishable in terms of visual contrast from its background	Pass	Fail	Can't tell	N/A
	VL.17	The buttons illuminate when pressed	Pass	Fail	Can't tell	N/A

... Continued on next page

Vertical circulation – Lifts Space - Conformance AA						
Categories	Provisions: Should-have items					
	VL.18	The buttons are place between 900mm and 1100mm above from floor level	Pass	Fail	Can't tell	N/A
	VL.19	The buttons are placed at least 500mm from any return wall	Pass	Fail	Can't tell	N/A
	VL.20	Lift arrival indication is given by using a text or a symbol	Pass	Fail	Can't tell	N/A
	VL.21	Lift arrival indication is given by audible sound	Pass	Fail	Can't tell	N/A
Using the lift	VL.22	The volume and clarity of the message is appropriate	Pass	Fail	Can't tell	N/A
	VL.23	The floor level arrived at is announced audibly and visually	Pass	Fail	Can't tell	N/A
Control within the lift	VL.24	The control panel is situated logically within the lift	Pass	Fail	Can't tell	N/A
	VL.25	Call or control buttons are located between 900mm and 1200mm above from floor level and at least 400 mm away from any return wall	Pass	Fail	Can't tell	N/A
	VL.26	Call buttons illuminate when pressed	Pass	Fail	Can't tell	N/A
	VL.27	Call buttons are not touch-sensitive	Pass	Fail	Can't tell	N/A

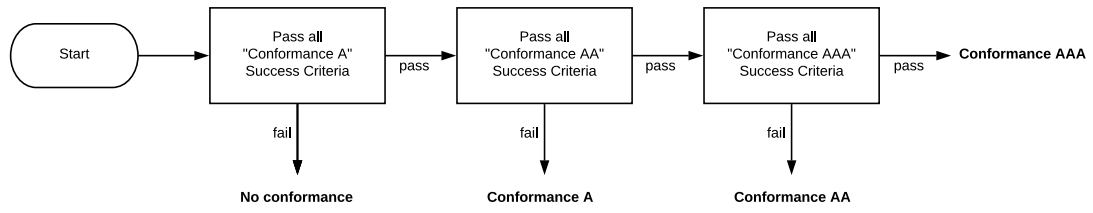
Vertical circulation – Lifts Space - Conformance AAA						
Categories	Provisions: Could-have items					
Calling the lift	VL.28	The information on the buttons is appropriately embossed (e.g. tactile)	Pass	Fail	Can't tell	N/A
Using the lift	VL.29	Audible warnings of the doors opening and closing are provided	Pass	Fail	Can't tell	N/A
	VL.30	Floor level indicators can be seen when the lift is full	Pass	Fail	Can't tell	N/A
	VL.31	Tactile and visual floor level indicators are provided outside the lift with clear visibility to user when the life door opens	Pass	Fail	Can't tell	N/A
Control within the lift	VL.32	Information on the call buttons is provided in Braille embossed at 1 mm	Pass	Fail	Can't tell	N/A

Result: Space Classification

Direction: Follow the following flowchart and fill out the final result below.

Note 1: “Can't tell” and “N/A” are not taken into account in the space classification.

Note 2: If there is “Can't tell”, there will be a further inspection.



Space classification: _____

Section 7 Vertical circulation - Stair

Task: Audit following requirements in Conformance A, AA, and AAA in the given area.

Direction: Circle Pass, Fail, Can't tell, N/A for each requirements in tables below.

Vertical circulation – Stair Space - Conformance A					
Categories	Provisions: Mush-have items				
Stairs	VS.1	The stairs are made up for a straight flight or flights of stairs	Pass	Fail	N/A
	VS.2	All of stairs are not spiral or contain a section which has winders	Pass	Fail	N/A
	VS.3	The stairs do not have open risers	Pass	Fail	N/A
	VS.4	Underside stair is protected to prevent user colliding with the stair	Pass	Fail	N/A
	VS.5	The minimum surface width of the stairs is 900 mm	Pass	Fail	N/A
	VS.6	The minimum width between handrails is 900 mm	Pass	Fail	N/A
	VS.7	No change in level is provided by a single step	Pass	Fail	N/A
	VS.8	There is a tactile warning surface or a change of floor color and texture at the head and foot of the stair that give adequate warning of the presence of the stairs	Pass	Fail	N/A
	VS.9	There is a clear landing of 900-1200 mm at the top of each flight	Pass	Fail	N/A
	VS.10	There is a clear landing of 900-1200 mm at the bottom of each flight	Pass	Fail	N/A
	VS.11	There is no door swing encroaches onto the landing area	Pass	Fail	N/A
	VS.12	The risers on each step are the same dimension	Pass	Fail	N/A
	VS.13	The thread on each step are the same dimension	Pass	Fail	N/A
	VS.14	The height of the risers are between 150 - 190mm	Pass	Fail	N/A
	VS.15	The going of each step is between 280 - 400 mm	Pass	Fail	N/A
	VS.16	The minimum headroom on stairs giving access between levels is 2000 mm	Pass	Fail	N/A
Handrail	VS.17	A handrail is provided to each side of the stair	Pass	Fail	N/A
	VS.18	The surface finish to handrails is not reflective	Pass	Fail	N/A
	VS.19	The handrail extends horizontally at least 300 mm beyond the first and last nosing in the flight	Pass	Fail	N/A
	VS.20	The handrail is continuous around landings (including intermediate landings)	Pass	Fail	N/A
	VS.21	The handrails are securely fixed to the supporting wall	Pass	Fail	N/A
Nosing	VS.22	There is no projecting nosing on the steps OR	Pass	Fail	N/A

... Continued on next page

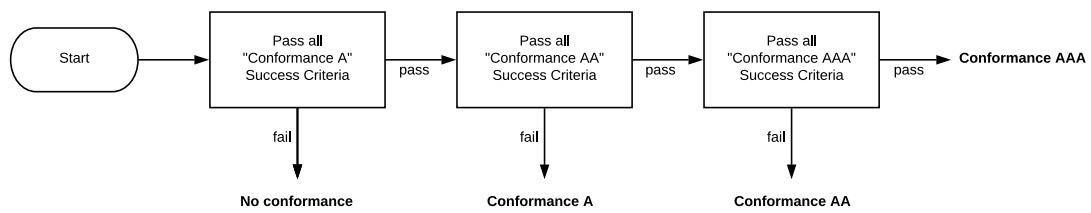
Vertical circulation – Stair Space - Conformance A						
Categories	Provisions: Mush-have items					
		Nosing on 25 mm is acceptable				
	VS.23	The nosing are in good order and securely fixed on the steps	Pass	Fail		N/A
	VS.24	The nosing must not present a tripping hazard or are in poor condition	Pass	Fail		N/A
Contrast	VS.25	The nosing on each step are visually contrasted	Pass	Fail		N/A
	VS.26	The contrast to the nosing can be seen when ascending and descending the stairs	Pass	Fail		N/A
Lighting	VS.27	Illuminance at tread/floor level is a minimum of 100 lux	Pass	Fail		N/A
	VS.28	The lighting is not provided in the riser of the steps	Pass	Fail		N/A
	VS.29	The lighting to the stairs is even	Pass	Fail		N/A
	VS.30	The lighting to the stairs must not cause glare or disorientation to users	Pass	Fail		N/A

Vertical circulation – Stair Space - Conformance AA						
Categories	Provisions: Should-have items					
Stairs	VS.31	A flight has no more than 16 risers	Pass	Fail	Can't tell	N/A
Handrail	VS.32	The handrail is between 32 mm - 50 mm diameter	Pass	Fail	Can't tell	N/A
		OR				
		The handrail is oval with dimensions between 50 mm wide and 39 mm deep				
	VS.33	The handrail can be easily gripped along its full length (meaning that it is smooth, no rough surface)	Pass	Fail	Can't tell	N/A
	VS.34	The handrail is made with easy and comfortable to grip, slip-resistant and smooth	Pass	Fail	Can't tell	N/A
	VS.35	On a wide flight of stairs (\geq 2000 mm), a central handrail is provided	Pass	Fail	Can't tell	N/A
	VS.36	There is a clear space 50 mm - 75 mm between handrail and the adjacent wall	Pass	Fail	Can't tell	N/A
	VS.37	There is a clear space of at least 50 mm between the underside of the handrail and any supporting wall	Pass	Fail	Can't tell	N/A
	VS.38	The top of the handrail is 900-1000mm above the nosing	Pass	Fail	Can't tell	N/A
Nosing	VS.39	Nosing extends between 50-65 mm on the treads	Pass	Fail	Can't tell	N/A
	VS.40	Nosing extends between 30-55 mm on the risers	Pass	Fail	Can't tell	N/A

Vertical circulation – Stair Space - Conformance AAA						
Categories	Provisions: Could-have items					
Tactile Information	VS.41	Tactile information indicating floor levels is provided on the handrails	Pass	Fail	Can't tell	N/A
	VS.42	Tactile information indicating floor destination is provided on the handrails	Pass	Fail	Can't tell	N/A

Result: Space Classification

Direction: Follow the following flowchart and fill out the final result below.



Note 1: “Can’t tell” and “N/A” are not taken into account in the space classification.

Note 2: If there is “Can’t tell”, there will be a further inspection.

Space classification: _____