

Effect of Cavity Flow Control on High Speed Train Pantograph and Roof Aerodynamic Noise

Hogun Kim^a, Zhiwei Hu^a, David Thompson^b

^a*Aerodynamics & Flight Mechanics Research Group, University of Southampton, Southampton, SO17 1BJ, United Kingdom*

^b*Institute of Sound and Vibration Research Dynamics Group, University of Southampton, Southampton, SO17 1BJ, United Kingdom*

Abstract

The pantograph and its recess on the train roof are major aerodynamic noise sources on high-speed trains. Reducing this noise is particularly important because conventional noise barriers usually do not shield the pantograph. However, less attention has been paid to the pantograph recess compared with the pantograph. In this paper, the flow features and noise contribution of two types of noise reduction treatments rounded and chamfered edges are studied for a simplified high speed train pantograph recess, which is represented as a rectangular cavity and numerically investigated at 1/10 scale. Improved Delayed Detached-Eddy Simulations are performed for the near-field turbulent flow simulation and the Ffowcs Williams & Hawkings aeroacoustic analogy is used for far-field noise prediction. The highly unsteady flow over the cavity is significantly reduced by the cavity edge modifications and consequently, the noise radiated from the cavity is reduced. Furthermore, effects of the rounded cavity edges on the flow and noise of the pantographs (one raised and one folded) are investigated by comparing the flow features and noise contributions from the cases with and without rounding of the cavity edges. Different train running directions are also considered. Flow analysis shows that the highly unsteady flow within the cavity is reduced by rounding the cavity edges and a slightly lower flow speed occurs around the upper parts of the raised pantograph, whereas the flow velocity in the cavity is slightly increased by the rounding. Higher pressure fluctuations occur on the folded pantograph and the lower parts of the raised pantograph, whereas weaker fluctuations are found on the panhead of the raised pantograph. This study shows that by rounding the cavity edges, a reduction in radiated noise at the side and the top receiver positions can be achieved. Noise reductions in the other directions can also be found.

Keywords: High-speed train, Aeroacoustics, Pantograph, Pantograph recess, Cavity flow, Noise control

Email addresses: hklg14@soton.ac.uk (Hogun Kim), z.hu@soton.ac.uk (Zhiwei Hu), djt@isvr.soton.ac.uk (David Thompson)

1. Introduction

The aerodynamic noise of high speed train becomes significant when the train is operated above about 300 km/h [1]. Pantographs and the pantograph recess are recognized as significant contributors to aerodynamic noise for high speed train [1, 2, 3, 4]. Studies of pantograph noise have provided insight into the noise generation mechanisms and methods of noise reduction [5, 6, 7].

Grosche et al. [8] carried out experiments to investigate the noise source distribution of a full-scale DSA350 pantograph. They identified three areas, the foot, the panhead and the knee connector, as the main noise sources. Lölgen [9] performed tests in a wind tunnel for full-scale DSA350SEK, ASP and PS206 pantographs at flow speeds up to 400 km/h. Strong tonal peaks in the radiated noise spectra were found and linked to vortex shedding from the contact strip, the horn and the stroke limiting cage. Lauterbach et al. [10] performed aeroacoustic experiments in a wind tunnel using a 1/25 scale model of the ICE 3 train. They found that the pantograph generated strong tonal components which dominated the noise spectrum for frequencies above 5 kHz (200 Hz at full scale) [10]. Zhang et al. [12] performed numerical simulations for a full-scale DSA380 pantograph at a speed of 350 km/h using Large Eddy Simulation (LES) for the flow field and FW-H acoustic analogy for the far-field pressure. Three peaks, at 305, 608 and 913 Hz, were found in the noise spectrum of the pantograph panhead at the top receiver position. They indicated that the first peak is associated with the oscillation of the lift force of the panhead contact strip and the second peak is generated by the interaction between the wake from the panhead contact strip and horn bush, and the panhead support. They also compared different running directions of the train with the pantograph knee either downstream or upstream.

Several experimental and numerical studies have been performed to study the flow and acoustic features of the pantograph recess [13, 14]. Noh et al. [13] carried out noise tests for a full-scale Korean high-speed train (KTX). They found that the noise from the recess was at similar level to that from the pantograph at a speed of 300 km/h. Noger [14] performed experiments to investigate the aerodynamic and acoustic features of the Train Grande Vitesse (TGV) pantograph recess and found that the trailing edge region of the recess was a major noise source. Interactions between the wake of the pantograph and the shear layer cause lower turbulent intensity in the downstream region of the cavity. High turbulent intensity was identified at the upstream region of the recess due to interaction between shear layer from the cavity leading edge and pantograph.

Niu et al. [15] carried out numerical investigations of the ow features with two different train nose length for a three-

coach 1/8 scale at a speed of 60 m/s. They found that there was no significant effect of leading coach nose on the boundary layer thickness of the train roof, whereas the long nose length reduced the boundary layer thickness of the side of the train. Furthermore, the boundary layer of the trailing coach had a thicker thickness boundary layer than that of the leading coach. Carnevale et al. [16] studied the effect of aerodynamics lift force on the mean contact force acting between the contact wire and a raised pantograph using a numerical method. They indicated that when the pantograph was installed on a middle coach, the flow speed in the upper arm and the panhead region of the pantograph is approximately 20% lower than the speed in the wind tunnel test, which has a significantly thin boundary layer.

A simplified pantograph recess can be considered as a 'closed' cavity (length-to-depth $L/D = 10$ [17]. Plentovich [17] stated that the boundary between transitional and closed cavity flows was not clearly seen due to a strong dependency on the Mach number, L/D and the width of the cavity. However, the closed cavity flow appeared above from about $L/D \geq 9$ up to $L/D \geq 15$. Ng [18] classified cavity flow regimes at a very low Mach number ($M = 0.029$). He reported transitional-closed at $10 < L/D < 15$ and closed cavity flow for $15 < L/D$. Generally, the high speed train pantograph recess has L/D approximately equal to 11.

Investigations of cavity flow at low speed have been conducted to predict and reduce noise from aircraft landing gears, and automobile sunroof cavities. Wang et al. [19] investigated the mechanism of buffeting noise from an automobile sunroof with a simplified cavity model using CFD at speeds between 15 m/s and 50 m/s and carried out wind tunnel tests at speeds of 15 to 25 m/s. They found that the sunroof buffeting noise is likely to be an open cavity noise mechanism. The sunroof buffeting noise occurs due to the periodicity of flow separation and vortex shedding from the leading edge of the cavity and vortex impingement on the cavity trailing edge. A study aimed at reducing open cavity noise was carried out numerically at Mach number 1.5 and 2.5 by Zhang et al. [20]. They modelled two types of cavity leading edge modifications (compression ramps and an expansion surface). They showed that the compression ramp of the cavity leading edge reduced the SPL on the cavity wall at Mach number 2.5, but the change in SPL was negligible at Mach number 1.5. When the leading edge was modified as an expansion surface, the SPL on the cavity wall was reduced at both Mach numbers.

Noise reduction treatments for a closed cavity (such as the pantograph recess) have not been considered to the same extent. Therefore, this paper aims to investigate an efficient technique to control the cavity flow for the purpose of noise reduction. As most noise is generated by the shear layer from the leading edge and trailing edge of the cavity,

the effects of modifications to the leading edge and the trailing edge are investigated. Furthermore, the effect of the modified cavity flow on the pantographs is investigated.

The paper is structured as follows: Section 2 provides the geometry of the cavity modification and details of the grid generation. The numerical methodology and the computational set-up are provided in Section 3. Section 4 presents the computational flow field results of the modified cavity, while far-field pressure results are presented in Section 5. In Sections 6 and 7, the aerodynamic and acoustic simulations of the best case of the modified cavity are presented with pantographs introduced. Finally, conclusions are summarised in Section 8.

2. Numerical methods and computational set-up

The simulations were performed using the commercial CFD package, STAR-CCM+. For flow field prediction, the three-dimensional unsteady incompressible Navier-Stokes equations were solved using the IDDES with Spalart-Allmaras turbulence model [25, 26, 27]. The dipole source of the Ffowcs Williams & Hawkings (FW-H) equation is collected after the simulation have been statistically steady and the Farassat's formulation 1A is used to predict the far-field acoustic pressure [28, 29, 30].

2.1. Cavity near-field validation

The numerical results of the pressure coefficient C_p on the floor of a clean cavity are validated against measurements of Plentovich et al. [17], who investigated effects of the cavity length-to-depth ratio L/D on the cavity wall pressure distribution at Mach numbers of 0.2 to 0.95 using a transonic wind tunnel.

To validate the current calculations, the case of a cavity with $L/D = 12$ ($L = 0.731\text{m}$ and $D = 0.061\text{ m}$) and width-to-depth $W/D = 4$ at a Mach number $M = 0.2$ [17] was chosen because the geometry size and flow speed are similar to the current study. The simulations are carried out with different meshes and compared with the experimental data [17].

The computational domain is shown in Figure 1. It extends $12D$ upstream of the cavity to allow boundary layer to develop to have approximately the same thickness ($\delta = 0.011\text{ m}$) at the cavity leading edge as in the experiment ($\delta = 0.0125\text{ m}$) [17]. It was checked after the simulation was done. Furthermore, the domain extends $48D$ downstream of the cavity, $8D$ laterally from the cavity side edge to each domain side and $16D$ vertically.

For the boundary conditions of the simulations, all walls of the cavity and the floor are defined as non-slip wall

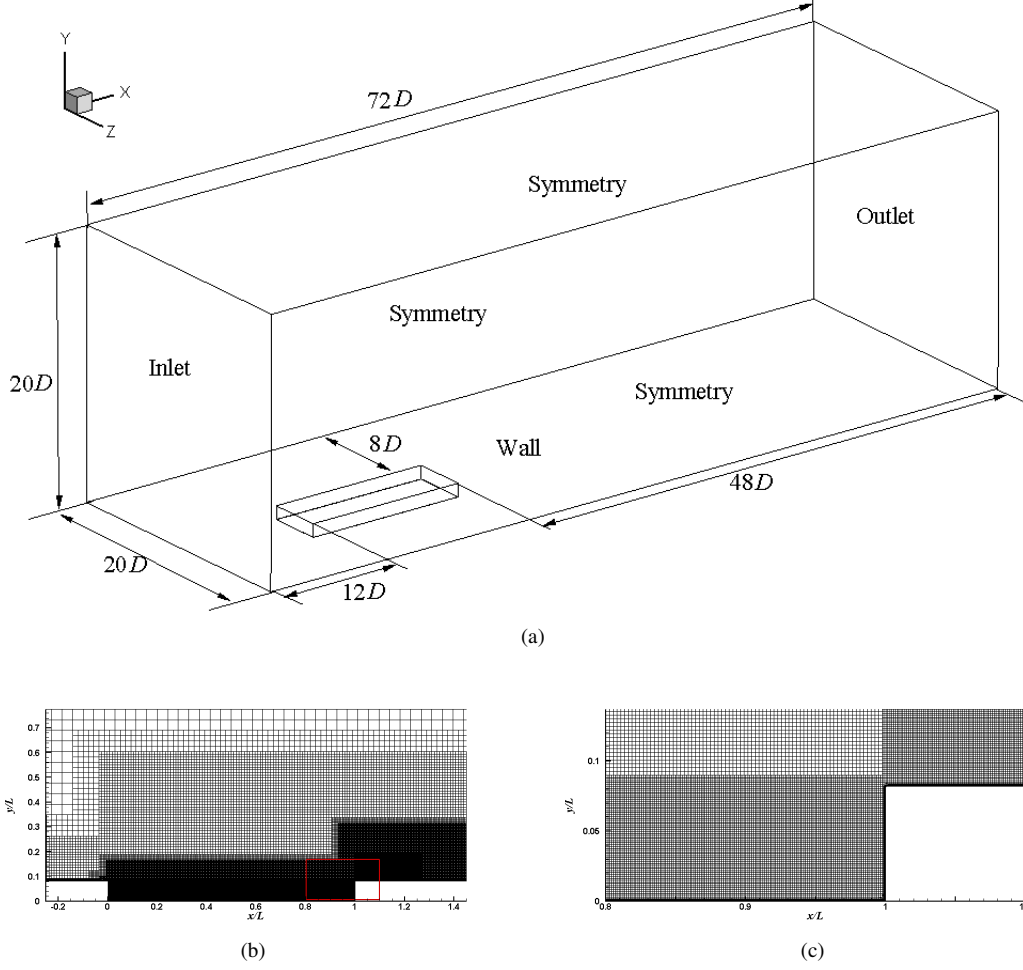


Figure 1: Computational domain and boundary conditions (a) for validation study [17] (not to scale) and overview (b) and detail (c) of the meshes for the cavity model i.e. aspect ratio 100.

conditions; Symmetric boundary conditions are applied to the two side and top of the domain. An outflow boundary with pressure outlet is defined at the downstream boundary. A velocity inlet was set at the inflow with a freestream Mach number of 0.2 (speed 70.2 m/s) corresponding to a Reynolds number of 1.8×10^5 based on the cavity depth.

Several mesh refinement zones are set in regions where flow field is expected to change more rapidly, such as the

trailing edge region. Different cell sizes are applied for each refinement zone. For the purpose of a mesh dependence

study, four meshes were generated with different mesh densities. The mesh dependence study strategy is that Δy , the first cell height from the wall, is kept constant whereas Δx and Δz , the cell lengths in the x -direction and the z -direction respectively, are reduced. The ratios $(\Delta x, \Delta z)_{max} / \Delta y$ and cell number are listed in Table 1 for each mesh. The first layer non-dimensional wall distance y^+ ($y_1^+ \equiv \frac{u_* y_1}{\nu}$, where u_* is the friction velocity, y_1 is the distance

of the first grid point to the wall, and ν is the kinematic viscosity) is smaller than 1.0 and a grid stretching ratio of 1.12

in the wall normal direction is used.

A non-dimensional time step $U\Delta t/D = 0.0095$ is used, where D is the depth of the cavity and Δt is time step ($\Delta t = 8 \times 10^{-6} s$), which ensures that the CFL number ($CFL = \frac{u\Delta t}{\Delta x}$, where u is the freestream velocity, and Δx is the grid size in streamwise direction) is less than 1 for all cases.

95 The mean coefficients of the surface pressure on the cavity floor obtained using the four meshes are compared with the experimental data of Plentovich et al. [17] in Figure 2. As the maximum mesh aspect ratio ($\Delta x / \Delta y$, $\Delta z / \Delta y$) is reduced, the pressure distribution converges to the measurement data. The distributions from the meshes with maximum cell aspect ratios 200 and 120 are in good agreement with the experimental data. It is concluded that the current numerical procedure is able to give accurate prediction for flow over a cavity with adequate mesh resolution.

100 Simulations conducted in the remainder of this paper use meshes generated with similar resolution as the mesh with aspect ratio $\Delta x, \Delta z / \Delta y = 200$.

Table 1: Mesh criteria for each cases for the cavity model.

	Coarse			Fine
$(\Delta x, \Delta z)_{\max}/\Delta y$	670	400	200	120
Total number of cells	4 million	6 million	26 million	30 million

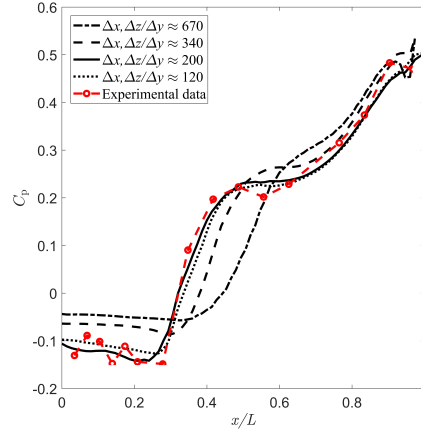


Figure 2: Comparison of the cavity floor pressure distributions at $M = 0.2$ from computational results using different meshes and experimental data [17].

2.2. Cavity geometry

The studied cavity geometry is chosen to represent a simplified pantograph roof cavity of a TGV train at 1/10 scale. The pantograph cavity is simplified to a rectangular cavity with dimensions length $L = 0.812$ m, depth $D = 0.07$ m and width $W = 0.29$ m, giving $L/D = 11.5$, $W/D = 4.1$. The cavity is modified by sloping the upstream and downstream surfaces while retaining a fixed depth D (Figure 3(a)). The angle θ is varied from 30° to 75° . In an alternative approach, the cavity leading and trailing edges are rounded with a radius h as shown in Figure 3(b) with the ratio h/D varying from 0.2 to 0.8. The modifications are the same for both edges as trains operate in both directions.

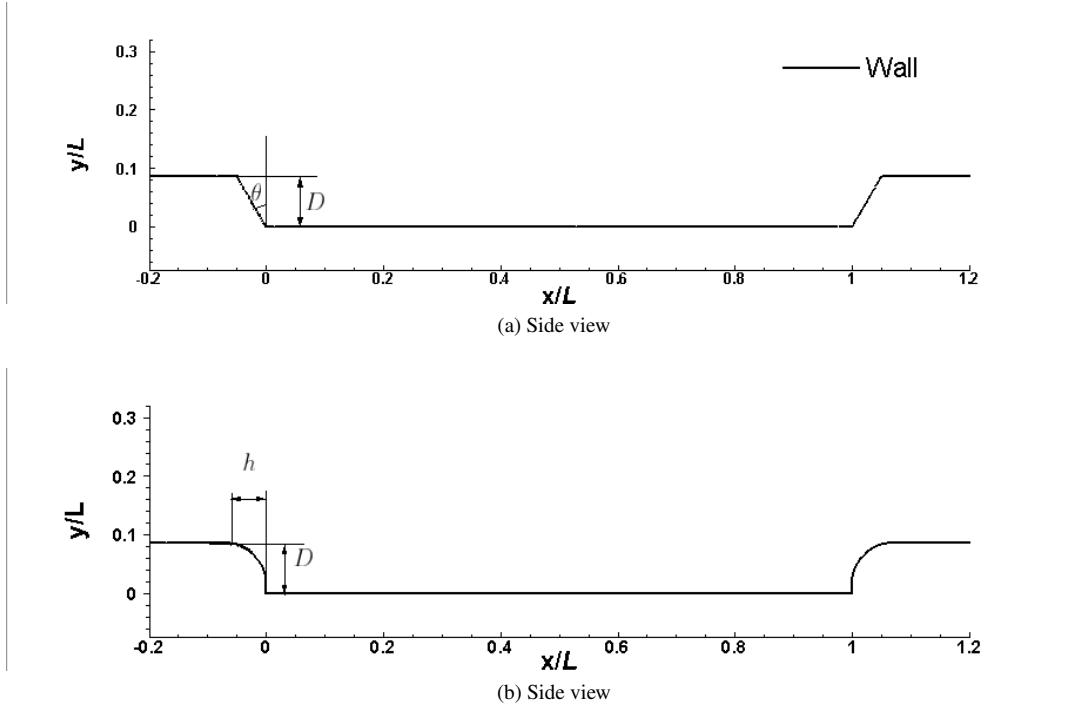


Figure 3: Description of the geometry.

2.3. Numerical test section

The computational domain is illustrated in Figure 4. It has dimension of $71.5D$, $29D$ and $4.1D$ along the stream-wise (x), vertical (y) and spanwise (z) directions, respectively. No-slip wall conditions are applied to the cavity walls, while symmetry conditions are used for the top boundary and a pressure outlet is imposed at the outlet boundary. Periodic boundary conditions are applied to the two side surfaces of the domain. The inflow boundary is set as a velocity inlet with incoming flow velocity $U_\infty = 83.3$ m/s (300 km/h). A hexa-dominated mesh, generated using the STAR-CCM+ mesh generator, is used with several refinement zones. Different cell sizes are specified for each refinement

zone. The region of the cavity trailing edge is refined with a cell size of 1.2 mm and a surface growth rate of 1.1 is applied. The non-dimensional cell size perpendicular to the wall y_1^+ is less than 1 on all wall surfaces. The cell aspect ratio near the wall is 200 ($\Delta x / \Delta y, \Delta z / \Delta y = 200$) as validated in the previous Section. Details of the mesh around the cavity edges are shown in Figure 5 and the numbers of cells for all cases are listed in Table 2. A non-dimensional time step is $U \Delta t / D = 0.0095$, where D is depth of the cavity. The Reynolds number is $Re = 3.9 \times 10^5$ based on the cavity depth and the inflow velocity.

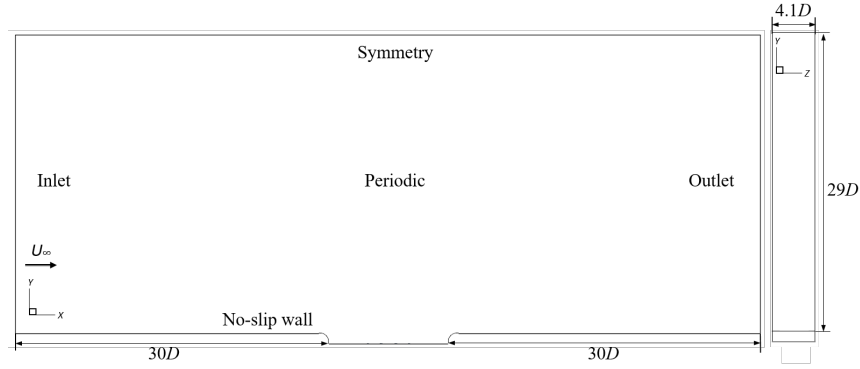


Figure 4: Computational domain and boundary conditions.

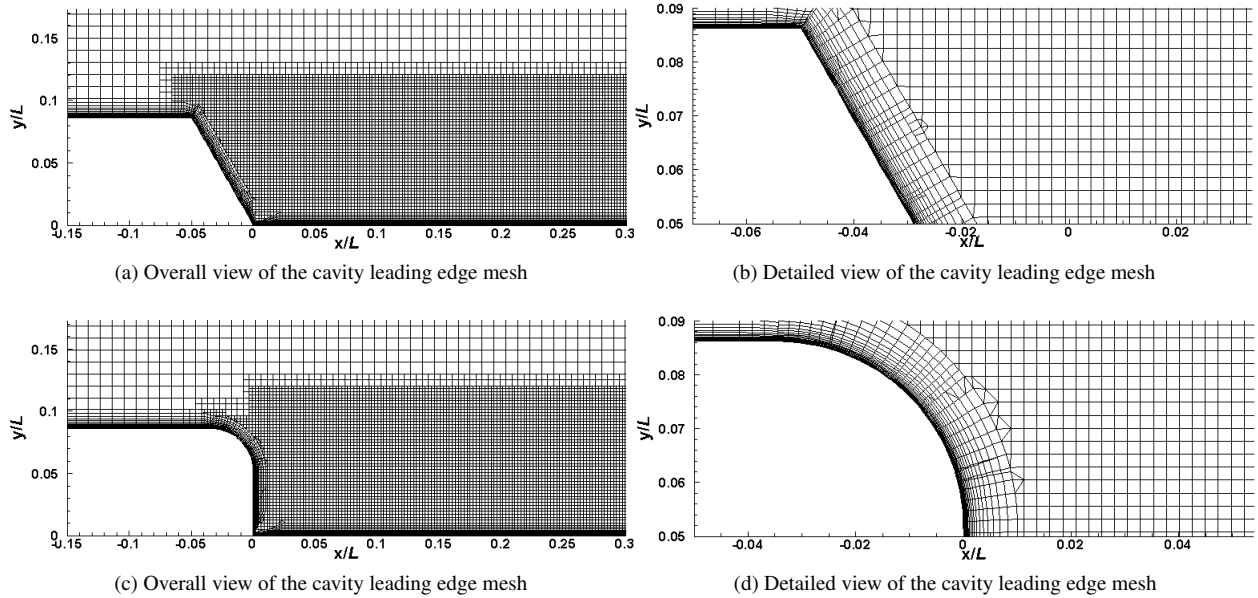


Figure 5: Overview and details of the meshes.

Table 2: The grid for each cases.

Simulation cases		Number of cells
Baseline		7.1 million
Rounded edge cases	$h/D = 0.2$	7.3 million
	0.4	7.3 million
	0.6	7.4 million
	0.8	7.5 million
Sloped edge cases	$\theta = 30^\circ$	7.4 million
	45°	7.6 million
	60°	7.9 million
	75°	8.1 million

3. Aerodynamic results for the modified cavities

3.1. Forces

The coefficients of lift C_L and drag C_D are shown in Figure 6 for the cavity with rounded (h/D cases) and sloped edge (θ cases) treatments. Both the mean and the root-mean-square values are shown for each coefficient. The reference area for the force coefficients is the cavity cross-section $W \times D = 0.0196 \text{ m}^2$. The force coefficients were calculated after 0.05s when the flow was deemed to be statistically steady from the force coefficient time histories. The coefficient data were then collected at each time step for another 0.2s.

The treatment of the leading and the trailing edges of the cavity induces changes in the force coefficients. Both treatments show a reduction in the mean drag coefficient $\overline{C_D}$ with reductions of 54% for $h/D = 0.8$ and 20% for $\theta = 60^\circ$, compared with the baseline case. The mean lift coefficients $\overline{C_L}$ show negative values for all cases. When the cavity edges are rounded, the negative mean lift coefficient is reduced by 34%, compared with the baseline case and it remains almost constant for all values of h/D . The sloped edges cases also show a reduction in the negative mean lift coefficient, by 17% for $\theta = 30^\circ$, 45° and 60° and 10% for $\theta = 75^\circ$.

In all cases, the rms lift coefficient (C_L^{rms}) is much higher than the rms drag coefficient (C_D^{rms}). Both treatment methods of the cavity edges reduce the fluctuating lift and drag forces considerably. The largest reductions are the rounded edges. For $h/D = 0.8$, the fluctuating lift and drag forces are reduced by 89% and 88%, respectively, compared with the baseline case.

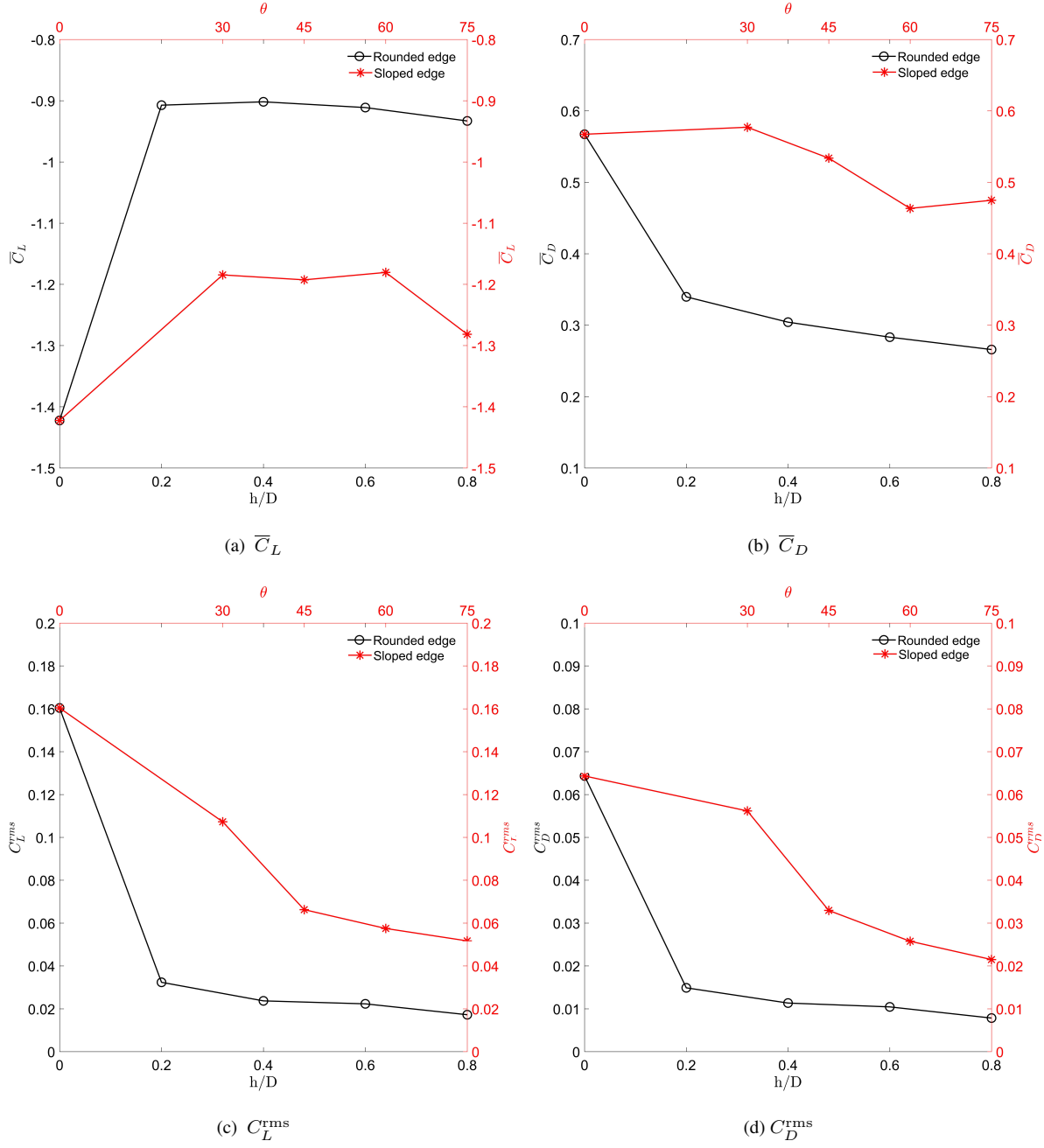
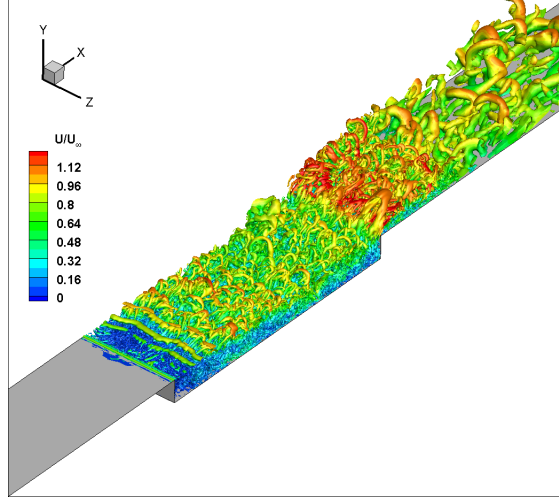
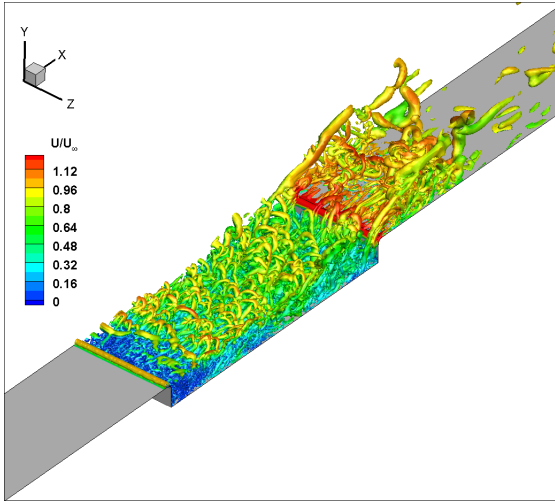


Figure 6: Force coefficients for different cavity edge treatment cases.

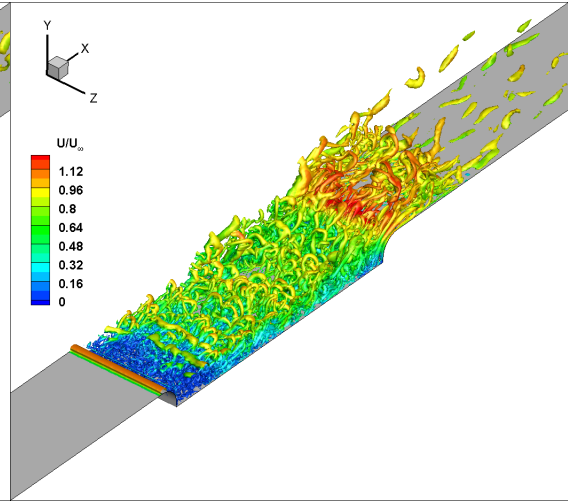
Figure 7 shows three-dimensional instantaneous flow features around the cavity based on the Q -criterion as normalised Q ($Q_{\text{norm}} = \frac{QD^2}{U_\infty^2}$), the second invariant of the velocity gradient [31]. The iso-surfaces are coloured by the instantaneous velocity magnitude. For the baseline configuration shown in Figure 7(a), the incoming flow separates immediately at the cavity leading edge, and Kelvin-Helmholtz (K-H) instabilities develop in the separated shear layer which leads to a highly turbulent flow occurs in the cavity region. Another highly unsteady flow region is seen at the cavity trailing edge and aft cavity wall region. When the cavity edges are rounded, the highly turbulent flow generated at the trailing edge of the cavity is significantly reduced as shown in Figure 7(b) for $h/D = 0.2$ and 7(c) for $h/D = 0.8$ (the other two cases show similar trend, therefore are not shown). This can also be seen in the turbulence kinetic energy as shown in Figure 8. It can effectively diminish the unsteady flow in this region even when the trailing edge is only slightly modified (see Figure 7 (b)). Furthermore, the shear layer from the cavity leading edge is weakened by the rounding. Results for the sloped cavity walls are shown in Figure 7(d) and (e). Here also the highly unsteady flow is reduced. However, the reduction of the turbulent flow generated by the cavity trailing edge much smaller than for the cases with the rounded cavity edges. The strength of the shear layer from the leading edge is similar to the baseline case.



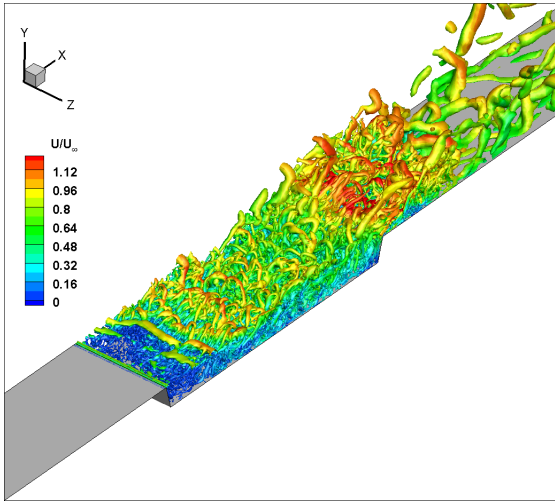
(a) Baseline



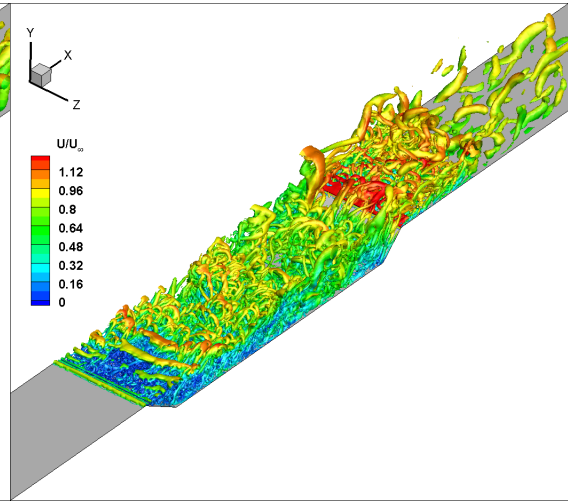
(b) $h/D = 0.2$



(c) $h/D = 0.8$



(d) $\theta = 30$



(e) $\theta = 75$

Figure 7: Flow structure demonstrated by iso-surface of Q-criterion $Q_{\text{norm}}=2.5$.

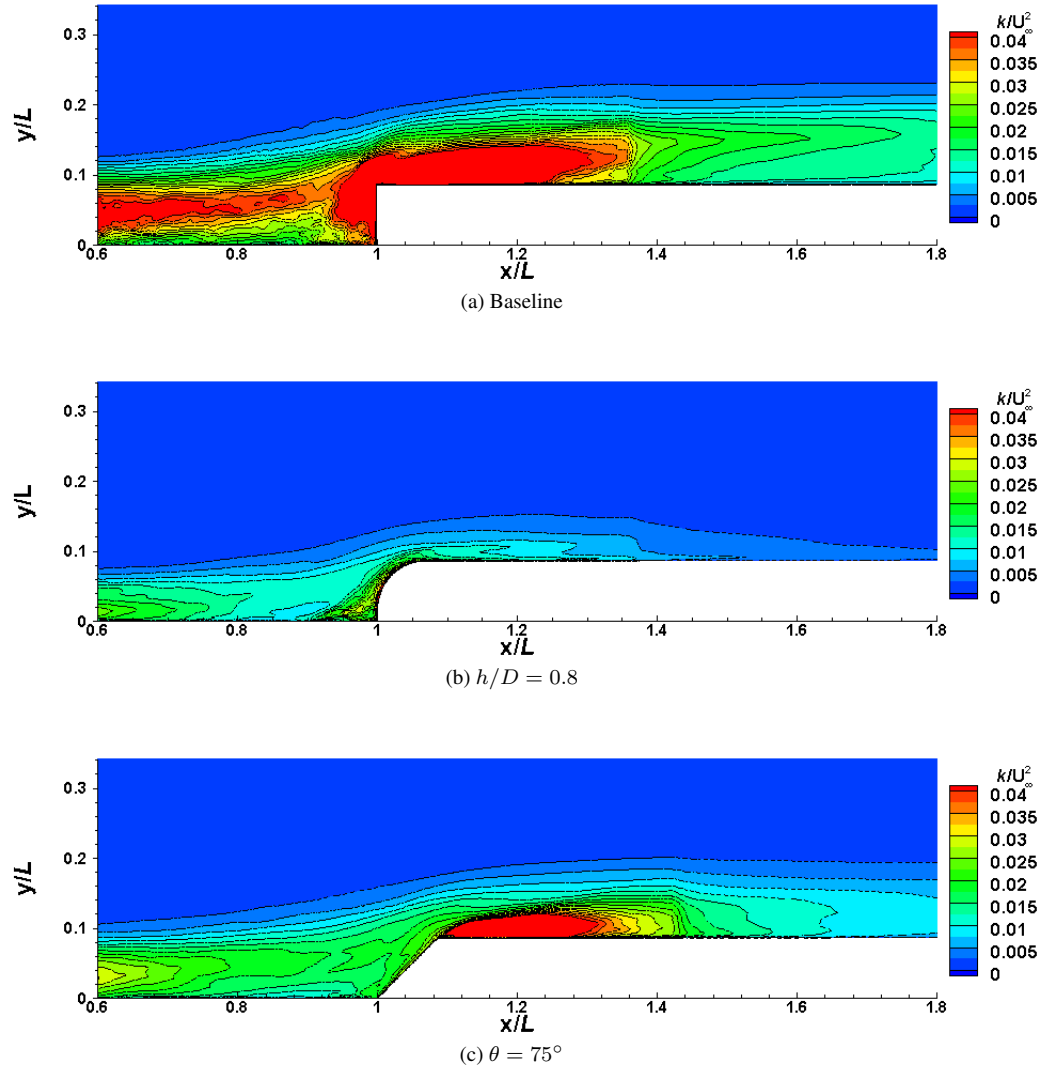


Figure 8: Comparison of turbulence kinetic energy for the baseline (a), $h/D = 0.8$ (b) and $\theta = 75^\circ$ (c) in the cavity trailing edge region.

3.3. Time-averaged velocity field

Figure 9 displays contours of the time-averaged streamwise velocity with two-dimensional sectional streamlines at the mid-span plane. For the baseline cavity shown in Figure 9(a), the incoming flow separates from the leading edge of the cavity and develops a shear layer, which impinges around $x/L = 0.6$ on the cavity floor. This introduces a recirculation region behind the upstream wall of the cavity between $x/L = 0$ and $x/L = 0.6$. When the cavity edge is rounded, this recirculation region becomes smaller and the shear layer impingement point moves upstream. For $h/D = 0.2$, the impingement point occurs at $x/L = 0.48$. The point moves continuously closer to the upstream wall and reaches $x/L = 0.4$ for $h/D = 0.8$. A similar flow pattern can be seen in the sloped edge cases. By increasing the angle θ , the shear layer impingement point moves upstream and the recirculation region becomes smaller. However, the change is not as significant as for the rounded edge cases. Another recirculation occurs in the vicinity of the trailing edge. The flow separated from the cavity trailing edge reattaches on the cavity aft wall at $x/L = 1.1$. This recirculation is eliminated for all rounded trailing edge cases, whereas it is only eliminated for sloped edge cases at large angles ($\theta = 60^\circ$ and 75°), and is reduced in size for the other sloping angles. The strong unsteady flow with recirculation zone can be used to determine potential noise source. Therefore, when the recirculation zone is reduced, the reduction of the noise may be archived. The cavity edge treatments reduce unsteady flow from the cavity and the effect of these flow field changes on the far-field noise will be quantified in Section 4.

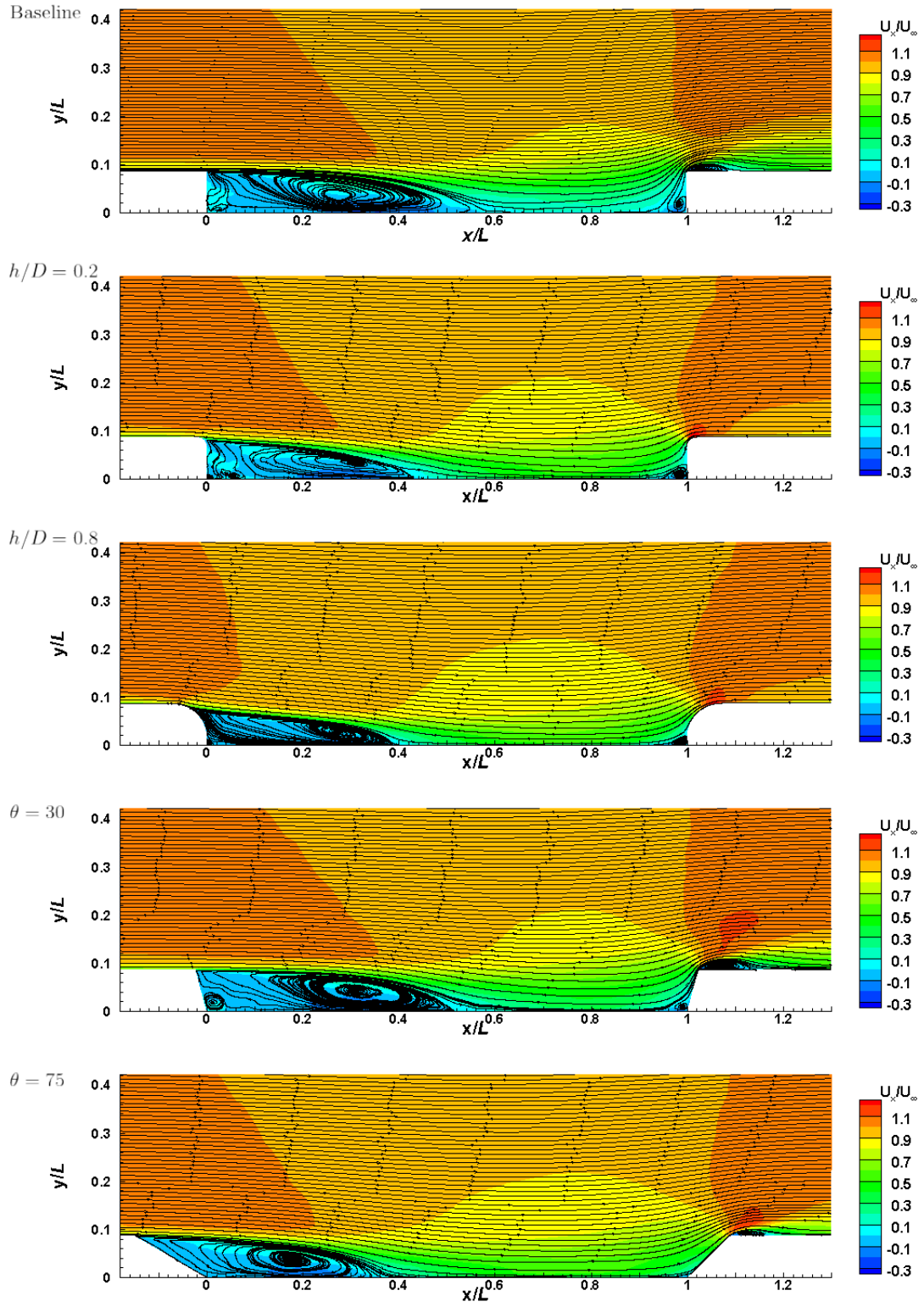


Figure 9: Mean streamline with time-averaged velocity contours.

4. Aeroacoustic results for the modified cavities

The radiated noise is predicted for two far-field receivers, located 2.5 m away from the centre of the cavity at the side and at the top. The far-field pressure sampling frequency was 125 kHz and a Hanning window with 50% overlap was used to determine the spectra [32]. All spectra are converted to full scale frequencies and amplitudes according to the following equation [33]:

$$L(f) = L_m(f_m) + 10\log\left(\frac{r_m D}{r D_m}\right)^2 + 10\log\left(\frac{U_\infty}{U_{\infty,m}}\right)^n \quad (1)$$

where f is the frequency, $L(f)$ is sound pressure level at frequency f , D is a characteristic length of the model, r is the distance between the sound source and the observer, U_∞ is the flow speed and n is the speed-dependent exponent of the sound power, and is taken as $n = 5.8$ for the current low Mach number cases [11]. The values with subscript m represent values for the scale model. The full-scale frequency f can be obtained from the following equation:

$$St = \frac{fD}{U_\infty} = \frac{f_m D_m}{U_{\infty,m}} \quad (2)$$

The spectra are presented in one-third octave bands.

The spectra of the radiated sound pressure from the cavity at the side receiver are plotted in Figure 10. There are no strong tonal components, which is expected for a classic closed cavity [14]. By rounding the cavity edges, the SPLs are reduced in the low frequency region below about 630 Hz, but they are unaffected at high frequency as shown in Figure 10 (a) and (b). Similarly, the spectra of the radiated noise from the sloped edge configurations become lower in the low frequency region as the angle θ is increased. However, the spectra of the noise for $\theta = 60^\circ$ and 75° are similar. These reductions are not as significant as for the rounded edge cavity configurations. The variation of spectra at the top receiver is similar, therefore, not shown in here.

The OASPLs, calculated by integrating the spectra over frequency up to 2000 Hz, are given in Table 3. Compared with the noise levels for the baseline case, the case with rounded edges with $h/D = 0.8$ shows a reduction of 15.2 dB for the receiver at the side, and of 12 dB for the receiver at the top. The noise levels for the sloped edge with $\theta = 75^\circ$ are reduced by approximately 5.3 dB at the side, and 7.2 dB at the top compared with the baseline case. The rounded cavity edges with $h/D = 0.8$ have the largest effect on the noise from the cavity.

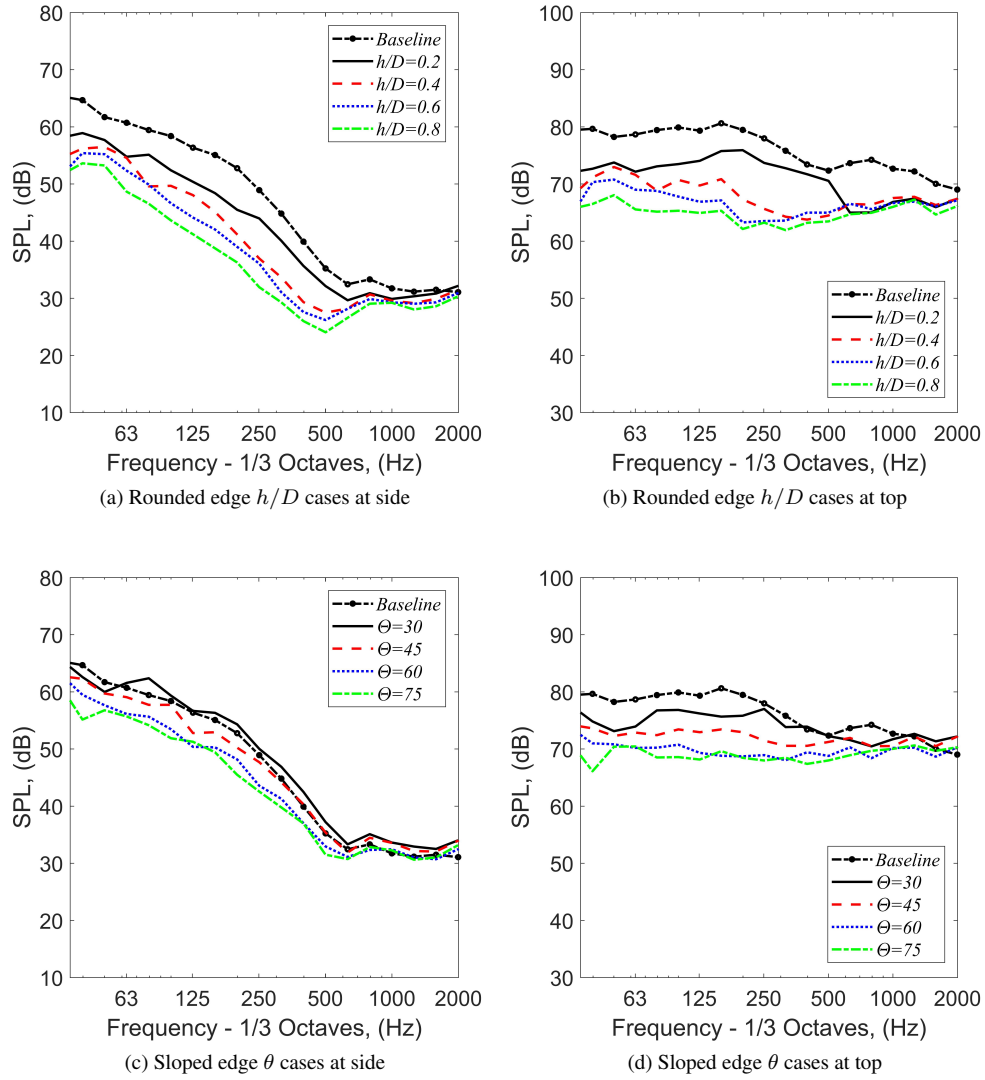


Figure 10: Sound pressure levels at the side receiver.

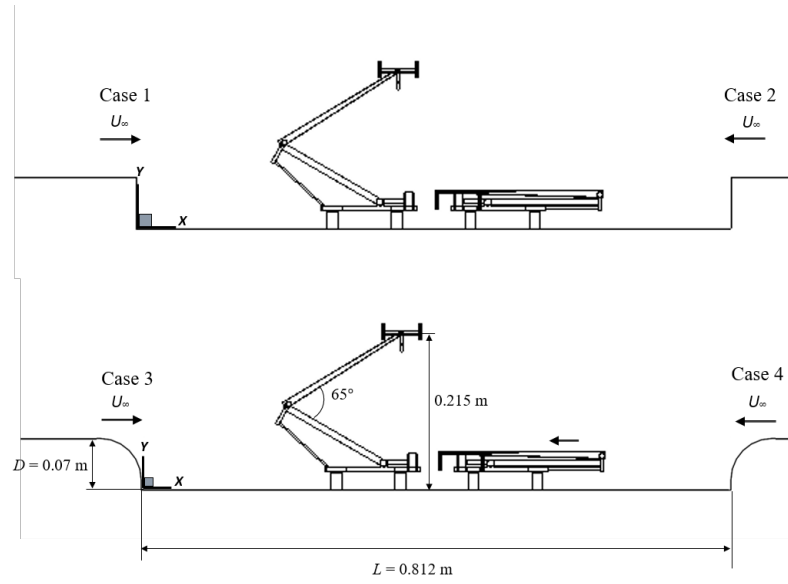
Table 3: OASPL at the side and the top receiver positions.

Simulation cases		Side (dB)	Top (dB)
Baseline		75.4	91.0
Rounded edge cases	$h/D = 0.2$	66.3	85.6
	0.4	63.9	82.2
	0.6	62.0	80.6
	0.8	60.2	79.0
Sloped edge cases	$\theta = 30^\circ$	72.8	89.1
	45°	70.6	86.5
	60°	69.8	85.2
	75°	67.9	83.8

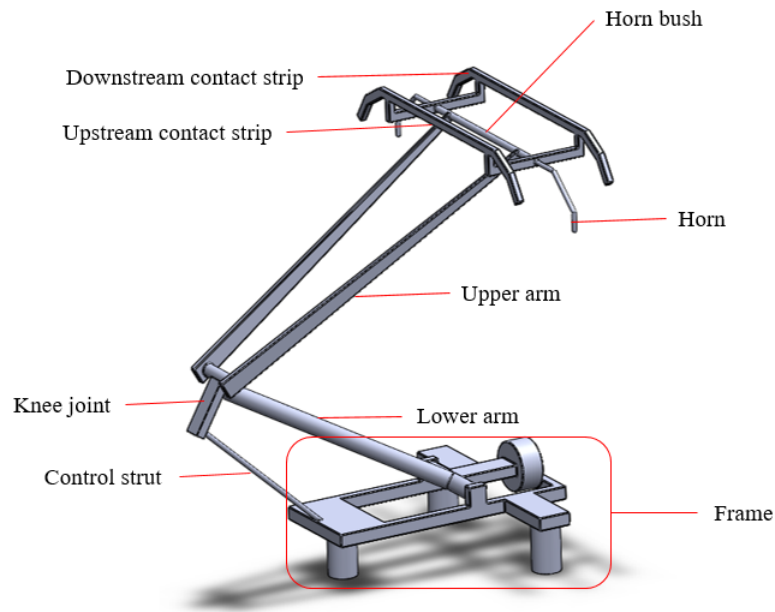
5. Effect of the cavity geometry on pantograph noise

5.1. Geometry

The influence of the cavity edge treatments on the flow and noise of the pantographs is investigated here. In the previous Section, the rounded case with $h/D = 0.8$ shows the lowest level of the noise from the cavity. This modification for the cavity is therefore chosen to investigate effects of the modified cavity on pantograph aerodynamic noise. Two 1/10 scale DSA 350 pantographs (one raised and one folded) are installed inside the modified. Two cavity and these cases (cases 3 and 4) are simulated considering different train running direction and compared with a cases (cases 1 and 2) of the same pantographs installed in a rectangular cavity. Furthermore, the effects of the train running direction are investigated. The freestream direction is set as the positive x -direction for cases 1 and 3, and as the negative x -direction for cases 2 and 4, as shown in Figure 11(a). In this study, it is assumed that the pantographs and the recess are installed on the top of the leading coach and the effect of leading coach nose on boundary layer is negligible [15]. Furthermore, as thin boundary layers occur on the leading coach roof, the flow does not influence the flow speed around upper part of raised pantograph including panhead [16]. The pantograph shown in Figure 11(b) is simplified by keeping all the large and medium parts and only removing the small parts, such as straps and springs as given in a detailed in Table 4.



(a) Side view



(b) Overview of the raised pantograph

Figure 11: Description of the geometry

Table 4: List of retained and omitted parts

Regions	Retained parts	Removed parts
Panhead	Contact strip, horn bush, horn	Straps, head lowering, spring,
Upper arm	Upper arm, knee joint	Guide head, wire arms
Lower arm	Lower arm, control strut	

5.2. Numerical test section

The computational domain size and boundary conditions are identical with the previous cavity cases as shown in Figure 4. A Hexa-dominated mesh is also used for the pantographs. Different cell sizes are specified for each refinement zone. The panhead regions are refined with a minimum cell size of 0.4 mm and several refinement zones are used for the pantograph components and wake regions. The total number of cells used for each case is listed in Table 5. It is verified that y_1^+ is less than 1 on all surfaces. As before, a non-dimensional time step $U\Delta t/D = 0.0095$ is used, where D is depth of cavity.

Table 5: The grid for each cases

Simulation cases	Description of the case	Number of cells
Case 1	Front pantograph raised with baseline cavity	30.4 million
Case 2	Rear pantograph raised with baseline cavity	29.4 million
Case 3	Front pantograph raised with the rounded cavity edges	31.5 million
Case 4	Rear pantograph raised with the rounded cavity edges	29.5 million

5.3. Aerodynamic results

5.3.1. Time-averaged velocity field

Figure 12 displays contours of the mean streamwise velocity at the mid-span plane ($z/W = 0.5$) together with two-dimensional in-plane streamlines. For the two cases in which the cavity edges are rounded (cases 3 and 4), the incoming flow follows and attaches initially to the rounded edge surface before separating at $\theta = 30^\circ$, whereas the flow separates immediately at the leading edge for cases 1 and 2. Due to the delayed separation in the rounded edge cases, the separated shear layer reattaches earlier to the cavity floor and results in smaller recirculation regions, and only interacts with pantograph components in the foot part of the cavity. Variation of the flow separation changes the behaviour of the separated shear layer and its interaction with the pantographs and the cavity. The shear layer impinges onto the front part of the cavity ($x/L = 0.3$) and interacts with the front foot of the raised pantograph in case 3 and the joint of the folded pantograph in case 4. However, the shear layer impinges at the middle of the cavity floor and interacts with more parts of the pantographs in both cases 1 and 2. The separated flow impinges on most of the lower parts of the raised pantograph including the foot, the frame and the control strut in case 1. In case 2, most of the folded pantograph panhead is within the shear layer impingement region. These different impingement regions may generate different features of the surface pressure fluctuations of the pantographs.

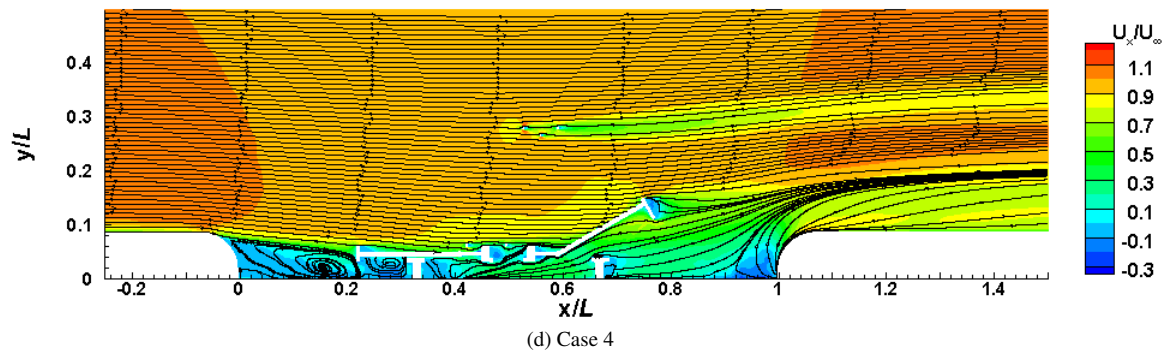
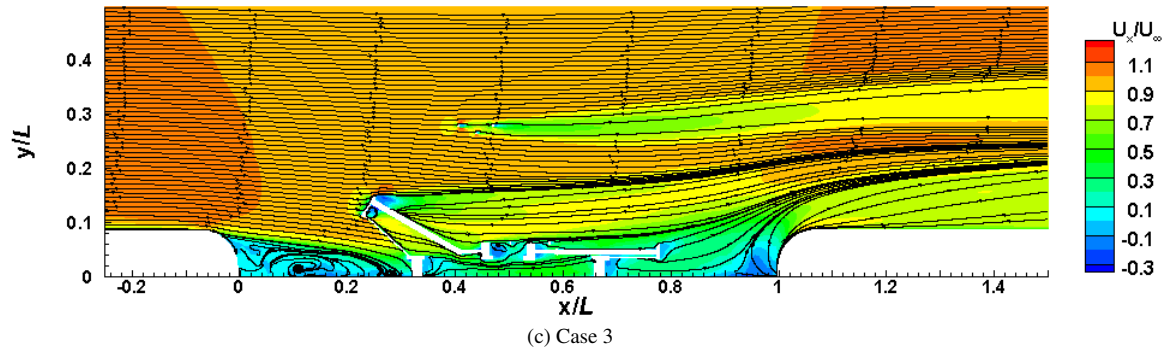
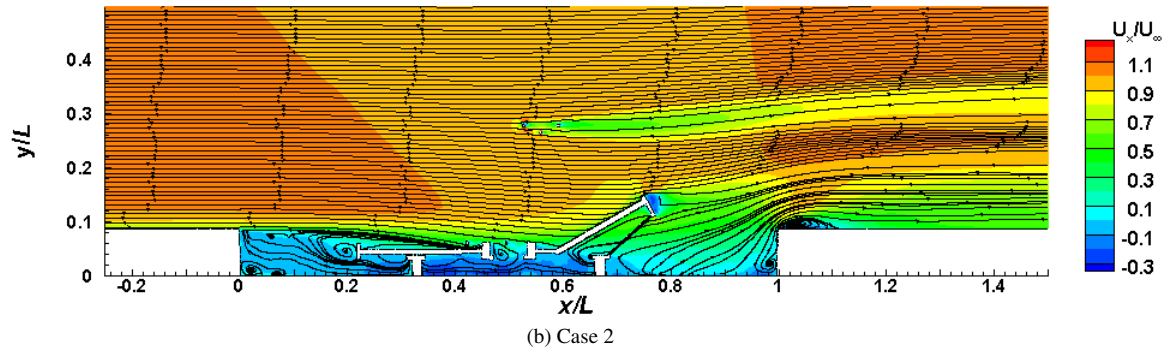
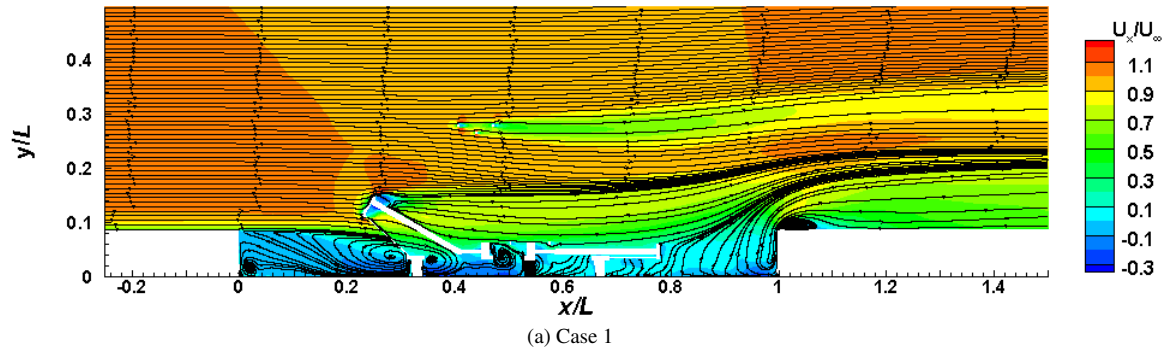


Figure 12: Mean streamline with time-averaged velocity contours.

Figure 13 displays the profiles of the time-averaged streamwise velocity U_x at different streamwise and spanwise locations for cases 2 and 4 with pantographs. The lines at $x/L = 0.52$ are located just before the upstream contact strip of the raised pantograph and the lines at $x/L = 0.54$ are just in front of the horn of the pantograph.

230 The profiles in cases 2 and 4 are similar for all locations above the cavity region ($y/D = 1 - 4$), however for case 4, the flow speed in this region is approximately 3% lower than that for case 2 at $x/L = 0.26$ and $x/L = 0.34$. For case 4 the flow speed outside the cavity region is generally smaller than case 2, whereas with rounded cavity edges the flow speed is higher in the cavity region than for the rectangular cavity. This means that the rounded cavity edge reduces the flow speed around the upper parts of the raised pantograph (the upper arms and the panhead), but increases the
235 flow velocity around the lower parts of the raised pantograph and the folded pantograph.

At the locations just ahead of the panhead ($x/L = 0.52$) and the horn of the raised pantograph ($x/L = 0.54$), the values of U_x between $y/D = 3$ and 3.5 in case 4 are about 4% lower than for case 2. The effect of the rounded cavity edge on the flow upstream of both the raised and folded pantographs will change the levels of the radiated noise from the pantographs, compared with cases 1 and 2. This will be discussed in more detail in the far-field results section.

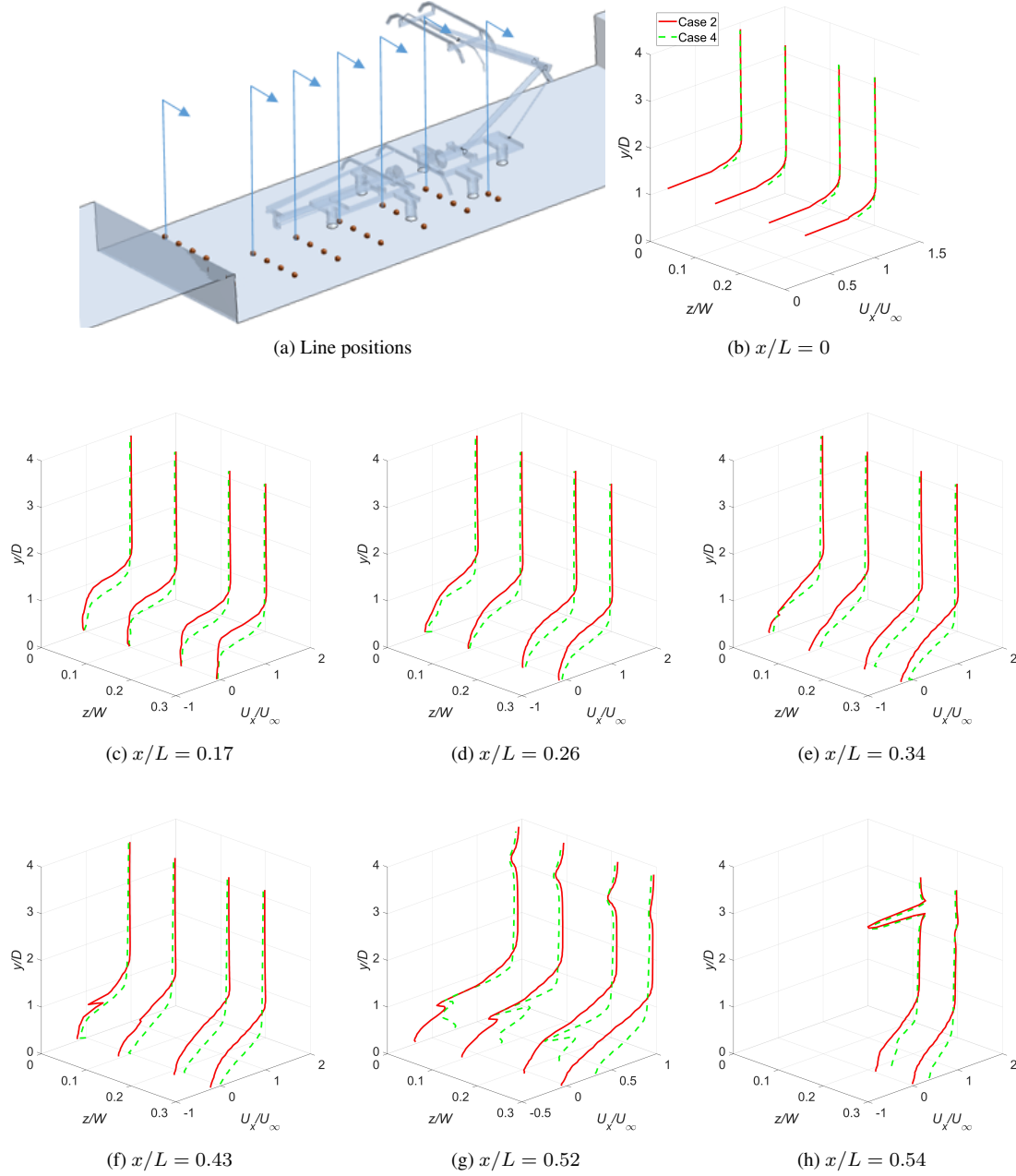


Figure 13: Time-averaged streamwise velocity U_x from case 2 with rectangular cavity and case 4 with rounded cavity.

240 5.4. Aeroacoustic results of the modified cavity with pantographs

5.4.1. Pantograph far-field validation

To validate of the far-field acoustic pressure prediction, simulations were performed for a raised DSA 350 pantograph installed on a flat-wall, the obtained far-field sound pressure spectra are compared with measurements from

a wind tunnel for a full scale DSA350 pantograph [11]. A velocity inlet is applied at the inflow. The simulation is performed for a flow speed of 83.3 m/s (300 km/h). A hexa-dominated mesh generated with several refinement zones is used for all cases. For the purpose of a mesh dependence study for the pantograph, three meshes (coarse, medium and fine) were generated with different mesh densities and mesh sizes. 38 refinement regions were used for the pantograph. All refinement regions had a surface growth rate of 1.1. Different cell sizes are applied for each refinement zone as shown in Figure 14(b) and (c) for the fine mesh. Furthermore, 14 - 30 prism layers were used to resolve the boundary layer near solid surfaces. The non-dimensional wall distance y_1^+ is smaller than 1.0. A non-dimensional time step $U\Delta t/H = 0.00272$ is used, where H (0.245 m) is the height of the pantograph, which the CFL number is less than 1 for simulations.

Radiated noise at a receiver 5 m (at full scale) from the centre of the panhead at a position normal to the flow direction at the side of the pantograph, the same location as measured by Lölgen [9]. The sampling frequency was 125 kHz at 1/10 scale. The spectra are calculated by segmental average using a Hanning window with 50% overlap [32]. Results from the 1/10 scale for the current numerical simulations are converted to full scale using the aeroacoustics similarity law [33] as given by Equation (1).

Figure 15 shows a comparison between experimental and numerical far-field pressure spectra in 1/3 octave bands converted from the narrow band spectra from the simulations. Although numerical results for all cases are slightly over-predicted in the low frequency region, excellent agreement from the medium and fine meshes is seen up to 800 Hz and in particular the first peak at 315 Hz, produced by the contact strips, and the second peak at 630 Hz, generated by the horns, are in good agreement with the experimental data. Numerical results at frequencies above 630 Hz are lower than the measurement. This is because the pantograph geometry in the numerical study has been simplified by removing smaller components such as straps and springs, which generate the high frequency peaks, the numerical results do not match the measurements at high frequencies. From this mesh dependence study, the medium mesh set-up is selected as the basis for generating meshes for the pantographs.

5.4.2. Sound pressure level

Radiated sound pressure is calculated for the whole system, and also by consider different sources as different components only at two far-field receivers, one directly to the side and one directly above the cavity at a distance of 2.5 m (corresponding to 25 m at full scale) from the centre of the cavity floor. The same method as in Section 4 is

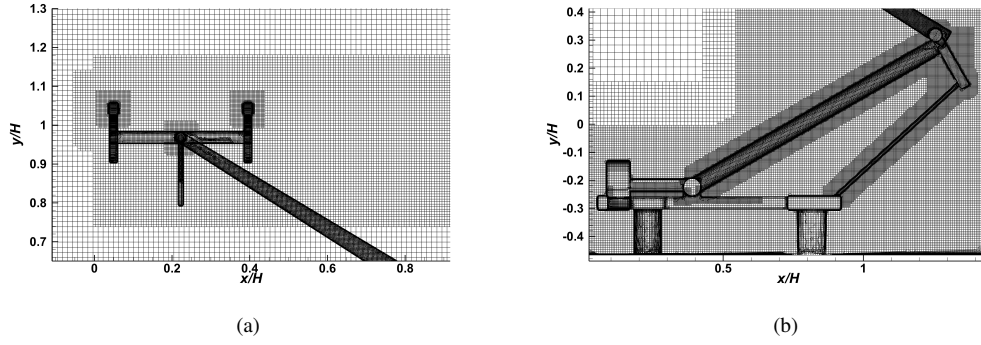


Figure 14: (a) mesh around the raised pantograph frame (b) mesh around the panhead.

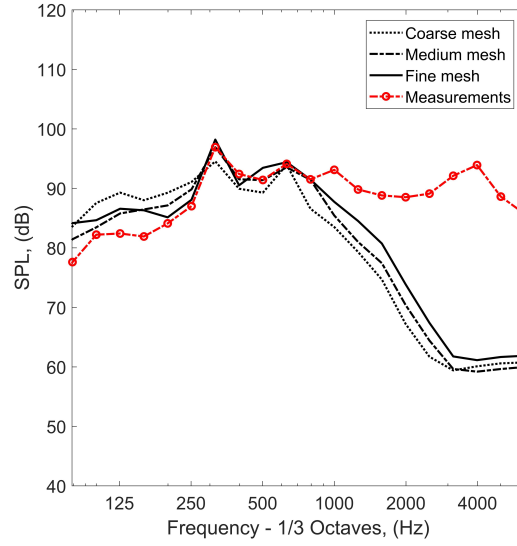


Figure 15: SPL comparison of experimental [11] and numerical results.

used for sampling the sound pressure and calculating the spectra. The results given in this section do not consider reflections from the train roof and only direct sound pressure are accounted. The results are converted to full scale from the 1/10 scale model for the current simulation, using Equations (1) and (2).

The spectra of the radiated sound pressure at the side receiver from the whole system, the raised pantograph, the folded
 275 pantograph and only the cavity walls, including the aft cavity wall, are shown in Figure 16. In the low frequency region below 160 Hz, there is a large difference between the rectangular cavity (cases 1 and 2) and the rounded cavity edges (cases 3 and 4) in the whole system noise. This is because the rounded cavity edge configuration reduces the noise radiated from the cavity at low frequency as shown in Figure 16 (d). Figure 16(b) shows the noise radiated from the

raised pantograph where two peaks at 250 Hz and 500 Hz are seen for all cases. At the first peak generated by the contact strip the highest level happens in case 1 (80 dB) and the lowest level in case 4 (78 dB). The difference of the level between cases 1 and 4 at the second peak (500 Hz) is approximately 2.5 dB. The contribution from the raised pantograph dominates the overall sound spectrum.

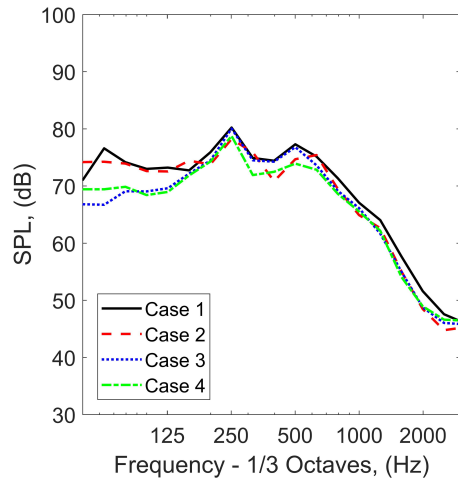
The contributions from the folded pantograph (Figure 16(c)) are generally lower with no strong tonal components. As discussed in Section 3.3, for the rounded edges, the flow velocity within the cavity region is higher than for cases 1 and 2 and consequently the levels of the radiated noise from the folded pantograph are approximately 7 dB higher for cases 1 and 2. Figure 16(d) shows the noise radiated from the cavity walls. In the frequency region below 500 Hz, the differences between the rounded cavity cases and the baseline cases are significant (around 12 dB).

Figure 17 shows the corresponding spectra of radiated sound pressure at the top receiver position. In general, the SPL at this location is much higher than that at the side location, especially for the sound radiated by the cavity.

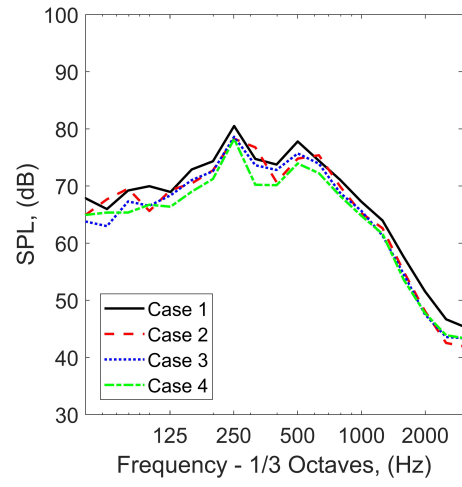
Furthermore, the differences between the noise radiated when the cavity edges are rounded (cases 3 and 4) and without it are much less, compared with the levels at the side position. The OASPLs for total and each components, calculated by integrating the spectra over frequency up to 2500 Hz, are given in Table 6. It can be seen that at side position, the total OASPLs from cases 3 and 4 are 0.5 dB lower than that from cases 1 and 2. At the top position, a total reduction of 1.7 dB is achieved with the rounded edge treatments. It is noted that the noise reduction in practice could be smaller than the results from the simulations in this study since the results above 630 Hz are underpredicted due to the simplification of the geometry of the pantographs.

Table 6: OASPL in dB at the side and the top.

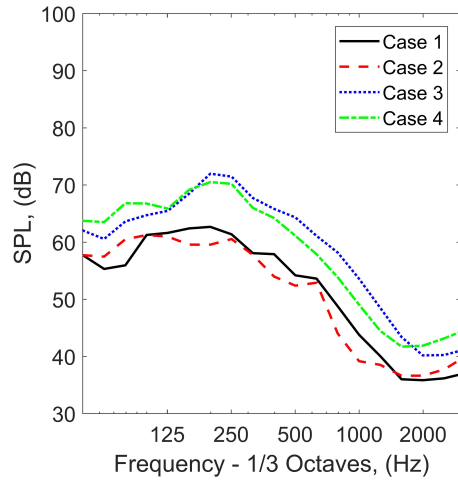
At the side (azimuthal angle $\theta = 90^\circ$)				
Simulation cases	Total system	Raised pantograph	Folded pantograph	Cavity
Case 1	86.3	85.9	71.0	74.5
Case 2	85.1	84.7	70.3	72.9
Case 3	85.9	85.0	78.1	62.5
Case 4	84.6	83.6	77.8	63.2
At the top (polar angle $\phi = 90^\circ$)				
Case 1	95.8	91.1	76.6	93.7
Case 2	96.3	93.8	76.5	95.2
Case 3	95.6	91.0	85.5	92.6
Case 4	94.0	89.1	83.7	91.2



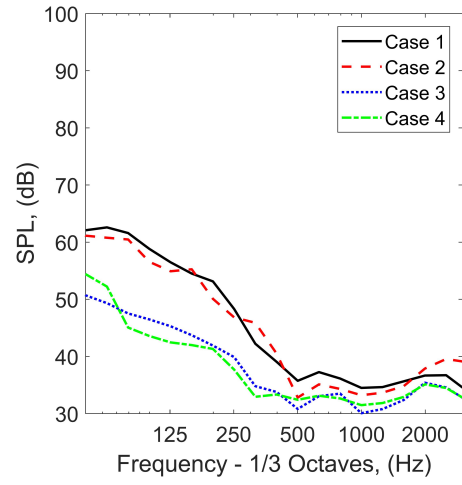
(a) Whole system



(b) Raised pantograph



(c) Folded pantograph



(d) Only cavity

Figure 16: Sound pressure levels at side receiver position.

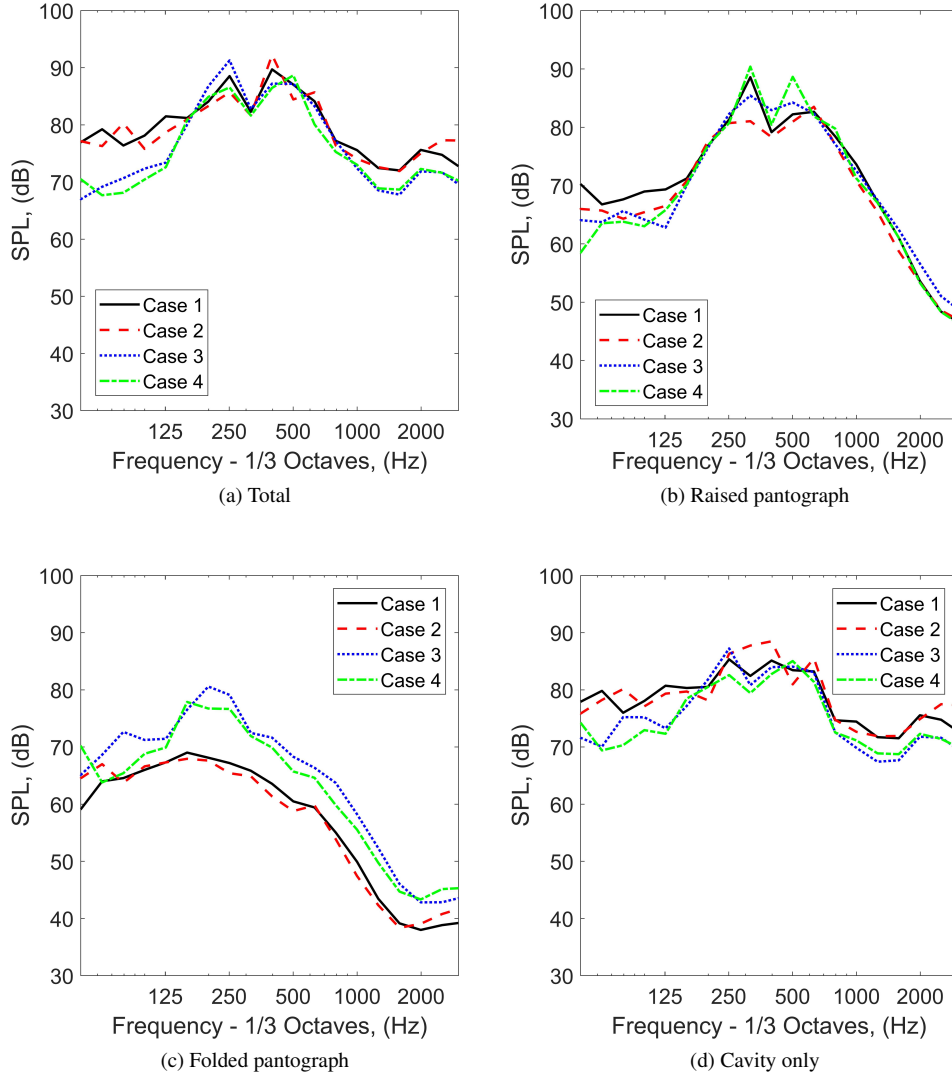


Figure 17: Sound pressure levels at top receiver position.

To obtain sound power level (SWL), a total of 244 far-field receivers are used in the model, located on a sphere with radius 2.5 m (corresponding to a radius of 25 m at full scale) from the middle of the cavity door. Receivers are also placed symmetrically below the cavity wall to consider reflections from the train roof. The direct and reflected sound pressure are summed in the time domain to account for their phase; the latter is taken from the direct radiated sound to the mirrored receiver. The sound power can be obtained from,

$$W = \int_S \frac{p_{\text{rms}}^2}{\rho c} dS \quad (3)$$

where p_{rms} is the rms acoustic pressure, ρ is the density, c is sound speed and S is the surface area of the hemisphere.

The sound power levels for the four cases are listed in Table 7. The sound powers from the rounded cavity edges configuration (cases 3 and 4) are around 2 dB lower than the cases without the treatment. This is due to mainly

300 reduction of the noise radiated from the cavity wall by rounding the cavity edges.

Table 7: Sound power levels from cases 1 and 2 with a rectangular cavity , and cases 3 and 4 with the rounded cavity.

Simulation cases	Sound power level (re 10^{-12}W)	
	Total system (dB)	Total system (dB(A))
Case 1	110.8	105.5
Case 2	111.0	105.2
Case 3	108.6	103.3
Case 4	108.5	103.2

6. Conclusions

Numerical simulations have been performed to investigate effects on the flow features and far-field acoustics of different cavity edge configurations by rounding and sloping the cavity edges. Both the cavity edge treatments show a reduction in the mean drag and the (negative) lift coefficients. When the cavity edges are rounded, the RMS values of the drag and the lift coefficients are also significantly reduced. Both treatments of the cavity show a significant reduction of the unsteady flow in the cavity trailing edge region. By rounding the cavity edges, the recirculation in the upstream region is reduced and the small recirculation region generated by the cavity trailing edge is eliminated. Consequently, the rounded cavity edge configuration with $h/D = 0.8$ gives a 15.2 dB reduction in noise at the side receiver position and a 12 dB reduction at the top receiver position, compared with the baseline case.

310 Furthermore, the flow and noise characteristics of two DSA 350 pantographs located in a cavity with the rounded cavity edge have been investigated and compared with those for the same pantographs installed in a rectangular cavity. It is found that when the cavity edges are rounded, a slightly lower velocity occurs upstream of the upper parts of the raised pantograph than in the baseline case. However, the rounded cavity edge configuration causes higher velocities inside the cavity region. Consequently, the noise radiated from the raised pantograph with the rounded edge cavity is approximately 1 dB lower than for the baseline at the side receiver, whereas the noised radiated from the folded pantograph increases by 7.5 dB compared with the baseline case. However, its contribution to the total noise is still negligible. Furthermore, the noise radiated from only the cavity itself is significantly reduced. For the noise generated

by the whole system, two (one raised and one folded) pantographs and the cavity, when the cavity edges are rounded with radius $h/D = 0.8$, a total reduction of 0.5 dB at the side and, 1.7 dB at the top are achieved.

Acknowledgments

This research project has been supported by the Iridis 4 and Lyceum High Performance Computing Facility at the University of Southampton.

References

- [1] C. Mellet, F. Létourneaux, F. Poisson, C. Talotte "High speed train noise emission: Latest investigation of the aerodynamic/rolling noise contribution", *Journal of Sound and Vibration*, vol. 293(3-5), pp. 535-546, 2006.
- [2] D.J. Thompson, "Railway noise and vibration: mechanisms, modelling and means of control", Oxford: Elsevier, 2008.
- [3] C. Talotte, "Aerodynamic noise: a critical survey", *Journal of Sound and Vibration*, vol. 231, pp. 549-562, 2000.
- [4] C. Talotte, P.E. Gautier, D.J. Thompson, and C. Hanson, "Identification, modelling and reduction potential of railway noise sources: a critical survey", *Journal of Sound and Vibration*, vol. 267, pp. 447-468, 2003.
- [5] M. Ikeda, T. Mitsumoji, T. Sueki, and T. Takaishi, "Aerodynamic noise reduction in pantographs by shape-smoothing of the panhead and its support and by use of porous material in surface coverings", Quarterly Report of RTRI, vol. 51, pp. 220-226, 2010.
- [6] M. Ikeda and T. Mitsumoji, "Numerical estimation of aerodynamic interference between panhead and articulated frame", Quarterly Report of RTRI, vol. 50, pp. 227-232, 2009.
- [7] M. Ikeda and T. Mitsumoji, "Evaluation method of low-frequency aeroacoustic noise source structure generated by Shinkansen pantograph", Quarterly Report of RTRI, vol. 49, pp. 184-190, 2008.
- [8] F.R. Grosche and G. Meier, "Research at DLR Göttingen on bluff body aerodynamics, drag reduction by wake ventilation and active flow control", *Journal of Wind Engineering and Industrial Aerodynamics*, vol. 89, pp. 1201-1218, 2001.

- [9] T. Lölgen, "Wind tunnel noise measurements on full-scale pantograph models", *The Journal of the Acoustical Society of America*, 105(2) 1136. doi: 10.1121/1.425410, 1999.
- [10] A. Lauterbach, K. Ehrenfried, S. Loose, C. Wagner, "Microphone array wind tunnel measurements of Reynolds number effects in high-speed train aeroacoustics", *International Journal of Aeroacoustics*, 11(3-4), PP. 411-446, 2012.
- [11] E.Latorre. Iglesias, D.J. Thompson, M.G Smith, "Component-based model to predict aerodynamic noise from high-speed train pantographs", *Journal of Sound and Vibration*, 394, pp.280-305, 2017.
- [12] Y. Zhang, J. Zhang, T. Li, and L. Zhang, "Investigation of the aeroacoustic behavior and aerodynamic noise of a high-speed train pantograph", *Science China Technological Sciences*, 60(4), pp.561-575, 2017.
- [13] H. Noh, S. Choi, S. Hong, and S. Kim, "Investigation of noise sources in high-speed trains, "Proceedings of the Institution of Mechanical Engineers, Part F: *Journal of Rail and Rapid Transit*, 228(3), pp.307-322, 2013.
- [14] C. Noger, J.C. Patrat, J. Peube, and J.L. Peube, "Aeroacoustical study of the TGV pantograph recess", *Journal of sound and vibration*, 231(3), pp.563-575, 2000.
- [15] J. Niu, Y. Wang, L. Zhang, Y. Yuan, "Numerical analysis of aerodynamic characteristics of high-speed train with different train nose lengths", *International Journal of Heat and Mass Transfer*, 1127, pp.188-199, 2018.
- [16] M. Carnevale, A. Facchinetti, L. Maggiori, D. Rocchi "Computational fluid dynamics as a means of assessing the influence of aerodynamic forces on the mean contact force acting on a pantograph", *Proceedings of the Institution of Mechanical Engineers, Part F: Journal of Rail and Rapid Transit*, 230(7), pp.1698-1713, 2016
- [17] E. B. Plentovich, R.L. Stallings, and M.B. Tracy, "Experimental cavity pressure measurements at subsonic and transonic speeds. Static-pressure results", NASA Langley Res. Cent., Hampton, VA, Tech. paper TP-3358, 1993.
- [18] Y. Ng, "Characterising low-speed, transitional cavity flow." *The Aeronautical Journal*, vol. 116, pp. 1185-1199, 2012.
- [19] Y. Wang, H. Lee, K. Li, Z. Gu and J. Chen, "Experimental and numerical study of flow over a cavity for reduction of buffeting noise", *Acta Acustica united with Acustica*, vol. 98(4), pp. 600-610, 2012.

- 365 [20] X. Zhang, X.X. Chen, A. Rona, and J.A. Edwards, "Attenuation of cavity flow oscillation through leading edge flow control", *Journal of Sound and Vibration*, 221(1), pp.23-47, 1999.
- [21] B. Henderson, "Third computational aeroacoustics (CAA) workshop on benchmark problems: Category 6 Automobile Noise Involving Feedback-Sound Generation by Low Speed Cavity Flows", Glenn Res. Cent. Cleveland, OH, NASA/CP-2000-209790, 2000.
- 370 [22] J.D Anderson Jr, "*Fundamentals of aerodynamics*", New York: McGraw-Hill Education, 2010.
- [23] P. R. Spalart, "Comments on the feasibility of LES for wings, and on a hybrid RANS/LES approach", *Proceedings of first AFOSR international conference on DNS/LES*, Greyden Press, 1997.
- [24] ANSYS, "ANSYS Fluent Tutorial Guide", ANSYS, Inc. Canonsburg, PA, 2014.
- [25] P. R. Spalart, S. Deck, M. L. Shur, K. D. Squires, M. K. Strelets and A. Travin, "A new version of detached-eddy simulation, resistant to ambiguous grid densities", *Theoretical and computational fluid dynamics*, vol. 20(3), pp.181-195. 2006
- 375
- [26] P. R. Spalart, "Strategies for turbulence modelling and simulations", *International Journal of Heat and Fluid Flow*, vol. 21, pp. 252-263, 2000.
- [27] M. L. Shur, P. R. Spalart, M.K. Strelets, A.K. Travin, "A hybrid RANS-LES approach with delayed-DES and wall-modelled LES capabilities", *International Journal of Heat and Fluid Flow*, vol. 29(6), pp. 1638-1649, 2008.
- 380
- [28] J. F. Williams and D. L. Hawkings, "Sound generation by turbulence and surfaces in arbitrary motion", *Philosophical Transactions of the Royal Society of London A: Mathematical, Physical and Engineering Sciences*, vol. 264, pp. 321-342, 1969.
- [29] K. S. Brentner and F. Farassat, "An analytical comparison of the acoustic analogy and Kirchhoff formulation for moving surfaces", *The American Helicopter Society 53rd Annual Forum*, Virginia Beach, VA, May 1, 1997.
- 385
- [30] K. S. Brentner and F. Farassat, "Modeling aerodynamically generated sound of helicopter rotors", *Progress in Aerospace Sciences*, vol. 39, pp. 83-120, 2003.

[31] V. Kolář, "Vortex identification: New requirements and limitations", In *International journal of heat and fluid flow*, pp.638-652, 2007.

390 [32] Z. Hu, C.L. Morfey, and N.D. Sandham, "Wall pressure and shear stress spectra from direct simulations of channel flow", *AIAA journal*, vol 44(7), pp.1541-1549, 2006.

[33] A. Iida, T. Otaguro, H. Nagarekawa, A. Torii, and I. Naruse, "Similarity law of aerodynamic noise generation", in *6th AIAA Aeroacoustics Conference and Exhibit Conf.*, Lahaina., pp.2000-2012, 2000.

[34] V. Thangamni, K. Knowles, and A. J. Saddington, "Effects of Scaling on High Subsonic Cavity Flow Oscillations
395 and control", *Journal of Aircraft.*, vol 51(2), pp.424-433, 2014.