

Age and frailty are independently associated with increased COVID-19 mortality and increased care needs in survivors: results of an international multi-centre study

Geriatric Medicine Research Collaborative* on behalf of Covid Collaborative**

Corresponding author:

Dr Carly Welch

Institute of Inflammation and Ageing

College of Medical and Dental Sciences

University of Birmingham

B152TT

c.welch@bham.ac.uk

© The Author(s) 2021. Published by Oxford University Press on behalf of the British Geriatrics Society. All rights reserved. For permissions, please email: journals.permissions@oup.com.

UNCORRECTED MANUSCRIPT

Declaration of conflicts of interest: None

Declaration of Sources of Funding: The Geriatric Medicine Research Collaborative has previously received funding from the British Geriatrics Society for administrative and running costs. No project specific funding was obtained for this research. MW and SR acknowledge support from the NIHR

Newcastle Biomedical Research Centre. The views expressed in this manuscript are those of the authors and not those of the NIHR, the NHS, or the Department of Health.

*Members of the Geriatric Medicine Research Collaborative:

Mustafa Alsahab	Katy Madden	Michala Pettitt
Lucy Beishon	Laura Magill	Jennifer Pigott
Bryony Brown	Jane Masoli	Thomas Pinkney
Elinor Burn	Tahir Masud	Terence Quinn
Jenni K Burton	Lauren	Abigail Reynolds
Natalie Cox	McCluskey	Sarah
Melanie Dani	Natalie McNeela	Richardson
Muhammed	Awolkhier	Nik Sanyal
Elhadi	Mohammedseid-	Adam Seed
Sarah	Nurhussien	Isobel Sleeman
Freshwater	Hannah Moorey	Chee Soo
Victoria Gaunt	Mary Ni	Claire Steves
Adam Gordon	Lochlainn	W David Strain
Marie Goujon	Krishnarajah	Joanne Taylor
Matthew Hale	Nirantharakumar	Kelli Torsney
Terry Hughes	Kelvin Okoth	Carly Welch
Thomas A	Christopher N	Daisy Wilson
Jackson	Osuafor	Miles Witham
Benjamin Jelley	Katherine	
Asma Khan	Patterson	
Heena Khuroya	Grace ME	
Rajni Lal	Pearson	
	Rita Perry	

**Members of the Covid Collaborative:

Hossam Aldein S Abd	Ali Ali	Avinash Aujayeb
Elazeem	Abdulmalek Aljafari	Elsayed M Awad
Mohammed H Abdelhafez	Abdulmoiz Aljafari	Mohammed A Azab
Amir Abdelmalak	Mohammed Al-Sadawi	Mohammad T Azam
Omar A Abdelwahab	Lobna Al-Sodani	Sally Aziz
Osama MAS Abdulhadi	Fatih Altintoprak	Ahmed Y Azzam
Olubayode Adewole	Gitanjali Amaratungaz	Laxmi Babar
Mohammed Ahmad	Jocelyn Amer	Laura Babb
Eltayeb A Ahmed	Sylvia Amini	Manpreet Badh
Hazem Ahmed	Taha Amir	Clare Baguneid
Islam A Ahmed	Cheran Anandarajah	Emily Bailey
Mertcan Akcay	Rachael Anders	Efstratia Baili
Yeşim Akdeniz	Muhammed H Ansari	Sarah Baldwin
Emrah Akın	Kingsley Appiah	Ioannis Baloyiannis
Carolyn Akladios	Jolene Atia	Moulinath Bannerjee
Francesco Alessandri	Catherine Atkin	Anna Barnard

Fabio Barra
Hannah Bashir
Monica Bawor
Zülfü Bayhan
Lucy Beishon
James Belcher
Ravindra Belgamwar
Corrina Bentley
Amy Birchenough
Yen Nee J Bo
Hayley R Boden
Ahmad Bouhuwaish
Gioia Brachini
Laura Bremner
Hannah Bridgwater
Catherine Bryant
Gabrielle Budd
Sharon Budd
Adam Budzikoski
Reem Bulla
Antonio Buondonno
Antonio Buondonno
Nicole Burden
Elinor Burn
Hejab Butt
Recayi Capoglu
Andra Caracostea
Rifa Cardoso
Alexis Carr
Milagros Carrasco-Prats
Caterina Cattell
Giancarlo Ceccarelli
Giuseppe Cecere
Alexandros
Charalabopoulos
Evelyn Charsley
Hannah Cheney-Lowe
Theodore Chevallier
Asad J Choudhry
Flavia Ciccarone
Pierfranco M Cicerchia
Bruno Cirillo
Fatma D Collins
Victoria Comerford
Ahmed Cordie
Siobhan Coulter
Nick Coulthard
Catrin Cox
Victoria Cox
Andrew Crowe
Jack Cullen
Jean Cummings
Niamh Cunningham
Daniel Curley
Hannah Currie
Madeleine Daly
Jay Darley
Nikhita Dattani
Spyridon Davakis
Rowan Davies
Gilda De Paola
Giorgio De Toma
Sergio Del Valle-Ruiz
Benyamin Deldar
Hakan Demir
Arjun Desai
Nirali Desai
Alice Devaney
Lindsey Dew
Jugdeep Dhesi
Maria Dias
Gordon Dick
Parveen Doddamani
Gurinder Dogra
Tina Doll
Hannah C Dooley
Samiullah Dost
Catherine Dotchin
Hannah Dowell
Ioan M Draghita
James M Dundas
Giulia Duranti
Hiren Dusara
Rajesh Dwivedi
Adam H Dyer
Alison Eastaugh
Elinor Edwards
Shrouk M Elghazaly
Ahmed O Elmehrath
Hope Elrick
Mostafa El-Shazly
Alexander Emery
Eric W Etchill
Sarah Evans
Felicity Evison
Cassandra Fairhead
Margherita Faulkner
Agnieszka Felska
Antia Fernandez
Pedro V Fernández-Fernández
Antonella Ferraiolo
Simone Ferrero
Enrico Fiori
Necattin Firat
Gracie Fisk
Anna Fleck
Giovanni B Fonsi
Alodia Gabre-Kidan
Gaetano Gallo
Ratnam Gandhi
Madeleine Garner
Nikolaos Georgiou
Hannah Gerretsen
Nourhan AA Ghannam
Andrew Ghobrial
Hedra Ghobrial
Zaynub Ghufloor
Jake Gibbon
Georgia F Gilbert
Marie Giles
Clara Giménez-Francés
Emre Gonullu
Amy Gray
Joshua H Gray
Deirdre Green
Charlotte Greene
Ellanna Griffin
Karla Griffith
Anthony Grubb
Yue Guan
Daniel N Guerero
Ayushi Gupta
Claudio Gustavino
Laurenny Guzman
Ahmed KM Hadreiez
Jiannis Hajjiioannou
Deevia Hanji

Deepthy Hari Madhavan	Hesham Khalid	John Millwood-Hargrave
Tarık Harmantepe	Haris Khan	Andrea Mingoli
Patrick Harrison	Muhammad S Khan	Kelvin Miu
Barbara Hart	Matthew King	Fawsiya Mohamed
Aidan Haslam	Thomas Kneen	Soha M Mohamed
Victoria Haunton	Li Kok	Aliae AR Mohamed Hussein
Elliott R Haut	Chiara Kratochwila	Abdulkader Mohammad
Torben Heinsohn	Aneliya Kuzeva	Aaliya Mohammed
Lindsay Hennah	Pierfrancesco Lapolla	Ahmed A Momen
Helal F Hetta	Rebecca Lau	Farhana Moomo
Alexander Hickman	Kar Yee Law	Ismael Mora-Guzmán
Abigail Hobill	Aimee Leadbetter	Lizzie Moriarty
Patrick CP Hogan	Gabriel Lee	Hamilton Morrin
Vesna Hogan	Helena Lee	Claire Morris
Elizabeth Holmes	Helena Lee	Nicholas Moss
Katie Honney	Gavriella Levinson	Mohamed M Moustafa
Katharine Hood	Grace Lewis	Maria Mpoura
Katherine Hopkinson	Theodore Liakakos	Mohammed Mubin
Lara Howells	Stephen Lim	Ali Muhtaroglu
Nicole Hrouda	Danielle Lis	Georgina Muir
Danielle Hunsley	Emma Livesey	Stephanie Mulhern
William Hurst	Pedro López-Morales	Daniel Muller
Rand A Hussein	Lily Lowes	Declan C Murphy
Mohamed Eltaher AA	Eleanor Lunt	Bushra Muzammil
Ibrahim	Emily Lyon	Varun Nadkarni
Ishmam Ibtida	Suvira Madan	Mariam Albatoul Nageh
Aina Ibukunoluwakitan	Zēinab Majid	Yasmin K NasrEldin
Irem Ishlek	Harsha Malapati	Wasim Nawaz
Rishi Iyer	Jade Man	Hanna Nguyen
Karl Jackson	Baguiasri Mandane	Cliona Ni Cheallaigh
Rosie Jackson	Sarah H Manning	Alexander Noar
Ellen James	Baris Mantoglu	Samuel North
Hayley Jarvis	Nuria Martínez-Sanz	Favour Nwolu
Sophie Jeffs	William Marx	Alice O'Docherty
Nathan Jenko	Almontacer EB Masood	Omoteniola Odutola
Sasha Jeyakumar	Tom Maughan	Sinead O'Dwyer
Shahriar Kabir	Jamie Mawhinney	Olebu Ogochukwu
Harjinder Kainth	Dominic Maxfield	Catherine O'Mahony
Jason Kalloo	Jordan Mayer	Lia Orlando
Akhil Kanzaria	Henry Maynard	Marc Osterdahl
Amalia Karapanou	Claire McDonald	Christina Page
Nuha Kardaman	Aine McGovern	Ismini Panayotidis
Sandeep Karthikeyan	Sophie McLachlan	Shivam Pancholi
Anne Karunatileke	Esther Medina-Manuel	Jessica Parkin
Mairead Kelly	Simona Meneghini	Lauren C Passby
Nicola I Kelly	Michelle Metcalf	Patricia Pastor-Pérez

Harnish Patel	Luca Scott	María Valero-Soriano
Shefali Patel	Michael Sen	Rosanna Varden
Rose Penfold	Mosab AA Shaban	Vittoria Vergani
Rupini Perinpanathan	Kathleen T Shakespeare	Dominique Vervoort
Konstantinos Perivoliotis	Ellie Shaw	Giuseppina Vescio
Teresa Perra	Hannah Shaw	Mark Vettasseri
Martha Pinkney	Jonathan Sheldrake	Madiha Virk
Enrico Pinotti	Sing Yang Sim	Vaishali Vyas
Alberto Porcu	Luigi Simonelli	Joanne Wagland
Angeline Price	Nikolaos V Sipsas	Stephanie Wallis
Francesco Pugliese	Jarita Sivam	Chloe Warner
Prabhleen Puri	Sri Sivarajan	Eleanor Watkins
Sylvia Pytraczyk	Jennifer Smith	Hannah Watson
Yusra Qaiser	Fabio Speranza	Rachael Webb
Maria Qurashi	Claire Spice	Sarah H Welsh
Dina Radenkovic	Amanda Stafford	Ruth West
Thurkka Rajeswaran	Katharine Stambollouian	Elisha Whelan
Sarah F Rapaport	Kent A Stevens	Julie Whitney
Tahmina Razzak	Jack Stewart	Mark Whitsey
Lara Reilly	Emma Stratton	Catherine Wilcock
Paul Reynolds	Hannah Street	Iain Wilkinson
Alexandra Richardson	Michael Surtees	David Williams
Amelia Roberts	Emma Swinnerton	Megan Williamson
Amelia Roberts	Ahmed SA Taher	Ruth H Willott
Charlotte Roberts-Rhodes	Caroline Tait	Mettha Wimalasundera
Tanya Robinson	Amybel Taylor	Yu Lelt Win
Aldo Rocca	Miriam Thake	Laura Winter
Emily Ross-Skinner	Katie Thin	Stephanie Worrall
Miguel Ruiz-Marín	Hannah Thould	Rebecca Wright
Rebecca Ryall	Thyn Thyn	Natalie Yeo
Alshaimaa M Saad	Benjamen To	Eirene Yeung
Mahmoud M Saad	Hannah Tobiss	Merve Yigit
Ambreen Sadiq	Kathryn Topley	Yasin A Yildiz
Giuseppe Sammarco	Liam Townsend	Humza Yusuf
Michail A Sampanis	Ellen Tullo	Martina Zambon
Hazel Sanghvi	George Tzouvaras	Hein Zaw
Paolo Sapienza	Anthony Umeadi	Omar Zein Elabedeen
Ross Sayers	Hrisheekesh Vaidya	

Acknowledgements: See the supplementary data for the full listings of the collaborative authors with their roles and affiliations.

Keywords: frailty, covid-19, mortality, transitions of care, delirium.

Key points:

- Age and frailty were independently associated with increased risk of mortality in hospitalised patients with COVID-19
- Delirium was not predictive of mortality but was predictive of critical care admission with COVID-19
- Age, frailty, and delirium were associated with increased odds of transitions of care needs at discharge in survivors

Abstract

Introduction:

Increased mortality has been demonstrated in older adults with COVID-19, but the effect of frailty has been unclear.

Methods:

This multi-centre cohort study involved patients aged 18 years and older hospitalised with COVID-19, using routinely collected data. We used Cox regression analysis to assess the impact of age, frailty, and delirium on the risk of inpatient mortality, adjusting for sex, illness severity, inflammation, and co-morbidities. We used ordinal logistic regression analysis to assess the impact of age, Clinical Frailty Scale (CFS), and delirium on risk of increased care requirements on discharge, adjusting for the same variables.

Results:

Data from 5711 patients from 55 hospitals in 12 countries were included (median age 74, IQR 54 – 83; 55.2% male). The risk of death increased independently with increasing age (>80 vs 18-49: HR 3.57, CI 2.54 – 5.02), frailty (CFS 8 vs 1-3: HR 3.03, CI 2.29 – 4.00) inflammation, renal disease,

cardiovascular disease, and cancer, but not delirium. Age, frailty (CFS 7 vs 1-3: OR 7.00, CI 5.27 – 9.32), delirium, dementia, and mental health diagnoses were all associated with increased risk of higher care needs on discharge. The likelihood of adverse outcomes increased across all grades of CFS from 4 to 9.

Conclusions:

Age and frailty are independently associated with adverse outcomes in COVID-19. Risk of increased care needs was also increased in survivors of COVID-19 with frailty or older age.

Background

Coronavirus disease 2019 (COVID-19) is a multi-system disease caused by the Severe Acute Respiratory Syndrome Coronavirus 2 (SARS-CoV-2). Early data suggested older and/or co-morbid adults were at increased risk of adverse outcomes (1-4). The Clinical Frailty Scale (CFS) (5, 6) featured in critical care escalation guidelines in United Kingdom (UK) and Canada (7). Early evidence of impact of frailty produced mixed findings; studies suggested frailty was (8), and was not (9, 10) associated with increased mortality with COVID-19. Our collaborative previously demonstrated in other conditions that delirium is common and associated with adverse outcomes, especially in frail older adults (11). Two distinct cohorts identified that delirium is more common in frail older adults with COVID-19 (12). Thus, a need for research on delirium and frailty with COVID-19 was recognised (13). Additionally, prolonged recovery has been reported in survivors (14), although the impact of COVID-19 upon transitions of care needs with age and frailty has not been previously studied.

Objective

To evaluate the association of age, frailty, and delirium with adverse outcomes including mortality and secondary outcomes to include critical care admission, incident delirium, and transitions of care needs in survivors in hospitalised patients with COVID-19.

Methods

Study design and setting

We included unscheduled hospital admissions of adults aged ≥ 18 years-old with COVID-19 infection in this observational study. Emergency department discharges and nosocomial COVID-19 were excluded. Prospective data upload upon clinical suspicion was encouraged; clinicians identified patients during medical clerking, or ward transfer. Retrospective identification was dependent on local COVID-19 coding processes, involving medical records, informatics, or microbiology.

Investigation was led through the Geriatric Medicine Research Collaborative (GeMRC) (15, 16). The protocol was openly available on GeMRC, British Geriatrics Society, and University of Birmingham REDCap webpages, and disseminated via emails and social media. Sites were required to obtain local, regional, and national approvals, and declare these were in place when registering. Data sharing agreements were arranged where required. Sites were provided REDCap data upload logins; secure encrypted web-based data management software. Sites uploaded anonymised patient-level data onto REDCap. Independent data managers ensured quality control.

Case definition and laboratory confirmation

Suspected COVID-19 infection was diagnosed clinically considering symptoms, radiology, and laboratory tests. Laboratory confirmation was conducted according to local policies and World Health Organization guidance; identification of SARS-CoV-2 from reverse transcriptase polymerase chain reaction (RT-PCR) from oropharyngeal or high nasal swabs (RdRp gene assay), or antibodies against SARS-CoV-2 in serum samples ≥ 14 days after symptom onset. Patients were included if there was strong clinical suspicion but no laboratory confirmation.

Variables and data sources

Data were extracted from routinely collected clinical information; variables are outlined in the online supplement (Table-S1). Screening with the 4 'A's Test (4AT) (17) on admission was recommended; ≥ 4 was suggestive of prevalent delirium. Incident delirium was defined as documented emergent delirium during admission. Frailty was derived based on function two weeks before admission using the 9-point CFS (6), by prospective clinical assessment or retrospectively from medical records.

Study outcomes

Primary end point was death during index admission. Secondary end points were critical care admission, incident delirium, and increased care requirements at discharge (as defined below).

Statistical methods

Data analysis was performed using STATA SE version 16 (StataCorp LLC, Texas, USA) by an independent statistician (KO). Descriptive variables were expressed as median and Interquartile Range (IQR), and counts; chi-squared and Mann-Whitney U tests were applied for statistical significance of mortality differences.

Primary outcome

We used Cox proportional survival analysis to assess impact of delirium and frailty upon inpatient mortality. Univariable and multivariable analyses were conducted:

- Model 1: Variables previously associated with COVID-19 adverse outcomes; age (3, 18), sex (3, 18), C-Reactive protein (CRP) (3), Ferritin (19, 20), Body Mass Index (BMI) (21), Alanine aminotransferase (3), lymphocyte: neutrophil ratio, Glomerular Filtration Rate (Modification of Diet in Renal Disease, MDRD, formula (22)) (3), co-morbidities coded individually (3, 18), and illness severity (3) by admission National Early Warning Score (NEWS) (23).
- Model 2: Variables above with CFS; CFS 1-3 was the comparison group, and CFS 9 and missing CFS were separate discrete groups (6). Additional analyses were conducted with age and frailty (excluding CFS 9) as continuous variables.
- Model 3: Variables in Models 1 and 2 and delirium (prevalent/incident).

We performed Wald and Likelihood Ratio tests for model fit for age and frailty individually and together as predictors in all models. In addition, we assessed for multiplicative interactions between

age and frailty upon the primary outcome of mortality censored at the point of discharge. Frailty was grouped with the exclusion of CFS 9 in these models (CFS 1-3, CFS 4-6, CFS 7-8, CFS missing).

Sensitivity analysis

We performed sensitivity analyses on models for the primary outcome:

1. Excluding patients aged <65 years-old
2. Excluding patients admitted to hospitals outside the UK

Secondary outcomes

We used binary logistic regression to assess impact of variables on critical care admission and incident delirium (excluding prevalent delirium), and ordinal logistic regression to assess impact upon care requirements at discharge. Incident delirium was considered as any new diagnosis of delirium by a healthcare professional at any time during admission, where this was not present at admission. Increased care was defined as transitions across three care levels: living at home without formal care, living at home with formal care, or living in a 24-hour long-term care facility.

Results

The study includes data from 5711 individuals with COVID-19 admitted to 55 hospitals in 12 countries. Figure-S1 shows reasons for data exclusion. Table-S2 demonstrates participating site

locations. Median age was 74 and 55.2% were male. Table-1 shows full baseline patient characteristics.

Table-1 – Baseline characteristics of patients included in study

		All patients (N= 5711)	Death during admission		p value
			Yes (N=1596)	No (N=4115)	
Age	Median (IQR) (N= 5,711)	74 (58 – 83)	80 (72 – 87)	69 (54 – 82)	<0.001
	Distribution – N (%)				
	18-49	817 (14.3)	49 (3.1)	768 (18.7)	
	50-64	1,118 (19.6)	156 (9.8)	962 (23.4)	<0.001
	65-79	1,698 (29.7)	537 (33.7)	1,161 (28.2)	
	≥80	2,078 (36.4)	854 (53.5)	1,224 (29.7)	
Female – N (%)		2,562 (44.9)	624 (39.1)	1,938 (47.1)	<0.001
Temperature:	<36 °C	391 (6.9)	134 (8.4)	257 (6.3)	
Distribution – N (%)	36.0 – 37.5 °C	2,977 (52.1)	776 (48.6)	2,201 (53.5)	
	37.5 – 37.9 °C	699 (12.2)	223 (14.0)	476 (11.6)	
	38.0 – 39.0 °C	1,271 (22.3)	348 (21.8)	923 (22.4)	0.001
	>39.0 °C	260 (4.6)	83 (5.2)	177 (4.3)	
	Missing	113 (2.0)	32 (2.0)	81 (2.0)	
Oxygen requirement:	None (FiO₂ 21%)	2,215 (38.8)	574 (36.0)	1,641 (39.9)	
Distribution – N (%)	FiO₂ 22 – 29%	423 (7.4)	96 (6.0)	327 (8.0)	
	FiO₂ 30 – 39%	227 (4.0)	66 (4.1)	161 (4.0)	<0.001
	FiO₂ ≥40%	864 (15.1)	392 (24.6)	484 (11.5)	
	Missing	1,982 (34.7)	468 (29.3)	1,514 (36.8)	
	Body Mass Index	Median (IQR) (N=3,599)	26.7 (23.1 – 31.0)	26.0 (22.4 – 30.5)	26.9 (23.4 – 31.2)
	Distribution – N (%)				
	<18.5	163 (2.9)	46 (2.9)	117(2.8)	
	18.5 – 24.9	1,221 (21.4)	333 (20.9)	888 (21.6)	<0.001
	25.0 – 29.9	1,123 (19.7)	234 (14.7)	889 (21.6)	
	≥30.0	1,092 (19.1)	233 (14.6)	859 (20.9)	
	Missing	2,112 (37.0)	750 (47.0)	1,362 (33.1)	
Symptoms – N (%)	Fever	2,997 (52.5)	783 (49.1)	2,214 (53.8)	<0.001
	Cough/ breathlessness	3,976 (69.6)	1,103 (69.1)	2,873 (69.8)	0.602
	Confusion	1,161 (20.3)	444 (27.8)	717 (17.4)	<0.001
	Other	2,462 (43.1)	617 (38.7)	1,845 (44.8)	
	Prevalent Delirium – N (%)	No	4,288 (75.1)	1,087 (68.1)	3,201 (77.8)
	Yes	1,120 (19.6)	443 (27.8)	677 (16.5)	0.001
	Missing	303 (5.3)	66 (4.1)	237 (5.8)	
Composite delirium (incident/prevalent) – N (%)	No	3,512 (61.5)	818 (51.3)	2,694 (65.5)	
	Yes	1,559 (27.3)	630 (39.5)	929 (22.6)	<0.001
	Missing	640 (11.2)	148 (9.3)	492 (12.0)	
Clinical Frailty Scale – N (%)	1-3	2,069 (36.2)	251 (15.7)	1,818 (44.2)	
	4	571 (10.0)	174 (10.9)	397 (9.7)	<0.001
	5	604 (10.6)	207 (13.0)	397 (9.7)	

	6	880 (15.4)	318 (19.9)	562 (13.7)		
	7	761 (13.3)	308 (19.3)	453 (11.0)		
	8	165 (3.0)	92 (5.8)	73 (1.8)		
	9	31 (0.5)	18 (1.1)	13 (0.3)		
	Missing	630 (11.0)	228 (14.3)	402 (9.8)		
Co-existing condition – N (%)	Any	4,765 (83.4)	1,483 (92.9)	3,282 (79.8)	<0.001	
	Diabetes Mellitus	1,669 (29.2)	544 (34.1)	1,125 (27.3)	<0.001	
	Cardiovascular Disease	2,847 (49.9)	1,013 (63.5)	1,834 (44.6)	<0.001	
	Respiratory Disease	1,459 (25.6)	427 (26.8)	1,032 (25.1)	0.193	
	Cancer	622 (11.0)	234 (14.7)	388 (9.4)	<0.001	
	Mental Health	482 (8.4)	124 (7.8)	358 (8.7)	0.256	
	Dementia	911 (16.0)	387 (24.3)	524 (12.7)	<0.001	
	Human Immunodeficiency Virus	16 (0.3)	0 (0.0)	16 (0.4)	0.013	
	Previous residence – N (%)	Own home no formal care	3,453 (60.5)	760 (47.6)	2,693 (65.4)	
		Own home with formal care	802 (14.0)	285 (17.9)	517 (12.6)	<0.001
24-hour long-term care facility		1,010 (17.7)	442 (27.7)	568 (13.8)		
Missing		446 (7.8)	109 (6.8)	337 (8.2)		
Medications – N (%)	ACE-inhibitors or Angiotensin receptor blockers	1,330 (23.3)	405 (25.4)	925 (22.5)	0.001	
	Non-steroidal anti-inflammatory drugs	328 (5.7)	98 (6.1)	230 (5.6)	0.003	
	Steroids	509 (8.9)	163 (10.2)	346 (8.4)	<0.001	
	Immunosuppressants	177 (3.1)	37 (2.3)	140 (3.4)	0.010	
	Chemotherapy	86 (1.5)	18 (1.1)	68 (1.7)	0.001	
	Anti-retrovirals	34 (0.6)	6 (0.4)	28 (0.7)	0.036	
	Neutrophil to Lymphocyte ratio	Median (IQR) (N= 5,255)	6.0 (3.5 – 10.7)	8.2 (4.7 – 8.2)	5.4 (3.2 – 9.2)	<0.001
		C-Reactive Protein				
	Median (IQR) – mg/L (N= 5,289)	76 (29 – 148)	111 (54 – 197)	63 (23 – 126)	<0.001	
	Distribution – N (%)					
	<10	578 (10.1)	66 (4.1)	512 (12.4)		
	10 – 40	1,072 (18.8)	207 (13.0)	865 (21.0)	<0.001	
	>40	3,639 (63.7)	1,199 (75.1)	2,440 (59.3)		
	Missing	422 (7.4)	124 (7.8)	298 (7.2)		
Ferritin	Median (IQR) – mg/L (N= 1734)	580 (257 – 1249)	681 (322 – 1415)	544 (231 – 1192)	<0.001	
	Distribution – N (%)					
	<100	160 (2.8)	19 (1.2)	141 (3.4)		
	100 – 1000	1,039 (18.2)	268 (16.8)	771 (18.7)	<0.001	
	>1000	535 (9.4)	149 (9.3)	386 (9.4)		
	Missing	3977 (70.0)	1,160 (72.7)	2,817 (68.5)		
Glomerular Filtration Rate	Median (IQR) (N= 5,275)	57.6 (37.8 – 78.8)	43.2 (26.4 – 64.4)	62.7 (44.2 – 82.5)	0.001	
	>90	851 (14.9)	147 (9.2)	704 (17.1)	<0.001	
	60 – 89	1,611 (28.2)	291 (18.2)	1,320 (32.1)		

	45 – 59	1,033 (18.1)	266 (16.7)	767 (18.6)	
	30 – 44	877 (15.4)	345 (21.6)	532 (12.9)	
	15 – 29	561 (9.8)	281 (17.6)	280 (6.8)	
	<15	342 (6.0)	161 (10.1)	181 (4.4)	
	Missing	436 (7.6)	105 (6.6)	331 (8.0)	
Alanine aminotransferase (ALT) – U/L	Median (IQR) (N=4631)	24 (16 – 41)	24 (16 – 40)	24 (16 – 41)	0.895
	Distribution – N (%)				
	<40	3,468 (60.7)	987 (61.8)	2,481 (60.3)	0.329
	≥ 40	1,164 (20.4)	327 (20.5)	837 (20.3)	
	Missing	1,079 (18.9)	282 (17.7)	797 (19.4)	
Confirmation – N (%)	Clinical suspicion	498 (8.7)	80 (5.1)	418 (10.2)	
	PCR	5200 (91.1)	1514 (94.9)	3686 (89.6)	<0.001
	Antibody test	13 (0.2)	2 (0.1)	11 (0.3)	
OUTCOMES					
	Length of stay/ days to death – Median (IQR) (N= 4,939)	8 (4 – 16)	7(4 – 13)	9 (4 – 18)	
Incident delirium – N (%)	None	3,985 (69.8)	957 (60.0)	3,028 (73.6)	<0.001
	Incident with no documented prevalent delirium	439 (7.7)	187 (11.7)	252 (6.1)	
	Incident delirium with documented prevalent delirium	748 (13.1)	321 (20.1)	427 (10.4)	
	Missing	539 (9.4)	9.44 (8.2)	408 (10.0)	
Critical care admission – N (%)	No	5063 (86.7)	1370 (85.8)	3693 (89.7)	
	Yes	647 (11.3)	226 (14.2)	421 (10.2)	<0.001
	Missing	1 (<0.1)	0 (0.0)	1 (<0.1)	

ACE = Angiotensin converting enzyme inhibitors, FiO₂ = Fraction of inspired oxygen, IQR = Interquartile range, PCR = Polymerase chain reaction, P-values= Chi² tests for categorical data, and Mann-Whitney U-test for continuous data.

Mortality

Risk of death increased independently with age and frailty in univariable and multivariable analyses (Table-2), including with age and frailty as continuous variables (Table-S3, online supplement). Risk of death tripled >80 years-old (HR 3.57, 95%CI 2.54–5.02), compared to 18-50, and in very severely frail individuals (CFS 8 vs. CFS 1-3) (HR 3.03, 95%CI 2.29–4.00). Model 1 and 2 are available online (Table-S4). Age and frailty together and not individually as predictor variables improved model of fit

(LR $\chi^2(7)=91.3$, $p<0.001$; Wald $\chi^2(10)=207.9$, $p<0.001$). Additionally, mortality risk increased with age and frailty together in multiplicative interactions (Table-S5, Figure-S2). Delirium was predictive of mortality in univariable but not multivariable analysis. Risk of death increased with higher CRP or ferritin, more severe renal disease, and cancer. Mortality did not differ across BMI cut-offs; risk of death was increased with missing BMI. Figure-1 demonstrates Kaplan-Meier curves for risk of death for frailty and delirium. Results were not affected by sensitivity analyses for ≥ 65 years-old, or UK data only (Table-S6, Table-S7).

Table-2 – Cox regression models for risk of death

	Univariable			Multivariable		
	HR	95% CI	P-value	HR	95% CI	P-Value
Delirium						
No	Ref			Ref		
Yes	1.30	1.17 - 1.44	<0.001	0.97	0.86 - 1.09	0.588
Missing	0.95	0.80 - 1.13	0.562	0.79	0.65 - 0.97	0.028
Frailty Distribution						
1-3	Ref			Ref		
4	2.08	1.71 - 2.52	<0.001	1.63	1.32 - 2.02	<0.001
5	2.30	1.91 - 2.76	<0.001	1.68	1.36 - 2.08	<0.001
6	2.32	1.96 - 2.74	<0.001	1.77	1.45 - 2.17	<0.001
7	2.62	2.22 - 3.10	<0.001	1.90	1.54 - 2.34	<0.001
8	4.48	3.53 - 5.69	<0.001	3.03	2.29 - 4.00	<0.001
9	4.15	2.57 - 6.70	<0.001	2.37	1.38 - 4.06	0.002
Missing	3.15	2.63 - 3.77	<0.001	2.42	1.96 - 2.99	<0.001
Age Distribution						
18- 49 years	Ref			Ref		
50-64 years	2.03	1.47 - 2.80	<0.001	1.96	1.38 - 2.77	<0.001
65-80 years	4.04	3.01 - 5.41	<0.001	2.93	2.10 - 4.09	<0.001
> 80 years	5.07	3.80 - 6.77	<0.001	3.57	2.54 - 5.02	<0.001
Sex						
Female	Ref			Ref		
Male	1.29	1.17 - 1.43	<0.001	1.22	1.09 - 1.36	0.001
NEWS						
0-4 (Low risk)	Ref			Ref		
5-6 (Medium risk)	1.43	1.24 - 1.65	<0.001	1.53	1.31 - 1.78	<0.001
≥ 7 (High risk)	2.14	1.90 - 2.41	<0.001	2.11	1.85 - 2.41	<0.001
Missing	2.00	1.71 - 2.35	<0.001	1.75	1.47 - 2.09	<0.001

CRP						
< 10mg/l	Ref			Ref		
10-40mg/l	1.48	1.12 - 1.95	0.006	1.23	0.92 - 1.65	0.157
>40mg/l	2.53	1.98 - 3.24	<0.001	1.87	1.44 - 2.44	<0.001
Missing	2.55	1.89 - 3.44	<0.001	2.22	1.55 - 3.18	<0.001
Ferritin						
< 100 ng/ml	Ref			Ref		
100 – 1000 ng/ml	2.05	1.29 - 3.27	0.002	1.83	1.14 - 2.93	0.012
>1000 ng/ml	1.95	1.21 - 3.15	0.006	1.75	1.07 - 2.85	0.025
Missing	2.32	1.47 - 3.64	<0.001	1.90	1.20 - 3.00	0.006
Alanine transferase						
< 40 IU/L	Ref			Ref		
> 40 IU/L	1.04	0.92 - 1.18	0.557	1.16	1.01 - 1.33	0.033
Missing	1.11	0.97 - 1.27	0.120	0.95	0.81 - 1.11	0.502
Neutrophil: Lymphocyte Ratio	1.01	1.01 - 1.01	<0.001	1.00	1.00 - 1.01	0.018
BMI						
18.5-25 kg/m ²	Ref			Ref		
<18.5kg/m ²	0.87	0.64 - 1.18	0.371	0.73	0.52 - 1.02	0.069
25-30kg/m ²	0.82	0.69 - 0.97	0.018	0.95	0.79 - 1.13	0.539
>30kg/m ²	0.79	0.67 - 0.93	0.006	1.03	0.86 - 1.24	0.758
Missing	1.40	1.23 - 1.59	<0.001	1.43	1.24 - 1.64	<0.001
eGFR (mL/min/1.73 m²)						
>90	Ref			Ref		
60-89	0.93	0.76 - 1.14	0.479	0.75	0.61 - 0.92	0.006
45-59	1.27	1.04 - 1.55	0.022	0.93	0.75 - 1.15	0.485
30-44	1.95	1.61 - 2.37	<0.001	1.22	0.99 - 1.50	0.056
15-29	2.50	2.05 - 3.06	<0.001	1.37	1.10 - 1.70	0.004
< 15	2.37	1.89 - 2.96	<0.001	1.51	1.19 - 1.93	0.001
Missing	0.94	0.73 - 1.21	0.632	1.01	0.68 - 1.50	0.966
Comorbidities						
Diabetes Mellitus	1.22	1.10 - 1.36	<0.001	1.07	0.96 - 1.20	0.231
Cardiovascular Disease	1.60	1.45 - 1.77	<0.001	1.08	0.96 - 1.21	0.199
Respiratory Disease	1.07	0.96 - 1.20	0.231	0.94	0.84 - 1.06	0.320
Cancer	1.33	1.16 - 1.53	<0.001	1.20	1.04 - 1.39	0.015
Mental Health	0.94	0.78 - 1.13	0.495	0.86	0.70 - 1.04	0.119
Dementia	1.42	1.27 - 1.60	<0.001	1.06	0.92 - 1.22	0.400

NEWS = National Early Warning Score; CRP = C-Reactive Protein; BMI = Body Mass Index; eGFR = Estimated Glomerular Filtration Rate by Modified Diet in Renal Disease formula

Critical care admission

Critical care admissions were more likely with greater illness severity, CRP, or ferritin, or BMI <18.5 or ≥30 (Table-3), and less likely with age, frailty, and dementia. Admissions were six times less likely in >80 years-old compared to 18-50 (OR 0.13, 95%CI 0.08–0.21). Delirium was independently associated with critical care admission (OR 2.67, 95%CI 2.06–3.46). Model 1 and 2 are available online (Table-S8).

Table-3 – Odds ratios derived from logistic regression for secondary outcome of critical care admission

	OR	Univariable 95% CI	P-value	OR	Multivariable 95% CI	P-value
Delirium						
No	Ref			Ref		
Yes	1.01	0.84 - 1.22	0.886	2.67	2.06 - 3.46	<0.001
Missing	1.01	0.78 - 1.32	0.925	1.10	0.79 - 1.54	0.566
Frailty Distribution						
1-3	Ref			Ref		
4	0.54	0.41 - 0.71	<0.001	0.73	0.52 - 1.01	0.059
5	0.27	0.19 - 0.37	<0.001	0.37	0.24 - 0.56	<0.001
6	0.16	0.11 - 0.22	<0.001	0.32	0.21 - 0.51	<0.001
7	0.05	0.03 - 0.10	<0.001	0.10	0.05 - 0.20	<0.001
8	0.02	0.00 - 0.16	<0.001	0.05	0.01 - 0.41	0.005
9	0.12	0.02 - 0.92	0.041	-	-	-
Missing	0.33	0.24 - 0.45	<0.001	0.54	0.37 - 0.79	0.002
Age Distribution						
18- 49 years	Ref			Ref		
50-64 years	1.15	0.92 - 1.44	0.227	1.02	0.78 - 1.34	0.868
65-80 years	0.57	0.45 - 0.71	<0.001	0.68	0.50 - 0.92	0.013
> 80 years	0.07	0.05 - 0.11	<0.001	0.13	0.08 - 0.21	<0.001
Sex						
Female	Ref			Ref		
Male	1.83	1.54 - 2.18	<0.001	1.22	0.97 - 1.52	0.083
NEWS						
0-4 (Low risk)	Ref			Ref		
5-6 (Medium risk)	2.38	1.86 - 3.04	<0.001	1.93	1.46 - 2.54	<0.001

≥7 (High risk)	4.27	3.46 - 5.27	<0.001	4.01	3.13 - 5.15	<0.001
Missing	2.55	1.90 - 3.44	<0.001	3.42	2.36 - 4.96	<0.001
CRP						
< 10mg/l	Ref			Ref		
10-40mg/l	1.60	1.02 - 2.51	0.040	1.44	0.87 - 2.40	0.154
>40mg/l	3.17	2.13 - 4.72	<0.001	1.82	1.14 - 2.88	0.011
Missing	2.93	1.81 - 4.75	<0.001	3.52	1.90 - 6.52	<0.001
Ferritin						
< 100 ng/ml	Ref			Ref		
100 – 1000 ng/ml	3.54	1.77 - 7.07	<0.001	2.05	0.96 - 4.40	0.064
>1000 ng/ml	8.72	4.35 - 17.49	<0.001	3.83	1.76 - 8.35	0.001
Missing	1.24	0.63 - 2.46	0.535	0.91	0.43 - 1.93	0.802
Alanine transferase						
< 40 IU/L	Ref			Ref		
> 40 IU/L	2.47	2.06 - 2.96	<0.001	1.18	0.94 - 1.48	0.144
Missing	0.73	0.56 - 0.95	0.017	0.70	0.50 - 0.98	0.039
Neutrophil: Lymphocyte Ratio						
	1.01	1.00 - 1.01	0.051	1.01	1.00 - 1.02	0.114
BMI						
18.5-25 kg/m ²	Ref			Ref		
<18.5kg/m ²	0.21	0.06 - 0.66	0.008	0.20	0.05 - 0.86	0.031
25-30kg/m ²	1.97	1.52 - 2.56	<0.001	1.33	0.98 - 1.82	0.068
>30kg/m ²	2.71	2.10 - 3.48	<0.001	1.46	1.08 - 1.98	0.014
Missing	0.87	0.67 - 1.13	0.292	0.80	0.58 - 1.09	0.154
eGFR (mL/min/1.73 m²)						
>90	Ref			Ref		
60-89	0.82	0.64 - 1.05	0.11	0.90	0.67 - 1.22	0.504
45-59	0.85	0.65 - 1.11	0.226	1.28	0.91 - 1.79	0.160
30-44	0.71	0.53 - 0.95	0.022	1.21	0.83 - 1.77	0.322
15-29	0.76	0.55 - 1.06	0.108	1.34	0.87 - 2.07	0.184
< 15	0.70	0.47 - 1.05	0.082	0.99	0.60 - 1.64	0.962
Missing	0.39	0.25 - 0.61	<0.001	1.01	0.55 - 1.86	0.973
Comorbidities						
Diabetes Mellitus	1.16	0.97 - 1.38	0.101	1.15	0.92 - 1.43	0.226
Cardiovascular Disease	0.74	0.63 - 0.87	<0.001	1.17	0.94 - 1.47	0.161
Respiratory Disease	0.90	0.74 - 1.09	0.279	1.06	0.84 - 1.34	0.626
Cancer	0.80	0.61 - 1.06	0.125	1.14	0.81 - 1.60	0.464
Mental Health	0.77	0.56 - 1.06	0.112	0.96	0.66 - 1.40	0.842
Dementia	0.06	0.03 - 0.12	<0.001	0.26	0.12 - 0.56	0.001

NEWS = National Early Warning Score; CRP = C-Reactive Protein; BMI = Body Mass Index; eGFR = Estimated Glomerular Filtration Rate by Modified Diet in Renal Disease formula

Incident delirium

Delirium incidence was 9.6%. Incident delirium odds increased with age but not frailty (Table-4). Risk in >80 year-olds was double that of 18-50 (OR 2.21, 95%CI 1.37–3.59). Incident delirium odds were independently associated with male sex, illness severity, and cardiovascular disease. Dementia was not associated with incident delirium. Model 1 is available online (Table-S9).

Table-4 – Odds ratios derived from logistic regression for secondary outcomes of incident delirium

	Univariable			Multivariable		
	OR	95% CI	P-value	OR	95% CI	P-value
Frailty Distribution						
1-3	Ref			Ref		
4	1.49	1.04 - 2.12	0.028	1.07	0.72 - 1.60	0.745
5	1.43	1.01 - 2.04	0.045	1.06	0.71 - 1.58	0.779
6	1.86	1.39 - 2.49	<0.001	1.24	0.86 - 1.79	0.258
7	1.97	1.46 - 2.66	<0.001	1.38	0.94 - 2.03	0.102
8	2.48	1.51 - 4.06	<0.001	1.35	0.75 - 2.44	0.317
9	1.17	0.28 - 4.97	0.830	0.41	0.05 - 3.10	0.386
Missing	1.21	0.84 - 1.75	0.299	0.96	0.63 - 1.45	0.831
Age Distribution						
18- 49 years	Ref			Ref		
50-64 years	1.57	1.01 - 2.42	0.045	1.29	0.82 - 2.03	0.272
65-80 years	2.07	1.38 - 3.09	<0.001	1.59	1.01 - 2.51	0.045
> 80 years	2.93	1.99 - 4.30	<0.001	2.21	1.37 - 3.59	0.001
Sex						
Female	Ref			Ref		
Male	1.24	1.01 - 1.51	0.037	1.26	1.01 - 1.57	0.039
NEWS						
0-4 (Low risk)	Ref			Ref		
5-6 (Medium risk)	1.08	0.81 - 1.43	0.600	1.02	0.76 - 1.38	0.876
≥7 (High risk)	1.76	1.40 - 2.21	<0.001	1.52	1.18 - 1.96	0.001
Missing	1.40	1.00 - 1.97	0.050	1.32	0.91 - 1.91	0.141
CRP						
< 10mg/l	Ref			Ref		
10-40mg/l	1.40	0.93 - 2.13	0.110	1.21	0.78 - 1.89	0.392
>40mg/l	1.49	1.03 - 2.17	0.034	1.15	0.77 - 1.72	0.505
Missing	0.82	0.46 - 1.45	0.499	0.96	0.47 - 1.98	0.923

Ferritin						
< 100 ng/ml	Ref			Ref		
100 – 1000 ng/ml	1.40	0.93 - 2.13	0.110	1.46	0.73 - 2.92	0.283
>1000 ng/ml	1.49	1.03 - 2.17	0.034	1.62	0.78 - 3.36	0.197
Missing	0.82	0.46 - 1.45	0.499	1.02	0.52 - 2.00	0.945
Alanine transferase						
< 40 IU/L	Ref			Ref		
> 40 IU/L	1.08	0.85 - 1.37	0.552	1.17	0.90 - 1.52	0.248
Missing	0.79	0.60 - 1.04	0.088	0.98	0.72 - 1.32	0.873
Neutrophil: Lymphocyte Ratio	1.01	1.00 - 1.02	0.002	1.01	1.00 - 1.01	0.175
BMI						
18.5-25 kg/m ²	Ref			Ref		
<18.5kg/m ²	1.46	0.85 - 2.53	0.172	1.25	0.70 - 2.22	0.455
25-30kg/m ²	0.91	0.66 - 1.25	0.570	0.94	0.67 - 1.31	0.695
>30kg/m ²	0.95	0.70 - 1.31	0.767	1.15	0.82 - 1.62	0.423
Missing	1.16	0.89 - 1.51	0.260	1.06	0.80 - 1.40	0.688
eGFR (mL/min/1.73 m²)						
>90	Ref			Ref		
60-89	0.84	0.61 - 1.16	0.291	0.75	0.53 - 1.05	0.089
45-59	0.94	0.66 - 1.33	0.706	0.71	0.49 - 1.03	0.074
30-44	1.39	0.99 - 1.94	0.055	0.90	0.62 - 1.30	0.575
15-29	1.50	1.04 - 2.17	0.031	0.88	0.58 - 1.32	0.535
< 15	1.14	0.72 - 1.80	0.577	0.76	0.46 - 1.27	0.299
Missing	0.59	0.35 - 0.99	0.046	0.58	0.25 - 1.35	0.210
Comorbidities						
Diabetes Mellitus	1.20	0.97 - 1.48	0.087	1.04	0.82 - 1.30	0.763
Cardiovascular Disease	1.67	1.37 - 2.04	<0.001	1.29	1.03 - 1.62	0.028
Respiratory Disease	1.67	1.37 - 2.04	<0.001	1.13	0.90 - 1.42	0.278
Cancer	1.00	0.74 - 1.37	0.976	0.89	0.64 - 1.24	0.492
Mental Health	1.00	0.70 - 1.42	0.993	1.07	0.75 - 1.55	0.701
Dementia	1.44	1.13 - 1.84	0.003	1.12	0.83 - 1.49	0.460

NEWS = National Early Warning Score; CRP = C-Reactive Protein; BMI = Body Mass Index; eGFR = Estimated Glomerular Filtration Rate by Modified Diet in Renal Disease formula

Transitions of care needs

Increased care risk increased with age, frailty, delirium, dementia, and mental health problems (Table-5). Likelihood of increased care >80 years-old was triple that for 18-50 (OR 3.07, 95%CI 2.25–

4.20). Increased care levels were seven times more likely with severe frailty (CFS 7) than without frailty (CFS 1-3) (OR 7.00, 95%CI 5.27–9.32). Models 1 and 2 are available online (Table-S10).

Table-5 – Odds ratios derived from ordinal logistic regression for secondary outcomes of increased care level on discharge

	Univariable			Multivariable		
	OR	95% CI	P-value	OR	95% CI	P-value
Delirium						
No	Ref			Ref		
Yes	4.22	3.65 - 4.89	<0.001	1.83	1.53 - 2.19	<0.001
Missing	53.46	41.80 - 68.37	<0.001	100.10	73.02 - 137.21	<0.001
Frailty Distribution						
1-3	Ref			Ref		
4	2.69	2.13 - 3.40	<0.001	1.93	1.47 - 2.54	<0.001
5	3.77	3.03 - 4.70	<0.001	2.55	1.94 - 3.34	<0.001
6	8.26	6.82 - 10.01	<0.001	5.09	3.92 - 6.60	<0.001
7	10.9	8.93 - 13.29	<0.001	7.00	5.27 - 9.32	<0.001
8	10.87	7.40 - 15.97	<0.001	6.06	3.73 - 9.85	<0.001
9	7.59	2.94 - 19.55	<0.001	3.68	1.19 - 11.39	0.024
Missing	4.49	3.55 - 5.68	<0.001	1.36	1.00 - 1.85	0.049
Age Distribution						
18- 49 years	Ref			Ref		
50-64 years	1.56	1.24 - 1.97	<0.001	1.37	1.04 - 1.82	0.026
65-80 years	3.95	3.19 - 4.90	<0.001	2.20	1.66 - 2.93	<0.001
> 80 years	7.16	5.80 - 8.83	<0.001	3.07	2.25 - 4.20	<0.001
Sex						
Female	Ref			Ref		
Male	0.70	0.62 - 0.79	<0.001	0.98	0.84 - 1.15	0.812
NEWS						
0-4 (Low risk)	Ref			Ref		
5-6 (Medium risk)	0.84	0.72 - 0.99	0.040	1.10	0.90 - 1.33	0.355
≥7 (High risk)	1.02	0.88 - 1.19	0.788	1.15	0.95 - 1.39	0.159
Missing	0.87	0.69 - 1.10	0.242	0.25	0.18 - 0.36	<0.001
CRP						
< 10mg/l	Ref			Ref		
10-40mg/l	1.23	0.99 - 1.53	0.063	1.02	0.79 - 1.33	0.858
>40mg/l	1.21	1.00 - 1.46	0.052	1.08	0.85 - 1.37	0.529
Missing	2.74	2.07 - 3.61	<0.001	3.58	2.40 - 5.33	<0.001
Ferritin						
< 100 ng/ml	Ref			Ref		

100 – 1000 ng/ml	0.88	0.62 - 1.24	0.460	1.07	0.71 - 1.62	0.745
>1000 ng/ml	0.65	0.45 - 0.96	0.029	1.00	0.63 - 1.59	1.000
Missing	0.99	0.72 - 1.37	0.970	0.86	0.58 - 1.27	0.441
Alanine transferase						
< 40 IU/L	Ref			Ref		
> 40 IU/L	0.53	0.45 - 0.63	<0.001	0.97	0.79 - 1.19	0.778
Missing	1.01	0.86 - 1.18	0.916	1.09	0.89 - 1.33	0.390
Neutrophil: Lymphocyte Ratio	1.01	1.00 - 1.02	0.002	1.00	0.99 - 1.01	0.713
BMI						
18.5-25 kg/m ²	Ref			Ref		
<18.5kg/m ²	2.08	1.48 - 2.93	<0.001	1.24	0.83 - 1.86	0.289
25-30kg/m ²	0.9	0.75 - 1.08	0.239	1.21	0.98 - 1.51	0.083
>30kg/m ²	0.65	0.54 - 0.79	<0.001	1.00	0.79 - 1.27	0.992
Missing	0.86	0.73 - 1.01	0.073	0.91	0.75 - 1.12	0.386
eGFR (mL/min/1.73 m²)						
>90	Ref			Ref		
60-89	0.87	0.72 - 1.05	0.136	0.73	0.58 - 0.91	0.005
45-59	0.99	0.80 - 1.21	0.898	0.71	0.55 - 0.92	0.008
30-44	1.31	1.05 - 1.63	0.018	0.71	0.54 - 0.94	0.016
15-29	1.75	1.34 - 2.28	<0.001	1.00	0.73 - 1.38	0.997
< 15	1.84	1.34 - 2.52	<0.001	1.10	0.75 - 1.62	0.621
Missing	2.67	2.09 - 3.42	<0.001	1.64	1.07 - 2.53	0.024
Comorbidities						
Diabetes Mellitus	1.16	1.02 - 1.33	0.025	0.92	0.78 - 1.09	0.336
Cardiovascular Disease	1.29	1.15 - 1.46	<0.001	1.03	0.88 - 1.21	0.731
Respiratory Disease	0.89	0.78 - 1.02	0.107	0.84	0.71 - 1.00	0.044
Cancer	1.23	1.00 - 1.50	0.045	1.11	0.88 - 1.40	0.361
Mental Health	1.36	1.11 - 1.68	0.003	1.57	1.22 - 2.01	<0.001
Dementia	3.97	3.38 - 4.65	<0.001	1.73	1.39 - 2.16	<0.001

NEWS = National Early Warning Score; CRP = C-Reactive Protein; BMI = Body Mass Index; eGFR = Estimated Glomerular Filtration Rate by Modified Diet in Renal Disease formula

Discussion

Interpretation of results

Age and frailty were independently associated with COVID-19 mortality. This is consistent with risk exhibited for nearly all other illnesses, and does not represent relative risk for COVID-19 compared

to other illnesses; risk of dying increases with age and frailty (6) within “normal” risk (24). However, increases in absolute mortality risk will be most pronounced in these groups, even if relative risk is equivalent to young or robust individuals. It is important to consider the results of likelihood testing, which demonstrated that age and frailty as individual predictors improved the model of fit. Risk continued to increase with increasing age and with increasing frailty. Therefore, the greatest risk will have been exhibited by the oldest and most frail patients. Underlying mechanisms for increased mortality with age and frailty with COVID-19 may include endothelial dysfunction leading to vasoconstriction and organ dysfunction (25, 26), heightened inflammation (27) and pro-coagulant state (25, 26, 28), dysregulated Angiotensin-Converting Enzyme 2 activity promoting viral uptake (28-30), and immunosenescence (28). Immunosenescence is associated with immune system changes that are age-related (31, 32), frailty-related (33), or inactivity-related (34, 35).

Delirium was not independently predictive of mortality, but was associated with critical care admission; delirium itself is an illness severity marker. This may relate to exclusion of prevalent delirium cases, or represent different delirium pathophysiology with COVID-19 compared to other conditions. We demonstrated novel results that frailty, age, delirium, dementia, and mental health diagnoses were independently associated with transitions of care in survivors i.e. adverse functional outcomes. Quality of life is individual and subjective, but increased dependency will have been hugely significant for many individuals. Transitions of care are also likely to have been associated with state-funded health and social care system costs, during a time of international economic recession, which has wider health impacts (36).

What is the external validity of our results?

Previous studies assessing COVID-19 mortality with frailty showed mixed results. These have been predominantly small single site studies (9, 10, 37). Our results are consistent with another study including 1410 UK-hospital and 154 Italian-hospital patients; sub-categorised CFS and age were independently associated with mortality (8). A second UK single site study involving 677 patients demonstrated increased mortality in CFS ≥ 6 (38). A small Italian study demonstrated that a Frailty Index was also predictive of mortality (37), even after removing co-morbidities from the index (39). However, a small UK study showed that age but not continuous CFS was predictive of mortality in univariable analysis; CFS was not included in multivariable analysis (40). Similar results were shown in another UK study (9). Differences may relate to under-powering in smaller studies, or how CFS was recorded or extracted from clinical records. In our study, few patients had missing CFS (11% vs. 32% in the latter study) (9). However, these studies also assessed mortality following discharge, whereas we report mortality during index admission. Whilst this is important to distinguish, we do not consider this explanatory for differences; it is unlikely robust patients were more likely to have been discharged to die outside of hospital. As our data were censored at hospital discharge, this has also been accounted for.

Consistent with results elsewhere, male sex, inflammation, and cancer were associated with mortality (18). However, BMI was not independently predictive of death, which is contrary to previous research (21), although high and low BMI were associated with critical care admission. Studies previously adjusted for age, sex, and co-morbidities, but this is the first study to adjust for frailty. Both being underweight and obese have been associated with frailty (41).

Previous research demonstrated that delirium is a common COVID-19 presentation (12, 18). It is surprising that delirium did not predict mortality in our study. Delirium has been consistently associated with mortality in hospitalised patients with other illnesses (11, 42). A single-site Italian

study demonstrated that delirium, diagnosed against reference criteria by geriatricians, was associated with four-fold increased COVID-19 mortality risk (43). Under-recognition is unlikely to fully explain differences as prevalence was high in our study. Delirium was associated with critical care admission, which is consistent with a Brazilian study (44).

Frailty has been associated with prevalent delirium in COVID-19 (12) and other conditions (11). Incident delirium was not associated with frailty in this study. Additionally, dementia, a classical delirium risk factor, was not associated with risk. Higher risk was demonstrated with cardiovascular disease and illness severity. These differences in patient groups affected may explain differences in COVID-19 mortality with delirium compared to other conditions. Severely ill robust patients may have been as likely to develop delirium as frail patients, but less likely to die. We are not aware of other studies reporting transitions of care in patients with COVID-19. Studies outside of COVID-19 have shown that frailty and cognitive spectrum disorders are associated with increased risk of new discharge to a care home (45, 46).

What is the internal validity of our results?

A major strength of our study is that it was large and multi-centre. This is the largest study to date evaluating how frailty and delirium relate to outcomes in hospitalised patients with COVID-19. Data collectors were not involved in analysis; statistical analysis was conducted by an independent statistician. We included large numbers of variables in multivariable analyses, which had been previously associated with adverse outcomes with COVID-19. We did not collect ethnicity data. Previous research identified that Black African or Caribbean and Bangladeshi individuals are at increased risk of adverse outcomes from COVID-19, although this also relates to socioeconomic

status (47, 48). This personal information requires stricter safeguards (49), and is not internationally standardised.

Data collectors were provided delirium and frailty diagnosis guidance. Prospective data collection was encouraged and diagnoses were made by clinicians. Results provide predictive value of real-world delirium and frailty diagnoses. Given the high overall delirium prevalence, we consider it unlikely that under-diagnosis of delirium significantly impacted upon our overall results. Retrospectively identified data may be vulnerable to documentation errors, and we cannot rule out possibility of data entry errors via REDCap. To counteract this, data managers performed quality control checks on uploaded data, and contacted sites where data were missing or outlying values recorded.

Overall, missing data rates were low; discrete missing categories were included to account for those that were. Highest missing data rates related to BMI (height and weight). This could explain why obesity was not predictive of mortality; missing BMI was associated with mortality. It may have been most likely to be missing in most unwell, or possibly most obese patients. Higher odds of mortality were demonstrated with missing CFS, which is consistent with previous studies (50). Multiple imputation has shown consistent effect of frailty on mortality in other populations (50).

Inclusion of hospitalised patients only is a limitation. The majority of people with COVID-19 had mild symptoms (51), particularly those who were young and robust; inclusion of community cases may have amplified association of frailty with mortality. Conversely, frail individuals may have died unexpectedly, or advance care planning decisions may have been made to avoid admission. Internationally, significant numbers of people who died from COVID-19 died in 24-hour long-term

care facilities (52, 53). We also recognise that our sample may not be internationally representative. As dissemination was via GeMRC (15, 16), more older adults may have been identified if clinicians were working on geriatric medicine wards. This in itself should not have affected main results; data collection was not biased towards outcomes.

Recommendations for future research and clinical practice

Healthcare policy should recognise heightened vulnerability in older adults, particularly those living with frailty. Caution should be exhibited to ensure older adults with frailty are shielded from high risk COVID-19 exposure, such as ensuring isolation procedures during elective surgery admissions. Older and/or frail patients admitted with COVID-19 should undergo holistic assessment, ensuring treatment is proportionate, and in accordance with their wishes. Research identifying underlying mechanisms of adverse outcomes with age and frailty may enable novel intervention development. It is vital older adults with frailty are adequately represented in all COVID-19 research. Vaccines and COVID-19 treatments may have different responsiveness with age or frailty.

Considering high odds of increased care in patients with frailty, urgent funding is needed to enhance community and hospital rehabilitation services (54). At present, longer-term consequences of COVID-19 are unknown. Chronic symptoms of fatigue and systemic upset have been reported even in community-dwelling previously robust adults (14). Further research should focus on understanding mechanisms and adverse recovery predictors, particularly in patients who developed acute sarcopenia (55, 56) or induced frailty (57).

Conclusion

In this international multi-centre study, age, frailty, and morbidity were independently associated with adverse outcomes with COVID-19. Patients who were older or more severely frail were more likely to die, less likely to be admitted to critical care, and more likely to require higher care levels on discharge in survivors. Increased awareness of importance of measuring frailty alongside age and co-morbidities in hospitalised patients will assist clinicians making holistic decisions involving treatment of reversible pathology, prevention of unwanted or burdensome treatment, and early rehabilitation.

References

1. Wang L, He W, Yu X, Hu D, Bao M, Liu H, et al. Coronavirus disease 2019 in elderly patients: Characteristics and prognostic factors based on 4-week follow-up. *The Journal of infection*. 2020;80(6):639-45.
2. Onder G, Rezza G, Brusaferro S. Case-Fatality Rate and Characteristics of Patients Dying in Relation to COVID-19 in Italy. *Jama*. 2020;323(18):1775-6.
3. Guan W-j, Ni Z-y, Hu Y, Liang W-h, Ou C-q, He J-x, et al. Clinical Characteristics of Coronavirus Disease 2019 in China. *New England Journal of Medicine*. 2020;382(18):1708-20.
4. Atkins JL, Masoli JAH, Delgado J, Pilling LC, Kuo C-L, Kuchel GA, et al. Preexisting Comorbidities Predicting COVID-19 and Mortality in the UK Biobank Community Cohort. *The journals of gerontology Series A, Biological sciences and medical sciences*. 2020;75(11):2224-30.
5. Rockwood K, Song X, MacKnight C, Bergman H, Hogan DB, McDowell I, et al. A global clinical measure of fitness and frailty in elderly people. *CMAJ*. 2005;173(5):489-95.
6. Pulok MH, Theou O, van der Valk AM, Rockwood K. The role of illness acuity on the association between frailty and mortality in emergency department patients referred to internal medicine. *Age and ageing*. 2020.
7. National Institute for Health and Care Excellence. COVID-19 rapid guideline: critical care in adults. 2020.
8. Hewitt J, Carter B, Vilches-Moraga A, Quinn TJ, Braude P, Verduri A, et al. The effect of frailty on survival in patients with COVID-19 (COPE): a multicentre, European, observational cohort study. *The Lancet Public Health*. 2020;5(8):e444-e51.

9. Owen RK, Conroy SP, Taub N, Jones W, Bryden D, Pareek M, et al. Comparing associations between frailty and mortality in hospitalised older adults with or without COVID-19 infection: a retrospective observational study using electronic health records. *Age and ageing*. 2020.
10. Miles A, Webb TE, McLoughlin BC, Mannan I, Rather A, Knopp P, et al. Outcomes from COVID-19 across the range of frailty: excess mortality in fitter older people. *European Geriatric Medicine*. 2020.
11. Geriatric Medicine Research Collaborative. Delirium is prevalent in older hospital inpatients and associated with adverse outcomes: results of a prospective multi-centre study on World Delirium Awareness Day. *BMC Medicine*. 2019;17(1):229.
12. Zazzara MB, Penfold RS, Roberts AL, Lee KA, Dooley H, Sudre CH, et al. Probable delirium is a presenting symptom of COVID-19 in frail, older adults: a cohort study of 322 hospitalised and 535 community-based older adults. *Age and ageing*. 2020.
13. O'Hanlon S, Inouye SK. Delirium: a missing piece in the COVID-19 pandemic puzzle. *Age and ageing*. 2020;49(4):497-8.
14. Greenhalgh T, Knight M, A'Court C, Buxton M, Husain L. Management of post-acute covid-19 in primary care. *BMJ*. 2020;370:m3026.
15. Welch C, Geriatric Medicine Research Collaborative. Growing research in geriatric medicine: a trainee perspective. *Age and ageing*. 2020;49(5):733-7.
16. Geriatric Medicine Research Collaborative. Using Social Media and Web-Based Networking in Collaborative Research: Protocol for the Geriatric Medicine Research Collaborative. *JMIR research protocols*. 2018;7(10):e179.
17. Bellelli G, Morandi A, Davis DH, Mazzola P, Turco R, Gentile S, et al. Validation of the 4AT, a new instrument for rapid delirium screening: a study in 234 hospitalised older people. *Age and ageing*. 2014;43(4):496-502.
18. Docherty AB, Harrison EM, Green CA, Hardwick HE, Pius R, Norman L, et al. Features of 20 133 UK patients in hospital with covid-19 using the ISARIC WHO Clinical Characterisation Protocol: prospective observational cohort study. *BMJ*. 2020;369:m1985.
19. Chen N, Zhou M, Dong X, Qu J, Gong F, Han Y, et al. Epidemiological and clinical characteristics of 99 cases of 2019 novel coronavirus pneumonia in Wuhan, China: a descriptive study. *The Lancet*. 2020;395(10223):507-13.
20. Mehta P, McAuley DF, Brown M, Sanchez E, Tattersall RS, Manson JJ. COVID-19: consider cytokine storm syndromes and immunosuppression. *The Lancet*. 2020;395(10229):1033-4.
21. Public Health England. Excess Weight and COVID-19 2020.
22. Levey AS, Coresh J, Greene T, Stevens LA, Zhang YL, Hendricksen S, et al. Using Standardized Serum Creatinine Values in the Modification of Diet in Renal Disease Study Equation for Estimating Glomerular Filtration Rate. *Annals of Internal Medicine*. 2006;145(4):247-54.
23. Smith GB, Prytherch DR, Meredith P, Schmidt PE, Featherstone PI. The ability of the National Early Warning Score (NEWS) to discriminate patients at risk of early cardiac arrest, unanticipated intensive care unit admission, and death. *Resuscitation*. 2013;84(4):465-70.

24. Spiegelhalter D. Use of “normal” risk to improve understanding of dangers of covid-19. *BMJ*. 2020;370:m3259.
25. Varga Z, Flammer AJ, Steiger P, Haberecker M, Andermatt R, Zinkernagel AS, et al. Endothelial cell infection and endotheliitis in COVID-19. *Lancet*. 2020;395(10234):1417-8.
26. Smeda M, Chlopicki S. Endothelial barrier integrity in COVID-19-dependent hyperinflammation: does the protective facet of platelet function matter? *Cardiovascular Research*. 2020;116(10):e118-e21.
27. Schouten LR, van Kaam AH, Kohse F, Veltkamp F, Bos LD, de Beer FM, et al. Age-dependent differences in pulmonary host responses in ARDS: a prospective observational cohort study. *Annals of intensive care*. 2019;9(1):55.
28. Mueller AL, McNamara MS, Sinclair DA. Why does COVID-19 disproportionately affect older people? *Aging (Albany NY)*. 2020;12(10):9959-81.
29. Pinto BGG, Oliveira AER, Singh Y, Jimenez L, Gonçalves ANA, Ogava RLT, et al. ACE2 Expression Is Increased in the Lungs of Patients With Comorbidities Associated With Severe COVID-19. *The Journal of Infectious Diseases*. 2020;222(4):556-63.
30. Fan X, Wang Y, Sun K, Zhang W, Yang X, Wang S, et al. Polymorphisms of ACE2 gene are associated with essential hypertension and antihypertensive effects of Captopril in women. *Clinical pharmacology and therapeutics*. 2007;82(2):187-96.
31. Sapey E, Patel JM, Greenwood HL, Walton GM, Hazeldine J, Sadhra C, et al. Pulmonary Infections in the Elderly Lead to Impaired Neutrophil Targeting, Which Is Improved by Simvastatin. *American Journal of Respiratory and Critical Care Medicine*. 2017;196(10):1325-36.
32. Hazeldine J, Harris P, Chapple IL, Grant M, Greenwood H, Livesey A, et al. Impaired neutrophil extracellular trap formation: a novel defect in the innate immune system of aged individuals. *Aging cell*. 2014;13(4):690-8.
33. Wilson D, Drew W, Jasper A, Crisford H, Nightingale P, Newby P, et al. Frailty is associated with neutrophil dysfunction which is correctable with phosphoinositol-3-kinase inhibitors. *The journals of gerontology Series A, Biological sciences and medical sciences*. 2020.
34. Bartlett DB, Duggal NA. Moderate physical activity associated with a higher naïve/memory T-cell ratio in healthy old individuals: potential role of IL15. *Age and ageing*. 2020;49(3):368-73.
35. Bartlett DB, Fox O, McNulty CL, Greenwood HL, Murphy L, Sapey E, et al. Habitual physical activity is associated with the maintenance of neutrophil migratory dynamics in healthy older adults. *Brain Behav Immun*. 2016;56:12-20.
36. Banks J, Karjalainen H, Propper C. Recessions and health: the long-term health consequences of responses to the coronavirus. *Institute for Fiscal Studies*; 2020.
37. Bellelli G, Rehora P, Valsecchi MG, Bonfanti P, Citerio G, Galimberti S, et al. Frailty index predicts poor outcome in COVID-19 patients. *Intensive Care Medicine*. 2020;46(8):1634-6.
38. Aw D, Woodrow L, Ogliari G, Harwood R. Association of Frailty with Mortality in Older Inpatients with Covid-19: A Cohort Study. *Age and ageing*. 2020.

39. Bellelli G, Rehora P, Citerio G. The role of frailty in COVID-19 patients. *Intensive Care Medicine*. 2020.
40. Knopp P, Miles A, Webb TE, McLoughlin BC, Mannan I, Raja N, et al. Presenting features of COVID-19 in older people: relationships with frailty, inflammation and mortality. *European geriatric medicine*. 2020;1-6.
41. Hubbard RE, Lang IA, Llewellyn DJ, Rockwood K. Frailty, body mass index, and abdominal obesity in older people. *The journals of gerontology Series A, Biological sciences and medical sciences*. 2010;65(4):377-81.
42. Pendlebury S, Lovett N, Smith S, Dutta N, Bendon C, Lloyd-Lavery A, et al. Observational, longitudinal study of delirium in consecutive unselected acute medical admissions: age-specific rates and associated factors, mortality and re-admission. *BMJ Open*. 2015;5(11):e007808.
43. Marengoni A, Zucchelli A, Grande G, Fratiglioni L, Rizzuto D. The impact of delirium on outcomes for older adults hospitalised with COVID-19. *Age and ageing*. 2020.
44. Garcez FB, Aliberti MJR, Poco PCE, Hiratsuka M, Takahashi SdF, Coelho VA, et al. Delirium and Adverse Outcomes in Hospitalized Patients with COVID-19. *Journal of the American Geriatrics Society*.n/a(n/a).
45. Burton JK, Guthrie B, Hapca SM, Cvoro V, Donnan PT, Reynish EL. Living at home after emergency hospital admission: prospective cohort study in older adults with and without cognitive spectrum disorder. *BMC Medicine*. 2018;16(1):231.
46. Romero-Ortuno R, Forsyth DR, Wilson KJ, Cameron E, Wallis S, Biram R, et al. The Association of Geriatric Syndromes with Hospital Outcomes. *Journal of hospital medicine*. 2017;12(2):83-9.
47. Sapey E, Gallier S, Mainey C, Nightingale P, McNulty D, Crothers H, et al. Ethnicity and risk of death in patients hospitalised for COVID-19 infection in the UK: an observational cohort study in an urban catchment area. *BMJ Open Respiratory Research*. 2020;7(1):e000644.
48. Public Health England. Disparities in the risk and outcomes of COVID-19. In: Care DoHaS, editor. 2020.
49. Information Commissioner's Office. Special category data [Available from: <https://ico.org.uk/for-organisations/guide-to-data-protection/guide-to-the-general-data-protection-regulation-gdpr/lawful-basis-for-processing/special-category-data/>].
50. Romero-Ortuno R, Wallis S, Biram R, Keevil V. Clinical frailty adds to acute illness severity in predicting mortality in hospitalized older adults: An observational study. *European journal of internal medicine*. 2016;35:24-34.
51. Wu Z, McGoogan JM. Characteristics of and Important Lessons From the Coronavirus Disease 2019 (COVID-19) Outbreak in China: Summary of a Report of 72 314 Cases From the Chinese Center for Disease Control and Prevention. *Jama*. 2020;323(13):1239-42.
52. Bell D, Comas-Herrera A, Henderson D, Jones S, Lemmon E, Moro M, et al. COVID-19 mortality and long-term care: a UK comparison. *International long term care policy network*; 2020.
53. Comas-Herrera A, Zalakain J, Litwin C, Hsu A, Lemmon E, Henderson D, et al. Mortality associated with COVID-19 outbreaks in care homes: early international evidence. *International long term care policy network*; 2020 26 June 2020.

54. De Biase S, Cook L, Skelton DA, Witham M, ten Hove R. The COVID-19 rehabilitation pandemic. Age and ageing. 2020.
55. Welch C, Hassan-Smith ZK, Greig CA, Lord JM, Jackson TA. Acute Sarcopenia Secondary to Hospitalisation - An Emerging Condition Affecting Older Adults. Aging Dis. 2018;9(1):151-64.
56. Welch C, Greig C, Masud T, Wilson D, Jackson T. COVID-19 and Acute Sarcopenia. Aging Dis. 2021.
57. Mira JC, Gentile LF, Mathias BJ, Efron PA, Brakenridge SC, Mohr AM, et al. Sepsis Pathophysiology, Chronic Critical Illness, and Persistent Inflammation-Immunosuppression and Catabolism Syndrome. Crit Care Med. 2017;45(2):253-62.

Legends

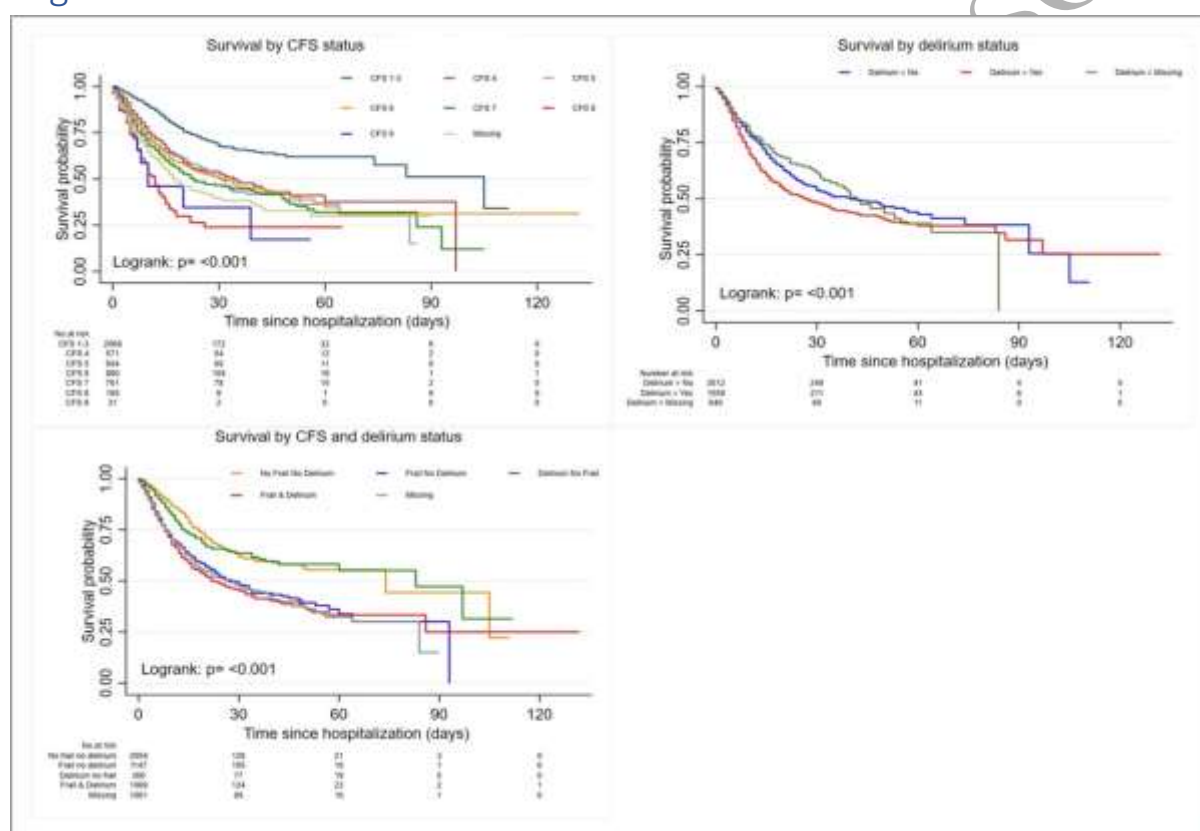


Figure 1 – Kaplan-Meier curves demonstrating risk of death with frailty and delirium

An increased risk of death was demonstrated in the most severely frail patients, whereas delirium was not associated with risk of death in this cohort.

Table 1 – Baseline characteristics of patients included in study

Table 2 – Cox regression models for risk of death

SCRIPT

Table 3 – Odds ratios derived from logistic regression for secondary outcome of critical care admission

Table 4 – Odds ratios derived from logistic regression for secondary outcomes of incident delirium

Table 5 – Odds ratios derived from ordinal logistic regression for secondary outcomes of increased care level on discharge

UNCORRECTED MANUSCRIPT