



A novel multinuclear solid-state NMR approach for the characterization of kidney stones

César Leroy^{1,5}, Laure Bonhomme-Coury¹, Christel Gervais¹, Frederik Tielens^{1,8}, Florence Babonneau¹,
Michel Daudon², Dominique Bazin^{3,4}, Emmanuel Letavernier², Danielle Laurencin⁵, Dinu Iuga⁶,
John V. Hanna⁶, Mark E. Smith⁷, and Christian Bonhomme¹

¹Laboratoire Chimie de la Matière Condensée de Paris,
LCMCP, Sorbonne Université, CNRS, 75005 Paris, France

²AP-HP, Hôpital Tenon, Explorations Fonctionnelles Multidisciplinaires et INSERM UMRS 1155,
Sorbonne Université, Hôpital Tenon, Paris, France

³Institut de Chimie Physique, UMR CNRS 8000, Bâtiment 350, Université Paris Saclay,
91405 Orsay CEDEX, France

⁴Laboratoire de Physique des Solides, UMR CNRS 8502, Bâtiment 510, Université Paris-Sud,
91405 Orsay CEDEX, France

⁵Institut Charles Gerhardt Montpellier, CNRS, ENSCM, Université de Montpellier, Montpellier, France

⁶Department of Physics, University of Warwick, Gibbet Hill Road, Coventry CV4 7AL, United Kingdom

⁷Department of Chemistry, University of Southampton, Southampton SO17 1BJ, United Kingdom

⁸General Chemistry (ALGC) – Materials Modelling Group, Vrije Universiteit Brussel (Free University
Brussels – VUB), Pleinlaan 2, 1050 Brussels, Belgium

Correspondence: Christian Bonhomme (christian.bonhomme@upmc.fr)

Received: 28 March 2021 – Discussion started: 8 April 2021

Revised: 13 June 2021 – Accepted: 15 June 2021 – Published: 20 August 2021

Abstract. The spectroscopic study of pathological calcifications (including kidney stones) is extremely rich and helps to improve the understanding of the physical and chemical processes associated with their formation. While Fourier transform infrared (FTIR) imaging and optical/electron microscopies are routine techniques in hospitals, there has been a dearth of solid-state NMR studies introduced into this area of medical research, probably due to the scarcity of this analytical technique in hospital facilities. This work introduces effective multinuclear and multidimensional solid-state NMR methodologies to study the complex chemical and structural properties characterizing kidney stone composition. As a basis for comparison, three hydrates ($n = 1, 2$ and 3) of calcium oxalate are examined along with nine representative kidney stones. The multinuclear magic angle spinning (MAS) NMR approach adopted investigates the ^1H , ^{13}C , ^{31}P and ^{31}P nuclei, with the ^1H and ^{13}C MAS NMR data able to be readily deconvoluted into the constituent elements associated with the different oxalates and organics present. For the first time, the full interpretation of highly resolved ^1H NMR spectra is presented for the three hydrates, based on the structure and local dynamics. The corresponding ^{31}P MAS NMR data indicates the presence of low-level inorganic phosphate species; however, the complexity of these data make the precise identification of the phases difficult to assign. This work provides physicians, urologists and nephrologists with additional avenues of spectroscopic investigation to interrogate this complex medical dilemma that requires real, multitechnique approaches to generate effective outcomes.

1 Introduction

Kidney stones (KSs) are a major health problem in industrialized countries. For example, the medical costs associated with the treatment of nephrolithiasis in France exceeds EUR 800 million annually. The study of KSs is presently at the heart of a concerted multidisciplinary axis of research involving physicians, physical chemists and spectroscopists (Bazin et al., 2016). Nevertheless, the nucleation and growth of KSs remains largely unknown, and the associated mechanism is based mainly on assumption and incomplete evidence; hence, more thorough and wide-ranging structural investigations are still required (Sherer et al., 2018; Bazin et al., 2020). The growth of KSs is clearly a multifactorial problem, with their chemical composition and morphology presenting considerable variability due to the extreme complexity of the *in vivo* reaction media in which they are formed. The resultant biological materials exhibit very different characteristics as they can emanate from wide-ranging pathological scenarios, including bacterial infection, genetic predispositions, diabetes mellitus and bowel diseases (Bazin et al., 2012). Hence, KSs can be considered as being real examples of hybrid organic–inorganic nanocomposite materials.

The main mineral components comprising hydrated calcium oxalates are the monohydrate $\text{CaC}_2\text{O}_4 \cdot \text{H}_2\text{O}$ (whewellite – COM) and dihydrate $\text{CaC}_2\text{O}_4 \cdot 2\text{H}_2\text{O}$ (wed-dellite – COD) species, although amorphous calcium oxalate can also be observed (Gehl et al., 2015; Ruiz-Agudo et al., 2017). The trihydrate form, $\text{CaC}_2\text{O}_4 \cdot 3\text{H}_2\text{O}$ (caoxite – COT) is almost never observed *in vivo* but can be synthesized in an aqueous solution. COD is characterized by a zeolitic structure exhibiting a true structural challenge. It is considered as being one of the very few natural MOFs (metal organic frameworks; Huskić et al., 2016; Dazem et al., 2019), and its chemical formula is better represented by $\text{CaC}_2\text{O}_4 \cdot (2 + x)\text{H}_2\text{O}$ ($x \leq 0.5$; Petit et al., 2018). “Structural” and “zeolitic” water molecules are, therefore, distinguished. Calcium phosphates and other mineral phases can also be detected in KSs, i.e., hydroxyapatite ($\text{Ca}_{10}(\text{PO}_4)_6(\text{OH})_2$), which may be partially carbonated, brushite ($\text{CaHPO}_4 \cdot 2\text{H}_2\text{O}$) or struvite ($\text{NH}_4\text{MgPO}_4 \cdot 6\text{H}_2\text{O}$; Gardner et al., 2021). The organic components (from a few percent to a major fraction) include, e.g., proteins (collagen among them), uric acid, lipids, triglycerides, etc. The nature of the organic–inorganic interfaces remain largely unknown to date. This chemical and structural complexity at several scales requires the use of a wide variety of characterization methods. Recently, elaborate experiments took advantage of the last development in TEM (transmission electron microscopy; Gay et al., 2020) and of synchrotron radiation (Bazin et al., 2012). In hospitals, optical microscopy, Fourier transform infrared (FTIR), FTIR microscopy, SEM (scanning electron microscopy) and X-ray diffraction are used in routine mode. Curiously, solid-state NMR has been used very rarely in the context of KSs (and other pathological cal-

cifications), apart from sparse ^{13}C and ^{31}P studies (Bak et al., 2000; Jayalakshmi et al., 2009; Reid et al., 2011, 2013; Li et al., 2016; Dessombz et al., 2016), which is unlike other human hard tissues such as bones and teeth. This is probably due to the fact that solid-state NMR instruments are not widely available in hospital settings. It is also stressed that some KSs are small so that the intrinsic lack of sensitivity associated to NMR may be a drawback. Other nuclei, such as ^1H and ^{43}Ca , can act as potential NMR targets. However, ^1H solid-state NMR remains a rather specialized technique because of the relative inefficiency of magic angle spinning (MAS) in producing really high-resolution data from most systems. ^{43}Ca ($I = 7/2$) is particularly insensitive (as a result of its extremely low natural abundance, $\sim 0.14\%$, and low γ , $-1.8028 \times 10^7 \text{ rad s}^{-1} \text{ T}^{-1}$, 57.2 MHz at 20 T).

In this work, a comprehensive multinuclear solid-state NMR approach is presented that facilitates the detailed structural analysis of KSs and the related synthetic hydrated calcium oxalate phases (COM, COD and COT) associated with their composition. The synthetic phases were obtained by carefully controlling the precipitation of calcium salts in aqueous solutions, as described below in Sect. 6 (Leroy, 2016). In total, nine KSs were studied systematically, with some of them exhibiting similar NMR fingerprints. The spectra of five of them (KS1 \rightarrow KS5) are presented here. They come from the KS collection of the Tenon hospital (Paris, France) led by Michel Daudon (the collection counts tens of thousands of samples from all origins, exhibiting the largest variety of size, chemical composition and morphology worldwide). Our main goal here is to reach out to the physician community and, more specifically, nephrologists, urologists and biologists. NMR methods are presented at a moderate to high magnetic field (i.e., 7.0 to 16.4 T MHz) in order to make them much more widely accessible. Occasionally, further developments at an ultra-high magnetic field (up to 35.2 T) are proposed to the user. Particular emphasis is placed on high-resolution ^1H MAS NMR, with homonuclear decoupling and the complete interpretation of spectra based on structural data, and ^{43}Ca MAS NMR. To the best of our knowledge, these nuclei have never been used as spectroscopic probes for KS studies (apart from a unique ^{43}Ca MAS NMR study by Bowers and Kirkpatrick, 2011). A complete experimental protocol is then presented for the reconstruction of ^{13}C NMR spectra, including organic/inorganic and/or rigid/mobile components. Finally, the intriguing role of phosphates in KSs is partially deciphered by 2D ^1H – ^{31}P heteronuclear correlation (HETCOR) MAS NMR experiments despite the low phosphate content in KSs.

2 Quick and reliable assignment of hydrated calcium oxalate and organic phases by ^1H high-resolution solid-state NMR experiments

2.1 CRAMPS (Combined Rotation And Multiple Pulses Spectroscopy) approach

In terms of NMR sensitivity, ^1H greatly exceeds that of ^{13}C and ^{43}Ca . Moreover, it is an $I = 1/2$ nucleus, leading to quantitative data much more rapidly if relaxation delays are carefully set. It follows that ^1H is a target nucleus in the study of crystalline hydrated calcium oxalate phases and KSs. Moreover, as KSs are bio-nanocomposites, ^1H can be considered as being a spectroscopic spy present both in the organic and inorganic components, making the study of the interfaces possible eventually. In the absence of local dynamics, the strong ^1H – ^1H dipolar interaction is a major issue in ^1H solid-state NMR, leading to considerable broadening of the resonances. Current trends to reach the highest ^1H NMR resolution combine ultra-fast MAS, up to 111 kHz or above (Samoson, 2019), with an ultra-high magnetic field, up to 35.2 T, (Gan et al., 2017), in order to average the strong dipolar couplings. Indeed, the homogeneous character of the homonuclear dipolar interaction implies poor MAS efficiency at low to moderate spinning frequencies (Schmidt-Rohr and Spiess, 1994; note that the temperature increase, inside a 0.7 mm diameter rotor, is estimated to be roughly 20 °C in the fast/ultra-fast regime, i.e., $\nu_{\text{rot}} > 30$ kHz). This point is of prime importance as calcium oxalate structures may undergo subtle structural modifications upon heating (Deganello, 1981; Shepelenko et al., 2019; see also Sect. 6). More generally, for a 2.5 mm probe, the temperature increase is < 5 °C at 5 kHz, and 40 °C at 30 kHz. For a 7 mm probe, the order of magnitude is 5 °C at 5 kHz.

However, such leading edge equipment is not widely available. An alternative is to use the CRAMPS sequence at a moderate spinning frequency ($\nu_{\text{rot}} < 12$ kHz; Paruzzo and Emsley, 2019). The DUMBO sequence (Decoupling Using Mind-Boggling Optimization) belongs to the CRAMPS family (Lesage et al., 2003). Using this approach, the internal temperature increase remains moderate for all rotor diameters. Moreover, this methodology can be successfully implemented on almost all magnets. Moreover, larger rotor diameters may be used, which can be interesting in terms of sensitivity. To the best of our knowledge, synthetic COM, COD and COT samples were never investigated by ^1H high-resolution solid-state NMR. The corresponding spectra are presented in Fig. 1. At $\nu_{\text{rot}} = 12$ kHz, standard ^1H MAS NMR spectra (Fig. 1a) are all characterized by very broad and almost featureless line shapes. Such spectral fingerprints are not useful for analytical purposes due to the strong overlap of the resonances. DUMBO decoupling leads to a drastic increase in resolution and to very characteristic features for each synthetic hydrate.

The COT crystallographic structure exhibits six inequivalent sites for protons (Heijnen et al., 1985), whereas only three resonances are clearly observed at $\delta_{\text{iso}}(^1\text{H}) = 3.36, 5.95$ and 6.53 ppm (parts per million; Fig. 1a). A realistic assumption is that some resonances are so close that they cannot be distinguished even under DUMBO decoupling. It has been shown previously (Eckert et al., 1988; Pourpoint et al., 2007) that $\delta_{\text{iso}}(^1\text{H})$ can be related to the shortest $\text{O}-\text{H}\cdots\text{O}$ bond length in hydrogen bond networks. The general trend is that $\delta_{\text{iso}}(^1\text{H})$ strongly increases with the shortening of $\text{O}-\text{H}\cdots\text{O}$. Interestingly, the six nonequivalent hydrogens can be distinguished based on $\text{O}-\text{H}\cdots\text{O}$ distances, leading to three distinct groups (Fig. 2 and Table A1 in the Appendix), namely 1.668–1.679 Å/1.809–1.837 Å/1.957–1.978 Å. It is stressed here that the distances were obtained after extensive optimization of the geometry of the COT structure at density functional theory (DFT) level (the same comment holds for the COM and COD structures; see Sect. 6). According to the literature (Pourpoint et al., 2007), a variation in $\text{O}-\text{H}\cdots\text{O}$ of ~ 0.3 Å is related to a $\delta_{\text{iso}}(^1\text{H})$ variation of ~ 3.5 ppm, which is in rather good agreement with the results presented here (i.e., the shorter the distance, the higher the isotropic ^1H chemical shift). We mention also (Table A1) that each proton of the structure is involved in a relatively high number of $\text{H}\cdots\text{O}$ contacts (from three to four, with $\text{O}-\text{H}\cdots\text{O} \leq 3$ Å). The 3 Å cut-off is realistic when considering “weak” H bonds (Steiner, 2002). In other words, the shortest $\text{O}-\text{H}\cdots\text{O}$ distance directly dictates $\delta_{\text{iso}}(^1\text{H})$, whereas the number of $\text{H}\cdots\text{O}$ contacts is more representative of the electrostatic/dispersion contributions at a given H position (Steiner, 2002). As all protons of COT are characterized by a large number of $\text{H}\cdots\text{O}$ contacts, we assume a certain character of “rigidity” in the structure at room temperature and very limited local dynamics (Fig. 3c). Under this simple assumption, at most three resolved $\delta_{\text{iso}}(^1\text{H})$ are expected due to similarities in $\text{O}-\text{H}\cdots\text{O}$ distances (see above), which is in good agreement with the experimental data (Fig. 1a). Therefore, the ^1H COT assignments are the following, using the numbering given in Table A1: 3.36 ppm for H1/H6, 5.95 ppm for H3/H5 and 6.53 ppm for H2/H4. We note that partial deuteration could be of great help in increasing the resolution further.

In the case of COM, the four H crystallographic sites (H11, H12, H21 and H22; Deganello, 1981) are characterized by a large range of $\text{O}-\text{H}\cdots\text{O}$ distances (from 1.647 to 1.957 Å) and a restricted number of $\text{H}\cdots\text{O}$ contacts (from 1 to 3; Table A1). Therefore, a less rigid structure is expected at room temperature (when compared to COT). Rapid flips of H_2O molecules could lead to partial averaging of $\delta_{\text{iso}}(^1\text{H})$ of protons belonging to the same molecule (Fig. 3). Using the numbering given in Table A1, the average $\text{O}-\text{H}\cdots\text{O}$ distances for H11/H12 and H21/H22 are very similar (i.e., 1.802 and 1.795 Å, respectively). A unique resonance is therefore expected, which is in full agreement with the ^1H DUMBO MAS NMR spectrum of COM (one resonance centered at 5.26 ppm; Figs. 1a and 2). Data obtained at 100 K

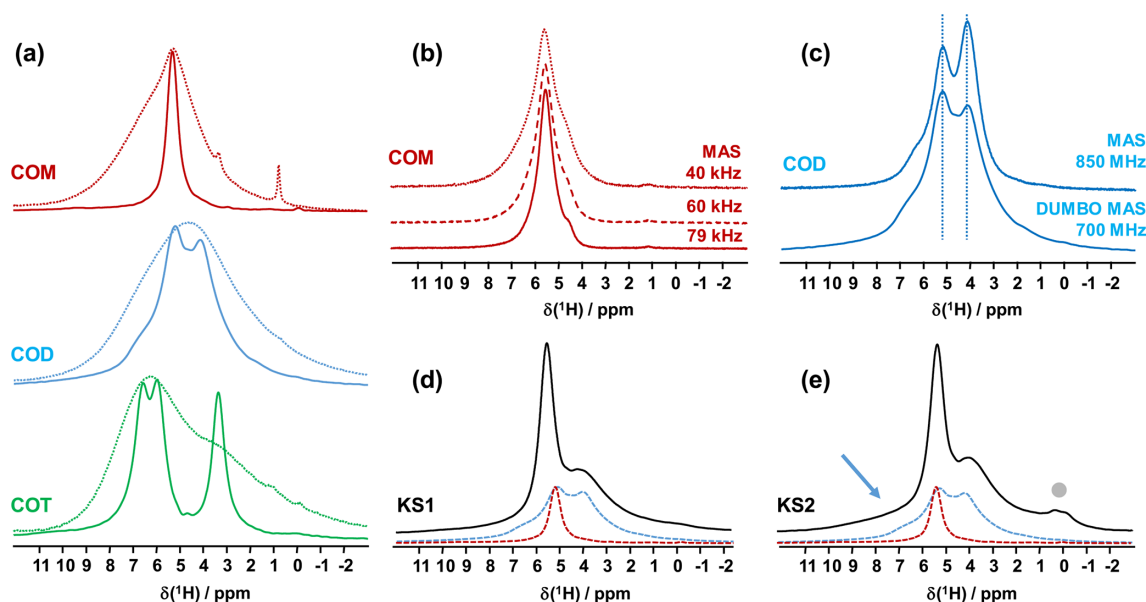


Figure 1. (a) ^1H MAS (dashed lines) and ^1H DUMBO MAS (solid lines) NMR spectra of COM (in red), COD (in blue) and COT (in green; $\nu_{\text{rot}} = 12$ kHz, 700 MHz, 16.4 T). Only the isotropic resonances are represented. (b) ^1H very fast MAS (40, 60 and 79 kHz) NMR spectra of COM at a very high magnetic field (850 MHz). (c) Comparison of the ^1H NMR spectra of COD obtained under DUMBO MAS ($\nu_{\text{rot}} = 12$ kHz, 700 MHz) and very fast MAS ($\nu_{\text{rot}} = 79$ kHz, 850 MHz) conditions. Vertical dashed lines are for illustration purposes only. (d) ^1H DUMBO MAS NMR spectrum of KS1 ($\nu_{\text{rot}} = 12$ kHz, 700 MHz). The red and blue dashed lines correspond to the experimental ^1H DUMBO MAS NMR spectra of COM and COD, respectively. (e) ^1H DUMBO MAS NMR spectrum of KS2 ($\nu_{\text{rot}} = 12$ kHz, 700 MHz). The plain light gray circle indicates the presence of organic components in KS2. The blue arrow indicates the superposition of organic components (aromatic region) and the deshielded shoulder of COD.

(see Fig. A2) demonstrated the presence of four resolved ^1H resonances for COM. It is worth noting that $\delta_{\text{iso}}(^1\text{H})$ for H11, H12, H21 and H22 in COM and H3/H5 in COT are experimentally in very close agreement with the associated $\text{O}-\text{H}\cdots\text{O}$ distances. From one synthetic sample to the other, $\delta_{\text{iso}}(^1\text{H})$ may vary slightly under DUMBO conditions (~ 0.3 ppm). COM is always obtained as a final product, as shown by the X-ray powder diffraction (XRD). Subtle variations are observed, depending on the degree of the disorder present, as demonstrated very recently by Shepelenko et al. (2019).

The ^1H spectrum of COD (Fig. 1a) is a priori complex, as it corresponds to the superposition of structural and zeolitic water molecules (Tazzoli and Domeneghetti, 1980; Izatulina et al., 2014). It is much broader than the spectra corresponding to COM and COT. More specific features centered at $\delta_{\text{iso}}(^1\text{H}) = 4.11$, 5.17 and ~ 6.5 (shoulder) ppm are observed (Fig. 1a). When compared to the COT spectrum, the spectral resolution decreases, as expected, from the partial disorder of the zeolitic water molecules. The detailed examination of selected $\text{O}-\text{H}\cdots\text{O}$ distances (Table A1) allowed us to propose a partial assignment of the resonances. For that purpose, a model (relaxed at the DFT level), which corresponds to $\text{CaC}_2\text{O}_4 \cdot (2 + 0.375)\text{H}_2\text{O}$, was first calculated (or $\text{Ca}_8\text{C}_{16}\text{O}_{32}(\text{H}_2\text{O})_{16}(\text{H}_2\text{O})_3$). The water molecules located in the channels of the zeolitic structure are represented in italics

in the preceding formula. Taking into account the number of $\text{H}\cdots\text{O}$ contacts (in full analogy with the approach described above for COM and COT), among the 19 water molecules, seven molecules are considered as being less rigid (or potentially mobile), of which four of them are structural and three are zeolitic. The remaining 12 water molecules are considered as being rigid. Typical example of rigid (H4) and less rigid (H33/H34) water molecules are presented in Fig. 3b. From Fig. 2, it is then possible to predict the expected ranges of $\delta_{\text{iso}}(^1\text{H})$ for COD. The rules applied are that rigid water molecules correspond to two distinct $\delta_{\text{iso}}(^1\text{H})$ (line 4), whereas less rigid water molecules correspond to a single average $\delta_{\text{iso}}(^1\text{H})$ (averaging of line 5 gives line 6; averaging of line 7 gives line 8). The sum of lines 4, 6 and 8 (in blue) corresponds to the expected ^1H spectrum for COD. On this basis, it is expected (i) that $\delta_{\text{iso}}(^1\text{H})$ is distributed over a much larger range when compared to COM and COT and (ii) that some maxima should be observed (at least two, corresponding to large number of overlapping triangles in Fig. 2). Points (i) and (ii) are in very good agreement with the experimental observations. All in all, the relative predicted positions for $\delta_{\text{iso}}(^1\text{H})$ resonances are in agreement with the experimental data for COM, COD and COT (bottom of Fig. 2), validating the proposed assignments.

As a first conclusion of this section, ^1H DUMBO MAS NMR spectra for COM, COD and COT correspond to use-

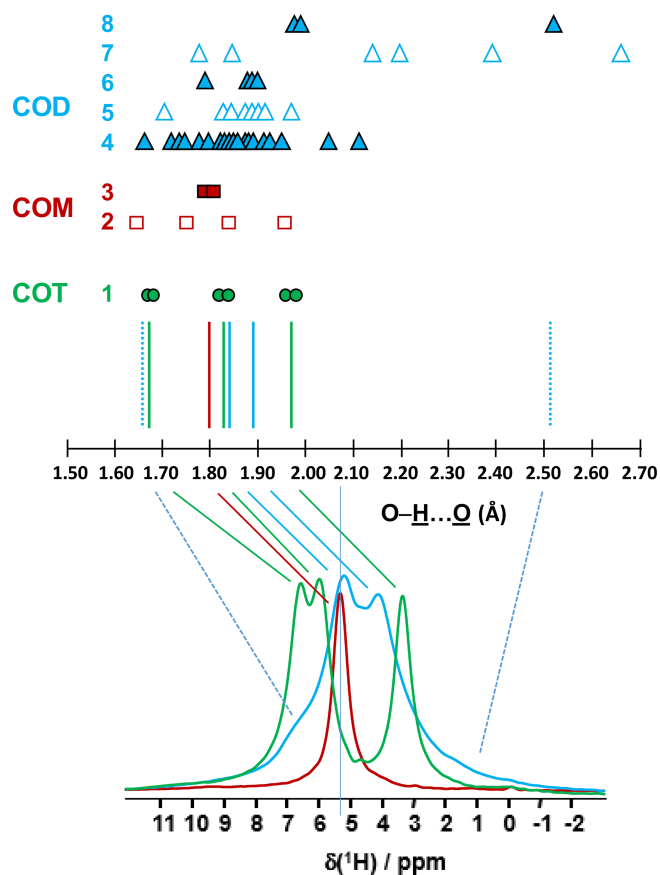


Figure 2. Prediction of the relative positions of $\delta_{\text{iso}}(^1\text{H})$ for COM (red), COD (blue) and COT (green) as a function of the shortest O–H...O distances (in Ångström; hereafter Å). The general rules are as follows: (i) for a given O–H...O distance, a $\delta_{\text{iso}}(^1\text{H})$ is associated (vertical colored solid lines), and (ii) if local dynamics are present, averaged O–H...O distances are first calculated. All distances are derived from optimized geometries at the DFT level (Table A1 and Sect. 6). The effect of eventual local dynamics in the case of the “less rigid” structure is taken into account. For line 1, the structure of COT is considered as being “rigid” (plain green circles). On the basis of the shortest O–H...O distance, the six inequivalent protons can be associated in three groups. To each group, a single average $\delta_{\text{iso}}(^1\text{H})$ is assigned. A total of three lines for COT is predicted (represented by the three vertical green solid lines). For line 2, the structure of COM is considered as being less rigid (open squares), while for line 3 the corresponding averaged distances are represented by plain squares. A single average $\delta_{\text{iso}}(^1\text{H})$ is associated as the averaged distances are very close. A total of one line for COM is predicted. The COD case is shown in lines 4 to 8, where COD exhibits both rigid (plain triangles; line 4) and less rigid water molecules (open triangles in line 5 for the four structural water molecules and in line 7 for the three zeolitic water molecules). For line 6, the corresponding averaged distances for the structural water molecules are represented by plain triangles, and for line 8, the corresponding averaged distances for the zeolitic water molecules are represented by plain triangles. A continuum of $\delta_{\text{iso}}(^1\text{H})$ is predicted for COD. The vertical blue dashed lines correspond to the expected limits of $\delta_{\text{iso}}(^1\text{H})$. The two vertical solid blue lines correspond to local maxima, adding lines 4, 6 and 8. At the bottom, the superposition of the ^1H DUMBO MAS NMR spectra for COM (red), COD (blue) and COT (green; see Fig. 1a) is shown. The solid and dashed lines connect the experimental data and the predicted $\delta_{\text{iso}}(^1\text{H})$.

ful fingerprints for analytical purposes as they are clearly characteristic for each phase. Such fingerprints can be used for the analysis of ^1H NMR spectra of KSs (see below). We emphasize that ^1H spectra with an excellent signal-to-noise ratio were obtained within minutes. As $\delta_{\text{iso}}(^1\text{H})$ values are very sensitive to H-bond networks and to local motional averaging, studies performed on synthetic COM, COD and COT were necessary prior to the detailed analyses of KSs. Nevertheless, the following comments have to be made at this stage: (i) first, the ^1H DUMBO MAS

methodology ($\nu_{\text{rot}} = 12$ kHz, 700 MHz) is comparable to the very fast MAS/very high magnetic field approach ($\nu_{\text{rot}} \sim 80$ kHz, 850 MHz) without any multiple pulses decoupling. In Fig. 1b, the ^1H MAS NMR spectra of COM are presented at various fast/very fast rotation frequencies, from $\nu_{\text{rot}} = 40$ to ~ 80 kHz. As in the case of the DUMBO MAS approach, a single resonance (with a small shoulder) was observed, showing a continuously decreasing linewidth with increasing the MAS frequency. The linewidth obtained at ~ 80 kHz is still broader than the one observed under DUMBO MAS

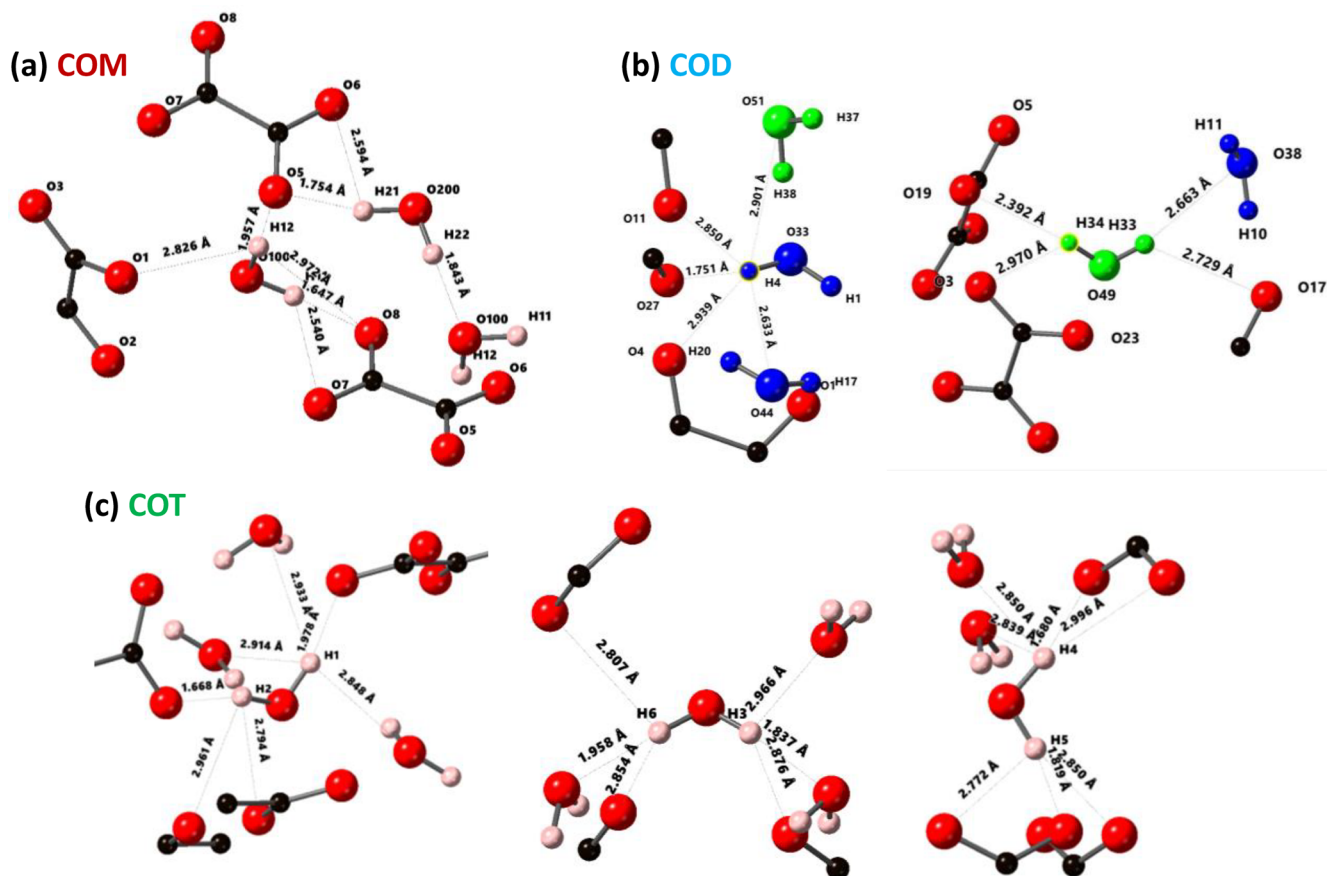


Figure 3. Structural details of COM (a), COD (b) and COT (c). For each proton of the water molecules, the shortest O–H...O distance (in Å) is represented, together with the number of H...O contacts (3 Å cut-off). For COT, the number of H...O contacts is high (three to four), and the COT structure is considered as being rigid. In the case of COD, the structural and zeolitic water molecules are represented in blue and green, respectively. A selection of rigid (H4) and less rigid (H33 or H34) water molecules is presented. All distances and the number of H...O contacts are summarized in Table A1. Color code: red is O, black is C and light pink is H.

conditions. In Fig. 1c, the two approaches are compared in the case of COD. The resolution is slightly enhanced under very fast MAS at 79 kHz, but it remains comparable to DUMBO conditions at 12 kHz. More importantly, the relative intensities are not strictly preserved, indicating that some distortions of the line shapes may occur under DUMBO conditions. It follows that only semi-quantitative data can be extracted, at best, in the case of complex mixtures of hydrated calcium oxalate phases. Moreover, dynamics at room temperature may impact the efficiency of the DUMBO decoupling.

Finally, two KSs (KS1 and KS2) were studied by ^1H DUMBO MAS NMR (Fig. 1d and e). In the case of KS1, a mixture of COM and COD is immediately detected (in full agreement with FTIR and XRD; not shown here). As stated above, a slight deviation of $\delta_{\text{iso}}(^1\text{H})$ for COM is observed. A semi-quantitative analysis of the COM/COD proportions is possible and could be systematically compared to FTIR analyses (as routinely obtained in hospitals). In addition to COM and COD resonances, the ^1H DUMBO MAS NMR spectrum

of KS2 exhibits small new contributions that can be attributed to organic moieties (such as proteins). In this case, a semi-quantitative analysis of the KSs appears more difficult to perform. Working at much higher magnetic field, 35.2 T (Gan et al., 2017), and under ultra-fast MAS ($\gg 100$ kHz) should lead to increased resolution and easier direct quantification of the spectra. Finally, we mention the fact that DUMBO experiments may be sensitive to local dynamics, especially in the intermediate regime (Paruzzo and Emsley, 2019). It may involve some discrepancies between ^1H and ^{13}C NMR data in terms of quantification (see Sect. 4).

2.2 $T_2^*(^1\text{H})$ editing and ^1H – ^1H double-quantum (DQ) experiments

Another KSs sample, KS3, that was studied contained a large proportion of organic moieties (as shown by FTIR). Another option to increase the ^1H NMR resolution is to implement standard Hahn echoes with increasing delays, τ , (up to several milliseconds) and synchronization with the MAS fre-

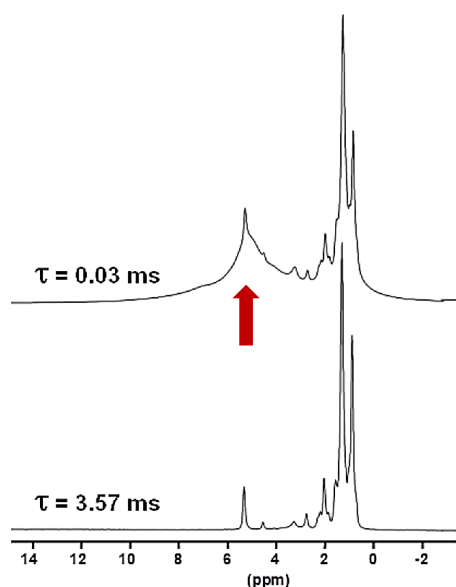


Figure 4. ^1H Hahn echo MAS NMR spectra for KS3 recorded at 16.4 T. τ was synchronized with the rotation frequency, which is shown here as $\nu_{\text{rot}} = 30$ kHz. No temperature control was implemented, leading to a $\sim 40^\circ\text{C}$ increase in the sample temperature and the associated increase in local dynamics. The vertical red arrow corresponds to the resonance coming from COM (see also Fig. 1a and b).

quency. The magnetization associated to the protons characterized by short $T_2^*(^1\text{H})$ will dephase very rapidly. ^1H MAS echoes ($\nu_{\text{rot}} = 30$ kHz) for KS3 are presented in Fig. 4. From XRD data (not shown here) confirmed by ^{13}C CP MAS NMR data (see Sect. 4), KS3 contains COM as a major mineral phase. For long τ , sharp lines (associated to mobile components) were obtained, whereas the broader COM component, around 5.2 ppm, was totally suppressed. $\delta_{\text{iso}}(^1\text{H})$ values agree with unsaturated fatty acids ($\delta_{\text{iso}}(^1\text{H}) \sim 5.25$ ppm; Ren et al., 2008). The presence of triglycerides is excluded as the CH and CH_2 resonances of the glycerol backbone ($\delta_{\text{iso}}(^1\text{H}) \sim 5.0$ and 4.0 ppm, respectively) were not detected.

Such a level of resolution allowed for the implementation of J-MAS-derived pulse schemes, such as the ^1H – ^1H double quantum-filtered (DQF) correlation spectroscopy (COSY) MAS experiment (based on isotropic $J(^1\text{H}$ – $^1\text{H})$ couplings). This experiment is part of the toolbox for a more general dynamics-based spectral editing research topic applied to biological solids (Mroue et al., 2016; Matlahov and van der Wel, 2018; Gopinath and Veglia, 2018). The ^1H – ^1H DQF COSY MAS spectrum is presented in Fig. 5a for KS3. All resonances of the mobile fatty acid chains were assigned in a straightforward way, demonstrating the pertinence of this through-bond correlation experiment. On the other hand, dipolar-based double quantum (DQ) experiments can be implemented to establish through-space proximities between protons (such as back to back or BABA; Feike et al., 1996).

It is a distinct advantage to perform such experiments under very fast MAS (here 79 kHz). Indeed, the spectral resolution is drastically increased, leading to an easier observation of the correlation peaks. The ^1H – ^1H DQ BABA MAS NMR spectrum of KS3 is presented in Fig. 5b. The ^1H resonance corresponding to the COM phase is clearly evidenced on the ^1H projection and on the 2D diagonal (red arrows). Moreover, red dashed ovals indicate correlations involving the protons of the immobile proteins contained in KS3 (essentially the $^1\text{H}^N$ – $^1\text{H}^\alpha$, $^1\text{H}^\alpha$ – $^1\text{H}^\beta$ regions). ^1H spin diffusion experiments should help to highlight actual correlations between the organic and inorganic components at the interface (Schmidt-Rohr and Spiess, 1994).

3 Natural abundance ^{43}Ca solid-state NMR experiments

Natural abundance solid-state ^{43}Ca MAS NMR spectroscopy remains a challenge. Indeed, the NMR characteristics of this quadrupolar nucleus ($I = 7/2$) are clearly unfavorable, as natural abundance is 0.14% and low γ ($\nu_0 = 57.2$ MHz at 20 T). Nevertheless, the following four main experimental approaches have been successfully developed during the last few years: (i) using large volume rotors (7 mm; ~ 400 mg of sample) at high magnetic field (20 T), under moderate MAS (~ 5 kHz) and implementing DFS (double frequency sweep) excitation scheme (Sect. 6); (ii) using much smaller rotors (3.2 mm; ~ 20 mg of sample at ultra-high magnetic field (35.2 T) and under moderate/fast MAS (~ 18 kHz); (iii) using dynamic nuclear polarization (DNP) to strongly enhance the ^{43}Ca polarization, usually in the indirect mode (from ^1H to ^{43}Ca); (iv) using labeling in ^{43}Ca (starting from an enriched calcite precursor; Laurencin et al., 2021; Smith, 2020; Laurencin and Smith, 2013). Here, we follow the approach in (i), which is by far the easiest to implement in most NMR facilities worldwide (as long as a low γ probe is available).

The first contributions related to the study of synthetic calcium oxalates hydrates by ^{43}Ca MAS NMR spectroscopy were proposed by Wong et al. (2006) for COT and by Bowers and Kirkpatrick (2011) for the three hydrated phases. The latter claimed that the COM line shape could be attributed to an averaged Gaussian signal due to a local disorder in the structure (Tazzoli and Domeneghetti, 1980). Colas et al. (2013) demonstrated that a high signal-to-noise ratio is necessary to extract reliable quadrupolar parameters from natural abundance ^{43}Ca MAS NMR spectra and reinvestigated the COM phase. Instead of a Gaussian contribution, two distinct resonances were evidenced, which is in agreement with the crystallographic data ($\delta_{\text{iso}}(^{43}\text{Ca}) = -2.6$ ppm, $C_Q = 1.50$ MHz, $\eta_Q = 0.60$; $\delta_{\text{iso}}(^{43}\text{Ca}) = 0.7$ ppm, $C_Q = 1.60$ MHz, $\eta_Q = 0.70$). The ^{43}Ca MAS NMR spectra of COM, COD and COT, recorded at 20.0 T, are presented in Fig. 6a. All spectra were obtained in natural abundance in a reasonable amount of experimental time (~ 2 h for COM and

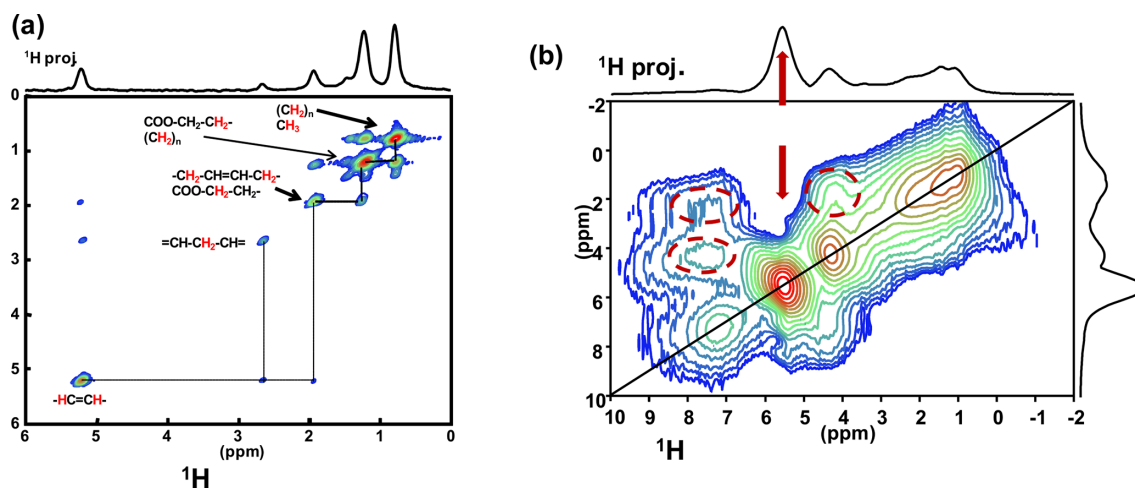


Figure 5. (a) ^1H – ^1H DQF COSY MAS NMR spectrum for KS3 at $\nu_{\text{rot}} = 30$ kHz recorded at 16.4 T. Here, no temperature control was implemented, leading to a $\sim 40^\circ\text{C}$ increase in the local temperature and, therefore, of local dynamics. All peaks are assigned to contributions from unsaturated mobile fatty acids (with unsaturations). (b) ^1H – ^1H DQ BABA MAS NMR spectrum for KS3 at $\nu_{\text{rot}} = 79$ kHz recorded at 16.4 T (no temperature control; SQ–SQ, single quantum–single quantum, representation). The recoupling period is two rotor periods. Off-diagonal correlations (immobile organic moieties) are highlighted by dashed red ovals. The red arrows indicate the COM contribution.

COT; ~ 4 h for COD). The ^{43}Ca NMR fingerprints obtained allow for unambiguous distinctions of the three phases. The sharpest line (characterized by the smallest C_Q) is observed for COT (one unique crystallographic site). For this particular phase, second-order quadrupolar broadening is efficiently suppressed at 20 T, leading directly to $\delta_{\text{iso}}(^{43}\text{Ca}) = -0.1$ ppm. This value is slightly different from the one reported by Wong et al. (2006; i.e., -4.2 ppm). Such a discrepancy can be attributed to a difference in chemical shift referencing (Gervais et al., 2008). The associated quadrupolar parameters for COT (Wong et al., 2006) were $C_Q = 1.55$ MHz, $\eta_Q = 0.72$. C_Q is probably overestimated, as such a value would definitely produce second-order quadrupolar broadening under MAS at 20.0 T (see above the quadrupolar parameters for COM). Finally, a rather featureless spectrum is obtained for COD (one crystallographic site), exhibiting a much larger linewidth than for COT ($\delta_{\text{iso}}(^{43}\text{Ca}) \sim -2.6$ ppm, $C_Q \sim 1.60$ MHz, $\eta_Q \sim 0.20$). We assign this broadening to the distribution of zeolitic water molecules (leading consequently to a slight distribution of $\delta_{\text{iso}}(^{43}\text{Ca})$). Hence, it is demonstrated that natural abundance ^{43}Ca MAS NMR spectroscopy is useful for characterizing hydrated calcium oxalate phases. The use of moderate MAS is sufficient to retrieve a satisfactory resolution as characteristic $C_Q(^{43}\text{Ca})$ are usually small/very small (< 1.8 MHz). However, the $\delta_{\text{iso}}(^{43}\text{Ca})$ range covered by these three phases is making this NMR parameter less sensitive to distinguishing the hydrates. This comes from the fact that $\delta_{\text{iso}}(^{43}\text{Ca})$ is mainly determined by the coordination of the Ca atoms and the mean $\langle \text{Ca}-\text{O} \rangle$ distances. These parameters are almost identical for COM, COD and COT (eight-fold coordination for COM and COD; seven-fold coordination for COT; range of averaged Ca–O

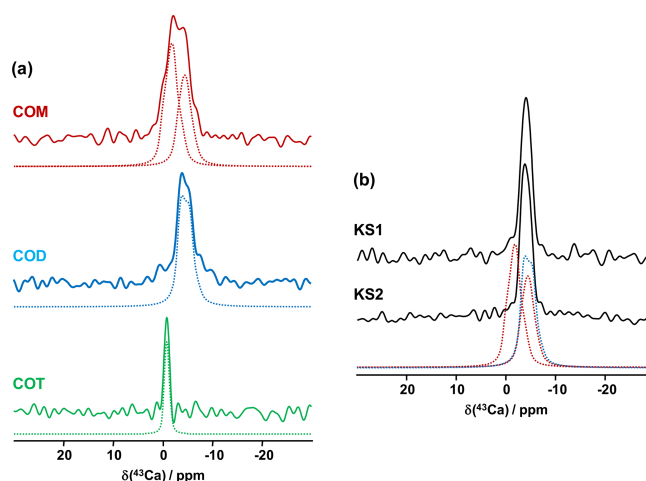


Figure 6. (a) Natural abundance ^{43}Ca MAS NMR spectra of COM (red), COD (blue) and COT (green) recorded at 20.0 T ($\nu_{\text{rot}} = 3$ to 5 kHz). The dashed lines correspond to fits. (b) Natural abundance ^{43}Ca MAS NMR spectra of KS1 and KS2. The red dashed lines correspond to the two resonances associated to COM. The blue dashed line corresponds to the ^{43}Ca MAS NMR spectrum of COD.

distances, i.e., 2.47 – 2.49 Å). This last comment is rather in contradiction with previous conclusions proposed in the literature (Bowers and Kirkpatrick, 2011).

The natural abundance ^{43}Ca MAS NMR spectra of KS1 and KS2 are presented in Fig. 6b. They are largely similar to the COD spectrum overall. The contribution of a COM component is hardly discernable (though it is present, especially in KS1; see Fig. 7). As stated above, the structure of COM is subject to subtle structural variations which could lead to the

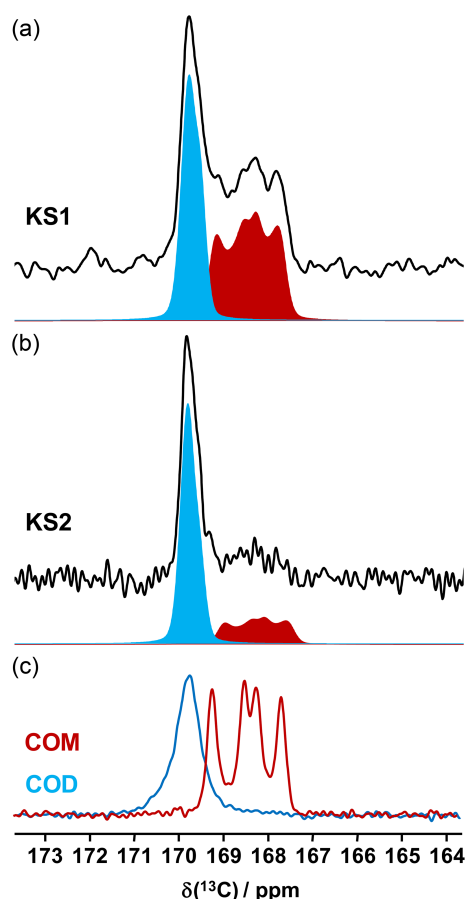


Figure 7. ^{13}C CP MAS NMR spectra of (a) KS1 and (b) KS2 (recorded at 16.4 T, $\nu_{\text{rot}} = 5$ kHz) and the corresponding COM (red) and COD (blue) contributions. (c) ^{13}C CP MAS NMR spectra of the synthetic COM (red line) and COD (blue line) recorded under similar conditions.

overlap of the two ^{43}Ca resonances. In other words, though interesting in principle, natural abundance ^{43}Ca MAS NMR spectroscopy (inherently associated with the limited signal-to-noise ratio) should not be used as a first solid-state NMR tool of investigation for KSs. However, ^{43}Ca NMR would benefit from working at a ultra-high magnetic field (35 T) in order to drastically increase the resolution and enhance ^{43}Ca NMR analytic capabilities.

4 Back to ^{13}C NMR: spectral edition and reconstruction of spectra

^{13}C NMR data related to synthetic calcium oxalate phases and KSs are the most represented in the literature. This is probably due to the fact that the spectral resolution is high under MAS and that CP (cross-polarization) MAS experiments can easily be implemented even at low or moderate magnetic field. Typical ^{13}C CP MAS NMR spectra for COM and COD are presented in Fig. 7. A total of four isotropic

resonances are observed for COM, as expected from XRD data (Colas et al., 2013), and one unique broader resonance is observed for COD, as expected from XRD data, considering the disorder associated to the zeolitic water molecules. Such a disorder has an impact on the resolution of the ^{13}C NMR spectra.

It is observed that the chemical shift range of interest is very restricted (~ 4 ppm from 167 to 171 ppm), corresponding to $\sim 0.8\%$ of the whole ^{13}C isotropic chemical shift range. ^{13}C CP MAS NMR spectra for KS1 and KS2 are also presented in Fig. 7. The presence of COM and COD components is clearly evidenced and could be quantified if necessary (by increasing the signal-to-noise ratio, S/N , significantly). The S/N is adequate here for coarse quantification. For better accuracy, a longer experimental time will be necessary. Moreover, NMR experiments will be combined with denoising techniques developed recently by Laurent and Bonhomme (2020).

As a matter of fact, a single experiment at fixed contact time (usually > 5 ms) is sufficient, in principle, for quantitative purposes, as ^1H – ^{13}C dipolar couplings are comparable for all ^{13}C sites (differences in relative intensities can be evidenced at much short contact time, i.e., < 0.5 ms). The case of KS3 is by far more complex. As stated in Sect. 1, a given KS may include a complex organic component containing lipids, triglycerides, membrane components, glycoproteins (like the Tamm–Horsfall protein) and glycosaminoglycans, among other species (Reid et al., 2011). The approximate chemical composition of KS3 is $\sim 10\%$ proteins, $\sim 20\%$ – 25% COM and $\sim 65\%$ amorphous silica (Dessombz et al., 2016). In Fig. 8, we propose a robust protocol to reconstruct the ^{13}C MAS NMR spectra starting from well-identified subspectra. At a short contact time (0.8 ms), all carbon-containing species are detected, corresponding to both sharp and broad lines (Fig. 8a).

Then, a $T_{1\rho}(^1\text{H})$ filter was applied by increasing the contact time by a factor of ~ 10 , leading to the drastic reduction in the intensities of the broad components. The four resonances of COM are clearly observed (insert in Fig. 8b). COD is absent, which is in agreement with powder XRD and FTIR data. It follows that the proton spin baths corresponding to COM and the broad components are independent; spin diffusion and domain size measurements could be implemented as complementary experiments (Schmidt-Rohr and Spiess, 1994). The 1D ^1H – ^{13}C refocused INEPT J-MAS NMR sequence (Fig. 8c) allowed a selective extraction of the mobile components corresponding to the fatty acids (see also Fig. 5a). The unsaturated nature is clearly evidenced by the shift at $\delta_{\text{iso}}(^{13}\text{C}) \sim 130$ ppm. Finally, the ^{13}C CP MAS NMR spectrum (Fig. 8a; bottom) could be reconstructed with resonances from (i) the COM phase and its associated spinning sidebands (in red), (ii) fatty acids characterized by very sharp lines (in purple) (iii) and proteins (in brown; Cavanagh et al., 2007), for which a precise attribution cannot be given at this stage.

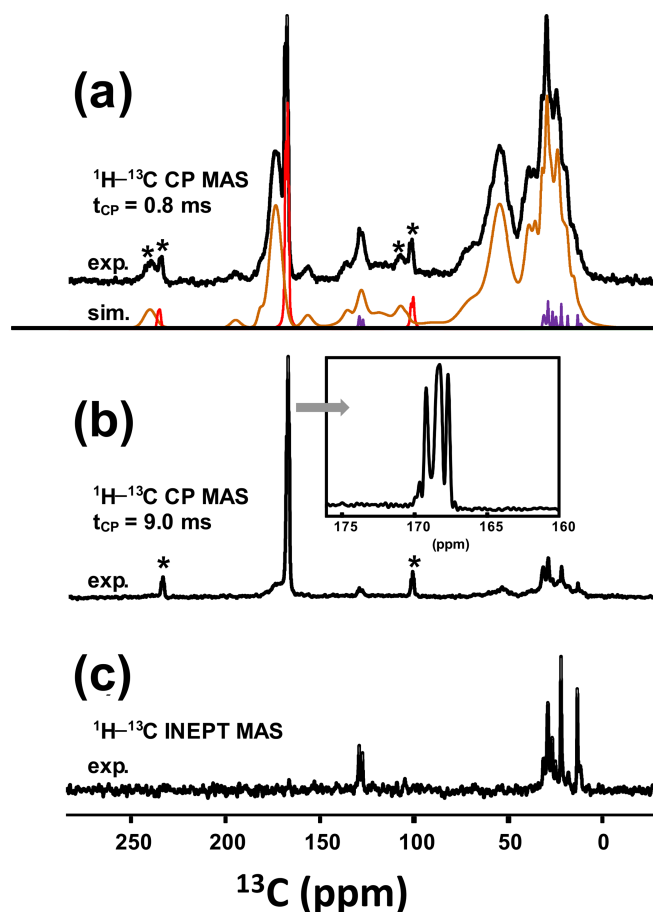


Figure 8. (a) ^{13}C CP MAS NMR spectrum of KS3 (recorded at 7.0 T using a short contact time, i.e., 0.8 ms; $\nu_{\text{rot}} = 5$ kHz). The experimental spectrum is decomposed into the following three components: COM (in red), fatty acids (in purple) and proteins (in brown). (b) ^{13}C CP MAS NMR spectrum of KS3 (recorded at 7.0 T using a long contact time, i.e., 9.0 ms). The inset highlights the COM contribution (four resonances, with two of them almost overlapping; Colas et al., 2013). (c) ^1H - ^{13}C refocused INEPT J-MAS NMR spectrum of KS3 (recorded at 7.0 T). The unsaturations of the fatty acids are clearly evidenced at $\delta_{\text{iso}}(^{13}\text{C}) \sim 130$ ppm. The asterisk (*) indicates the spinning sidebands.

5 The ubiquitous (but elusive) presence of phosphorus in KSs: ^{31}P MAS and CP MAS experiments

Bak et al. (2000) used ^{31}P MAS and CP MAS experiments to evidence phosphate-containing phases in KSs. The presence of phosphate groups in KSs is not unusual and is observed mainly by FTIR (Fig. A1). However, their exact chemical nature remains unclear. Phosphates in KSs can correspond to (i) mineral phases, such as substituted (carbonated) hydroxyapatite ($\text{Ca}_{10}(\text{PO}_4)_6(\text{OH})_2$), brushite ($\text{CaHPO}_4 \cdot 2\text{H}_2\text{O}$) or struvite ($\text{NH}_4\text{MgPO}_4 \cdot 6\text{H}_2\text{O}$), and (ii) organic phosphates present in phospholipids (in the cell membrane) and/or DNA,

RNA and adenosine triphosphate (ATP) molecules (Butusov and Jernelöv, 2013). Usually, phosphates are found as minor components in KSs, making ^{31}P NMR attractive given the high inherent signal sensitivity of ^{31}P (which is also an $I = 1/2$ nucleus). A total of six KSs (exhibiting COM as the major phase and the apparent absence of phosphate phases by powder XRD) were studied here. The representative ^{31}P MAS and CP MAS NMR spectra of the KSs are presented in Fig. 9.

The ^{31}P NMR fingerprint of KS4 is specific (Fig. 9a), whereas KS5 has a ^{31}P fingerprint analogous to four other KSs (Fig. 9b). The acquisition time is ~ 2 to 3 h, demonstrating that the amount of phosphate species is indeed small in all samples. One notes a large distribution of $\delta_{\text{iso}}(^{31}\text{P})$, corresponding not only to structural disorder but also to strong chemical variability. In order to facilitate the assignment of $\delta_{\text{iso}}(^{31}\text{P})$, ^1H - ^{31}P HETCOR CP MAS NMR experiments under active temperature control ($T = -20^\circ\text{C}$) were implemented as well (Fig. 9c). In total, three clear correlations were observed, i.e., $\delta_{\text{iso}}(^{31}\text{P}) = 4.6$ ppm \leftrightarrow $\delta_{\text{iso}}(^1\text{H}) = 8.7$ ppm, $\delta_{\text{iso}}(^{31}\text{P}) = 4.6$ ppm \leftrightarrow $\delta_{\text{iso}}(^1\text{H}) = 5.7$ ppm and $\delta_{\text{iso}}(^{31}\text{P}) \sim 0.25$ – 0.30 ppm \leftrightarrow $\delta_{\text{iso}}(^1\text{H}) \sim 5.0$ ppm. Reasonable assignments are the following (Godinot et al., 2016): (i) the peak centered at $\delta_{\text{iso}}(^{31}\text{P}) = 4.6$ ppm is assigned to struvite, i.e., $\text{NH}_4\text{MgPO}_4 \cdot 6\text{H}_2\text{O}$ (Bak et al., 2000). The correlation centered at $\delta_{\text{iso}}(^{31}\text{P}) = 4.6$ ppm \leftrightarrow $\delta_{\text{iso}}(^1\text{H}) = 8.7$ ppm (ammonium groups) is attributed to $\text{PO}_4^{3-}/\text{NH}_4^+$. The correlation centered at $\delta_{\text{iso}}(^{31}\text{P}) = 4.6$ ppm \leftrightarrow $\delta_{\text{iso}}(^1\text{H}) = 5.7$ ppm concerns water molecules. It is interesting to note that the amount of struvite is extremely small (almost absent in the ^{31}P MAS NMR spectrum of KS4 and KS5; Fig. 9a and b). (ii) The resonance at $\delta_{\text{iso}}(^{31}\text{P}) = 0.3$ ppm may be attributed to phosphates in phospholipids (in this case, $\delta_{\text{iso}}(^{31}\text{P})$ is in the ~ 1 to -1 ppm range). However, correlations with $\delta_{\text{iso}}(^1\text{H}) < 3$ ppm are almost absent (such resonances should be characteristic for long alkyl chains in phospholipids). Consequently, we assign the ^{31}P resonance to inorganic (hydrated) orthophosphates. (iii) $\delta_{\text{iso}}(^{31}\text{P}) \sim 2.7$ ppm could be potentially assigned to amorphous calcium phosphate with a rather small (rather unusual) level of protonation (this resonance is underestimated in the CP MAS experiment; Fig. 9a). (iv) $\delta_{\text{iso}}(^{31}\text{P}) \ll 0$ ppm resonances are assigned to pyro- and/or polyphosphates. The ^{13}C CP MAS NMR spectra and ^{31}P (MAS and CP MAS) NMR spectra of all samples studied here are given in Figs. A3 and A4, respectively.

6 Syntheses of hydrated calcium oxalate, kidney stones samples and NMR methods

Synthesis. Calcium chloride (CaCl_2) and sodium oxalate ($\text{Na}_2\text{C}_2\text{O}_4$) were purchased from Sigma-Aldrich and used as received. All syntheses were carried out using distilled water. For COM, at 40°C , equimolar aqueous solutions of

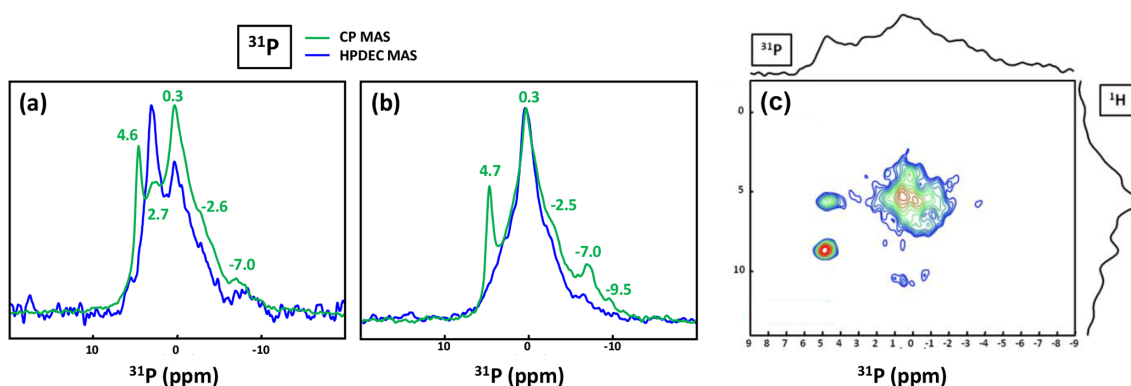


Figure 9. (a) ^{31}P MAS under high-power $\{^1\text{H}\}$ decoupling (in blue) and CP MAS (in green) under high-power $\{^1\text{H}\}$ decoupling NMR spectra of KS4. Some specific chemical shifts are highlighted. (b) ^{31}P MAS under high-power $\{^1\text{H}\}$ decoupling (in blue) and CP MAS (in green) NMR spectra of KS5 (representative of an ensemble of five KSs). Some specific chemical shifts are highlighted. (c) ^1H – ^{31}P HETCOR CP MAS NMR spectrum of KS4 (temperature control at -20°C). All spectra shown here were recorded at 16.4 T.

$\text{Na}_2\text{C}_2\text{O}_4$ and CaCl_2 (0.1 mol. L^{-1}) were added simultaneously, dropwise, in a few milliliters of water under magnetic stirring. The mixture was left mixing under these conditions during 2 h before filtration and was then washed with cold water before drying under air. For COD, a $\text{Na}_2\text{C}_2\text{O}_4$ aqueous solution (0.1 mol. L^{-1}) and a CaCl_2 solution (1.0 mol. L^{-1} , $\text{Ca/Ox} = 10$) were prepared the day prior to the reaction and stored between 2 – 6°C overnight. The solution of $\text{Na}_2\text{C}_2\text{O}_4$ was added dropwise to the CaCl_2 solution in an ice bath ($T < 7^\circ\text{C}$) under magnetic stirring. The mixture was left under stirring for 15 min before filtration and was then washed with cold water before drying under air. For COT, in an ice bath, two equimolar ($0.001 \text{ mol. L}^{-1}$) aqueous solutions of $\text{Na}_2\text{C}_2\text{O}_4$ and CaCl_2 were slowly added simultaneously, dropwise, in a few milliliters of water under vigorous magnetic stirring. The mixture was left under stirring for 15 min before filtration and was then washed with cold water before drying under air. All COM, COD and COT samples were obtained as white fine powders. COD and COT were rapidly stored between 2 – 6°C , while COM could be stored at ambient temperature.

Kidney stones. The samples were provided by Michel Daudon (Tenon Hospital, Paris, France). The choice of the diameter of the used NMR rotor was dictated by the initial size of the KSs and the implemented experiments. In the case of large KSs, smaller pieces were studied as powders by NMR.

NMR methods. Warning: the COM structure is highly sensitive to temperature variations ($\geq 15^\circ\text{C}$). The lowest MAS frequencies have to be implemented for all investigated nuclei and active regulation of the sample temperature (Bruker BCU-Xtreme cooling unit). Most of the ^1H MAS and DUMBO MAS NMR spectra presented in Fig. 1 were obtained at 700 MHz (Bruker AVANCE III spectrometer), using a 2.5 mm Bruker MAS probe spinning the sample at 12 kHz (20 to 40 scans; 10 s recycle delay for quantitative measure-

ments; 10°C in temperature; $t_{90^\circ}(^1\text{H}) = 3.0 \mu\text{s}$; $24 \mu\text{s}$ duration of the shape length at 113 kHz radio frequency (RF) field). The DUMBO experiment was first set up with glycine as a test sample (including the scaling of the isotropic chemical shift) and then optimized for each compound. Some ^1H MAS NMR spectra were obtained at 850 MHz, using a 1 mm JEOL MAS probe (spinning the sample up to 79 kHz; four scans; 3 s recycle delay; $t_{90^\circ}(^1\text{H}) = 1.70 \mu\text{s}$). Synchronized Hahn echoes (Fig. 4) were performed at 700 MHz, using a 2.5 mm Bruker MAS probe spinning the sample at 30 kHz (64 scans; 5 s recycle delay; $t_{90^\circ}(^1\text{H}) = 2.8 \mu\text{s}$; no active regulation of the temperature in order to increase local dynamics; the increase in temperature is estimated to $\sim 40^\circ\text{C}$). The ^1H – ^1H DQF COSY MAS NMR experiment (Fig. 5) was performed at 700 MHz, using a 2.5 mm Bruker MAS probe at 30 kHz (32 scans; 2 s recycle delay; $t_{90^\circ}(^1\text{H}) = 2.8 \mu\text{s}$; 256 increments in t_1 dimension; no active regulation of the temperature in order to increase local dynamics and magnitude mode). The ^1H – ^1H SQ-DQ BABA MAS NMR experiment (Fig. 5) was performed at 850 MHz, using a 1 mm JEOL MAS NMR probe spinning the sample at 79 kHz (16 scans; 3 s recycle delay; $t_{90^\circ}(^1\text{H}) = 1.70 \mu\text{s}$; two BABA loops, 426 increments in t_1 dimension and no active regulation of the temperature). All ^1H NMR spectra were referenced using adamantane (1.85 ppm) as a secondary reference. All natural abundance ^{43}Ca NMR spectra (Fig. 6) were obtained at 850 MHz (Bruker AVANCE III spectrometer), using a 7 mm low- γ Bruker MAS single channel NMR probe spinning the sample at 3 to 5 kHz. A DFS (double frequency sweep; Iuga et al., 2000) enhancement scheme, followed by a 90° selective pulse of $1.5 \mu\text{s}$, was used (DFS pulse length of 2 ms, $\text{RF} \sim 8 \text{ kHz}$ and a convergence sweep from 400 to 50 kHz; 5600 to 18 000 scans; 0.8 s recycle delay). All ^{43}Ca chemical shifts were referenced at 0.0 ppm to a 1.0 mol. L^{-1} aqueous solution of CaCl_2 (Gervais et al., 2008). The ^1H – ^{13}C RAMP (ramped amplitude) CP MAS experiments (Fig. 7)

were obtained at 700 MHz (Bruker AVANCE III spectrometer) using a 2.5 mm Bruker MAS double resonance NMR probe spinning the sample at 5 kHz (600 to 1200 scans; 3 s recycle delay; $t_{90^\circ}({}^1\text{H}) = 3.1 \mu\text{s}$; 2 to 8 ms contact time). The ${}^{13}\text{C}$ MAS NMR spectra presented in Fig. 8 were obtained at 300 MHz (Bruker AVANCE III spectrometer) using a 7 mm Bruker MAS double resonance NMR probe spinning the sample at 5 kHz (328 scans; 3 s recycle delay; $t_{90^\circ}({}^1\text{H}) = 5.2 \mu\text{s}$; 0.8 and 9.0 ms contact time; refocused INEPT MAS: 6000 scans; 3 s recycle delay; 5.2 and $3.2 \mu\text{s}$ $\pi/2$ pulse on ${}^1\text{H}$ and ${}^{13}\text{C}$ respectively; no active regulation of the temperature). All ${}^{13}\text{C}$ NMR spectra were referenced using adamantane (38.48 ppm) as a secondary reference. ${}^{31}\text{P}$ 1D and 2D NMR spectra presented in Fig. 9 were obtained at 700 MHz (Bruker AVANCE III spectrometer) using a 2.5 mm Bruker MAS double resonance NMR probe spinning the sample at 30 kHz (≈ 4000 scans for high-power $\{{}^1\text{H}\}$ decoupling experiments and ≈ 3700 for CP MAS experiments; recycle delay: 10 s for high-power $\{{}^1\text{H}\}$ decoupling experiments; 30° flip angle; 3 s for CP MAS experiments; $t_{90^\circ}({}^1\text{H}) = 2.0 \mu\text{s}$; 5.0 ms contact time for CP MAS experiments). For the ${}^1\text{H}$ – ${}^{31}\text{P}$ HETCOR RAMP CP MAS experiment, the number of scans was 400, the recycle delay was 3 s, $t_{90^\circ}({}^1\text{H}) = 2.0 \mu\text{s}$, the contact time was 5.0 ms, with 96 increments in t_1 dimension, and there was an active regulation of the temperature at -20°C .

Relaxation of crystallographic structures. Starting from the crystallographic data, COM (Daudon et al., 2009), COD (Tazzoli and Domeneghetti, 1980) and COT (Basso et al., 1997) structures were relaxed at DFT level. The unit cell parameters and the atomic positions were optimized, as previously described for COM (Colas et al., 2013). The Vienna Ab initio Simulation Package (VASP) was used (Kresse and Hafner, 1993, 1994; Kresse and Furthmüller, 1996). The corresponding crystallographic information files (CIFs) are available upon request.

7 Conclusions and perspectives

This study has demonstrated that the solid-state NMR technique offers a complementary characterization approach for the study of kidney stones and related synthetic model systems. The ${}^1\text{H}$ DUMBO MAS NMR technique provides unambiguous identification of the different calcium oxalate hydrate phases. This experiment is a rapid-measurement technique which can be easily adapted to yield semi-quantitative data. For the first time, the natural abundance ${}^{43}\text{Ca}$ MAS NMR data from the three calcium oxalate hydrate phases have been presented together; these data exhibited sufficient signal to noise to facilitate a complete structural interpretation in agreement with crystallographic data. The extension of this approach to the study of KSs was attempted, showing that a real signal could be measured but with relatively limited discrimination between the different KSs samples. The deconvolution of the ${}^1\text{H}$ and ${}^{13}\text{C}$ MAS NMR data into assigned subspectra aided the interpretation of the data describing the whole system, thus demonstrating that KSs materials are usually a complex association of organic and inorganic components. Additional ${}^{31}\text{P}$ MAS NMR studies provided further insight into the composition of the low-level phosphates which are ubiquitous and difficult to characterize in KSs. The development of solid-state NMR, in combination with modern computational DFT and machine learning approaches, would be able to characterize the complex heterogeneous biomaterials such as KSs without ambiguity (Tielens et al., 2021). As part of on-going studies building on the observations here, systematic NMR studies of a large range of KSs from the Tenon Hospital's collection is being undertaken to develop new diagnosis NMR approaches that could impact on developing novel treatments.

Appendix A

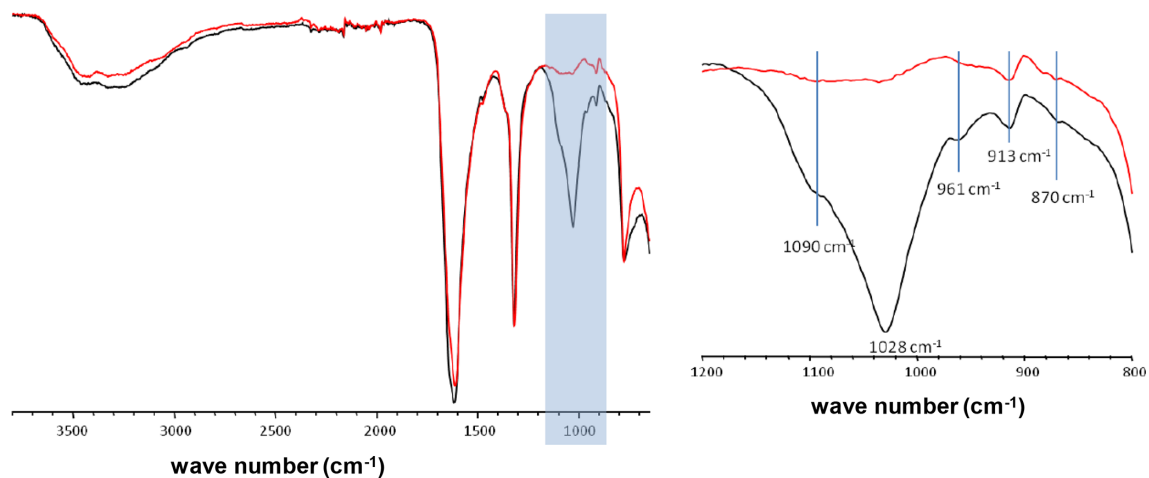


Figure A1. FTIR spectra of two KSSs containing a mixture of COM and COD phases. The main difference lies in the light blue wave number region corresponding to phosphate vibrations (913 , 961 , 1090 cm^{-1} hydroxyapatite; 870 cm^{-1} carbonates).

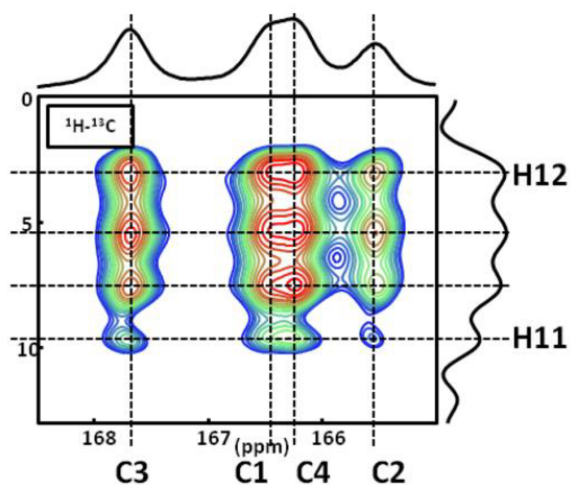


Figure A2. ^1H - ^{13}C CP DNP HETCOR MAS NMR spectrum of COM at $T = 100\text{ K}$. In total, four distinct ^1H resonances are clearly evidenced on the ^1H indirect dimension. The contact time is 9.0 ms , and $16\text{ }^1\text{H}/^{13}\text{C}$ correlations are observed. Note: the temperature used (100 K) has an impact on the values of the ^{13}C chemical shifts. The main goal here is to demonstrate that four ^1H resonances are clearly observed in the indirect dimension.

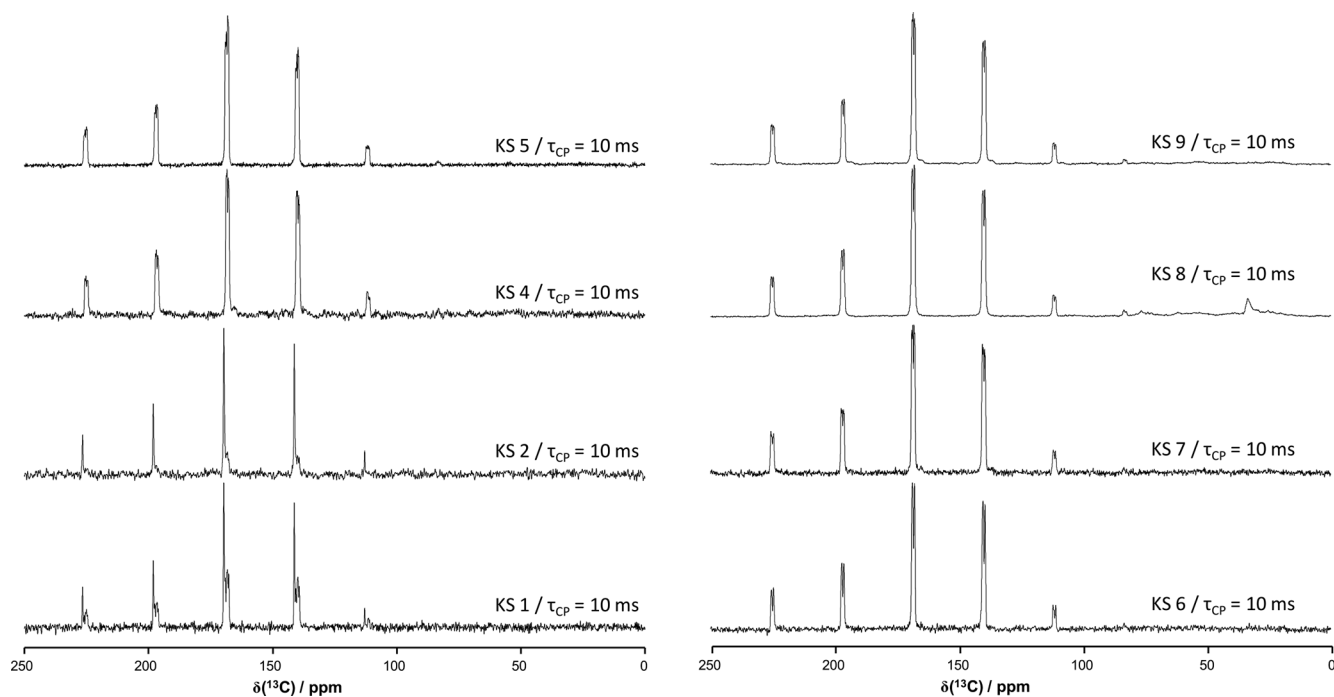


Figure A3. ^{13}C CP MAS NMR spectra of all KSs presented in this work (700 MHz). The contact time in milliseconds is indicated systematically.

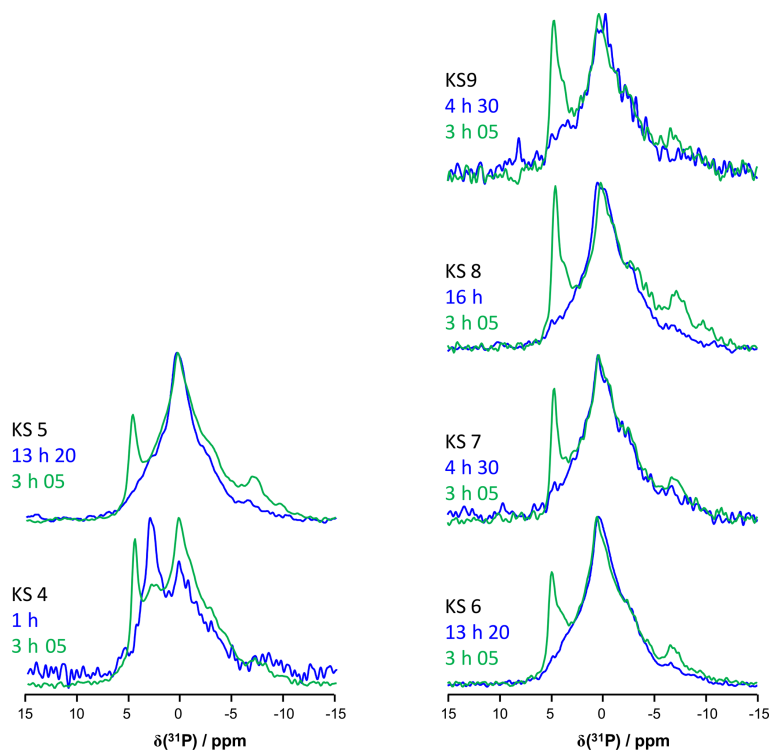


Figure A4. ^{31}P MAS and CP MAS NMR spectra of all KSs presented in this work (700 MHz).

Table A1. All CIFs are available upon request for COM, COD and COT. (a) Selected O–H...O distances and the number of H...O contacts with O–H...O ≤ 3 Å (italic) for COM. The atomic positions were optimized at the DFT level. (b) Selected O–H...O distances and the number of H...O contacts with O–H...O ≤ 3 Å (italic) for COD. The atomic positions were optimized at the DFT level. In order to take into account the distribution of the zeolitic water molecules, a model corresponding to CaC₂O₄ · (2 + 0.375)H₂O was first calculated (see below), i.e., Ca₈C₁₆O₃₂(H₂O)₁₆(H₂O)₃. The less rigid molecules are highlighted in bold. The first four molecules are structural. The last three molecules are zeolitic. (c) Selected O–H...O distances and the number of H...O contacts with O–H...O ≤ 3 Å (bold italic) for COT. The atomic positions were optimized at the DFT level.

(a)																				
H11	O100	1.00849	H12	O100	0.98369	H21	O200	0.99077	H22	O200	0.98971									
H11	H12	1.57350	H12	H11	1.57350	H21	H22	1.60332	H22	H21	1.60332									
H11	O8	1.64743	H12	O5	1.95727	H21	O5	1.75421	H22	O100	1.84259									
H11	C4	2.32231	H12	H22	2.34911	H21	C3	2.41467	H22	H12	2.34911									
H11	H22	2.38986	H12	C3	2.43432	H21	O6	2.59359	H22	H11	2.38986									
H11	O7	2.54004	H12	O1	2.82575	H21	Ca1	2.91456												
H11	Ca2	2.97148	H12	Ca2	2.90392	H21	H12	2.92563												
			H12	H21	2.92563															
			H12	O8	2.97218															
(b)																				
H1	O33	0.98706	H2	O34	0.98980	H3	O34	0.98182	H4	O33	0.99442	H5	O35	0.98170	H6	O36	0.98695	H7	O36	0.98579
H4	H4	1.59565	H2	H3	1.57549	H3	H2	1.57549	H4	H1	1.59565	H5	H8	1.61227	H6	H7	1.58205	H7	H6	1.58205
H1	O26	1.91539	H2	O25	1.82678	H3	O28	2.04985	H4	O27	1.75128	H5	O30	1.85900	H6	O29	1.87561	H7	O32	1.91845
H1	H17	2.11120	H2	H18	2.12287	H3	H19	2.22917	H4	H38	1.97874	H5	H21	2.15627	H6	H22	2.15494	H7	H23	2.15003
H1	H38	2.35789	H2	H37	2.24223	H3	H37	2.66372	H4	H20	2.04373	H5	O14	2.75907	H6	H37	2.31981	H7	H22	2.69686
H1	H20	2.69799	H2	H19	2.67477	H3	H18	2.70041	H4	H17	2.52979	H5	C10	2.81281	H6	H23	2.64503	H7	O16	2.78683
H1	O44	2.73922	H2	H8	2.74763	H3	O12	2.81150	H4	O44	2.63337	H5	H24	2.83299	H6	O42	2.77692	H7	O42	2.79486
H1	O10	2.79429	H2	O9	2.75952	H3	O43	2.84290	H4	C13	2.68644	H5	O41	2.88697	H6	O13	2.79229	H7	H37	2.81901
H1	C16	2.86535	H2	C15	2.77043	H3	H8	2.86354	H4	O11	2.84953	H5	Ca3	2.93317	H6	C9	2.81462	H7	H37	2.81901
H1	Ca1	2.99269	H2	O43	2.77691	H3	C14	2.95471	H4	O51	2.90084	H5	Ca3	2.93317	H6	C9	2.81462	H7	C12	2.85808
			H2	O51	2.78975	H3	Ca2	2.98530	H4	O4	2.93927	H5	Ca3	2.93317	H6	C4	2.92805	H7	Ca4	2.95463
			H2	Ca2	2.93267	H4	Ca1	2.96741												
(c)																				
H8	O35	1.00238	H9	O37	0.98455	H10	O38	0.98386	H11	O38	0.98764	H12	O37	0.98525	H13	O39	0.98603	H14	O40	0.98212
H8	H5	1.61227	H9	H12	1.57848	H10	H11	1.59461	H11	H10	1.59461	H12	H9	1.57848	H13	H16	1.60309	H14	H15	1.57384
H8	O51	1.66198	H9	O18	1.89267	H10	O17	1.85718	H11	O50	1.85667	H12	O19	1.84639	H13	O50	1.83852	H14	O21	2.11357
H8	H38	1.99179	H9	H25	2.14808	H10	H26	2.12211	H11	H36	2.17741	H12	H28	2.07478	H13	H36	2.35234	H14	H30	2.23119
H8	H37	2.04976	H9	H36	2.36458	H10	H33	2.34664	H11	H13	2.40635	H12	H34	2.50717	H13	H11	2.40635	H14	H36	2.65940
H8	H2	2.74763	H9	H28	2.64453	H10	H27	2.65917	H11	H35	2.60426	H12	H25	2.62744	H13	H35	2.56253	H14	H31	2.70447
H8	O15	2.84946	H9	O48	2.77037	H10	O47	2.76488	H11	O20	2.76299	H12	O48	2.71565	H13	O22	2.81506	H14	O5	2.79807
H8	H3	2.86354	H9	O2	2.78591	H10	C7	2.80358	H11	O39	2.81858	H12	O3	2.76892	H13	H29	2.85749	H14	O46	2.83725
H8	H24	2.93412	H9	C8	2.84076	H10	O1	2.88960	H11	O4	2.82251	H12	C5	2.83943	H13	H29	2.85749	H14	O46	2.83725
H8	O31	2.96498	H9	Ca5	2.93707	H10	O39	2.92353	H11	H27	2.85030	H12	Ca5	2.95153	H13	O6	2.93190	H14	O38	2.89969
H8	O34	2.99827	H9	O50	2.98631	H10	Ca6	2.98407												
H15	O40	0.99513	H16	O39	0.98321	H17	O44	0.98418	H18	O43	0.98306	H19	O43	0.98845	H20	O44	0.98141	H21	O41	0.98524
H15	H14	1.57384	H16	H13	1.60309	H17	H20	1.58638	H18	H19	1.58312	H19	H18	1.58312	H20	H17	1.58638	H21	H24	1.59032
H15	O24	1.77827	H16	O23	1.89139	H17	O26	1.88660	H18	O25	1.90254	H19	O28	1.83208	H20	O27	1.97101	H21	O30	1.84549
H15	H31	2.12464	H16	H32	2.16066	H17	H1	2.11120	H18	H2	2.12287	H19	H3	2.22917	H20	H4	2.04373	H21	H5	2.15627
H15	H36	2.19988	H16	H29	2.69091	H17	C16	2.50781	H18	C15	2.52659	H19	C14	2.48695	H20	C13	2.60434	H21	C10	2.45463
H15	H30	2.67389	H16	C3	2.79378	H17	H4	2.52979	H18	H3	2.70041	H19	H2	2.67477	H20	H1	2.69799	H21	O35	2.74039
H15	C4	2.70528	H16	O45	2.80838	H17	O33	2.71797	H18	O34	2.78743	H19	O34	2.82331	H20	O33	2.77138			
H15	O8	2.75027	H16	O7	2.82588	H17	O1	2.96592												
H15	O46	2.77041	H16	H33	2.95661															
H15	O50	2.91170	H16	Ca7	2.98301															

Table A1. Continued.

H22	O42	0.98588	H23	H23	O42	0.98660	H24	H24	O41	0.99754	H25	O48	0.98498	H26	O47	0.98243	H27	O47	0.99450	H28	O48	0.98088	
H22	H23	1.58163	H23	H23	H22	1.58163	H24	H21	H21	1.59032	H25	H28	1.57886	H26	H27	1.58899	H27	H26	1.58899	H28	H25	1.57886	
H22	O29	1.91449	H23	O32	1.87699	H24	H24	O31	1.70417	H25	O18	1.89272	H26	O17	1.88627	H27	O20	1.73992	H28	O19	1.95113		
H22	H6	2.15494	H23	H7	2.15003	H24	H24	C11	2.43596	H25	H9	2.14808	H26	H10	2.12211	H27	O20	2.43921	H28	H12	2.07478		
H22	C9	2.54313	H23	C12	2.50035	H24	H24	H5	2.83299	H25	C8	2.53078	H26	C7	2.49549	H27	H10	2.65917	H28	C5	2.52406		
H22	H7	2.69686	H23	H6	2.64503	H24	H24	O35	2.93124	H25	H12	2.62744	H26	O7	2.69101	H27	O6	2.68011	H28	H9	2.64453		
H22	O36	2.82367	H23	O36	2.79218	H24	H24	H8	2.93412	H25	O8	2.73239	H26	Ca7	2.86542	H27	Ca7	2.83851	H28	O5	2.71256		
			H23	O7	2.97205	H25	H25	O37	2.78268	H26	Ca8	2.87171	H27	O38	2.88787	H27	H11	2.85030	H28	O37	2.74612		
																						2.91374	
H29	O45	0.99748	H30	O46	0.99081	H31	H31	O46	0.98265	H32	O45	0.98460											
H29	H32	1.58925	H30	H31	1.58606	H31	H30	H30	1.58606	H32	H29	1.58925											
H29	O22	1.72144	H30	O21	1.80278	H31	O24	O24	1.92821	H32	O23	1.85294											
H29	C2	2.42196	H30	H14	2.23119	H31	H15	H15	2.12464	H32	H16	2.16066											
H29	O2	2.65935	H30	C1	2.47815	H31	C4	C4	2.55193	H32	C3	2.49151											
H29	H16	2.69091	H30	H15	2.67389	H31	H14	H14	2.70447	H32	O3	2.71237											
H29	Ca5	2.83343	H30	O1	2.71669	H31	O4	O4	2.74962	H32	O39	2.81984											
H29	H13	2.85749	H30	O40	2.85346	H31	O40	O40	2.82082	H32	Ca5	2.85738											
H29	O39	2.87558	H30	Ca6	2.85690	H31	Ca6	Ca6	2.88812														
			H30	O14	2.87981																		
H33	O49	0.97686	H34	O49	0.97560	H35	H35	O50	0.98605	H36	O50	0.97905	H37	H37	O51	0.97973	H38	O51	0.99205				
H33	H34	1.55468	H34	H33	1.55468	H35	H36	H36	1.58568	H36	H35	1.58568	H37	H38	H38	1.55005	H38	H37	1.55005				
H33	H10	2.34664	H34	O19	2.39218	H35	H35	O49	1.84598	H36	O40	2.14165	H37	H8	2.04976	H38	O33	1.77829					
H33	H35	2.58196	H34	H12	2.50717	H35	H34	H34	2.53067	H36	H11	2.17741	H37	O34	2.20072	H38	H4	1.97874					
H33	O38	2.66257	H34	H35	2.53067	H35	H35	H35	2.56253	H36	H15	2.19988	H37	H2	2.24223	H38	H8	1.99179					
H33	O17	2.72932	H34	C5	2.65374	H35	H35	H33	2.58196	H36	H13	2.35234	H37	H6	2.31981	H38	H1	2.35789					
H33	H14	2.94927	H34	C3	2.91240	H35	H35	H11	2.60426	H36	H9	2.36458	H37	O36	2.45695								
H33	H16	2.95661	H34	O3	2.96977					H36	O37	2.61085	H37	H3	2.66372								
H33	C7	2.98511								H36	H14	2.65940	H37	H7	2.81901								
										H36	O38	2.89925											
										H36	H12	2.99920											
(c)	H1	0.98194	H2	O6	1.01013	H3	H3	O7	0.98972	H4	O5	1.00726	H5	O5	0.99237	H6	O7	0.98705					
H1	H2	1.62553	H2	H1	1.62553	H3	H6	H6	1.57438	H4	H5	1.61032	H5	H4	1.61032	H6	H3	1.57438					
H1	O3	1.97834	H2	O1	1.66830	H3	O6	O6	1.83746	H4	O2	1.67978	H5	O3	1.81868	H6	O5	1.95753					
H1	H3	2.09660	H2	H3	2.15532	H3	H1	H1	2.09660	H4	H6	2.08633	H5	H1	2.37604	H6	H4	2.08633					
H1	H5	2.37604	H2	C1	2.61465	H3	H2	H2	2.15532	H4	C1	2.60506	H5	C2	2.54822	H6	H5	2.66412					
H1	C2	2.73894	H2	H4	2.75756	H3	H1	H1	2.82312	H4	H2	2.75756	H5	H6	2.66412	H6	O2	2.80700					
H1	H3	2.82312	H2	O4	2.79380	H3	O3	O3	2.87563	H4	O7	2.83920	H5	O4	2.77186	H6	H4	2.84626					
H1	O7	2.84845	H2	O4	2.96096	H3	O6	O6	2.96615	H4	H6	2.84626	H5	O2	2.84989	H6	O2	2.84626					
H1	O7	2.91450				H3	Ca1	Ca1	2.98521	H4	O7	2.85001	H5	Ca1	2.91831								
H1	H4	2.93242								H4	H1	2.93242											
H1	O5	2.93253								H4	O1	2.99648											
H1	H1	2.95802																					

Data availability. All the data are shown in all the figures of the paper. The CIFs of COM, COD and COT structures are available upon request from the corresponding author.

Author contributions. CL performed all syntheses and recorded most of the NMR spectra in strong collaboration with CB, DL and DI. CG and FT performed all DFT optimizations. FB and LB-C were deeply involved in the interpretation of the NMR spectra, with the help of MES and JVH. MD, EL and DB provided the KS sample and interpreted the data as both physicians and a physical chemist, respectively. CB wrote the article, with the support of the coauthors.

Competing interests. The authors declare that they have no conflict of interest.

Disclaimer. Publisher's note: Copernicus Publications remains neutral with regard to jurisdictional claims in published maps and institutional affiliations.

Special issue statement. This article is part of the special issue "Geoffrey Bodenhausen Festschrift". It is not associated with a conference.

Acknowledgements. DFT calculations were performed using HPC resources from GENCI-IDRIS (grant no. 097535). The UK 850 MHz solid-state NMR facility used in this research was funded by EPSRC and BBSRC (grant no. PR140003) and the University of Warwick, including funding, in part, from the Birmingham Science City Advanced Materials Projects 1 and 2 supported by Advantage West Midlands (AWM) and the European Regional Development Fund (ERDF).

This article is dedicated to Geoffrey Bodenhausen on the occasion of his 70th birthday.

Financial support. This research has been supported by an École Doctorale (ED 397) doctoral fellowship of Sorbonne University.

Review statement. This paper was edited by Perunthiruthy Madhu and reviewed by two anonymous referees.

References

- Bak, M., Thomsen, J. K., Jakobsen, H. J., Petersen, S. E., Petersen, T. E., and Nielsen, N. C.: Solid-state ^{13}C and ^{31}P NMR analysis of urinary stones, *J. Urol.*, 164, 856–863, [https://doi.org/10.1016/S0022-5347\(05\)67327-2](https://doi.org/10.1016/S0022-5347(05)67327-2), 2000.
- Basso, R., Lucchetti, G., Zefiro, L., and Palenzona, A.: Caoxite, $\text{Ca}(\text{H}_2\text{O})_3(\text{C}_2\text{O}_4)$, a new mineral from the Cherchiara mine, northern Apennines, Italy, *Neues Jb. Miner. Monat.*, 2, 84–96, <https://doi.org/10.1127/njmm/1997/1997/84>, 1997.

- Bazin, D., Daudon, M., Combes, C., and Rey, C.: Characterization and some physicochemical aspects of pathological microcalcifications, *Chem. Rev.*, 112, 5092–5120, <https://doi.org/10.1021/cr200068d>, 2012.
- Bazin, D., Haymann, J.-P., and Letavernier, E.: From urolithiasis to pathological calcification: a journey at the interface between physics, chemistry and medicine. A tribute to Michel Daudon, *C.R. Chim.*, 19, 1388, <https://doi.org/10.1016/j.crci.2016.10.001>, 2016.
- Bazin, D., Letavernier, E., Haymann, J.-P., Frochot, V., and Daudon, M.: Crystalline pathologies in the human body: first steps of pathogenesis, *Ann. Biol. Clin.-Paris*, 78, 349–362, <https://doi.org/10.1684/abc.2020.1557>, 2020.
- Bowers, G. M. and Kirkpatrick, R. J.: Natural abundance ^{43}Ca NMR as a tool for exploring calcium biomineralization: renal stone formation and growth, *Cryst. Growth Des.*, 11, 5188–5191, <https://doi.org/10.1021/cg201227f>, 2011.
- Butusov, M. and Jernelöv, A.: Phosphorus in the organic life: cells, tissues, organisms, in: *Phosphorus. SpringerBriefs in Environmental Science*, vol 9., Springer, New York, NY, https://doi.org/10.1007/978-1-4614-6803-5_2, 2013.
- Cavanagh, J., Fairbrother, W. J., Palmer III, A. G., and Skelton, N. J.: *Protein NMR spectroscopy, principles and practice*, 2nd edn., Academic Press, Burlington, MA, USA, <https://doi.org/10.1016/B978-0-12-164491-8.X5000-3>, 2007.
- Colas, H., Bonhomme-Courry, L., Diogo-Coelho, C., Tielsen, F., Babonneau, F., Gervais, C., Bazin, D., Laurencin, D., Smith, M. E., Hanna, J. V., Daudon, M., and Bonhomme, C.: Whewellite, $\text{CaC}_2\text{O}_4 \cdot \text{H}_2\text{O}$: structural study by a combined NMR, crystallography and modelling approach, *CrystEngComm*, 15, 8840–8847, <https://doi.org/10.1039/C3CE41201F>, 2013.
- Daudon, M., Bazin, D., André, G., Jungers, P., Cousson, A., Chevalier, P., Veron, E., and Matzen, G.: Examination of whewellite kidney stones by scanning electron microscopy and powder neutron diffraction techniques, *J. Appl. Cryst.*, 42, 109–115, <https://doi.org/10.1107/S0021889808041277>, 2009.
- Dazem, C. L. F., Amombo Noa, F. M., Nenwa, J., and Öhtström, L.: Natural and synthetic metal oxalates – a topology approach, *CrystEngComm*, 21, 6156–6164, <https://doi.org/10.1039/c9ce01187k>, 2019.
- Deganello, S.: The structure of whewellite, $\text{CaC}_2\text{O}_4 \cdot \text{H}_2\text{O}$ at 328 K, *Acta Crystallogr. B*, 37, 826–829, <https://doi.org/10.1107/S056774088100441X>, 1981.
- Dessombz, A., Coulibaly, G., Kirakoya, B., Ouedraogo, R. W., Lengani, A., Rouzière, S., Weil, R., Picaut, L., Bonhomme, C., Babonneau, F., Bazin, D., and Daudon, M.: Structural elucidation of silica present in kidney stones coming from Burkina Faso, *C.R. Chim.*, 19, 1573–1579, <https://doi.org/10.1016/j.crci.2016.06.012>, 2016.
- Eckert, H., Yesinowski, J. P., Silver, L. A., and Stolper, E. M.: Water in silicate glasses: quantitation and structural studies by proton solid echo and magic angle spinning NMR methods, *J. Phys. Chem.*, 92, 2055–2064, <https://doi.org/10.1021/j100318a070>, 1988.
- Feike, M., Demco, D. E., Graf, R., Gottwald, J., Hafner, S., and Spiess, H. W.: Broadband multiple-quantum NMR spectroscopy, *J. Magn. Reson. A*, 122, 214–221, <https://doi.org/10.1006/jmra.1996.0197>, 1996.

- Gan, Z., Hung, I., Wang, X., Paulino, J., Wu, G., Litvak, I. M., Gor'kov, P. L., Brey, W. W., Lendi, P., Schiano, J. L., Bird, M. D., Dixon, I. R., Toth, J., Boebinger, G. S., and Cross, T. A.: NMR spectroscopy up to 35.2 T using a series-connected hybrid magnet, *J. Magn. Reson.*, 284, 125–136, <https://doi.org/10.1016/j.jmr.2017.08.007>, 2017.
- Gardner, L. J., Walling, S. A., Lawson, S. M., Sun, S., Bernal, S. A., Corkhill, C. L., Provis, J. L., Apperley, D. C., Iuga, D., Hanna, J. V., and Hyatt, N. C.: Characterization of and structural insight into struvite-K, $\text{MgKPO}_4 \cdot 6\text{H}_2\text{O}$, an analogue of struvite, *Inorg. Chem.*, 60, 195–205, <https://doi.org/10.1021/acs.inorgchem.0c02802>, 2021.
- Gay, C., Letavernier, E., Verpont, M.-C., Walls, M., Bazin, D., Daudon, M., Nassif, N., Stéphane, O., and De Frutos, M.: Nanoscale analysis of Randall's plaques by electron energy loss spectromicroscopy: insight in early biomineral formation in human kidney, *ACS Nano*, 14, 1823–1836, <https://doi.org/10.1021/acsnano.9b07664>, 2020.
- Gehl, A., Dietzsch, M., Mondeshki, M., Bach, S., Häger, T., Panthöfer, M., Barton, B., Kolb, U., and Tremel, W.: Anhydrous amorphous calcium oxalate nanoparticles from ionic liquids: stable crystallization intermediates in the formation of whewellite, *Chem. Eur. J.*, 21, 18192–18201, <https://doi.org/10.1002/chem.201502229>, 2015.
- Gervais, C., Laurencin, D., Wong, A., Pourpoint, F., Labram, J., Woodward, B., Howes, A. P., Pike, K. J., Dupree, R., Mauri, F., Bonhomme, C., and Smith, M. E.: New perspectives on calcium environments in inorganic materials containing calcium–oxygen bonds: a combined computational–experimental ^{43}Ca NMR approach, *Chem. Phys. Lett.*, 464, 42–48, <https://doi.org/10.1016/j.cplett.2008.09.004>, 2008.
- Godinot, C., Gaysinski, M., Thomas, O. P., Ferrier-Pagès, C., and Grover, R.: On the use of ^{31}P NMR for the quantification of hydrosoluble phosphorus-containing compounds in coral hosts tissues and cultures zooxanthellae, *Scientific Reports*, 6, 21760, <https://doi.org/10.1038/srep21760>, 2016.
- Gopinath, T. and Veglia, G.: Probing membrane protein ground and conformationally excited states using dipolar- and J-coupling mediated MAS solid state NMR experiments, *Methods*, 148, 115–122, <https://doi.org/10.1016/j.ymeth.2018.07.003>, 2018.
- Heijnen, W., Jellinghaus, W., and Klee, W. E.: Calcium oxalate trihydrate in urinary calculi, *Urol. Res.*, 13, 281–283, <https://doi.org/10.1007/BF00262657>, 1985.
- Huskić, I., Pekov, I. V., Krivovichev, S. V., and Frišćić, T.: Minerals with metal-organic framework structures, *Sci. Adv.*, 2, e1600621, <https://doi.org/10.1126/sciadv.1600621>, 2016.
- Iuga, D., Schäfer, H., Verhagen, R., and Kentgens, A. P. M.: Populations and coherence transfer by double frequency sweeps in half-integer quadrupolar spin systems, *J. Magn. Reson.*, 147, 192–209, <https://doi.org/10.1006/jmre.2000.2192>, 2000.
- Izatulina, A. R., Gurzhiy, V. V., and Franck-Kamenetskaya, O. V.: Weddellite from renal stones: structure refinement and dependence of crystal chemical features on H_2O content, *Am. Mineral.*, 99, 2–7, <https://doi.org/10.2138/am.2014.4536>, 2014.
- Jayalakshmi, K., Sonkar, K., Behari, A., Kapoor, V. K., and Sinha, N.: Solid state ^{13}C NMR analysis of human gallstones from cancer and benign gall bladder diseases, *Solid State Nucl. Mag.*, 36, 60–65, <https://doi.org/10.1016/j.ssnmr.2009.06.001>, 2009.
- Kresse, G. and Furthmüller, J.: Efficiency of *Ab-Initio* total energy calculations for metals and semiconductors using a plane-wave basis set, *Comp. Mater. Sci.*, 6, 15–50, [https://doi.org/10.1016/0927-0256\(96\)00008-0](https://doi.org/10.1016/0927-0256(96)00008-0), 1996.
- Kresse, G. and Hafner, J.: *Ab initio* molecular dynamics for liquid metals, *Phys. Rev. B*, 47, 558(R), <https://doi.org/10.1103/PhysRevB.47.558>, 1993.
- Kresse, G. and Hafner, J.: *Ab initio* molecular-dynamics simulation of the liquid-metal-amorphous-semiconductor transition in germanium, *Phys. Rev. B*, 49, 14251, <https://doi.org/10.1103/PhysRevB.49.14251>, 1994.
- Laurencin, D. and Smith, M. E.: Development of ^{31}P solid state NMR spectroscopy as a probe of local structure in inorganic and molecular materials, *Prog. Nucl. Mag. Res. Sp.*, 68, 1–40, <https://doi.org/10.1016/j.pnmrs.2012.05.001>, 2013.
- Laurencin, D., Li, Y., Duer, M. J., Iuga, D., Gervais, C., and Bonhomme, C.: A ^{31}P NMR perspective on octacalcium phosphate and its hybrid derivatives, *Magn. Reson. Chem.*, 1–14, <https://doi.org/10.1002/mrc.5149>, 2021.
- Laurent, G., Gilles, P.-A., Woelffel, W., Barret-Vivin, V., Gouillart, E., and Bonhomme, C.: Denoising applied to spectroscopies – Part II: Decreasing computation time, *Appl. Spectrosc. Rev.*, 55, 173–196, <https://doi.org/10.1080/05704928.2018.1559851>, 2020.
- Leroy, C.: Oxalates de calcium et hydroxyapatite: des matériaux synthétiques et naturels étudiés par des techniques RMN et DNP, Chapter 1, PhD thesis, Pierre et Marie Curie University, Paris, France, available at: <http://www.theses.fr/19753385X> (last access: 10 December 2020), 2016 (in French).
- Lesage, A., Sakellariou, D., Hediger, S., Eléna, B., Charmont, P., Steuernagel, S., and Emsley, L.: Experimental aspects of proton NMR spectroscopy in solids using phase-modulated homonuclear dipolar decoupling, *J. Magn. Reson.*, 163, 105–113, [https://doi.org/10.1016/s1090-7807\(03\)00104-6](https://doi.org/10.1016/s1090-7807(03)00104-6), 2003.
- Li, Y., Reid, D. G., Bazin, D., Daudon, M., and Duer, M. J.: Solid state NMR of salivary calculi: proline-rich salivary proteins, citrate, polysaccharides, lipids and organic-mineral interactions, *C.R. Chim.*, 19, 1665–1671, <https://doi.org/10.1016/j.crci.2015.07.001>, 2016.
- Matlahov, I. and van der Wel, P. C. A.: Hidden motions and motion-induced invisibility: dynamics-based spectral editing in solid-state NMR, *Methods*, 148, 123–135, <https://doi.org/10.1016/j.ymeth.2018.04.015>, 2018.
- Mroue, K. H., Xu, J., Zhu, P., Morris, M. D., and Ramamoorthy, A.: Selective detection and complete identification of triglycerides in cortical bone by high-resolution ^1H MAS NMR spectroscopy, *Phys. Chem. Chem. Phys.*, 18, 18687–18691, <https://doi.org/10.1039/C6CP03506J>, 2016.
- Paruzzo, F. M. and Emsley, L.: High-resolution ^1H NMR of powdered solids by homonuclear decoupling, *J. Magn. Reson.*, 309, 106598, <https://doi.org/10.1016/j.jmr.2019.106598>, 2019.
- Petit, I., Belletti, G. D., Debroye, T., Llansola-Portoles, M. J., Lucas, I. T., Leroy, C., Bonhomme, C., Bonhomme-Courty, L., Bazin, D., Letavernier, E., Haymann, J.-P., Frochot, V., Babonneau, F., Quaino, P., and Tielens, F.: Vibrational signatures of calcium oxalate polyhydrates, *ChemistrySelect*, 3, 8801–8812, <https://doi.org/10.1002/slct.201801611>, 2018.
- Pourpoint, F., Gervais, C., Bonhomme-Courty, L., Azaïs, T., Coelho, C., Mauri, F., Alonso, B., Babonneau, F., and Bonhomme, C.:

- Calcium phosphates and hydroxyapatite: solid-state NMR experiments and first-principles calculations, *Appl. Magn. Reson.*, 32, 435–457, <https://doi.org/10.1007/s00723-007-0040-1>, 2007.
- Reid, D. G., Jackson, G. J., Duer, M. J., and Rodgers, A. L.: Apatite in kidney stones is a molecular composite with glycosaminoglycans and proteins; evidence from Nuclear Magnetic Resonance spectroscopy, and relevance to Randall's plaque pathogenesis and prophylaxis, *J. Urology*, 185, 725–730, <https://doi.org/10.1016/j.juro.2010.09.075>, 2011.
- Reid, D. G., Duer, M. J., Jackson, G. E., Murray, R. C., Rodgers, A. L., and Shanahan, C. M.: Citrate occurs widely in healthy and pathological apatitic biomineral: mineralized articular cartilage and intimal atherosclerotic plaque and apatitic kidney stones, *Calcified Tissue Int.*, 93, 253–260, <https://doi.org/10.1007/s00223-013-9751-5>, 2013.
- Ren, J., Dimitrov, I., Sherry, A., and Malloy, C.: Composition of adipose tissue and marrow fat by ^1H MR spectroscopy at 7 Tesla, *J. Lipid Res.*, 49, 2055–2062, <https://doi.org/10.1194/jlr.D800010-JLR200>, 2008.
- Ruiz-Agudo, E., Burgos-Cara, A., Ruiz-Agudo, C., Ibanez-Velasco, A., Cölfen, H., and Rodriguez-Navarro, C.: A non-classical view on calcium oxalate precipitation and the role of citrate, *Nat. Commun.*, 8, 768, <https://doi.org/10.1038/s41467-017-00756-5>, 2017.
- Samoson, A.: Qone: Magic Angle Spinning (MAS) Probes, available at: <https://qoneamericas.com/mas-probes-magic-angle-spinning/> (last access: 10 February 2021), 2019.
- Schmidt-Rohr, K. and Spiess, H. W.: *Multidimensional solid-state NMR and polymers*, Acad. Press, Elsevier, <https://doi.org/10.1016/C2009-0-21335-3>, 1994.
- Shepelenko, M., Feldman, Y., Leiserowitz, L., and Kronik, L.: Order and disorder in calcium oxalate monohydrate: insights from first-principles calculations, *Cryst. Growth Des.*, 20, 858–865, <https://doi.org/10.1021/acs.cgd.9b01245>, 2019.
- Sherer, B. A., Chen, L., Kang, M., Shimotake, A. R., Wiener, S. V., Chi, T., Stoller, M. L., and Ho, S. P.: A continuum of mineralization from human renal pyramid to stones on stems, *Acta Biomater.*, 71, 72–85, <https://doi.org/10.1016/j.actbio.2018.01.040>, 2018.
- Smith, M. E.: Recent progress in solid-state nuclear magnetic resonance of half-integer spin low- γ quadrupolar nuclei applied to inorganic materials, *Magn. Reson. Chem.*, 1-44, <https://doi.org/10.1002/mrc.5116>, 2020.
- Steiner, T.: The hydrogen bond in the solid state, *Angew. Chem. Int. Edit.*, 41, 48–76, [https://doi.org/10.1002/1521-3773\(20020104\)41:1<48::AID-ANIE48>3.0.CO;2-U](https://doi.org/10.1002/1521-3773(20020104)41:1<48::AID-ANIE48>3.0.CO;2-U), 2002.
- Tazzoli, V. and Domeneghetti, C.: The crystal structure of whewellite and weddellite: re-examination and comparison, *Am. Mineral.*, 65, 327–334, 1980.
- Tielens, F., Vekeman, J., Bazin, D., and Daudon, M.: Opportunities given by density functional theory in pathological calcifications, *C.R. Chimie*, 24, 1–10, <https://doi.org/10.5802/crchim.78>, 2021.
- Wong, A., Howes, A. P., Dupree, R., and Smith, M. E.: Natural abundance Ca-43 study of calcium-containing organic solids: a model study for Ca-binding biomaterials, *Chem. Phys. Lett.*, 427, 201–205, <https://doi.org/10.1016/j.cplett.2006.06.039>, 2006.