

ESTIMATION OF EFFECT HETEROGENEITY IN RARE EVENTS  
META-ANALYSIS

## ESTIMATION OF EFFECT HETEROGENEITY IN RARE EVENTS META-ANALYSIS

**Abstract**

The paper outlines several approaches for dealing with meta-analyses of count outcome data. These counts are the accumulation of occurred events and these events might be rare, so a special feature of the meta-analysis is dealing with low counts including zero-count studies. Emphasis is put on approaches which are state-of-the-art for count data modelling including mixed log-linear (Poisson) and mixed logistic (binomial) regression as well as nonparametric mixture models for count data of Poisson and binomial type. A simulation study investigates the performance and capability of discrete mixture models in estimating effect heterogeneity. The approaches are exemplified on a meta-analytic case study investigating the acceptance of bibliotherapy.

Key words: Heterogeneity Variance; Count Data Analysis; Nonparametric Mixture Models; Meta-Analysis; Generalised Linear Mixed Models; Rare Events

## 1. Introduction

Meta-analyses are used to analyse and integrate the results of several studies investigating the same research question, providing a less costly and more powerful alternative to a large new single study. For a general introduction into meta-analysis refer to Borenstein et al. (2009) or Schulze et al. (2003), for example, and specifically for psychology see Bonett and Price (2014, 2015). The following meta-analytic setting, tailored for event data, was considered in Böhning et al. (2015), and shall be the focus of this paper. In  $k$  independent studies, counts of events are observed in an intervention and control group. This setting can be described by a random count variable  $Y_{ij}$ . The index  $i$  indicates the study  $i$  for  $i = 1, 2, \dots, k$ , where  $k$  denotes the number of available studies. Also,  $j = 1$  denotes the intervention group and  $j = 0$  the control group.  $Y_{ij}$  represents the number of events in study  $i$  and group  $j$ , whereas  $n_{ij}$  denotes the sample size in study  $i$  and group  $j$ . The latter is considered as non-random and is also called the number at risk.

A conventional two-stage meta-analysis proceeds as follows. In the first stage, an estimate of an effect size such as the relative risk  $\widehat{RR}_i = \frac{Y_{i1}/n_{i1}}{Y_{i0}/n_{i0}}$  or odds ratio  $\widehat{OR}_i = \frac{Y_{i1}/(n_{i1}-Y_{i1})}{Y_{i0}/(n_{i0}-Y_{i0})}$  is computed for each study. Then, in a second stage, these estimates are further analysed, for example by providing a summary measure  $\sum_i w_i \hat{\theta}_i / \sum w_i$  where  $\hat{\theta}_i$  is often taken on the log-scale for the risk or odds ratio. Here, the  $w_i$  are weights and often chosen proportional to the inverse variance of  $\hat{\theta}_i$ , where the latter is the estimated risk ratio or odds ratio. In contrast, we focus here on a one-stage approach which directly models the observed counts. This approach has several benefits, as it allows for the inclusion of zero-count studies which either need to be excluded in the two-stage approach or zeros need to be replaced by a smoothing constant as their effect sizes and associated variances are not defined. Also, it

involves working with more appropriate distributions such as the Poisson or binomial distribution, and avoids normal approximations involved in the two-stage approach.

The meta-analytic one-stage approach is closely connected to multilevel analysis and modelling as studies introduce a natural hierarchical level in the data. As pointed out in Hox et al. (2017), meta-analysis can be viewed as an example of multilevel analysis which is prominently used in the social sciences. In particular, it is a two-level approach where the first level is the sample of studies from the population of all possible studies and the second level is the sample of the study participants. Approaches differ depending on what study-specific information is available. In the conventional approach, it is assumed that only a summary measure such as an odds ratio, relative risk or correlation coefficient is available accompanied by some uncertainty measure. If patient-level data are available, Skrondal and Rabe-Hesketh (2004, 299-307) suggest to model these in a multilevel approach. Riley et al. (2010) point out the value and beneficiaries of individual-participant data meta-analysis. In practice however, the problem remains to obtain access to individual participant data of all retrieved relevant studies. To address the issue that only summary information is available for some studies whereas for others individual participant data are available, Riley et al. (2008) suggests approaches to combine these different types of information. In our setting, we are in between the two extreme scenarios of either having only summary measures for all individual participant data as we have more than a summary measure - there are four cell frequencies which allow various choices of the effect measure - but we are also clearly not in the situation of an individual-patient-data meta-analysis.

In summary, we outline the major novel aspects of the paper in the following:

- Rare events meta-analysis experiences serious drawbacks if conducted following a

conventional pathway. Effect measures such as risk or odds ratio might be undefined, as would be the associated approximate variance estimates, unless continuity corrections are invoked with unclear bias potential. In addition, the within-study normality assumption for the effective measure might be seriously in doubt. Here, it is suggested to use count model approaches such as generalized linear and generalized mixed models, as they have been developed and well-investigated for counts and found to perform considerably well.

- More importantly, finite mixture models are suggested to replace the parametric (normal) random effects distribution. We see this as an important step towards creating a new generation of two-level nonparametric meta-analytic approaches. Here we propose to allow mixing on baseline and, potentially, on the effect parameter itself. In addition, we demonstrate in simulation work that these methods can be used successfully in identifying the underlying risk structure.

The paper is organised as follows. Section 2 contains a case study which introduces the setting and its issues. Section 3 presents the conventional log-linear and logistic modelling adapted for meta-analytic applications, followed by Section 4 which discusses how baseline heterogeneity can be modelled. Section 5 introduces mixed log-linear and logistic regression modelling to cope with effect heterogeneity. Finally, in Section 6, the parametric normal random effects distribution is replaced by a nonparametric random effect which is estimated by means of a discrete mixture model. All models and approaches are illustrated using the case study. Section 7 adds a simulation study which mirrors the case study data in its design and illustrates the capability of mixture models in identifying heterogeneity. The paper ends in Section 8 with a short discussion.

## 2. Case study on bibliotherapy vs. control for acceptability of the intervention

We use meta-analytic data on the acceptability of bibliotherapy compared with control groups in the treatment of children and adolescents with depression and/or anxiety from eight studies to illustrate the application of the risk ratio and odds ratio. These data were provided by Yuan et al. (2018). Here, bibliotherapy or so-called book therapy is a treatment approach to mental health. This method is often used to support several conditions via therapy, because of its ease of use, low cost and greater privacy. The control condition comprises wait-list control, non-treatment control, treatment as usual, and psychological placebo. However, the question arises whether bibliotherapy is in favour for acceptability of treatment plan for a diagnosis of depression and/or anxiety. According to Yuan et al. (2018), acceptability is defined as all-cause discontinuation, i.e., the proportion of patients who discontinued treatment for any reason. According to this definition, high proportions occur when acceptability is low.

Meta-analytic data of bibliotherapy and control conditions for acceptability used in this example are given in Table 1. We can see that in many studies, only a few participants discontinued treatment, compared to the total number of participants. Moreover, the data contain studies with zero events in both arms (double-zero studies). Thus, when we use the traditional inverse variance-weighted average method in meta-analysis for combining the risk ratios and odds ratios, the two double-zero studies will be excluded before the analysis, as is shown by the forest plot in Figure 1. Under homogeneity of the effect size (the associate tests of homogeneity have a  $p$ -value = .14 for the risk ratio and .12 for the odds ratio), the estimated overall risk ratio and overall odds ratio are given by 1.86 and 2.08, respectively. These are obtained with the Mantel-Haenszel estimator which allows zero-containing studies, and of which details are given in the following section. It can therefore be hypothesised that

all-cause discontinuation is observed more often in bibliotherapy than in control conditions, indicating lower acceptability of bibliotherapy in children and adolescents with depression and/or anxiety. This question will now be further investigated in the following sections.

=====

Insert Table 1 about here

=====

=====

Insert Figure 1 about here

=====

### **3. Log-linear and logistic regression models as an extension of the relative risk and odds ratio**

In the following, we look at the relative risk and odds ratio, and how they generalise to log-linear and logistic regression. Details can be found in Jewell (2004), for example.

Conditional upon study  $i$ , the relative risk is modelled using the log-linear model

$$\log E(Y_{ij}) = \log n_{ij} + \alpha_i + \beta_i \times j, \quad (1)$$

where  $j = 0$  represents the control group and  $j = 1$  the intervention group. Hence,

$\exp(\beta_i) = \frac{E(Y_{i1}/n_{i1})}{E(Y_{i0}/n_{i0})}$  represents the risk ratio in study  $i$ , as can be seen by substituting in  $j = 0$

and  $j = 1$  into (1) and taking differences. The log-linear model (1) is often combined with a conditional Poisson assumption, although alternatives and extensions such as the

negative-binomial model are possible (Hilbe 2012). If we replace the expected values by their

observed counterparts we obtain the *empirical* risk ratio  $\frac{Y_{i1}/n_{i1}}{Y_{i0}/n_{i0}}$  for study  $i$ , assuming that  $Y_{i0}$  is positive.

A second measure is the odds ratio. Here, conditional upon study  $i$ , the odds ratio is modelled using the logistic model

$$\log \frac{E(Y_{ij})}{n_{ij} - E(Y_{ij})} = \alpha_i + \beta_i \times j, \quad (2)$$

where  $j = 0$  represents the control group and  $j = 1$  the intervention group. Hence,  $\exp(\beta_i) = \frac{E(Y_{i1})/(n_{i1} - E(Y_{i1}))}{E(Y_{i0})/(n_{i0} - E(Y_{i0}))}$  represents the odds ratio in study  $i$ , as can be seen by substituting in  $j = 0$  and  $j = 1$  into (2) and taking differences. The logistic model (2) is often combined with a conditional binomial assumption. Again, alternatives are possible including the beta-binomial model as suggested in Kuss (2015).

Again, if we replace the expected values by their observed counterparts we find the *empirical* odds ratio  $\frac{Y_{i1}/(n_{i1} - Y_{i1})}{Y_{i0}/(n_{i0} - Y_{i0})}$  for study  $i$ , assuming that  $0 < Y_{ij} < n_{ij}$  holds for all  $i$  and  $j = 0, 1$ .

#### 4. Baseline heterogeneity as fixed or random effects and Mantel-Haenszel estimation

Here, we consider a specific case of models (1) and (2), namely the case of *effect homogeneity*. In other words, we consider that  $\beta_i = \beta$  for all  $i$ . We would still like to keep a specific intercept value  $\alpha_i$ , which is called the *baseline heterogeneity* as it refers to the risk or odds in the control group, which represents the baseline population. Two approaches are possible. In the first approach, a parameter estimate  $\hat{\alpha}_i$  is fitted for each baseline parameter  $\alpha_i$  of study  $i$ . This is sometimes called a *contrast-based* approach. In the second approach,  $\alpha_i$



is assumed to arise from a distribution, often a normal distribution  $\alpha_i \sim N(\alpha, \sigma_\alpha^2)$ . This is called an *arm-based* approach.

We emphasize here the difference between a contrast-based approach and an arm-based approach - which refers largely to the way the intercept is modelled. In an approach where the study factor is ignored, there is high potential for confounding. We illustrate this issue in the discussion with a synthetic example. As there is agreement that the study factor should be adjusted for, the question arises how this can be best accomplished. One opinion is that one should avoid situations where interventions are compared across studies, which can be achieved by entering study as a main effect. The concern here is not whether the main effect parameters of the study factor (baseline parameters) are estimated validly (a Neyman-Scott problem may occur referring to the issue of consistently estimating infinitely many nuisance parameters), the question is whether we can achieve an unconfounded estimate of the effect of interest. Another opinion is that an unconfounded estimate of the effect can be achieved by treating the main effect of study as a random effect (which is considered critically by proponents of the first opinion as interventions are at risk of being compared across studies). We continue here with both approaches and will see that they both lead to identical effect estimates.

=====

Insert Table 2 about here

=====

We also mention here the Mantel-Haenszel approach (Mantel and Haenszel 1959; Jewell, 2004; Greenland and Robbins 1985) which provides effect estimates of  $\theta$  without any need to model the baseline heterogeneity. For the risk ratio, the Mantel-Haenszel estimator is defined

as

$$\widehat{RR}_{\text{MH}} = \frac{\sum_i Y_{i1} n_{i0} / n_i}{\sum_i Y_{i0} n_{i1} / n_i}$$

and for the odds ratio

$$\widehat{OR}_{\text{MH}} = \frac{\sum_i Y_{i1} (n_{i0} - Y_{i0}) / n_i}{\sum_i Y_{i0} (n_{i1} - Y_{i1}) / n_i},$$

where  $n_i = n_{i0} + n_{i1}$ . Note that these Mantel-Haenszel estimators are weighted estimators of the study-specific risk ratios  $\widehat{RR}_i$  and odds ratios  $\widehat{OR}_i$ , respectively, as they can be written in the form  $\widehat{RR}_{\text{MH}} = \sum_i w_i \widehat{RR}_i / \sum_i w_i$  and  $\widehat{OR}_{\text{MH}} = \sum_i w_i \widehat{OR}_i / \sum_i w_i$  using the Mantel-Haenszel weights  $w_i = Y_{i0} n_{i1} / n_i$  for the risk ratio and  $w_i = Y_{i0} (n_{i1} - Y_{i1}) / n_i$  for the odds ratio, respectively, assuming that these weights exist, i.e.,  $0 < Y_{ij} < n_{ij}$  for all  $i$  and  $j = 0, 1$  (Mantel and Haenszel, 1959).

Table 2 shows the performance and model evaluations for the case study data. Note that we have included the values of the *Akaike information criterion* (AIC) and *Bayesian information criterion* (BIC) for each model considered here. The overall message here is that all approaches perform similarly. Estimating log-linear and logistic models with fixed and random intercepts, i.e., without and with baseline heterogeneity, we find that the risk of all-cause discontinuation is significantly increased by a factor of 1.84 for bibliotherapy, and that the odds for all-cause discontinuation are significantly increased by a factor of 2.09 in bibliotherapy. In addition, confidence intervals are fairly similar.

## 5. Effect heterogeneity as mixed effects model

To model effect heterogeneity of the effect measure  $\beta_i$  in the mixed model approach it is assumed that  $\beta_i \sim N(\beta, \tau^2)$ . If there is no heterogeneity, i.e.,  $\tau^2 = 0$ , the overall effect can be summarised as a single value. For this setting and the risk ratio with baseline heterogeneity

modelled as a fixed effect, the likelihood takes the form

$$\prod_i \int_{\beta_i} [Po(y_{i0} | \exp(\log n_{i0} + \alpha_i)) \times Po(y_{i1} | \exp(\log n_{i1} + \alpha_i) + \beta_i)] \phi(\beta_i | \beta, \tau^2) d\beta_i \quad (3)$$

where  $Po(y|\mu) = \exp(-\mu)\mu^y/y!$  is the Poisson density.  $\phi(\beta_i|\beta, \tau^2)$  is the normal density with mean  $\beta$  and variance  $\tau^2$ . Similarly, we obtain for the odds ratio

$$\prod_i \int_{\beta_i} [Bi(y_{i0}|n_{i0}, \text{expit}(\alpha_i)) \times Bi(y_{i1}|n_{i1}, \text{expit}(\alpha_i + \beta_i))] \phi(\beta_i | \beta, \tau^2) d\beta_i \quad (4)$$

where  $\text{expit}(\eta) = \exp(\eta)/(1 + \exp(\eta))$  and  $Bi(y|n, \mu) = \binom{n}{y} \mu^y (1 - \mu)^{n-y}$  is the binomial density. Note that in these likelihoods, the baseline parameters  $\alpha_i$  are treated as unknown but fixed quantities. If we model them as random quantities as well, we obtain the following nested likelihood for the odds ratio in the binomial model

$$\prod_i \int_{\alpha_i} \left\{ \int_{\beta_i} [Bi(y_{i0}|n_{i0}, \text{expit}(\alpha_i)) \times Bi(y_{i1}|n_{i1}, \text{expit}(\alpha_i + \beta_i))] \right. \quad (5)$$

$$\left. \times \phi(\beta_i | \beta, \tau^2) d\beta_i \right\} \phi(\alpha_i | \alpha, \sigma_\alpha^2) d\alpha_i.$$

Likewise, the nested likelihood for the risk ratio in the log-linear model can be obtained as

$$\prod_i \int_{\alpha_i} \left\{ \int_{\beta_i} [Po(y_{i0} | \exp(\log n_{i0} + \alpha_i)) \times Po(y_{i1} | \exp(\log n_{i1} + \alpha_i) + \beta_i)] \right.$$

$$\left. \times \phi(\beta_i | \beta, \tau^2) d\beta_i \right\} \phi(\alpha_i | \alpha, \sigma_\alpha^2) d\alpha_i.$$

A key difference between the fixed and random baseline heterogeneity models is the number of parameters. Whereas the former has  $k + 2$  parameters, the latter has only 4. Note

that in the fixed baseline heterogeneity model the number of parameters grows with the number of studies, whereas the number remains unchanged in the case of the random baseline heterogeneity model.

In Table 3 we see the results of the model fitting for both models. Whereas the effect estimates differ only slightly across the two models, heterogeneity variance estimates show considerable differences. In the fixed baseline heterogeneity model, the variance of the effect heterogeneity estimate is zero.

For comparison, we included in Table 3 the estimates of the standard inverse variance model along with the heterogeneity variance estimate of DerSimonian and Laird (1986), which is based on the two-stage analysis. First, the  $\chi^2$ -statistic

$$Q = \sum_{i=1}^k w_i (\hat{\theta}_i - \bar{\theta})^2$$

is computed, where  $w_i = 1/\sigma_i^2$  and  $\sigma_i^2$  is the estimated variance of the effect measure of interest, here the log-relative risk or log-odds ratio. Furthermore,  $\bar{\theta}$  is the log Mantel-Haenszel summary estimate of the respective measure of interest. Then, the DerSimonian-Laird estimator for  $\tau^2$  is given as

$$\hat{\tau}^2 = \frac{Q - (k - 1)}{\sum_i w_i - (\sum_i w_i^2) / \sum_i w_i}$$

with the understanding that the estimator is truncated to 0 if it becomes negative. The DerSimonian-Laird estimate in Table 3 matches well with the heterogeneity variance estimate under random baseline heterogeneity, and seems a more realistic estimate of the heterogeneity variance.

=====

Insert Table 3 about here

=====

## 6. Nonparametric heterogeneity modelling for the log-linear and logistic model

### 6.1. The log-linear model with heterogeneity

In the following, we lay out how a nonparametric random effects approach can be developed using nonparametric mixture models. Key theoretical results can be found in Lindsay (1995) whereas computational validity of maximum likelihood estimation is provided in Böhning (1982, 1989). An introduction into mixture models is given in Böhning (2000) and applications in psychology are provided in Holling et al. (2012) and Malzahn et al. (2000).

The modelling approach that we are presenting for heterogeneity estimation is detailed as follows. Recall that model (1) is given by:

$$\log E(Y_{ij}) = \alpha_i + \beta_i \times j + \log n_{ij}. \quad (6)$$

Also recall that the log-risk ratio of this model in the  $i$ -th study is given by  $\beta_i$  and corresponds to  $\exp(\beta_i) = RR_i$ . In addition, heterogeneity can now be separated into *baseline* heterogeneity – the variability in the intercept  $\alpha_i$  – and heterogeneity in the effect measure – the variability in the slope  $\beta_i$ . The presence of effect homogeneity is characterised by  $\beta_i = \beta$  for all studies  $i = 1, 2, \dots, k$ . In the previous section, we modelled heterogeneity using a generalised linear mixed model approach which takes  $\alpha_i \sim N(\alpha, \sigma_\alpha^2)$  and  $\beta_i \sim N(\beta, \sigma_\beta^2)$ . Now, instead of assuming a normal (or other parametric) distribution, we leave the distribution of  $(\alpha_i, \beta_i)$  unspecified. From the foundations of nonparametric maximum likelihood estimation, the maximum likelihood estimator maximising the mixture log-likelihood with mixing

distribution  $Q$

$$\ell(Q) = \sum_{i,j} \log \left[ \int p(y_{ij}; \exp(\alpha_i + \beta_i \times j + \log n_{ij})) Q(d\alpha_i, d\beta_i) \right] \quad (7)$$

is always discrete (Lindsay 1982; Lindsay 1995). Here,  $p(y; \lambda) = \exp(-\lambda)\lambda^y/y!$  is the Poisson discrete mass function for  $y = 0, 1, \dots$  and  $\lambda > 0$ . Hence, there is no limitation of generality if we replace (7) by

$$\ell(Q) = \sum_{i,j} \log \left[ \sum_{s=1}^S p(y_{ij}; \exp(\alpha_s + \beta_s \times j + \log n_{ij})) q_s \right]. \quad (8)$$

The log-likelihood (8) is evidently a discrete mixture log-likelihood with weights  $q_1, q_2, \dots, q_S$  being positive and summing up to 1. Unfortunately, it is not known which value for  $S$  should be chosen. This is known as *the number of components problem*. A typical solution is to start with  $S = 1$  and then sequentially increase the number of components by one until no further increase in the log-likelihood is detected. Specifically, for a given value of  $S$ , the log-likelihood (8) is maximised using the EM algorithm (Dempster et al., 1977; McLachlan and Krishnan, 2007). More details on computational and algorithmic approaches for mixture likelihood problems can be found in Böhning (2000).

We will denote the maximum likelihood estimate of the parameters  $\alpha_s, \beta_s$  and  $q_s$  for  $s = 1, 2, \dots, S$  as

$$\hat{Q} = \begin{pmatrix} \hat{\alpha}_1 & \cdots & \hat{\alpha}_S \\ \hat{\beta}_1 & \cdots & \hat{\beta}_S \\ \hat{q}_1 & \cdots & \hat{q}_S \end{pmatrix}.$$

Note that  $\hat{Q}$  is a mixing distribution jointly on the intercept  $\alpha$  and the slope (log-risk ratio)  $\beta$ ,

in other words it is a discrete distribution giving weights  $\hat{q}_s$  to intercept and slope combinations  $(\hat{\alpha}_s, \hat{\beta}_s)$ . Having the maximum likelihood estimate available, we are then able to give a nonparametric estimate of the heterogeneity variance of the log-risk ratio as

$$\hat{\tau}^2 = \sum_{s=1}^S (\hat{\beta}_s - \bar{\beta})^2 \hat{q}_s,$$

where  $\bar{\beta} = \sum_{s=1}^S \hat{q}_s \hat{\beta}_s$ . This variance is of particular interest in meta-analysis as its size indicates the amount of heterogeneity in effect size across studies. Of course, other variances such as the baseline heterogeneity variance in the  $\alpha_s$  can also be considered.

### 6.2. The logistic model with heterogeneity

The basic logistic model takes the form

$$\log \frac{E(Y_{ij})}{n_{ij} - E(Y_{ij})} = \alpha_i + \beta_i \times j, \quad (9)$$

where  $j = 0$  represents the control group and  $j = 1$  the intervention group, and  $\beta_i$  is the log-odds ratio in the  $i$ -th study. The discrete mixture likelihood now becomes

$$\ell(Q) = \sum_{i,j} \log \left[ \sum_{s=1}^S p(y_{ij}; n_{ij}, \text{expit}(\alpha_s + \beta_s \times j)) q_s \right], \quad (10)$$

where  $p(y; n, \theta) = \theta^y (1 - \theta)^{n-y}$  and  $\text{expit}(x) = \exp(x) / [1 + \exp(x)]$  for any real  $x$ .

Table 4 presents the results of the mixture model analysis for the log-linear and the logistic model. We see that the best model (lowest AIC and BIC) is provided by the two-component model with a homogeneous relative risk estimate of  $\exp(0.61) = 1.84$  for the log-linear mixture model, which is not far off the estimate we have for the log-linear model

with baseline heterogeneity and a homogeneous effect given in Table 2. For the logistic mixture model, the preferred model is also a two-component model with a homogeneous odds ratio estimate of  $\exp(0.72) = 2.05$ . Detailed results of the two-component mixture models are given in Table 5.

=====

Insert Table 4 about here

=====

=====

Insert Table 5 about here

=====

### 6.3. Model estimation

All model fitting and analysis was conducted using R (R Core Team, 2020). Mixed models were fitted using the `lme4` package (Bates et al. 2015). For models with both baseline and effect heterogeneity, a warning indicated that convergence could not be obtained with the default settings of the `glmer`-function and thus, the argument `control=glmerControl(optimizer="bobyqa",optCtrl=list(maxfun=2e5))` was added when fitting these models. Mixture models were fitted using the `flexmix` package (Grün & Leisch, 2007; Grün & Leisch, 2008), which uses the EM algorithm to fit finite mixtures of generalized linear regressions. Specifically, we used the function `stepFlexmix`, which fits the model repeatedly for different numbers of classes and returns the maximum likelihood solution for each. For starting values, observations were allocated randomly to the initial classes for each run of the algorithm. This was repeated a number of times to achieve independence of



estimates from starting values. The number of repetitions for this process was set to `nrep = 10`, since model estimation did not improve further for higher numbers of repetitions.

## 7. Simulation study

To assess the performance of nonparametric mixture models for meta-analysis with and without effect heterogeneity, we conducted two simulation studies: One simulation study ~~for~~ <sup>the</sup> in which the selection of simulation parameters was inspired by the example ~~which was~~ <sup>and has been</sup> described in Section 2, and an additional simulation study with a larger number of conditions for which parameter values were varied systematically. The first of these two simulation studies will be described here. The second simulation study is summarised and ~~evaluated~~ <sup>appraised</sup> in the online supplement. The first simulation study was implemented in R (R Core Team, 2020) and run on the computing cluster PALMA II (<https://www.uni-muenster.de/ZIV/Technik/Server/HPC.html>) at the University of Münster. Computations were parallelized using the *doParallel* package (Microsoft Corporation & Steve Weston, 2020).

### 7.1. Data generation

The simulation conditions under which the data were generated were constructed based on the results from the analysis of the example in section 2: specifically, we designed a baseline condition in which observations from  $k = 8$  studies with an average sample size of 60 per study and group were generated from two classes (i.e.,  $S = 2$ ). We decided to include further simulation conditions with either a larger number of studies ( $k = 50$ ) or a larger average sample size per group ( $\bar{n}_{ij} = 600$ ), or both. Each of these four simulation conditions was implemented with heterogeneous effects (i.e.,  $\beta_1 \neq \beta_2$ , conditions 1-4) and with homogeneous

effects (i.e.,  $\beta_1 = \beta_2$ , conditions 5-8). All conditions are summarized in Table 6. The parameter values for  $q_s$ ,  $\alpha_s$  and  $\beta_s$ ,  $s = 1, 2$ , that we used in our simulation were chosen to mirror the estimates obtained from the mixture models estimated for the example (compare to Table 5). For each condition, 5500 replications were generated. The data for each replication were simulated as follows. First, the class  $s$  of each study was sampled from a  $Bin(1, q_1)$  distribution, with  $q_1 = 0.62$ . Second, the sample size  $n_{ij}$  for each group within a study was sampled from a  $Poi(\bar{n}_{ij})$  distribution. Then, two separate data sets were generated: for the first data set, the parameter estimates  $\hat{\alpha}_s$  and  $\hat{\beta}_s$  of the log-linear mixture model were used to generate the observations for each study. For the second data set, observations were generated using the estimates  $\hat{\alpha}_s$  and  $\hat{\beta}_s$  of the logistic mixture model. This was necessary since strict effect homogeneity ( $\beta_1 = \beta_2$ ) could not be obtained simultaneously for the log relative risk and the log odds ratio. By generating separate data sets, we ensured that for the first data set, effect heterogeneity was present for conditions 1-4 and effects were homogeneous for conditions 5-8 in terms of the log relative risk, while for the second data set, this was the case in terms of the log odds ratio. Thus, for conditions 1-4, the values for  $\alpha_s$  and  $\beta_s$  used in the simulation were obtained from their respective estimates from the log-linear mixture model with heterogeneous effects for the first data set, and from the logistic mixture model with heterogeneous effects for the second data set. For conditions 5-8,  $\alpha_s$  and  $\beta_s$  were obtained from their respective estimates from the log-linear mixture model with homogeneous effects for the first data set, and from the logistic mixture model with homogeneous effects for the second data set. Finally, for each data set, the observations for each group within each study were drawn from a  $Bin(n_{ij}, p_{j,s})$  distribution, where  $p_{j,s}$  was determined from  $\alpha_s$  and  $\beta_s$ .

=====

Insert Table 6 about here

=====

### 7.2. Model fitting

For each simulated meta-analysis, log-linear mixture models with and without effect heterogeneity, as well as logistic mixture models with and without effect heterogeneity were fitted with  $S = 1$ ,  $S = 2$  and  $S = 3$  classes, resulting in  $2$  (log-linear/logistic)  $\times 2$  (effect heterogeneity/effect homogeneity)  $\times 3$  (1/2/3 classes) = 12 models. Note, however, that the models with  $S = 1$  with and without effect heterogeneity are identical, thus reducing the number of models to be evaluated to 10. The first data set (see above) was used to estimate the log-linear mixture models, while the second data set was used to fit the logistic mixture models. Just like for the example, the mixture models were fitted with the `flexmix` package using the `stepFlexmix` function with `nrep = 10`.

### 7.3. Performance evaluation

Model performance was evaluated in terms of model selection and parameter estimation. Log-linear and logistic mixture models were evaluated separately. Regarding model selection, the Akaike Information criterion (AIC) and Bayesian Information Criterion (BIC) were used to determine the preferred model, thereby taking into account both model fit and model complexity. The AIC and BIC are widely used criteria for model selection (Burnham & Anderson 2002; Konishi & Kitagawa 2008). Vrieze (2012) compares AIC and BIC in latent variable models and points out that the BIC consistently chooses the true model if it is among the candidate models considered.

Here, we first evaluated how often the model which was specified correctly in terms of

effect heterogeneity and number of classes was preferred by AIC and BIC, respectively. Then, parameter estimation was evaluated in terms of mean, median and standard deviation of  $\hat{\beta}$  and  $\hat{\tau}^2$ .

#### 7.4. Simulation results

Before the simulation results were calculated, we excluded trials in which one of the following warnings had occurred: “glm.fit: fitted probabilities numerically 0 or 1 occurred”, “glm.fit: algorithm did not converge”. A total of 82 simulation trials belonging to the first condition were excluded from the analysis, one trial was excluded in the second condition, 120 trials were excluded in the fifth condition and two trials were excluded in the sixth condition. In the other conditions, no trials were excluded.

Table 9 summarizes the results with regard to model selection. In the second column, the numbers of simulation trials which remained after exclusion are given for each condition. In the third and fourth columns, the relative number of simulation trials is displayed in which the log-linear mixture model which was correctly specified in terms of both the number of classes and effect size heterogeneity (yes/no) was preferred by the AIC and BIC, respectively. The same figures are given for the logistic mixture models in columns five and six. Model selection performance was quite variable for conditions where the true effect was heterogeneous (condition 1-4): for the first and second simulation conditions, the correctly specified model was favoured by the AIC and BIC in an unsatisfactorily low number of simulation trials for both the log-linear and the logistic mixture model. In the third condition, selection performance seems entirely satisfactory only for the logistic model, while in the fourth condition, the correct model was almost always favoured by both fit indices and for both types of mixture models.

Tables 7 and 8 provide information on the relative frequencies of each model being favoured by the AIC and BIC, respectively, per condition and separately for log-linear and logistic mixture models. From these figures, it becomes apparent that both AIC and BIC performed well in selecting the correct number of classes (i.e.,  $S = 2$ ), but often mistakenly favoured a model with homogeneous effects instead of a model with heterogeneous effects. For conditions where the true effect was homogeneous (i.e.,  $\beta_1 = \beta_2$ , conditions 5-8), Table 9 reveals that both AIC and BIC performed satisfactorily. However, the BIC clearly outperformed the AIC, achieving almost perfect selection performance in conditions with a larger number of studies (i.e., conditions 6 and 8).

=====

Insert Table 7 about here

=====

=====

Insert Table 8 about here

=====

Results with respect to the estimation of  $\bar{\beta}$  are given in Table 10 for the log-linear mixture models, and Table 11 for the logistic mixture models: [For each simulation condition, the tables contain the true value of  \$\bar{\beta}\$  along with the mean, median and standard deviation of  \$\hat{\beta}\$  across simulation trials.](#) Please note that for conditions 1-4, a model with a heterogeneous effect and  $S = 2$  would be correctly specified, while for conditions 5-8, a model with a homogeneous effect and  $S = 2$  would be correctly specified. Hence, the sixth column contains the results of the correctly specified model for conditions 1-4, while the fourth column contains the results of the correctly specified model for conditions 5-8.

=====

Insert Table 9 about here

=====

Since the results were similar for the log-linear and logistic mixture models, we will describe them simultaneously. In general,  $\bar{\beta}$  was estimated with a low mean and median bias, in particular by the model which was correctly specified, for all but the first condition. In the first condition, there was a slight positive bias in the estimation of  $\bar{\beta}$ , even for the correctly specified model. However, it should be noted that this condition was particularly challenging since it was characterized by both a low number of studies and a small sample size along with the presence of effect heterogeneity. In conditions where the true effect was heterogeneous, models in which the effect was specified as homogeneous overestimated the true  $\bar{\beta}$  on average. However, in conditions with a truly homogeneous effect, bias in the estimation of  $\bar{\beta}$  was low even if a model with heterogeneous treatment effects was specified. The only exception of this can be found in condition 5, where a model with  $S = 3$  classes and heterogeneous effects on average overestimated  $\bar{\beta}$ . With regard to the standard deviation of  $\hat{\bar{\beta}}$ , reasonably small standard deviations were obtained in conditions with large numbers of studies and large sample sizes (i.e., conditions 4 and 8) for all models considered. In conditions in which either the sample size or the number of studies was small (i.e., conditions 2, 3, 6 and 7), standard deviations were notably larger, but still acceptable for all models. Large standard deviations were obtained in conditions in which both the number of studies and the sample sizes were small (i.e., conditions 1 and 5), in particular for the models with heterogeneous effects.

good

=====

Insert Table 10 about here

=====

=====

Insert Table 11 about here

=====

Finally, Table 12 displays the results with regard to the estimation of  $\tau^2$ . For each condition, the true value of  $\tau^2$  is given along with the mean and median value of  $\hat{\tau}^2$  across simulation trials. When the correct number of classes was specified (i.e.,  $S = 2$ ),  $\tau^2$  was estimated with a low mean and median bias for conditions with a relatively large number of studies ( $k = 50$ ) or a relatively large sample size ( $\bar{n}_{ij} = 600$ ), both when true heterogeneity was present (conditions 2, 3 and 4) as well as when it was absent (conditions 6, 7 and 8). When  $S = 3$  classes were specified, heterogeneity was on average overestimated in the second and sixth conditions despite a large number of studies. In conditions where a low number of studies was combined with a small sample size (conditions 1 and 5), mean bias of  $\hat{\tau}^2$  was particularly large and indicates an overestimation of heterogeneity. The fact that the median bias was smaller suggests that the large mean values of  $\hat{\tau}^2$  were caused by a few outliers. In the respective conditions, we also obtained extremely large standard deviations of  $\hat{\tau}^2$ . In order to examine whether these issues were caused by few extreme outliers or whether they mirrored general problems in the estimation of  $\tau^2$ , we computed several quantiles of the empirical distribution of  $\hat{\tau}^2$ . The results of these computations can be found in the online supplement. In short, we found that for log-linear and logistic models with three components, as many as 10% of all simulation replications yielded unrealistically large values of  $\hat{\tau}^2$  in conditions with small numbers of studies and small sample sizes. In the same conditions, such estimation problems were less pronounced, but still evident for log-linear and logistic models with two

a nutshell

in

under

weinst  
Du  
up to

components. For conditions with small sample sizes, these problems were restricted to models with three components and for all other conditions, they were less evident. However, it should be noted that by unrealistically large values, we refer to values between about 8 and about 2904. Even more conditions tended to be affected by large numbers of simulation replications in which  $\hat{\tau}^2$  was large compared to the true value of  $\tau^2$ .

Siehe Kommentar  
weiter unten

=====

Insert Table 12 about here

=====

## 8. Discussion and conclusions

In this paper, we presented alternatives to conventional two-stage approaches for meta-analysis from the family of generalised linear mixed models and nonparametric mixture models. These alternatives overcome the shortcomings of conventional inverse variance-weighted two-stage models, where studies with zero-counts cannot be included when adding a smoothing constant. In addition, they allow separate modelling of baseline heterogeneity and effect heterogeneity, while the Mantel-Haenszel approach rests on the assumption of homogeneity. In contrast to the log-linear and logit mixed models presented, nonparametric mixture models do not require specification of the random effects distribution. In particular, these models avoid the assumption of a normal random effects distribution, as this assumption cannot be easily investigated. This is also correct for alternative random effect distributions such as the Gamma or the Beta distribution, as these are mainly chosen for mathematical convenience as they allow closed form solutions for the marginal integrals (which is not the case for the normal random effect distribution). The nonparametric approach circumvents this issue entirely.



We return to the issue that consideration of the study level variation can be crucial, and simply pooling the data across studies would have considerable confounding potential. Let us consider the following synthetic example. We generate two types of studies. In study type A, we have a baseline risk of 0.5 with 100 persons at risk in the control group. Ten persons are at risk in the treatment group where the risk is also 0.5, so that the risk ratio is 1. In study type B, we have a baseline risk of 0.1 with 10 persons at risk in the control group. One hundred persons are at risk in the treatment group for which the risk is also 0.1. In both studies the risk ratio is 1, in other words, there is no effect present. We generate 20 studies of type A and 20 of type B, to keep the scenario realistic. Common sense would tell us, independent of whether you favour the arm-based or contrast-based approach, that any decent analysis would come to the conclusion of no effect. The pooled analysis provides a risk ratio of 0.28 with 95% confidence interval (0.25, 0.32), so a clear and significant effect. Including the baseline parameter as a fixed main effect in the Poisson model yields a risk ratio (CI) of 1.01 (0.83, 1.22) and the Mantel-Haenszel estimate is 1.01 (0.83, 1.22), identical to the former up to two decimal places. Including the baseline parameter as a random effect yields a risk ratio of 0.83 (0.67,1.02), also avoiding the strong confounding effect of the unadjusted effect. Of course, the case study was constructed to make this point, by choosing strong baseline risk variation and highly unbalanced intervention and control groups in the studies, which are typical conditions for the occurrence of confounding. Another possibility would be to eliminate the baseline nuisance parameter prior to any further modelling. This approach is laid out in detail in Böhning et al. (2008) for the profile likelihood.

We consider the risk ratio (or odds ratio) in our setting. Although the risk difference has considerable benefits and is indeed statistically easier to treat, it is not without reason that

the statistical (and primarily the clinical) community often favours the risk (odds) ratio. One of the major reasons is that the latter is invariant towards study duration (making the reasonable assumption that duration is identical in intervention and control groups), whereas this is not the case for the risk difference. In other words, the risk (odds) ratio is a relative effect measure whereas the risk difference is an absolute one. Alternative meta-analytic approaches for the risk and odds ratio were laid out by Bonett and Price (2014, 2015). They do this, at least in the way they measure effect, in a similar way as the conventional meta-analytic approaches presented here. This means that for each study the effect measure is calculated before it is further analysed. Here we do not follow this scheme but rather work directly with the accrued counts of cases among those under risk, in the groups to be compared, in other words, we are working with four cell counts per study. We find this the most appropriate approach in situations experiencing high sparsity including the occurrence of zero studies. We quote from the much appreciated work of Alan Agresti (2013: 507):

A challenging situation for meta-analysis is when the outcome of interest has very low probability. Some tables may have empty cells for one or both treatments.

Bonett and Price (2015:395) develop their approach with the help of smoothing constants (1/4 in the case of the RR, 1/2 in the case of the OR), otherwise the effect measures would not be defined for some studies. Now, there is considerable concern on the use of smoothing constants as they might add bias of considerable size. [We refer to the work of Sweeting et al. \(2004\), Bradburn et al. \(2007\), Kuss \(2015\), or Chanf and Hoaglin \(2017\).](#) Indeed, the Mantel-Haenszel estimate for the RR is 1.8831 (identical to the Poisson regression model including study as factor), which is quite different from 1.38 reached with the help of smoothing constants, underlining the concerns of adding smoothing values. We think that

Poisson and Binomial models with their generalizations are the appropriate approach to deal with these situations as the occurrence of zero counts are part of their natural domain, whereas effect estimates per study are not permissible and need special attentions (such as adding pseudo-values). It is of course a cause of concern that standard errors might be too small when using weighted or unweighted mean marginal estimates. For example, the variance of the Mantel-Haenszel estimate is constructed using the formula developed in Greenland and Robbins (1985), which is done under the assumption of homogeneity of effect. This is precisely why we think it is more appropriate to incorporate heterogeneity into the modelling which can be done using mixed Poisson (or Binomial) regression or using nonparametric mixture models as suggested here.

Potential applications of the models presented could be meta-analyses of randomised controlled trials (RCTs) comparing a psychological intervention with control conditions with outcomes such as complete recovery, remission, response, dropout rates, acceptability or adverse events. For such meta-analyses, it can be beneficial to separately model baseline heterogeneity and effect heterogeneity: RCTs differ in their types of control conditions (see, for example, the case study presented above), which makes it reasonable to expect heterogeneity in the baseline population. Also, although inclusion criteria for the treatment condition are often more narrowly defined, there are still various methodological aspects which can differ across studies, such as treatment duration and intensity, treatment material, and whether patients with comorbidities were included or not, which potentially introduces effect heterogeneity. Both generalised linear mixed models and nonparametric mixture models allow for such heterogeneity to be accounted for.

Both generalised linear mixed models and nonparametric mixture models can easily be

fitted using common statistical software such as R (R Core Team, 2017). While software packages for generalised linear mixed models are commonly used in psychology (e.g., lme4), software packages for nonparametric mixture models (such as the flexmix package) do not enjoy a similar degree of popularity. Also, there is a lack of simulation studies comparing nonparametric mixture models to generalised linear mixed models. The latter were found to perform well in various simulation studies and for different meta-analytic settings (Beisemann et al., 2020; Jackson et al., 2017). The results obtained for the case study included in this paper clearly indicate that such an investigation would be valuable.

In conclusion, we encourage utilising the flexibility of generalised linear mixed models and nonparametric mixture models in rare events meta-analyses both when conducting a meta-analysis as well as in future research on meta-analytical models.

**XXX** ES WÄRE ZU ÜBERLEGEN,  
OB MAN (Aber nicht noch einen  
zusätzliche kommentare einfügt!  
" THE OCCURRENCE OF LARGE INFLUEN-  
TIAL VALUES MIGHT LEAD TO CONSIDER-  
BOOTSTRAP APPROACHES WHERE,  
INSTEAD OF THE MEAN, THE MEDIAN  
IS CALCULATED. LIKEWISE, INSTEAD  
OF THE VARIANCE (MEAN SQUARED  
DEVIATIONS) THE MEDIAN SQUARED  
DEVIATION IS CONSIDERED WHERE  
THE MEAN WITHIN THE SQUARE

### References

- Agresti, A. (2013). *Categorical Data Analysis. third Ed.*. Chichester: John Wiley & Sons.
- Ackerson, J., Scogin, F., McKendree-Smith, N. and Lyman R.D. (1998). Cognitive bibliotherapy for mild and moderate adolescent depressive symptomatology. *Journal of Consulting and Clinical Psychology, 66*, 685–690.
- Bates, D., Maechler, M., Bolker, B., & Walker, S. (2015). Fitting Linear Mixed-Effects Models Using lme4. *Journal of Statistical Software, 67*(1), 1–48. doi:10.18637/jss.v067.i01.
- Beisemann, M., Doebler, P., & Holling, H. (2020). Comparison of random effects meta-analysis models for the relative risk in the case of rare events: A simulation study. *Biometrical Journal, 2020*, 1–34.
- Bonett, D.G., & Price, R.M. (2014). Meta-analysis methods for risk differences. *British Journal of Mathematical and Statistical Psychology, 67*, 371–387.
- Bonett, D.G., & Price, R.M. (2015). Varying coefficient meta-analysis methods for odds ratios and risk ratios. *Psychological Methods, 20*, 394–406.
- Böhning, D. (1982). Convergence of Simars algorithm for finding the MLE of a compound Poisson process. *Annals of Statistics, 10*, 1006–1008.
- Böhning, D. (1989). Likelihood inference for mixtures: geometrical and other constructions of monotone step-length algorithms. *Biometrika, 76*, 375–383.
- Böhning, D. (2000). *Computer-Assisted Analysis of Mixtures and Applications. Meta-Analysis, Disease Mapping and Others*. Boca Raton: Chapman & Hall/CRC.
- Böhning, D., Kuhnert, R., & Rattanasiri, S. (2008). *Meta-Analysis of Binary Data using Profile Likelihood*. Boca Raton: Chapman & Hall/CRC.

- Böhning, D., Mylona, K., & Kimber, A. (2015). Meta-analysis of clinical trials with rare events. *Biometrical Journal*, *57*, 633–648.
- Borenstein, M., Hedges, L.V., Higgins, J.P.T., & Rothstein, H.R. (2009). *Introduction to Meta-Analysis*. Chichester: John Wiley & Sons.
- Bradburn, M.J., Deeks, J.J., Berlin, J.A., & Localio, A. R. (2007). *Statistics in Medicine*, **26**, 53–77.
- Burnham, K.P. & Anderson, D.R. (2002). *Model Selection and Multimodel Inference: A Practical Information-Theoretic Approach*, 2nd ed., Heidelberg-New York: Springer.
- Chang, B.H. & Hoaglin, D.C. (2017). Meta-analysis of odds ratios: current good practices. *Med Care*, **55**, 328–335.
- Cobham, V.E. (2012). Do anxiety-disordered children need to come into the clinic for efficacious treatment?. *Journal of Consulting and Clinical Psychology*, *80*, 456–476.
- Dempster, A.P., Laird, N.M., & Rubin, D.B. (1977). Maximum likelihood from incomplete data via the EM algorithm. *Journal of the Royal Statistical Society. Series B (Methodological)*, *39*, 1–38.
- DerSimonian, R., & Laird, N. (1986). Meta-analysis in clinical trials. *Controlled Clinical Trials*, *7*, 177–188.
- Greenland, S., & Robbins, J.M. (1985). Estimation of a common effect parameter from sparse follow-up data. *Biometrics*, *41*, 55–68.
- Grün, B., & Leisch, F. (2007). Fitting finite mixtures of generalized linear regressions in R. *Computational Statistics & Data Analysis*, *51*, 5247–5252. doi:10.1016/j.csda.2006.08.014

- Grün, B., & Leisch, F. (2008). FlexMix Version 2: Finite mixtures with concomitant variables and varying and constant parameters *Journal of Statistical Software*, *28*, 1-35.  
doi:10.18637/jss.v028.i04
- Hilbe, J.M. (2012). *Negative Binomial Regression, 2nd Ed.* Cambridge: University Press.
- Holling, H., Böhning, W., & Böhning, D. (2012). Likelihood based clustering of meta-analytic SROC curves. *Psychometrika*, *77*, 106–126.
- Hox, J.J., Moerbeek, M., & van de Schoot, R. (2017). *Multilevel Analysis. Techniques and Applications. Third Edition.* Taylor & Francis: Abingdon.
- Jackson, D., Law, M., Stijnen, T., Viechtbauer, W., & White, I.R. (2017). A comparison of seven random-effects models for meta-analyses that estimate the summary odds ratio. *Statistics in Medicine*, *37*, 1059 – 1085.
- Jacob, J., & De Guzman, R.G. (2016). Effectiveness of taking in the good based-bibliotherapy intervention program among depressed Filipino female adolescents. *Asian Journal of Psychiatry*, *23*, 99–107.
- Jewell, N.P. (2004). *Statistics for Epidemiology.* Boca Raton: CRC Press.
- Konishi, S. & Kitagawa, G. (2008). *Information Criteria and Statistical Modeling.* Heidelberg-New York: Springer.
- Kuss, O. (2015). Statistical methods for meta-analyses including information from studies without any events - add nothing to nothing and succeed nevertheless. *Statistics in Medicine*, *34*, 1097–1116
- Lindsay, B.G. (1983). The geometry of mixture likelihoods: a general theory. *Annals of Statistics*, *11*, 86–94.

- Lindsay, B.G. (1995). *Mixture Models: Theory, Geometry and Applications*. NSF-CBMS Regional Conference Series in Probability and Statistics. Hayward: Institute of Mathematical Statistics.
- Lyneham, H.J., & Rapee, R.M. (2006). Evaluation of therapist-supported parent-implemented CBT for anxiety disorders in rural children. *Behaviour Research and Therapy*, 9, 1287–1300.
- Malzahn, U., Böhning, D., & Holling, H. (2000). Nonparametric estimation of heterogeneity variance for the standardised difference used in meta-analysis. *Biometrika*, 87, 619–632.
- Mantel, N., & Haenszel, W. (1959). Statistical aspects of the analysis of data from retrospective studies of disease. *Journal of the National Cancer Institute*, 22, 719–748.
- McLachlan, G.J., & Krishnan, T. (2007). *The EM Algorithm and Extensions*. New Jersey: John Wiley & Sons.
- Microsoft Corporation, & Steve Weston (2020). *doParallel: for each Parallel Adaptor for the 'parallel' Package*. R package version 1.0.16.  
<https://CRAN.R-project.org/package=doParallel>.
- R Core Team (2020). R: A language and environment for statistical computing. R Foundation for Statistical Computing, Vienna, Austria. URL <https://www.R-project.org/>.
- Rapee, R.M., Abbott, M.J., & Lyneham, H.J. (2006). Bibliotherapy for children with anxiety disorders using written materials for parents: a randomized controlled trial. *Journal of Consulting and Clinical Psychology*, 74, 436–444.
- Riley, R.D., Lambert, P.C., & Abo-Zaid, G. (2010). Meta-analysis of individual participant data: rationale, conduct, and reporting. *BMJ*, 340:c221.



- Riley, R.D., Lambert, P.C., Staessen, J.A., Wang, J., Gueyffier, F., Thijs, L., & Bouillon-Buiron, F. (2008). Meta-analysis of continuous outcomes combining individual patient data and aggregate data. *Statistics in Medicine*, *27*, 1870-1893.
- Rohde, P., Stice, E., Shaw, H., & Gau, J.M. (2015). Effectiveness trial of an indicated cognitive-behavioral group adolescent depression prevention program versus bibliotherapy and brochure control at 1- and 2-year follow-up. *Journal of Consulting and Clinical Psychology*, *83*, 736–747.
- Schulze, R., Holling, H., & Böhning, D. (2003). *Meta-analysis: New Developments and Applications in Medical and Social Sciences*. Göttingen: Hogrefe & Huber.
- Skrondal, A., & Rabe-Hesketh, S. (2004). *Generalized Latent Variable Modeling. Multilevel, Longitudinal, and Structural Equation Models*. Chapman&Hall/CRC, Boca Raton.
- Stice, E., Rohde, P., Gau, J.M., & Wade, E. (2010). Efficacy trial of a brief cognitive-behavioral depression prevention program for high-risk adolescents: effects at 1- and 2-year follow-up. *Journal of Consulting and Clinical Psychology*, *78*, 856–867.  
doi:10.1037/a0012645
- Sweeting, M.J., Sutton, A.J., & Lambert, P.C. (2004). What to add to nothing? Use and avoidance of continuity corrections in meta-analysis of sparse data. *Statistics in Medicine*, **23**, 1351–1375.
- Thirlwall, K., Cooper, P.J., Karalus, J., Voysey, M., Willetts, L., & Creswell, C. (2013). Treatment of child anxiety disorders via guided parent-delivered cognitive-behavioural therapy: randomised controlled trial. *British Journal of Psychiatry*, *203*, 436–444.
- Vrieze, S.I. (2012). Model selection and psychological theory: a discussion of the differences

between the Akaike Information Criterion (AIC) and the Bayesian Information Criterion (BIC). *Psychological Methods*, **17**, 228-243.

Yuan, S., Zhou, X., Zhang, Y., Zhang, H., Pu, J., Yang, L., Liu, L., Jiang, X., & Xie, P. (2018). Comparative efficacy and acceptability of bibliotherapy for depression and anxiety disorders in children and adolescents: a meta-analysis of randomized clinical trials. *Neuropsychiatric Disease and Treatment*, *14*, 353–365.

**Figures**

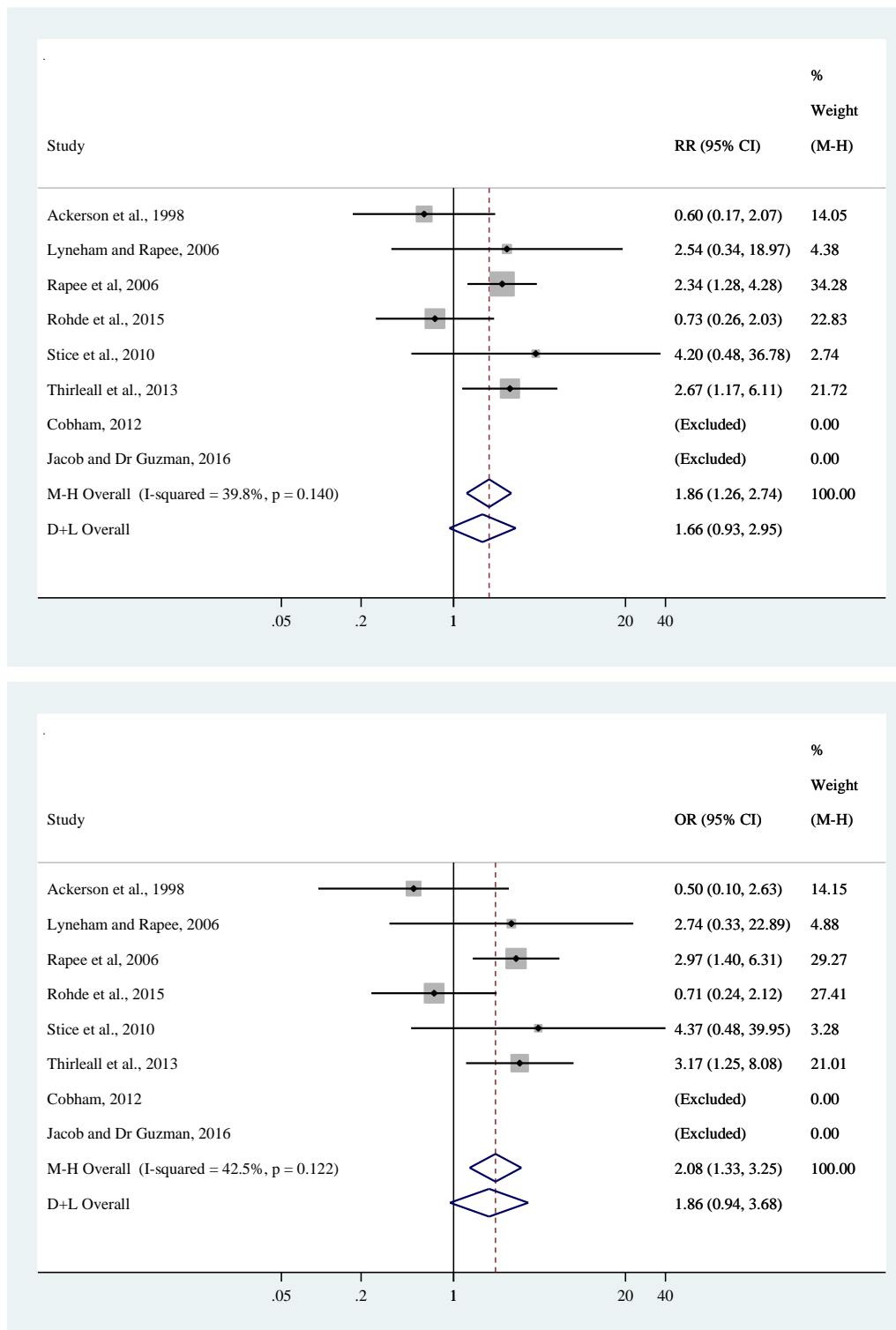


FIGURE 1.

Forest plots of bibliotherapy and control conditions for acceptability, risk ratio (upper panel) and odds ratio (lower panel) are reported.

**Tables**

TABLE 1.

Meta-analytic data on bibliotherapy and control conditions for acceptability

study, year	bibliotherapy		control	
	events	total	events	total
Ackerson <i>et al.</i> , 1998	3	15	5	15
Cobham, 2012	0	20	0	12
Jacob and De Guzman, 2016	0	15	0	15
Lyneham and Rapee, 2006	9	78	1	22
Rapee <i>et al.</i> , 2006	29	90	12	87
Rohde <i>et al.</i> , 2015	6	128	8	124
Stice <i>et al.</i> , 2010	4	80	1	84
Thirleall <i>et al.</i> , 2013	29	125	6	69

TABLE 2.

Effect estimates under fixed and random baseline heterogeneity as well as Mantel-Haenszel estimation (MHE)

Model	log-linear model			logistic model		
	AIC	BIC	$\widehat{RR}$ , 95% CI	AIC	BIC	$\widehat{OR}$ , 95% CI
Fixed	69.22	76.18	1.84 [1.22, 2.77]	68.90	75.85	2.09 [1.33, 3.27]
Random	84.43	86.75	1.84 [1.23, 2.76]	84.77	87.08	2.08 [1.33, 3.23]
MHE			1.86 [1.26, 2.74]			2.08 [1.33, 3.25]

TABLE 3.

Effect estimates under fixed and random baseline heterogeneity with effect heterogeneity modelled by a normal distribution  $\beta_i \sim N(\beta, \tau^2)$  as well as the Inverse Variance model (IV); DL stands for the Dersimonian-Laird estimate of the heterogeneity variance

Model	log-linear model				logistic model			
	AIC	BIC	$\widehat{RR}$ , 95% CI	$\hat{\tau}^2$ , 95% CI	AIC	BIC	$\widehat{OR}$ , 95% CI	$\hat{\tau}^2$ , 95% CI
Fixed	71.22	78.95	1.84 [1.22, 2.77]	0.00 [0, 0.43]	70.90	78.63	2.09 [1.33, 3.27]	0.00 [0, 0.59]
Random	86.29	89.38	1.73 [1.00, 3.00]	0.07 [0, 1.10]	86.06	89.15	1.83 [0.97, 3.45]	0.17 [0, 1.33]
IV DL			1.66 [1.01, 2.71]	0.09 [0, 1.55]			1.83 [1.02, 3.31]	0.16 [0, 2.11]

TABLE 4.

Likelihoods, AIC and BIC, mean and variance of the mixing distribution for the fitted mixture models in the example

Model	S	Log-likelihood	AIC	BIC	$\hat{\beta}$	$\hat{\tau}^2$
Log-linear with effect heterogeneity	1	-57.70	119.30	120.90	0.63	0.00
	2	-37.30	84.50	88.40	0.51	0.02
	3	-36.50	88.90	95.10	0.73	0.22
Log-linear without effect heterogeneity	1	-57.70	119.30	120.90	0.63	0.00
	2	-37.40	82.80	85.90	0.61	0.00
	3	-37.10	86.20	90.90	0.60	0.00
Logistic with effect heterogeneity	1	-61.70	127.50	129.00	0.71	0.00
	2	-37.50	84.90	88.80	0.59	0.04
	3	-36.60	89.10	95.30	0.81	0.23
Logistic without effect heterogeneity	1	-61.70	127.50	129.00	0.71	0.00
	2	-37.80	83.60	86.70	0.72	0.00
	3	-37.40	86.90	91.50	0.71	0.00



TABLE 5.

Parameter estimates of weights, intercepts and slopes in the two classes mixture model

Model	Class $s$	$\hat{q}_s$	$\hat{\alpha}_s$	$\hat{\beta}_s$
Log-linear with effect heterogeneity	1	0.62	-3.24	0.41
	2	0.38	-2.01	0.68
Log-linear without effect heterogeneity	1	0.62	-3.37	0.61
	2	0.38	-1.96	0.61
Logistic with effect heterogeneity	1	0.62	-3.21	0.44
	2	0.38	-1.86	0.84
Logistic without effect heterogeneity	1	0.62	-3.40	0.72
	2	0.38	-1.78	0.72

TABLE 6.  
Conditions used in the design of the simulation

condition	homogeneous ( $\beta_1 = \beta_2$ )	$k$	$\bar{n}_{ij}$	data set	$\alpha_1$	$\alpha_2$	$\beta_1$	$\beta_2$
1	no	8	60	1	-3.24	-2.01	0.41	0.68
2	no	50	60	1	-3.24	-2.01	0.41	0.68
3	no	8	600	1	-3.24	-2.01	0.41	0.68
4	no	50	600	1	-3.24	-2.01	0.41	0.68
5	yes	8	60	1	-3.37	-1.96	0.61	0.61
6	yes	50	60	1	-3.37	-1.96	0.61	0.61
7	yes	8	600	1	-3.37	-1.96	0.61	0.61
8	yes	50	600	1	-3.37	-1.96	0.61	0.61
1	no	8	60	2	-3.21	-1.86	0.44	0.84
2	no	50	60	2	-3.21	-1.86	0.44	0.84
3	no	8	600	2	-3.21	-1.86	0.44	0.84
4	no	50	600	2	-3.21	-1.86	0.44	0.84
5	yes	8	60	2	-3.40	-1.78	0.72	0.72
6	yes	50	60	2	-3.40	-1.78	0.72	0.72
7	yes	8	600	2	-3.40	-1.78	0.72	0.72
8	yes	50	600	2	-3.40	-1.78	0.72	0.72

TABLE 7.  
Relative frequencies of models being favored by AIC or BIC for log-linear mixture models

conditions	effect: criterion	homogeneous			heterogeneous	
		$S = 1$	$S = 2$	$S = 3$	$S = 2$	$S = 3$
1	AIC	0.03	0.74	0.01	0.21	0.01
	BIC	0.03	0.82	0.01	0.14	0.00
2	AIC	0.00	0.46	0.01	0.50	0.02
	BIC	0.00	0.76	0.00	0.24	0.00
3	AIC	0.02	0.33	0.01	0.63	0.02
	BIC	0.02	0.43	0.00	0.54	0.01
4	AIC	0.00	0.00	0.00	0.97	0.03
	BIC	0.00	0.01	0.00	0.99	0.00
5	AIC	0.03	0.81	0.01	0.14	0.01
	BIC	0.03	0.87	0.01	0.09	0.00
6	AIC	0.00	0.83	0.01	0.14	0.02
	BIC	0.00	0.97	0.00	0.03	0.00
7	AIC	0.02	0.83	0.01	0.13	0.01
	BIC	0.02	0.89	0.01	0.08	0.00
8	AIC	0.00	0.84	0.01	0.14	0.01
	BIC	0.00	0.98	0.00	0.02	0.00

TABLE 8.  
Relative frequencies of models being favored by AIC or BIC for logistic mixture models

conditions	effect: criterion	homogeneous			heterogeneous	
		$S = 1$	$S = 2$	$S = 3$	$S = 2$	$S = 3$
1	AIC	0.02	0.67	0.02	0.26	0.03
	BIC	0.02	0.77	0.01	0.19	0.01
2	AIC	0.00	0.24	0.02	0.66	0.08
	BIC	0.00	0.53	0.00	0.46	0.00
3	AIC	0.02	0.14	0.00	0.81	0.03
	BIC	0.02	0.20	0.00	0.77	0.01
4	AIC	0.00	0.00	0.00	0.94	0.06
	BIC	0.00	0.00	0.00	1.00	0.00
5	AIC	0.02	0.79	0.03	0.14	0.02
	BIC	0.02	0.87	0.01	0.09	0.01
6	AIC	0.00	0.77	0.04	0.15	0.04
	BIC	0.00	0.97	0.00	0.03	0.00
7	AIC	0.02	0.80	0.02	0.14	0.02
	BIC	0.02	0.88	0.01	0.09	0.01
8	AIC	0.00	0.79	0.03	0.14	0.03
	BIC	0.00	0.97	0.00	0.03	0.00

TABLE 9.  
Proportions of correct model selection

Condition	No. trials	log-linear		logistic	
		AIC	BIC	AIC	BIC
1	5418	0.21	0.14	0.26	0.19
2	5499	0.50	0.24	0.66	0.46
3	5500	0.63	0.54	0.81	0.77
4	5500	0.97	0.99	0.94	1.00
5	5380	0.81	0.87	0.79	0.87
6	5498	0.83	0.97	0.77	0.97
7	5500	0.83	0.89	0.80	0.88
8	5500	0.84	0.98	0.79	0.97

TABLE 10.  
Log-linear mixture model: estimation of  $\bar{\beta}$

effect: condition	value	homogeneous			heterogeneous	
		$S = 1$	$S = 2$	$S = 3$	$S = 2$	$S = 3$
1 (true $\bar{\beta} = 0.51$ )	Mean $\hat{\beta}$	0.60	0.60	0.60	0.53	0.72
	Median $\hat{\beta}$	0.60	0.60	0.60	0.53	0.56
	SD $\hat{\beta}$	0.21	0.21	0.21	0.40	1.39
2 (true $\bar{\beta} = 0.51$ )	Mean $\hat{\beta}$	0.60	0.60	0.60	0.51	0.53
	Median $\hat{\beta}$	0.60	0.60	0.60	0.51	0.52
	SD $\hat{\beta}$	0.08	0.08	0.08	0.10	0.16
3 (true $\bar{\beta} = 0.51$ )	Mean $\hat{\beta}$	0.59	0.59	0.59	0.51	0.51
	Median $\hat{\beta}$	0.60	0.60	0.60	0.52	0.52
	SD $\hat{\beta}$	0.08	0.08	0.08	0.09	0.09
4 (true $\bar{\beta} = 0.51$ )	Mean $\hat{\beta}$	0.60	0.60	0.60	0.51	0.51
	Median $\hat{\beta}$	0.60	0.60	0.60	0.51	0.51
	SD $\hat{\beta}$	0.03	0.03	0.03	0.04	0.04
5 (true $\bar{\beta} = 0.61$ )	Mean $\hat{\beta}$	0.62	0.62	0.62	0.65	0.91
	Median $\hat{\beta}$	0.61	0.61	0.61	0.62	0.66
	SD $\hat{\beta}$	0.21	0.20	0.20	0.46	1.54
6 (true $\bar{\beta} = 0.61$ )	Mean $\hat{\beta}$	0.61	0.61	0.61	0.61	0.64
	Median $\hat{\beta}$	0.61	0.61	0.61	0.61	0.62
	SD $\hat{\beta}$	0.08	0.08	0.08	0.10	0.18
7 (true $\bar{\beta} = 0.61$ )	Mean $\hat{\beta}$	0.61	0.61	0.61	0.61	0.61
	Median $\hat{\beta}$	0.61	0.61	0.61	0.61	0.61
	SD $\hat{\beta}$	0.07	0.06	0.06	0.08	0.08
8 (true $\bar{\beta} = 0.61$ )	Mean $\hat{\beta}$	0.61	0.61	0.61	0.61	0.61
	Median $\hat{\beta}$	0.61	0.61	0.61	0.61	0.61
	SD $\hat{\beta}$	0.03	0.02	0.02	0.03	0.03

TABLE 11.  
Logistic mixture model: estimation of  $\bar{\beta}$

effect:		homogeneous			heterogeneous	
Condition	Value	$S = 1$	$S = 2$	$S = 3$	$S = 2$	$S = 3$
1 (true $\bar{\beta} = 0.59$ )	Mean $\hat{\beta}$	0.66	0.70	0.70	0.60	0.72
	Median $\hat{\beta}$	0.67	0.71	0.71	0.60	0.63
	SD $\hat{\beta}$	0.24	0.25	0.25	0.29	1.21
2 (true $\bar{\beta} = 0.59$ )	Mean $\hat{\beta}$	0.67	0.71	0.71	0.59	0.62
	Median $\hat{\beta}$	0.67	0.71	0.71	0.59	0.60
	SD $\hat{\beta}$	0.09	0.09	0.09	0.11	0.18
3 (true $\bar{\beta} = 0.59$ )	Mean $\hat{\beta}$	0.66	0.69	0.69	0.59	0.59
	Median $\hat{\beta}$	0.67	0.70	0.70	0.59	0.60
	SD $\hat{\beta}$	0.10	0.10	0.10	0.11	0.11
4 (true $\bar{\beta} = 0.59$ )	Mean $\hat{\beta}$	0.67	0.71	0.71	0.59	0.59
	Median $\hat{\beta}$	0.67	0.71	0.71	0.59	0.59
	SD $\hat{\beta}$	0.04	0.04	0.04	0.04	0.04
5 (true $\bar{\beta} = 0.72$ )	Mean $\hat{\beta}$	0.69	0.72	0.73	0.74	0.96
	Median $\hat{\beta}$	0.69	0.72	0.72	0.73	0.77
	SD $\hat{\beta}$	0.23	0.23	0.23	0.34	1.30
6 (true $\bar{\beta} = 0.72$ )	Mean $\hat{\beta}$	0.68	0.72	0.72	0.72	0.76
	Median $\hat{\beta}$	0.68	0.72	0.72	0.72	0.74
	SD $\hat{\beta}$	0.09	0.09	0.09	0.11	0.21
7 (true $\bar{\beta} = 0.72$ )	Mean $\hat{\beta}$	0.68	0.72	0.72	0.72	0.72
	Median $\hat{\beta}$	0.68	0.72	0.72	0.72	0.72
	SD $\hat{\beta}$	0.07	0.07	0.07	0.08	0.09
8 (true $\bar{\beta} = 0.72$ )	Mean $\hat{\beta}$	0.68	0.72	0.72	0.72	0.72
	Median $\hat{\beta}$	0.68	0.72	0.72	0.72	0.72
	SD $\hat{\beta}$	0.03	0.03	0.03	0.03	0.03

TABLE 12.  
Mixture models estimated with heterogeneous effect: estimation of  $\tau^2$

condition	value	Log-linear		Logistic	
		$s = 2$	$s = 3$	$s = 2$	$s = 3$
1	true $\tau^2$	0.02	0.02	0.04	0.04
	Mean $\hat{\tau}^2$	0.43	9.44	0.14	7.57
	Median $\hat{\tau}^2$	0.03	0.14	0.05	0.19
	SD $\hat{\tau}^2$	5.37	38.61	1.12	21.32
2	true $\tau^2$	0.02	0.02	0.04	0.04
	Mean $\hat{\tau}^2$	0.02	0.28	0.05	0.37
	Median $\hat{\tau}^2$	0.02	0.04	0.04	0.08
	SD $\hat{\tau}^2$	0.03	1.46	0.04	1.61
3	true $\tau^2$	0.02	0.02	0.04	0.04
	Mean $\hat{\tau}^2$	0.02	0.03	0.04	0.05
	Median $\hat{\tau}^2$	0.02	0.02	0.03	0.04
	SD $\hat{\tau}^2$	0.02	0.03	0.03	0.04
4	true $\tau^2$	0.02	0.02	0.04	0.04
	Mean $\hat{\tau}^2$	0.02	0.02	0.04	0.04
	Median $\hat{\tau}^2$	0.02	0.02	0.04	0.04
	SD $\hat{\tau}^2$	0.01	0.01	0.01	0.01
5	true $\tau^2$	0.00	0.00	0.00	0.00
	Mean $\hat{\tau}^2$	0.50	10.33	0.16	7.78
	Median $\hat{\tau}^2$	0.02	0.12	0.03	0.15
	SD $\hat{\tau}^2$	6.37	59.29	2.37	21.99
6	true $\tau^2$	0.00	0.00	0.00	0.00
	Mean $\hat{\tau}^2$	0.01	0.33	0.01	0.42
	Median $\hat{\tau}^2$	0.00	0.02	0.00	0.04
	SD $\hat{\tau}^2$	0.01	1.58	0.01	1.77
7	true $\tau^2$	0.00	0.00	0.00	0.00
	Mean $\hat{\tau}^2$	0.01	0.02	0.01	0.02
	Median $\hat{\tau}^2$	0.00	0.01	0.00	0.01
	SD $\hat{\tau}^2$	0.01	0.02	0.01	0.03
8	true $\tau^2$	0.00	0.00	0.00	0.00
	Mean $\hat{\tau}^2$	0.00	0.00	0.00	0.01
	Median $\hat{\tau}^2$	0.00	0.00	0.00	0.00
	SD $\hat{\tau}^2$	0.00	0.01	0.00	0.01