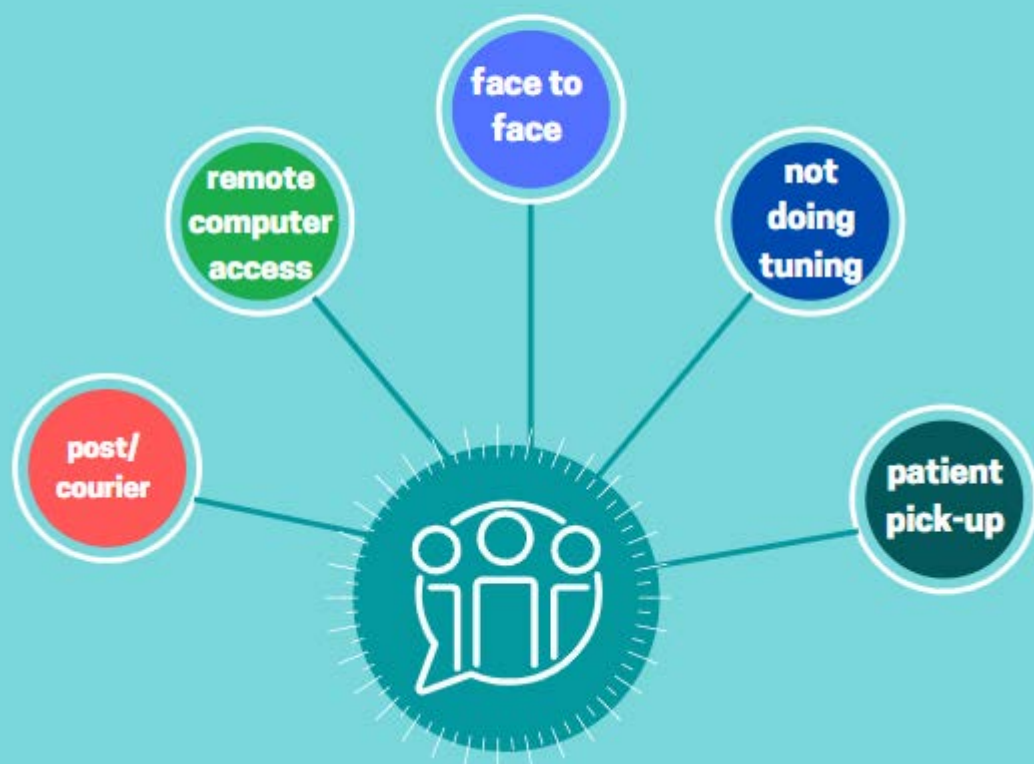


BCIG Survey of the Impact of COVID-19 on Service Delivery by Cochlear Implant Teams in the UK and EIRE

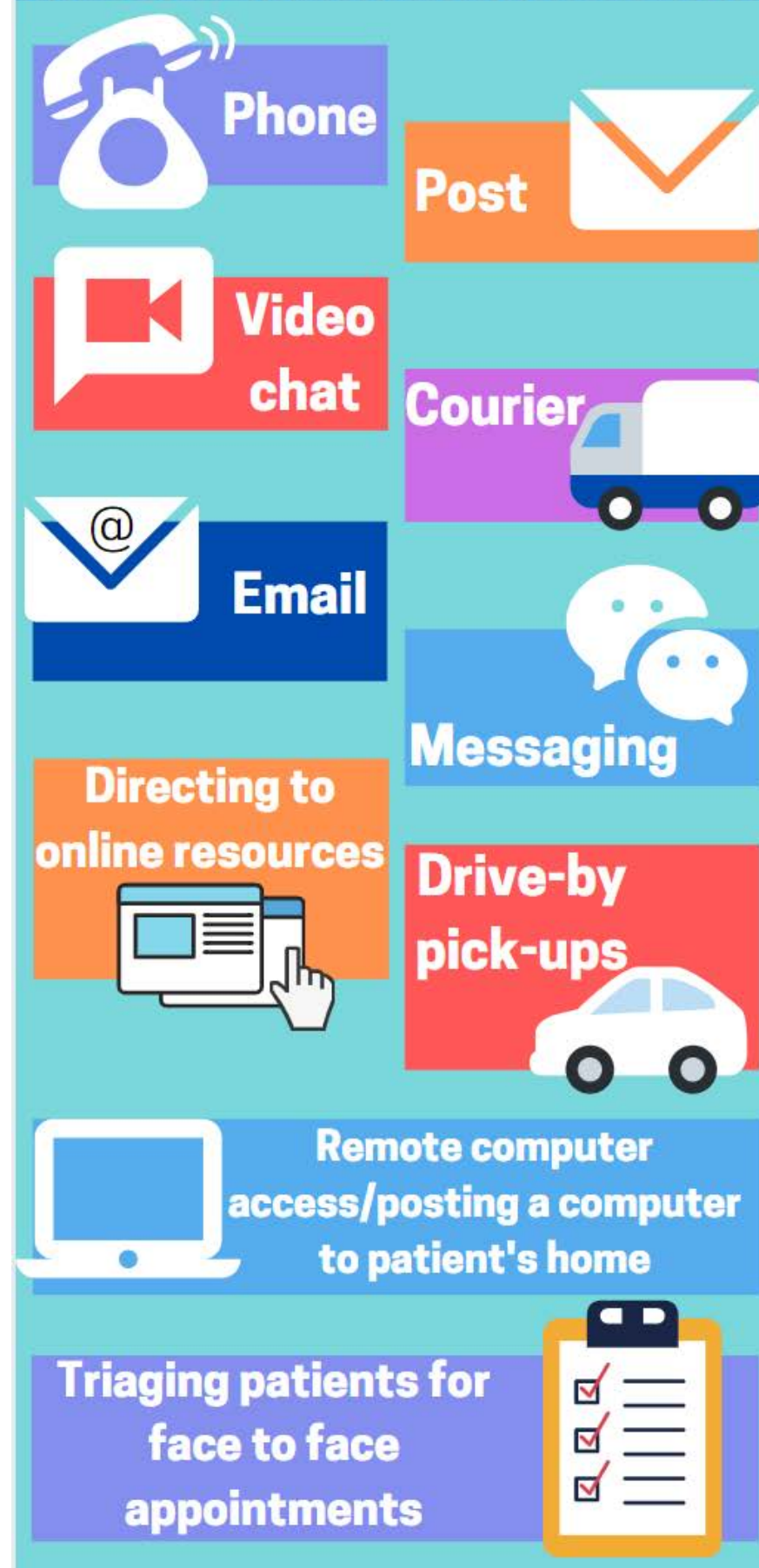
Helen Cullington, University of Southampton and Debi Vickers, University of Cambridge

As the COVID pandemic took hold, and clinical services changed unrecognisably, we sent out an online survey to BCIG members and centre coordinators in May 2020. The results provide a unique snapshot of the most challenging time in the history of UK CI centres.

HOW IS TUNING DONE?



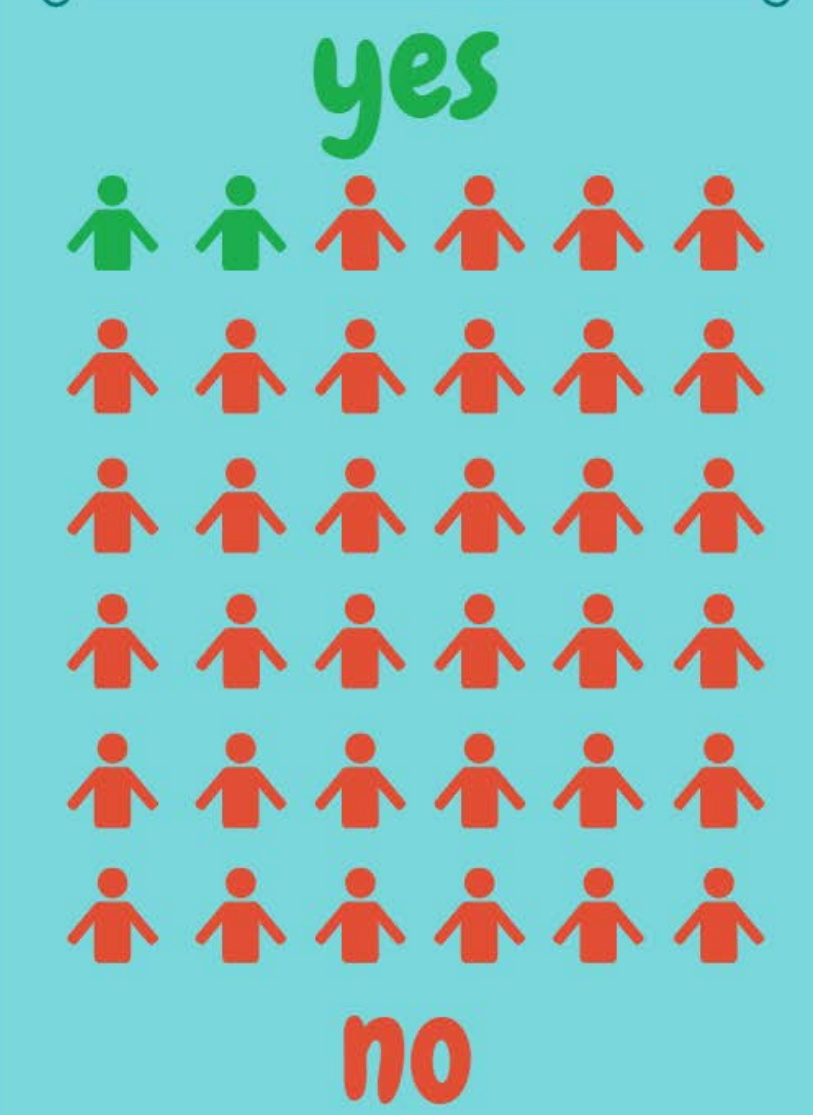
SINCE THE PANDEMIC, UK AND EIRE CI SERVICES HAVE PROVIDED CARE BY:



TECHNOLOGY USED



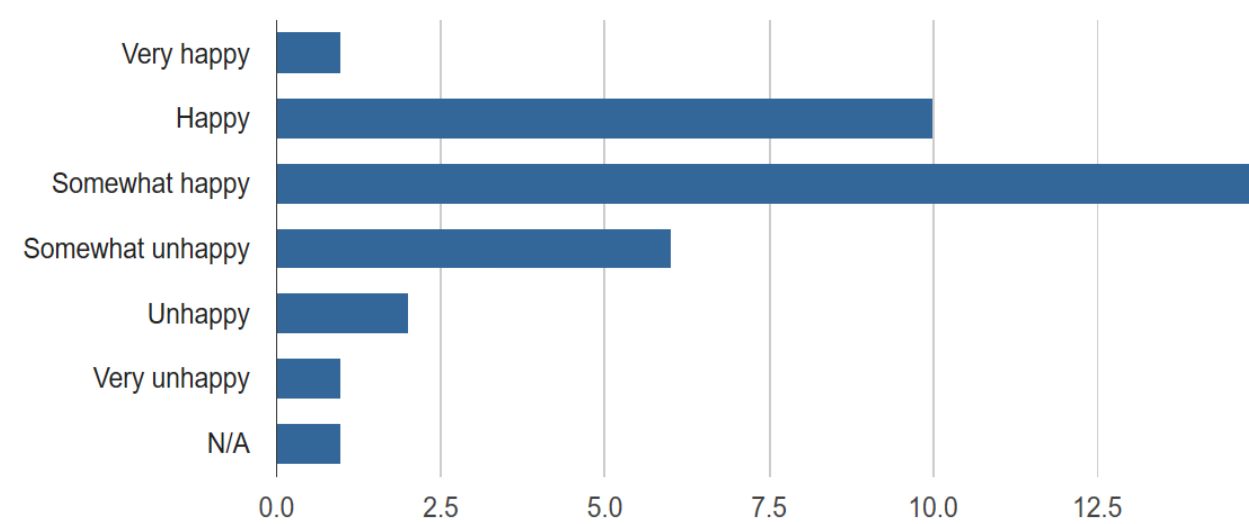
STAFF: WOULD YOU LIKE THE CLINIC TO GO BACK TO EXACTLY HOW IT WAS BEFORE THE PANDEMIC?



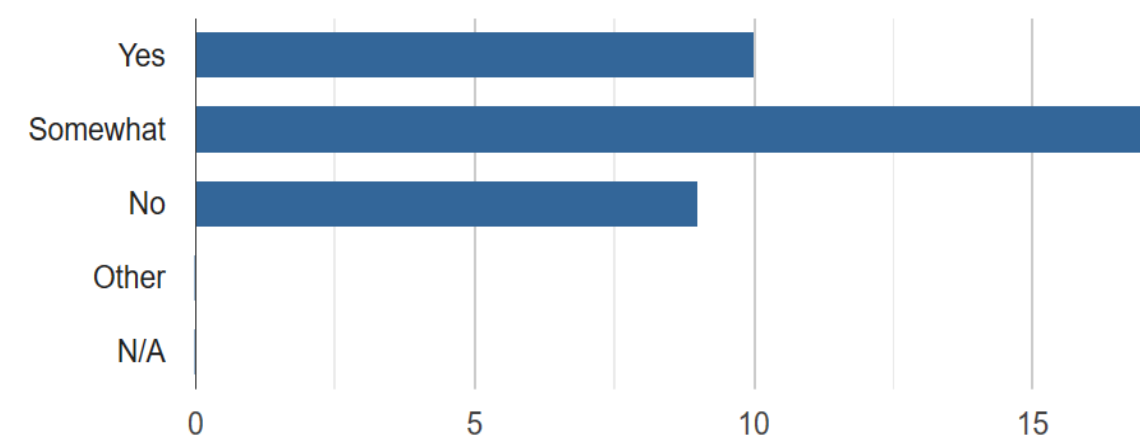
HOW IS REHAB DONE?



How are you coping with lockdown personally?



Do you feel anxious about returning to seeing patients due to COVID-19?



Redeployment to ICU



Innovation from adversity

