

RESEARCH NOTE

Open Access



Estimation of single-year-of-age counts of live births, fetal losses, abortions, and pregnant women for counties of Texas

Bismark Singh^{1*}  and Lauren Ancel Meyers²

Abstract

Objectives: We provide a methodology for estimating counts of single-year-of-age live-births, fetal-losses, abortions, and pregnant women from aggregated age-group counts. As a case study, we estimate counts for the 254 counties of Texas for the year 2010.

Results: We use interpolation to estimate counts of live-births, fetal-losses, and abortions by women of each single-year-of-age for all Texas counties. We then use these counts to estimate the numbers of pregnant women for each single-year-of-age, which were previously available only in aggregate. To support public health policy and planning, we provide single-year-of-age estimates of live-births, fetal-losses, abortions, and pregnant women for all Texas counties in the year 2010, as well as the estimation method source code.

Keywords: Live birth, Abortion, Fetal loss, Single-year-of-age, Pregnant women

Background

Estimates of pregnant populations in a geographic region can be critical to assessing public health risks, such as chemical exposure [1], alcohol use [2], and advanced maternal age [3]. Such estimates have also informed teenage pregnancy prevention plans [4], the locations of abortion clinics [5, 6], and smoking ordinances [7]. However, the precision and effectiveness of such efforts have been limited by their reliance on aggregated rather than age-specific pregnancy counts.

Pregnant populations can be estimated from counts of live births, fetal losses and abortions. However, such data are often aggregated into 3–5 year age groups. Only a handful of studies provide single-year-of-age pregnancy estimates, including several addressing the prevalence of Down's syndrome [8–10], fetal losses [11], and cross-age pregnancy comparisons [12].

Here, we describe an interpolation method for estimating single-year-of-age pregnancy counts from readily available, aggregated year-age live births, fetal losses and abortion data. To demonstrate the method, we derive county-level estimates across the state of Texas for the year 2010.

Main text

Nomenclature

We summarize the notation for our analysis below.

Sets

$i \in I$ set of counties
 $j \in J$ set of single-year-of-age groups for which we estimate live birth/abortion/ fetal loss counts: $\{[10 - 11], [11 - 12], \dots, [49 - 50]\}$
 $k \in K$ set of aggregated year-age groups for which we have live birth/abortion/ fetal loss counts:
Texas live births $\{[10 - 15], [15 - 18], [18 - 20], [20 - 30], [30 - 40], [40 - 50]\}$
Texas abortions $\{[10 - 15], [15 - 18], [18 - 20], [20 - 25], [25 - 30], [30 - 35], [35 - 40], [40 - 50]\}$

*Correspondence: bismark.singh@utexas.edu

¹ Graduate Program in Operations Research and Industrial Engineering, The University of Texas at Austin, 204 E Dean Keeton St, Austin, TX 78705, USA

Full list of author information is available at the end of the article



Texas fetal losses $\{[10 - 15), [15 - 18), [18 - 20), [20 - 25), [25 - 30), [30 - 35), [35 - 40), [40 - 50)\}$

$j \in J_k$ set of single-year age groups for which we estimate live birth/abortion/ fetal loss counts within the set of aggregated year-age group k

Data

w_{ij} count of women in age group j in county i
 B_{ik} count of live births from women in age-group k in county i
 A_{ik} count of abortions from women in age-group k in county i
 F_k count of fetal-losses from women in age group k for entire country
 TB_j live births from women in age-group j for entire state
 p_b proportion of year a woman is pregnant when she has a live birth: $\frac{9}{12}$
 p_f proportion of year a woman is pregnant when she has a fetal loss: $\frac{2}{12}$
 p_a proportion of year a woman is pregnant when she has an abortion: $\frac{3}{12}$

Parameters

b_{ij} live births from women in age-group j in county i
 f_{ij} fetal losses from women in age-group j in county i
 a_{ij} abortions from women in age-group j in county i

We seek counts of live births, fetal losses, and abortions denoted by b_{ij} , f_{ij} , and a_{ij} , respectively for county i , at a single-year-of-age resolution ($j \in J$), but counts are only available in aggregated year-age resolution groups ($k \in K$). As an example, for our case study, we have counts of live births in a county from women of age-group $k = [18 - 21)$, but do not have counts of live births from women of age-groups $j_1 = [18 - 19)$, $j_2 = [19 - 20)$, and $j_3 = [20 - 21)$. To obtain live births of a single-year-of-age, b_{ij} , we use a county-specific smoothed weighted interpolation scheme. We use aggregated year-age counts of live births, B_{ik} , available from the Texas Department of State Health Services (DSHS) [13], and derive weights from state-wide age-specific live birth information available from the Centers for Disease Control and Prevention (CDC) [14]. For abortions, a_{ij} , we use a county-specific cubic interpolation scheme. We use aggregated year-age counts of abortions, A_{ik} , available from the Texas DSHS [15]. For fetal losses, f_{ij} , we follow CDC recommendations [16] and use the same national fetal loss

rate for all locations. We use a cubic Hermite interpolation scheme and use national aggregated year-age counts for fetal losses, F_k , available from Ventura et al. [17]. We provide details on these estimations in the proceeding sections.

Further, supplementary files for this subsection are provided in Additional files 1 and 2.

We also define a subset, J_k , of the set of single-year age groups, J , as a set of single-year age groups contained in the set k . For example, for $k = [18 - 21)$ we have $J_k = \{[18 - 19), [19 - 20), [20 - 21)\}$. Finally, we assume that no woman is pregnant beyond the age of 50 and below the age of 10.

Live births

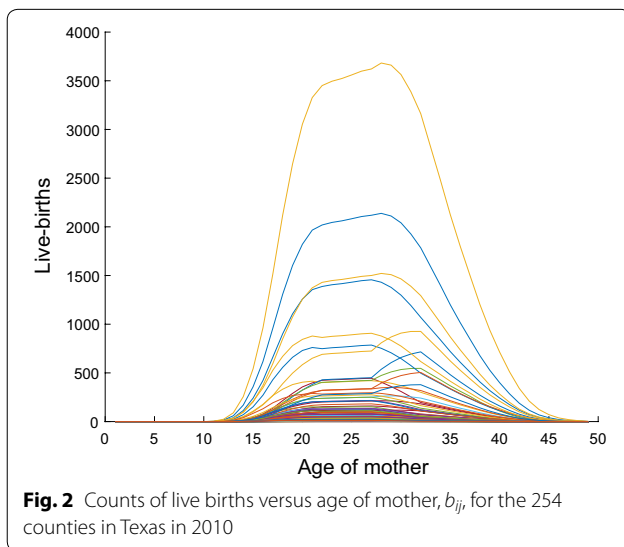
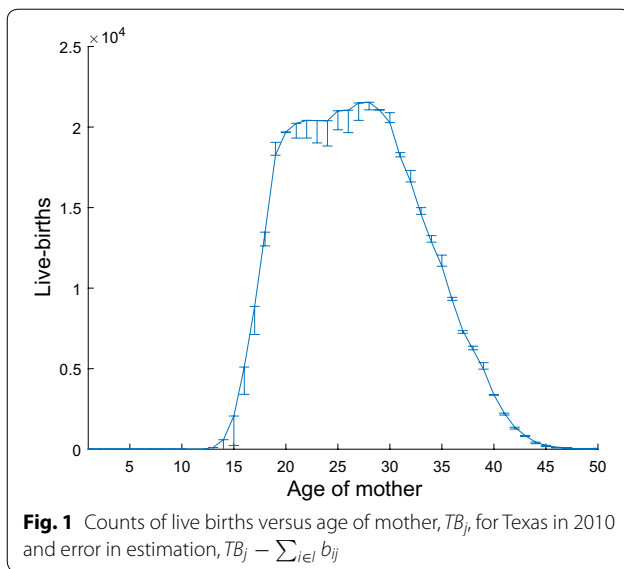
The National Vital Statistics System (NVSS) [14] provides counts for live births by single-year-of-age of the mother for the entire state of Texas, for the year 2010. We denote this quantity by TB_j , and present it in Fig. 1. However, the NVSS does not provide counts for live births by single-year-of-age of the mother, b_{ij} , for all counties of Texas for the year 2010. Further, aggregated year-age counts of live births, B_{ik} , are available from [13]. We describe our estimation scheme for b_{ij} below.¹

We assume all live births in a county for aggregated age-group, k , are proportional to the total live births in the entire state for that aggregated age-group, for all counties; i.e., $b_{ij} \propto TB_j, \forall j \in J_k, k \in K, i \in I$. With this assumption we can calculate values for b_{ij} .

Under this assumption, we do not associate live births across one aggregated age-group to another. For example, we do relate the number of live births from a mother of age $[21-22)$ to those of age $[22-23)$, since they both belong to the set J_{k_4} , but we do not relate the number of births from a mother of age $[29-30)$ to that of age $[30-31)$ as they belong to J_{k_4} and J_{k_5} , respectively. This can produce sharp changes in estimates of live births at the bin endpoints; i.e., at $j = J_{|k|}, \forall k \in K$. If this is undesired, we can use a moving-average filter to smooth out the estimates. Figure 2 plots the single-year estimates after the smoothing for the 254 counties of Texas. An alternative, is the stricter condition to assume all single-year-of-age live births are proportional to those in the entire state, for all counties; i.e., $b_{ij} \propto TB_j, \forall j \in J, i \in I$.

Further, the estimates for this subsection are provided in Additional files 3, 4 and 5.

¹ We have: $TB_j = \sum_{i \in I} b_{ij}, \forall j \in J$, and $\sum_{j \in J_k} b_{ij} = B_{ik}, \forall i \in I, \forall k \in K$. This gives a set of $|I||K| + |J|$ equations with $|I||J|$ unknowns. Further, $|K|$ equations are redundant. Since, $|K| < |J|$ and $|I| > 1$, the system of equations is underdetermined.



Fetal losses

The CDC recommends the use of national-average, as opposed to state-specific, fetal loss rates because most state reports of fetal deaths are limited to those with at least 20 weeks of gestation [16]; see also Macdorman et al. [18] and Ventura et al. [17]. Despite many states having more current data than national aggregates, the national data is more accurate [16]. Limiting fetal loss reporting to at least 20 weeks of gestation could be a significant underestimate. The National Survey of Family Growth estimates about one million fetal losses per year in the United States, with majority of these occurring before the reporting requirements are met [17]. For more details on the accuracy of available fetal loss data versus gestation time [19].

As with live births, counts of fetal losses for single-year-of-age, f_{ij} , are not available. We seek to estimate these counts using the available year-aggregated fetal loss rate for age group k , from Ventura et al. [17]. The fetal loss rates from Ventura et al. [17] are up to the year 2008, and we assume the rate did not change between 2008 and 2010. Since, the work in [17] does not report fetal losses from women aged 45 years and above, we assume no fetal losses occur in women above the age of 45. The blue steps in Fig. 3 present the aggregated national fetal loss rates; i.e., the number of fetal losses per 1000 women. Multiplying this rate by the national single-year-of-age counts of women, available from the US Census Bureau [20], and dividing by 1000, we obtain F_k or the number of fetal losses for age group k .

Next, we use a piecewise-cubic Hermite interpolating polynomial (pchip) to determine single-year-of-age counts of national fetal losses.² The national female population of age-group j is available from US Census Bureau [20]. The red curve in Fig. 3 plots the estimated national fetal loss rate (fetal losses per 1000 women) versus the age of the mother. Single-year-of-age counts of women in 2010, w_{ij} , for counties of Texas are also available from the US Census Bureau [20]. We, thus, obtain the number of fetal losses in a county i by multiplying $\frac{w_{ij}}{1000}$ with the previously obtained national fetal loss rate for age-group j . We present f_{ij} in Fig. 4.

Further, the estimates for this subsection are provided in Additional files 6, 7, 8 and 9.

Abortions

Unlike fetal losses, the CDC does not recommend the use of a national abortion rate due to wide variations in modes of data collection in geographic and demographic sub-populations [16]. County-specific counts of abortions in 2010 aggregated by mother's age, A_{ik} , are available from Texas DSHS [15]. We use a pchip scheme almost identical to our procedure for estimating fetal losses (and thus do not present the details), but applied separately to each county. Figure 5 plots the distribution of counts of abortions, a_{ij} , for the 254 counties in Texas.

Further, the estimates for this subsection are provided in Additional files 10 and 11.

Pregnant women

Finally, the number of pregnant women of age j for county i can be estimated as in [16],

² Other interpolation methods include linear interpolation and spline. Spline interpolation is known to produce smoother outputs, which can prevent the need for smoothing as a secondary step, but pchip prevents overshoots at intermediate points. For an introduction to the relative merits of different interpolation methods see, e.g., [21].

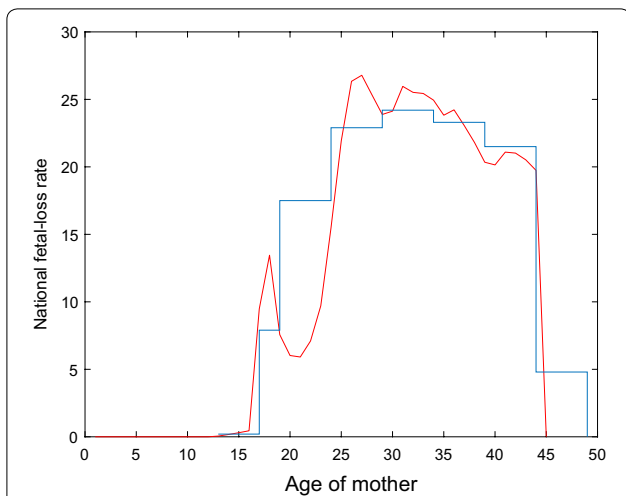


Fig. 3 National fetal loss rate (number of fetal losses per 1000 women) versus age of mother. The blue steps are aggregated data. The red curve is our estimate for all points, using interpolation

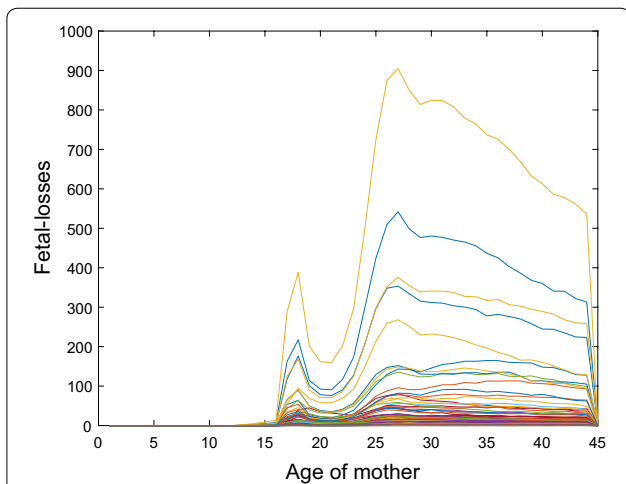


Fig. 4 Counts of fetal losses versus age of mother, f_{ij} , for the 254 counties in Texas in 2010

$$b_{ij}p_b + f_{ij}p_f + a_{ij}p_a. \tag{1}$$

Here, b_{ij} , f_{ij} , and a_{ij} are estimated in the sections above. Figure 6 presents the fractional outcome of pregnancies for ages [15–44].

Further, the details for this subsection are provided in Additional file 12.

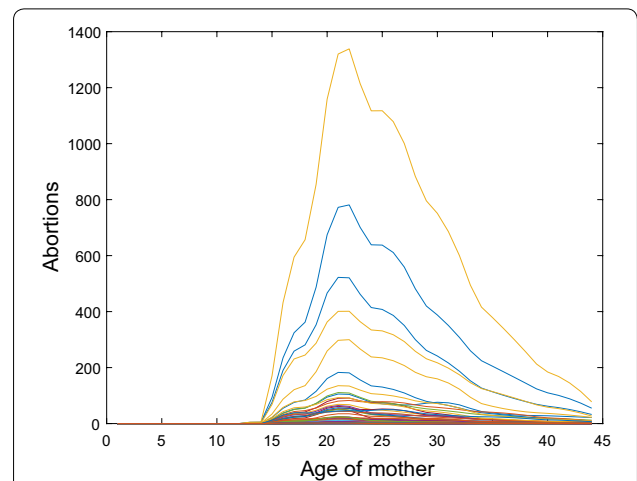


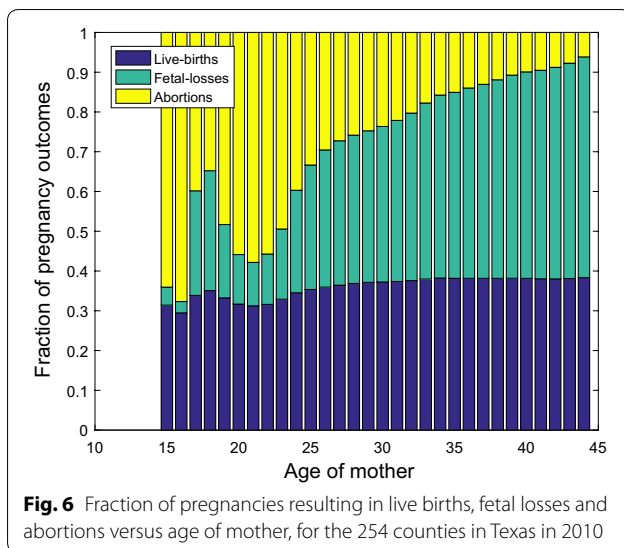
Fig. 5 Counts of abortions versus age of mother, a_{ij} , for Texas in 2010

Limitations

We make several comparisons between our estimates and reported data to assess the accuracy of our method. First, we compare our live birth estimates from age j as $\sum_i b_{ij}$, (using smoothed values of b_{ij}) to the known TB_j , and find an overall error of 3.84% (Fig. 1).

Second, the CDC reported a national fetal loss rate for women aged 15–44 in 2008 of 17.9 fetal losses per 1000 women [17], while our estimate for this age group in Texas is 18.0 fetal losses per 1000 women. However, the Texas DSHS [22] reported a much lower rate for women aged 15–44 of 0.46 fetal losses per 1000 women. This discrepancy likely stems from the Texas DSHS reporting criteria. DSHS tracks only fetal losses occurring after 20 weeks of gestation or with a birth weight of at least 500 g [23], while almost three quarters of fetal losses occur in the first trimester [16]. Across the US, state reporting requirements [23, 24] and reporting regularity [25] vary considerably. We support the CDC recommendations to assume national fetal loss estimates for county-level assessments. Our estimate of 16.9% fetal losses among all pregnancies in 2010 is consistent with the CDC report that approximately one in six pregnancies ended in a fetal loss in 2004 [16].

Finally, our estimate of 73,481 abortions among Texas residents in 2010 is close to the Texas DSHS report of 73,600 [22], yielding an error of 0.16%. Our method does not consider Texas residents who received abortions outside the state, which can be significant [26].



Estimates that include out of state abortions are slightly higher—75,151 reported by the CDC's Abortion Surveillance System [27] and 79,390 reported by Jones et al. [28].

Additional files

Additional file 1. This file contains the source information of all the input files we provide.

Additional file 2. This file contains a summary of all the input and output files we provide.

Additional file 3. This file contains aggregated live births for the 254 counties of Texas for the year 2010.

Additional file 4. This file contains single-year-of-age live births for the entire state of Texas.

Additional file 5. This file contains our estimated single-year-of-age live births for the 254 counties of Texas for the year 2010.

Additional file 6. This file contains single-year-of-age national populations of women for the year 2010.

Additional file 7. This file contains national aggregated fetal loss rates and corresponding populations of women for the year 2008.

Additional file 8. This file contains single-year-of-age populations of women for the 254 counties of Texas for the year 2010.

Additional file 9. This file contains our estimated single-year-of-age fetal losses for the 254 counties of Texas for the year 2010.

Additional file 10. This file contains aggregated abortions for the 254 counties of Texas for the year 2010.

Additional file 11. This file contains our estimated single-year-of-age abortions for the 254 counties of Texas for the year 2010.

Additional file 12. This file contains our estimated single-year-of-age fractional pregnancy outcomes for the entire state of of Texas for the year 2010.

Authors' contributions

BS and LAM collaborated in: (i) motivation of the study, and (ii) design and interpretation of the analysis. BS implemented the models and conducted the analyses. Both authors read and approval the final manuscript.

Author details

¹ Graduate Program in Operations Research and Industrial Engineering, The University of Texas at Austin, 204 E Dean Keeton St, Austin, TX 78705, USA.

² Integrative Biology, The University of Texas at Austin, 1 University Station C0930, 78712 Austin, TX, USA.

Author's information

BS received the B.Tech. degree in chemical engineering from the Indian Institute of Technology (IIT), Delhi, India in 2011, and the M.S.E. and PhD degrees in operations research and industrial engineering from The University of Texas at Austin, USA in 2013 and 2016, respectively. His research interests include applications of optimization to public policy, renewable energy, and healthcare. LAM received her B.A. degree in Mathematics and Philosophy in 1996 from Harvard University and her PhD in 2000 from the department of Biological Sciences at Stanford University. After completing a postdoctoral fellowship from the National Science Foundation, she joined the faculty of Integrative Biology at the University of Texas at Austin in 2003. Using a combination of mathematical modeling and experiments, her research lies at the interface of evolutionary biology and epidemiology.

Acknowledgements

This study was motivated by another research study the authors participated in with the Department of State Health Services of the state of Texas, jointly with Hsin-Chan Huang, David Morton, Gregory Johnson, and Bruce Clements that led to the work, "Equalizing Access to Pandemic Influenza Vaccines through Optimal Placement of Public Health Distribution Points". The authors would like to thank all these collaborators.

Competing interests

The authors declare that they have no competing interests.

Availability of data and materials

The datasets generated and/or analyzed during the current study are provided with the manuscript. This includes all input files and generated output files. The MATLAB source codes used during the current study are available from the corresponding author on reasonable request.

Ethics approval and consent to participate

All data used in this study is publicly available. No effort is made by the authors to determine the identity of any cases, or to use the information for any purpose other than for health statistical reporting and analysis. Any establishment discovered inadvertently should be reported to the authors or the NCHS Confidentiality Officer at: Confidentiality Officer, National Center for Health Statistics, 3311 Toledo Road, Hyattsville, MD 20782, Telephone: 888-642-4159, Email: nchsconfidentiality@cdc.gov.

Funding

The authors were partially supported by the National Institutes of Health (Models of Infectious Disease Agent Study Grant U01 GM087719-01) and the Centers for Disease Control and Prevention (Public Health Emergency Preparedness). The funders had no role in study design, data collection and analysis, decision to publish, or preparation of the manuscript.

Publisher's Note

Springer Nature remains neutral with regard to jurisdictional claims in published maps and institutional affiliations.

Received: 1 September 2016 Accepted: 25 April 2017

Published online: 08 May 2017

References

- Woodruff TJ, Zota AR, Schwartz JM. Environmental chemicals in pregnant women in the United States: NHANES 2003–2004. *Environ Health Perspect.* 2011;119(6):878.
- Denny CH, Tsai J, Floyd R, Green P. Patricia: alcohol use among pregnant and nonpregnant women of childbearing age—United States, 1991–2005. *Morb Mortal Weekly Report.* 2009;58(19):529–32.

3. Cecatti JG, Faúndes A, Surita FG, Aquino M. Impact of advanced maternal age on the outcome of pregnancy. *Revista Brasileira de Ginecologia e Obstetrícia*. 1998;20(7):389–94.
4. Department for Public Health, Division of Women's Health, Kentucky. Teen pregnancy prevention strategic plan. <http://chfs.ky.gov/nr/rdonlyres/077279b9-cc68-4dc6-afe2-eabc70581fcf/0/tpstrategicplan2.pdf>. Accessed 13 Mar 2016.
5. Gober P. Why abortion rates vary: a geographical examination of the supply of and demand for abortion services in the United States in 1988. *Ann Assoc Am Geogr*. 1994;84(2):230–50.
6. Sethna C, Doull M. Far from home? A pilot study tracking women's journeys to a Canadian abortion clinic. *J Obstet Gynaecol Canada*. 2007;29(8):640–7.
7. de Weerd S, Thomas CM, Cikot RJ, Steegers EA. Maternal smoking cessation intervention: targeting women and their partners before pregnancy. *Am J Public Health*. 2001;91(11):1733–4.
8. Hook EB, Lindsjö A. Down syndrome in live births by single year maternal age interval in a Swedish study: comparison with results from a New York State study. *Am J Hum Genet*. 1978;30(1):19.
9. Trimble BK, Baird PA, Opitz JM. Maternal age and down syndrome: age-specific incidence rates by single-year intervals. *Am J Med Genet*. 1978;2(1):1–5.
10. Hecht CA, Hook EB. The imprecision in rates of down syndrome by 1-year maternal age intervals: a critical analysis of rates used in biochemical screening. *Prenat Diagn*. 1994;14(8):729–38.
11. Andersen A-MN, Wohlfahrt J, Christens P, Olsen J, Melbye M. Maternal age and fetal loss: population based register linkage study. *Br Med J*. 2000;320(7251):1708–12.
12. Finer LB, Philbin JM. Sexual initiation, contraceptive use, and pregnancy among young adolescents. *Pediatrics*. 2013;131(5):886–91.
13. Texas Department of State Health Services (DSHS): Texas Health Data. 2016. <http://soupin.tdh.state.tx.us/>. Accessed 29 Aug 2013.
14. Centers for Disease Control and Prevention (CDC): National Vital Statistics System. 2016. <http://www.cdc.gov/nchs/VitalStats.htm>. Accessed 29 Aug 2013.
15. Texas Department of State Health Services: induced terminations of pregnancy by age and county of residence Texas, 2010. 2013. <http://www.dshs.state.tx.us/chs/vstat/vs10/t34.shtm>. Accessed 30 Aug 2013.
16. Centers for Disease Control and Prevention (CDC): estimating the number of pregnant women in a geographic area. 2013. <https://www.cdc.gov/reproductivehealth/emergency/pdfs/pregnacystimatobrochure508.pdf>. Accessed 28 Aug 2013.
17. Ventura SJ, Curtin SC, Abma JC, Henshaw SK. Estimated pregnancy rates and rates of pregnancy outcomes for the United States, 1990–2008. *Natl Vital Stat Rep*. 2012;60(7):1–21.
18. MacDorman MF, Kirmeyer S. The challenge of fetal mortality. *NCHS Data Brief*. 2009;16:1–8.
19. MacDorman M, Gregory E. Fetal and perinatal mortality: United States, 2013. *Natl Vital Stat Rep*. 2015;64(8):1.
20. United States Census Bureau: American fact finder. 2015. <http://factfinder.census.gov/faces/nav/jsf/pages/index.xhtml>. Accessed 17 Mar 2015.
21. De Boor C. A practical guide to splines, vol. 27. 1st ed. New York: Springer; 1978.
22. Texas Department of State Health Services (DSHS). Table 14A reported pregnancies for women age 15–44. 2012. <http://www.dshs.texas.gov/chs/vstat/vs10/t14a.shtm>. Accessed 16 Febr 2014.
23. Ethen MK, Canfield MA. Impact of including elective pregnancy terminations before 20 weeks gestation on birth defect rates. *Teratology*. 2002;66:532–5.
24. Texas Department of State Health Services (DSHS). Handbook on fetal death registration. 2011. <https://www.dshs.texas.gov/vs/field/docs/Handbook-on-Fetal-Death-Registration.pdf>. Accessed 12 Mar 2017.
25. Martin JA, Hoyert DL. The national fetal death file. *Semin Perinatol*. 2002;26(1):3–11.
26. Pazol K, Creanga AA, Zane SB, Burley KD, Jamieson DJ. Abortion surveillance-United States, 2009. *Morb Mortal Weekly Rep*. 2012;61(8):1–44.
27. Centers for Disease Control and Prevention (CDC). Reproductive health: abortions distributed by state of maternal residence and state of clinical service. https://www.cdc.gov/reproductivehealth/data_stats/Abortion.htm. Accessed 14 Mar 2017.
28. Jones RK, Jerman J. Abortion incidence and service availability in the United States, 2011. *Perspect Sex Reprod Health*. 2014;46(1):3–14.

Submit your next manuscript to BioMed Central and we will help you at every step:

- We accept pre-submission inquiries
- Our selector tool helps you to find the most relevant journal
- We provide round the clock customer support
- Convenient online submission
- Thorough peer review
- Inclusion in PubMed and all major indexing services
- Maximum visibility for your research

Submit your manuscript at
www.biomedcentral.com/submit

