

A REVIEW OF RECYCLING IN WALES

Ian D. Williams and Joseph Phillips

Faculty of Engineering and Physical Sciences, University of Southampton, University Rd, Highfield, Southampton, Hampshire, UK, SO17 1BJ.

ABSTRACT: Wales is one of the world leaders in household waste recycling with a steady recent recycling rate of ~65%. The Welsh Assembly Government (WAG) set a statutory target of achieving a 70% recycling rate by 2024/25. We reviewed historical trends in waste management in Wales from 2006 to 2020, with a focus on recycling. Authoritative, official data was obtained from WasteDataFlow, an Internet system for municipal waste data reporting by UK local authorities to government. Data is collected quarterly allowing the generation of time series plots, trendlines and like-for-like comparisons between groupings of various characteristics, such as number of separate kerbside collections, income, political preference, and impact of policy changes. Results showed that the positive and proactive approach taken by the WAG has achieved impressive results that contrast starkly with the recycling performance of other UK countries. In Wales, household waste disposed annually per person via landfill decreased from ~410 kg to <50 kg and household waste recycled increased from to ~150 kg to ~310 kg, with a recent increase in incineration with energy recovery to ~135 kg as infrastructure has come online. Recycling rates show a seasonal variation due to increases in garden waste sent for composting in the summer. There are variations in local authority performance across Wales, mainly caused by variations in the number of separate collections. Co-mingled collections tend to lead to higher contamination of recyclates that are then not able to be sold for recycling. Deprivation, as indicated by differences in income, also influences total waste arisings and recycling rates. A plateau of ~65% recycling rate was reached in 2020, with incineration reaching a rate of >25%. The recycling rate plateaus at exactly the same time as incineration comes on stream. Improvements to recycling rates can become more difficult when convenient alternative long-term infrastructure is available, even if it is lower in the waste hierarchy. Whilst further reductions and improvements to recycling in Wales will be more challenging, the WAG's track record shows that it tends to deliver on its waste-related plans and suggests it has the best chance of any of the UK's four countries of achieving its aims.

Keywords: Municipal waste management, Wales, recycling, time series, policy, circular economy

1. INTRODUCTION

Disposal via landfill has historically been the dominant method of municipal waste treatment and disposal in the European Union (EU). The EU's Waste Framework Directive of 1975 (Council Directive 75/442/EEC) introduced the waste hierarchy into European waste policy for the first time, emphasising the importance of waste minimisation. Implementation of the waste hierarchy was optional to member states; but there was an expectation that it would be included within national waste management legislation. The waste hierarchy is a guiding principle that gives top priority to preventing waste; when waste is created, it gives priority to direct re-use, recycling, recovery methods, such as energy recovery, and last of all disposal (Council Directive 2008/98/EC). However, in practice most countries have viewed the hierarchy as a "ladder" and have sought to climb it step-by-step from the bottom (landfill) to the top (waste prevention). In fact, there is nothing to stop countries heading straight for the top, skipping multiple

steps in one bound.

Due to the ongoing high levels of landfilling across the EU in the early 1990s, and apparent lack of adherence to the waste hierarchy, diversion of municipal waste from landfill became a priority (Goddard, 1995) and was legally addressed in 1999 by the EU's landmark Landfill Directive (Council Directive 99/31/EC). Specific targets were not set for the overall reduction of disposal via landfill but for the amount of biological municipal waste sent to landfill; by 2020 less than 35% of 1995's biological municipal waste tonnage must be landfilled (Council Directive 99/31/EC). Other EU Directives reinforced the desire to move towards more sustainable resource use and protection of the environment via application of the waste hierarchy. Perhaps the most significant directive is the EU Waste Framework Directive, introduced in 2008, which set an objective that 50% of all municipal solid waste was to be recycled, or composted, by 2020 (Council Directive 2008/98/EC).

However, despite all this legislative activity, there was no guarantee that these targets would be met. In fact, widely different combinations of materials recycling, composting, incineration with energy recovery and the landfilling of residues are utilised for the delivery of waste management across the EU (Grosso et al., 2010). The combination of methods used by countries depends upon many factors, including the availability of space, finance, technology, workforce skills and infrastructure; and political willingness to proactively implement the principles of the waste hierarchy.

In the United Kingdom (UK), waste policy is a devolved matter. The devolved administrations of England, Scotland, Wales, and Northern Ireland are each responsible for setting their own waste strategy and policy. Whilst the core focus of these strategies has been on ensuring national compliance with EU directives, Scotland and Wales have typically chosen to be bolder than England and Northern Ireland by taking ambitious approaches that often exceed the EU's requirements. A summary of each country's approach to waste management and recycling since 2010 is provided in sections 1.1 to 1.4 below.

1.1 Waste management in England

The recycling rate in England reached 40.3% in 2009/10. Here, the national government aimed to be a 'zero waste economy' by 2020 by recognising waste as a resource in-line with the waste hierarchy and to reduce greenhouse gas (GHG) emissions. However, whilst the *Waste Management Plan for England 2013* aimed to establish a path towards a 'zero waste economy', it did not include any new waste management policies for England. The government adopted a relatively *laissez-faire* approach to waste regulation and policy in England and only a small number of government-led initiatives were anticipated. These included a plan to improve the quality of recyclates produced at materials recycling facilities, promotion of waste prevention and reduction efforts, and the introduction of a policy for the delivery of major energy infrastructure, including new energy from waste installations (principally advanced thermal treatment technologies). There was a commitment to enhancing the role of anaerobic digestion (AD) in England, with AD recognised as being an effective means of reducing GHG emissions from waste management and supplying renewable energy. Overall, English waste strategy and regulation was chiefly driven by use of the Landfill Tax escalator - an environmental tax designed to help reduce the amount of waste going to landfill – local initiatives and government-issued recycling targets for local authorities. English local authorities were given flexibility in deciding how to meet their targets and the government stated that it would only intervene in waste matters where necessary or where there is a clear market failure. To illustrate, here is a direct quote from the responsible minister, Eric Pickles, from a contemporary newspaper article (Pickles, 2010):

“If you want people to do something, then it's always much more effective to give them support and encouragement – a nudge in the right direction – than to tell them what to do and then punish them if they don't obey. Recycling is a case in point. We all recognise that we've got to cut down the amount that gets dumped in landfill. The previous government planned to do that in the most heavy-handed way possible: with bin taxes that would hit people in their pockets with exorbitant fines, enforced by an army of bin

bullies to snoop through people's rubbish. In all likelihood, this would have just fuelled fly-tipping, backyard burning and more trips to the dump as people tried to avoid paying the tax."

This hands-off approach failed dismally, as predicted by Farmer et al (2015). England did not meet its target to recycle 50% of household waste (known as 'waste from households') by 2020; indeed in 2020, this recycling rate was 44.0%, down from 45.5% in 2019, and just 4% higher than a decade earlier. The government claimed that targets were missed because of the impact of the Covid19 pandemic, and whilst this was undoubtedly a factor, it hides the long-term inability or unwillingness of the responsible ministers to proactively enact its own plans.

1.2 Waste management in Northern Ireland

The recycling rate in Northern Ireland was the lowest in the UK in 2009/10 at 35.2%. As a response, the (then) Northern Ireland Environment Minister (Alex Attwood) proposed a "bold new plan" to prevent waste being disposed via landfill by using planned interventions that focus only on areas where most impact could be achieved. Consequently, the national waste strategy for Northern Ireland, *Delivering Resource Efficiency*, published in 2013 set out a policy framework for sustainable management of waste. It ambitiously proposed to introduce a 60% recycling target by 2020 for LA collected municipal waste; this ultimately defaulted to the EU's 50% target. The strategy emphasised the need to view waste as a resource, with landfill diversion recognised as the key driver and contained specific targets for municipal solid waste management by 2015 and 2020. Recycling targets for specific waste streams were in line with those of the EU Directive on Packaging and Packaging Waste (94/92/EC). In September 2014, the Northern Ireland Executive released its National Waste Prevention Programme, *The Waste Prevention Programme for Northern Ireland – the Road to Zero Waste*, which outlined a strategy to reduce waste arisings, improve resource efficiency and emphasised the need for a whole life cycle approach in evaluating resource management solutions.

Northern Ireland first met its recycling rate target in 2018/19, although it fell back to 50% in 2020/21 from a high point of 51.1% in 2019/20.

1.3 Waste management in Scotland

The recycling rate in Scotland was 36.7% in 2009/10. *Scotland's Zero Waste Plan*, published in June 2010, provided Scotland's overarching, long-term policy document for resource efficiency and sustainable waste management. The document outlined the Scottish Government's long-term vision for a 'zero waste' Scotland. Measures promoted in the document included a ban on landfilling of certain recyclable materials, a requirement for local authorities to separately collect certain wastes (e.g. food waste) restrictions on thermal treatment feedstocks and the establishment of a 25% cap on local authority collected waste (LACW) sent for thermal treatment and measures to reduce GHG emissions from waste management. The document sets a series of targets for recycling, preparation for reuse, or composting (or AD) of LACW and a target for a maximum landfill rate of 5% of LACW by 2025. These policies and targets were legally established by the Waste (Scotland) Regulations (2012). The Scottish Government followed this up by publishing the Scottish Household Recycling Charter in 2015 that set out a more consistent approach to household recycling collection systems. The charter was supported by a Code of Practice, also published in 2015, that aimed to increase householder participation in recycling, improve the quality of recyclate; and provide greater economic benefits and opportunities for savings in local authorities. Further actions included assistance from the Scottish Materials Brokerage Service to develop contracts to reduce risk from price volatility of recyclables and a statutory Code of Practice for Materials Recovery Facilities.

Scotland's recycling rate peaked at 45.5% in 2016 but has since dropped slowly, partially because of the pandemic and partially because of falls in paper and cardboard recycling. Despite its plans and

measures, Scotland failed to meet its EU target to recycle 50% of household waste by 2020, achieving only 44%.

1.4 Waste management in Wales

The recycling rate in Wales was just 7% in 2000/01, reaching 40.5% in 2009/10 as a direct response to the Landfill Directive (Council Directive 1999/31/EC). The Welsh Assembly Government (WAG) published its ambitious long-term waste strategy, entitled *Towards Zero Waste* in 2010. It set out a framework for improving resource efficiency and the sustainability of waste management in Wales until 2050. Measures promoted include waste prevention (a target of an annual 1.5% reduction in national waste arisings until 2050 is set), separate collection of food waste, the provision of information on the destinations of recycle, kerbside sort for household dry recyclables collection (this measure is currently under review). The document set a series of targets for recycling, preparation for reuse, or composting (or AD) of LACW and stipulated that, at a minimum, 80% of waste sent for recycling, preparation for reuse, or composting (or AD) must come from source separation. Further targets included maximum levels of landfill of municipal waste, 10% in 2019/20 and 5% in 2024/25, and maximum levels of thermal treatment of MSW for individual local authorities. These policy measures and targets were legally established by the Waste (Wales) Measure 2010. Implementation of the strategy was anticipated via six key Sector Plans that described the role of each sector in delivering the outcomes, targets, and policies in *Towards Zero Waste*.

In December 2013, the WAG introduced the *Waste Prevention Programme for Wales*, which addressed waste prevention in fulfilment of the requirements of the EU Waste Framework Directive. The strategy supported *Towards Zero Waste* and outlined policies and targets to encourage waste prevention action from households, businesses, and the public sector. The WAG also established a broad and ambitious cross-sectoral sustainable development scheme, which is outlined in *One Wales: One Planet*, published in May 2009. After years of consultation, the bold policies outlined in *One Wales: One Planet* were legally established through the Well-being of Future Generations (Wales) Act 2015.

The WAG has successfully delivered its plans. Welsh councils first recycled, reused, or composted its target of >50% of municipal waste in the twelve months to December 2012 (52%). Wales's recycling rate has steadily continued to increase, recently rising from 65.1% in 2019/20 to 65.4% in 2020/21, a record high. Wales undoubtedly had tougher Covid19 restrictions in place than England, and total municipal waste arisings dropped by 2.6% in the last year, making this achievement even more impressive.

So why has Wales been so much more successful in managing its waste than its UK contemporaries? The purpose of this paper is to critically review historical trends in recycling in Wales and the reasons for any changes to see if the WAG's distinctive approach has been successful.

2. METHODS

2.1 Data collection

Historical data for all Welsh local authorities (LAs) were secured from WasteDataFlow (<https://www.wastedataflow.org/>) from 2006 onwards. Secondary data are commonly used to inform waste management studies (Hahladakis et al., 2018). WasteDataFlow is the official online system for municipal waste data reporting by UK local authorities to government. The system has been in use since April 2004 and researchers/organisations can register to access data.

Waste per person estimates were used to compare LAs. All 22 Welsh LAs were selected whilst also obtaining rates for all three waste streams. Mid-year population statistics were collected from 2006 to

2019 from StatsWales (<https://statswales.gov.wales/>), which matches that of the timeframe was available from WasteDataFlow. Some analysis demanded a quarterly interpretation of per person values; in this case, the mid-year figures were used for every quarter of the given year. When yearly data were presented, the mid-year population was applied directly to that statistic. This analysis follows a similar concept to that used in (LI et al., 2022).

It is important to note that WasteDataFlow changed its method of data presentation in 2012 (Farmer et al, 2015). Like all data collection systems, WasteDataFlow is subject to continual improvement and development that impacts on the way that data is entered. The nature of introducing these changes can produce data interpretation issues, such as with historic data already in the system. To ensure the best data were used in this study, contact was made, several times, with the staff from WasteDataFlow to clear any discrepancies and to acquire additional data.

The number of separate kerbside collections was recorded by visiting each LA's website and finding the residential help guide. Data was summarised using a colour-coded table that presented if a material was collected independently or if it was part of a grouping of items, which allowed for the number of separate kerbside collections to be calculated. The websites that were visited listed the time between collections which meant that the number of weeks between kerbside waste collections could be collected and listed.

2.2 Data analysis

To assess the difference in recycling rates of the extreme ends of the spectrum, a comparison was made between the LAs with the 4 highest and lowest number of collection separations. Per person waste weights were used to enable comparisons and trendlines allowed for a clear visual representation of the changes over time.

To obtain a representative pattern of political preference within Wales, both the general and Senedd election results were recorded from 1999 to 2019. By mapping the overlap between consistency and LA borders, each constituency was listed next to every LA in which part or all of it resided. Using result for each political party for each election, the most common party listed within the LA grouping of constituencies was taken as the result. The most three common parties - Labour, Conservative and Plaid Cymru - were studied.

3. RESULTS

This section presents the results, as follows:

- Waste produced per person (total, recycled, landfilled, incinerated)
- Trends in waste treatment
- Separate available kerbside collection methods
- Political influence
- Influence of income
- Impact of policy introductions
- Other factors.

3.1 Waste produced per person

Figure 1 shows the fluctuations in total waste arisings per person per year in Wales. The population increased steadily from just under 3 million in 2006 to 3.15 million in 2019. The waste generated per person seems to show a steady reduction from 2007 to 2011. However, these data were probably

miscalculated by the WasteDataFlow system, confirmed by the government department. The values remained relatively steady at ~500 kg per person during 2012-2016. From 2016-2018, there was a decrease in total waste produced per person in Wales at a rate of ~15.6 kg per year.

The trend of total annual recycled waste per person in Wales is displayed in Figure 2. The recycling rate (i.e. the percentage of Welsh LA municipal waste that was reused, recycled, or composted) has increased considerably during the last two decades (from around 5% in the late 1990s). Recycling rates show a seasonal variation due to increases in garden waste sent for composting in the summer. An overall positive trend is observed 2006-2019, rising at an annual rate of ~3.86 kg per person. This value could potentially be used to predict future changes (assuming that prevailing conditions remain the same and recognising that the most influential variation in recent years is the COVID-19 pandemic).

The total waste sent to landfill annually per person has been gradually decreasing since 2006, as shown in Figure 3. The clear trendline for landfilled waste shows a relatively steep decline over time, with a year-on-year average decrease of ~7.14 kg of waste per person. The annual decrease starts to flatten off from 2016 onwards, and during the pandemic period of 2019-20, 7.6% of Welsh municipal solid waste was sent to landfill (Statistics for Wales, 2020).

Figure 4 highlights this flattening off in more detail as the annual waste per person to landfill disposal reaches values of <50 kg. Applying a trendline to the data from 2016 onwards yields a new, lower rate of decrease. This trendline predicts the end of waste sent to landfill to be (about) the year 2030, assuming ongoing steady progress. However, of course, it is more likely that a very small amount of landfill capacity will be needed for particular wastes.

From 2006, the waste sent for incineration remained very low, below 5 kg per person, per quarter, until mid-2013, when a sharp increase of 9.36 kg occurs between the years 2013 and 2016 due to incineration infrastructure coming online (Figure 5). Since then, this value has fluctuated between 35-40 kg per person per quarter year.

3.2 Waste treatment

Figure 6 shows trends in Welsh waste treatment. The figure shows a steady decrease in landfill usage alongside the ever-increasing use of recycling and a later sudden step-change in incineration. A plateau of ~65% recycling rate can be observed towards the end of the period, with incineration reaching a rate of >25%.

3.3 Separate kerbside collection methods

Figure 7 displays the difference in recycling rate by different methods of kerbside waste collection. Regular seasonal fluctuations are again observed (see Section 3.1). LAs that have a lower number of separate collections show consistently higher recycling rates than those with a higher number, with a sudden change during the Covid-19 pandemic. It is worth noting that over 2012-2019, LAs with higher number of separate collections show a 1.64% yearly increase in recycling rate compared to a 1.24% rate of increase from those with 4-5 collections.

The range of approaches to collection taken in Wales is evident from Table 1. Every LA has separate collections for food and green waste, as demanded by law, and all but 5 have separate collections for glass, which is not often mixed with other materials.

3.4 Political influence

There are no significant differences between the datasets seen in Figure 8, which show recycling rates by LA political party winners. All sets show the usual seasonal fluctuations and follow a steady increase in recycling rate from 24-30% in 2006 to all achieving a rate of ~62% in early 2019. There are noteworthy

spikes during mid-2009 and again in mid-2014. From 2016 onwards, all averages converge and show a plateau at 60-65%. Labour-held constituencies, which tend to have the most deprived communities, are often slightly the worst performing in recycling rates.

To test this theory, Labour and non-Labour LAs are shown by recycling rate in Figure 9. The figure clearly shows that LAs categorised as Labour held from 2007-2016 consistently underperformed in comparison to non-Labour LAs. However, from 2016 onwards, the values by party are indistinguishable.

3.5 Influence of income

Figure 10 illustrates the average total annual waste produced per person for the four highest and four lowest income LAs in Wales. By examining the lowest earners exclusively, we can see that there is a small steady increase (0.06 kg yearly) in waste arisings throughout 2012 to 2019, except for 2016. This spike brings the average waste arisings for the lowest earning local authorities to match that of the peak of highest earning authorities for the only time. The highest earning LAs show a steady decrease in waste production of 1.32 kg yearly. The trendlines converge by 2019.

3.6 Impacts of policy introductions

The reasoning behind publishing new policies and targets is to achieve an improvement in performance of the waste management system. Thus, when the WAG release new strategy changes in response to recycling rate, a subsequent improvement is expected. By examining, solely the impact of the second to most recent publication regarding recycling targets ('Towards Zero Waste, 2013') increases in recycling rate were clearly observed (see Figure 11). Regular incremental improvements were consistent until 2016-17. The biggest step change occurred in 2015. The diminishing rate of increase from 2016-17 is consistent with the phased introduction of incineration infrastructure, as noted previously.

3.7 Other factors

Figures 12-17 show other data trends investigated. Waste data associated with the location of a local authority in Wales, age profiles and attractiveness to tourism were studied. No notable trends, observations or relationships relating to location, age profile or numbers of tourists were observed.

4. DISCUSSION

Historical trends in landfill, recycling and incineration in Wales from 2006 to 2020 have been reviewed. The results show several possible links between recycling rates and local authority groupings. There is a large variation in local authority performance across Wales.

The fluctuations in total waste produced per person are due to several factors, including increased urbanisation, economic development (until more recent years), changes to shopping habits, and improvements in standard of living (Diaz-Barriga-Fernandez et al., 2018; Tiseo, 2022). The expected increase in waste arisings due to these factors has been combatted by the WAG's initiatives to encourage the reuse of items and recycling as well as a focus on eliminating single use plastics (Towards Zero Waste, 2015). It has been supported by dominant chain superstores implementing initiatives to reduce packing on their items; these companies can have a big impact on an area's waste statistics due to their size and popularity (iSustain Recycling, 2018). Major UK supermarkets set initiatives to be more sustainable in terms of packaging, food, and product waste (e.g. Tesco, Asda, Sainsbury's). These two changes in total waste production are likely to cancel out, as seen from 2012 onwards.

Between 2016 and 2018, annual waste per person in Wales decreased by 15.62 kg, a stark contrast

to the prediction made by the World Bank, which expected global waste to grow by 70% by 2050 without taken (World Bank, 2018). This highlights the importance of the proactive approach taken by the WAG to support its strategy towards a circular economy for Wales (Welsh Government, 2021).

Seasonal fluctuations are evident from Figure 2, mainly caused by garden waste. During the summer months, those with grass dominated gardens will have more of this type of waste to be composted than in winter months. This is due to the summer conditions allowing for a faster rate of growth than normally observed (Yahia et al, 2019). As this waste is considered in the recycling total, large fluctuations are seen when reading data by yearly quarter. Regardless of these seasonal changes in the data, the overall recycled waste has continued to increase throughout this period.

By following the observed increase of 3.86 kg yearly, and assuming a constant waste production of 490 kg, consistent with the most recent readings in 2018, and using the trendline prediction of current waste production of 86 kg, it would take until the year of 2123 for 100% of waste production to be recycled, assuming that this became technically possible. The WAG's action plans have focused on setting statutory targets, reduction of cross-contamination, improving public awareness and recycling facilities; and these have clearly contributed to an improvement of the Welsh recycling rate (Welsh Government, 2020). The WAG has set many statutory targets regarding recycling, surpassing the EU's targets and surpassing the targets of their UK counterparts (Ogleby, 2017). The most recent target set, in the Beyond Recycling publication (2019-20) is 64%. Local authorities that do not attain this objective within the timeframe, will be fined £200 per tonne (Mayor, 2019). This will also apply to the 70% target set to be achieved by 2025. Thus, LAs are incentivised to achieve such goals to avoid being fined.

Many Welsh LAs have implemented a scheme which increases the number of varying separations for kerbside recycling, with 59% of the 22 local authorities currently running seven or more separate collections. This initiative was expected to reduce cross-contamination and to produce an acceptable quality of recyclate (Welsh Government, 2014). A range of approaches have been taken by LAs across Wales. Some, such as Caerphilly, decided not to deviate from the comingled collection method for the whole time analysed, whereas others, such as Conwy currently have 9 separate kerbside collection options (see below). Historically, increasing the range of material collected and simplifying collection systems has been shown to increase recycling and decrease the residual waste stream (Farmer et al., 2015), although more recent data shows that co-mingled collections lead to higher contamination of recyclates that are then not able to be sold for recycling (Spencer, 2021).

Public knowledge about recycling has been stimulated by the organised campaign of 'Recycle Week', which started in 2003 and plays a big in role in highlighting the importance of recycling actions households can take and encourages more to get involved (Recycle Week 2021, 2021). Schools throughout Wales are stimulated to get involved with the eco-schools campaign, where a group of young learners form a committee to tackle environmental issues, which includes waste production, and subsequently aim to raise a 'green flag'. Many campaigns and public outreach programmes have been targeted at the Welsh public to increase awareness and introduce new ideas, as heard on national radio stations (Eleri, 2021). Many studies have shown that householders who understand the need for, and benefits of, recycling participate more (Davis et al., 2006). Education and promotion of recycling is necessary alongside improved infrastructure and services to effect behavioural change and enhance participation (Read, 1999; Shaw et al, 2006; Wilson and Williams, 2007; Timlett and Williams, 2011).

Recycling facilities across Wales have been targeted for improvement for several years, specifically recycling centres for non-kerbside waste were targeted by WAG to allow an increase in recycling rates following the inclusion of bulkier, non-feasible material collections such as construction waste, vehicle deposits and waste from house renovations. Many sites now handle over 20 waste streams, with some also housing small shops, taking in items that were deemed as not ready for end-of-life treatment, and sold to be reused (Welsh Government, 2020). This has allowed a larger percentage of waste to be disposed of responsibly and potentially sustainably, increasing the total waste recycled.

In recent years, the extensive damage landfilling waste can induce on our planet has been highlighted.

Its effects include the production of greenhouse gases, soil contamination (Whalen, 1990), and wildlife incidents (Asarhelyi, 2021). Danthurebandara et al (2012) reported that landfills contributed 20% to the total global anthropogenic methane production. Wales was historically heavily reliant on landfill for waste management and so moving away from this pathway quickly posed a significant problem for the WAG. Figure 3 shows a downward trend the use of landfill for Welsh waste, with a plateau from 2016 onwards. This is likely due to the challenges faced in achieving zero waste to landfill, as subsidiary products from other waste management techniques, such as ash and other hazardous waste cannot be recycled. Whilst the WAG's approach has successfully and quickly reduced waste disposed via landfill, further reductions will be more challenging. These data illustrate the Pareto Principle, which suggests that 80% of outcomes come from 20% of causes (Brook, 2020).

Figure 5 shows total incinerated waste per person in Wales from 2006 to 2019, with a sharp increase from 2013-2016 as facilities came onstream, and a subsequent plateau. The sharp increase in incineration matches the opening of the largest energy recovery facility (ERF) in Wales - the Viridor Cardiff ERF opened in mid-2014 (Viridor, 2021). Other incineration plants were used before (and after) the opening of the Cardiff Viridor ERF. Incineration with energy recovery is preferable to landfill since the immediate emissions related with incineration are less environmentally damaging in the long term compared to methane production associated with landfill (Statistics for Wales, 2015; Harrabin, 2018; Anshassi et al., 2021).

Figure 6 shows that recycling plateaus at the same time as incineration comes on stream; Farmer et al (2015) demonstrated that once a LA's waste destinations become reliant on incineration (so-called "feeding the beast"), incentives to enhance other means for waste management are diminished. In Wales, a strong case was made for incinerating plastics rather than letting them sit in landfill, as reflected in the WAG strategy changes at the time. Plastics have a high calorific value, meaning the incineration would yield more energy recovery than other materials. Plastics also have the second longest breakdown times of any materials sent to landfill, approximately 200-500 years, and is estimated that discarding plastics to landfill accounts for >15% of all methane production (Vasarhelyi, 2021). Thus, a decision was made to redirect plastics to the energy recovery rather than landfill if the option of recycling is not available.

Figure 7 displays the total recycled waste of LAs with the most and least separated collection methods of kerbside waste per quarter. The regular seasonal fluctuations due to the increase in grass/garden waste in summer can be observed throughout. One of the three LAs with the highest number of collection methods, Merthyr Tydfil, experienced an unusual surge in recycled waste per person. This is because in early 2015 the LA initiated a change from co-mingled collection to several separate boxes/bags. Under the same change of scheme, in January 2015, the authority also changed the size of the wheeled residual waste bin, reducing it from 240 l to a streamlined 140 l version (Wood, 2015 & Perchard, 2016).

This graph implies that the Welsh public values convenience highly when it comes to recycling. While both datasets show an overall increase in recycling rate, a yearly average increase of 1.64% was calculated for those local authorities with 9 separate collections, whereas an increase of 1.24% is seen for those with the lowest number of collection methods. However, it must be noted that those LAs considered for having the highest number of separate collections were not in this category for the whole period as changes were made at different times within the time frame provided. The categorisation of these LAs was determined by using current number of separate kerbside collections. Whilst LAs with a higher number of collections experience a slightly faster rate of increase over the period, both datasets show times of great progression, stagnation and at sometimes, regression. Figure 7 shows that the recycled waste from authorities with the lower number of collections fell beneath the opposing dataset in 2019; this is primarily due to a relatively weak performance from one authority (Carmarthenshire, which operates co-mingled collection) in recent years, with it ranking 22nd out of the 22 local authorities for the 2018-19 review (Audit Wales, 2021).

A clear convergence is visible in more recent years, highlighted by the trend lines. This partially coincides with the introduction of infrastructure for incineration. It is also highly likely that the Welsh public

are broadly content with the way in which they have been asked to recycle their waste, and that this has become habitualized. This suggests that the difference in number of collections is no longer a significant determinant in recycling rate, although contamination of co-mingled material remains a problem (Spencer, 2021).

Figure 8 shows the recycling rates of LAs categorised by the three most dominant political parties in Wales. Whilst a clear difference through the period is not observed, Labour, who historically hold the most constituencies throughout the country, are often the lowest performers in terms of recycling rates, with LAs held by other parties performing in a very similar fashion (Figure 9). This has probably been caused by several factors. The South Wales Valleys are a group of industrialised peri-urban valleys in South Wales that have suffered profoundly from the decline of heavy industry (Easton, 2013). All Valley classified LAs were held by Labour in this analysis. The so-called “Valleys area” generally underperforms across a range of economic indicators, with 55% of the valley population living in areas where more than 175 per 1,000 of the working population claim benefits, compared to the Welsh average of 33%. There are many indicators for the valleys to be in a larger state of deprivation in comparison to the country (Welsh Assembly Government, n.d.). It is reasonably well-established that recycling rates are lower in poorer areas of the UK (Thomas, 2020).

In addition, the other LAs that are included in the Labour classification for Figure 8 are mostly those who have a larger population density. Those who reside in these areas such as Cardiff and Swansea, including large populations of students, are more likely to live in flats or houses of multiple occupancy, where the percentage of HMOs of the Welsh total are 35.8% and 10.2%, using the estimated values for the most current year available on StatsWales, 2018-19. The inconvenience of properly separating waste within a small liveable area and then carrying waste to a distanced sorting room, which could be several floors away, is a barrier to recycling. Even those who are committed to recycling just need to be housed with an individual who is non-committal to destabilise a recycling regime through contamination (Wales Centre for Public Policy, 2018). We can therefore see why links have been made between deprivation, housing type and life stage against participation in recycling.

Figure 10 show the total waste per person for the averaged highest and lowest earning local authorities in Wales. Given that those who have higher incomes are more likely to reside in a house with reasonable outside space, and low-income households tend to inhabit areas of high density, such as flats or houses of multiple occupancy, it is unsurprising that seasonal variations due to garden waste are evident. Higher earners, with more access to outside space per person, are going to dispose of considerably more organic waste during the summertime. However, the trendlines for both datasets start to converge towards the end of the period. The total waste per person from the lowest earning LAs remains relatively consistent, indicating no change in performance, whilst the total waste per person from the highest earning LAs shows a steady decrease. The reasons for this are unclear, although it is possible that households in the highest earning LAs have started to change (reduce) their consumption behaviour as shifting values, expectations and motivations around culture, community and environment start to have an impact on consumption habits and patterns.

Figure 11 shows the impact of policy changes over time. The step changes, year by year, are steep in the years following the significant initiatives introduced in 2013. The observed improvements continue up to the years of 2016-17, when new incineration infrastructure comes fully online. The gradual increases in recycling rate following the publication of new policy changes, made in the Towards Zero Waste (2013), highlight the time lag between the introduction of this type of policy and creation of infrastructure/services, habitualisation of intended behaviours and resulting outcomes. The WAG’s newest strategy, “Beyond Recycling 2021”, intends to enable an increase in recycling rate by 2025, the target deadline for the intended 70% recycling rate. The strategy ultimately aims to make Wales a world leader in reuse, repair, and manufacturing from recyclable materials - by 2050 it wants to reuse, recycle, or repair everything. It is based on six themes: driving innovation in materials use; upscaling prevention and reuse; building on Wales’s recycling record; investing in infrastructure; enabling community and business action; and

aligning Government levers.

5. CONCLUSIONS

Over the last 15 years, Wales has become a world leader in household waste recycling. A review of historical trends in waste management in Wales from 2006 to 2020 shows that the positive and proactive approach taken by the Welsh Assembly Government has achieved impressive results that contrast starkly with the recycling performance of other UK countries. England's laissez-faire approach realised a paltry 4% increase in recycling rate in the decade prior to 2020, with Scotland also failing to meet its target and Northern Ireland only just meeting it. The WAG's action plans focused on setting statutory targets, reduction of cross-contamination, improving public awareness and recycling facilities, and provision of infrastructure, particularly incineration capacity. In particular, the difference between Wales's progressive, ambitious, joined-up, evidence-and consensus-based and partnership-driven approach to resource management and the vision-free, leadership-free, rather siloed processes that have occurred in England is like the difference between chalk and cheese.

In Wales, household waste disposed annually per person via landfill has very significantly decreased from ~410 kg to <50 kg. Over the same period, the amount of household waste recycled annually per person has increased from ~150 kg to ~310 kg, with a recent increase in incineration with energy recovery to ~135 kg as infrastructure has come online. Recycling rates show a seasonal variation due to increases in garden waste sent for composting in the summer. There are variations in local authority performance across Wales, mainly caused by variations in the number of separate collections; LAs that have a lower number of separate collections show consistently higher recycling rates than those with a higher number, with a sudden change during the Covid-19 pandemic. However, co-mingled collections tend to lead to higher contamination of recyclates that are then not able to be sold for recycling. Deprivation, as indicated by differences in income, also influences total waste arisings and recycling rates.

A plateau of ~65% recycling rate can be observed towards the end of the period, with incineration reaching a rate of >25%. The recycling rate plateaus at exactly the same time as incineration comes on stream, highlighting the phenomenon known as "feeding the beast" and emphasising that improvements to recycling rates can become more difficult when convenient alternative long-term infrastructure is available, even if it is lower in the waste hierarchy.

Whilst the WAG's approach has successfully and quickly reduced waste disposed via landfill, further reductions and improvements to recycling will be more challenging. The WAG has responded to the challenge by publishing "Beyond Recycling 2021", its strategy to make Wales a zero-waste nation by 2050 by developing a full circular economy. The strategy has been designed to make resource efficiency part of Welsh culture and to help the country maximise its economic potential. The WAG's track record shows that it tends to deliver on its waste-related plans and suggests it has the best chance of any of the UK's four countries of achieving its aims.

ACKNOWLEDGEMENTS

Grateful thanks to staff at WasteDataFow.

REFERENCES

AEA (n.d.). *Methane GHG Inventory summary Factsheet*. [online] Available at: https://assets.publishing.service.gov.uk/government/uploads/system/uploads/attachment_data/file/48424/5556-

- [methane-factsheet.pdf](#) [Accessed 19 February 2022].
- Anshassi, M., Sackles, H. and Townsend, T. (2021). A review of LCA assumptions impacting whether landfilling or incineration results in less greenhouse gas emissions. *Resources, Conservation and Recycling*, 174, 105810.
- Audit Wales (2021). *Review of Waste Services – Carmarthenshire County Council*. [online] Available at: https://www.wao.gov.uk/sites/default/files/publications/carms_waste.pdf [Accessed 24 February 2022].
- Barr, D., Levy, R., Scheepers, C. and Tily, H. (2013). Random effects structure for confirmatory hypothesis testing: Keep it maximal. *Journal of Memory and Language*, 68(3), 255-278.
- Bateman, K. (2022). *Here's how much waste people in the EU produced in 2020*. [online] World Economic Forum. Available at: <https://www.weforum.org/agenda/2022/02/municipal-waste-european-union-eurostat-circular-economy/> [Accessed 24 February 2022].
- Bees, A. and Williams, I. (2017). Explaining the differences in household food waste collection and treatment provisions between local authorities in England and Wales. *Waste Management*, 70, 222-235.
- Bogner, J., Spokas, K. and Chanton, J. (2011). Seasonal Greenhouse Gas Emissions (Methane, Carbon Dioxide, Nitrous Oxide) from Engineered Landfills: Daily, Intermediate, and Final California Cover Soils. *Journal of Environmental Quality*, 40(3), 1010-1020.
- Boldero, J. (1995). The Prediction of Household Recycling of Newspapers: The Role of Attitudes, Intentions, and Situational Factors¹. *Journal of Applied Social Psychology*, 25(5), 440-462.
- Bravo, E. (2021). *The German recycling system: the world's best recycling country*. [online] Tomorrow.city. Available at: <https://tomorrow.city/a/german-recycling-system> [Accessed 24 February 2022].
- Brock, T. (2020). *Pareto Principle Definition*. [online] Investopedia. Available at: <https://www.investopedia.com/terms/p/paretoprinciple.asp> [Accessed 24 February 2022].
- Broughton, D. (1998). *Plaid Cymru | History, Policy, & Structure*. [online] Encyclopedia Britannica. Available at: <https://www.britannica.com/topic/Plaid-Cymru> [Accessed 16 February 2022].
- Burnley, S. (2007). A review of municipal solid waste composition in the United Kingdom. *Waste Management*, 27(10), 1274-1285.
- Business Wales (2021). *Recycle Week 2021*. [online] Available at: <https://businesswales.gov.wales/news-and-blogs/news/recycle-week-2021> [Accessed 26 February 2022].
- Carpenter, D. (2022). *How to Set Long Term Goals and Achieve Success*. [online] Lifehack. Available at: <https://www.lifehack.org/788859/long-term-goals> [Accessed 25 February 2022].
- Clark, D. (2021). GDP UK, by country 2019 | Statista. [online] Statista. Available at: <https://www.statista.com/statistics/1003902/uk-gdp-by-country-2018/> [Accessed 2 December 2021].
- Danthurebandara, M., Van Passel, S., Nelson, D., Tielemans, Y. and Van Acker, K. (2012). Environmental and Socio-economic Impacts of Landfills. Available at: https://www.researchgate.net/profile/Dirk-Nelen/publication/278738702_Environmental_and_socio-economic_impacts_of_landfills/links/58ff795345851565029f290a/Environmental-and-socio-economic-impacts-of-landfills.pdf [Accessed 13 February 2022].
- Department for Environment, Food and Affairs (2021). UK Statistics on Waste. Government Statistical Service.
- Department for Environment, Food and Rural Affairs (2021). *UK Statistics on Waste*.
- Diaz-Barriga-Fernandez, A., Santibañez-Aguilar, J., Radwan, N., Nápoles-Rivera, F., El-Halwagi, M. and Ponce-Ortega, J. (2018). Strategic Planning for Managing Municipal Solid Wastes with Consideration of Multiple Stakeholders. *ACS Sustainable Chemistry & Engineering*, 5(11), 10744-10762.
- Davis, G., Phillips, P.S., Read, A.D., Iida, Y. (2006). Demonstrating the need for the development of internal research capacity: Understanding recycling participation using the theory of planned behaviour in West Oxfordshire, UK. *Resources, Conservation and Recycling*, 46, 115–127.
- Easton, M. (2013). The unbearable sadness of the Welsh valleys. Available at: <https://www.bbc.co.uk/news/magazine-23028078> [Accessed 24 February 2022].
- Eleri, C. (2021). *Beyond Recycling*. [Radio] BBC Sounds. Available at: <https://www.bbc.co.uk/sounds/play/m001128n> [Accessed 25 February 2022].
- Europarl.europa.eu (2018). *EU waste management*. [online] Available at:

<https://www.europarl.europa.eu/news/en/headlines/society/20180328STO00751/eu-waste-management-infographic-with-facts-and-figures> [Accessed 24 February 2022].

European Parliament, 2015. *Understanding waste streams*.

Farmer, T. D.; Shaw, P.J. and Williams, I.D. (2015). Destined for indecision? A critical analysis of waste management practices in England from 1996 to 2013. *Waste Management*, 39, 266-276.

Gellynck, X., Jacobsen, R. and Verhelst, P. (2011). Identifying the key factors in increasing recycling and reducing residual household waste: A case study of the Flemish region of Belgium. *Journal of Environmental Management*, 92(10), 2683-2690.

Goddard, H. C. (1995). The benefits and costs of alternative solid waste management policies. *Resources, Conservation and Recycling*, 13(3):183-213.

Gray, A. (2017). Germany recycles more than any other country. [online] World Economic Forum. Available at: <https://www.weforum.org/agenda/2017/12/germany-recycles-more-than-any-other-country/> [Accessed 2 December 2021].

Grosso, M., Motta, A., & Rigamonti, L. (2010). Efficiency of energy recovery from waste incineration, in the light of the new Waste Framework Directive. *Waste Management*, 30(7):1238-1243.

Hahladakis, J., Purnell, P., Iacovidou, E., Velis, C. and Atseyinku, M. (2018). Post-consumer plastic packaging waste in England: Assessing the yield of multiple collection-recycling schemes. *Waste Management*, 75, 149-159.

Harrabin, R. (2018). *Should we burn or bury waste plastic?*. [online] BBC News. Available at: <https://www.bbc.co.uk/news/science-environment-43120041> [Accessed 25 February 2022].

Isustainrecycling.com (2018). *Becoming A Zero Waste Company | iSustain Recycling*. [online] Available at: <https://isustainrecycling.com/becoming-a-zero-waste-company/> [Accessed 24 February 2022].

Kaza, S., Bhada-Tata, P., Ionkova, K., Van Woerden, F. and Yao, L. (n.d). What a waste 2.0.

Kaza, S., Bhada-Tata, P., Ionkova, K., Van Woerden, F. and Yao, L. (n.d.). *What a waste 2.0*. World Bank Group.

Kim, B., Kim, S. and Sahoo, S. (2006). Waste collection vehicle routing problem with time windows. *Computers & Operations Research*, 33(12), 3624-3642.

Latham & Watkins LLP (2018). *The EU Adopts Four Directives to Solidify Europe's Leading Position in Waste Management*. [online] Environment, Land & Resources. Available at: <https://www.globalelr.com/2018/07/the-eu-adopts-four-directives-to-solidify-europes-leading-position-in-waste-management/> [Accessed 24 February 2022].

Laville, S. (2017). *Wales is second best household waste recycler in the world*. [online] the Guardian. Available at: <https://www.theguardian.com/environment/2017/dec/11/wales-household-waste-recycling-england> [Accessed 24 February 2022].

Li, M., Verburg, P. and van Vliet, J. (2022). Global trends and local variations in land take per person. *Landscape and Urban Planning*, 218, 104308.

Mayor, L. (2019). *Recycling: Why do collections vary around Wales?*. [online] BBC News. Available at: <https://www.bbc.co.uk/news/uk-wales-50262067> [Accessed 26 November 2021].

Ogleby, G. (2017). *Wales continues to lead UK in recycling, announces circular economy fund*. [online] www.euractiv.com. Available at: <https://www.euractiv.com/section/energy-environment/news/wales-continues-to-lead-uk-in-recycling-announces-circular-economy-fund/> [Accessed 25 February 2022].

Papargyropoulou, E., Lozano, R., K. Steinberger, J., Wright, N. and Ujang, Z. (2014). The food waste hierarchy as a framework for the management of food surplus and food waste. *Journal of Cleaner Production*, 76, 106-115.

Papineschi, J., Jones, P. and Gillies, R. (2017). Recycling – Who Really Leads the World? - Eunomia. [online] Eunomia. Available at: <https://www.eunomia.co.uk/reports-tools/recycling-who-really-leads-the-world/> [Accessed 1 December 2021].

Parfitt, J., Lovett, A. and Sünnerberg, G. (2001). A classification of local authority waste collection and recycling strategies in England and Wales. *Resources, Conservation and Recycling*, 32(3-4), 239-257.

Parker, L. (2020). *U.S. generates more plastic trash than any other nation, report finds*. [online] Environment. Available at: <https://www.nationalgeographic.com/environment/article/us-plastic-pollution#:~:text=In%202016%2C%20more%20than%20half,properly%20manage%20and%20process%20it.>

- [Accessed 19 February 2022].
- Parker, T. (2020). From Austria to Wales: The five best recycling countries in the world. [online] NS Packaging. Available at: <https://www.nspackaging.com/analysis/best-recycling-countries/> [Accessed 1 December 2021].
- Perchard, E. (2016). *Merthyr completes remarkable recycling turnaround as Wales hits 60 per cent rate*. [online] Resource Magazine. Available at: <https://resource.co/article/merthyr-completes-remarkable-recycling-turnaround-wales-hits-60-cent-rate-11324#:~:text=In%20June%202015%2C%20the%20method,into%20separate%20containers%20by%20residents> [Accessed 14 February 2022].
- Perrin, D. and Barton, J. (2001). Issues associated with transforming household attitudes and opinions into materials recovery: a review of two kerbside recycling schemes. *Resources, Conservation and Recycling*, 33(1), 61-74.
- Pickles, E. (2010). We'll boost recycling with a gentle nudge. Available at: <https://www.theguardian.com/commentisfree/cif-green/2010/jun/08/recycling-reward-scheme> [Accessed 4 May 2022].
- Radwan, H., Jones, E. and Minoli, D. (2011). Solid waste management in small hotels: a comparison of green and non-green small hotels in Wales. *Journal of Sustainable Tourism*, 20(4), 533-550.
- Read, A.D. (1999). "A weekly door-step recycling collection, I had no idea we could!" – Overcoming the local barriers to participation. *Resources, Conservation and Recycling*, 26, 217–249.
- Robinson, G. and Read, A. (2005). Recycling behaviour in a London Borough: Results from large-scale household surveys. *Resources, Conservation and Recycling*, 45(1), pp.70-83.
- Rutherford, R. and Spence, L. (1998). *Small businesses and the perceived limits to responsibility: Environmental issues*. Durham Paper presented at Institute of Small Business Affairs, National Small Firms Policy and Research Conference [\[Google Scholar\]](#)
- Rutherford, R., Blackburn, R. and Spence, L. (2000). Environmental management and the small firm. *International Journal of Entrepreneurial Behavior & Research*, 6(6), 310-326.
- Schanes, K., Dobernig, K. and Gözet, B. (2018). Food waste matters - A systematic review of household food waste practices and their policy implications. *Journal of Cleaner Production*, 182, 978-991.
- Shaw, P.J., Lyas, J.K., Hudson, M.D. (2006). Quantitative analysis of recyclable materials composition: Tools to support decision making in kerbside recycling. *Resources, Conservation and Recycling*, 48, 263–279.
- Singh, J., Laurenti, R., Sinha, R. and Frostell, B. (2014). Progress and challenges to the global waste management system. *Waste Management & Research*, 32(9), 800-812.
- Spencer, C. (2021). What happens to recycling when it leaves your house? Available at: <https://www.bbc.co.uk/news/uk-wales-56851025> [Accessed 3 May 2022].
- Statistics for Wales (2015). *Local authority municipal waste management report for Wales, 2014-15*. [online] Available at: <https://gov.wales/sites/default/files/statistics-and-research/2019-01/151008-local-authority-municipal-waste-management-2014-15-en.pdf> [Accessed 22 February 2022].
- Statistics for Wales (2020). *Local Authority Municipal Waste Management, 2019-20*. [online] Available at: <https://gov.wales/sites/default/files/statistics-and-research/2020-11/local-authority-municipal-waste-management-april-2019-march-2020-628.pdf> [Accessed 22 February 2022].
- Steffen, A. (2019). *How Ljubljana Became The First Zero Waste Capital In Europe*. [online] Intelligent Living. Available at: <https://www.intelligentliving.co/ljubljana-zero-waste/#:~:text=Ljubljana%2C%20the%20capital%20of%20Slovenia,will%20be%20at%20least%2075%25>. [Accessed 25 February 2022].
- Teixeira, J., Antunes, A. and de Sousa, J. (2004). Recyclable waste collection planning—a case study. *European Journal of Operational Research*, 158(3), 543-554.
- The National Assembly for Wales (2008). *Waste Management in Wales*. pp.25-31.
- Thomas, T. (2020). Recycling rates lower in England's poorest areas. Available at: <https://www.theguardian.com/environment/2020/aug/31/recycling-rates-significantly-lower-england-poorest-areas-report> [Accessed 24 February 2022].
- Timlett, R. and Williams, I. (2009). The impact of transient populations on recycling behaviour in a densely populated

- urban environment. *Resources, Conservation and Recycling*, 53(9), 498-506.
- Timlett, R., Williams, I.D. (2011). The ISB model (infrastructure, service, behaviour): A tool for waste practitioners. *Waste Management*, 31, 1381–1392.
- Tiseo, I. (2022). *Topic: Waste generation worldwide*. [online] Statista. Available at: <https://www.statista.com/topics/4983/waste-generation-worldwide/#dossierKeyfigures> [Accessed 24 February 2022].
- Tiseo, I. (2022). *Topic: Waste generation worldwide*. [online] Statista. Available at: https://www.statista.com/topics/4983/waste-generation-worldwide/#topicHeader_wrapper [Accessed 25 February 2022].
- Tonglet, M., Phillips, P. and Read, A. (2004). Using the Theory of Planned Behaviour to investigate the determinants of recycling behaviour: a case study from Brixworth, UK. *Resources, Conservation and Recycling*, 41(3), 191-214.
- Torres, I. (n.d.). *The difference between Circular economy and recycling — Økocentrisk*. [online] Økocentrisk. Available at: <https://www.okocentrisk.dk/blog/the-difference-between-circular-economy-and-recycling> [Accessed 24 February 2022].
- Turner, D., Williams, I. and Kemp, S. (2015). Greenhouse gas emission factors for recycling of source-segregated waste materials. *Resources, Conservation and Recycling*, 105, 86-197.
- UNEP, (2021). *Methane emissions are driving climate change. Here's how to reduce them..* [online] Available at: <https://www.unep.org/news-and-stories/story/methane-emissions-are-driving-climate-change-heres-how-reduce-them> [Accessed 22 February 2022].
- Vasarhelyi, K. (2021). *The Climate Impact of Single Use Plastics*. [online] Environmental Center. Available at: <https://www.colorado.edu/ecenter/2021/02/25/climate-impact-single-use-plastics#:~:text=The%20refinement%20of%20plastics%20emits,landfill%20size%20and%20these%20emissions> [Accessed 21 February 2022].
- Vasarhelyi, K. (2021). *The Hidden Damage of Landfills*. [online] Environmental Center. Available at: <https://www.colorado.edu/ecenter/2021/04/15/hidden-damage-landfills#:~:text=Smaller%20landfills%20depress%20land%20values,landfills%20and%20hazardous%20waste%20sites> [Accessed 26 February 2022].
- Viridor (2021). *Cardiff ERF*. [online] Available at: <https://www.viridor.co.uk/energy/energy-recovery-facilities/cardiff-erf/> [Accessed 24 February 2022].
- Wales Centre for Public Policy (2018). *Increasing household waste recycling with behavioural science*. [online] Available at: <https://www.wcpp.org.uk/wp-content/uploads/2018/09/180830-English-WCPP-BCW-workshop-report-PUBLICATION.pdf> [Accessed 14 February 2022].
- WasteWatch (2005). *Providing and improving recycling facilities for multi-occupancy housing*. London, UK: Defra; 2005.
- Welsh Assembly Government (2009) *One Wales: One Planet*. [online] Available at: <https://www.bridgend.gov.uk/media/1505/wd32.pdf> [Accessed 13 February 2022].
- Welsh Assembly Government (2015). *Towards Zero Waste*.
- Welsh Assembly Government (2021). *Beyond Recycling*. Cardiff.
- Welsh Assembly Government (n.d.). *Our Valleys, Our Future Evidence Paper*. [online] Available at: <https://gov.wales/sites/default/files/publications/2018-05/valleys-taskforce-summary-of-evidence.pdf> [Accessed 20 February 2022].
- Welsh Government (2014). *Statutory Guidance on the Separate Collection of Waste Paper, Metal, Plastic and Glass*.
- Welsh Government (2020). *How Wales became a world leader in recycling*. [online] Available at: <https://gov.wales/how-wales-became-world-leader-recycling> [Accessed 3 December 2021].
- Welsh Government (2021). *Wales aims to become world number one recycler as it announces Circular Economy strategy*.
- Whalen, S., Reeburgh, W. and Sandbeck, K. (1990). Rapid Methane Oxidation in a Landfill Cover Soil. *Applied and Environmental Microbiology*, 56(11), 3405-3411.

- Williams, I., 2021. Social, Cultural and Structural Influences on Household Waste Recycling.
- Wilson, C. and Williams, I. (2007). Kerbside collection: A case study from the north-west of England. *Resources, Conservation and Recycling*, 52(2), pp.381-394.
- Wood, C. (2015). *Challenging recycling targets lead to bin collection changes*. [online] BBC News. Available at: <https://www.bbc.co.uk/news/uk-wales-33651705> [Accessed 15 February 2022].
- World Bank (2018). *Global Waste to Grow by 70 Percent by 2050 Unless Urgent Action is Taken: World Bank Report*. [online] Available at: <https://www.worldbank.org/en/news/press-release/2018/09/20/global-waste-to-grow-by-70-percent-by-2050-unless-urgent-action-is-taken-world-bank-report> [Accessed 25 February 2022].
- WRAP (2010). *Environmental benefits of recycling – 2010 update*. [online] Available at: <https://wrap.org.uk/sites/default/files/2021-02/WRAP-environmental-benefits-recycling-2010-update.pdf> [Accessed 28 February 2022].
- Yahia, E., Carrillo-López, A., MaldaBarrera, G., Suzán-Azpiri, H. and Queijeiro Bolaños, M. (2019). *Postharvest physiology and biochemistry of fruits and vegetables*.
- Zhang, C., Xu, T., Feng, H. and Chen, S. (2019). Greenhouse Gas Emissions from Landfills: A Review and Bibliometric Analysis. *Sustainability*, 11(8), 2282.

RESULTS: TABLES AND FIGURES

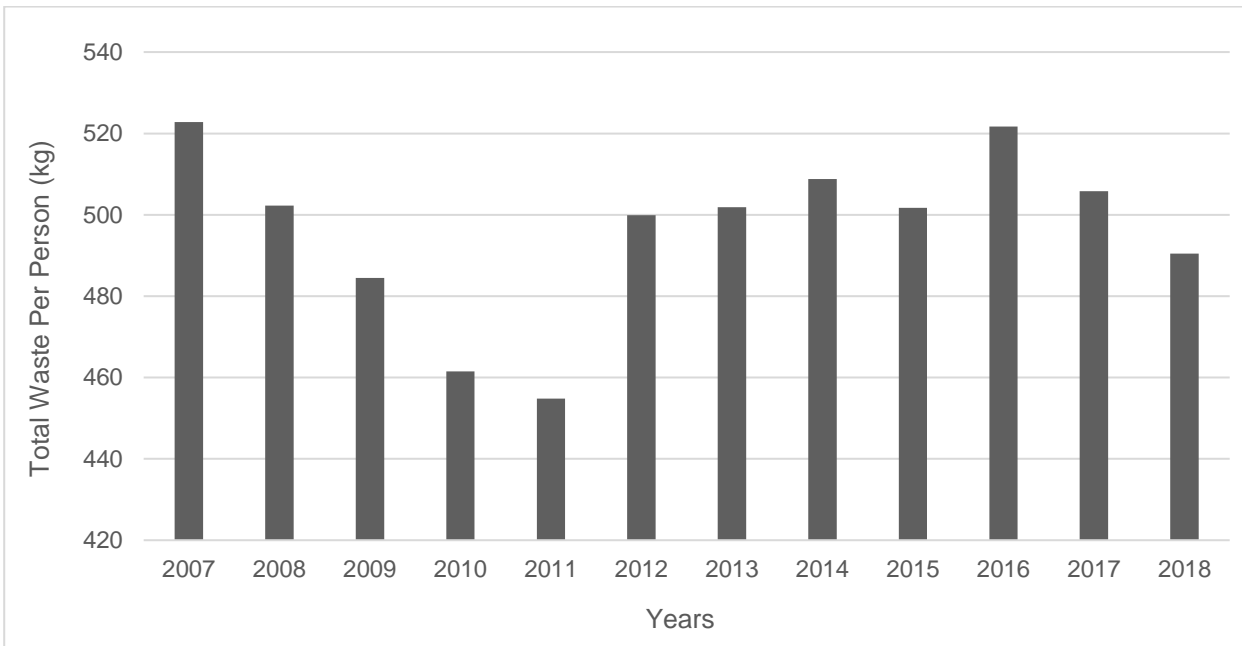


Figure 1. Total yearly municipal waste produced per person (kg) – Welsh average. Source: WasteDataFlow and StatsWales.

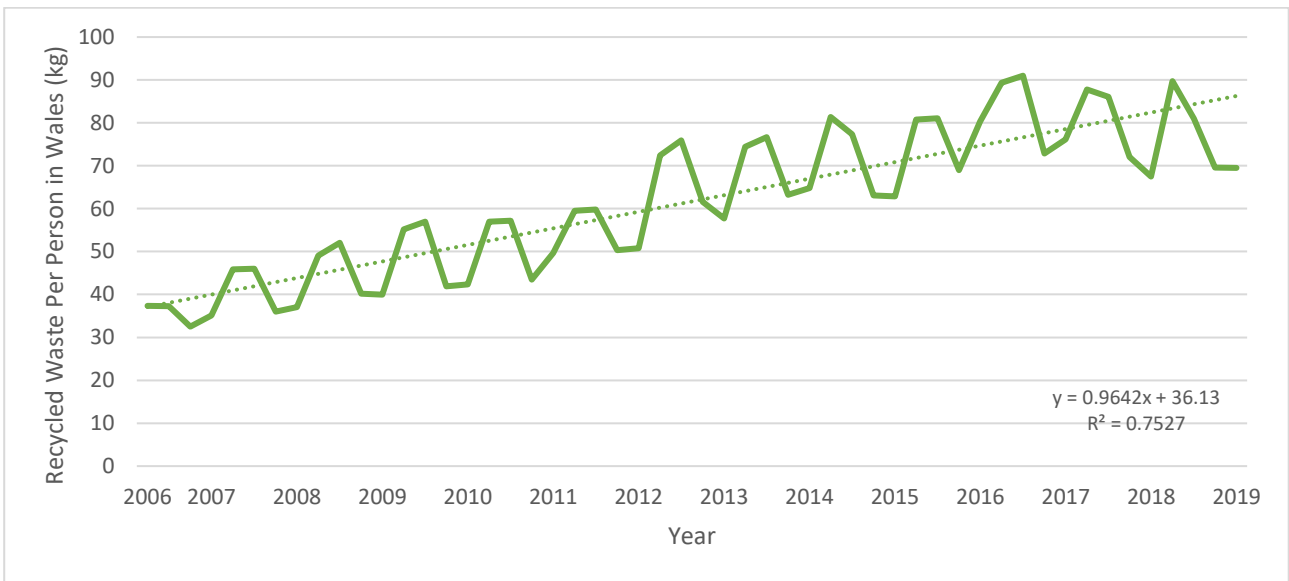


Figure 2. Total recycled waste per person (kg) per quarter - Welsh qverage. Source: WasteDataFlow and StatsWales.

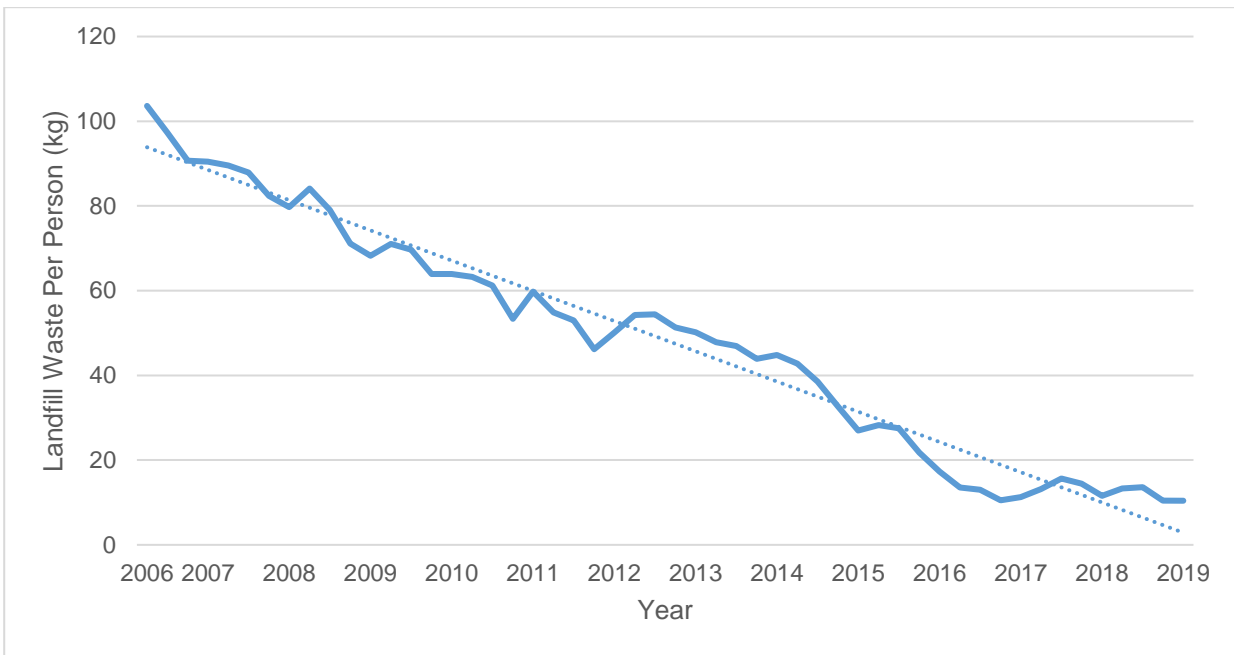


Figure 3. Total landfilled waste per person (kg) per quarter - Welsh average. Source: WasteDataFlow and StatsWales.

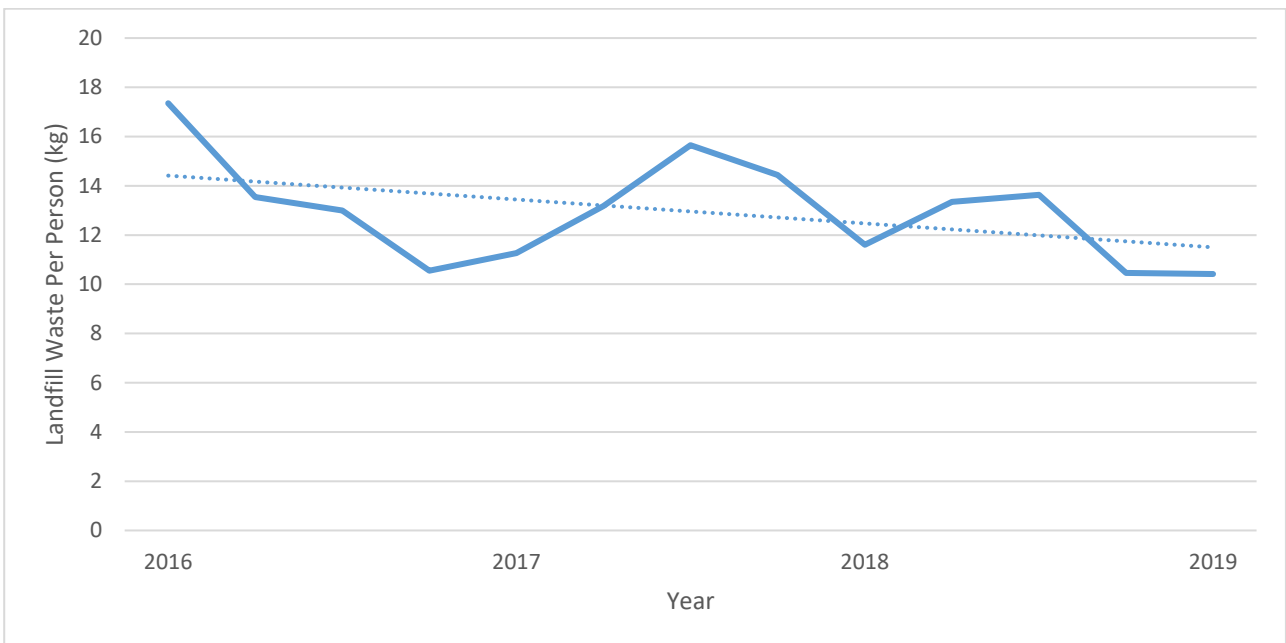


Figure 4. Total landfilled waste per person (kg) per quarter - Welsh Average. Source: WasteDataFlow and StatsWales.

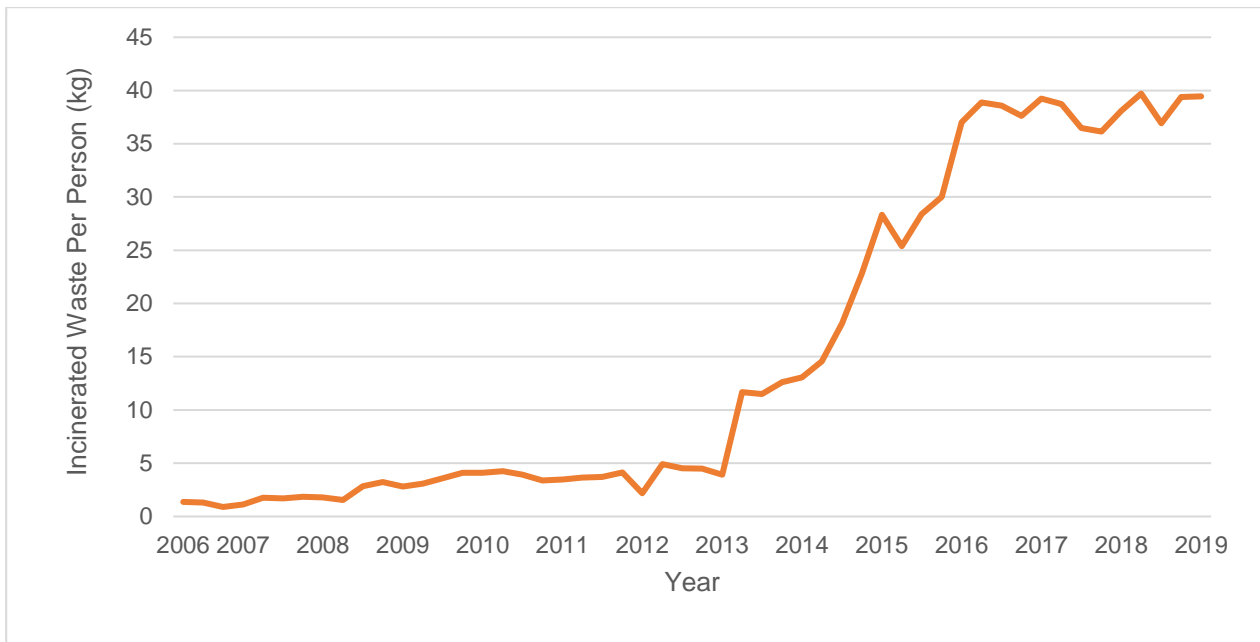


Figure 5. Total incinerated waste per person (kg) per quarter - Welsh average. Source: WasteDataFlow and StatsWales.

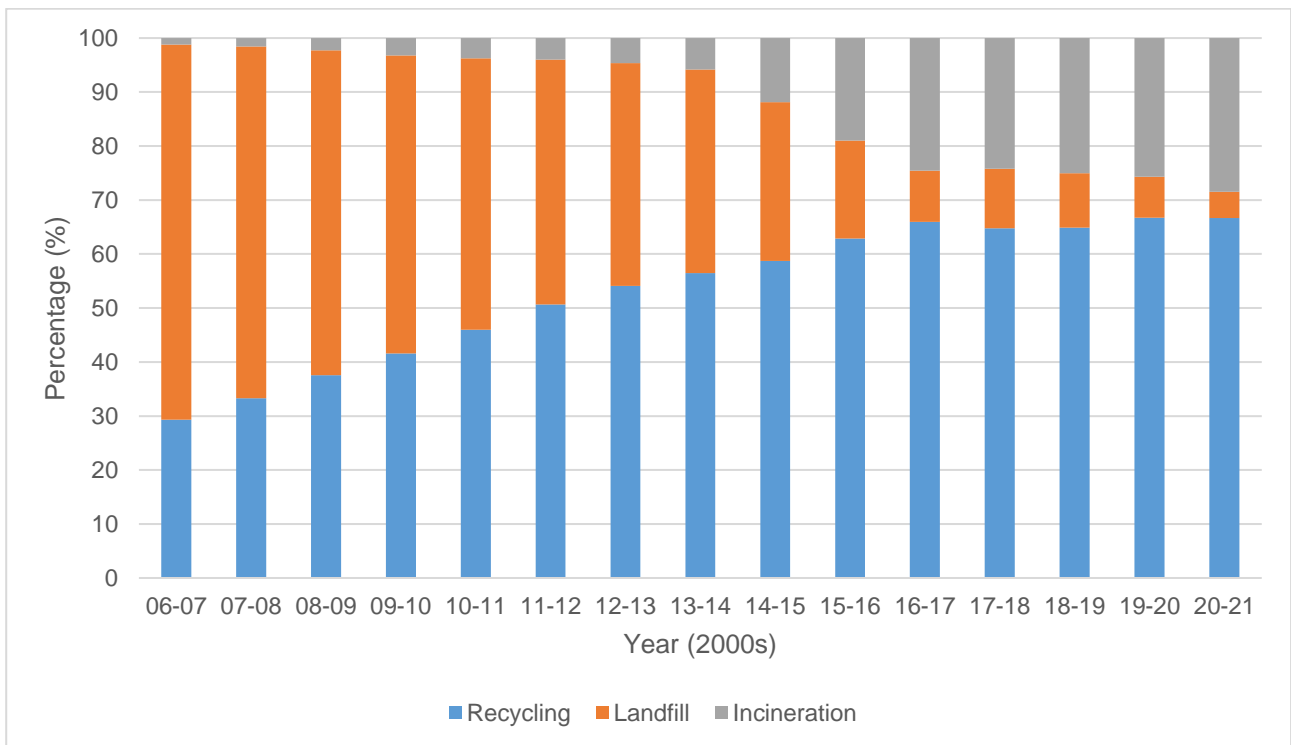


Figure 6. Trends in waste treatment for Wales – Source: WasteDataFlow.

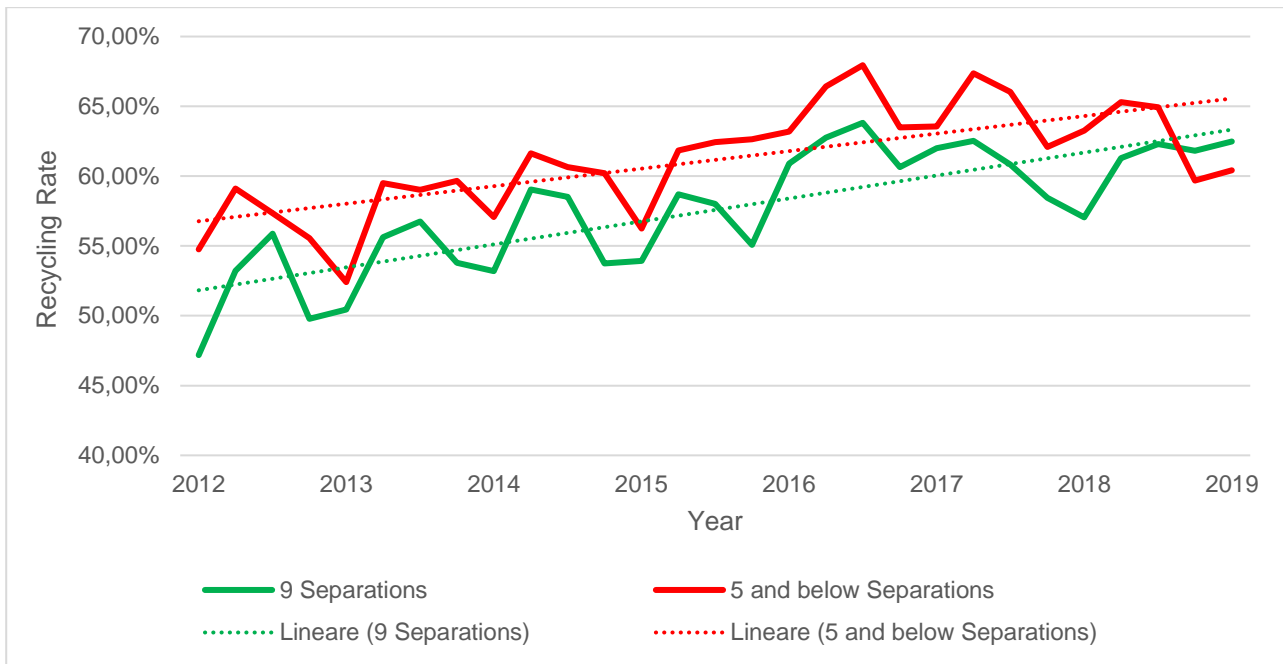


Figure 7. Total recycled waste of local authorities (LAs) with the most and least separated collection methods of kerbside waste per quarter. Source: WasteDataFlow and each LA website.

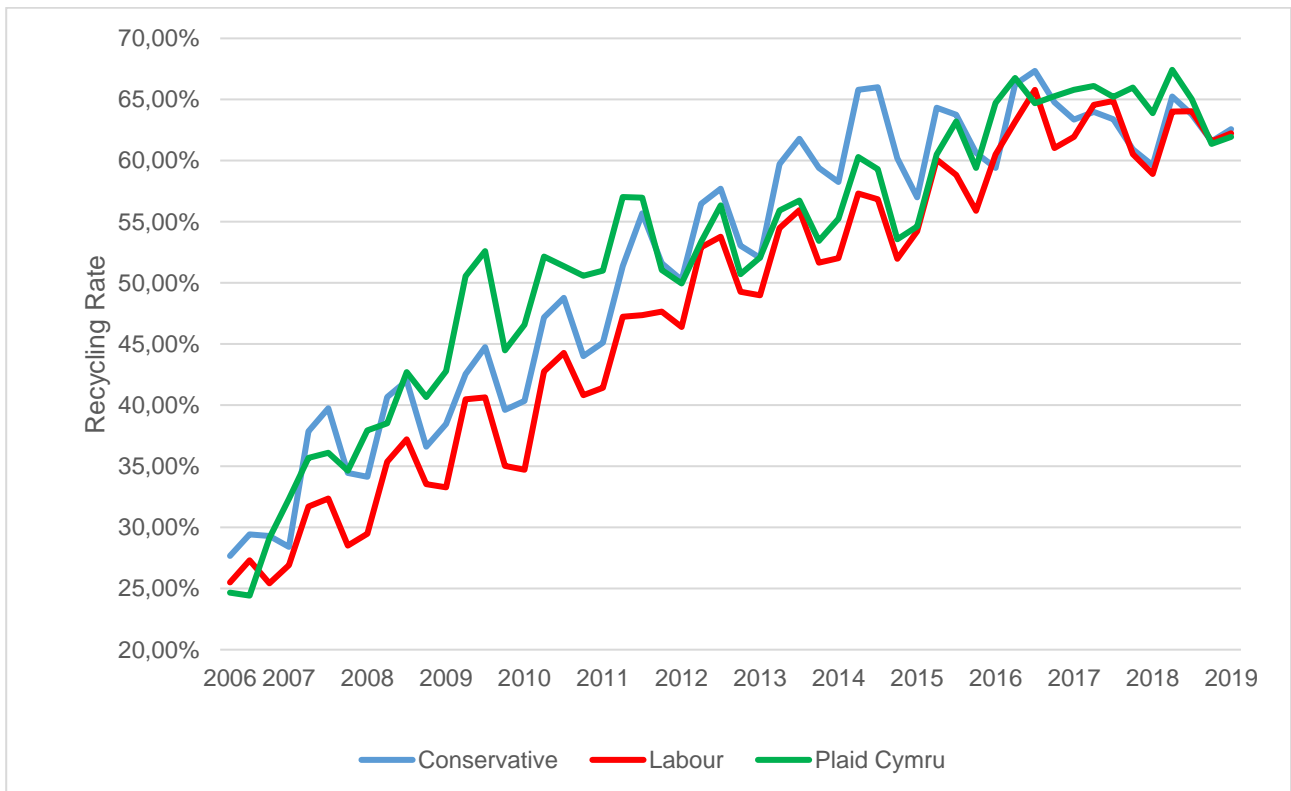


Figure 8. Recycling rate for local authorities (LAs) categorised by majority of election wins per political party. Source: WasteDataFlow.

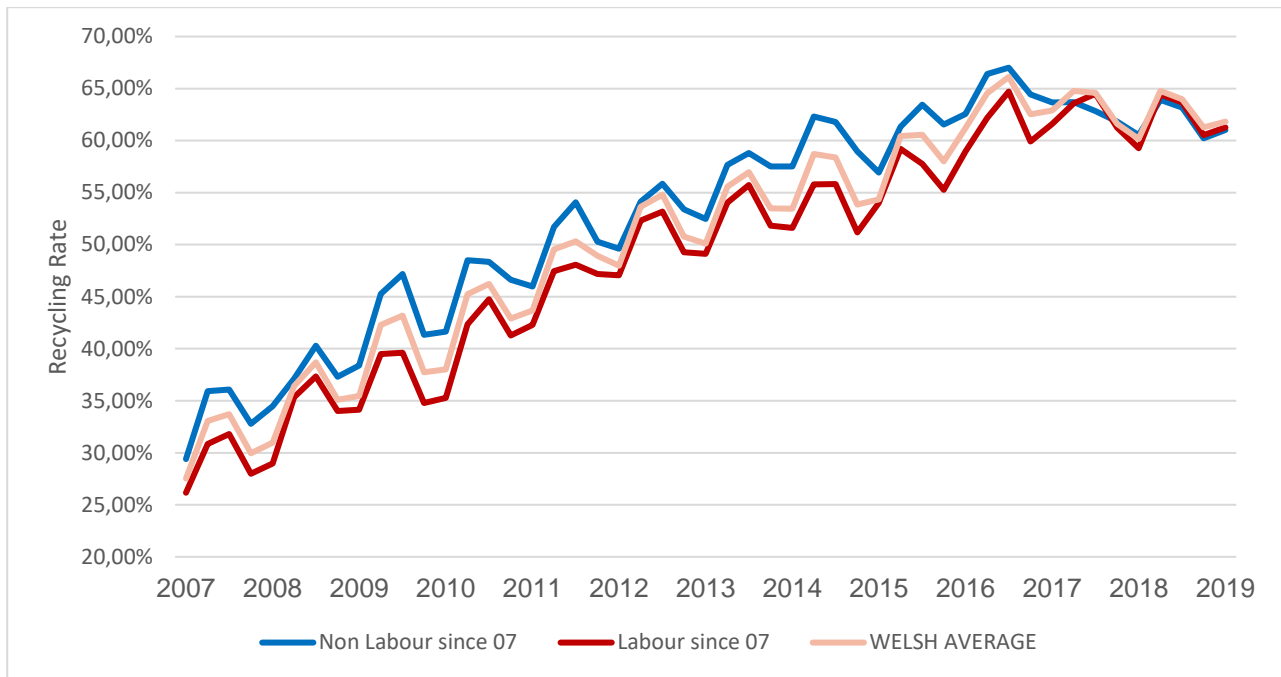


Figure 9. Recycling rate of local authorities (LAs) that have/have not been held by the Labour Party since 2007. Source: WasteDataFlow.

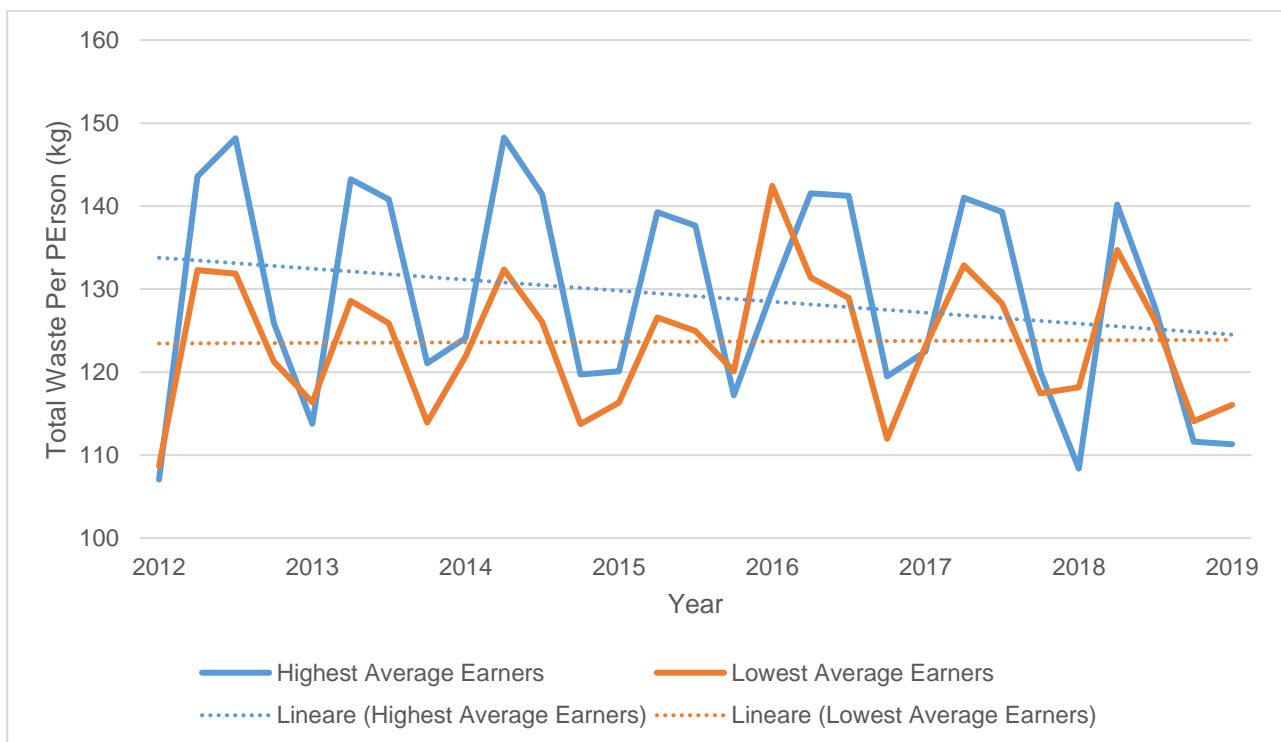


Figure 10. Total waste per person for the averaged highest and lowest earning local authorities in Wales. Source: WasteDataFlow and StatsWales.

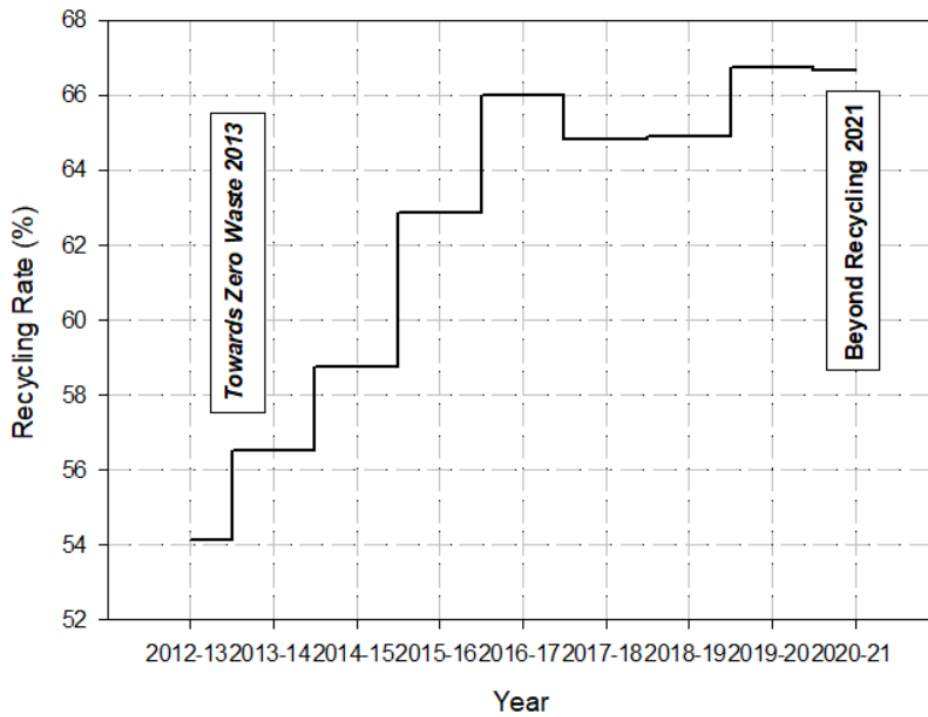


Figure 11. The impact of recent policy changes on recycling rate - Source: WasteDataFlow and Government Publications.

Table 1: Variation in collection methods for each Welsh local authority (LA). Source: each LA website.

Legend: Each coloured spot relates to a new separate collection, if two categories have the same colour spot they are collected together. Black circles indicate that items can be recycled separately within the LA but not at the kerbside

Column	General	General Recycling	Food	Garden	Glass	ANP (incontiner e)	Paper	Plastic	Textiles	Electroni	Metal Packagin	Cardboar	Aerosols	Batteries	TOTAL #	Weeks between Black Bag Collection
Carmarthenshire County C	●	X	●	●	○	X	●	●	○	○	●	●	●	○	4	2
Denbighshire County Coun	●	X	●	●	●	X	●	●	X	○	○	○	○	○	4	3
Caerphilly CBC	●	X	●	●	●	●	●	●	X	○	○	○	○	X	5	2
Cardiff County Council	●	X	●	●	●	●	●	●	○	○	○	○	○	○	6	2
City and County of Swans	●	X	●	●	●	○	●	●	○	○	○	○	○	○	6	2
Rhondda Cynon Taff CBC	●	●	●	●	●	●	●	●	○	○	○	○	○	○	6	2
Torfaen CBC	●	●	●	●	●	●	●	●	○	○	○	○	○	○	6	2
Powys County Council	●	X	●	●	●	○	●	●	○	○	○	○	○	○	6	3
Ceredigion County Council	●	X	●	●	●	●	●	●	○	○	○	○	○	○	6	2,3
Monmouthshire CC	●	X	●	●	●	●	●	●	○	○	○	○	○	○	7	2
Newport City Council	●	X	●	●	●	●	●	●	○	○	○	○	○	○	7	2
Wrexham CBC	●	X	●	●	●	X	●	●	○	○	○	○	○	○	7	2
Bridgend CBC	●	X	●	●	●	●	●	●	○	○	○	○	○	○	8	2
Flintshire County Council	●	X	●	●	●	●	●	●	○	○	○	○	○	○	8	2
Neath Port Talbot CBC	●	X	●	●	●	X	●	●	○	○	○	○	○	○	8	2
Vale of Glamorgan Council	●	X	●	●	●	●	●	●	○	○	○	○	○	○	8	2
Gwynedd Council	●	●	●	●	●	●	●	●	○	○	○	○	○	○	8	3
Isle of Anglesey CC	●	X	●	●	●	●	●	●	○	○	○	○	○	○	8	3
Blaenau Gwent CBC	●	X	●	●	●	●	●	●	○	○	○	○	○	○	9	3
Merthyr Tydfil CBC	●	X	●	●	●	X	●	●	○	○	○	○	○	○	9	3
Pembrokeshire County Co	●	X	●	●	●	●	●	●	○	○	○	○	○	○	9	3
Conwy CBC	●	X	●	●	●	X	●	●	○	○	○	○	○	○	9	4 since 2018

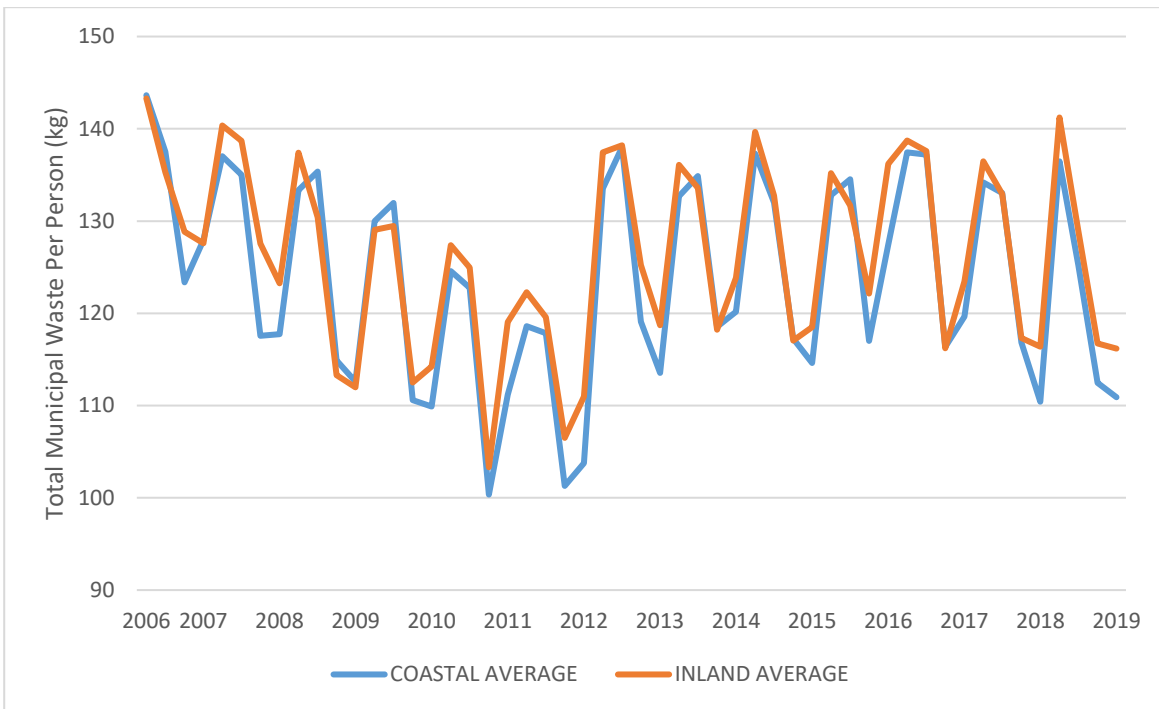


Figure 12. Total municipal waste per person for coastal and rural local authorities in Wales per quarter. Source WasteDataFlow.

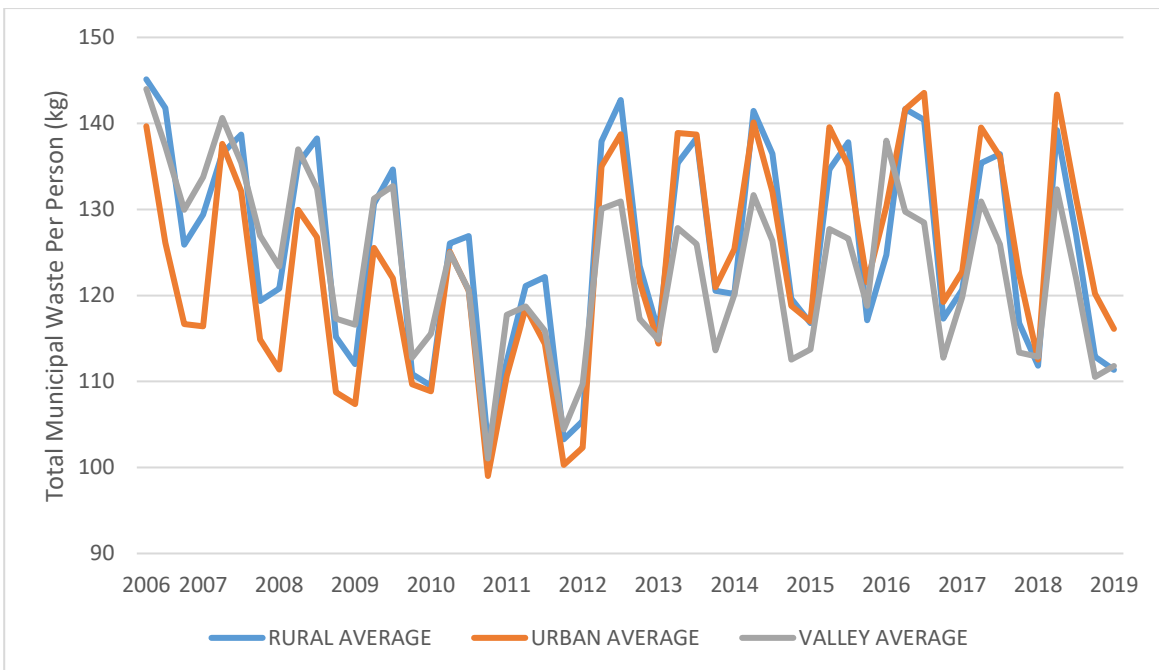


Figure 13. Total municipal waste per person for rural/urban/valley local authorities in Wales per quarter. Source WasteDataFlow.

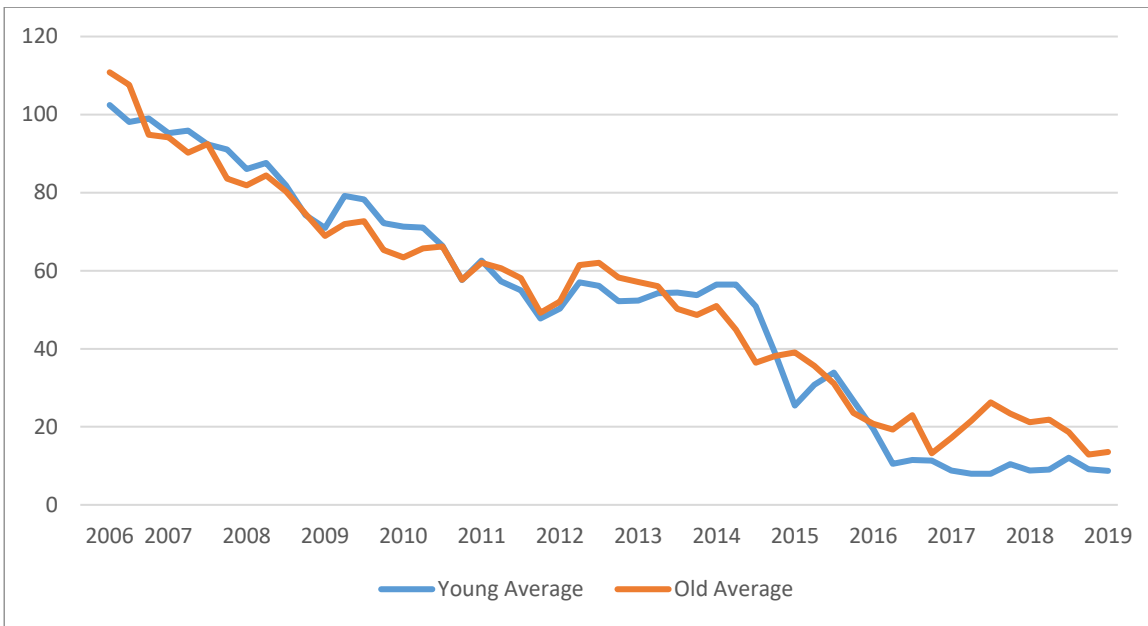


Figure 14. Total landfill waste (kg) per person by average age in the youngest and oldest local authorities in Wales – quarterly. Source: WasteDataFlow.

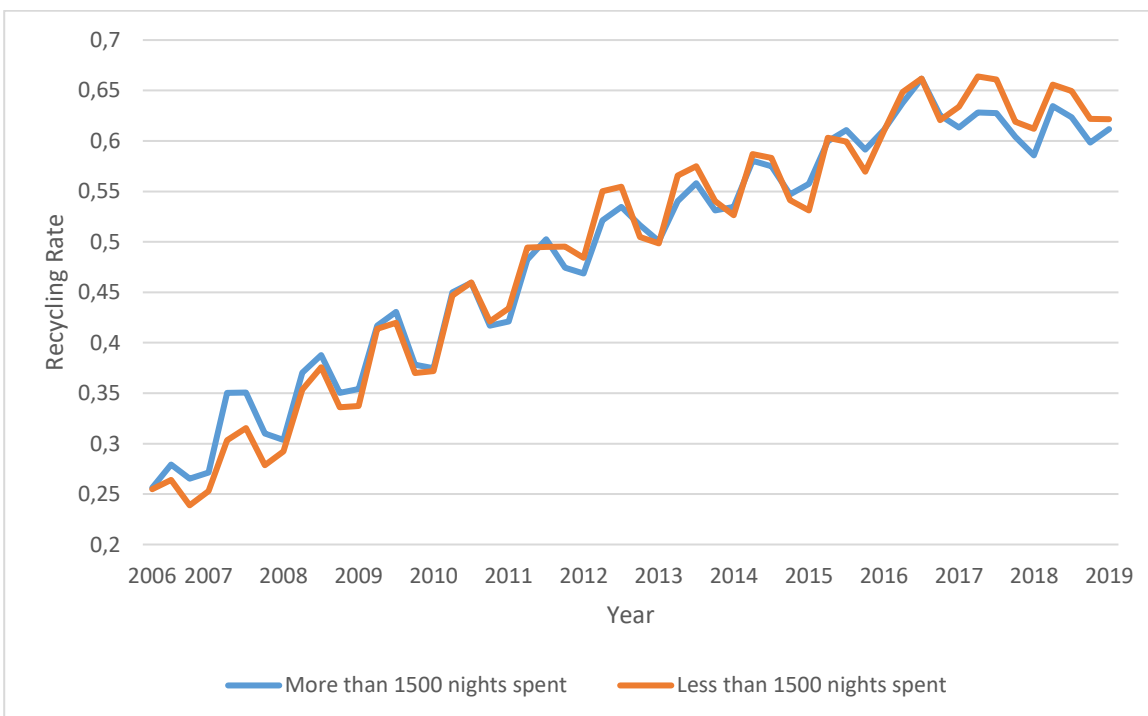


Figure 15. Average recycling rate for local authorities with more/less than 1500 nights spent in by international travellers per year. Source: WasteDataFlow and the Tourism Profile.

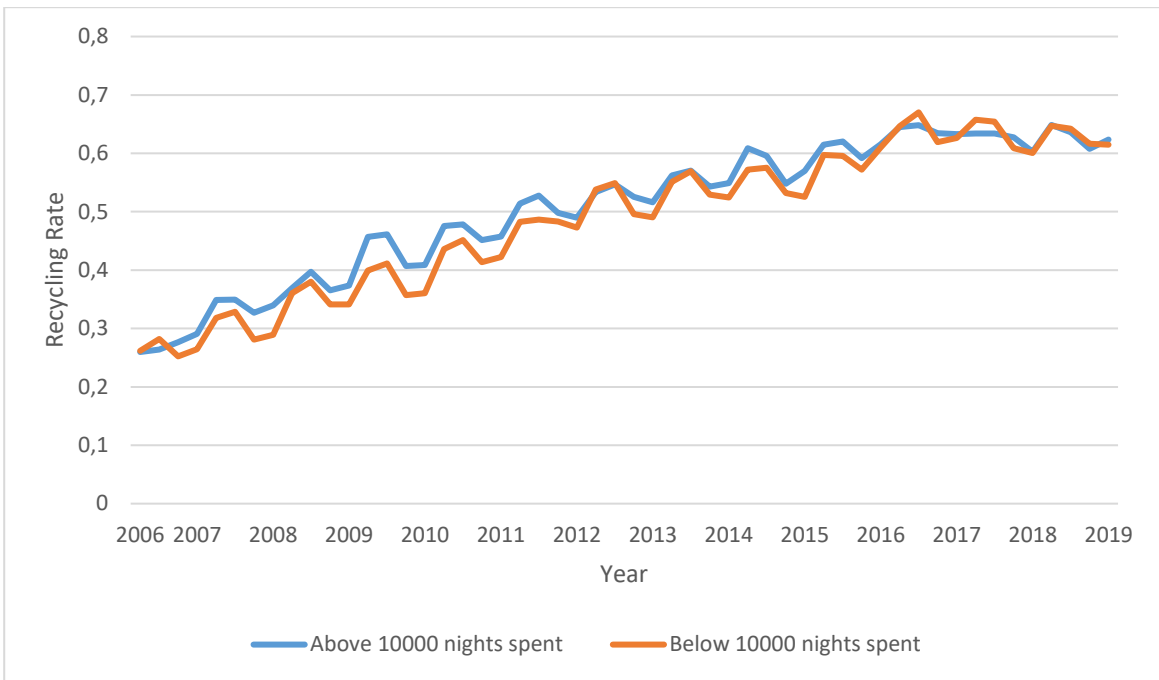


Figure 16. Average recycling rate for local authorities with more/less than 10000 nights spent in by domestic travellers per year. Source: WasteDataFlow and the Tourism Profile.

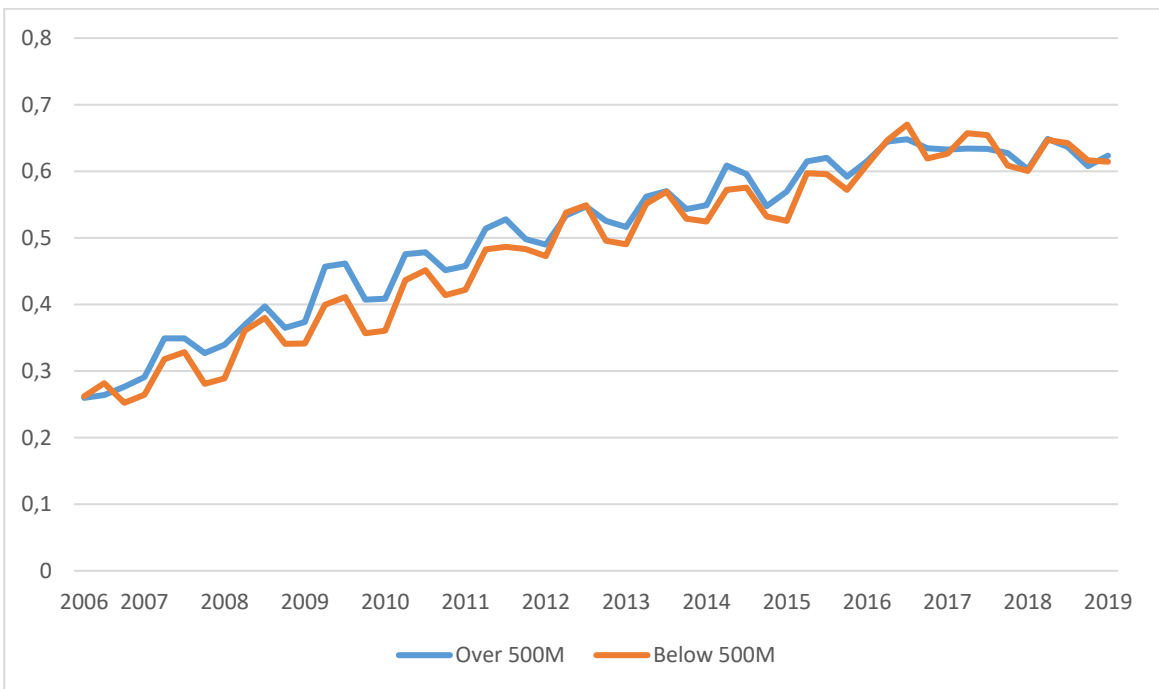


Figure 17. Average recycling rate for local authorities that have had more/less than 500 million pounds spent in by all overnight travellers from 2011 to 2019. Source: WasteDataFlow and the Tourism Profile.