

Rift-induced disruption of cratonic keels drives kimberlite volcanism

Thomas M. Gernon^{a,*}, Stephen M. Jones^b, Sascha Brune^{c,d}, Thea K. Hincks^a, Martin R. Palmer^a, John C. Schumacher^e, Rebecca M. Primiceri^a, Matthew Field^f, William L. Griffin^g, Suzanne Y. O'Reilly^g, Derek Keir^{a,h}, Christopher J. Spencerⁱ, Andrew S. Merdith^j, Anne Glerum^c

^a*School of Ocean & Earth Science, University of Southampton, Southampton SO14 3ZH, UK*

^b*School of Geography, Earth & Environmental Sciences, University of Birmingham, Edgbaston, Birmingham B15 2TT, UK*

^c*Helmholtz Centre Potsdam – GFZ German Research Centre for Geosciences, Potsdam, Germany*

^d*University of Potsdam, Potsdam-Golm, Germany*

^e*Department of Geology, Portland State University, Portland, OR, USA*

^f*Mayfield, Wells Road, Wookey Hole Wells, Somerset, BA5 1DN, UK*

^g*GEMOC ARC National Key Centre, Earth and Environmental Sciences Macquarie University NSW 2109, Australia*

^h*Dipartimento di Scienze della Terra, Università degli Studi di Firenze, Florence, Italy*

ⁱ*Department of Geological Sciences and Geological Engineering, Queen's University, Kingston, Canada*

^j*School of Earth and Environment, University of Leeds, Leeds LS2 9JT, UK*

Kimberlites are volatile-rich, occasionally diamond-bearing magmas that have erupted explosively at Earth's surface in the geologic past^{1,2,3}. These enigmatic magmas, originating from depths exceeding 150 kilometres in Earth's mantle¹, occur in stable cratons and in pulses broadly synchronous with supercontinent cyclicity⁴. Whether their mobilization is driven by mantle plumes⁵ or by mechanical weakening of cratonic lithosphere^{4,6} remains unclear. Here we show that most kimberlites spanning the past billion years erupted about 30 million years after continental breakup, suggesting an association with rifting processes. Our dynamical and analytical models show that physically steep lithosphere-asthenosphere boundaries formed during rifting generate convective instabilities in the asthenosphere that slowly migrate many hundreds to thousands of kilometres inboard of rift zones. These instabilities endure many tens of millions of years after continental breakup and destabilize the basal tens of kilometres of the cratonic lithosphere, or keel. Displaced keel is replaced by a hot, upwelling mixture of asthenosphere and recycled volatile-rich keel in the return flow, causing decompressional partial melting. Our calculations show that this process can generate small-volume, low-degree, volatile-rich melts, closely matching the characteristics expected of kimberlites^{1,2,3}. Together, these results provide a quantitative and mechanistic link between kimberlite episodicity and supercontinent cycles via progressive disruption of cratonic keels.

Over geologic time, pulses of kimberlite magmatism correspond to episodes of global plate reorganization, with comparatively few kimberlite eruptions occurring during periods of supercontinent stability⁴ (Fig. 1a). This synchronicity may suggest that kimberlites are triggered by tectonic disturbances in cratonic lithosphere⁴, or by abrupt changes in plate movement⁶. However, such hypotheses do not adequately explain what process stimulates melt generation, and raises a paradox: cratons are defined by their mechanical strength and long-term stability^{7,8,9,10} so they should resist tectonic deformation¹¹. An alternative model is that kimberlite distributions are controlled by mantle (super-) plumes, possibly linked to large low-shear-velocity provinces (LLSVPs)⁵, which might fertilize, hybridize, and even destabilize the cratonic root^{9,12}. This model is, however, hard to reconcile with geochemical characteristics of kimberlites, many of which are inconsistent with plume sources^{13,14,15} and instead necessitate partial melting of convecting mantle coupled with assimilation of cratonic lithosphere^{13,15,16}. Testing these and other models (see Methods) requires both a fully integrated consideration of geodynamics and geochemistry, and an assessment of spatio-temporal dependencies in the global tectonic cycle.

*Corresponding author: Thomas.Gernon@noc.soton.ac.uk

Kimberlites and global tectonics

We begin by assessing the global link between kimberlites and tectonics through time and across all continents using a database of radiometrically-dated kimberlites⁶ and a measure of the degree of fragmentation of continental plates from tectonic reconstructions¹⁷. We calculate the rate of change of fragmentation (ΔF) as a proxy for dynamic plate reorganization (Extended Data Fig. 1), and then calculate multi-million-year time lags¹⁸ between ΔF and the kimberlite count, K , at 1 million-year (Myr) intervals (Methods; Fig. 1b; Supplementary Dataset 1). Our cross-correlation analysis reveals a statistically significant association between fragmentation and kimberlites over the past 500 Myr (Fig. 1b), which persists when we account for auto-correlation in the time series (Extended Data Fig. 2a). The strongest correlation coefficient ($\rho=0.41$) prevails at lags of -26 ± 4 Myr, indicating that continental fragmentation typically leads kimberlite magmatism by 22–30 Myr, while a proportion of kimberlites erupt during the interval between rift onset and breakup (Fig. 1b). When we extend our data compilation to 1 billion years ago (Ga), using more uncertain data but capturing two supercontinent cycles (Fig. 1a; Extended Data Fig. 1), the strongest correlation remains at the same lag (Extended Data Fig. 2b). Further, when we account for preservation bias by weighting the number of kimberlites inversely according to surface preservation, the same lag persists (Extended Data Fig. 2c). The signal strengthens ($\rho=0.52$) when we isolate kimberlites <200 million years old (Ma), a period when the level of certainty in global tectonic models is highest (Extended Data Fig. 2d; Methods). The consistent delay between rifting onset and kimberlite volcanism strongly appears to be a genuine feature of the global geodynamic cycle.

We scrutinize this linkage further by analyzing the temporal and spatial relationships between kimberlites and continental plate margins, first targeting the Mesozoic kimberlite fields of Africa and South America that formed during breakup of the southern part of the Pangaea supercontinent, Gondwana (Fig. 1a). These regions are perfectly suited for our purposes because the rift kinematics along adjacent plate boundaries are well constrained at this time¹⁹, and the abundant kimberlites are well understood in terms of their age distributions⁶ and the structure of lithosphere they sample^{20,21,22}. We perform spatio-temporal cluster analysis (Methods) to avoid spatial biases that may result from oversampling within kimberlite fields. We account for uncertainty in kimberlite age, breakup age, and rift distance by Monte Carlo simulation (Methods; Extended Data Figs. 3–5). Using paleogeographic reconstructions from the plate tectonics software, GPlates²³ (<https://www.gplates.org/>), we measure distances between kimberlite clusters and adjacent rift boundaries and calculate time lags between continental breakup and eruption (Extended Data Figs. 3, 4), allowing for cases where eruption occurred during the interval between rift onset and breakup (Methods). This analysis confirms that the main peak in kimberlite emplacement occurs 25–45 Myr after the onset of regional breakup (Fig. 1d), consistent with our global analysis (Fig. 1b). Importantly, we find that kimberlites tend to erupt closer to rifted margins earlier in the rifting cycle—as qualitatively noted before in the São Francisco and Kaapvaal Cratons⁹—and migrate toward the cratonic interior as fragmentation progresses, initially at a rate of about 10–25 km Myr⁻¹, but most likely on the order of 16–20 km Myr⁻¹ (Figs. 1c,e; Extended Data Fig. 3c; Methods).

This finding prompts us to ask whether similar migration patterns can be identified in the many kimberlite fields that erupted across North America during the Phanerozoic, with this activity escalating in the Jurassic (Fig. 1a; Extended Data Fig. 3a). The Cretaceous kimberlite ‘corridor’ (encompassing Somerset Island, Kansas, and Saskatchewan) tracks the edge of the North American craton, far from any known mantle plume influence¹⁵. We perform a similar distance-lag analysis for these kimberlites relative to the major Pangaea rift system that initiated along the Atlantic continental margin of the United States in the Middle Triassic, at ~240 Ma²⁴. As with the African and South American fields (Fig. 1d), we can identify two peaks in volcanism—one occurring between rifting and breakup, and the other lagging breakup by 30–60 Myr (Extended Data Fig. 5). Collectively, these data reveal median migration rates of 26.3 km Myr⁻¹ relative to rifting onset (Fig. 1e). The variability in migration rate estimates (Fig. 1e) can be explained by the complex spatial and temporal evolution of rifting (and subsequent breakup) in relation to kimberlite clusters. To address this, we quantify the uncertainty associated with attributing a kimberlite eruption to a specific initiating rifting event (Fig. 1e; Methods). Median migration rate estimates for the end-member cases are 11 and 30 km Myr⁻¹ for kimberlite clusters globally (Extended Data Fig. 4), with an overall median of 20.6 km Myr⁻¹ (Fig. 1e; including $n=623$ kimberlites, or 87.5% of the catalogue from 240 Ma). Notably, these rates are consistent across all three continents, irrespective of continental length scale (Fig. 1e), suggesting that some fundamental mechanism gives rise to migration of kimberlite volcanism far inboard of rift zones in the tens of millions of years after rifting commences.

Kimberlites, rifting, and mantle plumes

Both our global (Fig. 1b) and regional (Fig. 1c–e) analyses indicate that kimberlite magmatism is strongly tied to continental breakup. However, both breakup²⁵ and kimberlite magmatism⁵ are commonly attributed to mantle plumes. A crucial question, therefore, is whether rifting itself is the primary driver of kimberlites, or whether mantle plumes drive both rifting and kimberlite magmatism. To address this question, we quantify the relationship between rifting, plumes, and kimberlites globally (Methods). We find that the strongest statistically significant correlation between Large Igneous Provinces, LIPs (the accepted main surface expression of mantle plumes²⁵) and continental fragmentation occurs at $+7 \pm 4$ Myr, i.e., plumes/LIPs lead breakup (Extended Data Fig. 6). Recalling our observation that most kimberlites lag breakup by ~ 30 Myr, it at first seems possible that a plume could trigger breakup ~ 7 Myr after impingement, and then the main peak in kimberlite generation ~ 30 Myr later. However, the lagged correlation between breakup and kimberlites is considerably stronger than that with LIPs, suggesting rifting is the first-order control. Further, the plume model cannot explain our observation that kimberlites tend to erupt closer to the rift boundary earlier in the rifting cycle and migrate inboard of the rift over time. There is no clear mechanism by which plumes could explain this pattern. Thus, we conclude that mantle plumes may (or may not) be a primary driver of continental breakup, and may locally warm cratonic keels¹², impregnating them with super-deep diamonds (potentially long before eruption¹⁴), but it is the rifting process itself that controls most kimberlite magmatism.

We propose that rifting triggers the migrating pattern of kimberlite eruptions hundreds of kilometres inboard of the rift over time (Fig. 1c). We review the proposed mechanisms for tectonic and magmatic rejuvenation of cratons to assess which have the potential to explain both kimberlite melting and migration, and an association with rifting (Methods). Cratonic thinning by surface uplift and exhumation can be triggered by rifting²⁶ but occurs too slowly to generate melting. In cases where rifting occurs on the edge of the craton, the cratonic lithosphere does not appear to stretch and thin mechanically. This interpretation is based on geologic observations of a lack of horizontal tectonic motions within cratons^{7,8,9,10,11}, and on dynamical models which show that lithosphere >300 km inboard of rifted margins is not thinned appreciably by extension^{27,28}. The remaining potential cratonic rejuvenation mechanisms involve removal of the basal lithosphere²⁹, or keel, and the subset that can potentially explain both kimberlite melting and an association with rifting all involve mantle convective removal of the keel (Methods). The open questions are: how does rifting trigger convective instability in the adjacent cratonic lithospheric keel (hereafter, keel); and can removal of this keel cause melting of appropriate volume and composition?

[7] Kimberlites are generally found in, or marginal to, thick (150–250 km) cratons^{1,3,7,8,11,13,30} (Extended Data Figs. 3a,b). An inevitable consequence of fragmenting cratons is the generation of a physically steep-sided lithosphere–asthenosphere boundary (LAB)¹². The steep edge of the LAB prompts edge-driven convection³¹, in which convective downwelling of keel occurs on the side of the edge further from the rift, as demonstrated by numerical modelling^{26,27,28,32} and seismic tomography beneath modern passive margins³¹. Though edge-driven convection is triggered by rifting and can remove keel near the rift, it is currently unclear whether it can explain convective removal of keel further away (>300 km) from the rift. One possible mechanism is Rayleigh–Taylor instability — a well-described mantle convective process that can potentially occur beneath mature continental or oceanic lithosphere^{26,29,32,33,34,35}. This instability is driven primarily by the density contrast between colder lithosphere and hotter asthenosphere. In the case of cratons, this negative buoyancy driver can be augmented by metasomatism, or refertilization, of keels^{21,29,36,37}. For instance, pre-eruptive melt-metasomatism³⁶ can impart compositional changes (e.g., Extended Data Fig. 7) that increase the bulk density by several percent^{36,37}, destabilizing the lowermost tens of kilometres of keel^{21,36,37,38}. Therefore, Rayleigh–Taylor instability could cause convective removal of keel, and subsequently lithospheric thinning. Further, convective downwelling is balanced by upwelling of asthenosphere that can feasibly cause melting, particularly if detached keel veined by hydrous and carbonate-rich metasomatic phases^{12,20,39} is entrained in the upwelling. Petrological observations^{12,21,36,40} and dynamic models³⁴ indicate that substantial removal of cratonic keel (tens of km thick) can occur abruptly (over several Myr)^{9,12}, suggestive of a convective process. The question is then whether rift-related edge-driven convection can destabilize, and partially melt, adjacent keel hundreds to even thousands of kilometres inboard of rifted margins via Rayleigh–Taylor instabilities.

Geodynamic and analytical models

[8] To address this question, we quantify the mechanical and thermal influence of breakup on lithospheric stability using two independent and complimentary methods (Figs. 2, 3). To investigate the essential physics of the process, we perform a scaling analysis based on analytical models of viscous instabilities representing the thermal boundary layer between mechanically rigid lithosphere and convecting asthenospheric mantle (Fig. 3a; Methods). To assess the influence of the more complex natural geometry and rheology of rifting cratonic lithosphere, we also carry out more sophisticated numerical thermo-mechanical simulations (Fig. 2; Extended Data Table 2; Methods). Both methods predict that rift onset and subsequent necking should trigger initial instabilities in the basal lithosphere beneath the rift shoulder, which crucially then trigger a chain of further instabilities that propagate away from the rift towards the cratonic interior (Fig. 2). The scaling analysis predicts that the horizontal propagation velocity for the chain of instabilities scales as the ratio of the characteristic horizontal wavelength, λ_d , and the characteristic e-folding growth time, τ_d , of individual instabilities. Specifically, the propagation velocity (U) is given by

$$U \sim \frac{\lambda_d}{\tau_d} = \lambda_d^* q_d^* \frac{g' b^2}{\nu} \quad (1)$$

where λ_d^* and q_d^* are analytically determined scales for the characteristic horizontal wavelength and growth rate respectively, $g' = g\Delta\rho/\rho$ is reduced gravity, $\Delta\rho$ is the density difference that drives the instability relative to asthenospheric density ρ , b is the mean starting thickness of the unstable lithospheric keel (i.e., thermal boundary layer), and ν is the kinematic viscosity. Using equation 1, and considering thermal boundary layer thicknesses from xenolith pressure-temperature (P - T) estimates (Extended Data Fig. 8), the propagation velocities are of order 14–26 km Myr⁻¹ (Fig. 3a; Extended Data Table 1). The simulations confirm how migrating instability leads to a sequence of progressive convective removal events (Fig. 2; Supplementary Video 1), which initiate during rifting and migrate beneath the craton at similar rates of 15–20 km Myr⁻¹ (Extended Data Fig. 9). Both approaches yield propagation (or migration) rates that are very closely consistent with those estimated for kimberlites (Figs. 1e, 3a; Extended Data Fig. 3c). Further, the characteristic scale of instabilities (wavelengths: 40–65 km; Extended Data Table 1) broadly match those of proposed kimberlite melt sources (10–100 km diameter^{41,42}) and kimberlite fields at the surface (30–50 km diameter⁴²). The simulations (Fig. 2; Extended Data Fig. 9) corroborate our observation that kimberlite migration can initiate during rifting, tens of Myr prior to breakup (Fig. 1c). This suggests that kimberlites can feasibly be associated with ‘failed’ rifts as well as those that progress to breakup.

Hybridization of mantle melts

Hybridization of asthenospheric and lithospheric melts is required to explain kimberlite compositions¹⁶. At pressures conducive to diamond formation ($\gtrsim 5$ GPa), the LAB—a thermal boundary with an adiabatic temperature near 1,300 °C—closely coincides with the solidus of carbonated mantle^{2,43}. Hence, whilst cratonic roots are anomalously thick, cool, and stable over billions of years^{7,9,30}, only small changes in pressure and temperature are required to generate the small-volume, low-degree partial melts thought to be characteristic of kimberlites^{2,42,43,44}.

Our models suggest that entrained, variably metasomatized keel (Fig. 2) could be an important contributor of carbonate and hydrous phases to the kimberlite mantle source^{2,3,41,45}. The question is whether these phases coexist in the lithosphere’s thermal boundary layer, which we propose is detached via convective erosion before rapidly recirculating upward and melting (Fig. 2). To investigate this, we can examine phase equilibria models of peridotite rocks³⁰ that dominate the cratonic keels^{7,10,11}. In our model, migrating convective instabilities detach peridotite rock from the keel, and kimberlite magmas result from partial melting of the convectively circulating peridotite. Considering peridotite melting in the presence of CO₂ + H₂O, the thermal boundary layer (as defined by our geotherm analysis; Extended Data Fig. 8) is expected to have an important reduced solidus that juxtaposes carbonate-rich and hydrous incipient silicate melts (Fig. 3b). The shallowest keel is metasomatized, containing diamonds that probably formed via redox freezing³⁰. Melting experiments show that hybridization of these reduced, depleted peridotites with oxidized, hydrous CO₂-rich melts, should drive strong melting reactions³⁰. However, until now, a mechanism to decouple and hybridize these oxidized and reduced domains was lacking.

We propose that convective removal of the thermal boundary layer can hybridize such compositionally heterogeneous domains in the asthenosphere, promoting interaction between these reactive, incipient melts (Fig. 2; Supplementary Video 1). In our analytical models, the thermal Péclet number for return flow confirms that asthenosphere will well up adiabatically (to shallower depths of 150–170 km and lower pressures of 5–5.5 GPa) to replace the removed part of keel (Fig. 2; Extended Data Table 1). Our simulations then advance on this footing to show that detached keel is entrained in the upwelling asthenospheric return flow (Fig. 2; Supplementary Video 1), but can this process reconcile the attributes of kimberlite melting? Assuming that H₂O and CO₂ are present in the source—as is generally accepted^{2,3,15,41,43,44,45,46} (Fig. 3b)—we apply a hydrous decompressional melting parameterization⁴⁷ (Methods) to estimate that up to c. 1% partial decompressional melting can occur within the upwelling limbs of convective instabilities beneath thick lithosphere (Fig. 3c). Our prediction closely matches melt degrees inferred from kimberlite petrology (<1%)⁴². Upwelling within each convective instability can potentially generate tens to hundreds of km³ of magma over its lifetime (Fig. 3c), which is sufficient to explain estimated volumes of eruptions in kimberlite clusters⁴¹. According to our calculations, the resulting small-volume melts will have pre-eruptive H₂O contents of the order of 9–14 wt% (Fig. 3c), overlapping with estimated compositions⁴⁶. These melts will ascend rapidly and adiabatically⁴⁵, reacting with mantle lithosphere and evolving in composition during ascent^{3,46}.

Evolution of kimberlite magmatism

If several tens of kilometres of cratonic keel is removed, this should be detectable using geochemical and geophysical constraints. Taking southern Africa as an example, geochemical studies of peridotitic xenoliths and garnet xenocrysts independently invoke loss of 30–40 km lithosphere, which was coincident with massive kimberlite volcanism during the mid-Cretaceous^{40,48} (Figs. 1a, 4). This removal is consistent with evidence for coeval, substantial exhumation (2–4 km) across the cratonic regions of southern Africa and South America^{9,49}. The removed thickness closely matches both our empirically derived thickness of lithospheric thermal boundary layer (~35 km; Extended Data Fig. 8), and the intensely melt-metasomatized root of the Kaapvaal Craton inferred from the petrology of deep xenoliths brought up by the kimberlites^{20,21,22}.

Sublithospheric convective instabilities may also drive melting in the oceanic realm, where complex (or absent) age-distance patterns of volcanism have been linked to prolonged interaction of asthenospheric mantle with thinned lithosphere³⁵. In contrast, a simple, systematic age-distance pattern emerges from our statistical analysis of kimberlites (Figs. 1c,e), although there is clearly variability about this general trend. Our analysis indicates that kimberlite melting beneath cratons occurs via convective removal of keel that has been enriched by volatiles over a prolonged period (in comparison to oceanic lithosphere). This process drives explosive eruptions above the migrating locus of melting (Fig. 5). Indeed, melting may occur in several phases reflecting the dynamic evolution of rifts. It is tempting to interpret the bimodal peak in kimberlite lag times—evident in Africa, South America, and North America (Fig. 1d; Extended Data Figs. 3d, 5)—to relate to two main phases of instability growth and migration: the first linked to rift onset with kimberlite magmatism peaking 20–40 Myr later (preceding or coinciding with breakup); and the second linked to rift necking with kimberlites peaking 25–50 Myr after breakup (Fig. 1d). Because convective instabilities can persist beneath cratons for many tens of Myr (Fig. 2; Supplementary Video 1), the longevity of kimberlite magmatism will be limited by the availability of metasomatized keel. However, this may vary depending on its entrainment rate in convective upwellings and exhaustion during melting, which can result in either prolonged or short-lived magmatic activity, leading to considerable natural variability in the spatio-temporal data, as we observe (Fig. 1c).

Additionally, kimberlite compositions should evolve from exhibiting mainly lithospheric signatures, which reflect a relatively high proportion of entrained keel, to primarily asthenospheric mantle signatures. We can test this hypothesis by studying time-integrated variations in kimberlite isotope geochemistry at the craton-scale. Notably, there is compelling evidence for a pronounced temporal shift in Mesozoic kimberlite compositions in southern Africa that signals abrupt lithospheric disruption: a step change in compositions from those initially exhibiting strong lithospheric and metasomatic enrichment (orangeites, previously termed ‘Group 2’ kimberlites)⁵⁰ to those exhibiting predominantly asthenospheric mantle signatures (archetypal ‘Group 1’ kimberlites)⁵⁰ (Fig. 4; Extended Data Fig. 10). The petrogenesis of later kimberlites implies shallower, hotter melting conditions at 150–160 km depth, in many cases only several Myr after melting dominated by lithospheric assimilation at ~200 km depth⁴⁰. This compositional change is not peculiar to southern Africa: we identify a remarkably similar shift from lithospheric to mantle kimberlite isotope

compositions in North America (Fig. 4; Extended Data Fig. 11). We attribute these geochemical changes to the progressive convective erosion and eventual removal of the lithospheric keel. Accordingly, the formation of orangeites is linked to the disturbance and upward recirculation of lithospheric material caused by early instabilities. These instabilities are not strong enough to fully remove the keel (Figs. 3c, 4, 5), resulting in the eruption of small-volume ultrapotassic magmas enriched in metasomatized lithospheric material. In the complete cycle, over tens of millions of years, the lithospheric keel undergoes more vigorous convective erosion, primarily caused by instabilities formed during continental breakup, leading to its progressive removal over distances of 10^2 to 10^3 km (Supplementary Video 1). This removal is naturally then followed by eruption of kimberlites with progressively stronger asthenospheric signatures (Fig. 5), as evidenced by changes in isotope chemistry⁵⁰ and coeval shifts in the Ti contents of garnet xenocrysts⁴⁰ (Extended Data Figs. 10, 11).

In summary, previous models cannot satisfactorily explain how kimberlite melts are generated and mobilized from the mantle source, nor their apparent linkage to the fundamental reorganization of Earth's tectonic plates (Fig. 1). Our analytical and geodynamic models (Fig. 2) demonstrate that rifting and continental breakup can generate a chain of Rayleigh-Taylor instabilities in the asthenosphere that progressively migrate inboard of rift zones, eroding cratonic keel—a process capable of generating kimberlites far from the parent rift (Figs. 3, 5). Our findings demonstrate that kimberlite volcanism migrates into cratonic interiors at remarkably similar rates to those expected of such instabilities (Figs. 2, 3a)—an observation spanning several continents (Fig. 1; Extended Data Fig. 3). Our model reconciles diagnostic kimberlite features, such as association with cratons and geochemical characteristics that implicate a common asthenospheric mantle source contaminated by cratonic lithosphere^{13,14,16,51}. Taken together, our results indicate that kimberlite magmas are generated, and their eruptions are triggered, by the far-field effects of rift tectonics during the breakup phase of supercontinent cycles.

References

1. Mitchell, R.H. *Kimberlites: Mineralogy, Geochemistry, and Petrology*. Springer Science and Business Media, New York (1986).
2. Sparks, R. S. J., et al. Dynamical constraints on kimberlite volcanism. *Journal of Volcanology and Geothermal Research*, 155(1):18–48 (2006).
3. Russell, J. K., Porritt, L. A., Lavallée, Y. & Dingwell, D. B. Kimberlite ascent by assimilation-fuelled buoyancy. *Nature*, 481(7381):352–356 (2012).
4. Jelsma, H., Barnett, W., Richards, S & Lister, G. Tectonic setting of kimberlites. *Lithos*, 112:155–165 (2009).
5. Torsvik, T. H., Burke, K., Steinberger, B., Webb, S. J. & Ashwal, L. D. Diamonds sampled by plumes from the core–mantle boundary. *Nature*, 466(7304):352–355 (2010).
6. Tappe, S., Smart, K., Torsvik, T., Massuyeau, M. & de Wit, M. Geodynamics of kimberlites on a cooling Earth: Clues to plate tectonic evolution and deep volatile cycles. *Earth and Planetary Science Letters*, 484:1–14 (2018).
7. Pearson, D. G. et al. Deep continental roots and cratons. *Nature*, 596(7871):199–210 (2021).
8. Celli, N. L., Lebedev, S., Schaeffer, A. J. & Gaina, C. African cratonic lithosphere carved by mantle plumes. *Nature Communications*, 11(1):92 (2020).
9. Hu, J. et al. Modification of the Western Gondwana craton by plume–lithosphere interaction. *Nature Geoscience*, 11(3):203–210 (2018).
10. Capitanio, F. A., Nebel, O. & Cawood, P. A. Thermochemical lithosphere differentiation and the origin of cratonic mantle. *Nature*, 588(7836):89–94 (2020).
11. Perchuk, A. L., Gerya, T. V., Zakharov, V. S. & Griffin, W. L. Building cratonic keels in Precambrian plate tectonics. *Nature*, 586(7829):395–401 (2020).
12. Foley, S. F. Rejuvenation and erosion of the cratonic lithosphere. *Nature Geoscience*, 1(8):503–510 (2008).
13. Tappe, S. et al. Plates or plumes in the origin of kimberlites: U/Pb perovskite and Sr–Nd–Hf–Os–C–O isotope constraints from the Superior craton (Canada). *Chemical Geology*, 455:57–83 (2017).
14. Tappe, S., Budde, G., Stracke, A., Wilson, A. & Kleine, T. The tungsten-182 record of kimberlites above the African superplume: Exploring links to the core-mantle boundary. *Earth and Planetary Science Letters*, 547:116473 (2020).
15. Kjarsgaard, B. A., Heaman, L. M., Sarkar, C. & D. G. Pearson. The North America mid-Cretaceous kimberlite corridor: Wet, edge-driven decompression melting of an OIB-type deep mantle source. *Geochemistry, Geophysics, Geosystems*, 18(7):2727–2747 (2017).
16. Giuliani, A. et al. Kimberlite genesis from a common carbonate-rich primary melt modified by lithospheric mantle assimilation. *Science Advances*, 6(17):eaaz0424 (2020).
17. Merdith, A. S. et al. Extending full-plate tectonic models into deep time: Linking the Neoproterozoic and the Phanerozoic. *Earth-Science Reviews*, 214:103477 (2021).
18. Gernon, T. M. et al. Global chemical weathering dominated by continental arcs since the mid-Palaeozoic. *Nature Geoscience*, 14(9):690–696 (2021).
19. Brune, S., Williams, S. E., Butterworth, N. P. & Müller, R. D. Abrupt plate accelerations shape rifted continental margins. *Nature*, 536(7615):201–204 (2016).
20. Griffin, W. L., O'Reilly, S. Y., Afonso, J. C. & Begg, G. C. The composition and evolution of lithospheric mantle: a re-evaluation and its tectonic implications. *Journal of Petrology*, 50(7):1185–1204 (2009).

21. Begg, G. C. et al. The lithospheric architecture of Africa: Seismic tomography, mantle petrology, and tectonic evolution. *Geosphere*, 5(1):23–50 (2009).
22. O'Reilly, S. Y. & Griffin, W. L. Mantle metasomatism. In Harlov, D. E. & Austrheim, H., editors, *Metasomatism and the Chemical Transformation of Rock: The Role of Fluids in Terrestrial and Extraterrestrial Processes*, pages 471–533. Springer Berlin Heidelberg, Berlin, Heidelberg (2013).
23. Müller, R. D. et al. GPlates: Building a Virtual Earth Through Deep Time. *Geochemistry, Geophysics, Geosystems*, 19(7):2243–2261 (2018).
24. Müller, R. D. et al. A global plate model including lithospheric deformation along major rifts and orogens since the Triassic. *Tectonics*, 38(6):1884–1907 (2019).
25. Ernst, R. E. *Large igneous provinces*. Cambridge University Press (2014).
26. van Wijk, J. W. et al. Small-scale convection at the edge of the Colorado Plateau: Implications for topography, magmatism, and evolution of Proterozoic lithosphere. *Geology*, 38(7):611–614 (2010).
27. Huismans, R. & Beaumont, C. Depth-dependent extension, two-stage breakup and cratonic underplating at rifted margins. *Nature*, 473(7345):74–78 (2011).
28. Gorczyk, W. & Gonzalez, C. M. CO₂ degassing and melting of metasomatized mantle lithosphere during rifting—Numerical study. *Geoscience Frontiers*, 10(4):1409–1420 (2019).
29. Lee, C.-T. A., Luffi, P. & Chin, E. J. Building and destroying continental mantle. *Annual Review of Earth and Planetary Sciences*, 39(1):59–90, (2011).
30. Pintér, Z., Foley, S. F. & Yaxley, G. M. Diamonds, dunites, and metasomatic rocks formed by melt/rock reaction in craton roots. *Communications Earth & Environment*, 3(1):296 (2022).
31. King, S. D. & Anderson, D. L. Edge-driven convection. *Earth and Planetary Science Letters*, 160(3):289–296 (1998).
32. Buck, W. R. Small-scale convection induced by passive rifting: the cause for uplift of rift shoulders. *Earth and Planetary Science Letters*, 77(3):362–372 (1986).
33. Conrad, C. P. & Molnar, P. The growth of Rayleigh–Taylor-type instabilities in the lithosphere for various rheological and density structures. *Geophysical Journal International*, 129(1):95–112 (1997).
34. Gorczyk, W., Hobbs, B. & Gerya, T. Initiation of Rayleigh–Taylor instabilities in intra-cratonic settings. *Tectonophysics*, 514–517:146–155 (2012).
35. Ballmer, M. D., Ito, G., van Hunen, J. & Tackley, P. J. Small-scale sublithospheric convection reconciles geochemistry and geochronology of ‘Superplume’ volcanism in the western and south Pacific. *Earth and Planetary Science Letters*, 290(1):224–232 (2010).
36. Poudjom Djomani, Y. H., O'Reilly, S. Y., Griffin, W. L. & Morgan, P. The density structure of subcontinental lithosphere through time. *Earth and Planetary Science Letters*, 184(3):605–621 (2001).
37. Griffin, W. L. & O'Reilly, S. Y. Cratonic lithospheric mantle: Is anything subducted? *Episodes*, 30(1):43–53 (2007).
38. Elkins-Tanton, L. T. Continental magmatism, volatile recycling, and a heterogeneous mantle caused by lithospheric gravitational instabilities. *Journal of Geophysical Research: Solid Earth*, 112(B03405) (2007).
39. O'Reilly, S. Y. & Griffin, W. L. Imaging global chemical and thermal heterogeneity in the subcontinental lithospheric mantle with garnets and xenoliths: Geophysical implications. *Tectonophysics*, 416(1):289–309 (2006).
40. Kobussen, A. F., Griffin, W. L., O'Reilly, S. Y. & Shee, S. R. Ghosts of lithospheres past: Imaging an evolving lithospheric mantle in southern Africa. *Geology*, 36(7):515–518 (2008).
41. Russell, J. K., Sparks, R. S. J. & Kavanagh, J. L. Kimberlite volcanology: Transport, ascent, and eruption. *Elements*, 15(6):405–410 (2019).
42. Grégoire, M., Rabinowicz, M. & Janse, A. J. A. Mantle mush compaction: A key to understand the mechanisms of concentration of kimberlite melts and initiation of swarms of kimberlite dykes. *Journal of Petrology*, 47(3):631–646 (2006).
43. Gudfinnsson, G. H. & Presnall, D. C. Continuous gradations among primary carbonatitic, kimberlitic, melilititic, basaltic, picritic, and komatiitic melts in equilibrium with garnet ilmenite at 3–8 GPa. *Journal of Petrology*, 46(8):1645–1659 (2005).
44. Arndt, N. T. et al. Olivine, and the origin of kimberlite. *Journal of Petrology*, 51(3):573–602 (2010).
45. Kavanagh, J. L. & Sparks, R. S. J. Temperature changes in ascending kimberlite magma. *Earth and Planetary Science Letters*, 286(3):404–413 (2009).
46. Sparks, R. S. J. et al. The nature of erupting kimberlite melts. *Lithos*, 112:429–438 (2009).
47. Katz, R. F., Spiegelman, M. & Langmuir, C. H. A new parameterization of hydrous mantle melting. *Geochemistry, Geophysics, Geosystems*, 4(9):1073 (2003).
48. Janney, P. E. et al. Age, composition and thermal characteristics of South African off-craton mantle lithosphere: Evidence for a multi-stage history. *Journal of Petrology*, 51(9):1849–1890 (2010).
49. Stanley, J. R., Flowers, R. M. & Bell, D. R. Erosion patterns and mantle sources of topographic change across the southern African Plateau derived from the shallow and deep records of kimberlites. *Geochemistry, Geophysics, Geosystems*, 16(9):3235–3256 (2015).
50. Smith, C. B. Pb, Sr and Nd isotopic evidence for sources of southern African Cretaceous kimberlites. *Nature*, 304(5921):51–54 (1983).
51. Tappe, S., Pearson, D. G., Nowell, G., Nielsen, T., Milstead, P. & Muehlenbachs, K. A fresh isotopic look at Greenland kimberlites: Cratonic mantle lithosphere imprint on deep source signal. *Earth and Planetary Science Letters*, 305(1):235–248 (2011).
52. Mitchell, R. N. et al. The supercontinent cycle. *Nature Reviews Earth & Environment*, 2(5):358–374 (2021).
53. Hirth, G. & Kohlstedt, D. Rheology of the upper mantle and the mantle wedge: A view from the experimentalists. In J. Eiler, editor, *Inside the Subduction Factory*, volume 138, pages 83–105. American Geophysical Union (AGU) (2004).
54. Day, H. W. A revised diamond-graphite transition curve. *American Mineralogist*, 97:52–62 (2012).

Figure Captions

Figure 1: Temporal relationships between tectonics and kimberlites. **a**, Frequency distribution of kimberlites through geologic time (data from ref.⁶), showing peaks coinciding with the breakup phase of supercontinent cycles (modified after ref.⁵²). **b**, Cross-correlations between ΔF and global kimberlites⁶ spanning 500–0 Ma (Methods), showing dominant time lags at -26 ± 4 Myr (i.e., fragmentation leading kimberlites); positive correlations show that kimberlites are linked to continental fragmentation, not assembly; dashed blue lines show 95% confidence intervals. **c**, Scatterplots for kimberlite clusters in Africa and South America showing time lags between continental breakup (at $t = 0$) and eruption (kimberlites, $n=388$) versus distance from the rifted margins of Gondwana; the individual points are the median values for clusters ($n=175$) accounting for age and distance uncertainties and the error bars show the standard deviation. The best-fit regression line (black) indicates a migration rate of ~ 16.1 km Myr⁻¹; blue lines show regressions for 5,000 simulations that consider uncertainties (Methods), yielding rates ranging from 9.3–22.3 km Myr⁻¹. **d**, Time lags between continent breakup and eruption of kimberlite clusters shown in (c) (Methods; Extended Data Fig. 3d). **e**, Probability density plots showing migration rates of kimberlites ($n=623$; clusters $n=253$), here relative to rift initiation, for continental margins of Africa, South America, and North America; global median migration rates are 20.6 km Myr⁻¹ for clustered data (black dashed line), accounting for age, distance, and model uncertainties (Methods; Supplementary Dataset 2).

Figure 2: Thermo-mechanical simulations of continental breakup showing generation and migration of Rayleigh-Taylor instabilities. **a**, Initial rifting causes mantle upwelling (black arrows) and development of steep lithospheric gradients; distance from the continent-ocean boundary (COB) is shown along the base, and time since rift onset (black) and breakup (red) along the top (TBL: thermal boundary layer). **b**, Rifting and necking leads to Rayleigh-Taylor instabilities in the convective mantle, which over time (**c–d**) propagate along the base of cratonic keel, progressively removing the thermal boundary layer. The instability shown migrates at a rate of approximately 15–20 km Myr⁻¹ (Fig. 3a; Extended Data Fig. 9; Supplementary Video 1). The models use an activation energy = 480 kJ/mol that is considered most reasonable for the asthenospheric mantle⁵³, but the effects of varying these values on the migration of instabilities and convective removal are explored in the Methods. Details of the model setup are provided in the Methods.

Figure 3: Rates of instability migration and conditions of melt generation. **a**, Lateral migration rates for Rayleigh-Taylor instabilities (equation 1) for six analytical fluid dynamical models (Extended Data Table 1). Models 1, 4 and 5 (black lines) are most applicable, and describe a dense, viscous layer representing the lithospheric keel that overlies a less dense, viscous half-space representing asthenosphere. A kinematic viscosity of 4×10^{15} m² s⁻¹ gives good agreement with constraints from kimberlite migration (Fig. 1e), numerical simulations of basal lithospheric instabilities (Fig. 2), and thermal boundary layer thicknesses inferred from modelling xenolith P - T data (Methods). **b**, Phase diagram for peridotite showing the oxidized solidus (CO₂+H₂O) and reduced solidus (CH₄+H₂O) from ref.³⁰ (see Methods for further details) and graphite-diamond phase boundary from ref.⁵⁴; red box shows P - T conditions in the thermal boundary layer (Extended Data Fig. 8). **c**, Degree of melting as a function of depth; also shown is the associated melt productivity per unit area of convective upwelling, assuming a mean upwelling rate of 30 km Myr⁻¹ determined from numerical models (Fig. 2); and the wt% water in the resulting melts for bulk water contents of 0.1, 0.15, and 0.2 wt%; these calculations use the hydrous decompressional melting parameterization of ref.⁴⁷ (Methods).

Figure 4: Geochemical evidence for removal of cratonic keel. Major kimberlite fields in **a**, South Africa, and **b**, North America, show abrupt shifts, identified using conjugate partitioned recursion (grey lines; Methods), from lithospheric (ϵNd_i -6 to -20) to mantle (ϵNd_i 0 to +5) Nd isotope compositions. Data sources provided in Extended Data Figs. 10–11; shaded band in (a) denotes independent evidence for removal of ~ 40 -km-thick keel⁴⁰.

Figure 5: Far-field effects of rifting on cratonic mantle keel stability through time. **a**, Simplified craton structure showing mechanical and thermal boundary layers. **b**, Rifting generates a steep lithospheric gradient that gives rise to Rayleigh-Taylor instability (dashed white lines depict schematic isotherms). **c**, Migration, continued growth and detachment of the instability (Fig. 2). Low-density asthenosphere wells up adiabatically to replace removed keel causing

partial melting of—and mixing with—metasomatized lithospheric keel. Resulting small-volume kimberlitic magmas ascend adiabatically to erupt at Earth's surface. Note the return flow (black arrow) may also warm and refertilize the keel, causing increases in density and, ultimately, further decoupling. **d**, The process repeats: destabilization and convective removal of cratonic keel propagates inboard of the rift leading to migration of kimberlite volcanism toward the cratonic interior (Figs. 1c,e). The simulations predict that the intensity of lithospheric assimilation declines over time: late-stage melting is dominated by asthenospheric mantle once the cratonic keel has foundered and/or been exhausted during early melting (Supplementary Video 1).

Publisher's note:

Springer Nature remains neutral with regard to jurisdictional claims in published maps and institutional affiliations.

Springer Nature or its licensor holds exclusive rights to this article under a publishing agreement with the author(s) or other rightsholder(s); author self-archiving of the accepted manuscript version of this article is solely governed by the terms of such publishing agreement and applicable law.

© The Author(s), under exclusive licence to Springer Nature Limited 2023

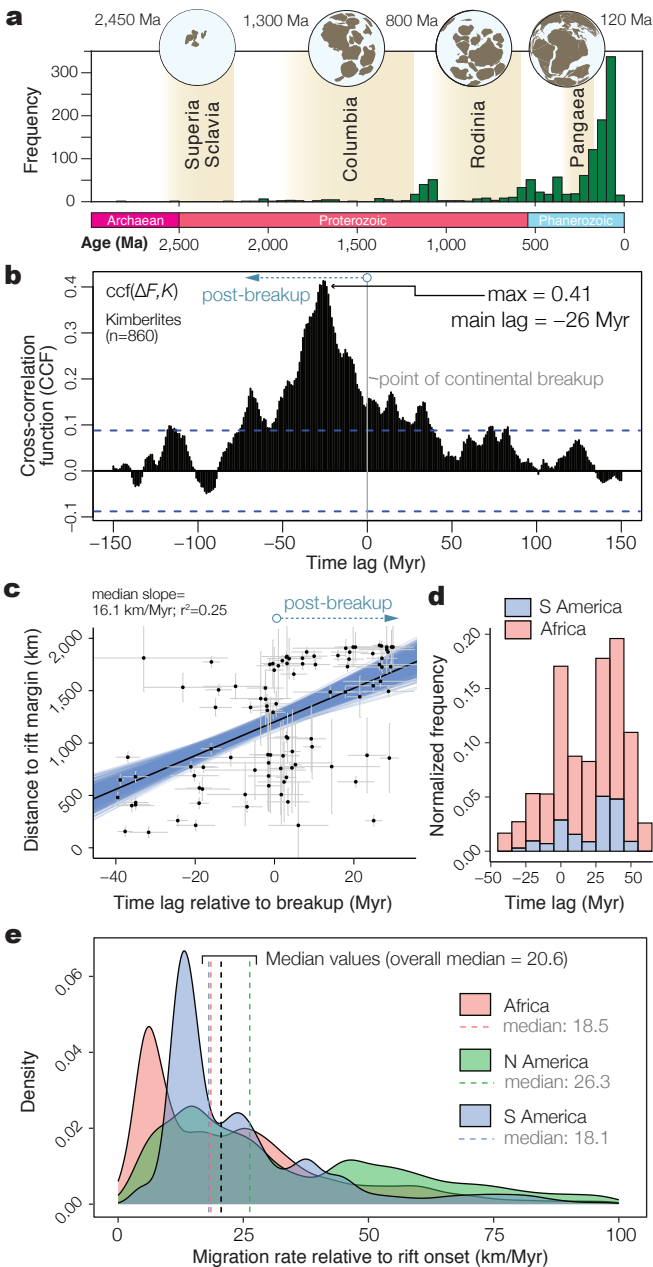
Figure 1

Figure 2

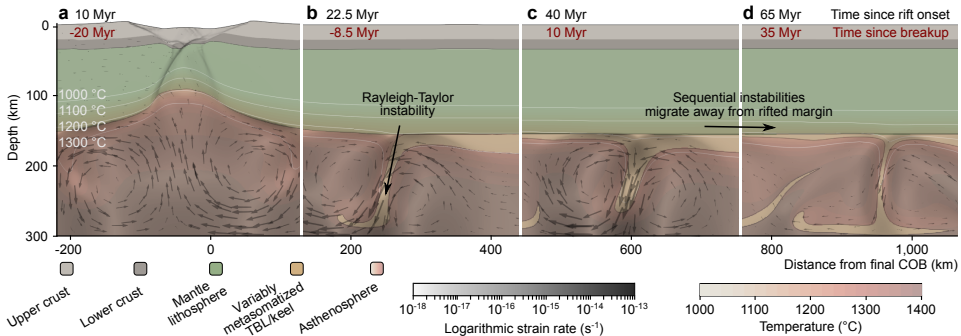
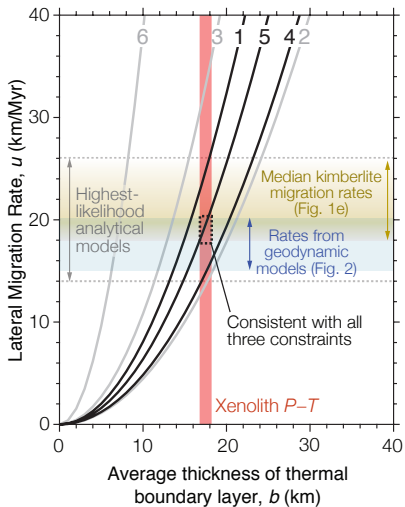
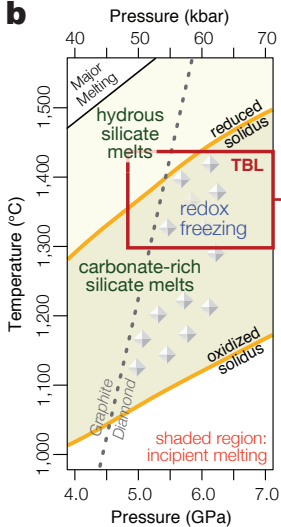


Figure 3

a



b



c

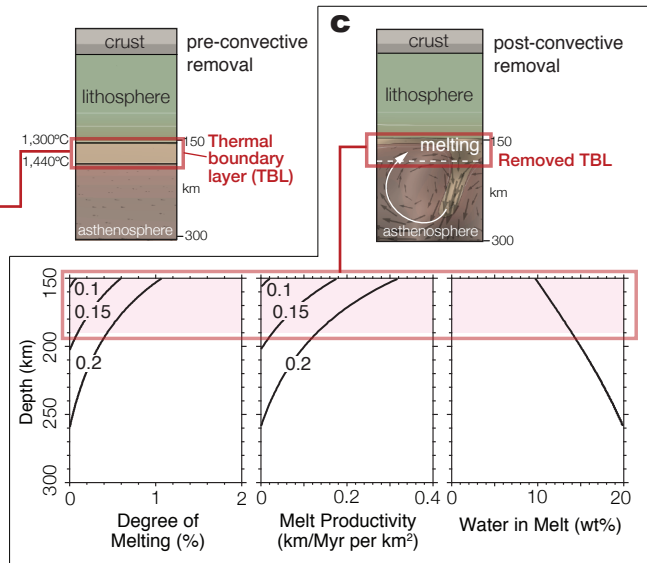


Figure 4

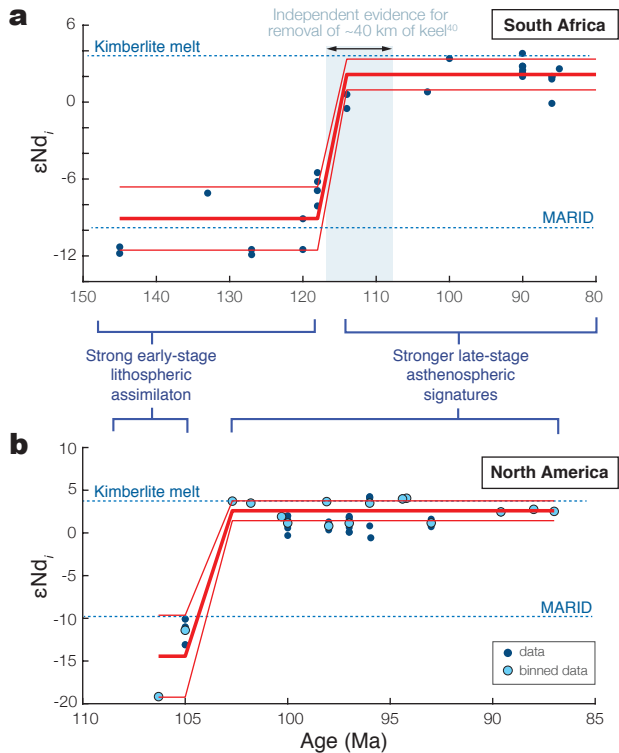
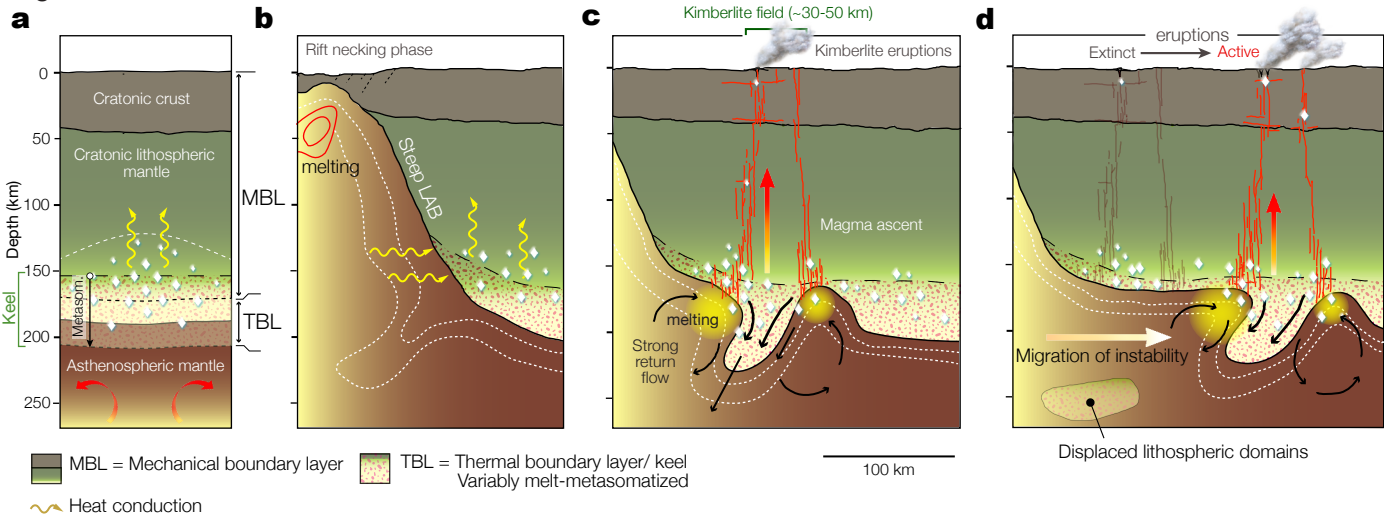


Figure 5



Methods

Relationship between kimberlite formation and craton rejuvenation

The observed relationship between pulses of kimberlite magmatism and episodes of global plate reorganization (Fig. 1) strongly suggests a tectonic mechanism for the generation and mobilization of kimberlite magma. Furthermore, observations that kimberlites are only emplaced on cratons^{1,2,3}, and that kimberlite emplacement is commonly associated with uplift and erosion^{49,55,56}, suggest that kimberlite magma generation may be related to thinning and rejuvenation of cratonic lithosphere. We therefore review mechanisms proposed for thinning the cratonic lithosphere, in order to assess which mechanisms have potential to explain both generation of kimberlite magma by mantle melting, and an association with global plate reorganization.

Lithospheric thinning can be accomplished by erosion of Earth's surface. Cratonic erosion is often associated with kimberlite emplacement^{55,56} but the erosion rates are too slow to drive adiabatic upwelling and consequent melting of the sub-lithospheric convecting mantle. Lithospheric thinning in response to lithospheric extension is a well-understood mechanism of inducing mantle melting by decompression, but the lack of evidence for tectonic extension of cratons means that this mechanism cannot explain kimberlite melting.

The remaining mechanisms for lithospheric thinning involve removal of the lowermost lithosphere, or keel. The keel is inherently quasi-unstable because it is denser than the underlying asthenosphere. Lee et al.²⁹ identified five processes that might critically destabilize and remove cratonic keel, which we now review. Cratonic keel is constantly cooled by conduction through the overlying lithosphere, leading to thickening, destabilization, and convective removal of the keel²⁹. Rayleigh-Taylor instabilities and lithospheric edge-driven convection are special cases of this type of convective removal. The planform and vigour of convective instabilities within the keel are known to be influenced by nearby rifting^{26,27,32}. Until now, it was unclear whether rifting can cause convective removal of keel at large horizontal distances (>200 km). Also, whilst convective instabilities near rifts have been argued to cause melting^{26,28}, it is unclear whether convective instabilities beneath thick cratonic lithosphere can cause kimberlite melting. Cratonic keel is constantly warmed by the underlying asthenosphere. A mantle plume head and/or smaller scale asthenospheric convection cells might locally enhance this warming, leading to weakening and convective removal of keel³³. Thermal weakening might be augmented by advection of heat into the keel if sufficiently large degrees of mantle melting occur. These plume models provide a well-established hypothesis for kimberlite melting, but they do not explain a global association with rifting (Fig. 1). Cratonic keel overlying subduction zones might be destabilized by infiltration of subduction-related fluids and melts, leading to rheological weakening, followed by convective removal³³. Although this mechanism specifically involves melting, it does not explain the lack of arc geochemical signatures in most kimberlites, or the co-location of kimberlites and rifted margins (as opposed to subduction zones). Cratonic keel might be removed by basal traction in response to relative motion between the lithosphere and asthenosphere³³. This mechanism does not provide an obvious cause of melting, and nor can it explain a global association with rifting; for example, motion of the southern African lithosphere relative to the underlying asthenosphere was low throughout the Mesozoic when many of the southern African kimberlites were emplaced (Fig. 1a; Extended Data Fig. 3a). Cratonic keel might undergo sub-horizontal viscous flow that acts to smooth out basal lithospheric topography³³. This speculative mechanism has received little attention, and it does not provide an obvious cause of melting.

This discussion shows that all the suggested processes that can potentially explain both generation of kimberlite magma by mantle melting and an association with global plate reorganization involve convective removal of keel. There are two main open questions. The first relates to the process that causes destabilization, which might involve rifting and/or mantle plumes. The second relates to the relative role of small-scale convection cells and mantle plumes in kimberlite melting. This paper addresses these questions through a combination of observations and modelling.

Kimberlite database

We utilize the kimberlite geochronology database of Tappe et al.⁶, which comprising 1,133 unique occurrences, is one of the most accurate and comprehensive available compilations. Notably, this database shows the same broad temporal distribution (Fig. 1a) as other databases such as that shown in Stern et al.⁵⁷, adapted from Faure et al.⁵⁸. It must be noted, however, that the latter compilation⁵⁸ contains some highly uncertain ages (i.e., where kimberlites are assigned only to a geologic Period and/or there is only 'loose' stratigraphic age control). We thus prefer to use Tappe et al.⁶, which specifies the geochronology method (targeted mineral and isotope system) and, for kimberlites <500 Ma in age, where radiometric age uncertainties have mean, median, and mode values of 6, 4 and 2 Myr,

respectively. Further, this compilation represents every important known kimberlite cluster from each continent, avoiding “over-representing economic clusters that host diamond mines and are therefore more intensively studied”⁶. Our regional case studies apply further caution by using a spatio-temporal clustering approach (detailed below) that ensures statistically consistent criteria are applied to kimberlite distributions on each continent. We append several kimberlite ages which have been made available since the publication of Tappe et al.⁶. Thus, we are confident that our analysis is as complete as is currently possible and can be updated as further age constraints become available.

Statistical analysis of geotectonics and kimberlites

To quantitatively understand the link between kimberlites and continental breakup, we used the Tappe kimberlite database⁶ and a quantitative measure of the degree of fragmentation of the continental plate system over geologic time⁵⁹ derived from plate tectonic reconstructions⁶⁰. This method involves the calculation of a continental perimeter-to-area ratio, whereby during supercontinent stability, the ratio should be low, whereas during assembly and dispersal it should be high⁵⁹ (Extended Data Fig. 1). We applied this method⁵⁹ using an updated set of continental polygons and rotations¹⁷. The model uses a unified set of cratonic polygons for the Neoproterozoic and Phanerozoic and was found to be internally consistent, drawing upon a large synthesis of palaeomagnetic and geologic data and kinematic constraints¹⁷. This fragmentation index is not sensitive to active breakup processes: that is, the value remains high even after supercontinent breakup is complete. To account for this, we next calculated the rate of change of fragmentation (ΔF), which quantitatively captures dynamic breakup processes. We did this by calculating the slope of the regression line using a symmetric, moving window of ± 4 Myr through the fragmentation time series (Extended Data Fig. 1c–d). We next calculated the statistical relationship between the kimberlite distribution (Extended Data Fig. 1a–b) and ΔF . Figure 1b shows the cross-correlation function (CCF) between these two data series computed in R ⁶¹ (using the function *acf* in Stats package) for lags up to ± 150 Myr. *ccf*(x, y) computes the empirical (Pearson) correlations between two time-series x and y at different lags (offsets), where the lag k value is the correlation between $x[t+k]$ and $y[t]$. The dashed line (Fig. 1b) shows the approximate 95% confidence interval $t=0.088$ ($n=500$ observations), calculated using

$$t = qnorm\left(\frac{1+C}{2}\right) \frac{1}{\sqrt{n}} \quad (2)$$

where *qnorm* is the quantile function for the normal distribution, $C=0.95$, and $n=500$.

To further test the estimated ~ 30 Myr lag between changes in fragmentation and kimberlite eruption (Fig. 1b) we incorporated these measures into a Bayesian network using *UNINET*⁶², a software package for high dimensional-dependence modelling, previously used for analysis of tectonic and geochemical processes across different spatial and temporal scales¹⁸. We constructed a Bayesian network to calculate conditional rank correlations at increasing lags from 0 to 50 Myr. Unlike the standard CCF, this accounts for the prior effects of shorter lags, similar to the partial auto- or cross-correlation. Inputs are a 1 Myr time-series for the kimberlite count (K_t) from 500 Ma to present (i.e., number of recorded kimberlite events per Myr), and ΔF at lead times 0–50 Myr before kimberlite eruption (in increments of 5 Myr). The average rate of change at a given point in time is the slope of the regression line from a symmetric, moving window of ± 4 Myr.

As we are interested in the correlation of (lagged) ΔF with K_t , and wish to remove the effects of shorter lags at each step (see ref.¹⁸), we define the Bayesian network node hierarchy as: $\Delta F_t, \Delta F_{t-5}, \Delta F_{t-10}, \dots, \Delta F_{t-50}, K_t$; where ΔF_{t-5} is the time-series for ΔF offset by $t-5$ (i.e., ΔF leading K_t). These nodes are used to construct a saturated BN: a network in which each node is connected by an arc to every other node in the network. Using *UNINET*, we can then compute the rank correlation of ΔF_t and K_t (lag 0), the rank correlation of ΔF_{t-5} and K_t conditional on ΔF_t , the rank correlation of ΔF_{t-10} and K_t conditional on ΔF_t and ΔF_{t-5} , etc. The output from *UNINET* (Extended Data Fig. 2a) is the unconditional (Spearman) rank correlation for the first pair of nodes (with no lag), and conditional rank correlations for subsequent nodes (i.e., accounting for the conditional dependence on nodes higher up in the network hierarchy; see ref.¹⁸). As Kurowicka and Cooke⁶³ (p. 33) state: “The conditional correlation of Y and Z given X is the product moment correlation computed with the conditional distribution of Y and Z given X”, or

$$\rho_{YZ|X} = \rho(Y|X, Z|X) = \frac{E(YZ|X) - E(Y|X)E(Z|X)}{\rho(Y|X)\rho(Z|X)} \quad (3)$$

This method gives a peak conditional rank correlation (0.51) at ~ 25 Myr (with an uncertainty of approximately ± 4 Myr due to the moving window used to calculate ΔF), in keeping with the results of modelling and observations (Extended Data Fig. 2a). We repeated this procedure to analyze the relationship between ΔF and large igneous provinces (LIPs) using the well-established ages of LIP magmatism²⁵ (Extended Data Fig. 6). Here, the input is a 5 Myr resolution series, where *LIPstart* is the total number of LIP events with a start date falling in each 5 Myr interval, and ΔF is the slope of the regression line for continental fragmentation (over a 9 Myr window) again estimated every 5 Myr. Using a simple saturated BN, we compute the correlation of ΔF and *LIPstart*, or $\text{corr}(\Delta F, \text{LIP})$ — i.e., where *LIPstart* precedes ΔF (Extended Data Fig. 6b).

Spatial and temporal links between breakup and kimberlites

We next evaluated the spatial and temporal relationship between continental breakup and kimberlite magmatism, taking Mesozoic Africa and South America (affected by the same Gondwana breakup episode) as a case study where data confidence (e.g., kimberlite ages and rifting history) is high. We utilized the same kimberlite database⁶ as in our global analysis above, adding several radiometric ages for the Brazil region^{64,65,66,67,68}. Paleogeographic reconstructions were obtained from the open-source plate tectonic modelling software, *GPlates*^{23,69}.

To mitigate spatial biases in the data, we undertook a spatio-temporal cluster analysis of the kimberlite fields. Clusters are defined as groups of kimberlites that are close enough in space and time that they could plausibly be attributed to the same initiating event. By using a clustering approach, we mitigate the over-representation of similar ages within geographically restricted areas. This eliminates some of the reporting bias in the catalogue, as eruptive products are more likely to be identified and radiometrically dated in proximity to previously discovered kimberlites.

For purposes of this analysis, a kimberlite is defined as being part of a cluster if there is another recorded event within ± 5 Myr, and a 25 km radius. Not all kimberlites are clustered (Extended Data Fig. 3a). We chose a 25 km radius as this is considered to represent a lower diameter length scale of kimberlite fields at the surface⁴². Because kimberlite eruptions are generally considered to be rapid and short-lived (with inferred durations of hours to months²), our time window of 5 Myr is principally intended to capture uncertainties in radiometric ages (± 2.5 Myr), which is considered representative for kimberlites of Mesozoic age (i.e., a modal age uncertainty of ± 2 Myr applies for kimberlites younger than 500 Ma (refs.^{6,70})).

To perform spatio-temporal clustering we used the *R* packages *sf*⁷¹ (for handling spatial vector data), *sp* (further classes and methods for spatial data), and *geosphere*⁷² (for spherical trigonometry). We first converted the longitude/latitude point coordinates of each kimberlite observation to an *sf* object, then convert from *sf* to a spatial points object (*sp*). We used the *distm* function (from *geosphere*) to calculate a matrix of distances between all pairs of kimberlites in the catalogue (i.e., the shortest distance on the WGS84 ellipsoid). We also generated a matrix of time differences (*dt*) between each pair of kimberlites (using their radiometric ages⁶). The method to allocate clusters is defined as follows:

1. Step through each kimberlite in the catalogue K_i , for $i=1:n$ (where n is the total number of kimberlites).
2. Identify any additional kimberlites K_j , $j=(i+1):n$ where the distance between K_i and K_j is ≤ 25 km and the time lag $\text{abs}(dt)$ is ≤ 5 Myr. If any K_j meets these criteria, they are added to the current cluster. If K_i has no ‘neighbours’ meeting both conditions, it is not clustered.
3. For each kimberlite K_j added to the cluster, we search for any subsequent kimberlites, K_m , $m=(j+1):n$, within a distance ≤ 25 km and absolute time lag $\text{abs}(dt) \leq 5$ Myr relative to K_j . This allows the cluster to expand beyond the original radius but eliminates any potential for multiple/overlapping clusters.

This procedure ensures every kimberlite is counted precisely once, either as part of a cluster, or alone (if it is greater than 25 km and 5 Myr from any neighbours).

Next, we measured the shortest distance and time lags between kimberlites and the margins of neighbouring, coeval rift systems—using the mapped extent of continent-ocean boundaries (COBs) through time⁶⁰ (Extended Data Fig. 3a) and their associated breakup ages^{23,69}. Using the clusters defined above, we can then calculate the average distance and average time lag for each cluster.

As there are multiple boundary sections with breakup occurring at different times, we applied some simple rules to determine distance and lag. The COB shapefile comprises polylines with an attribute *RiftAge* denoting the age of continental separation of each rift section. We focused our attention on the major rift systems adjacent to the

kimberlites: the Africa-Madagascar/Africa-Antarctica, the South Atlantic, and the Central Atlantic, with the latter two relating to both African and South American kimberlite fields (Extended Data Fig. 3a). We also consider those rift systems bounding the North American kimberlite fields: the Central Atlantic, Greenland–North America, and Arctic region (Alaska–northern Canadian margin)²⁴.

For each kimberlite, we calculated: (i) the shortest distance d from the kimberlite to each individual COB line segment; and (ii) the time lag l between breakup time (for each COB line segment) and the kimberlite catalogue age. Lags can be negative, with eruption occurring before breakup, or positive, where eruption occurs after breakup (Figs. 1c–d). Distances were calculated using *dist2Line* function from the *R geosphere* package, which gives the shortest distance (in meters) between points and polylines or polygons with longitude/latitude coordinates on the WGS84 ellipsoid.

This approach leads to multiple COB line segment associations $\{d_{ij}, l_{ij}\}$ defined as a distance d and lag l for all kimberlites i and COB segments j within a region. However, we are interested in identifying the most likely association for each kimberlite—the closest in time and distance. We firstly eliminate any cases of kimberlite eruption occurring more than 40 Myr before continental breakup (removing any associations with $l_{ij} < -40$). This focuses the analysis on kimberlites that formed during rift-related thinning of lithosphere and initiation of convective instabilities, as well as after breakup itself. We chose 40 Myr as an appropriate cut-off based on (i) inspection of the cross correlation between global kimberlite occurrence and continental fragmentation (Fig. 1b); and (ii) the observation that rifting tends to lead breakup by 30–40 Myr (refs.^{19,24}).

Secondly, we eliminated any cases with lags >60 Myr ($l_{ij} > 60$) after breakup, as we are primarily interested in the ~ 100 Myr interval after rift onset. For Africa and South America, breakup is estimated to occur between 6 and 40 Myr after rift onset²⁴. The global cross correlation between fragmentation and kimberlite eruption falls below the 95% confidence interval (CI) ~ 60 –70 Myr after continental fragmentation, supporting this as a cut-off point. Thirdly, we impose a maximum distance of 2,000 km (eliminating $d_{ij} \geq 2e6$ m), capturing the craton-scale for Africa and South America (Extended Data Fig. 3a).

We finally eliminated any duplicate cases (where a kimberlite is associated with more than one rift section) by prioritizing shorter absolute lags. This means each individual kimberlite is only counted once, and associated with a single rift section. This procedure yields a dataset of kimberlite locations (point coordinates), eruption age, lag, and distance to a single (most likely) associated COB. We then use this information to calculate the average age, time lag to breakup, and continent-ocean boundary distance for each cluster. Data for the kimberlite clusters are shown in Figs. 1c–d and Extended Data Figs. 3c,d.

Kimberlite migration rates

To estimate the initial rate of kimberlite migration into the cratonic interior, we initially used the general apparent increase in distance between rifted margins and kimberlites in the tens of Myr following rift onset (Fig. 1c; Extended Data Fig. 3c). Our data show that kimberlites typically first appear >200 km inboard of rifted margins (Fig. 1c). This is possibly because they can only form where the craton is sufficiently thick (≥ 150 km; Extended Data Fig. 3a,b) for diamonds to be stable⁵⁴ and chemical conditions in the basal lithosphere to be optimal for kimberlite generation (Fig. 3b). For instance, the surface boundary of the Kaapvaal Craton is located ~ 400 km inboard of the South Atlantic rift⁷³, and thickens towards the east. Kimberlite magmatism therefore initiates some distance (i.e., typically several hundred kilometers) inboard of rifted margins.

Uncertainty analysis

To account for uncertainties in kimberlite age, estimated rift location, and rifting age, we repeat the above analysis as a Monte Carlo simulation of 5,000 runs. Using ages and uncertainty estimates⁶, kimberlite age is sampled from a uniform distribution on the interval $[a_i - e_i, a_i + e_i]$ where a_i is the age and e_i the estimated uncertainty of each kimberlite i . Age uncertainties are typically assumed to be more centrally distributed (e.g., normally distributed), however there are not sufficient data to robustly parameterize a distribution for each individual kimberlite/dating method in the database. By choosing a uniform distribution, we take a conservative approach to error estimation.

Breakup age (for each individual rift section) is sampled from a uniform distribution $[b_m - 0.025b_m, b_m + 0.025b_m]$ where b_m is the rift breakup age (i.e., an uncertainty of $\pm 2.5\%$ of the original age estimate to reflect uncertainties in tectonic reconstructions¹⁸).

For a set of regional kimberlites, the uncertainty in estimated distance to a rift section is spatially correlated. This is because rift sections form/propagate as a connected, broadly linear structure, and the relative positions of the kimberlites are not affected by uncertainty in the rift location. To preserve these spatial properties, we model uncertainty in rift location by sampling an offset distance (in km) from a uniform distribution on the interval [-90, 90] km for each rift section in turn. This value was chosen since continent-ocean boundaries (COBs) are zones rather than precise linear boundaries, and the global mean half-width of the COB ‘transition’ zone is ~90 km (ref.⁷⁴). For each iteration of the Monte Carlo simulation, the sampled offset is applied to the estimated distances from the set of kimberlites in the region to that rift section. This effectively moves the entire rift section closer or further away from the continental landmass by a random amount at each iteration. Within a single iteration, the spatial relationship between kimberlite points is preserved, giving a more robust representation of the true uncertainty.

Incorporation of North American kimberlite data, and uncertainty in rift association

To expand the analysis to include kimberlites in North America, it was necessary to modify our methods to accommodate longer timescales and distances. For North America, typical distances between rift margins and kimberlites in the continental interior are greater. This can lead to longer migration times from the rift boundary (COB) to the point of eruption, and longer lags. In North America, breakup, which commenced in the Lower Jurassic, is estimated to have occurred approximately 10–76 Myr after rift onset²⁴, longer than for South America and Africa (where breakup occurred about 6–40 Myr after rift onset²⁴). We therefore need to consider a wider window of time, both pre- and post-breakup.

To implement this, we define an additional measure — lag relative to rifting (l_r). This lag, in conjunction with the computed rift-kimberlite distances (d), can more easily accommodate the variation in timescales between rifting and breakup, and, more importantly, can be used to directly estimate migration rates $r = d/l_r$ where r is the rate (km/Myr).

We set some basic constraints to focus on the range of plausible rift-kimberlite associations within any given region. The maximum distance for association was increased to 3,000 km. We extended the time window, using lag relative to rifting as the base measure, and limit associations to kimberlites erupted at or after the onset of rifting (but not prior to rifting), within the bounds of known age uncertainties. We additionally limit migration rate (r) to 100 km/Myr, to avoid making highly unlikely associations between rift activity and very distant kimberlites within a short time window. These conditions, applied jointly, enable us to capture the full range of plausible rift-kimberlite associations.

For each rift and kimberlite pair, we calculate (a) the distance d ; (b) lag relative to breakup l_b and lag relative to rifting l_r , and (c) migration rate r . As before, this yields multiple potential rift associations for each kimberlite. After applying the lag and distance constraints outlined above, we then identify, for each kimberlite, (i) the rift section with the shortest absolute lag relative to breakup l_b , “min lag”, and (ii) the rift section with the shortest distance, “min dist”. By considering these two ‘end member’ models of association, we can provide a reasonable estimate of the model uncertainty in our estimates for distance, lags, and migration rate; i.e., we are considering the range of possible initiating rifting events for each kimberlite in the analysis.

As before, we apply Monte Carlo simulation to capture uncertainty in kimberlite age, rift age, and rift/COB distance (see method outlined above).

For each region (Africa, North America, and South America) we generate an ensemble of 5,000 runs, generating a set of distance, lag, and migration rates for each kimberlite, using both “min lag” and “min dist” models of association. Results are presented as a probability density plot (Fig. 1e), capturing both model and data uncertainty for migration rate (Supplementary Dataset 2). Extended Data Figure 4 presents probability density plots for the two individual end member association models (“min lag” and “min dist”) for (a) the kimberlite clusters (Supplementary Dataset 2), and (b) individual kimberlites, for all three continents combined.

This analysis, incorporating age, distance, and model (kimberlite-rift association) uncertainty, gives the following migration rate estimates for North America, South America, and Africa:

- Clustered data: median 20.7 km/Myr, 10–90 percentile range of 5.6–58.8 km/Myr;
- Individual kimberlites: median 25.0 km/Myr, 10–90 percentile range of 6.3–60.4 km/Myr.

This variability is to be expected, due to the complex temporal and spatial distribution of rifts, and their relation to kimberlites. We take a conservative approach to model uncertainty by considering the two end member cases for

initiating kimberlite eruption — evaluating migration rates for rifting events closest in both space and in time. This approach gives robust upper and lower bound estimates of migration rate for the three major global kimberlite regions.

Our analysis uses 87.5% of all kimberlites younger than 240 Myr old (i.e., erupted since the onset of Pangaea breakup).

Relationship between kimberlites and lithospheric thickness

We analyzed the relationship between lithospheric thickness and kimberlite occurrence (Extended Data Fig. 3a–b) using the LITHO1.0⁷⁵ and LithoRef18⁷⁶ models of the crust and lithosphere. We performed this analysis using open-source GIS software *QGIS* (v 3.16; <https://qgis.org/>) with additional open-source *GRASS GIS* processing tools (<https://grass.osgeo.org/>). Starting with a vector point map of lithospheric thickness from LITHO1.0, we performed a surface interpolation with regularized splines under tension, using the *GRASS* function, *v.surf.rst*, to generate a 0.1° cell size raster map of lithospheric thickness. We then used the ‘Point Sampling Tool’ *QGIS* plugin to obtain lithospheric thickness (Extended Data Fig. 3b) at each kimberlite location from the interpolated raster map (Extended Data Fig. 3a). Using LITHO1.0, and focusing on the younger subset of kimberlites (<250 Ma; $n = 722$), we obtain relatively high lithospheric thicknesses (mean = 207 km; Extended Data Fig. 3b).

As a sanity check, we tested another, more recent global reference model of LAB depth (LithoRef18) derived by joint inversion and analysis of multiple datasets⁷⁶. This model shows the major peak in kimberlites corresponding to lithospheric thicknesses of 160–170 km (overall mean = 167 km) — clearly lower than those of LITHO1.0 (Extended Data Fig. 3b). Both models indicate that most kimberlites are associated with cratonic lithosphere 150–250 km thick, though we favour the lower end of this range for the majority of cases (Extended Data Fig. 3b).

Scaling analysis of Rayleigh-Taylor instability chains

Motivated by the observation that kimberlite magmatism typically migrates laterally over time (Figs. 1c,e), we investigated whether an initial convective instability in the basal lithosphere can trigger further instabilities in an organized manner. We first developed a simple physical model for spatial and temporal organization within a series of Rayleigh-Taylor instabilities based on analytical models for individual instabilities, and derived a scaling law for the lateral propagation rate of an instability chain.

The thermal boundary between the lithosphere and asthenosphere can be represented by a simple model of a viscous fluid layer of thickness b representing lithospheric keel that overlies a less dense viscous fluid representing asthenospheric mantle³³. Analytical solutions for Rayleigh-Taylor instability are available for a starting situation where the interface between the two fluids has a sinusoidal displacement of horizontal wavelength λ and amplitude w_0 , and $w_0 \ll \lambda$. The amplitude of an instability grows as

$$w = w_0 e^{qt} \quad (4)$$

where q is the growth rate and t is time. The solutions give the scaled horizontal wavelength of the fastest growing instability, λ_d^* , and the corresponding scaled growth rate, q_d^* . For the geologically relevant solutions of interest, λ_d^* is 2–4 and q_d^* is of order 10^{-1} (Extended Data Table 1).

To apply these analytical solutions, note that length is scaled by the mean starting layer thickness, b , and time is scaled by $\nu/g'b$, where ν is the kinematic viscosity, $g' = g\Delta\rho/\rho$ is reduced gravity, $\Delta\rho$ is the difference in density between the upper and lower layer, and ρ is the reference density. Hence the dominant wavelength of lithospheric root instabilities is

$$\lambda_d = \lambda_d^* b \quad (5)$$

and the characteristic time period for growth of the dominant instability is

$$\tau_d = \frac{\nu}{q_d^* g' b} \quad (6)$$

Now we consider a single instability of dominant wavelength. Since τ_d is a e -folding time, soon after $t = \tau_d$ the instability will achieve terminal downward velocity, detach from the upper layer and sink into the lower layer. Since fluid has been removed from the upper layer, the new thickness of the upper layer will be $<b$ above the site of

the detachment, and the wavelength of the thinned patch of the upper layer will be $\sim \lambda_d$. This situation resembles the original initial condition, and equation 4 with $w_0 \sim b$ predicts growth of the resulting instabilities. Thus, new instabilities will develop at horizontal distances $\pm \lambda_d$ relative to the initial instability. If this process repeats, the second-generation instabilities will grow, detach and trigger third-generation instabilities. Because this is a convective process, second-generation instabilities grow and detach before the thinned patch of upper layer above the initial instability can regain its original thickness by conductive cooling and thickening. Hence, the topographic gradient on the base of the upper layer will be greater above the outer edges of the second-generation instabilities, relative to the initial instability. Thus, third-generation and later instabilities will be initiated at progressively greater distances from the initial instability.

This simple physical model predicts that an initial Rayleigh-Taylor instability should initiate a chain of further instabilities, in which successive instabilities occur at horizontal distances of $\sim \lambda_d$ outboard of the initial instability with a periodicity of $\sim \tau_d$. The lateral propagation rate of this chain of events is therefore expected to scale as

$$U \sim \frac{\lambda_d}{\tau_d} \quad (7)$$

Substituting equations 5 and 6 gives

$$U \sim \lambda_d^* q_d^* \frac{g' b^2}{\nu} \quad (8)$$

which shows that U scales as b^2 . Typical values for U are plotted in Fig. 3a and shown in Extended Data Table 1. The values of g' and b were estimated by fitting geotherms to xenolith P - T data (see below). A viscosity of $4 \times 10^{15} \text{ m}^2 \text{ s}^{-1}$ has been used previously for modelling the basal lithosphere, including in xenolith geotherm modelling^{77,78}, and we find that this value gives a good match between our scaling law, numerical models, and observed migration rates of kimberlite magmatism (Figs. 1c,e & 3a; Extended Data Fig. 3c).

Thermo-mechanical models

To advance on the above footing, we assessed the influence of the more complex natural geometry and rheology of rifting cratonic lithosphere, using numerical forward models conducted using the finite element code *ASPECT*^{79,80,81}. These models solve the conservation equations of mass, energy, and momentum for materials with visco-plastic rheology⁸². In particular, we account for temperature, pressure, and strain-rate dependent rheologies based on experimentally derived flow laws for dislocation and diffusion creep combined with plasticity (Extended Data Table 2). Our model is kinematically driven through velocity boundary conditions at lateral sides. The model reproduces the formation of a narrow rift that is bounded at depth by steep LAB gradients resulting in pronounced rotational flow patterns²⁷. This flow destabilizes the base of the thermal lithosphere (cratonic keel) producing Rayleigh-Taylor instabilities that evolve self-consistently by sequential destabilization. In further agreement with previous models, breakup is delayed due to rift migration⁸³.

We will now briefly describe the geometrical, mechanical and thermal setup of our geodynamic model, as well as its limitations. For a more detailed description of *ASPECT*'s functionalities and solution techniques we refer the reader to refs. ^{79,80} and <https://aspect.geodynamics.org/manual.pdf>.

The model comprises a domain of $2,000 \times 300 \text{ km}$ and 800×120 elements in the x (horizontal) and y (vertical) direction, respectively. The second order finite elements are visualized by dividing them into four squares leading to an effective resolution of 1.25 km. The model comprises four layers: 20 km thick upper crust, 15 km thick lower crust, 125 km thick mantle lithosphere, and 140 km thick asthenosphere (i.e., beneath 160 km depth). We use a wet quartzite⁸⁴ and wet anorthite⁸⁵ flow law for upper and lower crust, respectively, dry olivine rheology⁵³ for the mantle lithosphere, and wet olivine⁵³ for the asthenosphere. The model involves frictional strain softening, where we linearly reduce the friction coefficient with a factor of 0.25 for brittle strain between 0 and 1. For strains >1 , it remains constant. We also account for viscous strain softening by decreasing the viscosity derived from the ductile flow law with a factor of 0.25 between viscous strains 0 and 1. All rheological and mechanical model parameters are provided in Extended Data Table 2. For visualization purposes, we distinguish a 30 km thick layer beneath some parts of the lithosphere as a simplified representation of variably metasomatized thermal boundary layer of the lower lithosphere. To initiate rifting in a predefined area, we use a 25 km thick upper crust and 100 km thick mantle lithosphere representing typical

mobile belt conditions⁷⁵. The above layer thicknesses gradually transition to ambient lithosphere over a distance of ~ 200 km.

We employ velocity boundary conditions with a total extension velocity of 10 mm per year. For simplicity, we keep the right-hand model side fixed, but we verified that the conclusions do not change if extension velocities are symmetrically distributed between the lateral boundaries. At the bottom boundary, we prescribe a constant vertical inflow of material that balances the outflow through the lateral model sides. The top boundary constitutes a free surface⁸¹.

Temperature boundary conditions feature a constant surface temperature of 0 °C and a bottom temperature of 1,420 °C, i.e., normal temperature mantle with potential temperature c. 1320°C. Lateral boundaries are thermally isolated. The initial temperature field of each model column results from the 1D thermal equilibrium defined by the boundary conditions, the crustal radiogenic heat contribution, and the initial depth of the thermal LAB, i.e., the 1,350 °C temperature isotherm, which at first coincides with the compositional LAB. The sub-lithospheric temperature increases adiabatically with depth. To smooth the initial thermal gradient across the LAB, we equilibrate the entire thermal state of the model for 30 Myr before the onset of extension. All thermal parameters are listed in Extended Data Table 2.

The following model limitations have to be kept in mind when interpreting the results. In this model, we focus on first-order thermo-mechanical processes and do not explicitly account for chemical alterations, melt generation, and magma ascent (i.e., these are not ignored, but are considered separately using different approaches). For simplicity, we assume that the initial depth of the LAB does not vary on the thousand-kilometer scale. Nonetheless, we conducted additional model runs with gradual changes in LAB depth and the conclusions remained the same. Additional effects like large-scale flow patterns related to mantle convection, the impingement of mantle plumes, and along-strike lithospheric heterogeneities may exert local effects on the formation of Rayleigh-Taylor instabilities that we have to neglect in our generic modelling strategy.

Sublithospheric viscosity and in particular activation energy constitute important parameters for the development of instabilities⁸⁶. In agreement with observations of seismic anisotropy in the upper mantle, shallow asthenosphere viscosity in our models is dominated by dislocation creep, where we use experimentally derived wet olivine activation energy values of 480 ± 40 kJ/mol (ref.⁵³) that are representative for the shallow asthenosphere. Notably, these values for dislocation creep lie within the independently derived activation energy range of 360–540 kJ/mol (ref.⁸⁶). We conducted alternative modelling runs where we varied the asthenospheric activation energy within experimental uncertainties while keeping all other parameters identical. When we lower the activation energy to 440 kJ/mol, the shallow asthenosphere and thermal boundary layer exhibit a viscosity that is about 2 times smaller than for the reference case. This model generates lateral propagation/migration rates for the instabilities that are roughly 2 times larger than for the reference model, which is in agreement with analytical Model 3 that constitutes the low-viscosity end-member of the analytical modelling suite (Fig. 3a).

Xenolith geotherms

To estimate the typical thickness, temperature, and density of the thermal boundary layer between the lithosphere and asthenosphere—for application in the delamination and melting calculations—we applied the numerical geotherm calculation approach of Mather et al.⁷⁷, which uses peridotite P - T estimates from various kimberlites. We utilized the *FITPLOT* programme (refs.^{78,87}), which takes the thickness and thermal properties of the crust as inputs, and determines the thicknesses of the rigid lithospheric mantle and the basal lithospheric thermal boundary layer by minimizing the misfit between the calculated geotherm and the xenolith P - T data. Full details of this method and the xenolith datasets used are provided in ref.⁷⁷. Calculated geotherms and thermal boundary layer thicknesses are plotted in Extended Data Fig. 8. The total thickness of the thermal boundary layer is estimated to be 35 km. The corresponding thickness of the unstable viscous layer, b , that should be used in the analytical Rayleigh-Taylor instability models is approximately half this value, i.e., 17.5 km, since the LAB sits near the middle of the thermal boundary layer (Extended Data Fig. 8). The temperature change across the thermal boundary layer, ΔT , is ~ 150 °C. Thus, the mean density contrast that drives Rayleigh-Taylor instabilities is $\Delta\rho = \rho\alpha\Delta T/2 = 10 \text{ kg m}^{-3}$, where $\alpha = 4 \times 10^{-5} \text{ C}^{-1}$ is the thermal expansivity⁷⁸, $\rho = 3,300 \text{ kg m}^{-3}$ is the reference density, and $\Delta T/2$ is the mean temperature difference relative to the asthenosphere. The corresponding reduced gravity is $g' = 0.03 \text{ m s}^{-2}$, which was used in the analytical Rayleigh-Taylor instability models with a constant-density upper layer (models 1, 2, 3 and 6 in Fig. 3a and Extended Data Table 1). A value of $g' = 0.06 \text{ m s}^{-2}$ was used for the analytical models with linearly decreasing density (models 4 and 5),

so that all the analytical model results in Fig. 3a and Extended Data Table 1 have the same mean driving density. This driving density contrast is a lower bound because it does not include possible metasomatic density increases within the upper thermal boundary layer, but even without compositional effects it is sufficient to drive convective removal of lithospheric keel (Figs. 2, 3a).

Melting calculations

Neither the analytical modelling of Rayleigh-Taylor instability chains, nor the numerical modelling carried out in *ASPECT*, directly predicts where and when melting occurs. However, both analytical and numerical models show that convectively driven lithospheric delamination will result in adiabatic upwelling that could potentially cause mantle melting. In the analytical models, the terminal velocity of an individual isolated downwelling Rayleigh-Taylor instability in the lithospheric keel is expected to approximate the Stokes velocity for a sphere of radius λ_d , which is $g'\lambda_d^2/3\nu$ (ref.⁸⁸). We assume that the upward return flow exactly balances the downwelling, and occurs in a cylindrical annulus of width $2\lambda_d$ that surrounds the downwelling plume. With this geometry, the cross-sectional area of the upwelling annulus is 8 times that of the downwelling plume, so the mean upwelling velocity will be 1/8 of the downwelling velocity. The mean upwelling velocity is therefore expected to be

$$V = \frac{g'\lambda_d^2}{24\nu} \quad (9)$$

The upwelling velocities estimated for the Rayleigh-Taylor instability models considered here are a few 10s of km yr^{-1} (Extended Data Table 1). The thermal Péclet number for the upwelling flow is estimated using

$$Pe = \frac{bV}{\kappa} \quad (10)$$

where κ is the thermal diffusivity, and $b = 17.5 \text{ km}$ is the net upward motion of the return flow, equivalent to half the thickness of the keel layer that detaches (see ‘Xenolith geotherms’). The predicted Péclet numbers are ~ 10 (Extended Data Table 1), which suggests that upwelling will be adiabatic, meaning that the return flow should not lose significant heat as it approaches the base of the thinned lithosphere. Thus, if part of the detached lithospheric keel becomes entrained in the upward return flow, it can move to a new depth beneath the thinned lithosphere that is shallower than its original depth, whilst maintaining its original potential temperature. Decompressional melting can potentially occur in this situation if sufficient volatiles are present. If rifting and continental break-up organizes the downwelling patches to resemble a detaching sheet with little along-strike variation, then the factor in the denominator of equation 9 would be 9 rather than 24. In this case, the return-flow upwelling would be stronger, and still more likely to be adiabatic and to cause melting.

The *ASPECT* modelling confirms the expectation of adiabatic upwelling, and indicates the relative locations and strengths of the convective upwellings through time (Extended Data Fig. 9). The strongest convective upwelling at any time is always associated with the leading convective instability in the propagating chain. The leading cell has two upwelling regions, one on either side of the central downwelling. The upwelling closer to the rift is the stronger of the two, though both upwelling regions are adiabatic and can potentially drive melting (subject to additional conditions). Typical upwelling velocities in the leading cell are $\sim 30 \text{ km yr}^{-1}$, in agreement with the analytical model. Earlier convection cells in the propagating chain remain visible to the rift-ward side of the leading cell. Circulation in the older cells is weaker than in the leading cell, but may still be adiabatic.

Another factor needed to enable decompressional melting of normal temperature mantle beneath thick cratonic lithosphere is that the upwelling mantle is enriched in volatiles. We have already demonstrated that the thermal boundary layer, which we propose is convectively removed by propagating instabilities, likely contains both hydrous and carbonate-rich incipient silicate melts (Fig. 3b). The *ASPECT* modelling shows that this volatile-enriched, metasomatized keel detached by the downwelling limbs of the small-scale convection cells is partially recirculated in the upwelling limbs. The upwelling limb on the rift-ward side of the leading convection cell contains most recirculated keel, together with a significant component of background asthenospheric mantle. Older convection cells may also contain volatile-enriched material but with a greater proportion of asthenospheric material. We note that the detailed spatio-temporal pattern of recirculated keel material is difficult to interpret because the convection cells interact with the bottom of the computation box at 300 km. Nevertheless, the *ASPECT* modelling shows adiabatic upwelling of

asthenosphere that is variably enriched with recently detached metasomatized keel material. Thus, it is feasible to infer that migration of the instability chain will potentially be accompanied by kimberlite melting. The bulk of melting is predicted to occur across the footprint of the leading convection cell in the instability chain, and smaller fluxes of melting in the wake of the leading instability may be expected in some cases.

To determine whether this inferred mechanism of melting can explain kimberlite occurrences, we estimated the characteristic volume of melting associated with convectively driven upwelling of mantle at the base of thick lithosphere. We assumed adiabatic upwelling of normal mantle temperature (potential temperature of 1,300°C) and calculated the degree of melting as a function of depth to the base of the rigid lithosphere (i.e. mechanical boundary layer), and also the H₂O content of the primary melt, for adiabatic upwelling of mantle with bulk water contents of 0.1, 0.15, and 0.2 wt% (Fig. 3c). We used the hydrous decompressional melting parameterization of Katz et al.⁴⁷ for these calculations, as (a) it is a well-known parameterization underpinned by a large database of experimental petrology results; and (b) it is a parameterization of volatile-rich melting, which is relevant to the kimberlite mantle source, which most agree is enriched in volatiles including H₂O (refs.^{1,2,3,15,41,45,46}). The calculation and plotting scripts for all the calculations described below are freely available (see Code Availability).

We first calculated the degree of melting to a given depth for an adiabatic melting column with various bulk water contents (Fig. 3c). We used the MORMEL package (<https://github.com/smj75/mormel>) as a convenient implementation of the chosen hydrous melting parameterization. Our calculations predict that convective removal of keel followed by adiabatic upwelling up to depths between 190 and 150 km of a keel/asthenosphere mixture with bulk water content of 0.1 to 0.2 wt% yields low-degree decompressional melting (< 1%), which is consistent with expectations for kimberlites⁴². We also plotted the associated cumulative total melt productivity for such melting (Fig. 3c), to compare with kimberlite magma volume estimates based on surface observations. We assumed an upwelling rate of 30 km yr⁻¹ within the adiabatic melting column, which is typical of the upwelling limbs of the convection cells in our geodynamic models. Melt productivities of up to 0.15 km yr⁻¹ for a 1d vertical upwelling column are predicted when mantle source with bulk water contents of 0.1 to 0.2 wt% wells up to 150 km. Thus we infer that if decompression generates a mean 1d melt productivity of 0.1 km yr⁻¹ across a footprint comparable to that of a typical Rayleigh-Taylor instability, with diameter 50 km and footprint area c. 2,000 km², then a total magma volume flux of 200 km³ yr⁻¹ could result. This flux is broadly consistent with estimated volumes for kimberlite clusters⁴¹ and demonstrates that the system is not limited by magma production at depth. The predicted melt flux could be higher if melt from convection cells in the wake of the leading cell is also considered. Our calculations also show that kimberlite melting can occur in the absence of plumes; yet more melting would be expected in cases where plumes are present.

Where hydrous, carbonate-bearing peridotites are involved in melting, H₂O is expected to be present above the reduced solidus, within the thermal boundary layer of keel (Fig. 3b,c). We calculated the total water content of the melt for the decompressional melting scenarios above (Fig. 3c) using the equation of ref.⁴⁷. Our calculations predict between 9–14% H₂O in the melt (Fig. 3c), following partial to full convective removal of lithospheric keel. This range overlaps the estimated compositions in Table 1 of Sparks et al.⁴⁶, but we would expect our calculation to provide an upper limit rather than an estimate for H₂O content in the erupted melt. The composition of the primary melt is expected to evolve substantially during ascent, and is not expected to match the composition of the erupted magma: some H₂O will be lost from the melt by exsolution and by reaction with wall rocks and xenoliths as the melt ascends over 150 km through the lithosphere⁴⁶. In general, the high volatile contents and low melting degrees predicted by our simple calculations are in line with more detailed compositional calculations and petrological experiments on model systems^{45,46}.

Phase diagrams and phase equilibria

We investigated phase equilibria to determine whether the conditions expected in the thermal boundary layer (Fig. 3b,c) should give rise to melting, specifically in cases where the layer is disturbed by a migrating convective instability (Fig. 2; Extended Data Fig. 9). Because our principal motivation here is to establish the *P-T*/chemical conditions immediately prior to melting onset, we do not focus on melts of kimberlite-like composition; in our framework, these represent the net product of melting induced by convective instability. Rather, we consider phase equilibria for peridotites (Fig. 3b) which dominate the cratonic keels. We consider experimentally determined solidi for peridotites under oxidized and reduced conditions³⁰. Because a large body of theoretical and petrological evidence supports high CO₂ and H₂O contents for erupted kimberlites^{1,2,3,45,46}, we include the oxidized solidus for peridotite in the presence of CO₂ + H₂O, first defined by Wallace & Green⁹⁰ (see refs.^{91,92} for further discussion) and subsequently

extended to higher pressures by Foley et al.⁹³ and Pintér et al.⁹⁴. We also incorporate the reduced solidus for peridotite in the presence of CH₄ + H₂O, which was experimentally defined by Taylor & Green⁹⁵ (see refs.^{91,92}). We plot the graphite–diamond phase boundary experimentally defined by Day⁵⁴. The phase equilibria show that at P - T conditions considered typical of the thermal boundary layer, and under expected conditions, incipient melts containing both CO₂ and H₂O are expected to be present. This is supported by fluid inclusions in diamonds, which show that some hydrous and carbonatitic fluids may be in equilibrium in the diamond stability field⁹⁶.

Although we are primarily concerned with melting of carbonated and hydrous mantle peridotite, for completeness we also consider the CMAS-CO₂ model system of Dalton and Presnall⁹⁷, as this system is commonly implicated in generating melts of carbonatitic, kimberlitic, and melilitic composition⁴³. Using a number of representative experimental melt compositions (i.e., JADSCM-7 and JADSCM-14) from Gudfinnsson and Presnall⁴³, we can confirm that the carbonate-bearing lherzolite solidus falls within the thermal boundary layer of the lithosphere—demonstrating that for the CMAS-CO₂ system, generation of incipient carbonate melts is expected to occur in the thermal boundary layer.

We plotted estimated P - T conditions of lherzolite/peridotite nodules from Baptiste et al.⁹⁸ in Extended Data Fig. 7; here, we converted some depths from published compilations to pressures, using

$$P = \rho gh \quad (11)$$

where ρ is the density of the lithosphere, g is acceleration due to gravity and h is the depth. In our calculations, we took $\rho = 3,200 \text{ kg m}^{-3}$, based on an assumed lithospheric thickness of 180 km, comprising a crustal thickness of 45 km and crustal density of $2,750 \text{ kg m}^{-3}$ (ref.⁹⁹), and a lithospheric thickness of 135 km and density of $3,300 \text{ kg m}^{-3}$ (i.e., using a middle value from ref.¹⁰⁰).

Statistical analysis of isotope variations

We compiled existing data to assess whether any temporal changes in kimberlite geochemistry are detectable during the abrupt reduction in lithospheric thickness in the Kaapvaal Craton at c. 117–108 Ma, hypothesized to be a consequence of lithospheric delamination⁴⁰. Here, we first analyzed whole rock (⁸⁷Sr/⁸⁶Sr)_i, (¹⁴³Nd/¹⁴⁴Nd)_i, and (²⁰⁶Pb/²⁰⁴Pb)_i from Smith et al.⁵⁰, updating the radiometric ages of the kimberlites where necessary. It has already been noted that the Group 2 kimberlites are restricted to the main phase of Pangaea breakup¹⁰¹. Because kimberlites are particularly susceptible to syn- and post-emplacement alteration by crustal fluids, whole rock Sr and Pb isotope data may not provide a very accurate record of mantle source compositions¹⁰². Therefore, we also studied the temporal variation in perovskite initial ⁸⁷Sr/⁸⁶Sr ratios¹⁰³ and whole rock ¹⁴³Nd/¹⁴⁴Nd ratios¹⁰⁴ in Cretaceous southern African kimberlites (Extended Data Fig. 10). The plots show the Sr and Nd isotope compositions of the MARID (Mica-Amphibole-Rutile-Ilmenite-Clinopyroxene) end-member defined from kimberlite xenoliths and is thought to derive from a lithospheric mantle source that has been variably contaminated by recycled crustal components, possibly during a subduction event at ~2.9–3.2 Ga¹⁰⁵. The plots also show the composition of the kimberlite melt end-member of ref.¹⁰⁵, largely defined from analyses of PIC (Phlogopite-Ilmenite-Clinopyroxene) kimberlite xenoliths. This end-member is interpreted to reflect a mantle source that has been metasomatized by kimberlite melts¹⁰⁵ and it is interesting to note that this end-member has very similar Sr, Nd and Pb isotope compositions as average Cretaceous to Cenozoic African carbonatites¹⁰⁶.

We next used conjugate partitioned recursion (CPR) to evaluate the potential presence of step changes in the above isotopic datasets (Extended Data Fig. 10). This iterative algorithm uses binary partitioning by marginal likelihood and conjugate priors (CPR) to identify an unknown number of change-points¹⁰⁷. If the marginal likelihood favours a change-point model, then the algorithm defines a change point and two-sigma uncertainty bounds of the two averages before and after the change point¹⁰⁷. In applying the CPR algorithm to the perovskite (⁸⁷Sr/⁸⁶Sr)_i and whole rock (⁸⁷Sr/⁸⁶Sr)_i, (¹⁴³Nd/¹⁴⁴Nd)_i and (²⁰⁶Pb/²⁰⁴Pb)_i datasets, we identified a prominent change-point occurring at 114 Ma for all of the isotopic proxies, except (¹⁴³Nd/¹⁴⁴Nd)_i, which occurs between 114–100 Ma, and ϵ Nd, which occurs between 118–114 Ma (Extended Data Figure 10).

Finally, to test whether this step change in kimberlite composition can be identified on other continents, we repeated the above procedure using kimberlites from the North American Craton (including Greenland), which contains multiple kimberlite fields (Extended Data Fig. 3a). Here, we compiled isotope data for age-constrained kimberlites from the GEOROC geochemistry database (<https://georoc.eu/>). For binned data (Fig. 4b; Extended Data Fig. 11), ϵ Nd_i

and ϵSr_i from samples with the same emplacement age were averaged. We find that these data reveal a similar step change from predominantly enriched to predominantly depleted kimberlite compositions. The CPR analysis identifies a step change in both ϵNd_i and ϵSr_i for these kimberlites between 105–102.5 Ma (Extended Data Fig. 11)—very similar in both tempo and magnitude to the observed shift in southern Africa (Extended Data Fig. 10). The geochemistry of these Cretaceous kimberlites in North America has been explained by hydrous decompression melting of an OIB-type mantle source¹⁵.

The step changes in isotope composition of kimberlite at ~114 Ma (South Africa) and ~105 Ma (North America) are compatible with initial melting of metasomatized lithospheric mantle prior to, and during, detachment of the cratonic mantle keel, as predicted by our geodynamic models (Fig. 2; Supplementary Video 1). This is then followed by eruption of melts exhibiting a stronger asthenospheric signature, but that nevertheless retain a sufficient carbonate burden to generate diamond-bearing kimberlites.

Data availability

All data generated and analyzed during this study are provided as Source Data files, and as Supplementary Datasets S1 and S2, available in the online version of the paper. All associated files and georeferenced data are available from the Zenodo open repository (developed under the European OpenAIRE program and operated by CERN) at the following link: <https://doi.org/10.5281/zenodo.7849141>.

Code availability

The input file, custom source code, and ASPECT installation details for the thermo-mechanical simulations is available at the Zenodo repository, at: <https://www.doi.org/10.5281/zenodo.7825780>.

The software, calculation, and plotting scripts for the decompressional hydrous melting calculations in Fig. 3c are freely available at <http://github.com/smj75/mormel>.

The input files, output files, and source code for the kimberlite-tectonic analysis are available at the following link: <https://doi.org/10.5281/zenodo.7849141>.

Methods References

55. Hanson, E. K. et al. Cretaceous erosion in central South Africa: Evidence from upper-crustal xenoliths in kimberlite diatremes. *South African Journal of Geology*, 112(2):125–140 (2009).
56. Stanley, J. R., Flowers, R. M. & Bell, D. R. Kimberlite (U-Th)/He dating links surface erosion with lithospheric heating, thinning, and metasomatism in the southern African Plateau. *Geology*, 41(12):1243–1246 (2013).
57. Stern, R. J., Leybourne, M. I. & Tsujimori, T. Kimberlites and the start of plate tectonics. *Geology*, 44(10):799–802 (2016).
58. Faure, S. World Kimberlites CONSOREM Database Version 2006-2. Consortium de Recherche en Exploration Minérale CONSOREM, Université du Québec à Montréal, Quebec, Canada (2006).
59. Merdith, A. S. et al. A full-plate global reconstruction of the Neoproterozoic. *Gondwana Research*, 50:84–134 (2017).
60. Müller, R. D. et al. Ocean basin evolution and global-scale plate reorganization events since Pangea breakup. *Annual Review of Earth and Planetary Sciences*, 44(1):107–138, (2016).
61. R Core Team. *R: A language and environment for statistical computing*. R Foundation for Statistical Computing, Vienna, Austria (2013).
62. LightTwist Software. *Uninet standalone and UninetEngine library*. LightTwist Software Development (2021).
63. Kurowicka, D. & Cooke, R. *Uncertainty Analysis with High Dimensional Dependence Modelling*. John Wiley (2006).
64. Guarino, V. et al. U–Pb ages, Sr–Nd isotope geochemistry, and petrogenesis of kimberlites, kamafugites and phlogopite-picrites of the Alto Paranaíba Igneous Province, Brazil. *Chemical Geology*, 353:65–82 (2013).
65. Felgate, M. R. *The petrogenesis of Brazilian kimberlites and kamafugites intruded along the 125° lineament: Improved geochemical and geochronological constraints on magmatism in Rondonia and the Alto Paranaíba Igneous Province*. PhD thesis, University of Melbourne (2014).
66. Conceição, R. V., Carniel, L. C., Jalowitzki, T., Gervasoni, F. & Cedeño, D. G. Geochemistry and geodynamic implications on the source of Paraná-Etendeka Large Igneous Province evidenced by the 128 Ma Rosário-6 kimberlite, southern Brazil. *Lithos*, 328–329:130–145 (2019).
67. Fernandes, P. R., Tommasi, A., Vauchez, A., Neves, S. P. & Nannini, F. The São Francisco cratonic root beneath the Neoproterozoic Brasília belt (Brazil): Petrophysical data from kimberlite xenoliths. *Tectonophysics*, 816:229011 (2021).
68. Carvalho, L. D. V. et al. An exotic Cretaceous kimberlite linked to metasomatized lithospheric mantle beneath the southwestern margin of the São Francisco Craton, Brazil. *Geoscience Frontiers*, 13(1):101281 (2022).
69. GPlates Development Team. *GPlates open-source plate tectonic reconstruction software*. GPlates: GNU General Public License (2021).

70. Mazrouei, S., Ghent, R. R., Bottke, W. F., Parker, A. H. & Gernon, T. M. Earth and Moon impact flux increased at the end of the Paleozoic. *Science*, 363(6424):253–257 (2019).
71. Pebesma, E. Simple features for R: Standardized support for spatial vector data. *The R Journal*, 10(1):439–446 (2018).
72. R package ‘geosphere’ for spherical trigonometry for geographic applications. <https://cran.r-project.org/web/packages/geosphere/geosphere.pdf>, (2021).
73. Evans, R. L. et al. Electrical lithosphere beneath the Kaapvaal craton, southern Africa. *Journal of Geophysical Research: Solid Earth*, 116(B4):B04105, (2011).
74. Eagles, G., Pérez-Díaz, L. & Scarselli, N. Getting over continent ocean boundaries. *Earth-Science Reviews*, 151:244–265 (2015).
75. Pasyanos, M. E., Masters, T. G., Laske, G. & Ma, Z. LITHO1.0: An updated crust and lithospheric model of the Earth. *Journal of Geophysical Research: Solid Earth*, 119(3):2153–2173 (2014).
76. Afonso, J. C., Salajegheh, F., Szwillus, W., Ebbing, J. & Gaina, C. A global reference model of the lithosphere and upper mantle from joint inversion and analysis of multiple data sets. *Geophysical Journal International*, 217(3):1602–1628 (2019).
77. Mather, K. A., Pearson, D. G., McKenzie, D., Kjarsgaard, B. A. & Priestley, K. Constraints on the depth and thermal history of cratonic lithosphere from peridotite xenoliths, xenocrysts and seismology. *Lithos*, 125(1):729–742 (2011).
78. McKenzie, D., Jackson, J. & Priestley, K. Thermal structure of oceanic and continental lithosphere. *Earth and Planetary Science Letters*, 233(3):337–349 (2005).
79. Kronbichler, M., Heister, T. & Bangerth, W. High accuracy mantle convection simulation through modern numerical methods. *Geophysical Journal International*, 191(1):12–29 (2012).
80. Heister, T., Dannberg, J., Gassmöller, R. & Bangerth, W. High accuracy mantle convection simulation through modern numerical methods–II: realistic models and problems. *Geophysical Journal International*, 210(2):833–851 (2017).
81. Rose, I., Buffett, B. & Heister, T. Stability and accuracy of free surface time integration in viscous flows. *Physics of the Earth and Planetary Interiors*, 262:90–100, (2017).
82. Glerum, A., Thieulot, C., Fraters, M., Blom, C. & Spakman, W. Nonlinear viscoplasticity in ASPECT: benchmarking and applications to subduction. *Solid Earth*, 9(2):267–294 (2018).
83. Brune, S., Heine, C., Pérez-Gussinyé, M. & Sobolev, S. V. Rift migration explains continental margin asymmetry and crustal hyper-extension. *Nature Communications*, 5(1):4014 (2014).
84. Rutter, E. H. & Brodie, K. H. Experimental grain size-sensitive flow of hot-pressed Brazilian quartz aggregates. *Journal of Structural Geology*, 26(11):2011–2023 (2004).
85. Rybacki, E., Gottschalk, M., Wirth, R. & Dresen, G. Influence of water fugacity and activation volume on the flow properties of fine-grained anorthite aggregates. *Journal of Geophysical Research: Solid Earth*, 111(B3) (2006).
86. van Hunen, J., Zhong, S., Shapiro, N. M. & Ritzwoller, M. H. New evidence for dislocation creep from 3-D geodynamic modeling of the Pacific upper mantle structure. *Earth and Planetary Science Letters*, 238(1):146–155 (2005).
87. McKenzie, D. & Bickle, M. J. The volume and composition of melt generated by extension of the lithosphere. *Journal of Petrology*, 29(3):625–679 (1988).
88. Turcotte, D.L. & Schubert, G. *Geodynamics*. Cambridge University Press, 2 edition (2002).
89. Wyllie, P. J. & Huang, W. L. Carbonation and melting reactions in the system CaO–MgO–SiO₂–CO₂ at mantle pressures with geophysical and petrological applications. *Contributions to Mineralogy and Petrology*, 54(2):79–107 (1976).
90. Wallace, M. E. & Green, D. H. An experimental determination of primary carbonatite magma composition. *Nature*, 335(6188):343–346 (1988).
91. Green, D. H. Experimental petrology of peridotites, including effects of water and carbon on melting in the Earth’s upper mantle. *Physics and Chemistry of Minerals*, 42(2):95–122 (2015).
92. Foley, S. F. & Pintér, Z. Chapter 1 - Primary Melt Compositions in the Earth’s Mantle. In Y. Kono and C. Sanloup, editors, *Magma Under Pressure*, pages 3–42. Elsevier (2018).
93. Foley, S. F. et al. The composition of near-solidus melts of peridotite in the presence of CO₂ and H₂O between 40 and 60 kbar. *Lithos*, 112:274–283 (2009).
94. Pintér, Z. et al. Experimental investigation of the composition of incipient melts in upper mantle peridotites in the presence of CO₂ and H₂O. *Lithos*, 396–397:106224 (2021).
95. Taylor, W. R. & Green, D. H. Measurement of reduced peridotite–C–O–H solidus and implications for redox melting of the mantle. *Nature*, 332(6162):349–352 (1988).
96. Schrauder, M. & Navon, O. Hydrous and carbonatitic mantle fluids in fibrous diamonds from Jwaneng, Botswana. *Geochimica et Cosmochimica Acta*, 58(2):761–771 (1994).
97. Dalton, J. A. & Presnall, D. C. The continuum of primary carbonatitic–kimberlitic melt compositions in equilibrium with lherzolite: Data from the system CaO–MgO–Al₂O₃–SiO₂–CO₂ at 6 GPa. *Journal of Petrology*, 39(11–12):1953–1964 (1998).
98. Baptiste, V., Tommasi, A. & Demouchy, S. Deformation and hydration of the lithospheric mantle beneath the Kaapvaal craton, South Africa. *Lithos*, 149:31–50 (2012).
99. Artemieva, I. M. & Shulgin, A. Making and altering the crust: A global perspective on crustal structure and evolution. *Earth and Planetary Science Letters*, 512:8–16 (2019).
100. Xia, B., Thybo, H. & Artemieva, I. M. Lithosphere mantle density of the North China Craton. *Journal of Geophysical Research: Solid Earth*, 125(9):e2020JB020296 (2020).
101. Skinner, E.M.W. Contrasting Group 1 and Group 2 kimberlite petrology: Towards a genetic model for kimberlites. In *4th International Kimberlite Conference: Extended Abstracts*, volume 4, pages 202–204 (1986).
102. Pearson, D. G., Woodhead, J. & Janney, P. E. Kimberlites as geochemical probes of Earth’s mantle. *Elements*, 15(6):387–392 (2019).
103. Woodhead, J., Hergt, J., Phillips, D. & Paton, C. African kimberlites revisited: In situ Sr-isotope analysis of groundmass perovskite. *Lithos*, 112:311–317 (2009).
104. Nowell, G. M. et al. Hf isotope systematics of kimberlites and their megacrysts: New constraints on their source regions. *Journal of Petrology*,

- 45(8):1583–1612 (2004).
105. Fitzpayne, A. et al. Progressive metasomatism of the mantle by kimberlite melts: Sr–Nd–Hf–Pb isotope compositions of MARID and PIC minerals. *Earth and Planetary Science Letters*, 509:15–26 (2019).
106. Bell, K. & Tilton, G. R. Nd, Pb and Sr isotopic compositions of east african carbonatites: Evidence for mantle mixing and plume inhomogeneity. *Journal of Petrology*, 42(10):1927–1945 (2001).
107. Jensen, G. Closed-form estimation of multiple change-point models. *PeerJ Preprints*, 1:e90v3 (2013).
108. Goodwin, A. M. *Principles of Precambrian Geology*. Academic Press (1996).
109. Woodhead, J., Hergt, J., Giuliani, A., Phillips, D. & Maas, R. Tracking continental-scale modification of the Earth’s mantle using zircon megacrysts. *Geochemical Perspectives Letters*, 4:1–6 (2017).

Acknowledgements

T.G. and T.H. were supported by The Alan Turing Institute under the EPSRC grant EP/N510129/1. T.G. gratefully acknowledges funding from the WoodNext Foundation, a component fund administered by Greater Houston Community Foundation. T.G. and R.M.P. received support from the Web Science Institute Stimulus Fund. A.S.M. was supported by the MCSA Fellowship NEOEARTH, project 893615. W.L.G. and S.Y.O’R. acknowledge funds from Australian Research Council Grant CE110001017 and AuScope NCRIS. This is contribution 1736 from the ARC Centre of Excellence for Core to Crust Fluid Systems (<http://www.cafs.mq.edu.au>) and 1505 in the GEMOC Key Centre (<http://www.gemoc.mq.edu.au>). The authors gratefully acknowledge the computing time granted by the Resource Allocation Board and provided on the supercomputer Lise at NHR@ZIB as part of the NHR infrastructure. The calculations for this research were conducted with computing resources under the project bbp00039. We thank John VanDecar for his invaluable editorial support and three reviewers for critical and constructive feedback that greatly improved the paper. We are very grateful to Sebastian Tappe for providing the kimberlite database from ref.⁶. We also appreciate helpful discussions with Ritske Huismans, Steve Sparks, Zsanett Pintér, Ross Mitchell, and Lynthener Takenaka de Oliveira. T.M.G. would like to acknowledge the kimberlite research community for many lively and thought-provoking interactions over the past two decades. T.M.G. also wishes to acknowledge and pay tribute to the late Maarten de Wit, whose visionary and inspiring leadership on geodynamics and the evolution of the Gondwana supercontinent has left an indelible mark on this field. Maarten’s contributions will always be remembered and appreciated.

Author contributions

T.G. conceived the idea, interpreted data, and prepared the manuscript. S.M.J. conceived the analytical model of Rayleigh–Taylor instability and performed geotherm and melting calculations. S.B. developed the thermo-mechanical simulations, with input from A.G. who contributed expertise in *ASPECT* modelling. T.H. carried out statistical and geospatial analysis (*R*, *QGIS*, *UNINET*) and modelling with input from T.G. D.K. and R.M.P. contributed geotectonic interpretations, and A.M. provided support with plate tectonic modelling software, *GPlates* and *pyGPlates* (<https://www.gplates.org/>). M.F. contributed expertise on kimberlites. S.Y.O. and W.L.G. helped analyze and interpret xenolith data and lithospheric processes. J.C.S. contributed expertise in phase diagrams, phase equilibria, and thermodynamic data, using the open-source *Perple_X* software (<https://www.perplex.ethz.ch/>). M.P. and C.J.S. analyzed and interpreted geochemical data. T.G. and S.M.J. wrote the manuscript with input from all co-authors.

Competing interests The authors declare no competing interests.

Additional information

Supplementary information The online version contains supplementary material available at <https://doi.org/10.1038/sXXXXX-XXX-XXXXX-X>.

Correspondence and requests for materials should be addressed to T. M. Gernon.

Peer review information *Nature* thanks [INSERT NAMES HERE] and the other, anonymous, reviewer(s) for their contribution to the peer review of this work. Peer reviewer reports are available.

Extended Data Figures and Tables

Extended Data Figure 1: Relationship between continental fragmentation and global kimberlites. **a**, Kimberlite distribution since 500 Ma (n=860) and **b**, since 1 Ga (n=981), using radiometrically-dated kimberlites from the compilation of ref.⁶ (Methods). **c**, Continental fragmentation (continental perimeter/area) derived from paleogeographic reconstructions of ref.¹⁷ for 500–0 Ma and **d**, 1000–0 Ma. **e**, Rate of change of continental fragmentation (ΔF ; see Methods) using a 9 Myr window for 500–0 Ma and **f**, 1000–0 Ma. Data are available in Supplementary Dataset 1.

Extended Data Figure 2: Relationship between fragmentation and kimberlites. **a**, Spearman rank correlation and conditional rank correlation (†refer to equation 2, Methods, for definitions) for ΔF (slope over 9 Myr moving window) and kimberlites for 500–0 Ma, calculated using a Bayesian Network (BN)¹⁸ (Methods). Here, the input is a 5 Myr resolution series, where kimberlite count is the total number of events in each 5 Myr interval, and ΔF is the slope of the regression line for fragmentation estimated every 5 Myr. Using a simple saturated BN (where each node is linked by an arc to every other node in the network) we computed the correlation of ΔF and kimberlite count $\text{corr}(\Delta F, K)$; then the correlation of ΔF and kimberlite with a lag of 5 Myr (where ΔF precedes kimberlites) conditional on ΔF (unlagged); i.e., $\text{corr}(\Delta F_{t-5}, K \mid \Delta F)$; then the correlation at lag 10 Myr, conditional on the lags at 0 and 5 Myr $\text{corr}(\Delta F_{t-10}, K \mid \Delta F, \Delta F_{t-5})$ etc., up to a lag of 50 Myr. This removes the effect of shorter lags, and thus the effects of autocorrelation. This test confirms that the maximum correlation between ΔF and kimberlites occurs ~25 Myr after fragmentation (with uncertainty of ± 4 Myr). **b**, Cross-correlations between kimberlites⁶ (n=981) and ΔF (9 Myr window) spanning 1 Gyr (Methods), showing dominant lags at -26 ± 4 Myr (i.e., fragmentation preceding kimberlites); dashed blue lines show 95% confidence intervals. **c**, Cross-correlations between kimberlites and ΔF accounting for potential preservation bias by weighting the number of kimberlites inversely according to surface preservation (inset, from ref.¹⁰⁸). This analysis does not change the dominant lag (-26 Myr) relative to **(b)**. **d**, Cross-correlations between kimberlites⁶ (n=665) and ΔF (9 Myr window) from 200–0 Ma (Methods) showing the strongest correlation ($\rho=0.52$) at a lag of -28 Myr; dashed blue lines show the 95% confidence intervals. Note the different scale on the x-axis relative to **a–c**.

Extended Data Figure 3: Kimberlite distributions, lithospheric thickness, and migration characteristics. **a**, Global map of kimberlites younger than 500 Ma from ref.⁶ (n=860) plotted on a map of lithospheric thickness interpolated using data from ref.⁷⁵ (continent-ocean boundaries (COB) shown in white are from GPlates^{23,69}). Kimberlites are coloured by their radiometric ages⁶; the global kimberlites (n=4,287, black diamonds) are from ref.⁵⁸. **b**, Lithospheric thickness, sampled from two different global reference models^{75,76}, for kimberlites younger than 250 Ma; note that kimberlites predominantly occur on lithosphere >150 km thick. **c**, Estimation of migration rate (slope) using distance and time lag from continental breakup for African kimberlite clusters, using standard linear regression and Theil Sen regression. A Monte Carlo Simulation (5,000 runs) was performed to capture uncertainty in kimberlite age, breakup age, and rift distance (Methods). Black circles denote the median distance and lag from all 5,000 simulations for each kimberlite cluster, and bars denote the standard deviation. Regression lines for each individual simulation are shown in blue, and the black line shows the regression for the original data set. Results are broadly similar for both the standard and Theil Sen regression models, and the estimated migration rate is consistent with analytical and geodynamic models (Fig. 3a). **d**, Histograms showing the distribution of lags (time in Myr relative to breakup) for kimberlite clusters in Africa and South America. The first histogram uses the original data set, and the second (normalized) histogram incorporates age and distance uncertainties by Monte Carlo Simulation. Note the peaks around breakup and approximately 25–55 Myr post breakup.

Extended Data Figure 4: Minimum distances and time lags of kimberlite eruptions relative to continental boundaries. Probability density plots for two end member rift association models — associating kimberlites with the rift section with either the minimum lag (blue) or the minimum distance (red). This provides an estimate of the upper

and lower bounds of the migration rate, for each kimberlite or cluster. Uncertainty in kimberlite age, breakup age, and rift distance is accounted for by Monte Carlo simulation (see Methods). Results are presented for all three locations (North America, South America, and Africa) combined. **a**, shows the density plot for kimberlite clusters, giving a median of 10.6 (shortest lag) to 30.4 (shortest distance); data are available in Supplementary Dataset 2; **b**, shows the density plot individual kimberlites, giving a median 12.8 (shortest lag) and 37.7 (shortest distance). Inset table summarizes the number of kimberlites and clusters by continent.

Extended Data Figure 5: Temporal distribution of kimberlites in North America relative to continental breakup.

a, Histograms showing the distribution of lags (time in Myr relative to breakup) for kimberlites clusters in North America, focussing on kimberlites closest to rift sections. **a**, uses the original data set (no uncertainty), and **b**, is a normalized histogram incorporating uncertainty in kimberlite age, breakup age, and rift distance. Using the clustering method (see Methods for details), we obtain a total of 65 clusters. Peaks occur around 55–25 Myr prior to breakup, and 35–75 Myr post breakup. Breakup in North America (i.e., rifts of the Central Atlantic, Greenland–North America, and Arctic region) is diachronous and estimated to occur between 10–76 Myr after rift onset²⁴.

Extended Data Figure 6: Relationship between continental breakup and plumes over 1 Ga. a, Cross-correlations

between ΔF (9 Myr window) and plumes over 1 Ga, using the well-established ages of their surface expression, large igneous provinces (LIPs)²⁵ ($n=104$). This analysis reveals a strong peak at $+7 \pm 4$ Myr lags, indicating that LIP magmatism most commonly initiates ~ 7 Myr before continental fragmentation. **b**, Results of a Bayesian Network investigating the link between LIPs and ΔF , and configured for LIPs leading ΔF (as shown in (a) to be dominant). The input is a 5 Myr resolution series, where LIP is the total number of LIP events with a start date falling in each 5 Myr interval, and ΔF is the slope of the regression line for fragmentation (over a 9 Myr window) estimated every 5 Myr. Critically, this analysis removes the effect of shorter lags, and thus the effects of autocorrelation. The maximum conditional correlation (0.25) occurs at a lag of $\sim 10 \pm 4$ Myr (where LIP leads ΔF); dashed blue line show estimated 95% confidence intervals (threshold for the 95% CI = 0.143 for the 5 Myr resolution time series of length $n = 188$).

Extended Data Figure 7: Compositional and P - T characteristics of southern African xenoliths, showing the effects of refertilization. a, Pressure versus temperature estimates (from thermometry/barometry) of peridotite xenoliths from the Kaapvaal Craton (data from various sources summarized in ref.⁹⁸); note that the majority of low-Fo xenoliths lie above the geotherm defined by high-Fo xenoliths and are sheared, providing good evidence of a thermal effect. **b**, Olivine forsterite content (Fo%) versus modal % clinopyroxene + garnet (as a measure of fertility); note the negative correlation of Fo with fertility. **c**, Pressure versus Fo; note the concentration of low-Fo xenoliths between 4.5–5.2 GPa (~ 22 km thick), interpreted to represent a dense boundary layer. **d**, Pressure versus modal % cpx+gnt; note the general high fertility of low-Fo xenoliths—with two-thirds containing cpx+gnt > 10 .

Extended Data Figure 8: Thermal boundary layer properties derived from xenolith geotherms. Thickness and temperature conditions of the lower lithospheric thermal boundary layer (TBL) derived using peridotite xenolith- P - T -based geotherms of Mather et al.⁷⁷ for four different kimberlites: Bullfontein, Finch, Gibeon and Somerset Island (see Methods). Note that the TBL is consistently ~ 35 km thick, and the temperature increase across it, ΔT is ~ 150 °C.

Extended Data Figure 9: Thermo-mechanical simulations of continental breakup. (a)–(i) Generation and propagation/migration of sequential Rayleigh-Taylor instabilities (labelled 1–7 at different time slices), which migrate at velocities of 15–20 km Myr⁻¹.

Extended Data Figure 10: Changing chemistry of kimberlites in the Kaapvaal Craton from 150–85 Ma. a, Interpolated Ti contents of garnet xenocrysts (modified after ref.⁴⁰) at 117 Ma and 108 Ma, showing the effects of heating and chemical refertilization of the lower lithosphere by asthenospheric melts, thinning the lithosphere by 30–40 km (vertical grey field). Below this are the chemical compositions of Group 2 kimberlites (and orangeites/lamproites) and Group 1 kimberlites, specifically whole-rock ($^{87}\text{Sr}/^{86}\text{Sr}$)_i (**b**), whole-rock ($^{143}\text{Nd}/^{144}\text{Nd}$)_i (**c**), and whole-rock

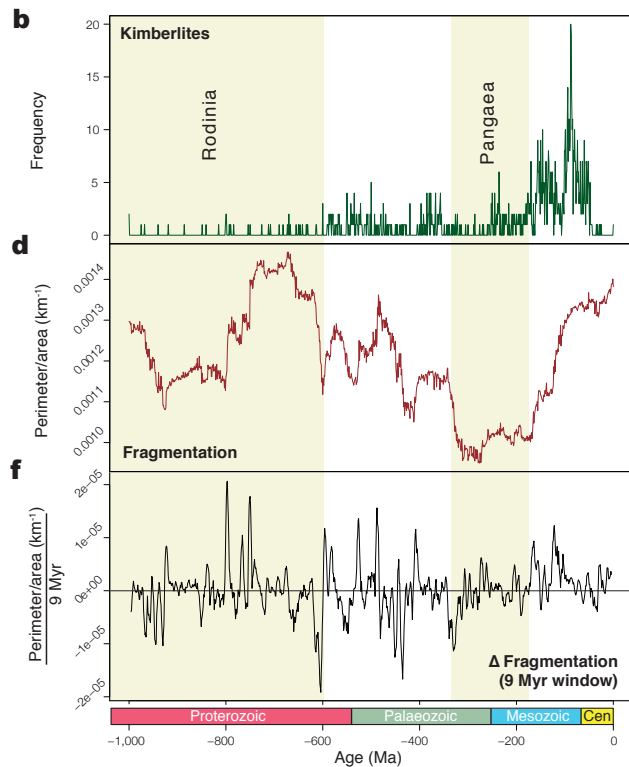
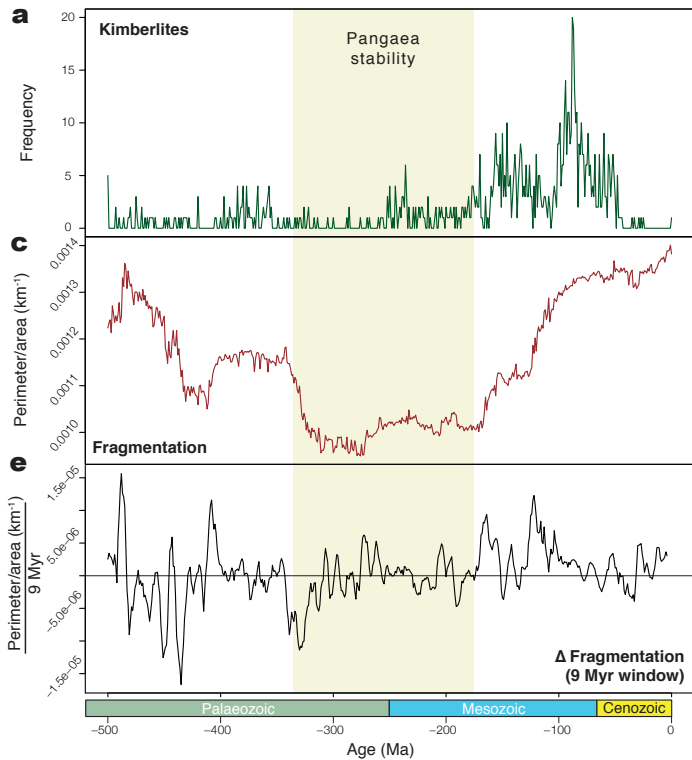
($^{206}\text{Pb}/^{204}\text{Pb}$)_i (d); these data are updated from Smith⁵⁰. e, ($^{87}\text{Sr}/^{86}\text{Sr}$)_i of kimberlitic perovskites from Woodhead et al.¹⁰³. The plot shows the MARID (Mica-Amphibole-Rutile-Ilmenite-Clinopyroxene) end-member defined from kimberlite xenoliths and thought to derive from a lithospheric mantle source¹⁰⁵; and a kimberlite melt end-member¹⁰⁵ largely defined from analyses of PIC (Phlogopite-Ilmenite- Clinopyroxene) kimberlite xenoliths. f, Whole-rock ϵNd calculated from the data of Nowell et al.¹⁰⁴. The lines on the plots show the statistically defined change points (using conjugate partitioned recursion; Methods) and two-sigma uncertainty bounds of the two averages (thin red lines) before and after the change point. Step changes occur at 114 Ma (dashed vertical line) for all variables, except ($^{143}\text{Nd}/^{144}\text{Nd}$)_i, which occurs between 114–100 Ma, and ϵNd , which occurs between 118–114 Ma. Continent-scale metasomatism occurred before 114 Ma¹⁰⁹, raising the possibility that migrating chains of convective instabilities (Fig. 2) partially stripped and melted the lithospheric keels, driving infiltration (i.e., melt-metasomatism) of carbonate melts that caused further destabilization.

Extended Data Figure 11: Changing chemistry of kimberlites in North America from 110–85 Ma. Whole-rock kimberlite Nd and Sr isotope compositions in North America from the GEOROC repository. Note the abrupt shift from lithospheric (ϵNd_i -10 to -20) to mantle (ϵNd_i 0 to +5) kimberlite compositions, which are also reflected in a reduction of ϵSr_i . This transition is near-identical to that seen in southern Africa (Extended Data Fig. 10) and is interpreted in similar terms to represent an early peak in lithospheric removal followed by upwelling of asthenospheric mantle.

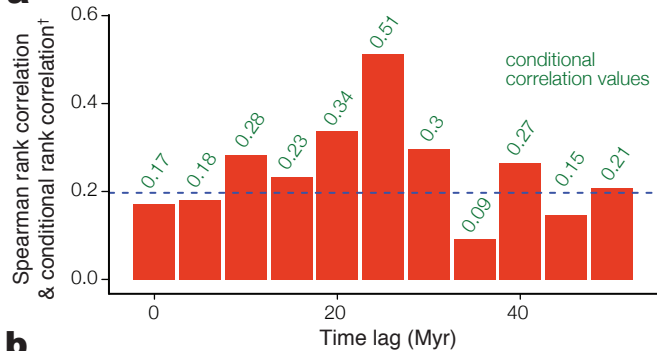
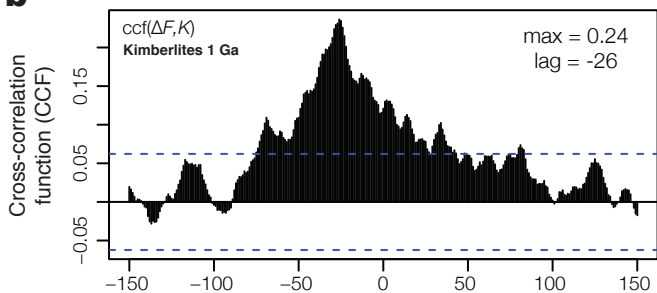
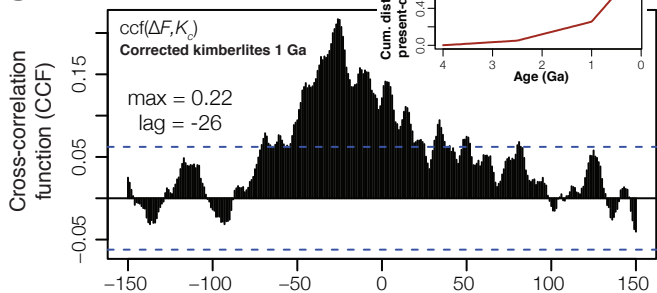
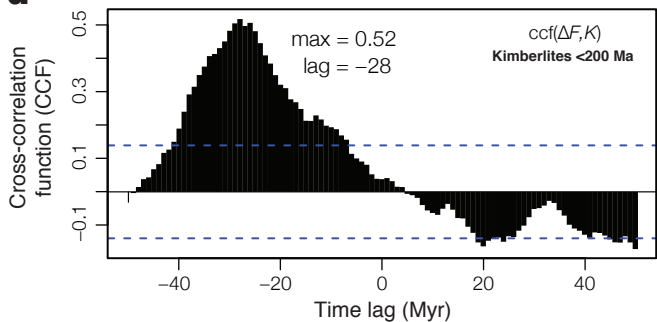
Extended Data Table 1: Rayleigh-Taylor instability models applied to lithospheric keel delamination. Six analytical models (see Fig. 3a) describe two fluid layers where the upper layer has the higher density (Methods). The models differ in the relative layer thicknesses, viscosity, and vertical density gradient. Each model is specified by a scaled dominant wavelength λ_d^* and a scaled exponential growth rate q_d^* for convective instabilities. Actual wavelengths and e-folding growth times (determined using equations 5 & 6) are shown for the typical lithospheric thermal boundary layer properties we estimated by fitting geotherms to P-T data from kimberlite xenoliths (see Methods: ‘Xenolith geotherms’). The lateral propagation rate for a chain of instabilities is determined using equation 1 (main paper) which we derived from scaling analysis (Methods: ‘Scaling analysis of Rayleigh-Taylor instability chains’). The characteristic rate and thermal Péclet number for vertical return flow confirms that asthenosphere will well up adiabatically to replace the removed part of cratonic keel (Methods: ‘Melting calculations’).

Extended Data Table 2: Geodynamic model parameters. Model parameters used in ASPECT thermo-mechanical simulations (see Methods for details). Abbreviations: dis – dislocation creep, diff – diffusion creep (creep property values from refs.^{53,84,85}).

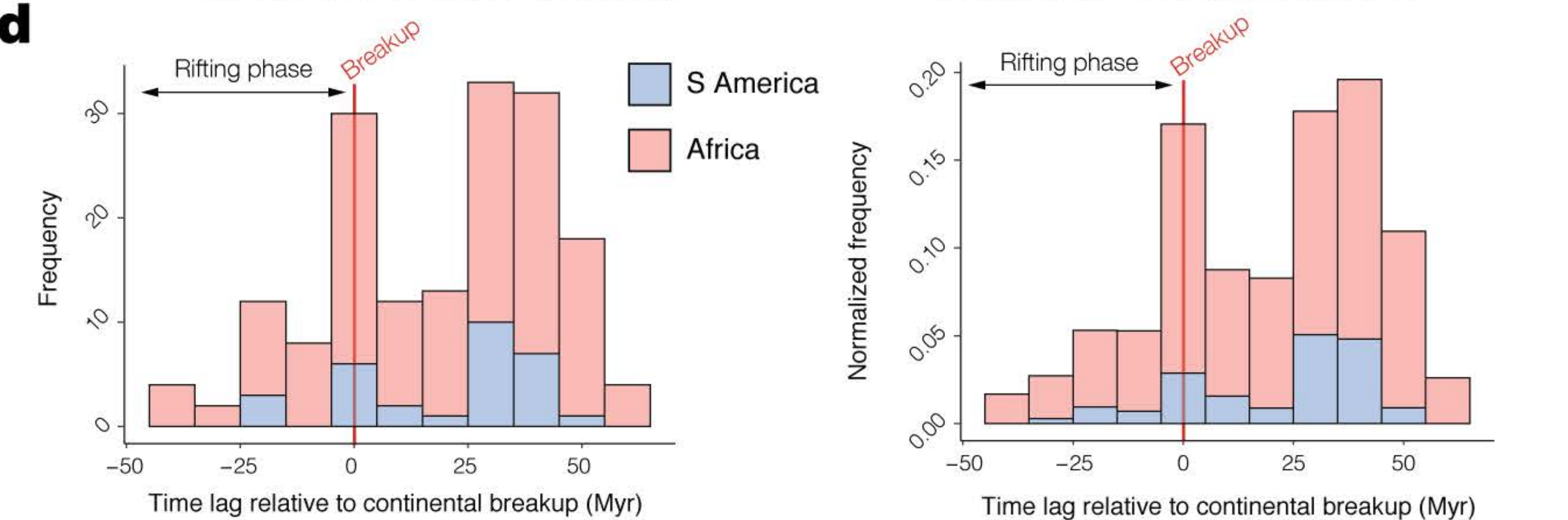
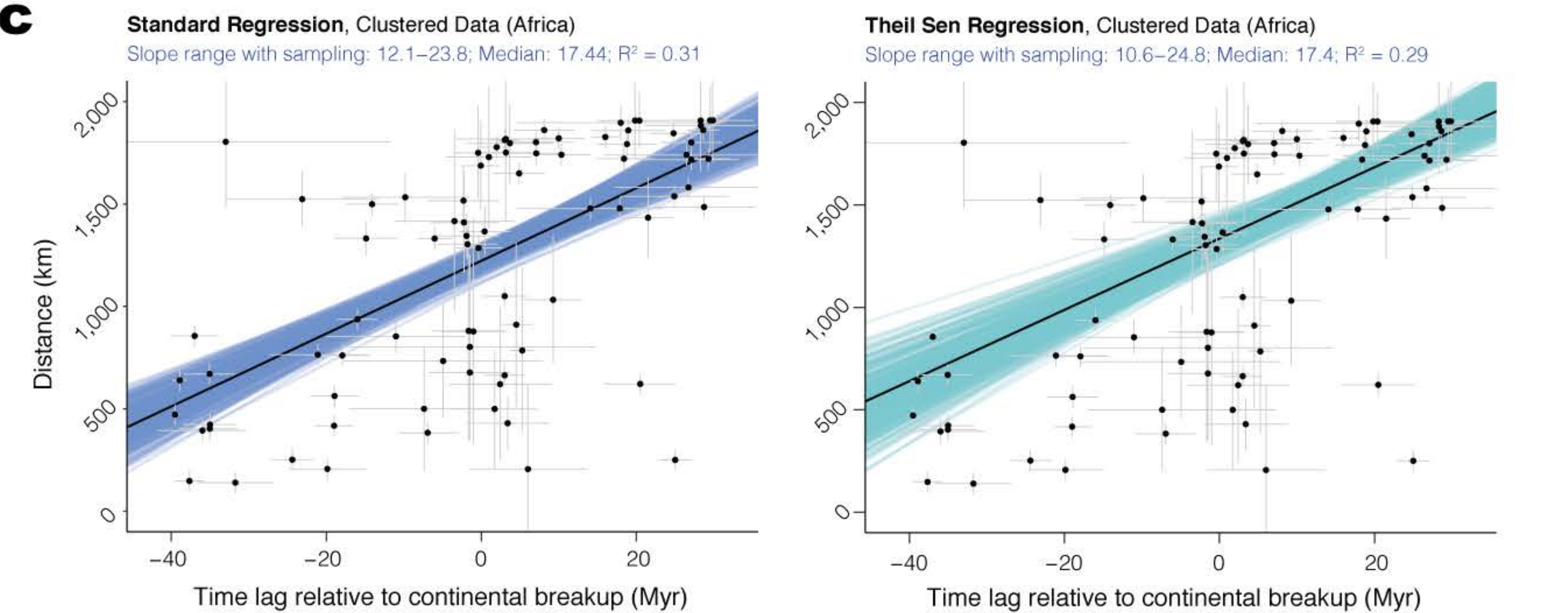
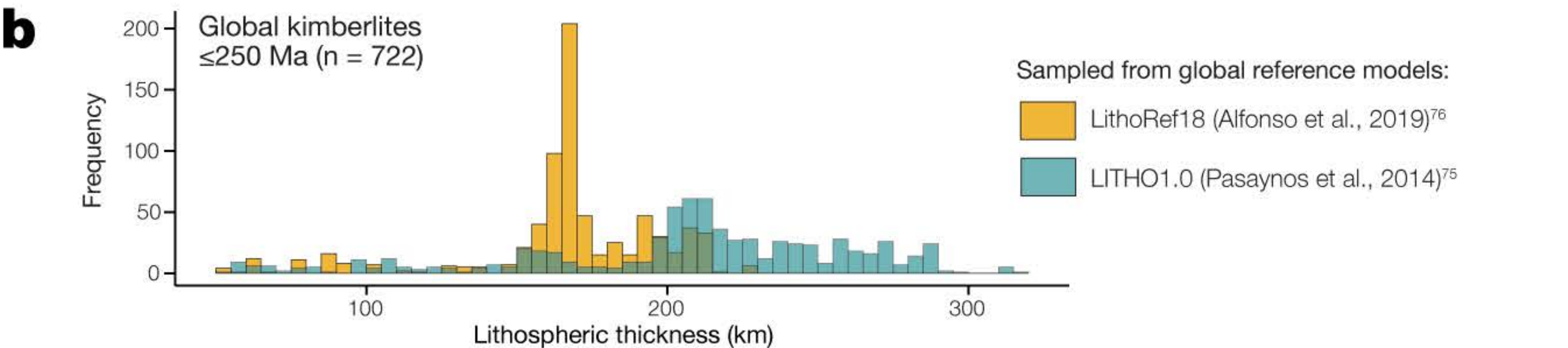
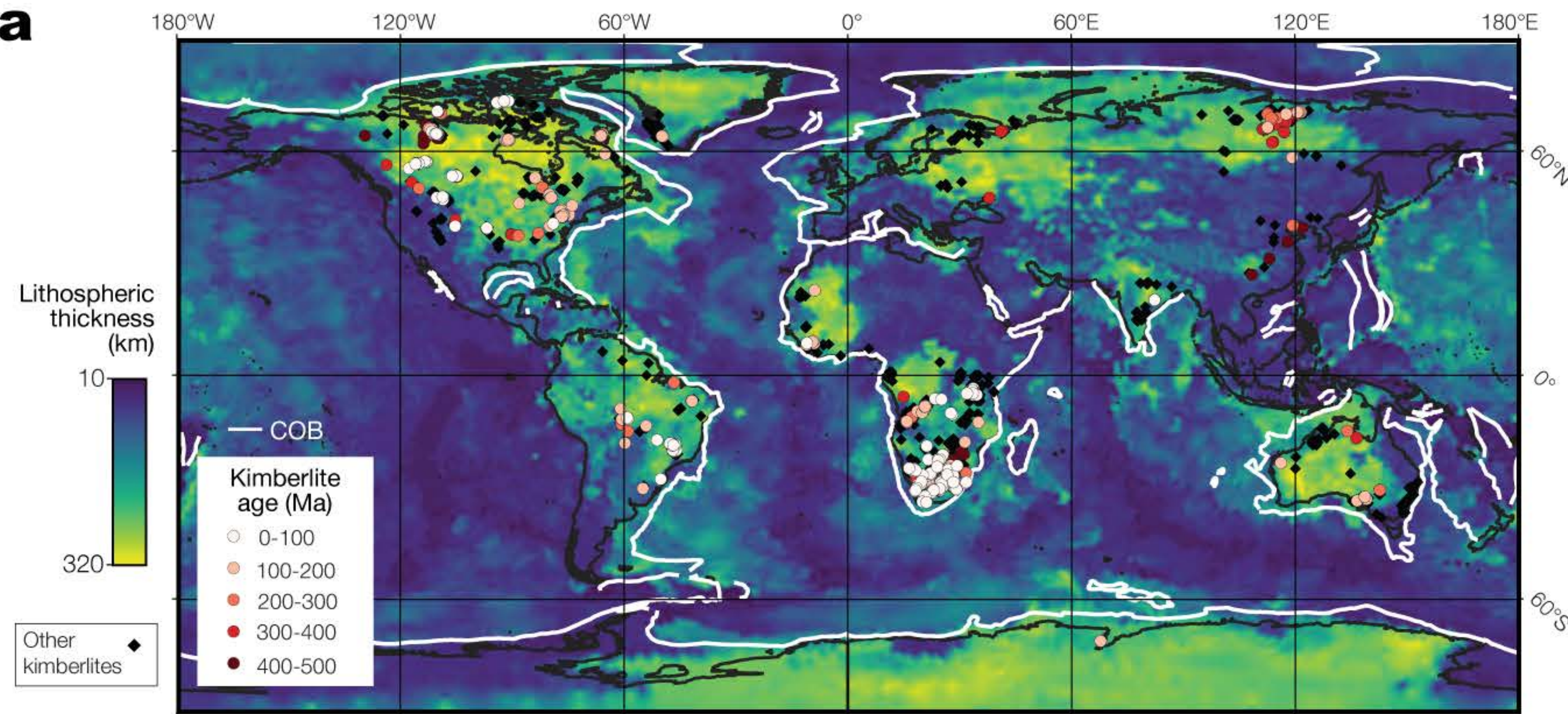
Extended Data Figure 1



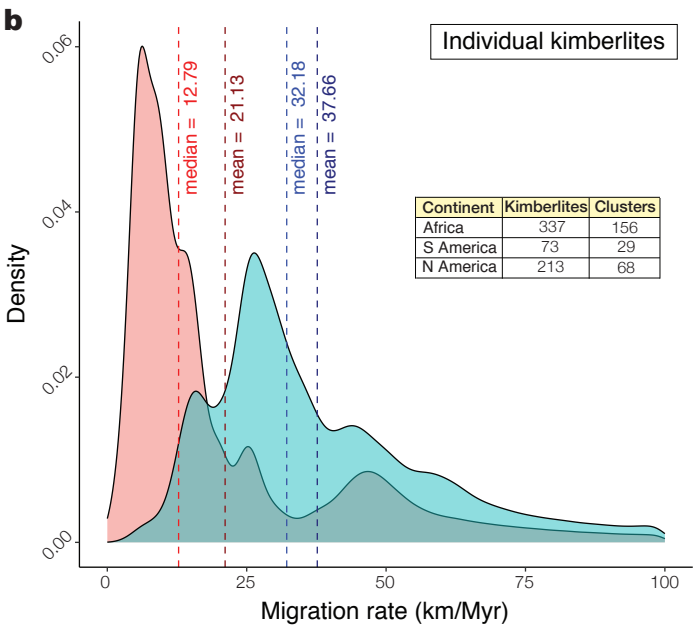
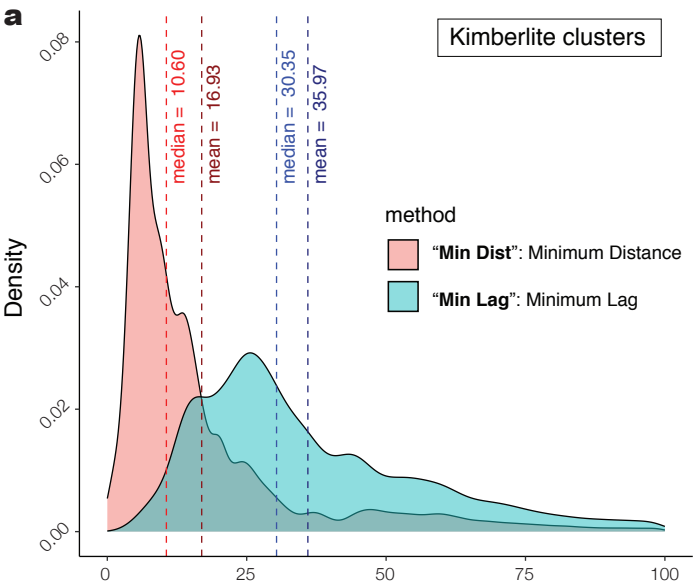
Extended Data Figure 2

a**b****c****d**

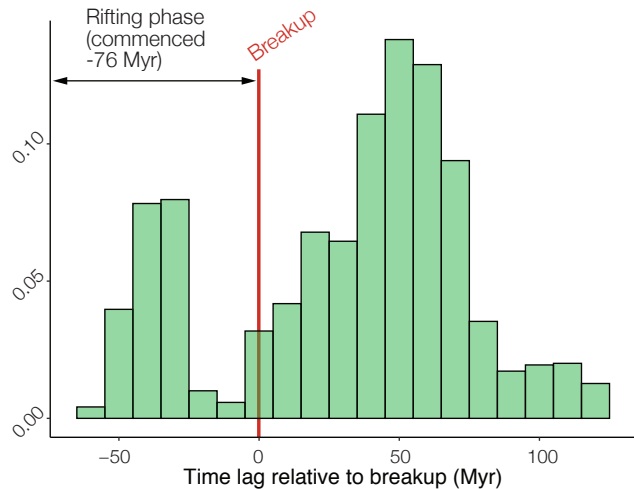
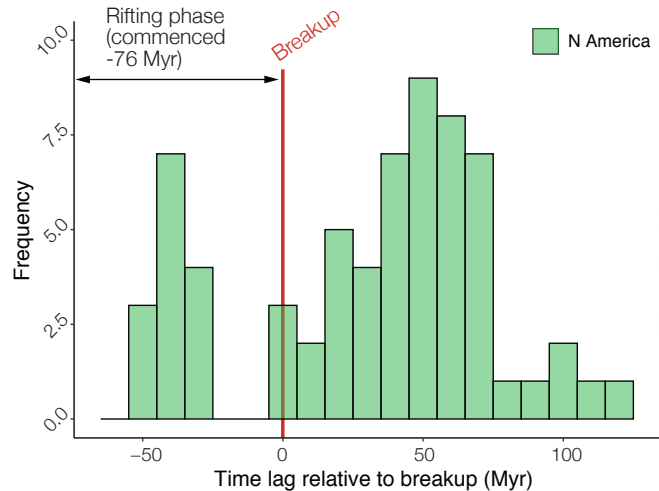
Extended Data Figure 3



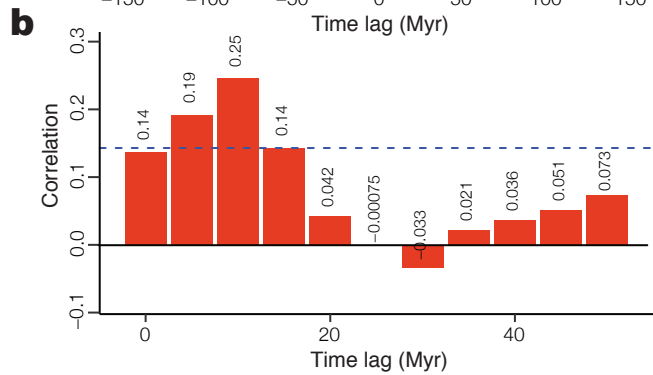
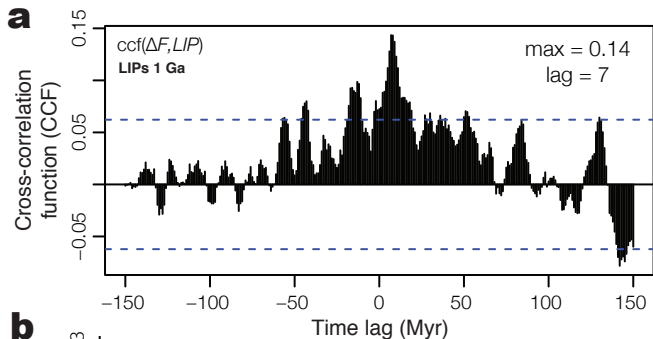
Extended Data Figure 4



Extended Data Figure 5

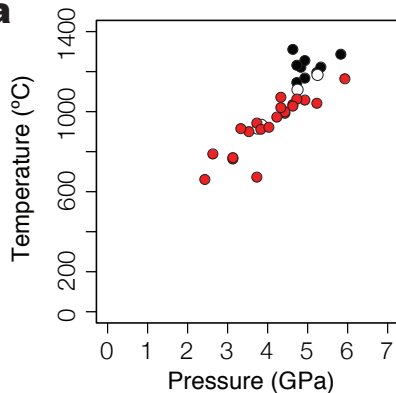


Extended Data Figure 6

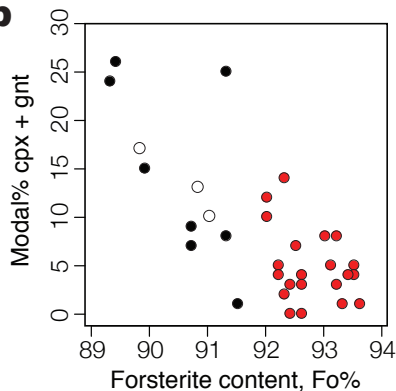


Extended Data Figure 7

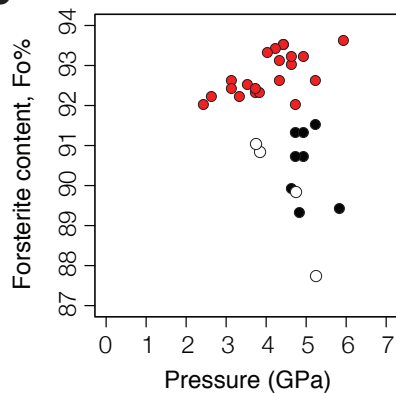
a



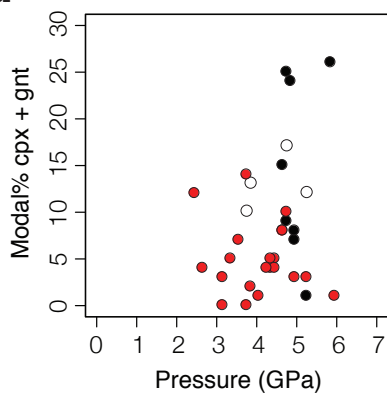
b



c

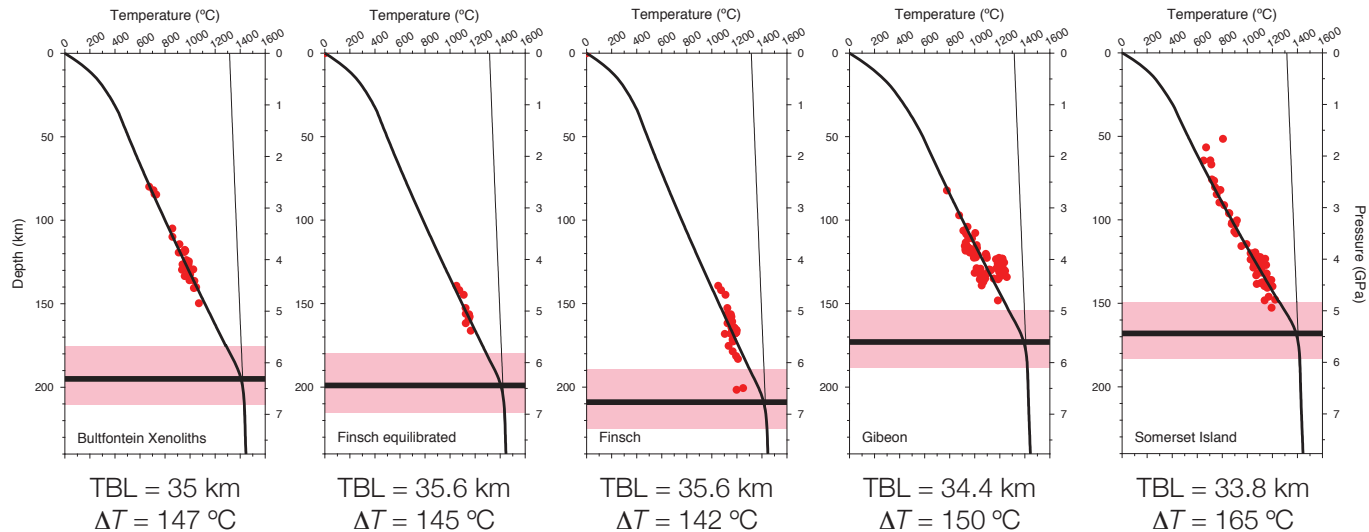


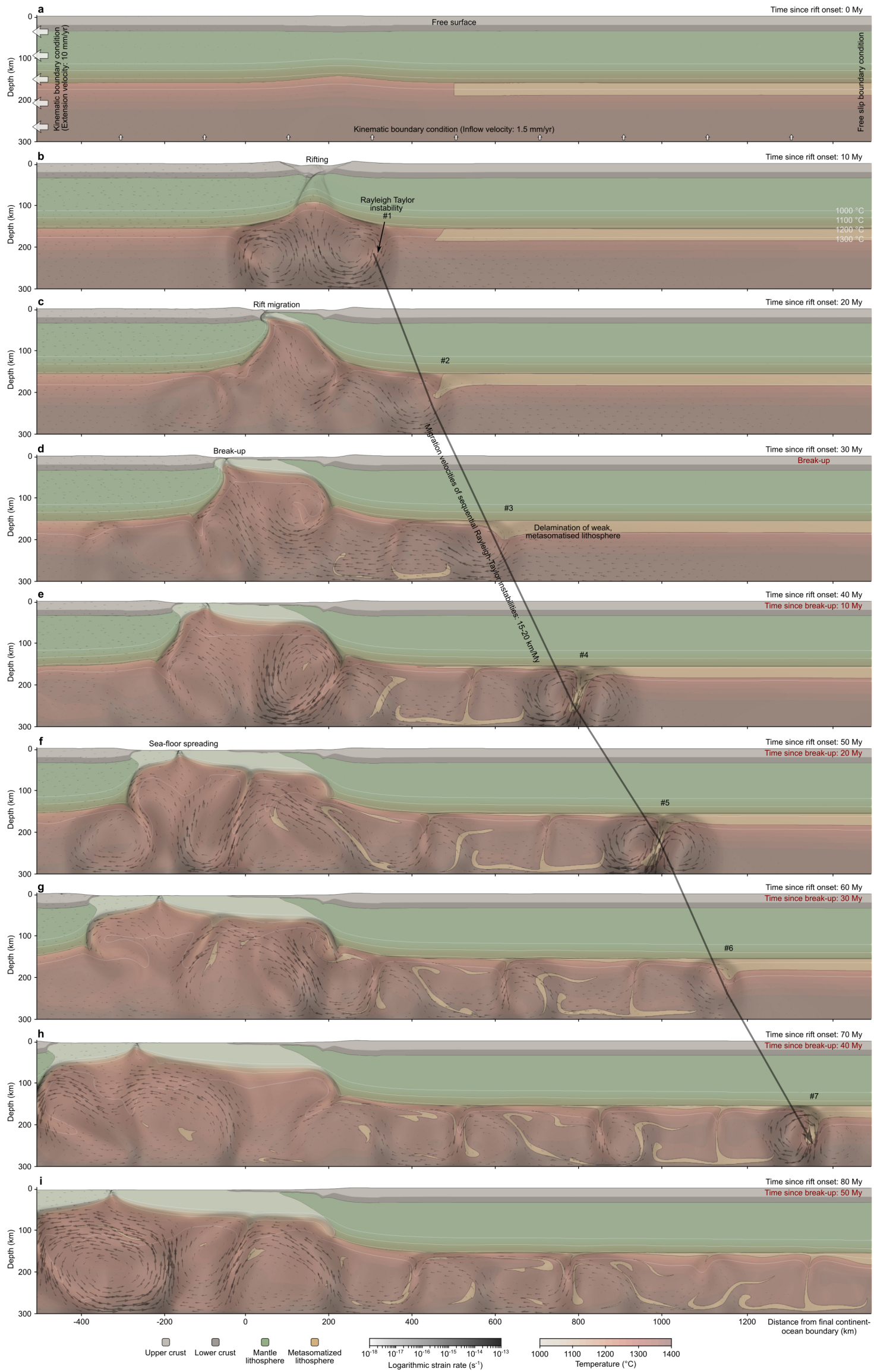
d



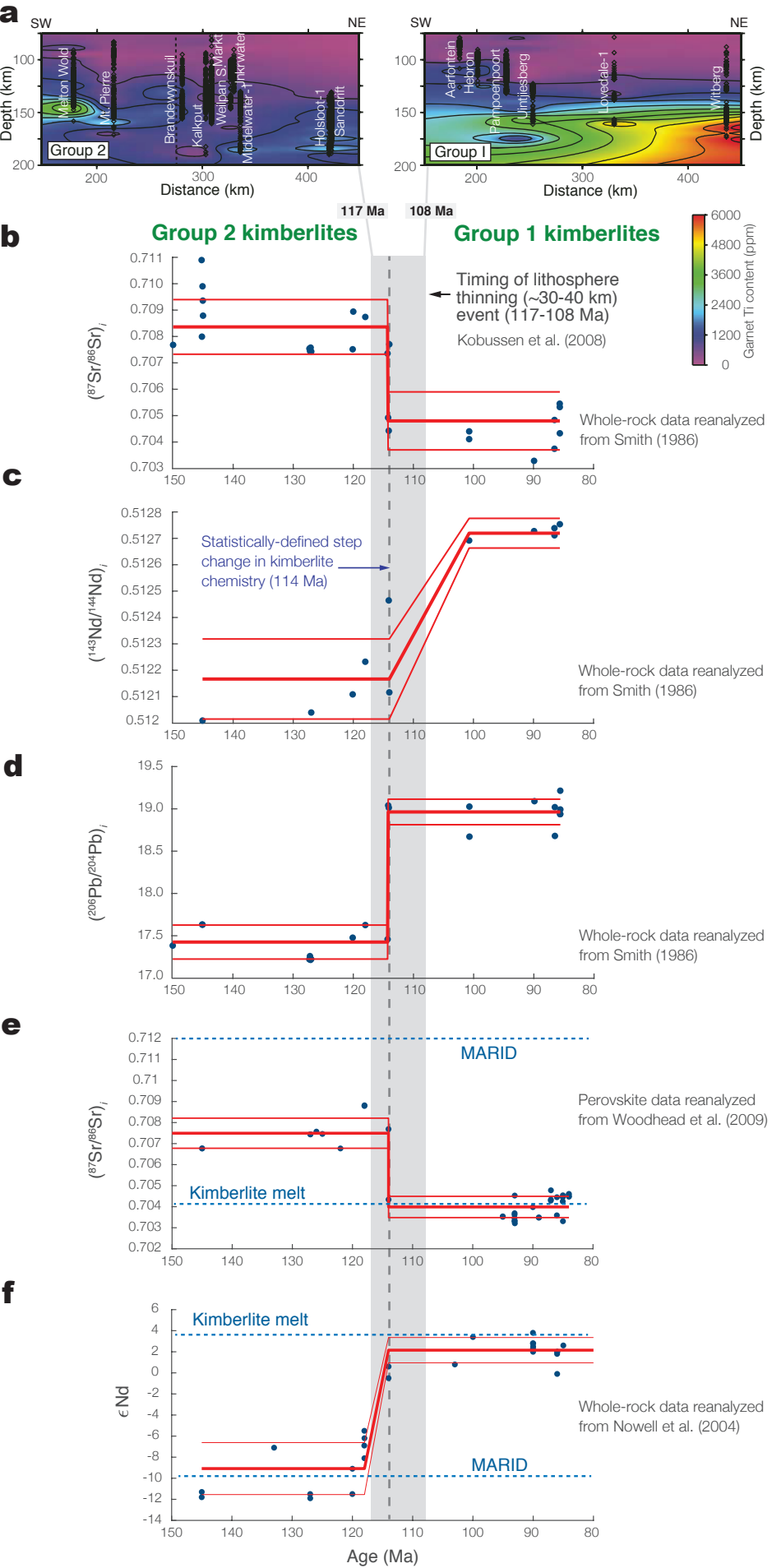
● Fo ≤ 91.5 sheared ○ Fo ≤ 91.5 unsheared ● Fo ≥ 92 unsheared

Extended Data Figure 8

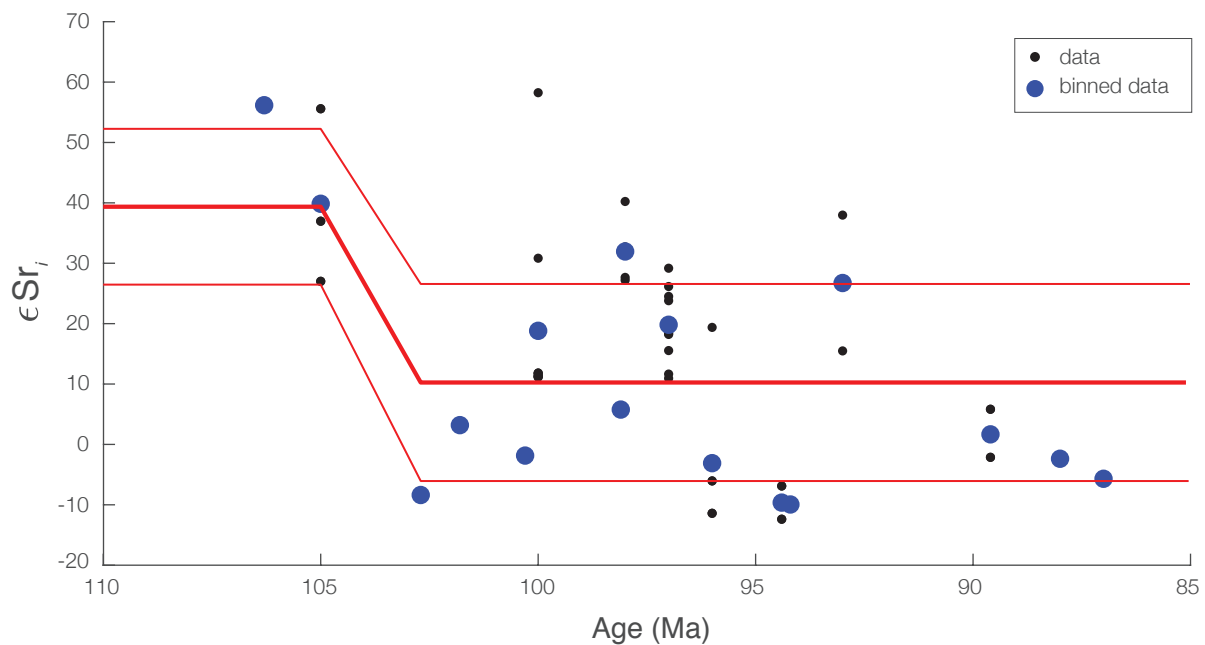
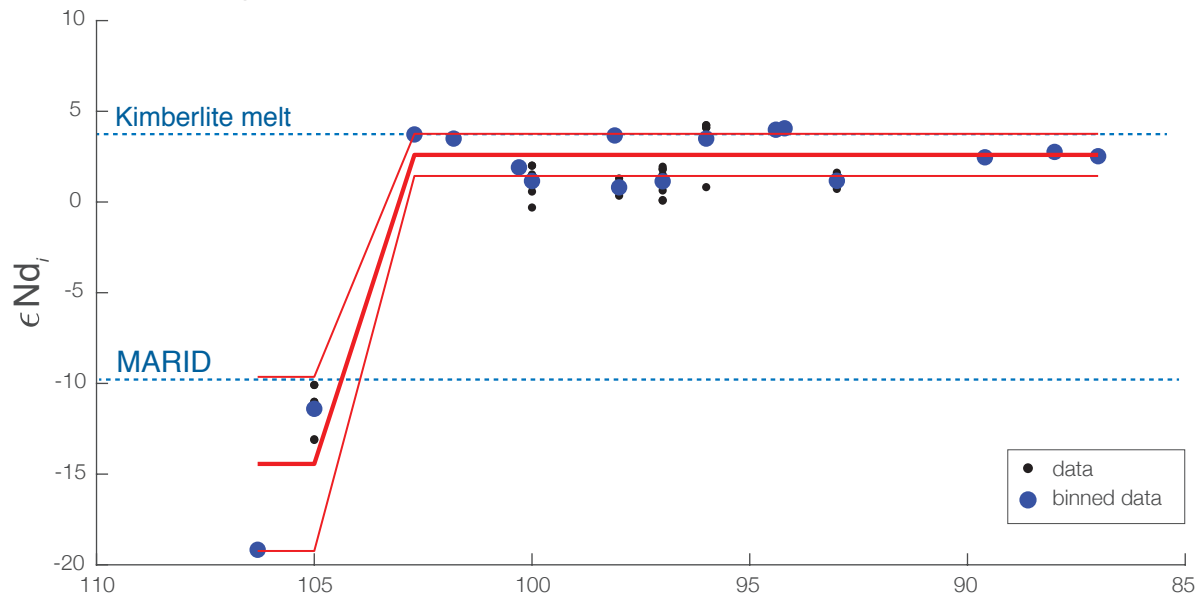




Extended Data Figure 10



Extended Data Figure 11



Key		Model	Scaled Wavelength	Scaled Growth Rate	Instability Wavelength	Instability Growth Time	Lateral Propagation	Upwelling Rate	Péclet Number	Reference
			λ_d^*	q_d^*	λ_d	τ_d	U	v	Pe	
					km	Myr	km/Myr	km/Myr		
1	Layer over half-space of same viscosity		3.7	0.097	65	2.6	25	39	22	33
2	Layer over layer of same thickness and viscosity		2.6	0.077	45	3.3	14	19	11	88
3	Layer over much less viscous half-space		3.0	0.160	53	1.6	33	26	14	33
4	Layer with linearly decreasing density over half-space of constant density and same viscosity		2.9	0.037	51	3.4	15	24	13	33
5	Layer with linearly decreasing density over half-space of constant density and much lower viscosity		2.4	0.059	42	2.1	20	17	9	33
6	Plastic layer over plastic half-space		2.8	0.610	49	0.4	118	23	13	33

Parameter	Symbol	Units	Upper crust	Lower crust	Lithospheric mantle	Asthenospheric mantle & thermal boundary layer
Reference density (at surface conditions)	ρ_0	kg m ⁻³	2,700	2,850	3,280	3,300
Thermal expansivity	α	K ⁻¹	$2.7 \cdot 10^{-5}$	$2.7 \cdot 10^{-5}$	$3.0 \cdot 10^{-5}$	$3.0 \cdot 10^{-5}$
Thermal diffusivity	κ	m ² s ⁻¹	$7.72 \cdot 10^{-7}$	$7.31 \cdot 10^{-7}$	$8.38 \cdot 10^{-7}$	$8.33 \cdot 10^{-7}$
Heat capacity	C_p	J kg ⁻¹ K ⁻¹	1,200	1,200	1,200	1,200
Heat production	H	W m ⁻³	$1.0 \cdot 10^{-6}$	$0.1 \cdot 10^{-6}$	0	0
Cohesion	C	Pa	$5 \cdot 10^6$	$5 \cdot 10^6$	$5 \cdot 10^6$	$5 \cdot 10^6$
Internal friction coefficient (unweakened)	f	-	0.5	0.5	0.5	0.5
Strain weakening interval	-	-	[0,1]	[0,1]	[0,1]	[0,1]
Frictional weakening factor	a_f	-	0.25	0.25	0.25	0.25
Viscous weakening factor	a_v	-	0.25	0.25	0.25	1.0
Material			Wet quartzite ⁸⁴	Wet quartzite ⁸⁵	Dry olivine ⁵³	Wet olivine ⁵³
Stress exponent (dis)	n	-	4.0	3.0	3.5	3.5
Prefactor (dis)	A_{dis}	Pa ⁻ⁿ s ⁻¹	$8.57 \cdot 10^{-28}$	$7.13 \cdot 10^{-18}$	$6.52 \cdot 10^{-16}$	$2.12 \cdot 10^{-15}$
Activation energy (dis)	E_{dis}	J mol ⁻¹	$223 \cdot 10^3$	$345 \cdot 10^3$	$530 \cdot 10^3$	$480 \cdot 10^3$
Activation volume (dis)	V_{dis}	m ³ mol ⁻¹	0	$38 \cdot 10^{-6}$	$18 \cdot 10^{-6}$	$11 \cdot 10^{-6}$
Prefactor (diff)	A_{diff}	Pa ⁻¹ s ⁻¹	$5.97 \cdot 10^{-19}$	$2.99 \cdot 10^{-25}$	$2.25 \cdot 10^{-9}$	$1.5 \cdot 10^{-9}$
Activation energy (diff)	E_{diff}	J mol ⁻¹	$223 \cdot 10^3$	$159 \cdot 10^3$	$375 \cdot 10^3$	$335 \cdot 10^3$
Activation volume (diff)	V_{diff}	m ³ mol ⁻¹	0	$38 \cdot 10^{-6}$	$6 \cdot 10^{-6}$	$4 \cdot 10^{-6}$
Grain size (diff)	d	m	0.001	0.001	0.001	0.001
Grain size exponent (diff)	m	-	2.0	3.0	0	0