

1 **Three-dimensional study of grain scale tensile twinning activity in**
2 **magnesium: A combination of microstructure characterization and**
3 **mechanical modeling**

4 Xun Zeng^a, Chuanlai Liu^{b, *}, Chaoyu Zhao^c, Jie Dong^c, Franz Roters^b, Dikai Guan^{a, *}

5 ^a Department of Mechanical Engineering, University of Southampton, Southampton SO17
6 1BJ, UK

7 ^b Max-Planck-Institut für Eisenforschung GmbH, Max-Planck-Str. 1, Düsseldorf 40237,
8 Germany

9 ^c National Engineering Research Center of Light Alloy Net Forming and State Key
10 Laboratory of Metal Matrix Composite, School of Materials Science and Engineering,
11 Shanghai Jiao Tong University, Shanghai 200240, China

12 *Corresponding authors

13 Email address: dikai.guan@soton.ac.uk (Dikai Guan) c.liu@mpie.de (Chuanlai Liu)

14
15 **Abstract:** Tensile twinning is a main deformation mode in hexagonal close packed structure
16 metals, so it is important to comprehensively understand twinning mechanisms which are not
17 fully disclosed using 2D or small volume 3D characterization techniques. A large area 3D
18 electron backscatter diffraction (EBSD) measurement and crystal plasticity modeling were
19 carried out to investigate the tensile twinning behaviors in a **magnesium (Mg)** alloy. The results
20 showed that tensile twinning activity was underestimated using conventional 2D EBSD scans.
21 When compressed to yield point, the examined twin frequency with 2D was lower than that
22 using 3D EBSD. The effects of Schmid factor (SF) on twinning were investigated. Almost all
23 high Schmid factor ($SF > 0.35$) grains were twinned. A surprising high twin frequency of 82%
24 in middle SF ($0.35 \geq SF \geq 0.15$) grains was observed, which was unexpected since the middle
25 SF grains were believed to be unfavorable for twinning. The twin frequency in low SF

1 (SF<0.15) grains was slightly increased from 2D to 3D EBSD due to the small volume of twins.
2 The shear stress maintained a high level and was homogeneously distributed in high SF grains,
3 facilitating twin nucleation and growth. The shear stress was distributed heterogeneously
4 within the middle SF grains, and twins were nucleated within areas with positive shear stress.
5 The shear stress in low SF grains was not favorable for twinning and twins occurred in the
6 vicinity of stress accumulation. Twinning activities in the same grain varied on different layers.
7 It was attributed to the stress fluctuation derived from grain environment changes.

8 **Keywords:** Mg alloy, 3D EBSD, micro-mechanics, Schmid factor, crystal plasticity modeling

9

10 **1. Introduction**

11 **Mg** is the lightest metallic structural material with a density of 1.738 g/cm³, about 2/3 of
12 aluminum and a quarter of iron. Due to the high critical resolved shear stress (CRSS) of non-
13 basal slip, basal slip and tensile twinning are the dominant deformation modes at room
14 temperature [1-3]. Tensile twinning plays an important role in accommodating the c-axis strain
15 while basal slip can only accommodate the strain parallel to the basal plane. Another major
16 difference is the polarity of twinning that tensile twinning is favored under tension stress along
17 the c-axis or compression along a-axis [4]. As a result, grain orientation or texture has
18 significant effects on twinning activities which can be estimated with Schmid's law [5].
19 However, the macroscopic non-Schmid twinning behavior was reported by many researchers
20 that low Schmid factor (SF) twin variants were formed [6-9]. One explanation was the local
21 stress which deviated from the applied stress. Also dislocation pile-ups [10, 11] and twins [12]
22 at grain boundaries caused a sharp increase in local stress. The low SF twin variants were
23 nucleated to release the local stress and maintain the compatibility of the material [13, 14].
24 Another possible reason was the shear strain accommodation. The low SF twin variants could
25 be formed if they required less strain accommodation compared to the high SF ones [6, 15].

1 While the above efforts shed light on most twinning events, the appearance of some non-SF
2 twins could not be explained by any of these theories. This was attributed to the limitation of
3 2D EBSD: most previous studies of twinning behaviors were based on 2D EBSD data collected
4 from the surface layer of the sample [7, 11, 16-18]. This data contained only one section of the
5 sample and was thus unable to reveal the real twinning occurrence across the entire 3D volume
6 of grains. For example, grains with high twinning SF did not show twins in a 2D EBSD after
7 deformation. However, it was not clear whether the grains had no twins across the entire
8 volume, or just no twins appeared on this 2D section layer. Besides, there were some low SF
9 twins formed at the boundaries which showed poor geometrical compatibility with neighboring
10 grains [19, 20]. Were these non-SF twins initially nucleated at the grain boundaries within this
11 layer or nucleated in bottom/upper parts of the scanned 2D EBSD layer with different grain
12 neighbors?

13 To answer the above questions, 3D characterization techniques have been developed in the past
14 decades. Three dimensional X-ray diffraction (3D XRD) is a non-destructive method to
15 investigate the in situ deformation and recrystallization process. By using high energy X-ray,
16 the 3D XRD method can spatially resolve the local crystallographic orientation, grain shapes,
17 and strain states. Aydiner et al. [21] reported the evolution of stress in parent grain and twins
18 during in situ compression. The effects of parent orientation and grain neighbor on the resolved
19 shear stress (RSS) for twinning were investigated using synchrotron diffraction [22, 23].
20 However, 3D XRD can only index large grains or twins ($>20\ \mu\text{m}$) with obvious diffraction
21 patterns, leading to a relatively low resolution. Another main approach to rebuild the 3D
22 structure of materials is serial sectioning, for example 3D EBSD in Ga Focused Ion Beam–
23 Scanning Electron Microscope (FIB-SEM) systems and recently developed Plasma-FIB (PFIB)
24 systems [24]. It was reported that the morphology of twins varied with SF values [25], and
25 macroscopic non-SF twinning occurred at the low misorientation boundary. Ventura et al. [26]

1 combined high resolution 3D EBSD and micro-tensile testing to study the twinning behaviors
2 in pure Mg. They proposed that basal slip favored twin nucleation with a loading tilted away
3 from the c-axis while pyramidal slip triggered twinning under c-axis loading. With a detailed
4 layer to layer analysis of 3D EBSD data, Paramatmuni et al. [27] found that the stored energy
5 density was a key factor to identify twin nucleation sites. Nevertheless, the examined volume
6 by FIB-EBSD is very small due to its low milling rate, especially in the thickness direction
7 with only tens of microns. Although the removal rate of PFIB in theory could be up to 15,000×
8 faster than a typical Ga + FIB [28], the obtained 3D volume in practice could not be
9 dramatically increased, like $350 \times 350 \times 235 \mu\text{m}^3$ in ref [27] and $500 \times 500 \times 100 \mu\text{m}^3$ in ref
10 [29]. Therefore, PFIB still cannot effectively address the challenges when multi-scale
11 microstructure features need to be investigated simultaneously in detail within one sample (i.e.,
12 investigating fine sized twins in coarse grains requires both large sampling area and small step
13 size). To obtain a large examined volume for 3D EBSD, serial sectioning by mechanical
14 polishing was developed. This method introduces markers, like micro-Vickers indents [30, 31]
15 or reference lines [32, 33], on the sample surface to calculate the material depth removal. An
16 impressive depth removal of 593 μm was achieved which revealed the distribution and
17 morphology of martensite packet and blocks in steels [31]. The main limitation of this approach
18 is sample preparation. Careful marking and measurements of the reference on sample surface
19 are required to ensure that EBSD layers are parallel and homogeneous distributed in the
20 thickness direction.

21 A number of theoretical and numerical frameworks have been developed to investigate the role
22 of local stress distribution, dislocation activation, and grain neighbors on the nucleation and
23 formation of tensile twins in Mg. For example, full-field crystal plasticity modeling and
24 atomistic simulation are widely used. Different lenticular and irregular twin shapes were
25 observed along twinning shear and lateral directions [34], respectively, which is related to the

1 differences in the mobility of the edge and screw components of twinning dislocations. Gong
2 et al. [35] found that the interaction of basal slip and twins would introduce jogs and basal
3 stacking faults in the matrix, and prismatic $\langle a \rangle$ dislocations in the twin. Liu et al. [36-38]
4 combined a phase field model with dislocation density crystal plasticity model to study the
5 stress distribution and dislocation density within parent and twins.

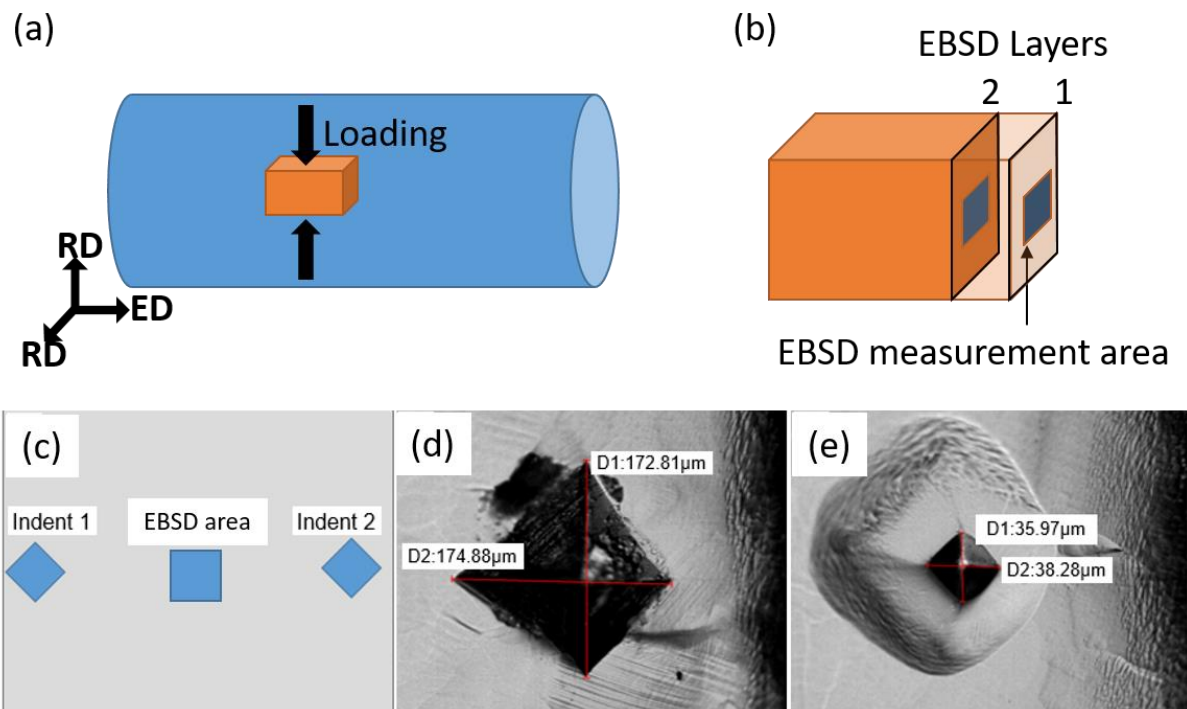
6 In this work, 3D EBSD with a large volume and full-field crystal plasticity modeling are
7 combined to investigate the twinning mechanisms of a Mg alloy. This alloy with an initial weak
8 basal texture provides numerous grains in various orientations, both favorable and unfavorable
9 for twinning. Different from Ga or Plasma FIB-assisted 3D EBSD techniques, repetitive
10 mechanical polishing is applied for the serial sectioning process which enables EBSD
11 characterization with a large examined volume of $1500 \times 1000 \times 600 \mu\text{m}^3$ and fine step size of
12 $0.5 \mu\text{m}$. The EBSD data shows that tensile twinning activities are underestimated in 2D EBSD.
13 Significant increases in the twinning frequency are found when 2D grains in different layers
14 are correlated. While the SF is related to the distribution of the RSS, it does not directly affect
15 the twin nucleation process. The RSS is accountable to the formation of twins, and it varies
16 from layer to layer because of different grain neighbors. These findings are expected to exhibit
17 a statistical view of twinning in Mg alloys and bring new insights into twinning mechanisms
18 from the aspects of grain orientation, grain neighborhood and RSS.

19 **2. Methodology**

20 2.1. Experimental procedure

21 A commercial WE43 alloy supplied by Luxfer MEL Technologies Ltd, as detailed in [39], was
22 used in this study. The rectangular cubes with the dimension of $5(\text{RD}) \times 5(\text{RD}) \times 10(\text{ED}) \text{ mm}$
23 were cut from the extruded bar (RD and ED indicate radial direction and extrusion direction,
24 respectively), as shown in Fig. 1(a). Solution treatment at $525 \text{ }^\circ\text{C}$ for 1 h was carried out to
25 dissolve secondary phases and optimize the grain size for twinning. This sample was then

1 slightly grounded to remove the surface oxidation. Uniaxial compression was applied along
2 one of the RD to a stress of 150 MPa, approximately the yield strength of this material **reported**
3 **in our previous work [11]. The stress control strategy was applied that the loading was stopped**
4 **at a pre-setting upper force limit of 7500 N which corresponded to a stress of 150 MPa, given**
5 **the sample dimension.** This stress restricted rapid twin propagation so that the twin nucleation
6 sites could be identified. After that, serial sectioning and EBSD characterization were applied
7 on the RD-RD plane of the compressed sample, as shown in Fig. 1(b). In the sectioning part,
8 the sample was grounded using grit 4000 SiC foil and polished with 0.25 μm oil-based diamond
9 suspension, followed by final OPS polishing.



10

11 Fig. 1. (a) Schematic of the compression sample, (b) 3D EBSD via serial sectioning, (c)

12 positions of indents and EBSD area, (d) and (e) indents before and after grinding and

13 polishing for the 10th layer scanning, respectively.

14 For measurement of material removal, two micro-hardness indents were introduced at the edge

15 of the samples before grinding and polishing, far away from the EBSD sampling area in the

16 center, as shown in Fig. 1(c). For example, Fig. 1(d) shows one indent introduced after

1 completing the EBSD scan of the 9th layer and before the grinding and polishing for the 10th
2 layer scanning. The depth (h) of indent before and after grinding and polishing can be
3 calculated using the following equation according to the geometry of the Vickers Hardness
4 tester (average length of the diagonal $D = (D1 + D2)/2$, angle of indenter $\alpha = 136^\circ$).

$$h = \frac{D}{2\sqrt{2} \tan(\alpha/2)}$$

5
6 After calculation, h is around 1/7 of D. Based on the measured diagonal length of the indents
7 before and after grinding and polishing in Fig. 1(d-e), the sectioned depth is around 20 μm .
8 This removal control strategy was used in the whole serial sectioning process and the spacing
9 between every two EBSD layers is $20 \pm 3 \mu\text{m}$. According to our preliminary studies, the grain
10 size of the heat treated sample ranges from 3 to 250 μm with an average grain size of about 60
11 μm on a 2D EBSD map. However, the real average grain size in 3D space is expected to be
12 larger than that observed on a single 2D EBSD layer because some very small grains shown in
13 2D image are sectioned on the top or bottom of the grain in 3D space, which will be confirmed
14 in the following result section. Thus, the 20 μm thickness removal is a good balance to exam
15 enough grains at different depth and provides twinning and grain neighbor details of each grain
16 for statistical analysis.

17 The EBSD characterization was carried out on a FEI Nova 450 field emission gun SEM
18 equipped with an Oxford Instruments NordlysNano EBSD detector. Serial sectioning was
19 conducted parallel to the Z-axis (extrusion direction), forming an examined volume of $1500 \times$
20 $1000 \times 600 \mu\text{m}^3$ with a section thickness of $20 \pm 3 \mu\text{m}$ resulting in 30 (X–Y) slices.

21 The post analysis of the EBSD data was carried out with the MTEX package in Matlab [40].
22 Grain reconstruction was carried out with a misorientation angle threshold of 5 degrees. The
23 cleaning process removed the non-indexed and incorrectly indexed pixels from evaluation. The
24 IPF maps of all layers generated by MTEX (Fig. S1) and raw images from AZtechCrystal

1 without any cleaning (Fig. S2) are provided in the supplementary materials. It can be clearly
2 seen the gentle clean-up process by using MTEX removes the wild spikes. The difference
3 between MTEX and raw images is negligible because of high indexing rates obtained in most
4 of the EBSD scans, as is provided in Fig. S2. Moreover, as a typical example, the EBSD map
5 after MTEX processing and the raw image of layer 21 are directly compared in Fig. S3. It
6 confirms again the clean-up process used in this work does not manipulate the EBSD data or
7 introduce artificial grains that affect the main results and conclusions. The reason why we use
8 MTEX is that the polarity of twinning mechanism is not considered in commercial EBSD
9 software. Twin variants are indexed by the minimum deviation angle approach: (1) calculate
10 the potential six variant orientations by the misorientation of 86 degree around the $\langle 11\bar{2}0 \rangle$
11 axis, (2) calculate the misorientation angle between real twins orientation and ideal twin variant
12 orientation, (3) index the twin variant with lowest misorientation angle which should be below
13 5 degree. The six tensile twin variants shown in Table 1 are categorized into three groups,
14 T1&T4, T2&T3, and T5&T6, based on their rotation axis. For, example, twin variant T1 with
15 $[11\bar{2}0]$ rotation axis and T4 with $[\bar{1}\bar{1}20]$ belong to the same twin variant group and they
16 typically have comparable macroscopic SF values. For the sake of brevity, all macroscopic SF
17 afterwards is termed as SF.

18 Table 1. Tensile twin variants in Mg alloys.

Twin variant	Twinning system	Rotation axis
T1	$(1\bar{1}01)[\bar{1}120]$	$[11\bar{2}0]$
T4	$(1\bar{1}0\bar{1})[\bar{1}10\bar{2}]$	$[\bar{1}\bar{1}20]$
T2	$(10\bar{1}\bar{1})[\bar{1}01\bar{2}]$	$[1\bar{2}10]$
T3	$(10\bar{1}1)[\bar{1}012]$	$[\bar{1}2\bar{1}0]$
T5	$(01\bar{1}1)[0\bar{1}12]$	$[\bar{2}110]$
T6	$(0\bar{1}11)[01\bar{1}2]$	$[2\bar{1}\bar{1}0]$

19

20 2.2. Full-field crystal plasticity simulations

1 In order to reveal more quantitative insights into the complex micromechanics of the WE43
 2 alloy, *i.e.* local stress distributions, strain partitioning, slip system activities, and their roles in
 3 the determination of tensile twin nucleation, full-field dislocation density-based crystal
 4 plasticity simulations were carried out on the basis of the 3D EBSD microstructure mapping
 5 [36-38, 41].

6 The total deformation gradient \mathbf{F} is decomposed into an elastic part \mathbf{F}_e and a plastic part \mathbf{F}_p , as
 7 $\mathbf{F} = \mathbf{F}_e \mathbf{F}_p$. The evolution of \mathbf{F}_p is related to the plastic velocity gradient \mathbf{L}_p according to the
 8 flowing rule $\dot{\mathbf{F}}_p = \mathbf{L}_p \mathbf{F}_p$. \mathbf{L}_p is given by the superposition of shear on all slip systems, as

$$9 \quad \mathbf{L}_p = \sum_{\alpha=1}^{N_s} \dot{\gamma}_s^\alpha \mathbf{m}_s^\alpha \otimes \mathbf{n}_s^\alpha,$$

10 where $\dot{\gamma}_s^\alpha$ describes the shear rate on slip system α , and \mathbf{m}_s^α and \mathbf{n}_s^α indicate the slip direction
 11 and the slip plane normal of the N_s slip systems. It is worth noting that the plastic deformation
 12 is assumed to be only contributed by dislocation slip in the current simulations, since the
 13 current work focuses on the nucleation of tensile and not twin growth.

14 The shear rate of mobile dislocations on a slip system is described by the Orowan equation as
 15 [42]:

$$16 \quad \dot{\gamma} = \rho_m b v_0 \exp \left[-\frac{Q_a}{k_B T} \left\{ 1 - \left(\frac{|\tau_{\text{eff}}|}{\tau_p} \right)^p \right\}^q \right] \text{sign}(\tau),$$

17 where ρ_m is the mobile dislocation density, b is the magnitude of the Burgers vector, and v_0 is
 18 the reference dislocation glide velocity, Q_a is the activation energy for dislocation glide to
 19 overcome the obstacles, k_B is the Boltzmann constant, T is temperature, τ_p is the Peierls stress,
 20 and p and q are fitting parameters. τ_{eff} is the effective resolved shear stress as the driving force
 21 for dislocation slip, and is calculated as the resolved stress reduced by the passing stress.

22 The evolution of the mobile dislocation density is determined by dislocation multiplication,
 23 annihilation, and dipole formation, *i.e.*

$$24 \quad \dot{\rho}_m = \frac{|\dot{\gamma}|}{b\Lambda} - \frac{2\check{d}}{b} \rho_m |\dot{\gamma}| - \frac{2\hat{d}}{b} \rho_m |\dot{\gamma}|.$$

1 \hat{d} indicates the distance below which two dislocations can form a dipole, and \check{d} is the distance
2 between two dislocations below which they annihilate. Λ is the dislocation mean free path,
3 describing the strain hardening behavior, and is expressed as:

$$4 \frac{1}{\Lambda} = \frac{1}{d_g} + \frac{\sqrt{\rho_f}}{c},$$

5 where d_g is the grain size, ρ_f is the forest dislocation density, and c is a hardening parameter.

6 This relationship suggests that a decrease in grain size results in a decrease in the dislocation
7 mean free path, thereby leading to a stronger strain hardening behavior. However, it is worth
8 noting that an average grain size of 60 μm is used for all the grains in the current work. In order
9 to consider influence of the distribution of grain size on the mechanical behavior, it is necessary
10 to assign varying values of d_g to different grains in the model. Furthermore, the grain size
11 effect can also be incorporated by developing a non-local crystal plasticity constitutive model
12 that includes dislocation flux or geometry necessary dislocations [41].

13 The balance relation for linear momentum is described as $\text{Div } \mathbf{P} = \mathbf{0}$, where \mathbf{P} is the first Piola-
14 Kirchhoff stress, and can be calculated from the second Piola-Kirchhoff stress \mathbf{S} . \mathbf{S} is calculated
15 as $\mathbf{S} = \mathbb{C}\mathbf{E}_e$, where \mathbb{C} is the stiffness tensor and \mathbf{E}_e is the elastic Green-Lagrange strain. \mathbf{E}_e is
16 given by $\mathbf{E}_e = \frac{1}{2}(\mathbf{F}_e^T\mathbf{F}_e - \mathbf{I})$.

17 2.3. Simulation setup

18 For the full-field mechanical simulations, the model was directly created using the full 3D
19 EBSD orientation data. Since the current work focused on the investigation of tensile twin
20 nucleation rather than twin growth, the experimental analysis was based on the deformed
21 microstructure at a relatively small strain of 1%. It was reasonable to assume that the grain
22 morphology and the orientation of parent grains only had very minor changes after just 1%
23 strain. However, the thin twins within the parent grain from the deformed EBSD data should
24 be removed to create the initial high-fidelity simulation model. To this end, the orientation map

1 at 1% strain was cleaned using the TSL OIM software [43, 44], *i.e.* the orientation within thin
2 twins was assigned with the orientation from the parent grain. **A detailed description of the**
3 **process is given in the supplementary material.**

4 In the current work, basal $\langle a \rangle$ ($\{0001\}\langle 11\bar{2}0 \rangle$), prismatic $\langle a \rangle$ ($\{10\bar{1}0\}\langle 11\bar{2}0 \rangle$), and
5 pyramidal $\langle c+a \rangle$ ($\{10\bar{1}2\}\langle \bar{1}011 \rangle$) slip systems are considered to accommodate the plastic
6 deformation. **However, the actual activity of each slip system within a material point depends**
7 **on the local stress status, which is related to the orientation of the material point itself and its**
8 **environments, and the applied boundary conditions.** Monotonic compression loading under
9 periodic boundary conditions was applied to the representative volume element, at a strain rate
10 of 0.1s^{-1} . **The Peierls stress for different slip systems is the key material parameters in the**
11 **constitutive model, which determines the activation of different deformation modes. These**
12 material parameters for the constitutive model were calibrated by fitting the simulated and
13 experimental stress-strain curves, as shown in Fig. 2d. The full set of material parameters is
14 listed in Table 2. **Similar material parameters have been benchmarked in the other reference**
15 **[45], which also modelled the plastic behavior of WE43 alloy as used in the current work.**

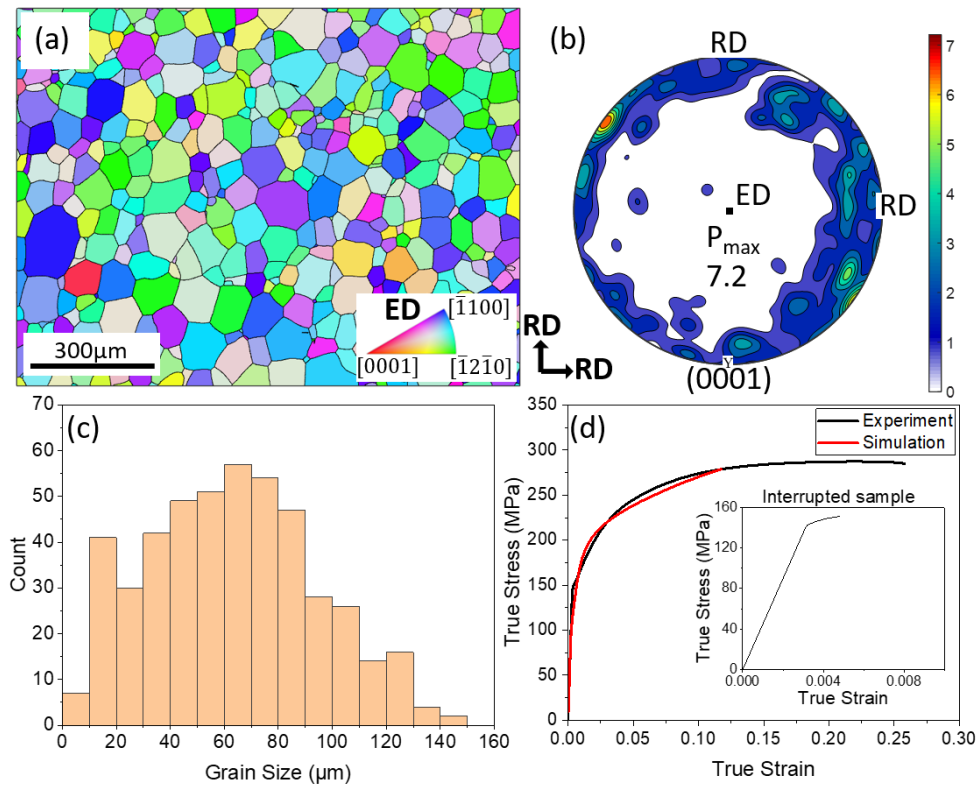
16 Table 2. Material parameters for the constitutive model.

Crystal						
plasticity	b (m)	v_0 (ms^{-1})	Q_a (J)	τ_p (Pa)	p	q
model						
Basal	3.20×10^{-10}	1.0×10^{-5}	7.0×10^{-20}	2.0×10^7	1.0	1.0
Prismatic	3.20×10^{-10}	1.0×10^{-5}	7.0×10^{-20}	9.5×10^7	1.0	1.0
Pyramidal	6.11×10^{-10}	1.0×10^{-5}	7.0×10^{-20}	1.6×10^8	1.0	1.0
Elastic						
constants	C_{11} (Pa)	C_{33} (Pa)	C_{44} (Pa)	C_{12} (Pa)	C_{13} (Pa)	
	5.93×10^{10}	6.15 $\times 10^{10}$	1.64×10^{10}	2.57 $\times 10^{10}$	2.14 $\times 10^{10}$	

17 **3. Results**

18 3.1. General information of the deformed sample

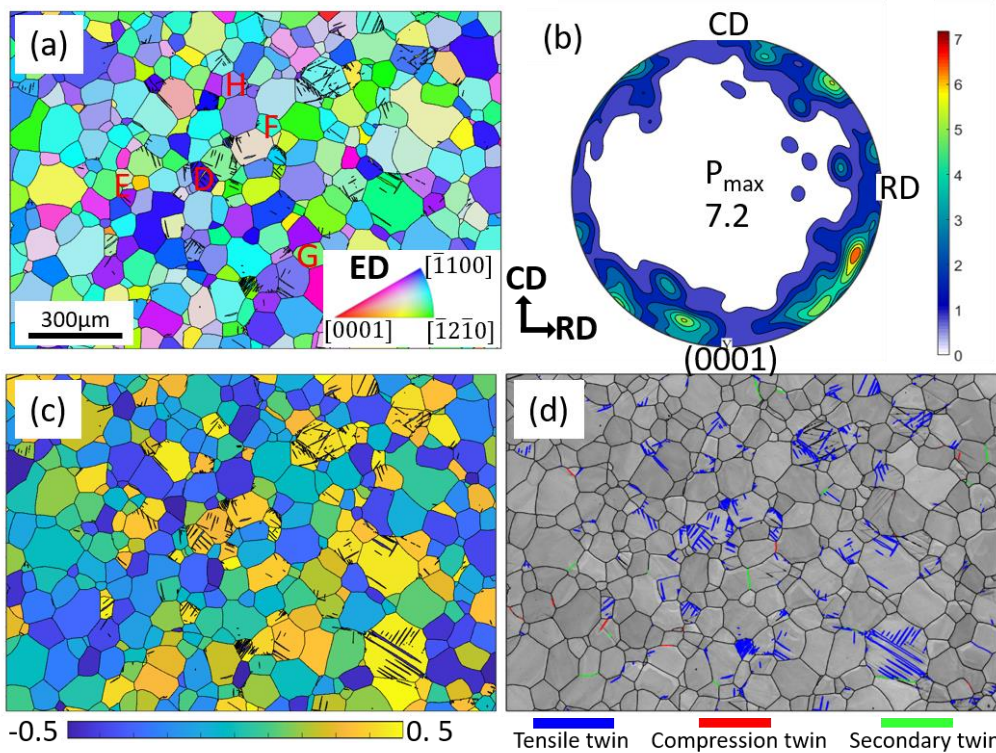
1 The initial microstructure and texture of the examined alloy are shown in Fig. 2. A twin-free
 2 microstructure with equiaxed grains is observed in the EBSD orientation map. In the (0001)
 3 pole figure, a weak fiber texture with the c-axis of most grains aligned perpendicular to ED can
 4 be found, in agreement with Ref. [11]. The average grain size is 60 μm , as shown in Fig. 2(c).
 5 Fig. 2(d) shows the true stress-strain curves from both simulation and measured tensile tests.
 6 The alloy starts to yield at 150 about MPa (0.49 % strain) which is also the stress where the
 7 test was interrupted for the investigated 3D EBSD sample (the stress-strain curve of this
 8 interrupted sample is superimposed in Fig. 2(d)).



9
 10 Fig. 2. Grain information of the WE43 alloy: (a) EBSD IPF map, (b) basal pole figure, (c)
 11 grain size distribution, (d) true stress-strain curves of experiment and simulation; the
 12 superimposed figure shows the compression stress-strain curve of the interrupted sample for
 13 serial sectioning EBSD analysis.

14 The 3D sectioning of the required volume resulted in 30 layers of the microstructure, which
 15 are included in Fig. S1 of the supplementary material for the sake of brevity. A random layer,
 16 layer 21, is picked to present the grain information of the sample. All the grains on layer 21 are

1 also tracked in other layers by matching the grain orientations and positions. In Fig. 3(a), a total
 2 number of 341 grains are observed on layer 21. About one quarter of the grains have lamellar
 3 twins. The texture after compression is very similar to the initial texture due to the low volume
 4 fraction of twins at **150 MPa stress**. It should be mentioned that the same specimen reference
 5 with compression direction (CD) and radial direction aligned parallel to X and Y axis,
 6 respectively, is used for all EBSD maps afterwards. The SF map for tensile twinning is shown
 7 in Fig. 3(c). It is noteworthy that the maximum SF among six tensile twin variants is used for
 8 the SF map. The grain boundary map in Fig. 3(d) shows that more than 95% of the twins are
 9 tensile twins, which are the main focus of this work.

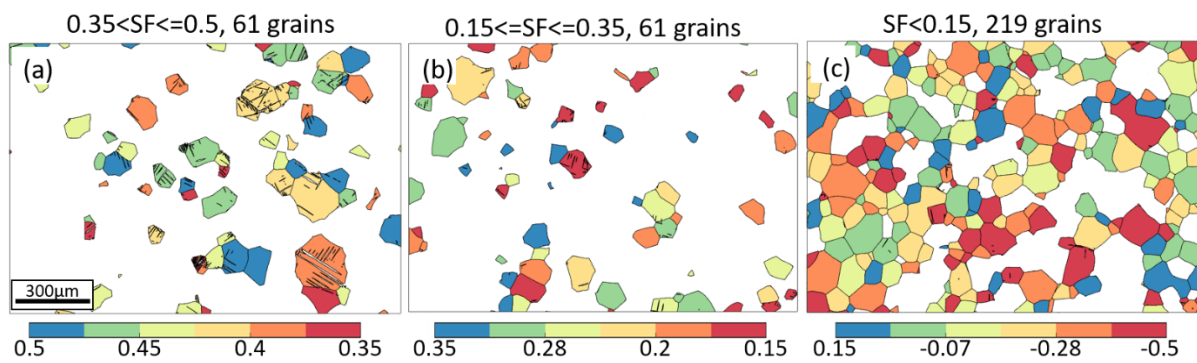


10
 11 Fig. 3. EBSD maps of the compressed sample on layer 21: (a) EBSD IPF map, (b) basal pole
 12 figure, (c) SF map for tensile twinning, (d) grain boundary map.

13 3.2. Effect of Schmid Factor (SF) on twinning behavior

14 Since the SF plays an important role in twinning, it is of interest to study the twinning behavior
 15 of grains with different SF values for tensile twinning. All grains on layer 21 are categorized
 16 into three groups: high tensile twinning SF grains ($0.5 \geq SF > 0.35$), middle SF grains

1 (0.35 \geq SF \geq 0.15) and low SF grains (-0.5 \leq SF \leq 0.15). The number of grains in the different
 2 SF groups are 61, 61, and 219, respectively. Two thirds of the grains have low SF values which
 3 means the texture is not favorable for twinning. Detailed SF maps showing these different SF
 4 groups can be found in Fig. 4. The figure shows that most twins are found in high SF grains
 5 while twinning is almost negligible in low SF grains. Besides, the number of twins per grain
 6 and diameter of twins are obviously higher in high SF grains than in other groups.



8 Fig. 4. Schmid factor (SF) maps of the different grain groups on layer 21.

9 A statistical evaluation of twin frequency is shown in Table 3. It is not surprising that the twin
 10 frequency on layer 21 decreases from 85% to 11% as the SF decreases which shows the
 11 dependency of twinning on SF. When the grains on layer 21 are tracked in 3D EBSD data, the
 12 twin frequencies of all SF groups are increased, which is detailed later in section 3.4. Almost
 13 all the grains (98%) with high SF are twinned in 3D EBSD. Moreover, the twin frequency of
 14 middle SF grains jumps from 54% to 82%, indicating that twinning activity in middle SF grains
 15 is underestimated in 2D EBSD. The twin frequency increased only slightly from 11% to 16%
 16 in low SF grains. This statistic analysis confirmed that 3D EBSD reveals more reliable grain
 17 and twin information which might be missing in 2D characterization.

19 3.3. Effects of SF on resolved shear stress (RSS)

20 The drawback of using the SF for twin prediction is that it assumes that the local stress in the
 21 individual grains is the same to the applied macroscopic stress. However, this assumption fails
 22 due to the complicated co-deformation of grains in polycrystalline materials. For example,

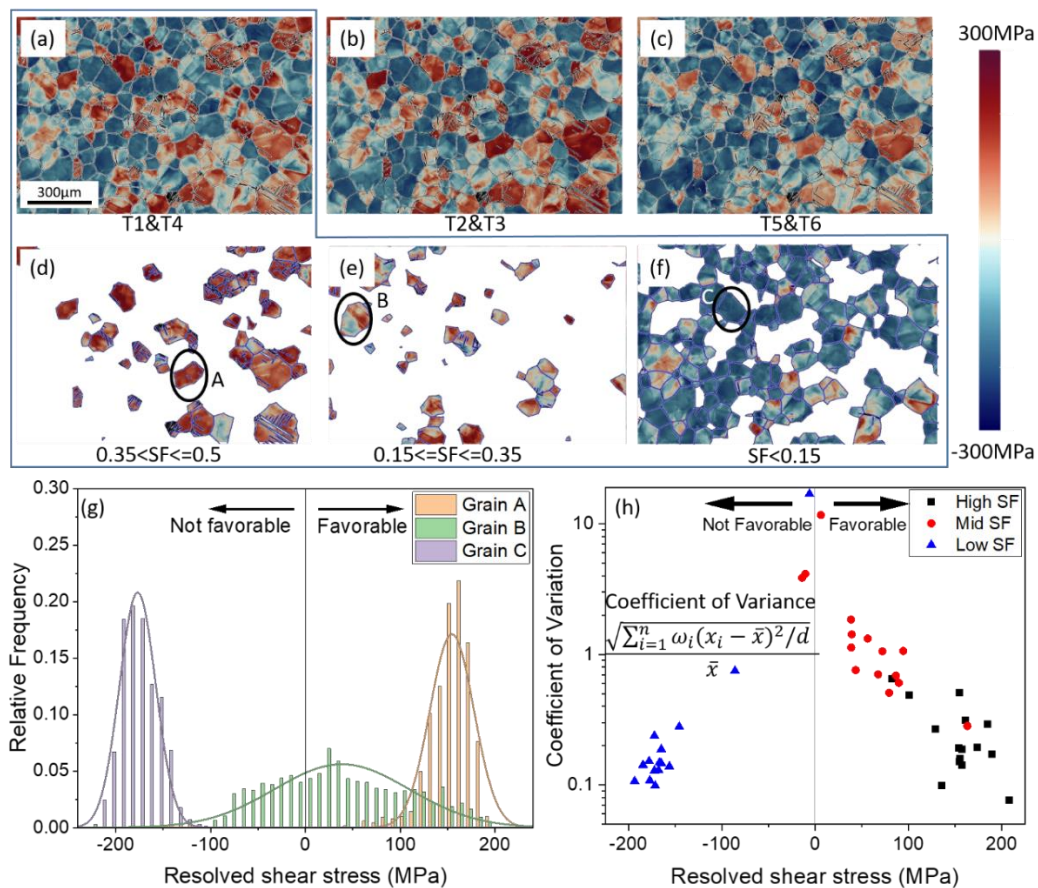
1 dislocation pile-ups and twins in a neighboring grain can cause sharp peaks in local stress.
 2 Besides, the effect of the grain boundary is not considered while it is the preferred site for twin
 3 nucleation. In fact, the local stress is the direct driving force for twin nucleation. To investigate
 4 the effects of local stress on twin morphology and variant selection, crystal plasticity modeling
 5 is carried out based on the 3D EBSD data.

6 Table 3. Twinning frequency of grain groups with different Schmid factor (SF).

Tensile Twinning SF value	Number of grains	Twin frequency on layer 21	Twin frequency in all layers
0.35-0.5	61	85%	98%
0.15-0.35	61	54%	82%
-0.5-0.15	219	11%	16%
All	341	25%	36%

7
 8 The RSSs of layer 21 for different twin variants are shown in Fig. 5 while those of other layers
 9 can be found in Fig. S4. Since the twin variants in the same group, like T1 and T4, share an
 10 equivalent twinning plane and direction (Table 1), the distributions of RSS for them are similar.
 11 Thus, only three RSS maps for different twin variant groups are shown here which are overlaid
 12 with grain boundary maps. **It is worth noting that the local stress state may deviate significantly**
 13 **with the macroscopically applied stress, due to the complex interaction among grains. For**
 14 **example, the frequency histogram in Fig. 5 (g) shows the twin resolved shear stress distribution**
 15 **in Grain B. It indicates that the average shear stress is 38.5 MPa, while the local shear stress**
 16 **distribution approximately follows normal distribution with a range from around -100 MPa to**
 17 **200MPa. The deviation of the local stress state from the macroscopic stress is also the origin**
 18 **of the activation of non-SF twins.** An inhomogeneous distribution of the RSS is observed, some
 19 grains (marked in blue) show negative RSS while others (red) have high positive RSS. Fig.
 20 5(d-f) illustrates the effect of the SF on the RSS, taking the RSS for T1&T4 group as an
 21 example. The first thing to note is that high SF grains are normally colored in dark red which

1 means they have very high RSS. On the contrary, most of the grains with low SF are blue with
 2 negative RSS. The RSS for middle SF grains show a combination of positive and negative RSS.
 3 In other words, heterogeneity of intragranular RSS in middle SF grain is observed while the
 4 distributions of RSS in high and low SF grains are more uniform. This tendency is confirmed
 5 in Fig. 5(g) where three representative grains from these three SF groups, grain A (SF = 0.38),
 6 B (SF = 0.19) and C (SF = -0.38) circled in Fig. 5(d-f), are picked to show their RSS distribution.
 7 Grain A (or C) shows intense peaks at highly positive (or negative) RSS. The RSS of grain B
 8 varies in a wide range. It should also be noted the RSS for different twin variants in the high
 9 SF grains maintain a high level despite of minor fluctuations, for example grain A with a high
 10 RSS for T1&T4 also shows relatively high RSS for T2&T3 and T5&T6 in Fig. 5(a-c).



11
 12 Fig. 5. RSS maps of layer 21 for: (a-c) the different twin variant groups, (d-f) different SF
 13 grains, (g) RSS distribution of three representative grains as shown in (d-f), (h) statistical
 14 coefficient variance of different SF grains.

1 A statistical evaluation of the coefficient variance of the RSS from 15 randomly picked grains
2 in each SF group (shown in Fig. S5) is shown in Fig. 5(h). The coefficient variance of both
3 high and low SF grains are mostly below 0.2, indicating a homogeneous distribution of the
4 RSS in the grain. Meanwhile, the variance of middle SF grains are around 1, much higher than
5 the former two groups. This different distribution of RSS affects the twin size which will be
6 discussed later.

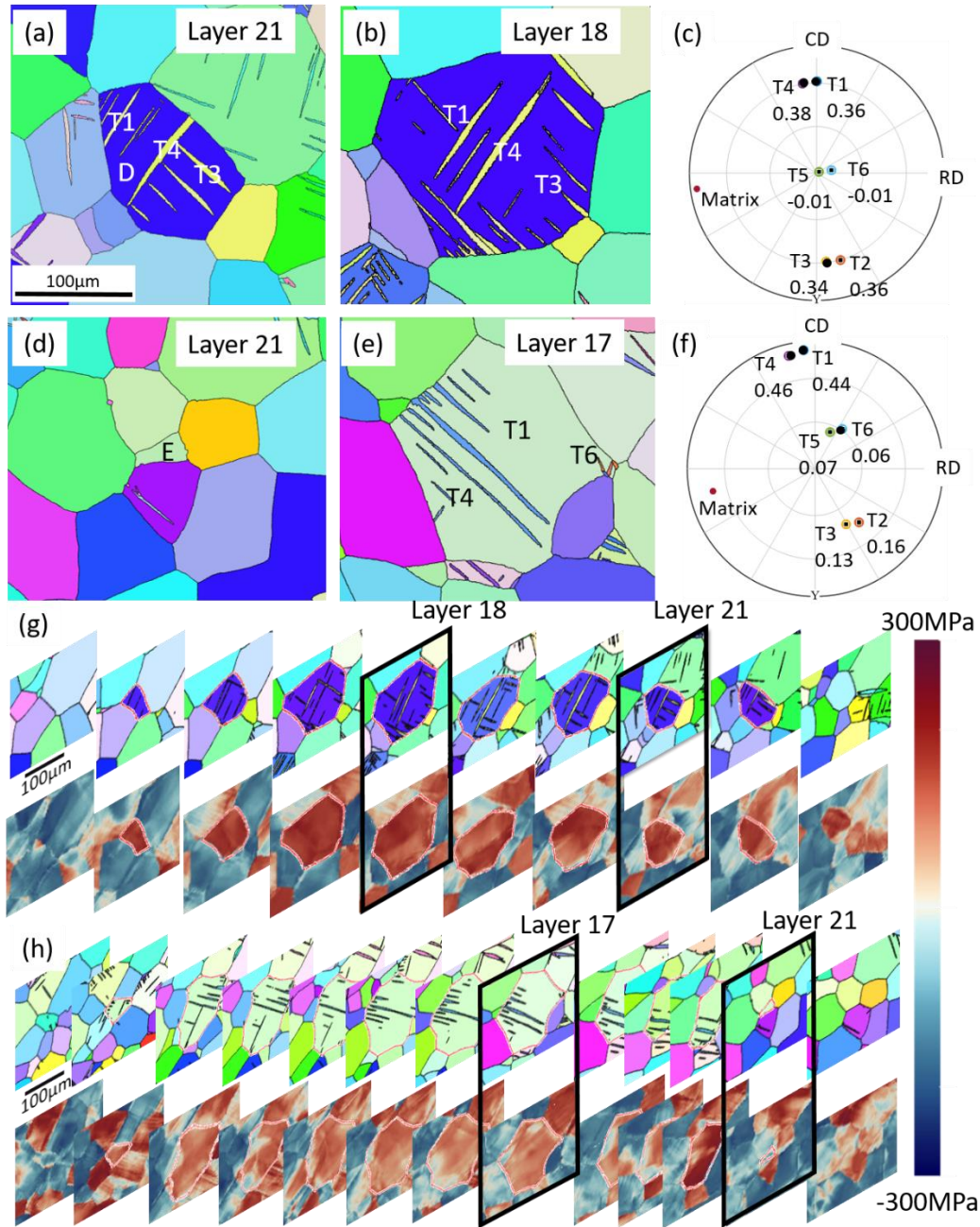
7 3.4. 3D characterization of twins in different SF grains

8 As mentioned above, distinctive twinning activities are observed in different SF groups. This
9 seems to be related to the RSS distribution. To have a more precise view, one or two
10 representative grains in each SF group are picked, and the corresponding 3D structures are
11 studied in detail in the following.

12 3.4.1. High tensile twinning SF grains

13 On layer 21, a twinned and an untwinned grain with high SF, grain D and E, respectively, are
14 shown in Fig. 6. In grain D, some large twins are found to span through the parent, as shown
15 in Fig. 6(a). The twins are aligned parallel to each other. On layer 18, the same grain is found
16 to have a large dimension and more twins are observed. The calculated orientations of six
17 tensile twinning variants are shown in Fig. 6(c). By matching the real and potential twin
18 orientations, these twins are indexed as T1, T3, and T4 according to the definition in Table 1.
19 The variety of twins is attributed to the minor difference in SF value. Grain E in the center of
20 Fig. 6(d) has a maximum tensile twinning SF of 0.46, but it does not have any twins on layer
21 21. However, this grain actually has several twins on layer 17 and the size of grain E is much
22 larger than it appears on layer 21. While the highest SF twin variants T1 and T4 (SF=0.44, 0.46)
23 are the dominant twin variants, some low SF variant T6 (SF=0.06) occur at the conjunction of
24 different grains. The whole morphology of these two grains on different layers are illustrated
25 in the form of 3D EBSD and the corresponding RSS maps are shown in Fig. 6 (g-h). It is clear

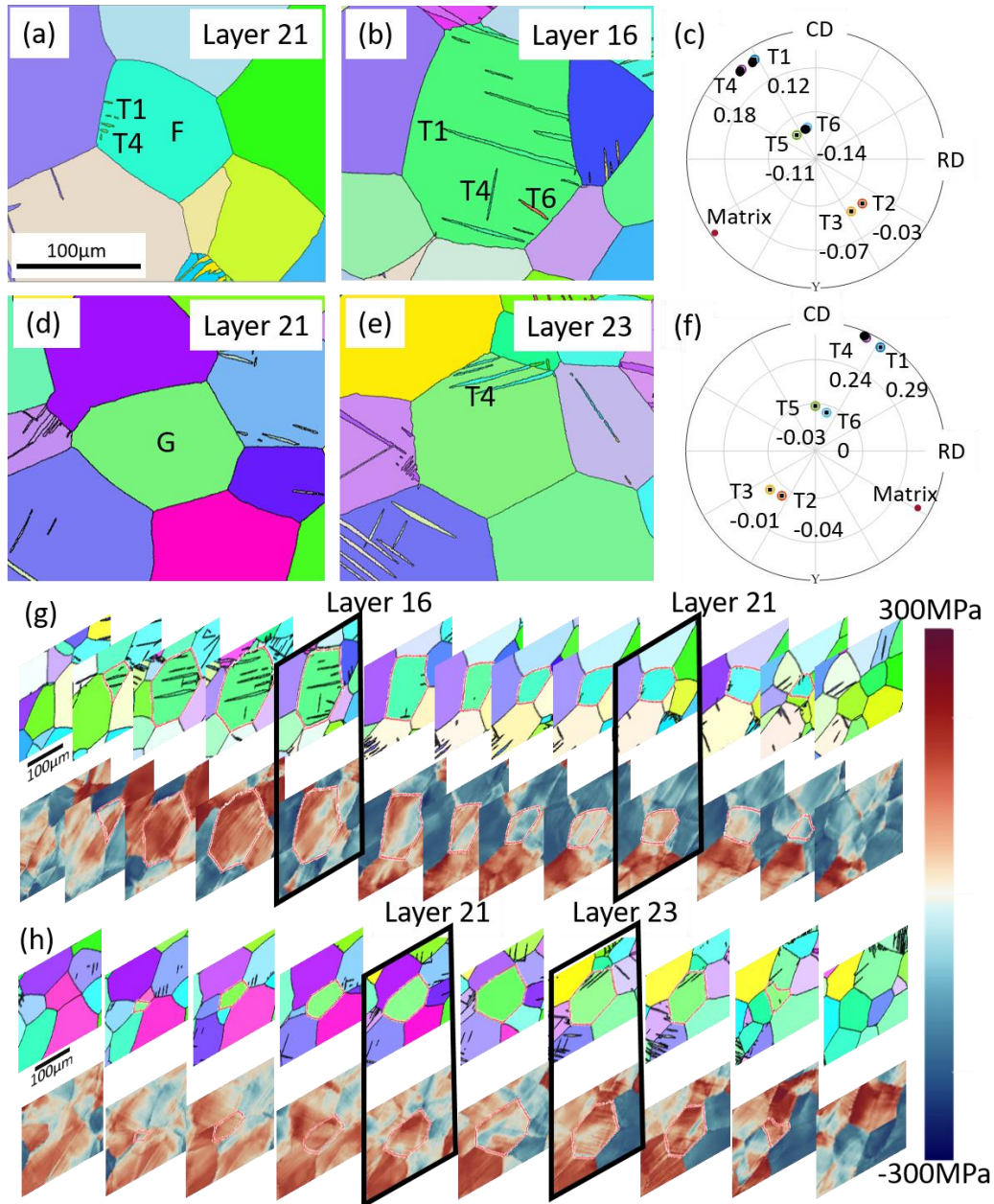
1 that large twins existed on almost all layers of high SF grains. In addition, the RSS is evenly
 2 distributed through the matrix and maintains a high level on most layers. The deviation of grain
 3 E between 2D and 3D EBSD confirms that 3D characterization is indispensable to explore the
 4 real environment information around the investigated grains.



5
 6 Fig. 6. EBSD maps of high SF grains: (a-b) twinned and (d-e) untwinned grain in different
 7 layers, (c) and (f) corresponding orientation of matrix and twin variants, (g) and (h) 3D
 8 EBSD and RSS of the grains.

1 3.4.2. Middle tensile twinning SF grains

2 The twinning behaviors in middle SF grains are shown in Fig. 7. Compared to Fig. 6(a), fewer
 3 twins are observed in grain F, and the twins are much smaller in Fig. 7(a). This seems
 4 reasonable as the parent grain has a lower SF ($SF=0.18$), thus is less favorable for twinning.

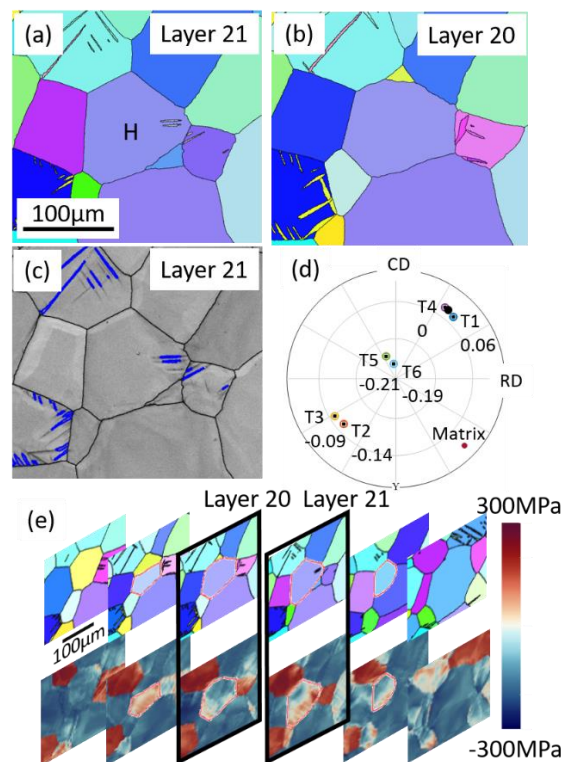


5
 6 Fig. 7. EBSD maps of middle SF grains: (a-b) twinned and (d-e) untwinned grain in different
 7 layers, (c) and (f) corresponding orientation of matrix and twin variants, (g) and (h) 3D
 8 EBSD and RSS of the grains.

1 However, this is not always the case for 3D EBSD characterization. Some large twins and
 2 different variants are observed on layer 16 despite the SF being relatively low, as shown in Fig.
 3 7(b) and (c). An untwinned grain G with middle SF on layer 21 is shown in Fig. 7(d). However,
 4 tensile twins are observed on other layers as observed for grain E. While high twinning
 5 activities are observed in almost all layers of the high SF grains, the middle SF grains show
 6 various degrees of twinning (in amount and size) on different layers, as shown in Fig. 7(g) and
 7 (h). In terms of RSS distribution, grain F shows high RSS on layer 14-16 which exhibit
 8 advanced twinning activities, and low RSS are observed on layer 17-21 in agreement with the
 9 small twins. This link between RSS and twinning activities is also confirmed in grain G with
 10 large twins and high RSS on layer 23 and 24.

11 3.4.3. Low tensile twinning SF grain

12 In terms of twinning in low SF grains, one example of a twinned grain is shown in Fig. 8.



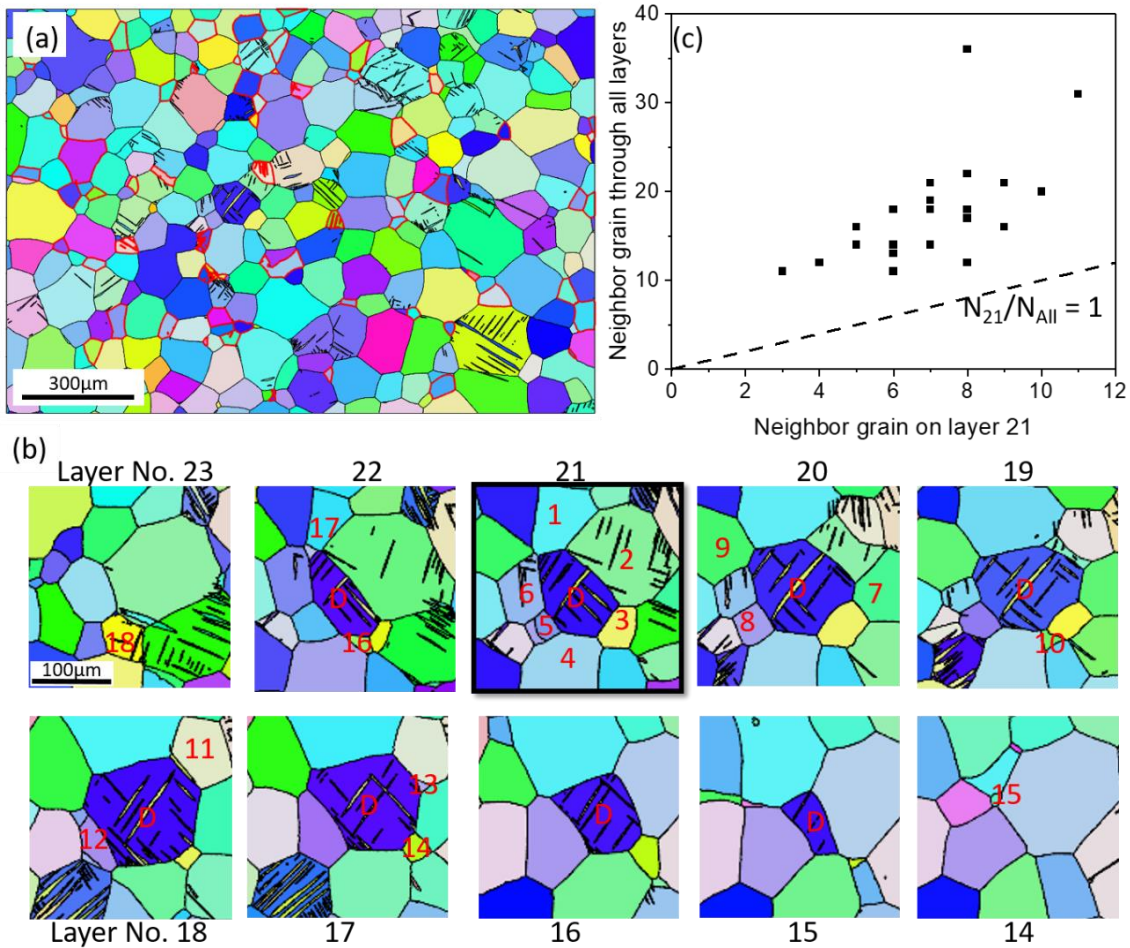
13
 14 Fig. 8. EBSD maps of low SF grains: (a-b) twinned and grain in different layers, (c) band
 15 contrast and boundary map, (d) corresponding orientation of matrix and twin variants, (e) 3D
 16 EBSD and RSS of the grains.

1 Fig. 8(a) shows only two tiny twins are found. The grain boundary map in Fig. 8(c) shows that
2 these twins are nucleated from the right side boundary of the grain. The twins are only observed
3 on layer 21, Fig. 8(e). Based on the basal pole map in Fig. 8(d), these twins are indexed as
4 variant T4 with a SF of 0. In this case, the calculated shear stress on variant T4 is 0 and
5 theoretically twins should not occur. However, a RSS peak is observed on layer 21 which
6 matches the location of twins in Fig. 8(e), although the RSS is generally negative in most layers.
7 The low SF grains are not favorable for twinning and twin growth is hindered.

8 3.5. Effect of grain neighbors on twin nucleation

9 The strain accommodation from grain environment (e.g., geometric compatibility factor, m')
10 have been used in explaining non-SF twinning activities when these twins have a high m' [19,
11 20]. However, in some cases, tension twin variants with low SF and low m' were still observed.
12 One possible explanation is these tension twins are nucleated above or below the examined
13 surface of 2D EBSD where the twinned parent grain has different neighboring grains. However,
14 it has been a challenge to get all the neighboring grain information in 2D EBSD. The current
15 3D EBSD allows us to investigate the changes of grain neighbor relationships. As grains are in
16 different depths of the materials, some new grains may be found and some may disappear on
17 certain layers. Fig. 9(a) shows the orientation map of layer 20. Comparing to layer 21, 42 out
18 of 320 grains (marked with red boundaries) on layer 20 are different from those exist on layer
19 21. These different grains definitely introduce new boundaries and affect the strain
20 accommodation. The example in Fig. 9(b) shows the orientation map of grain D on different
21 layers. On layer 21, grain D has six neighboring grains, as marked in the figure. By tracking
22 the same grain in the 3D EBSD data, another three grains come into contact with grain D on
23 layer 20, introducing different grain pair relationships. The total number of neighbors of grain
24 D through all layers is 18, much higher than that observed on layer 21. Fig. 9(c) shows the
25 statistical data of neighboring grain number from 25 randomly picked grains. The number of

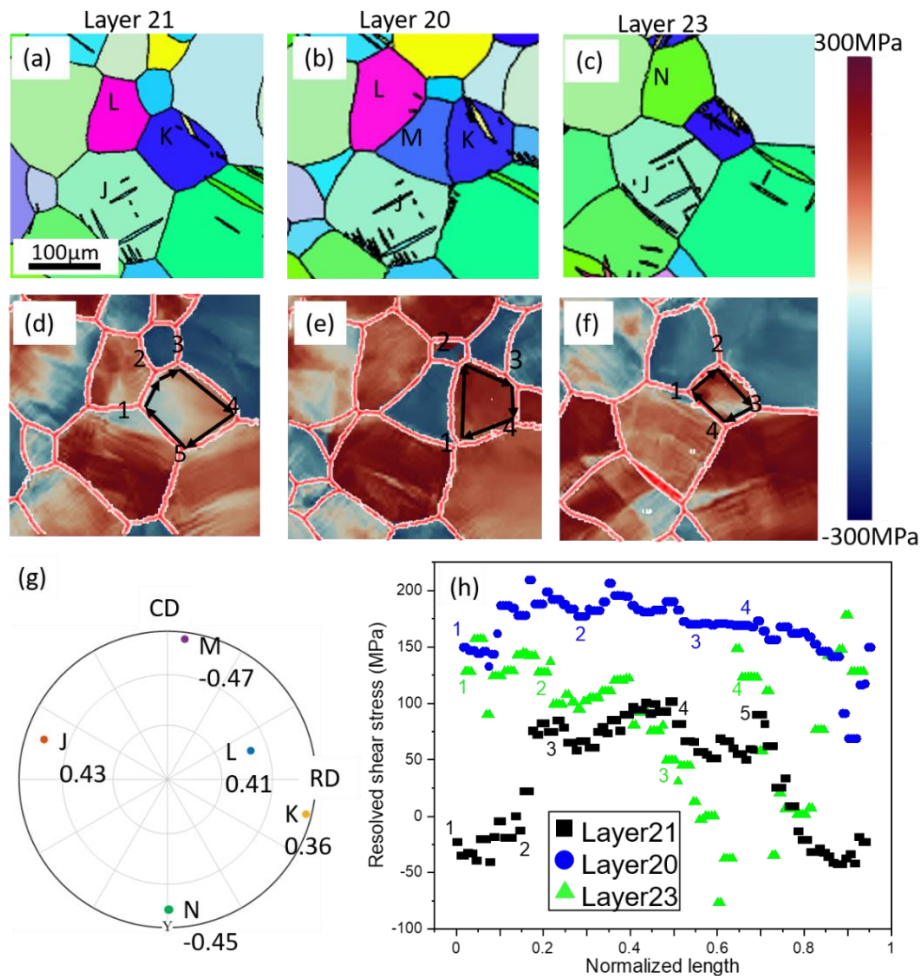
1 neighboring grains is dependent on the grain size as large grains tend to span more layers and
 2 have more neighboring grains. The average number of neighboring grains on layer 21 and all
 3 layers for these grains are 7 and 17, respectively. This means that more than half of the
 4 neighboring grain information is missing in 2D EBSD.



5
 6 Fig. 9. (a) EBSD map of layer 20, (b) neighbors of grain D on different layers, (c) number of
 7 neighboring grain on layer 21 (N_{21}) versus all layers (N_{All}).

8 As mentioned in section 3.4, the observed twinning activity in the same grain can vary from
 9 layer to layer. This is attributed to the fluctuation of RSS caused by the different grain
 10 environments. How neighboring grains can affect the RSS is shown by the following example.
 11 Grain J, K, and L are adjacent grains on layer 21, as shown in Fig. 10(a). Grain J and K are
 12 twinned while grain L is twin-free. Their basal poles are aligned perpendicular to the
 13 compression load (Y axis), indicating that they are all favorable for twinning, Fig. 10(g). The

1 corresponding RSS map in Fig. 10(d) shows a relatively low RSS region at their adjacent
 2 boundaries. In Fig. 10(h), the RSS of grain K along the path 5-1-2 near adjacent boundaries
 3 stays negative. When it comes to layer 20, grain M, oriented unfavorable for twinning, is found
 4 to separate the former three grains. Some new tiny twins are observed in grain L and J, and the
 5 twins are larger in grain K, as shown in Fig. 10(b). Grain M has a negative RSS due to its hard
 6 orientation. Compared to the RSS on layer 21, the RSS in grain J, K, and L are obviously
 7 increased on layer 20, Fig. 10(e). The average RSS of grain K is doubled from layer 21 to 20,
 8 as shown in Fig. 10(h). A similar phenomenon is also observed on layer 23 where the RSS of
 9 grain K is increased along the path 1-2 at the boundary with hard orientated grain N.



10

11 Fig. 10. Effect of neighboring grains on the RSS: (a-c) EBSD maps of grains in different
 12 layers, (d-f) corresponding RSS maps, (g) grain orientations and their twinning SF, (h) RSS
 13 along boundary areas.

1 4. Discussion

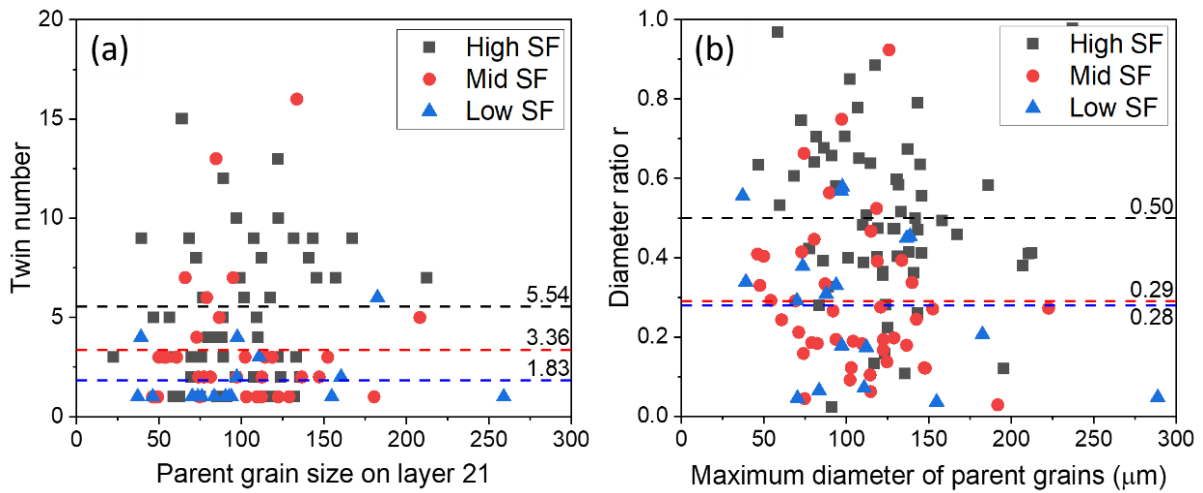
2 It is well known that basal slip and tensile twinning are the dominant deformation modes in
3 Mg alloys at room temperature. Because the CRSS ratio of basal slip to tensile twinning in Mg
4 single crystals was reported to be in the range of 1:2-4 [46, 47], it appears that basal slip is
5 more likely to be activated than tensile twinning. One of our findings is that tensile twinning is
6 underestimated in 2D EBSD compared to 3D EBSD. This is shown in Table 3, i.e. the overall
7 twin frequency increases by 50% from layer 21 (25%) to all layers in 3D EBSD (36%). Since
8 2D EBSD can only exhibit one section of the grain, it can happen that twins occur outside of
9 this section, as shown in Fig. 6(d) and Fig. 7(d). Consequently, the contribution of twinning to
10 the deformation process of Mg alloy is underestimated. A surprising high twin frequency of
11 82% is observed in middle SF grains, much higher than reported in the work of other
12 researchers [7, 48] using conventional 2D EBSD. It should be mentioned that the sample is
13 only deformed up to the yield stress of 150 MPa. According to the equation $\sigma_{twin} = \sigma \times SF$
14 [5], the calculated shear stress for tensile twinning in middle SF grains ranges from 22.5 to 52.5
15 MPa. This shear stress is insufficient to stimulate so many twins (82% twin frequency) in
16 middle SF grains as it is lower than the reported CRSS for tensile twinning (85 MPa) in WE43
17 [49] and other Mg alloys [50, 51]. In addition, the actual twin frequency is expected to be
18 higher than 16% in low SF grains because the twins are too small to be indexed. These profuse
19 twins formed at yielding will continue to grow as well as new twins will be formed with further
20 loading, indicating that strain accommodation by twinning is underestimated in 2D EBSD.

21 **Apart from SF, the effects of grain size on twinning behaviors should also be investigated. It**
22 **is generally accepted that a large grain size is beneficial to the twin formation in Mg alloys [52,**
23 **53] because of the increased boundary area available for twin nucleation. However, the**
24 **dependency of grain size and twinning is not always that straightforward as twinning does not**
25 **occur exclusively in grains with high SF and large size [10]. The dispersions of twinning**

1 activities are attributed to the stress fluctuations at grain boundaries [54]. In this work, all 123
2 twinned grains from layer 21 are tracked in 3D EBSD to investigate the effects of grain size on
3 twinning. As is shown in Fig. 11(a), the twin nucleation activity is indicated by the relationship
4 between parent grain size and twin number within layer 21. It is clear that large grains tend to
5 have more twins than small ones, confirming the dependency of grain size and twin nucleation
6 activity. As is indicated by the dash lines, the average numbers of twins for high, middle and
7 low SF grains within layer 21 are 5.54, 3.36 and 1.83, respectively. The twinning in low SF
8 grains can be attributed to the RSS deviating from the macroscopic stress, as is the case of grain
9 H (Fig. 8). In order to compare the twin growth rate in grains with different grain size, a factor
10 of diameter ratio is introduced:

$$11 \quad r = G.S.t_{max} / G.S.p_{max}$$

12 where G.S.t_{max} and G.S.p_{max} refer to the largest length of a twin along long axis and the
13 maximum diameter of parent grain through all layers. A higher r means the twin consume its
14 parent with a higher growth rate. No obvious dependency of maximum parent grain size and r
15 is observed. In addition, high SF grains show advanced twin growth with an average r of 0.50,
16 while the average r for the middle and low SF grains are 0.29 and 0.28 respectively. Notably,
17 a few grains with unfavorable orientation (SF<0.35) and small grain size (G.S.<50 μm) display
18 obvious twin growth with r value of 0.4. To conclude, twin nucleation is positively correlated
19 to the parent grain size, whereas twin growth is less sensitive to grain size. High SF grains
20 generally shows more and larger twins than the counterparts. However, the twin nucleation and
21 growth can be much enhanced in a few middle and low SF grains owing to the deviation of
22 RSS based on this 3D EBSD investigation.



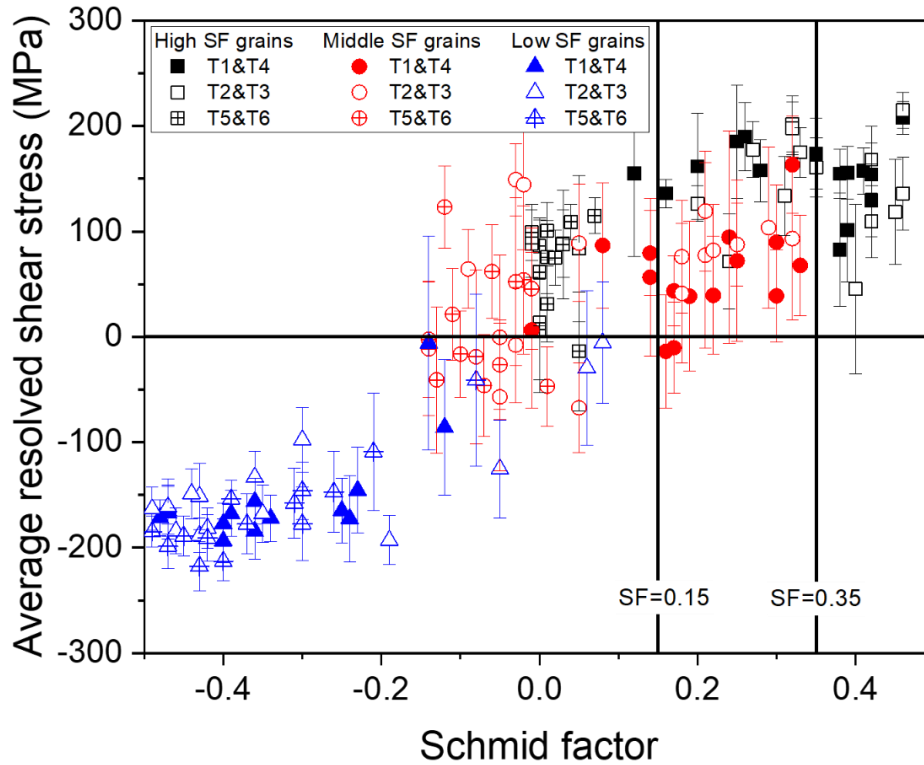
1
2 **Fig. 11 Statistical analysis of all twinned grain from layer 21: (a) parent grain size versus**
3 **twin number within layer 21, (b) maximum parent grain size versus diameter ratio of the twin**
4 **over parent grains across the whole grains in 3D space. The dash lines indicate the average**
5 **values in three grain groups with different SF values.**

6 Twinning is not solely controlled by the SF as twins are found in low and middle SF grains.
7 The RSS is the direct driving force for twin nucleation and growth which depends on the SF
8 and other factors [55]. The emerging technique 3D XRD is capable of measuring the stress in
9 the twinned grain [21, 22]. However, only the grain-average stress instead of local stresses is
10 obtained in 3D XRD while the local stresses can reach a high level due to inhomogeneous
11 deformation. In this work, crystal plasticity modeling is used to simulate the RSS. The links
12 between twinning behaviors, SF, and RSS are established. As is observed in Fig. 5, the RSS is
13 high and homogeneously distributed in high SF grains while in low SF grains it is generally
14 negative, in agreement with Abdolvand's work [56] showing that favorably oriented grains
15 have higher RSS than others. High RSS provides the stress necessary for twins to grow at the
16 twin tip [57], and thus twins in high SF grains show higher growth rates and consume large
17 volume of the matrix. In middle SF grains, the distribution of RSS is heterogeneous and both
18 positive and negative RSS can be observed in the same grain. Twins can only be nucleated and
19 grow in the local areas with positive RSS, leading to a smaller diameter and lower frequency

1 of twins than in high SF grains. This explains why the twin frequency in middle SF grains
2 increases so dramatically from 2D to 3D EBSD. Some small twins which are not shown on a
3 single 2D layer are more likely to be observed by taking more measurements at different depths
4 of the grain in 3D EBSD. The majority of low SF grains shows negative RSS, unfavorable for
5 twinning. Only a few tiny twins are found in grains with high RSS peaks. As a result, EBSD
6 measurements can rarely capture the twinning area. The loss of twins from 2D to 3D EBSD
7 increases with decreasing the twin size.

8 The grain environment plays a critical role in twinning behaviors because the more deformed
9 neighboring grains can exert back stresses on the less deformed grain, stimulating twin
10 nucleation. The effects of neighboring grains are widely reported in 2D EBSD [11, 12, 58, 59].
11 With respects to 3D investigation of the grain environment on twinning, Bieler et al. [22] found
12 slip transfer from soft neighboring grains would stimulate the low SF twin variants. Abdolvand
13 et al. [60] investigated the strong effect of the grain neighbors and found the stress in grains
14 surrounded by hard oriented neighbors decreased without twinning. The current work is the
15 first time, to the knowledge of the authors, to statistically show the difference in grain neighbors
16 between 2D and 3D EBSD, Fig. 9. It confirms that more than half of the grain neighbor
17 information is missing in 2D EBSD. Similar to the study by Paramatmuni [27], a detailed layer
18 by layer analysis of the RSS with different grain neighbors is shown in Fig. 10. Since strain
19 can be easily accommodated by twinning between the favorably oriented grains, the local RSS
20 is low in the adjacent boundary region, as shown in Fig. 10(h). However, the strain
21 accommodation can be hindered by a hard oriented grain on another layer like shown in Fig.
22 10(b). In this case, the RSSs of the former three grains are increased, for example the RSS of
23 grain K is doubled. This definitely promotes twinning activities.

24



1
2 **Fig. 12.** Distribution of the average RSS of grains for different twin variants.

3 Due to the high twinning activity, most of the non-SF twin variants occur in high SF grains. This
4 is because the intense twinning activities in high SF grains can enhance the local stress, for
5 example stress can accumulate at twin-twin intersections. As shown in Fig. 5(a-c), although
6 the RSSs of high SF grains for three twin variant groups are different, they all stay at a high
7 level which could be sufficient to stimulate non-SF twins. The grains from Fig. 5(h) are used
8 to investigate non-SF twin variants and RSS. Fig. 12 shows the average RSS and corresponding
9 SF for different twin variants. It is shown that high SF grains may have middle or low SF values
10 for some twin variants, as is the case for T5&6 in grain E in Fig. 6(e). However, their RSSs
11 mostly stay above 100 MPa. The average RSS of all twin variants in high SF grains is 121 MPa,
12 about three times higher than that of middle SF grains, 44 MPa. In contrast, low SF grains tend
13 to show low or negative RSS for twinning with an average of -150 MPa. As a result, only a
14 few twins are observed in localized area with RSS peak owing to the effect of neighboring
15 grains, Fig. 8.

1 **5. Conclusions**

2 Tensile twinning in Mg alloy was statistically investigated by 3D EBSD and crystal plasticity
3 modeling. This is the first time that the spatial tensile twinning activities in a large bulk Mg
4 sample are investigated. This large dataset will be used for machine learning in future work.

5 Various twinning activities were observed on different layers as well as in different SF grains.

6 This phenomenon was interpreted with respect to the RSS. The main conclusions drawn are:

7 1. Tensile twinning is underestimated as the twin frequency increased by 50% from 25% for
8 2D EBSD to 36% in 3D EBSD characterization. High twinning activities in middle SF grains
9 are already observed at yield stress despite the texture not being favorable for twinning.

10 2. High SF grains are likely to show a high twin frequency and large twins compared to the
11 low SF counterpart. Twinning activity in the same grain varies on different layers.

12 3. The RSS is the driving force for twinning. High SF grains tend to show high and
13 homogeneously distributed RSS which promotes twin nucleation and growth. On the contrary,
14 low SF grains have negative RSS that hinders twin nucleation. As a result, twins are restricted
15 in areas of high local RSS.

16 4. The change of grain environment affects the RSS distribution. The strain cannot be easily
17 accommodated between soft and hard orientated grains which leads to an increase in the RSS,
18 and subsequently enhances the twinning activity.

19 5. Most of the non-SF twin variants are found in high SF grains owing to the high level of RSS.
20

21 **Acknowledgements**

22 This work was supported by the UKRI Future Leaders Fellowship, MR/T019123/2. CL and
23 FR acknowledge financial support by the Deutsche Forschungsgemeinschaft (DFG) within
24 projects A01 and C01 of the Collaborative Research Center (SFB) 1394 “Structural and
25 Chemical Atomic Complexity - from defect phase diagrams to material properties”, project ID

1 409476157. CZ and JD acknowledge the financial supports of the National Natural Science
2 Foundation of China (Grant No. 52071208). The fruitful discussion with Dr Chaitanya
3 Paramatmuni from University of Sheffield is gratefully acknowledged.

4

5 **References**

- 6 [1] T. Obara, H. Yoshinga, S. Morozumi, $\{1122\} \langle 1123 \rangle$ Slip system in magnesium, *Acta*
7 *Metallurgica* 21(7) (1973) 845-853.
- 8 [2] S.R. Agnew, 2 - Deformation mechanisms of magnesium alloys, in: C. Bettles, M. Barnett
9 (Eds.), *Advances in Wrought Magnesium Alloys*, Woodhead Publishing 2012, pp. 63-104.
- 10 [3] T. Al-Samman, G. Gottstein, Room temperature formability of a magnesium AZ31 alloy:
11 Examining the role of texture on the deformation mechanisms, *Materials Science and*
12 *Engineering: A* 488(1) (2008) 406-414.
- 13 [4] M.D. Nave, M.R. Barnett, Microstructures and textures of pure magnesium deformed in
14 plane-strain compression, *Scripta Materialia* 51(9) (2004) 881-885.
- 15 [5] E. Schmid, W. Boas, *Kristallplastizität: mit besonderer Berücksichtigung der Metalle*,
16 Springer-Verlag 1935.
- 17 [6] J.J. Jonas, S. Mu, T. Al-Samman, G. Gottstein, L. Jiang, È. Martin, The role of strain
18 accommodation during the variant selection of primary twins in magnesium, *Acta Materialia*
19 59(5) (2011) 2046-2056.
- 20 [7] Y. Pei, A. Godfrey, J. Jiang, Y.B. Zhang, W. Liu, Q. Liu, Extension twin variant selection
21 during uniaxial compression of a magnesium alloy, *Materials Science and Engineering: A* 550
22 (2012) 138-145.

- 1 [8] B. Zhou, L. Wang, P. Jin, H. Jia, H.J. Roven, X. Zeng, Y. Li, Revealing slip-induced
2 extension twinning behaviors dominated by micro deformation in a magnesium alloy,
3 *International Journal of Plasticity* 128 (2020) 102669.
- 4 [9] Z.-Z. Shi, Y. Zhang, F. Wagner, P.-A. Juan, S. Berbenni, L. Capolungo, J.-S. Lecomte, T.
5 Richeton, On the selection of extension twin variants with low Schmid factors in a deformed
6 Mg alloy, *Acta Materialia* 83 (2015) 17-28.
- 7 [10] I.J. Beyerlein, L. Capolungo, P.E. Marshall, R.J. McCabe, C.N. Tomé, Statistical analyses
8 of deformation twinning in magnesium, *Philosophical Magazine* 90(16) (2010) 2161-2190.
- 9 [11] D. Guan, B. Wynne, J. Gao, Y. Huang, W.M. Rainforth, Basal slip mediated tension twin
10 variant selection in magnesium WE43 alloy, *Acta Materialia* 170 (2019) 1-14.
- 11 [12] C. Guo, R. Xin, C. Ding, B. Song, Q. Liu, Understanding of variant selection and twin
12 patterns in compressed Mg alloy sheets via combined analysis of Schmid factor and strain
13 compatibility factor, *Materials Science and Engineering: A* 609 (2014) 92-101.
- 14 [13] J. Luster, M.A. Morris, Compatibility of deformation in two-phase Ti-Al alloys:
15 Dependence on microstructure and orientation relationships, *Metallurgical and Materials*
16 *Transactions A* 26(7) (1995) 1745-1756.
- 17 [14] L. Wang, Y. Yang, P. Eisenlohr, T.R. Bieler, M.A. Crimp, D.E. Mason, Twin Nucleation
18 by Slip Transfer across Grain Boundaries in Commercial Purity Titanium, *Metallurgical and*
19 *Materials Transactions A* 41(2) (2009) 421.
- 20 [15] K.D. Molodov, T. Al-Samman, D.A. Molodov, G. Gottstein, On the role of anomalous
21 twinning in the plasticity of magnesium, *Acta Materialia* 103 (2016) 711-723.
- 22 [16] M.R. Barnett, Twinning and the ductility of magnesium alloys: Part I: “Tension” twins,
23 *Materials Science and Engineering: A* 464(1) (2007) 1-7.

- 1 [17] D. Hou, T. Liu, D. Shi, H. Chen, H. Chen, Study of twinning behaviors of rolled AZ31
2 magnesium alloy by interrupted in situ compressive tests, *Materials Science and Engineering:*
3 *A* 653 (2016) 108-114.
- 4 [18] S. Yi, J. Bohlen, F. Heinemann, D. Letzig, Mechanical anisotropy and deep drawing
5 behaviour of AZ31 and ZE10 magnesium alloy sheets, *Acta Materialia* 58(2) (2010) 592-605.
- 6 [19] G. Liu, R. Xin, X. Shu, C. Wang, Q. Liu, The mechanism of twinning activation and
7 variant selection in magnesium alloys dominated by slip deformation, *Journal of Alloys and*
8 *Compounds* 687 (2016) 352-359.
- 9 [20] B. Yang, C. Shi, S. Zhang, J. Hu, J. Teng, Y. Cui, Y. Li, A. Chiba, Quasi-in-situ study on
10 {10-12} twinning-detwinning behavior of rolled Mg-Li alloy in two-step compression (RD)-
11 compression (ND) process, *Journal of Magnesium and Alloys* 10(10) (2022) 2775-2787.
- 12 [21] C.C. Aydiner, J.V. Bernier, B. Clausen, U. Lienert, C.N. Tomé, D.W. Brown, Evolution
13 of stress in individual grains and twins in a magnesium alloy aggregate, *Physical Review B*
14 80(2) (2009) 024113.
- 15 [22] T.R. Bieler, L. Wang, A.J. Beaudoin, P. Kenesei, U. Lienert, In Situ Characterization of
16 Twin Nucleation in Pure Ti Using 3D-XRD, *Metallurgical and Materials Transactions A* 45(1)
17 (2014) 109-122.
- 18 [23] K. Louca, H. Abdolvand, C. Mareau, M. Majkut, J. Wright, Formation and annihilation
19 of stressed deformation twins in magnesium, *Communications Materials* 2(1) (2021) 9.
- 20 [24] S. Zaefferer, S.I. Wright, D. Raabe, Three-Dimensional Orientation Microscopy in a
21 Focused Ion Beam–Scanning Electron Microscope: A New Dimension of Microstructure
22 Characterization, *Metallurgical and Materials Transactions A* 39(2) (2008) 374-389.
- 23 [25] A. Fernández, A. Jérusalem, I. Gutiérrez-Urrutia, M.T. Pérez-Prado, Three-dimensional
24 investigation of grain boundary–twin interactions in a Mg AZ31 alloy by electron backscatter
25 diffraction and continuum modeling, *Acta Materialia* 61(20) (2013) 7679-7692.

- 1 [26] N.M. Della Ventura, S. Kalácska, D. Casari, T.E.J. Edwards, A. Sharma, J. Michler, R.
2 Logé, X. Maeder, $\{101^{-2}\}$ twinning mechanism during in situ micro-tensile loading of pure
3 Mg: Role of basal slip and twin-twin interactions, *Materials & Design* 197 (2021) 109206.
- 4 [27] C. Paramatmuni, Y. Guo, P.J. Withers, F.P.E. Dunne, A three-dimensional mechanistic
5 study of the drivers of classical twin nucleation and variant selection in Mg alloys: A mesoscale
6 modelling and experimental study, *International Journal of Plasticity* 143 (2021) 103027.
- 7 [28] T.L. Burnett, R. Kelley, B. Winiarski, L. Contreras, M. Daly, A. Gholinia, M.G. Burke,
8 P.J. Withers, Large volume serial section tomography by Xe Plasma FIB dual beam
9 microscopy, *Ultramicroscopy* 161 (2016) 119-129.
- 10 [29] A. Gholinia, M.E. Curd, E. Bousser, K. Taylor, T. Hosman, S. Coyle, M.H. Shearer, J.
11 Hunt, P.J. Withers, Coupled Broad Ion Beam–Scanning Electron Microscopy (BIB–SEM) for
12 polishing and three dimensional (3D) serial section tomography (SST), *Ultramicroscopy* 214
13 (2020) 112989.
- 14 [30] H. Pirgazi, S. Ghodrati, L.A.I. Kestens, Three-dimensional EBSD characterization of
15 thermo-mechanical fatigue crack morphology in compacted graphite iron, *Materials*
16 *Characterization* 90 (2014) 13-20.
- 17 [31] S. Morito, Y. Edamatsu, K. Ichinotani, T. Ohba, T. Hayashi, Y. Adachi, T. Furuhashi, G.
18 Miyamoto, N. Takayama, Quantitative analysis of three-dimensional morphology of martensite
19 packets and blocks in iron-carbon-manganese steels, *Journal of Alloys and Compounds* 577
20 (2013) S587-S592.
- 21 [32] M. Diehl, D. An, P. Shanthraj, S. Zaefferer, F. Roters, D. Raabe, Crystal plasticity study
22 on stress and strain partitioning in a measured 3D dual phase steel microstructure, *Physical*
23 *Mesomechanics* 20(3) (2017) 311-323.
- 24 [33] D. An, T.A. Griffiths, P. Konijnenberg, S. Mandal, Z. Wang, S. Zaefferer, Correlating the
25 five parameter grain boundary character distribution and the intergranular corrosion behaviour

1 of a stainless steel using 3D orientation microscopy based on mechanical polishing serial
2 sectioning, *Acta Materialia* 156 (2018) 297-309.

3 [34] Y. Liu, P.Z. Tang, M.Y. Gong, R.J. McCabe, J. Wang, C.N. Tomé, Three-dimensional
4 character of the deformation twin in magnesium, *Nature Communications* 10(1) (2019) 3308.

5 [35] M. Gong, G. Liu, J. Wang, L. Capolungo, C.N. Tomé, Atomistic simulations of interaction
6 between basal $\langle a \rangle$ dislocations and three-dimensional twins in magnesium, *Acta Materialia*
7 155 (2018) 187-198.

8 [36] C. Liu, P. Shanthraj, M. Diehl, F. Roters, S. Dong, J. Dong, W. Ding, D. Raabe, An
9 integrated crystal plasticity–phase field model for spatially resolved twin nucleation,
10 propagation, and growth in hexagonal materials, *International Journal of Plasticity* 106 (2018)
11 203-227.

12 [37] C. Liu, P. Shanthraj, J.D. Robson, M. Diehl, S. Dong, J. Dong, W. Ding, D. Raabe, On
13 the interaction of precipitates and tensile twins in magnesium alloys, *Acta Materialia* 178 (2019)
14 146-162.

15 [38] C. Liu, F. Roters, D. Raabe, Finite strain crystal plasticity-phase field modeling of twin,
16 dislocation, and grain boundary interaction in hexagonal materials, *Acta Materialia* 242 (2023)
17 118444.

18 [39] D. Guan, W.M. Rainforth, L. Ma, B. Wynne, J. Gao, Twin recrystallization mechanisms
19 and exceptional contribution to texture evolution during annealing in a magnesium alloy, *Acta*
20 *Materialia* 126 (2017) 132-144.

21 [40] R. Hielscher, H. Schaeben, A novel pole figure inversion method: specification of the
22 MTEX algorithm, *Journal of Applied Crystallography* 41(6) (2008) 1024-1037.

23 [41] F. Roters, M. Diehl, P. Shanthraj, P. Eisenlohr, C. Reuber, S.L. Wong, T. Maiti, A.
24 Ebrahimi, T. Hochrainer, H.O. Fabritius, S. Nikolov, M. Friák, N. Fujita, N. Grilli, K.G.F.
25 Janssens, N. Jia, P.J.J. Kok, D. Ma, F. Meier, E. Werner, M. Stricker, D. Weygand, D. Raabe,

1 DAMASK – The Düsseldorf Advanced Material Simulation Kit for modeling multi-physics
2 crystal plasticity, thermal, and damage phenomena from the single crystal up to the component
3 scale, *Computational Materials Science* 158 (2019) 420-478.

4 [42] E. Orowan, Zur Kristallplastizität. I, *Zeitschrift für Physik* 89(9) (1934) 605-613.

5 [43] L. Jin, J. Dong, J. Sun, A.A. Luo, In-situ investigation on the microstructure evolution and
6 plasticity of two magnesium alloys during three-point bending, *International Journal of*
7 *Plasticity* 72 (2015) 218-232.

8 [44] X. Zeng, P. Minárik, P. Dobroň, D. Letzig, K.U. Kainer, S. Yi, Role of deformation
9 mechanisms and grain growth in microstructure evolution during recrystallization of Mg-Nd
10 based alloys, *Scripta Materialia* 166 (2019) 53-57.

11 [45] C. Paramatmuni, Z. Zheng, W.M. Rainforth, F.P.E. Dunne, Twin nucleation and variant
12 selection in Mg alloys: An integrated crystal plasticity modelling and experimental approach,
13 *International Journal of Plasticity* 135 (2020) 102778.

14 [46] B.C. Wonsiewicz, W.A. Backofen, Plasticity of Magnesium Crystals, *Trans Met Soc*
15 *AIME* 239(9) (1967) 1422-1433.

16 [47] S.R. Agnew, M.H. Yoo, C.N. Tomé, Application of texture simulation to understanding
17 mechanical behavior of Mg and solid solution alloys containing Li or Y, *Acta Materialia* 49(20)
18 (2001) 4277-4289.

19 [48] D. Zhao, J. Dong, K.Y. Xie, Effect of local twin Schmid factor on the tension twinning
20 activities in a highly textured Mg–3Al–1Zn alloy under different strain paths, *MRS*
21 *Communications* 12(2) (2022) 217-222.

22 [49] S.R. Agnew, R.P. Mulay, F.J. Polesak, C.A. Calhoun, J.J. Bhattacharyya, B. Clausen, In
23 situ neutron diffraction and polycrystal plasticity modeling of a Mg–Y–Nd–Zr alloy: Effects
24 of precipitation on individual deformation mechanisms, *Acta Materialia* 61(10) (2013) 3769-
25 3780.

- 1 [50] M.A. Gharghouri, G.C. Weatherly, J.D. Embury, The interaction of twins and precipitates
2 in a Mg-7.7 at.% Al alloy, *Philosophical Magazine A* 78(5) (1998) 1137-1149.
- 3 [51] M.R. Barnett, Z. Keshavarz, X. Ma, A semianalytical Sachs model for the flow stress of a
4 magnesium alloy, *Metallurgical and Materials Transactions A* 37(7) (2006) 2283-2293.
- 5 [52] M.R. Barnett, Z. Keshavarz, A.G. Beer, D. Atwell, Influence of grain size on the
6 compressive deformation of wrought Mg-3Al-1Zn, *Acta Materialia* 52(17) (2004) 5093-5103.
- 7 [53] I.J. Beyerlein, C.N. Tomé, A probabilistic twin nucleation model for HCP polycrystalline
8 metals, *Proceedings of the Royal Society A: Mathematical, Physical and Engineering Sciences*
9 466(2121) (2010) 2517-2544.
- 10 [54] I.J. Beyerlein, R.J. McCabe, C.N. Tomé, Effect of microstructure on the nucleation of
11 deformation twins in polycrystalline high-purity magnesium: A multi-scale modeling study,
12 *Journal of the Mechanics and Physics of Solids* 59(5) (2011) 988-1003.
- 13 [55] H. Abdolvand, M. Majkut, J. Oddershede, S. Schmidt, U. Lienert, B.J. Diak, P.J. Withers,
14 M.R. Daymond, On the deformation twinning of Mg AZ31B: A three-dimensional synchrotron
15 X-ray diffraction experiment and crystal plasticity finite element model, *International Journal*
16 *of Plasticity* 70 (2015) 77-97.
- 17 [56] H. Abdolvand, K. Louca, C. Mareau, M. Majkut, J. Wright, On the nucleation of
18 deformation twins at the early stages of plasticity, *Acta Materialia* 196 (2020) 733-746.
- 19 [57] H. Abdolvand, A.J. Wilkinson, Assessment of residual stress fields at deformation twin
20 tips and the surrounding environments, *Acta Materialia* 105 (2016) 219-231.
- 21 [58] X. Liu, J.J. Jonas, B.W. Zhu, T. Wang, L.X. Li, Variant selection of primary extension
22 twins in AZ31 magnesium deformed at 400°C, *Materials Science and Engineering: A* 649
23 (2016) 461-467.

1 [59] S. Mu, T. Al-Samman, V. Mohles, G. Gottstein, Cluster type grain interaction model
2 including twinning for texture prediction: Application to magnesium alloys, *Acta Materialia*
3 59(18) (2011) 6938-6948.

4 [60] H. Abdolvand, J. Wright, A.J. Wilkinson, Strong grain neighbour effects in polycrystals,
5 *Nature Communications* 9(1) (2018) 171.

6

7