

# Biodiversity, biogeography, and connectivity of polychaetes in the world's largest marine minerals exploration frontier

Eva C. D. Stewart<sup>1,2</sup>  | Guadalupe Bribiesca-Contreras<sup>1</sup>  | Sergi Taboada<sup>1,3,4,5</sup>  |  
 Helena Wiklund<sup>1,6</sup>  | Ascensão Ravara<sup>7</sup>  | Ellen Pape<sup>8</sup>  | Bart De Smet<sup>8,9</sup> |  
 Lenka Neal<sup>1</sup> | Marina R. Cunha<sup>10</sup>  | Daniel O. B. Jones<sup>11</sup>  | Craig R. Smith<sup>12</sup>  |  
 Adrian G. Glover<sup>1</sup>  | Thomas G. Dahlgren<sup>6,13</sup> 

<sup>1</sup>Life Sciences Department, Natural History Museum, London, UK

<sup>2</sup>School of Ocean and Earth Sciences, University of Southampton, Southampton, UK

<sup>3</sup>Departamento de Biodiversidad y Biología Evolutiva, Museo Nacional de Ciencias Naturales, Madrid, Spain

<sup>4</sup>Departamento de Ciencias de la Vida, Universidad de Alcalá de Henares, Madrid, Spain

<sup>5</sup>Departamento de Biodiversidad, Ecología y Evolución, Universidad Complutense de Madrid, Madrid, Spain

<sup>6</sup>Department of Marine Sciences, University of Gothenburg and Gothenburg Global Biodiversity Centre, Gothenburg, Sweden

<sup>7</sup>Centro de Estudos do Ambiente e do Mar (CESAM), Departamento de Biologia, Universidade de Aveiro, Aveiro, Portugal

<sup>8</sup>Marine Biology Research Group, Ghent University, Ghent, Belgium

<sup>9</sup>Flanders Marine Institute (VLIZ), Ostend, Belgium

<sup>10</sup>Departamento de Biologia, Universidade de Aveiro, Aveiro, Portugal

<sup>11</sup>National Oceanography Centre, Southampton, UK

<sup>12</sup>Department of Oceanography, University of Hawai'i at Mānoa, Hawaii, Honolulu, USA

<sup>13</sup>NORCE Norwegian Research Centre, Bergen, Norway

## Correspondence

Eva C. D. Stewart, Life Sciences  
 Department, Natural History Museum,  
 London, UK.  
 Email: [e.stewart@nhm.ac.uk](mailto:e.stewart@nhm.ac.uk)

## Funding information

Natural Environment Research  
 Council, Grant/Award Number: NE/  
 T002913/1; Norges Forskningsråd,  
 Grant/Award Number: #290931; Svenska  
 Forskningsrådet Formas, Grant/Award  
 Number: #210-2014-1737

Editor: Alana Grech

## Abstract

**Aim:** The abyssal Clarion-Clipperton Zone (CCZ), Pacific Ocean, is an area of commercial importance owing to the growing interest in mining high-grade polymetallic nodules at the seafloor for battery metals. Research into the spatial patterns of faunal diversity, composition, and population connectivity is needed to better understand the ecological impacts of potential resource extraction. Here, a DNA taxonomy approach is used to investigate regional-scale patterns of taxonomic and phylogenetic alpha and beta diversity, and genetic connectivity, of the dominant macrofaunal group (annelids) across a 6 million km<sup>2</sup> region of the abyssal seafloor.

**Location:** The abyssal seafloor (3932–5055 m depth) of the Clarion-Clipperton Zone, equatorial Pacific Ocean.

**Methods:** We used a combination of new and published barcode data to study 1866 polychaete specimens using molecular species delimitation. Both phylogenetic and taxonomic alpha and beta diversity metrics were used to analyse spatial patterns of

This is an open access article under the terms of the [Creative Commons Attribution](https://creativecommons.org/licenses/by/4.0/) License, which permits use, distribution and reproduction in any medium, provided the original work is properly cited.

© 2023 The Authors. *Diversity and Distributions* published by John Wiley & Sons Ltd.

biodiversity. Connectivity analyses were based on haplotype distributions for a subset of the studied taxa.

**Results:** DNA taxonomy identified 291–314 polychaete species from the COI and 16S datasets respectively. Taxonomic and phylogenetic beta diversity between sites were relatively high and mostly explained by lineage turnover. Over half of pairwise comparisons were more phylogenetically distinct than expected based on their taxonomic diversity. Connectivity analyses in abundant, broadly distributed taxa suggest an absence of genetic structuring driven by geographical location.

**Main Conclusions:** Species diversity in abyssal Pacific polychaetes is high relative to other deep-sea regions. Results suggest that environmental filtering, where the environment selects against certain species, may play a significant role in regulating spatial patterns of biodiversity in the CCZ. A core group of widespread species have diverse haplotypes but are well connected over broad distances. Our data suggest that the high environmental and faunal heterogeneity of the CCZ should be considered in future policy decisions.

#### KEYWORDS

abyssal, beta diversity, biodiversity, biogeography, connectivity, deep-sea mining, phylogeny, polychaeta, polymetallic nodules, population genetics

## 1 | INTRODUCTION

In the abyssal depths (3000–6000 m) of the central and eastern Pacific Ocean lies the world's largest exploration frontier for marine minerals, the Clarion-Clipperton Zone (CCZ). The CCZ is a 6 million km<sup>2</sup> region between the Clarion and Clipperton Fracture Zones, characterised by areas with high densities of polymetallic nodules that are rich in a range of industrially important metals, such as the battery metals cobalt and nickel. As of 2022, there are 17 active exploration contracts for marine minerals in the CCZ, regulated by the International Seabed Authority (ISA). The ISA has also approved 13 Areas of Particular Environmental Interest (APEIs) as part of the Regional Environmental Management Plan (REMP) (ISA, 2021; Lodge et al., 2014).

Commercial-scale nodule mining is predicted to have significant impacts on abyssal benthic ecosystems (Jones et al., 2019; Washburn et al., 2019). Direct impacts include the removal and destruction of biota with associated habitat loss (Jones et al., 2017), while indirect impacts include modification of the water column and sediment through the generation of sediment plumes (Gillard et al., 2019; Smith et al., 2020). It has been known for some time that biodiversity at the abyssal seafloor is surprisingly high, given the low food availability, compared to other sedimented marine habitats (Hessler & Jumars, 1974). Previous local and regional studies of the dominant polychaete fraction of the abyssal Pacific macrofauna (Glover et al., 2002) supported the idea that species diversity in the Pacific was higher than other regions, but a lack of genetic data has precluded accurate studies of regional diversity and connectivity, essential for the further development of the ISA REMP (ISA, 2021).

Despite the growing importance of the CCZ, only a limited number of studies have attempted to place the biodiversity of the abyssal

Pacific into a broader global context (Christodoulou et al., 2019; Cordier et al., 2022; Glover et al., 2002; Lejzerowicz et al., 2021). A recent analysis of polychaete and crustacean diversity from published quantitative studies showed wide variation in both abundance and diversity, likely driven by sampling biases as well as environmental variables (Washburn, Menot, et al., 2021). A major issue is the lack of consistent taxonomies, created by the problem that most of the species are undescribed, and there are no available regional field guides or identification keys (Glover et al., 2018). The ability to rapidly obtain DNA barcodes from the studied specimens and make the data available in open repositories (Glover et al., 2016) is now enabling these comparisons to be made, whilst open taxonomic works (e.g., Wiklund et al., 2017, 2019) should eventually enable morphological field guides to be created.

Alongside this improvement in taxonomic methods, it is now also becoming possible to study other facets of abyssal diversity, such as beta diversity (Bonifácio et al., 2020; Brix et al., 2020; Christodoulou et al., 2020) and phylogenetic diversity (Bonifácio, Neal, & Menot, 2021; Christodoulou et al., 2019; Macheriotou et al., 2020). Beta diversity, as it was originally defined, is species turnover, typically over an environmental or spatial gradient (Whittaker, 1972). It is now commonly apportioned into true species turnover (replacement of species) and nestedness (in which assemblages represent a subset of a broader species pool) (Baselga, 2010). These new analyses are providing data on regional shifts in species composition and lineage turnover, critical for setting conservation priorities, and to evaluate ecological and evolutionary dynamics of communities in an ecosystem where the mechanisms supporting high diversity are still poorly understood (McClain & Schlacher, 2015).

The traditional hypothesis for abyssal sites is that there is a broadly distributed regional species pool of 'cosmopolitan' taxa for which turnover is low or driven by local-scale niche partitioning, together with a very long list of extremely rare taxa that appear to have high turnover with distance (Glover et al., 2002; McClain, 2021). Increased use of genetic barcoding has, however, shown many of these 'cosmopolitan' species to actually be cryptic species complexes (e.g., Havermans et al., 2013). This traditional biogeographic hypothesis has been shown to be the case in the CCZ, with geographic distance driving species turnover in polychaetes (at least in rare species), with nestedness remaining low (Bonifácio et al., 2020). Recent molecular work in the CCZ has also revealed high levels of phylogenetic diversity in abyssal brittle-stars (Christodoulou et al., 2019), and high phylogenetic rarity in nematode assemblages (Macheriotou et al., 2020).

Population genetic studies are likewise key to providing insights into the drivers of biodiversity patterns in the abyss. There are only three original studies of soft-sediment dwelling macrofaunal connectivity in deep-sea systems, which all suggest species can range >1000km in some habitats, but also show high genetic variability (relative to shallow-water examples) (Bober et al., 2018; Etter et al., 2011; Janssen et al., 2019). In the CCZ, there is no evidence that this genetic heterogeneity is driven by physical barriers to gene flow (Janssen et al., 2019). For a common nodule-dwelling demosponge species in the eastern CCZ, evidence suggests that observed genetic connectivity might be explained by predominant oceanographic currents (Taboada et al., 2018).

In this paper, we present and analyse the largest dataset yet accrued for annelid polychaetes across the CCZ, all identified through integrative DNA taxonomy based on species hypotheses linked to openly databased and archived reference material that is available in an associated open-access taxonomic data paper (Wiklund et al., *in press*). We focus our investigations on the three following areas: (1) baseline levels of biodiversity in the seafloor communities in a regional context (to measure and evaluate potential future impacts); (2) regional biogeographic patterns (critical for the determination of potential protected areas); and (3) population connectivity between regions (needed to determine the resilience and recovery of the system post-impact). As our analyses provide new information in all three areas, they will be essential for the planning of conservation strategies in this vast and commercially strategic region.

## 2 | METHODS

### 2.1 | Study areas

All study areas are located within the Clarion-Clipperton Zone (CCZ) in the northeast equatorial Pacific Ocean, at depths from 3932 to 5055 m (Figure 1). The CCZ displays gradients in environmental conditions, including surface primary productivity and seafloor sediment characteristics (Washburn, Jones, et al., 2021), with changes occurring across an east-west and north-south axis. Mining exploration contracts from the ISA, as well as reserve areas and areas protected

from mining, extend from 115°W to approximately 158°W, and from 22°N to 2.5°N. The exploration contract areas considered in this study were granted by the ISA to: the Federal Institute for Geosciences and Natural Resources of Germany (BGR, Germany); InterOceanMetal Joint Organisation (IOM, a country conglomerate involving Cuba, Bulgaria, Poland, the Russian Federation, Slovakia, and the Czech Republic); Institut Français de Recherche pour l'Exploitation de la Mer (IFREMER, France); UK Seabed Resources Ltd (UK-SRL, United Kingdom); Global Sea Mineral Resources NV (GSR, Belgium); and Ocean Mineral Singapore (OMS, Singapore). The ISA has also designated 13 APEIs as part of the REMP for the CCZ, of which two sites in APEI-6 were considered for diversity analyses. One specimen which was opportunistically sampled from APEI-7 was included in connectivity analyses (Figure 1).

### 2.2 | At-sea sampling

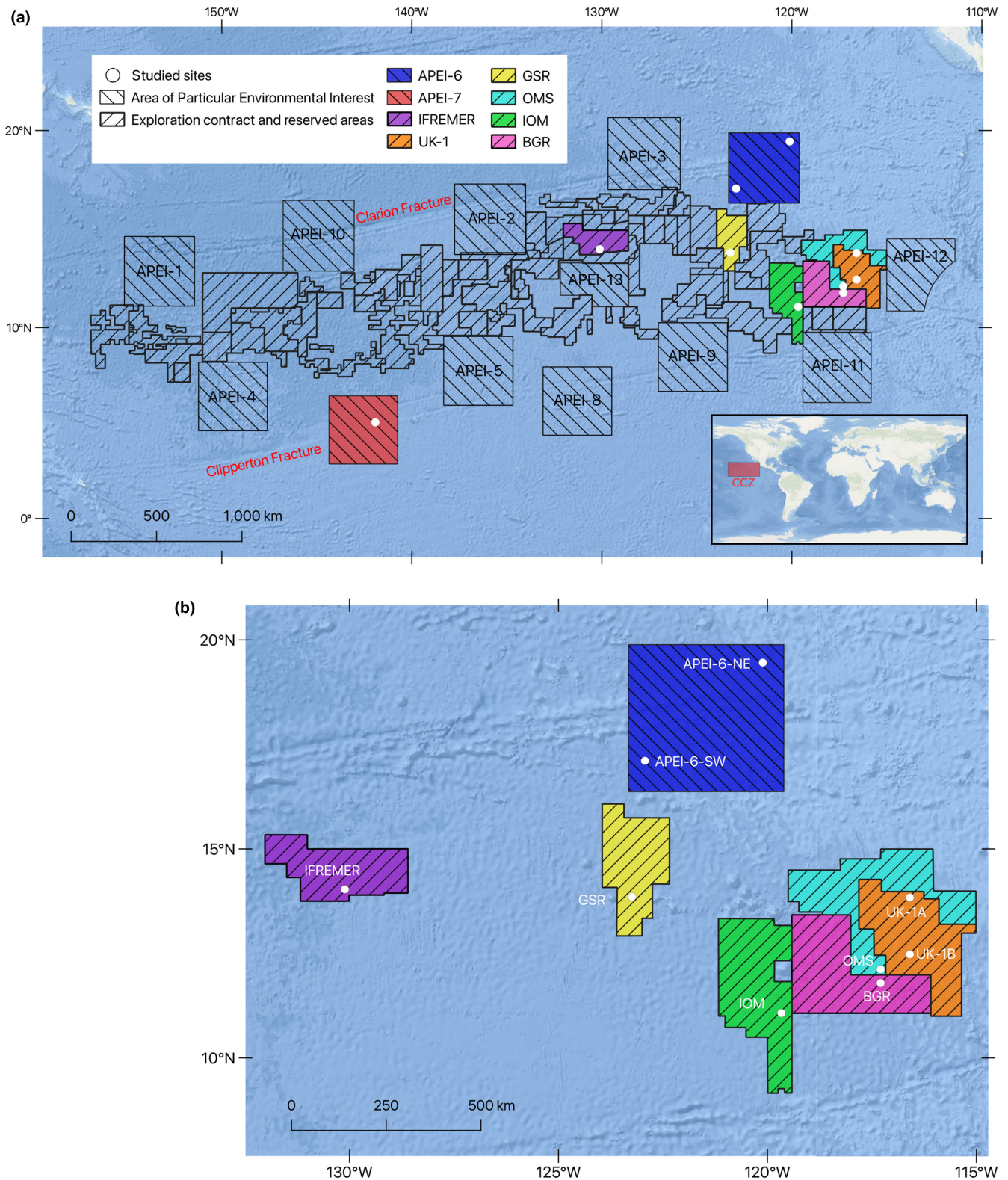
Complete description of the DNA taxonomy pipeline used in the collection of samples new to this study is provided in Glover et al. (2016). Abyssal benthic specimens were collected from UK-1, GSR, OMS, and APEI-6 using a variety of oceanographic sampling gear including box cores, epibenthic sledges (EBS), remotely operated vehicles (ROV), and multi-cores. Live-sorted specimens were stored in individual microtube vials containing an aqueous solution of 80% non-denatured ethanol, numbered, and kept chilled until return to the Natural History Museum, London, UK.

### 2.3 | Sequencing and phylogenetics

Details of DNA extraction, amplification, sequence alignment, and phylogenetic methods can be found in Appendix S1. Sequences of the mitochondrial 16S rRNA (16S) and cytochrome *c* oxidase subunit I (COI) genetic markers were supplemented with sequences from Wiklund et al. (2019), Drennan et al. (2021), Wiklund et al. (*in press*), Neal, Wiklund, Rabone, et al. (2022), Neal, Wiklund, Gunton, et al. (2022), Janssen et al. (2015), Janssen et al. (2019), Bonifácio et al. (2020), Bonifácio, Neal, and Menot (2021), and Bonifácio, Neal, Omnes, and Menot (2021) available through NCBI GenBank (Altschul et al., 1990) (<https://www.ncbi.nlm.nih.gov/genbank/>) and BOLD (<https://www.boldsystems.org>). Full 16S and COI sequence alignments used in analyses can be found on Dryad (Stewart et al., 2023). Genetic data from a total of 1866 specimens were included in diversity analyses, with 1177 specimens having COI sequences, and 1101 specimens having 16S sequences. Specimen IDs, location, and accession numbers can be found in Appendix S2.

### 2.4 | Species delimitation

Molecular species delimitation was performed on the 16S and COI datasets separately. The distance-based molecular species



**FIGURE 1** (a) Map of the nodules exploration contract areas, reserved areas, and Areas of Particular Environmental Interest (APEI) in the Clarion-Clipperton Zone (CCZ), central Pacific Ocean, showing the areas considered in this study (in colour). APEI-7 was only considered for connectivity analyses. (b) Enlarged map indicating the sites considered in diversity analyses. Shapefiles are courtesy of the International Seabed Authority, Kingston, Jamaica.

delimitation methods, automatic barcode gap discovery (ABGD; Puillandre et al., 2012) and CD-HIT-Suite (Huang et al., 2010), were used to separate specimens into molecular operational taxonomic units (MOTUs, hereby referred to as species). Distance-based approaches work on the assumption of a nucleotide distance threshold, below which specimens are considered conspecific and above which they are considered to belong to different species. These methods detect the point at which this 'barcode-gap' occurs and sort sequences into putative species based on this threshold. ABGD analyses were undertaken on the web interface (<https://bioinfo.mnhn.fr/abi/public/abgd/abgdweb.html>) using the Kimura-2-parameter model for both COI and 16S datasets. A range of relative gap width values (0.5–1.5) were tested and a value of 0.8 was used for analyses. CD-HIT-Suite analyses were undertaken on the web interface ([http://weizhong-lab.ucsd.edu/cdhit\\_suite/cgi-bin/index.cgi?cmd=cd-hit-est](http://weizhong-lab.ucsd.edu/cdhit_suite/cgi-bin/index.cgi?cmd=cd-hit-est)), using a pre-defined sequence similarity threshold of 97% (Janssen et al., 2019). The results of delimitations were compared against morphological species identifications of specimens new to this study to check for consensus, and as the ABGD results were most congruous with morphological delimitations these delimitation results were used for subsequent analyses. Feeding guilds were determined at a family level (from sequence ID) following Jumars et al. (2015).

## 2.5 | Diversity analyses

### 2.5.1 | Species diversity

All data analyses were conducted using R v.4.0.2 (R Core Team, 2020), on both COI and 16S datasets separately. To compare diversity between areas, rarefaction curves were computed based on the total number of individuals and the total number of species from each sampled area. Based on these data, the expected number of species was calculated for 20 individuals (ES(20)) from each area, and 150 individuals (ES(150)) for all areas combined. Standard Shannon ( $H'$ ) and Simpson ( $D$ ) diversity indices were also computed. Non-parametric species richness estimators were calculated for each area to represent regional diversity (Basualdo, 2017), using the package 'SpadeR' (Chao et al., 2016). While rarefaction compares observed richness among samples, richness estimators evaluate the total richness of a community (Shen et al., 2003). Abundance-based estimators included Chao1 (Chao, 1984), and Chao1-bc (Chao1 bias-corrected) (Chiu et al., 2014). Incidence-based estimators included first- and second-order Jackknife (Burnham & Overton, 1979).

### 2.5.2 | Beta diversity and phylogenetic diversity

The New Normalised Expected Species Shared (NNESS) (Gallagher, 1996) index was calculated and used to perform a

distance decay analysis. Distance decay looks for a correlation between taxonomic similarities and geographic distance among pairs of areas. NNESS values were computed from the probabilities of species occurrences in random draws of  $m$  individuals, using the package 'ness' (Menot, 2019). Low values of  $m$  give high weight to dominant species, whereas high values of  $m$  give a higher weighting to rare species. The ideal  $m$  value is the one providing the highest Kendall correlation between the similarity matrixes for  $m = 1$  and  $m = m$  max. Significance was tested using non-parametric Mantel tests between NNESS and geographic distance matrices, using Spearman Rank correlation coefficients and 999 permutations for obtaining  $p$ -values.

Taxonomic (species) beta diversity (TBD) was quantified for all pairs of areas using the Jaccard ( $\beta_{jac}$ ) dissimilarity index from presence-only data. This index was decomposed into its components: turnover ( $\beta_{jtu}$ ; replacement of species), and nestedness ( $\beta_{jne}$ ; assemblages with few species represent subsets of richer sites) (Baselga, 2010). To account for the phylogenetic relatedness between species, phylogenetic beta diversity (PBD) was also computed for all pairs of areas from two ultrametric Bayesian trees produced utilising the separate 16S and COI datasets, using the unweighted UniFrac metric of community dissimilarity (UF; derived from the Jaccard dissimilarity index) (Lozupone & Knight, 2005). Unifrac distance was calculated for both phylogenetic trees, which measures the phylogenetic distance between sets of taxa in terms of the overall branch length unique to each sample. This metric was also decomposed into its turnover ( $UF_{tu}$ ) and nestedness ( $UF_{ne}$ ) components. It is worth noting that nestedness in this framework is not an absolute measure of how nested two assemblages are, but rather a measure of the dissimilarity caused by richness gradients among nested assemblages (Baselga, 2010; Leprieur et al., 2011).

The turnover fraction of both metrics ( $\beta_{jtu}$  and  $UF_{tu}$ ) was used to perform hierarchical clustering and non-metric multidimensional scaling (nMDS), with clustering methods as in Bribiesca-Contreras et al. (2019). A null model approach was used to test whether PBD was explained by variations in TBD alone. The evolutionary relationships between samples were randomised 1000 times by rearranging the tree tip labels while keeping species diversity constant. Standardized effect size (SES) was computed as in Leprieur et al. (2012), which indicates if communities are more ( $\geq 1.96$ ) or less ( $\leq -1.96$ ) phylogenetically diverse than expected based on TBD alone. The following R packages were used for beta diversity analyses: 'betapart' (Baselga & Orme, 2012), 'picante' (Kembel et al., 2010), 'recluster' (Dapporto et al., 2013), 'ape' (Paradis & Schliep, 2019), 'vegan' (Oksanen et al., 2013).

Non-parametric Mantel tests between input distance matrices were based on Spearman Rank correlation coefficients and 999 permutations for obtaining  $p$ -values. Pairwise correlations were tested between (a) UF and geographic distance (great circle distance) between areas, (b)  $UF_{tu}$  and geographic distance between areas, and (c)  $UF_{ne}$  and geographic distance between areas.

## 2.6 | Biogeographic analyses

Since sampling effort was different between areas, species abundance data was 'chord' transformed to explore differences in relative abundance (Legendre & Borcard, 2018). After transformation, non-metric multi-dimensional scaling (nMDS) ordination was performed with Bray-Curtis distance (Bray & Curtis, 1957). An UpSet plot was used to show the distribution of unique shared species across all sampled areas (Lex et al., 2014).

## 2.7 | Connectivity analyses

To investigate genetic diversity and connectivity patterns across the eastern CCZ and adjacent areas, relatively common species across the different localities were chosen (Appendix S3). The six species selected for connectivity analyses were: *Bathylgycinde cf. profunda* (Hartman & Fauchald, 1971), *Lumbrinerides cf. laubieri* Miura, 1980, *Neanthes goodayi* Drennan et al., 2021, *Nicomache cf. benthaliana* McIntosh, 1885, *Ophelina martinezarbizui* Wiklund et al., 2019, and *Paralacydonia cf. weberi* Horst, 1923. These annelid species represent at least two different life history strategies with *B. cf. profunda* and *O. martinezarbizui* possessing relatively large eggs indicating brooding (Böggemann, 2009; Wiklund et al., 2019), while species of the genus *Paralacydonia* have small eggs typical for broadcast spawners (Rouse & Pleijel, 2001). For these species, there were at least 10 sequences available for each of the 16S and COI genetic markers, which were analysed separately.

For the six species and the two sets of markers, haplotype number ( $h$ ), haplotype diversity ( $H_d$ ), nucleotide diversity ( $\pi$ ), and number of segregating sites ( $S$ ), were estimated using the R packages 'pegas' (Paradis, 2010) and 'ape' (Paradis & Schliep, 2019) (R script can be found in Stewart et al., 2023). Mismatch distribution plots, indicating the frequencies of pairwise distances, were generated for both 16S and COI for each of the six species using the 'pegas' function 'MMD'. In order to visualise genetic connectivity patterns TCS haplotype networks (Clement et al., 2002) were built using popART v1.7 (Leigh & Bryant, 2015).

## 3 | RESULTS

### 3.1 | Alpha diversity

A total of 1866 samples were included in the diversity analyses, with 1101 samples represented by 16S data and 1177 samples represented by COI data. ABGD results were most congruous with morphological delimitations and so these delimitation results were used for subsequent analyses. Based on this species delimitation, the 16S dataset contained 314 species, while the COI dataset contained 291 species. 51% of the 16S species were represented by a single specimen (singletons), and 52% of the COI species were singletons. Both sampling and sequencing were uneven between regions, most

notably in the BGR area from which there were 459 COI sequences, but only 96 16S sequences (Table 1). Non-parametric extrapolation analyses (Chao and Jackknife estimators) predicted a total number of species across all areas between  $473.9 \pm 17.9$  and  $580.7 \pm 30.9$  for the 16S dataset, and between  $441.9 \pm 17.4$  and  $538.8 \pm 30.1$  for the COI dataset (Table 1). For both datasets, the highest number of extrapolated species was predicted in UK-1B (16S: 201–277, COI: 155–305). Both IFREMER and BGR had notably lower estimated species numbers in the 16S dataset than in the COI dataset (Table 1).

Species rarefaction curves, based on number of individuals from each area, did not reach asymptotes at the local scale for either of the datasets (Figure 2). Most areas exhibited a similar rate of species increase with number of individuals sampled. However, BGR and IFREMER showed lower numbers of species for the same number of individuals compared to other areas. From a random draw of 20 individuals, APEI-6-SW had the highest number of expected species in the 16S data (Figure 2a; Table 1), while IFREMER had the highest expected number in the COI data (Figure 2b; Table 1). Comparative expected species (ES(150)) values are presented in Table 2.

UpSet plots of each dataset showed that no species were shared across all areas (Figure 3). Overall, in the 16S dataset, 183 species (58.2%) were unique to a single area (Figure 3a). This number was proportionally larger for the COI dataset, with 179 (61.5%) of species being unique to a single area (Figure 3b).

Samples from both datasets belonged to 41 families (Figure 4). The most abundant families within the 16S dataset were Spionidae (16.9%), Polynoidae (14.8%), and Lumbrineridae (6.5%). Five of the observed families were represented by a single specimen. Within the COI dataset the most abundant families were Paralacydoniidae (14.5%), Sigalionidae (11.5%), and Polynoidae (9.5%). Two of the observed families were represented by a single specimen. The relative contributions of trophic guilds also varied between areas and the two datasets (Figure 4b,d). For both datasets, suspension feeders represented the lowest contribution in each area, and were not identified in samples from GSR or APEI-6-NE. Within the 16S data, the relative contribution of both surface and sub-surface deposit feeders at BGR was much higher than in the COI dataset (Figure 4b,d).

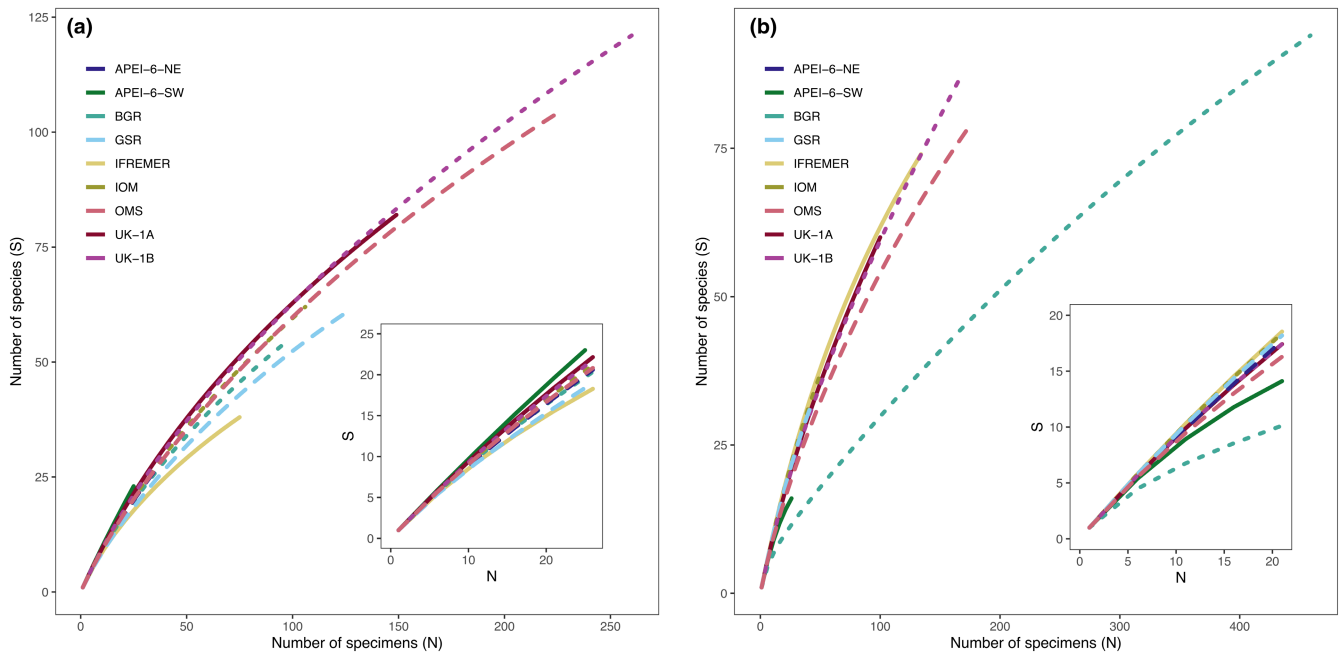
### 3.2 | Taxonomic and phylogenetic beta diversity

Both 16S and COI datasets showed CCZ polychaete communities to be characterised by high levels of taxonomic beta diversity (Appendix S4). Taxonomic turnover between regions explained 59% of the  $UF_{tu}$  variation for the 16S dataset, while taxonomic turnover explained 83% of the  $UF_{tu}$  variation in the COI dataset. However, within the COI dataset, even when the turnover of species was complete ( $\beta_{tu} = 1$ ),  $UF_{tu}$  still discriminated between regions with different degrees of phylogenetic dissimilarity (Appendix S1, Figure 1). When there was zero nestedness in the species composition between regions ( $\beta_{jne} = 0$ ), the regions could be phylogenetically nested (Appendix S1, Figure 1).

TABLE 1 Observed and estimated species richness ( $\pm$ SE) for each individual sampled area in the Clarion Clipperton Zone, and for the areas as a whole (Total).

Area	n	S <sub>obs</sub>	Unique species	% Unique	Shannon (H')	Simpsons (1-D)	ES(20)	Chao1	Chao1-bc	1st order Jackknife	2nd order Jackknife
16S											
APEI-6-NE	37	28	16	57.1	3.17	0.95	16.6 $\pm$ 1.3	92.3 $\pm$ 42.7	77.2 $\pm$ 29.6	50.4 $\pm$ 6.7	68.5 $\pm$ 11.3
APEI-6-SW	26	23	13	56.5	3.03	0.95	18.1 $\pm$ 0.8	235 $\pm$ 231.8	124 $\pm$ 68.5	43.2 $\pm$ 6.3	61.7 $\pm$ 10.7
BGR	96	54	14	25.9	3.69	0.96	16.4 $\pm$ 1.6	118.1 $\pm$ 30.5	110.7 $\pm$ 26.3	89.6 $\pm$ 8.4	115.2 $\pm$ 14.5
GSR	126	61	14	23	3.62	0.94	15.3 $\pm$ 1.7	119 $\pm$ 25.7	113.5 $\pm$ 22.9	99.7 $\pm$ 8.8	125.4 $\pm$ 15.1
IFREMER	75	38	16	42.1	3.32	0.95	15 $\pm$ 1.6	78.6 $\pm$ 23.5	72 $\pm$ 19	61.7 $\pm$ 6.9	78.3 $\pm$ 11.8
IOM	106	62	16	25.8	3.85	0.97	16.9 $\pm$ 1.5	163.8 $\pm$ 47.1	151.4 $\pm$ 39.6	104.6 $\pm$ 9.2	138 $\pm$ 15.9
OMS	228	105	26	24.8	4.16	0.97	16.7 $\pm$ 1.6	208.3 $\pm$ 35.5	202.1 $\pm$ 33	170.7 $\pm$ 11.5	215.4 $\pm$ 19.8
UK-1A	149	82	29	35.4	4.13	0.98	17.6 $\pm$ 1.4	181.7 $\pm$ 39.5	173.3 $\pm$ 35.4	134.6 $\pm$ 10.2	173.2 $\pm$ 17.8
UK-1B	261	122	39	32	4.36	0.98	17.4 $\pm$ 1.5	277.4 $\pm$ 50.9	268.2 $\pm$ 47	200.7 $\pm$ 12.5	259.3 $\pm$ 21.7
Total	1101	314	-	-	5.07	0.99	18.2 $\pm$ 1.3	555.3 $\pm$ 52.9	549.3 $\pm$ 51.3	473.9 $\pm$ 17.9	580.7 $\pm$ 30.9
COI											
APEI-6-NE	24	20	13	65	2.89	0.93	17 $\pm$ 0.8	175.3 $\pm$ 172.1	93.3 $\pm$ 51.8	37.3 $\pm$ 5.8	52.8 $\pm$ 9.9
APEI-6-SW	26	16	6	37.5	2.65	0.92	13.7 $\pm$ 1	23.8 $\pm$ 6.9	21.8 $\pm$ 5.2	24.7 $\pm$ 4.1	28.5 $\pm$ 7
BGR	459	94	31	33	2.85	0.87	9.8 $\pm$ 1.9	207.5 $\pm$ 40.4	199.9 $\pm$ 37.1	157.9 $\pm$ 11.3	203.7 $\pm$ 19.5
GSR	43	32	5	15.6	3.38	0.96	17.4 $\pm$ 1.2	68.9 $\pm$ 21.6	62.9 $\pm$ 17.6	54.5 $\pm$ 6.7	69.9 $\pm$ 11.4
IFREMER	134	74	36	48.6	4.10	0.98	17.8 $\pm$ 1.3	134 $\pm$ 24.8	129.2 $\pm$ 22.5	117.7 $\pm$ 9.3	145.4 $\pm$ 16.1
IOM	52	38	8	21.1	3.54	0.97	17.6 $\pm$ 1.2	102.1 $\pm$ 36.5	91 $\pm$ 28.5	65.5 $\pm$ 7.4	86.7 $\pm$ 12.6
OMS	172	78	25	32.1	3.82	0.96	15.7 $\pm$ 1.8	160.9 $\pm$ 33	154.1 $\pm$ 29.8	127.7 $\pm$ 10	162.4 $\pm$ 17.2
UK-1A	103	62	26	41.9	3.84	0.97	16.8 $\pm$ 1.5	173.4 $\pm$ 50.9	160 $\pm$ 42.9	106.6 $\pm$ 9.4	142 $\pm$ 16.2
UK-1B	169	89	29	32.6	4.07	0.97	16.8 $\pm$ 1.6	305.5 $\pm$ 88	282.9 $\pm$ 74.9	154.6 $\pm$ 11.4	210 $\pm$ 19.8
Total	1177	291	-	-	4.46	0.96	15.5 $\pm$ 1.86	501.9 $\pm$ 47	496.7 $\pm$ 45.7	441.9 $\pm$ 17.4	538.8 $\pm$ 30.1

Note: n = number of individuals; S<sub>obs</sub> = number of species; % Unique = percentage of S<sub>obs</sub> that are unique to the area; ES(20) = Expected number of species in a random draw of 20 individuals.



**FIGURE 2** Rarefaction curves of number of polychaete species as a function of number of individuals sampled from each area for the (a) 16S dataset and (b) COI dataset.

Although the PBD pattern may be broadly explained by species dissimilarities between regions, comparison against a null model found 28 out of 36 16S, and 22 out of 36 COI pairwise comparisons had a significantly different PBD than expected by chance (Appendix S4). For 16S  $UF_{tu}$ , 25 pairwise comparisons had significantly higher phylogenetic turnover than would be expected based on the observed taxonomic turnover. For COI  $UF_{tu}$ , 27 pairwise comparisons had higher phylogenetic turnover than expected. For both datasets,  $UF_{ne}$  values were typically low (Appendix S4).

### 3.3 | Biogeographic patterns

Cluster analyses using the turnover components of TBD and PBD found different patterns within both the 16S dataset (Figure 5a) and the COI dataset (Figure 5c). For the 16S dataset, hierarchical clustering recovered 4 optimal clusters for  $\beta_{jtu}$  and 6 for  $UF_{tu}$  (Figure 5a), and these clusters varied in composition. In comparison, clustering of the COI dataset recovered 3 optimal clusters for  $\beta_{jtu}$  and 4 for  $UF_{tu}$  (Figure 5c). Ordination of Bray-Curtis distance between areas, produced from chord-transformed taxonomic data, produced similar clustering patterns for both datasets, with APEI-6-NE separated furthest from all other areas (Figure 5b,d).

The distance decay of similarity showed no statistically significant correlation between NNESS and geographic distance for either dataset when all data were included (Figure 6a,b). However, for the COI data, when the analysis was restricted to the better sampled sites up to 500 km apart, there was a significant negative correlation between similarity and distance (Figure 6d; Pearson's Correlation Coefficient,  $t = -3.89$ ,  $p < .05$ ). For the 16S dataset,

total PBD had a significant positive relationship with geographic distance (Appendix S1, Figure 2). However, no significant relationships were found between  $UF_{tu}$  and  $UF_{ne}$  with distance (Appendix S1, Figure 2). For both datasets, phylogenetic turnover was high, and phylogenetic nestedness low between areas regardless of distance.

### 3.4 | Genetic connectivity

The six species selected to explore patterns of regional genetic diversity have been reported from several localities in the CCZ, mainly eastern (APEI-6, BGR, GSR, IFREMER, IOM, OMS, and UK-1), but *Paralacydonia cf. weberi* was also collected in the western CCZ in APEI-7, separated by over 3000 km. So far, four of these species seem to be restricted to the CCZ. However, the *Bathyglycinde cf. profunda* specimens analysed here share COI haplotypes with specimens collected in the Cape and Guinea Basins in the Atlantic Ocean (Böggemann, 2009), and *Lumbrinerides cf. laubieri* in the DISCOL site, in the South Pacific Ocean.

A total of 181 and 497 sequences from the 16S and COI markers respectively, were used to calculate genetic diversity metrics and TCS haplotype networks (Table 3). Haplotype diversity was much lower for 16S than for COI. For instance, for *Lumbrinerides cf. laubieri*, only 4 haplotypes were found across 58 sequences of 16S from five areas, whereas 23 haplotypes were found in 54 sequences of COI just in the BGR area. This higher diversity of COI haplotypes compared to 16S can be observed in the TCS haplotype networks, as well as the lack of genetic geographic structuring, i.e., most of the common haplotypes per each of the species were shared among



TABLE 2 Estimates of polychaete diversity on a regional scale adapted from Neal et al. (2011).

Area	Reference	Depth (m)	ES(150)
<i>Central Pacific abyss</i>			
Eastern CCZ (16S)	This study	4000–4500	94
Eastern CCZ (COI)	This study	4000–4500	77
DOMES	Glover et al. (2002)	5100	57.8
ECHO	Glover et al. (2002)	4800	62.2
EqPac 2N	Glover et al. (2002)	4400	76.8
<i>NE Atlantic abyss</i>			
Porcupine abyssal plain	Glover et al. (2001)	4800	59
Tagus abyssal plain	Glover et al. (2001)	5035	51.4
EUMELI oligotrophic site	Glover et al. (2001)	4600	62.8
<i>NW Atlantic slope</i>			
Carolinall	Schaff et al. (1992)	850	39
<i>West Antarctic deep-shelf</i>			
EASIZII 224	Hilbig et al. (2006)	279	48
EASIZII 341	Hilbig et al. (2006)	428	42.3
<i>Arctic shelf (Chukchi sea)</i>			
KS105	Feder et al. (2007)	25	28
CH47	Feder et al. (2007)	47	22.5

Note: ES(150) = Expected number of species in a random draw of 150 individuals.

different areas (Figure 7). Results of match-mismatch distributions can be found in Stewart et al. (2023).

## 4 | DISCUSSION

### 4.1 | Biodiversity in the CCZ

Species are a fundamental unit of biodiversity and evolution (Sites & Marshall, 2004). However, there is a dearth of knowledge on the taxonomy and distribution of deep-sea species owing largely to a lack of data. Here, a molecular species delimitation approach was applied to explore levels and patterning of polychaete diversity across a 3 million km<sup>2</sup> region of the eastern Pacific. There have been few papers that have compared macrofaunal biodiversity in the CCZ with other regions, although diversity is often hypothesised to be high (e.g., Janssen et al., 2015). We provide here some lines of new evidence that do support this, at least for macrofaunal polychaetes (individuals >300 μm). Species estimators predict

>550 polychaete species in the region (from an actual species number of 315), higher than reported elsewhere (Bonifácio et al., 2020). Additionally, when we place the results in a global context (Table 3), it is apparent that diversity in the CCZ samples is 40%–50% higher than comparable abyssal samples in the Atlantic and higher than in other bathyal or abyssal habitats globally (Feder et al., 2007; Glover et al., 2001, 2002; Hilbig et al., 2006; Neal et al., 2011; Schaff et al., 1992).

These results must, however, be treated with caution, as studies referenced in Table 3 used morphological methods to determine species, whilst here we have used a DNA-based delimitation method that is likely to detect many cryptic species (Knowlton, 1993). It is therefore probable that the previous studies have under-estimated diversity. By what factor is difficult to ascertain, though a preliminary study on a smaller dataset that was identified morphologically and then subsequently analysed for DNA, detected an approximate 25% increase in species number when molecular species delimitation was used (Glover, Dahlgren, & Wiklund, Pers. Comms.). This value of 25% is also supported by molecular work on Canadian polychaetes (Carr et al., 2011). Nevertheless, even if this 'cryptic species bias' was higher than our rough estimate of 25%, polychaete diversity in the abyssal CCZ is as high or higher than anywhere else sampled in the soft-sediment deep sea, including bathyal regions. This supports the proposition of Glover et al. (2002), and the eDNA results of Lejzerowicz et al. (2021), that abyssal CCZ and equatorial Pacific sediments are higher in diversity than in other abyssal regions, and do not conform to the theory of declining diversity from the bathyal to the abyssal zones (Rex & Etter, 2010).

Relating biodiversity at a local level to environmental characteristics, a traditional ecological analysis in studies of other ecosystems, remains rare in abyssal systems primarily because of large data gaps. We find evidence in this study that the heterogeneity of the CCZ environment could influence diversity. Food input, largely in the form of particulate organic carbon (POC) flux from surface waters, is one of the primary drivers of species richness and community composition in deep-sea benthic ecosystems (Smith et al., 2008; van der Grient & Rogers, 2021). Within this study, the highest diversity values were recorded in the UK-1A, UK-1B, and OMS areas, all of which are located towards the eastern edge of the CCZ, underlying the area of highest POC flux (Vanreusel et al., 2016; Volz et al., 2018, 2020; Washburn, Jones, et al., 2021), which may explain their higher levels of diversity. These areas also had the largest numbers of shared species, as well as similar family and feeding-guild compositions. Significant positive correlations between polychaete abundance and POC flux at the seafloor across the CCZ have been previously reported (Bonifácio et al., 2020; Washburn, Menot, et al., 2021). In low productivity systems, such as the abyssal seafloor, models predict that food chain length is positively correlated with resource availability (Post, 2002). These predictions are matched by the high proportion of predatory and omnivorous species found in these south-eastern areas of the CCZ, as greater food supply allows for the presence of greater trophic diversity (McClain & Schlacher, 2015).

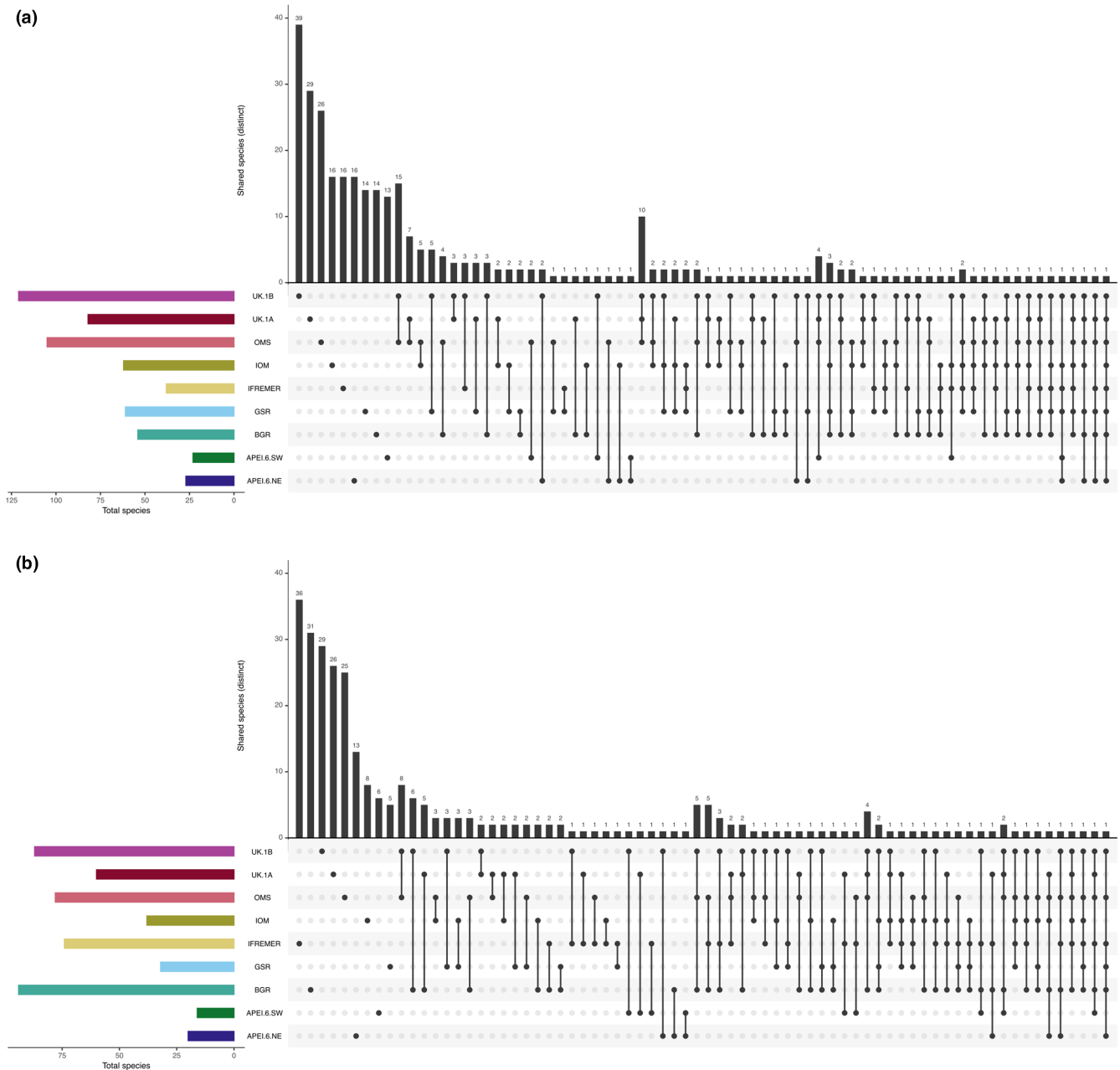
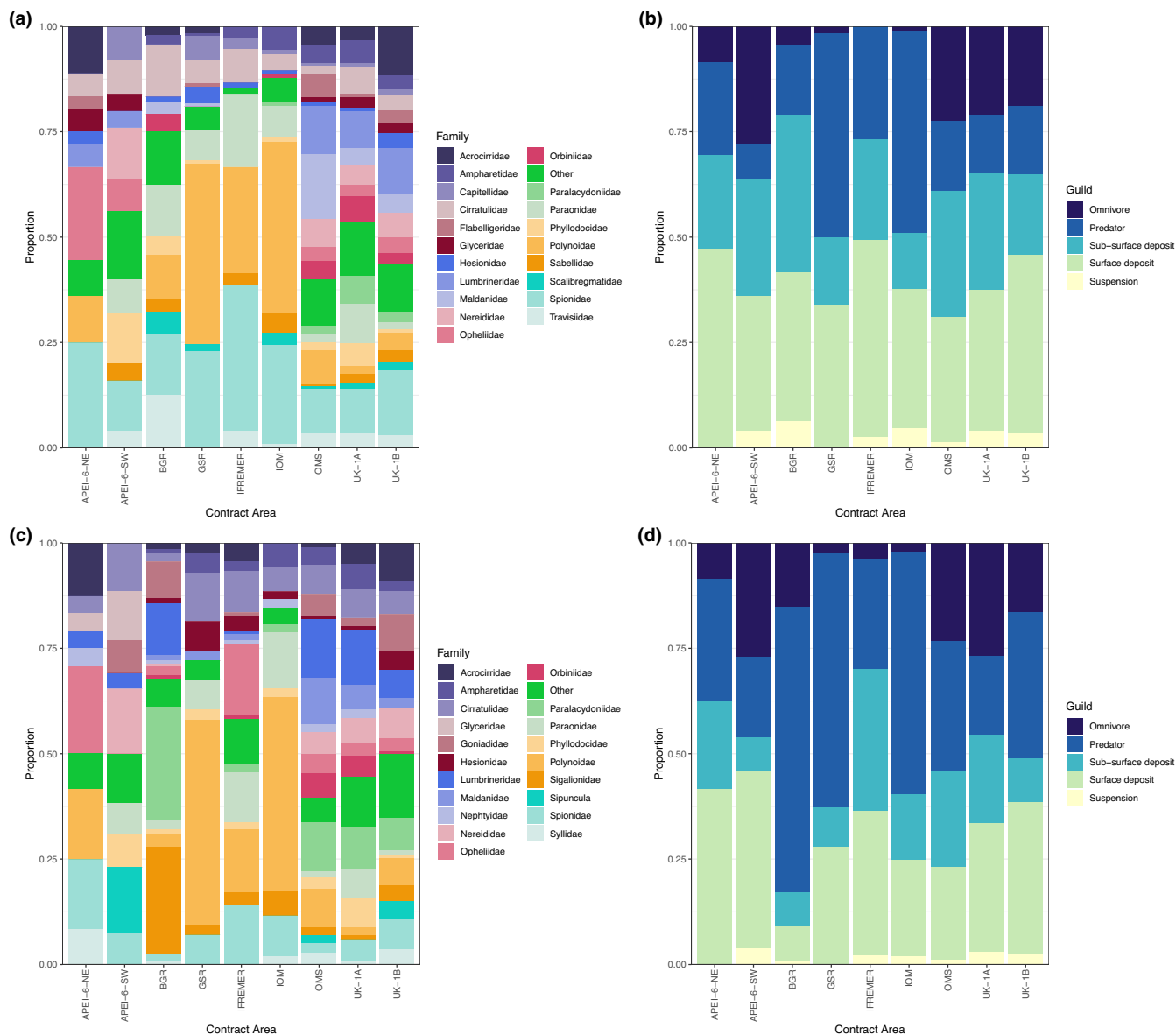


FIGURE 3 UpSet plots of unique polychaete species between sampled areas for the (a) 16S dataset, and (b) COI dataset. Coloured bars show the total number of species identified in each area. Black dots show intersections between areas, with the bar above representing the number of species unique to that intersection.

#### 4.2 | Beta diversity and phylogenetic diversity in the CCZ

When all data were examined, although beta diversity and phylogenetic diversity were high for all sites, we did not find a statistically significant linear relationship between geographic distance and species similarity (measured by NNESS). However, when COI data was examined for sites only up to 500 km distance, there was a negative relationship between geographic distance and similarity. One explanation for this is that the closer sites (e.g., BGR, OMS, and UK-1) are better sampled, and hence the signal is better resolved. This

supports previous findings by Bonifácio et al. (2020), who report a significant negative relationship between NNESS similarity and geographic distance when excluding APEI-3, a site on the other side of the Clarion Fracture. It could also be the case that APEI-6-NE, one of the furthest sites from all others and also located on the other side of the Clarion Fracture, was causing most of the low NNESS values between sites. Therefore, by removing sites with pairwise distances above 500 km, we potentially remove the confounding factor of the fracture zone. The nMDS results also placed APEI-6-NE as the most distinct from other sites, further suggesting that the Clarion Fracture potentially acts as a biogeographic barrier.

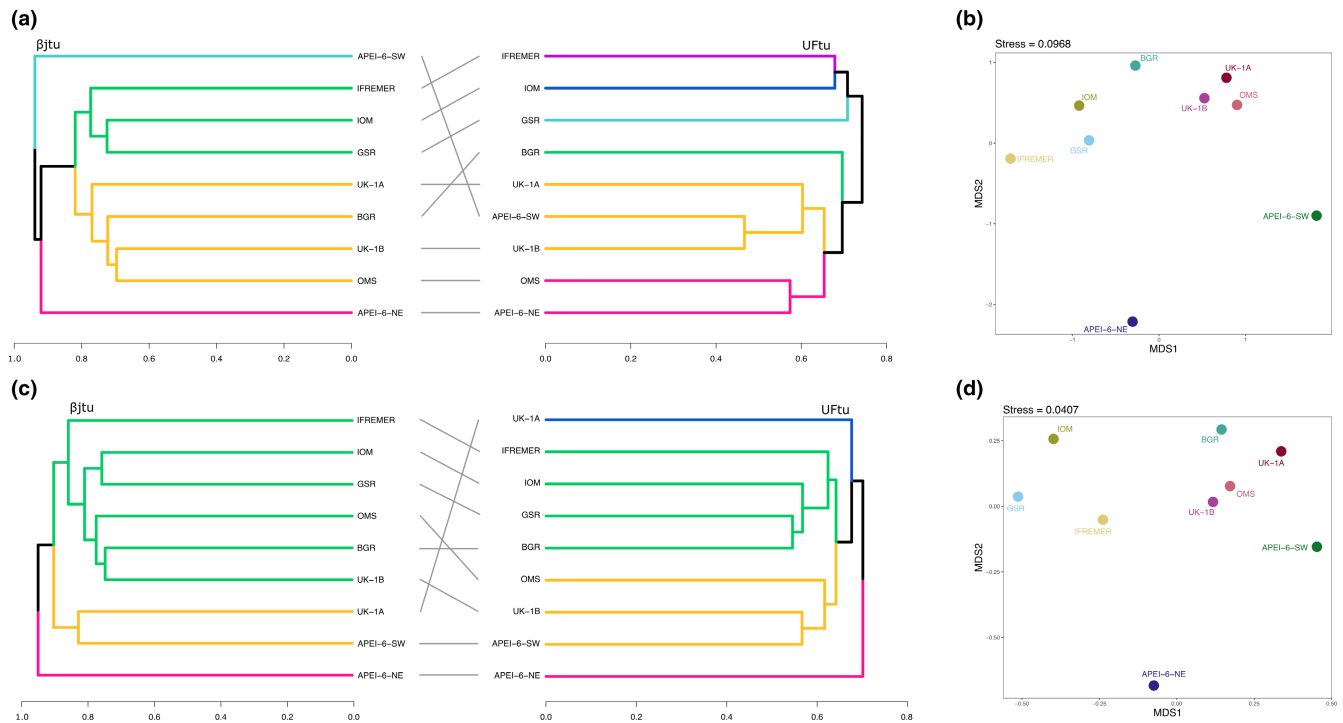


**FIGURE 4** Bar plots of the relative proportion of polychaete families and feeding guilds among polychaete specimens from each sampled area. (a,b) 16S dataset; (c,d) COI dataset.

The inverse relationship between shared species and distance could also result if a subset of rare species have restricted ranges, while more abundant species tend to be widely distributed (Washburn, Menot, et al., 2021). Such patterns have been observed in other better studied ecosystems, in which rarity is often correlated with small species ranges (Pimm et al., 2014). Another explanation is that the relationship is significant, but non-linear, with species similarity decreasing linearly between sites up to around 500km before levelling off owing to a currently unknown phenomenon. This relationship, once completely resolved, could be used to model extinction risk at regional scales in the CCZ.

While these findings may suggest that dispersal limitation plays the main role in controlling assemblage structure across the CCZ, the high genetic turnover ( $UF_{tu}$ ) regardless of distance between sites found here suggests that environmental filtering and

niche-based processes may also play a role in species distributions. Patterns of PBD are almost completely unknown for the deep sea (Janssen et al., 2015), with nearly all analyses to date considering only turnover in taxonomic composition. A spatially extensive analysis of taxonomic, functional, and phylogenetic beta diversity in deep-sea bivalves found rates of distance decay of similarity with environmental distance that were 8- to 44-fold steeper than with spatial distance between sites (McClain et al., 2012). However, both Janssen et al. (2015) and McClain et al. (2012) only considered total PBD, which hinders the assessment of the relative roles of neutral and niche-based processes in shaping PBD patterns (Leprieur et al., 2011, 2012). This is because spatial turnover and nestedness are two antithetical phenomena impacted by different environmental and biological processes (Leprieur et al., 2009). Beta diversity, and more recently PBD, is increasingly acknowledged as key to



**FIGURE 5** Clustering analyses of polychaete species composition. (a) tanglegram of hierarchical clustering results from  $\beta_{jtu}$  and  $UF_{tu}$  of the 16S dataset; (b) 2D non-metric multi-dimensional scaling results based on Bray-Curtis distance between chord-transformed data of the 16S dataset; (c) tanglegram of hierarchical clustering results from  $\beta_{jtu}$  and  $UF_{tu}$  of the COI dataset; (d) 2D non-metric multi-dimensional scaling results based on Bray-Curtis distance between chord-transformed data of the COI dataset. Branches of dendrograms are coloured based on results of cluster analysis.

understanding local and regional diversity dynamics, which translate into conservation-relevant insights into large-scale diversity maintenance (Socolar et al., 2016; Winter et al., 2013). This represents a significant area requiring more study across the CCZ, if biodiversity is to be effectively protected.

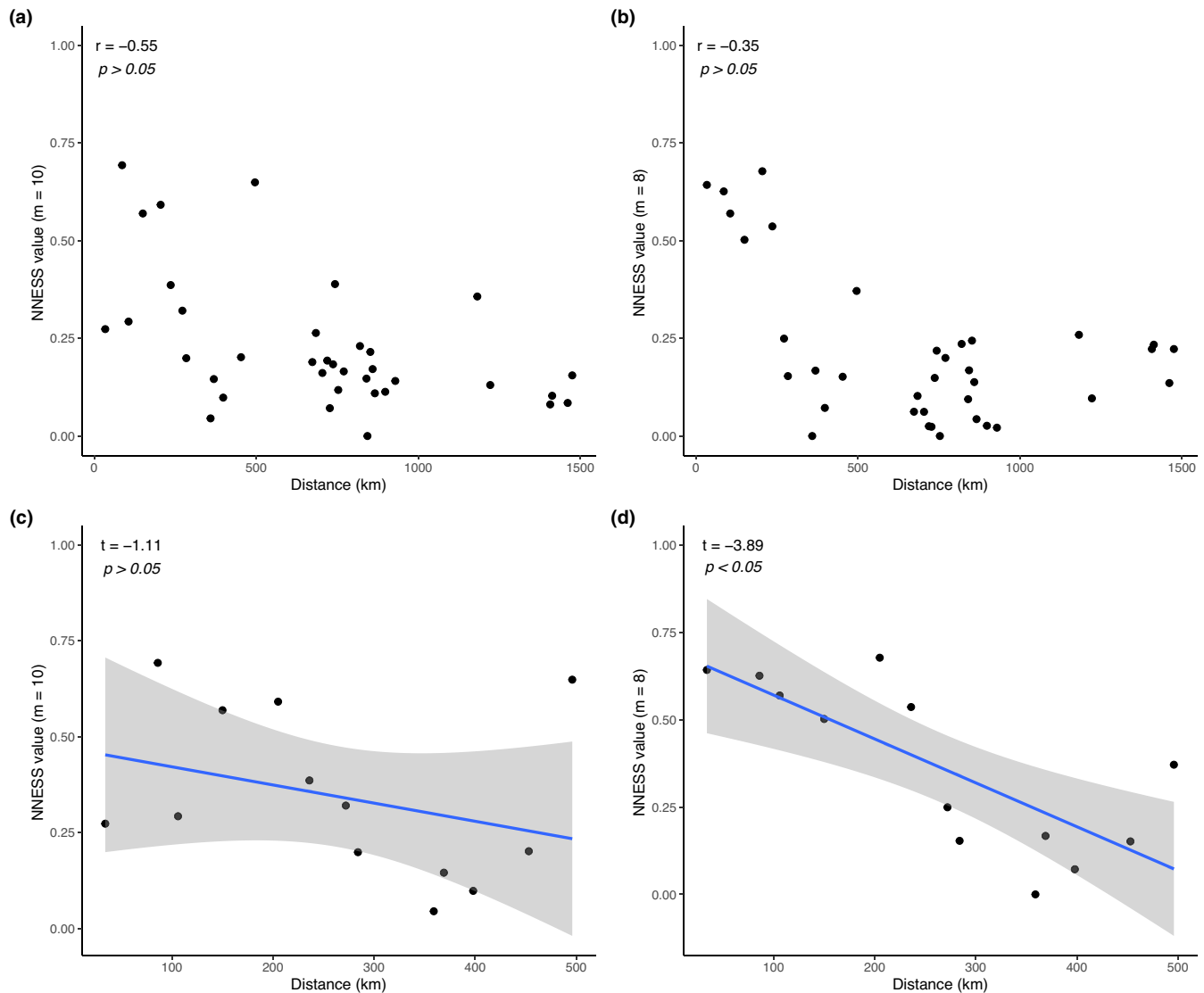
When compared against a null model, non-random patterns of lineage turnover were found for 61%–77% of pairwise comparisons. Higher PBD than expected based on TBD can be attributed to several processes, including: the replacement (turnover) of entire phylogenetic lineages as a response to environmental gradients, past speciation and extinction events, dispersal limitation, niche-based processes, or a combination of all four (Graham & Fine, 2008). Similar results have been documented between communities delimited by strong environmental gradients (Graham et al., 2009), or large geographic distances (Fine & Kembel, 2011; Morlon et al., 2011). The relative influences of deterministic and stochastic processes in regulating patterns of biodiversity remain of fundamental interest to studies of deep-sea evolution and ecology (Rex & Etter, 2010). Integration of phylogenetic information into diversity and community-ecology frameworks can enhance our understanding of the varying roles of ecological and evolutionary processes in shaping observed patterns of alpha and beta diversity.

The phylogenetic distinctness of APEI-6-NE in both datasets, when combined with observed low alpha diversity, suggests the presence of deterministic factors shaping the community

composition at this site. We also found no significant relationship between geographic distance and PBD, suggesting that the high SES values between regions were driven by environmental rather than spatial gradients. Environmental heterogeneity across the CCZ is well documented (Menendez et al., 2019; Mogollón et al., 2016; Volz et al., 2018, 2020; Washburn, Menot, et al., 2021), and this is likely to result in environmental filtering, whereby local communities experiencing different environmental conditions (e.g., POC flux, nodule coverage, sediment geochemistry) contain different phylogenetic lineages. Further analyses involving local-scale environmental data are therefore vital for elucidating the processes driving observed patterns in taxonomic and phylogenetic turnover and will be important in effective conservation of the CCZ abyssal fauna.

### 4.3 | Biogeographic patterns and species ranges

The development of evidence-based environmental management in the CCZ is reliant on data evaluating the biogeography and connectivity of species at a regional level (Glover et al., 2016). This study presents the largest published analysis of polychaete community data, using internally consistent taxonomy, from across the CCZ, which allows us to make some preliminary observations as to the biogeography of the region. Species ranges varied greatly, with some polychaete species ranging nearly 5000 km (between the most



**FIGURE 6** (a,b) Distance decay of New Normalised Expected Species Shared (NNESS) between all pairs of sampled areas with significance determined by Mantel analysis. (a) results from 16S dataset using  $m = 10$ ; (b) results from COI dataset using  $m = 8$ . (c,d) Distance decay of NNESS between a subset of sampled areas less than 500km apart, with significance determined by Pearson's correlation. (c) results from 16S dataset using  $m = 10$ ; (d) results from COI dataset using  $m = 8$ .

distantly sampled areas APEI-7 and UK-1), while over 50% of species were found only at a single site.

The APEI network was originally designed to capture the full range of seafloor habitats within the CCZ, to create reserve areas that are biogeographically representative of the wider region (Wedding et al., 2013). Here, a very preliminary assessment as to the representativeness and appropriateness of APEI-6 to preserve polychaete biodiversity can be conducted. Between 37.5% and 70% of the species identified in APEI-6-SW and -NE were unique to the area, and both areas formed distinct taxonomic and phylogenetic clusters. Caution must be taken when interpreting these results, however, because limited sampling was conducted at these two sites, which may influence the community patterns observed. Differences between sites may also be significantly influenced by the Clarion Fracture which bisects APEI-6 approximately through the centre. APEI-3,

which largely sits to the north of the Clarion Fracture, has been shown to host significantly different communities of polychaetes (Bonifácio et al., 2020; Bonifácio, Neal, & Menot, 2021), nematodes (Hauquier et al., 2019), and ophiuroids (Christodoulou et al., 2020). It is therefore possible that the Clarion fracture acts as a physiographic barrier, affecting the dispersal, and therefore taxonomic composition of communities either side.

Geochemical data suggest that APEI-6 is different from UK-1 sites ~500km away (Menendez et al., 2019). Both nodules and sediments from sites within APEI-6 displayed significant chemical differences from those in UK-1, including higher levels of iron and cobalt (Menendez et al., 2019). The presence of nodules plays a key role in structuring metazoan communities and diversity within the CCZ, proving hard substrate for the growth of sessile mega- and macrofauna such as cnidarians, polychaetes, and sponges, as well as

TABLE 3 Genetic diversity statistics for six genetic species of polychaetes occurring across the Clarion Clipperton Zone.

Species	Locality	COI					16S				
		<i>n</i>	<i>S</i>	<i>h</i>	Hd	$\pi$	<i>n</i>	<i>S</i>	<i>h</i>	Hd	$\pi$
<i>Bathylgycinde</i> cf. <i>profunda</i>	ALL	117	32	37	0.889	0.006	11	1	2	0.182	0.001
	APEI-6-SW	2	2	2	1.000	0.005					
	BGR	58	22	21	0.878	0.005					
	Cape Basin	1	0	1							
	GSR	12	13	8	0.894	0.006					
	Guinea Basin	2	0	1	0.000	0.000					
	IFREMER	6	8	6	1.000	0.009					
	IOM	12	8	7	0.833	0.006					
	OMS	8	8	6	0.929	0.008	5	1	2	0.400	0.001
	UK-1A	2	1	2	1.000	0.003	2	0	1	0.000	0.000
UK-1B	14	10	9	0.912	0.005	4	0	1	0.000	0.000	
<i>Lumbrinerides</i> cf. <i>laubieri</i>	ALL	96	30	40	0.853	0.004	58	3	4	0.102	0.000
	APEI-6-SW	1	0	1			1	0	1		
	BGR	54	19	23	0.867	0.004					
	DISCOL	10	7	5	0.800	0.004	14	2	3	0.275	0.001
	OMS	18	11	11	0.915	0.004	18	0	1	0.000	0.000
	UK-1A	8	4	4	0.750	0.003	7	1	2	0.286	0.001
UK-1B	5	4	4	0.900	0.004	18	0	1	0.000	0.000	
<i>Neanthes</i> <i>goodayi</i>	ALL	33	2	3	0.119	0.000	38	1	2	0.053	0.000
	APEI-6-SW	2	0	1	0.000	0.000	2	0	1	0.000	0.000
	BGR	7	0	1	0.000	0.000					
	GSR	2	0	1	0.000	0.000					
	IOM	2	0	1	0.000	0.000					
	OMS	6	0	1	0.000	0.000	16	0	1	0.000	0.000
	UK-1A	5	0	1	0.000	0.000	6	1	2	0.333	0.002
	UK-1B	9	2	2	0.222	0.001	14	0	1	0.000	0.000
<i>Nicomache</i> cf. <i>benthaliana</i>	ALL	19	34	13	0.947	0.014	34	3	4	0.316	0.001
	BGR	2	23	2	1.000	0.048	1	0	1		
	OMS	13	13	9	0.923	0.007	22	3	4	0.455	0.002
	UK-1A	3	23	3	1.000	0.029	3	0	1	0.000	0.000
	UK-1B	1	0	1			8	0	1	0.000	0.000
<i>Ophelina</i> <i>martinezarbizu</i>	ALL	17	20	5	0.574	0.005	13	5	4	0.423	0.002
	APEI-6-NE	4	2	2	0.500	0.002	6	3	2	0.333	0.003
	BGR	6	17	3	0.600	0.011					
	IFREMER	3	1	2	0.667	0.001					
	OMS	1	0	1			4	1	2	0.500	0.001
	UK-1B	3	0	1	0.000	0.000	3	1	2	0.667	0.002
<i>Paralacydonia</i> cf. <i>weberi</i>	ALL	215	32	44	0.800	0.010	27	2	3	0.553	0.002
	APEI-7	1	0	1			1	0	1		
	BGR	146	26	33	0.809	0.010					
	GSR	10	7	5	0.667	0.008					
	IFREMER	5	9	4	0.900	0.013					
	IOM	10	9	5	0.756	0.010	1	0	1		
	OMS	20	10	10	0.879	0.011	8	1	2	0.536	0.002
	UK-1A	10	9	6	0.889	0.012	10	2	3	0.600	0.002
UK-1B	13	6	4	0.603	0.008	7	1	2	0.476	0.002	

Note: Number of samples (*n*), number of segregating sites (*S*), number of haplotypes (*h*), haplotype diversity (Hd), and nucleotide diversity ( $\pi$ ), are given for each of the species, genetic markers, and localities.

habitat for meiofauna such as nematodes, tardigrades, and harpacticoid copepods (De Smet et al., 2017; Miljutina et al., 2010; Pape et al., 2021; Simon-Lledó et al., 2019). It has been suggested that sediment shear strength can influence macrofaunal diversity patterns (Chuar et al., 2020); however, it is currently unknown if subtle changes in nodule geochemistry influence biodiversity and community composition. The available biological and geochemical evidence suggests that some areas of APEI-6 are partially representative of the exploration areas to the south, yet are different in several key characteristics including oxygen penetration depth, sediment grain size, and nodule shape and size (Jones et al., 2021). However, thus far, sampling of APEIs has been very limited (Washburn, Menot, et al., 2021) and increased sampling is necessary to fully assess the representativeness of the complete network of 13 APEIs.

#### 4.4 | Population connectivity in the CCZ

We have found a high degree of connectivity between populations of macrofaunal species, but it should be noted that these samples are limited to the more abundant and potentially more widespread species. Barriers to dispersal, such as unidirectional current regimes or geography, and differences in habitats and ecosystems are factors that shape the spatial distribution of species (Slatkin, 1987). In the deep sea, bathymetry has been suggested as an additional barrier more important to geneflow than geographical distance (see Taylor & Roterman, 2017), as seen in the case of scavenging amphipods (Havermans et al., 2013). The lack of evidence for population structure in the polychaete species investigated here suggests that the broadly similar depths of the CCZ abyssal plain favours gene flow at the time scales relevant for mitochondrial data (Hellberg et al., 2002). These results also indicate that the polychaete species investigated here have the potential for long range dispersal, as found in other common abyssal polychaete genera *Prinospio* and *Aurospio* (Guggolz et al., 2020). This contrasts with studies on connectivity and gene flow from annelids at shelf depths and non-abyssal deep-sea sites such as hydrothermal vents, often indicating population structure at 500 km geographical scales (David & Cahill, 2020; Kojima et al., 2012; Vrijenhoek, 2010; Williams et al., 2016).

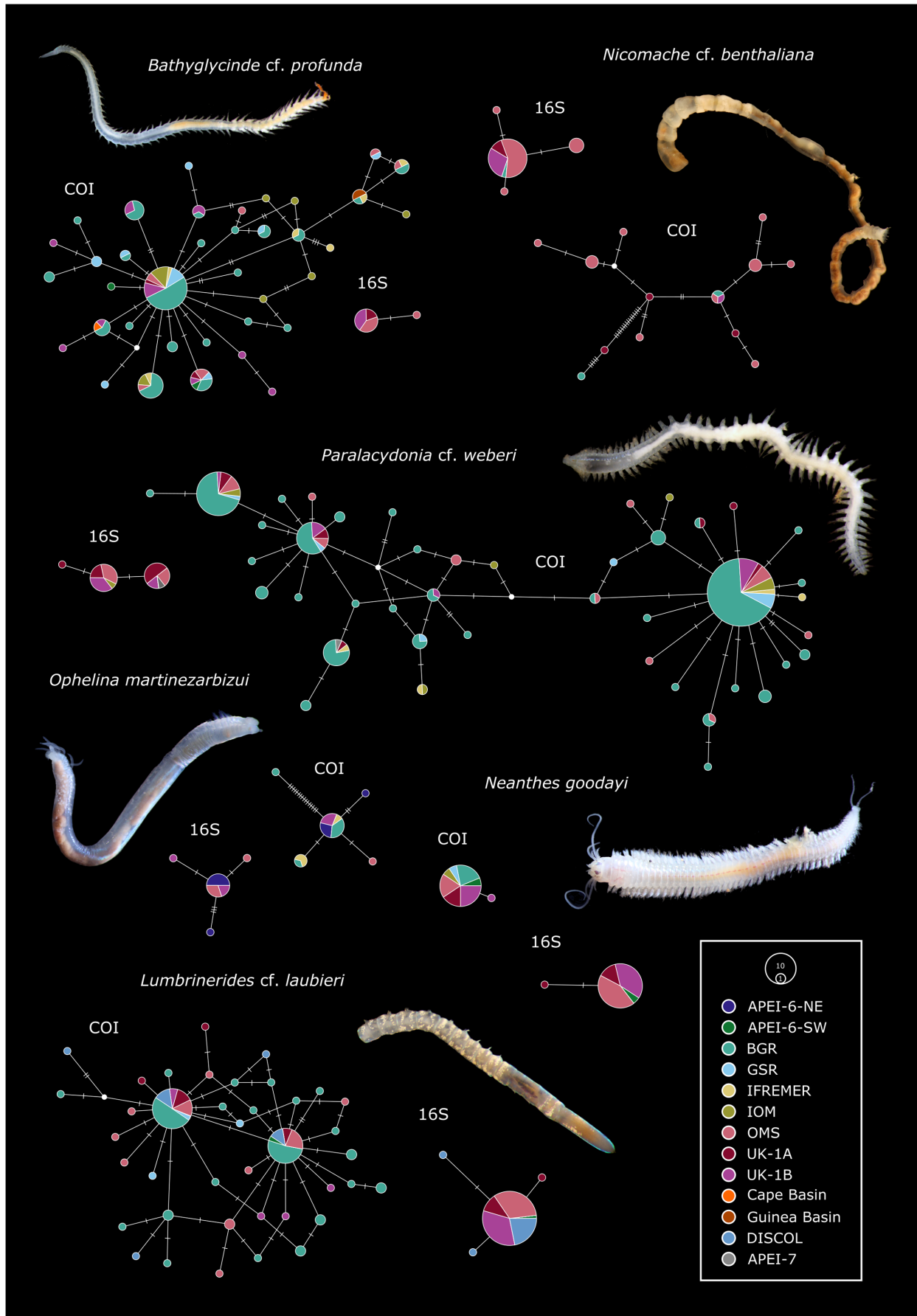
We also report high levels of genetic diversity in the sediment dwelling species; which when following the conventional understanding of coalescence would indicate shrinking populations (Kuhner, 2009). We interpret this pattern in our data to result from under-sampling, since it seems unlikely that the relatively stable abyssal-plain environment would cause several populations to decline. In contrast with the other sediment-dwelling species, *Neanthes goodayi*, a nodule-dwelling species, shows low genetic diversity for COI, the most variable genetic marker. Contrastingly, *Nicomache cf. benthaliana* did not show low genetic diversity, despite also inhabiting nodules. With the assumption that nodule-dwelling species experience the same general biological and physical factors such as currents, depths, and productivity, this difference indicates that

nodule habitat endemism provides a geomorphic factor that impacts species genetic variation through factors such as the patchy nature of the habitat (Zeng et al., 2020). Information provided here on genetic diversity and gene flow should, however, be taken with caution, as it only uses two mitochondrial genetic markers. Other genetic markers, such as microsatellites or genome-wide scans (e.g., RADseq: restriction-site associated DNA sequencing), may be able to provide finer-scale resolution for genetic connectivity studies (Andrews et al., 2016).

We cannot report on the population connectivity of the rare species that represent over half of the individuals collected, since in most cases, these are represented by a single specimen. Basic biological knowledge would suggest that this vast number (hundreds) of species do have viable populations; however, we do not know how they are distributed in space. There is the possibility that they have viable populations elsewhere in the abyss and consist of sink populations supported by larval dispersal from elsewhere (Hardy et al., 2015; Rex et al., 2005). Contrastingly, they may have local populations that go through boom-bust cycles dependent on food availability, and should this be the case, they are not protected from extinctions in the face of nodule mining. At present, the only known solution to this problem is increased sampling, but more detailed genomic analyses may also provide some help in understanding their demographic histories (e.g., Hohenlohe et al., 2021). From a management perspective, we can hypothesise that the abundant and well-connected species so far studied may well be able to recolonise defaunated regions, assuming environmental conditions are suited. For the rare species (the majority), we must await further data.

## 5 | CONCLUSION

Significant policy decisions on deep-sea mining are on the near horizon, and lawmakers need access to accurate biodiversity data to make informed choices. Results presented here provide an insight into both taxonomic and phylogenetic beta diversity for macrofauna inhabiting a potential deep-sea mining zone, suggesting that biodiversity in the abyssal Pacific is higher than in other comparable abyssal settings. The turnover of lineages and species was consistently high between sites, regardless of geographic distance, and comparison against a null model identified that phylogenetic turnover was typically higher than would be expected based on differences in species composition. These results suggest that environmental filtering rather than dispersal limitation plays a greater role in regulating spatial patterns of biodiversity in the CCZ, highlighting the importance of considering the biogeochemical representativeness of designated protected areas if they are to succeed in preserving the CCZ fauna. Taken together, these results advance our understanding and give new insights into the mechanisms and processes influencing these abyssal communities. The greater our understanding of the processes driving patterns of biodiversity, the greater chance we have





**FIGURE 7** TCS haplotype networks based on COI and 16S sequences of six polychaete species. Circles are proportional to the number of samples and all regions are colour coded. White filled circles indicate missing haplotypes. Branches are not scaled to the number of nucleotide substitutions; substitutions between haplotypes are indicated by vertical bars along the branches. Images of species are not to scale.

of being able to effectively mitigate the effects of potential environmental change caused by nodule mining.

## ACKNOWLEDGEMENTS

We thank the masters, crew and technical staff on the RV *Melville*, RV *Thomas G Thompson*, M/V *Pacific Constructor*, M/V *Mt. Mitchell* and RV *Sonne* for their outstanding support. This research was supported by funding from UK Seabed Resources Ltd to the ABYSSLINE project (Lead PI C. R. Smith) and the Natural Environmental Research Council grants NE/S007210/1 and 'SMARTX - Seabed Mining and Resilience to experimental Impact' NE/T002913/1, with additional support from the JPI-Oceans programme (Swedish Research Council FORMAS grant # 210-2014-1737 and The Norwegian Research Council for JPIO MiningImpact II grant #290931), and Portuguese funds through FCT—Fundação para a Ciência e a Tecnologia, within the special support to the pilot action "Ecological aspects of deep-sea mining". Financial support was also provided by FCT/MCTES to CESAM (UIDP/50017/2020+UIDB/50017/2020+LA/P/0094/2020) and its team through national funds. ECDS was also funded by the Natural Environmental Research Grant NE/S007210/1. AR was funded by national funds (OE), through FCT, I.P., in the scope of the framework contract foreseen in the numbers 4, 5 and 6 of the article 23, of the Decree-Law 57/2016, of August 29, changed by Law 57/2017, of July 19. ST received funding from the grant PID2020-117115GA-100 funded by MCIN/AEI/10.13039/50110001103 and from the grant PID2020-117115GA-100 funded by the MCIN/AEI/10.13039/501100011033 and by the Ramón y Cajal grant RYC2021-03152-I, funded by the MCIN/AEI/10.13039/501100011033 and the European Union «NextGenerationEU»/PRTR». EP and BDS were funded by a service agreement between Ghent University and Global Sea Mineral Resources NV. We acknowledge the continued support from the NHM-UK Consultancy team (Harry Rousham, Robyn Fryer, Kate Rowland). We received help sorting and sieving samples at sea from Magdalena Georgieva and Madeleine Brasier, and the entire ABYSSLINE science team in successful deep-sea coring operations.

## CONFLICT OF INTEREST STATEMENT

The authors declare there is no conflict of interest.

## PEER REVIEW

The peer review history for this article is available at <https://publons.com/publon/10.1111/ddi.13690>.

## DATA AVAILABILITY STATEMENT

All data are made available in an associated Dryad repository (Stewart et al., 2023; <https://doi.org/10.5061/dryad.c2fqz61ck>), and in the supplementary material.

## ORCID

Eva C. D. Stewart  <https://orcid.org/0000-0001-8383-5705>  
 Guadalupe Bribiesca-Contreras  <https://orcid.org/0000-0001-8163-8724>  
 Sergi Taboada  <https://orcid.org/0000-0003-1669-1152>  
 Helena Wiklund  <https://orcid.org/0000-0002-8252-3504>  
 Ascensão Ravara  <https://orcid.org/0000-0002-1689-2985>  
 Ellen Pape  <https://orcid.org/0000-0003-2881-8341>  
 Marina R. Cunha  <https://orcid.org/0000-0001-8833-6980>  
 Daniel O. B. Jones  <https://orcid.org/0000-0001-5218-1649>  
 Craig R. Smith  <https://orcid.org/0000-0002-3976-0889>  
 Adrian G. Glover  <https://orcid.org/0000-0002-9489-074X>  
 Thomas G. Dahlgren  <https://orcid.org/0000-0001-6854-2031>

## REFERENCES

- Altschul, S. F., Gish, W., Miller, W., Myers, E. W., & Lipman, D. J. (1990). Basic local alignment search tool. *Journal of Molecular Biology*, 215(3), 403–410.
- Andrews, K. R., Good, J. M., Miller, M. R., Luikart, G., & Hohenlohe, P. A. (2016). Harnessing the power of RADseq for ecological and evolutionary genomics. *Nature Reviews Genetics*, 17(2), 81–92.
- Baselga, A. (2010). Partitioning the turnover and nestedness components of beta diversity. *Global Ecology and Biogeography*, 19(1), 134–143.
- Baselga, A., & Orme, C. D. L. (2012). betapart: An R package for the study of beta diversity. *Methods in Ecology and Evolution*, 3(5), 808–812.
- Basualdo, C. V. (2017). Choosing the best non-parametric richness estimator for benthic macroinvertebrates databases. *Revista de la Sociedad Entomológica Argentina*, 70(1-2), 27.
- Bober, S., Brix, S., Riehl, T., Schwentner, M., & Brandt, A. (2018). Does the Mid-Atlantic Ridge affect the distribution of abyssal benthic crustaceans across the Atlantic Ocean? *Deep Sea Research Part II: Topical Studies in Oceanography*, 148, 91–104.
- Böggemann, M. (2009). Polychaetes (Annelida) of the abyssal SE Atlantic. *Organisms Diversity & Evolution*, 9(4-5), 251–428.
- Bonifácio, P., Martínez Arbizu, P., & Menot, L. (2020). Alpha and beta diversity patterns of polychaete assemblages across the nodule province of the eastern Clarion-Clipperton Fracture Zone (equatorial Pacific). *Biogeosciences*, 17(4), 865–886.
- Bonifácio, P., Neal, L., & Menot, L. (2021). Diversity of deep-sea scale-worms (Annelida, Polynoidae) in the Clarion-Clipperton Fracture Zone. *Frontiers in Marine Science*, 8, 1098.
- Bonifácio, P., Neal, L., Omnes, E., & Menot, L. (2021). Polychaete fauna belonging to family Polynoidae of the Clarion-Clipperton Fracture Zone sampled during SONNE cruise SO239. PANGAEA. <https://doi.org/10.1594/PANGAEA.926674>
- Bray, J. R., & Curtis, J. T. (1957). An ordination of the upland forest communities of southern Wisconsin. *Ecological Monographs*, 27(4), 326–349.
- Bribiesca-Contreras, G., Verbruggen, H., Hugall, A. F., & O'Hara, T. D. (2019). Global biogeographic structuring of tropical shallow-water brittle stars. *Journal of Biogeography*, 46(7), 1287–1299.
- Brix, S., Osborn, K. J., Kaiser, S., Truskey, S. B., Schnurr, S. M., Brenke, N., Malyutina, M., & Martínez Arbizu, P. (2020). Adult life strategy affects distribution patterns in abyssal isopods—Implications

- for conservation in Pacific nodule areas. *Biogeosciences*, 17(23), 6163–6184.
- Burnham, K. P., & Overton, W. S. (1979). Robust estimation of population size when capture probabilities vary among animals. *Ecology*, 60(5), 927–936.
- Carr, C. M., Hardy, S. M., Brown, T. M., Macdonald, T. A., & Hebert, P. D. (2011). A tri-oceanic perspective: DNA barcoding reveals geographic structure and cryptic diversity in Canadian polychaetes. *PLoS One*, 6(7), e22232.
- Chao, A. (1984). Nonparametric estimation of the number of classes in a population. *Scandinavian Journal of Statistics*, 11, 265–270.
- Chao, A., Ma, K., Hsieh, T., & Chiu, C. (2016). *SpadeR: Species-richness prediction and diversity estimation with R*. R package version 0.1, 1.
- Chiu, C. H., Wang, Y. T., Walther, B. A., & Chao, A. (2014). An improved nonparametric lower bound of species richness via a modified good–turing frequency formula. *Biometrics*, 70(3), 671–682.
- Christodoulou, M., O'Hara, T., Hugall, A. F., Khodami, S., Rodrigues, C. F., Hilario, A., Vink, A., & Martinez Arbizu, P. (2020). Unexpected high abyssal ophiuroid diversity in polymetallic nodule fields of the northeast Pacific Ocean and implications for conservation. *Biogeosciences*, 17(7), 1845–1876.
- Christodoulou, M., O'Hara, T. D., Hugall, A. F., & Arbizu, P. M. (2019). Dark ophiuroid biodiversity in a prospective abyssal mine field. *Current Biology*, 29(22), 3909–3912.e3.
- Chuar, C. H., Tong, S. J. W., Chim, C. K., San Wong, H. P., & Tan, K. S. (2020). Abyssal macrofaunal community structure in the polymetallic nodule exploration area at the easternmost region of the Clarion–Clipperton Fracture Zone, Pacific Ocean. *Deep Sea Research Part I: Oceanographic Research Papers*, 161, 103284.
- Clement, M., Snell, G., Walker, P., Posada, D., & Crandall, K. (2002). *TCS: Estimating gene genealogies*. Paper presented at the International Parallel and Distributed Processing Symposium.
- Cordier, T., Angeles, I. B., Henry, N., Lejzerowicz, F., Berney, C., Morard, R., Brandt, A., Cambon-Bonavita, M. A., Guidi, L., Lombard, F., Arbizu, P. M., Massana, R., Orejas, C., Poulain, J., Smith, C. R., Wincker, P., Arnaud-Haond, S., Gooday, A. J., de Vargas, C., & Pawlowski, J. (2022). Patterns of eukaryotic diversity from the surface to the deep-ocean sediment. *Science Advances*, 8(5), eabj9309.
- Dapporto, L., Ramazzotti, M., Fattorini, S., Talavera, G., Vila, R., & Dennis, R. L. (2013). recluster: An unbiased clustering procedure for beta-diversity turnover. *Ecography*, 36(10), 1070–1075.
- David, A. A., & Cahill, J. (2020). Tri-oceanic connectivity of the supposedly cosmopolitan polychaete, *Harmothoe imbricata* (Annelida: Polynoidae): Insights from the COI marker. *Marine Biology Research*, 16(4), 256–264.
- De Smet, B., Pape, E., Riehl, T., Bonifácio, P., Colson, L., & Vanreusel, A. (2017). The community structure of deep-sea macrofauna associated with polymetallic nodules in the eastern part of the Clarion–Clipperton Fracture Zone. *Frontiers in Marine Science*, 4, 103.
- Drennan, R., Wiklund, H., Rabone, M., Georgieva, M. N., Dahlgren, T. G., & Glover, A. G. (2021). *Neanthes goodayi* sp. nov. (Annelida, Nereididae), a remarkable new annelid species living inside deep-sea polymetallic nodules. *European Journal of Taxonomy*, 760, 160–185.
- Etter, R. J., Boyle, E. E., Glazier, A., Jennings, R. M., Dutra, E., & Chase, M. R. (2011). Phylogeography of a pan-Atlantic abyssal protobranch bivalve: Implications for evolution in the deep Atlantic. *Molecular Ecology*, 20(4), 829–843.
- Feder, H. M., Jewett, S. C., & Blanchard, A. L. (2007). Southeastern Chukchi Sea (Alaska) macrobenthos. *Polar Biology*, 30(3), 261–275.
- Fine, P. V., & Kembel, S. W. (2011). Phylogenetic community structure and phylogenetic turnover across space and edaphic gradients in western Amazonian tree communities. *Ecography*, 34(4), 552–565.
- Gallagher, E. (1996). COMPAN 96 documentation: University of Massachusetts at Boston.
- Gillard, B., Purkiani, K., Chatzievangelou, D., Vink, A., Iversen, M. H., Thomsen, L., & Ackley, S. F. (2019). Physical and hydrodynamic properties of deep sea mining-generated, abyssal sediment plumes in the Clarion Clipperton Fracture Zone (eastern-central Pacific). *Elementa: Science of the Anthropocene*, 7. <https://doi.org/10.1525/elementa.343>
- Glover, A. G., Dahlgren, T. G., Wiklund, H., Mohrbeck, I., & Smith, C. R. (2016). An end-to-end DNA taxonomy methodology for benthic biodiversity survey in the Clarion–Clipperton Zone, central Pacific abyss. *Journal of Marine Science and Engineering*, 4(1), 2.
- Glover, A. G., Paterson, G., Bett, B., Gage, J., Sibuet, M., Shearer, M., & Hawkins, L. (2001). Patterns in polychaete abundance and diversity from the Madeira Abyssal Plain, northeast Atlantic. *Deep Sea Research Part I: Oceanographic Research Papers*, 48(1), 217–236.
- Glover, A. G., Smith, C., Paterson, G., Wilson, G., Hawkins, L., & Shearer, M. (2002). Polychaete species diversity in the central Pacific abyss: Local and regional patterns, and relationships with productivity. *Marine Ecology Progress Series*, 240, 157–170.
- Glover, A. G., Wiklund, H., Chen, C., & Dahlgren, T. G. (2018). Point of view: Managing a sustainable deep-sea 'blue economy' requires knowledge of what actually lives there. *Elife*, 7, e41319.
- Graham, C. H., & Fine, P. V. (2008). Phylogenetic beta diversity: Linking ecological and evolutionary processes across space in time. *Ecology Letters*, 11(12), 1265–1277.
- Graham, C. H., Parra, J. L., Rahbek, C., & McGuire, J. A. (2009). Phylogenetic structure in tropical hummingbird communities. *Proceedings of the National Academy of Sciences*, 106, 19673–19678.
- Guggolz, T., Meißner, K., Schwentner, M., Dahlgren, T. G., Wiklund, H., Bonifácio, P., & Brandt, A. (2020). High diversity and pan-oceanic distribution of deep-sea polychaetes: *Prionospio* and *Aurospio* (Annelida: Spionidae) in the Atlantic and Pacific Ocean. *Organisms Diversity & Evolution*, 20(2), 171–187.
- Hardy, S. M., Smith, C. R., & Thurnherr, A. M. (2015). Can the source–sink hypothesis explain macrofaunal abundance patterns in the abyss? A modelling test. *Proceedings of the Royal Society B: Biological Sciences*, 282(1808), 20150193.
- Hartman, O., & Fauchald, K. (1971). *Deep-water benthic Polychaetous annelids of New England to Bermuda and other North Atlantic areas*. Part II, 6, Los Angeles.
- Havermans, C., Sonet, G., d'Udekem d'Acoz, C., Nagy, Z. T., Martin, P., Brix, S., Riehl, T., Agrawal, S., & Held, C. (2013). Genetic and morphological divergences in the cosmopolitan deep-sea amphipod *Eurythenes gryllus* reveal a diverse abyss and a bipolar species. *PLoS One*, 8(9), e74218.
- Hauquier, F., Macheriotou, L., Bezerra, T. N., Egho, G., Martínez Arbizu, P., & Vanreusel, A. (2019). Distribution of free-living marine nematodes in the Clarion–Clipperton Zone: Implications for future deep-sea mining scenarios. *Biogeosciences*, 16(18), 3475–3489.
- Hellberg, M. E., Burton, R. S., Neigel, J. E., & Palumbi, S. R. (2002). Genetic assessment of connectivity among marine populations. *Bulletin of Marine Science*, 70(1), 273–290.
- Hessler, R. R., & Jumars, P. A. (1974). Abyssal community analysis from replicate box cores in the central North Pacific. *Deep-Sea Research*, 21(18), 209.
- Hilbig, B., Gerdes, D., & Montiel, A. (2006). Distribution patterns and biodiversity in polychaete communities of the Weddell Sea and Antarctic Peninsula area (Southern Ocean). *Journal of the Marine Biological Association of the United Kingdom*, 86(4), 711–725.
- Hohenlohe, P. A., Funk, W. C., & Rajora, O. P. (2021). Population genomics for wildlife conservation and management. *Molecular Ecology*, 30(1), 62–82.
- Huang, Y., Niu, B., Gao, Y., Fu, L., & Li, W. (2010). CD-HIT Suite: A web server for clustering and comparing biological sequences. *Bioinformatics*, 26(5), 680–682.

- International Seabed Authority. (2021). *Review of the implementation of the Environmental Management Plan for the Clarion-Clipperton Zone*. [https://isa.org.jm/files/documents/ISBA\\_26\\_C\\_43-2110787E.pdf](https://isa.org.jm/files/documents/ISBA_26_C_43-2110787E.pdf)
- Janssen, A., Kaiser, S., Meissner, K., Brenke, N., Menot, L., & Arbizu, P. M. (2015). A reverse taxonomic approach to assess macrofaunal distribution patterns in abyssal Pacific polymetallic nodule fields. *PLoS One*, 10(2), e0117790.
- Janssen, A., Stuckas, H., Vink, A., & Arbizu, P. M. (2019). Biogeography and population structure of predominant macrofaunal taxa (Annelida and Isopoda) in abyssal polymetallic nodule fields: Implications for conservation and management. *Marine Biodiversity*, 49(6), 2641–2658.
- Jones, D. O., Durden, J. M., Murphy, K., Gjerde, K. M., Gebicka, A., Colaço, A., Morato, T., Cuvelier, D., & Billett, D. S. (2019). Existing environmental management approaches relevant to deep-sea mining. *Marine Policy*, 103, 172–181.
- Jones, D. O. B., Kaiser, S., Sweetman, A. K., Smith, C. R., Menot, L., Vink, A., Trueblood, D., Greinert, J., Billett, D. S., Arbizu, P. M., Radziejewska, T., Singh, R., Ingole, B., Stratmann, T., Simon-Lledó, E., Durden, J. M., & Clark, M. R. (2017). Biological responses to disturbance from simulated deep-sea polymetallic nodule mining. *PLoS One*, 12(2), e0171750.
- Jones, D. O. B., Simon-Lledó, E., Amon, D. J., Bett, B. J., Caille, C., Clément, L., Connelly, D. P., Dahlgren, T. G., Durden, J. M., Drazen, J. C., Felden, J., Gates, A. R., Georgieva, M. N., Glover, A. G., Gooday, A. J., Hollingsworth, A. L., Horton, T., James, R. H., Jeffreys, R. M., ... Drazen, J. C. (2021). Environment, ecology, and potential effectiveness of an area protected from deep-sea mining (Clarion Clipperton Zone, abyssal Pacific). *Progress in Oceanography*, 197, 102653.
- Jumars, P. A., Dorgan, K. M., & Lindsay, S. M. (2015). Diet of worms emended: An update of polychaete feeding guilds. *Annual Review of Marine Science*, 7, 497–520.
- Kembel, S. W., Cowan, P. D., Helmus, M. R., Cornwell, W. K., Morlon, H., Ackerly, D. D., Blomberg, S. P., & Webb, C. O. (2010). Picante: R tools for integrating phylogenies and ecology. *Bioinformatics*, 26(11), 1463–1464.
- Knowlton, N. (1993). Sibling species in the sea. *Annual review of Ecology and Systematics*, 24(1), 189–216.
- Kojima, S., Murakami, S., Nemoto, S., Watanabe, H., Miyake, H., & Tsuchida, S. (2012). Genetic diversity and population structure of a vestimentiferan annelid *Lamellibrachia satsuma* in Japanese and northern Mariana waters. *Plankton and Benthos Research*, 7(3), 146–150.
- Kuhner, M. K. (2009). Coalescent genealogy samplers: Windows into population history. *Trends in Ecology & Evolution*, 24(2), 86–93.
- Legendre, P., & Borcard, D. (2018). Box-Cox-chord transformations for community composition data prior to beta diversity analysis. *Ecography*, 41(11), 1820–1824.
- Leigh, J. W., & Bryant, D. (2015). POPART: Full-feature software for haplotype network construction. *Methods in Ecology and Evolution*, 6(9), 1110–1116.
- Lejzerowicz, F., Gooday, A. J., Barrenechea Angeles, I., Cordier, T., Morard, R., Apothéloz-Perret-Gentil, L., Lins, L., Menot, L., Brandt, A., Levin, L. A., Arbizu, P. M., Smith, C. R., & Pawlowski, J. (2021). Eukaryotic biodiversity and spatial patterns in the Clarion-Clipperton zone and other abyssal regions: Insights from sediment DNA and RNA metabarcoding. *Frontiers in Marine Science*, 8, 536.
- Leprieur, F., Albouy, C., De Bortoli, J., Cowman, P. F., Bellwood, D. R., & Mouillot, D. (2012). Quantifying phylogenetic beta diversity: Distinguishing between 'true' turnover of lineages and phylogenetic diversity gradients. *PLoS One*, 7(8), e42760.
- Leprieur, F., Olden, J. D., Lek, S., & Brosse, S. (2009). Contrasting patterns and mechanisms of spatial turnover for native and exotic freshwater fish in Europe. *Journal of Biogeography*, 36(10), 1899–1912.
- Leprieur, F., Tedesco, P. A., Hugué, B., Beauchard, O., Dürr, H. H., Brosse, S., & Oberdorff, T. (2011). Partitioning global patterns of freshwater fish beta diversity reveals contrasting signatures of past climate changes. *Ecology Letters*, 14(4), 325–334.
- Lex, A., Gehlenborg, N., Strobel, H., Vuilleumot, R., & Pfister, H. (2014). UpSet: Visualization of intersecting sets. *IEEE transactions on Visualization and Computer Graphics*, 20(12), 1983–1992.
- Lodge, M., Johnson, D., Le Gurun, G., Wengler, M., Weaver, P., & Gunn, V. (2014). Seabed mining: International Seabed Authority environmental management plan for the Clarion-Clipperton Zone. A partnership approach. *Marine Policy*, 49, 66–72.
- Lozupone, C., & Knight, R. (2005). UniFrac: A new phylogenetic method for comparing microbial communities. *Applied and Environmental Microbiology*, 71(12), 8228–8235.
- Macheriotou, L., Rigaux, A., Derycke, S., & Vanreusel, A. (2020). Phylogenetic clustering and rarity imply risk of local species extinction in prospective deep-sea mining areas of the Clarion-Clipperton Fracture Zone. *Proceedings of the Royal Society B*, 287(1924), 20192666.
- McClain, C. R. (2021). The commonness of rarity in a deep-sea taxon. *Oikos*, 130(6), 863–878. <https://doi.org/10.1111/oik.07602>
- McClain, C. R., & Schlacher, T. A. (2015). On some hypotheses of diversity of animal life at great depths on the sea floor. *Marine Ecology*, 36(4), 849–872.
- McClain, C. R., Stegen, J. C., & Hurlbert, A. H. (2012). Dispersal, environmental niches and oceanic-scale turnover in deep-sea bivalves. *Proceedings of the Royal Society B: Biological Sciences*, 279(1735), 1993–2002.
- Menendez, A., James, R. H., Lichtschlag, A., Connelly, D., & Peel, K. (2019). Controls on the chemical composition of ferromanganese nodules in the Clarion-Clipperton Fracture Zone, eastern equatorial Pacific. *Marine Geology*, 409, 1–14.
- Menot, L. (2019). *ness: Hypergeometric standardization and probabilistic measures of similarity for community ecology*. R package version 0.1.0, Zenodo. In.
- Miljutina, M. A., Miljutin, D. M., Mahatma, R., & Galéron, J. (2010). Deep-sea nematode assemblages of the Clarion-Clipperton Nodule Province (tropical north-eastern Pacific). *Marine Biodiversity*, 40(1), 1–15.
- Mogollón, J. M., Mewes, K., & Kasten, S. (2016). Quantifying manganese and nitrogen cycle coupling in manganese-rich, organic carbon-starved marine sediments: Examples from the Clarion-Clipperton fracture zone. *Geophysical Research Letters*, 43(13), 7114–7123.
- Morlon, H., Schwiik, D. W., Bryant, J. A., Marquet, P. A., Rebelo, A. G., Tauss, C., Bohannan, B. J., & Green, J. L. (2011). Spatial patterns of phylogenetic diversity. *Ecology Letters*, 14(2), 141–149.
- Neal, L., Hardy, S. M., Smith, C., & Glover, A. (2011). Polychaete species diversity on the West Antarctic Peninsula deep continental shelf. *Marine Ecology Progress Series*, 428, 119–134.
- Neal, L., Wiklund, H., Gunton, L. M., Rabone, M., Bribiesca-Contreras, G., Dahlgren, T. G., & Glover, A. G. (2022). Abyssal fauna of polymetallic nodule exploration areas, eastern Clarion-Clipperton Zone, central Pacific Ocean: Amphinomidae and Euprosinidae (Annelida, Amphinomida). *ZooKeys*, 1137, 33–74.
- Neal, L., Wiklund, H., Rabone, M., Dahlgren, T. G., & Glover, A. G. (2022). Abyssal fauna of polymetallic nodule exploration areas, eastern Clarion-Clipperton Zone, central Pacific Ocean: Annelida: Spionidae and Poecilochaetidae. *Marine Biodiversity*, 52(5), 1–48.
- Oksanen, J., Blanchet, F. G., Kindt, R., Legendre, P., Minchin, P., O'Hara, R., Simpson, G. L., Solymos, P., Stevenes, M. H. H., & Wagner, H. (2013). *Community ecology package*. R package version, 2.0-2.
- Pape, E., Bezerra, T. N., Gheerardyn, H., Buydens, M., Kieswetter, A., & Vanreusel, A. (2021). Potential impacts of polymetallic nodule removal on deep-sea meiofauna. *Scientific Reports*, 11(1), 1–15.
- Paradis, E. (2010). pegas: An R package for population genetics with an integrated-modular approach. *Bioinformatics*, 26(3), 419–420.

- Paradis, E., & Schliep, K. (2019). ape 5.0: An environment for modern phylogenetics and evolutionary analyses in R. *Bioinformatics*, 35(3), 526–528.
- Pimm, S. L., Jenkins, C. N., Abell, R., Brooks, T. M., Gittleman, J. L., Joppa, L. N., Raven, P. H., Roberts, C. M., & Sexton, J. O. (2014). The biodiversity of species and their rates of extinction, distribution, and protection. *Science*, 344(6187), 1246–1252.
- Post, D. M. (2002). The long and short of food-chain length. *Trends in Ecology & Evolution*, 17(6), 269–277.
- Puillandre, N., Lambert, A., Brouillet, S., & Achaz, G. (2012). ABGD, Automatic Barcode Gap Discovery for primary species delimitation. *Molecular Ecology*, 21(8), 1864–1877.
- R Core Team. (2020). *R Software: Version 4.0.2*. R Foundation for Statistical Computing.
- Rex, M. A., & Etter, R. J. (2010). *Deep-sea biodiversity: Pattern and scale*. Harvard University Press.
- Rex, M. A., McClain, C. R., Johnson, N. A., Etter, R. J., Allen, J. A., Bouchet, P., & Warén, A. (2005). A source-sink hypothesis for abyssal biodiversity. *The American Naturalist*, 165(2), 163–178.
- Rouse, G., & Pleijel, F. (2001). *Polychaetes*. Oxford University Press.
- Schaff, T., Levin, L., Blair, N., DeMaster, D., Pope, R., & Boehme, S. (1992). Spatial heterogeneity of benthos on the Carolina continental slope: Large (100 km)-scale variation. *Marine Ecology-Progress Series*, 88, 143.
- Shen, T.-J., Chao, A., & Lin, C.-F. (2003). Predicting the number of new species in further taxonomic sampling. *Ecology*, 84(3), 798–804.
- Simon-Lledó, E., Bett, B. J., Huvenne, V. A., Schoening, T., Benoist, N. M., Jeffreys, R. M., Durden, J. M., & Jones, D. O. (2019). Megafaunal variation in the abyssal landscape of the Clarion Clipperton Zone. *Progress in Oceanography*, 170, 119–133.
- Sites, J. W., & Marshall, J. C. (2004). Operational criteria for delimiting species. *Annual Review of Ecology Evolution and Systematics*, 35, 199–227.
- Slatkin, M. (1987). Gene flow and the geographic structure of natural populations. *Science*, 236(4803), 787–792.
- Smith, C. R., De Leo, F. C., Bernardino, A. F., Sweetman, A. K., & Arbizu, P. M. (2008). Abyssal food limitation, ecosystem structure and climate change. *Trends in Ecology & Evolution*, 23(9), 518–528.
- Smith, C. R., Tunnicliffe, V., Colaço, A., Drazen, J. C., Gollner, S., Levin, L. A., Mestre, N. C., Metaxas, A., Molodtsova, T. N., Morato, T., Sweetman, A. K., Washburn, T., & Amon, D. J. (2020). Deep-sea misconceptions cause underestimation of seabed-mining impacts. *Trends in Ecology & Evolution*, 35(10), 853–857.
- Socolar, J. B., Gilroy, J. J., Kunin, W. E., & Edwards, D. P. (2016). How should beta-diversity inform biodiversity conservation? *Trends in Ecology & Evolution*, 31(1), 67–80.
- Stewart, E. C. D., Bribiesca-Contreras, G., Taboada, S., Wiklund, H., Ravara, A., Pape, E., De Smet, B., Neal, L., Cunha, M. R., Jones, D. O. B., Smith, C. R., Glover, A. G., & Dahlgren, T. G. (2023). Biodiversity, biogeography, and connectivity of polychaetes in the world's largest marine minerals exploration frontier, dryad, dataset. <https://doi.org/10.5061/dryad.c2fqz61ck>
- Taboada, S., Riesgo, A., Wiklund, H., Paterson, G. L., Koutsouveli, V., Santodomingo, N., Dale, A. C., Smith, C. R., Jones, D. O. B., Dahlgren, T. G., & Dahlgren, T. G. (2018). Implications of population connectivity studies for the design of marine protected areas in the deep sea: An example of a demosponge from the Clarion-Clipperton Zone. *Molecular Ecology*, 27(23), 4657–4679.
- Taylor, M. L., & Roterman, C. N. (2017). Invertebrate population genetics across Earth's largest habitat: The deep-sea floor. *Molecular Ecology*, 26(19), 4872–4896.
- van der Grient, J., & Rogers, A. (2021). Environmental influence on the distribution of polychaete families and feeding guilds in benthic communities of the Grand Banks and Flemish Cap (NW Atlantic). *Deep Sea Research Part I: Oceanographic Research Papers*, 171, 103498.
- Vanreusel, A., Hilario, A., Ribeiro, P. A., Menot, L., & Arbizu, P. M. (2016). Threatened by mining, polymetallic nodules are required to preserve abyssal epifauna. *Scientific Reports*, 6(1), 1–6.
- Volz, J. B., Haffert, L., Haeckel, M., Koschinsky, A., & Kasten, S. (2020). Impact of small-scale disturbances on geochemical conditions, biogeochemical processes and element fluxes in surface sediments of the eastern Clarion-Clipperton Zone, Pacific Ocean. *Biogeosciences*, 17(4), 1113–1131.
- Volz, J. B., Mogollón, J. M., Geibert, W., Arbizu, P. M., Koschinsky, A., & Kasten, S. (2018). Natural spatial variability of depositional conditions, biogeochemical processes and element fluxes in sediments of the eastern Clarion-Clipperton Zone, Pacific Ocean. *Deep Sea Research Part I: Oceanographic Research Papers*, 140, 159–172.
- Vrijenhoek, R. C. (2010). Genetic diversity and connectivity of deep-sea hydrothermal vent metapopulations. *Molecular Ecology*, 19(20), 4391–4411.
- Washburn, T. W., Jones, D. O., Wei, C.-L., & Smith, C. R. (2021). Environmental heterogeneity throughout the Clarion-Clipperton Zone and the potential representativity of the APEI network. *Frontiers in Marine Science*, 8, 319.
- Washburn, T. W., Menot, L., Bonifácio, P., Pape, E., Błażewicz, M., Bribiesca-Contreras, G., Dahlgren, T. G., Fukushima, T., Glover, A. G., Ju, S. J., Kaiser, S., Yu, O. H., & Smith, C. R. (2021). Patterns of macrofaunal biodiversity across the Clarion-Clipperton Zone: An area targeted for seabed mining. *Frontiers in Marine Science*, 8, 250.
- Washburn, T. W., Turner, P. J., Durden, J. M., Jones, D. O., Weaver, P., & Van Dover, C. L. (2019). Ecological risk assessment for deep-sea mining. *Ocean & Coastal Management*, 176, 24–39.
- Wedding, L. M., Friedlander, A. M., Kittinger, J. N., Watling, L., Gaines, S. D., Bennett, M., Hardy, S. M., & Smith, C. R. (2013). From principles to practice: A spatial approach to systematic conservation planning in the deep sea. *Proceedings of the Royal Society B: Biological Sciences*, 280(1773), 20131684.
- Whittaker, R. H. (1972). Evolution and measurement of species diversity. *Taxon*, 21(2–3), 213–251.
- Wiklund, H., Neal, L., Glover, A. G., Drennan, R., Rabone, M., & Dahlgren, T. G. (2019). Abyssal fauna of polymetallic nodule exploration areas, Eastern Clarion-Clipperton zone, central Pacific Ocean: Annelida: Capitellidae, Opheliidae, Scalibregmatidae, and Traviidae. *ZooKeys*, 883, 1–84.
- Wiklund, H., Rabone, M., Glover, A. G., Neal, L., Bribiesca-Contreras, G., Stewart, E. C. D., Drennan, R., Sherlock, E., & Dahlgren, T. G. (in press). Checklist of newly-vouchered polychaete taxa (Annelida) from the Clarion-Clipperton Zone, central Pacific Ocean based on morphology and genetic delimitation. *Biodiversity Data Journal*.
- Wiklund, H., Taylor, J. D., Dahlgren, T. G., Todt, C., Ikebe, C., Rabone, M., & Glover, A. G. (2017). Abyssal fauna of the UK-1 polymetallic nodule exploration area, Clarion-Clipperton Zone, central Pacific Ocean: Mollusca. *ZooKeys*, 707, 1–46.
- Williams, L., Matthee, C., & Simon, C. (2016). Dispersal and genetic structure of *Boccardia polybranchia* and *Polydora hoplura* (Annelida: Spionidae) in South Africa and their implications for aquaculture. *Aquaculture*, 465, 235–244.
- Winter, M., Devictor, V., & Schweiger, O. (2013). Phylogenetic diversity and nature conservation: Where are we? *Trends in Ecology & Evolution*, 28(4), 199–204.
- Zeng, C., Rowden, A. A., Clark, M. R., & Gardner, J. (2020). Species-specific genetic variation in response to deep-sea environmental variation amongst Vulnerable Marine Ecosystem indicator taxa. *Scientific Reports*, 10(1), 1–15.

## BIOSKETCH

**Eva C. D. Stewart** completed this work as part of her PhD study at the Natural History Museum (London) and the University of Southampton. This research was led by the [Deep-Sea Systematics and Ecology Research Group](#) (Natural History Museum) and the [Norwegian Research Centre NORCE](#). Our research groups study the natural history of the deep sea, with a particular focus on the origins, adaptive radiation, classification, biodiversity and ecological interactions of deep-sea animals. We work with academic colleagues, government funding agencies and industry to take part in deep-sea oceanographic research expeditions across the globe. We currently provide data and analyses on the biodiversity of the deep-sea in regions being explored for potential mineral extraction, such as the central Pacific. All of our work is underpinned by high-quality integrative DNA-based taxonomy with openly available archived samples and data.

Author contributions: ECDS led the analyses of the data, the interpretation of results, and the writing of the manuscript. GBC, AGG, and TGD conceived the initial study and TGD led the first analyses of the connectivity work. Polychaete morphological identifications were carried out by HW and LN, supported by analyses of molecular data including the species delimitation approach led by ECDS. ST, AR, EP, BDS, MRC, DOBJ, and CRS contributed data and specimens. All authors helped edit the manuscript and approved the final version.

## SUPPORTING INFORMATION

Additional supporting information can be found online in the Supporting Information section at the end of this article.

**How to cite this article:** Stewart, E. C. D., Bribiesca-Contreras, G., Taboada, S., Wiklund, H., Ravara, A., Pape, E., De Smet, B., Neal, L., Cunha, M. R., Jones, D. O. B., Smith, C. R., Glover, A. G., & Dahlgren, T. G. (2023). Biodiversity, biogeography, and connectivity of polychaetes in the world's largest marine minerals exploration frontier. *Diversity and Distributions*, 29, 727–747. <https://doi.org/10.1111/ddi.13690>