




National Institute for Health and Care Excellence (NICE) guidance on monitoring and management of Barrett's oesophagus and stage I oesophageal adenocarcinoma

Massimiliano di Pietro ¹, Nigel J Trudgill ^{2,3}, Melina Vasileiou,⁴ Gaius Longcroft-Wheaton ^{5,6}, Alexander W Phillips,⁷ James Gossage,⁸ Philip V Kaye,⁹ Kieran G Foley,¹⁰ Tom Crosby,¹¹ Sophie Nelson,¹² Helen Griffiths,¹³ Muksitur Rahman,⁴ Gill Ritchie,⁴ Amy Crisp,⁴ Stephen Deed,⁴ John N Primrose¹⁴

► Additional supplemental material is published online only. To view, please visit the journal online (<https://doi.org/10.1136/gutjnl-2023-331557>).

For numbered affiliations see end of article.

Correspondence to

Dr Massimiliano di Pietro, Department of Oncology, University of Cambridge, Cambridge, UK; md460@cam.ac.uk

Received 16 November 2023

Accepted 15 February 2024

ABSTRACT

Barrett's oesophagus is the only known precursor to oesophageal adenocarcinoma, a cancer with very poor prognosis. The main risk factors for Barrett's oesophagus are a history of gastro-oesophageal acid reflux symptoms and obesity. Men, smokers and those with a family history are also at increased risk. Progression from Barrett's oesophagus to cancer occurs via an intermediate stage, known as dysplasia. However, dysplasia and early cancer usually develop without any clinical signs, often in individuals whose symptoms are well controlled by acid suppressant medications; therefore, endoscopic surveillance is recommended to allow for early diagnosis and timely clinical intervention. Individuals with Barrett's oesophagus need to be fully informed about the implications of this diagnosis and the benefits and risks of monitoring strategies. Pharmacological treatments are recommended for control of symptoms, but not for chemoprevention. Dysplasia and stage 1 oesophageal adenocarcinoma have excellent prognoses, since they can be cured with endoscopic or surgical therapies. Endoscopic resection is the most accurate staging technique for early Barrett's-related oesophageal adenocarcinoma. Endoscopic ablation is effective and indicated to eradicate Barrett's oesophagus in patients with dysplasia. Future research should focus on improved accuracy for dysplasia detection via new technologies and providing more robust evidence to support pathways for follow-up and treatment.

EXECUTIVE SUMMARY

Barrett's oesophagus is defined as the adaptive metaplastic change of the oesophageal mucosa from the native multilayered squamous epithelium to a columnar-type epithelium, characteristically with intestinal-type differentiation.¹ This metaplastic change typically occurs in response to injury of the oesophageal mucosa due to gastro-oesophageal acid reflux. The reasons why only certain individuals with reflux oesophagitis develop Barrett's oesophagus are not fully understood, but based on available evidence it is plausible to hypothesise that this occurs within a predisposing genetic background, which is estimated to account for 35%

of the disease heritability.^{2,3} The molecular and cellular mechanisms leading to the development of Barrett's oesophagus are also debated. Several hypotheses have been proposed (including trans-differentiation from squamous to columnar cell type, origin from submucosal glands and circulating stem cells), but recent evidence from mouse models and human tissues indicates that the activation of progenitor cells located at the gastro-oesophageal junction upon injury leads to expansion of cells with columnar phenotype and colonisation of the lower oesophagus by the metaplastic epithelium.^{4,5}

The usual gold standard for diagnosis of Barrett's oesophagus is endoscopy, which reveals the extent of the metaplastic condition and allows for histopathological assessment of tissue biopsy samples. The criteria for a diagnosis of Barrett's oesophagus have been somewhat controversial in the recent past. It is important to consider that the elements in support of this diagnosis should align with the clinical significance of the disease, which essentially revolves around the cancer predisposition and the opportunities to prevent neoplastic transformation in individuals who might be a higher cancer risk compared with the general population.

There have been two areas of intense discussion about the diagnosis of Barrett's oesophagus. The first relates to the cell phenotype required for the pathological diagnosis and the second relates to the minimum extent of oesophageal involvement by the metaplastic epithelium to support an endoscopic diagnosis. Some specialist societies require the presence of intestinal metaplasia for a diagnosis of Barrett's oesophagus.^{6,7} The British Society of Gastroenterology has historically disagreed, recognising the possibility of a diagnosis of Barrett's oesophagus with gastric metaplasia only.⁸ It is well known that from a histopathologic perspective that Barrett's oesophagus is a mixture of different phenotypes, where the intestinal type cells can be more or less predominant.^{1,8} Although the NICE guideline committee did not disagree with the possibility of a non-intestinalised Barrett's oesophagus, it did recognise the evidence that individuals with suspected Barrett's oesophagus and intestinal metaplasia in biopsy specimens have higher cancer risk



© Author(s) (or their employer(s)) 2024. Re-use permitted under CC BY. Published by BMJ.

To cite: di Pietro M, Trudgill NJ, Vasileiou M, et al. Gut Epub ahead of print: [please include Day Month Year]. doi:10.1136/gutjnl-2023-331557

than those with gastric-type epithelium only.^{8,9} As for the length of metaplastic epithelium for an endoscopic diagnosis, retrospective evidence suggests that segments of metaplastic epithelium shorter than 1 cm are associated with a negligible cancer risk.¹⁰ Diagnostic criteria for Barrett's oesophagus are outside the scope of this guideline, but the committee were aware that the British Society of Gastroenterology recommends that a length of at least 1 cm is required for an endoscopic diagnosis of Barrett's oesophagus⁸ and this is also standard clinical practice outside the UK.^{6,7}

Once a diagnosis of Barrett's oesophagus is made based on the synthesis of endoscopic and histopathological data, it is important to ensure that this diagnosis is discussed with the patient and, if appropriate, a plan is agreed to monitor this and minimise the consequences of incidental cancer progression. The NICE guideline committee has systematically analysed the evidence on pharmacological, endoscopic and surgical interventions to prevent, monitor and treat individuals with Barrett's oesophagus and related early neoplasia and produced the following series of recommendations to support healthcare professionals managing individuals with this condition. The principal patient group are those found to have Barrett's oesophagus with or without dysplasia and those with early oesophageal adenocarcinoma limited to the mucosal or submucosal layers. The target users include gastroenterologists, GI surgeons, pathologists, endoscopists, specialist nurses and general practitioners. Finally, population-level screening was outside the scope of the guideline. These recommendations are listed below:

1.1 Information and support

1.1.1 Offer a clinical consultation to people with newly diagnosed Barrett's oesophagus to discuss the risk of cancer, endoscopic surveillance plans and symptom control.

1.1.2 Give the person verbal and written information about their diagnosis, available treatments and patient support groups. Give them time to consider this information when making decisions about their care.

1.1.3 After each surveillance procedure, provide the person with an endoscopy report that includes a lay summary of the findings and a reference to ongoing symptom control.

1.1.4 Follow the recommendations on communication and information in the NICE guidelines on patient experience in adult NHS services and shared decision-making.

1.2 Pharmacological interventions

Symptom control

1.2.1 Follow the recommendations on interventions for gastro-oesophageal reflux disease (GORD) in the NICE guideline on gastro-oesophageal reflux disease and dyspepsia in adults.

Preventing disease progression

1.2.2 Do not offer aspirin to people with Barrett's oesophagus to prevent progression to oesophageal dysplasia and cancer.

1.3 Endoscopic surveillance

1.3.1 Discuss the benefits and risks of endoscopic surveillance with the person diagnosed with Barrett's oesophagus.

1.3.2 Offer high-resolution white light endoscopy with Seattle biopsy protocol for surveillance of Barrett's oesophagus. Take into account the health of the person and ensure the benefits of surveillance outweigh the risks.

Frequency of endoscopic surveillance

1.3.3 Offer high resolution white light endoscopic surveillance with Seattle protocol biopsies:

- every 2 to 3 years for people with long-segment (≥ 3 cm) Barrett's oesophagus

- every 3 to 5 years to people with short-segment (< 3 cm) Barrett's oesophagus with intestinal metaplasia.

1.3.4 Assess a person's risk of cancer based on their age, sex, family history of oesophageal cancer and smoking history, and tailor the frequency of endoscopic surveillance accordingly.

1.3.5 Do not offer endoscopic surveillance to people with short-segment (< 3 cm) Barrett's oesophagus without intestinal metaplasia provided the diagnosis has been confirmed by two endoscopies.

1.4 Staging for suspected stage 1 oesophageal adenocarcinoma

1.4.1 Offer endoscopic resection for staging, to people with suspected stage 1 oesophageal adenocarcinoma.

1.4.2 Do not use CT before endoscopic resection for staging suspected T1 oesophageal adenocarcinoma.

1.4.3 Do not use endoscopic ultrasonography (EUS) before endoscopic resection for staging suspected T1a oesophageal adenocarcinoma.

1.4.4 Consider EUS for nodal staging, for people with suspected T1b oesophageal adenocarcinoma based on endoscopic appearances or diagnosed with T1b oesophageal adenocarcinoma based on histological examination of endoscopic resection specimens.

1.5 Managing Barrett's oesophagus with dysplasia

1.5.1 Offer endoscopic resection of visible oesophageal lesions as first-line treatment to people with high-grade dysplasia.

1.5.2 Offer endoscopic ablation of any residual Barrett's oesophagus to people with high-grade dysplasia after treatment with endoscopic resection.

1.5.3 Offer radiofrequency ablation to people with low-grade oesophageal dysplasia diagnosed from biopsy samples taken at two separate endoscopies. Two gastrointestinal pathologists should confirm the histological diagnosis.

1.5.4 Consider endoscopic surveillance at 6 monthly intervals with dose optimisation of acid-suppressant medication for people diagnosed with indefinite dysplasia of the oesophagus.

1.5.5 Offer endoscopic follow-up to people who have received endoscopic treatment for Barrett's oesophagus with dysplasia.

1.5.6 Follow the NICE interventional procedures guidance on endoscopic radiofrequency ablation for Barrett's oesophagus with low-grade dysplasia or no dysplasia and epithelial radiofrequency ablation for Barrett's oesophagus. <https://www.nice.org.uk/guidance/ipg496>

1.6 Managing stage 1 oesophageal adenocarcinoma

1.6.1 Offer a clinical consultation to people with stage 1 oesophageal adenocarcinoma to discuss and evaluate the suitability of treatment options, including endoscopic resection or oesophagectomy.

1.6.2 Offer endoscopic resection as first-line treatment to people with T1a oesophageal adenocarcinoma.

1.6.3 Offer endoscopic ablation of any residual Barrett's oesophagus to people with T1a oesophageal adenocarcinoma after treatment with endoscopic resection.

1.6.4 Offer endoscopic follow-up to people who have received endoscopic treatment for stage 1 oesophageal adenocarcinoma.

1.6.5 Offer oesophagectomy to people with T1b oesophageal adenocarcinoma who are fit for surgery and at high risk of cancer progression. For example, where there is:

- ▶ incomplete endoscopic resection
- ▶ evidence of lymphovascular invasion or deep submucosal invasion (more than 500 μm) on histological examination of endoscopic resection specimens.

1.7 Non-surgical treatment for T1b oesophageal adenocarcinoma

1.7.1 Consider radiotherapy (alone or in combination with chemotherapy) for people with T1b oesophageal adenocarcinoma at high risk of cancer progression (for example, incomplete endoscopic resection, or evidence of lymphovascular invasion or deep submucosal invasion (>500 μm) on histological examination of endoscopic resection specimens) and who are unfit for oesophagectomy.

1.7.2 Offer endoscopic follow-up to people who have received radiotherapy for T1b oesophageal adenocarcinoma.

1.8 Anti-reflux surgery

1.8.1 Do not offer anti-reflux surgery to people with Barrett's oesophagus to prevent progression to dysplasia or cancer.

1.8.2 Follow the recommendations on laparoscopic fundoplication for gastro-oesophageal reflux disease in the NICE guideline on gastro-oesophageal reflux disease and dyspepsia in adults.

2. OBJECTIVE

The objective of this guideline was to provide evidence-based recommendations for the management of patients with Barrett's oesophagus and stage 1 oesophageal adenocarcinoma. This included recommendations for information and support, pharmacological treatments, use of endoscopic, non-endoscopic and radiological tests for monitoring and staging of Barrett's and suspected stage 1 adenocarcinoma, and indications for endoscopic and surgical techniques to treat Barrett's and related neoplasia. This guideline did not review any evidence related to the diagnostic criteria for Barrett's oesophagus and management of adenocarcinoma stage 2 or higher.

3. NICE GUIDELINE PROCESSES AND METHODS

The guideline was developed using the methods described in the NICE guidelines manual.¹¹ NICE develops evidence-based guidelines based on the best available clinical and health economic evidence.

A scope was developed detailing the topic areas and clinical questions to be addressed within the guideline. A consultation to seek the views of stakeholders was held, and the scope was amended based on the stakeholder comments received.

A committee to develop the guideline was appointed through an open application process, consisting of clinicians with experience in management of Barrett's oesophagus and stage 1 oesophageal adenocarcinoma, as well as lay members. The committee included gastroenterologists, upper GI surgeons, radiologist, pathologist, oncologist, nurse endoscopist, general practitioners (GP), dietician and lay members.

Developing clinical questions and literature searches

Fourteen review questions were developed based on the key areas of the guideline scope (online supplementary table 1). A review protocol was developed for each question using a framework defining the different aspects making up the review question. The PICO framework was used to define: the population, the intervention, the comparator and the outcomes for intervention reviews. The population, index test, reference standard and target condition framework was used for diagnostic test

accuracy reviews, and population, setting and context for qualitative reviews. The frameworks guided the systematic literature searches undertaken for each review question, to identify relevant published clinical and health economic evidence and inform the recommendations made by the guideline committee.

Electronic databases were searched using relevant medical subject headings, free-text terms derived from the protocol frameworks and, where appropriate, study-type filters to prioritise the inclusion of evidence of the highest available quality. For intervention reviews, randomised controlled trials (RCTs) considered the most appropriate type of study to assess the effectiveness of interventions, were searched for using Medline, Embase, The Cochrane Library and Epistemonikos electronic databases. Where no evidence from RCTs was available, non-randomised studies were subsequently searched for and included as appropriate. For diagnostic accuracy reviews, a search was made for observational studies. Qualitative studies, questionnaires and surveys were searched for qualitative reviews using Medline, Embase, Current Nursing and Allied Health, Literature (CINAHL) and PsycINFO electronic databases.

Clinical evidence synthesis and grading of evidence

Evidence identified was assessed against the prespecified inclusion/exclusion criteria of each review protocol. Key information from studies selected for inclusion were tabulated in evidence tables, listing the study design, details of the population, intervention/index text, comparison or reference standard and results. Evidence tables also included critical appraisal ratings for each study, derived using the preferred study design checklist as specified in the NICE guidelines manual.¹¹

Quantitative outcome data were combined and meta-analysed where appropriate, or reported individually where variability in the studies did not allow pooling of data. These were then summarised in Grading of Recommendations Assessment, Development and Evaluation (GRADE) evidence profiles.¹² Meta-analyses were conducted using Cochrane Review Manager version 5.3 (ReVMan5) software.

Qualitative data were extracted in a narrative format and synthesised across studies using thematic analysis and presented as summary statements in GRADE CERQual (Confidence in Evidence from Reviews of Qualitative research) tables. Quantitative data, questionnaires and surveys related to the qualitative data were extracted in narrative format and included in the qualitative synthesis to help illustrate the themes emerging from the qualitative studies.

The quality of the evidence from quantitative studies was assessed using the GRADEpro software developed by the international GRADE working group. This is evaluated on an outcome level, taking into account individual study quality and meta-analysis results, based on the quality elements outlined in table 1.

Following the appraisal of each outcome, an overall quality grade was derived, and evidence was graded as either high, moderate, low or very low quality (table 2).

A similar approach was followed for qualitative evidence, where the GRADE-CERQual was used to assess the body of evidence synthesised under each review theme through a confidence rating representing the extent to which a review finding is an accurate representation of the phenomenon of interest. The level of confidence was categorised as high, moderate, low and very low that the review finding is a reasonable representation of the phenomenon of interest.

Table 1 Assessing the quality of the evidence

Quality element	Description
Risk of bias	Limitations in the study design and implementation might bias the estimates of the treatment effect. Major limitations in studies decrease the confidence in the estimate of the effect. Examples of such limitations are selection bias (often due to poor allocation concealment), performance and detection bias (often due to a lack of blinding of the patient, healthcare professional or assessor) and attrition bias (due to missing data causing systematic bias in the analysis).
Indirectness	Indirectness refers to differences in study population, intervention, comparator and outcomes between the available evidence and the review question.
Inconsistency	Inconsistency refers to an unexplained heterogeneity of effect estimates between studies in the same meta-analysis.
Imprecision	Results are imprecise when studies include relatively few patients and few events (or highly variable measures) and thus have wide confidence intervals around the estimate of the effect relative to clinically important thresholds. 95% confidence intervals denote the possible range of locations of the true population effect at a 95% probability, and so wide confidence intervals may denote a result that is consistent with conflicting interpretations (for example, a result may be consistent with both clinical benefit AND clinical harm) and thus be imprecise.
Publication bias	Publication bias is a systematic underestimate or overestimate of the underlying beneficial or harmful effect due to the selective publication of studies. A closely related phenomenon is where some papers fail to report an outcome that is inconclusive, thus leading to an overestimate of the effectiveness of that outcome.
Other issues	Sometimes randomisation might not adequately lead to group equivalence of confounders, and if so, this might lead to bias, which should be taken into account. Potential conflicts of interest, often caused by excessive pharmaceutical company involvement in the publication of a study, should also be noted.

Health economic evidence methods

The committee was required to make decisions based on the best available evidence of both clinical effectiveness and cost effectiveness. Health economic evidence was therefore sought relating to the review questions.

Health economists undertook a systematic review of the published economic literature. They began by identifying potentially relevant studies for each review question from the health economic search results by reviewing titles and abstracts. Full papers were obtained, then reviewed against prespecified inclusion and exclusion criteria.¹¹ The health economists then critically appraised relevant studies for applicability and methodological quality using economic evaluations checklists.¹¹

Key information about the studies' methods and results was extracted into health economic evidence reviews. NICE health economic evidence profile tables were used to summarise cost and cost-effectiveness estimates for the included health economic studies in each evidence review report. The health economic evidence profile showed an assessment of applicability and methodological quality for each economic study, with footnotes indicating the reasons for the assessment. A summary of costs and cost-effectiveness estimates for the base-case analysis, as well as information of the assessment of uncertainty in the analysis were also reported.

As well as reviewing the published health economic literature for each review question, areas for new analysis were agreed by the committee after formation of the review questions and consideration of the existing health economic evidence. The committee identified three review questions as high priority areas for original health economic modelling. However, the original cost-effectiveness analysis was not feasible in each area due to the lack of robust clinical evidence.

Developing recommendations

Decisions on whether a recommendation could be made were based on the committee's interpretation of the available evidence, taking into account the balance of benefits, harms and

costs between different courses of action. The net clinical benefit over harm (clinical effectiveness) was considered, focusing on the magnitude of the effect (or clinical importance), quality of evidence and amount of evidence available. The assessment of net clinical benefit was moderated by the importance placed on the outcomes, and the confidence the committee had in the evidence (evidence quality). The committee also assessed whether the clinical effectiveness justified any differences in costs between the alternative interventions.

For many questions the clinical and health economic evidence was of poor quality, or absent. Here, the committee debated whether a recommendation could be made based on its expert opinion. Considerations for making consensus-based recommendations included the balance between potential harms and benefits, the economic costs compared with the economic benefits, current practices, recommendations made in other relevant guidelines, patient preferences and equality issues.

For reviews where good evidence was lacking, the committee considered making recommendations for future research.

CONSULTATION

The draft guideline was published on the NICE website for consultation with stakeholders as part of the quality assurance and peer review of the document. After consultation the committee discussed the comments received from stakeholders and considered any changes needed to the guideline, and agreed the final wording of the recommendations.

Information and support

Six studies (four qualitative studies and two questionnaire studies reporting quantitative data) were included in the review about the information and support needs of people with Barrett's oesophagus^{13–18} (online supplemental table 2).

Qualitative evidence highlighted knowledge gaps and uncertainties at the time of diagnosis of Barrett's oesophagus. The committee agreed a clinical consultation should be offered

Table 2 GRADE quality ratings

Level	Description
High	Further research is very unlikely to change our confidence in the estimate of effect
Moderate	Further research is likely to have an important impact on our confidence in the estimate of effect and may change the estimate
Low	Further research is very likely to have an important impact on our confidence in the estimate of effect and is likely to change the estimate
Very low	Any estimate of effect is very uncertain

following diagnosis to provide information and support on the risk of progression to cancer and symptom control, and general information about endoscopic surveillance.

Providing information both verbally and in written form is helpful as information can be difficult to grasp at a single consultation, and written information will enable people to revisit the information when needed. This should include general information about the diagnosis of Barrett's oesophagus, available treatments and any patient support groups.

The use of complex medical terminology limits people's ability to understand information. The committee agreed it is important that each endoscopy report includes a lay summary of the findings and that this is given to the person.

The recommendations are in line with current practice and therefore are unlikely to have a substantial resource impact.

1.2 Pharmacological interventions

Two RCTs (online supplemental table 3) were included in the review^{19 20} to address the efficacy of proton pump inhibitors (PPIs) and aspirin for chemoprevention. Both the studies included people with low-grade dysplasia in Barrett's oesophagus.

This limited evidence, including the results from a large UK-based randomised trial (AspECT) showed that high-dose PPIs had no clinically important effect on outcomes (including all-cause mortality, progression to any grade of dysplasia or cancer, and serious adverse events) (figure 1A,B). The committee discussed that, although treatment with PPIs might potentially have chemopreventive effects against dysplasia and oesophageal adenocarcinoma compared with no treatment based on meta-analyses of retrospective studies,^{21 22} this would be difficult to demonstrate within a clinical trial setting because a placebo-controlled trial is not feasible as most people with Barrett's oesophagus need treatment with PPIs for control of acid reflux symptoms. There was consensus that the current evidence did not support a recommendation for the use of PPIs to prevent progression to dysplasia and oesophageal cancer. The committee emphasised that a higher dose of PPIs was not associated with a higher number of adverse events or increased all-cause mortality (figure 1C). They noted that the current evidence does not justify a recommendation for high-dose PPIs, but agreed, based on clinical experience, that acid-suppressant medication such as PPIs should be offered to all patients to control symptoms of gastro-oesophageal reflux; however, the dose should be reviewed regularly to assess for side effects and prevent potential long-term side effects such as bone fractures, infections and electrolyte disturbances.²³ Therefore, since the main goal for acid-suppressing treatment should be symptom control, the committee agreed to cross reference to the recommendations on managing gastro-oesophageal reflux disease in the NICE guideline on gastro-oesophageal reflux disease and dyspepsia in adults.

The committee agreed there was insufficient evidence from the AspECT trial to recommend aspirin to prevent progression to oesophageal dysplasia and cancer (figure 1D,E) and decided to make a 'do not offer' recommendation. Evidence from the AspECT trial showed that participants taking aspirin were more likely to have adverse events than those who were not, but the difference was small and not conclusive (figure 1F). The committee noted that this was in line with their clinical experience and knowledge that bleeding is more likely to be seen in people treated with aspirin. They agreed that the inconclusive results could be attributed to a protective effect from PPIs against bleeding both in the aspirin and no-aspirin study groups. Aspirin is not currently used to prevent progression to oesophageal

dysplasia and cancer. Therefore, the recommendations are not expected to result in a change in current practice or to have an impact on resources.

1.3 Endoscopic surveillance

We assessed the effectiveness of endoscopic surveillance on patients' outcome, including mortality, neoplastic progression, stage of disease and quality of life. In the absence of randomised controlled data, the committee used the evidence from seven observational (online supplemental table 4) studies.²⁴⁻³⁰ The quality of the evidence was rated as low or very low. One reason for this was serious or critical risk of bias for the majority of the outcomes. Serious or critical risk of bias resulted from selection bias in studies due to their observational design. Although three studies used some form of statistical adjustment to reduce potential bias, this is unlikely to have reduced selection bias to the levels expected in randomised studies. The evidence from two adjusted observational studies showed that endoscopic surveillance using high-resolution white light reduced disease-specific and all-cause mortality, lowering the risk by almost 30% compared with no surveillance (figure 2A). However, one study showed a contradictory result, demonstrating no difference in the odds of mortality between surveillance and no surveillance (figure 2B). One explanation for this contradiction was an uncertainty about the quality of surveillance performed in the latter study, where the adequacy of endoscopic surveillance was not reported. In the other studies that reported mortality, no attempts were made to reduce confounding factors, leading to critical risk of bias (figure 2C).

There were also four economic evaluations reporting results for endoscopic surveillance versus no surveillance.³¹⁻³⁴ One reported it being dominated by no surveillance, which the committee agreed was based on implausible health state utility scores and dated costs.³¹ One was based around surveillance according to the Seattle protocol and reported the cost per quality-adjusted life-year (QALY) as being greater than £20 000.³² The final two reported that it was cost effective at a cost per QALY threshold of £20 000. The first of these was based on a stratified population, whereas the second was based on a general population.^{33 34} The scheduling of surveillance in the latter study resembled UK guidelines.

Based on the clinical and cost-effectiveness evidence and considering the committee members' clinical experience, the committee agreed that endoscopic surveillance should be offered to people with Barrett's oesophagus, provided that the person's general health was adequate, and the benefits of surveillance outweighed the risks. The committee noted that this is the current standard of care for endoscopic surveillance for Barrett's oesophagus.

The committee agreed that the risk of complications of endoscopic surveillance should be considered on an individual basis because the frequency and consequences of complications will vary depending on a range of factors, including age, frailty and medical comorbidities. It was agreed that possible complications should be discussed with the person with Barrett's oesophagus.

In terms of diagnostic accuracy for Barrett's related neoplasia, evidence for electronic and conventional chromoendoscopy techniques (including narrow-band imaging, acetic acid, methylene blue, autofluorescence imaging, confocal endomicroscopy, artificial intelligence) as well as endoscopic brushing (WATS3D) was obtained from people with dysplasia (online supplemental table 5) and early-stage cancer.³⁵⁻⁴⁹ This means that these techniques have not been validated in an unselected population with

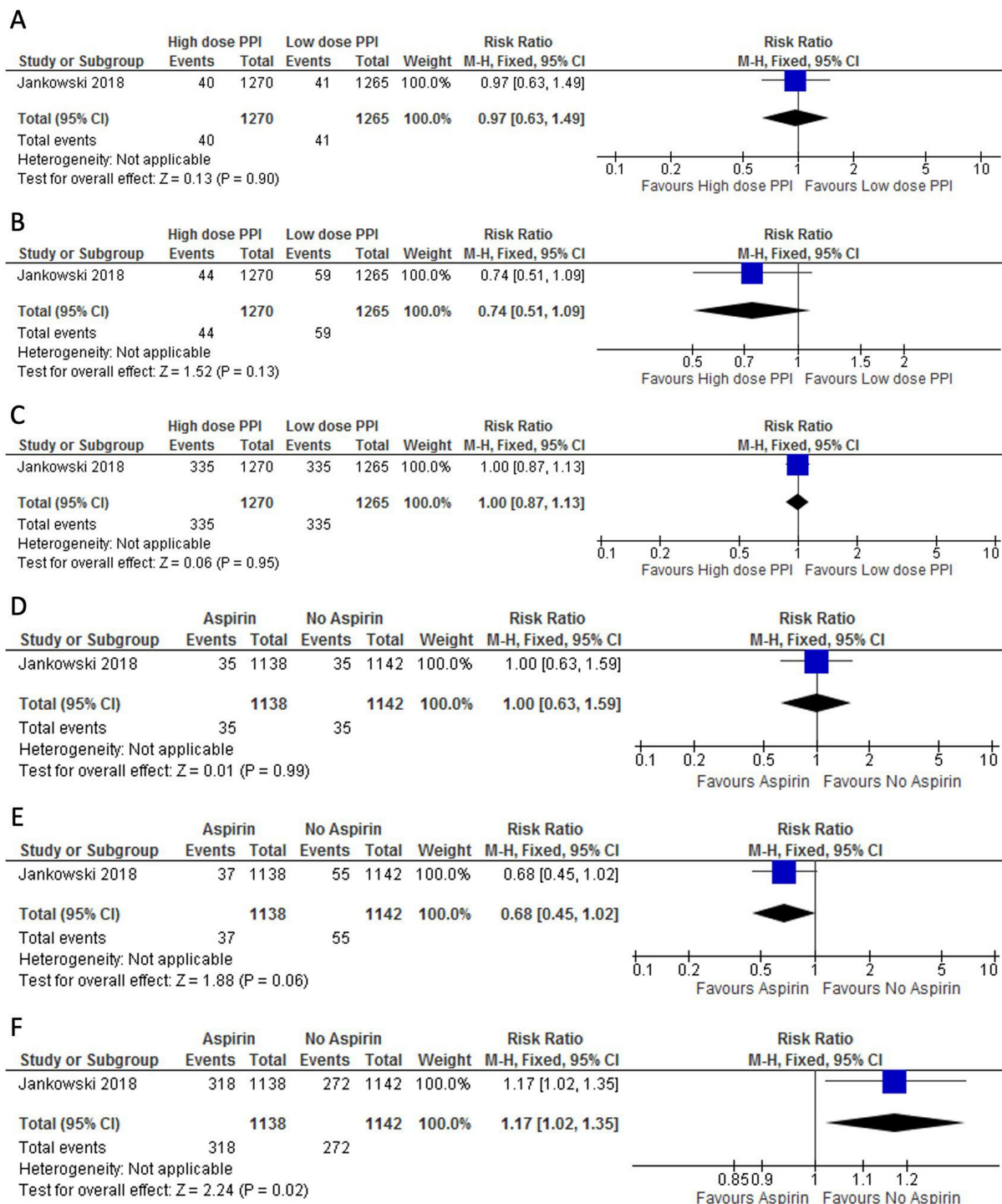


Figure 1 Evidence on pharmacological treatment for Barrett’s oesophagus. Forest plot of the association between pharmacological treatments with proton pump inhibitors (PPIs) (A–C) or aspirin (D–F) and development of oesophageal adenocarcinoma (A, D), high-grade dysplasia (B, E) or adverse events (C, F). Only one study could be included in the analysis.

Barrett’s oesophagus undergoing standard endoscopic surveillance and therefore could not be recommended for routine application. A recommendation for research was made to assess the effectiveness of these techniques for surveillance of Barrett’s oesophagus.

Frequency and duration of endoscopic surveillance

There was no evidence to support an optimal frequency for endoscopic surveillance as this will differ according to individual

risk factors. However, the committee agreed to make a recommendation for frequency of surveillance based on length of segment, in line with the British Society of Gastroenterology guidelines and current practice in the UK (endoscopy every 2-3 years for Barrett’s oesophagus 3cm or longer and every 3-5 years for Barrett’s oesophagus <3 cm).⁸

The committee agreed that having a range for the surveillance interval allows tailoring the frequency of surveillance to each person based on a clinical assessment of their risk of cancer,

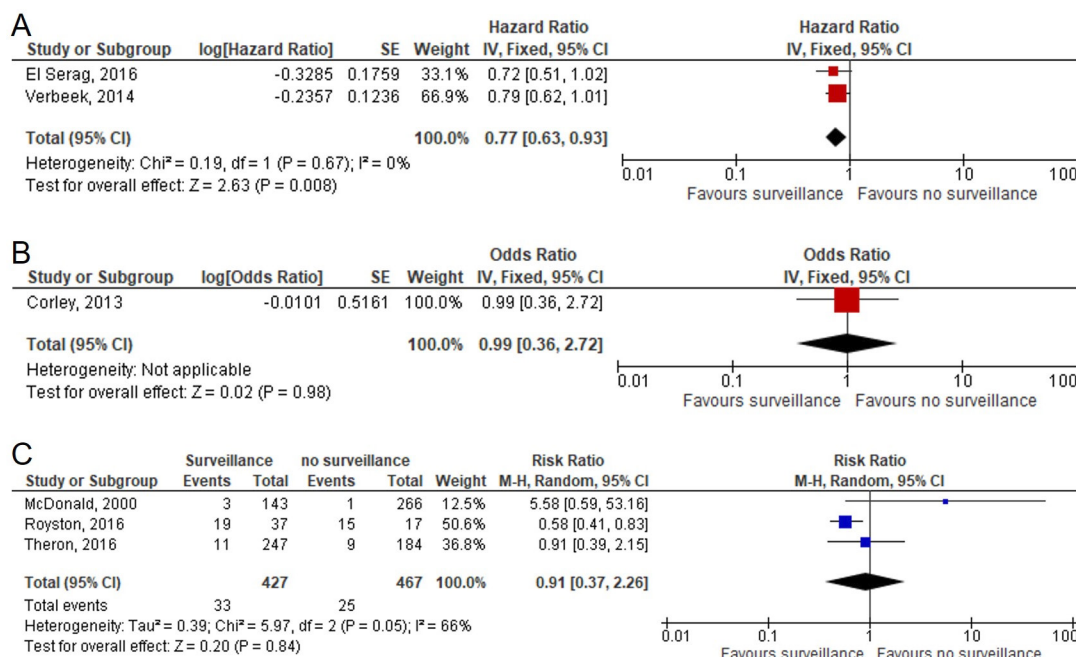


Figure 2 Effect of endoscopic surveillance on mortality by oesophageal adenocarcinoma. Forest plot of the association between endoscopic surveillance and mortality by oesophageal adenocarcinoma. (A) Adjusted studies with available data on the quality of surveillance. (B) Adjusted study with data on quality of endoscopy not available. (C) Unadjusted studies.

with length of segment, being the factor most closely linked to risk of cancer, but age, sex, family history of oesophageal cancer and smoking also being important.^{9 50 51} In clinical practice shorter intervals can be considered for patients perceived at higher risk—for example, those affected by very long segments of Barrett's oesophagus, those who are older, male and with a positive family history. Whereas longer intervals can be recommended for younger individuals and those with no additional risk factors of progression.

In line with current practice, there was consensus that people with short-segment (<3 cm) Barrett's oesophagus without intestinal metaplasia (confirmed at two endoscopies) should not be offered endoscopic surveillance because the risk of disease progression is low in this population and there are risks associated with endoscopic surveillance.^{9 52}

There was no evidence on the duration of endoscopic surveillance, and the committee agreed not to make a recommendation for this.

Endoscopic surveillance is widely used for monitoring people with Barrett's oesophagus. Adherence to the biopsy protocols requires additional procedure time beyond that of a standard endoscopy, but many services have already increased the time allocation for Barrett's surveillance and the overall impact on resources is not expected to be significant.

In the absence of clinical evidence for people with indefinite dysplasia of the oesophagus, the committee drew on their clinical experience to make a recommendation for this population. They emphasised that the risk of progression to high-grade oesophageal dysplasia or cancer is around three to five times higher than the risk in the non-dysplastic population,^{53 54} and therefore endoscopic surveillance at 6 months would be appropriate. The committee also noted, based on their clinical experience, that indefinite dysplasia is often linked to excessive inflammation of the oesophagus and, therefore dose escalation of acid-suppressant medication is appropriate. The committee agreed that if no definite dysplasia is confirmed at follow-up endoscopy,

the surveillance interval should return to the appropriate one for non-dysplastic Barrett's oesophagus.

People with low-grade dysplasia should be closely monitored at a 6-month time interval. See section 1.5 for discussion on the management of people with low-grade dysplasia.

The committee emphasised that evidence of clinical and molecular biomarkers associated with a greater risk of progression to dysplasia or cancer could inform setting appropriate intervals for endoscopic surveillance and agreed to make a recommendation for research on biomarkers.

Non-endoscopic surveillance techniques (no recommendations)

There was evidence of benefit of using cytosponge to diagnose dysplasia and cancer, but the quality was not sufficient to support its use at present. Cytosponge with laboratory biomarkers had high diagnostic accuracy in detecting high-grade dysplasia/cancer and any grade of dysplasia/cancer, but the sensitivity was not high enough to meet the clinical decision threshold.⁵⁵ The committee noted that cytosponge is more likely to be used in a lower-risk group. While agreeing that the results for diagnostic accuracy looked promising, these results were based on a single non-randomised retrospective study and therefore conclusions could not be drawn with certainty. The committee acknowledged that the use of cytosponge might be an option for patients not wanting endoscopy. Patients who have had cytosponge often prefer it⁵⁶ and it has the potential to reduce the pressure in endoscopy services if found to be effective. However, the committee emphasised that the current evidence does not support its implementation in current practice and agreed it could not be recommended at the current time. The committee also agreed it would not be appropriate to make a research recommendation because of ongoing trials, and the evidence could be reviewed once they have been completed.

Balloon brushing is an old technique that is not currently used in clinical practice.³⁷ Limited evidence on cytology obtained from balloon brushing showed it could detect oesophageal dysplasia and adenocarcinoma, but the committee agreed there was insufficient evidence to recommend its use in clinical practice.

There was a lack of evidence on other non-endoscopic surveillance techniques, such as Esophacap and Esoguard, and based on their clinical experience, the committee agreed it was not appropriate to recommend them.

1.4 Staging for suspected stage 1 oesophageal adenocarcinoma

Five studies (online supplemental table 6) were included which covered different imaging techniques (mini-probe EUS and radial EUS and CT).^{58–62}

The committee agreed, based on their clinical experience, that the diagnostic accuracy of CT is very low for detecting stage 1 oesophageal adenocarcinoma because of the resolution of the technique, due to the small size of T1 oesophageal adenocarcinoma. Evidence showed that CT had a high specificity (1.00) but a very low sensitivity (0.38) for N staging. Therefore, there was consensus that CT should not be used before endoscopic resection for staging suspected T1 oesophageal adenocarcinoma.

Evidence for the accuracy of mini-probe EUS in detecting T1a versus T1b tumours showed a high sensitivity (0.89) almost reaching the clinical threshold of 0.9, but a low specificity (0.27) that did not reach the threshold of 0.8 (online supplemental table 7). The committee noted that mini-probe EUS performed well in detecting T1a but not T1b tumours. The diagnostic accuracy of the mini-probe EUS for N staging was higher with a sensitivity of 0.75 and a specificity 0.97 that exceeded the clinical threshold. The diagnostic accuracy of conventional radial endoscopic ultrasonography (crEUS) for distinguishing T1a (vs T1b) tumours and T1b (vs T1a) in people with early cancer was moderately high, with measures of both sensitivity and specificity ranging between 0.64 and 0.78, but not high enough to reach the agreed thresholds for decisionmaking. However, the diagnostic accuracy for detecting N1 status was very high with sensitivity (1.00) and specificity (0.92) both exceeding clinical thresholds set for decision-making. For distinguishing T1b from T0 and T1a, in people with high-grade dysplasia or cancer, crEUS had a sensitivity of 0.56, suggesting that EUS is not reliable in differentiating T1a with T1b tumours. The committee confirmed based on their clinical experience that crEUS can be useful in people with suspected T1b based on endoscopic appearances to exclude T2 stage or higher, but noted that, since the current result was based on only five cases with T1b, there was imprecision in the effect estimate and the population was partially indirect due to the inclusion of a small number of people with T2 and T3 in the analysis. The committee agreed that EUS should not be used before endoscopic resection for staging suspected T1a oesophageal adenocarcinoma, as this carries a negligible risk of lymph node metastasis. EUS should be considered when an oesophageal lesion is suspected to be T1b cancer based on endoscopic appearances—for example, sessile lesions with significant luminal component (Paris 0–Is) or depressed lesions (Paris 0–IIc). It should also be considered for people with confirmed T1b oesophageal adenocarcinoma based on endoscopic resection staging, who have a significant risk of lymph node metastasis and might benefit from additional surgery or oncological treatment, such as radiotherapy alone or in combination with chemotherapy.

Based on their clinical experience, the committee also noted that PET, CT and EUS can all over-stage tumours, but EUS has the advantage of providing pathological confirmation for the presence of involved lymph nodes.

In the absence of definitive evidence on endoscopic staging techniques, the committee drew on their clinical experience to inform decision-making. They agreed that endoscopic resection should be offered to people with suspected stage 1 oesophageal adenocarcinoma as it is the most accurate staging technique and is the gold standard in current practice as recommended by the British Society of Gastroenterology guidelines.

These recommendations are in line with current practice and therefore will not have an impact on resources.

1.5 Managing Barrett's oesophagus with low-grade dysplasia

Clinical evidence from three RCTs (online supplemental table 8) and one observational study^{63–66} showed a clinically important benefit of radiofrequency ablation (RFA) compared with endoscopic surveillance across all outcomes examined in patients with Barrett's oesophagus and low-grade dysplasia, except for complications. RCT evidence showed a clinically important benefit of RFA over endoscopic surveillance for complete eradication of dysplasia and complete eradication of intestinal metaplasia (figure 3A,B).

Evidence from these studies showed that in people with confirmed low-grade oesophageal dysplasia, RFA protects from progression to high-grade dysplasia or cancer (figure 3C).

A cost-effectiveness analysis comparing RFA with endoscopic surveillance reported the cost per progression to neoplasia prevented.⁶⁷ The committee noted that it was difficult to decide on an acceptable threshold at which the cost per progression averted would represent value for money. A cost-utility analysis also compared RFA with endoscopic surveillance over 15 years and showed that RFA was cost effective at a threshold of £20 000 per QALY gained.⁶⁸

Based on their clinical experience and inclusion criteria for available RCTs, the committee emphasised that for RFA to be offered, evidence of low-grade dysplasia from biopsy results from two separate endoscopies and confirmation of the diagnosis on both sets of biopsies by two gastrointestinal pathologists should be present. They noted this was in line with current practice where RFA takes place in specialist centres by endoscopists with appropriate experience and would not be considered in cases where there is evidence of low-grade oesophageal dysplasia from biopsy results from only one endoscopy or where there is no confirmation by a second gastrointestinal pathologist.

There was no evidence to support use of other ablation techniques for treating low-grade dysplasia.

1.6 Managing high-grade dysplasia and stage 1 oesophageal adenocarcinoma

Eight studies (online supplemental table 9) (six RCTs, two observational studies) were included in the systematic review.^{66 69–75} The studies compared different endoscopic treatments. RCT evidence was identified on the following topics: Argon plasma coagulation (APC) compared with surveillance; endoscopic resection (ER) combined with APC compared with ER combined with RFA; ER using a cap with snare compared with multi-band mucosectomy; RFA compared with sham endoscopic procedure; endoscopic submucosal dissection (ESD) compared with endoscopic mucosal resection (EMR); focal ER combined with step-wise radical ER compared with focal ER combined with RFA.

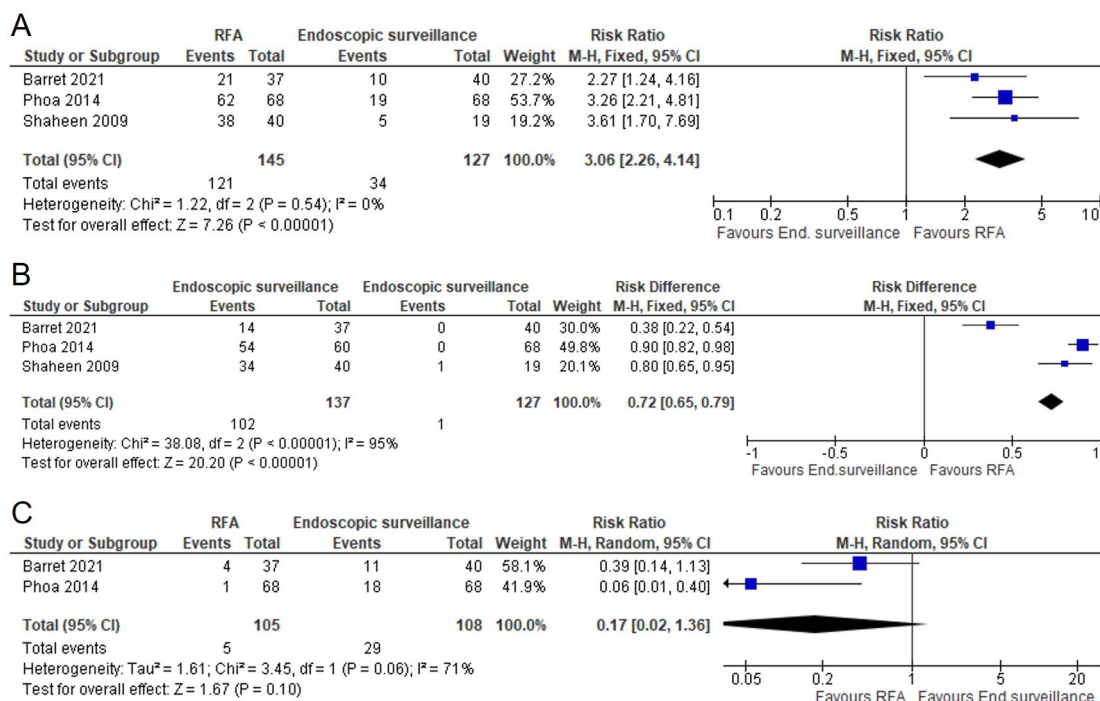


Figure 3 Effectiveness of radiofrequency ablation (RFA) in people with low-grade dysplasia. Forest plot assessing the effect of RFA in people with low-grade dysplasia on resolution of dysplasia (A), resolution of intestinal metaplasia (B) and progression to high-grade dysplasia or cancer (C).

Observational evidence was identified comparing EMR combined with RFA with RFA alone and RFA with cryotherapy.

The evidence showed that endoscopic treatment using a combination of endoscopic resection and endoscopic ablation for visible dysplastic lesions or endoscopic ablation alone for Barrett's oesophagus without a visible lesion is effective to treat people with high-grade dysplasia and prevent progression to adenocarcinoma.

In addition to the clinical studies, four cost-utility analyses were identified.^{68 76–78} They reported that at a threshold of £20 000 per QALY gained, EMR combined with RFA was cost effective versus endoscopic surveillance⁷⁷; EMR plus RFA plus surveillance, EMR plus APC plus surveillance and surgery were all cost effective versus no surveillance⁷⁸; RFA followed by endoscopic surveillance was cheaper and more effective than oesophagectomy⁷⁶; and RFA alone was cheaper and more effective than oesophagectomy.⁶⁸

Based on clinical experience the committee recommended that high-grade dysplasia should be endoscopically resected, when oesophageal lesions are visible at endoscopy, and the residual Barrett's oesophagus should be treated with endoscopic ablation.

There are two techniques for resection of dysplastic lesions in Barrett's oesophagus: EMR and ESD. There is no evidence of superiority of one technique over the other so the recommendation does not specify which to use.⁷⁵

The evidence indicated that both RFA and APC are effective in reducing the risk of recurrent dysplasia in people who have received an endoscopic resection for high-grade dysplasia. However, the committee noted that for a very long segment, Barrett's oesophagus RFA might be more practical than APC, which has a significantly smaller ablation area per treatment application than RFA. Given that there is no evidence of superiority of one ablation technique over the other, the committee agreed further research was needed to determine the most

effective endoscopic ablation technique to use and made a recommendation for research.

For treating stage 1 adenocarcinoma, six observational studies (online supplemental table 10) were found comparing the outcome of individuals treated with oesophagectomy or endoscopic resection.^{79–84} Overall, the evidence was difficult to evaluate given the lack of adjustment for selection bias in five out of the six observational studies. The single adjusted study by Prasad adjusted only for the outcomes of all-cause mortality and mortality related to oesophageal adenocarcinoma. This study showed no clear effect for all-cause mortality, but did demonstrate a very clear benefit for oesophagectomy in terms of mortality related to oesophageal adenocarcinoma. However, the committee noted the study's limitations because of the age of that study, and that an older technique had been used for many of the patients in the endoscopic therapy arm. The study had been carried out in 2007, and the committee agreed that because this was before the formalisation of quality standards in endoscopic treatment in 2010 this might have underestimated endoscopic treatment benefits. Therefore, the adjusted evidence was not considered as reliable as it might otherwise have been by the committee.

Overall, the quality of the evidence was limited but reflected the committee's clinical experience that endoscopic resection and oesophagectomy are equally effective, but oesophagectomy is associated with a higher incidence of serious adverse events (figure 4). There was a lack of evidence on how the two treatments affect quality of life, so in considering this, the committee drew on their own experience. As part of standard practice, a clinical consultation should be offered to the patient to discuss the treatment options and the advantages and disadvantages of both approaches. Endoscopic resection is less invasive and has fewer complications than oesophagectomy.

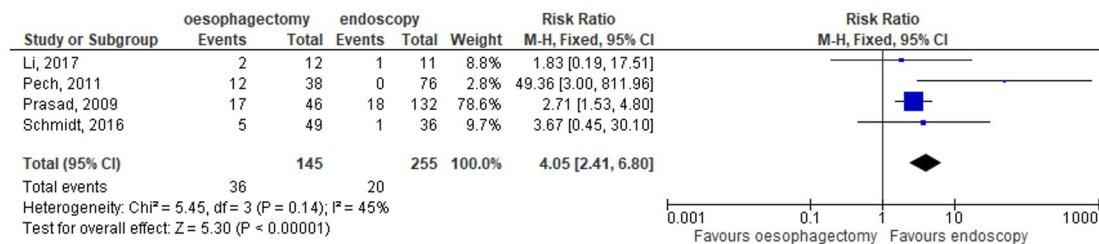


Figure 4 Major or serious complications of treatments for early oesophageal adenocarcinoma. Forest plot of the correlation of endoscopic or surgical treatment for high-grade dysplasia or oesophageal adenocarcinoma stage 1 and the occurrence of serious adverse events.

The committee agreed that even after successful endoscopic treatment there remains a risk of recurrence of Barrett's oesophagus and metachronous oesophageal neoplasia.^{85 86} Therefore, endoscopic treatment comes with a greater need for ongoing endoscopic surveillance, which could lead to anxiety about recurrence and possibly, impacts on the quality of life. This was reinforced by a lay committee member. Despite this, the committee agreed that endoscopic resection is still more likely to result in better quality of life post-treatment than oesophagectomy. Therefore, it should be offered as first-line treatment to people with T1a adenocarcinoma. The committee noted, based on their clinical experience, that ESD might offer an advantage in certain individuals with Barrett's oesophagus-related neoplasia (lesions larger than 15 mm, poorly lifting tumours and lesions at risk for submucosal invasion) but there was no reason to select it routinely over EMR for small slightly elevated lesions because ESD is a complex procedure and is associated with more complications.

There was evidence supporting the effectiveness of using endoscopic ablation following endoscopic resection to treat people with T1a adenocarcinoma of the oesophagus arising in Barrett's oesophagus. Similarly, to high-grade dysplasia, the evidence indicated that both RFA and APC are effective in reducing the risk of recurrent oesophageal neoplasia in people who have received an endoscopic resection for T1a adenocarcinoma. Given that there is no evidence of the superiority of one technique over the other, the committee agreed further research was needed to determine the most effective endoscopic ablation technique to use and made a recommendation for research.

Debate remains about the safest and most effective treatment for T1b oesophageal adenocarcinoma. Small cohort studies in patients with low-risk T1b adenocarcinoma (sm1 invasion, well-differentiated to moderately differentiated cancers and with no lymphovascular invasion) treated with endoscopic resection showed a rate of metastasis of approximately 2%.^{87 88} However, a Dutch nationwide study that analysed data from people treated surgically and endoscopically showed that the metastatic rate in low-risk T1b can be as high as 16% for cancers larger than 20mm.⁸⁹ A propensity-scored retrospective study based on a US National Cancer Database showed survival advantage for people with T1b adenocarcinoma treated with oesophagectomy compared with those treated with endoscopic resection only.⁹⁰ Overall, the uncertainty about optimal treatment for T1b oesophageal adenocarcinoma was a concern for the committee. In the absence of prospective and well-conducted studies, the committee decided to make a recommendation to offer oesophagectomy rather than just endoscopic resection for people with T1b oesophageal adenocarcinoma at high risk of cancer progression. This was based on their clinical experience that there is a greater risk of local recurrence in cases

of incomplete endoscopic resection and a high risk of lymph node metastasis in cases with deep submucosal invasion (>500 μ m) and lymphovascular invasion.⁸⁹ They decided not to make a recommendation for people with T1b at low risk of cancer progression as it was less clear which treatment option would be best, but made a recommendation for research to determine the effectiveness of endoscopic resection with or without adjuvant chemoradiotherapy and oesophagectomy for adults with T1b oesophageal adenocarcinoma based on pathological staging by endoscopic resection.

Follow-up after endoscopic treatment

In the absence of evidence comparing endoscopic and radiological follow-up as well as the optimal frequency of monitoring, the committee drew on their clinical experience to make a recommendation. They agreed that endoscopic follow-up is needed for people who have received endoscopic treatment for dysplastic Barrett's oesophagus and stage 1 oesophageal adenocarcinoma as the likelihood of recurrence is high. The committee noted this was in line with current practice.

Based on their clinical experience, the committee agreed that the frequency of follow-up should be based on the likelihood of recurrence. In the absence of evidence, the committee decided to make a recommendation for research to assess the optimal frequency and duration of endoscopic follow-up for people who have received endoscopic treatment for stage 1 oesophageal adenocarcinoma.

The current recommendations are in line with current practice and therefore will not have a resource impact.

1.7 Non-surgical treatment for T1b oesophageal adenocarcinoma

No evidence could be identified. In the absence of evidence to guide decision-making, the committee drew on their clinical experience to make a recommendation on non-surgical treatment for T1b oesophageal adenocarcinoma.

Using radiotherapy alone or in combination with chemotherapy to treat oesophageal adenocarcinoma is current practice.⁹¹

The committee agreed that radiotherapy alone or in combination with chemotherapy would be appropriate for people with T1b oesophageal adenocarcinoma at high risk of cancer progression, based on staging endoscopic resection, as it is likely to reduce the risk of recurrence. The decision for further non-surgical treatment should be based on patient factors, including risk features on pathological staging, fitness and patient preference. They noted that chemotherapy alone is not a definitive treatment.

1.8 Anti-reflux surgery

Two small RCTs (online supplemental table 11) comparing anti-reflux surgery (Nissen fundoplication) with esomeprazole were included^{92,93}; one RCT addressing the protocol outcome of adverse events, and one RCT on progression to high-grade dysplasia, dysplasia de novo (progression to any grade of dysplasia from non-dysplastic Barrett's oesophagus) and complications such as splenectomy, inability to belch or vomit and transient postoperative dysphagia.

The evidence showed a clinically important benefit of medical treatment for the outcome of complications and no clinically important difference for the outcomes of progression to high-grade dysplasia and treatment failure. The committee agreed that the findings were in line with their clinical experience that anti-reflux surgery does not offer any advantage over medical treatment with PPIs for progression to dysplasia or cancer. Therefore, the committee agreed, based on the current limited and low quality of evidence that anti-reflux surgery cannot be recommended for chemoprevention for people with Barrett's oesophagus.

The committee discussed that although PPIs are widely used in current practice for symptom control in people with Barrett's oesophagus, there are a number of people who express concerns about being on high-dose PPI medication long term, or who are intolerant to the medication. The committee agreed that anti-reflux surgery provides an alternative option to long-term medical treatment for this group of people.

One observational study was identified comparing anti-reflux surgery with medical treatment (esomeprazole) after RFA. The quality of the evidence was very low; therefore the committee had low confidence in the quality of the evidence as it came from an observational study with very wide confidence intervals and a very small number of participants. People who do not respond to RFA are sometimes referred for anti-reflux surgery. However, the committee noted that in such cases other ablation therapies, such as APC, could be considered instead of anti-reflux surgery.

1.9 Future research

We recognised that there are important topics for future research. In making research recommendations we considered known ongoing trials to avoid duplication of efforts and prioritised topics that are more likely to affect clinical management and have resource implications. We took into account areas where there is a historical lack of evidence in support of clinical guidelines. We have identified the following research questions that we hope the research community will address in the future to help manage patients with Barrett's oesophagus

- What is the diagnostic accuracy for early neoplasia of different endoscopic surveillance techniques, including high-resolution endoscopy and chromoendoscopy, in adults with Barrett's oesophagus?

- What is the usefulness of clinical and molecular biomarkers to inform the optimal frequency and duration of endoscopic surveillance for adults with Barrett's oesophagus?

- What is the effectiveness of endoscopic resection with or without adjuvant chemoradiotherapy and oesophagectomy for adults with T1b oesophageal adenocarcinoma?

- For adults with Barrett's oesophagus with dysplasia and stage 1 oesophageal adenocarcinoma, what is the effectiveness of different endoscopic ablation techniques alone or in combination with endoscopic resection?

- What is the optimal frequency and duration of endoscopic follow-up for patients who have received endoscopic treatment

for Barrett's oesophagus with dysplasia and stage 1 oesophageal adenocarcinoma?

Author affiliations

¹Early Cancer Institute, Department of Oncology, University of Cambridge, Cambridge, UK

²Department of Gastroenterology, Sandwell and West Birmingham Hospitals NHS Trust, West Bromwich, UK

³Institute of Cancer and Genomic Sciences, University of Birmingham, Birmingham, UK

⁴National Institute for Health and Care Excellence, London, UK

⁵Department of Gastroenterology, Portsmouth Hospitals NHS Trust, Portsmouth, UK

⁶Department of Pharmacy and Biomedical Sciences, University of Portsmouth, Portsmouth, UK

⁷Department of Surgery, Newcastle Upon Tyne Hospitals NHS Foundation Trust, Newcastle Upon Tyne, UK

⁸Department of Gastrointestinal Surgery, St Thomas' Hospital, London, UK

⁹Department of Histopathology, Nottingham University Hospitals NHS Trust, Nottingham, UK

¹⁰Division of Cancer and Genetics, Cardiff University, Cardiff, UK

¹¹Department of Clinical Oncology, Velindre University NHS Trust, Cardiff, UK

¹²Kenmore Medical Centre, Manchester University NHS Foundation Trust, Manchester, UK

¹³Powys Teaching Health Board, Bronllys, UK

¹⁴Department of Surgery, University of Southampton, Southampton, UK

Twitter Massimiliano di Pietro @massi_dipietro and Alexander W Phillips @alexwphillips7

Acknowledgements We would like to thank Maheen Qureshi, Mark Perry, Vimal Bedia for their help with systematic reviews. We are hugely grateful to Christopher Penniston and Stephen Brinkworth for their input as lay members of the panel to the discussion and formulation of recommendations.

Contributors MV performed the systematic reviews, MR performed health economic analyses, SD collected the evidence, AC coordinated the guidelines meetings, GR coordinated the guideline group, MdP was topic adviser, JNP was committee chair, MdP, NJT, MV, JNP and GR, wrote the manuscript, All authors participated in the guidelines meeting discussions, all authors approved the manuscript.

Funding The work leading to the guideline was funded by the National Institute for Health and Care Excellence. MdP received additional funding from the Medical Research Council and the Cancer Research UK Cambridge Centre (CTRQR-2021\100012).

Competing interests MdP participated in the BEST3 screening trial and received consultant fees from Medtronic. JNP was chair of the trial Steering committee of the AspECT trial. NJT participated in the AspECT trial.

Patient consent for publication Not applicable.

Ethics approval Not applicable.

Provenance and peer review Not commissioned; externally peer reviewed.

Supplemental material This content has been supplied by the author(s). It has not been vetted by BMJ Publishing Group Limited (BMJ) and may not have been peer-reviewed. Any opinions or recommendations discussed are solely those of the author(s) and are not endorsed by BMJ. BMJ disclaims all liability and responsibility arising from any reliance placed on the content. Where the content includes any translated material, BMJ does not warrant the accuracy and reliability of the translations (including but not limited to local regulations, clinical guidelines, terminology, drug names and drug dosages), and is not responsible for any error and/or omissions arising from translation and adaptation or otherwise.

Open access This is an open access article distributed in accordance with the Creative Commons Attribution 4.0 Unported (CC BY 4.0) license, which permits others to copy, redistribute, remix, transform and build upon this work for any purpose, provided the original work is properly cited, a link to the licence is given, and indication of whether changes were made. See: <https://creativecommons.org/licenses/by/4.0/>.

ORCID iDs

Massimiliano di Pietro <http://orcid.org/0000-0003-4866-7026>

Nigel J Trudgill <http://orcid.org/0000-0002-8040-8158>

Gaius Longcroft-Wheaton <http://orcid.org/0000-0001-9899-9948>

REFERENCES

- 1 Peters Y, Al-Kaabi A, Shaheen NJ, *et al.* Barrett oesophagus. *Nat Rev Dis Primers* 2019;5:35.

- 2 Ek WE, Levine DM, D'Amato M, *et al.* Germline genetic contributions to risk for esophageal adenocarcinoma, Barrett's esophagus, and gastroesophageal reflux. *J Natl Cancer Inst* 2013;105:1711–8.
- 3 Gharahkhani P, Fitzgerald RC, Vaughan TL, *et al.* Genome-wide association studies in oesophageal adenocarcinoma and Barrett's oesophagus: a large-scale meta-analysis. *Lancet Oncol* 2016;17:1363–73.
- 4 Nowicki-Osuch K, Zhuang L, Jammala S, *et al.* Molecular phenotyping reveals the identity of Barrett's esophagus and its malignant transition. *Science* 2021;373:760–7.
- 5 Wang X, Ouyang H, Yamamoto Y, *et al.* Residual embryonic cells as precursors of a Barrett's-like metaplasia. *Cell* 2011;145:1023–35.
- 6 Shaheen NJ, Falk GW, Iyer PG, *et al.* Guideline to practice: diagnosis and management of Barrett's esophagus: an updated ACG guideline. *Am J Gastroenterol* 2022;117:1177–80.
- 7 Weusten B, Bisschops R, Coron E, *et al.* Endoscopic management of Barrett's esophagus: European Society of Gastrointestinal Endoscopy (ESGE) position statement. *Endoscopy* 2017;49:191–8.
- 8 Fitzgerald RC, di Pietro M, Ragnath K, *et al.* British Society of Gastroenterology guidelines on the diagnosis and management of Barrett's oesophagus. *Gut* 2014;63:7–42.
- 9 Bhat S, Coleman HG, Yousef F, *et al.* Risk of malignant progression in Barrett's esophagus patients: results from a large population-based study. *J Natl Cancer Inst* 2011;103:1049–57.
- 10 Pohl H, Pech O, Arash H, *et al.* Length of Barrett's oesophagus and cancer risk: implications from a large sample of patients with early oesophageal adenocarcinoma. *Gut* 2016;65:196–201.
- 11 National Institute for Health and Care Excellence. Developing NICE guidelines: the manual. London; 2014.
- 12 Guyatt GH, Oxman AD, Vist GE, *et al.* GRADE: an emerging consensus on rating quality of evidence and strength of recommendations. *BMJ* 2008;336:924–6.
- 13 Arney J, Hinojosa-Lindsey M, Street RL, *et al.* Patient experiences with surveillance endoscopy: a qualitative study. *Dig Dis Sci* 2014;59:1378–85.
- 14 Bailey K. Barrett's oesophagus, part 3: a study into patients' perceptions of surveillance. *Gastrointestinal Nursing* 2009;7:34–42.
- 15 Britton J, Hamdy S, McLaughlin J, *et al.* Barrett's oesophagus: a qualitative study of patient burden, care delivery experience and follow-up needs. *Health Expect* 2019;22:21–33.
- 16 Cooper SC, El-agib A, Dar S, *et al.* Endoscopic surveillance for Barrett's oesophagus: the patients' perspective. *Eur J Gastroenterol Hepatol* 2009;21:850–4.
- 17 Gough MD, Gilliam AD, Stoddard CJ, *et al.* Barrett's esophagus: patient information and the internet. *Dis Esophagus* 2003;16:57–9.
- 18 Griffiths H, Davies R. Understanding Barrett's columnar lined oesophagus from the patients' perspective: qualitative analysis of semistructured interviews with patients. *Frontline Gastroenterol* 2011;2:168–75.
- 19 Babic Z, Bogdanovic Z, Dorosulic Z, *et al.* One year treatment of Barrett's oesophagus with proton pump inhibitors (a multi-center study). *Acta Clin Belg* 2015;70:408–13.
- 20 Jankowski JAZ, de Caestecker J, Love SB, *et al.* Esomeprazole and aspirin in Barrett's oesophagus (AspECT): a randomised factorial trial. *Lancet* 2018;392:400–8.
- 21 Chen Y, Sun C, Wu Y, *et al.* Do proton pump inhibitors prevent Barrett's esophagus progression to high-grade dysplasia and esophageal adenocarcinoma? An updated meta-analysis. *J Cancer Res Clin Oncol* 2021;147:2681–91.
- 22 Singh S, Garg SK, Singh PP, *et al.* Acid-suppressive medications and risk of oesophageal adenocarcinoma in patients with Barrett's oesophagus: a systematic review and meta-analysis. *Gut* 2014;63:1229–37.
- 23 Malfertheiner P, Kandulski A, Venerito M. Proton-pump inhibitors: understanding the complications and risks. *Nat Rev Gastroenterol Hepatol* 2017;14:697–710.
- 24 Corley DA, Mehtani K, Quesenberry C, *et al.* Impact of endoscopic surveillance on mortality from Barrett's esophagus-associated esophageal adenocarcinomas. *Gastroenterology* 2013;145:312–9.
- 25 El-Serag HB, Naik AD, Duan Z, *et al.* Surveillance endoscopy is associated with improved outcomes of oesophageal adenocarcinoma detected in patients with Barrett's oesophagus. *Gut* 2016;65:1252–60.
- 26 Macdonald CE, Wicks AC, Playford RJ. Final results from 10 year cohort of patients undergoing surveillance for Barrett's oesophagus: observational study. *BMJ* 2000;321:1252–5.
- 27 Roberts KJ, Harper E, Alderson D, *et al.* Long-term survival and cost analysis of an annual Barrett's surveillance programme. *Eur J Gastroenterol Hepatol* 2010;22:399–403.
- 28 Royston C, Caygill C, Charlett A, *et al.* The evolution and outcome of surveillance of Barrett's oesophagus over four decades in a UK district general hospital. *Eur J Gastroenterol Hepatol* 2016;28:1365–73.
- 29 Theron BT, Padmanabhan H, Aladin H, *et al.* The risk of oesophageal adenocarcinoma in a prospectively recruited Barrett's oesophagus cohort. *United European Gastroenterol J* 2016;4:754–61.
- 30 Verbeek RE, Leenders M, Ten Kate FJW, *et al.* Surveillance of Barrett's esophagus and mortality from esophageal adenocarcinoma: a population-based cohort study. *Am J Gastroenterol* 2014;109:1215–22.
- 31 Garside R, Pitt M, Somerville M, *et al.* Surveillance of Barrett's oesophagus: exploring the uncertainty through systematic review, expert workshop and economic modelling. *Health Technol Assess* 2006;10:1–142.
- 32 Lindblad M, Bright T, Schlothe A, *et al.* Toward more efficient surveillance of Barrett's esophagus: identification and exclusion of patients at low risk of cancer. *World J Surg* 2017;41:1023–34.
- 33 Gordon LG, Mayne GC, Hirst NG, *et al.* Cost-effectiveness of endoscopic surveillance of non-dysplastic Barrett's esophagus. *Gastrointest Endosc* 2014;79:242–56.
- 34 Omidvari A-H, Roumans CAM, Naber SK, *et al.* The impact of the policy-practice gap on costs and benefits of Barrett's esophagus management. *Am J Gastroenterol* 2020;115:1026–35.
- 35 Anandasabapathy S, Sontag S, Graham DY, *et al.* Computer-assisted brush-biopsy analysis for the detection of dysplasia in a high-risk Barrett's esophagus surveillance population. *Dig Dis Sci* 2011;56:761–6.
- 36 Bajbouj M, Vieth M, Rösch T, *et al.* Probe-based confocal laser endomicroscopy compared with standard four-quadrant biopsy for evaluation of neoplasia in Barrett's esophagus. *Endoscopy* 2010;42:435–40.
- 37 Canto MI, Anandasabapathy S, Brugge W, *et al.* In vivo endomicroscopy improves detection of Barrett's esophagus-related neoplasia: a multicenter international randomized controlled trial (with video). *Gastrointest Endosc* 2014;79:211–21.
- 38 Curvers WL, Alvarez Herrero L, Wallace MB, *et al.* Endoscopic tri-modal imaging is more effective than standard endoscopy in identifying early-stage neoplasia in Barrett's esophagus. *Gastroenterology* 2010;139:1106–14.
- 39 Ebigbo A, Mendel R, Rückert T, *et al.* Endoscopic prediction of submucosal invasion in Barrett's cancer with the use of artificial intelligence: a pilot study. *Endoscopy* 2021;53:878–83.
- 40 Egger K, Werner M, Meining A, *et al.* Biopsy surveillance is still necessary in patients with Barrett's oesophagus despite new endoscopic imaging techniques. *Gut* 2003;52:18–23.
- 41 Hashimoto R, Requa J, Dao T, *et al.* Artificial intelligence using convolutional neural networks for real-time detection of early esophageal neoplasia in Barrett's esophagus (with Video). *Gastrointest Endosc* 2020;91:1264–71.
- 42 Jayasekera C, Taylor ACF, Desmond PV, *et al.* Added value of narrow band imaging and confocal laser endomicroscopy in detecting Barrett's esophagus neoplasia. *Endoscopy* 2012;44:1089–95.
- 43 Longcroft-Wheaton G, Fogg C, Chedgy F, *et al.* A feasibility trial of acetic acid-targeted biopsies versus nontargeted quadrantic biopsies during Barrett's surveillance: the ABBA trial. *Endoscopy* 2020;52:29–36.
- 44 Ormezi N, Savas B, Coban S, *et al.* The usefulness of chromoendoscopy with methylene blue in Barrett's metaplasia and early esophageal carcinoma. *Surg Endosc* 2008;22:693–700.
- 45 Pascareno OD, Coroş MF, Pascareno G, *et al.* A preliminary feasibility study: narrow-band imaging targeted versus standard white light endoscopy non-targeted biopsies in a surveillance Barrett's population. *Dig Liver Dis* 2016;48:1048–53.
- 46 Ragnath K, Krasner N, Raman VS, *et al.* A randomized, prospective cross-over trial comparing methylene blue-directed biopsy and conventional random biopsy for detecting intestinal metaplasia and dysplasia in Barrett's esophagus. *Endoscopy* 2003;35:998–1003.
- 47 Sharma P, Hawes RH, Bansal A, *et al.* Standard endoscopy with random biopsies versus narrow band imaging targeted biopsies in Barrett's esophagus: a prospective, International, randomised controlled trial. *Gut* 2013;62:15–21.
- 48 Sharma P, Meining AR, Coron E, *et al.* Real-time increased detection of neoplastic tissue in Barrett's esophagus with probe-based confocal laser endomicroscopy: final results of an international multicenter, prospective, randomized, controlled trial. *Gastrointest Endosc* 2011;74:465–72.
- 49 Vithayathil M, Modolell I, Ortiz-Fernandez-Sordo J, *et al.* Image-enhanced endoscopy and molecular biomarkers vs Seattle protocol to diagnose dysplasia in Barrett's esophagus. *Clin Gastroenterol Hepatol* 2022;20:2514–23.
- 50 Parasa S, Vennalaganti S, Gaddam S, *et al.* Development and validation of a model to determine risk of progression of Barrett's esophagus to neoplasia. *Gastroenterology* 2018;154:1282–9.
- 51 Klaver E, Bureo Gonzalez A, Mostafavi N, *et al.* Barrett's esophagus surveillance in a prospective Dutch multi-center community-based cohort of 985 patients demonstrates low risk of neoplastic progression. *United European Gastroenterol J* 2021;9:929–37.
- 52 Black EL, Ococks E, Devonshire G, *et al.* Understanding the malignant potential of gastric metaplasia of the oesophagus and its relevance to Barrett's oesophagus surveillance: individual-level data analysis. *Gut* 2023.
- 53 Kopczynska M, Ratcliffe E, Yalamanchili H, *et al.* Barrett's oesophagus with indefinite for dysplasia shows high rates of prevalent and incident neoplasia in a UK multicentre cohort. *J Clin Pathol* 2023;76:847–54.
- 54 Phillips R, Januszewicz W, Pilonis ND, *et al.* The risk of neoplasia in patients with Barrett's esophagus indefinite for dysplasia: a multicenter cohort study. *Gastrointest Endosc* 2021;94:263–70.
- 55 Pilonis ND, Killcoyne S, Tan WK, *et al.* Use of a cytosponge biomarker panel to prioritize endoscopic Barrett's oesophagus surveillance: a cross-sectional study followed by a real-world prospective pilot. *Lancet Oncol* 2022;23:270–8.
- 56 Ross-Innes CS, DeBiram-Beecham I, O'Donovan M, *et al.* Evaluation of a minimally invasive cell sampling device coupled with assessment of trefoil factor 3 expression

- for diagnosing Barrett's esophagus: a multi-center case-control study. *PLoS Med* 2015;12.
- 57 Falk GW, Chittajallu R, Goldblum JR, *et al.* Surveillance of patients with Barrett's esophagus for dysplasia and cancer with balloon cytology. *Gastroenterology* 1997;112:1787–97.
- 58 Cen P, Hofstetter WL, Lee JH, *et al.* Value of endoscopic ultrasound staging in conjunction with the evaluation of lymphovascular invasion in identifying low-risk esophageal carcinoma. *Cancer* 2008;112:503–10.
- 59 Pech O, Günter E, Dusemund F, *et al.* Value of high-frequency miniprobe and conventional radial endoscopic ultrasound in the staging of early Barrett's carcinoma. *Endoscopy* 2010;42:98–103.
- 60 Pech O, May A, Günter E, *et al.* The impact of endoscopic ultrasound and computed tomography on the TNM staging of early cancer in Barrett's esophagus. *Am J Gastroenterol* 2006;101:2223–9.
- 61 Scotinoti IA, Kochman ML, Lewis JD, *et al.* Accuracy of EUS in the evaluation of Barrett's esophagus and high-grade dysplasia or Intramucosal carcinoma. *Gastrointest Endosc* 2001;54:689–96.
- 62 Thomas T, Gilbert D, Kaye PV, *et al.* High-resolution endoscopy and endoscopic ultrasound for evaluation of early neoplasia in Barrett's esophagus. *Surg Endosc* 2010;24:1110–6.
- 63 Barret M, Pioche M, Terris B, *et al.* Endoscopic radiofrequency ablation or surveillance in patients with Barrett's oesophagus with confirmed low-grade dysplasia: a multicentre randomised trial. *Gut* 2021;70:1014–22.
- 64 Phoa KN, van Vilsteren FGI, Weusten BLAM, *et al.* Radiofrequency ablation vs endoscopic surveillance for patients with Barrett esophagus and low-grade dysplasia: a randomized clinical trial. *JAMA* 2014;311:1209–17.
- 65 Pouw RE, Klaver E, Phoa KN, *et al.* Radiofrequency ablation for low-grade dysplasia in Barrett's esophagus: long-term outcome of a randomized trial. *Gastrointest Endosc* 2020;92:569–74.
- 66 Shaheen NJ, Sharma P, Overholt BF, *et al.* Radiofrequency ablation in Barrett's esophagus with dysplasia. *N Engl J Med* 2009;360:2277–88.
- 67 Phoa KN, Rosmolen WD, Weusten B, *et al.* The cost-effectiveness of radiofrequency ablation for Barrett's esophagus with low-grade dysplasia: results from a randomized controlled trial (SURF trial). *Gastrointest Endosc* 2017;86:120–9.
- 68 Esteban JM, González-Carro P, Gornals JB, *et al.* Economic evaluation of endoscopic radiofrequency ablation for the treatment of dysplastic Barrett's esophagus in Spain. *Rev Esp Enferm Dig* 2018;110:145–54.
- 69 Li N, Pasricha S, Bulsiewicz WJ, *et al.* Effects of preceding endoscopic mucosal resection on the efficacy and safety of radiofrequency ablation for treatment of Barrett's esophagus: results from the United States radiofrequency ablation registry. *Dis Esophagus* 2016;29:537–43.
- 70 Manner H, Rabenstein T, Pech O, *et al.* Ablation of residual Barrett's epithelium after endoscopic resection: a randomized long-term follow-up study of argon plasma coagulation vs. surveillance (APE study). *Endoscopy* 2014;46:6–12.
- 71 Peerally MF, Bhandari P, Raguath K, *et al.* Radiofrequency ablation compared with argon plasma coagulation after endoscopic resection of high-grade dysplasia or stage T1 adenocarcinoma in Barrett's esophagus: a randomized pilot study (BRIDE). *Gastrointest Endosc* 2019;89:680–9.
- 72 Pouw RE, van Vilsteren FGI, Peters FP, *et al.* Randomized trial on endoscopic resection-cap versus multiband mucosectomy for piecemeal endoscopic resection of early Barrett's neoplasia. *Gastrointest Endosc* 2011;74:35–43.
- 73 Terheggen G, Horn EM, Vieth M, *et al.* A randomised trial of endoscopic submucosal dissection versus endoscopic mucosal resection for early Barrett's neoplasia. *Gut* 2017;66:783–93.
- 74 Thota PN, Arora Z, Dumot JA, *et al.* Cryotherapy and radiofrequency ablation for eradication of Barrett's esophagus with dysplasia or Intramucosal cancer. *Dig Dis Sci* 2018;63:1311–9.
- 75 van Vilsteren FGI, Pouw RE, Seewald S, *et al.* Stepwise radical endoscopic resection versus radiofrequency ablation for Barrett's oesophagus with high-grade dysplasia or early cancer: a multicentre randomised trial. *Gut* 2011;60:765–73.
- 76 Boger PC, Turner D, Roderick P, *et al.* A UK-based cost-utility analysis of radiofrequency ablation or oesophagectomy for the management of high-grade dysplasia in Barrett's oesophagus. *Aliment Pharmacol Ther* 2010;32:1332–42.
- 77 Filby A, Taylor M, Lipman G, *et al.* Cost-effectiveness analysis of endoscopic eradication therapy for treatment of high-grade dysplasia in Barrett's esophagus. *J Comp Eff Res* 2017;6:425–36.
- 78 National Institute for Health and Clinical Excellence. Barrett's Oesophagus: Ablative therapy; 2010.
- 79 Li C, Yamashita DT, Hawel JD, *et al.* Endoscopic mucosal resection versus esophagectomy for Intramucosal adenocarcinoma in the setting of Barrett's esophagus. *Surg Endosc* 2017;31:4211–6.
- 80 Pacifico RJ, Wang KK, Wongkeesong LM, *et al.* Combined endoscopic mucosal resection and photodynamic therapy versus esophagectomy for management of early adenocarcinoma in Barrett's esophagus. *Clin Gastroenterol Hepatol* 2003;1:252–7.
- 81 Pech O, Bollschweiler E, Manner H, *et al.* Comparison between endoscopic and surgical resection of mucosal esophageal adenocarcinoma in Barrett's esophagus at two high-volume centers. *Ann Surg* 2011;254:67–72.
- 82 Prasad GA, Wu TT, Wigle DA, *et al.* Endoscopic and surgical treatment of mucosal (T1A) esophageal adenocarcinoma in Barrett's esophagus. *Gastroenterology* 2009;137:815–23.
- 83 Schmidt HM, Mohiuddin K, Bodnar AM, *et al.* Multidisciplinary treatment of T1A adenocarcinoma in Barrett's esophagus: contemporary comparison of endoscopic and surgical treatment in physiologically fit patients. *Surg Endosc* 2016;30:3391–401.
- 84 Zehetner J, DeMeester SR, Hagen JA, *et al.* Endoscopic resection and ablation versus esophagectomy for high-grade dysplasia and Intramucosal adenocarcinoma. *J Thorac Cardiovasc Surg* 2011;141:39–47.
- 85 Pech O, May A, Manner H, *et al.* Long-term efficacy and safety of endoscopic resection for patients with mucosal adenocarcinoma of the esophagus. *Gastroenterology* 2014;146:652–60.
- 86 Sami SS, Ravindran A, Kahn A, *et al.* Timeline and location of recurrence following successful ablation in Barrett's oesophagus: an international multicentre study. *Gut* 2019;68:1379–85.
- 87 Manner H, Pech O, Heldmann Y, *et al.* The frequency of lymph node metastasis in early-stage adenocarcinoma of the esophagus with incipient submucosal invasion (Pt1B Sm1) depending on histological risk patterns. *Surg Endosc* 2015;29:1888–96.
- 88 Nieuwenhuis EA, van Munster SN, Meijer SL, *et al.* Analysis of metastases rates during follow-up after endoscopic resection of early 'high-risk' esophageal adenocarcinoma. *Gastrointest Endosc* 2022;96:237–47.
- 89 Gotink AW, van de Ven SEM, Ten Kate FJC, *et al.* Individual risk calculator to predict lymph node metastases in patients with submucosal (T1B) esophageal adenocarcinoma: a multicenter cohort study. *Endoscopy* 2022;54:109–17.
- 90 Swanson J, Littau M, Tonelli C, *et al.* The role of endoscopic resection in early-stage esophageal adenocarcinoma: esophagectomy is associated with improved survival in patients presenting with clinical stage T1Bn0 disease. *Surgery* 2023;173:693–701.
- 91 Obermannová R, Alsina M, Cervantes A, *et al.* Oesophageal cancer: ESMO clinical practice guideline for diagnosis, treatment and follow-up. *Ann Oncol* 2022;33:992–1004.
- 92 Attwood SE, Lundell L, Hatlebakk JG, *et al.* Medical or surgical management of GERD patients with Barrett's esophagus: the LOTUS trial 3-year experience. *J Gastrointest Surg* 2008;12:1646–54.
- 93 Parrilla P, Martínez de Haro LF, Ortiz A, *et al.* Long-term results of a randomized prospective study comparing medical and surgical treatment of Barrett's esophagus. *Ann Surg* 2003;237:291–8.

Supplementary Tables, di Pietro et al, National Institute for Health and Care Excellence (NICE) guidance on monitoring and management of Barrett's oesophagus and stage I oesophageal adenocarcinoma

Supplementary Table 1: list of review questions

Type of review	Review questions	Outcomes
Qualitative	What information and support should be provided to patients (or carers or families) who are having or considering follow-up or treatment for Barrett's oesophagus or stage 1 adenocarcinoma?	<ul style="list-style-type: none"> • Themes emerging from qualitative data (themes were derived from the evidence identified for this review and not pre-specified)
Intervention	For adults with Barrett's oesophagus, what is the clinical and cost effectiveness of pharmacological interventions (such as antacids, aspirin, H2 receptor antagonists, proton pump inhibitors) in reducing progression to dysplasia or cancer?	<ul style="list-style-type: none"> • Mortality (including all-cause mortality) • Health related quality of life • Progression from non-dysplastic to low grade dysplasia • Progression to any grade of dysplasia • Progression to high grade dysplasia or cancer • Adverse events (e.g., bleeding)
Intervention	For adults with Barrett's oesophagus, what is the clinical and cost effectiveness of endoscopic surveillance using white light endoscopy?	<ul style="list-style-type: none"> • Mortality • Health related quality of life (validated scores) • Progression of dysplasia • Progression to cancer and stage • Adverse events (such as sedation related, bleeding, pain, perforation)
Diagnostic test accuracy	What is the diagnostic accuracy of different endoscopic surveillance techniques including high resolution endoscopy and chromoendoscopy?	<ul style="list-style-type: none"> • Detection of progression of dysplasia • Sensitivity • Specificity

Supplementary Tables, di Pietro et al, National Institute for Health and Care Excellence (NICE) guidance on monitoring and management of Barrett's oesophagus and stage I oesophageal adenocarcinoma

Type of review	Review questions	Outcomes
		<ul style="list-style-type: none"> Data to calculate 2x2 tables to calculate sensitivity and specificity (number of true positives, true negatives, false positives and false negatives).
Intervention	For adults with Barrett's oesophagus, what is the clinical and cost effectiveness of different non-endoscopic surveillance techniques, including cytosponge?	<ul style="list-style-type: none"> Detection of any grade of dysplasia Detection of early cancer or high-grade dysplasia Health related quality of life Adverse events (bleeding, perforation, pain) Rate of inadequate sampling (requiring repeat or conversion) Detection of progression to any grade of dysplasia
Diagnostic test accuracy	What is the diagnostic accuracy of different non-endoscopic surveillance techniques including cytosponge?	<ul style="list-style-type: none"> Sensitivity Specificity Data to calculate 2x2 tables to calculate sensitivity and specificity (number of true positives, true negatives, false positives and false negatives).
Intervention	What is the optimal frequency and duration of endoscopic surveillance for adults with Barrett's oesophagus?	<ul style="list-style-type: none"> Health related quality of life Progression to high grade dysplasia or cancer Mortality Adverse events / complications (bleeding, perforation, pain) Adherence to surveillance (physician and patient)
Diagnostic test accuracy	Diagnostic test accuracy For adults with suspected stage 1 carcinoma, what is	<ul style="list-style-type: none"> Diagnostic test accuracy Tumour or Node or Metastasis staging (or all) Sensitivity Specificity

Supplementary Tables, di Pietro et al, National Institute for Health and Care Excellence (NICE) guidance on monitoring and management of Barrett's oesophagus and stage I oesophageal adenocarcinoma

Type of review	Review questions	Outcomes
Diagnostic RCT	<p>the clinical and cost effectiveness of different endoscopic and radiological staging techniques?</p> <p>For adults with suspected stage 1 adenocarcinoma, what is the diagnostic accuracy of different endoscopic and radiological staging techniques?</p>	<ul style="list-style-type: none"> • Data to calculate 2x2 tables to calculate sensitivity and specificity (number of true positives, true negatives, false positives and false negatives) • Health-related quality of life • Progression to higher stage of cancer • Mortality • Adverse events (staging perforation, bleeding, pain, allergic reaction to contrast and complications of oesophagectomy)
Intervention	For adults with Barrett's Oesophagus with low grade or indefinite dysplasia, what is the clinical and cost effectiveness of endoscopic treatments?	<ul style="list-style-type: none"> • Mortality (disease specific mortality and all-cause mortality) • Health related quality of life • Complete regression of Barrett's dysplasia and Barrett's oesophagus • Recurrence of dysplasia or neoplasia • Need for retreatment • Complications of treatment (bleeding, perforation, stricture, pain) • Rate of hospitalization • Progression to higher grade dysplasia and cancer • Conversion to non-endoscopic procedure
Intervention	For adults with high-grade dysplasia and stage 1 adenocarcinoma, what is the clinical and cost	<ul style="list-style-type: none"> • Mortality (disease specific mortality and all-cause mortality) • Treatment related mortality • Health related quality of life (any validated score) • Complete regressions of dysplasia or Barrett's oesophagus • Recurrence of Barrett's dysplasia or neoplasia

Supplementary Tables, di Pietro et al, National Institute for Health and Care Excellence (NICE) guidance on monitoring and management of Barrett's oesophagus and stage I oesophageal adenocarcinoma

Type of review	Review questions	Outcomes
	effectiveness of endoscopic treatments alone or in combination?	<ul style="list-style-type: none"> • Need for retreatment • Complications of treatment (e.g. bleeding, pain infection, perforation, stricture) • Length of hospital stay • Conversion of endoscopic treatment to surgery
Intervention	For adults with stage 1 oesophageal adenocarcinoma, what is the clinical and cost effectiveness of oesophagectomy?	<ul style="list-style-type: none"> • Mortality (all-cause mortality, disease specific and treatment related) • Health related quality of life (any validated scores) • Progression of stage 1 adenocarcinoma to higher stages • Complications of surgery (e.g. perforation, stricture, pneumonia, anastomotic leak, weight loss, sepsis) • Adverse events (e.g. stricture, chronic ill health, chronic pain) • Length of hospital stay • Regression of Barrett's Oesophagus • Recurrence of Barrett's Oesophagus and Barrett's related neoplasia • Repeat intervention • (need for) Conversion from endoscopic to surgery
Intervention	For adults with stage 1b adenocarcinoma, what is the clinical and cost effectiveness of different non-surgical interventions?	<ul style="list-style-type: none"> • Mortality (all-cause mortality & disease specific mortality) • Health related quality of life (any validated score) • Progression of stage 1 adenocarcinoma to higher stages • Severe adverse events from oncological treatment. Such as: Infection, Thrombosis, Myelosuppression, Cardiac or respiratory complications, Radiation stricture or fistula, GI disease effects (diarrhoea, nausea, vomiting) • Adverse events from surgery & endoscopic treatment

Supplementary Tables, di Pietro et al, National Institute for Health and Care Excellence (NICE) guidance on monitoring and management of Barrett's oesophagus and stage I oesophageal adenocarcinoma

Type of review	Review questions	Outcomes
Intervention	For adults with Barrett's Oesophagus, what is the clinical and cost effectiveness of anti-reflux surgery to reduce progression to dysplasia or cancer?	<ul style="list-style-type: none"> • Mortality (disease specific mortality, treatment related mortality and all cause) • Health related quality of life • Dysphagia • Progression to/of dysplasia • Progression to cancer • Adverse events (including failure of procedure, rate of re-operation, sedation related, bleeding, pain, perforation) • Reintroduction of regular medication • Rate of re-introduction of PPI
Intervention	For adults with Barrett's Oesophagus or stage 1 adenocarcinoma, what is the clinical and cost effectiveness of anti-reflux surgery to induce remission of disease or prevent recurrence?	<ul style="list-style-type: none"> • Mortality (disease-specific mortality, treatment related mortality and all cause) • Health related quality of life • Progression of grade of dysplasia • Progression to cancer • Recurrence of Barrett's oesophagus/ dysplasia/cancer • Number of endoscopic treatments to achieve remission of Barrett's • Time duration of the endoscopic treatment • Adverse events (such as bleeding, pain)
Intervention	For people who have received endoscopic treatment for Barrett's Oesophagus related stage 1 adenocarcinoma, what is the clinical and cost	<ul style="list-style-type: none"> • Mortality (all-cause mortality and disease specific mortality) • Health related quality of life (any validated scores) • Recurrence of cancer or dysplasia • Adverse events (infection, perforation, bleeding) • Detection of incidental findings and subsequent investigations

Supplementary Tables, di Pietro et al, National Institute for Health and Care Excellence (NICE) guidance on monitoring and management of Barrett's oesophagus and stage I oesophageal adenocarcinoma

Type of review	Review questions	Outcomes
	effectiveness of endoscopic follow up with or without radiological follow up?	
Intervention	For people who have received endoscopic treatment for Barrett's oesophagus or stage 1 adenocarcinoma, what is the optimal frequency and duration of endoscopic and radiological follow up?	<ul style="list-style-type: none">• Mortality (all cause and disease specific mortality)• Health related quality of life (any validated scores)• Patient preference• Recurrence of Barrett's Oesophagus• Recurrence Stage 1 adenocarcinoma• Adverse events (stricture, perforation, infection, bleeding)• Endoscopic reintervention• Non endoscopic intervention (oncological or surgical)

Supplementary Tables, di Pietro et al, National Institute for Health and Care Excellence (NICE) guidance on monitoring and management of Barrett's oesophagus and stage I oesophageal adenocarcinoma

Supplementary Table 2: Summary of studies included in the evidence review for patient information and support

Study	Design	Population	Research aim	Comments
Arney 2014	Structured, in-depth qualitative interviews with framework analysis methodology.	Barrett's oesophagus patients (n=20) who had received at least one surveillance esophagogastroduodenoscopy (EGD). Mean age (SD): 62.9 (7.32) years; n=9 were diagnosed with no dysplasia, n=10 with low-grade dysplasia and n=1 with high-grade dysplasia. USA	To define the patient experience of EGD from in-depth qualitative interviews with patients who recently underwent surveillance EGD.	35% completed five or more surveillance EGDs; 25% completed only 1 prior EGD. Mean number (range) of completed EGDs: 4.3 (1-20). None of the EGD procedures were performed using propofol or monitored anaesthesia care; 90% were performed under conscious sedation combined with topical anaesthesia to the back of the throat.
Bailey 2009	Semi-structured interviews with thematic analysis	Patients enrolled on a Barrett's surveillance programme in a large teaching hospital. (N=15) Median age: 59 years (36-77)	To assess patients' perceptions, experience, and informational needs about Barrett's oesophagus to improve the understanding of health professionals and	Participants had been on a surveillance programme for a combined total of 92 years, with a mean of 6 years (ranging from 1–21 years). Eleven participants (73%) were receiving

Supplementary Tables, di Pietro et al, National Institute for Health and Care Excellence (NICE) guidance on monitoring and management of Barrett's oesophagus and stage I oesophageal adenocarcinoma

Study	Design	Population	Research aim	Comments
		UK	therefore their ability to provide the best care for their patients.	2-yearly surveillance endoscopies.
Britton 2019	Exploratory qualitative research, part of a concurrent mixed-methods study involving semi-structured interviews with thematic analysis	Patients with Barrett's oesophagus, enrolled in surveillance at a single general NHS hospital (N=20) Median age= 63 years (42-77 y) UK	To identify and explore factors impacting BO patients' HRQOL, the follow-up needs of BO patients and patients' perceptions and attitudes to new models of follow-up care	Participant's demographics and disease-specific information were also collected from their medical notes and endoscopy reports. Field notes were taken at the time of each interview.
Cooper 2009	Questionnaire study with quantitative analysis	Barrett's oesophagus patients undergoing surveillance (n=151) Median age (range): 66 (41-79).	To examine the experience of patients undergoing endoscopic surveillance for BO, their levels of anxiety and depression, and	The questionnaire included seven questions on patients' attitudes towards Barrett's oesophagus and endoscopic surveillance, and perceptions of cancer

Supplementary Tables, di Pietro et al, National Institute for Health and Care Excellence (NICE) guidance on monitoring and management of Barrett's oesophagus and stage I oesophageal adenocarcinoma

Study	Design	Population	Research aim	Comments
		No dysplasia 90%, indefinite dysplasia 3%, low-grade dysplasia 7%, high-grade dysplasia 0% UK	quality of life and how the relationship with their physicians influences these factors.	risk in Barrett's oesophagus.
Gough 2003	Postal questionnaire with quantitative analysis	Barrett's oesophagus patients identified via the 'Endoscribe' database (n=195). Characteristics not specified. UK	To assess the sources of information for a group of patients with Barrett's oesophagus; the availability of Internet access for the patients and their views on the future availability and delivery of information.	People with oesophageal adenocarcinoma were excluded.
Griffiths 2011	Qualitative semi-structured interviews with framework for content analysis.	People at high risk of malignant progression from Barrett's columnar lined oesophagus enrolled in endoscopic surveillance program (N=22) Aged 50-70 years	To explore patients' knowledge and understanding of Barrett's oesophagus and how the information forming the basis of that knowledge and understanding	Those with serious concomitant disease such as cancer, those who were unable to give valid consent, non-English speaking patients and those unable to read or write were excluded.

Supplementary Tables, di Pietro et al, National Institute for Health and Care Excellence (NICE) guidance on monitoring and management of Barrett's oesophagus and stage I oesophageal adenocarcinoma

Study	Design	Population	Research aim	Comments
		UK	influenced their self-management.	

Supplementary Tables, di Pietro et al, National Institute for Health and Care Excellence (NICE) guidance on monitoring and management of Barrett's oesophagus and stage I oesophageal adenocarcinoma

Supplementary Table 3: Summary of studies included in the evidence review for pharmacological interventions

Study	Intervention and comparison	Population	Outcomes	Comments
Babic 2015	<p>PPI medication:</p> <p>Pantoprazole (N = 54) dose of 40mg twice a day during 10weeks</p> <p>vs</p> <p>Lansoprasole (N = 36) dose of 30mg twice a day during 10 weeks, then 30mg once a day to the end of the study</p> <p>vs</p> <p>Omeprazole (N = 30) dose of 40mg twice a day for 10weeks, then 40mg once a day</p>	<p>Patients with Barrett's oesophagus diagnosed by endoscopy and histological analysis of the tissue biopsy specimen</p> <p>N=120 mean age (SD): 52.3 (14.4) years</p> <p>Croatia</p>	<p>Indefinite dysplasia</p> <p>Low-grade dysplasia</p> <p>High-grade dysplasia</p> <p>Follow up: 1 year</p>	<p>One patient in each Treatment group showed worsening and progression to higher grade of dysplasia at baseline.</p>
Jankowski 2018	<p>High or low dose PPI with or without aspirin.</p> <p>High dose PPI: Esomeprazole (40 mg capsules twice daily; n=1270)</p> <p>Vs</p> <p>low dose (20 mg capsules once daily; n=1265).</p>	<p>People aged ≥ 18 years with circumferential Barrett's oesophagus of at least 1 cm in length ($\geq C1M1$) or a tongue of Barrett's oesophagus of at least 2 cm in</p>	<p>All-cause mortality</p> <p>Cause-specific mortality</p> <p>High-grade dysplasia</p> <p>Oesophageal adenocarcinoma</p>	<p>Participants in the AsPECT trial were randomised using a 2x2 factorial design to receive high or low dose PPI with or</p>

Supplementary Tables, di Pietro et al, National Institute for Health and Care Excellence (NICE) guidance on monitoring and management of Barrett's oesophagus and stage I oesophageal adenocarcinoma

Study	Intervention and comparison	Population	Outcomes	Comments
	<p>Aspirin (300 mg in the UK, 325 mg in Canada; n=1138) Vs No aspirin (n=1142).</p> <p>Study comparison groups:</p> <p>1) High dose PPI vs low dose PPI (in each group there was an approximately equal number of people who did or did not receive aspirin)</p> <p>2) Aspirin vs no aspirin (in each group there was an approximately equal number of people who received high and low dose PPI medication)</p>	<p>length (\geqC0M2), irrespective of the presence now or historically of histologically proven intestinal metaplasia.</p> <p>Countries: England, Scotland, Wales, and Northern Ireland, and one in McMaster Health Sciences Centre, Hamilton, ON, Canada</p>	<p>Serious adverse events(Blood and lymphatic system disorders, cardiac disorders, ear and labyrinth disorders, endocrine disorders, eye disorders, gastrointestinal disorders, general disorders and administration site conditions, hepatobiliary disorders, immune system disorders, infections and infestations, injury, poisoning, and procedural complications investigations, metabolism and nutrition disorders, musculoskeletal and connective tissue disorders, neoplasms benign, malignant, and unspecified (including cysts and polyps, nervous system disorders,</p>	<p>without aspirin.</p> <p>Results were reported separately for the comparisons of low vs high dose PPI and aspirin vs no aspirin.</p>

Supplementary Tables, di Pietro et al, National Institute for Health and Care Excellence (NICE) guidance on monitoring and management of Barrett's oesophagus and stage I oesophageal adenocarcinoma

Study	Intervention and comparison	Population	Outcomes	Comments
			psychiatric disorders, renal and urinary disorders, respiratory, thoracic, and mediastinal disorders, skin and subcutaneous tissue disorders, vascular disorders) Follow up: Median 8.9 years	

Supplementary Tables, di Pietro et al, National Institute for Health and Care Excellence (NICE) guidance on monitoring and management of Barrett's oesophagus and stage I oesophageal adenocarcinoma

Supplementary Table 4: Summary of studies included in the evidence review on clinical effectiveness of endoscopic surveillance.

Study	Intervention and comparison	Population	Outcomes	Sub-group (adequate surveillance or non-adequate surveillance)	Comments
Corley, 2013	<p>Surveillance endoscopy: any esophagogastroduodenoscopy performed principally for cancer surveillance of a previously documented Barrett's oesophagus, not for symptoms. (N=82)</p> <p>Vs</p> <p>No surveillance (N=57)</p>	<p>Cases: People diagnosed with oesophageal or gastroesophageal junction adenocarcinoma; with a Barrett's oesophagus diagnosis 6 months or more before their cancer diagnosis; who subsequently died of oesophageal/gastroesophageal junction adenocarcinoma or its complications(N=38).</p> <p>Controls: had a diagnosis of Barrett's oesophagus who did not die of oesophageal or gastroesophageal junction adenocarcinoma through the end of the follow-up evaluation(N=101).</p> <p>Controls were matched to cases by age at Barrett's oesophagus diagnosis, year of Barrett's oesophagus diagnosis, medical centre of Barrett's oesophagus diagnosis, sex, and race.</p>	<p>Mortality from OAC</p> <p>At 3-year follow-up</p>	Not possible to define as adequacy of surveillance not reported	<p>Case control study</p> <p>The cases and matched controls defined the outcome of oesophageal adenocarcinoma (OAC) mortality, and the association with prior surveillance was investigated with conditional logistic regression.</p> <p>The logistic regression analysis only adjusted for dysplasia status but the controls were already fairly well-matched to the cases on the basis of a number of plausible potential confounders (see population column) so to some extent quite reasonable attempts were made to reduce selection bias.</p> <p>The reasons for the comparator group not having surveillance was not explained.</p>

Supplementary Tables, di Pietro et al, National Institute for Health and Care Excellence (NICE) guidance on monitoring and management of Barrett's oesophagus and stage I oesophageal adenocarcinoma

Study	Intervention and comparison	Population	Outcomes	Sub-group (adequate surveillance or non-adequate surveillance)	Comments
		Mean age at index date: surveillance group= 73.5 (8.2); no surveillance group=73.8 (8.1) USA			
El-Serag, 2016	Barrett's Surveillance: included patients who received surveillance endoscopy for non-dysplastic Barrett's, or surveillance endoscopy for Barrett's with dysplasia initially detected as a result of Barrett's surveillance. Vs Comparator: Patients whose OAC was initially detected on diagnostic endoscopy, screening endoscopy, unknown indication for endoscopy or surveillance endoscopy for dysplasia originally detected in non-Barrett's surveillance endoscopy	Patients with Barrett's and OAC who were >18 years of age at Barrett's index date and had at least 1 year of follow-up after the index Barrett's endoscopy as well as before their last VA visit or date of oesophageal cancer(N=424). Mean age (SD): 61.9 (9.9) USA	Mortality from OAC All-cause mortality At 5-year follow-up	Not possible to define as adequacy of surveillance not reported	In this retrospective cohort study, a number of plausible covariates were included in the multivariable analyses, reducing to some extent the risk of selection bias. Adjustment was carried out for OAC diagnosis, age, ethnicity, propensity to go into the surveillance group, comorbidities, total number of VA/GI visits, stage and treatment. The reasons for the comparator group not having surveillance was not explained.
MacDonald, 2000	Surveillance endoscopies: defined as examinations done only for surveillance. Endoscopies to investigate deteriorating symptoms	Surveillance group: People with proven Barrett's oesophagus who were potentially suitable for major surgery should a lesion be	Mortality from OAC All-cause mortality	Not possible to define as adequacy of	This retrospective cohort study was at risk of critical bias. Firstly, the comparator group were systematically different to the

Supplementary Tables, di Pietro et al, National Institute for Health and Care Excellence (NICE) guidance on monitoring and management of Barrett's oesophagus and stage I oesophageal adenocarcinoma

Study	Intervention and comparison	Population	Outcomes	Sub-group (adequate surveillance or non-adequate surveillance)	Comments
	<p>in a patient in the surveillance programme were not included as surveillance endoscopies.</p> <p>Vs</p> <p>No surveillance - this was in a group with Barrett's for whom surveillance was not regarded as appropriate. The main reasons were age >70 and co-existing serious illness.</p>	<p>detected, which usually meant patients younger than 70 who had no serious coexisting disease (N=143)</p> <p>No surveillance group: were older (69 vs 57 years), less likely to be men (47% vs 60%), had a shorter length of metaplasia (73mm vs 81mm) and were less likely to have a stricture (5% vs 16%) compared to those in the surveillance group (N=266)</p> <p>Mean age (range): Surveillance group= 57 (17-69) years No surveillance group= 69 (17-94) years</p> <p>UK</p>		surveillance not reported	surveillance group in prognostic characteristics. Secondly no statistical adjustments or matching were carried out.
Roberts, 2010	<p>Scheduled annual endoscopy with 4 quadrant biopsies every 2cm</p> <p>Vs</p>	<p>Patients with Barrett's metaplasia, and eventual OAC or HGD; fit for curative treatment (N=82) Mean age: not reported; age range: 46 to 93 years</p>	<p>All-cause mortality</p> <p>At 5-year follow-up</p>	Adequate: Four quadrant biopsies every 2cm	This retrospective cohort study was at risk of critical bias. Firstly, the comparator group were systematically different to the surveillance group in prognostic

Supplementary Tables, di Pietro et al, National Institute for Health and Care Excellence (NICE) guidance on monitoring and management of Barrett's oesophagus and stage I oesophageal adenocarcinoma

Study	Intervention and comparison	Population	Outcomes	Sub-group (adequate surveillance or non-adequate surveillance)	Comments
	Single endoscopy with no scheduled programme of surveillance	UK			characteristics. Secondly no statistical adjustments or matching were carried out.
Royston, 2016	Serial endoscopy and biopsy at 2-3-year intervals. Vs Clinical follow-up or lost to follow up	People with gastro-oesophageal reflux disease and Barrett's Oesophagus who later developed OAC (N=54) UK	Mortality from OAC At minimum 2-year follow-up	Not possible to define as adequacy of surveillance not reported	This retrospective cohort study was at risk of critical bias. Firstly, the comparator group were systematically different to the surveillance group in prognostic characteristics. Secondly no statistical adjustments or matching were carried out.
Theron, 2016	Endoscopic surveillance: people underwent endoscopic surveillance if suitable every 2 years until they reached 75 years of age or developed co-morbidity that, in the opinion of the responsible clinician, precluded further surveillance due to the risks of oesophagectomy. Vs No surveillance: Patients failing to attend surveillance endoscopy despite being clinically indicated for surveillance.	All patients diagnosed with Barrett's between 1982 and 2007 at City Hospital, Birmingham, and between 1997 and 2007 at the adjacent Sandwell General Hospital, West Bromwich (N=431) Median age (range): endoscopic surveillance= 55.5 (51.2 to 66.6); no surveillance= 58 (49.2 to 63.6) UK	Mortality from OAC All-cause mortality Progression to OAC At 5-year follow-up	Adequate: Quadrantic biopsies were taken every 2 cm throughout the Barrett's segment in addition to targeted biopsies of any focal lesions and reported by a gastrointestinal histopathologist	This retrospective cohort study was also at risk of critical bias. Although the comparator group were clinically indicated for surveillance and did not receive it for non-clinical reasons, no attempt was made to adjust for any residual selection bias.
Verbeeck, 2014	Endoscopic surveillance: Participation in an endoscopic surveillance program was defined as a prior Barrett's diagnosis 1 year or	All patients diagnosed with OAC between 1999 and 2009 in the Netherlands were selected from	Mortality from OAC Progression to type IV tumour stage	Not possible to define as adequacy of	This study looked at other groups which have not been included in this review as they are less relevant to the aims of the review:

Supplementary Tables, di Pietro et al, National Institute for Health and Care Excellence (NICE) guidance on monitoring and management of Barrett's oesophagus and stage I oesophageal adenocarcinoma

Study	Intervention and comparison	Population	Outcomes	Sub-group (adequate surveillance or non-adequate surveillance)	Comments
	<p>longer before OAC diagnosis with at least one additional endoscopy with biopsies between the first histologic Barrett's and OAC diagnosis.</p> <p>Vs</p> <p>No surveillance: people with Barrett's not given any surveillance.</p>	<p>the nationwide Netherlands Cancer Registry (N=671)</p> <p>Age details not specified.</p> <p>Holland</p>	At 2-year follow-up	surveillance not reported	<p>inadequate surveillance and Barrett's unknown.</p> <p>In this retrospective cohort study, a number of plausible covariates were included in the multivariable analysis, reducing to some extent the risk of selection bias in the mortality analysis. Adjustments were made for age, gender, time between Barretts diagnosis and OAC diagnosis, dysplasia grade, hospital type, tumour grade, tumour stage, resectability of tumour and treatment. However, the progression to type IV tumour stage analysis is unadjusted and therefore prone to high levels of selection bias, particularly since the reasons for the comparator group not having surveillance was not explained.</p>

Supplementary Tables, di Pietro et al, National Institute for Health and Care Excellence (NICE) guidance on monitoring and management of Barrett's oesophagus and stage I oesophageal adenocarcinoma

Supplementary Table 5: Summary of studies included in the evidence review for diagnostic accuracy of endoscopic surveillance

Study	Population	Target condition	Index test	Reference standard	Comments
Chromoendoscopy					
Bajbouj 2010	Participants aged 18 – 80 years; Barrett's length at least COM1 according to Prague classification; in the case of suspected intraepithelial neoplastic changes, lesion <1cm; acid-suppressive therapy at least at the standard dose for a minimum of 4 weeks (n=68) Age, mean (SD): 60 ± 12 years Germany	Barrett's Oesophagus: high grade intraepithelial neoplasia / carcinoma	Probe based confocal laser endomicroscopy	Standard endoscopy	Diagnostic data reported per biopsy and per patient 2x2 data not reported
Canto 2014	Barrett's oesophagus patients undergoing routine surveillance or referred for confirmation of diagnosis and/or endoscopic therapy (n=192) Median age (range): high-definition white-light endoscopy and random biopsy group: 62 (26 to 79); high-definition white-light endoscopy followed by laser endomicroscopy and targeted biopsy group: 62 (32 to 82) USA	Barrett's oesophagus confocal neoplasia	High-definition white light endoscopy alone with random biopsies (HDWLE+RB) High-definition white light endoscopy + endoscope-based confocal laser endomicroscopy (CLE) with targeted biopsies (HDWLE+CLE+TB)	Blinded expert pathologic diagnosis	Multi-centre RCT 2x2 data not reported

Supplementary Tables, di Pietro et al, National Institute for Health and Care Excellence (NICE) guidance on monitoring and management of Barrett's oesophagus and stage I oesophageal adenocarcinoma

Study	Population	Target condition	Index test	Reference standard	Comments
Curvers 2010	<p>Patients with Barrett's oesophagus referred to 5 participating centres for work-up of endoscopically inconspicuous high-grade dysplasia/ early carcinoma (HGD/Ca) (n=87)</p> <p>Age, mean (SD): 68 (9)</p> <p>Netherlands & USA</p>	Barrett's oesophagus with high grade dysplasia and early carcinoma	Endoscopic tri-modal imaging (incorporating high-resolution endoscopy, autofluorescence and narrow-band imaging)	Standard video endoscopy	<p>Randomised cross-over multi-centre study</p> <p>2x2 data calculated</p>
Egger 2003	<p>Participants undergoing routine surveillance for non dysplastic, dysplastic or first time in surveillance for confirmed Barrett's Oesophagus without (n=18) or with (n=8) only low grade dysplasia</p> <p>Age, mean (range): 64.8 years; range 29–78</p> <p>Germany</p>	Barrett's Oesophagus with intestinal metaplasia with columnar and goblet cells vs low or high grade dysplasia, cancer	<p>Autofluorescence</p> <p>Methylene blue staining</p>	Standard endoscopy	<p>Diagnostic data given per biopsy and per patient</p> <p>2x2 data not reported</p> <p>Indirectness: sensitivity and specificity were not reported separately for dysplasia or cancer but also include metaplasia findings.</p>
Jayasekera 2012	<p>Patients referred for endoscopic evaluation and treatment of dysplastic Barrett's oesophagus, which had been previously diagnosed by their referring physician (n=50)</p> <p>Age, median (range): 66 (41-86) years</p>	Barrett's oesophagus with high grade dysplasia and intramucosal cancer.	<p>Narrow-band imaging</p> <p>Confocal laser endomicroscopy</p> <p>High definition white light endoscopy</p>	Histology (Seattle protocol)	<p>Study aim: to assess 3 consecutive imaging modalities with histological assessment (standard Seattle protocol biopsies) as the reference standard.</p> <p>2x2 data calculated</p>

Supplementary Tables, di Pietro et al, National Institute for Health and Care Excellence (NICE) guidance on monitoring and management of Barrett's oesophagus and stage I oesophageal adenocarcinoma

Study	Population	Target condition	Index test	Reference standard	Comments
	Australia				Indirectness: Serious indirectness as results for white light endoscopy are given separately with biopsy as the reference standard
Longcroft-Wheaton 2020	People with biopsy-proven Barrett's oesophagus, no history or prior dysplasia or cancer, positive for intestinal metaplasia Age, mean (SD): 66 (11.1) UK	Barrett's oesophagus with neoplasia (high grade dysplasia, low grade dysplasia, cancer)	Acetic acid-targeted biopsies (Portsmouth protocol)	Seattle protocol-guided nontargeted biopsies.	Pilot multi-centre randomised cross-over trial 2x2 data calculated
Ormeçi 2008	Patients older than 18 years with an indication for esophagogastroduodenoscopy were selected for this study (n=109) Age, mean (SD): 62.32 (10.61 years); range, 33–82 years Turkey	Barrett's Oesophagus with dysplasia or cancer	Chromoendoscopy with methylene blue	Standard endoscopy	Histopathologic diagnosis was accepted as the gold standard, and conventional endoscopic or chromoendoscopic diagnosis was compared with the histopathologic diagnosis. Results from chromoendoscopy and standard/conventional endoscopy reported separately. 2x2 data not reported
Pascarenco 2016	Patients over 18 with endoscopic confirmation of Barrett's Oesophagus (n=84) Age, mean (range): 57.4 (26-84)	Barrett's oesophagus with low grade dysplasia or indefinite for dysplasia	Narrow-band imaging	White light imaging	2x2 data calculated

Supplementary Tables, di Pietro et al, National Institute for Health and Care Excellence (NICE) guidance on monitoring and management of Barrett's oesophagus and stage I oesophageal adenocarcinoma

Study	Population	Target condition	Index test	Reference standard	Comments
	Romania				
Ragunath 2003	<p>Patients with endoscopic and histological diagnosis of Barrett's oesophagus segments of 3cm or more in length, adults patients of any sex attending for endoscopy, including newly diagnosed patients as well as those undergoing surveillance endoscopy for Barrett's Oesophagus, and patients known to have dysplasia without mucosal abnormalities who were receiving follow up endoscopies (n=57)</p> <p>Age: not reported</p> <p>UK</p>	Barrett's Oesophagus with dysplasia or carcinoma	Methylene blue	Standard endoscopy	2x2 data not reported
Sharma 2011	<p>Consecutive patients undergoing BE surveillance and/or referred for BE-associated neoplasia (HGD/oesophageal carcinoma) evaluation and treatment were prospectively enrolled in this trial at 5 hospitals (n=101)</p> <p>Age, mean (range): 65.1 years (27–90 years)</p> <p>France, Germany & USA</p>	Barrett's Oesophagus: high grade dysplasia / oesophageal cancer	<p>Narrow-band imaging</p> <p>Probe-based confocal laser endomicroscopy</p>	Histology	<p>Diagnostic data reported per location</p> <p>2x2 data calculated</p> <p>Indirectness: the paper measures diagnostic accuracy of the visual findings from each HD-WLE, NBI, pCLE with reference to the full histological findings. i.e. reference standard was histology derived from biopsies from each</p>

Supplementary Tables, di Pietro et al, National Institute for Health and Care Excellence (NICE) guidance on monitoring and management of Barrett's oesophagus and stage I oesophageal adenocarcinoma

Study	Population	Target condition	Index test	Reference standard	Comments
					procedure rather than histology from biopsies from the HD-WLE
Sharma 2013	<p>Patients undergoing screening or surveillance for Barrett's oesophagus at three tertiary referral centres.</p> <p>Age, mean (range): 61 (38-85) years</p> <p>USA, Netherlands</p>	Barrett's oesophagus with neoplasia (high grade dysplasia, oesophageal adenocarcinoma)	Narrow-band imaging	White-light endoscopy	<p>Multi-centre randomised cross-over trial</p> <p>2x2 data calculated</p>
Vithayathil 2022	<p>Non-dysplastic Barrett's oesophagus patients (n=134)</p> <p>Age, median (range): 67.3 (38.0 to 89.0) years</p> <p>UK</p>	Dysplasia (dysplasia and high-grade dysplasia)	<p>Autofluorescence imaging- guided probe-based confocal laser endomicroscopy and molecular biomarkers (3-biomarker panel) (AFI-guided pCLE)</p> <p>High-resolution white-light endoscopy with Seattle protocol biopsies</p>	Histology	<p>Cross-over RCT</p> <p>Biomarkers: p53 and cyclin A by immunohistochemistry; aneuploidy by image cytometry)</p>
<i>Endoscopic Brushing</i>					
Anandasabapathy 2011	Subjects with a known prior history (recent or remote) of	Barrett's Oesophagus: Barrett's metaplasia	Brush biopsy	Forceps biopsy (refers to Seattle protocol biopsy)	Study does not mention the type or methodology of endoscopic

Supplementary Tables, di Pietro et al, National Institute for Health and Care Excellence (NICE) guidance on monitoring and management of Barrett's oesophagus and stage I oesophageal adenocarcinoma

Study	Population	Target condition	Index test	Reference standard	Comments
	Barrett's oesophagus with dysplasia/neoplasia (indefinite for-dysplasia (IND), low-grade (LGD), high-grade dysplasia (HGD) or intramucosal adenocarcinoma (IMCA) and no grossly evident lesion (n=181) Age, mean (range): 65 (46 – 87) USA	(IM), indefinite for dysplasia (IND), dysplasia (LGD/ HGD/CA), and inadequate (no Barrett's oesophagus)			examination for biopsies and only notes the comparison of brush versus forceps. 2x2 data available
<u>Artificial Intelligence</u>					
Ebigbo 2021	Endoscopic, high resolution, white light images of T1a and T1b Barrett's Cancer were collected retrospectively in three tertiary care centres in Germany (n=230 images) Age not reported Germany	Barrett's Oesophagus with T1a or T1b neoplasia	Convolutional neural networks	Histopathology (from white light imaging samples)	2x2 data not reported
Hashimoto 2020	Images from participants with histologically proven dysplasia (high grade dysplasia and T1 adenocarcinoma) in Barrett's (n=100 patients; 1832 images) Age: not reported	Barrett's Oesophagus with high grade dysplasia	Narrow-band imaging + AI	White light imaging	Results for: narrow-band imaging +AI and white light imaging + AI, are provided separately with histology used as the reference standard Diagnostic data given per image taken

Supplementary Tables, di Pietro et al, National Institute for Health and Care Excellence (NICE) guidance on monitoring and management of Barrett's oesophagus and stage I oesophageal adenocarcinoma

Study	Population	Target condition	Index test	Reference standard	Comments
	USA				2x2 data calculated

Supplementary Tables, di Pietro et al, National Institute for Health and Care Excellence (NICE) guidance on monitoring and management of Barrett's oesophagus and stage I oesophageal adenocarcinoma

Supplementary Table 6: Summary of studies included in the evidence review for staging of oesophageal adenocarcinoma

Study	Population	Target condition	Index test	Reference standard	Comments
Cen 2008	Oesophageal cancer patients (N=87; n=81 with adenocarcinoma, n=6 squamous cell carcinoma) Median age: 65 years USA	T1 staging (T1a vs T1b, T2-4) Metastasis/N staging (N0 vs N1)	EUS	Histopathologic assessment of resected specimens	Retrospective study Indirectness: N=22 had cancer above stage 1 but it is not clear if this was suspected from baseline. N=6 had squamous cell carcinoma
Pech 2006	Patients with confirmed 'early' cancer in Barrett's oesophagus (n=100) Median age (range): 64 (58-72) years The T category was assessed using high frequency probes (HFPs) in 66/100	T (T1m vs T1sm) and N staging Staging using the Paris classification T1m assumed to correspond to T1a T1sm assumed to correspond to T1b	(Miniprobe) EUS (upper gastrointestinal endoscopy) CT (of the chest and upper abdomen, and abdominal ultrasonography)	Histology (based on endoscopic resection or surgical specimens)	Patients in whom carcinoma could not be confirmed by experienced gastroenterological pathologists were excluded Includes people with T2 (n=4) and T3(n=3) histology; data for EUS calculated including those with T1m and T1sm staging based on EUS and

Supplementary Tables, di Pietro et al, National Institute for Health and Care Excellence (NICE) guidance on monitoring and management of Barrett's oesophagus and stage I oesophageal adenocarcinoma

Study	Population	Target condition	Index test	Reference standard	Comments
	patients who had elevated and/or depressed lesions. EUS with HFPs was not carried out on endoscopically unequivocal mucosal neoplasia (type IIb lesions in the Paris classification) Germany				Histology (n=55), excluding T2 and T3 2x2 table for N staging and T staging for CT could not be calculated from the paper.
Pech 2010	Patients with suspected 'early' cancer in Barrett's oesophagus, referred for endoscopic treatment for Barrett's cancer (n=43) Median age (range): 66 (58-73) Germany	T staging (mucosal and submucosal Barrett's cancer i.e. T1m vs T1sm) N staging (N1, N0)	High frequency mini-probes (HFPs) Conventional radial endoscopic ultrasonography (crEUS)	Histology (based on endoscopic resection or surgical specimens)	Prospective randomised cross-over study Includes people with macroscopic tumour type: I-III; with histological stage T1m1-4 and T1sm1-3 2x2 table only calculated for N staging

Supplementary Tables, di Pietro et al, National Institute for Health and Care Excellence (NICE) guidance on monitoring and management of Barrett's oesophagus and stage I oesophageal adenocarcinoma

Study	Population	Target condition	Index test	Reference standard	Comments
Scotiniotis 2001	<p>Patients with Barrett's oesophagus and high-grade dysplasia or intramucosal carcinoma based on endoscopy, endoscopic biopsies, and CT. N=22</p> <p>Mean age (SD) 64 (8.7) years</p> <p>USA</p>	T staging (T1b vs Tcis/T1a, T2, T3)	EUS	Surgical/pathologic evaluation	<p>Retrospective study</p> <p>Indirectness: n=4 had cancer at stages T2 and T3</p> <p>N staging results not included in the present review as 3/5 people classified as positive of lymph node metastasis by the EUS had stage beyond T1 (T2/3) and therefore the majority of people for which sensitivity results were based did not meet the review protocol.</p>
Thomas 2010	<p>Patients with histologically proven high-grade intraepithelial neoplasia or</p>	<p>T staging (; T1sm vs T0 and T1m)</p> <p>N staging (N1 vs N0)</p>	EUS	Histology	<p>Retrospective study</p> <p>Pre-EUS histology based on 1 to 2 esophagogastruod endoscopies and 2</p>

Supplementary Tables, di Pietro et al, National Institute for Health and Care Excellence (NICE) guidance on monitoring and management of Barrett's oesophagus and stage I oesophageal adenocarcinoma

Study	Population	Target condition	Index test	Reference standard	Comments
	intramucosal carcinoma (n=50) Median age (range): 69 (60-79) years UK				to 36 mucosal biopsies (median 12): n=31 (62%) high-grade dysplasia, n=10 (38%) intramucosal carcinoma

Supplementary Tables, di Pietro et al, National Institute for Health and Care Excellence (NICE) guidance on monitoring and management of Barrett's oesophagus and stage I oesophageal adenocarcinoma

Supplementary Table 7: Diagnostic accuracy evidence for staging for suspected stage 1 oesophageal adenocarcinoma

Studies	N	Risk of bias	Inconsistency	Indirectness	Imprecision	Effect size (95%CI)	Quality
CT to detect T1 tumours in people with 'early' cancer in Barrett's oesophagus							
1 prospective cohort study	66	Serious ¹	Not serious	Serious ²	Cannot be assessed ³	Sensitivity=1.00	VERY LOW
		Serious ¹	Not serious	Serious ²	Cannot be assessed ³	Specificity=0.00	VERY LOW
Mini-probe EUS to detect T1a vs T1b ('T1m vs T1sm') in people with 'early' cancer in Barrett's oesophagus							
1 prospective cohort study	55	Serious ¹	Not serious	Serious ²	Serious ⁴	Sensitivity= 0.89 (0.75 -0.96)	VERY LOW
		Serious ¹	Not serious	Serious ²	Serious ⁴	Specificity= 0.27 (0.06 -0.61)	VERY LOW
CT to detect N staging in people with 'early' cancer in Barrett's oesophagus							
1 prospective cohort study	66	Serious ¹	Not serious	Serious ²	Cannot be assessed ³	Sensitivity= 0.38	VERY LOW
		Serious ¹	Not serious	Serious ²	Cannot be assessed ³	Specificity=1.00	VERY LOW
Mini-probe EUS to detect N staging in people with 'early' cancer in Barrett's oesophagus							
1 prospective cohort study	66	Serious ¹	Not serious	Serious ²	Cannot be assessed ³	Sensitivity= 0.75	VERY LOW
		Serious ¹	Not serious	Serious ²	Cannot be assessed ³	Specificity= 0.97	VERY LOW
HFPs for T1a ('pT1m') in people with suspected 'early' cancer in Barrett's oesophagus							
1 prospective randomised cross-over study	36	Serious ¹	Not serious	Serious ²	Serious ⁴	Sensitivity= 0.70 (0.46 -0.87)	VERY LOW
	36	Serious ¹	Not serious	Serious ²	Very serious ⁴	Specificity= 0.69 (0.41- 0.88)	VERY LOW
HFPs for T1b ('pT1sm') in people with suspected 'early' cancer in Barrett's oesophagus							
1 prospective randomised cross-over study	36	Serious ¹	Not serious	Serious ²	Serious ⁴	Sensitivity= 0.69 (0.41 -0.88)	VERY LOW
		Serious ¹	Not serious	Serious ²	Serious ⁴	Specificity= 0.75 (0.50 -0.90)	VERY LOW
crEUS for T1a ('pT1m') in people with suspected 'early' cancer in Barrett's oesophagus							

Supplementary Tables, di Pietro et al, National Institute for Health and Care Excellence (NICE) guidance on monitoring and management of Barrett's oesophagus and stage I oesophageal adenocarcinoma

Studies	N	Risk of bias	Inconsistency	Indirectness	Imprecision	Effect size (95%CI)	Quality
1 prospective randomised cross-over study	25	Serious ¹	Not serious	Serious ²	Very serious ⁴	Sensitivity= 0.73 (0.39 -0.93)	VERY LOW
		Serious ¹	Not serious	Serious ²	Very serious ⁴	Specificity= 0.78 (0.49- 0.94)	VERY LOW
crEUS for T1b ('pT1sm') in people with suspected 'early' cancer in Barrett's oesophagus							
1 prospective randomised cross-over study	25	Serious ¹	Not serious	Serious ²	Serious ⁴	Sensitivity= 0.64 (0.36- 0.86)	VERY LOW
		Serious ¹	Not serious	Serious ²	Very serious ⁴	Specificity= 0.73 (0.39- 0.93)	VERY LOW
crEUS for N1 status in people with suspected 'early' cancer in Barrett's oesophagus							
1 prospective randomised cross-over study	16	Serious ¹	Not serious	Serious ²	Very serious ⁴	Sensitivity= 1.00 (0.29- 1.00)	VERY LOW
		Serious ¹	Not serious	Serious ²	Serious ⁴	Specificity= 0.92 (0.64- 1.00)	VERY LOW
EUS for T1a (vs T1b, T2-4) in people with oesophageal cancer							
1 retrospective cohort study	87	Serious ¹	Not serious	Very serious ²	Serious ⁴	Sensitivity= 0.67 (0.50- 0.80)	VERY LOW
		Serious ¹	Not serious	Very serious ²	Serious ⁴	Specificity= 0.93 (0.82- 0.99)	VERY LOW
EUS for N1 (vs N0) in people with oesophageal cancer							
1 retrospective cohort study	87	Serious ¹	Not serious	Very serious ²	Serious ⁴	Sensitivity= 0.38 (0.18- 0.62)	VERY LOW
		Serious ¹	Not serious	Very serious ²	Not serious	Specificity= 0.94 (0.85- 0.98)	VERY LOW
EUS for T1b (vs T0, T1a) in people with high-grade intraepithelial neoplasia or intramucosal carcinoma							
1 retrospective series	46	Very serious ¹	Not serious	Not serious	Serious ⁴	Sensitivity= 0.56 (0.31- 0.78)	VERY LOW
		Very serious ¹	Not serious	Not serious	Serious ⁴	Specificity: 0.93 (0.76- 0.99)	VERY LOW
EUS for N1 status in people with high-grade intraepithelial neoplasia or intramucosal carcinoma							
1 retrospective series	29	Very serious ¹	Not serious	Not serious	Very serious ⁴	Sensitivity= 0.50 (0.01- 0.99)	VERY LOW
		Very serious ¹	Not serious	Not serious	Serious ⁴	Specificity= 0.96 (0.81- 1.00)	VERY LOW
EUS for T1b (Tcis/T1a, T2, T3) in people with high-grade dysplasia or intramucosal carcinoma							
1 retrospective cohort study	22	Serious ¹	Not serious	Serious ²	Serious ⁴	Sensitivity: 1.00 (0.48- 1.00)	VERY LOW
		Serious ¹	Not serious	Serious ²	Serious ⁴	Specificity: 0.94 (0.71- 1.00)	VERY LOW

Supplementary Tables, di Pietro et al, National Institute for Health and Care Excellence (NICE) guidance on monitoring and management of Barrett's oesophagus and stage I oesophageal adenocarcinoma

¹ Risk of bias was assessed using the QUADAS-2 checklist. The evidence was downgraded by 1 increment if the studies were rated at serious risk of bias and downgraded by 2 increments if the studies were rated at very serious risk of bias.

² Evidence was downgraded by 1 increment due to serious concerns over population indirectness or by 2 increments due to very serious concerns over population indirectness.

³ Where the study does not report confidence intervals or the data to calculate 2x2 tables imprecision cannot be assessed. Where this is the case evidence quality was downgraded by 1 increment.

⁴ Imprecision was assessed based on inspection of the confidence intervals. For sensitivity, two clinical decision thresholds were determined at the value above which a test would be recommended (90%), and a second below which a test would be considered of no clinical use (60%). For specificity, two clinical decision thresholds were determined at the value above which a test would be recommended (80%), and a second below which a test would be considered of no clinical use (50%). The evidence was downgraded by 1 increment when the range of the confidence interval around the point estimate crossed one threshold and downgraded by 2 increments when the range covered two thresholds.

Supplementary Tables, di Pietro et al, National Institute for Health and Care Excellence (NICE) guidance on monitoring and management of Barrett's oesophagus and stage I oesophageal adenocarcinoma

Supplementary Table 8: Summary of studies included in the evidence review for treatment of low-grade dysplasia

Study	Intervention and comparison	Population	Outcomes	Comments
Barret 2021	Radiofrequency ablation (RFA) (n=40) vs Endoscopic surveillance: annually (n=42)	Barrett's oesophagus patients with confirmed low-grade dysplasia (n=82) Mean age (SD): 62.3 (10.06) years France	Complete eradication of dysplasia Complete eradication of intestinal metaplasia Persistent low-grade dysplasia at 3 years (extracted as proxy for recurrence of dysplasia) Complications (including fever, chest pain, upper GI bleeding, stricture) Progression to high-grade dysplasia or adenocarcinoma 3 years after randomisation	Multicentre RCT (14 French centres) N=81 (98.8%) were on PPIs at inclusion Anti-reflux surgery had been performed in n=16 patients (19.5%). N=8 (9.8%) had prior endoscopic resection for high-grade dysplasia/ early adenocarcinoma.

Supplementary Tables, di Pietro et al, National Institute for Health and Care Excellence (NICE) guidance on monitoring and management of Barrett's oesophagus and stage I oesophageal adenocarcinoma

Study	Intervention and comparison	Population	Outcomes	Comments
Phoa 2014	RFA (n=68); (double-dose PPI was given as maintenance therapy during the trial) vs Endoscopic surveillance (n=68):	Barrett's oesophagus patients with low-grade dysplasia (n=136) Mean age (SD): 63 (9.51) years The Netherlands, Belgium, UK, Ireland, Germany	Complete eradication of dysplasia Complete eradication of intestinal metaplasia Progression to high-grade dysplasia/adenocarcinoma Adverse events (protocol outcome: complications) During a 3-year follow-up	Multicentre RCT (9 European centres): the Surveillance vs Radiofrequency Ablation (SURF) study) The trial was terminated early due to the superiority of ablation for the primary outcome (neoplastic progression) and the potential for safety issues if the trial continued. At point of termination, participants had completed at least 2 years of follow-up.
Pouw 2020	RFA (n=68) Vs Endoscopic surveillance (n=68)	Barrett's oesophagus patients with low-grade dysplasia (n=136)	Progression to high-grade dysplasia/adenocarcinoma Follow-up: 73 months; additional median follow-up	Retrospective cohort study of patients included in the SURF study. Further non-comparative data available: at long-term follow-up 15 patients

Supplementary Tables, di Pietro et al, National Institute for Health and Care Excellence (NICE) guidance on monitoring and management of Barrett's oesophagus and stage I oesophageal adenocarcinoma

Study	Intervention and comparison	Population	Outcomes	Comments
		The Netherlands, Belgium, UK, Ireland, Germany	of 40 months (IQR 12-51) of the SURF study.	from the surveillance group were offered RFA. Complete clearance of intestinal metaplasia was found in 75/83 patients and recurrence was found in 7/75.
Shaheen 2009	RFA Vs Sham endoscopic procedure	Patients with dysplastic Barrett's oesophagus (n=127; n=64 had low-grade dysplasia and were included in this review) Mean age (range): 65.72 (41-78) USA	Complete eradication of dysplasia Complete eradication of intestinal metaplasia Progression to high-grade dysplasia/cancer At 12 months	Multicentre RCT (19 sites) Includes people with high-grade dysplasia but randomisation and results were stratified by grade of dysplasia; only results relevant to the low-grade dysplasia population are presented in the present review.

Supplementary Tables, di Pietro et al, National Institute for Health and Care Excellence (NICE) guidance on monitoring and management of Barrett's oesophagus and stage I oesophageal adenocarcinoma

Supplementary Table 9: Summary of studies included in the evidence review for treatment of high-grade dysplasia and stage I adenocarcinoma

Study	Intervention and comparison	Population	Outcomes	Comments
Li 2016	EMR+RFA (n=406) Vs RFA alone (n=857)	Patients with high-grade dysplasia (n=1054) or intramucosal carcinoma (IM) (n=209); Total n=1263 Mean age (SD): 66.59 (10.34) years USA	Treatment related mortality Complete eradication of dysplasia Complete eradication of intestinal metaplasia Recurrence of Intestinal metaplasia Complications of treatment (stricture, GI bleeding, hospitalisation) Number of RFA sessions required (protocol outcome: need for treatment)	US RFA Patient Registry Retrospective observational study; multicentre registry including people who had RFA preceded by EMR. Patients with EMR before RFA had worse pre-treatment histology (IMC, 38% vs 6%), shorter BE segment (mean 4.6 vs 5.4 cm) and were less likely to be taking twice-daily PPIs (74% vs 81%) Outcomes stratified by baseline grade of dysplasia

Supplementary Tables, di Pietro et al, National Institute for Health and Care Excellence (NICE) guidance on monitoring and management of Barrett's oesophagus and stage I oesophageal adenocarcinoma

Study	Intervention and comparison	Population	Outcomes	Comments
			At mean (SD) follow-up time: 2.86 (1.53) years for EMR+RFA, 2.76 (1.66) years for RFA alone	
Manner 2014	APC (n=33) Vs Surveillance (n=30) PPI (esomeprazole) was administered in both treatment groups (dosage adjusted to the patients' 24-hour PH-metry finding 40 or 80 mg per day)	Patients in whom focal early Barrett's neoplasia (high-grade neoplasia, n=40 or mucosal cancer, n=23) had been curatively resected by endoscopy (n=63) Mean age (SD; range): 63 (1; 42-79) years Germany	Recurrence (of neoplasia) 2-year follow-up; Mean follow-up (SD, range): ablation group= 28.2 (13.7, 0-44) months; surveillance group= 24.7 (14.8; 0-45) months	RCT
Peerally 2019	ER + APC (n=40) Vs ER+ RFA (n=36) High-dose PPI (twice daily) was	Patients with high-grade dysplasia (n=58) or T1a cancer (n=18); Total n=76 Mean age: 69.7 years	Clearance of high-grade dysplasia/cancer Clearance of Barrett's oesophagus	Multicentre pilot RCT: Barrett's Randomised Intervention for Dysplasia by Endoscopy (BRIDE study); 6 tertiary-care referral centres

Supplementary Tables, di Pietro et al, National Institute for Health and Care Excellence (NICE) guidance on monitoring and management of Barrett's oesophagus and stage I oesophageal adenocarcinoma

Study	Intervention and comparison	Population	Outcomes	Comments
	administered to all patients.	UK	Adverse events (stricture, GI bleeding) (protocol outcome: complications of treatment) 12 months	N=65 completed the trial Study also reports QoL (EQ-5D, QLQ-C30, chest-pain, dysphagia) but not in an extractable format: graph format with no specific scores reported
Pouw 2011	ER-cap; n=42 Vs ER with Multi-band mucosectomy (MBM); n=42	Patients with Barrett's oesophagus with biopsy proven high-grade dysplasia (n=19) and/or early cancer (n=52); Total n=84 Median age (IQR): 70 (63.3-76) years The Netherlands	Complications of treatment: bleeding, perforation During the procedure and 0-48 hours later.	RCT Perforations occurring in the ER-cap group were reported as moderate; perforation occurring in the MBM group was reported as severe Complication severity: moderate (4-10 days hospitalisation, need for repeat endoscopic intervention), severe (>10 days of hospitalisation, intensive care unit admission, need for

Supplementary Tables, di Pietro et al, National Institute for Health and Care Excellence (NICE) guidance on monitoring and management of Barrett's oesophagus and stage I oesophageal adenocarcinoma

Study	Intervention and comparison	Population	Outcomes	Comments
				surgery), fatal (death attributable to procedure <30 days or longer with continuous hospitalization)
Shaheen 2009	RFA Vs Sham endoscopic procedure All patients received 40 mg of esomeprazole twice daily throughout the trial	Patients with dysplastic Barrett's oesophagus (n=127; n=63 had high-grade dysplasia and were included in this review) Mean age (range): 66.37 (49-80) USA	Complete eradication of dysplasia Complete eradication of intestinal metaplasia At 12 months	Multicentre RCT (19 sites) Includes people with low-grade dysplasia but randomisation and results were stratified by grade of dysplasia; only results relevant to the high-grade dysplasia population are presented in the present review.
Terheggen 2017	ESD (n=20) Vs EMR (n=20) PPI was orally administered in double standard during the study period.	Barrett's oesophagus patients with high-grade intraepithelial neoplasia (HGIN, N=9) or early adenocarcinoma (EAC) (n=31); Total n=40	Complete resection of high-grade intraepithelial neoplasia or adenocarcinoma Curative resection (histologically complete resection of HGIN/ mucosal EAC or EAC with	RCT Pre-treatment histology: ESD: n=5 high-grade intraepithelial neoplasia, n=15 adenocarcinoma; EMR: n=4 high-grade intraepithelial

Supplementary Tables, di Pietro et al, National Institute for Health and Care Excellence (NICE) guidance on monitoring and management of Barrett's oesophagus and stage I oesophageal adenocarcinoma

Study	Intervention and comparison	Population	Outcomes	Comments
		Mean age (SD): 64.5 (11.52) years Germany	low-risk superficial submucosal invasion) Adverse events (perforation, mediastinitis, temporary chest discomfort, severe adverse events) Up to 30 days after the procedure Complete remission of neoplasia after initial resection Complete remission of intestinal neoplasia Recurrent neoplasia Conversion of endoscopic treatment to surgery (Referral to elective surgery)	neoplasia, n=16 adenocarcinoma Severe adverse events: that caused prolongation of hospitalisation and/or its management required additional therapeutic interventions, 30-day mortality

Supplementary Tables, di Pietro et al, National Institute for Health and Care Excellence (NICE) guidance on monitoring and management of Barrett's oesophagus and stage I oesophageal adenocarcinoma

Study	Intervention and comparison	Population	Outcomes	Comments
			>30 day follow-up (mean (SD) follow-up was 22.6 (7.8) months for the ESD and 23.6 (5) months for the EMR group.	
Thota 2018	RFA (n=73) Vs Cryotherapy (cryo-spray; n=81)	Barrett's oesophagus patients with dysplasia or intramucosal carcinoma; N=154 USA	Mortality (all-cause and disease specific) Complete eradication of intestinal metaplasia Complete eradication of dysplasia Recurrence 2-year follow up	Retrospective observational study Indirectness: Includes 23/154 (15%) had low-grade dysplasia at baseline
van Vilsteren 2011	Focal ER (ER-cap technique) + Stepwise radical ER (SRER) (n=25)	Barrett's oesophagus patients with high-grade dysplasia	Complete histological response for	Multi-centre RCT (3 centres)

Supplementary Tables, di Pietro et al, National Institute for Health and Care Excellence (NICE) guidance on monitoring and management of Barrett's oesophagus and stage I oesophageal adenocarcinoma

Study	Intervention and comparison	Population	Outcomes	Comments
	Vs Focal ER (ER-cap technique) + RFA (n=22)	(n=19) or early cancer (n=28); Total n=55 Median age (range): 68 (45-88) years Germany, The Netherlands	neoplasia (CR-neoplasia) Complete histological response for intestinal metaplasia (CR-IM) Recurrence Complications (severe, moderate, mild) Median (IQR) follow-up from initial treatment 24 (18-29) months; from final treatment sessions 18 (11-23) months	Recurrence notes was of early cancer, requiring ER.

Supplementary Tables, di Pietro et al, National Institute for Health and Care Excellence (NICE) guidance on monitoring and management of Barrett's oesophagus and stage I oesophageal adenocarcinoma

Supplementary Table 10: Summary of studies included in the evidence review comparing oesophagectomy and endoscopic resection for treatment of stage I adenocarcinoma

Study (n)	Intervention	Comparator	Inclusion/exclusion criteria	Stage	Grade of differentiation	LVI	R0/R1	Submucosal grades
Li, 2017 N=23	oesophagectomy was performed by Ivor-Lewis or transhiatal technique	Endoscopic mucosal resection (EMR)	Inclusion: Patients with intramucosal carcinoma and Barrett's oesophagus from a single-centre pathology specimen database; undergoing EMR or oesophagectomy; Adenocarcinoma Exclusion: Patients with invasive disease not amenable to endoscopic treatment (deeper than T1sm1 or node positive) were excluded	All T1a or T1b. T1a 92% in Sx group and 91% in endo group. Taken as T1a overall	Mostly well differentiated (67% Sx, 82% endo)	none	No data	Only 2 submucosal cases: both sm1.
Pacifico, 2003 N=88	Oesophagectomy – no details were provided.	EMR followed by photodynamic therapy (PDT) about 1 month later	Inclusion: All patients with Barretts Oesophagus and adenocarcinoma. The stage of adenocarcinoma was determined by EUS and histology of the EMR specimen if surgery was not performed and by histopathologic staging following esophagectomy. Patients who were considered to have mucosal disease by EUS and/or found to be surgical stage 0	62/64 T1 in Sx group, and 24/24 T1 in endo group. Taken as 'mixed' T1 as no sub-grouping for T1a and T1b.	No data	No data	No data	No data

Supplementary Tables, di Pietro et al, National Institute for Health and Care Excellence (NICE) guidance on monitoring and management of Barrett's oesophagus and stage I oesophageal adenocarcinoma

Study (n)	Intervention	Comparator	Inclusion/exclusion criteria	Stage	Grade of differentiation	LVI	R0/R1	Submucosal grades
			or 1 were included in the study. Exclusion: Patients with lymph node metastasis					
Pech, 2011 N=114	Transthoracic oesophageal resection. En-bloc oesophagectomy after open or laparoscopic gastric mobilisation	EMR. After endoscopic resection, following later follow up and remission of neoplasia, patients underwent ablation of the remaining nondysplastic epithelium using argon plasma coagulation	Inclusion: Patients with mucosal Barretts adenocarcinoma treated with surgery or endoscopy. Exclusion: Patients with ypT1 after neoadjuvant chemoradiation	All T1a	Most graded 1 or 2: 36/38 Sx group, 72/74 endo group	No lymph or vascular invasion	No data	Not applicable
Prasad, 2009 N=178	Oesophagectomy was via the transthoracic or the transhiatal route.	The initial technique was a variceal ligation method in which a Bard Six-Shooter and suction was used to retract the lesion of interest and had	Inclusion: Patients were either referred for endoscopic treatment of mucosal EAC to the Barrett's oesophagus Unit by physicians or were under surveillance for HGD in the BE Unit. All patients seen in the BE Unit for endoscopic therapy had either received	All T1a	No data	4 in Sx group had metastatic lymphadenopathy ; none in endo gp	No data	Not applicable

Supplementary Tables, di Pietro et al, National Institute for Health and Care Excellence (NICE) guidance on monitoring and management of Barrett's oesophagus and stage I oesophageal adenocarcinoma

Study (n)	Intervention	Comparator	Inclusion/exclusion criteria	Stage	Grade of differentiation	LVI	R0/R1	Submucosal grades
		a band placed over it to create a pseudopolyp, which was then resected. Beginning in April 2000, EMR was performed. PDT was administered at a later date after the achievement of histologic remission.	consultation with thoracic surgeons at the Mayo Clinic or at their local hospitals. Patients referred for esophagectomy were usually referred directly by their physicians or were elected to undergo surgery after initial evaluation at the BE Unit. Barrett's oesophagus and mucosal OAC Exclusion: Submucosal carcinoma					
Schmidt, 2016 N=85	Oesophagectomy - surgical patients underwent transthoracic oesophageal resections in 94 % and transhiatal resections in 6 %.	Endoscopic treatments - in patients undergoing endoscopic therapy, all visible neoplastic lesions were treated with EMR. Residual Barrett's oesophagus mucosa was subsequently treated with	Inclusion: All Barrett's patients presenting with clinically T1a OAC; undergone oesophageal resection or endoscopic treatment of Barrett's oesophagus Exclusion: Patients with high-grade dysplasia, submucosal invasion (T1b EAC), and those undergoing neoadjuvant therapy.	T1a	No data	4 with nodal mets in Sx group; 1 with pT2N1 in endo group.	R1: 48% in Sx group and 14% in endo group	Not applicable

Supplementary Tables, di Pietro et al, National Institute for Health and Care Excellence (NICE) guidance on monitoring and management of Barrett's oesophagus and stage I oesophageal adenocarcinoma

Study (n)	Intervention	Comparator	Inclusion/exclusion criteria	Stage	Grade of differentiation	LVI	R0/R1	Submucosal grades
		ablative techniques or radical mucosectomy depending on the length of the Barrett's oesophagus. Photodynamic therapy was utilized to 2006 with radiofrequency ablation subsequently being the most common ablative therapy. APC was selectively applied.						
Zehetner, 2011 N=66 (in review analysis, at stage T1a)	Oesophagectomy was performed as a transthoracic en bloc, transhiatal, minimally invasive, or vagus-sparing resection. Reconstruction in all cases was with a	EMR. Occasionally, argon plasma coagulation was used to touch up small areas, typically at the time of endoscopic resection of a	Inclusion: All patients with high-grade dysplasia or intramucosal adenocarcinoma treated endoscopically or by an esophagectomy Exclusion: Patients with tumors invasive into the submucosa were excluded, but lymphovascular invasion	In overall paper there were 21% in Sx group at stage T0 and 55% in endo group at stage T0. <u>However, it was possible to extract data separately for T1a</u>	No data	1 lymph node met in Sx group	R0: 100%	Not applicable

Supplementary Tables, di Pietro et al, National Institute for Health and Care Excellence (NICE) guidance on monitoring and management of Barrett's oesophagus and stage I oesophageal adenocarcinoma

Study (n)	Intervention	Comparator	Inclusion/exclusion criteria	Stage	Grade of differentiation	LVI	R0/R1	Submucosal grades
	tubularized gastric pull-up.	lesion. In some patients immediately after endoscopic resection of a nodule, the surrounding Barrett's mucosa was ablated with the Halo 90 device. Ablation was not performed over areas just resected.	or poor differentiation in an intramucosal lesion did not deter endoscopic therapy	<u>stage by analysis of the text.</u> <u>Therefore, only T1a patients were included in the analyses for this review.</u>				

Supplementary Tables, di Pietro et al, National Institute for Health and Care Excellence (NICE) guidance on monitoring and management of Barrett's oesophagus and stage I oesophageal adenocarcinoma

Supplementary Table 11: Summary of studies included in the evidence review for anti-reflux surgery to reduce disease progression

Study	Intervention and comparison	Population	Outcomes	Comments
Attwood 2008 (LOTUS trial)	Laparoscopic Nissen fundoplication (N=32) Vs Medical treatment with esomeprazole 20 mg od for their disease (N=28)	Adults aged 18–70 years with confirmed GERD, with or without Barrett's oesophagus. Only results relevant to people with Barrett's oesophagus (N=60) have been extracted in the present review. Mean age: 47 years (Surgical arm) and 50 years (Medical arm) Europe	Treatment failure (Protocol outcome: adverse events) During a 3-year follow-up	Long-Term Usage of Acid Suppression Versus Anti-Reflux Surgery trial (LARS)
Parrilla 2003	Anti-reflux surgery (N=58) short Nissen fundoplication (1.5–3 cm) over a 48 to 50 French bougie through a laparotomy. Vs Medical treatment for all patients (N= 43) consisted of hygiene, diet, and postural measures as well as antisecretory drugs: H2 antagonists (150 mg twice daily) initially and omeprazole (20 mg twice daily) from 1992 onward for all patients.	Patients diagnosed with Barrett's oesophagus (including short Barrett's segment with intestinal metaplasia) (N=101) Median age(range): Surgical arm: 43 years (10–71) Medical arm: 50 years (12–78) Spain	Progression to high-grade dysplasia Dysplasia de novo (Progression to any grade dysplasia from non-dysplastic Barrett's oesophagus) Complications (Splenectomy, inability to belch or vomit, and mild and transitory postoperative dysphagia) Median (range) 5 years follow-up (range 1–18)	N=91 had intestinal metaplasia; N=8 had low-grade dysplasia. Low grade dysplasia: Medical treatment: n=3 (7%) Anti-reflux surgery: n=5 (9%) Intestinal metaplasia: Medical treatment: n=39 (91%) Anti-reflux surgery: n= 52 (90%) Downgraded for indirectness as children are included in the study participants.

Supplementary Tables, di Pietro et al, National Institute for Health and Care Excellence (NICE) guidance on monitoring and management of Barrett's oesophagus and stage I oesophageal adenocarcinoma