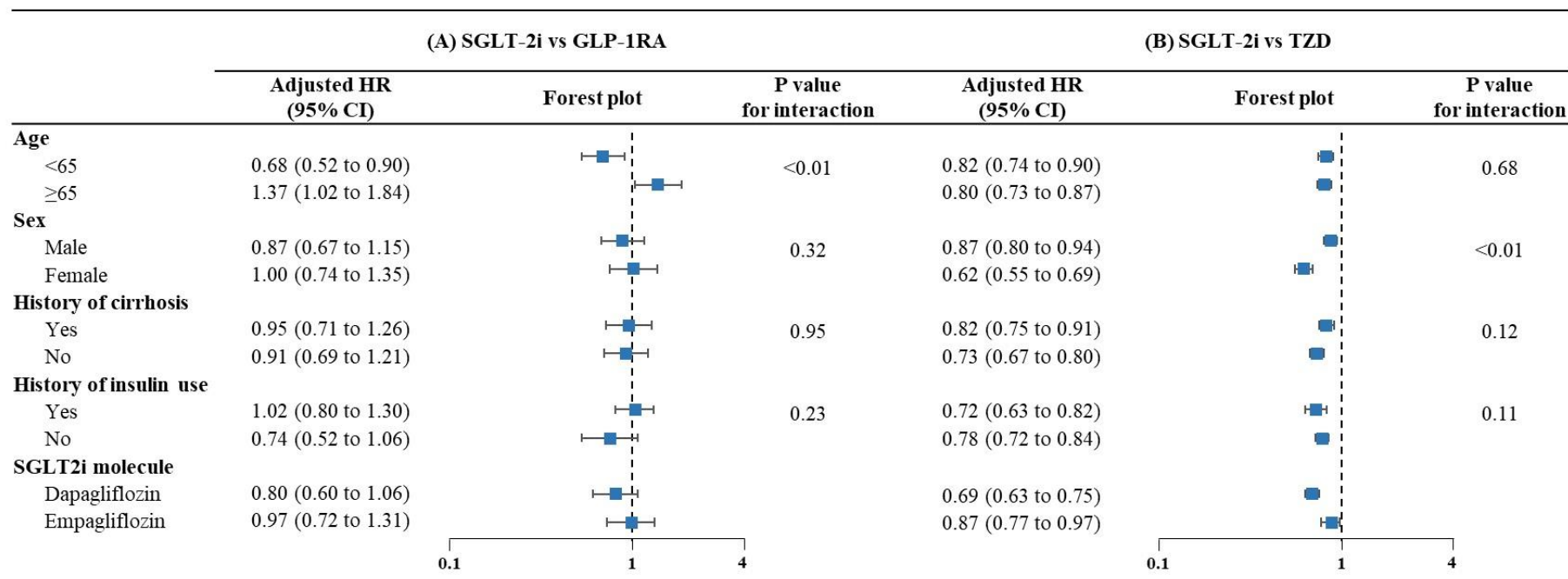


**Figure 1.** Hepatic decompensation events in 1:1 propensity score matched initiators of (A) SGLT2 inhibitors vs. GLP-1 receptor agonists, and (B) SGLT-2 inhibitors vs. Thiazolidinediones.

	Exposure		Comparator		RD per 1000 PYs (95% CI)	Adjusted HR (95% CI)	Forest Plot
	Events	IR per 1000 PYs (95% CI)	Events	IR per 1000 PYs (95% CI)			
<b>(A) SGLT-2i vs GLP-1RA</b>							
<b>Primary outcome</b>							
Hepatic decompensation events	237	10.61 (9.34 to 12.05)	173	14.21 (12.24 to 16.50)	-3.60 (-6.12 to -1.09)	0.93 (0.76 to 1.14)	
<b>Secondary outcome</b>							
Ascites	180	8.03 (6.94 to 9.30)	108	8.84 (7.32 to 10.68)	-0.81 (-2.85 to 1.23)	1.12 (0.88 to 1.43)	
Esophageal varices with bleeding	14	0.62 (0.37 to 1.05)	10	0.82 (0.44 to 1.52)	-0.20 (-0.80 to 0.41)	0.80 (0.35 to 1.83)	
Hepatic failure	68	3.02 (2.38 to 3.83)	64	5.24 (4.10 to 6.69)	-2.21 (-3.69 to -0.74)	0.71 (0.50 to 1.00)	
Liver transplant	5	0.22 (0.09 to 0.53)	17	1.39 (0.86 to 2.23)	-1.17 (-1.85 to -0.48)	0.25 (0.09 to 0.70)	
Liver-cause death	6	0.27 (0.12 to 0.59)	8	0.65 (0.33 to 1.30)	-0.39 (-0.89 to 0.11)	0.45 (0.15 to 1.32)	
All-cause death	114	5.05 (4.20 to 6.07)	56	4.57 (3.51 to 5.93)	0.48 (-1.03 to 2.00)	1.24 (0.90 to 1.72)	
<b>(B) SGLT-2i vs TZD</b>							
<b>Primary outcome</b>							
Hepatic decompensation events	1666	7.64 (7.28 to 8.02)	1954	10.18 (9.73 to 10.64)	-2.53 (-3.12 to -1.95)	0.77 (0.72 to 0.82)	
<b>Secondary outcome</b>							
Ascites	1150	5.25 (4.96 to 5.57)	1380	7.16 (6.79 to 7.54)	-1.90 (-2.39 to -1.42)	0.75 (0.70 to 0.82)	
Esophageal varices with bleeding	120	0.55 (0.46 to 0.65)	138	0.71 (0.60 to 0.84)	-0.17 (-0.32 to -0.01)	0.77 (0.60 to 0.98)	
Hepatic failure	579	2.64 (2.43 to 2.86)	676	3.50 (3.24 to 3.77)	-0.86 (-1.20 to -0.52)	0.77 (0.69 to 0.87)	
Liver transplant	29	0.13 (0.09 to 0.19)	35	0.18 (0.13 to 0.25)	-0.05 (-0.13 to 0.03)	0.79 (0.48 to 1.29)	
Liver-cause death	68	0.31 (0.24 to 0.39)	98	0.51 (0.41 to 0.62)	-0.20 (-0.32 to -0.07)	0.61 (0.45 to 0.84)	
All-cause death	948	4.31 (4.04 to 4.59)	1155	5.95 (5.62 to 6.31)	-1.65 (-2.09 to -1.21)	0.73 (0.67 to 0.79)	

**Abbreviations:** CI, confidence interval; GLP-1RA, glucagon-like peptide 1 receptor agonists; HR, hazard ratio; IR, incidence rate; PY, person-year; RD, rate difference; SGLT-2i, sodium-glucose cotransporter 2 inhibitors; TZD, thiazolidinediones

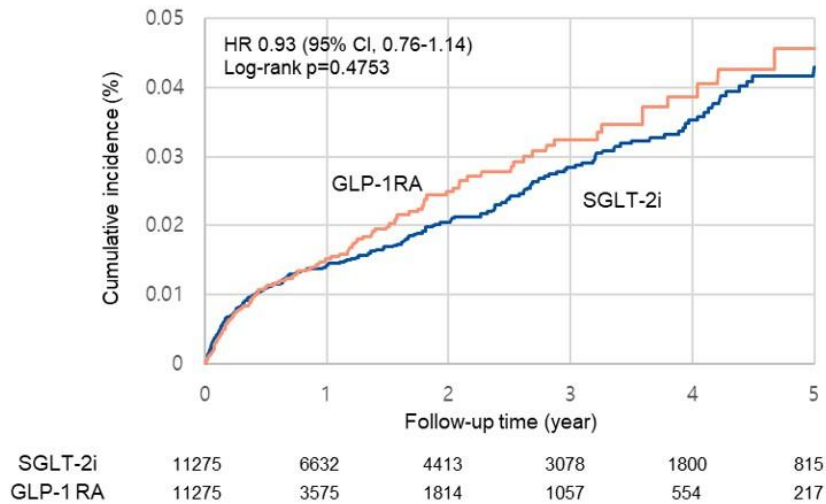
**Figure 2.** Results of subgroup analyses for hepatic decompensation events in 1:1 propensity score matched initiators of (A) SGLT2 inhibitors vs. GLP-1 receptor agonists, and (B) SGLT-2 inhibitors vs. Thiazolidinediones.



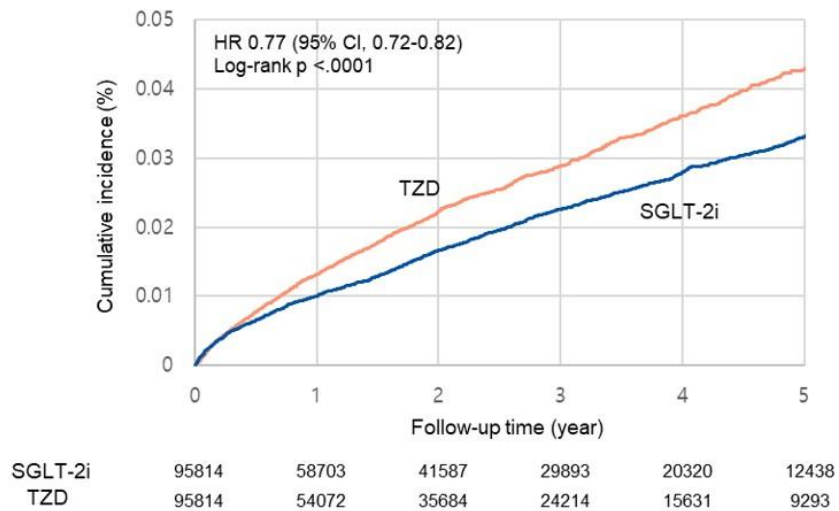
**Abbreviations:** CI, confidence interval; GLP-1RA, glucagon-like peptide 1 receptor agonists; HR, hazard ratio; IR, incidence rate; PY, person-year; RD, rate difference; SGLT-2i, sodium-glucose cotransporter 2 inhibitors; TZD, thiazolidinediones

**Figure 3.** Cumulative incidence of hepatic decompensation events in 1:1 propensity score matched initiators of (A) SGLT2 inhibitors vs. GLP-1 receptor agonists, and (B) SGLT-2 inhibitors vs. Thiazolidinediones.

**A SGLT-2i vs GLP-1RA**



**B SGLT-2i vs TZD**



**Abbreviations:** CI, confidence interval; GLP-1RA, glucagon-like peptide 1 receptor agonists; HR, hazard ratio; SGLT-2i, sodium-glucose cotransporter 2 inhibitors; TZD, thiazolidinediones