

MSD applied to the construction of the British Library basement: a multi-stage excavation in London Clay

Jamie J. Crispin ^a, Abigail H. Bateman ^b, Elia Voyagaki ^b, Alexandra Campbell^c, George Mylonakis ^{b,d}, Malcolm D. Bolton^e, and Paul J. Vardanega ^b

^aDepartment of Engineering Science, University of Oxford, Oxford, UK; ^bSchool of Civil, Aerospace and Design Engineering, University of Bristol, Bristol, UK; ^cDepartment of Mechanical Engineering, University of Bristol, Bristol, UK (formerly); ^dDepartment of Civil Infrastructure and Environmental Engineering, Khalifa University, Abu Dhabi, UAE; ^eDepartment of Engineering, University of Cambridge, Cambridge, UK

Corresponding author: Paul J. Vardanega (email: p.j.vardanega@bristol.ac.uk)

Abstract

This note presents the application of the mobilisable strength design (MSD) method to the monitoring results of the multi-propped excavation in the south area of the British Library Euston, constructed in a highly overconsolidated stiff clay deposit. The MSD method is an energy-based approach (a nonlinear finite-element method for a single-degree-of-freedom soil-wall system) introduced to develop a simplified design methodology that satisfies both ultimate and serviceability limit states. Wall displacement predictions based on the MSD method are compared with considerable field monitoring data. The sensitivity of the method to reasonable variations in input parameters is considered. A spreadsheet and python code demonstrating the MSD analysis from this paper are provided in the online supplement alongside details of the mathematical formulation.

Key words: mobilisable strength design (MSD), braced excavation, British Library Euston

Introduction

The mobilisable strength design (MSD) method for analysis of geotechnical structures offers a dependable yet quick and simple method to quantify ground movements caused by geotechnical construction. This method provides a robust and relatively simple analysis (suitable for spreadsheet calculations) that allows the incorporation of soil material nonlinearity and is based on routinely determined parameters and clear assumptions. The MSD method was originally developed at the University of Cambridge from displacement mechanisms observed during centrifuge testing (Powrie 1986; Bolton and Powrie 1987, 1988) and is underpinned by principles of similarity introduced by Skempton (1951). This design process was developed for various geotechnical constructions including bridge abutments (Bolton et al. 1990; Bolton and Sun 1991a), shallow and deep foundations (Bolton and Sun 1991b; Osman and Bolton 2004a, 2005; Klar and Osman 2008; Bouzid et al. 2013), and tunnelling (Osman et al. 2006).

Additionally, MSD principles have been used to analyse deep excavations, inspired by earlier work developing approximate analytical methods (e.g., Clough et al. 1989; O'Rourke 1993). These include cantilever retaining walls (Osman and Bolton 2004b, 2004c; Li and Bolton 2014; Wang et al. 2018; Deng and Haigh 2022), braced excavations (Osman and Bolton 2006a, 2006b), flexible walls (Diakoumi and Powrie 2013; Deng et al. 2021; Madabhushi

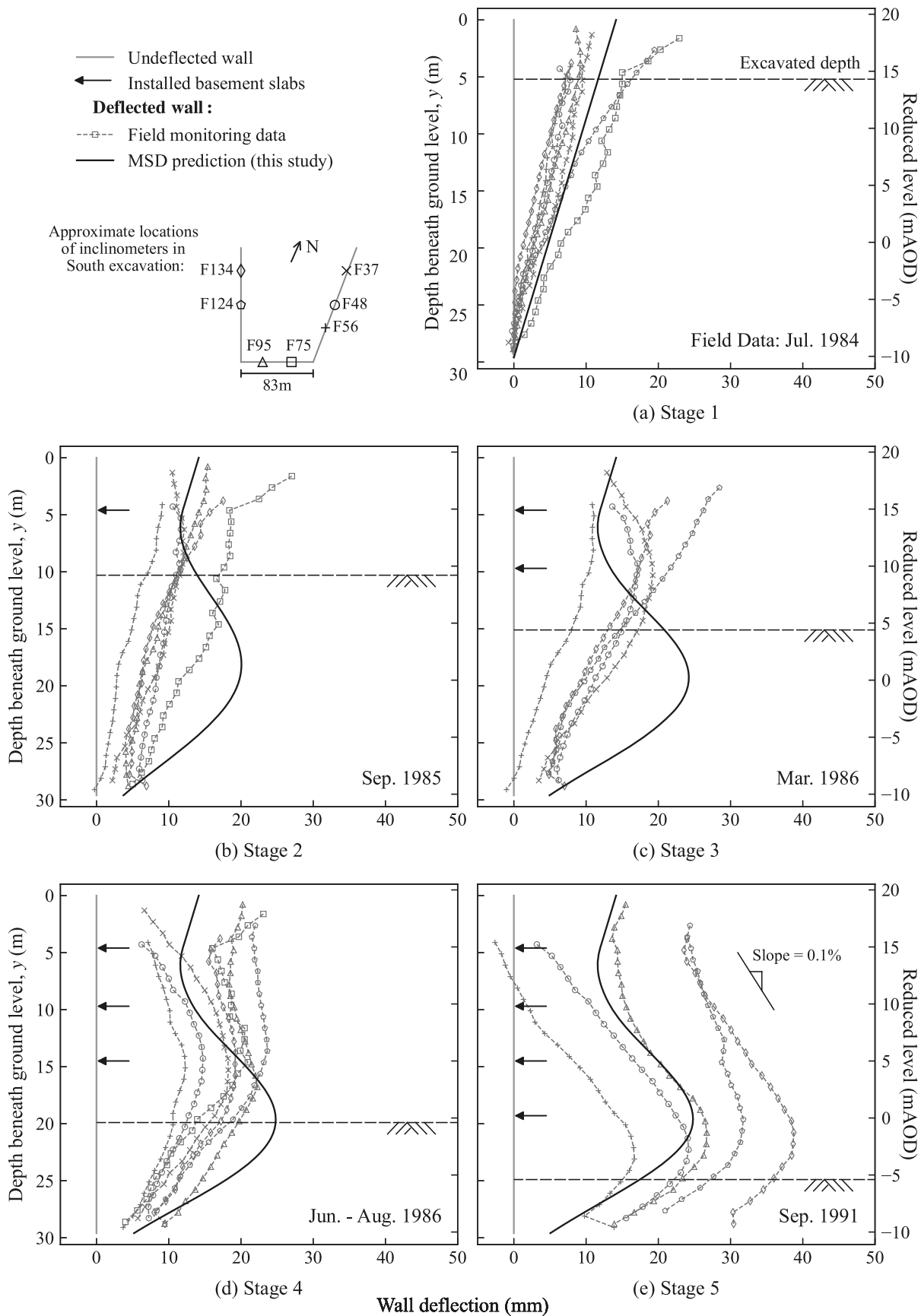
and Haigh 2022), and narrow excavations (Lam and Bolton 2011).

In comparison to finite element analysis (FEA), this approach relies on an assumed displacement mechanism, is limited to simpler constitutive behaviour (e.g., cannot include stress dependent stiffness directly), and would require reformulating to incorporate additional problem elements (such as flexible props and wall roughness). However, it offers a quick and simple alternative to FEA, particularly during early stages of design, to predict displacements from simplified nonlinear soil constitutive models (or even directly from site-specific element test data) with a much simpler mesh, boundary conditions, and calculations that can be carried out using a spreadsheet.

The validity of the MSD method has previously been investigated by comparison with FEA (e.g., Lam and Bolton 2011) and also in the context of deep excavation design practice in Sweden by Bjureland (2013). Bolton et al. (2014) used the database of excavation records from the thesis of Xu (2007) along with the principles presented in Lam and Bolton (2011) to develop pertinent dimensionless groups and hence produce new design charts for predicting excavation performance in soft Shanghai soils. Similarly, Deng et al. (2021) modified the MSD approach and successfully applied it to case studies in Dublin Boulder Clay and Oslo Clay.

In this note, predictions of wall displacements using the MSD method are compared with field monitoring data from

Fig. 1. Predicted wall displacements (black; this study) against field monitoring data (grey; data and location sketch from Simpson and Vardanega 2014, including Appendix W3) for each excavation stage. Soil parameters are given as mean values in Table 1 ($EI = 2192 \text{ MNm}^2/\text{m}$, $\alpha_\lambda = 1.2$).



Can. Geotech. J. Downloaded from cdnsicepub.com by NATIONAL OCEANOGRAPHY CTR on 11/25/24

the staged construction of the British Library Euston excavation. A preliminary analysis of this case study using the MSD method is presented in [Campbell \(2017\)](#). The MSD method employed here is based on that presented in [Lam and Bolton \(2011\)](#) (extending the work of [Osman and Bolton 2006b](#)) with some minor simplifications (primarily no discretisation in horizontal cells of the mechanism with depth).

Case study: British Library Euston excavation

This high-profile project was completed many years ago and is described in detail by [Ryalls and Stevens \(1990\)](#), [Stevens and Ryalls \(1990\)](#), and [St John Wilson \(1998\)](#). Further details related to the instrumentation and anchorage design for the project are provided by [Loxham et al. \(1990\)](#) and [Raison \(1987a, 1987b, 1988\)](#). The wall/excavation details and monitoring data are detailed by [Simpson and Vardanega \(2014\)](#) including detailed site progress drawings in Appendix W5 of this publication. This note examines the excavation and staged construction of the South area (see plan view in [Fig. 1](#)), detailed as follows:

- 1) A wall length of 29.6 m is supporting a 25 m excavation below ground level at 19.5 metres above ordinance datum (mAOD). The wall construction is detailed in [Ground Engineering \(1984\)](#).
- 2) The excavation was carried out top-down in five stages to the following reduced levels [14.3, 9.2, 4.4, -0.4, and -5.4] (mAOD).
- 3) Slabs of 0.4 m thickness were constructed 0.6 m above each excavation level, which act as props supporting the wall.

Soil properties

The wall was constructed in ~2 m of fill, 18 m of London Clay, and 10 m of Lambeth Group deposits (described as clay) which continue below the base of the wall ([Simpson and Vardanega 2014](#)). Analysis of some of the soil properties for the site in question is presented in [Simpson et al. \(1981\)](#) with further analysis conducted in [Vardanega et al. \(2012a, 2012b\)](#) as explained in [Simpson and Vardanega \(2014\)](#). London Clay has been the subject of many high-quality testing studies (e.g., [Gasparre 2005](#); [Gasparre et al. 2007a, 2007b](#); [Hight et al. 2007](#); [Kamal et al. 2014](#)). Therefore, as the London Clay and Lambeth Group are similar materials and the former makes up most of the excavated depth and likely dominates the response, London Clay properties are used as representative values throughout the excavation. For this analysis, a power-law soil constitutive relationship was selected to describe the soil behaviour ([Vardanega and Bolton 2011a, 2011b](#)):

$$(1) \quad \frac{\tau}{s_u} = \frac{1}{2} \left(\frac{\gamma}{\gamma_{50}} \right)^b$$

where τ and γ are the mobilised soil engineering shear stress and strain, respectively, s_u is the soil undrained shear strength, γ_{50} is the soil shear strain when 50% of the shear

Table 1. London Clay soil properties (depth y is measured in metres).

Parameter	Mean (μ)	Variation considered
Saturated unit weight, γ_{sat} (kN/m ³) [*]	20	19 (Low value) 21 (High value)
Undrained shear strength, s_u (kPa) [†]	40.0 + 11.0 y (eye-fit)	39.0 + 9.9 y (25th percentile) 24.8 + 13.9 y (Triaxial data only)
Nonlinearity exponent, b [‡]	0.58	0.47 ($\mu - 1\sigma$) 0.69 ($\mu + 1\sigma$)
Shear strain at 50% of s_u , γ_{50} [‡]	7.0×10^{-3}	5.1×10^{-3} ($\mu - 1\sigma$) 8.9×10^{-3} ($\mu + 1\sigma$)

^{*}Based on a review of the datasets presented in [Hight et al. \(2003\)](#).

[†][Vardanega et al. \(2012a\)](#).

[‡][Vardanega and Bolton \(2011a\)](#).

strength is mobilised, and b is a soil nonlinearity exponent. [Vardanega and Bolton \(2011a\)](#) calibrated this model against high-quality test data in London Clay (parameters given in [Table 1](#)). Different soil parameters could be selected for different zones within the assumed deformation mechanism dependent on their expected shear failure mode (discussed further in [Osman and Bolton 2006b](#) and [Lam and Bolton 2011](#), see also [Beesley and Vardanega 2020](#)). However, for simplicity, in this analysis, single b and γ_{50} values were selected.

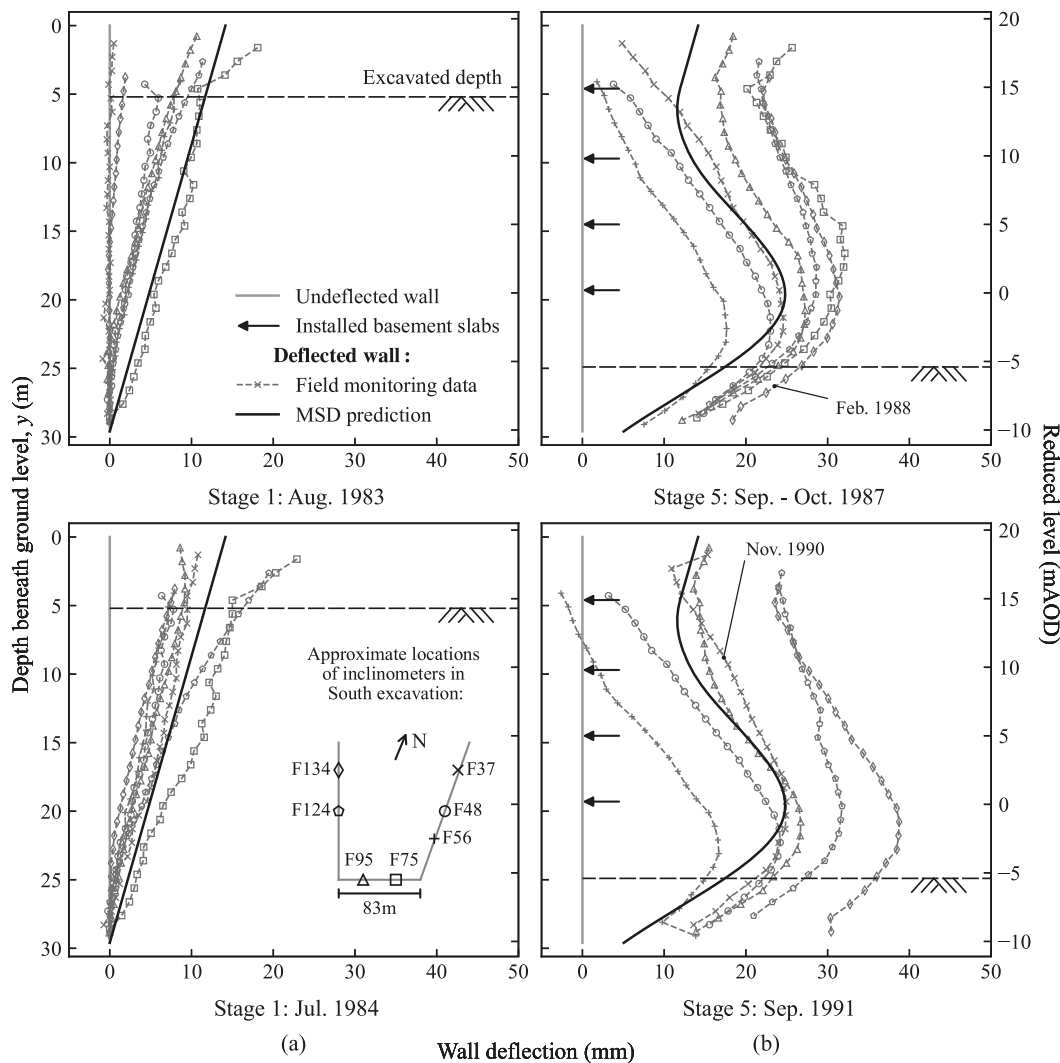
Application of MSD

Using the mean (μ) soil parameters from [Table 1](#), the MSD approach (detailed in the online supplement) was applied to predict the wall displacements in the South excavation of the British Library Euston. The first stage of excavation (Stage 1) is assumed to result in the rotation of the wall only. In subsequent stages, a slab is first installed, then further excavation is carried out, which is assumed to result in cumulative bulging of the wall below the slab level. The predicted wall displacements are plotted in [Fig. 1](#) against field monitoring data (where available) from inclinometers installed in the wall ([Simpson and Vardanega 2014](#), Appendix W3). Anomalous data from the top of some inclinometers have been excluded in accordance with [Simpson and Vardanega \(2014\)](#).

[Figure 1](#) shows reasonable predictions of the wall displacements, particularly for Stages 1 and 5. The variation in the intermediate stages is likely due to flexibility in the constructed slabs which are modelled in the MSD analysis as perfectly rigid lateral supports. This results in further wall rotation during these stages that is not accounted for in the MSD solution. In addition to this, piles installed within the excavation likely reduced the heave observed, which is not considered in this MSD analysis. The incremental maximum wall displacement calculated for the final stage (Stage 5) is negative (-0.6 mm). This is due to the method being inherently approximate and is considered to be negligible.

The field monitoring measurements for Stages 1 and 5 plotted in [Fig. 1](#) were taken ~1 and 4 years, respectively, after the corresponding stage of excavation was completed. The effect of time on the wall displacements is shown in [Fig. 2](#) for Stages 1 and 5 (where suitable data are available). Generally, over time, the maximum wall displacements increase, and the

Fig. 2. Effect of time after excavation on the field monitoring data (grey; data and location sketch from [Simpson and Vardanega 2014](#), including Appendix W3) for (a) Stage 1 (excavation completed May 1983) and (b) Stage 5 (excavation completed August 1987). Soil parameters are given as mean values in [Table 1](#) ($EI = 2192 \text{ MNm}^2/\text{m}$, $\alpha_\lambda = 1.2$).



location of maximum bulging moves down the wall. This may also explain some of the variations between predicted and measured results in Stages 2, 3, and 4 observed in [Fig. 1](#). For these stages, field monitoring data are only available ~ 1 – 3 months after each excavation was completed.

Sensitivity to parameter variability

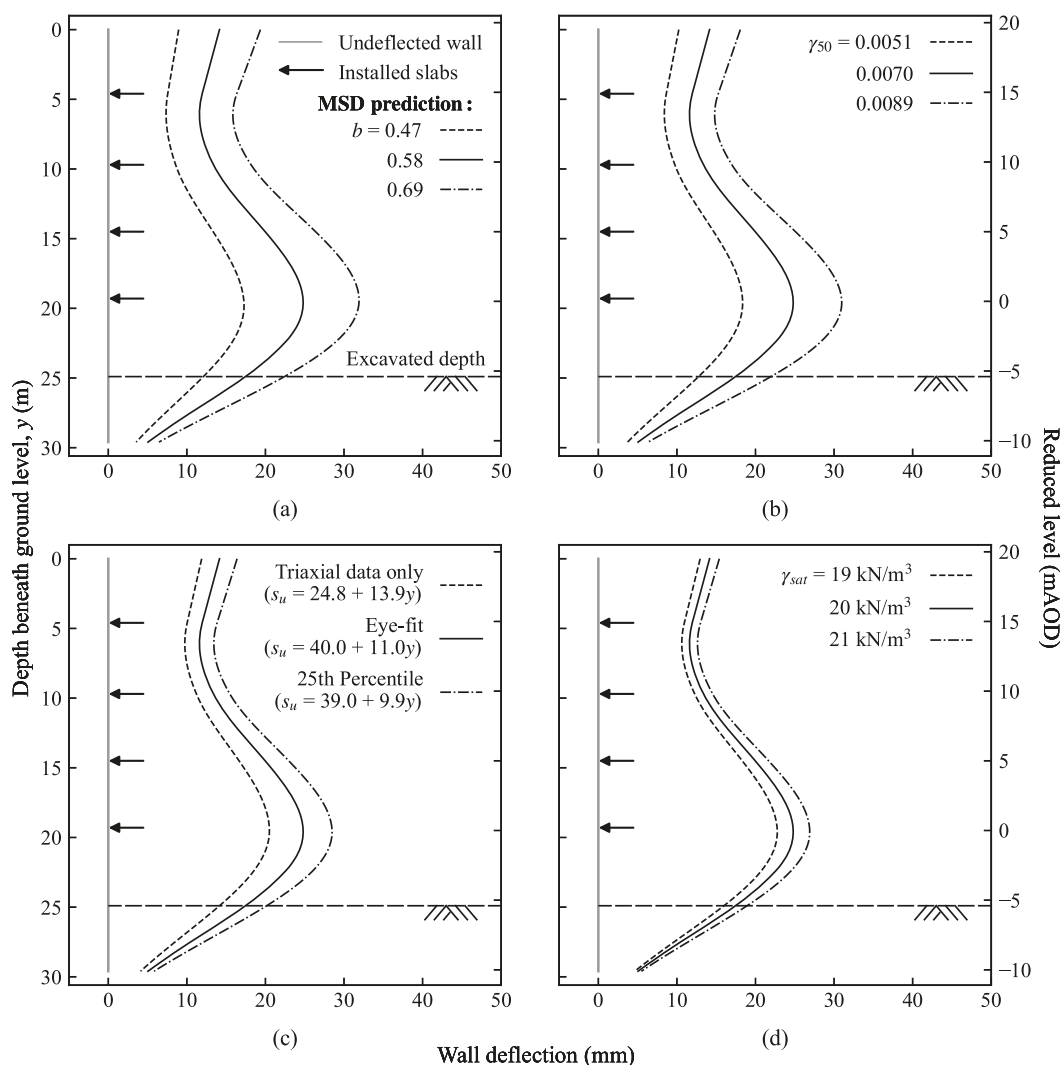
The impact of varying b and γ_{50} by one standard deviation, σ , from the mean, μ , (obtained from the results presented in [Vardanega and Bolton 2011a](#)) on the predicted wall displacements is shown in [Figs. 3a](#) and [3b](#), respectively. The maximum wall displacements at Stage 5 can vary by up to 30% due to changing the b value $\pm 1\sigma$ and 26% due to changing the γ_{50} value $\pm 1\sigma$. This highlights the importance of having either site-specific triaxial test deformation data or a suitable database of similar test results in the same material (as used here) with which to fit the constitutive model ([eq. 1](#)). The mobilisation factor [$\beta_m = \tau/s_u$], calculated using [eq. 1](#) with the average shear strain within the mechanism, is around 0.2.

This means that the power-law soil model is near the limit of the recommended fitting range and, for smaller excavations or similar excavations in stiffer soil, an alternative simplified soil model (e.g., a modified hyperbolic model) may be more suitable.

The different s_u lines provided in [Table 1](#) were fitted by [Vardanega et al. \(2012a\)](#) from site-specific test data in London Clay. The impact of the s_u lines employed on the predicted wall displacement in Stage 5 is shown in [Fig. 3c](#). Similarly, the impact of the variations γ_{sat} for London Clay on the predicted wall displacements is shown in [Fig. 3d](#). The impact of each of these two parameter choices is notably lower than that observed for the constitutive model parameters.

The secant pile wall construction is detailed in [Ground Engineering \(1984\)](#). The bending stiffness EI of this section can be calculated with various assumptions; the three considered in this work are illustrated in [Fig. 4a](#). A steel Young's modulus of 210 GPa was used, alongside 31 GPa for the concrete (based on a target 90-day strength of 30 MPa, [Ground Engi-](#)

Fig. 3. The effect of the variation of soil parameters on the wall displacements predicted for Stage 5 from the mobilisable strength design (MSD) method. Soil parameters (unless otherwise noted) are given as mean values in Table 1 ($EI = 2192 \text{ MNm}^2/\text{m}$, $\alpha_\lambda = 1.2$).



neering 1984). The different assumptions are shown in Fig. 4b to have minimal effect on the predicted wall displacements, likely due to this excavation being in a stiff clay.

The parameter α_λ , introduced by Osman and Bolton (2006b), is used in this method to describe the fixity at the base of the wall ($1 \leq \alpha_\lambda \leq 2$). This factor is applied to the size of the assumed deformation mechanism (illustrated in Fig. 5a, further details are provided in the online supplement). Selecting this parameter requires the designer to predict the location of maximum wall bending. If $\alpha_\lambda = 1$, the base of the wall is assumed to be fixed in a stiff stratum with zero lateral displacement. Alternatively, if $\alpha_\lambda = 2$, the base of the wall is assumed to be the location of maximum displacement, a reasonable assumption for walls embedded in soft soils (Clough and Reed 1984). Most walls installed in practice will have α_λ values between 1 and 2, but no guidance exists on how to select this value. Prior to construction, similar case studies can be used to estimate α_λ . Then, once the first bulging stage of excavation is completed, a preliminary α_λ value can be estimated from measured wall displacements. For this case

study, a value of $\alpha_\lambda = 1.2$ (used in the above analysis) was empirically determined from the field test results in Stage 2. This value can be updated throughout construction; for this case study, $\alpha_\lambda = 1.4$ may be a better fit based on the observed behaviour after Stage 5. The authors acknowledge that more research into the value of α_λ is needed for the application of this method prior to construction. The effects of α_λ on the predicted wall displacement (Stage 5) are shown in Fig. 5b.

Conclusions

The results of the MSD analysis to predict wall displacements of the British library were compared with previously reported field monitoring data. To this end:

- The mean maximum inclinometer displacement 1 year after the completion of Stage 1 (where available) was 12.3 mm (with a range of 7.8–22.9 mm), compared to a predicted value of 14.2 mm (shown in Fig. 1). The mean maximum inclinometer displacement 4 years after the completion of

Fig. 4. (a) Calculation of the wall stiffness, EI , options (based on information from **Ground Engineering 1984**) and (b) the effect of the variation of EI on the wall displacements predicted for Stage 5 from the mobilisable strength design (MSD) method. Soil parameters are given as mean values in **Table 1** ($\alpha_\lambda = 1.2$).

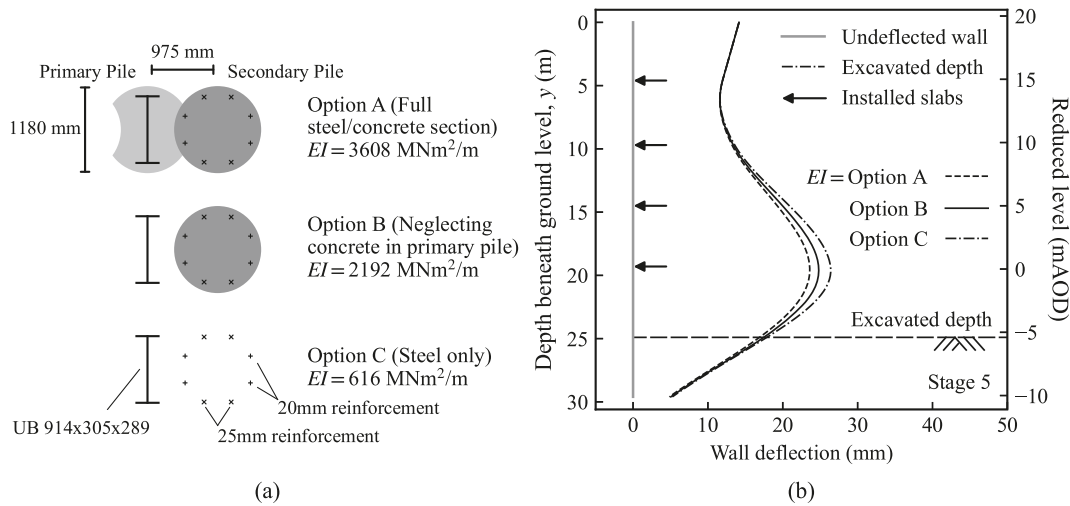
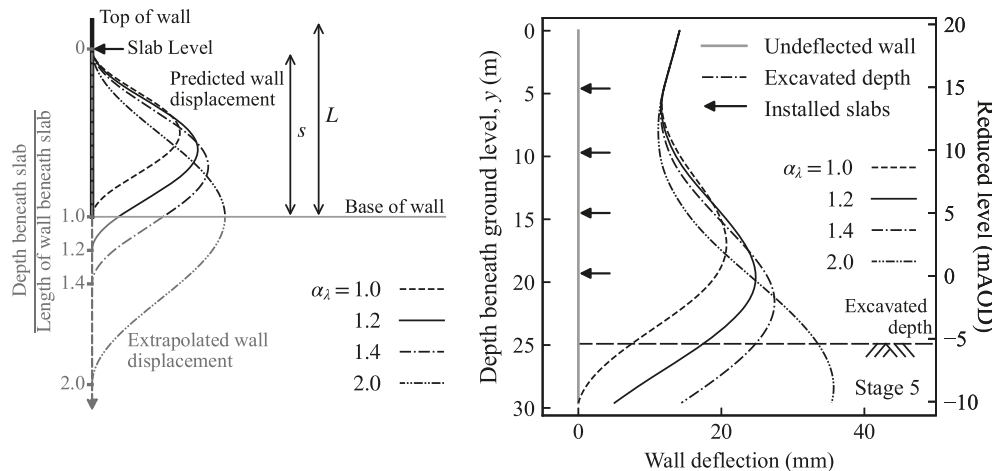


Fig. 5. (a) Illustration on the effect of α_λ on the predicted incremental wall displacements (during bulging) and (b) the effect of α_λ on the wall displacements predicted from the mobilisable strength design (MSD) method. Soil parameters are given as mean values in **Table 1** ($EI = 2192 \text{ MNm}^2/\text{m}$).



Stage 5 (where available) was 27.6 mm (with a range of 16.7–38.8 mm), compared to a predicted value of 24.8 mm. The mean depth to the maximum displacement measured at 21.3 m, compared to a predicted value of 19.7 m.

- The predictions for Stages 2–4 show larger maximum bulging (lower down the wall) than the field monitoring data, possibly due to the modelling assumption of perfectly rigid props and/or the short time after the excavation that field measurements were taken.
- The predicted results better match field monitoring results after they have been given time to deflect after excavation (shown in **Fig. 2**). Investigating how time effects could be incorporated into the MSD method (either directly or indirectly) could be an interesting avenue for future work.
- Realistic variation in the soil undrained shear strength profile, soil saturated unit weight, and the wall bending stiffness had minor effects in the predicted wall displacements. The soil constitutive model properties (b and γ_{50}) had a

greater effect, highlighting the importance of site-specific soil deformation parameters.

- A preliminary α_λ value can be estimated from measured wall displacements in similar excavations or early stages of construction. However, more research into selecting this parameter is required to use this MSD method a priori.

List of symbols

FEA	finite element analysis
mAOD	metres above ordinance datum
MSD	mobilisable strength design
b	soil nonlinearity exponent
s_u	soil undrained shear strength
EI	plane-strain bending stiffness per metre length of the wall
y	depth below the top of the wall

α_λ	modification factor to scale the displacement mechanism for different wall base conditions
β_m	soil shear stress mobilisation factor (τ/s_u)
γ	soil engineering shear strain
γ_{50}	soil shear strain when 50% of the soil shear strength is mobilised
γ_{sat}	soil saturated unit weight
μ	mean value
σ	standard deviation
τ	soil engineering shear stress

Acknowledgements

The first and second authors would like to thank the Engineering and Physical Sciences Research Council (EPSRC) for their support (grant numbers EP/N509619/1 and EP/T517872/1, respectively). GM received partial funding from the transnational access project “ERIES – PoundBac2”, supported by the Engineering Research Infrastructures for European Synergies (ERIES) project (www.eries.eu), which has received funding from the European Union’s Horizon Europe Framework Programme under Grant Agreement No. 101058684. The authors thank Prof. Ashraf Osman for his many helpful discussions over the years and his work on the MSD method.

Article information

History dates

Received: 11 May 2023

Accepted: 19 October 2023

Accepted manuscript online: 30 October 2023

Version of record online: 12 January 2024

Copyright

© 2024 The Author(s). This work is licensed under a [Creative Commons Attribution 4.0 International License](https://creativecommons.org/licenses/by/4.0/) (CC BY 4.0), which permits unrestricted use, distribution, and reproduction in any medium, provided the original author(s) and source are credited.

Data availability statement

As supplementary material to the main paper the authors also provide:

- a summary of the modified MSD method (and required equations) employed in this analysis
- a spreadsheet formulation of the analysis
- a python code of the analysis

Author information

Author ORCIDs

Jamie J. Crispin <https://orcid.org/0000-0003-3074-8493>

Abigail H. Bateman <https://orcid.org/0000-0003-3454-1756>

Elia Voyagaki <https://orcid.org/0000-0001-9991-3149>

George Mylonakis <https://orcid.org/0000-0002-8455-8946>

Paul J. Vardanega <https://orcid.org/0000-0001-7177-7851>

Author contributions

Conceptualisation: JJC, GM, MDB, PJV

Data curation: AHB, PJV

Formal analysis: JJC, AHB, EV

Investigation: JJC, AHB

Methodology: JJC, AHB, EV, AC, GM, MDB

Project administration: PJV

Software: JJC, AHB, EV, AC, GM

Supervision: GM, PJV

Validation: AHB, EV

Visualisation: JJC, AHB

Writing – original draft: JJC, AHB, PJV

Writing – review & editing: JJC, AHB, EV, AC, GM, MDB, PJV

Competing interests

The authors declare there are no competing interests.

Supplementary material

Supplementary data are available with the article at <https://doi.org/10.1139/cgj-2023-0238>.

References

- Beesley, M.E.W., and Vardanega, P.J. 2020. Parameter variability of undrained shear strength and strain using a database of reconstituted soil tests. *Canadian Geotechnical Journal*, **57**(8): 1247–1255. doi:[10.1139/cgj-2019-0424](https://doi.org/10.1139/cgj-2019-0424).
- Bjureland, W. 2013. Analysis of deep excavations using the mobilized strength design (MSD) method. M.Sc. thesis, KTH Royal Institute of Technology, Stockholm, Sweden.
- Bolton, M.D., and Powrie, W. 1987. The collapse of diaphragm walls retaining clay. *Géotechnique*, **37**(3): 335–353. doi:[10.1680/geot.1987.37.3.335](https://doi.org/10.1680/geot.1987.37.3.335).
- Bolton, M.D., and Powrie, W. 1988. Behaviour of diaphragm walls in clay prior to collapse. *Géotechnique*, **38**(2): 167–189. doi:[10.1680/geot.1988.38.2.167](https://doi.org/10.1680/geot.1988.38.2.167).
- Bolton, M.D., Lam, S.Y., Vardanega, P.J., Ng, C.W.W., and Ma, X. 2014. Ground movements due to deep excavations in Shanghai: Design charts. *Frontiers of Structural and Civil Engineering*, **8**(3): 201–236. doi:[10.1007/s11709-014-0253-y](https://doi.org/10.1007/s11709-014-0253-y).
- Bolton, M.D., Springman, S.M., and Sun, H.W. 1990. The behaviour of bridge abutments on clay. A.S.C.E. Conference on the Design and Performance of Retaining Structures, Cornell University. pp. 292–306.
- Bolton, M.D., and Sun, H.W. 1991a. The displacement of bridge abutments on clay. *Proceedings International Conference on Centrifuge Testing*, Boulder, Colorado, Balkema. pp. 91–98.
- Bolton, M.D., and Sun, H.W. 1991b. Designing foundations on clay to limit immediate movements. *Proceedings 4th International Conference on Ground Movements and Structures*, Cardiff, UK.
- Bouzid, D.A., Bhattacharya, S., and Dash, S.R. 2013. Winkler Springs (p-y curves) for pile design from stress-strain of soils: FE assessment of scaling coefficients using the Mobilized Strength Design concept. *Geomechanics and Engineering*, **5**(5): 379–399. doi:[10.12989/gae.2013.5.379](https://doi.org/10.12989/gae.2013.5.379).
- Campbell, A. 2017. Use of MSD with energy conservation to develop a design tool to predict performance of deep retaining structures. Research Project Report, Department of Mechanical Engineering, University of Bristol, Bristol, UK.
- Clough, G.W., Smith, E.M., and Sweeney, B.P. 1989. Movement control of excavation support systems by iterative design. *Proceedings of the ASCE Foundation Engineering*, **1**: 869–884.
- Clough, G.W., and Reed, M.W. 1984. Measured behavior of braced wall in very soft clay. *Journal of Geotechnical Engineering*, **110**(1): 1–19. doi:[10.1061/\(ASCE\)0733-9410\(1984\)110:1\(1\)](https://doi.org/10.1061/(ASCE)0733-9410(1984)110:1(1)).

- Deng, C., and Haigh, S.K. 2022. Sand deformation mechanisms mobilised with active retaining wall movement. *Géotechnique*, **72**(3): 260–273. doi:[10.1680/jgeot.20.P.041](https://doi.org/10.1680/jgeot.20.P.041).
- Deng, C., Haigh, S.K., Ma, X., and Xu, J. 2021. A design method for flexible walls in clay. *Géotechnique*, **71**(2): 178–187. doi:[10.1680/jgeot.19.P.095](https://doi.org/10.1680/jgeot.19.P.095).
- Diakoumi, M., and Powrie, W. 2013. Mobilisable strength design for flexible embedded retaining walls. *Géotechnique*, **63**(2): 95–106. doi:[10.1680/geot.11.P.044](https://doi.org/10.1680/geot.11.P.044).
- Gasparre, A. 2005. Advanced laboratory characterisation of London Clay. Ph.D. thesis, Imperial College, London, UK.
- Gasparre, A., Nishimura, S., Coop, M.R., and Jardine, R.J. 2007a. The influence of structure on the behaviour of London Clay. *Géotechnique*, **57**(1): 19–31. doi:[10.1680/geot.2007.57.1.19](https://doi.org/10.1680/geot.2007.57.1.19).
- Gasparre, A., Nishimura, S., Minh, N.A., Coop, M.R., and Jardine, R.J. 2007b. The stiffness of natural London Clay. *Géotechnique*, **57**(1): 33–47. doi:[10.1680/geot.2007.57.1.33](https://doi.org/10.1680/geot.2007.57.1.33).
- Ground Engineering. 1984. Deep foundations for the British Library. *Ground Engineering*, **17**(3): 20–23, 25–26.
- Hight, D.W., McMillan, F., Powell, J.J.M., Jardine, R.J., and Allenou, C.P. 2003. Some characteristics of London Clay. In *Conference Characterisation and Engineering Properties of Natural Soils: Proceedings of the International Workshop, Singapore*. Edited by T.S. Tan, et al. Swets and Zeitlinger, Lisse, The Netherlands. Vol. 2, pp. 851–907.
- Hight, D.W., Gasparre, A., Nishimura, S., Minh, N.A., Jardine, R.J., and Coop, M.R. 2007. Characteristics of the London Clay from the Terminal 5 site at Heathrow airport. *Géotechnique*, **57**(1): 3–18. doi:[10.1680/geot.2007.57.1.3](https://doi.org/10.1680/geot.2007.57.1.3).
- Kamal, R.H., Coop, M.R., Jardine, R.J., and Brosse, A. 2014. The post-yield behaviour of four Eocene-to-Jurassic UK stiff clays. *Géotechnique*, **64**(8): 620–634. doi:[10.1680/geot.13.P.043](https://doi.org/10.1680/geot.13.P.043).
- Klar, A., and Osman, A.S. 2008. Load–displacement solutions for piles and shallow foundations based on deformation fields and energy conservation. *Géotechnique*, **58**(7): 581–589. doi:[10.1680/geot.2008.58.7.581](https://doi.org/10.1680/geot.2008.58.7.581).
- Lam, S.Y., and Bolton, M.D. 2011. Energy conservation as a principle underlying mobilizable strength design for deep excavations. *Journal of Geotechnical and Geoenvironmental Engineering (ASCE)*, **137**(11): 1062–1074. doi:[10.1061/\(ASCE\)GT.1943-5606.0000510](https://doi.org/10.1061/(ASCE)GT.1943-5606.0000510).
- Li, Y., and Bolton, M. 2014. Energy conservation validates deformation mechanisms around model cantilever wall excavations in sand. *Géotechnique*, **64**(6): 419–430. doi:[10.1680/geot.13.P.197](https://doi.org/10.1680/geot.13.P.197).
- Loxham, R., Simpson, B., and Gatenby, N.E. 1990. Ground instrumentation at the British Library, Euston. *Geotechnical Instrumentation in Practice*, Thomas Telford, London, UK. pp. 257–273.
- Madabhushi, S.C., and Haigh, S.K. 2022. On the dynamic response of flexible dual-row retaining walls in dry sand. *Géotechnique*, **72**(11): 941–956. doi:[10.1680/jgeot.19.P.189](https://doi.org/10.1680/jgeot.19.P.189).
- O'Rourke, T.D. 1993. Base stability and ground movement prediction for excavations in soft clay. In *Retaining structures*. Thomas Telford Publishing, London, UK. pp. 657–686.
- Osman, A.S., and Bolton, M.D. 2004a. A new approach to the estimation of undrained settlement of shallow foundations on soft clay. *Engineering Practice and Performance of Soft Deposits*, Osaka, Japan. pp. 93–98.
- Osman, A.S., and Bolton, M.D. 2004b. A new design method for retaining walls in clay. *Canadian Geotechnical Journal*, **41**(3): 451–466. doi:[10.1139/t04-003](https://doi.org/10.1139/t04-003).
- Osman, A.S., and Bolton, M.D. 2004c. Avoiding excessive displacements: A new design approach for retaining walls. *International Conference on Structural and Foundation Failures, Singapore*. pp. 559–568.
- Osman, A.S., and Bolton, M.D. 2005. Simple plasticity-based prediction of the undrained settlement of shallow circular foundations on clay. *Géotechnique*, **55**(6): 435–447. doi:[10.1680/geot.2005.55.6.435](https://doi.org/10.1680/geot.2005.55.6.435).
- Osman, A.S., and Bolton, M.D. 2006a. Design of braced excavations to limit ground movements. *Proceedings of the Institution of Civil Engineers—Geotechnical Engineering*, **159**(3): 167–175. doi:[10.1680/geng.2006.159.3.167](https://doi.org/10.1680/geng.2006.159.3.167).
- Osman, A.S., and Bolton, M.D. 2006b. Ground movement predictions for braced excavations in undrained clay. *Journal of Geotechnical and Geoenvironmental Engineering (ASCE)*, **132**(4): 465–477. doi:[10.1061/\(ASCE\)1090-0241\(2006\)132:4\(465\)](https://doi.org/10.1061/(ASCE)1090-0241(2006)132:4(465)).
- Osman, A.S., Bolton, M.D., and Mair, R.J. 2006. Predicting 2D ground movements around tunnels in undrained clay. *Géotechnique*, **56**(9): 597–604. doi:[10.1680/geot.2006.56.9.597](https://doi.org/10.1680/geot.2006.56.9.597).
- Powrie, W. 1986. The behaviour of diaphragm walls in clays. Ph.D. thesis, University of Cambridge, Cambridge, UK.
- Raison, C.A. 1987a. Ground anchorages: Component testing at the British Library, Euston. *Proceedings of the Institution of Civil Engineers—Part 1*, **82**(June): 615–626. doi:[10.1680/iicep.1987.324](https://doi.org/10.1680/iicep.1987.324).
- Raison, C.A. 1987b. Ground anchorages: Drillhole alignment determination at the British Library, Euston. *Proceedings of the Institution of Civil Engineers—Part 1*, **82**(3): 627–634. doi:[10.1680/iicep.1987.325](https://doi.org/10.1680/iicep.1987.325).
- Raison, C.A. 1988. Discussion on Paper 9138 by Burland, J. B. and Kalra, J. C. *Proceedings of the Institution of Civil Engineers—Part 1*, **84**(Feb): 114–117.
- Ryalls, P.J., and Stevens, A. 1990. A large excavation at the New British Library in Central London. *Structural Survey*, **8**(1): 9–27. doi:[10.1108/EUM0000000003209](https://doi.org/10.1108/EUM0000000003209).
- Simpson, B., Calabresi, G., Sommer, H., and Wallays, M. 1981. Design parameters for stiff clays. In *Proceedings of the 7th European Conference on Soil Mechanics and Foundation Engineering, Brighton, Design Parameters in Geotechnical Engineering*. British Geotechnical Society, London, UK. Vol. 5, pp. 91–125.
- Simpson, B., and Vardanega, P.J. 2014. Results of monitoring at the British Library excavation. *Proceedings of the Institution of Civil Engineers—Geotechnical Engineering*, **167**(2): 99–116. doi:[10.1680/geng.13.00037](https://doi.org/10.1680/geng.13.00037).
- Skempton, A.W. 1951. The bearing capacity of clays. *Building Research Congress*, 1: 180–189. Republished in: *Selected Papers on Soil Mechanics*, Thomas Telford, London, UK. 50–59. doi:[10.1680/sposm.02050.0008](https://doi.org/10.1680/sposm.02050.0008).
- St John Wilson, C. 1998. The design and construction of the British Library. The British Library, London, UK.
- Stevens, A., and Ryalls, P.J. 1990. Design and construction of the structured works, phase 1A, British Library, St Pancras. *The Structural Engineer*, **68**(9): 159–166.
- Vardanega, P.J., and Bolton, M.D. 2011a. Predicting shear strength mobilisation of London clay. In *Proceedings 15th European Conference on Soil Mechanics and Geotechnical Engineering: Geotechnics of Hard Soils—Weak Rocks*, Edited by A. Anagnostopoulos, M. Pachakis and C. Tsatsanifos IOS Press, Amsterdam, The Netherlands, 1: pp. 487–492. doi:[10.3233/978-1-60750-801-4-487](https://doi.org/10.3233/978-1-60750-801-4-487).
- Vardanega, P.J., and Bolton, M.D. 2011b. Strength mobilization in clays and silts. *Canadian Geotechnical Journal*, **48**(10): 1485–1503. doi:[10.1139/T11-052](https://doi.org/10.1139/T11-052) [corrigendum, 49(5): 631, doi:[10.1139/t2012-023](https://doi.org/10.1139/t2012-023)].
- Vardanega, P.J., Kolody, E., Pennington, S.H., Morrison, P.R.J., and Simpson, B. 2012a. Bored pile design in stiff clay I: Codes of practice. *Proceedings of the Institution of Civil Engineers—Geotechnical Engineering*, **165**(4): 213–232. doi:[10.1680/geng.11.00062](https://doi.org/10.1680/geng.11.00062).
- Vardanega, P.J., Williamson, M., and Bolton, M.D. 2012b. Bored pile design in stiff clay II: Mechanisms and uncertainty. *Proceedings of the Institution of Civil Engineers—Geotechnical Engineering*, **165**(4): 233–246. doi:[10.1680/geng.11.00063](https://doi.org/10.1680/geng.11.00063) [corrigendum, 166(5): 518, doi:[10.1680/geng.2013.166.5.518](https://doi.org/10.1680/geng.2013.166.5.518)].
- Wang, L.Z., Liu, Y.J., Hong, Y., and Liu, S.M. 2018. Predicting deformation of multipropped excavations in soft clay with a modified mobilizable strength design (MMSD) method. *Computers and Geotechnics*, **104**: 54–68. doi:[10.1016/j.compgeo.2018.07.018](https://doi.org/10.1016/j.compgeo.2018.07.018).
- Xu, Z.H. 2007. Deformation behaviour of deep excavations supported by permanent structure in Shanghai soft deposit. Ph.D. thesis, Shanghai Jiao Tong University, Shanghai, China (in Chinese).