

Encouraging Breath: Increasing Out-of-Session DMHI Engagement using a Shape-Changing Biofeedback Physicalization within a Longitudinal RCT

Alexz Farrall
ADA University
Baku, Azerbaijan
af874@bath.ac.uk

Adwait Sharma
University of Bath
Bath, UK
as5339@bath.ac.uk

Pamela Jacobsen
University of Bath
Bath, UK
pcj25@bath.ac.uk

Ben Ainsworth
University of Southampton
Southampton, UK
ben.ainsworth@soton.ac.uk

Jason Alexander
University of Bath
Bath, UK
jma73@bath.ac.uk



Figure 1: Experimental setup comprising the Digital Mental Health Intervention (DMHI), the shape-changing biofeedback physicalization called 'Ankor', and the Biopac Respiration Transducer

Abstract

Out-of-session or “homework” engagement is a primary limiting factor in clinical mental health outcomes. Despite weekly practitioner contact, adherence to prescribed Digital Mental Health Interventions (DMHIs) typically drops by 96.1% within two weeks. We evaluate Ankor, a handheld shape-changing biofeedback physicalization, as an adjunct to standard audio-guided mindfulness. In a longitudinal randomized controlled study (N=69), participants were assigned to Ankor+audio or audio-only control across six weekly 15-minute laboratory sessions, with optional DMHI use between sessions. Relative to control, Ankor yielded a 351% increase in total DMHI practice initiations and, by week 2, maintained 29.4% active users versus 2.9% in control, indicating substantially higher out-of-session engagement and reduced early disengagement. These findings demonstrate the capacity of shape-changing biofeedback

physicalizations to extend adherence to DMHIs, highlighting kinaesthetic interactions as a promising design pathway for sustaining engagement in mental health interventions.

CCS Concepts

• **Human-centered computing** → **Empirical studies in HCI**; **Haptic devices**; • **Hardware** → *Emerging interfaces*; • **Applied computing** → *Consumer health*.

Keywords

Physicalization, Biofeedback, Shape-Change, Mental Health, Longitudinal Study, Randomized Control Trial, Breath, Engagement

ACM Reference Format:

Alexz Farrall, Adwait Sharma, Pamela Jacobsen, Ben Ainsworth, and Jason Alexander. 2026. Encouraging Breath: Increasing Out-of-Session DMHI Engagement using a Shape-Changing Biofeedback Physicalization within a Longitudinal RCT. In *Proceedings of the 2026 CHI Conference on Human Factors in Computing Systems (CHI '26)*, April 13–17, 2026, Barcelona, Spain. ACM, New York, NY, USA, 17 pages. <https://doi.org/10.1145/3772318.3790933>



This work is licensed under a Creative Commons Attribution 4.0 International License. *CHI '26, Barcelona, Spain*

© 2026 Copyright held by the owner/author(s).
ACM ISBN 979-8-4007-2278-3/2026/04
<https://doi.org/10.1145/3772318.3790933>

1 Introduction

In the evolving field of therapy, Digital Mental Health Interventions (DMHIs) are increasingly used outside of face-to-face sessions or within blended frameworks, offering automated self-help activities that reinforce learned skills [16]. These activities, often referred to as therapeutic “homework”, are known to improve treatment outcomes, with 68% of patients who complete them showing greater improvement compared with 32% who do not [40]. However, despite their established benefits, adherence remains consistently low. A national survey found that 93% of mental health professionals report only low to moderate task compliance [33, 39], and usage data shows that users typically complete only 40% of DMHI content [31], with active engagement dropping to just 3.9% after two weeks [11, 14].

Cultivating therapeutic outcomes can, therefore, be challenging if individuals do not consistently adhere to practice. Neurocognitive mechanisms of adherence are anchored in intention, motivation, and self-regulation, which are essential for initiating, maintaining, and enhancing interventions such as mindfulness, ensuring continuity [84]. The formation of a consistent practice habit is particularly critical especially as users face challenges in building mindfulness into daily routines [24]. Behavioural challenges such as struggling to find time, negative responses to one’s own practice, and a lack of external motivation significantly impact engagement, leading users to abandon DMHIs prematurely [24]. Self-discipline and effort are often required to overcome these challenges, which underscores the importance of designing interventions that support habit formation and reduce barriers to engagement. Interactive technologies, particularly those utilizing biofeedback, can help by facilitating immersive experiences and aiding individuals in overcoming these behavioural barriers through sensory stimuli that promote deeper engagement and adherence [9, 23, 53, 67].

However, the efficacy of biofeedback significantly hinges on the design and presentation of the bio-data [43, 76, 91]. For example, displaying pulmonary data via digital readouts, line graphs, or charts, often fails to engage users meaningfully, as these formats may be perceived as mundane and unintuitive [91]. Further, despite an improved effect of aesthetic or ambiguous designs [95, 100], users still need to retain eye contact with the interface, which may not facilitate deeper therapeutic experiences or embodied awareness [20, 56, 89], detracting from the intervention’s ability to foster learnt skills [45]. In contrast, multimodal biofeedback systems, which integrate haptic feedback, show a higher potential for enhancing user engagement and stress management [19, 43, 99]. They facilitate more intuitive user interactions by translating physiological signals into more comprehensive multisensory experiences, by leveraging the emotional and psychological significance of touch [38, 65].

Artefacts that are designed to physicalize breathing often leverage their inherent physical properties to support users to focus on their internal physiology; a foundational approach to promote and support well-being in therapy [1, 30, 69]. They translate breathing data into tangible experiences [38] through static or dynamic feedback [75]. Static feedback often involves fixed sinusoidal waveforms that rhythmically illustrate breathing patterns [4, 5, 41], and dynamic feedback provides real-time, continuous biofeedback, adjusting to the user’s physiological states [43, 60, 99]. Yet, among the

methods utilised for representing breath—optical [29, 82, 100], vibrational [41, 52, 104], and shape-changing [18, 35, 46, 51, 90, 98]—it is the shape-changing interfaces that offer the most expansive possibilities [2, 38] due to their ability to dynamically alter their form. However, while immediate engagement benefits have been observed within shape-changing biofeedback physicalizations [35, 61, 96, 98], how these interactions influence psychological and physical engagement over time and outside of therapeutic sessions is still lacking empirical evidence [8].

Existing work explores shape-changing physicalizations in therapeutic and well-being contexts through short-term, prototype-driven studies. In clinical settings, systems such as a clippable pneumatic device for regulating anxiety-related breathing and an actuated environment for supporting yoga-based breathwork were deployed as adjuncts to formal interventions [18, 61]. For everyday personal well-being, handheld and wearable artefacts act as tools for stress reduction, including a portable ‘breathing friend’ that synchronizes with users’ respiration and a tactile breath pacer shown to support relaxation during bedtime routines [52, 96]. In mindfulness and contemplative practice, shape-changing interfaces can act as embodied attentional anchors; a haptic cushion and granular respiratory feedback system have demonstrated improvements in respiratory awareness and meditative focus by externalizing internal bodily rhythms [35, 51]. Playful and affective regulation approaches with expressive wearables and modular haptic accessories can also mitigate anxiety and provide momentary emotional relief during episodes of heightened stress [53, 98, 105]. Collectively, these systems reveal the breadth of applications of shape-changing physicalizations, yet their evaluations predominantly focus on short-term or in-the-moment effects, leaving open the question of whether they can foster sustained psychological and physical engagement in digital interventions over extended periods.

To address this gap, we present a six-week Randomized Controlled Trial (RCT) that integrates a shape-changing biofeedback physicalization into a validated DMHI mindfulness programme and examines its impact on both psychological and physical engagement with out-of-session activities. Specifically, we compare two conditions: an evidence-based DMHI mindfulness program [73] and the same program augmented with Ankor, a physical device that expands and contracts in real time to mirror the user’s breathing [26]. This comparison provides empirical evidence on engagement differences between an active control and experimental condition, investigating whether in-session physicalization promotes continued practice outside the intervention. This work contributes empirical evidence as to the feasibility of improving out-of-session engagement via weekly exposure to a shape-changing biofeedback physicalization.

2 Background

Ankor is a shape-changing biofeedback physicalization that responds in real time to a respiration signal from a chest-strap transducer. When the user inhales, the artefact expands, with the surface area, volume, and internal pressure increasing; becoming larger and firmer in the hands. When the user exhales, it contracts and softens, bringing the hands closer together and making the surface easier to indent. This kinaesthetic feedback lets users feel their breath data

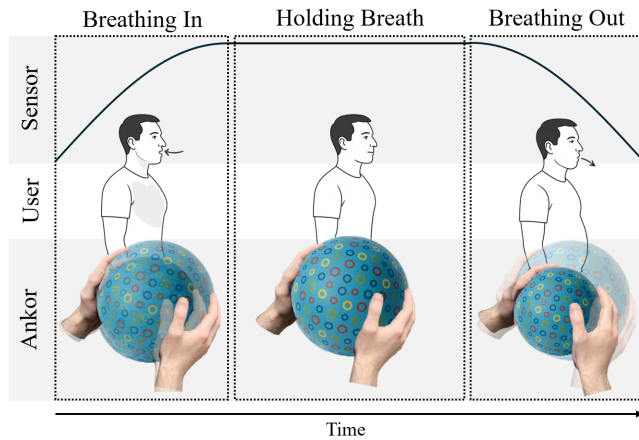


Figure 2: Illustration of the different shape-changing states of Ankor, in relation to user interaction and chest sensor output.

embodied in a tangible object, as the sensor captures respiration and Ankor processes and responds to it (see Figure 2).

This process is useful due to the importance of breathing, which extends beyond the mere intake of oxygen for physiological sustenance. It plays a crucial role in enhancing well-being in therapy [1, 30, 69], acting as a mechanism for managing stress and emotional states [72, 85, 101]. In contrast to less directly controllable physiological responses such as heart rate or brain waves, breathing serves as an input signal that users can deliberately regulate. This controllability allows them to perceive immediate psychological and physiological changes arising directly from their actions, whereas other biosignals primarily reflect downstream outcomes of prior processes.

However, despite its apparent simplicity and its foundational role in many therapeutic techniques, sustaining controlled and mindful breathing over extended periods (5–15 minutes) remains a challenge for many individuals [8, 24, 64]. Maintaining continuous attention to the breath requires considerable discipline and the capacity to remain attuned to internal bodily sensations [24, 49]. While even infrequent practice has been shown to confer measurable benefits, the consistency and quality of engagement strongly influence outcomes [24, 40].

In skill acquisition, not all forms of practice are equally effective; deliberate and purposeful practice, characterised by clearly defined goals, feedback, and sustained effort, is markedly more beneficial than simply engaging in structured or naïve practice, which may lack individualisation or depth [3]. In the context of mindfulness, this distinction underscores that quality and intentionality of engagement, rather than the mere repetition of breathing exercises, are what drive meaningful improvements in capacity and well-being [14].

Therefore, integrating kinaesthetic feedback has the potential to enhance attentional focus on the breath, thereby increasing both the psychological salience and emotional significance of the practice [26]. In this manner, Ankor was specifically designed to biomimetically mirror the alveolar structure of the lungs, enabling high-fidelity, bimanual kinaesthetic interaction that is directly coupled to the natural rhythm of respiration; further incorporating

design principles associated with positive affect, such as circular geometries [27] and abstract representations of mental health concepts, to support a more engaging and affectively meaningful user experience.

The empirical evaluation of a Physical Artefact for Well-being System (PAWS) demonstrated its efficacy in augmenting a mindful breathing activity [26]. In a single session RCT (N = 58) comparing audio-guided breathing with and without a shape-changing biofeedback physicalization, participants in the experimental condition reported significantly greater reductions in both physiological and subjective indices of anxiety. Specifically, those using the device reported an average 75% reduction in self-reported anxiety and were 56% more resilient to worry-induced thoughts.

Even so, the previous evaluation primarily addressed ‘in-the-moment’ psychological engagement, without examining potential carry-over effects beyond the immediate intervention. Questions therefore remained around whether the observed benefits might have been attributable to transient factors such as novelty, whether improvements would persist once the device was withdrawn, and to what extent advantages would be maintained with periodic use. The study in this paper was designed to address these knowledge gaps through a six week study and improved system design.

2.1 System Overview

In previous work, the PAWS permitted only a static mode of expansion and contraction, limiting its ability to reflect the dynamic qualities of respiration [26]. For example, if a user inhaled for four seconds, a solenoid valve would remain open for that exact duration, inflating the spherical artefact through pneumatic circuitry. While functionally synchronised, this implementation did not capture critical respiratory nuances such as tidal volume which represents the variation in the amount of air exchanged with each breath. As a result, participants reported that the interaction failed to convey the full richness of their pulmonary function, thereby constraining the depth of experiential engagement.

To overcome these constraints, Ankor was developed to enhance the original PAWS functionality [26] by incorporating an adaptive feedback response mechanism that simulates the dynamic respiratory variations within each breath. To achieve this, Ankor utilises a proportional pressure regulator paired with a vacuum generator to precisely control the airflow into and out of the artefact. The inflation and deflation processes can be calculated and adjusted in real-time, more accurately replicating the user’s physiological breathing patterns and characteristics (see Figure 3).

3 Methodology

3.1 Study Design

To explore the long term engagement affects of interaction with a shape-changing biofeedback physicalization, this study employs a six week single-blind RCT, integrating two intervention components: Ankor and a mindfulness DMHI¹. Participants underwent unique and overlapping longitudinal assessments for three distinct study time points: Week one ‘baseline’ (T1), week two-to-five ‘mid-intervention’ (T2-T5), and ‘end-of-intervention’ at week six

¹Approved by the University of Bath; anonymized for review] Research Ethics Committee Ref. Num. 23 064

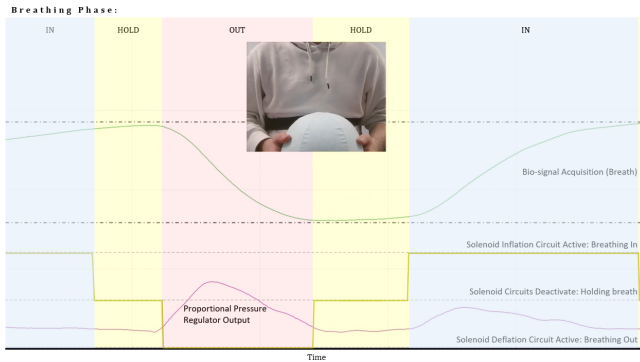


Figure 3: Depiction of the real-time bio-signal data acquisition in conjunction with the solenoid activation sequence and proportional pressure regulator output. The yellow line indicates the solenoid circuit activation sequence. The green line displays the real-time bio-signal input from the chest respiration transducer, while the purple line shows the output from the proportional pressure regulator.

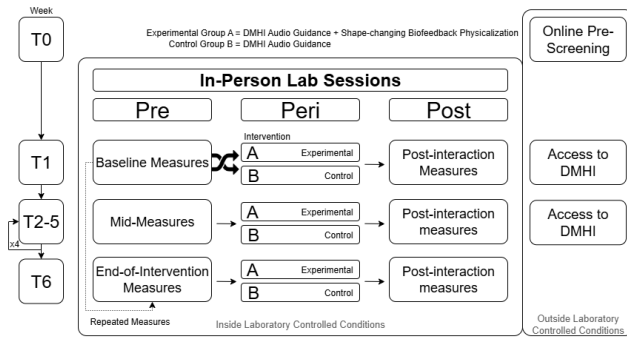


Figure 4: Illustrated study design, depicting a high-level procedure overview across the six weeks.

(T6)². Following baseline measurements at T1, participants were randomly assigned to an experimental group or a control group (see Figure 4). The experimental group used Ankor in addition to listening to guidance from evidence-based audio via the DMHI over six independent in-person lab sessions. The control group only listened to the guidance from evidence-based audio via the DMHI across six independent in-person lab sessions. Outside of these sessions, all participants had access to the same DMHI via their smartphone.

3.2 Eligibility

Adults aged 18 years and above and who owned a compatible smartphone (iOS 15.0+ or Android 8.0+ capable of running the Medito app) were eligible, provided they scored below 44 on the Warwick-Edinburgh Mental Well-being Scale (WEMWBS). This cut-off captures the population most at risk of mental health issues [54, 97]. Scores of 41–44 correspond to “possible” (mild) depression, while

²No follow-up beyond T6 was conducted, as extending data collection beyond the structured intervention period would have coincided with a period of atypical routines (winter break), increasing the likelihood of confounding influences.

| Session | Audio Track Title |
|---------|-----------------------------|
| 1 | Introduction to Mindfulness |
| 2 | Non-Judgement |
| 3 | Science of Meditation |
| 4 | The Present Moment |
| 5 | Manage Negative Emotions |
| 6 | Body Scan |

Table 1: Medito tracks utilized within weekly lab-based sessions

scores below 41 correspond to “probable” depression; selecting a threshold of 44 thus includes individuals experiencing clinically meaningful distress who remain suitable for a self-directed digital intervention without therapist oversight [54]. Restricting entry to this range also minimises ceiling effects on positive-valence measures and increases the sensitivity to detect upward change during the six-week trial. Exclusion criteria included being under 18, current pregnancy, ongoing psychotherapy or psychopharmacological treatment, or any formally diagnosed mental-health condition; applicants scoring below 36 were referred to local clinical services and not enrolled. Recruitment was conducted using an online eligibility pre-screening survey, which was circulated through email channels and poster advertisements.

4 Setting

In both experimental A, and control group B conditions, participants were required to attend one-hour in-person weekly sessions in a comfortable research lab. The DMHI, Medito [58], was accessible to all participants outside sessions and accessed through a unique login. For those using Ankor during sessions, they held the pneumatically actuated shape-changing biofeedback physicalization between their hands, which changed in size with relation to their breathing. For the audio-only control group, they were instructed to sit comfortably with no instruction as to hand placement. Both groups wore headphones which delivered pre-planned mindfulness audio tracks from the evidence-based programme. To ensure continuity, both groups wore a respiration chest strap during sessions, where only the experimental condition utilized the captured data to replicate biosignals. Participants were either awarded £20 or course credits for study completion; however, all were notified that DMHI engagement between in-person sessions had no impact on incentives.

4.1 Intervention

The DMHI was developed by Medito, and validated in a separate RCT [73]. In-lab sessions were part of a ‘mindfulness pack’, which through audio guidance, introduces an individual to the basic concepts, history and benefits of mindfulness; see Table 1. These sessions lasted 15 minutes every week, for both the experimental and control conditions. Outside of the sessions, participants had access to Medito and were encouraged to practice once a day using their extensive user interface catalogue of interventions. Figure 8 shows screenshots of the DMHI. At the time of use, persuasive content included push notifications, streaks, praise for track completion, social facilitation, and an attractive interface.

4.2 Outcome Measures

Outcome measures aimed to capture both the degree of sustained user engagement and the potential therapeutic gains associated with once-a-week shape-changing biofeedback physicalization interaction. This began with primary measures that gauge psychological and physical engagement, reflecting how motivated and active participants remained throughout the study. Next, the secondary outcomes examined mental well-being, mindfulness, and interoceptive awareness, to see whether heightened engagement with Ankor and the DMHI also fostered meaningful improvements in participants. By using a combination of self-report scales, physiological data, and app-usage metrics, the goal was to ascertain how effectively the interoperation of a new modality supports participants' intentions to practice and if this translated into greater therapeutic benefits over a six-week period.

4.2.1 Primary outcome measure. The primary outcome measure of the study was engagement, both psychological, classified as consisting of motivation, intention, commitment, and belief, and physical, classified as attendance and retention to an intervention [8]. Table 2 details the instances in which measures were taken.

Psychological engagement measures consisted of the Situational Motivation Scale (SIMS) [32], to assess the constructs of intrinsic motivation, identified regulation, external regulation, and motivation across the study duration, and aspects of the Flow State Scale (FSS) [37], which included the dimensions of unambiguous feedback, concentration on task at hand, loss of self-consciousness, transformation of time, and autotelic experience for post-interaction insights. During the intervention stages of T1 and T6, Heart Rate Variability (HRV) was captured through electrocardiogram (ECG) electrode placement to assess sympathoexcitatory subcortical circuit inhibition, enabling comparisons between self-regulatory efforts [15, 100, 101].

Physical engagement was assessed using DMHI metrics, tracking Medito app usage in four categories: 'access' logged when the app is opened, 'started' logged when an audio track is initiated, 'completed' logged when an audio track is finished, and 'query' logged when searching for a specific track to achieve a desired outcome. Self-assessment practice frequencies were given at the start of each session following T1 to compare self-report and metric findings.

4.2.2 Secondary outcome measures. Secondary outcomes include multiple mental well-being outcomes, mindfulness skills, and interoceptive awareness. Well-being was assessed using the WEMWBS [54, 93], and Depression Anxiety Stress Scales (DASS) [62] to examine changes in negative emotional states of depression, anxiety and stress. HRV was used to examine well-being changes due to known correlations of psychological flexibility, social approach behaviours, and reduced risk of mental illness [12, 42]. Mindfulness was measured using the Embodied Mindfulness Questionnaire (EMQ) [45], which aims to fully integrate the body and mind-body connection in conceptualizing and operationalizing mindfulness, thereby providing a means to interpret learnt skills. The Multidimensional Assessment of Interoceptive Awareness (MAIA-2) [21] was utilized to examine changes in the

$$\text{End-of-intervention} = \beta_0 + \beta_1 \text{Group} + \beta_2 \text{Baseline} + \epsilon \quad (1)$$

Equation 1. Representation of the GLM employed to analyze the influence of treatment on end-of-intervention outcomes, enabling the isolation of the treatment effect from variations due to baseline scores. The equation models end-of-intervention scores as a function of group assignment and baseline scores. Here, β_0 is the intercept, β_1 measures the effect of the treatment group A versus control group B, β_2 captures the influence of baseline scores on outcomes, and ϵ represents the model's error term.

sensation, interpretation, and integration of internal somatic signals for which correlations are known between poor interoceptive awareness and difficulties with emotion awareness and emotion regulation [71].

4.3 Procedure

Screening participants involved the completion of an online eligibility questionnaire at T0. Post-screening, participants signed up and attended their individual Session 1 (T1). Baseline measures of WEMWBS, DASS, EMQ, and MAIA-2 were completed before undergoing a randomized allocation into either the experimental Ankor or audio-only control group. Participants were equipped with electrodes and a respiration strap to capture electrocardiographic and pneumographic responses during a 5-minute rest period and the 15-minute intervention. Post-interaction measures included the SIMS, and FSS. The DMHI, Medito, was introduced to all participants to practise out-of-session skills, provide support, and manage emotions. Participants were informed that the in-lab sessions utilized components of the DMHI and that they could access additional mindfulness activities outside of in-person sessions through the app. Beyond optional in-app push notifications, no other reminders were given.

Weeks 2–5 followed the same pattern: WEMWBS was completed pre-intervention and FSS and self-report practice effort post-intervention. T6 replicated the initial measures to assess changes over the intervention, including WEMWBS, DASS, EMQ, MAIA-2 pre-intervention, and SIMS and FSS post-intervention. Physiological data was again captured.

4.4 Data Analysis

As outlined below, analyses were theory-driven and aligned to pre-specified psychological constructs. For each validated self-report scale (MAIA-2, EMQ, SIMS, FSS, DASS), separate General Linear Models (GLMs) were applied with baseline covariates. Subscales were interpreted as theoretically grounded dimensions within each construct rather than as independent hypotheses.

4.4.1 Self-Report. To evaluate group differences across experimental group A and control group B for self-report scales of SIMS, FSS, DASS, WEMWBS, EMQ, and MAIA-2, a GLM with baseline scores as a covariate was employed using equation 1. Standardized (Cohen's *d*) effect sizes were calculated using the standardized effect estimates divided by the baseline pooled standard deviations; illustrated via Figure 5.

To evaluate the differences in self-report practice frequencies between group A and group B, response data across multiple sessions was aggregated, and then the Chi-Square Test of Independence was employed.

| | T1 | | | T2 – T5 | | | T6 | | |
|--------------------------------------|-----|------|------|---------|------|------|-----|------|------|
| | Pre | Peri | Post | Pre | Peri | Post | Pre | Peri | Post |
| SELF-REPORT MEASURES | | | | | | | | | |
| Depression [DASS-D] | Pre | | | | | | Pre | | |
| Anxiety [DASS-A] | Pre | | | | | | Pre | | |
| Stress [DASS-S] | Pre | | | | | | Pre | | |
| Well-being [WEBWBS] | Pre | | | Pre | | | Pre | | |
| Mindfulness [EMQ] | Pre | | | | | | Pre | | |
| Interoception [MAIA-2] | Pre | | | | | | Pre | | |
| Motivation [SIMS] | | | Post | | | | | | Post |
| Flow [FSS] | | | Post | | | Post | | | Post |
| App Practice Frequency | | | | | | Post | | | Post |
| PHYSIOLOGICAL MEASURES | | | | | | | | | |
| Electrocardiogram (ECG) | Pre | Peri | | | | | Pre | Peri | |
| Pneumographic | Pre | Peri | | Peri | | | Pre | Peri | |
| DIGITAL ENGAGEMENT METRICS | | | | | | | | | |
| App Access | | | | | | | | | Post |
| Audio Tracks Started | | | | | | | | | Post |
| Audio Tracks Completed | | | | | | | | | Post |
| Searched Queries | | | | | | | | | Post |
| INTERVENTIONS | | | | | | | | | |
| Control group A (Audio Only) | | Peri | | | Peri | | | Peri | |
| Experimental group B (Ankor + Audio) | | Peri | | | Peri | | | Peri | |

Table 2: Time points in weeks of measures and metrics recorded across and within sessions. The abbreviations of pre, peri, and post, represent pre-intervention, peri-intervention, and post-intervention time points, respectively

$$\Delta\text{RMSSD}_{ij} = \beta_0 + \beta_A g_i + \beta_j + e_{ij} \quad (2)$$

Equation 2. Modelling the Delta RMSSD values as a linear sum of an intercept, the group, and time. Where i is an index for the participant, j is an index for the time step, g_i is 1 if the i -th participant belongs to group A, 0 otherwise, e_{ij} is the residual error term for the i -th participant at the j -th time step, and β_0 , β_A , and β_j are the coefficients of the intercept, the effect on ΔRMSSD if the participant belonged to group A, and the effect on ΔRMSSD at the j -th time step respectively.

4.4.2 Physiological Measures. The objective of the psychological engagement analysis was to assess the impact of group affiliation on the delta root mean square of successive differences (ΔRMSSD) in HRV, independent of time point measurements. To evaluate if being in group A positively affects ΔRMSSD values, reflecting better autonomic control compared to other groups, a linear regression model was employed; expressed as equation 2. The analysis was conducted separately for T1 and T6, ensuring that the effects of the group could be isolated per session without the confounding influence of time. To evaluate ΔRMSSD baseline changes, an independent t-test was carried out on T1 and T6, 5-minute pre-intervention readings.

4.4.3 Digital Engagement Metrics. To investigate differences in total user engagement between group A and group B, DMHI data was aggregated for each group with a Z-test being applied to assess statistical differences. This total engagement was determined

by summing the counts of event interactions such as app access, starting audio tracks, completing audio tracks, and query searches across the six weeks for each unique user. To measure the differences in the number of unique active users engaged across the six weeks, a Mann-Whitney U-test was employed and corrected using the Bonferroni method.

5 Results

Out of the 71 eligible individuals who completed T1 baseline measures, one from each group dropped out for personal reasons during the six weeks. Therefore 69 participants who scored under 44 on the WEMWBS at T0 completed the study: See Table 3 for demographic and WEMWBS split after randomization.

The results generated from participants are segmented between *Physical Engagement*, which details the actual vs perceived out-of-session DMHI metrics, *Psychological Engagement*, which outlines the findings from self-report measures (SIMS & FSS) and RMSSD values, and *Well-being, Mindfulness, and Interoceptive Awareness* outcomes which highlight potential benefits beyond direct engagement. Figure 5 is a forest plot of the standardized group differences of self report measures with the full statistical analysis viewable in the Figure 9 (see Appendix). Figures 6a and 6b illustrate DMHI metrics, with Figure 10 (see Appendix) displaying actual vs perceived DMHI user engagement across the six weeks for one event category.

Table 3: Participant demographics and WEMWBS scores at T1

| Demographics | Group A (n=34) | Group B (n=35) |
|-------------------------|---------------------|---------------------|
| Gender | | |
| Female | 30 (88.2%) | 30 (85.7%) |
| Male | 4 (11.8%) | 5 (14.3%) |
| Age | | |
| 18–24 | 32 (94.1%) | 33 (94.3%) |
| 25–34 | 1 (2.9%) | 0 (0%) |
| 35–44 | 1 (2.9%) | 0 (0%) |
| 45–54 | 0 (0%) | 2 (5.7%) |
| Ethnicity | | |
| White | 22 (64.7%) | 20 (57.1%) |
| Asian | 4 (11.8%) | 5 (14.3%) |
| Black | 3 (8.8%) | 2 (5.7%) |
| Mixed | 3 (8.8%) | 5 (14.3%) |
| Other | 2 (5.9%) | 3 (8.6%) |
| WEMWBS Mean (SD) | 38.35 (4.50) | 37.69 (7.02) |

Finally, Figure 7 is the generated RMSSD physiological comparisons at T1 and T6, which were captured during the in-person session experiences.

5.1 Physical Engagement

Across all metrics, total DMHI engagement for ‘accessed’ ($z = 10.76$, $p < 0.001^{***}$), ‘started’ ($z = 20.72$, $p < 0.001^{***}$), ‘completed’ ($z = 9.42$, $p < 0.001^{***}$), and ‘queried’ ($z = 6.16$, $p < 0.001^{***}$) was significantly higher in those who experienced Ankor once a week in comparison to group B; see Figure 6a. Similarly, across the six weeks, significantly more group A participants engaged with the DMHI than control group B across all metrics of ‘accessed’ ($t = 30$, $p = 0.016^*$), ‘started’ ($t = 32.5$, $p = 0.006^{**}$), ‘completed’ ($t = 26$, $p = 0.013^*$), and ‘queried’ ($t = 24$, $p = 0.001^{**}$), see Figure 6b.

Notably, perceived engagement levels diverged substantially from actual DMHI use. Self-reported practice frequencies showed little variation across weeks, with no significant differences detected ($X^2(4, N = 69) = 0.07$, $p = 0.999$), suggesting participants believed their engagement to be consistent over time. However, objective usage data revealed marked fluctuations and an overall decline. Figure 10 (see Appendix) illustrates this discrepancy, underscoring a systematic overestimation of engagement when based on self-report measures alone.

5.2 Psychological Engagement

Except for amotivation ($F(1,66) = 4.044$, $p = 0.048^*$), no statistically significant group differences were detected for SIMS.

With the exception of amotivation ($F(1,66) = 4.044$, $p = 0.048^*$), no between-group differences were detected at the construct level for SIMS. However, all dimensions followed a similar directional trend, indicating a broader shift in motivation to self-manage across both conditions; with greater group favourable effects observed in group A. For the FSS, all dimensions similarly showed greater group

favourable effects with no statistically significant group differences being detected. The dimensions of autotelic experience, concentration on task at hand, loss of self-consciousness, transformation of time showed statistical individual baseline improvements, detailing a self-perceived shift in flow as practice progressed.

However physiological measures captured during intervention experience, visible via Figure 7, revealed contradictory findings. At baseline T1 ($\beta_A = 7.463$, $CI = [2.624, 12.305]$, $t = 3.034$, $p = 0.003^{**}$) and T6 ($\beta_A = 7.463$, $CI = [4.120, 12.529]$, $t = 3.895$, $p < 0.001^{***}$) group A saw a significant increase, independent of time points.

While self-reported measures of flow showed no significant differences between groups, physiological data revealed elevated self-regulation efforts in group A, as evidenced by higher HRV (RMSSD) values. This suggests that Ankor enhanced psychological engagement through autonomic pathways not consciously perceived by participants. Notably, changes across the sessions were not compared due to different mindfulness activities employed within those sessions; see Table 1.

5.3 Well-being

At T6, the experimental Ankor group A ($M = 48.8$, $SD = 7.3$) reported significantly higher mental well-being than the audio-only control group B ($M = 45.0$, $SD = 8.6$), via the WEMWBS ($F(1,66) = 4.086$, $p = 0.047^*$). For DASS, between-group differences were not significant. However, both groups showed significant DASS improvement relative to their own baselines, indicating meaningful within-group gains. For physiological baseline measures of group A at T1 ($M = 53.4$, $SD = 35.2$) and T6 ($M = 56.4$, $SD = 36.8$), and group B at T1 ($M = 56.9$, $SD = 31.6$) and T6 ($M = 64.2$, $SD = 38.5$), no significant differences were found in HRV scores across groups ($t = -0.668$, $df = 63$, $p = 0.506$).

5.4 Mindfulness

Interaction with Ankor was associated with favourable shifts across multiple dimensions of embodied mindfulness, suggesting sensitivity to the intervention at the construct level rather than through isolated subscale effects. Three dimensions appeared particularly responsive and may reflect underlying mechanisms of engagement. First, *disconnection from the body* ($F(1,66) = 7.047$, $p = 0.0099^{**}$) reflects the ability to sustain awareness of one’s body over time; here, group A showed more favourable post-intervention scores, indicating greater continuity of bodily attention. Second, *awareness of the mind–body connection* ($F(1,66) = 22.380$, $p < 0.001^{***}$) captures the capacity to notice bidirectional associations between mental and bodily states; this dimension showed the strongest relative sensitivity to Ankor, potentially reflecting cognitive–somatic integration processes. Finally, *acceptance of feelings and bodily sensations* ($F(1,66) = 7.207$, $p = 0.009^{**}$) relates to the ability to remain present with physical and emotional sensations without disengagement or avoidance. These patterns, taken together, indicate that Ankor may primarily support mechanisms related to embodied awareness and affective regulation.

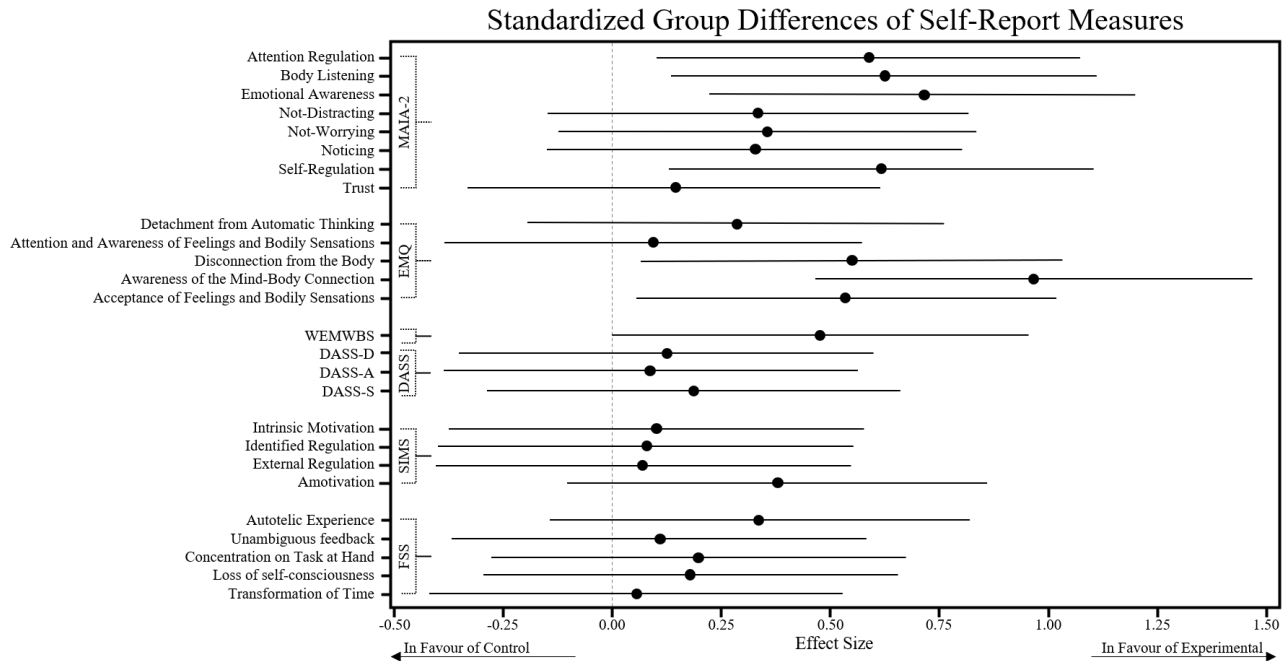


Figure 5: Standardized group differences for MAIA-2, EMQ, WEMWBS, DASS, SIMS, FSS. Each point represents the effect size (Cohen's d) for the difference between the experimental group A and control group B at six weeks (T6), with error bars depicting 95% confidence intervals (CIs). Effect sizes greater than zero suggest a favourable outcome for group A, whereas those less than zero would indicate a favourable outcome for group B.

5.5 Interoceptive Awareness

Similarly, interaction with Ankor facilitated greater interoceptive awareness for four out of eight MAIA-2 dimensions compared to the audio-only condition, where all except *noticing* individual baseline differences were significant. Ankor was shown to significantly increase dimensions of *attention regulation* ($F(1,66) = 7.580, p = 0.008^{**}$) the ability to sustain and control attention to body sensation, *body listening* ($F(1,66) = 8.417, p = 0.005^{**}$) the ability to actively listen to the body for insight, *emotional awareness* ($F(1,66) = 10.440, p = 0.002^{**}$) the awareness of the connection between body sensations and emotional states, *not-distracting* ($F(1,66) = 7.580, p = 0.008^{**}$) the inference of an adaptive tuned-in relationship to unpleasant sensations, and *self-regulation* ($F(1,66) = 7.930, p = 0.006^{**}$) the ability to regulate psychological distress by attention to body sensations.

6 Discussion

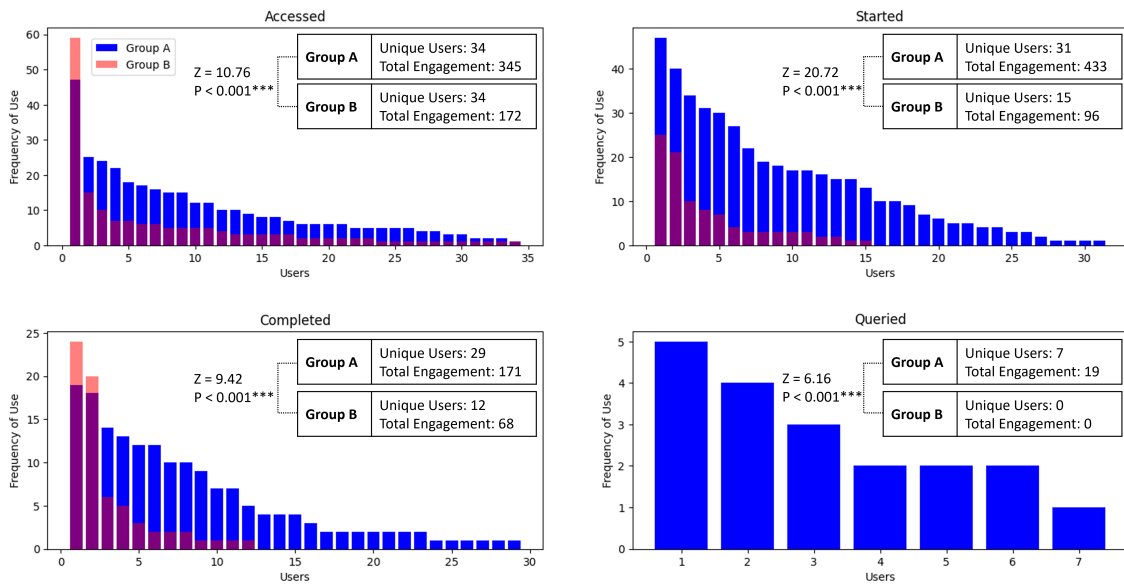
This work provides empirical evidence of how incorporating a shape-changing biofeedback physicalization (“Ankor”), into weekly mindfulness sessions can affect user engagement and intervention outcomes in a six-week DMHI RCT. Our primary findings show that participants who engaged with Ankor in once-a-week, 15-minute sessions exhibited significantly greater engagement; both in *physical* terms (e.g., more frequent at-home DMHI practice initiations, higher practice completion rates, and improved user retention) and in *psychological* terms (e.g., increased experiential self-regulation efforts), compared to those in an audio-only control condition. In addition, secondary outcome measures of well-being, mindfulness,

and interoceptive awareness indicated higher comparative efficacy for the Ankor condition, with the experimental group achieving more favourable effect sizes (Figure 5) and a coherent pattern of improvements across related dimensions (Figure 9 in the Appendix).

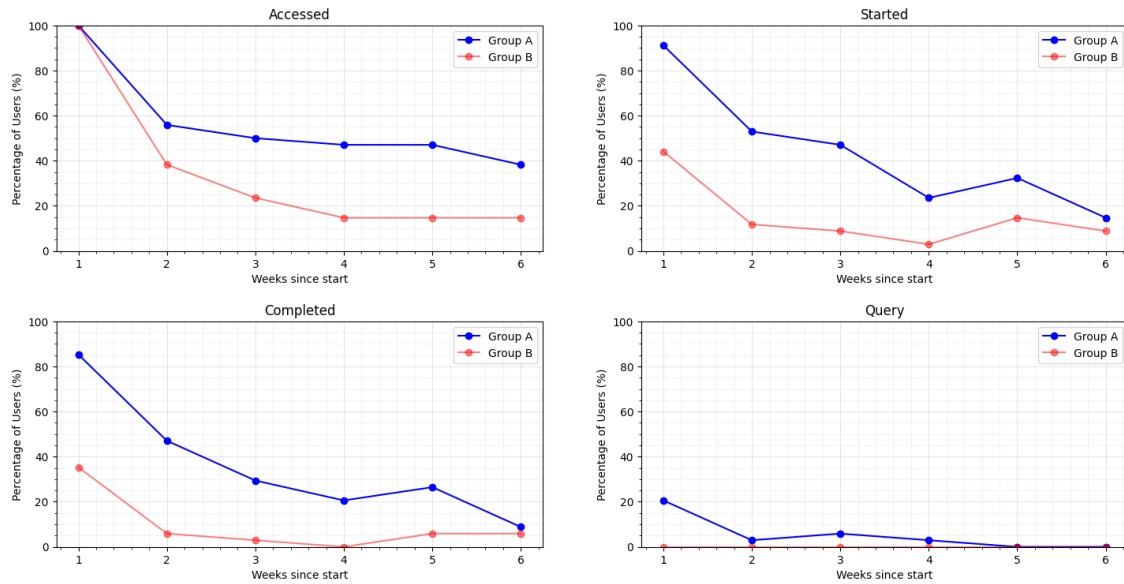
6.1 Engagement

6.1.1 Overview. In this study, 15-minute weekly interactions with Ankor produced a substantial uptake in out-of-session engagement with the mindfulness app. The experimental group not only had a greater number of *active users* between lab sessions, but also markedly increased at-home practice frequency, initiating 433 Medito tracks compared to 96 in the control group (a 351% increase) and completing 171 tracks compared to 68 in the control group (a 151.5% increase). After two weeks post-download, the audio-only control group's usage had fallen in line with known low-adherence trends (around 3.9% retention [11]), with only 1 out of 35 participants (2.9%) completing any mindfulness practice. By contrast, participants in the Ankor condition retained an active practice rate of 29.4% at week 2, indicating a greater sustained engagement rate with the DMHI platform. Notably, only the experimental group made use of the app's optional “query” function, whereas none in the control did. This suggests that the tactile biofeedback experience may motivate users to explore more of the app's resources, counteracting the common pattern in which users engage with only about 40% of available content in such interventions [31].

A closer inspection of the engagement data shows that initiation of DMHI practice was substantially higher in the Ankor group, although the proportion of completed sessions did not rise at the



(a) User engagement frequency across six weeks. group A and group B are displayed as separate, independent datasets overlaid for visual comparison. Users within each group are ordered by engagement level.



(b) The percentage of unique users actively engaged with the DMHI.

Figure 6: Digital engagement patterns. (a) Total interaction frequency per user. (b) Weekly engagement trends per week. Each subplot represents one event type (Accessed, Started, Completed, and Queried): See Figure 8 for event classifications.

same pace. This pattern does not necessarily reflect disengagement, as the DMHI platform classified sessions as “completed” only when the final second of audio had been reached. Users could therefore finish nearly the full session yet still be categorised as unfinished [13, 68]. Given the stronger physiological engagement and favourable psychological outcomes observed across the trial, it is plausible that the completion metric underestimated true adherence rather than signalling reduced persistence. Instead of implying a behavioural

deficit, this highlights a measurement limitation and points to a future opportunity; more granular tracking of session trajectories may help distinguish brief withdrawal from sustained practice, and better capture how curiosity transitions into deeper engagement over time [88].

Beyond raw usage metrics, the Ankor condition saw significant improvements in users’ motivational state. Over the six-week period, this group showed an 18% reduction in *amotivation*, reflecting

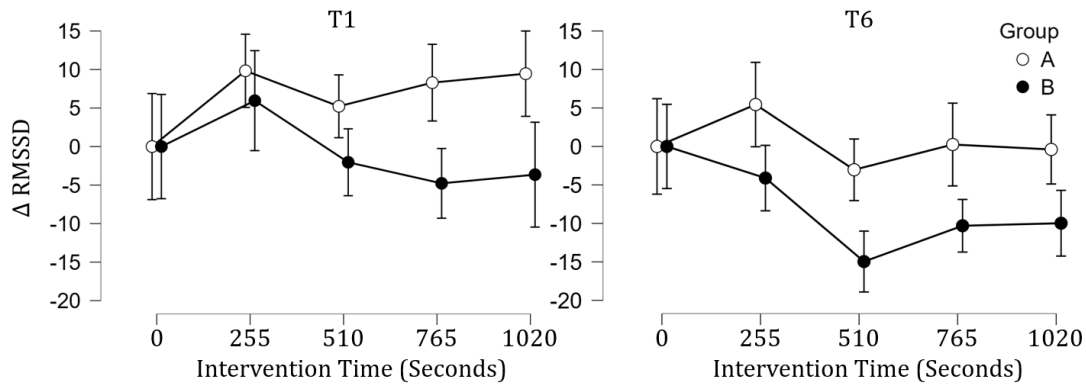


Figure 7: Elapsed intervention time of average Δ RMSSD across all T1 and T6 group participants during a in-lab mindfulness session.

enhanced personal agency and willingness to engage. While no significant between-group differences emerged in other motivational dimensions (intrinsic motivation, identified regulation, or external regulation), the selective reduction in amotivation is noteworthy. Participants exposed to Ankor reported fewer feelings of helplessness or inefficacy. This suggests an increased initiative to practice, where users felt more capable to continue using the DMHI on their own beyond the structured weekly sessions. Thus, we posit that Ankor’s tangible, real-time feedback, which simplified the core psychological technique of mindful breathing and enhancement of focus, helped overcome traditional barriers to engagement associated with amotivation, such as low expectations of benefit or perceived lack of competence [17, 47, 80].

Physiological evidence from the lab sessions further corroborates the engagement benefits of the Ankor device. During T1 and T6, participants using Ankor exhibited significantly greater changes in HRV compared to controls. RMSSD is a vagally-mediated measure of parasympathetic nervous system activity and is sensitive to shifts in autonomic regulation. The Ankor group’s higher Δ RMSSD during the mindfulness exercises suggests participants achieved a state of enhanced autonomic self-regulation and relaxation, indicative of deeper psychological engagement with the practice. Inferences from the HRV pattern (e.g., the inferred inhibition of sympathoexcitatory subcortical circuits associated with increased RMSSD [15, 100, 101]) imply that experimental participants experienced greater stress reduction and reduced physiological arousal during the sessions. While we caution that such neural inhibitory processes were not directly observed (only inferred from physiological proxies), this pattern aligns with prior studies of biofeedback-assisted engagement [26] and indicates a more profound meditative experience for Ankor users relative to the control group.

Hence, the convergence of behavioural and physiological evidence indicates that the shape-changing biofeedback physicalization made the mindfulness practice more salient and accessible. By providing a handheld, dynamic representation of the breath, Ankor lowered the effort required to engage with the exercises and strengthened users’ sense of agency. These factors likely reduced

amotivation and supported early habit formation [17, 80], explaining the substantially sustained DMHI usage observed outside the lab environment.

6.1.2 Implications. The findings reinforce and extend a growing body of work highlighting how biofeedback and haptic interaction can enhance user engagement. Our results resonate with prior evidence on the benefits of touch and biofeedback for learning [57, 86] and motivation [38, 60], and align with theories of embodied cognition [25, 74], embodied interaction [77, 78], somaeesthetics [36, 55], multisensory integration [22, 81], and operant conditioning [7, 86]. From these perspectives, Ankor’s ability to render an internal process into a concrete, continuously responsive physical experience leverages embodied learning mechanisms and reward feedback loops that make the act of mindfulness more compelling and intuitive.

Beyond the laboratory, even a modest improvement in out-of-session adherence can have effects on clinical outcomes and the cost-effectiveness of mental health programs. For example, in 2021–2022 the NHS Talking Therapies program in the UK spent approximately £596.8 million to deliver 4.7 million therapy sessions, averaging roughly £127 per appointment [63]. Excluding dropouts, an eight-session course thus costs in the order of £1,016 per patient when completed, yet only about 50.2% of those who finish treatment achieve recovery by program criteria. There is strong evidence that homework adherence outside of therapy sessions is positively linked to better therapeutic outcomes [16, 92]. Therefore, increasing patients’ between-session engagement has a direct path to improving recovery rates. As such, if a device like Ankor can boost the proportion of patients who actively practice their homework from a low baseline of 5% in week 5 to a more substantial rate of 25%, the overall recovery rate might rise from 50.2% to approximately 60.9%³. In the context of the NHS, this translates

³Two-group mixture calculation. Let p be the proportion of completers who adhere to homework, $R(p)$ the overall recovery rate among completers, and r_H, r_N the recovery probabilities for adherent and non-adherent patients with $r_H = k r_N$. Using the homework advantage $k = 68/32$ from [92], $R(p) = r_N (pk + 1 - p)$. Calibrating to the observed baseline $R(0.05) = 0.502$ gives $r_N = 0.502 / (0.05k + 0.95)$, or $R(0.25) \approx 0.607$ (60.9%)

to an estimated 72,600 more individuals recovering and around £64 million in annual savings due to improved efficiency of care⁴.

Crucially, this engagement mechanism demonstrated here is not specific to any single therapeutic app or content. By translating the natural act of breathing into a salient, easily perceptible cue, Ankor reduces the cognitive and attentional load required to initiate and maintain mindfulness practice, thereby providing a reliable scaffold for habit formation. These accessibility and engagement benefits could be especially impactful for populations that typically face higher barriers to engagement, including children, older adults, individuals with neurodevelopmental conditions (e.g., ADHD), and those with sensory impairments such as hearing or vision loss [14, 16]. In such groups, even brief in-session exposure to a device like Ankor, combined with ongoing access to a mobile app, may significantly increase adherence and skill acquisition across a range of therapeutic activities; from breathing exercises and mindfulness meditation to homework practice in cognitive-behavioural therapy (CBT) programs. Since user engagement is a key determinant of treatment success across digital interventions, integrating shape-changing biofeedback physicalizations as adjuncts in various delivery models (stepped-care pathways, wait-list support programs, group therapy courses, community well-being workshops, etc.) holds promise.

6.2 Efficacy

6.2.1 Overview. To understand benefits beyond engagement, this study also examined the efficacy outcomes of adding Ankor to DMHI delivery. Through WEMWBS, the experimental group showed a 27.3% improvement from T1 to T6, outperforming the control group's 19.4% gain by a margin of 7.9%. However through DASS, both conditions showed significant within-group reductions from baseline, but between-group differences at T6 were not statistically different. This result is consistent with a priori expectations that large between-group separation on symptom scales would be unlikely under six week non-clinical conditions [31]. Nevertheless, the favourable observations in well-being for the experimental group suggests that the device *increased the effective dose* of training by boosting both the amount and quality of practice, which in turn led to greater improvements in certain outcomes. In other words, Ankor's contribution manifested not in statistically better symptom relief, but in enhanced positive outcomes and skill gains that can be attributed to higher adherence and a deeper engagement with the mindfulness practice. This interpretation is supported by the pattern of secondary measures related to mindfulness skills, specifically the EMQ and the MAIA-2, where the Ankor group outperformed controls on several key subscales.

For example, the embodied skills that differentiated the groups map closely to theorised mechanisms of change. On the EMQ, Ankor users showed greater gains in *awareness of the mind–body connection* and *acceptance of feelings and bodily sensations*, alongside reduced *disconnection from the body*. In the EMQ framework these subscales index, respectively, the capacity to notice bidirectional associations between mental states and bodily cues, a non-avoidant

stance toward internal sensations, and the inverse of bodily connection as an anchor for attention [44, 45]. On the MAIA-2, Ankor produced advantages in *attention regulation*, *body listening*, *emotional awareness*, *self-regulation*, and *not-distracting*. These dimensions capture the ability to sustain and control attention to interoceptive signals, actively heed bodily cues for insight, recognise links between sensations and emotions, regulate distress by attending to the body, and refrain from avoiding unpleasant sensations [59]. Together, these profiles indicate a shift toward more precise interoceptive attunement and a more accepting, skilful engagement with somatic experience.

However, it is important to consider why these higher engagement levels did not translate into consistently stronger outcomes across all clinical and well-being scales, particularly given prior evidence that homework adherence predicts better therapeutic response [16, 92]. Eligibility criteria restricted participants to a mild-to-moderate well-being range (WEMWBS < 44), which introduced a ceiling effect that limited how much change could be observed on symptom scales in just six weeks. In our trial, both groups received an evidence-based mindfulness programme and showed meaningful within-group gains, and given the duration, non-clinical sample, and a design powered primarily for engagement and process measures rather than small symptom-level effects, limited scope remained for large between-group separation [31]. Under these conditions, increased adherence in the Ankor group is likely to have exerted its effects for underlying mechanisms rather than outcome, reinforcing embodied mindfulness and interoceptive regulatory skills without yet reaching the threshold required to produce substantial differential changes in broader well-being or symptom domains such as depression, anxiety, and stress. In line with stage models of psychological change [79, 94], our findings suggest that heightened engagement first manifests as improvements in skills and embodied processes, and that more intensive or prolonged deployment would likely be required for these gains to consolidate into robust, differential changes on clinical symptom scales.

For several reasons, this is theoretically coherent for a shape-changing biofeedback physicalization that continuously translates respiratory signals into graspable kinaesthetic and proprioceptive cues. First, Ankor lowers the attentional effort needed to locate and focus on the breath; participants did not have to rely solely on subtle internal sensations or memory to track their breathing, as the device provided an ever-present physical signal [60, 74]. This helped participants concentrate more easily and consistently, thereby strengthening their attention-regulation skills and their ability to *listen* to bodily cues; as reflected in the attention regulation and body listening improvements. Second, Ankor provided immediate, unambiguous feedback when attention lapses (the device's movement changes if one's breathing pattern is disrupted by mind-wandering), gently nudging users back to the present moment [43, 83]. This consistent feedback loop can stabilize the focus on interoceptive targets and discourage distraction [15]; which aligns with the observed gains in the MAIA-2 not-distracting dimension. Third, by allowing participants to feel the natural ebb and flow of their breath in an amplified form, Ankor encourages a more curious and accepting mindset toward bodily sensations. Instead of perceiving bodily signals as faint or abstract, users are literally holding and feeling a physical embodiment of those signals [48]. This clearer

⁴Estimates omit adjustments for drop-outs and downstream cost offsets; incorporating these factors would likely yield even greater savings and additional recoveries.

mapping between internal sensations and affective states heightens emotional awareness and give users a concrete means to regulate arousal through the body [102].

Linking these mechanistic insights back to our outcome measures, the embodied skill enhancements seen with Ankor provide a pathway from device use to the improved engagement and outcomes we recorded. By increasing interoceptive awareness and fostering an open, non-avoidant attitude toward bodily sensations, Ankor likely reduced the perceived effort and uncertainty associated with mindfulness practice [8, 14]. This, in turn, lowered users' resistance and ambivalence toward practice (i.e., reduce amotivation), encouraging them to practice more frequently on their own; which is consistent with the significant boost in outside-session app usage. At the same time, the richer interoceptive skills endowed Ankor users with tools that generalize beyond the lab setting, helping them manage stress and emotions in their daily lives. This explains why the Ankor group showed a larger improvement in WEMWBS. In essence, Ankor appears to have augmented the effectiveness of the mindfulness training by both increasing the quantity of practice (greater adherence) and enhancing the quality of learning (deeper skill acquisition), thereby providing a double benefit that supports better day-to-day emotional regulation [45, 59, 71].

6.2.2 Implications. In light of this, secondary outcomes indicate that Ankor can preferentially enhance positive mental health and embodied skill acquisition within a short, low-intensity programme. Taken together, the EMQ and MAIA-2 profiles indicate strengthened interoceptive clarity and a less avoidant stance toward somatic cues; equipping users to detect early physiological markers of stress and apply body-based strategies promptly during and beyond practice [66, 71, 102]. Such mechanisms provide a coherent route from device-supported training to greater day-to-day regulation and broader improvements in well-being under conservative trial conditions.

These effects are most relevant in contexts where positive valence and skill generalisation are valued outcomes. For example, clinical services deploying mindfulness or skills blocks could use these technologies to deepen embodied mechanisms that underwrite transfer to daily life, such as sustained attention tasks [101, 106] and non-reactive acceptance of sensations [70]. Therefore, these findings again further motivate targeting populations characterised by low interoceptive clarity or high sensation avoidance, including individuals who report difficulty locating the breath, those with pronounced cognitive load during practice, or users who struggle to translate in-session understanding into everyday regulation [8, 16, 66].

6.3 Generalizability

Though the present evaluation was confined to a single controlled setting with participants experiencing reduced well-being, the design principles and engagement mechanisms of Ankor appear broadly applicable. DMHIs support a wide range of mental-health and well-being conditions, and there is no strong reason to expect that the benefits of embodied, shape-changing biofeedback would be limited to our tested context. By providing dynamic, tangible feedback that engages the body directly, Ankor fosters self-awareness and motivation –skills that are foundational not only

for individuals with diagnosable conditions but also for everyday practices of mental well-being. For instance, the well-established benefits of meditation [6, 103] are tightly aligned with the embodied mode of engagement that Ankor enables. This suggests considerable potential for Ankor to enhance engagement across a broad spectrum of interventions and user populations.

Our preference for a shape-changing embodied interface was theoretically motivated, where frameworks of embodied cognition and somaesthetic design argue that actively involving the body enhances attention, awareness, and motivation [36]. Consistent with these perspectives, our findings indicate that Ankor's benefits stem from its kinaesthetic, shape-changing qualities rather than its specific spherical morphology. Other tangible and kinaesthetic devices that employ similar handheld embodied dynamics could plausibly yield comparable outcomes, though further empirical validation will be required to substantiate this assumption.

6.4 Limitations

While our study was designed to emulate aspects of real-world therapy delivery, several limitations must be acknowledged when interpreting the results. Despite efforts to simulate a clinical format, the experiment was conducted in a controlled setting with a non-clinical university population. This relatively homogeneous sample may engage with digital mindfulness training differently than individuals seeking treatment for mental health conditions, but trial participation and non-contingent incentives may nonetheless inflate engagement levels compared to naturalistic use [10, 28]. Recruitment from the same institution introduced a further limitation regarding blinding. Although participants were not informed of multiple conditions and were scheduled individually, informal discussion outside study sessions could not be fully controlled, meaning that complete maintenance of the single-blind design cannot be guaranteed. Additionally, the study was not pre-registered; while this was considered appropriate for an exploratory non-clinical design, future confirmatory research would benefit from pre-registration to enhance methodological transparency and mitigate the potential for selective reporting. In more complex clinical contexts, where users may present with a wider range of symptoms, comorbidities, or motivational challenges, further adaptations or support mechanisms may be necessary to achieve comparable levels of engagement and efficacy.

Further, the mechanisms driving the observed increases in engagement and outcomes remain ambiguous. Our data showed that adding Ankor led to higher engagement metrics, but it is not yet clear whether this reflects improved adherence to the mindfulness practices themselves or whether the device prompted more frequent app interactions that may or may not equate to deeper mindfulness practice. Similarly, where we found differences in secondary outcomes like interoceptive awareness and well-being, it is uncertain to what extent those arose because Ankor helped participants practice mindfulness more consistently versus making each instance of practice more effective (or both). Existing literature hints that these factors likely work together in a synergistic way [16, 34, 39, 92], but our study was not explicitly designed to disentangle them. Moreover, our sample was predominantly young adult females, preventing any stratified analysis of whether engagement or outcome

patterns varied by gender or age, which is a potentially relevant consideration given evidence that demographics may adopt different motivational orientations in DMHI contexts [50]. Addressing this uncertainty will require more fine-grained research. Future studies should incorporate direct, objective measures of mindfulness practice quality and internal change. Such data would help clarify how a device like Ankor influences users' engagement behaviour and whether it fundamentally changes the nature of their mindfulness practice, beyond just increasing its frequency.

Another limitation concerns the extent to which the observed engagement effects can be cleanly attributed to the specific design properties of Ankor, as opposed to a novelty response to an additional artefact [87]. All participants received an evidence-based DMHI and attended structurally identical weekly laboratory sessions; the only systematic difference between conditions was the presence or absence of Ankor. Out-of-session engagement was measured across the remaining week, during which both groups only had access to the same smartphone app. The fact that the Ankor group showed higher DMHI use throughout the week, including greater rates of voluntary app access, track initiation, and exploratory query behaviour, suggests that the intervention operated primarily through carry-over mechanisms rather than through continuous exposure to a novel object in the home environment [87]. In other words, any novelty effect associated with handling a new artefact was temporally and spatially constrained to a small proportion of participants' week, yet the behavioural footprint of the intervention emerged in out-of-session practice windows where the artefact was absent and only the psychological and bodily skills acquired in the lab could influence behaviour.

However, the study design cannot disentangle which specific components of Ankor are responsible for these benefits. The device simultaneously introduced multiple changes relative to the audio-only control, such as the presence of an additional artefact, its handheld and tactile nature, its shape-changing behaviour, and the contingent biofeedback link to respiration. Our results therefore speak to the effect of this composite system rather than isolating the incremental contribution of each design element. Accordingly, our claims are therefore framed at the level of integrated shape-changing biofeedback physicalizations as adjuncts to DMHIs.

Finally, we observed a notable divergence between some of the subjective self-report measures and the objective physiological and app metrics, which raises future methodological considerations. In our study, participants' self-reported perceptions of engagement did not always parallel the physiological signs of engagement and relaxation. There are a couple of potential explanations for this discrepancy. One is that the self-report instruments we used might not have fully captured the nuances of participants' experiences with Ankor. Another possibility is that participants' subjective sense of engagement simply differs from their physiological state. For instance, users might not consciously register the depth of their low-arousal states, or conversely, they might feel engaged even when their bodies indicate stress. This misalignment highlights the challenge of measuring experiential qualities in technology-assisted interventions. To improve the validity and reliability of evaluation in future work, researchers should examine these self-report vs. objective measurement gaps more closely.

6.5 Conclusion

Our findings illustrate that tangible artefacts are not only capable of improving adherence and skill uptake within DMHIs, but can do so by targeting a piece of the therapeutic process that is frequently overlooked in technology design, namely, how people sustain practice between structured sessions. Much of the existing work on novel interfaces and mental health technologies focuses on short-term in-lab experiences, proximal user satisfaction, or symptom outcomes, rather than on the ongoing cognitive and motivational demands of adhering to practice over time. By combining longitudinal app metrics, physiological indices, and validated self-report measures, this study demonstrates that a shape-changing biofeedback physicalization can shift both engagement patterns and embodied skills in a way that persists beyond the immediate interaction with the device. In doing so, our work highlights the importance of designing technologies not only to deliver content or optimise interactions, but to scaffold the formation of durable, embodied habits of self-regulation. We argue that embedding this perspective into the design of new technologies and interfaces is essential if digital mental health tools are to move beyond novelty and aesthetics toward sustained, real-world impact.

Acknowledgments

This project has received funding from the European Research Council (ERC) under the European Union's Horizon 2020 research and innovation programme (FORCE-UI, Grant agreement No. 853063).

References

- [1] Ben Ainsworth, Jemma E. Marshall, Daniel Meron, David S. Baldwin, Paul Chadwick, Marcus R. Munafò, and Matthew Garner. 2015. Evaluating psychological interventions in a novel experimental human model of anxiety. *Journal of Psychiatric Research* 63 (4 2015), 117–122. <https://doi.org/10.1016/j.jpsychires.2015.02.001>
- [2] Jason Alexander, Anne Roudaut, Jürgen Steimle, Kasper Hornbæk, Miguel Bruns Alonso, Sean Follmer, and Timothy Merritt. 2018. Grand challenges in Shape-changing interface research. *Conference on Human Factors in Computing Systems - Proceedings* 2018-April (4 2018). <https://doi.org/10.1145/3173574.3173873>
- [3] K. Anders Ericsson and Kyle W. Harwell. 2019. Deliberate practice and proposed limits on the effects of practice on the acquisition of expert performance: why the original definition matters and recommendations for future research. *Frontiers in Psychology* 10, OCT (10 2019), 470063. <https://doi.org/10.3389/fpsyg.2019.02396/BIBTEX>
- [4] Ali Asadi, Oliver Niebuhr, Jonas Jorgensen, and Kerstin Fischer. 2022. Inducing Changes in Breathing Patterns Using a Soft Robot. *ACM/IEEE International Conference on Human-Robot Interaction 2022-March* (2022), 683–687. <https://doi.org/10.1109/HRI53351.2022.9889343>
- [5] Sufyan Ashhad, Kaiwen Kam, Christopher A. Del Negro, and Jack L. Feldman. 2022. Breathing Rhythm and Pattern and Their Influence on Emotion. *Annual review of neuroscience* 45 (7 2022), 223–247. <https://doi.org/10.1146/ANNUREV-NEURO-090121-014424>
- [6] Katherine M Auty, Aiden Cope, and Alison Liebling. 2017. A Systematic Review and Meta-Analysis of Yoga and Mindfulness Meditation in Prison: Effects on Psychological Well-Being and Behavioural Functioning. , 689–710 pages. <https://doi.org/10.1177/0306624X15602514>
- [7] Przemysław Bąbel. 2020. Operant conditioning as a new mechanism of placebo effects. *European Journal of Pain* 24, 5 (5 2020), 902–908. <https://doi.org/10.1002/EJP.1544>
- [8] Moitree Banerjee, Kate Cavanagh, and Clara Strauss. 2018. Barriers to Mindfulness: a Path Analytic Model Exploring the Role of Rumination and Worry in Predicting Psychological and Physical Engagement in an Online Mindfulness-Based Intervention. *Mindfulness* 9, 3 (6 2018), 980–992. <https://doi.org/10.1007/S12671-017-0837-4/TABLES/2>
- [9] Matthew Barker and Janet Van Der Linden. 2017. Sprite catcher: A handheld self reflection and mindfulness tool for mental healthcare. In *TEI 2017 - Proceedings of the 11th International Conference on Tangible, Embedded, and Embodied*

- Interaction*. Association for Computing Machinery, Inc, New York, NY, USA, 419–425. <https://doi.org/10.1145/3024969.3025068>
- [10] Amit Baumel and John M. Kane. 2018. Examining Predictors of Real-World User Engagement with Self-Guided eHealth Interventions: Analysis of Mobile Apps and Websites Using a Novel Dataset. *J Med Internet Res* 20(12):e11491 <https://www.jmir.org/2018/12/e11491> 20, 12 (12 2018), e11491. <https://doi.org/10.2196/11491>
 - [11] Amit Baumel, Frederick Muench, Stav Edan, and John M. Kane. 2019. Objective User Engagement With Mental Health Apps: Systematic Search and Panel-Based Usage Analysis. *Journal of medical Internet research* 21, 9 (9 2019). <https://doi.org/10.2196/14567>
 - [12] Theodore P. Beauchaine and Julian F. Thayer. 2015. Heart rate variability as a transdiagnostic biomarker of psychopathology. *International Journal of Psychophysiology* 98, 2 (11 2015), 338–350. <https://doi.org/10.1016/J.IJPSYCHO.2015.08.004>
 - [13] Laura Esther Bijkerk, Anke Oenema, Nicole Geschwind, and Mark Spigt. 2023. Measuring Engagement with Mental Health and Behavior Change Interventions: an Integrative Review of Methods and Instruments. *International Journal of Behavioral Medicine* 30, 2 (4 2023), 155–166. <https://doi.org/10.1007/S12529-022-10086-6/TABLES/1>
 - [14] Judith Borghouts, Elizabeth Eikey, Gloria Mark, Cinthia De Leon, S. M. Schueller, Margaret Schneider, Nicole Stadnick, Kai Zheng, Dana Mukamel, and Dara H. Sorkin. 2021. Barriers to and Facilitators of User Engagement With Digital Mental Health Interventions: Systematic Review. *J Med Internet Res* 23, 3 (3 2021), e24387. <https://doi.org/10.2196/24387>
 - [15] Roberta Bortolla, Marco Galli, Ga Elena Spada, and Cesare Maffei. 2022. Mindfulness Effects on Mind Wandering and Autonomic Balance. *Applied Psychophysiology Biofeedback* 47, 1 (3 2022), 53–64. <https://doi.org/10.1007/S10484-021-09527-X/TABLES/4>
 - [16] Brian E. Bunnell, Lynne S. Nemeth, Leslie A. Lenert, Nikolaos Kazantzis, Esther Deblinger, Kristen A. Higgins, and Kenneth J. Ruggiero. 2021. Barriers Associated with the Implementation of Homework in Youth Mental Health Treatment and Potential Mobile Health Solutions. *Cognitive Therapy and Research* 45, 2 (4 2021), 272–286. <https://doi.org/10.1007/S10608-020-10090-8/TABLES/8>
 - [17] Sung Hyeon Cheon and Johnmarshall Reeve. 2015. A classroom-based intervention to help teachers decrease students' amotivation. *Contemporary Educational Psychology* 40 (1 2015), 99–111. <https://doi.org/10.1016/J.CEDPSYCH.2014.06.004>
 - [18] Kyung Yun Choi, Jinmo Lee, Neska Elhaoui, Rosalind Picard, and Hiroshi Ishii. 2021. ASpire: Clippable, Mobile Pneumatic-Haptic Device for Breathing Rate Regulation via Personalizable Tactile Feedback. *Conference on Human Factors in Computing Systems - Proceedings* (5 2021). <https://doi.org/10.1145/3411763.3451602>
 - [19] Heather Culbertson, Samuel B. Schorr, and Allison M. Okamura. 2018. Haptics: The Present and Future of Artificial Touch Sensation. *Annual Review of Control, Robotics, and Autonomous Systems* 1, Volume 1, 2018 (5 2018), 385–409. <https://doi.org/10.1146/ANNUREV-CONTROL-060117-105043/CITE/REFWORKS>
 - [20] Olga Dobrushina, Yossi Tamim, Iddo Yehoshua Wald, Amber Maimon, and Amir Amedi. 2024. Interoceptive training with real-time haptic versus visual heartbeat feedback. *Psychophysiology* (8 2024). <https://doi.org/10.1111/PSYP.14648>
 - [21] Michael Eggart, Jennifer Todd, and Juan Valdes-Stauber. 2021. Validation of the Multidimensional Assessment of Interoceptive Awareness (MAIA-2) questionnaire in hospitalized patients with major depressive disorder. *PLOS ONE* 16, 6 (6 2021), e0253913. <https://doi.org/10.1371/JOURNAL.PONE.0253913>
 - [22] Henrik H. Ehrsson. 2020. Multisensory processes in body ownership. *Multisensory Perception: From Laboratory to Clinic* (1 2020), 179–200. <https://doi.org/10.1016/B978-0-12-812492-5.00008-5>
 - [23] Elisabeth Eichhorn. 2010. Recording inner life. In *TEI'10 - Proceedings of the 4th International Conference on Tangible, Embedded, and Embodied Interaction*. ACM Press, New York, New York, USA, 313–314. <https://doi.org/10.1145/1709886.1709959>
 - [24] Osborne EL., Ainsworth B., Hooper N., and Atkinson MJ. 2022. Barriers and Facilitators to Engagement in Digital Mindfulness-Based Interventions: A Rapid Scoping Review and Thematic Synthesis. (11 2022). <https://doi.org/10.2196/PREPRINTS.44220>
 - [25] Mirko Farina. 2020. Embodied cognition: dimensions, domains and applications. <https://doi.org/10.1177/1059712320912963> 29, 1 (5 2020), 73–88. <https://doi.org/10.1177/1059712320912963>
 - [26] Alexz Farrall, Jordan Taylor, Ben Ainsworth, and Jason Alexander. 2023. Manifesting Breath: Empirical Evidence for the Integration of Shape-changing Biofeedback-based Artefacts within Digital Mental Health Interventions. *Conference on Human Factors in Computing Systems* (2023).
 - [27] Feng Feng, Dan Bennett, Zhi-jun Fan, and Oussama Metatla. 2022. It's Touching: Understanding Touch-Affect Association in Shape-Change with Kinematic Features. *CHI Conference on Human Factors in Computing Systems* (4 2022), 1–18. <https://doi.org/10.1145/3491102.3502003>
 - [28] Theresa Fleming, Lynda Bavin, Mathijs Lucassen, Karolina Stasiak, Sarah Hopkins, and Sally Merry. 2018. Beyond the Trial: Systematic Review of Real-World Uptake and Engagement With Digital Self-Help Interventions for Depression, Low Mood, or Anxiety. *J Med Internet Res* 20(6):e199 <https://www.jmir.org/2018/6/e199> 20, 6 (6 2018), e2975. <https://doi.org/10.2196/JMIR.9275>
 - [29] Asma Ghandeharioun and Rosalind Picard. 2017. BrightBeat: Effortlessly influencing breathing for cultivating calmness and focus. In *Conference on Human Factors in Computing Systems - Proceedings*, Vol. Part F1276. Association for Computing Machinery, New York, NY, USA, 1624–1631. <https://doi.org/10.1145/3027063.3053164>
 - [30] Simon B Goldberg, Raymond P Tucker, Preston A Greene, Richard J Davidson, Bruce E Wampold, David J Kearney, and Tracy L Simpson. 2018. Mindfulness-based interventions for psychiatric disorders: A systematic review and meta-analysis. , 52–60 pages. <https://doi.org/10.1016/j.cpr.2017.10.011>
 - [31] Julia Groot, Alexander MacLellan, Madelaine Butler, Elisa Todor, Mahnoor Zulfiqar, Timothy Thackrah, Christopher Clarke, Mark Brosnan, and Ben Ainsworth. 2023. The Effectiveness of Fully Automated Digital Interventions in Promoting Mental Well-Being in the General Population: Systematic Review and Meta-Analysis. *JMIR* 10, 1 (10 2023), e44658. <https://doi.org/10.2196/44658>
 - [32] Frédéric Guay, Robert J. Vallerand, and Céline Blanchard. 2000. On the assessment of situational intrinsic and extrinsic motivation: The Situational Motivation Scale (SIMS). *Motivation and Emotion* 24, 3 (2000), 175–213. <https://doi.org/10.1023/A:1005614228250/METRICS>
 - [33] Beverly A. Haarhoff and Nikolaos Kazantzis. 2007. How to Supervise the Use of Homework in Cognitive Behavior Therapy: The Role of Trainee Therapist Beliefs. *Cognitive and Behavioral Practice* 14, 3 (8 2007), 325–332. <https://doi.org/10.1016/J.CBPRA.2006.08.004>
 - [34] Elisa Haller and Birgit Watzke. 2021. The Role of Homework Engagement, Homework-Related Therapist Behaviors, and Their Association with Depressive Symptoms in Telephone-Based CBT for Depression. *Cognitive Therapy and Research* 45, 2 (4 2021), 224–235. <https://doi.org/10.1007/S10608-020-10136-X/TABLES/6>
 - [35] Alice C. Haynes, Christopher Kent, and Jonathan Rossiter. 2024. Just a Breath Away: Investigating Interactions with and Perceptions of Mediated Breath via a Haptic Cushion. *ACM International Conference Proceeding Series* (2 2024). <https://doi.org/10.1145/3623509.3633384>
 - [36] Kristina Höök, Anna Ståhl, Martin Jonsson, Johanna Mercurio, Anna Karlsson, and Eva Carin Banka Johnson. 2015. Somaesthetic design. *Interactions* 22, 4 (7 2015), 26–33. <https://doi.org/10.1145/2770888>
 - [37] Susan A. Jackson and Herbert W. Marsh. 1996. Development and validation of a scale to measure optimal experience: The Flow State Scale. *Journal of Sport & Exercise Psychology* 18, 1 (1996). <https://doi.org/10.1123/JSEP.18.1.17>
 - [38] Yvonne Jansen, Pierre Dragicevic, Petra Isenberger, Jason Alexander, Abhijit Karnik, Johan Kildal, Sriram Subramanian, and Kasper Hornbæk. 2015. Opportunities and challenges for data physicalization. In *Conference on Human Factors in Computing Systems - Proceedings*, Vol. 2015-April. Association for Computing Machinery, New York, NY, USA, 3227–3236. <https://doi.org/10.1145/2702123.2702180>
 - [39] Nikolaos Kazantzis, Georgios K. Lampropoulos, and Frank P. Deane. 2005. A national survey of practicing psychologists' use and attitudes toward homework in psychotherapy. *Journal of consulting and clinical psychology* 73, 4 (8 2005), 742–748. <https://doi.org/10.1037/0022-006X.73.4.742>
 - [40] Nikolaos Kazantzis, Craig Whittington, and Frank Dattilio. 2010. Meta-analysis of homework effects in cognitive and behavioral therapy: A replication and extension. *Clinical Psychology: Science and Practice* 17, 2 (6 2010), 144–156. <https://doi.org/10.1111/J.1468-2850.2010.01204.X>
 - [41] Chelsea Kelling, Daniella Pitaro, and Jussi Rantala. 2016. Good vibes: The impact of haptic patterns on stress levels. In *AcademicMindtrek 2016 - Proceedings of the 20th International Academic Mindtrek Conference*. ACM, New York, NY, USA, 130–136. <https://doi.org/10.1145/2994310.2994368>
 - [42] Andrew H. Kemp and Daniel S. Quintana. 2013. The relationship between mental and physical health: Insights from the study of heart rate variability. *International Journal of Psychophysiology* 89, 3 (9 2013), 288–296. <https://doi.org/10.1016/J.IJPSYCHO.2013.06.018>
 - [43] Lauren Kennedy and Sarah Henrickson Parker. 2019. Biofeedback as a stress management tool: a systematic review. *Cognition, Technology and Work* 21, 2 (5 2019), 161–190. <https://doi.org/10.1007/s10111-018-0487-x>
 - [44] Bassam Khoury, Bärbel Knäuper, Francesco Pagnini, Natalie Trent, Alberto Chiesa, and Kimberly Carrière. 2017. Embodied Mindfulness. *Mindfulness* 8, 5 (10 2017), 1160–1171. <https://doi.org/10.1007/S12671-017-0700-7/TABLES/1>
 - [45] Bassam Khoury, Rodrigo C. Vergara, Christina Spinelli, and Isabel Sadowski. 2023. Embodied Mindfulness Questionnaire (EMQ). *Handbook of Assessment in Mindfulness Research* (2023), 1–14. https://doi.org/10.1007/978-3-030-77644-2_74-1
 - [46] Jina Kim, Young Woo Park, and Tek Jin Nam. 2015. BreathingFrame: An inflatable frame for remote breath signal sharing. In *TEI 2015 - Proceedings of the 9th International Conference on Tangible, Embedded, and Embodied Interaction*. ACM, New York, NY, USA, 109–112. <https://doi.org/10.1145/2677199.2680606>

- [47] Yasuhiro Kotera, Kenichi Asano, Hiromasa Kotera, Remi Ohshima, and Annabel Rushforth. 2022. Mental Health of Japanese Workers: Amotivation Mediates Self-Compassion on Mental Health Problems. *International Journal of Environmental Research and Public Health* 2022, Vol. 19, Page 10497 19, 17 (8 2022), 10497. <https://doi.org/10.3390/IJERPH191710497>
- [48] Virpi Liisa Kyyri, Anu Karvonen, Jarl Wahlström, Jukka Kaartinen, Markku Penttonen, and Jaakko Seikkula. 2017. Soft Prosody and Embodied Attunement in Therapeutic Interaction: A Multimethod Case Study of a Moment of Change. *Journal of Constructivist Psychology* 30, 3 (7 2017), 211–234. <https://doi.org/10.1080/10720537.2016.1183538>
- [49] Suzet Tanya Lereya, Meera Patel, Joao Pedro Garcez Aurelio dos Santos, and Jessica Deighton. 2019. Mental health difficulties, attainment and attendance: a cross-sectional study. *European Child and Adolescent Psychiatry* 28, 8 (8 2019), 1147–1152. <https://doi.org/10.1007/S00787-018-01273-6/TABLES/2>
- [50] Jessica M. Lipschitz, Chelsea K. Pike, Timothy P. Hogan, Susan A. Murphy, and Katherine E. Burdick. 2023. The Engagement Problem: A Review of Engagement with Digital Mental Health Interventions and Recommendations for a Path Forward. *Current Treatment Options in Psychiatry* 10, 3 (9 2023), 119–135. <https://doi.org/10.1007/S40501-023-00297-3/FIGURES/1>
- [51] Sunniva Liu, Jianzhe Gu, Dinesh K. Patel, and Lining Yao. 2024. breathHaptics: Enabling Granular Rendering of Breath Signals via Haptics using Shape-Changing Soft Interfaces. *ACM International Conference Proceeding Series* (2 2024). <https://doi.org/10.1145/3623509.3633372>
- [52] Miroslav Macik, Katerina Prazakova, Anna Kutikova, Zdenek Mikovec, Jindrich Adolf, Jan Havlik, and Ivana Jilekova. 2017. Breathing friend: Tackling stress through portable tangible breathing artifact. In *Lecture Notes in Computer Science (including subseries Lecture Notes in Artificial Intelligence and Lecture Notes in Bioinformatics)*, Vol. 10516 LNCS. Springer Verlag, 106–115. https://doi.org/10.1007/978-3-319-68059-0_6
- [53] Diana MacLean, Asta Roseway, and Mary Czerwinski. 2013. MoodWings: A wearable biofeedback device for real-time stress intervention. In *ACM International Conference Proceeding Series*. ACM Press, New York, New York, USA, 1–8. <https://doi.org/10.1145/2504335.2504406>
- [54] Hendramoorthy Maheswaran, Scott Weich, John Powell, and Sarah Stewart-Brown. 2012. Evaluating the responsiveness of the Warwick Edinburgh Mental Well-Being Scale (WEMWBS): Group and individual level analysis. *Health and Quality of Life Outcomes* 10, 1 (12 2012), 1–8. <https://doi.org/10.1186/1477-7525-10-156/TABLES/3>
- [55] Diego Silang Maranan. 2017. Haplós: Towards Technologies for and Applications of Somaesthetics. *School of Art, Design and Architecture Theses* (1 2017). <https://pearl.plymouth.ac.uk/ada-theses/80>
- [56] Alessio Matiz, Cristiano Crescentini, Anastasia Fabbro, Riccardo Budai, Massimo Bergamasco, and Franco Fabbro. 2019. Spontaneous eye movements during focused-attention mindfulness meditation. *PLoS ONE* 14, 1 (1 2019). <https://doi.org/10.1371/JOURNAL.PONE.0210862>
- [57] Glenys McGowan, Gerhard Hoffstaedter, and Jennifer Creese. 2022. Object Based Learning in the Social Sciences: Three Approaches to Haptic Knowledge Making. *Teaching Anthropology* 11, 2 (7 2022), 97–107. <https://doi.org/10.22582/TA.V11I2.657>
- [58] Medito Foundation. 2025. App Information Homepage. <https://meditofoundation.org/medito-app>
- [59] Wolf E. Mehling, Michael Acree, Anita Stewart, Jonathan Silas, and Alexander Jones. 2018. The multidimensional assessment of interoceptive awareness, version 2 (MAIA-2). *PLoS ONE* 13, 12 (12 2018). <https://doi.org/10.1371/JOURNAL.PONE.0208034>
- [60] Clara Moge, Katherine Wang, and Youngjun Cho. 2022. Shared User Interfaces of Physiological Data: Systematic Review of Social Biofeedback Systems and Contexts in HCI. *Conference on Human Factors in Computing Systems - Proceedings* (4 2022). <https://doi.org/10.1145/3491102.3517495>
- [61] Stuart Moran, Nils Jäger, Holger Schnädelbach, and Kevin Glover. 2016. Exo-Pranayama: a biofeedback-driven actuated environment for supporting yoga breathing practices. *Personal and Ubiquitous Computing* 20, 2 (4 2016), 261–275. <https://doi.org/10.1007/s00779-016-0910-3>
- [62] Felicity Ng, Tom Trauer, Seetal Dodd, Tom Callaly, Shirley Campbell, and Michael Berk. 2007. The validity of the 21-item version of the Depression Anxiety Stress Scales as a routine clinical outcome measure. *Acta neuropsychiatrica* 19, 5 (2007), 304–310. <https://doi.org/10.1111/J.1601-5215.2007.00217.X>
- [63] NHS England Digital. 2023. Mental Health, IAPT, Community and Ambulance. <https://digital.nhs.uk/data-and-information/publications/statistical/patient-level-activity-and-costing/2021-22/mental-health-iapt-community-and-ambulance>
- [64] Siobhan O'Connor, Peter Hanlon, Catherine A. O'Donnell, Sonia Garcia, Julie Glanville, and Frances S. Mair. 2016. Barriers and facilitators to patient and public engagement and recruitment to digital health interventions: protocol of a systematic review of qualitative studies. , e010895 pages. <https://doi.org/10.1136/bmjopen-2015-010895>
- [65] Julian Packheiser, Helena Hartmann, Kelly Fredriksen, Valeria Gazzola, Christian Keyzers, and Frédéric Michon. 2024. A systematic review and multivariate meta-analysis of the physical and mental health benefits of touch interventions. *Nature Human Behaviour* 2024 (4 2024), 1–20. <https://doi.org/10.1038/s41562-024-01841-8>
- [66] Heekyeong Park, Stella M. Sanchez, Rayus Kuplicki, Aki Tsuchiyagaito, Sahib S. Khalsa, Martin P. Paulus, and Salvador M. Goinjoan. 2022. Attenuated interoceptive processing in individuals with major depressive disorder and high repetitive negative thinking. *Journal of Psychiatric Research* 156 (12 2022), 237–244. <https://doi.org/10.1016/J.JPSYCHIRES.2022.10.020>
- [67] Rakesh Patibanda, Florian Mueller, Matevz Leskovsek, and Jonathan Duckworth. 2017. Life tree: Understanding the design of breathing exercise games. *CHI PLAY 2017 - Proceedings of the Annual Symposium on Computer-Human Interaction in Play* (10 2017), 19–31. https://doi.org/10.1145/3116595.3116621/SUPPL1/_FILE/CHIP220.MP4
- [68] Olga Perski, Ann Blandford, Robert West, and Susan Michie. 2017. Conceptualising engagement with digital behaviour change interventions: a systematic review using principles from critical interpretive synthesis. *Translational behavioral medicine* 7, 2 (6 2017), 254–267. <https://doi.org/10.1007/S13142-016-0453-1>
- [69] Alex Pollock, Pauline Campbell, Joshua Cheyne, Julie Cowie, Bridget Davis, Jacqueline McCallum, Kris McGill, Andrew Elders, Suzanne Hagen, Doreen McClurg, Claire Torrens, and Margaret Maxwell. 2020. Interventions to support the resilience and mental health of frontline health and social care professionals during and after a disease outbreak, epidemic or pandemic: a mixed methods systematic review. *The Cochrane database of systematic reviews* 11, 11 (11 2020). <https://doi.org/10.1002/14651858.CD013779>
- [70] Mark B. Powers, Maarten B. Zum Vörde Sive Vörding, and Paul M.G. Emmelkamp. 2009. Acceptance and Commitment Therapy: A Meta-Analytic Review. *Psychotherapy and Psychosomatics* 78, 2 (3 2009), 73–80. <https://doi.org/10.1159/000190790>
- [71] Cynthia J. Price and Carole Hooven. 2018. Interoceptive awareness skills for emotion regulation: Theory and approach of mindful awareness in body-oriented therapy (MABT). *Frontiers in Psychology* 9, MAY (5 2018), 335233. <https://doi.org/10.3389/FPSYG.2018.00798/BIBTEX>
- [72] Mirjana Prpa, Ekaterina R. Stepanova, Thecla Schiphorst, Bernhard E. Riecke, and Philippe Pasquier. 2020. Inhaling and Exhaling: How Technologies Can Perceptually Extend our Breath Awareness. In *Conference on Human Factors in Computing Systems - Proceedings*. Association for Computing Machinery, New York, NY, USA, 1–15. <https://doi.org/10.1145/3313831.3376183>
- [73] Masha Remskar, Max J. Western, and Ben Ainsworth. 2024. Mindfulness improves psychological health and supports health behaviour cognitions: Evidence from a pragmatic RCT of a digital mindfulness-based intervention. *British Journal of Health Psychology* 00 (2024), 1–18. <https://doi.org/10.1111/BJHP.12745>
- [74] Aryan Saini, Haotian Huang, Rakesh Patibanda, Nathalie Overdeest, Elise Van Den Hoven, and Florian Floyd Mueller. 2022. SomaFlatables: Supporting Embodied Cognition through Pneumatic Bladders. *UIST 2022 Adjunct - Adjunct Proceedings of the 35th Annual ACM Symposium on User Interface Software and Technology* (10 2022). <https://doi.org/10.1145/3526114.3558705>
- [75] Kim Sauvé, Miriam Sturdee, and Steven Houben. 2022. Physecology: A Conceptual Framework to Describe Data Physicalizations in their Real-World Context. *ACM Transactions on Computer-Human Interaction* 29, 3 (1 2022). <https://doi.org/10.1145/3505590>
- [76] Sharon L. Scandrett, Judith L. Bean, Susan Breeden, and Sandra Powell. 1986. A Comparative Study of Biofeedback and Progressive Relaxation in Anxious Patients. *Issues in Mental Health Nursing* 8, 3 (1986), 255–271. <https://doi.org/10.3109/01612848609014571>
- [77] M. C. Schraefel. 2021. Inbodied Interaction 101: A First Course in Practical Anatomy & Physiology for HCI Designers, Researchers and Engineers. *Conference on Human Factors in Computing Systems - Proceedings* (5 2021). <https://doi.org/10.1145/3411763.3445009>
- [78] M. C. Schraefel, Aaron Tabor, and Josh Andres. 2020. Inbodied interaction 102: Understanding the selection and application of non-invasive neuro-physio measurements for inbodied interaction design. *Conference on Human Factors in Computing Systems - Proceedings* (4 2020). <https://doi.org/10.1145/3334480.3375055>
- [79] Zev Schuman-Olivier, Marcelo Trombka, David A. Lovas, Judson A. Brewer, David R. Vago, Richa Gawande, Julie P. Dunne, Sara W. Lazar, Eric B. Loucks, and Carl Fulwiler. 2020. Mindfulness and Behavior Change. *Harvard Review of Psychiatry* 28, 6 (11 2020), 371. <https://doi.org/10.1097/HRP.0000000000000277>
- [80] Anna Schwan. 2021. Perceptions of Student Motivation and Amotivation. *The Clearing House: A Journal of Educational Strategies, Issues and Ideas* 94, 2 (3 2021), 76–82. <https://doi.org/10.1080/00098655.2020.1867490>
- [81] Ladan Shams and Aaron R. Seitz. 2008. Benefits of multisensory learning. *Trends in cognitive sciences* 12, 11 (11 2008), 411–417. <https://doi.org/10.1016/J.TICS.2008.07.006>
- [82] Heikki Sjöman, Nazare Soares, Martinus Suijkerbuijk, Jørgen Blindheim, Martin Steiner, and Dag T. Wisland. 2018. The breathing room - breathing interval and heart rate capturing through ultra low power radar. *Conference on Human Factors in Computing Systems - Proceedings* 2018-April (4 2018). <https://doi.org/10.1145/3170427.3186473>

- [83] M. Slavikova, N. Sekaninova, Olexova L. Bona, Z. Visnovcova, and I. Tonhajzerova. 2020. Biofeedback – A Promising Non Pharmacological Tool of Stress – Related Disorders. *Acta Medica Martiniana* 20, 1 (4 2020), 1–8. <https://doi.org/10.2478/ACM-2020-0001>
- [84] Jacek Sliwinski, Mary Katsikitis, and Christian Martyn Jones. 2017. A Review of Interactive Technologies as Support Tools for the Cultivation of Mindfulness. *Mindfulness* 8, 5 (10 2017), 1150–1159. <https://doi.org/10.1007/S12671-017-0698-X/TABLES/2>
- [85] Petr Slovak, Alissa Antle, Nikki Theofanopoulou, Claudia Daudén Roquet, James Gross, and Katherine Isbister. 2023. Designing for Emotion Regulation Interventions: An Agenda for HCI Theory and Research. *ACM Transactions on Computer-Human Interaction* 30, 1 (3 2023), 13. <https://doi.org/10.1145/3569898/ASSET/46E20013-7C11-4631-97C2-B237AD0948DF/ASSETS/GRAPHIC/TOCHI-2022-0080-F10.JPG>
- [86] Petr Slovak, James J Gross, Katherine Isbister, Uc Santa Cruz, Alissa N Antle, Nikki Theofanopoulou, and Claudia Daudén Roquet. 2022. Designing for emotion regulation interventions: an agenda for HCI theory and research. *ACM Transactions on Computer-Human Interaction* (3 2022). <https://doi.org/10.48550/arxiv.2204.00118>
- [87] Catharina V. Smedegaard. 2022. Novelty Knows No Boundaries: Why a Proper Investigation of Novelty Effects Within SHRI Should Begin by Addressing the Scientific Plurality of the Field. *Frontiers in Robotics and AI* 9 (5 2022), 741478. <https://doi.org/10.3389/FROBT.2022.741478/XML>
- [88] Katharine A. Smith, Thomas Ward, Sinéad Lambé, Edoardo G. Ostinelli, Charlotte Blease, Thomas Gant, Stefan M. Gold, Emily A. Holmes, Ivana Paccoud, Anastasia Vinnikova, Jochen Klucken, Peter J. Uhlhaas, Carolina Garcia Sanchez, Kate Haining, Kerem Böge, Sofia Lahutina, Luisa Tomelleri, Sean Ryan, John Torous, and Andrea Cipriani. 2025. Engagement and attrition in digital mental health: current challenges and potential solutions. *npj Digital Medicine* 2025 8:1 8, 1 (7 2025), 1–9. <https://doi.org/10.1038/s41746-025-01778-w>
- [89] Isabella Sprawson, Jeffrey Wood, and Michail Mantzios. 2020. “And Now Close Your Eyes or Lower Your Gaze”: Exploring Novice Meditators and Their Attentional Processes During Meditation. *Journal of Cognitive Enhancement* 4, 4 (12 2020), 369–378. <https://doi.org/10.1007/S41465-020-00175-3/TABLES/2>
- [90] Xiaotian Sun and Kiyoshi Tomimatsu. 2017. Breath is to be perceived - breathing signal sharing involved in remote emotional communication. In *Lecture Notes in Computer Science (including subseries Lecture Notes in Artificial Intelligence and Lecture Notes in Bioinformatics)*, Vol. 10291 LNCS. Springer, Cham, 472–481. https://doi.org/10.1007/978-3-319-58697-7_35
- [91] Zhida Sun, Manuele Reani, Quan Li, and Xiaojuan Ma. 2020. Fostering engagement in technology-mediated stress management: A comparative study of biofeedback designs. *International Journal of Human-Computer Studies* 140 (8 2020), 102430. <https://doi.org/10.1016/J.IJHCS.2020.102430>
- [92] Wei Tang and David Kreindler. 2017. Supporting homework compliance in cognitive behavioural therapy: Essential features of mobile apps. *JMIR Mental Health* 4, 2 (4 2017). <https://doi.org/10.2196/mental.5283>
- [93] Ruth Tennant, Louise Hiller, Ruth Fishwick, Stephen Platt, Stephen Joseph, Scott Welch, Jane Parkinson, Jenny Secker, and Sarah Stewart-Brown. 2007. The Warwick-Dinburgh mental well-being scale (WEMWBS): Development and UK validation. *Health and Quality of Life Outcomes* 5, 1 (11 2007), 63. <https://doi.org/10.1186/1477-7525-5-63>
- [94] Anne Maj van der Velden, Willem Kuyken, Ulla Wattar, Catherine Crane, Karen Johanne Pallesen, Jesper Dahlgaard, Lone Overby Fjorback, and Jacob Piet. 2015. A systematic review of mechanisms of change in mindfulness-based cognitive therapy in the treatment of recurrent major depressive disorder. *Clinical Psychology Review* 37 (4 2015), 26–39. <https://doi.org/10.1016/J.CPR.2015.02.001>
- [95] Marieke Van Rooij, Adam Lobel, Owen Harris, Niki Smit, and Isabela Granic. 2016. DEEP: A biofeedback virtual reality game for children at-risk for anxiety. *Conference on Human Factors in Computing Systems - Proceedings* 07-12-May-2016 (5 2016), 1989–1997. <https://doi.org/10.1145/2851581.2892452>
- [96] Sascha Vermeylen, Elisabeth Honinx, Stefanie Broes, Hilde Vandenhoudt, and Nele A.J. De Witte. 2022. Evaluation of a tactile breath pacer for sleep problems: A mixed method pilot study. *Frontiers in Digital Health* 4 (10 2022), 908159. <https://doi.org/10.3389/FDGH.2022.908159/BIBTEX>
- [97] Warwick Medical School. 2020. Collect, score, analyse and interpret WEMWBS. <https://warwick.ac.uk/fac/sci/med/research/platform/wemwbs/using/howto/>
- [98] Michele A. Williams, Asta Roseway, Chris O’Dowd, Mary Czerwinski, and Meredith Ringel Morris. 2015. SWARM: An actuated wearable for mediating affect. In *TEI 2015 - Proceedings of the 9th International Conference on Tangible, Embedded, and Embodied Interaction*. Association for Computing Machinery, Inc, 293–300. <https://doi.org/10.1145/2677199.2680565>
- [99] Bin Yu, Mathias Funk, Jun Hu, Qi Wang, and Loe Feijs. 2018. Biofeedback for Everyday Stress Management: A Systematic Review. *Frontiers in ICT* 5, SEP (9 2018), 23. <https://doi.org/10.3389/fict.2018.00023>
- [100] Bin Yu, Jun Hu, Mathias Funk, and Loe Feijs. 2018. DeLight: biofeedback through ambient light for stress intervention and relaxation assistance. *Personal and Ubiquitous Computing* 22, 4 (8 2018), 787–805. <https://doi.org/10.1007/s00779-018-1141-6>
- [101] Andrea Zaccaro, Andrea Piarulli, Marco Laurino, Erika Garbella, Danilo Menicucci, Bruno Neri, and Angelo Gemignani. 2018. How Breath-Control Can Change Your Life: A Systematic Review on Psycho-Physiological Correlates of Slow Breathing. , 353 pages. <https://doi.org/10.3389/fnhum.2018.00353>
- [102] Giorgia Zamariola, Nollaig Frost, Alice Van Oost, Olivier Corneille, and Olivier Luminet. 2019. Relationship between interoception and emotion regulation: New evidence from mixed methods. *Journal of Affective Disorders* 246 (3 2019), 480–485. <https://doi.org/10.1016/J.JAD.2018.12.101>
- [103] Dexing Zhang, Eric K.P. Lee, Eva C.W. Mak, C. Y. Ho, and Samuel Y.S. Wong. 2021. Mindfulness-based interventions: an overall review. *British Medical Bulletin* 138, 1 (6 2021), 41–57. <https://doi.org/10.1093/BMB/LDAB005>
- [104] Yiran Zhao, Yujie Tao, Cornell Tech, Usa Rui Maki, Usa Alexander Adams, Pedro Lopes, Grace Le, Rui Maki, Alexander Adams, and Tanzeem Choudhury. 2022. Affective Touch as Immediate and Passive Wearable Intervention. *Proc. ACM Interact. Mob. Wearable Ubiquitous Technol* 6, 4 (2022), 23. <https://doi.org/10.1145/3569484>
- [105] Nianmei Zhou, Steven Devleminck, and Lucca Geurts. 2025. Squeeze Away the Worries: Exploring the Potential of Squeezable Interactions for Emotion Regulation for Desk Workers. *Conference on Human Factors in Computing Systems - Proceedings* (4 2025). [https://doi.org/10.1145/3706598.3713483/SUPPL\[_\]FILE/PN9816-TALK-VIDEO-CAPTION.VTT](https://doi.org/10.1145/3706598.3713483/SUPPL[_]FILE/PN9816-TALK-VIDEO-CAPTION.VTT)
- [106] Bin Zhu, Anders Hedman, Shuo Feng, Haibo Li, and Walter Osika. 2017. Designing, Prototyping and Evaluating Digital Mindfulness Applications: A Case Study of Mindful Breathing for Stress Reduction. *Journal of medical Internet research* 19, 6 (2017). <https://doi.org/10.2196/JMIR.6955>

A Appendix

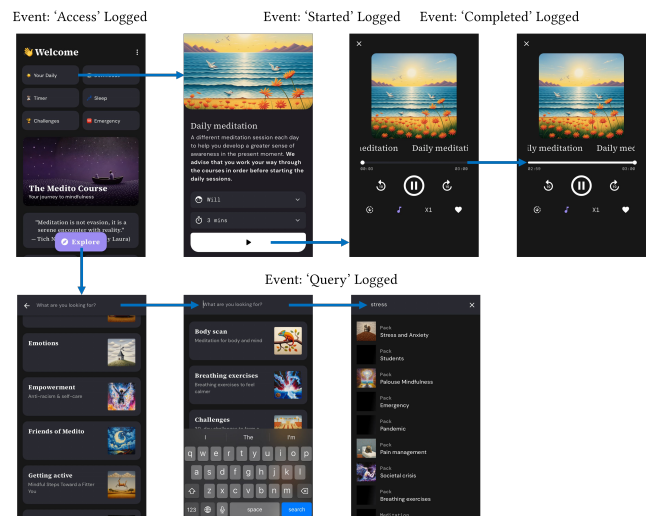


Figure 8: The DMHI Medito and its logged instances of digital metrics

| | Baseline (T1) | | 6-week End-of-intervention (T6) | | d (95% CI) | General Linear Model with Baseline Scores as Covariate | | | | | | |
|-----------------------------------------------------------|-------------------------------|------------------------------------|---------------------------------|------------------------|------------------------|--------------------------------------------------------|-----------------------|--------------|----------|-----------|--------------|------------|
| | Exp Group A: M (SD)(SE) | | Ctrl Group B: M (SD)(SE) | | | Group | | | Baseline | | | |
| | F(1,66) | Pr(>F) | η^2_p | F(1,66) | | Pr(>F) | η^2_p | | | | | |
| MAIA-2 | Attention Regulation | 2.319 (0.617) (0.106) | 2.111 (0.849) (0.143) | 2.992 (0.750) (0.129) | 2.531 (0.808) (0.137) | 0.591 [0.107, 1.071] | 7.580 | 0.00761 ** | 0.064 | 18.280 | 6.28e-05 *** | 0.217 |
| | Body Listening | 2.098 (0.967) (0.166) | 2.001 (0.973) (0.164) | 3.001 (0.861) (0.148) | 2.429 (0.952) (0.161) | 0.630 [0.144, 1.111] | 8.417 | 0.005047 ** | 0.099 | 16.429 | 0.000136 *** | 0.199 |
| | Emotional Awareness | 3.159 (0.791) (0.136) | 2.983 (0.803) (0.136) | 3.865 (0.713) (0.122) | 3.326 (0.785) (0.133) | 0.718 [0.228, 1.203] | 10.440 | 0.001922 ** | 0.107 | 12.670 | 0.000695 *** | 0.161 |
| | Not-Distracting | 1.785 (0.873) (0.150) | 1.681 (1.026) (0.173) | 1.946 (0.792) (0.136) | 1.658 (0.816) (0.138) | 0.359 [-0.117, 0.834] | 7.580 | 0.00761 ** | 0.034 | 18.280 | 6.28e-05 *** | 0.383 |
| | Not-Worrying | 1.853 (0.774) (0.133) | 1.754 (0.612) (0.103) | 2.306 (0.780) (0.134) | 2.006 (0.985) (0.167) | 0.337 [-0.139, 0.811] | 2.374 | 0.128 | 0.023 | 15.122 | 0.000237 *** | 0.186 |
| | Noticing | 2.838 (0.723) (0.124) | 2.757 (0.835) (0.141) | 3.544 (0.608) (0.104) | 3.314 (0.773) (0.131) | 0.330 [-0.146, 0.804] | 1.876 | 0.175 | 0.013 | 8.873 | 0.354 | 0.026 |
| | Self-Regulation | 2.257 (0.714) (0.122) | 2.014 (0.809) (0.137) | 3.243 (0.836) (0.143) | 2.721 (0.837) (0.142) | 0.623 [0.137, 1.104] | 7.930 | 0.006405 ** | 0.068 | 13.390 | 0.000504 *** | 0.169 |
| | Trust | 2.666 (0.848) (0.145) | 2.533 (0.879) (0.149) | 3.226 (0.823) (0.141) | 3.095 (0.959) (0.162) | 0.146 [-0.327, 0.618] | 0.458 | 0.501 | 0.002 | 17.664 | 8.09e-05 *** | 0.211 |
| | EMC | Detachment from Automatic Thinking | 1.724 (0.561) (0.096) | 1.926 (0.511) (0.086) | 2.212 (0.528) (0.091) | 2.394 (0.735) (0.124) | 0.285 [-0.190, 0.759] | 1.583 | 0.213 | 0.006 | 9.927 | 0.00245 ** |
| Attention and Awareness of Feelings and Bodily Sensations | | 3.453 (0.529) (0.091) | 3.343 (0.607) (0.103) | 3.535 (0.534) (0.092) | 3.474 (0.742) (0.125) | 0.094 [-0.378, 0.566] | 0.181 | 0.672 | 0.000 | 13.339 | 0.000515 *** | 0.168 |
| Disconnection from the Body | | 2.747 (0.947) (0.162) | 2.811 (0.959) (0.162) | 2.100 (0.963) (0.165) | 2.640 (1.001) (0.169) | 0.550 [0.069, 1.031] | 7.047 | 0.00994 ** | 0.085 | 24.578 | 5.26e-06 *** | 0.271 |
| Awareness of the Mind-Body Connection | | 3.816 (0.604) (0.104) | 3.657 (0.673) (0.114) | 4.316 (0.538) (0.092) | 3.779 (0.571) (0.097) | 0.969 [0.470, 1.468] | 22.380 | 1.22e-05 *** | 0.199 | 26.640 | 2.44e-06 *** | 0.288 |
| Acceptance of Feelings and Bodily Sensations | | 2.441 (0.616) (0.106) | 2.280 (0.691) (0.117) | 2.759 (0.705) (0.121) | 2.371 (0.737) (0.125) | 0.537 [0.057, 1.017] | 7.207 | 0.00917 ** | 0.056 | 31.113 | 4.9e-07 *** | 0.320 |
| DASS | WEMWBS | 38.353 (4.498) (0.771) | 37.686 (7.020) (1.187) | 48.824 (7.321) (1.256) | 45.000 (8.619) (1.457) | 0.478 [-0.001, 0.956] | 4.086 | 0.0473 * | 0.052 | 3.606 | 0.062 | 0.052 |
| | DASS-D | 16.059 (7.742) (1.328) | 17.086 (9.460) (1.599) | 10.706 (7.578) (1.300) | 11.714 (8.584) (1.451) | 0.124 [-0.348, 0.597] | 0.348 | 0.557 | 0.001 | 21.392 | 1.8e-05 *** | 0.245 |
| | DASS-A | 16.588 (7.024) (1.205) | 14.571 (7.678) (1.298) | 9.235 (6.272) (1.076) | 8.686 (6.077) (1.027) | 0.089 [-0.383, 0.561] | 0.188 | 0.666 | 0.001 | 26.018 | 3.07e-06 *** | 0.283 |
| | DASS-S | 20.794 (6.517) (1.118) | 21.600 (7.968) (1.347) | 13.647 (7.006) (1.202) | 14.971 (7.168) (1.212) | 0.187 [-0.286, 0.660] | 0.785 | 0.379 | 0.006 | 21.335 | 1.84e-05 *** | 0.244 |
| SIMS | Intrinsic Motivation | 4.912 (0.959) (0.164) | 5.107 (0.796) (0.135) | 5.206 (1.054) (0.181) | 5.100 (0.938) (0.159) | 0.106 [-0.366, 0.578] | 0.291 | 0.592 | 0.021 | 34.088 | 1.76e-07 *** | 0.341 |
| | Identific Regulation | 5.154 (0.973) (0.167) | 5.450 (0.838) (0.142) | 5.338 (1.031) (0.177) | 5.257 (0.971) (0.164) | 0.081 [-0.391, 0.553] | 0.208 | 0.650 | 0.041 | 57.369 | 1.53e-10 *** | 0.465 |
| | External Regulation | 2.635 (1.122) (0.192) | 2.471 (1.345) (0.227) | 2.426 (1.033) (0.177) | 2.521 (1.447) (0.245) | 0.075 [-0.397, 0.547] | 0.164 | 0.687 | 0.011 | 46.005 | 3.94e-09 *** | 0.411 |
| | Amotivation | 1.669 (0.639) (0.110) | 1.821 (0.986) (0.167) | 1.368 (0.527) (0.090) | 1.657 (0.922) (0.156) | 0.384 [-0.092, 0.860] | 4.044 | 0.0484 * | 0.029 | 40.423 | 2.21e-08 *** | 0.380 |
| ESS | Autoteleic Experience | 3.632 (0.619) (0.106) | 3.657 (0.616) (0.104) | 4.164 (0.691) (0.119) | 3.921 (0.757) (0.128) | 0.335 [-0.141, 0.810] | 2.108 | 0.151 | 0.033 | 7.118 | 0.00959 ** | 0.097 |
| | Unambiguous Feedback | 3.044 (0.670) (0.115) | 3.138 (0.689) (0.116) | 3.691 (0.866) (0.149) | 3.607 (0.689) (0.117) | 0.108 [-0.365, 0.580] | 0.207 | 0.651 | 0.005 | 3.413 | 0.069 | 0.049 |
| | Concentration on Task at Hand | 2.551 (0.859) (0.147) | 2.643 (1.013) (0.171) | 3.228 (1.081) (0.185) | 3.021 (1.012) (0.171) | 0.197 [-0.276, 0.670] | 0.993 | 0.323 | 0.024 | 32.986 | 2.56e-07 *** | 0.333 |
| | Loss of Self-consciousness | 3.206 (1.060) (0.182) | 3.379 (0.850) (0.144) | 4.044 (0.854) (0.146) | 3.886 (0.924) (0.156) | 0.178 [-0.295, 0.651] | 0.739 | 0.393 | 0.025 | 24.661 | 5.1e-06 *** | 0.272 |
| Transformation of Time | 3.235 (0.879) (0.151) | 3.643 (0.832) (0.141) | 3.713 (0.932) (0.160) | 3.764 (0.959) (0.162) | 0.054 [-0.418, 0.526] | 0.057 | 0.812 | 0.004 | 9.644 | 0.0028 ** | 0.127 | |

Figure 9: Summary of Baseline and End-of-intervention Comparisons and GLM analyses. Baseline (T1) and week six (T6) scores for the experimental (Exp) group A and control (Ctrl) group B are presented as Mean (Standard Deviation) [SD] (Standard Error) [SE]. The effect sizes are reported as Cohen’s d with 95% confidence intervals [CI]. The GLM with Baseline scores as covariate provides F statistics, associated p-values (Pr(>F)), and partial eta squared (η^2_p) for ‘Group’ and ‘Baseline’ effects. ‘Group’ indicates the significance of the intervention between groups at T6, while ‘Baseline’ reflects the variance explained by baseline measures within the model. Asterisks denote levels of significance (* $p < .05$, ** $p < .01$, *** $p < .001$), and partial η^2_p values quantify the effect size for each factor, reflecting the proportion of variance accounted for by the respective variable in the model.

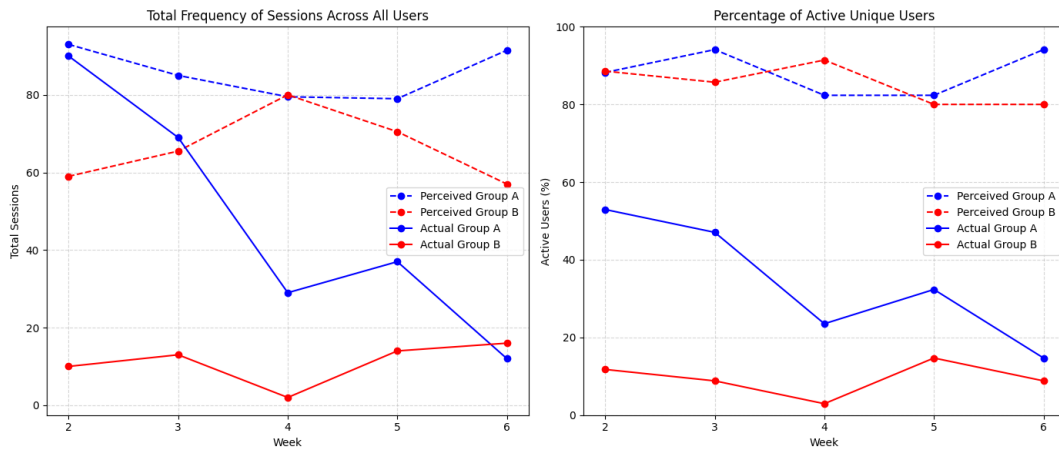


Figure 10: Comparison of total sessions started and percentage of active users based on self-reported and actual app usage over weeks 2–6. Perceived metrics were derived from survey responses by converting categorical practice frequencies into estimated session counts (0 for “Did not practice”, 1 for “Practised once”, 2.5 for “Practised 2–3 times”, 5 for “Practised 4–6 times”, and 7 for “Practised daily”) and by computing the percentage of respondents reporting any practice. Actual metrics were computed from app event logs, where total sessions represent the count of sessions started, and active user percentages are based on the weekly count of unique users. Dashed lines indicate perceived measures, while solid lines denote actual measures; blue and red represent groups A and B, respectively.