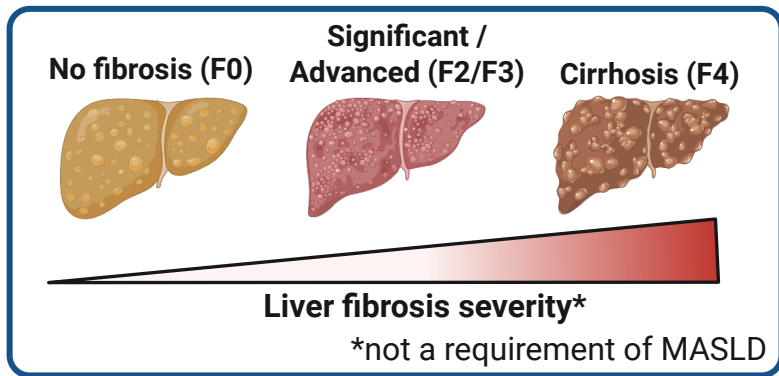
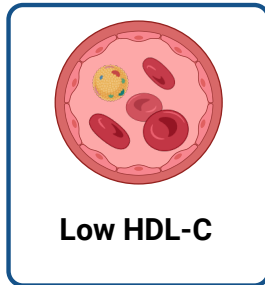
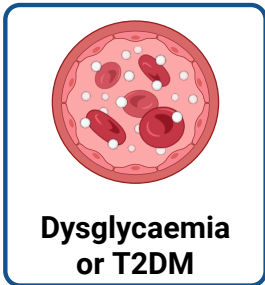


Metabolic dysfunction-associated steatotic liver disease (MASLD)



Plus any one cardiometabolic trait



In the absence of secondary causes including:

Excessive alcohol consumption (>20/30 g per day in women and men respectively)

Toxin or drug-induced

Viral or genetically induced (e.g. inborn errors of metabolism and LAL-D)